

Narraquinnep State 1 (BEFORE P&A)



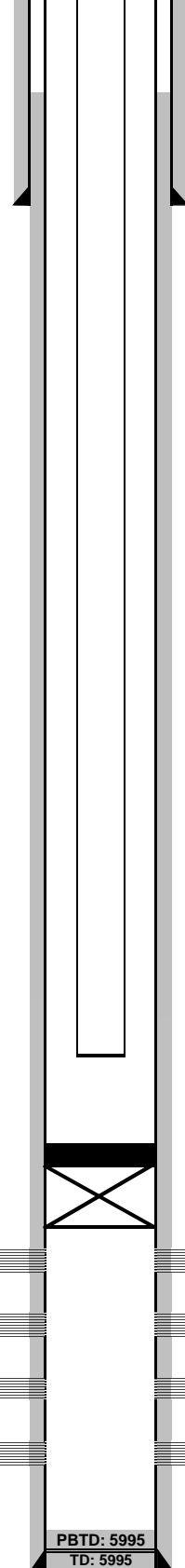
DESCRIPTION DEPTH WELLBORE WELL HISTORY

4-1/2" Production TOC :
(CBL) 890'

9-5/8" Surface Casing:
(cement to surface) 2,566'

2-3/8" Production Tubing: UNK

4-1/2" Production Casing: 5995'



Existing CIBP at 5,780' with 2 sx on Top
9/1/2009

Zone	Perforation Data	
	Top (ft)	Bottom (ft)
Gothic	5805	5896

WELL: Narraquinnep State 1
LOCATION: SENE 36 40N 16W
 FNL: 2,011' FEL: 606'
FORMATION: Gothic
API #: 05-033-06131
Field: Wildcat
CLASSIFICATION:
CURRENT STATUS: PR
Spud: 07/11/07

TUBULAR DATA

Type	Size	Weight	Grade	Top	Bottom	Burst	Collapse
Surface	9 5/8"	36.0 ppf	-	0	2,566'		
Production	5 1/2"	17 ppf	-	0	5995'		
Tubing	2 3/8"	4.6 ppf	-	0	UNK		

