

# MULTI-WELL PAD DIRECTIONAL LAYOUT

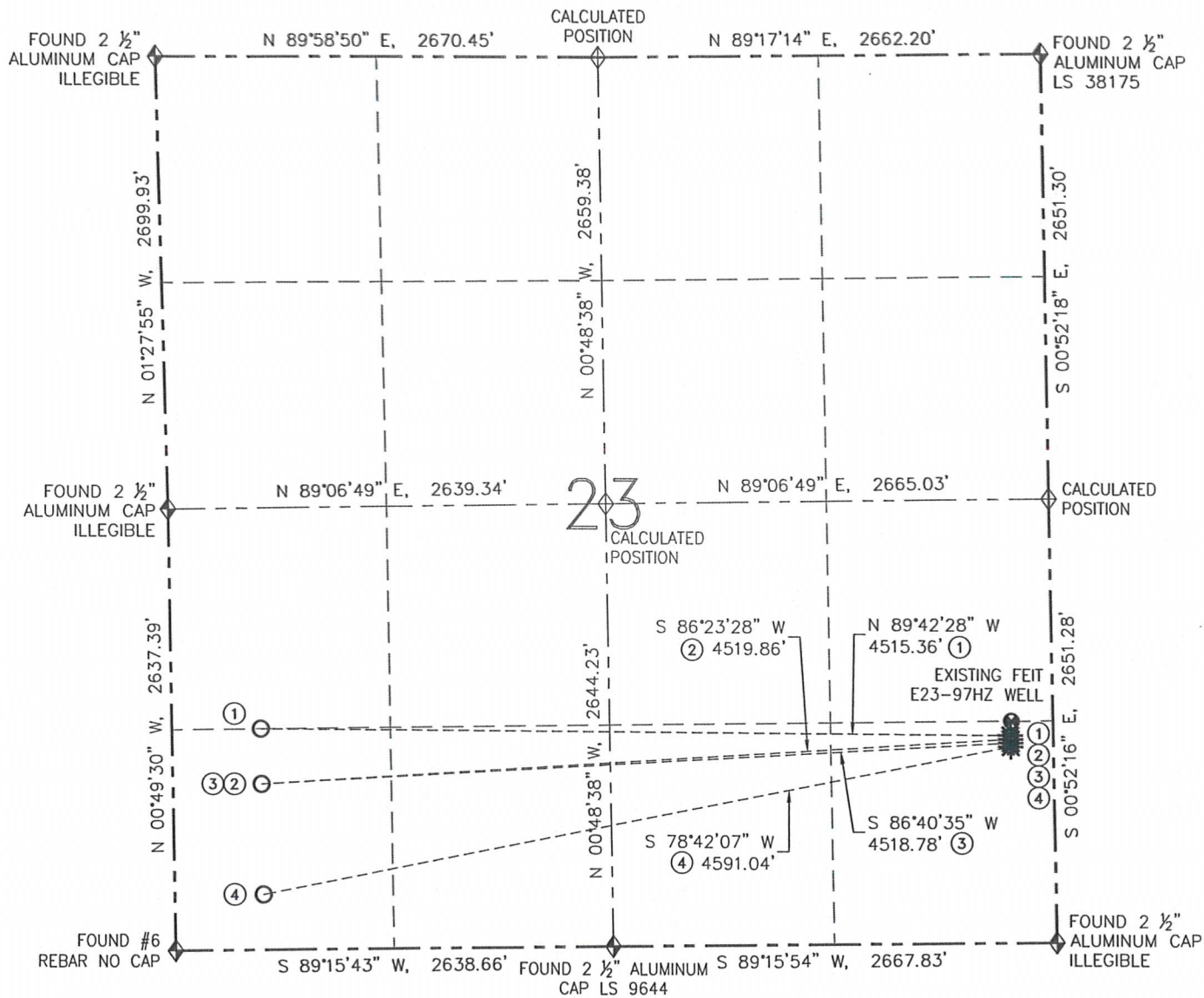
## RELIANCE E23-63HC PAD

THIS MAP DOES NOT REPRESENT A BOUNDARY SURVEY

SECTION: 23

TOWNSHIP: 6 NORTH

RANGE: 65 WEST



0 1000'

SCALE: 1" = 1000'

NOTE: BEARINGS ARE GRID BEARINGS OF THE COLORADO STATE PLANE COORDINATE SYSTEM, NORTH ZONE, NAD 83. THE LINEAL DIMENSIONS SHOWN HEREON ARE BASED UPON THE "U.S. SURVEY FOOT".

### LEGEND

- PROPOSED WELL
- EXISTING WELL
- BOTTOM HOLE
- FOUND MONUMENT
- CALCULATED POSITION



FIELD DATE: 01/03/13  
 PLOT DATE: 04/24/13  
 DRAWN BY: CJD  
 JOB NO.: NE12383  
 SHEET NO.: 8 of 11

NO.	WELL NAME	FOOTAGES		LATITUDE	LONGITUDE
1	RELIANCE E23-63HC	BHL: 1320' FSL	BHL: 535' FWL	BHL: N 40.46780°	BHL: W 104.63797°
2	RELIANCE E23-63-1HNC	BHL: 990' FSL	BHL: 535' FWL	BHL: N 40.46689°	BHL: W 104.63797°
3	RELIANCE E23-63-1HNA	BHL: 990' FSL	BHL: 535' FWL	BHL: N 40.46689°	BHL: W 104.63797°
4	RELIANCE E23-62-1HN	BHL: 330' FSL	BHL: 535' FWL	BHL: N 40.46508°	BHL: W 104.63795°

## MULTI-WELL PAD LOCATION DRAWING

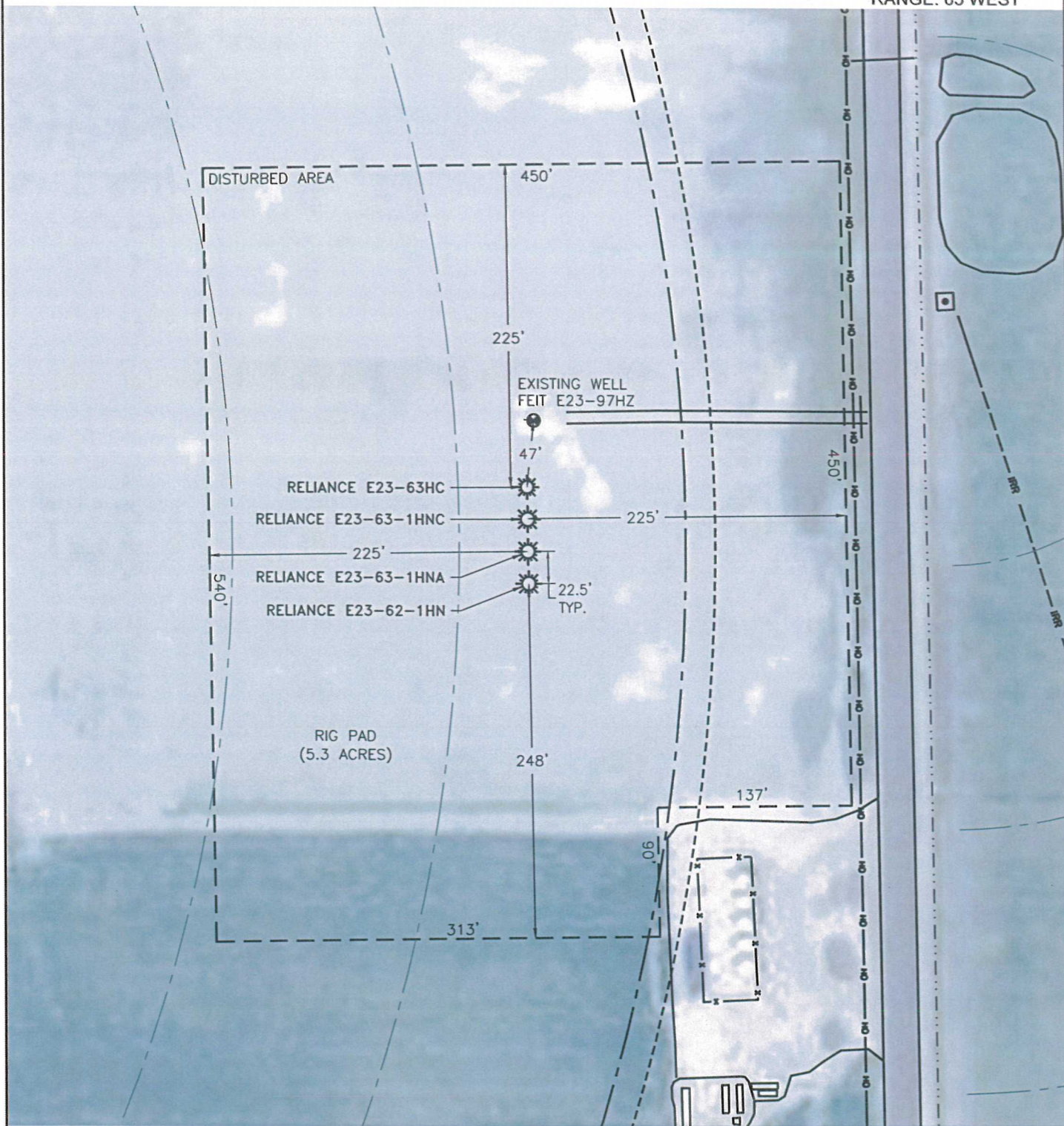
RELIANCE E23-63HC PAD

THIS MAP DOES NOT REPRESENT A BOUNDARY SURVEY

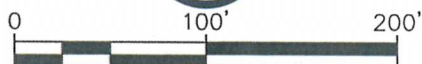
SECTION: 23

TOWNSHIP: 6 NORTH

RANGE: 65 WEST



FIELD DATE: 01/03/13  
PLOT DATE: 04/24/13  
DRAWN BY: CJD  
JOB NO.: NE12383  
SHEET NO.: 9 of 11



SCALE: 1" = 100'

### LEGEND

- PROPOSED WELL
- EXISTING WELL