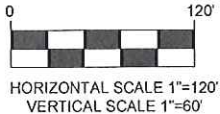
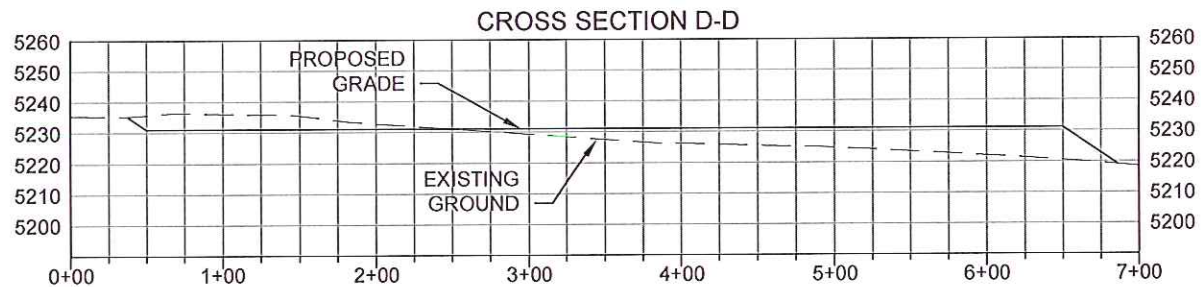
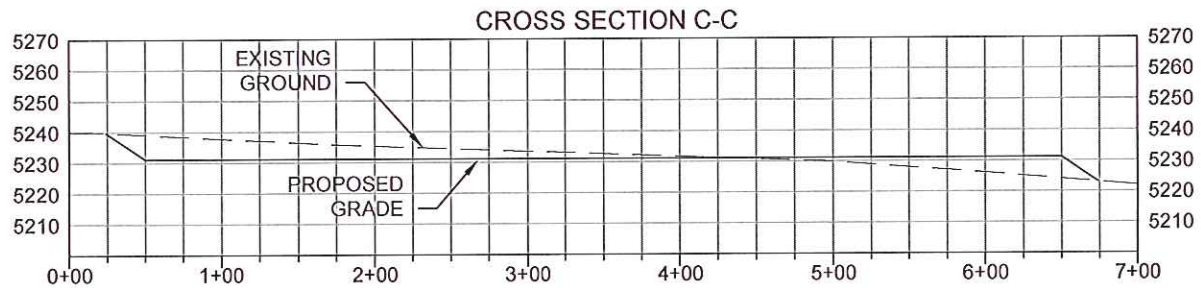
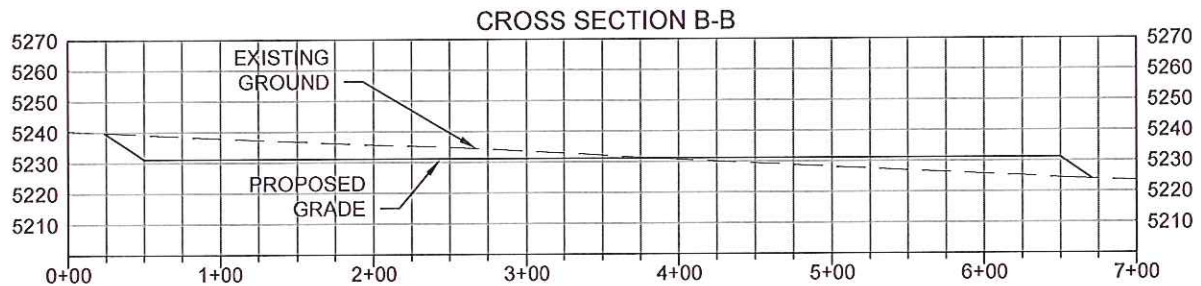
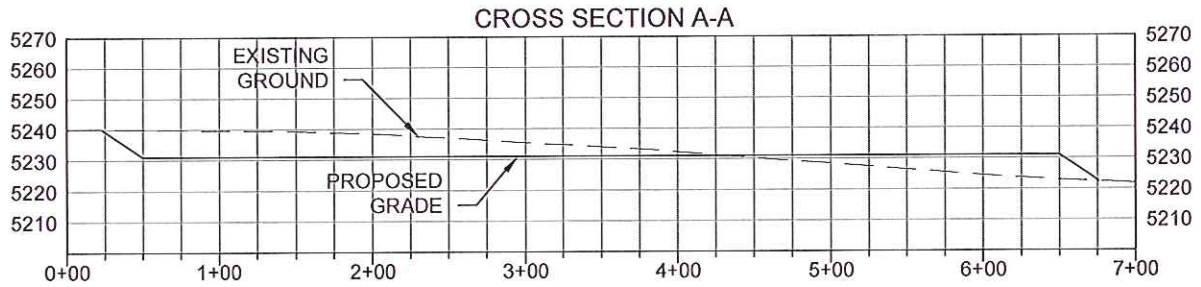


FINISHED GRADE ELEVATION = 5231.10'
CUT SLOPES = 3:1
FILL SLOPES = 3:1
TOTAL CUT FOR PAD = 30,593 CY
TOTAL FILL FOR PAD (+8% SHRINKAGE) = 30,593 CY
NET EXCESS MATERIAL = 0 CY
TOPSOIL FROM GRADED AREA = 7,600 CY
TOTAL DISTURBANCE AREA = 10.74 ACRES

GREAT WESTERN
OIL & GAS
COMPANY

WILLOW BEND LD 18-36HN-2
GREAT WESTERN OIL & GAS COMPANY
CROSS SECTIONS



NOTE:

1. A COMPLETE UTILITIES LOCATION IS RECOMMENDED BEFORE CONSTRUCTION.

PREPARED BY:



FIELD DATE:
05-01-13

DRAWING DATE:
05-16-13

BY:
KAD

CHECKED BY:
MLP

PAD NAME:

WILLOW BEND LD 18-36HN-2

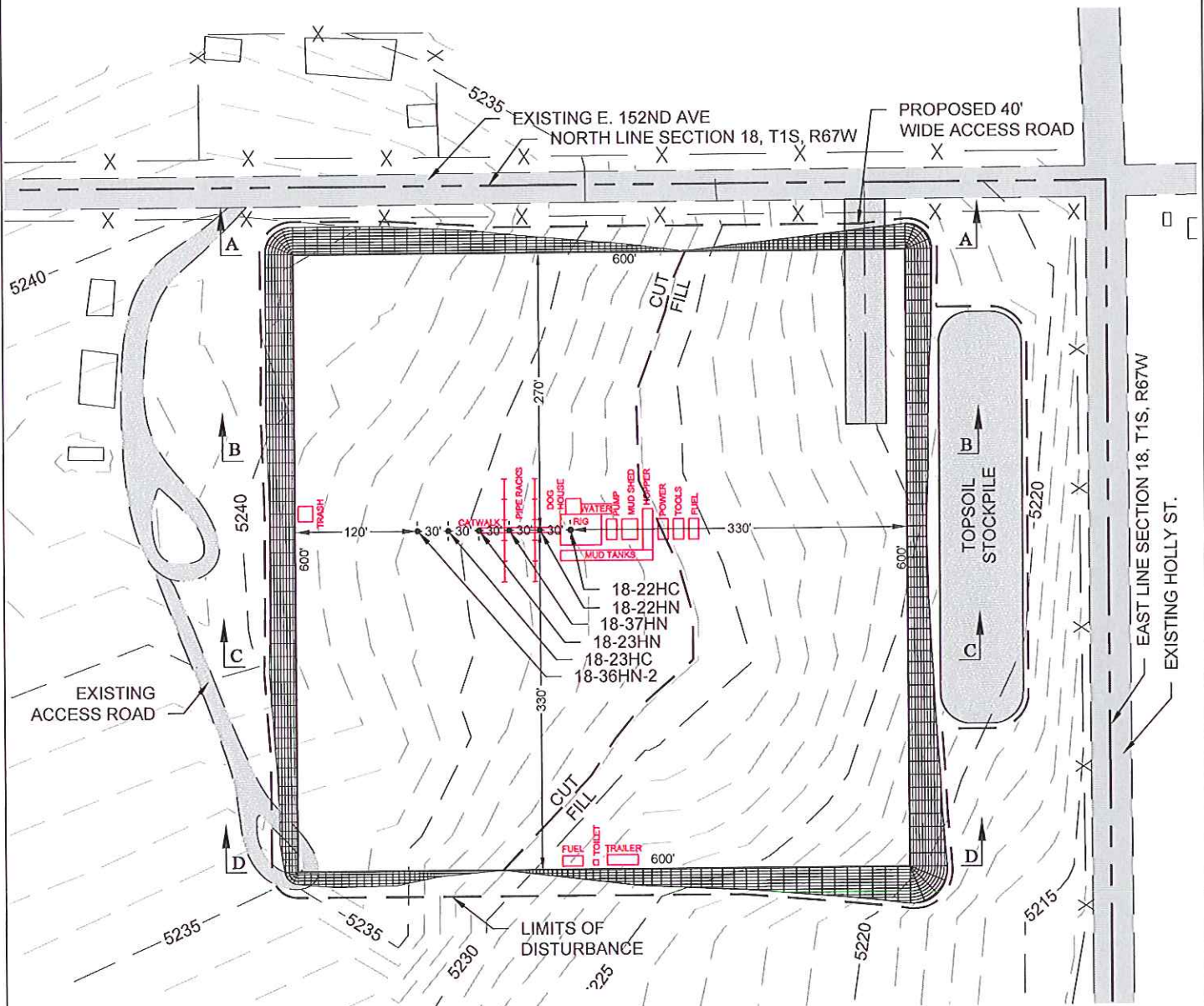
SURFACE LOCATION:

NE 1/4, NE 1/4, SEC. 18, T1S, R67W, 6TH P.M.
ADAMS COUNTY, COLORADO

PREPARED FOR:

GREAT WESTERN
OIL & GAS
COMPANY

WILLOW BEND LD 18-36HN-2
GREAT WESTERN OIL & GAS COMPANY
RIG LAYOUT



NOTE:

1. A COMPLETE UTILITIES LOCATION IS RECOMMENDED BEFORE CONSTRUCTION.
2. STOCKPILES ARE ASSUMED TO BE 10' IN HEIGHT WITH 3:1 SIDE SLOPES.

PREPARED BY:



FIELD DATE:

05-01-13

DRAWING DATE:

05-16-13

BY:

KAD

CHECKED BY:

MLP

PAO NAME:

WILLOW BEND LD 18-36HN-2

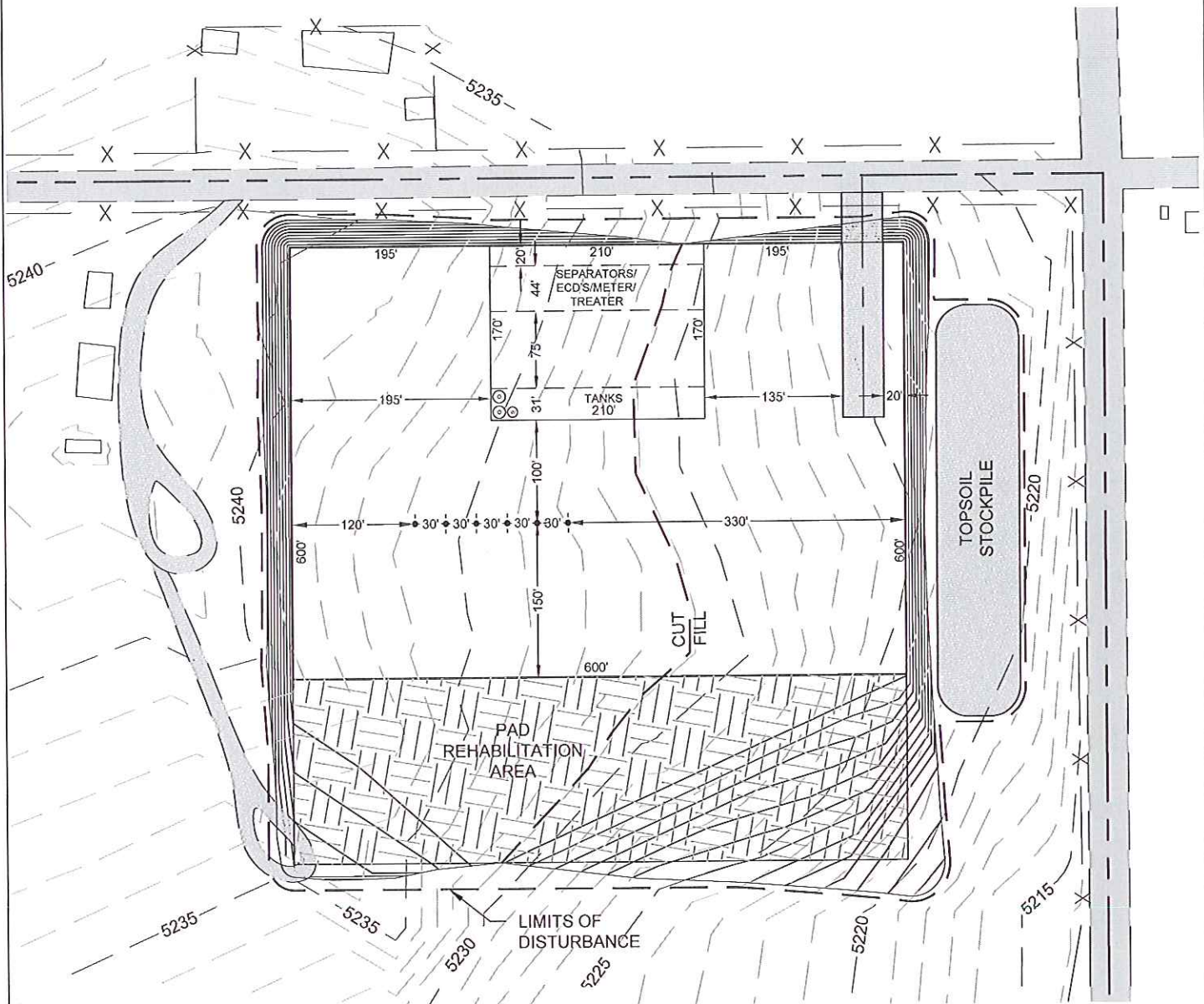
SURFACE LOCATION:

NE 1/4, NE 1/4, SEC. 18, T1S, R67W, 6TH P.M.
ADAMS COUNTY, COLORADO

PREPARED FOR:

GREAT WESTERN
OIL & GAS
COMPANY

WILLOW BEND LD 18-36HN-2
GREAT WESTERN OIL & GAS COMPANY
PRODUCTION LAYOUT



NOTE:

1. A COMPLETE UTILITIES LOCATION IS RECOMMENDED BEFORE CONSTRUCTION.
2. STOCKPILES ARE ASSUMED TO BE 10' IN HEIGHT WITH 3:1 SIDE SLOPES.

PREPARED BY:



FIELD DATE:

05-01-13

DRAWING DATE:

05-16-13

BY:

KAD

CHECKED BY:

MLP

PAD NAME:

WILLOW BEND LD 18-36HN-2

SURFACE LOCATION:

NE 1/4, NE 1/4, SEC. 18, T1S, R67W, 6TH P.M.
ADAMS COUNTY, COLORADO

PREPARED FOR:

GREAT WESTERN
OIL & GAS
COMPANY