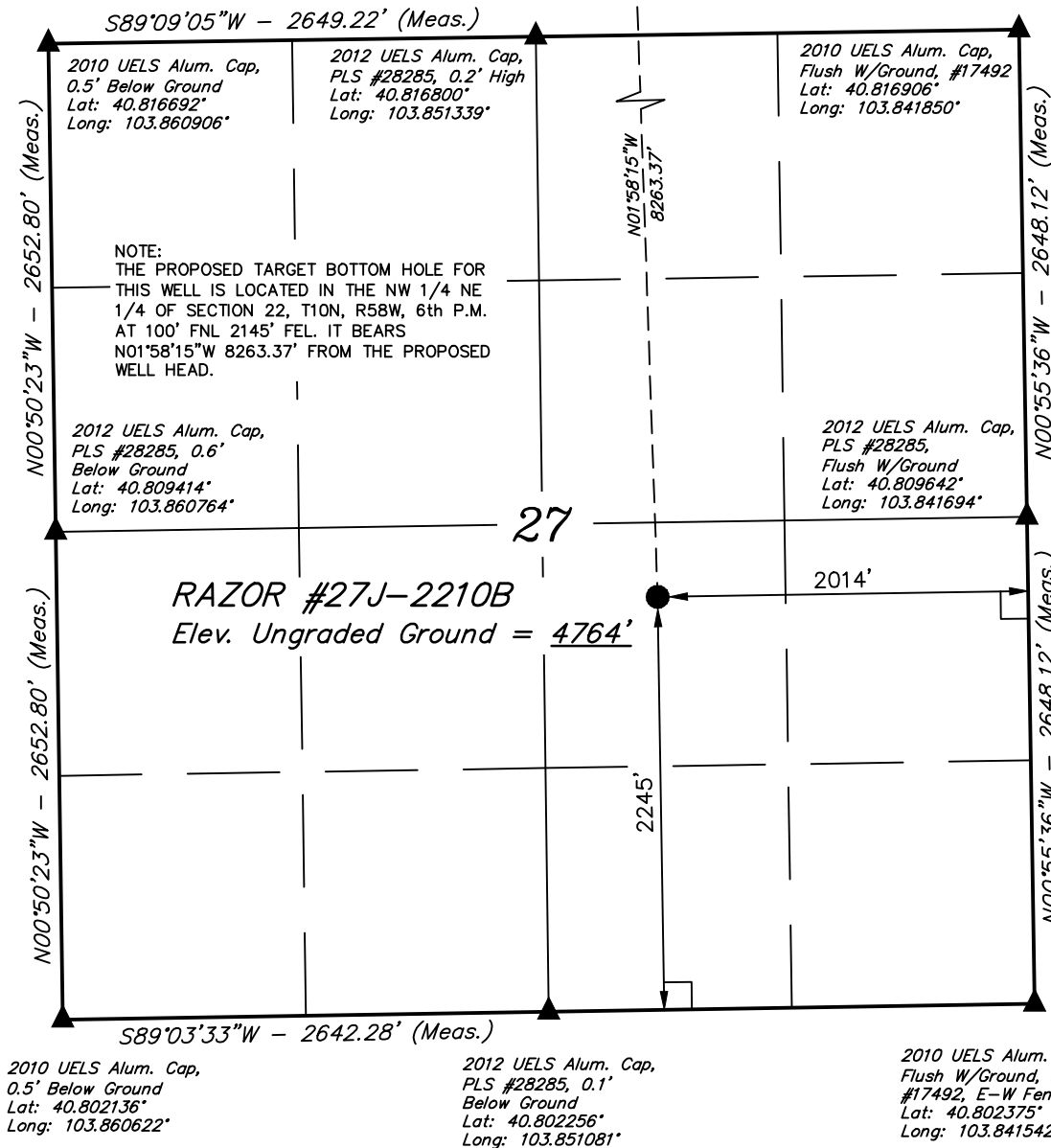


# T10N, R58W, 6th P.M.

## Target Bottom Hole



### LEGEND:

- └─┘ = 90° SYMBOL
- = PROPOSED WELL HEAD.
- ▲ = SECTION CORNERS LOCATED.

PDOP = 1.5

NAD 83 (SURFACE LOCATION)
LATITUDE = 40°48'30.40" (40.808444)
LONGITUDE = 103°50'56.20" (103.848944)
NAD 27 (SURFACE LOCATION)
LATITUDE = 40°48'30.45" (40.808458)
LONGITUDE = 103°50'54.40" (103.848444)

## WHITING OIL & GAS CORP.

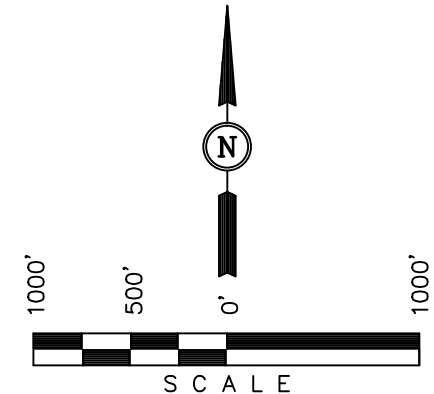
Well location, RAZOR #27J-2210B (SURFACE LOCATION), located as shown in the NW 1/4 SE 1/4 of Section 27, T10N, R58W, 6th P.M., Weld County, Colorado.

### BASIS OF ELEVATION

SPOT ELEVATION LOCATED AT THE NORTHEAST CORNER OF SECTION 15, T9N, R58W, 6th P.M. TAKEN FROM THE GATEHOOK SPRING, QUADRANGLE, COLORADO, WELD COUNTY, 7.5 MINUTE QUAD (TOPOGRAPHIC MAP) PUBLISHED BY THE UNITED STATES DEPARTMENT OF THE INTERIOR, GEOLOGICAL SURVEY. SAID ELEVATION IS MARKED AS BEING 4679 FEET.

### BASIS OF BEARINGS

BASIS OF BEARINGS IS A G.P.S. OBSERVATION.



### CERTIFICATE

THIS IS TO CERTIFY THAT THE ABOVE PLAT WAS PREPARED FROM FIELD NOTES OF ACTUAL SURVEYS MADE BY ME OR UNDER MY SUPERVISION AND THAT THE SAME ARE TRUE AND CORRECT TO THE BEST OF MY KNOWLEDGE AND BELIEF.

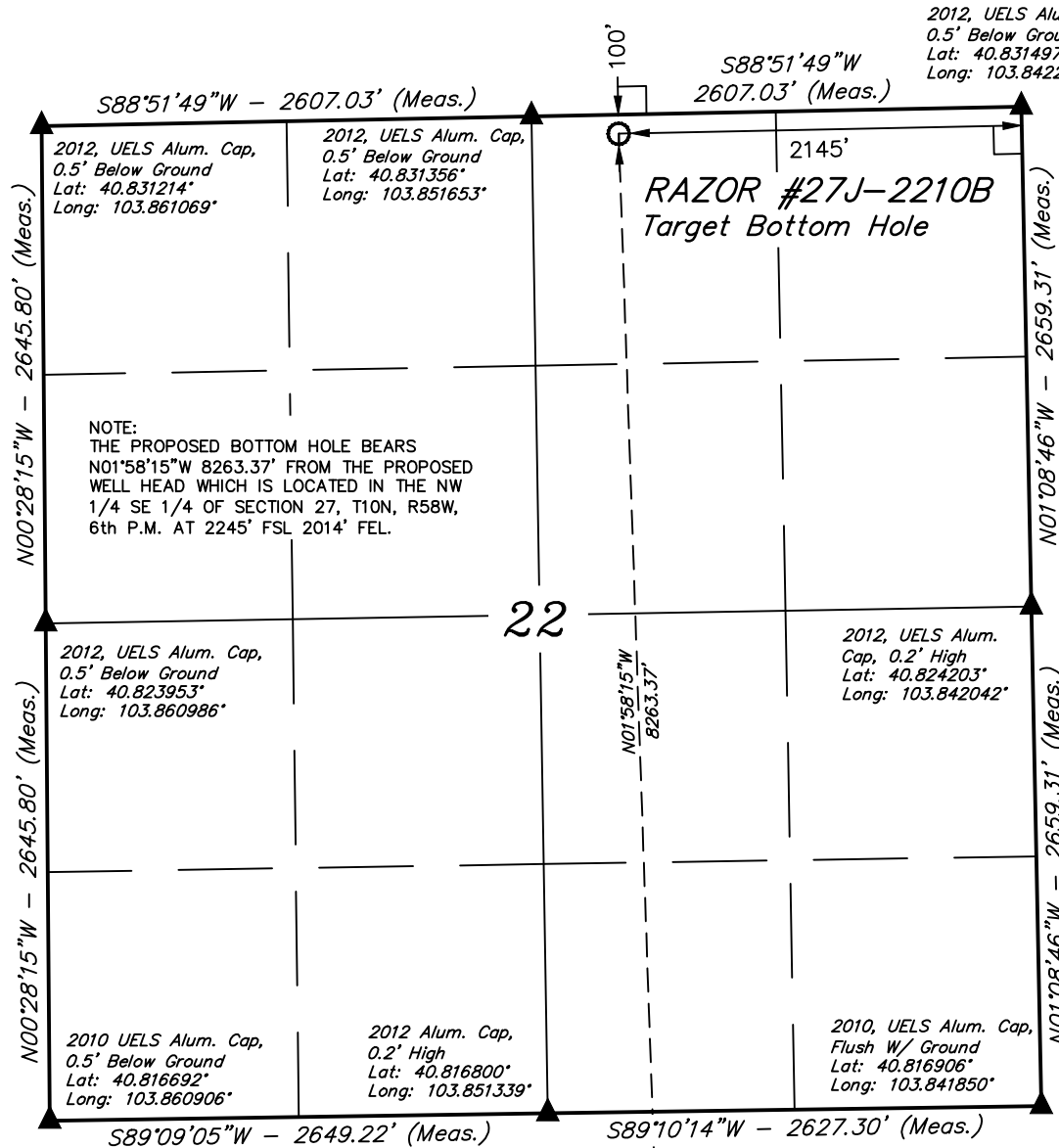
REGISTERED LAND SURVEYOR  
REGISTRATION NO. 17492  
STATE OF COLORADO

REV.: 07-02-13 J.W.

UTAH ENGINEERING & LAND SURVEYING 85 SOUTH 200 EAST - VERNAL, UTAH 84078 (435) 789-1017		
SCALE 1" = 1000'	DATE SURVEYED: 03-15-13	DATE DRAWN: 03-21-13
PARTY J.H. C.M. M.D.	REFERENCES G.L.O. PLAT	
WEATHER COOL	FILE WHITING OIL & GAS CORP.	

T10N, R58W, 6th P.M.

WHITING OIL & GAS CORP.



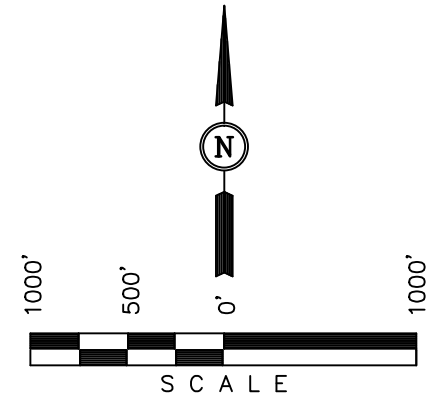
Well location, RAZOR #27J-2210B (TARGET BOTTOM HOLE), located as shown in the NW 1/4 NE 1/4 of Section 22, T10N, R58W, 6th P.M., Weld County, Colorado.

### BASIS OF ELEVATION

SPOT ELEVATION LOCATED AT THE NORTHEAST CORNER OF SECTION 15, T9N, R58W, 6th P.M. TAKEN FROM THE GATEHOOK SPRING, QUADRANGLE, COLORADO, WELD COUNTY, 7.5 MINUTE QUAD (TOPOGRAPHIC MAP) PUBLISHED BY THE UNITED STATES DEPARTMENT OF THE INTERIOR, GEOLOGICAL SURVEY. SAID ELEVATION IS MARKED AS BEING 4679 FEET.

### BASIS OF BEARINGS

BASIS OF BEARINGS IS A G.P.S. OBSERVATION.



### CERTIFICATE

THIS IS TO CERTIFY THAT THE ABOVE PLAT WAS PREPARED FROM FIELD NOTES OF ACTUAL SURVEYS MADE BY ME OR UNDER MY SUPERVISION AND THAT THE SAME ARE TRUE AND CORRECT TO THE BEST OF MY KNOWLEDGE AND BELIEF.

REGISTERED LAND SURVEYOR  
REGISTRATION NO. 17492  
STATE OF COLORADO

### LEGEND:

- └─┘ = 90° SYMBOL
  - = PROPOSED WELL HEAD.
  - ▲ = SECTION CORNERS LOCATED.
- Surface Hole Location ●

<b>NAD 83 (TARGET BOTTOM HOLE)</b>	
LATITUDE = 40°49'51.98" (40.831106)	
LONGITUDE = 103°50'59.91" (103.849975)	
<b>NAD 27 (TARGET BOTTOM HOLE)</b>	
LATITUDE = 40°49'52.03" (40.831119)	
LONGITUDE = 103°50'58.10" (103.849472)	

**UINTAH ENGINEERING & LAND SURVEYING**  
85 SOUTH 200 EAST - VERNAL, UTAH 84078  
(435) 789-1017

SCALE 1" = 1000'	DATE SURVEYED: 03-15-13	DATE DRAWN: 03-21-13
PARTY J.H. C.M. M.D.	REFERENCES G.L.O. PLAT	
WEATHER COOL	FILE WHITING OIL & GAS CORP.	