

LOG created using LPLOT VH Version 3.0, April 24, 2013, Copyright (C) 1999-2009 Pason Systems Corp.

**OPERATOR:** NOBLE ENERGY INC  
**WELL:** SHABLE LB32-68HN  
**LOCATION:** SEC33 T9N R60W  
**COUNTY:** WELD  
**STATE:** COLORADO  
**SPOT:** 288' FNL, 250' FWL  
**ELEVATION:** 4940' GL, 4956' KB  
**FIELD:** WILDCAT  
**SPUD DATE:** 4/15/2013  
**TD DATE:** 4/23/2013  
**DATES LOGGED:** 4/16/2013 - 4/23/2013  
**DEPTHS LOGGED:** 1000' - 10687'  
**GEOLOGISTS:** CHRIS WILLATT, TED STOCKWELL  
**DRILLING FLUID:** LSND  
**DRILLING RIG:** PRECISION 828  
**API:** 05-123-36800  
**LOG TYPE:** VERTICAL  
**SCALE:** 1:240 (5 inches per 100 feet)  
**REMARKS:** WELLSITE GEOLOGICAL SERVICES PROVIDED BY COLUMBINE LOGGING INC.

LOG CONTINUES ON FILE: Shable LB32-68HN Horiz.lplot

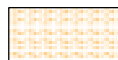
### LITHOLOGIES



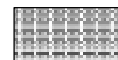
Sandstone



Shaly Sandstone



Shaly Siltstone



Silty Shale

### ENGINEERING SYMBOLS



Connection



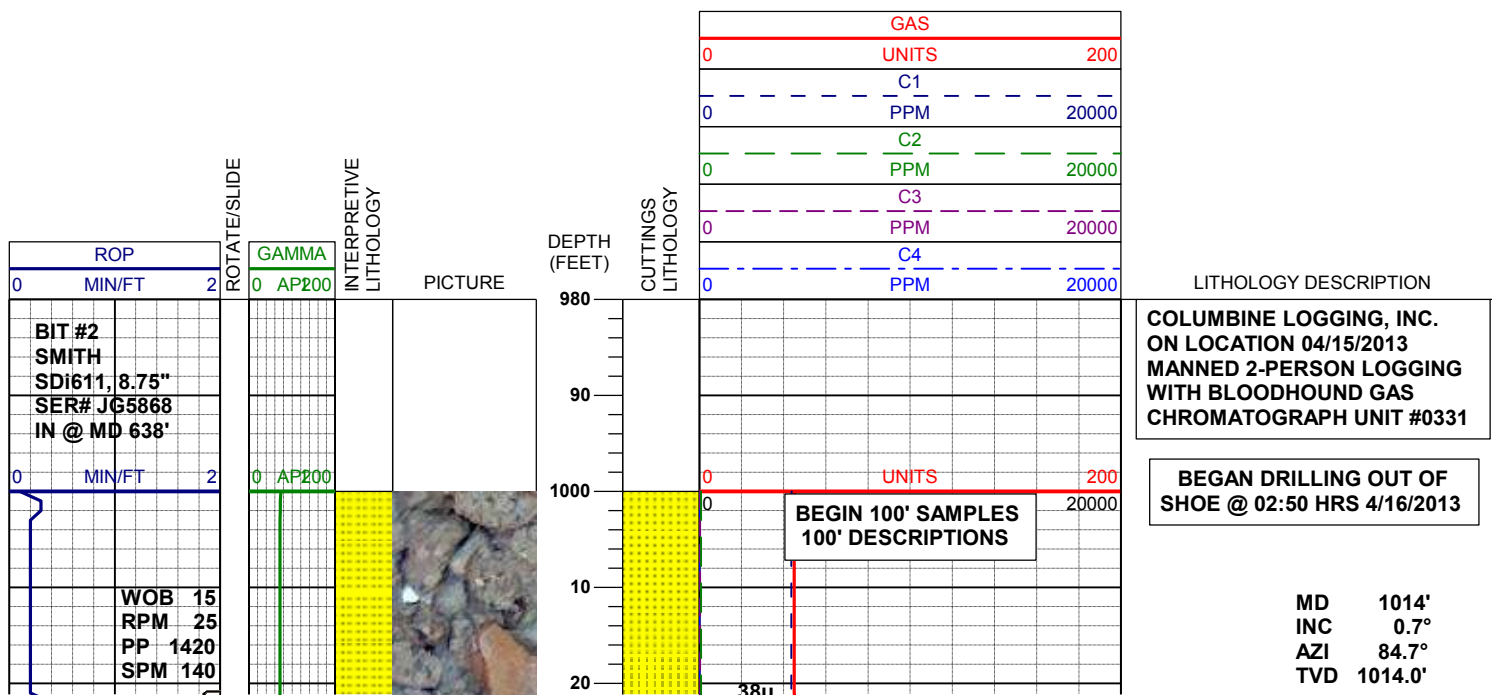
Connection Gas

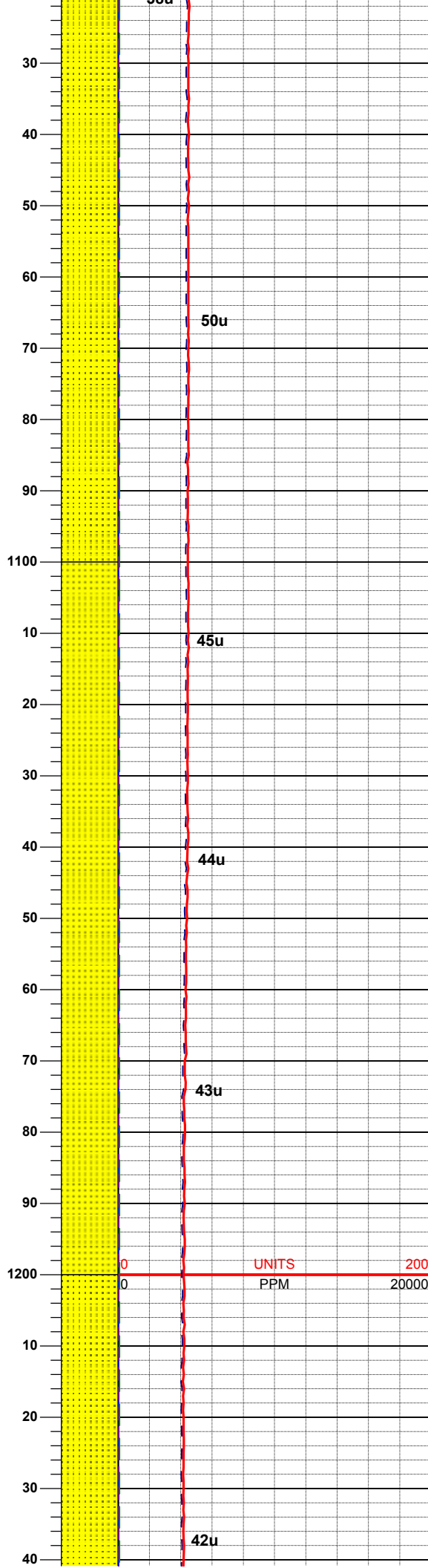
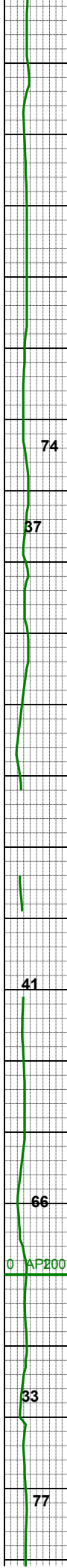
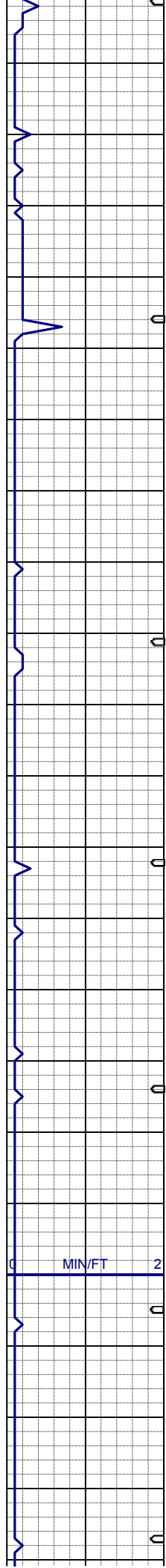


Midnight Depth



Arrow





SS:lt gy-clr, firm-fri, m-fgr, sbrn-dd-  
s-bang, mod srt, p consol, grn support  
- arg mtx, non calc, tr glau, tr sh

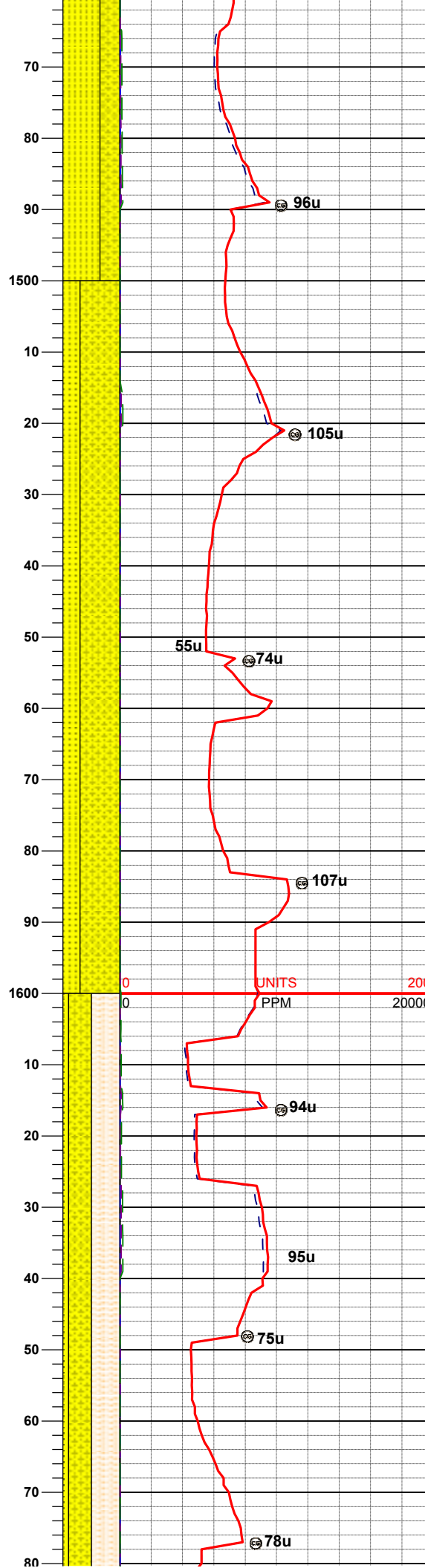
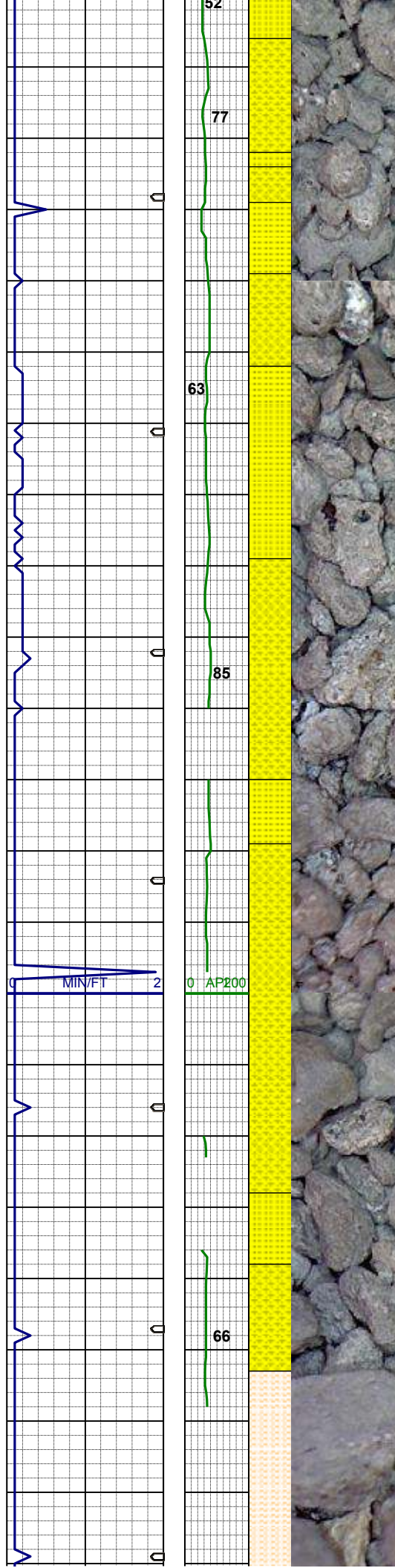
MD 1122'  
INC 1.0°  
AZI 67.2°  
TVD 1122.0'

SS:lt gy-clr, firm-fri, m-fgr, sbrn-dd-  
s-bang, mod srt, p consol, grn support  
- arg mtx, non calc, tr glau, tr sh

MD 1216'  
INC 0.8°  
AZI 25.3°  
TVD 1216.0'





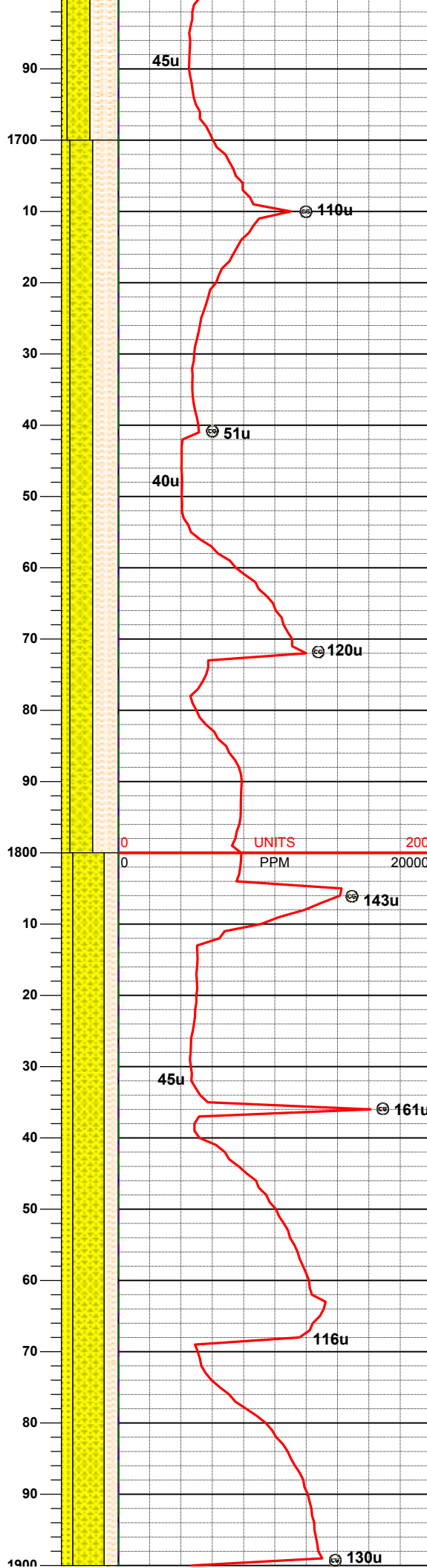
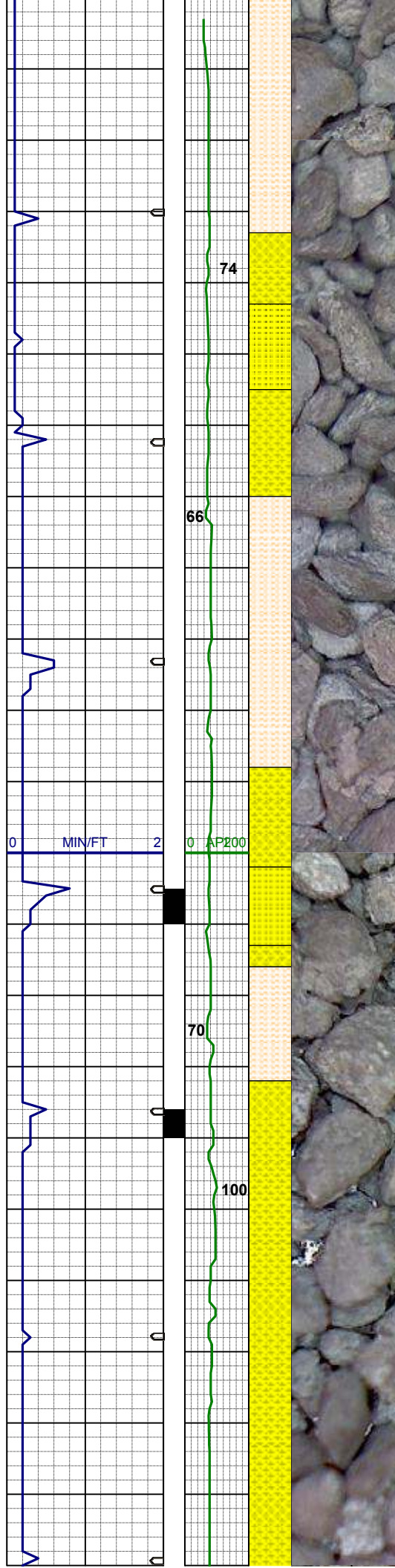


MD 1500'  
INC 1.1°  
AZI 256.8°  
TVD 1500.0'

SS:lt gy-clr, firm-fri, m-vfgr, sbrndd-sbang, mod srt, p consol, grn support  
- arg mtx, non calc, tr biot, tr sh  
SHYSS: vlt-mgy, vf- fgr, sbplty, mod srt, vsft- sft, arg mtx, p cmt, sl calc

MD 1595'  
INC 1.0°  
AZI 278.3°  
TVD 1594.9'

SS:lt gy-clr, firm-fri, m-vfgr, sbrndd-sbang, mod srt, p consol, grn support  
- arg mtx, non calc, tr biot, tr sh  
SHYSS: vlt-mgy, vf- fgr, sbplty, mod srt, vsft- sft, arg mtx, p cmt, sl calc  
SHYSLTST: lt-modgy, sbblky-sbplty, sft -firm, slty, arg- sl sil mtx, mod calc



MD 1690'  
INC 1.0°  
AZI 277.6°  
TVD 1689.9'  
WT 8.6 / VIS 34

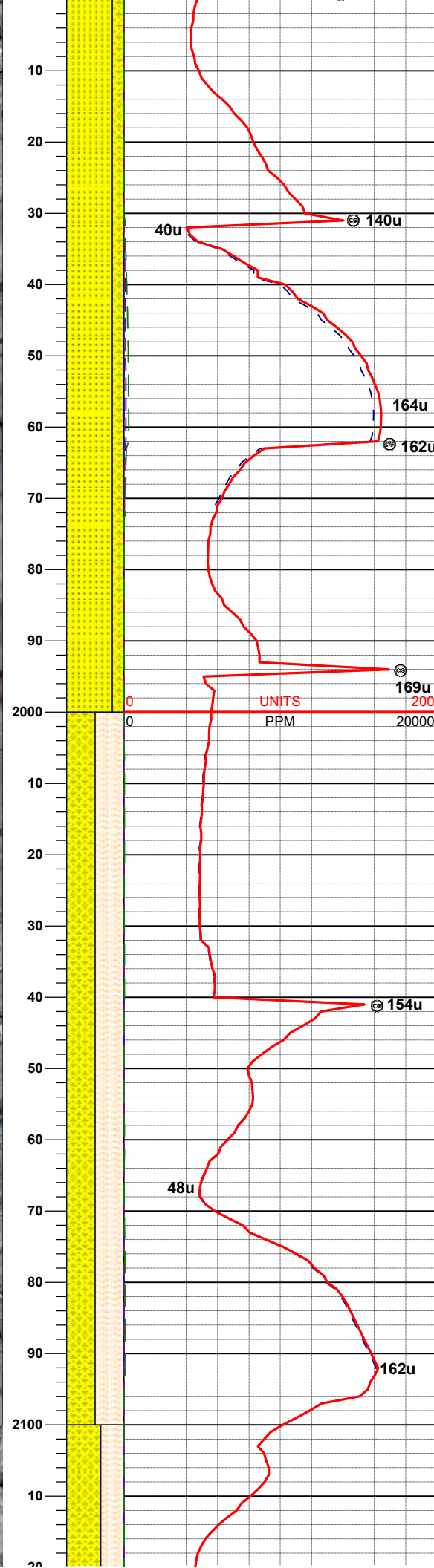
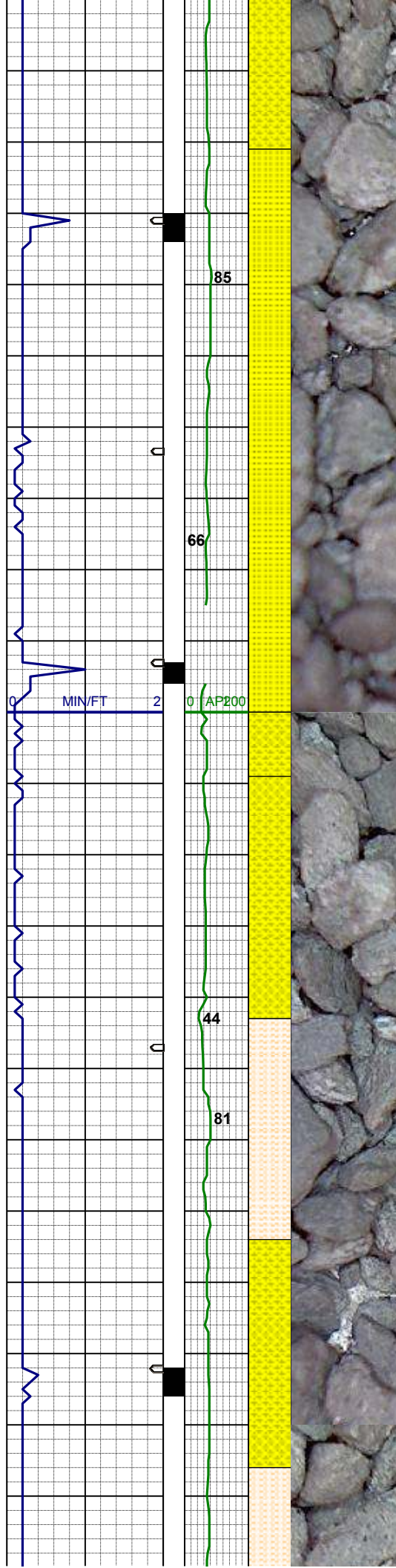
SS:lt gy-clr, firm-fri, m-vfgr, sbrndd-sbang, mod srt, p consol, grn support - arg mtx, non calc, tr biot, tr sh  
SHYSS: vlt-mgy, vf- fgr, sbply, mod srt, vsft- sft, arg mtx, p cmt, sl calc  
SHYSLTST: lt-modgy, sbply-sbply, sft -firm, slty, arg- sl sil mtx, mod calc

MD 1784'  
INC 1.5°  
AZI 223.4°  
TVD 1783.9'

SS:lt gy-clr, firm-fri, m-vfgr, sbrndd-sbang, mod srt, p consol, grn support - arg mtx, non calc, tr biot, tr sh  
SHYSS: vlt-mgy, vf- fgr, sbply, mod srt, vsft- sft, arg mtx, p cmt, sl calc  
SHYSLTST: lt-modgy, sbply-sbply, sft -firm, slty, arg- sl sil mtx, mod calc

MD 1879'  
INC 4.6°  
AZI 227.3°  
TVD 1878.8'



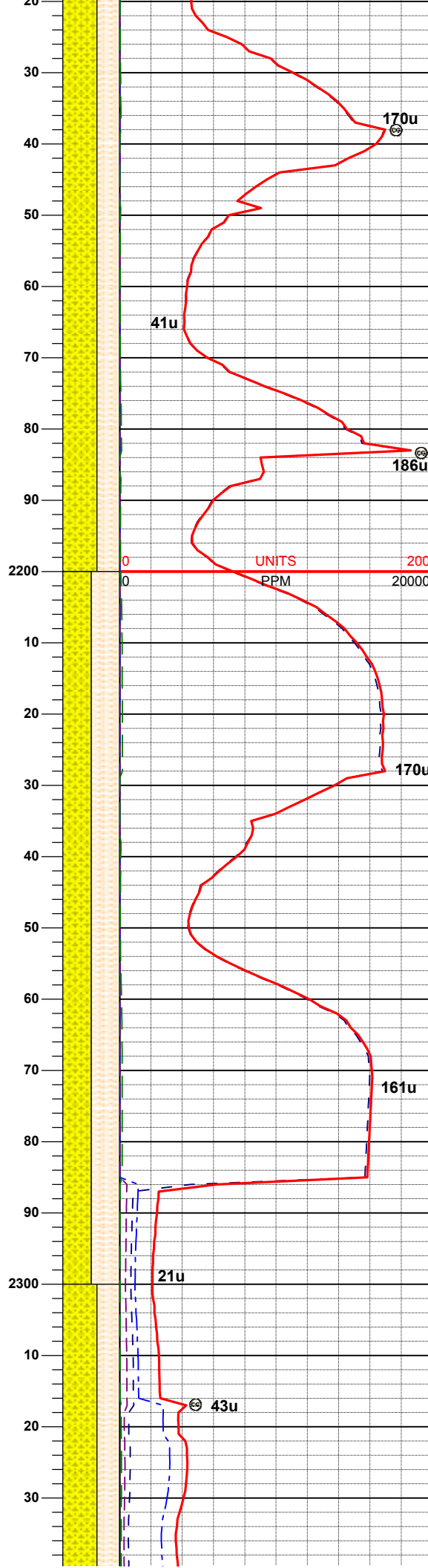
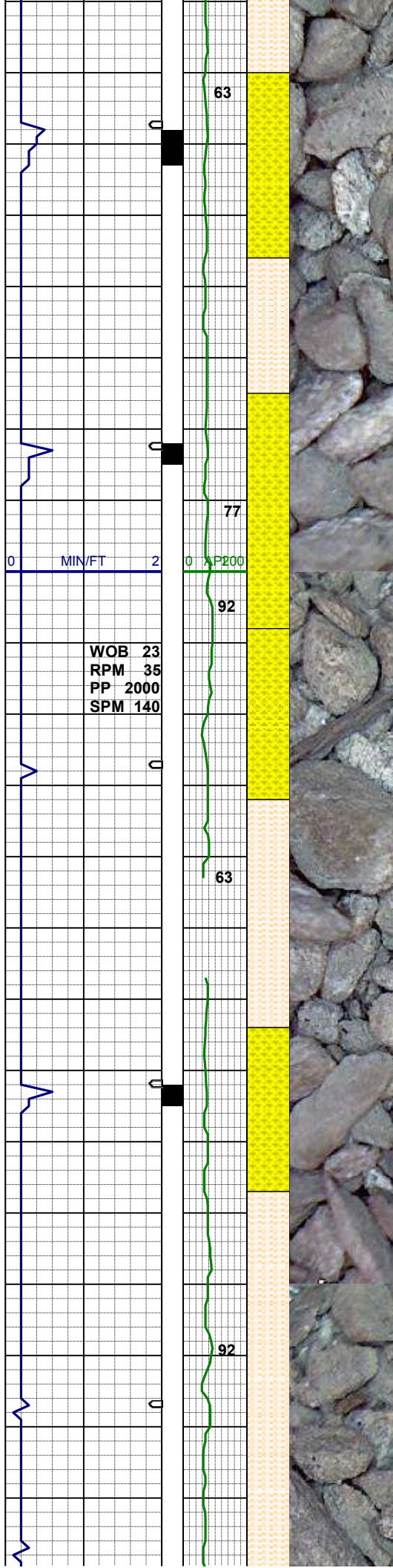


SS:lt gy-clr, firm-fri, m-vfgr, sbrndd-sbang, mod srt, p consol, grn support  
- arg mtx, non calc, tr biot, tr sh  
SHYSS: vlt-mgy, vf- fgr, sbply, mod srt, vsft- sft, arg mtx, p cmt, sl calc, grdg - shysltst

MD 1995'  
INC 6.1°  
AZI 210.3°  
TVD 1994.3'

SHYSS: vlt-mgy, vf- fgr, sbply, mod srt, vsft- sft, arg mtx, tr biot, sl calc, grdg - SHYSLTST: lt-modgy, sbply- sbply, sft -firm, slty, arg- sl sil mtx, mod calc

MD 2085'  
INC 6.6°  
AZI 206.4°  
TVD 2083.7'



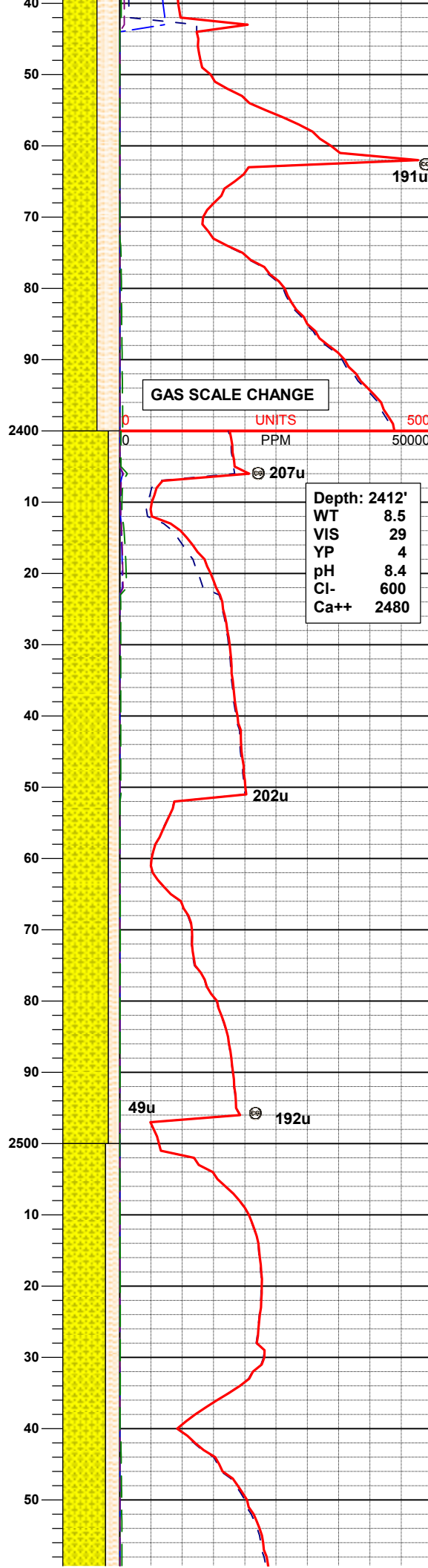
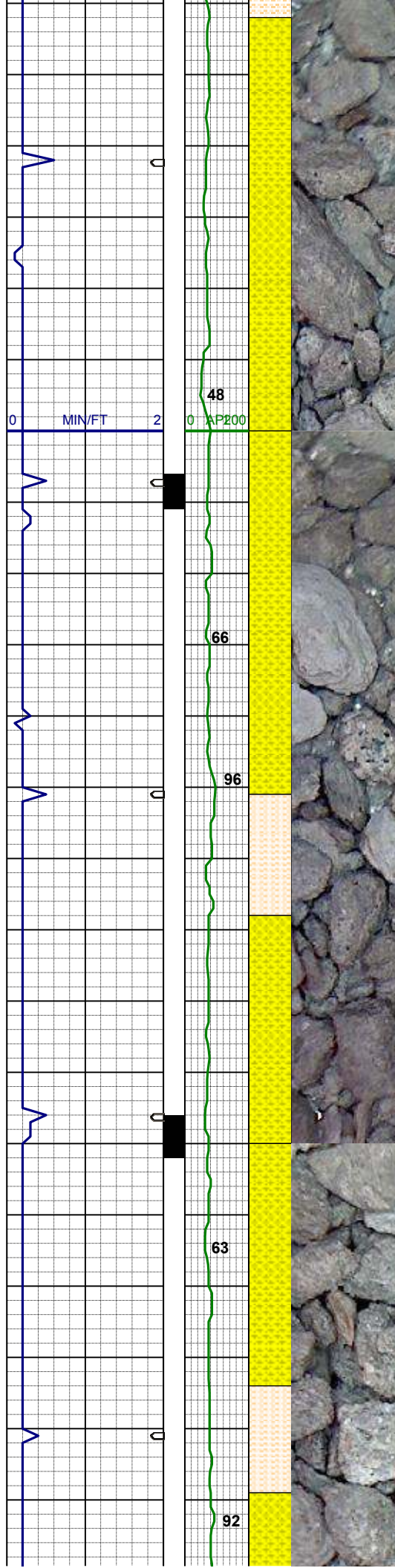
SHYSS: vlt-mgy, vf- fgr, sbplty, mod  
srt, vsft- sft, arg mtz, tr biot, sl calc,  
grdg - SHYSLTST: lt-modgy, sbblky-  
sbplty, sft -firm, slty, arg- sl sil mtz,  
mod calc

MD 2175'  
INC 7.8°  
AZI 208.8°  
TVD 2173.0'

SHYSS: vlt-mgy, vf- fgr, sbplty, mod  
srt, vsft- sft, arg mtz, tr biot, tr glau, sl  
calc, grdg - SHYSLTST: lt-modgy,  
sbblky-sbplty, sft -firm, slty, arg- sl sil  
mtz, mod calc

MD 2265'  
INC 8.3°  
AZI 208.3°  
TVD 2262.1'





SHYSS: vlt-mgy, vf- fgr, sbply, mod  
srt, vsft- sft, arg mtx, tr biot, tr glau, sl  
calc, grdg - SHYSLTST: lt-modgy,  
sbbiky-sbply, sft -firm, slty, arg- sl sil  
mtx, mod calc

MD 2355'  
INC 8.4°  
AZI 208.8°  
TVD 2351.1'

GAS SCALE CHANGE

UNITS  
PPM

Depth: 2412'  
WT 8.5  
VIS 29  
YP 4  
pH 8.4  
Cl- 600  
Ca++ 2480

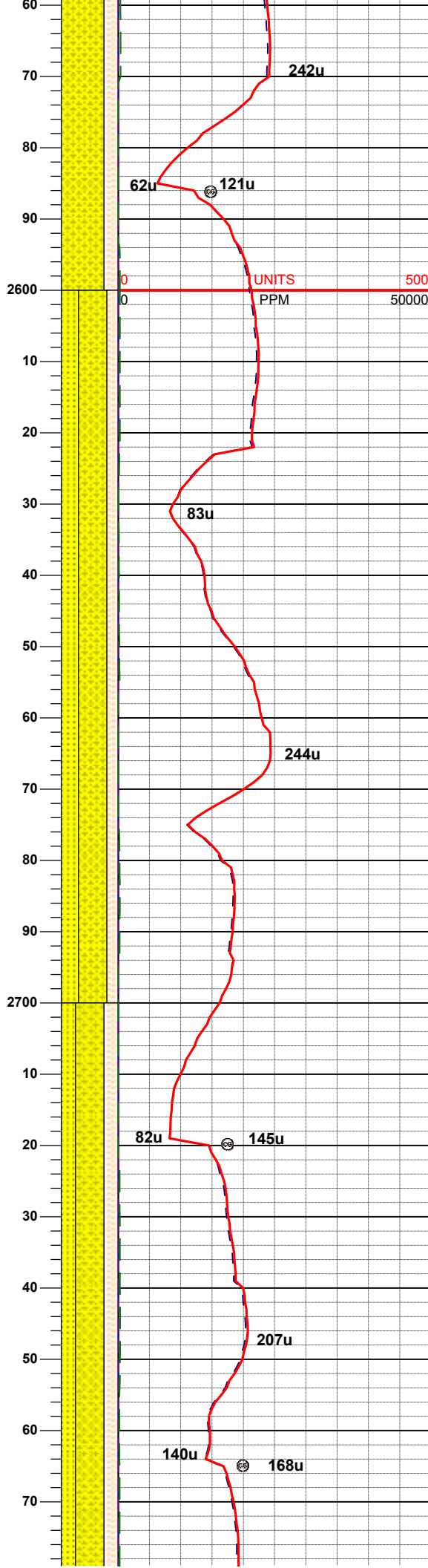
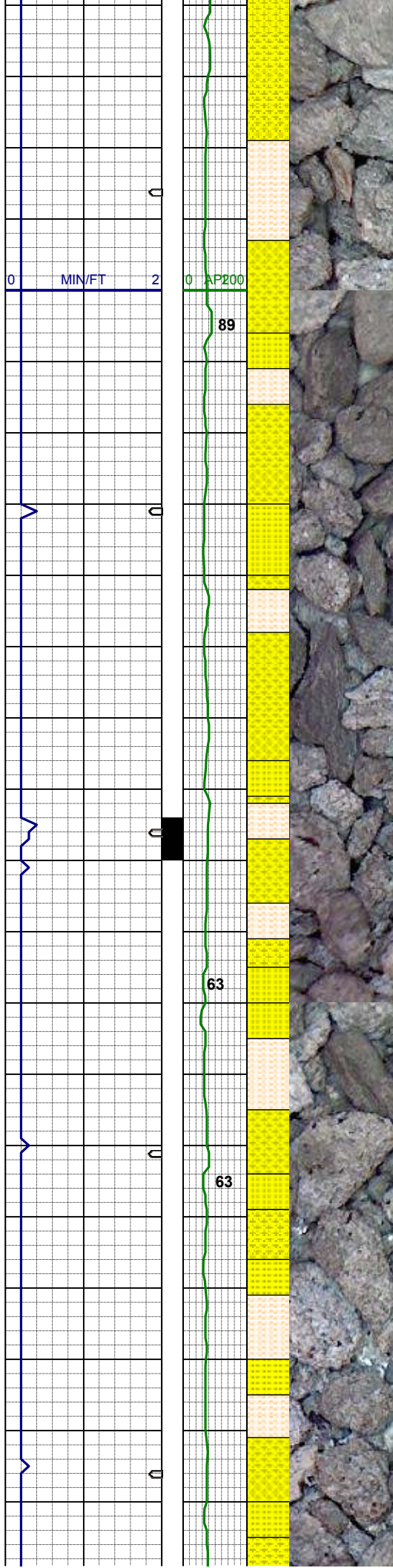
MD 2444'  
INC 8.0°  
AZI 214.1°  
TVD 2439.2'

SHYSS: vlt-mgy, occ clr, vf- fgr,  
sbply, mod srt, vsft- sft, arg mtx, tr  
biot, tr glau, sl calc, grdg -  
SHYSLTST: lt-modgy, sbbiky-sbply,  
sft -firm, slty, arg mtx, mod calc

MD 2534'  
INC 8.8°  
AZI 212.5°  
TVD 2528.3'

SHYSS: vlt-mgy, occ clr, vf- fgr,  
sbply, mod srt, vsft- sft, arg mtx, tr  
biot, tr glau, sl calc, grdg -  
SHYSLTST: lt-modgy, sbbiky-sbply,  
sft -firm, slty, arg mtx, mod calc





WT 8.5+ / VIS 29

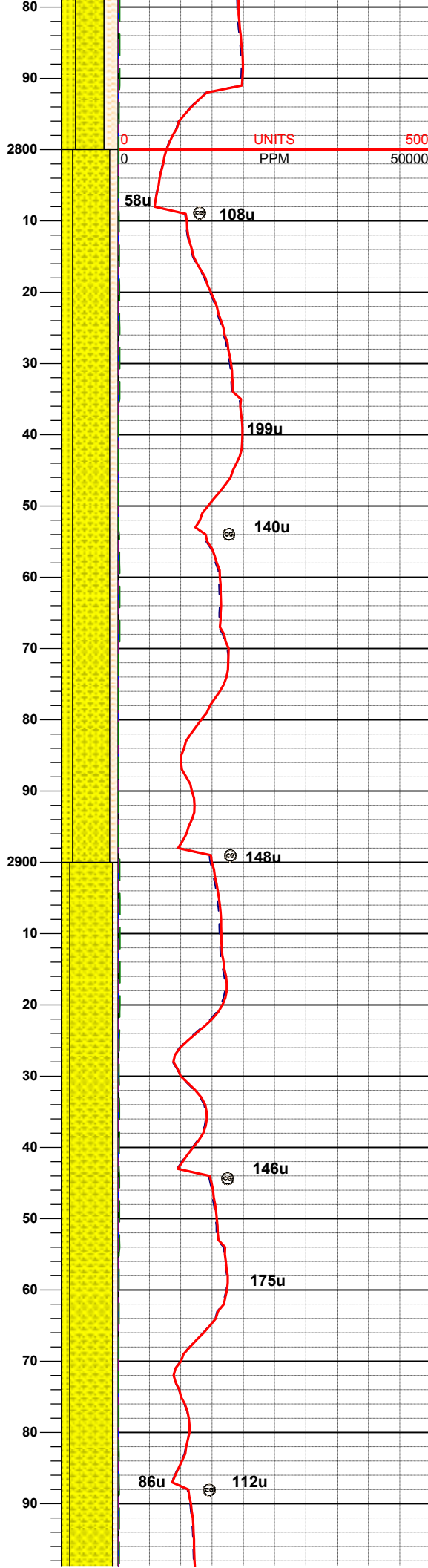
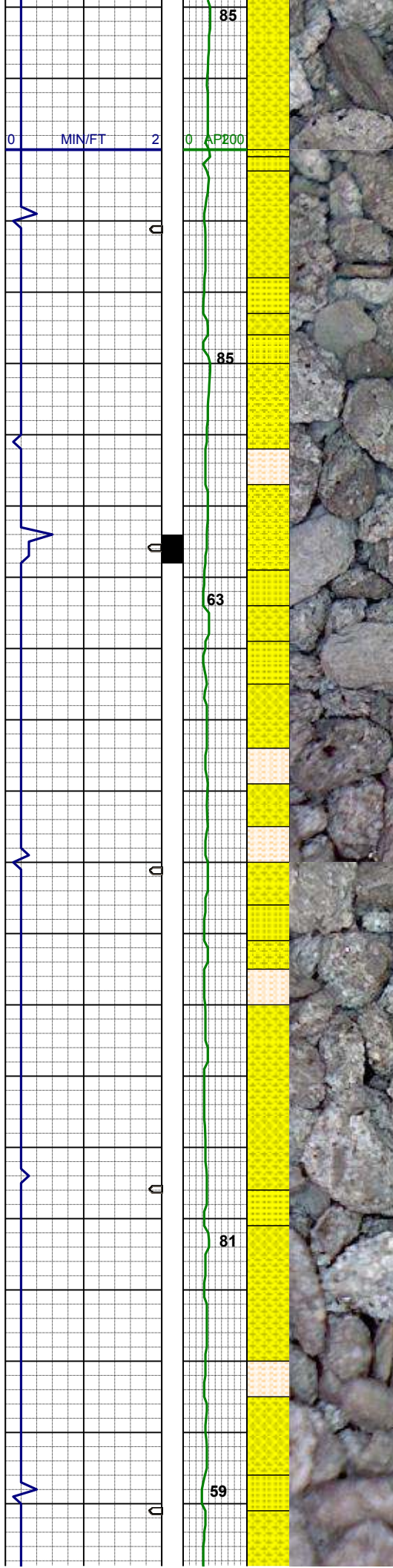
MD 2624'  
INC 8.7°  
AZI 208.1°  
TVD 2617.2'

SHYSS: vlt-mgy, occ clr, vf- fgr, sbply, mod srt, vsft- sft, arg mtx, tr biot, tr glau, sl calc  
SS:lt gy-clr, firm- hd, m-fgr, sbrndd-sbang, mod srt, mod consol, grn support - arg mtx, non calc, tr biot  
SHYSLTST: lt-modgy, sbply-sbply, sft -firm, slty, arg mtx, mod calc

WT 8.5+ / VIS 29

MD 2714'  
INC 8.5°  
AZI 210.3°  
TVD 2706.2'

SHYSS: vlt-mgy, occ clr, vf- fgr, sbply, mod srt, vsft- sft, arg mtx, tr biot, tr glau, sl calc  
SS:lt gy-clr, firm- hd, m-fgr, sbrndd-sbang, mod srt, mod consol, grn support - arg mtx, non calc, tr mica, tr glauc  
SHYSLTST: lt-modgy, sbply-sbply, occ ply, sft -firm, slty, arg mtx, mod calc



MD 2804'  
INC 8.7°  
AZI 208.5°  
TVD 2795.2'

SHYSS: vlt-mgy, occ clr, vf- fgr, sbply, mod srt, sft-firm, arg mtx, sl mica, tr glau, sl calc  
SS:lt gy-clr, firm- hd, m-fgr, sbrndd-sbang, mod srt, mod consol, sl arg mtx, non calc, tr mica, tr glauc  
SHYSLTST: lt-modgy, sbblky-sbply, occ ply, sft -firm, slty, arg mtx, mod calc

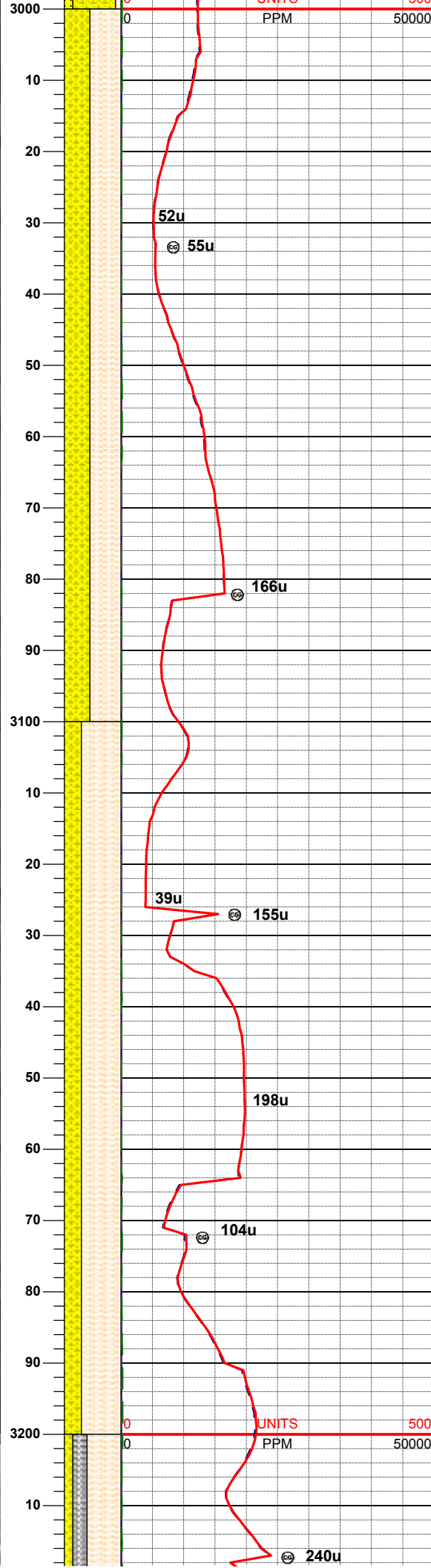
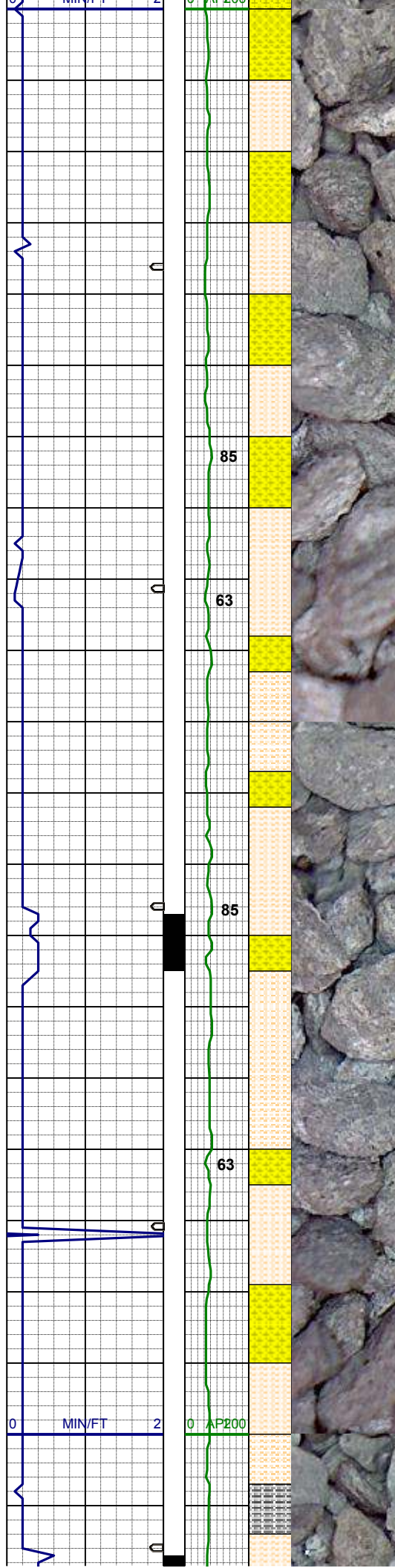
MD 2894'  
INC 8.7°  
AZI 212.2°  
TVD 2884.2'

WT 8.50 / VIS 29

SHYSS: vlt-mgy, occ clr, vf- fgr, sbply, mod srt, sft-firm, arg mtx, sl mica, tr glau, sl calc  
SS:lt gy-clr, firm- hd, m-fgr, sbrndd-sbang, mod srt, mod consol, sl arg mtx, non calc, tr mica, tr glauc  
SHYSLTST: lt-modgy, sbblky-sbply, occ ply, sft -firm, slty, arg mtx, mod calc

MD 2984'  
INC 9.1°  
AZI 209.5°  
TVD 2973.1'



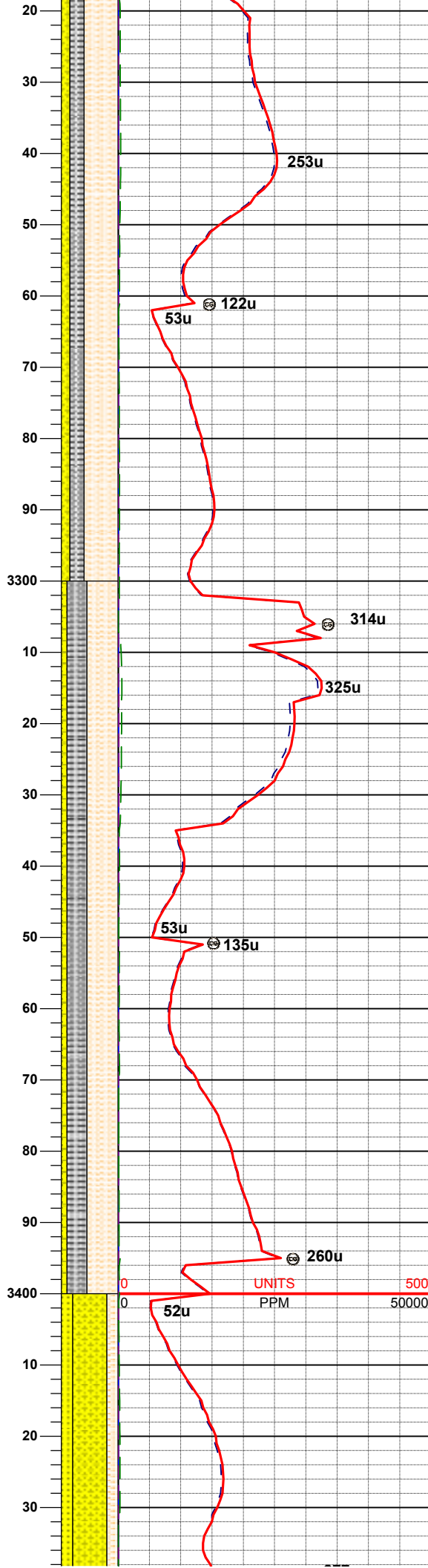
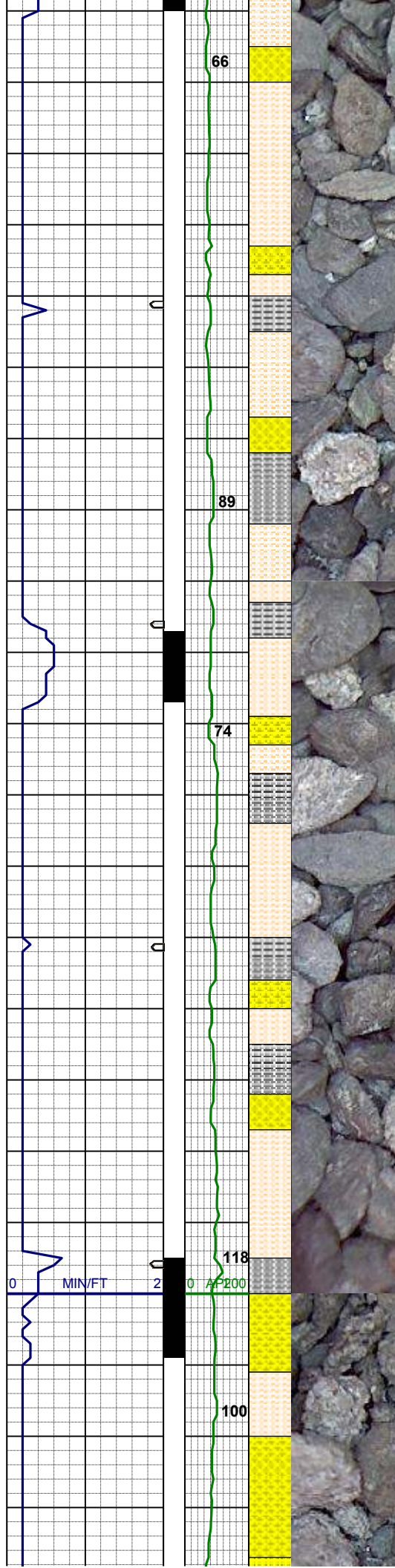


SHYSLTST: lt-modgy, sbblky-sbplty,  
occ plty, sft -firm, slty, arg mtx, mod  
calc  
SHYSS: vlt-mgy, occ clr, vf-fgr, sbblky  
-sbplty, mod srt, sft-firm, arg mtx, sl  
mica, tr glau, sl calc, sdy ip, tr ss

MD 3073'  
INC 9.2°  
AZI 208.3°  
TVD 3061.0'

SHYSLTST: lt-modgy, sbblky-sbplty,  
occ plty, sft -firm, slty, arg mtx, mod  
calc  
SHYSS: vlt-mgy, occ clr, vf-fgr, sbblky  
-sbplty, mod srt, sft-firm, arg mtx, sl  
mica, tr glau, sl calc, sdy ip, tr ss

MD 3163'  
INC 9.4°  
AZI 211.3°  
TVD 3149.8'



SHYSLTST: lt-modgy, sbblky-sbplty, occ plty, sft -firm, slty, arg mtx, mod calc. tr pyr  
SLTYSH: mod-dkgy, sbblky-sbplty, tr plty, sft-firm, sl calc  
SHYSS: vlt-mgy, occ clr, vf-fgr, sbblky -sbplty, mod srt, sft-firm, arg mtx, sl mica, tr glau, sl calc, sdy ip, tr ss

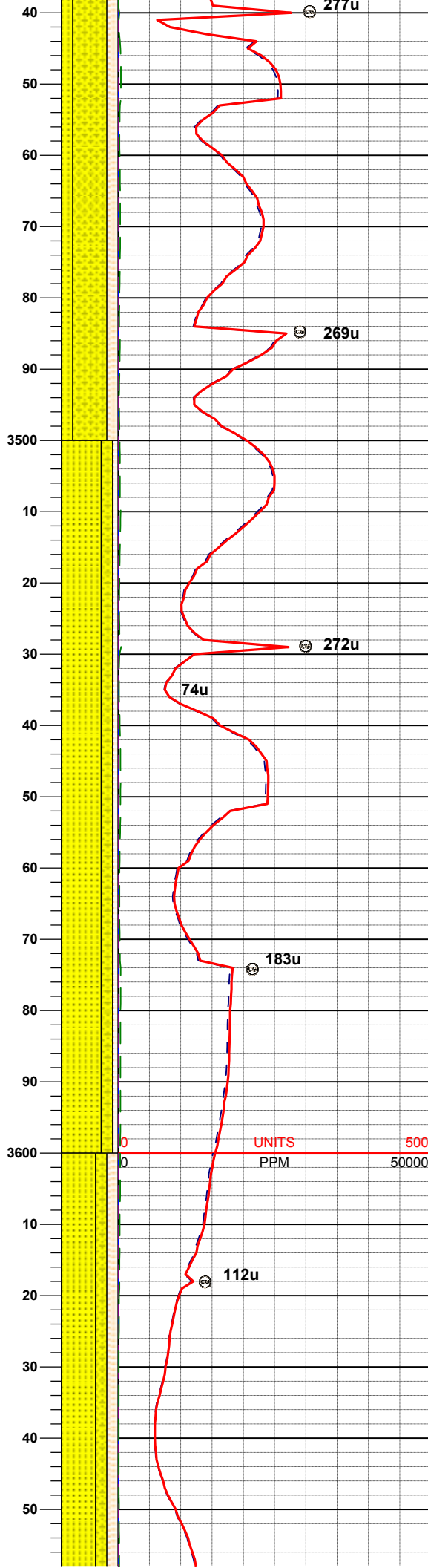
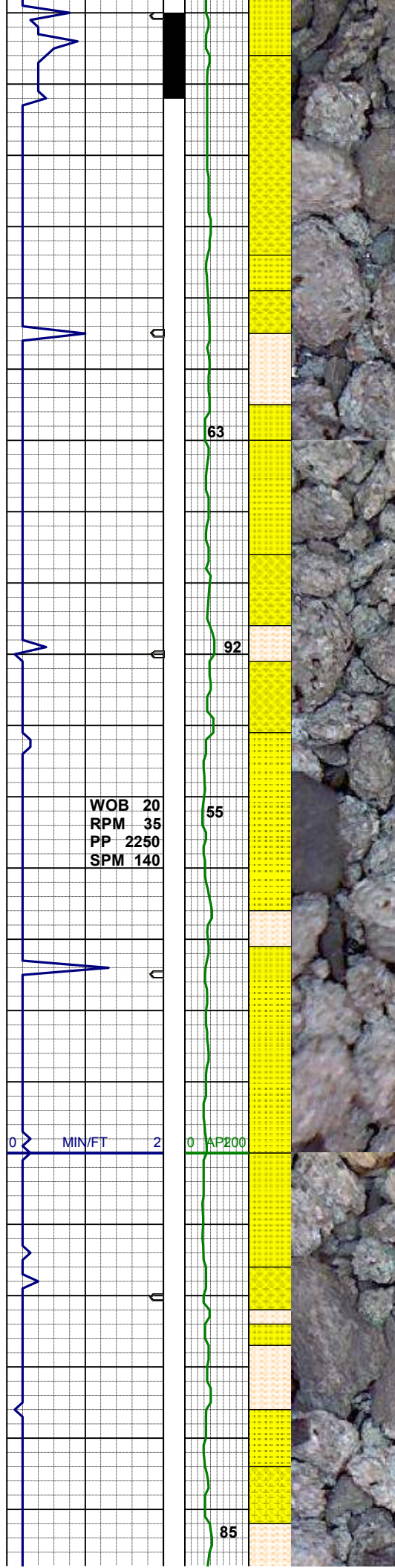
MD 3253'  
INC 8.9°  
AZI 207.8°  
TVD 3286.6'

SHYSLTST: lt-modgy, sbblky-sbplty, occ plty, sft -firm, slty, arg mtx, mod calc. tr pyr  
SLTYSH: mod-dkgy, sbblky-sbplty, tr plty, sft-firm, sl calc  
SHYSS: vlt-mgy, occ clr, vf-fgr, sbblky -sbplty, mod srt, sft-firm, arg mtx, sl mica, tr glau, sl calc, sdy ip, tr ss

MD 3343'  
INC 7.5°  
AZI 210.3°  
TVD 3327.7'

MD 3433'  
INC 6.6°  
AZI 212.5°  
TVD 3417.0'





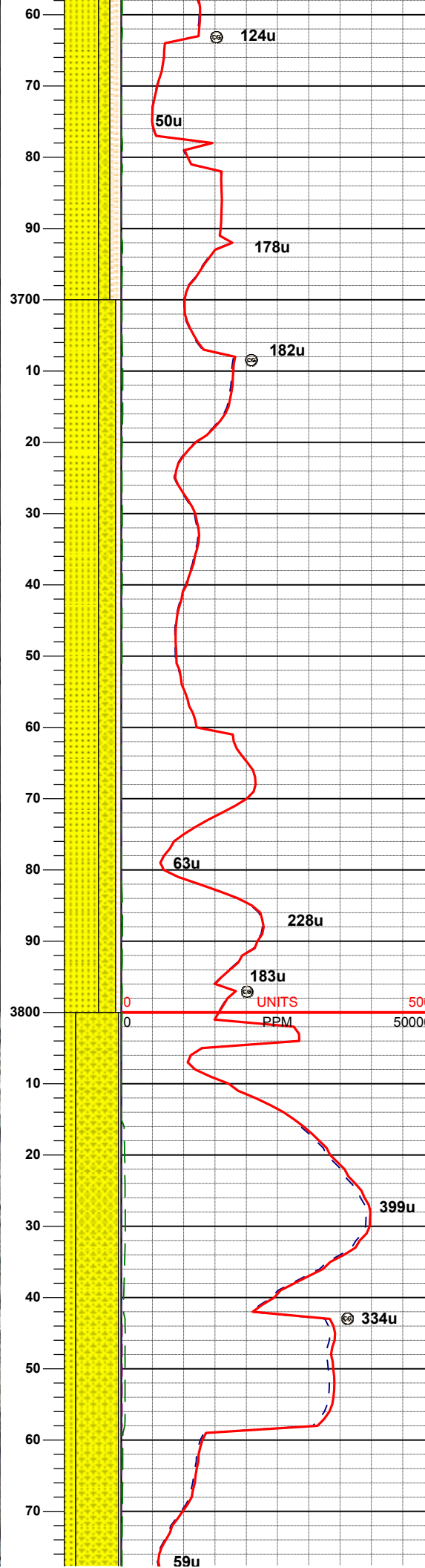
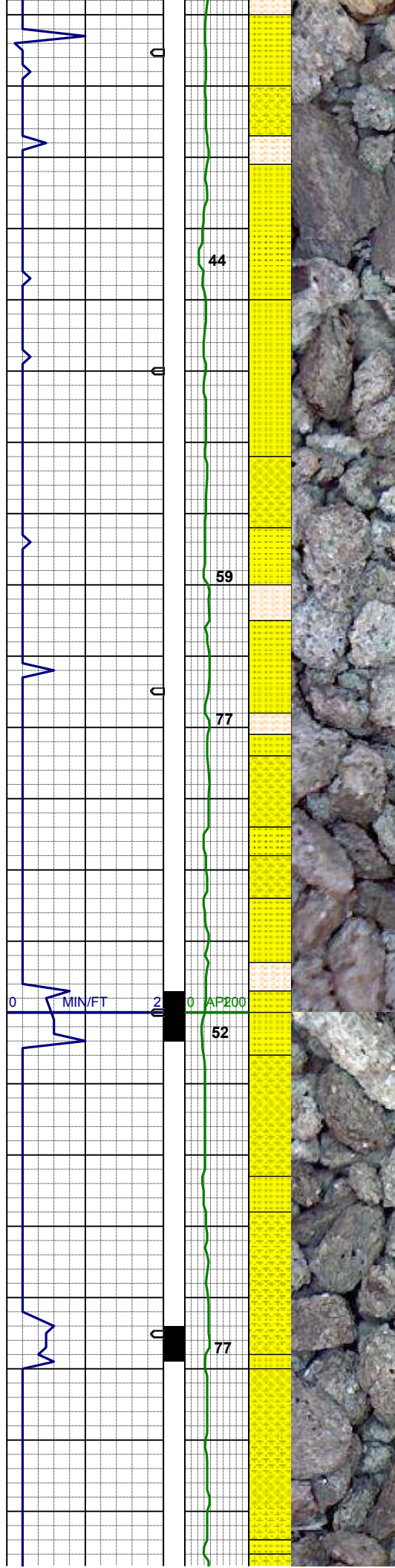
SHYSS: vlt-mgy, occ clr, vf-fgr, sbblky-sbplty, mod srt, sft-firm, arg mtx, sl mica, tr glauc, sl calc  
SHYSLTST: lt-modgy, sbblky-sbplty, occ plty, sft-firm, slty, arg mtx, mod calc  
SS:lt gy-clr, firm-hd, m-fgr, sbrndd-sbang, mod srt, mod consol, sl arg mtx, non calc, tr mica, tr glauc

MD 3523'  
INC 7.3°  
AZI 214.1°  
TVD 3506.4'

SS:lt gy-clr, firm-hd, m-fgr, sbrndd-sbang, mod srt, tr sl arg mtx, non calc, sl mica, tr glauc, tr pyr  
SHYSS: lt-mgy, occ clr, vf-fgr, sbblky-sbplty, mod srt, sft-firm, arg mtx, sl mica, sl calc, tr glauc  
SHYSLTST: mod-dkgy, sbblky-sbplty, sft-firm, slty, arg mtx, sl calc

MD 3613'  
INC 7.5°  
AZI 214.3°  
TVD 3595.6'

SS:lt gy-clr, firm-hd, m-fgr, sbrndd-sbang, mod srt, tr sl arg mtx, non calc, sl mica, tr glauc, tr pyr  
SHYSS: lt-mgy, occ clr, vf-fgr, sbblky-sbplty, mod srt, sft-firm, arg mtx, sl mica, sl calc, tr glauc  
SHYSLTST: mod-dkgy, sbblky-sbplty, sft-firm, slty, arg mtx, sl calc



tr plty, sft -firm, slty, arg mtx, sl calc, grdg-sltys

MD 3702'  
INC 7.7°  
AZI 212.2°  
TVD 3683.8'

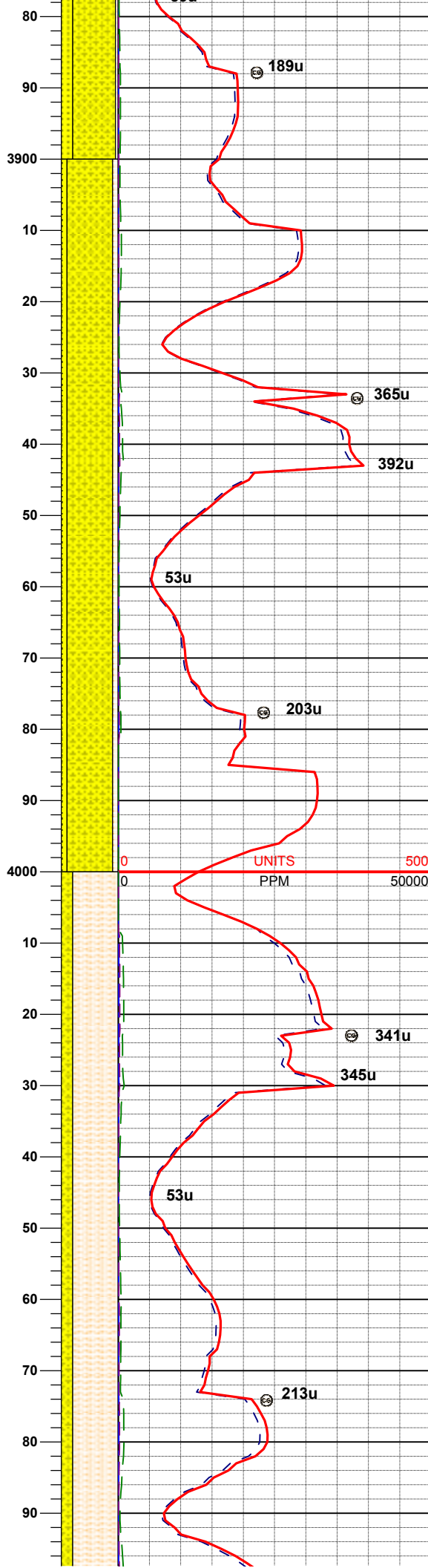
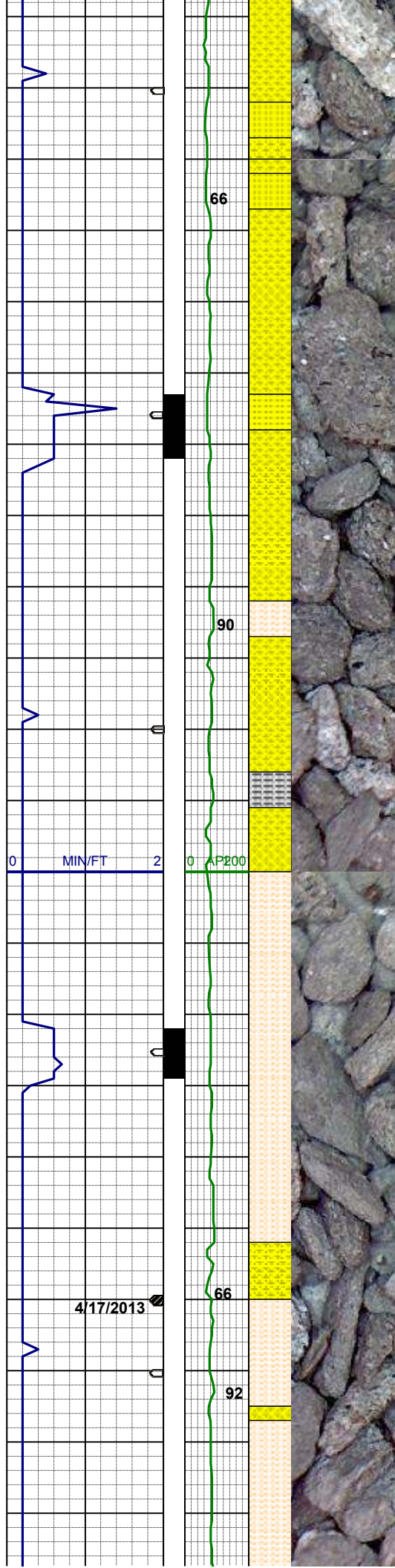
SS:lt gy-clr, firm- hd, m-fgr, sbrndd-sbang, mod srt, tr sl arg mtx, non calc, sl mica, tr glauc, tr pyr  
SHYSS: lt-mgy, occ clr, vf-fgr, sbblky-sbplty, mod srt, sft-firm, arg mtx, sl mica, sl calc, tr glauc  
SHYSLTST: mod-dkgy, sbblky-sbplty, tr plty, sft -firm, slty, arg mtx, sl calc, grdg-sltys

MD 3792'  
INC 7.5°  
AZI 214.3°  
TVD 3773.0'

SHYSS: lt-mgy-brn, occ clr, sbblky-sbplty, mod srt, sft-firm, arg mtx, sl mica, sl calc, tr glauc  
SS:lt gy-clr, firm- hd, m-fgr, sbrndd-sbang, mod srt, tr sl arg mtx, non calc, sl mica, tr glauc, tr pyr  
SHYSLTST: mod-dkgy, sbblky-sbplty, vfgr-fgr, tr plty, sft -firm, slty, arg mtx, sl calc, grdg-sltys

MD 3882'  
INC 7.5°  
AZI 214.3°  
TVD 3773.0'





INC 7.7°  
AZI 221.9°  
TVD 3862.2'

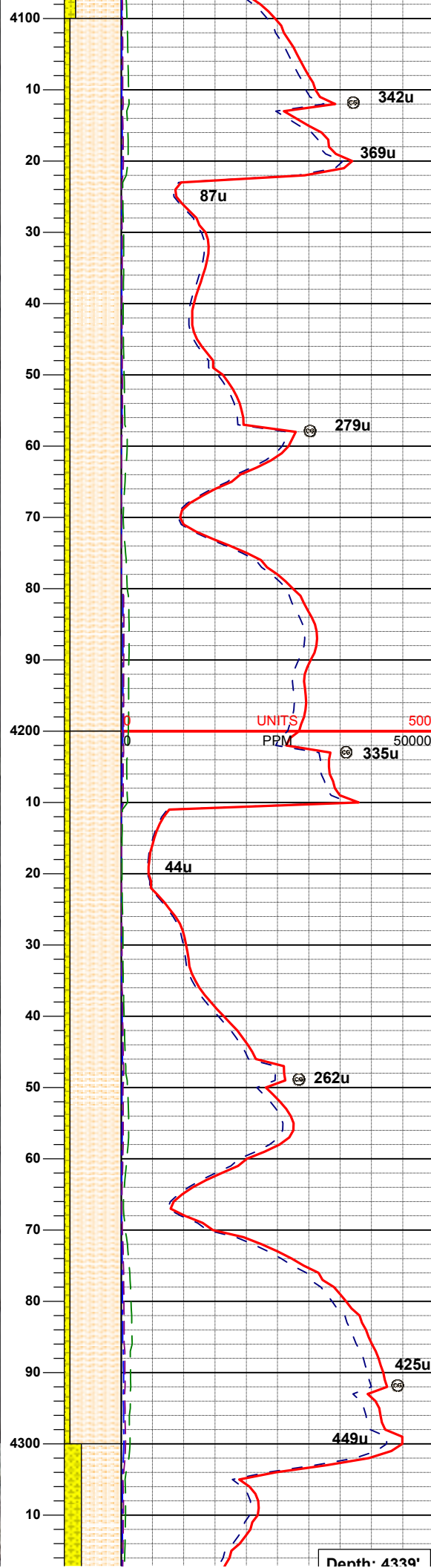
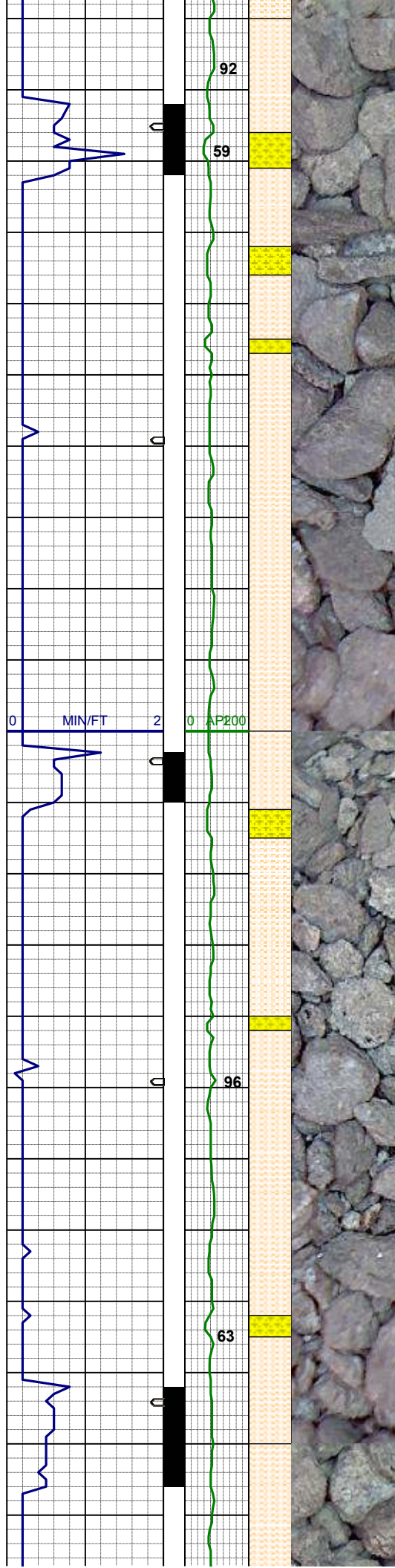
SHYSS: lt-mgy-brn, occ clr, sbblky-sbply, mod srt, sft-firm, arg mtx, sl mica, sl calc, tr glauc  
SS:lt gy-clr, firm- hd, m-fgr, sbrndd-sbang, mod srt, tr sl arg mtx, non calc, sl mica, tr glauc, tr pyr  
SHYSLTST: mod-dkgy, vfgr-fgr, sbblky-sbply, tr pty, sft-firm, slty, arg mtx, sl calc, grdg-sltys

MD 3972'  
INC 8.1°  
AZI 211.3°  
TVD 3951.4'

UNITS  
PPM

SHYSLTST: lt-modgy, tr dk gy, sbblky-sbply, tr pty, sft-firm, occ sdy ip, arg mtx, sl calc, grdg-sltys  
SHYSS: lt-mgy-brn, occ clr, vf-fgr, occ mgr, sbblky-sbply, mod srt, sft-firm, arg mtx, sl mica, sl calc, tr glauc

MD 4062'  
INC 9.0°  
AZI 207.8°  
TVD 4040.4'



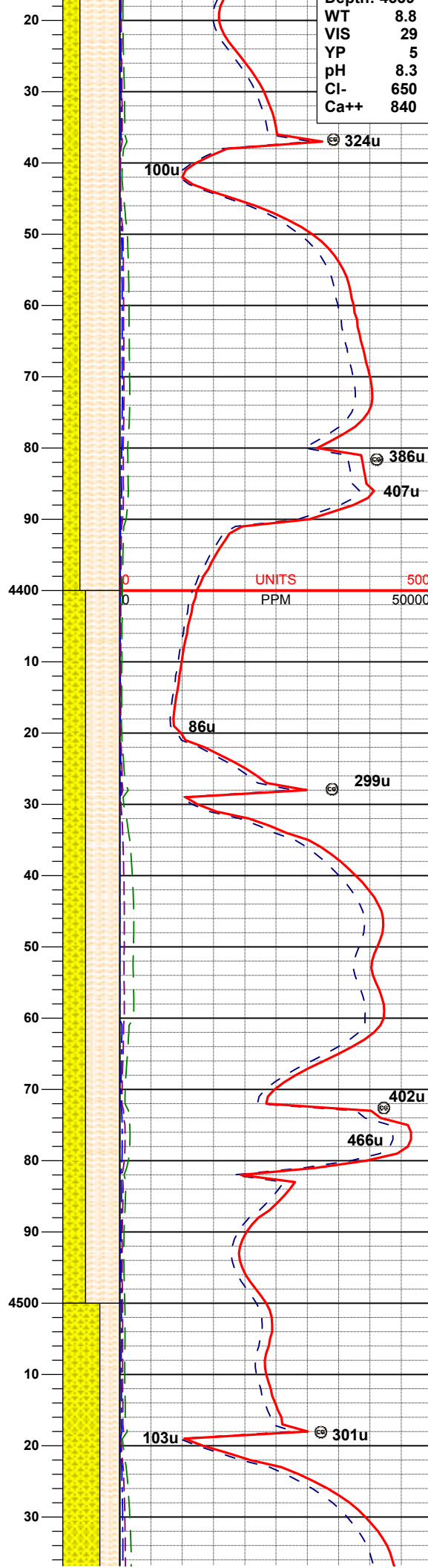
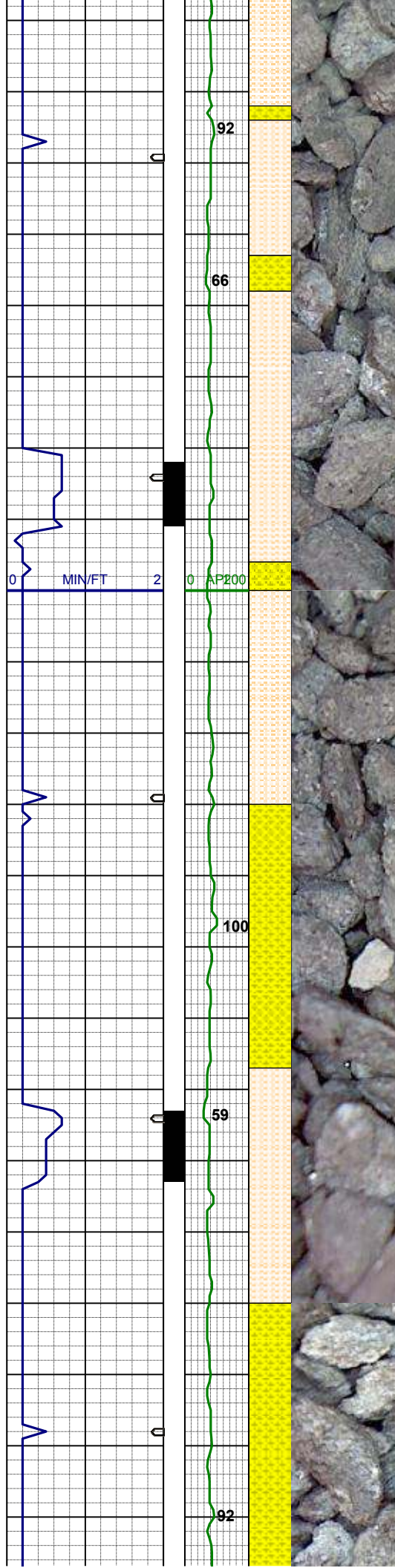
SHYSLTST: lt-modgy, tr dk gy, sbblky  
-sbply, tr pty, sft -firm, arg mtx, sl  
calc, grdg-sltys  
SHYSS: lt-mgy-brn, occ clr, vf-fgr, occ  
mgr, sbblky-sbply, mod srt, sft-firm,  
arg mtx, sl mica, sl calc, tr glauc

MD 4152'  
INC 8.0°  
AZI 208.3°  
TVD 4129.4'

MD 4242'  
INC 7.7°  
AZI 213.1°  
TVD 4218.6'

SHYSLTST: lt-modgy, tr dk gy, sbblky  
-sbply, tr pty, sft -firm, arg mtx, sl  
calc, grdg-sltys  
SHYSS: lt-mgy-brn, occ clr, vf-fgr,  
sbblky-sbply, mod srt, sft-firm, arg  
mtx, sl mica, sl calc, tr glau





WT 8.8  
VIS 29  
YP 5  
pH 8.3  
Cl- 650  
Ca++ 840

MD 4332'  
INC 8.7°  
AZI 209.7°  
TVD 4307.6'

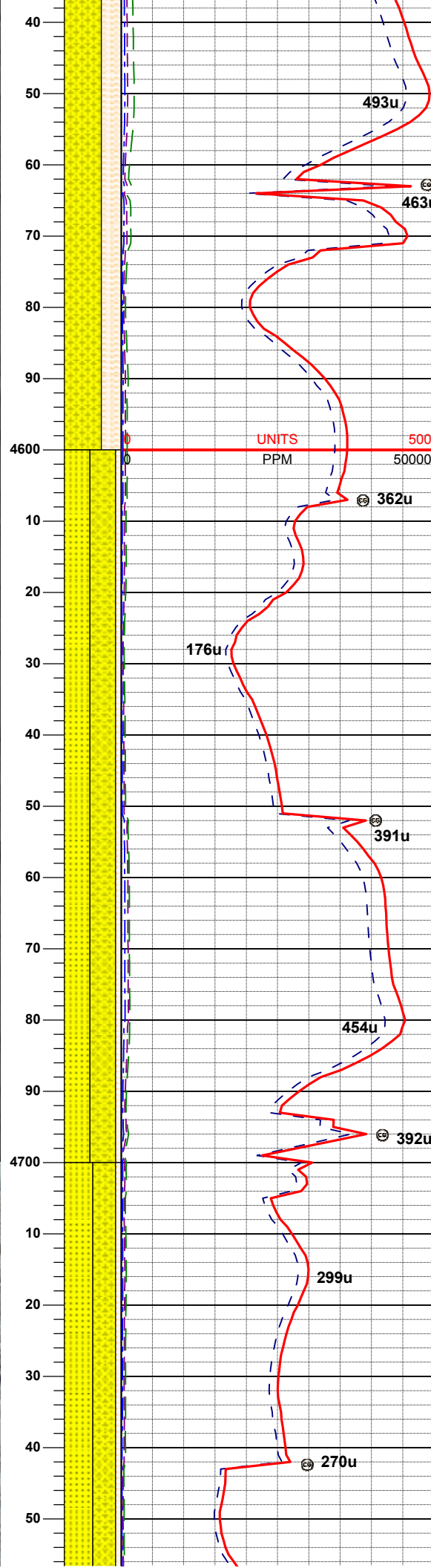
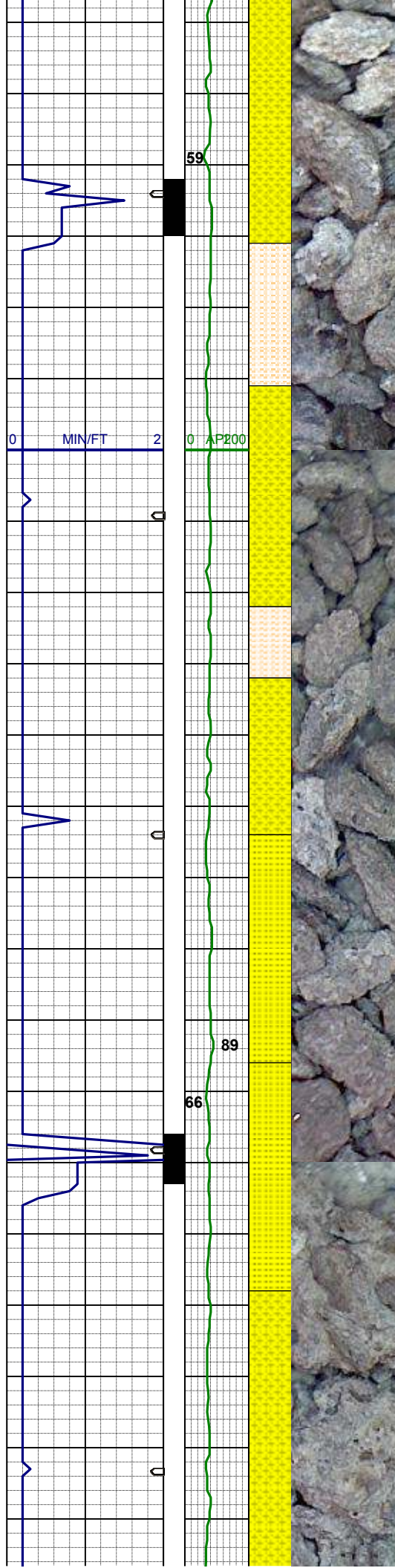
SHYSLTST: lt-modgy, tr dk gy, sbblky-sbplty, tr plty, sft -firm, sl sdy ip, arg mtx, sl calc, grdg-sltys  
SHYSS: lt-mgy-brn, occ clr, vf-fgr, sbblky-sbplty, mod srt, sft-firm, arg mtx, sl mica, sl calc

WT 8.8 / VIS 29

MD 4422'  
INC 8.1°  
AZI 214.3°  
TVD 4396.7'

SHYSLTST: lt-modgy, tr dkgy, sbblky-sbplty, tr plty, sft -firm, sdy ip, arg mtx, sl calc, tr glau grdg-sltys  
SHYSS: lt-mgy-brn, occ clr, vf-fgr, sbblky-sbplty, mod srt, sft-firm, arg mtx, sl mica, sl calc

MD 4512'  
INC 8.8°  
AZI 211.5°  
TVD 4485.7'



SHYSS: lt-mgy-brn, occ clr, ml-vfgr, sbbiky, mod srt, sft-firm, arg mtx, sl mica, sl calc  
SHYSLTST: lt-modgy, tr dkgy, sbbiky-sbply, tr ply, sft -firm, sdy ip, arg mtx, sl calc, tr glau grdg-sltys

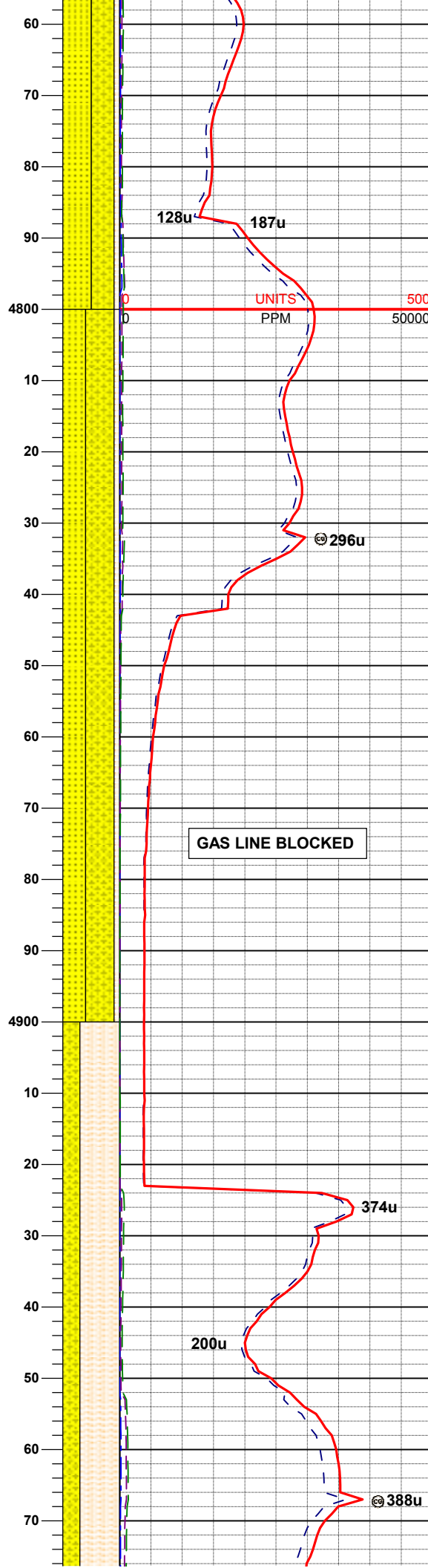
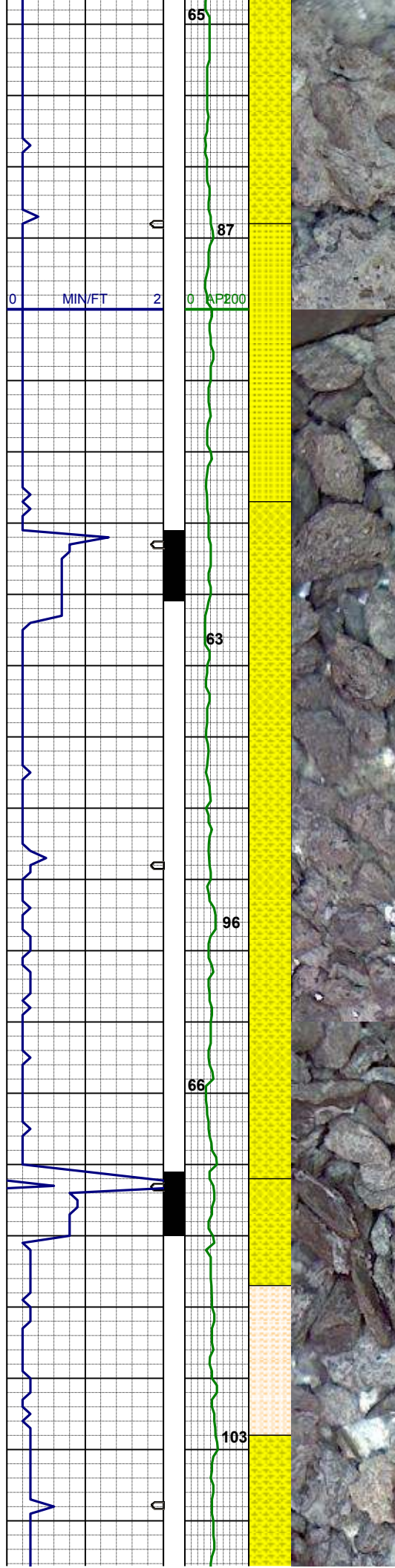
WT 8.8 / VIS 29  
MD 4602'  
INC 8.4°  
AZI 216.1°  
TVD 4574.7'

SHYSS: lt-mgy-brn, occ clr, ml-vfgr, sbbiky, mod srt, mod firm, arg mtx, sl mica, sl calc  
SS:lt gy-clr, firm- hd, m-fgr, sbrndd-sbang, mod srt, arg mtx, tr calc, sl mica, qtz wkst  
SHYSLTST: lt-modgy, tr dkgy, sbbiky-sbply, tr ply, sft -firm, sdy ip, arg mtx, sl calc, tr glau grdg-sltys

MD 4691'  
INC 7.7°  
AZI 214.1°  
TVD 4662.8'

SS:lt gy-clr, firm- hd, m-fgr, sbrndd-sbang, mod srt, arg mtx, tr calc, sl mica, qtz wkst  
SHYSS: lt-mgy-brn, occ clr, ml-vfgr, sbbiky, mod srt, mod firm, arg mtx, sl mica, sl calc  
SHYSLTST: lt-modav, tr dkav, sbbikv-





sbplty, tr plty, sft -firm, sdy ip, arg mtx, sl calc, tr glau grdg-sltys

MD 4781'  
INC 7.9°  
AZI 211.5°  
TVD 4752.0'

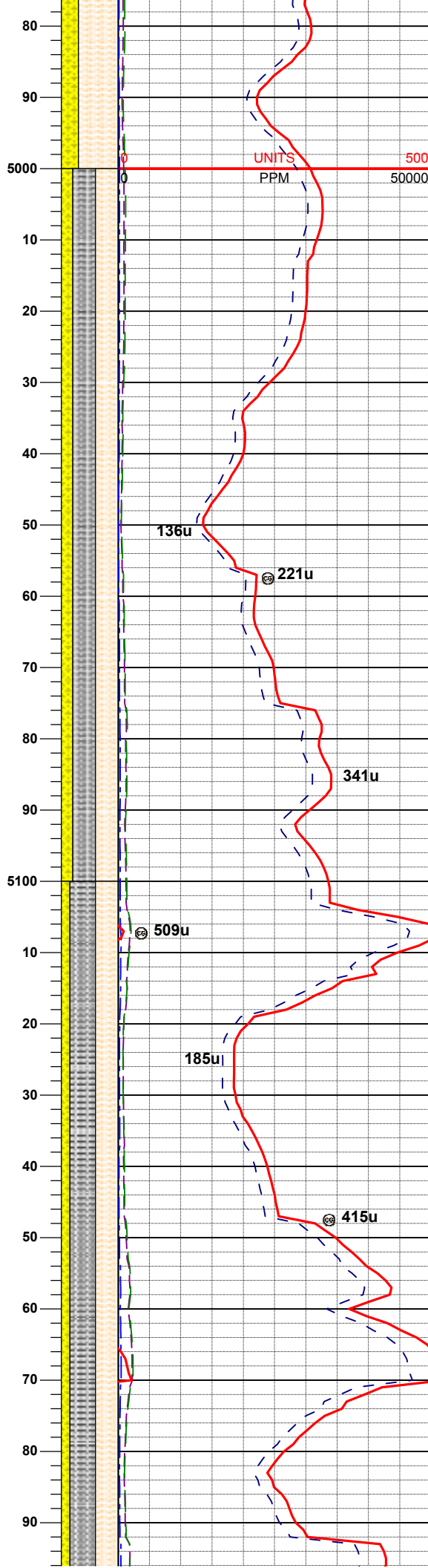
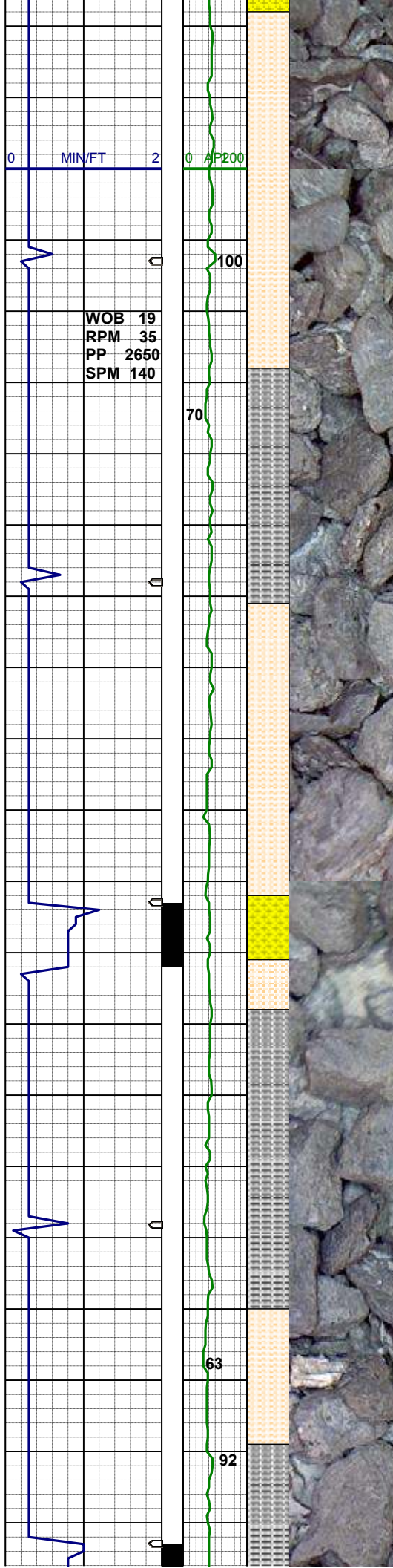
SHYSS: lt-mgy-brn, occ clr, ml-vfgr, sbblky, mod srt, mod firm, arg mtx, sl mica, sl calc  
SS:lt gy-clr, firm- hd, m-fgr, sbrndd-sbang, mod srt, arg mtx, tr calc, sl mica, qtz wkst  
SHYSLTST: lt-modgy, tr dkgy, sbblky-sbplty, tr plty, sft -firm, sdy ip, arg mtx, sl calc, tr glau grdg-sltys

MD 4871'  
INC 6.0°  
AZI 203.7°  
TVD 4841.3'

GAS LINE BLOCKED

SHYSLTST: lt-modgy, tr dkgy, sbblky-sbplty, tr plty, sft -firm, sdy ip, sl calc, grdg-sltys  
SHYSS: lt-mgy-brn, occ clr, ml-vfgr, sbblky, mod srt, mod firm, arg mtx, sl mica, sl calc

MD 4961'  
INC 4.5°  
AZI 204.8°  
TVD 4930.9'



WT 9.2 / VIS 45

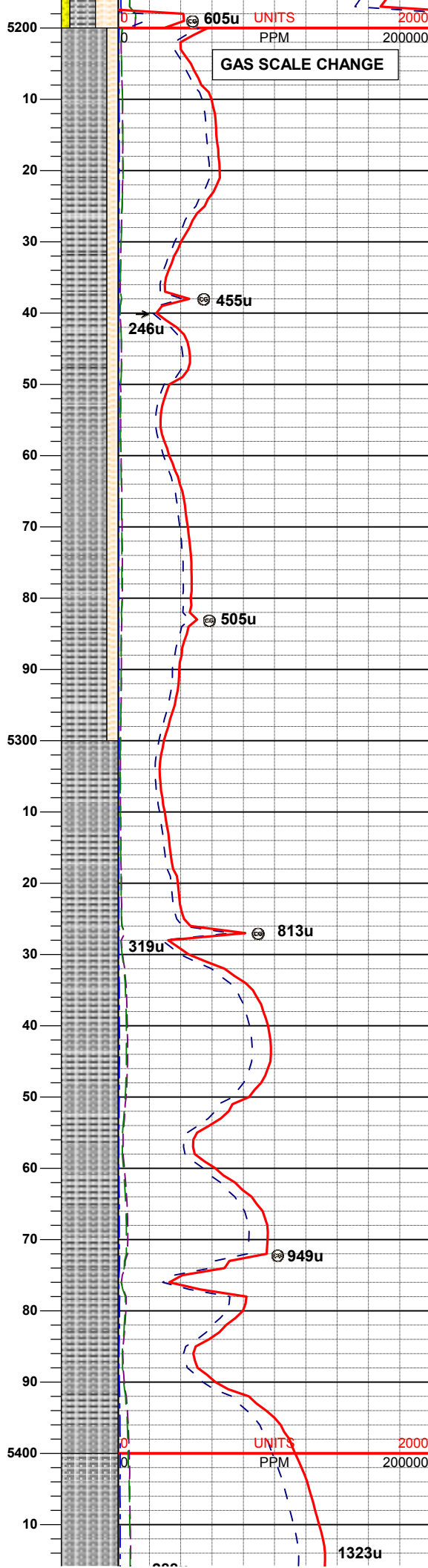
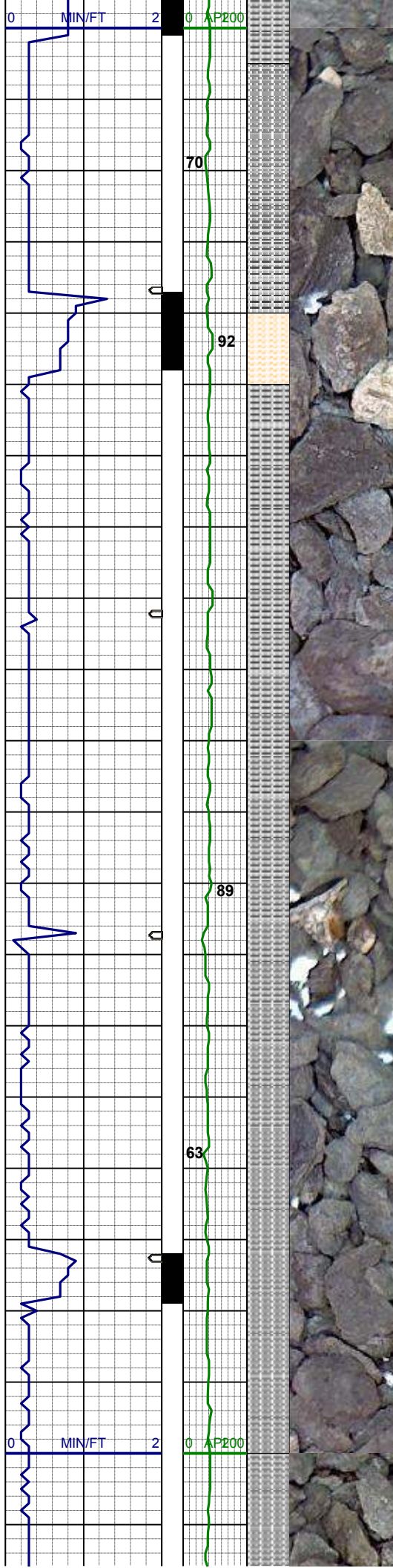
SLTYSH: m- dkgy, sbply-pty, sft-firm, rthy- gt tex, slty, sl calc, grdg-shysltst, sl mica  
SHYSLTST: lt-modgy, tr dkgy, sbblky-sbply, tr pty, sft -firm, sdy ip, sl calc, grdg-sltys  
SHYSS: lt-mgy-brn, occ clr, ml-vfgr, sbblky, mod srt, mod firm, arg mtx, sl mica, sl calc

MD 5051'  
INC 4.0°  
AZI 202.0°  
TVD 5020.7'

MD 5140'  
INC 3.0°  
AZI 219.0°  
TVD 5109.5'

SLTYSH: m- dkgy, sbply-pty, sft-firm, rthy- gt tex, slty, sl calc, grdg-shysltst, sl mica  
SHYSLTST: lt-modgy, tr dkgy, sbblky-sbply, tr pty, sft -firm, sdy ip, sl calc, grdg-sltys  
SHYSS: lt-mgy-brn, occ clr, ml-vfgr, sbblky, mod srt, mod firm, arg mtx, sl mica, sl calc





MD 5230'  
INC 2.1°  
AZI 183.4°  
TVD 5199.4'

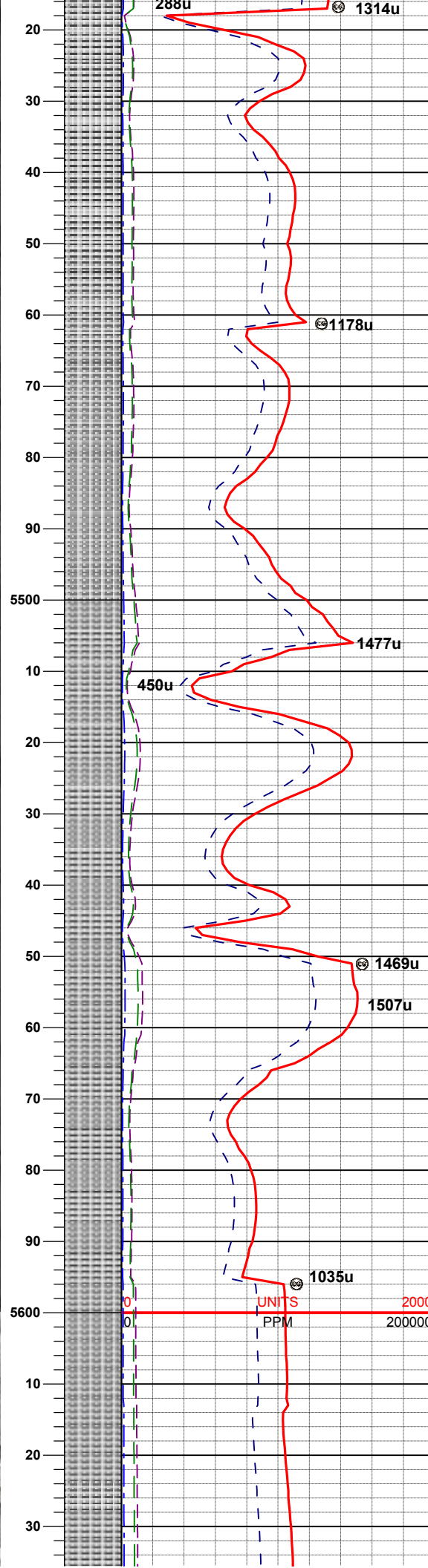
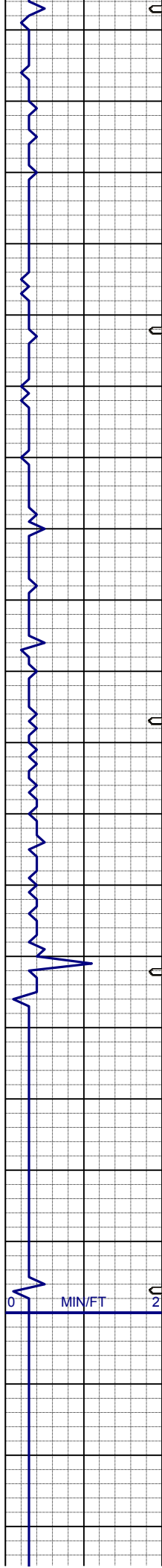
SLTYSH: m- dkgy, sbply-pty, sft-  
firm, rthy- gt tex, slty, sl calc, grdg-  
shysltst, sl mica  
SHYSLTST: lt-modgy, tr dkgy, sbblky-  
sbply, tr pty, sft -firm, sdy ip, sl calc,  
grdg-sltys

MD 5320'  
INC 1.5°  
AZI 120.6°  
TVD 5289.4'

SLTYSH: m- dkgy, sbply-pty, sft-  
firm, rthy- gt tex, slty, sl calc, grdg-  
shysltst

WT 9.3 / VIS 43

MD 5410'  
INC 0.5°  
AZI 141.5°  
TVD 5379.4'



SLTYSH: lt- dkg, sbplty-plty, sft-firm, rthy- gt tex, slty, sl calc, grdg-shysltst

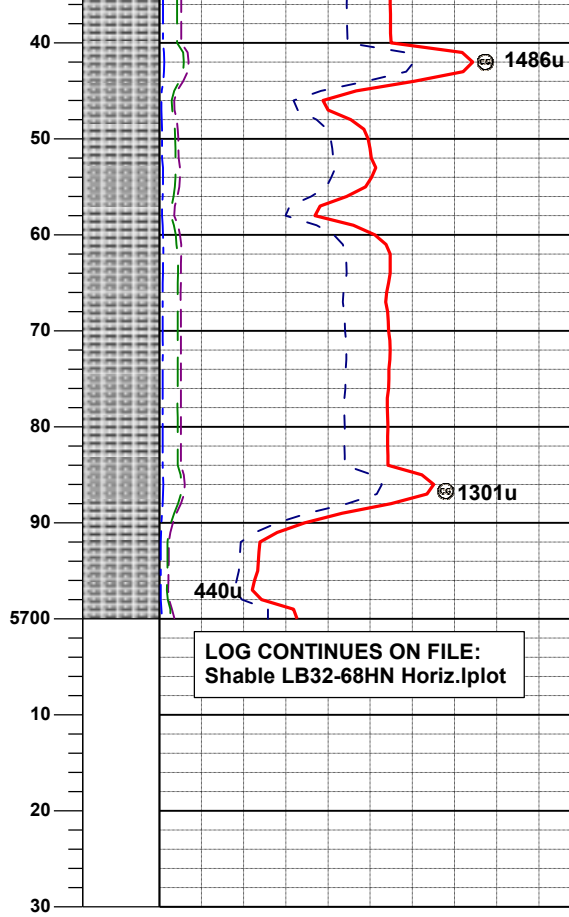
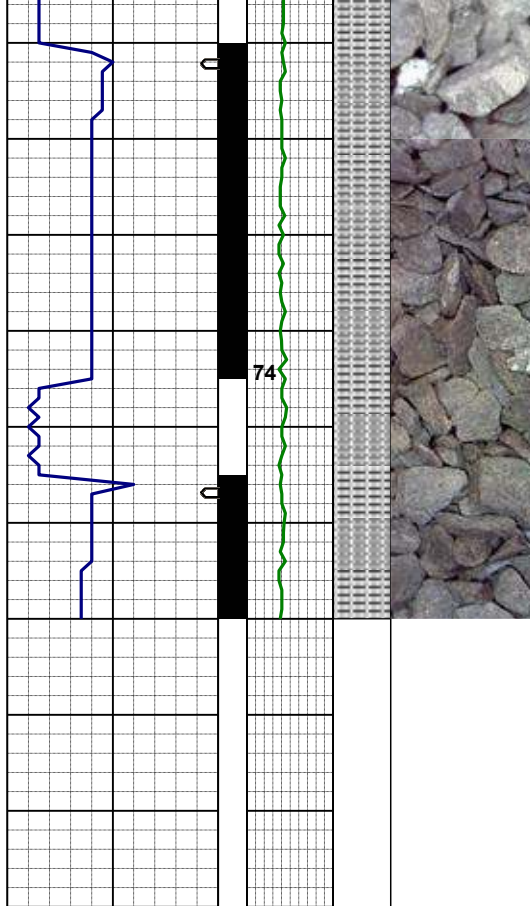
WT 9.7 / VIS 43

MD 5500'  
INC 0.4°  
AZI 184.6°  
TVD 5469.4'

SLTYSH: m- dkg, sbplty-plty, sft-firm, rthy- gt tex, slty, sl calc, grdg-shysltst

MD 5590'  
INC 0.5°  
AZI 152.4°  
TVD 5559.4'





SLTYSH: m- dkgy, sbply-pty, sft-  
firm, rthy- gt tex, slty, sl calc, grdg-  
shysltst

MD 5680'  
INC 4.6°  
AZI 258.4°  
TVD 5649.3'

THANK YOU FOR CHOOSING  
COLUMBINE LOGGING, INC.