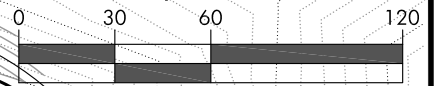


ROAD QUANTITIES:
TOTAL CUT: 1850 CUBIC YARDS
TOTAL FILL: 1300 CUBIC YARDS
NET = 550 (CUT) CUBIC YARDS

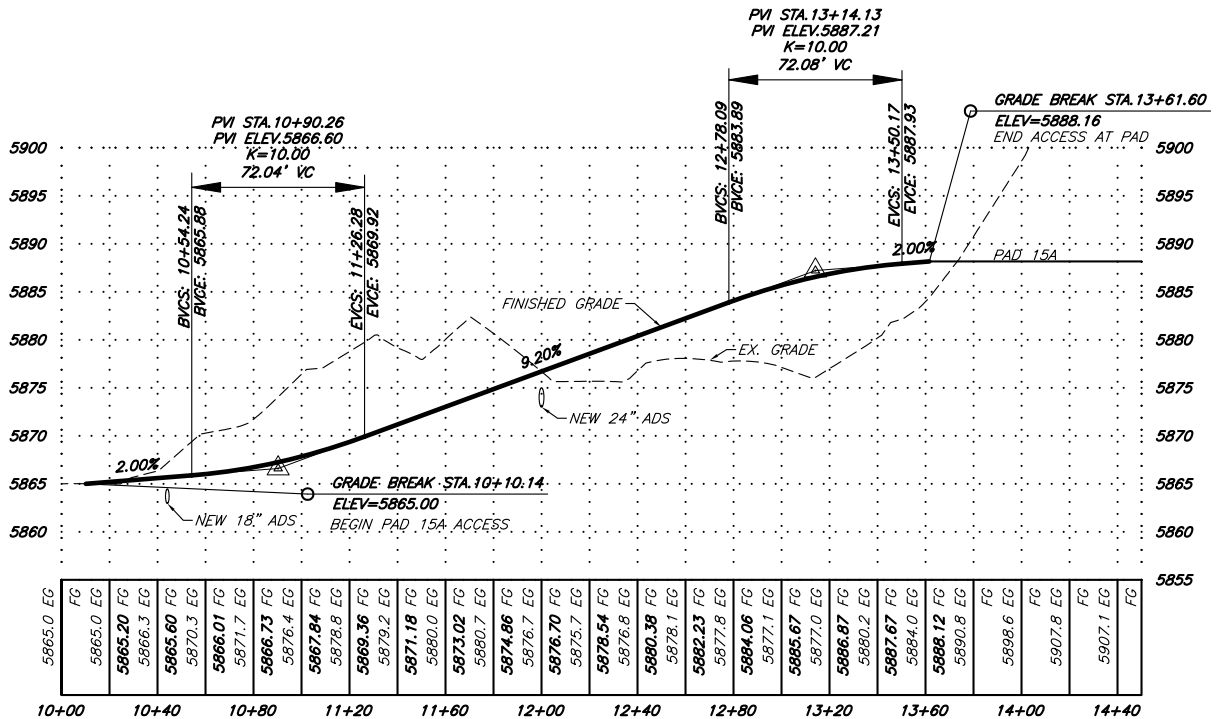
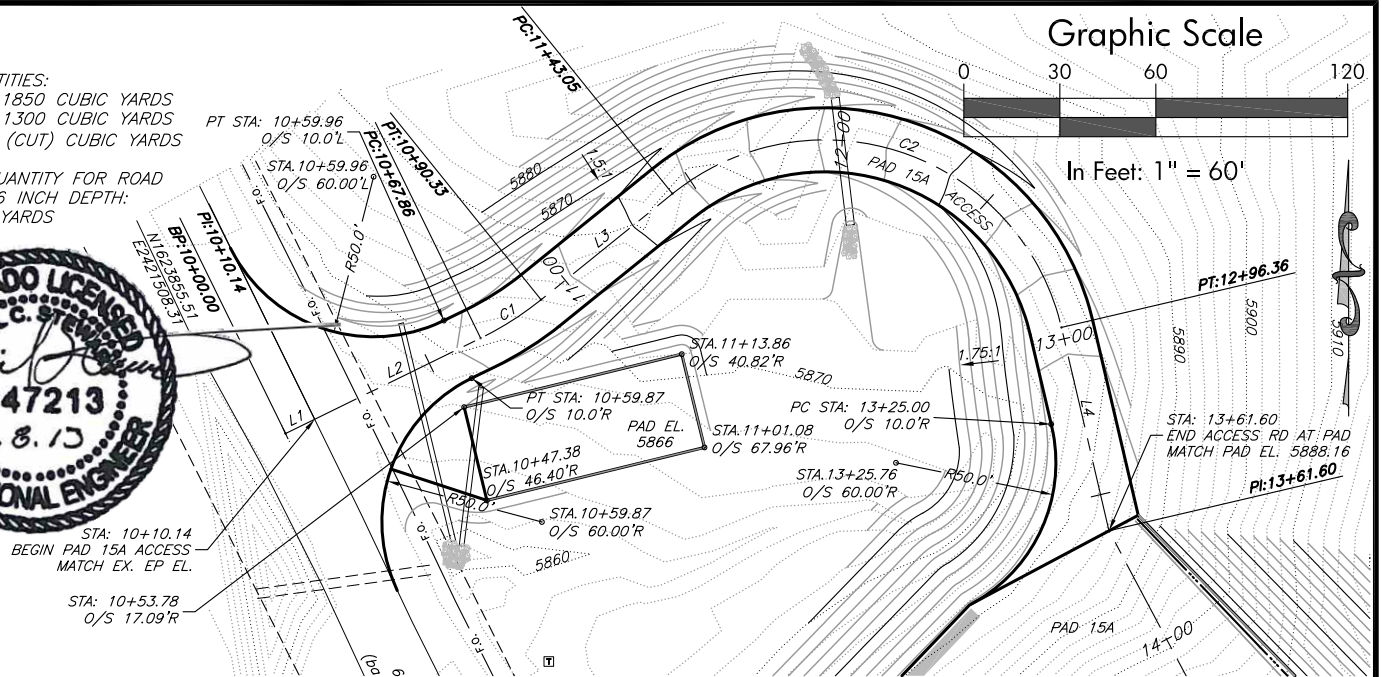
TOP SOIL QUANTITY FOR ROAD
BASED ON 6 INCH DEPTH:
300 CUBIC YARDS



Graphic Scale



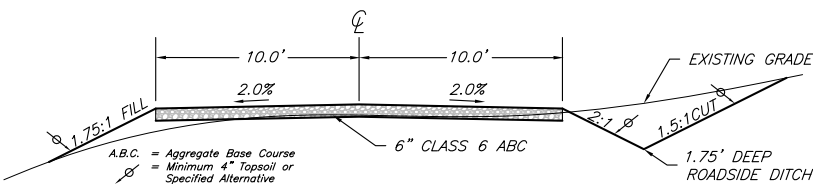
In Feet: 1" = 60'



5865.0	FG	5865.0	EG	5865.20	FG	5866.3	EG	5866.60	FG	5870.3	EG	5871.7	EG	5876.4	EG	5878.8	EG	5879.2	EG	5871.18	FG	5880.0	EG	5873.02	FG	5880.7	EG	5874.86	FG	5876.7	EG	5876.70	FG	5875.7	EG	5878.54	FG	5876.8	EG	5880.38	FG	5878.1	EG	5882.23	FG	5877.8	EG	5884.06	FG	5877.1	EG	5885.67	FG	5877.0	EG	5886.87	FG	5880.2	EG	5887.67	FG	5884.0	EG	5888.12	FG	5890.8	EG	5898.6	EG	5907.8	EG	5907.1	EG	5855	FG
--------	----	--------	----	---------	----	--------	----	---------	----	--------	----	--------	----	--------	----	--------	----	--------	----	---------	----	--------	----	---------	----	--------	----	---------	----	--------	----	---------	----	--------	----	---------	----	--------	----	---------	----	--------	----	---------	----	--------	----	---------	----	--------	----	---------	----	--------	----	---------	----	--------	----	---------	----	--------	----	---------	----	--------	----	--------	----	--------	----	--------	----	------	----

LINE TABLE		
LINE	BEARING	LENGTH
L1	N63°52'09"E	10.14'
L2	N63°58'22"E	57.72'
L3	N51°06'03"E	52.72'
L4	S13°09'52"E	65.24'
L5	S27°59'14"E	407.52'

CURVE TABLE						
CURVE	RADIUS	LENGTH	TANGENT	CHORD	BEARING	DELTA
C1	100.00'	22.47'	11.28'	22.42'	N57°32'12"E	12° 52' 19"
C2	75.90'	153.31'	120.84'	128.54'	S71°01'54"E	115° 44' 05"



TYPICAL ROAD SECTION



SGM INC.

118 W. 6th Street, Suite 200
Glenwood Springs, Colorado 81601
(970) 945-1004 (FAX 945-5948)
Aspen, Colorado (970) 925-6727

Scale: 1" = 60'

Sheet 2D of 7

Pad 15A

Dejour Pad 15A Access Road Design

Sections 15&16, T.6 S, R. 91 W., 6th P.M., Garfield County, CO

Job# 2010-112.001 Date: 7.16.13 By: DCS File: Pad 15 2013