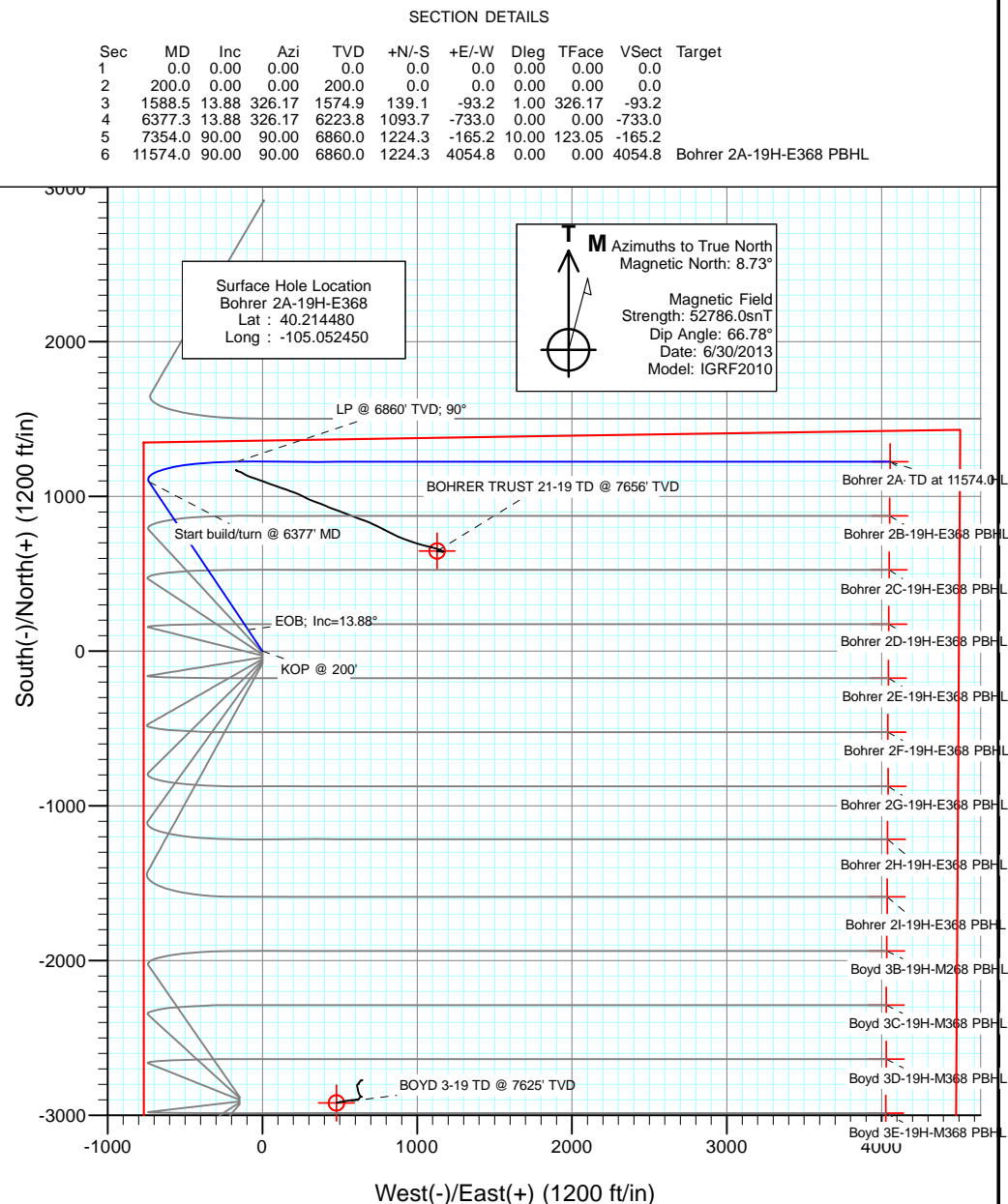
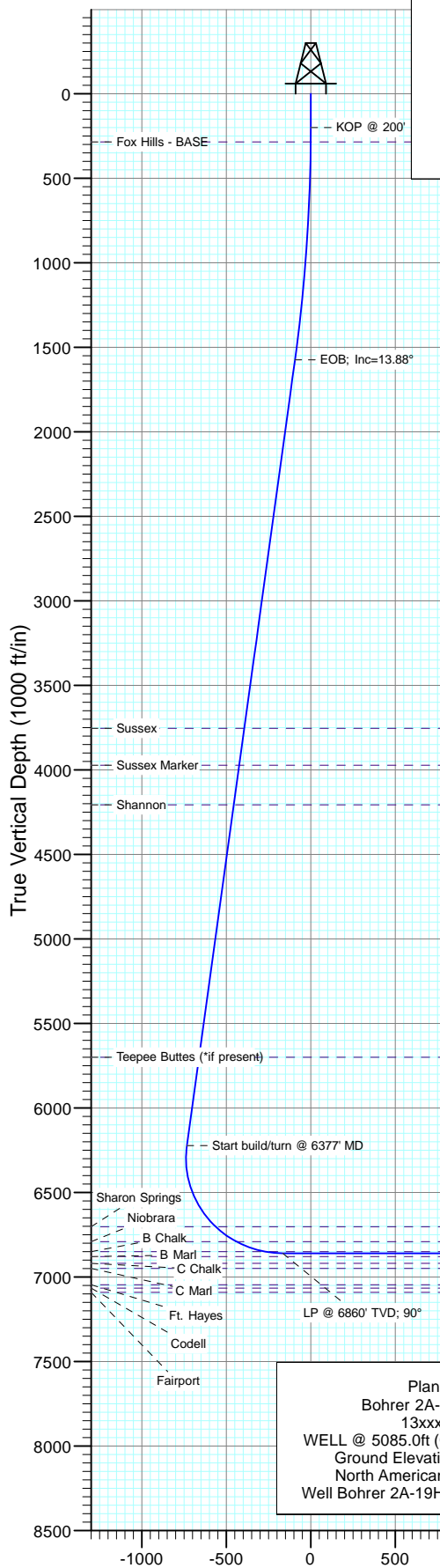




Project: DJ Wattenberg
Site: S19-T3N-R68W (Bohrer)
Well: Bohrer 2A-19H-E368
Wellbore: Hz
Design: Plan #1



DESIGN TARGET DETAILS					
Name	+N/-S	+E/-W	Northing	Easting	Latitude
Bohrer 2A-19H-E368 PBHL	1224.3	4054.8	1322540.12	3129042.74	40.217840

FORMATION TOP DETAILS		
TVDPath	MDPath	Formation
285.0	285.0	Fox Hills - BASE
3754.0	3833.1	Sussex
3973.0	4058.7	Sussex Marker
4207.0	4299.8	Shannon
5700.0	5837.7	Teepee Buttes (*if present)
6703.0	6914.8	Sharon Springs
6791.0	7066.9	Niobrara
6850.0	7245.7	B Chalk

Cathedral Energy Services

Planning Report

Database:	USA EDM 5000 Multi Users DB	Local Co-ordinate Reference:	Well Bohrer 2A-19H-E368
Company:	EnCana Oil & Gas (USA) Inc	TVD Reference:	WELL @ 5085.0ft (Original Well Elev)
Project:	DJ Wattenberg	MD Reference:	WELL @ 5085.0ft (Original Well Elev)
Site:	S19-T3N-R68W (Bohrer)	North Reference:	True
Well:	Bohrer 2A-19H-E368	Survey Calculation Method:	Minimum Curvature
Wellbore:	Hz		
Design:	Plan #1		

Project	DJ Wattenberg		
Map System:	US State Plane 1983	System Datum:	Mean Sea Level
Geo Datum:	North American Datum 1983		
Map Zone:	Colorado Northern Zone		

Site		S19-T3N-R68W (Bohrer)			
Site Position:		Northing:	1,318,413.14 ft	Latitude:	40.206570
From:	Lat/Long	Easting:	3,124,860.64 ft	Longitude:	-105.052980
Position Uncertainty:	0.0 ft	Slot Radius:	13.200 in	Grid Convergence:	0.29 °

Well	Bohrer 2A-19H-E368					
Well Position	+N/-S	0.0 ft	Northing:	1,321,295.33 ft	Latitude:	40.214480
	+E/-W	0.0 ft	Easting:	3,124,994.13 ft	Longitude:	-105.052450
Position Uncertainty		0.0 ft	Wellhead Elevation:	ft	Ground Level:	5,060.0 ft

Wellbore	Hz				
Magnetics	Model Name	Sample Date	Declination (°)	Dip Angle (°)	Field Strength (nT)
	IGRF2010	6/30/2013	8.73	66.78	52,786

Design	Plan #1			
Audit Notes:				
Version:	Phase:	PLAN	Tie On Depth:	0.0
Vertical Section:	Depth From (TVD) (ft)	+N/-S (ft)	+E/-W (ft)	Direction (°)
	0.0	0.0	0.0	90.00

Plan Sections										
Measured Depth (ft)	Inclination (°)	Azimuth (°)	Vertical Depth (ft)	+N/-S (ft)	+E/-W (ft)	Dogleg Rate (°/100ft)	Build Rate (°/100ft)	Turn Rate (°/100ft)	TFO (°)	Target
0.0	0.00	0.00	0.0	0.0	0.0	0.00	0.00	0.00	0.00	
200.0	0.00	0.00	200.0	0.0	0.0	0.00	0.00	0.00	0.00	
1,588.5	13.88	326.17	1,574.9	139.1	-93.2	1.00	1.00	0.00	326.17	
6,377.3	13.88	326.17	6,223.8	1,093.7	-733.0	0.00	0.00	0.00	0.00	
7,354.0	90.00	90.00	6,860.0	1,224.3	-165.2	10.00	7.79	12.68	123.05	
11,574.0	90.00	90.00	6,860.0	1,224.3	4,054.8	0.00	0.00	0.00	0.00	Bohrer 2A-19H-E368

Cathedral Energy Services

Planning Report

Database:	USA EDM 5000 Multi Users DB	Local Co-ordinate Reference:	Well Bohrer 2A-19H-E368
Company:	EnCana Oil & Gas (USA) Inc	TVD Reference:	WELL @ 5085.0ft (Original Well Elev)
Project:	DJ Wattenberg	MD Reference:	WELL @ 5085.0ft (Original Well Elev)
Site:	S19-T3N-R68W (Bohrer)	North Reference:	True
Well:	Bohrer 2A-19H-E368	Survey Calculation Method:	Minimum Curvature
Wellbore:	Hz		
Design:	Plan #1		

Planned Survey

Measured Depth (ft)	Inclination (°)	Azimuth (°)	Vertical Depth (ft)	+N/-S (ft)	+E/-W (ft)	Vertical Section (ft)	Dogleg Rate (°/100ft)	Build Rate (°/100ft)	Comments / Formations
0.0	0.00	0.00	0.0	0.0	0.0	0.0	0.00	0.00	
100.0	0.00	0.00	100.0	0.0	0.0	0.0	0.00	0.00	
200.0	0.00	0.00	200.0	0.0	0.0	0.0	0.00	0.00	KOP @ 200'
285.0	0.85	326.17	285.0	0.5	-0.4	-0.4	1.00	1.00	Fox Hills - BASE
300.0	1.00	326.17	300.0	0.7	-0.5	-0.5	1.00	1.00	
400.0	2.00	326.17	400.0	2.9	-1.9	-1.9	1.00	1.00	
500.0	3.00	326.17	499.9	6.5	-4.4	-4.4	1.00	1.00	
600.0	4.00	326.17	599.7	11.6	-7.8	-7.8	1.00	1.00	
700.0	5.00	326.17	699.4	18.1	-12.1	-12.1	1.00	1.00	
800.0	6.00	326.17	798.9	26.1	-17.5	-17.5	1.00	1.00	
900.0	7.00	326.17	898.3	35.5	-23.8	-23.8	1.00	1.00	
1,000.0	8.00	326.17	997.4	46.3	-31.0	-31.0	1.00	1.00	
1,100.0	9.00	326.17	1,096.3	58.6	-39.3	-39.3	1.00	1.00	
1,200.0	10.00	326.17	1,194.9	72.3	-48.5	-48.5	1.00	1.00	
1,300.0	11.00	326.17	1,293.3	87.4	-58.6	-58.6	1.00	1.00	
1,400.0	12.00	326.17	1,391.2	104.0	-69.7	-69.7	1.00	1.00	
1,500.0	13.00	326.17	1,488.9	122.0	-81.8	-81.8	1.00	1.00	
1,588.5	13.88	326.17	1,574.9	139.1	-93.2	-93.2	1.00	1.00	EOB; Inc=13.88°
1,600.0	13.88	326.17	1,586.1	141.4	-94.7	-94.7	0.00	0.00	
1,700.0	13.88	326.17	1,683.2	161.3	-108.1	-108.1	0.00	0.00	
1,800.0	13.88	326.17	1,780.3	181.2	-121.5	-121.5	0.00	0.00	
1,900.0	13.88	326.17	1,877.3	201.2	-134.8	-134.8	0.00	0.00	
2,000.0	13.88	326.17	1,974.4	221.1	-148.2	-148.2	0.00	0.00	
2,100.0	13.88	326.17	2,071.5	241.0	-161.5	-161.5	0.00	0.00	
2,200.0	13.88	326.17	2,168.6	261.0	-174.9	-174.9	0.00	0.00	
2,300.0	13.88	326.17	2,265.7	280.9	-188.3	-188.3	0.00	0.00	
2,400.0	13.88	326.17	2,362.7	300.8	-201.6	-201.6	0.00	0.00	
2,500.0	13.88	326.17	2,459.8	320.8	-215.0	-215.0	0.00	0.00	
2,600.0	13.88	326.17	2,556.9	340.7	-228.3	-228.3	0.00	0.00	
2,700.0	13.88	326.17	2,654.0	360.7	-241.7	-241.7	0.00	0.00	
2,800.0	13.88	326.17	2,751.0	380.6	-255.1	-255.1	0.00	0.00	
2,900.0	13.88	326.17	2,848.1	400.5	-268.4	-268.4	0.00	0.00	
3,000.0	13.88	326.17	2,945.2	420.5	-281.8	-281.8	0.00	0.00	
3,100.0	13.88	326.17	3,042.3	440.4	-295.1	-295.1	0.00	0.00	
3,200.0	13.88	326.17	3,139.4	460.3	-308.5	-308.5	0.00	0.00	
3,300.0	13.88	326.17	3,236.4	480.3	-321.9	-321.9	0.00	0.00	
3,400.0	13.88	326.17	3,333.5	500.2	-335.2	-335.2	0.00	0.00	
3,500.0	13.88	326.17	3,430.6	520.1	-348.6	-348.6	0.00	0.00	
3,600.0	13.88	326.17	3,527.7	540.1	-361.9	-361.9	0.00	0.00	
3,700.0	13.88	326.17	3,624.8	560.0	-375.3	-375.3	0.00	0.00	
3,800.0	13.88	326.17	3,721.8	579.9	-388.7	-388.7	0.00	0.00	
3,833.1	13.88	326.17	3,754.0	586.5	-393.1	-393.1	0.00	0.00	Sussex
3,900.0	13.88	326.17	3,818.9	599.9	-402.0	-402.0	0.00	0.00	
4,000.0	13.88	326.17	3,916.0	619.8	-415.4	-415.4	0.00	0.00	
4,058.7	13.88	326.17	3,973.0	631.5	-423.2	-423.2	0.00	0.00	Sussex Marker
4,100.0	13.88	326.17	4,013.1	639.7	-428.7	-428.7	0.00	0.00	
4,200.0	13.88	326.17	4,110.1	659.7	-442.1	-442.1	0.00	0.00	
4,299.8	13.88	326.17	4,207.0	679.6	-455.4	-455.4	0.00	0.00	Shannon
4,300.0	13.88	326.17	4,207.2	679.6	-455.5	-455.5	0.00	0.00	
4,400.0	13.88	326.17	4,304.3	699.5	-468.8	-468.8	0.00	0.00	
4,500.0	13.88	326.17	4,401.4	719.5	-482.2	-482.2	0.00	0.00	
4,600.0	13.88	326.17	4,498.5	739.4	-495.5	-495.5	0.00	0.00	

Cathedral Energy Services

Planning Report

Database:	USA EDM 5000 Multi Users DB	Local Co-ordinate Reference:	Well Bohrer 2A-19H-E368
Company:	EnCana Oil & Gas (USA) Inc	TVD Reference:	WELL @ 5085.0ft (Original Well Elev)
Project:	DJ Wattenberg	MD Reference:	WELL @ 5085.0ft (Original Well Elev)
Site:	S19-T3N-R68W (Bohrer)	North Reference:	True
Well:	Bohrer 2A-19H-E368	Survey Calculation Method:	Minimum Curvature
Wellbore:	Hz		
Design:	Plan #1		

Planned Survey									
Measured Depth (ft)	Inclination (°)	Azimuth (°)	Vertical Depth (ft)	+N/-S (ft)	+E/-W (ft)	Vertical Section (ft)	Dogleg Rate (°/100ft)	Build Rate (°/100ft)	Comments / Formations
4,700.0	13.88	326.17	4,595.5	759.3	-508.9	-508.9	0.00	0.00	
4,800.0	13.88	326.17	4,692.6	779.3	-522.3	-522.3	0.00	0.00	
4,900.0	13.88	326.17	4,789.7	799.2	-535.6	-535.6	0.00	0.00	
5,000.0	13.88	326.17	4,886.8	819.1	-549.0	-549.0	0.00	0.00	
5,100.0	13.88	326.17	4,983.8	839.1	-562.3	-562.3	0.00	0.00	
5,200.0	13.88	326.17	5,080.9	859.0	-575.7	-575.7	0.00	0.00	
5,300.0	13.88	326.17	5,178.0	878.9	-589.1	-589.1	0.00	0.00	
5,400.0	13.88	326.17	5,275.1	898.9	-602.4	-602.4	0.00	0.00	
5,500.0	13.88	326.17	5,372.2	918.8	-615.8	-615.8	0.00	0.00	
5,600.0	13.88	326.17	5,469.2	938.8	-629.1	-629.1	0.00	0.00	
5,700.0	13.88	326.17	5,566.3	958.7	-642.5	-642.5	0.00	0.00	
5,800.0	13.88	326.17	5,663.4	978.6	-655.9	-655.9	0.00	0.00	
5,837.7	13.88	326.17	5,700.0	986.1	-660.9	-660.9	0.00	0.00	Teepee Buttes (*if present)
5,900.0	13.88	326.17	5,760.5	998.6	-669.2	-669.2	0.00	0.00	
6,000.0	13.88	326.17	5,857.5	1,018.5	-682.6	-682.6	0.00	0.00	
6,100.0	13.88	326.17	5,954.6	1,038.4	-695.9	-695.9	0.00	0.00	
6,200.0	13.88	326.17	6,051.7	1,058.4	-709.3	-709.3	0.00	0.00	
6,300.0	13.88	326.17	6,148.8	1,078.3	-722.7	-722.7	0.00	0.00	
6,377.3	13.88	326.17	6,223.8	1,093.7	-733.0	-733.0	0.00	0.00	Start build/turn @ 6377' MD
6,400.0	12.78	334.82	6,245.9	1,098.2	-735.6	-735.6	10.00	-4.84	
6,500.0	12.47	21.79	6,343.7	1,118.3	-736.3	-736.3	10.00	-0.31	
6,600.0	18.57	52.32	6,440.2	1,138.1	-719.6	-719.6	10.00	6.10	
6,700.0	27.04	66.28	6,532.4	1,157.1	-686.1	-686.1	10.00	8.47	
6,800.0	36.26	73.74	6,617.4	1,174.5	-636.8	-636.8	10.00	9.22	
6,900.0	45.77	78.47	6,692.8	1,190.0	-573.1	-573.1	10.00	9.51	
6,914.8	47.19	79.04	6,703.0	1,192.1	-562.6	-562.6	10.00	9.61	Sharon Springs
7,000.0	55.43	81.86	6,756.2	1,203.0	-497.1	-497.1	10.00	9.66	
7,066.9	61.93	83.71	6,791.0	1,210.2	-440.4	-440.4	10.00	9.72	Niobrara
7,100.0	65.15	84.54	6,805.7	1,213.2	-410.9	-410.9	10.00	9.74	
7,200.0	74.92	86.83	6,839.8	1,220.2	-317.3	-317.3	10.00	9.77	
7,245.7	79.39	87.80	6,850.0	1,222.3	-272.8	-272.8	10.00	9.78	B Chalk
7,300.0	84.71	88.91	6,857.5	1,223.8	-219.1	-219.1	10.00	9.79	
7,354.0	90.00	90.00	6,860.0	1,224.3	-165.2	-165.2	10.00	9.80	LP @ 6860' TVD; 90°
7,400.0	90.00	90.00	6,860.0	1,224.3	-119.2	-119.2	0.00	0.00	
7,500.0	90.00	90.00	6,860.0	1,224.3	-19.2	-19.2	0.00	0.00	
7,600.0	90.00	90.00	6,860.0	1,224.3	80.8	80.8	0.00	0.00	
7,700.0	90.00	90.00	6,860.0	1,224.3	180.8	180.8	0.00	0.00	
7,800.0	90.00	90.00	6,860.0	1,224.3	280.8	280.8	0.00	0.00	
7,900.0	90.00	90.00	6,860.0	1,224.3	380.8	380.8	0.00	0.00	
8,000.0	90.00	90.00	6,860.0	1,224.3	480.8	480.8	0.00	0.00	
8,100.0	90.00	90.00	6,860.0	1,224.3	580.8	580.8	0.00	0.00	
8,200.0	90.00	90.00	6,860.0	1,224.3	680.8	680.8	0.00	0.00	
8,300.0	90.00	90.00	6,860.0	1,224.3	780.8	780.8	0.00	0.00	
8,400.0	90.00	90.00	6,860.0	1,224.3	880.8	880.8	0.00	0.00	
8,500.0	90.00	90.00	6,860.0	1,224.3	980.8	980.8	0.00	0.00	
8,600.0	90.00	90.00	6,860.0	1,224.3	1,080.8	1,080.8	0.00	0.00	
8,700.0	90.00	90.00	6,860.0	1,224.3	1,180.8	1,180.8	0.00	0.00	
8,800.0	90.00	90.00	6,860.0	1,224.3	1,280.8	1,280.8	0.00	0.00	
8,900.0	90.00	90.00	6,860.0	1,224.3	1,380.8	1,380.8	0.00	0.00	
9,000.0	90.00	90.00	6,860.0	1,224.3	1,480.8	1,480.8	0.00	0.00	
9,100.0	90.00	90.00	6,860.0	1,224.3	1,580.8	1,580.8	0.00	0.00	
9,200.0	90.00	90.00	6,860.0	1,224.3	1,680.8	1,680.8	0.00	0.00	

Cathedral Energy Services

Planning Report

Database:	USA EDM 5000 Multi Users DB	Local Co-ordinate Reference:	Well Bohrer 2A-19H-E368
Company:	EnCana Oil & Gas (USA) Inc	TVD Reference:	WELL @ 5085.0ft (Original Well Elev)
Project:	DJ Wattenberg	MD Reference:	WELL @ 5085.0ft (Original Well Elev)
Site:	S19-T3N-R68W (Bohrer)	North Reference:	True
Well:	Bohrer 2A-19H-E368	Survey Calculation Method:	Minimum Curvature
Wellbore:	Hz		
Design:	Plan #1		

Planned Survey									
Measured Depth (ft)	Inclination (°)	Azimuth (°)	Vertical Depth (ft)	+N/-S (ft)	+E/-W (ft)	Vertical Section (ft)	Dogleg Rate (°/100ft)	Build Rate (°/100ft)	Comments / Formations
9,300.0	90.00	90.00	6,860.0	1,224.3	1,780.8	1,780.8	0.00	0.00	
9,400.0	90.00	90.00	6,860.0	1,224.3	1,880.8	1,880.8	0.00	0.00	
9,500.0	90.00	90.00	6,860.0	1,224.3	1,980.8	1,980.8	0.00	0.00	
9,600.0	90.00	90.00	6,860.0	1,224.3	2,080.8	2,080.8	0.00	0.00	
9,700.0	90.00	90.00	6,860.0	1,224.3	2,180.8	2,180.8	0.00	0.00	
9,800.0	90.00	90.00	6,860.0	1,224.3	2,280.8	2,280.8	0.00	0.00	
9,900.0	90.00	90.00	6,860.0	1,224.3	2,380.8	2,380.8	0.00	0.00	
10,000.0	90.00	90.00	6,860.0	1,224.3	2,480.8	2,480.8	0.00	0.00	
10,100.0	90.00	90.00	6,860.0	1,224.3	2,580.8	2,580.8	0.00	0.00	
10,200.0	90.00	90.00	6,860.0	1,224.3	2,680.8	2,680.8	0.00	0.00	
10,300.0	90.00	90.00	6,860.0	1,224.3	2,780.8	2,780.8	0.00	0.00	
10,400.0	90.00	90.00	6,860.0	1,224.3	2,880.8	2,880.8	0.00	0.00	
10,500.0	90.00	90.00	6,860.0	1,224.3	2,980.8	2,980.8	0.00	0.00	
10,600.0	90.00	90.00	6,860.0	1,224.3	3,080.8	3,080.8	0.00	0.00	
10,700.0	90.00	90.00	6,860.0	1,224.3	3,180.8	3,180.8	0.00	0.00	
10,800.0	90.00	90.00	6,860.0	1,224.3	3,280.8	3,280.8	0.00	0.00	
10,900.0	90.00	90.00	6,860.0	1,224.3	3,380.8	3,380.8	0.00	0.00	
11,000.0	90.00	90.00	6,860.0	1,224.3	3,480.8	3,480.8	0.00	0.00	
11,100.0	90.00	90.00	6,860.0	1,224.3	3,580.8	3,580.8	0.00	0.00	
11,200.0	90.00	90.00	6,860.0	1,224.3	3,680.8	3,680.8	0.00	0.00	
11,300.0	90.00	90.00	6,860.0	1,224.3	3,780.8	3,780.8	0.00	0.00	
11,400.0	90.00	90.00	6,860.0	1,224.3	3,880.8	3,880.8	0.00	0.00	
11,500.0	90.00	90.00	6,860.0	1,224.3	3,980.8	3,980.8	0.00	0.00	
11,574.0	90.00	90.00	6,860.0	1,224.3	4,054.8	4,054.8	0.00	0.00	TD at 11574.0

Targets									
Target Name	Dip Angle (°)	Dip Dir. (°)	TVD (ft)	+N/-S (ft)	+E/-W (ft)	Northing (ft)	Easting (ft)	Latitude	Longitude
- hit/miss target									
- Shape									
Bohrer 2A-19H-E368 PE	0.00	0.00	6,860.0	1,224.3	4,054.8	1,322,540.12	3,129,042.74	40.217840	-105.037930
- plan hits target center									
- Point									

Formations						
Measured Depth (ft)	Vertical Depth (ft)	Name	Lithology	Dip (°)	Dip Direction (°)	
285.0	285.0	Fox Hills - BASE				
3,833.1	3,754.0	Sussex				
4,058.7	3,973.0	Sussex Marker				
4,299.8	4,207.0	Shannon				
5,837.7	5,700.0	Teepee Buttes (*if present)				
6,914.8	6,703.0	Sharon Springs				
7,066.9	6,791.0	Niobrara				
7,245.7	6,850.0	B Chalk				

Cathedral Energy Services

Planning Report

Database:	USA EDM 5000 Multi Users DB	Local Co-ordinate Reference:	Well Bohrer 2A-19H-E368
Company:	EnCana Oil & Gas (USA) Inc	TVD Reference:	WELL @ 5085.0ft (Original Well Elev)
Project:	DJ Wattenberg	MD Reference:	WELL @ 5085.0ft (Original Well Elev)
Site:	S19-T3N-R68W (Bohrer)	North Reference:	True
Well:	Bohrer 2A-19H-E368	Survey Calculation Method:	Minimum Curvature
Wellbore:	Hz		
Design:	Plan #1		

Plan Annotations

Measured Depth (ft)	Vertical Depth (ft)	Local Coordinates		Comment
		+N/-S (ft)	+E/-W (ft)	
200.0	200.0	0.0	0.0	KOP @ 200'
1,588.5	1,574.9	139.1	-93.2	EOB; Inc=13.88°
6,377.3	6,223.8	1,093.7	-733.0	Start build/turn @ 6377' MD
7,354.0	6,860.0	1,224.3	-165.2	LP @ 6860' TVD; 90°
11,574.0	6,860.0	1,224.3	4,054.8	TD at 11574.0

EnCana Oil & Gas (USA) Inc

DJ Wattenberg

S19-T3N-R68W (Bohrer)

Bohrer 2A-19H-E368

Hz

Plan #1

Anticollision Report

30 June, 2013

Cathedral Energy Services

Anticollision Report

Company:	EnCana Oil & Gas (USA) Inc	Local Co-ordinate Reference:	Well Bohrer 2A-19H-E368
Project:	DJ Wattenberg	TVD Reference:	WELL @ 5085.0ft (Original Well Elev)
Reference Site:	S19-T3N-R68W (Bohrer)	MD Reference:	WELL @ 5085.0ft (Original Well Elev)
Site Error:	0.0ft	North Reference:	True
Reference Well:	Bohrer 2A-19H-E368	Survey Calculation Method:	Minimum Curvature
Well Error:	0.0ft	Output errors are at	2.00 sigma
Reference Wellbore	Hz	Database:	USA EDM 5000 Multi Users DB
Reference Design:	Plan #1	Offset TVD Reference:	Offset Datum

Reference	Plan #1		
Filter type:	NO GLOBAL FILTER: Using user defined selection & filtering criteria		
Interpolation Method:	MD Interval 100.0ft	Error Model:	Systematic Ellipse
Depth Range:	Unlimited	Scan Method:	Closest Approach 3D
Results Limited by:	Maximum center-center distance of 500.0ft	Error Surface:	Elliptical Conic
Warning Levels Evaluated at:	2.00 Sigma		

Survey Tool Program		Date	6/30/2013		
From (ft)	To (ft)	Survey (Wellbore)	Tool Name	Description	
0.0	11,574.0	Plan #1 (Hz)	Geolink MWD	Geolink MWD	

Summary						
Site Name	Reference Measured Depth (ft)	Offset Measured Depth (ft)	Distance Between Centres (ft)	Distance Between Ellipses (ft)	Separation Factor	Warning
Offset Well - Wellbore - Design						
S18-T3N-R68W (Billings)						
Billings 3H-18H - Hz - Plan #1	7,167.0	7,362.8	365.8	337.4	12.883	CC
Billings 3H-18H - Hz - Plan #1	11,574.0	11,869.4	447.3	309.2	3.239	ES, SF
S19-T3N-R68W (Bohrer)						
Bohrer 2B-19H-E368 - Hz - Plan #1	200.0	200.0	10.9	10.3	17.897	CC, ES
Bohrer 2B-19H-E368 - Hz - Plan #1	11,574.0	11,728.1	411.1	224.2	2.199	SF
Bohrer 2C-19H-E368 - Hz - Plan #1	200.0	199.0	21.9	21.2	35.883	CC, ES
Bohrer 2C-19H-E368 - Hz - Plan #1	1,400.0	1,402.0	78.2	72.7	14.104	SF
Bohrer 2D-19H-E368 - Hz - Plan #1	200.0	199.0	29.1	28.5	47.844	CC, ES
Bohrer 2D-19H-E368 - Hz - Plan #1	800.0	799.2	54.3	51.5	19.857	SF
Bohrer 2E-19H-E368 - Hz - Plan #1	200.0	199.0	40.1	39.5	65.786	CC, ES
Bohrer 2E-19H-E368 - Hz - Plan #1	800.0	798.1	68.2	65.4	25.058	SF
Bohrer 2F-19H-E368 - Hz - Plan #1	200.0	199.0	51.0	50.4	83.727	CC, ES
Bohrer 2F-19H-E368 - Hz - Plan #1	800.0	796.4	81.6	78.9	29.858	SF
Bohrer 2G-19H-E368 - Hz - Plan #1	200.0	199.0	58.3	57.7	95.688	CC, ES
Bohrer 2G-19H-E368 - Hz - Plan #1	800.0	794.1	94.3	91.5	34.363	SF
Bohrer 2H-19H-E368 - Hz - Plan #1	200.0	198.0	69.2	68.6	113.956	CC, ES
Bohrer 2H-19H-E368 - Hz - Plan #1	800.0	790.0	112.7	109.9	40.976	SF
Bohrer 2I-19H-E368 - Hz - Plan #1	200.0	198.0	80.1	79.5	131.949	CC, ES
Bohrer 2I-19H-E368 - Hz - Plan #1	800.0	786.2	133.0	130.3	48.326	SF
BOHRER TRUST 21-19 (EXISTING) - ENCANA WELL - S						Out of range
BOYD 3-19 (EXISTING) - ENCANA WELL - SURVEYS						Out of range
Boyd 3B-19H-M368 - Hz - Plan #1						Out of range
Boyd 3C-19H-M368 - Hz - Plan #1						Out of range
Boyd 3D-19H-M368 - Hz - Plan #1						Out of range
Boyd 3E-19H-M368 - Hz - Plan #1						Out of range
Boyd 3F-19H-M368 - Hz - Plan #1						Out of range
Boyd 3G-19H-M368 - Hz - Plan #1						Out of range

Cathedral Energy Services

Anticollision Report

Company:	EnCana Oil & Gas (USA) Inc	Local Co-ordinate Reference:	Well Bohrer 2A-19H-E368
Project:	DJ Wattenberg	TVD Reference:	WELL @ 5085.0ft (Original Well Elev)
Reference Site:	S19-T3N-R68W (Bohrer)	MD Reference:	WELL @ 5085.0ft (Original Well Elev)
Site Error:	0.0ft	North Reference:	True
Reference Well:	Bohrer 2A-19H-E368	Survey Calculation Method:	Minimum Curvature
Well Error:	0.0ft	Output errors are at	2.00 sigma
Reference Wellbore	Hz	Database:	USA EDM 5000 Multi Users DB
Reference Design:	Plan #1	Offset TVD Reference:	Offset Datum

Offset Design S18-T3N-R68W (Billings) - Billings 3H-18H - Hz - Plan #1													Offset Site Error:	0.0 ft
Survey Program: O-MWD													Offset Well Error:	0.0 ft
Reference		Offset		Semi Major Axis			Distance				Total		Warning	
Measured Depth (ft)	Vertical Depth (ft)	Measured Depth (ft)	Vertical Depth (ft)	Reference (ft)	Offset (ft)	Highside Toolface (°)	Offset Wellbore Centre +N/-S (ft)	+E/-W (ft)	Between Centres (ft)	Between Ellipses (ft)	Uncertainty Axis	Separation Factor		
6,600.0	6,440.2	6,791.7	6,615.7	26.4	28.6	-56.93	1,625.4	-718.4	497.9	463.7	34.15	14.581		
6,700.0	6,532.4	6,883.7	6,703.7	26.5	28.8	-75.74	1,606.8	-698.9	460.6	426.4	34.19	13.470		
6,800.0	6,617.4	6,978.2	6,790.7	26.4	28.9	-88.49	1,588.6	-667.1	427.1	393.1	34.02	12.553		
6,900.0	6,692.8	7,076.2	6,875.8	26.2	28.9	-98.79	1,570.8	-622.1	399.3	365.9	33.45	11.936		
7,000.0	6,756.2	7,178.8	6,957.5	25.9	28.8	-107.79	1,553.7	-562.7	379.1	346.9	32.22	11.769		
7,100.0	6,805.7	7,286.8	7,033.8	25.7	28.6	-115.82	1,537.9	-487.9	367.9	337.8	30.12	12.215		
7,167.0	6,830.3	7,362.8	7,080.4	25.5	28.5	-120.65	1,528.2	-428.7	365.8	337.4	28.39	12.883 CC		
7,200.0	6,839.8	7,401.5	7,101.7	25.5	28.5	-122.85	1,523.9	-396.8	366.3	338.9	27.42	13.361		
7,300.0	6,857.5	7,523.6	7,157.4	25.3	28.4	-128.65	1,512.5	-288.9	373.7	348.6	25.09	14.895		
7,400.0	6,860.0	7,654.4	7,196.3	25.3	28.3	-133.20	1,504.7	-164.4	387.3	362.6	24.64	15.719		
7,500.0	6,860.0	7,795.3	7,212.7	25.4	28.5	-135.23	1,501.8	-24.8	394.0	368.2	25.73	15.313		
7,600.0	6,860.0	7,896.0	7,214.4	25.8	28.7	-135.41	1,501.8	75.9	395.2	367.8	27.42	14.414		
7,700.0	6,860.0	7,995.9	7,216.2	26.3	29.2	-135.59	1,501.8	175.9	396.5	367.1	29.40	13.484		
7,800.0	6,860.0	8,095.9	7,217.9	27.2	29.8	-135.76	1,501.8	275.8	397.7	366.1	31.62	12.577		
7,900.0	6,860.0	8,195.9	7,219.7	28.3	30.7	-135.94	1,501.8	375.8	399.0	364.9	34.02	11.726		
8,000.0	6,860.0	8,295.9	7,221.4	29.7	31.8	-136.11	1,501.8	475.8	400.2	363.6	36.57	10.944		
8,100.0	6,860.0	8,395.9	7,223.2	31.3	33.1	-136.29	1,501.8	575.8	401.5	362.3	39.22	10.236		
8,200.0	6,860.0	8,495.9	7,224.9	33.0	34.6	-136.46	1,501.8	675.7	402.7	360.8	41.96	9.598		
8,300.0	6,860.0	8,595.8	7,226.7	34.8	36.2	-136.63	1,501.8	775.7	404.0	359.2	44.76	9.026		
8,400.0	6,860.0	8,695.8	7,228.4	36.8	38.0	-136.80	1,501.8	875.7	405.3	357.7	47.61	8.513		
8,500.0	6,860.0	8,795.8	7,230.1	38.8	39.8	-136.96	1,501.8	975.6	406.6	356.1	50.49	8.052		
8,600.0	6,860.0	8,895.8	7,231.9	40.8	41.8	-137.13	1,501.8	1,075.6	407.8	354.4	53.41	7.637		
8,700.0	6,860.0	8,995.8	7,233.6	43.0	43.8	-137.30	1,501.8	1,175.6	409.1	352.8	56.34	7.262		
8,800.0	6,860.0	9,095.8	7,235.4	45.1	45.8	-137.46	1,501.8	1,275.5	410.4	351.1	59.28	6.923		
8,900.0	6,860.0	9,195.8	7,237.1	47.3	47.9	-137.63	1,501.8	1,375.5	411.7	349.5	62.23	6.615		
9,000.0	6,860.0	9,295.7	7,238.9	49.5	50.1	-137.79	1,501.8	1,475.5	413.0	347.8	65.19	6.335		
9,100.0	6,860.0	9,395.7	7,240.6	51.8	52.3	-137.95	1,501.8	1,575.4	414.3	346.1	68.14	6.079		
9,200.0	6,860.0	9,495.7	7,242.4	54.0	54.5	-138.11	1,501.8	1,675.4	415.6	344.5	71.10	5.845		
9,300.0	6,860.0	9,595.7	7,244.1	56.3	56.7	-138.27	1,501.8	1,775.4	416.9	342.8	74.05	5.630		
9,400.0	6,860.0	9,695.7	7,245.8	58.6	59.0	-138.43	1,501.8	1,875.4	418.2	341.2	76.99	5.431		
9,500.0	6,860.0	9,795.7	7,247.6	60.9	61.2	-138.59	1,501.8	1,975.3	419.5	339.5	79.93	5.248		
9,600.0	6,860.0	9,895.6	7,249.3	63.3	63.5	-138.75	1,501.8	2,075.3	420.8	337.9	82.86	5.078		
9,700.0	6,860.0	9,995.6	7,251.1	65.6	65.8	-138.91	1,501.8	2,175.3	422.1	336.3	85.78	4.921		
9,800.0	6,860.0	10,095.6	7,252.8	67.9	68.1	-139.06	1,501.8	2,275.2	423.4	334.7	88.69	4.774		
9,900.0	6,860.0	10,195.6	7,254.6	70.3	70.4	-139.21	1,501.8	2,375.2	424.7	333.2	91.59	4.637		
10,000.0	6,860.0	10,295.6	7,256.3	72.7	72.8	-139.37	1,501.8	2,475.2	426.1	331.6	94.48	4.510		
10,100.0	6,860.0	10,395.6	7,258.1	75.0	75.1	-139.52	1,501.8	2,575.1	427.4	330.0	97.35	4.390		
10,200.0	6,860.0	10,495.6	7,259.8	77.4	77.5	-139.67	1,501.8	2,675.1	428.7	328.5	100.21	4.278		
10,300.0	6,860.0	10,595.5	7,261.6	79.8	79.8	-139.82	1,501.8	2,775.1	430.1	327.0	103.06	4.173		
10,400.0	6,860.0	10,695.5	7,263.3	82.2	82.2	-139.97	1,501.8	2,875.1	431.4	325.5	105.89	4.074		
10,500.0	6,860.0	10,795.5	7,265.0	84.6	84.6	-140.12	1,501.8	2,975.0	432.7	324.0	108.71	3.980		
10,600.0	6,860.0	10,895.5	7,266.8	86.9	86.9	-140.27	1,501.8	3,075.0	434.1	322.5	111.52	3.892		
10,700.0	6,860.0	10,995.5	7,268.5	89.3	89.3	-140.41	1,501.8	3,175.0	435.4	321.1	114.31	3.809		
10,800.0	6,860.0	11,095.5	7,270.3	91.7	91.7	-140.56	1,501.8	3,274.9	436.8	319.7	117.09	3.730		
10,900.0	6,860.0	11,195.4	7,272.0	94.2	94.1	-140.71	1,501.8	3,374.9	438.1	318.3	119.85	3.655		
11,000.0	6,860.0	11,295.4	7,273.8	96.6	96.5	-140.85	1,501.8	3,474.9	439.5	316.9	122.60	3.585		
11,100.0	6,860.0	11,395.4	7,275.5	99.0	98.9	-140.99	1,501.8	3,574.8	440.8	315.5	125.33	3.517		
11,200.0	6,860.0	11,495.4	7,277.3	101.4	101.3	-141.14	1,501.8	3,674.8	442.2	314.1	128.05	3.453		
11,300.0	6,860.0	11,595.4	7,279.0	103.8	103.7	-141.28	1,501.8	3,774.8	443.5	312.8	130.75	3.392		
11,400.0	6,860.0	11,695.4	7,280.7	106.2	106.1	-141.42	1,501.8	3,874.7	444.9	311.5	133.44	3.334		
11,500.0	6,860.0	11,795.4	7,282.5	108.7	108.5	-141.56	1,501.8	3,974.7	446.3	310.2	136.11	3.279		
11,574.0	6,860.0	11,869.4	7,283.8	110.5	110.3	-141.66	1,501.8	4,048.7	447.3	309.2	138.08	3.239 ES, SF		

CC - Min centre to center distance or convergent point, SF - min separation factor, ES - min ellipse separation

Cathedral Energy Services

Anticollision Report

Company:	EnCana Oil & Gas (USA) Inc	Local Co-ordinate Reference:	Well Bohrer 2A-19H-E368
Project:	DJ Wattenberg	TVD Reference:	WELL @ 5085.0ft (Original Well Elev)
Reference Site:	S19-T3N-R68W (Bohrer)	MD Reference:	WELL @ 5085.0ft (Original Well Elev)
Site Error:	0.0ft	North Reference:	True
Reference Well:	Bohrer 2A-19H-E368	Survey Calculation Method:	Minimum Curvature
Well Error:	0.0ft	Output errors are at	2.00 sigma
Reference Wellbore	Hz	Database:	USA EDM 5000 Multi Users DB
Reference Design:	Plan #1	Offset TVD Reference:	Offset Datum

Cathedral Energy Services

Anticollision Report

Company:	EnCana Oil & Gas (USA) Inc	Local Co-ordinate Reference:	Well Bohrer 2A-19H-E368
Project:	DJ Wattenberg	TVD Reference:	WELL @ 5085.0ft (Original Well Elev)
Reference Site:	S19-T3N-R68W (Bohrer)	MD Reference:	WELL @ 5085.0ft (Original Well Elev)
Site Error:	0.0ft	North Reference:	True
Reference Well:	Bohrer 2A-19H-E368	Survey Calculation Method:	Minimum Curvature
Well Error:	0.0ft	Output errors are at	2.00 sigma
Reference Wellbore	Hz	Database:	USA EDM 5000 Multi Users DB
Reference Design:	Plan #1	Offset TVD Reference:	Offset Datum

Offset Design S19-T3N-R68W (Bohrer) - Bohrer 2B-19H-E368 - Hz - Plan #1													Offset Site Error: 0.0 ft	
Survey Program: O-Geolink MWD													Offset Well Error: 0.0 ft	
Reference		Offset		Semi Major Axis			Distance							Warning
Measured Depth	Vertical Depth	Measured Depth	Vertical Depth	Reference	Offset	Highside Toolface	Offset Wellbore Centre		Between Centres	Between Ellipses	Total Uncertainty Axis	Separation Factor		
(ft)	(ft)	(ft)	(ft)	(ft)	(ft)	(°)	+N/-S (ft)	+E/-W (ft)	(ft)	(ft)				
0.0	0.0	0.0	0.0	0.0	0.0	-180.00	-10.9	0.0	10.9					
100.0	100.0	100.0	100.0	0.1	0.1	-180.00	-10.9	0.0	10.9	10.7	0.26	41.760		
200.0	200.0	200.0	200.0	0.3	0.3	-180.00	-10.9	0.0	10.9	10.3	0.61	17.897 CC, ES		
300.0	300.0	300.0	300.0	0.5	0.5	-148.55	-10.9	0.0	11.7	10.7	0.96	12.152		
400.0	400.0	400.1	400.1	0.7	0.7	-152.01	-10.3	-0.6	13.3	11.9	1.31	10.117		
500.0	499.9	500.3	500.3	0.8	0.8	-153.81	-8.4	-2.4	15.0	13.4	1.66	9.031		
600.0	599.7	600.5	600.4	1.0	1.0	-154.42	-5.1	-5.3	16.9	14.9	2.02	8.378		
700.0	699.4	700.8	700.5	1.3	1.2	-154.19	-0.6	-9.5	19.0	16.6	2.38	7.954		
800.0	798.9	801.0	800.4	1.5	1.4	-153.36	5.1	-14.9	21.1	18.4	2.76	7.661		
900.0	898.3	901.3	900.2	1.7	1.7	-152.12	12.2	-21.4	23.5	20.3	3.15	7.446		
1,000.0	997.4	1,001.6	999.9	2.0	1.9	-150.59	20.6	-29.1	25.9	22.4	3.56	7.276		
1,100.0	1,096.3	1,102.0	1,099.4	2.3	2.2	-148.87	30.2	-38.0	28.6	24.6	4.01	7.131		
1,200.0	1,194.9	1,202.3	1,198.6	2.6	2.5	-147.04	41.1	-48.1	31.4	26.9	4.48	6.997		
1,300.0	1,293.3	1,302.7	1,297.6	3.0	2.8	-145.15	53.3	-59.4	34.4	29.4	5.01	6.867		
1,400.0	1,391.2	1,403.1	1,396.3	3.4	3.1	-143.26	66.8	-71.8	37.6	32.0	5.58	6.739		
1,500.0	1,488.9	1,503.0	1,494.3	3.8	3.5	-142.39	80.8	-84.7	41.7	35.5	6.15	6.775		
1,600.0	1,586.1	1,602.8	1,592.4	4.2	3.8	-142.97	94.7	-97.6	47.2	40.5	6.69	7.046		
1,700.0	1,683.2	1,702.6	1,690.4	4.6	4.2	-143.89	108.6	-110.5	53.2	46.0	7.22	7.370		
1,800.0	1,780.3	1,802.4	1,788.4	5.1	4.6	-144.63	122.6	-123.4	59.2	51.5	7.74	7.650		
1,900.0	1,877.3	1,902.3	1,886.4	5.5	4.9	-145.23	136.5	-136.2	65.3	57.0	8.27	7.894		
2,000.0	1,974.4	2,002.1	1,984.4	6.0	5.3	-145.73	150.5	-149.1	71.4	62.6	8.80	8.108		
2,100.0	2,071.5	2,101.9	2,082.3	6.4	5.7	-146.15	164.4	-162.0	77.4	68.1	9.33	8.297		
2,200.0	2,168.6	2,201.7	2,180.3	6.9	6.0	-146.51	178.3	-174.9	83.5	73.6	9.86	8.466		
2,300.0	2,265.7	2,301.5	2,278.3	7.3	6.4	-146.82	192.3	-187.7	89.5	79.2	10.39	8.617		
2,400.0	2,362.7	2,401.3	2,376.3	7.8	6.8	-147.09	206.2	-200.6	95.6	84.7	10.92	8.753		
2,500.0	2,459.8	2,501.1	2,474.3	8.2	7.1	-147.32	220.1	-213.5	101.7	90.2	11.46	8.876		
2,600.0	2,556.9	2,601.0	2,572.3	8.7	7.5	-147.54	234.1	-226.4	107.8	95.8	11.99	8.989		
2,700.0	2,654.0	2,700.8	2,670.3	9.1	7.9	-147.73	248.0	-239.3	113.8	101.3	12.52	9.091		
2,800.0	2,751.0	2,800.6	2,768.3	9.6	8.3	-147.89	262.0	-252.1	119.9	106.9	13.06	9.185		
2,900.0	2,848.1	2,900.4	2,866.3	10.0	8.6	-148.05	275.9	-265.0	126.0	112.4	13.59	9.271		
3,000.0	2,945.2	3,000.2	2,964.3	10.5	9.0	-148.19	289.8	-277.9	132.1	117.9	14.12	9.351		
3,100.0	3,042.3	3,100.0	3,062.3	10.9	9.4	-148.31	303.8	-290.8	138.1	123.5	14.66	9.425		
3,200.0	3,139.4	3,199.9	3,160.3	11.4	9.8	-148.43	317.7	-303.6	144.2	129.0	15.19	9.493		
3,300.0	3,236.4	3,299.7	3,258.3	11.8	10.1	-148.54	331.6	-316.5	150.3	134.6	15.73	9.557		
3,400.0	3,333.5	3,399.5	3,356.3	12.3	10.5	-148.64	345.6	-329.4	156.4	140.1	16.26	9.617		
3,500.0	3,430.6	3,499.3	3,454.3	12.8	10.9	-148.73	359.5	-342.3	162.5	145.7	16.80	9.672		
3,600.0	3,527.7	3,599.1	3,552.3	13.2	11.3	-148.81	373.5	-355.2	168.5	151.2	17.33	9.725		
3,700.0	3,624.8	3,698.9	3,650.3	13.7	11.6	-148.89	387.4	-368.0	174.6	156.8	17.87	9.773		
3,800.0	3,721.8	3,798.7	3,748.2	14.1	12.0	-148.96	401.3	-380.9	180.7	162.3	18.40	9.820		
3,900.0	3,818.9	3,898.6	3,846.2	14.6	12.4	-149.03	415.3	-393.8	186.8	167.9	18.94	9.863		
4,000.0	3,916.0	3,998.4	3,944.2	15.0	12.8	-149.10	429.2	-406.7	192.9	173.4	19.47	9.904		
4,100.0	4,013.1	4,098.2	4,042.2	15.5	13.1	-149.16	443.1	-419.5	199.0	178.9	20.01	9.943		
4,200.0	4,110.1	4,198.0	4,140.2	15.9	13.5	-149.22	457.1	-432.4	205.0	184.5	20.55	9.979		
4,300.0	4,207.2	4,297.8	4,238.2	16.4	13.9	-149.27	471.0	-445.3	211.1	190.0	21.08	10.014		
4,400.0	4,304.3	4,397.6	4,336.2	16.9	14.3	-149.32	485.0	-458.2	217.2	195.6	21.62	10.047		
4,500.0	4,401.4	4,497.4	4,434.2	17.3	14.6	-149.37	498.9	-471.1	223.3	201.1	22.15	10.079		
4,600.0	4,498.5	4,597.3	4,532.2	17.8	15.0	-149.41	512.8	-483.9	229.4	206.7	22.69	10.109		
4,700.0	4,595.5	4,697.1	4,630.2	18.2	15.4	-149.46	526.8	-496.8	235.5	212.2	23.23	10.137		
4,800.0	4,692.6	4,796.9	4,728.2	18.7	15.8	-149.50	540.7	-509.7	241.5	217.8	23.76	10.165		
4,900.0	4,789.7	4,896.7	4,826.2	19.1	16.1	-149.53	554.6	-522.6	247.6	223.3	24.30	10.191		
5,000.0	4,886.8	4,996.5	4,924.2	19.6	16.5	-149.57	568.6	-535.4	253.7	228.9	24.84	10.215		
5,100.0	4,983.8	5,096.3	5,022.2	20.0	16.9	-149.61	582.5	-548.3	259.8	234.4	25.37	10.239		

CC - Min centre to center distance or convergent point, SF - min separation factor, ES - min ellipse separation

Cathedral Energy Services

Anticollision Report

Company:	EnCana Oil & Gas (USA) Inc	Local Co-ordinate Reference:	Well Bohrer 2A-19H-E368
Project:	DJ Wattenberg	TVD Reference:	WELL @ 5085.0ft (Original Well Elev)
Reference Site:	S19-T3N-R68W (Bohrer)	MD Reference:	WELL @ 5085.0ft (Original Well Elev)
Site Error:	0.0ft	North Reference:	True
Reference Well:	Bohrer 2A-19H-E368	Survey Calculation Method:	Minimum Curvature
Well Error:	0.0ft	Output errors are at	2.00 sigma
Reference Wellbore	Hz	Database:	USA EDM 5000 Multi Users DB
Reference Design:	Plan #1	Offset TVD Reference:	Offset Datum

Offset Design S19-T3N-R68W (Bohrer) - Bohrer 2B-19H-E368 - Hz - Plan #1													Offset Site Error:	0.0 ft
Survey Program: O-Geolink MWD													Offset Well Error:	0.0 ft
Reference		Offset		Semi Major Axis			Distance				Total Uncertainty Axis	Separation Factor	Warning	
Measured Depth (ft)	Vertical Depth (ft)	Measured Depth (ft)	Vertical Depth (ft)	Reference (ft)	Offset (ft)	Highside Toolface (°)	Offset Wellbore Centre +N/-S (ft)	+E/-W (ft)	Between Centres (ft)	Between Ellipses (ft)				
5,200.0	5,080.9	5,196.1	5,120.2	20.5	17.3	-149.64	596.5	-561.2	265.9	240.0	25.91	10.262		
5,300.0	5,178.0	5,296.0	5,218.2	21.0	17.6	-149.67	610.4	-574.1	272.0	245.5	26.44	10.284		
5,400.0	5,275.1	5,395.8	5,316.2	21.4	18.0	-149.70	624.3	-587.0	278.0	251.1	26.98	10.305		
5,500.0	5,372.2	5,495.6	5,414.2	21.9	18.4	-149.73	638.3	-599.8	284.1	256.6	27.52	10.325		
5,600.0	5,469.2	5,595.4	5,512.1	22.3	18.8	-149.76	652.2	-612.7	290.2	262.2	28.05	10.344		
5,700.0	5,566.3	5,695.2	5,610.1	22.8	19.1	-149.79	666.1	-625.6	296.3	267.7	28.59	10.363		
5,800.0	5,663.4	5,795.0	5,708.1	23.2	19.5	-149.81	680.1	-638.5	302.4	273.2	29.13	10.381		
5,900.0	5,760.5	5,894.8	5,806.1	23.7	19.9	-149.84	694.0	-651.3	308.5	278.8	29.66	10.398		
6,000.0	5,857.5	5,994.7	5,904.1	24.1	20.3	-149.86	708.0	-664.2	314.5	284.3	30.20	10.415		
6,100.0	5,954.6	6,094.5	6,002.1	24.6	20.6	-149.89	721.9	-677.1	320.6	289.9	30.74	10.431		
6,200.0	6,051.7	6,194.3	6,100.1	25.1	21.0	-149.91	735.8	-690.0	326.7	295.4	31.27	10.447		
6,300.0	6,148.8	6,294.1	6,198.1	25.5	21.4	-149.93	749.8	-702.9	332.8	301.0	31.81	10.462		
6,400.0	6,245.9	6,393.9	6,296.1	26.0	21.8	-158.42	763.7	-715.7	338.9	306.5	32.31	10.486		
6,500.0	6,343.7	6,492.9	6,393.2	26.3	22.1	157.12	777.5	-728.5	344.5	311.1	33.33	10.334		
6,600.0	6,440.2	6,590.0	6,488.9	26.4	22.5	131.25	791.1	-738.5	350.9	316.0	34.91	10.052		
6,700.0	6,532.4	6,691.6	6,589.2	26.5	22.6	122.10	805.4	-733.1	359.3	323.5	35.80	10.037		
6,800.0	6,617.4	6,799.1	6,692.5	26.4	22.6	119.26	820.1	-708.0	369.2	333.5	35.71	10.339		
6,900.0	6,692.8	6,913.1	6,795.0	26.2	22.4	118.89	834.7	-660.6	379.9	345.4	34.58	10.988		
7,000.0	6,756.2	7,034.3	6,891.4	25.9	22.0	119.51	848.4	-588.9	390.5	357.9	32.58	11.987		
7,100.0	6,805.7	7,162.5	6,974.8	25.7	21.5	120.40	860.2	-492.6	399.8	369.6	30.14	13.265		
7,200.0	6,839.8	7,296.8	7,037.1	25.5	21.0	121.20	869.1	-374.3	406.7	378.7	28.03	14.512		
7,300.0	6,857.5	7,435.4	7,071.2	25.3	20.6	121.65	873.9	-240.4	410.5	383.3	27.21	15.089		
7,400.0	6,860.0	7,556.8	7,076.0	25.3	20.5	121.70	874.6	-119.2	411.0	382.9	28.12	14.618		
7,500.0	6,860.0	7,656.8	7,076.0	25.4	20.7	121.70	874.6	-19.2	411.0	381.3	29.75	13.815		
7,600.0	6,860.0	7,756.8	7,076.0	25.8	21.2	121.70	874.6	80.8	411.0	379.2	31.86	12.902		
7,700.0	6,860.0	7,856.8	7,076.0	26.3	22.1	121.70	874.6	180.8	411.0	376.7	34.36	11.964		
7,800.0	6,860.0	7,956.8	7,076.0	27.2	23.5	121.70	874.6	280.8	411.0	373.9	37.16	11.060		
7,900.0	6,860.0	8,056.8	7,076.0	28.3	25.1	121.70	874.6	380.8	411.0	370.8	40.22	10.220		
8,000.0	6,860.0	8,156.8	7,076.0	29.7	26.8	121.70	874.6	480.8	411.0	367.6	43.47	9.456		
8,100.0	6,860.0	8,256.8	7,076.0	31.3	28.7	121.70	874.6	580.8	411.0	364.2	46.87	8.769		
8,200.0	6,860.0	8,356.8	7,076.0	33.0	30.7	121.70	874.6	680.8	411.0	360.6	50.40	8.155		
8,300.0	6,860.0	8,456.8	7,076.0	34.8	32.8	121.70	874.6	780.8	411.0	357.0	54.03	7.608		
8,400.0	6,860.0	8,556.8	7,076.0	36.8	34.9	121.70	874.6	880.8	411.0	353.3	57.73	7.120		
8,500.0	6,860.0	8,656.8	7,076.0	38.8	37.0	121.70	874.6	980.8	411.0	349.5	61.51	6.683		
8,600.0	6,860.0	8,756.8	7,076.0	40.8	39.2	121.70	874.6	1,080.8	411.0	345.7	65.33	6.292		
8,700.0	6,860.0	8,856.8	7,076.0	43.0	41.4	121.70	874.6	1,180.8	411.0	341.8	69.20	5.940		
8,800.0	6,860.0	8,956.8	7,076.0	45.1	43.7	121.70	874.6	1,280.8	411.0	337.9	73.11	5.622		
8,900.0	6,860.0	9,056.8	7,076.0	47.3	46.0	121.70	874.6	1,380.8	411.0	334.0	77.06	5.334		
9,000.0	6,860.0	9,156.8	7,076.0	49.5	48.3	121.70	874.6	1,480.8	411.0	330.0	81.02	5.073		
9,100.0	6,860.0	9,256.8	7,076.0	51.8	50.6	121.70	874.6	1,580.8	411.0	326.0	85.02	4.835		
9,200.0	6,860.0	9,356.8	7,076.0	54.0	52.9	121.70	874.6	1,680.8	411.0	322.0	89.03	4.617		
9,300.0	6,860.0	9,456.8	7,076.0	56.3	55.2	121.70	874.6	1,780.8	411.0	318.0	93.06	4.417		
9,400.0	6,860.0	9,556.8	7,076.0	58.6	57.6	121.70	874.6	1,880.8	411.0	313.9	97.11	4.233		
9,500.0	6,860.0	9,656.8	7,076.0	60.9	59.9	121.70	874.6	1,980.8	411.0	309.9	101.17	4.063		
9,600.0	6,860.0	9,756.8	7,076.0	63.3	62.3	121.70	874.6	2,080.8	411.0	305.8	105.24	3.906		
9,700.0	6,860.0	9,856.8	7,076.0	65.6	64.7	121.70	874.6	2,180.8	411.0	301.7	109.33	3.760		
9,800.0	6,860.0	9,956.8	7,076.0	67.9	67.0	121.70	874.6	2,280.8	411.0	297.6	113.42	3.624		
9,900.0	6,860.0	10,056.8	7,076.0	70.3	69.4	121.70	874.6	2,380.8	411.0	293.5	117.52	3.497		
10,000.0	6,860.0	10,156.8	7,076.0	72.7	71.8	121.70	874.6	2,480.8	411.0	289.4	121.63	3.379		
10,100.0	6,860.0	10,256.8	7,076.0	75.0	74.2	121.70	874.6	2,580.8	411.0	285.3	125.75	3.269		
10,200.0	6,860.0	10,356.8	7,076.0	77.4	76.6	121.70	874.6	2,680.8	411.0	281.2	129.87	3.165		
10,300.0	6,860.0	10,456.8	7,076.0	79.8	79.0	121.70	874.6	2,780.8	411.0	277.0	134.00	3.067		

CC - Min centre to center distance or convergent point, SF - min separation factor, ES - min ellipse separation

Cathedral Energy Services

Anticollision Report

Company:	EnCana Oil & Gas (USA) Inc	Local Co-ordinate Reference:	Well Bohrer 2A-19H-E368
Project:	DJ Wattenberg	TVD Reference:	WELL @ 5085.0ft (Original Well Elev)
Reference Site:	S19-T3N-R68W (Bohrer)	MD Reference:	WELL @ 5085.0ft (Original Well Elev)
Site Error:	0.0ft	North Reference:	True
Reference Well:	Bohrer 2A-19H-E368	Survey Calculation Method:	Minimum Curvature
Well Error:	0.0ft	Output errors are at	2.00 sigma
Reference Wellbore	Hz	Database:	USA EDM 5000 Multi Users DB
Reference Design:	Plan #1	Offset TVD Reference:	Offset Datum

Offset Design												S19-T3N-R68W (Bohrer) - Bohrer 2B-19H-E368 - Hz - Plan #1		Offset Site Error:		0.0 ft
Survey Program:												0-Geolink MWD		Offset Well Error:		0.0 ft
Reference		Offset		Semi Major Axis			Distance							Warning		
Measured Depth	Vertical Depth	Measured Depth	Vertical Depth	Reference	Offset	Highside Toolface	Offset Wellbore Centre	Between Centres	Between Ellipses	Total Uncertainty Axis	Separation Factor					
(ft)	(ft)	(ft)	(ft)	(ft)	(ft)	(°)	+N/-S (ft)	+E/-W (ft)	(ft)	(ft)						
10,400.0	6,860.0	10,556.8	7,076.0	82.2	81.4	121.70	874.6	2,880.8	411.0	272.9	138.14	2.976				
10,500.0	6,860.0	10,656.8	7,076.0	84.6	83.8	121.70	874.6	2,980.8	411.0	268.8	142.28	2.889				
10,600.0	6,860.0	10,756.8	7,076.0	86.9	86.2	121.70	874.6	3,080.8	411.0	264.6	146.42	2.807				
10,700.0	6,860.0	10,856.8	7,076.0	89.3	88.7	121.70	874.6	3,180.8	411.0	260.5	150.57	2.730				
10,800.0	6,860.0	10,956.8	7,076.0	91.7	91.1	121.70	874.6	3,280.8	411.0	256.3	154.72	2.657				
10,900.0	6,860.0	11,056.8	7,076.0	94.2	93.5	121.70	874.6	3,380.8	411.0	252.2	158.87	2.587				
11,000.0	6,860.0	11,156.8	7,076.0	96.6	95.9	121.70	874.6	3,480.8	411.0	248.0	163.03	2.521				
11,100.0	6,860.0	11,256.8	7,076.0	99.0	98.4	121.70	874.6	3,580.8	411.0	243.9	167.19	2.459				
11,200.0	6,860.0	11,356.8	7,076.0	101.4	100.8	121.70	874.6	3,680.8	411.0	239.7	171.35	2.399				
11,300.0	6,860.0	11,456.8	7,076.0	103.8	103.2	121.70	874.6	3,780.8	411.0	235.5	175.52	2.342				
11,400.0	6,860.0	11,556.8	7,076.0	106.2	105.7	121.70	874.6	3,880.8	411.0	231.4	179.69	2.288				
11,500.0	6,860.0	11,656.8	7,076.0	108.7	108.1	121.70	874.6	3,980.8	411.0	227.2	183.86	2.236				
11,552.4	6,860.0	11,709.2	7,076.0	109.9	109.4	121.70	874.6	4,033.2	411.0	225.0	186.04	2.209				
11,574.0	6,860.0	11,728.1	7,076.0	110.5	109.8	121.70	874.6	4,052.1	411.1	224.2	186.89	2.199 SF				

Cathedral Energy Services

Anticollision Report

Company:	EnCana Oil & Gas (USA) Inc	Local Co-ordinate Reference:	Well Bohrer 2A-19H-E368
Project:	DJ Wattenberg	TVD Reference:	WELL @ 5085.0ft (Original Well Elev)
Reference Site:	S19-T3N-R68W (Bohrer)	MD Reference:	WELL @ 5085.0ft (Original Well Elev)
Site Error:	0.0ft	North Reference:	True
Reference Well:	Bohrer 2A-19H-E368	Survey Calculation Method:	Minimum Curvature
Well Error:	0.0ft	Output errors are at	2.00 sigma
Reference Wellbore	Hz	Database:	USA EDM 5000 Multi Users DB
Reference Design:	Plan #1	Offset TVD Reference:	Offset Datum

Offset Design S19-T3N-R68W (Bohrer) - Bohrer 2C-19H-E368 - Hz - Plan #1													Offset Site Error:	0.0 ft
Survey Program: O-Geolink MWD													Offset Well Error:	0.0 ft
Reference		Offset		Semi Major Axis		Highside Toolface (°)	Distance		Total Uncertainty Axis	Separation Factor	Warning			
Measured Depth (ft)	Vertical Depth (ft)	Measured Depth (ft)	Vertical Depth (ft)	Reference (ft)	Offset (ft)		Offset Wellbore Centre +N/-S (ft)	+E/-W (ft)						
0.0	0.0	0.0	0.0	0.0	0.0	-180.00	-21.9	0.0	21.9					
100.0	100.0	99.0	99.0	0.1	0.1	-180.00	-21.9	0.0	21.9	21.6	0.26	83.907		
200.0	200.0	199.0	199.0	0.3	0.3	-180.00	-21.9	0.0	21.9	21.2	0.61	35.883 CC, ES		
300.0	300.0	299.0	299.0	0.5	0.5	-147.40	-21.9	0.0	22.6	21.6	0.96	23.568		
400.0	400.0	399.0	399.0	0.7	0.7	-150.64	-21.9	0.0	24.8	23.5	1.31	18.979		
500.0	499.9	499.2	499.2	0.8	0.8	-153.62	-21.4	-0.7	28.1	26.5	1.66	16.955		
600.0	599.7	599.5	599.4	1.0	1.0	-154.94	-19.9	-2.9	31.9	29.9	2.01	15.842		
700.0	699.4	699.8	699.6	1.3	1.2	-155.08	-17.5	-6.5	36.1	33.7	2.38	15.195		
800.0	798.9	800.1	799.8	1.5	1.4	-154.40	-14.2	-11.7	40.7	37.9	2.75	14.810		
900.0	898.3	900.5	899.9	1.7	1.6	-153.16	-9.8	-18.2	45.7	42.6	3.14	14.576		
1,000.0	997.4	1,000.9	999.8	2.0	1.8	-151.56	-4.5	-26.3	51.2	47.6	3.55	14.427		
1,100.0	1,096.3	1,101.3	1,099.5	2.3	2.1	-149.73	1.8	-35.8	57.1	53.1	3.99	14.321		
1,200.0	1,194.9	1,201.7	1,199.0	2.6	2.3	-147.78	9.0	-46.7	63.5	59.1	4.47	14.230		
1,300.0	1,293.3	1,302.1	1,298.3	3.0	2.6	-145.79	17.2	-59.1	70.5	65.5	4.99	14.138		
1,400.0	1,391.2	1,402.0	1,396.9	3.4	2.9	-144.01	26.1	-72.7	78.2	72.7	5.55	14.104 SF		
1,500.0	1,488.9	1,501.6	1,495.2	3.8	3.2	-143.16	35.1	-86.2	87.3	81.2	6.11	14.284		
1,600.0	1,586.1	1,601.0	1,593.3	4.2	3.5	-143.09	44.1	-99.8	97.8	91.1	6.68	14.646		
1,700.0	1,683.2	1,700.4	1,691.4	4.6	3.9	-143.29	53.0	-113.4	108.8	101.6	7.24	15.025		
1,800.0	1,780.3	1,799.8	1,789.4	5.1	4.2	-143.45	62.0	-126.9	119.8	112.0	7.81	15.340		
1,900.0	1,877.3	1,899.2	1,887.5	5.5	4.5	-143.59	70.9	-140.5	130.9	122.5	8.38	15.606		
2,000.0	1,974.4	1,998.6	1,985.5	6.0	4.8	-143.70	79.9	-154.0	141.9	132.9	8.96	15.834		
2,100.0	2,071.5	2,098.0	2,083.6	6.4	5.2	-143.80	88.8	-167.6	152.9	143.4	9.54	16.030		
2,200.0	2,168.6	2,197.4	2,181.6	6.9	5.5	-143.89	97.8	-181.1	163.9	153.8	10.12	16.201		
2,300.0	2,265.7	2,296.8	2,279.7	7.3	5.8	-143.96	106.7	-194.7	175.0	164.3	10.70	16.351		
2,400.0	2,362.7	2,396.1	2,377.7	7.8	6.1	-144.03	115.7	-208.2	186.0	174.7	11.28	16.483		
2,500.0	2,459.8	2,495.5	2,475.8	8.2	6.5	-144.08	124.6	-221.8	197.0	185.1	11.87	16.601		
2,600.0	2,556.9	2,594.9	2,573.8	8.7	6.8	-144.14	133.6	-235.3	208.0	195.6	12.45	16.707		
2,700.0	2,654.0	2,694.3	2,671.9	9.1	7.1	-144.18	142.5	-248.9	219.1	206.0	13.04	16.802		
2,800.0	2,751.0	2,793.7	2,769.9	9.6	7.5	-144.22	151.5	-262.5	230.1	216.5	13.62	16.888		
2,900.0	2,848.1	2,893.1	2,868.0	10.0	7.8	-144.26	160.4	-276.0	241.1	226.9	14.21	16.967		
3,000.0	2,945.2	2,992.5	2,966.1	10.5	8.1	-144.30	169.4	-289.6	252.1	237.3	14.80	17.038		
3,100.0	3,042.3	3,091.9	3,064.1	10.9	8.4	-144.33	178.3	-303.1	263.2	247.8	15.39	17.104		
3,200.0	3,139.4	3,191.3	3,162.2	11.4	8.8	-144.36	187.3	-316.7	274.2	258.2	15.97	17.164		
3,300.0	3,236.4	3,290.7	3,260.2	11.8	9.1	-144.39	196.2	-330.2	285.2	268.6	16.56	17.219		
3,400.0	3,333.5	3,390.0	3,358.3	12.3	9.4	-144.41	205.2	-343.8	296.2	279.1	17.15	17.271		
3,500.0	3,430.6	3,489.4	3,456.3	12.8	9.8	-144.44	214.2	-357.3	307.3	289.5	17.74	17.318		
3,600.0	3,527.7	3,588.8	3,554.4	13.2	10.1	-144.46	223.1	-370.9	318.3	300.0	18.33	17.362		
3,700.0	3,624.8	3,688.2	3,652.4	13.7	10.4	-144.48	232.1	-384.5	329.3	310.4	18.92	17.404		
3,800.0	3,721.8	3,787.6	3,750.5	14.1	10.8	-144.50	241.0	-398.0	340.3	320.8	19.51	17.442		
3,900.0	3,818.9	3,887.0	3,848.5	14.6	11.1	-144.51	250.0	-411.6	351.4	331.3	20.10	17.478		
4,000.0	3,916.0	3,986.4	3,946.6	15.0	11.4	-144.53	258.9	-425.1	362.4	341.7	20.69	17.512		
4,100.0	4,013.1	4,085.8	4,044.6	15.5	11.8	-144.55	267.9	-438.7	373.4	352.1	21.28	17.544		
4,200.0	4,110.1	4,185.2	4,142.7	15.9	12.1	-144.56	276.8	-452.2	384.5	362.6	21.88	17.574		
4,300.0	4,207.2	4,284.6	4,240.7	16.4	12.4	-144.58	285.8	-465.8	395.5	373.0	22.47	17.603		
4,400.0	4,304.3	4,383.9	4,338.8	16.9	12.8	-144.59	294.7	-479.3	406.5	383.4	23.06	17.629		
4,500.0	4,401.4	4,483.3	4,436.9	17.3	13.1	-144.60	303.7	-492.9	417.5	393.9	23.65	17.655		
4,600.0	4,498.5	4,582.7	4,534.9	17.8	13.4	-144.61	312.6	-506.4	428.6	404.3	24.24	17.679		
4,700.0	4,595.5	4,682.1	4,633.0	18.2	13.8	-144.63	321.6	-520.0	439.6	414.8	24.83	17.701		
4,800.0	4,692.6	4,781.5	4,731.0	18.7	14.1	-144.64	330.5	-533.6	450.6	425.2	25.43	17.723		
4,900.0	4,789.7	4,880.9	4,829.1	19.1	14.4	-144.65	339.5	-547.1	461.6	435.6	26.02	17.744		
5,000.0	4,886.8	4,980.3	4,927.1	19.6	14.8	-144.66	348.4	-560.7	472.7	446.1	26.61	17.763		
5,100.0	4,983.8	5,079.7	5,025.2	20.0	15.1	-144.67	357.4	-574.2	483.7	456.5	27.20	17.782		

CC - Min centre to center distance or convergent point, SF - min separation factor, ES - min ellipse separation

Cathedral Energy Services

Anticollision Report

Company:	EnCana Oil & Gas (USA) Inc	Local Co-ordinate Reference:	Well Bohrer 2A-19H-E368
Project:	DJ Wattenberg	TVD Reference:	WELL @ 5085.0ft (Original Well Elev)
Reference Site:	S19-T3N-R68W (Bohrer)	MD Reference:	WELL @ 5085.0ft (Original Well Elev)
Site Error:	0.0ft	North Reference:	True
Reference Well:	Bohrer 2A-19H-E368	Survey Calculation Method:	Minimum Curvature
Well Error:	0.0ft	Output errors are at	2.00 sigma
Reference Wellbore	Hz	Database:	USA EDM 5000 Multi Users DB
Reference Design:	Plan #1	Offset TVD Reference:	Offset Datum

Offset Design S19-T3N-R68W (Bohrer) - Bohrer 2C-19H-E368 - Hz - Plan #1													Offset Site Error:	0.0 ft
Survey Program: 0-Geolink MWD													Offset Well Error:	0.0 ft
Reference		Offset		Semi Major Axis			Distance						Warning	
Measured Depth (ft)	Vertical Depth (ft)	Measured Depth (ft)	Vertical Depth (ft)	Reference (ft)	Offset (ft)	Highside Toolface (°)	Offset Wellbore Centre +N/-S (ft)	+E/-W (ft)	Between Centres (ft)	Between Ellipses (ft)	Total Uncertainty Axis	Separation Factor		
5,200.0	5,080.9	5,179.1	5,123.2	20.5	15.4	-144.67	366.3	-587.8	494.7	466.9	27.79	17.800		

Cathedral Energy Services

Anticollision Report

Company:	EnCana Oil & Gas (USA) Inc	Local Co-ordinate Reference:	Well Bohrer 2A-19H-E368
Project:	DJ Wattenberg	TVD Reference:	WELL @ 5085.0ft (Original Well Elev)
Reference Site:	S19-T3N-R68W (Bohrer)	MD Reference:	WELL @ 5085.0ft (Original Well Elev)
Site Error:	0.0ft	North Reference:	True
Reference Well:	Bohrer 2A-19H-E368	Survey Calculation Method:	Minimum Curvature
Well Error:	0.0ft	Output errors are at	2.00 sigma
Reference Wellbore	Hz	Database:	USA EDM 5000 Multi Users DB
Reference Design:	Plan #1	Offset TVD Reference:	Offset Datum

Offset Design S19-T3N-R68W (Bohrer) - Bohrer 2D-19H-E368 - Hz - Plan #1													Offset Site Error:	0.0 ft
Survey Program: 0-Geolink MWD													Offset Well Error:	0.0 ft
Reference		Offset		Semi Major Axis		Highside Toolface (°)	Distance		Total Uncertainty Axis	Separation Factor	Warning			
Measured Depth (ft)	Vertical Depth (ft)	Measured Depth (ft)	Vertical Depth (ft)	Reference (ft)	Offset (ft)		Offset Wellbore Centre +N/-S (ft)	+E/-W (ft)						
0.0	0.0	0.0	0.0	0.0	0.0	-180.00	-29.1	0.0	29.2					
100.0	100.0	99.0	99.0	0.1	0.1	-180.00	-29.1	0.0	29.1	28.9	0.26	111.876		
200.0	200.0	199.0	199.0	0.3	0.3	-180.00	-29.1	0.0	29.1	28.5	0.61	47.844 CC, ES		
300.0	300.0	299.0	299.0	0.5	0.5	-147.10	-29.1	0.0	29.9	28.9	0.96	31.168		
400.0	400.0	399.0	399.0	0.7	0.7	-149.63	-29.1	0.0	32.1	30.8	1.31	24.533		
500.0	499.9	498.9	498.9	0.8	0.8	-153.13	-29.1	0.0	35.9	34.3	1.66	21.655		
600.0	599.7	599.0	599.0	1.0	1.0	-155.85	-28.9	-0.8	41.1	39.1	2.01	20.443		
700.0	699.4	699.1	699.1	1.3	1.2	-156.83	-28.3	-3.4	47.2	44.9	2.37	19.955		
800.0	798.9	799.2	799.1	1.5	1.4	-156.62	-27.3	-7.6	54.3	51.5	2.73	19.857 SF		
900.0	898.3	899.3	899.0	1.7	1.6	-155.61	-25.8	-13.5	62.1	59.0	3.11	19.978		
1,000.0	997.4	999.4	998.7	2.0	1.8	-154.12	-23.9	-21.1	71.0	67.4	3.51	20.219		
1,100.0	1,096.3	1,099.3	1,098.2	2.3	2.0	-152.35	-21.6	-30.4	80.7	76.8	3.94	20.516		
1,200.0	1,194.9	1,199.2	1,197.5	2.6	2.2	-150.44	-18.9	-41.4	91.5	87.1	4.40	20.823		
1,300.0	1,293.3	1,298.9	1,296.3	3.0	2.5	-148.52	-15.7	-53.9	103.4	98.5	4.89	21.128		
1,400.0	1,391.2	1,398.0	1,394.5	3.4	2.7	-147.17	-12.5	-67.0	116.6	111.2	5.41	21.559		
1,500.0	1,488.9	1,496.9	1,492.4	3.8	3.0	-146.50	-9.3	-80.0	131.3	125.4	5.94	22.126		
1,600.0	1,586.1	1,595.5	1,590.2	4.2	3.3	-146.33	-6.0	-93.0	147.5	141.0	6.47	22.802		
1,700.0	1,683.2	1,694.1	1,687.9	4.6	3.6	-146.39	-2.8	-106.0	164.2	157.2	7.01	23.432		
1,800.0	1,780.3	1,792.7	1,785.6	5.1	3.8	-146.44	0.4	-119.0	180.9	173.4	7.55	23.958		
1,900.0	1,877.3	1,891.3	1,883.2	5.5	4.1	-146.48	3.6	-132.0	197.7	189.6	8.10	24.401		
2,000.0	1,974.4	1,989.9	1,980.9	6.0	4.4	-146.52	6.9	-145.0	214.4	205.7	8.65	24.780		
2,100.0	2,071.5	2,088.5	2,078.6	6.4	4.7	-146.55	10.1	-158.0	231.1	221.9	9.21	25.107		
2,200.0	2,168.6	2,187.1	2,176.3	6.9	5.0	-146.58	13.3	-171.0	247.8	238.1	9.76	25.391		
2,300.0	2,265.7	2,285.7	2,274.0	7.3	5.2	-146.60	16.6	-183.9	264.6	254.2	10.32	25.641		
2,400.0	2,362.7	2,384.3	2,371.6	7.8	5.5	-146.62	19.8	-196.9	281.3	270.4	10.88	25.861		
2,500.0	2,459.8	2,482.9	2,469.3	8.2	5.8	-146.64	23.0	-209.9	298.0	286.6	11.44	26.057		
2,600.0	2,556.9	2,581.5	2,567.0	8.7	6.1	-146.65	26.2	-222.9	314.7	302.7	12.00	26.233		
2,700.0	2,654.0	2,680.1	2,664.7	9.1	6.4	-146.67	29.5	-235.9	331.4	318.9	12.56	26.391		
2,800.0	2,751.0	2,778.6	2,762.4	9.6	6.7	-146.68	32.7	-248.9	348.2	335.0	13.12	26.533		
2,900.0	2,848.1	2,877.2	2,860.0	10.0	7.0	-146.69	35.9	-261.9	364.9	351.2	13.69	26.663		
3,000.0	2,945.2	2,975.8	2,957.7	10.5	7.2	-146.70	39.1	-274.9	381.6	367.4	14.25	26.781		
3,100.0	3,042.3	3,074.4	3,055.4	10.9	7.5	-146.71	42.4	-287.9	398.3	383.5	14.81	26.889		
3,200.0	3,139.4	3,173.0	3,153.1	11.4	7.8	-146.72	45.6	-300.8	415.1	399.7	15.38	26.989		
3,300.0	3,236.4	3,271.6	3,250.8	11.8	8.1	-146.73	48.8	-313.8	431.8	415.8	15.94	27.080		
3,400.0	3,333.5	3,370.2	3,348.4	12.3	8.4	-146.74	52.1	-326.8	448.5	432.0	16.51	27.165		
3,500.0	3,430.6	3,468.8	3,446.1	12.8	8.7	-146.75	55.3	-339.8	465.2	448.1	17.08	27.244		
3,600.0	3,527.7	3,567.4	3,543.8	13.2	9.0	-146.75	58.5	-352.8	481.9	464.3	17.64	27.317		
3,700.0	3,624.8	3,666.0	3,641.5	13.7	9.3	-146.76	61.7	-365.8	498.7	480.5	18.21	27.385		

Cathedral Energy Services

Anticollision Report

Company:	EnCana Oil & Gas (USA) Inc	Local Co-ordinate Reference:	Well Bohrer 2A-19H-E368
Project:	DJ Wattenberg	TVD Reference:	WELL @ 5085.0ft (Original Well Elev)
Reference Site:	S19-T3N-R68W (Bohrer)	MD Reference:	WELL @ 5085.0ft (Original Well Elev)
Site Error:	0.0ft	North Reference:	True
Reference Well:	Bohrer 2A-19H-E368	Survey Calculation Method:	Minimum Curvature
Well Error:	0.0ft	Output errors are at	2.00 sigma
Reference Wellbore	Hz	Database:	USA EDM 5000 Multi Users DB
Reference Design:	Plan #1	Offset TVD Reference:	Offset Datum

Offset Design S19-T3N-R68W (Bohrer) - Bohrer 2E-19H-E368 - Hz - Plan #1													Offset Site Error:	0.0 ft
Survey Program: 0-Geolink MWD													Offset Well Error:	0.0 ft
Reference		Offset		Semi Major Axis		Highside Toolface (°)	Distance		Total Uncertainty Axis	Separation Factor	Warning			
Measured Depth (ft)	Vertical Depth (ft)	Measured Depth (ft)	Vertical Depth (ft)	Reference (ft)	Offset (ft)		Offset Wellbore Centre +N/-S (ft)	+E/-W (ft)						
0.0	0.0	0.0	0.0	0.0	0.0	180.00	-40.1	0.0	40.1					
100.0	100.0	99.0	99.0	0.1	0.1	180.00	-40.1	0.0	40.1	39.8	0.26	153.830		
200.0	200.0	199.0	199.0	0.3	0.3	180.00	-40.1	0.0	40.1	39.5	0.61	65.786 CC, ES		
300.0	300.0	299.0	299.0	0.5	0.5	-146.85	-40.1	0.0	40.8	39.8	0.96	42.570		
400.0	400.0	399.0	399.0	0.7	0.7	-148.74	-40.1	0.0	43.0	41.7	1.31	32.871		
500.0	499.9	498.9	498.9	0.8	0.8	-151.50	-40.1	0.0	46.8	45.1	1.66	28.196		
600.0	599.7	598.7	598.7	1.0	1.0	-154.67	-40.1	0.0	52.2	50.2	2.01	25.976		
700.0	699.4	698.4	698.4	1.3	1.2	-157.06	-40.2	-0.8	59.4	57.0	2.36	25.131		
800.0	798.9	798.1	798.0	1.5	1.4	-158.00	-40.6	-3.4	68.2	65.4	2.72	25.058 SF		
900.0	898.3	897.6	897.5	1.7	1.5	-157.91	-41.3	-7.6	78.5	75.4	3.09	25.429		
1,000.0	997.4	996.9	996.6	2.0	1.7	-157.14	-42.3	-13.6	90.3	86.8	3.46	26.060		
1,100.0	1,096.3	1,096.1	1,095.4	2.3	1.9	-155.96	-43.5	-21.2	103.7	99.8	3.86	26.836		
1,200.0	1,194.9	1,194.9	1,193.8	2.6	2.1	-154.55	-45.0	-30.5	118.7	114.4	4.29	27.678		
1,300.0	1,293.3	1,293.4	1,291.7	3.0	2.4	-153.04	-46.8	-41.4	135.3	130.6	4.74	28.533		
1,400.0	1,391.2	1,391.5	1,389.0	3.4	2.6	-151.51	-48.8	-53.9	153.6	148.4	5.23	29.363		
1,500.0	1,488.9	1,489.4	1,485.9	3.8	2.9	-150.14	-51.0	-67.6	173.6	167.8	5.75	30.205		
1,600.0	1,586.1	1,587.0	1,582.5	4.2	3.1	-149.28	-53.2	-81.3	195.1	188.8	6.28	31.083		
1,700.0	1,683.2	1,684.6	1,679.1	4.6	3.4	-148.77	-55.4	-95.0	217.2	210.3	6.82	31.850		
1,800.0	1,780.3	1,782.1	1,775.6	5.1	3.7	-148.35	-57.7	-108.7	239.3	231.9	7.37	32.472		
1,900.0	1,877.3	1,879.6	1,872.1	5.5	4.0	-148.00	-59.9	-122.5	261.4	253.5	7.92	32.985		
2,000.0	1,974.4	1,977.1	1,968.6	6.0	4.3	-147.71	-62.1	-136.2	283.5	275.0	8.48	33.412		
2,100.0	2,071.5	2,074.6	2,065.1	6.4	4.5	-147.46	-64.3	-149.9	305.6	296.6	9.05	33.773		
2,200.0	2,168.6	2,172.1	2,161.7	6.9	4.8	-147.24	-66.5	-163.6	327.8	318.1	9.62	34.081		
2,300.0	2,265.7	2,269.6	2,258.2	7.3	5.1	-147.05	-68.8	-177.3	349.9	339.7	10.19	34.345		
2,400.0	2,362.7	2,367.2	2,354.7	7.8	5.4	-146.89	-71.0	-191.0	372.0	361.3	10.76	34.575		
2,500.0	2,459.8	2,464.7	2,451.2	8.2	5.7	-146.74	-73.2	-204.7	394.2	382.8	11.33	34.775		
2,600.0	2,556.9	2,562.2	2,547.7	8.7	6.0	-146.60	-75.4	-218.5	416.3	404.4	11.91	34.952		
2,700.0	2,654.0	2,659.7	2,644.3	9.1	6.3	-146.49	-77.6	-232.2	438.5	426.0	12.49	35.109		
2,800.0	2,751.0	2,757.2	2,740.8	9.6	6.6	-146.38	-79.8	-245.9	460.6	447.5	13.07	35.248		
2,900.0	2,848.1	2,854.7	2,837.3	10.0	6.9	-146.28	-82.1	-259.6	482.8	469.1	13.65	35.373		

Cathedral Energy Services

Anticollision Report

Company:	EnCana Oil & Gas (USA) Inc	Local Co-ordinate Reference:	Well Bohrer 2A-19H-E368
Project:	DJ Wattenberg	TVD Reference:	WELL @ 5085.0ft (Original Well Elev)
Reference Site:	S19-T3N-R68W (Bohrer)	MD Reference:	WELL @ 5085.0ft (Original Well Elev)
Site Error:	0.0ft	North Reference:	True
Reference Well:	Bohrer 2A-19H-E368	Survey Calculation Method:	Minimum Curvature
Well Error:	0.0ft	Output errors are at	2.00 sigma
Reference Wellbore	Hz	Database:	USA EDM 5000 Multi Users DB
Reference Design:	Plan #1	Offset TVD Reference:	Offset Datum

Offset Design S19-T3N-R68W (Bohrer) - Bohrer 2F-19H-E368 - Hz - Plan #1													Offset Site Error: 0.0 ft	
Survey Program: 0-Geolink MWD													Offset Well Error: 0.0 ft	
Reference		Offset		Semi Major Axis			Distance							Warning
Measured Depth	Vertical Depth	Measured Depth	Vertical Depth	Reference	Offset	Highside Toolface	Offset Wellbore Centre	Between Centres	Between Ellipses	Total Uncertainty	Separation			
(ft)	(ft)	(ft)	(ft)	(ft)	(ft)	(°)	+N/-S (ft)	+E/-W (ft)	(ft)	(ft)	Axis	Factor		
0.0	0.0	0.0	0.0	0.0	0.0	-180.00	-51.0	0.0	51.0					
100.0	100.0	99.0	99.0	0.1	0.1	-180.00	-51.0	0.0	51.0	50.7	0.26	195.784		
200.0	200.0	199.0	199.0	0.3	0.3	-180.00	-51.0	0.0	51.0	50.4	0.61	83.727	CC, ES	
300.0	300.0	299.0	299.0	0.5	0.5	-146.70	-51.0	0.0	51.7	50.8	0.96	53.972		
400.0	400.0	399.0	399.0	0.7	0.7	-148.22	-51.0	0.0	53.9	52.6	1.31	41.214		
500.0	499.9	498.9	498.9	0.8	0.8	-150.48	-51.0	0.0	57.7	56.0	1.66	34.750		
600.0	599.7	598.2	598.2	1.0	1.0	-152.47	-51.4	-0.7	63.4	61.4	2.01	31.506		
700.0	699.4	697.5	697.4	1.3	1.2	-153.44	-52.7	-3.0	71.4	69.0	2.37	30.139		
800.0	798.9	796.4	796.3	1.5	1.4	-153.61	-54.8	-6.7	81.6	78.9	2.73	29.858	SF	
900.0	898.3	895.1	894.8	1.7	1.5	-153.22	-57.7	-11.8	94.0	90.9	3.11	30.236		
1,000.0	997.4	993.3	992.7	2.0	1.7	-152.48	-61.5	-18.4	108.6	105.1	3.50	31.022		
1,100.0	1,096.3	1,091.1	1,090.1	2.3	2.0	-151.56	-66.1	-26.5	125.5	121.5	3.91	32.055		
1,200.0	1,194.9	1,188.3	1,186.6	2.6	2.2	-150.56	-71.5	-35.9	144.5	140.2	4.35	33.227		
1,300.0	1,293.3	1,284.9	1,282.4	3.0	2.4	-149.53	-77.6	-46.6	165.8	161.0	4.81	34.467		
1,400.0	1,391.2	1,380.7	1,377.3	3.4	2.7	-148.53	-84.5	-58.7	189.3	184.0	5.30	35.737		
1,500.0	1,488.9	1,477.4	1,472.7	3.8	3.0	-147.74	-91.9	-71.6	214.6	208.8	5.80	36.982		
1,600.0	1,586.1	1,573.7	1,567.9	4.2	3.3	-147.32	-99.2	-84.5	241.4	235.1	6.32	38.185		
1,700.0	1,683.2	1,669.9	1,663.0	4.6	3.6	-147.17	-106.5	-97.3	268.7	261.9	6.85	39.218		
1,800.0	1,780.3	1,766.1	1,758.0	5.1	3.8	-147.05	-113.9	-110.2	296.1	288.7	7.39	40.072		
1,900.0	1,877.3	1,862.3	1,853.1	5.5	4.1	-146.95	-121.2	-123.0	323.4	315.5	7.93	40.788		
2,000.0	1,974.4	1,958.5	1,948.1	6.0	4.4	-146.87	-128.5	-135.9	350.8	342.3	8.47	41.394		
2,100.0	2,071.5	2,054.6	2,043.2	6.4	4.7	-146.80	-135.9	-148.7	378.1	369.1	9.02	41.914		
2,200.0	2,168.6	2,150.8	2,138.2	6.9	5.0	-146.73	-143.2	-161.6	405.5	395.9	9.57	42.363		
2,300.0	2,265.7	2,247.0	2,233.2	7.3	5.3	-146.68	-150.5	-174.4	432.8	422.7	10.12	42.754		
2,400.0	2,362.7	2,343.2	2,328.3	7.8	5.6	-146.63	-157.9	-187.3	460.2	449.5	10.68	43.099		
2,500.0	2,459.8	2,439.4	2,423.3	8.2	5.9	-146.59	-165.2	-200.1	487.5	476.3	11.23	43.403		

Cathedral Energy Services

Anticollision Report

Company:	EnCana Oil & Gas (USA) Inc	Local Co-ordinate Reference:	Well Bohrer 2A-19H-E368
Project:	DJ Wattenberg	TVD Reference:	WELL @ 5085.0ft (Original Well Elev)
Reference Site:	S19-T3N-R68W (Bohrer)	MD Reference:	WELL @ 5085.0ft (Original Well Elev)
Site Error:	0.0ft	North Reference:	True
Reference Well:	Bohrer 2A-19H-E368	Survey Calculation Method:	Minimum Curvature
Well Error:	0.0ft	Output errors are at	2.00 sigma
Reference Wellbore	Hz	Database:	USA EDM 5000 Multi Users DB
Reference Design:	Plan #1	Offset TVD Reference:	Offset Datum

Offset Design S19-T3N-R68W (Bohrer) - Bohrer 2G-19H-E368 - Hz - Plan #1													Offset Site Error: 0.0 ft	
Survey Program: 0-Geolink MWD													Offset Well Error: 0.0 ft	
Reference		Offset		Semi Major Axis			Distance							Warning
Measured Depth	Vertical Depth	Measured Depth	Vertical Depth	Reference	Offset	Highside Toolface	Offset Wellbore Centre		Between Centres	Between Ellipses	Total Uncertainty	Separation		
(ft)	(ft)	(ft)	(ft)	(ft)	(ft)	(°)	+N/-S (ft)	+E/-W (ft)	(ft)	(ft)	Axis	Factor		
0.0	0.0	0.0	0.0	0.0	0.0	-180.00	-58.3	0.0	58.3					
100.0	100.0	99.0	99.0	0.1	0.1	-180.00	-58.3	0.0	58.3	58.0	0.26	223.753		
200.0	200.0	199.0	199.0	0.3	0.3	-180.00	-58.3	0.0	58.3	57.7	0.61	95.688	CC, ES	
300.0	300.0	299.0	299.0	0.5	0.5	-146.64	-58.3	0.0	59.0	58.1	0.96	61.573		
400.0	400.0	399.0	399.0	0.7	0.7	-147.97	-58.3	0.0	61.2	59.9	1.31	46.777		
500.0	499.9	498.1	498.1	0.8	0.8	-149.42	-58.9	-0.6	65.5	63.9	1.66	39.478		
600.0	599.7	597.1	597.1	1.0	1.0	-150.31	-60.7	-2.4	72.5	70.5	2.01	35.989		
700.0	699.4	695.8	695.6	1.3	1.2	-150.68	-63.6	-5.4	82.1	79.7	2.37	34.568		
800.0	798.9	794.1	793.7	1.5	1.4	-150.68	-67.8	-9.6	94.3	91.5	2.74	34.363	SF	
900.0	898.3	891.8	891.2	1.7	1.6	-150.41	-73.1	-15.0	109.1	106.0	3.13	34.909		
1,000.0	997.4	989.0	988.0	2.0	1.8	-149.98	-79.5	-21.5	126.5	123.0	3.52	35.928		
1,100.0	1,096.3	1,085.5	1,083.9	2.3	2.0	-149.48	-87.1	-29.2	146.4	142.5	3.93	37.242		
1,200.0	1,194.9	1,181.2	1,178.8	2.6	2.3	-148.93	-95.6	-37.9	169.0	164.6	4.36	38.733		
1,300.0	1,293.3	1,276.0	1,272.6	3.0	2.5	-148.39	-105.2	-47.6	194.0	189.2	4.81	40.321		
1,400.0	1,391.2	1,369.9	1,365.2	3.4	2.8	-147.85	-115.8	-58.3	221.5	216.2	5.28	41.951		
1,500.0	1,488.9	1,462.7	1,456.6	3.8	3.1	-147.33	-127.3	-70.0	251.5	245.7	5.77	43.585		
1,600.0	1,586.1	1,555.8	1,548.0	4.2	3.5	-146.87	-139.8	-82.6	283.8	277.6	6.28	45.192		
1,700.0	1,683.2	1,650.1	1,640.6	4.6	3.8	-146.67	-152.6	-95.6	316.9	310.1	6.81	46.532		
1,800.0	1,780.3	1,744.5	1,733.2	5.1	4.1	-146.51	-165.4	-108.5	349.9	342.6	7.34	47.642		
1,900.0	1,877.3	1,838.9	1,825.8	5.5	4.5	-146.38	-178.2	-121.5	382.9	375.0	7.88	48.573		
2,000.0	1,974.4	1,933.3	1,918.4	6.0	4.8	-146.27	-191.0	-134.5	416.0	407.5	8.43	49.364		
2,100.0	2,071.5	2,027.7	2,011.0	6.4	5.2	-146.17	-203.8	-147.5	449.0	440.0	8.97	50.042		
2,200.0	2,168.6	2,122.1	2,103.6	6.9	5.5	-146.09	-216.6	-160.4	482.0	472.5	9.52	50.628		

Cathedral Energy Services

Anticollision Report

Company:	EnCana Oil & Gas (USA) Inc	Local Co-ordinate Reference:	Well Bohrer 2A-19H-E368
Project:	DJ Wattenberg	TVD Reference:	WELL @ 5085.0ft (Original Well Elev)
Reference Site:	S19-T3N-R68W (Bohrer)	MD Reference:	WELL @ 5085.0ft (Original Well Elev)
Site Error:	0.0ft	North Reference:	True
Reference Well:	Bohrer 2A-19H-E368	Survey Calculation Method:	Minimum Curvature
Well Error:	0.0ft	Output errors are at	2.00 sigma
Reference Wellbore	Hz	Database:	USA EDM 5000 Multi Users DB
Reference Design:	Plan #1	Offset TVD Reference:	Offset Datum

Offset Design S19-T3N-R68W (Bohrer) - Bohrer 2H-19H-E368 - Hz - Plan #1													Offset Site Error:	0.0 ft
Survey Program: 0-Geolink MWD													Offset Well Error:	0.0 ft
Reference		Offset		Semi Major Axis			Distance							Warning
Measured Depth	Vertical Depth	Measured Depth	Vertical Depth	Reference	Offset	Highside Toolface	Offset Wellbore Centre		Between Centres	Between Ellipses	Total Uncertainty Axis	Separation Factor		
(ft)	(ft)	(ft)	(ft)	(ft)	(ft)	(°)	+N/-S (ft)	+E/-W (ft)	(ft)	(ft)				
0.0	0.0	0.0	0.0	0.0	0.0	-180.00	-69.2	0.0	69.2					
100.0	100.0	98.0	98.0	0.1	0.1	-180.00	-69.2	0.0	69.2	69.0	0.26	267.049		
200.0	200.0	198.0	198.0	0.3	0.3	-180.00	-69.2	0.0	69.2	68.6	0.61	113.956	CC, ES	
300.0	300.0	298.0	298.0	0.5	0.5	-146.56	-69.2	0.0	69.9	69.0	0.96	73.109		
400.0	400.0	397.0	397.0	0.7	0.6	-147.29	-69.9	-0.5	72.8	71.5	1.31	55.764		
500.0	499.9	495.8	495.7	0.8	0.8	-147.86	-71.9	-2.0	78.5	76.9	1.66	47.378		
600.0	599.7	594.3	594.1	1.0	1.0	-148.23	-75.3	-4.4	87.1	85.1	2.01	43.240		
700.0	699.4	692.4	692.1	1.3	1.2	-148.44	-80.1	-7.8	98.5	96.1	2.38	41.420		
800.0	798.9	790.0	789.4	1.5	1.4	-148.50	-86.2	-12.2	112.7	109.9	2.75	40.976	SF	
900.0	898.3	886.9	885.9	1.7	1.6	-148.45	-93.6	-17.5	129.6	126.5	3.13	41.392		
1,000.0	997.4	983.1	981.5	2.0	1.9	-148.34	-102.2	-23.8	149.4	145.9	3.53	42.357		
1,100.0	1,096.3	1,078.4	1,076.0	2.3	2.1	-148.18	-112.1	-30.8	171.9	167.9	3.93	43.678		
1,200.0	1,194.9	1,172.8	1,169.5	2.6	2.4	-147.99	-123.1	-38.8	197.0	192.7	4.36	45.223		
1,300.0	1,293.3	1,266.2	1,261.6	3.0	2.7	-147.78	-135.2	-47.5	224.9	220.1	4.79	46.903		
1,400.0	1,391.2	1,358.4	1,352.4	3.4	3.0	-147.56	-148.3	-56.9	255.3	250.1	5.25	48.659		
1,500.0	1,488.9	1,449.4	1,441.7	3.8	3.3	-147.33	-162.5	-67.1	288.4	282.7	5.72	50.446		
1,600.0	1,586.1	1,539.0	1,529.4	4.2	3.7	-147.13	-177.5	-77.9	324.0	317.8	6.20	52.231		
1,700.0	1,683.2	1,629.0	1,617.2	4.6	4.0	-147.03	-193.7	-89.6	361.2	354.5	6.71	53.833		
1,800.0	1,780.3	1,721.8	1,707.5	5.1	4.4	-146.91	-210.6	-101.8	398.7	391.5	7.23	55.149		
1,900.0	1,877.3	1,814.5	1,797.8	5.5	4.8	-146.82	-227.6	-113.9	436.2	428.4	7.75	56.257		
2,000.0	1,974.4	1,907.2	1,888.2	6.0	5.2	-146.74	-244.5	-126.1	473.7	465.4	8.28	57.201		

Cathedral Energy Services

Anticollision Report

Company:	EnCana Oil & Gas (USA) Inc	Local Co-ordinate Reference:	Well Bohrer 2A-19H-E368
Project:	DJ Wattenberg	TVD Reference:	WELL @ 5085.0ft (Original Well Elev)
Reference Site:	S19-T3N-R68W (Bohrer)	MD Reference:	WELL @ 5085.0ft (Original Well Elev)
Site Error:	0.0ft	North Reference:	True
Reference Well:	Bohrer 2A-19H-E368	Survey Calculation Method:	Minimum Curvature
Well Error:	0.0ft	Output errors are at	2.00 sigma
Reference Wellbore	Hz	Database:	USA EDM 5000 Multi Users DB
Reference Design:	Plan #1	Offset TVD Reference:	Offset Datum

Offset Design S19-T3N-R68W (Bohrer) - Bohrer 2I-19H-E368 - Hz - Plan #1												Offset Site Error:	0.0 ft
Survey Program: 0-Geolink MWD												Offset Well Error:	0.0 ft
Reference		Offset		Semi Major Axis			Distance						Warning
Measured Depth	Vertical Depth	Measured Depth	Vertical Depth	Reference	Offset	Highside Toolface	Offset Wellbore Centre		Between Centres	Between Ellipses	Total Uncertainty Axis	Separation Factor	
(ft)	(ft)	(ft)	(ft)	(ft)	(ft)	(°)	+N/-S (ft)	+E/-W (ft)	(ft)	(ft)			
0.0	0.0	0.0	0.0	0.0	0.0	-180.00	-80.1	0.0	80.2				
100.0	100.0	98.0	98.0	0.1	0.1	-180.00	-80.1	0.0	80.1	79.9	0.26	309.214	
200.0	200.0	198.0	198.0	0.3	0.3	-180.00	-80.1	0.0	80.1	79.5	0.61	131.949	CC, ES
300.0	300.0	296.8	296.8	0.5	0.5	-146.22	-80.9	-0.4	81.6	80.6	0.95	85.456	
400.0	400.0	395.4	395.4	0.7	0.7	-146.34	-83.1	-1.6	86.0	84.7	1.30	65.947	
500.0	499.9	493.8	493.7	0.8	0.8	-146.51	-86.7	-3.6	93.4	91.7	1.66	56.344	
600.0	599.7	591.8	591.5	1.0	1.0	-146.70	-91.9	-6.5	103.7	101.6	2.01	51.444	
700.0	699.4	689.3	688.7	1.3	1.2	-146.88	-98.4	-10.1	116.9	114.5	2.38	49.117	
800.0	798.9	786.2	785.1	1.5	1.5	-147.04	-106.4	-14.5	133.0	130.3	2.75	48.326	SF
900.0	898.3	882.3	880.7	1.7	1.7	-147.17	-115.7	-19.6	152.0	148.9	3.13	48.501	
1,000.0	997.4	977.5	975.1	2.0	2.0	-147.27	-126.3	-25.4	173.9	170.3	3.53	49.304	
1,100.0	1,096.3	1,071.8	1,068.4	2.3	2.2	-147.34	-138.1	-32.0	198.5	194.6	3.93	50.521	
1,200.0	1,194.9	1,165.0	1,160.4	2.6	2.5	-147.37	-151.1	-39.2	226.0	221.6	4.34	52.010	
1,300.0	1,293.3	1,257.0	1,251.0	3.0	2.8	-147.39	-165.3	-47.0	256.2	251.4	4.77	53.674	
1,400.0	1,391.2	1,347.7	1,340.1	3.4	3.2	-147.37	-180.5	-55.3	289.0	283.8	5.21	55.446	
1,500.0	1,488.9	1,437.1	1,427.5	3.8	3.5	-147.34	-196.6	-64.3	324.6	318.9	5.67	57.279	
1,600.0	1,586.1	1,525.1	1,513.3	4.2	3.9	-147.31	-213.7	-73.7	362.7	356.6	6.13	59.133	
1,700.0	1,683.2	1,611.9	1,597.6	4.6	4.3	-147.39	-231.7	-83.6	402.5	395.9	6.62	60.828	
1,800.0	1,780.3	1,700.0	1,682.9	5.1	4.7	-147.35	-251.1	-94.3	443.5	436.4	7.12	62.334	
1,900.0	1,877.3	1,782.5	1,762.4	5.5	5.1	-147.24	-270.3	-104.9	485.7	478.1	7.61	63.822	

Cathedral Energy Services

Anticollision Report

Company:	EnCana Oil & Gas (USA) Inc	Local Co-ordinate Reference:	Well Bohrer 2A-19H-E368
Project:	DJ Wattenberg	TVD Reference:	WELL @ 5085.0ft (Original Well Elev)
Reference Site:	S19-T3N-R68W (Bohrer)	MD Reference:	WELL @ 5085.0ft (Original Well Elev)
Site Error:	0.0ft	North Reference:	True
Reference Well:	Bohrer 2A-19H-E368	Survey Calculation Method:	Minimum Curvature
Well Error:	0.0ft	Output errors are at	2.00 sigma
Reference Wellbore	Hz	Database:	USA EDM 5000 Multi Users DB
Reference Design:	Plan #1	Offset TVD Reference:	Offset Datum

Reference Depths are relative to WELL @ 5085.0ft (Original Well Elev)
 Offset Depths are relative to Offset Datum
 Central Meridian is -105.500000 °

Coordinates are relative to: Bohrer 2A-19H-E368
 Coordinate System is US State Plane 1983, Colorado Northern Zone
 Grid Convergence at Surface is: 0.29°

