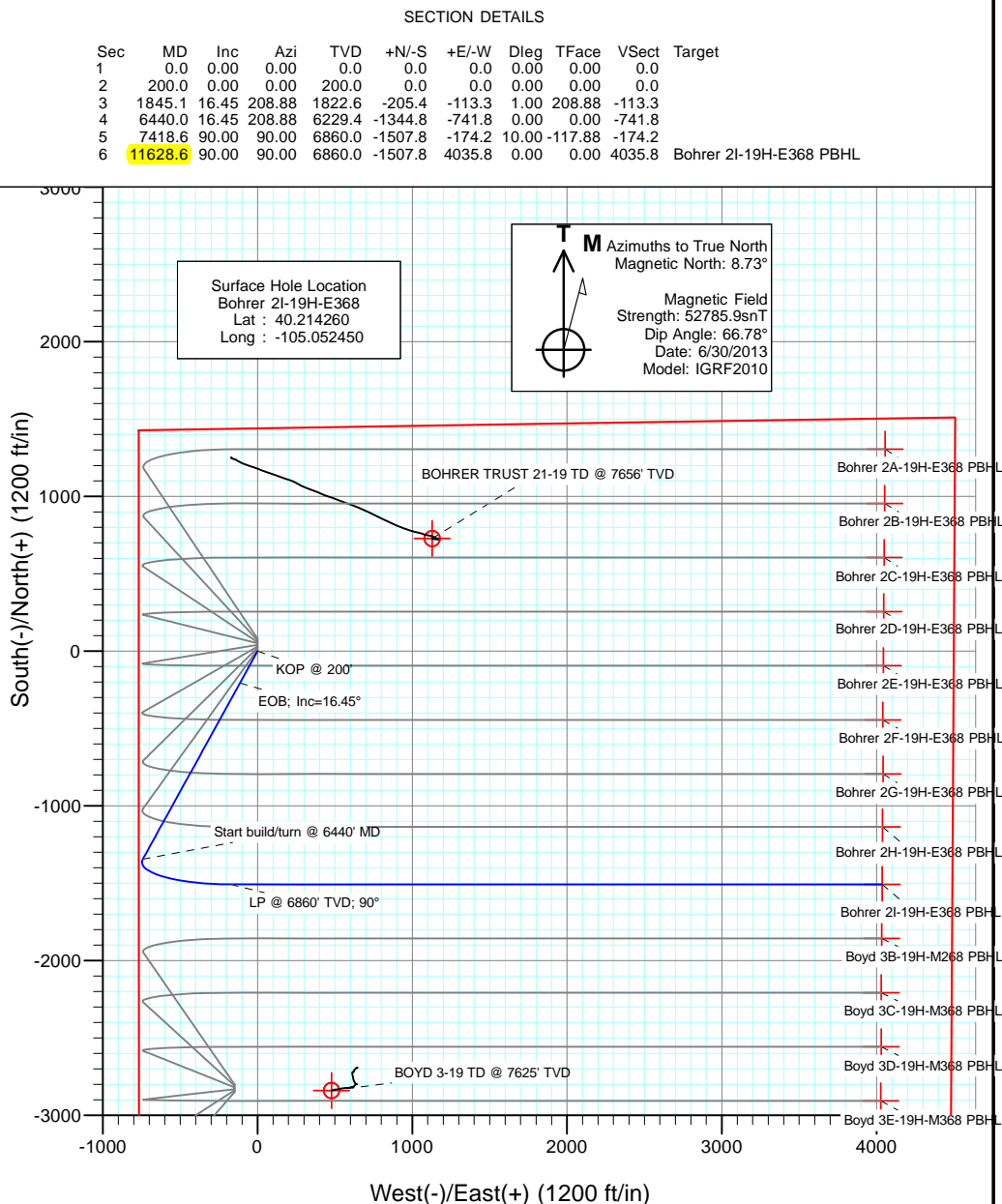
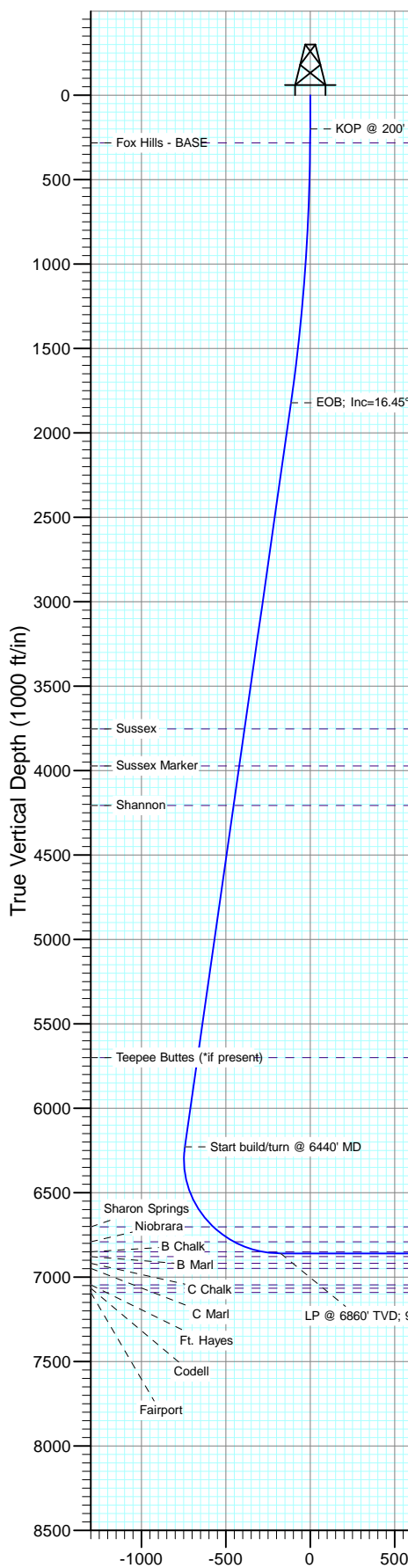




Project: DJ Wattenberg
Site: S19-T3N-R68W (Bohrer)
Well: Bohrer 2I-19H-E368
Wellbore: Hz
Design: Plan #1



DESIGN TARGET DETAILS					
Name	+N/-S	+E/-W	Northing	Easting	Latitude
Bohrer 2I-19H-E368 PBHL	-1507.8	4035.8	1319727.78	3129037.85	40.210120

FORMATION TOP DETAILS		
TVDPath	MDPath	Formation
283.0	283.0	Fox Hills - BASE
3754.0	3859.0	Sussex
3973.0	4087.3	Sussex Marker
4207.0	4331.3	Shannon
5700.0	5888.0	Teepee Buttes (*if present)
6703.0	6976.7	Sharon Springs
6791.0	7129.8	Niobrara
6850.0	7309.7	B Chalk

Plan #1
Bohrer 2I-19H-E368
13xxx; LR
WELL @ 5083.0ft (Original Well Elev)
Ground Elevation @ 5058.0
North American Datum 1983
Well Bohrer 2I-19H-E368, True North

Vertical Section at 90.00° (1000 ft/in)

Cathedral Energy Services

Planning Report

Database:	USA EDM 5000 Multi Users DB	Local Co-ordinate Reference:	Well Bohrer 2I-19H-E368
Company:	EnCana Oil & Gas (USA) Inc	TVD Reference:	WELL @ 5083.0ft (Original Well Elev)
Project:	DJ Wattenberg	MD Reference:	WELL @ 5083.0ft (Original Well Elev)
Site:	S19-T3N-R68W (Bohrer)	North Reference:	True
Well:	Bohrer 2I-19H-E368	Survey Calculation Method:	Minimum Curvature
Wellbore:	Hz		
Design:	Plan #1		

Project	DJ Wattenberg		
Map System:	US State Plane 1983	System Datum:	Mean Sea Level
Geo Datum:	North American Datum 1983		
Map Zone:	Colorado Northern Zone		

Site		S19-T3N-R68W (Bohrer)			
Site Position:		Northing:	1,318,413.14 ft	Latitude:	40.206570
From:	Lat/Long	Easting:	3,124,860.64 ft	Longitude:	-105.052980
Position Uncertainty:	0.0 ft	Slot Radius:	13.200 in	Grid Convergence:	0.29 °

Well	Bohrer 2I-19H-E368					
Well Position	+N/-S	0.0 ft	Northing:	1,321,215.19 ft	Latitude:	40.214260
	+E/-W	0.0 ft	Easting:	3,124,994.53 ft	Longitude:	-105.052450
Position Uncertainty		0.0 ft	Wellhead Elevation:	ft	Ground Level:	5,058.0 ft

Wellbore	Hz				
Magnetics	Model Name	Sample Date	Declination (°)	Dip Angle (°)	Field Strength (nT)
	IGRF2010	6/30/2013	8.73	66.78	52,786

Design	Plan #1			
Audit Notes:				
Version:	Phase:	PLAN	Tie On Depth:	0.0
Vertical Section:	Depth From (TVD) (ft)	+N/-S (ft)	+E/-W (ft)	Direction (°)
	0.0	0.0	0.0	90.00

Plan Sections										
Measured Depth (ft)	Inclination (°)	Azimuth (°)	Vertical Depth (ft)	+N/-S (ft)	+E/-W (ft)	Dogleg Rate (°/100ft)	Build Rate (°/100ft)	Turn Rate (°/100ft)	TFO (°)	Target
0.0	0.00	0.00	0.0	0.0	0.0	0.00	0.00	0.00	0.00	
200.0	0.00	0.00	200.0	0.0	0.0	0.00	0.00	0.00	0.00	
1,845.1	16.45	208.88	1,822.6	-205.4	-113.3	1.00	1.00	0.00	208.88	
6,440.0	16.45	208.88	6,229.4	-1,344.8	-741.8	0.00	0.00	0.00	0.00	
7,418.6	90.00	90.00	6,860.0	-1,507.8	-174.2	10.00	7.52	-12.15	-117.88	
11,628.6	90.00	90.00	6,860.0	-1,507.8	4,035.8	0.00	0.00	0.00	0.00	Bohrer 2I-19H-E368 F

Cathedral Energy Services

Planning Report

Database:	USA EDM 5000 Multi Users DB	Local Co-ordinate Reference:	Well Bohrer 2I-19H-E368
Company:	EnCana Oil & Gas (USA) Inc	TVD Reference:	WELL @ 5083.0ft (Original Well Elev)
Project:	DJ Wattenberg	MD Reference:	WELL @ 5083.0ft (Original Well Elev)
Site:	S19-T3N-R68W (Bohrer)	North Reference:	True
Well:	Bohrer 2I-19H-E368	Survey Calculation Method:	Minimum Curvature
Wellbore:	Hz		
Design:	Plan #1		

Planned Survey									
Measured Depth (ft)	Inclination (°)	Azimuth (°)	Vertical Depth (ft)	+N/-S (ft)	+E/-W (ft)	Vertical Section (ft)	Dogleg Rate (°/100ft)	Build Rate (°/100ft)	Comments / Formations
0.0	0.00	0.00	0.0	0.0	0.0	0.0	0.00	0.00	
100.0	0.00	0.00	100.0	0.0	0.0	0.0	0.00	0.00	
200.0	0.00	0.00	200.0	0.0	0.0	0.0	0.00	0.00	KOP @ 200'
283.0	0.83	208.88	283.0	-0.5	-0.3	-0.3	1.00	1.00	Fox Hills - BASE
300.0	1.00	208.88	300.0	-0.8	-0.4	-0.4	1.00	1.00	
400.0	2.00	208.88	400.0	-3.1	-1.7	-1.7	1.00	1.00	
500.0	3.00	208.88	499.9	-6.9	-3.8	-3.8	1.00	1.00	
600.0	4.00	208.88	599.7	-12.2	-6.7	-6.7	1.00	1.00	
700.0	5.00	208.88	699.4	-19.1	-10.5	-10.5	1.00	1.00	
800.0	6.00	208.88	798.9	-27.5	-15.2	-15.2	1.00	1.00	
900.0	7.00	208.88	898.3	-37.4	-20.6	-20.6	1.00	1.00	
1,000.0	8.00	208.88	997.4	-48.8	-26.9	-26.9	1.00	1.00	
1,100.0	9.00	208.88	1,096.3	-61.8	-34.1	-34.1	1.00	1.00	
1,200.0	10.00	208.88	1,194.9	-76.2	-42.0	-42.0	1.00	1.00	
1,300.0	11.00	208.88	1,293.3	-92.2	-50.8	-50.8	1.00	1.00	
1,400.0	12.00	208.88	1,391.2	-109.6	-60.5	-60.5	1.00	1.00	
1,500.0	13.00	208.88	1,488.9	-128.6	-70.9	-70.9	1.00	1.00	
1,600.0	14.00	208.88	1,586.1	-149.0	-82.2	-82.2	1.00	1.00	
1,700.0	15.00	208.88	1,682.9	-170.9	-94.3	-94.3	1.00	1.00	
1,800.0	16.00	208.88	1,779.3	-194.3	-107.2	-107.2	1.00	1.00	
1,845.1	16.45	208.88	1,822.6	-205.4	-113.3	-113.3	1.00	1.00	EOB; Inc=16.45°
1,900.0	16.45	208.88	1,875.2	-219.0	-120.8	-120.8	0.00	0.00	
2,000.0	16.45	208.88	1,971.1	-243.8	-134.5	-134.5	0.00	0.00	
2,100.0	16.45	208.88	2,067.1	-268.6	-148.2	-148.2	0.00	0.00	
2,200.0	16.45	208.88	2,163.0	-293.4	-161.8	-161.8	0.00	0.00	
2,300.0	16.45	208.88	2,258.9	-318.2	-175.5	-175.5	0.00	0.00	
2,400.0	16.45	208.88	2,354.8	-343.0	-189.2	-189.2	0.00	0.00	
2,500.0	16.45	208.88	2,450.7	-367.8	-202.9	-202.9	0.00	0.00	
2,600.0	16.45	208.88	2,546.6	-392.6	-216.6	-216.6	0.00	0.00	
2,700.0	16.45	208.88	2,642.5	-417.4	-230.2	-230.2	0.00	0.00	
2,800.0	16.45	208.88	2,738.4	-442.2	-243.9	-243.9	0.00	0.00	
2,900.0	16.45	208.88	2,834.3	-467.0	-257.6	-257.6	0.00	0.00	
3,000.0	16.45	208.88	2,930.2	-491.8	-271.3	-271.3	0.00	0.00	
3,100.0	16.45	208.88	3,026.1	-516.6	-284.9	-284.9	0.00	0.00	
3,200.0	16.45	208.88	3,122.0	-541.3	-298.6	-298.6	0.00	0.00	
3,300.0	16.45	208.88	3,217.9	-566.1	-312.3	-312.3	0.00	0.00	
3,400.0	16.45	208.88	3,313.8	-590.9	-326.0	-326.0	0.00	0.00	
3,500.0	16.45	208.88	3,409.7	-615.7	-339.7	-339.7	0.00	0.00	
3,600.0	16.45	208.88	3,505.6	-640.5	-353.3	-353.3	0.00	0.00	
3,700.0	16.45	208.88	3,601.6	-665.3	-367.0	-367.0	0.00	0.00	
3,800.0	16.45	208.88	3,697.5	-690.1	-380.7	-380.7	0.00	0.00	
3,859.0	16.45	208.88	3,754.0	-704.7	-388.8	-388.8	0.00	0.00	Sussex
3,900.0	16.45	208.88	3,793.4	-714.9	-394.4	-394.4	0.00	0.00	
4,000.0	16.45	208.88	3,889.3	-739.7	-408.1	-408.1	0.00	0.00	
4,087.3	16.45	208.88	3,973.0	-761.4	-420.0	-420.0	0.00	0.00	Sussex Marker
4,100.0	16.45	208.88	3,985.2	-764.5	-421.7	-421.7	0.00	0.00	
4,200.0	16.45	208.88	4,081.1	-789.3	-435.4	-435.4	0.00	0.00	
4,300.0	16.45	208.88	4,177.0	-814.1	-449.1	-449.1	0.00	0.00	
4,331.3	16.45	208.88	4,207.0	-821.9	-453.4	-453.4	0.00	0.00	Shannon
4,400.0	16.45	208.88	4,272.9	-838.9	-462.8	-462.8	0.00	0.00	
4,500.0	16.45	208.88	4,368.8	-863.7	-476.4	-476.4	0.00	0.00	
4,600.0	16.45	208.88	4,464.7	-888.5	-490.1	-490.1	0.00	0.00	

Cathedral Energy Services

Planning Report

Database:	USA EDM 5000 Multi Users DB	Local Co-ordinate Reference:	Well Bohrer 2I-19H-E368
Company:	EnCana Oil & Gas (USA) Inc	TVD Reference:	WELL @ 5083.0ft (Original Well Elev)
Project:	DJ Wattenberg	MD Reference:	WELL @ 5083.0ft (Original Well Elev)
Site:	S19-T3N-R68W (Bohrer)	North Reference:	True
Well:	Bohrer 2I-19H-E368	Survey Calculation Method:	Minimum Curvature
Wellbore:	Hz		
Design:	Plan #1		

Planned Survey									
Measured Depth (ft)	Inclination (°)	Azimuth (°)	Vertical Depth (ft)	+N/-S (ft)	+E/-W (ft)	Vertical Section (ft)	Dogleg Rate (°/100ft)	Build Rate (°/100ft)	Comments / Formations
4,700.0	16.45	208.88	4,560.6	-913.3	-503.8	-503.8	0.00	0.00	
4,800.0	16.45	208.88	4,656.5	-938.1	-517.5	-517.5	0.00	0.00	
4,900.0	16.45	208.88	4,752.4	-962.9	-531.2	-531.2	0.00	0.00	
5,000.0	16.45	208.88	4,848.3	-987.7	-544.8	-544.8	0.00	0.00	
5,100.0	16.45	208.88	4,944.2	-1,012.5	-558.5	-558.5	0.00	0.00	
5,200.0	16.45	208.88	5,040.2	-1,037.3	-572.2	-572.2	0.00	0.00	
5,300.0	16.45	208.88	5,136.1	-1,062.1	-585.9	-585.9	0.00	0.00	
5,400.0	16.45	208.88	5,232.0	-1,086.9	-599.6	-599.6	0.00	0.00	
5,500.0	16.45	208.88	5,327.9	-1,111.7	-613.2	-613.2	0.00	0.00	
5,600.0	16.45	208.88	5,423.8	-1,136.5	-626.9	-626.9	0.00	0.00	
5,700.0	16.45	208.88	5,519.7	-1,161.3	-640.6	-640.6	0.00	0.00	
5,800.0	16.45	208.88	5,615.6	-1,186.1	-654.3	-654.3	0.00	0.00	
5,888.0	16.45	208.88	5,700.0	-1,207.9	-666.3	-666.3	0.00	0.00	Teepee Buttes (*if present)
5,900.0	16.45	208.88	5,711.5	-1,210.9	-668.0	-668.0	0.00	0.00	
6,000.0	16.45	208.88	5,807.4	-1,235.6	-681.6	-681.6	0.00	0.00	
6,100.0	16.45	208.88	5,903.3	-1,260.4	-695.3	-695.3	0.00	0.00	
6,200.0	16.45	208.88	5,999.2	-1,285.2	-709.0	-709.0	0.00	0.00	
6,300.0	16.45	208.88	6,095.1	-1,310.0	-722.7	-722.7	0.00	0.00	
6,400.0	16.45	208.88	6,191.0	-1,334.8	-736.3	-736.3	0.00	0.00	
6,440.0	16.45	208.88	6,229.4	-1,344.8	-741.8	-741.8	0.00	0.00	Start build/turn @ 6440' MD
6,500.0	14.61	187.41	6,287.2	-1,359.7	-746.9	-746.9	10.00	-3.06	
6,600.0	16.58	150.27	6,383.8	-1,384.7	-741.4	-741.4	10.00	1.97	
6,700.0	23.06	127.39	6,478.0	-1,409.0	-718.7	-718.7	10.00	6.48	
6,800.0	31.38	115.08	6,566.9	-1,432.0	-679.5	-679.5	10.00	8.31	
6,900.0	40.40	107.68	6,647.8	-1,452.9	-624.9	-624.9	10.00	9.03	
6,976.7	47.55	103.68	6,703.0	-1,467.2	-573.7	-573.7	10.00	9.32	Sharon Springs
7,000.0	49.75	102.64	6,718.4	-1,471.2	-556.6	-556.6	10.00	9.43	
7,100.0	59.26	98.84	6,776.4	-1,486.2	-476.7	-476.7	10.00	9.51	
7,129.8	62.12	97.86	6,791.0	-1,490.0	-451.0	-451.0	10.00	9.58	Niobrara
7,200.0	68.87	95.74	6,820.1	-1,497.5	-387.6	-387.6	10.00	9.61	
7,300.0	78.52	93.01	6,848.2	-1,504.7	-292.0	-292.0	10.00	9.65	
7,309.7	79.46	92.76	6,850.0	-1,505.2	-282.5	-282.5	10.00	9.67	B Chalk
7,400.0	88.20	90.47	6,859.7	-1,507.7	-192.9	-192.9	10.00	9.68	
7,418.6	90.00	90.00	6,860.0	-1,507.8	-174.2	-174.2	10.00	9.68	LP @ 6860' TVD; 90°
7,500.0	90.00	90.00	6,860.0	-1,507.8	-92.9	-92.9	0.00	0.00	
7,600.0	90.00	90.00	6,860.0	-1,507.8	7.1	7.1	0.00	0.00	
7,700.0	90.00	90.00	6,860.0	-1,507.8	107.1	107.1	0.00	0.00	
7,800.0	90.00	90.00	6,860.0	-1,507.8	207.1	207.1	0.00	0.00	
7,900.0	90.00	90.00	6,860.0	-1,507.8	307.1	307.1	0.00	0.00	
8,000.0	90.00	90.00	6,860.0	-1,507.8	407.1	407.1	0.00	0.00	
8,100.0	90.00	90.00	6,860.0	-1,507.8	507.1	507.1	0.00	0.00	
8,200.0	90.00	90.00	6,860.0	-1,507.8	607.1	607.1	0.00	0.00	
8,300.0	90.00	90.00	6,860.0	-1,507.8	707.1	707.1	0.00	0.00	
8,400.0	90.00	90.00	6,860.0	-1,507.8	807.1	807.1	0.00	0.00	
8,500.0	90.00	90.00	6,860.0	-1,507.8	907.1	907.1	0.00	0.00	
8,600.0	90.00	90.00	6,860.0	-1,507.8	1,007.1	1,007.1	0.00	0.00	
8,700.0	90.00	90.00	6,860.0	-1,507.8	1,107.1	1,107.1	0.00	0.00	
8,800.0	90.00	90.00	6,860.0	-1,507.8	1,207.1	1,207.1	0.00	0.00	
8,900.0	90.00	90.00	6,860.0	-1,507.8	1,307.1	1,307.1	0.00	0.00	
9,000.0	90.00	90.00	6,860.0	-1,507.8	1,407.1	1,407.1	0.00	0.00	
9,100.0	90.00	90.00	6,860.0	-1,507.8	1,507.1	1,507.1	0.00	0.00	
9,200.0	90.00	90.00	6,860.0	-1,507.8	1,607.1	1,607.1	0.00	0.00	

Cathedral Energy Services

Planning Report

Database:	USA EDM 5000 Multi Users DB	Local Co-ordinate Reference:	Well Bohrer 2I-19H-E368
Company:	EnCana Oil & Gas (USA) Inc	TVD Reference:	WELL @ 5083.0ft (Original Well Elev)
Project:	DJ Wattenberg	MD Reference:	WELL @ 5083.0ft (Original Well Elev)
Site:	S19-T3N-R68W (Bohrer)	North Reference:	True
Well:	Bohrer 2I-19H-E368	Survey Calculation Method:	Minimum Curvature
Wellbore:	Hz		
Design:	Plan #1		

Planned Survey									
Measured Depth (ft)	Inclination (°)	Azimuth (°)	Vertical Depth (ft)	+N/-S (ft)	+E/-W (ft)	Vertical Section (ft)	Dogleg Rate (°/100ft)	Build Rate (°/100ft)	Comments / Formations
9,300.0	90.00	90.00	6,860.0	-1,507.8	1,707.1	1,707.1	0.00	0.00	
9,400.0	90.00	90.00	6,860.0	-1,507.8	1,807.1	1,807.1	0.00	0.00	
9,500.0	90.00	90.00	6,860.0	-1,507.8	1,907.1	1,907.1	0.00	0.00	
9,600.0	90.00	90.00	6,860.0	-1,507.8	2,007.1	2,007.1	0.00	0.00	
9,700.0	90.00	90.00	6,860.0	-1,507.8	2,107.1	2,107.1	0.00	0.00	
9,800.0	90.00	90.00	6,860.0	-1,507.8	2,207.1	2,207.1	0.00	0.00	
9,900.0	90.00	90.00	6,860.0	-1,507.8	2,307.1	2,307.1	0.00	0.00	
10,000.0	90.00	90.00	6,860.0	-1,507.8	2,407.1	2,407.1	0.00	0.00	
10,100.0	90.00	90.00	6,860.0	-1,507.8	2,507.1	2,507.1	0.00	0.00	
10,200.0	90.00	90.00	6,860.0	-1,507.8	2,607.1	2,607.1	0.00	0.00	
10,300.0	90.00	90.00	6,860.0	-1,507.8	2,707.1	2,707.1	0.00	0.00	
10,400.0	90.00	90.00	6,860.0	-1,507.8	2,807.1	2,807.1	0.00	0.00	
10,500.0	90.00	90.00	6,860.0	-1,507.8	2,907.1	2,907.1	0.00	0.00	
10,600.0	90.00	90.00	6,860.0	-1,507.8	3,007.1	3,007.1	0.00	0.00	
10,700.0	90.00	90.00	6,860.0	-1,507.8	3,107.1	3,107.1	0.00	0.00	
10,800.0	90.00	90.00	6,860.0	-1,507.8	3,207.1	3,207.1	0.00	0.00	
10,900.0	90.00	90.00	6,860.0	-1,507.8	3,307.1	3,307.1	0.00	0.00	
11,000.0	90.00	90.00	6,860.0	-1,507.8	3,407.1	3,407.1	0.00	0.00	
11,100.0	90.00	90.00	6,860.0	-1,507.8	3,507.1	3,507.1	0.00	0.00	
11,200.0	90.00	90.00	6,860.0	-1,507.8	3,607.1	3,607.1	0.00	0.00	
11,300.0	90.00	90.00	6,860.0	-1,507.8	3,707.1	3,707.1	0.00	0.00	
11,400.0	90.00	90.00	6,860.0	-1,507.8	3,807.1	3,807.1	0.00	0.00	
11,500.0	90.00	90.00	6,860.0	-1,507.8	3,907.1	3,907.1	0.00	0.00	
11,600.0	90.00	90.00	6,860.0	-1,507.8	4,007.1	4,007.1	0.00	0.00	
11,628.6	90.00	90.00	6,860.0	-1,507.8	4,035.8	4,035.8	0.00	0.00	TD at 11628.6

Targets									
Target Name	Dip Angle (°)	Dip Dir. (°)	TVD (ft)	+N/-S (ft)	+E/-W (ft)	Northing (ft)	Easting (ft)	Latitude	Longitude
- hit/miss target									
- Shape									
Bohrer 2I-19H-E368 PBI	0.00	0.00	6,860.0	-1,507.8	4,035.8	1,319,727.78	3,129,037.85	40.210120	-105.038000
- plan hits target center									
- Point									

Formations						
Measured Depth (ft)	Vertical Depth (ft)	Name	Lithology	Dip (°)	Dip Direction (°)	
283.0	283.0	Fox Hills - BASE				
3,859.0	3,754.0	Sussex				
4,087.3	3,973.0	Sussex Marker				
4,331.3	4,207.0	Shannon				
5,888.0	5,700.0	Teepee Buttes (*if present)				
6,976.7	6,703.0	Sharon Springs				
7,129.8	6,791.0	Niobrara				
7,309.7	6,850.0	B Chalk				

Cathedral Energy Services

Planning Report

Database:	USA EDM 5000 Multi Users DB	Local Co-ordinate Reference:	Well Bohrer 2I-19H-E368
Company:	EnCana Oil & Gas (USA) Inc	TVD Reference:	WELL @ 5083.0ft (Original Well Elev)
Project:	DJ Wattenberg	MD Reference:	WELL @ 5083.0ft (Original Well Elev)
Site:	S19-T3N-R68W (Bohrer)	North Reference:	True
Well:	Bohrer 2I-19H-E368	Survey Calculation Method:	Minimum Curvature
Wellbore:	Hz		
Design:	Plan #1		

Plan Annotations				
Measured Depth (ft)	Vertical Depth (ft)	Local Coordinates		Comment
		+N/-S (ft)	+E/-W (ft)	
200.0	200.0	0.0	0.0	KOP @ 200'
1,845.1	1,822.6	-205.4	-113.3	EOB; Inc=16.45°
6,440.0	6,229.4	-1,344.8	-741.8	Start build/turn @ 6440' MD
7,418.6	6,860.0	-1,507.8	-174.2	LP @ 6860' TVD; 90°
11,628.6	6,860.0	-1,507.8	4,035.8	TD at 11628.6

EnCana Oil & Gas (USA) Inc

DJ Wattenberg

S19-T3N-R68W (Bohrer)

Bohrer 2I-19H-E368

Hz

Plan #1

Anticollision Report

30 June, 2013

Cathedral Energy Services

Anticollision Report

Company:	EnCana Oil & Gas (USA) Inc	Local Co-ordinate Reference:	Well Bohrer 2I-19H-E368
Project:	DJ Wattenberg	TVD Reference:	WELL @ 5083.0ft (Original Well Elev)
Reference Site:	S19-T3N-R68W (Bohrer)	MD Reference:	WELL @ 5083.0ft (Original Well Elev)
Site Error:	0.0ft	North Reference:	True
Reference Well:	Bohrer 2I-19H-E368	Survey Calculation Method:	Minimum Curvature
Well Error:	0.0ft	Output errors are at	2.00 sigma
Reference Wellbore	Hz	Database:	USA EDM 5000 Multi Users DB
Reference Design:	Plan #1	Offset TVD Reference:	Offset Datum

Reference	Plan #1		
Filter type:	NO GLOBAL FILTER: Using user defined selection & filtering criteria		
Interpolation Method:	MD Interval 100.0ft	Error Model:	Systematic Ellipse
Depth Range:	Unlimited	Scan Method:	Closest Approach 3D
Results Limited by:	Maximum center-center distance of 500.0ft	Error Surface:	Elliptical Conic
Warning Levels Evaluated at:	2.00 Sigma		

Survey Tool Program		Date	6/30/2013		
From (ft)	To (ft)	Survey (Wellbore)	Tool Name	Description	
0.0	11,628.6	Plan #1 (Hz)	Geolink MWD	Geolink MWD	

Summary						
Site Name	Reference Measured Depth (ft)	Offset Measured Depth (ft)	Distance Between Centres (ft)	Distance Between Ellipses (ft)	Separation Factor	Warning
Offset Well - Wellbore - Design						
S19-T3N-R68W (Bohrer)						
Bohrer 2A-19H-E368 - Hz - Plan #1	166.0	168.0	80.1	79.6	161.700	CC
Bohrer 2A-19H-E368 - Hz - Plan #1	200.0	202.0	80.1	79.5	130.457	ES
Bohrer 2A-19H-E368 - Hz - Plan #1	800.0	790.4	133.4	130.6	48.335	SF
Bohrer 2B-19H-E368 - Hz - Plan #1	200.0	202.0	69.2	68.6	112.654	CC, ES
Bohrer 2B-19H-E368 - Hz - Plan #1	800.0	794.4	112.6	109.8	40.825	SF
Bohrer 2C-19H-E368 - Hz - Plan #1	200.0	201.0	58.3	57.7	95.143	CC, ES
Bohrer 2C-19H-E368 - Hz - Plan #1	800.0	796.9	93.5	90.7	34.010	SF
Bohrer 2D-19H-E368 - Hz - Plan #1	200.0	201.0	51.0	50.4	83.250	CC, ES
Bohrer 2D-19H-E368 - Hz - Plan #1	800.0	799.4	80.7	78.0	29.521	SF
Bohrer 2E-19H-E368 - Hz - Plan #1	200.0	201.0	40.1	39.5	65.411	CC, ES
Bohrer 2E-19H-E368 - Hz - Plan #1	800.0	800.7	68.0	65.3	25.008	SF
Bohrer 2F-19H-E368 - Hz - Plan #1	200.0	201.0	29.1	28.5	47.571	CC, ES
Bohrer 2F-19H-E368 - Hz - Plan #1	1,000.0	1,002.6	67.6	64.1	19.383	SF
Bohrer 2G-19H-E368 - Hz - Plan #1	200.0	201.0	21.9	21.2	35.679	CC, ES
Bohrer 2G-19H-E368 - Hz - Plan #1	1,600.0	1,606.2	83.5	77.0	12.758	SF
Bohrer 2H-19H-E368 - Hz - Plan #1	200.0	200.0	10.9	10.3	17.890	CC, ES
Bohrer 2H-19H-E368 - Hz - Plan #1	11,628.6	11,760.2	429.8	240.6	2.271	SF
BOHRER TRUST 21-19 (EXISTING) - ENCANA WELL - S						Out of range
BOYD 3-19 (EXISTING) - ENCANA WELL - SURVEYS						Out of range
Boyd 3B-19H-M368 - Hz - Plan #1	7,383.3	7,402.5	420.6	395.4	16.683	CC
Boyd 3B-19H-M368 - Hz - Plan #1	11,628.6	11,664.4	420.8	237.2	2.292	ES, SF
Boyd 3C-19H-M368 - Hz - Plan #1						Out of range
Boyd 3D-19H-M368 - Hz - Plan #1						Out of range
Boyd 3E-19H-M368 - Hz - Plan #1						Out of range
Boyd 3F-19H-M368 - Hz - Plan #1						Out of range
Boyd 3G-19H-M368 - Hz - Plan #1						Out of range

Cathedral Energy Services

Anticollision Report

Company:	EnCana Oil & Gas (USA) Inc	Local Co-ordinate Reference:	Well Bohrer 2I-19H-E368
Project:	DJ Wattenberg	TVD Reference:	WELL @ 5083.0ft (Original Well Elev)
Reference Site:	S19-T3N-R68W (Bohrer)	MD Reference:	WELL @ 5083.0ft (Original Well Elev)
Site Error:	0.0ft	North Reference:	True
Reference Well:	Bohrer 2I-19H-E368	Survey Calculation Method:	Minimum Curvature
Well Error:	0.0ft	Output errors are at	2.00 sigma
Reference Wellbore	Hz	Database:	USA EDM 5000 Multi Users DB
Reference Design:	Plan #1	Offset TVD Reference:	Offset Datum

Offset Design													S19-T3N-R68W (Bohrer) - Bohrer 2A-19H-E368 - Hz - Plan #1		Offset Site Error:		0.0 ft
Survey Program: 0-Geolink MWD													Offset Well Error:		0.0 ft		
Reference		Offset		Semi Major Axis			Distance							Warning			
Measured Depth (ft)	Vertical Depth (ft)	Measured Depth (ft)	Vertical Depth (ft)	Reference (ft)	Offset (ft)	Highside Toolface (°)	Offset Wellbore Centre		Between Centres (ft)	Between Ellipses (ft)	Total Uncertainty Axis	Separation Factor					
							+N/-S (ft)	+E/-W (ft)									
0.0	0.0	2.0	2.0	0.0	0.0	0.00	80.1	0.0	80.1								
100.0	100.0	102.0	102.0	0.1	0.1	0.00	80.1	0.0	80.1	79.9	0.27	302.094					
166.0	166.0	168.0	168.0	0.2	0.2	0.00	80.1	0.0	80.1	79.6	0.50	161.700	CC				
200.0	200.0	202.0	202.0	0.3	0.3	0.00	80.1	0.0	80.1	79.5	0.61	130.457	ES				
300.0	300.0	300.8	300.8	0.5	0.5	151.06	80.9	-0.5	81.7	80.7	0.96	84.895					
400.0	400.0	400.0	400.0	0.7	0.7	150.91	83.0	-1.9	86.1	84.8	1.31	65.639					
500.0	499.9	497.9	497.8	0.8	0.8	150.70	86.6	-4.3	93.5	91.9	1.66	56.210					
600.0	599.7	596.0	595.7	1.0	1.0	150.46	91.5	-7.6	103.9	101.9	2.02	51.381					
700.0	699.4	693.5	692.9	1.3	1.2	150.21	97.8	-11.8	117.2	114.8	2.39	49.098					
800.0	798.9	790.4	789.4	1.5	1.5	149.96	105.4	-16.9	133.4	130.6	2.76	48.335	SF				
900.0	898.3	886.6	884.9	1.7	1.7	149.73	114.3	-22.9	152.5	149.3	3.14	48.530					
1,000.0	997.4	981.9	979.4	2.0	2.0	149.51	124.4	-29.7	174.4	170.8	3.53	49.349					
1,100.0	1,096.3	1,076.2	1,072.8	2.3	2.3	149.30	135.7	-37.2	199.1	195.2	3.94	50.579					
1,200.0	1,194.9	1,169.4	1,164.8	2.6	2.5	149.10	148.1	-45.5	226.6	222.3	4.35	52.078					
1,300.0	1,293.3	1,261.4	1,255.4	3.0	2.9	148.92	161.6	-54.6	256.9	252.1	4.78	53.752					
1,400.0	1,391.2	1,352.2	1,344.4	3.4	3.2	148.73	176.1	-64.3	289.8	284.6	5.22	55.534					
1,500.0	1,488.9	1,441.6	1,431.9	3.8	3.5	148.55	191.5	-74.6	325.4	319.8	5.67	57.375					
1,600.0	1,586.1	1,529.6	1,517.7	4.2	3.9	148.38	207.7	-85.5	363.6	357.5	6.14	59.246					
1,700.0	1,682.9	1,617.6	1,603.2	4.7	4.3	148.20	225.0	-97.1	404.3	397.7	6.62	61.089					
1,800.0	1,779.3	1,708.2	1,691.2	5.2	4.7	148.11	243.1	-109.2	446.6	439.5	7.12	62.761					
1,900.0	1,875.2	1,798.3	1,778.6	5.7	5.1	148.23	261.0	-121.2	490.1	482.4	7.63	64.249					

Cathedral Energy Services

Anticollision Report

Company:	EnCana Oil & Gas (USA) Inc	Local Co-ordinate Reference:	Well Bohrer 2I-19H-E368
Project:	DJ Wattenberg	TVD Reference:	WELL @ 5083.0ft (Original Well Elev)
Reference Site:	S19-T3N-R68W (Bohrer)	MD Reference:	WELL @ 5083.0ft (Original Well Elev)
Site Error:	0.0ft	North Reference:	True
Reference Well:	Bohrer 2I-19H-E368	Survey Calculation Method:	Minimum Curvature
Well Error:	0.0ft	Output errors are at	2.00 sigma
Reference Wellbore	Hz	Database:	USA EDM 5000 Multi Users DB
Reference Design:	Plan #1	Offset TVD Reference:	Offset Datum

Offset Design S19-T3N-R68W (Bohrer) - Bohrer 2B-19H-E368 - Hz - Plan #1												Offset Site Error:	0.0 ft
Survey Program: 0-Geolink MWD												Offset Well Error:	0.0 ft
Reference		Offset		Semi Major Axis			Distance					Separation Factor	Warning
Measured Depth (ft)	Vertical Depth (ft)	Measured Depth (ft)	Vertical Depth (ft)	Reference (ft)	Offset (ft)	Highside Toolface (°)	Offset Wellbore Centre +N/-S (ft)	+E/-W (ft)	Between Centres (ft)	Between Ellipses (ft)	Total Uncertainty Axis		
0.0	0.0	2.0	2.0	0.0	0.0	0.00	69.2	0.0	69.2				
100.0	100.0	102.0	102.0	0.1	0.1	0.00	69.2	0.0	69.2	68.9	0.27	260.884	
200.0	200.0	202.0	202.0	0.3	0.3	0.00	69.2	0.0	69.2	68.6	0.61	112.654 CC, ES	
300.0	300.0	302.0	302.0	0.5	0.5	151.46	69.2	0.0	70.0	69.0	0.96	72.623	
400.0	400.0	401.0	401.0	0.7	0.7	151.94	69.9	-0.6	72.9	71.6	1.31	55.580	
500.0	499.9	500.0	500.0	0.8	0.8	152.09	71.8	-2.4	78.7	77.0	1.66	47.290	
600.0	599.7	598.5	598.4	1.0	1.0	151.95	74.9	-5.3	87.2	85.2	2.02	43.169	
700.0	699.4	696.7	696.4	1.3	1.2	151.61	79.3	-9.3	98.5	96.1	2.38	41.320	
800.0	798.9	794.4	793.8	1.5	1.4	151.15	84.9	-14.5	112.6	109.8	2.76	40.825 SF	
900.0	898.3	891.5	890.4	1.7	1.6	150.64	91.6	-20.7	129.4	126.2	3.14	41.178	
1,000.0	997.4	987.8	986.2	2.0	1.9	150.11	99.5	-28.0	148.9	145.4	3.54	42.072	
1,100.0	1,096.3	1,083.3	1,080.9	2.3	2.1	149.60	108.5	-36.3	171.1	167.2	3.95	43.316	
1,200.0	1,194.9	1,177.9	1,174.5	2.6	2.4	149.11	118.5	-45.6	196.1	191.7	4.38	44.781	
1,300.0	1,293.3	1,271.5	1,266.8	3.0	2.7	148.65	129.6	-55.8	223.6	218.8	4.82	46.378	
1,400.0	1,391.2	1,363.9	1,357.8	3.4	3.0	148.21	141.5	-66.8	253.8	248.5	5.28	48.051	
1,500.0	1,488.9	1,457.4	1,449.6	3.8	3.3	147.84	154.5	-78.8	286.2	280.5	5.76	49.711	
1,600.0	1,586.1	1,551.4	1,541.9	4.2	3.7	147.67	167.7	-91.0	320.2	313.9	6.25	51.247	
1,700.0	1,682.9	1,645.0	1,633.8	4.7	4.0	147.64	180.7	-103.0	355.5	348.7	6.75	52.693	
1,800.0	1,779.3	1,738.0	1,725.1	5.2	4.3	147.71	193.7	-115.0	392.2	384.9	7.25	54.067	
1,900.0	1,875.2	1,830.5	1,815.9	5.7	4.7	147.96	206.6	-127.0	430.1	422.3	7.77	55.329	
2,000.0	1,971.1	1,922.9	1,906.7	6.2	5.0	148.27	219.5	-138.9	468.1	459.8	8.30	56.388	

Cathedral Energy Services

Anticollision Report

Company:	EnCana Oil & Gas (USA) Inc	Local Co-ordinate Reference:	Well Bohrer 2I-19H-E368
Project:	DJ Wattenberg	TVD Reference:	WELL @ 5083.0ft (Original Well Elev)
Reference Site:	S19-T3N-R68W (Bohrer)	MD Reference:	WELL @ 5083.0ft (Original Well Elev)
Site Error:	0.0ft	North Reference:	True
Reference Well:	Bohrer 2I-19H-E368	Survey Calculation Method:	Minimum Curvature
Well Error:	0.0ft	Output errors are at	2.00 sigma
Reference Wellbore	Hz	Database:	USA EDM 5000 Multi Users DB
Reference Design:	Plan #1	Offset TVD Reference:	Offset Datum

Offset Design S19-T3N-R68W (Bohrer) - Bohrer 2C-19H-E368 - Hz - Plan #1													Offset Site Error:	0.0 ft
Survey Program: 0-Geolink MWD													Offset Well Error:	0.0 ft
Reference		Offset		Semi Major Axis			Distance				Total		Warning	
Measured Depth (ft)	Vertical Depth (ft)	Measured Depth (ft)	Vertical Depth (ft)	Reference (ft)	Offset (ft)	Highside Toolface (°)	Offset Wellbore Centre +N/-S (ft)	+E/-W (ft)	Between Centres (ft)	Between Ellipses (ft)	Uncertainty Axis	Separation Factor		
0.0	0.0	1.0	1.0	0.0	0.0	0.00	58.3	0.0	58.3					
100.0	100.0	101.0	101.0	0.1	0.1	0.00	58.3	0.0	58.3	58.0	0.26	221.160		
200.0	200.0	201.0	201.0	0.3	0.3	0.00	58.3	0.0	58.3	57.7	0.61	95.143 CC, ES		
300.0	300.0	301.0	301.0	0.5	0.5	151.52	58.3	0.0	59.1	58.1	0.96	61.395		
400.0	400.0	401.0	401.0	0.7	0.7	152.68	58.3	0.0	61.4	60.1	1.31	46.784		
500.0	499.9	500.0	500.0	0.8	0.8	153.74	58.8	-0.7	65.7	64.1	1.66	39.554		
600.0	599.7	599.4	599.4	1.0	1.0	154.07	60.2	-2.9	72.5	70.5	2.02	35.978		
700.0	699.4	698.3	698.2	1.3	1.2	153.81	62.6	-6.5	81.8	79.4	2.38	34.406		
800.0	798.9	796.9	796.5	1.5	1.4	153.16	65.9	-11.5	93.5	90.7	2.75	34.010 SF		
900.0	898.3	894.9	894.3	1.7	1.6	152.29	70.1	-17.8	107.6	104.5	3.13	34.340		
1,000.0	997.4	992.5	991.4	2.0	1.8	151.31	75.2	-25.5	124.2	120.6	3.54	35.128		
1,100.0	1,096.3	1,089.4	1,087.7	2.3	2.0	150.32	81.1	-34.6	143.2	139.2	3.96	36.201		
1,200.0	1,194.9	1,185.6	1,183.1	2.6	2.3	149.35	87.9	-44.9	164.7	160.3	4.40	37.445		
1,300.0	1,293.3	1,281.0	1,277.5	3.0	2.6	148.44	95.5	-56.4	188.5	183.7	4.86	38.782		
1,400.0	1,391.2	1,376.2	1,371.5	3.4	2.8	147.60	104.0	-69.1	214.8	209.4	5.35	40.174		
1,500.0	1,488.9	1,472.3	1,466.3	3.8	3.1	147.07	112.6	-82.2	242.6	236.8	5.85	41.494		
1,600.0	1,586.1	1,567.9	1,560.6	4.2	3.4	146.81	121.2	-95.3	271.8	265.5	6.36	42.758		
1,700.0	1,682.9	1,663.1	1,654.5	4.7	3.7	146.75	129.8	-108.3	302.5	295.6	6.88	43.975		
1,800.0	1,779.3	1,757.8	1,748.0	5.2	4.0	146.84	138.3	-121.2	334.5	327.1	7.41	45.157		
1,900.0	1,875.2	1,852.1	1,841.0	5.7	4.4	147.10	146.8	-134.0	367.7	359.8	7.95	46.273		
2,000.0	1,971.1	1,946.4	1,934.0	6.2	4.7	147.41	155.3	-146.9	401.1	392.6	8.49	47.218		
2,100.0	2,067.1	2,040.6	2,027.0	6.7	5.0	147.68	163.8	-159.7	434.5	425.4	9.04	48.037		
2,200.0	2,163.0	2,134.9	2,120.0	7.2	5.3	147.90	172.3	-172.6	467.9	458.3	9.60	48.752		

Cathedral Energy Services

Anticollision Report

Company:	EnCana Oil & Gas (USA) Inc	Local Co-ordinate Reference:	Well Bohrer 2I-19H-E368
Project:	DJ Wattenberg	TVD Reference:	WELL @ 5083.0ft (Original Well Elev)
Reference Site:	S19-T3N-R68W (Bohrer)	MD Reference:	WELL @ 5083.0ft (Original Well Elev)
Site Error:	0.0ft	North Reference:	True
Reference Well:	Bohrer 2I-19H-E368	Survey Calculation Method:	Minimum Curvature
Well Error:	0.0ft	Output errors are at	2.00 sigma
Reference Wellbore	Hz	Database:	USA EDM 5000 Multi Users DB
Reference Design:	Plan #1	Offset TVD Reference:	Offset Datum

Offset Design S19-T3N-R68W (Bohrer) - Bohrer 2D-19H-E368 - Hz - Plan #1													Offset Site Error:	0.0 ft
Survey Program: 0-Geolink MWD													Offset Well Error:	0.0 ft
Reference		Offset		Semi Major Axis		Highside Toolface (°)	Distance		Total Uncertainty Axis	Separation Factor	Warning			
Measured Depth (ft)	Vertical Depth (ft)	Measured Depth (ft)	Vertical Depth (ft)	Reference (ft)	Offset (ft)		Offset Wellbore Centre +N/-S (ft)	+E/-W (ft)						
0.0	0.0	1.0	1.0	0.0	0.0	0.00	51.0	0.0	51.0					
100.0	100.0	101.0	101.0	0.1	0.1	0.00	51.0	0.0	51.0	50.7	0.26	193.515		
200.0	200.0	201.0	201.0	0.3	0.3	0.00	51.0	0.0	51.0	50.4	0.61	83.250 CC, ES		
300.0	300.0	301.0	301.0	0.5	0.5	151.58	51.0	0.0	51.8	50.8	0.96	53.821		
400.0	400.0	401.0	401.0	0.7	0.7	152.89	51.0	0.0	54.1	52.8	1.31	41.232		
500.0	499.9	500.9	500.9	0.8	0.8	154.84	51.0	0.0	58.0	56.3	1.66	34.891		
600.0	599.7	600.5	600.5	1.0	1.0	156.36	51.2	-0.9	63.7	61.7	2.01	31.632		
700.0	699.4	700.0	700.0	1.3	1.2	156.78	51.8	-3.4	71.3	68.9	2.37	30.083		
800.0	798.9	799.4	799.3	1.5	1.4	156.36	52.9	-7.6	80.7	78.0	2.73	29.521 SF		
900.0	898.3	898.5	898.2	1.7	1.6	155.40	54.3	-13.4	92.0	88.9	3.11	29.563		
1,000.0	997.4	997.3	996.7	2.0	1.8	154.11	56.2	-20.9	105.2	101.7	3.51	29.979		
1,100.0	1,096.3	1,095.8	1,094.7	2.3	2.0	152.66	58.5	-30.0	120.3	116.4	3.93	30.620		
1,200.0	1,194.9	1,193.8	1,192.1	2.6	2.2	151.17	61.1	-40.7	137.4	133.0	4.38	31.390		
1,300.0	1,293.3	1,291.3	1,288.8	3.0	2.5	149.70	64.2	-52.9	156.4	151.6	4.85	32.236		
1,400.0	1,391.2	1,389.1	1,385.7	3.4	2.7	148.60	67.4	-65.8	177.2	171.8	5.35	33.134		
1,500.0	1,488.9	1,486.6	1,482.3	3.8	3.0	147.97	70.5	-78.7	199.4	193.6	5.85	34.067		
1,600.0	1,586.1	1,583.7	1,578.5	4.2	3.2	147.67	73.7	-91.5	223.1	216.7	6.37	35.025		
1,700.0	1,682.9	1,680.5	1,674.4	4.7	3.5	147.63	76.9	-104.2	248.2	241.3	6.89	36.006		
1,800.0	1,779.3	1,776.9	1,769.9	5.2	3.8	147.76	80.0	-116.9	274.8	267.3	7.42	37.008		
1,900.0	1,875.2	1,873.0	1,865.1	5.7	4.1	148.07	83.2	-129.6	302.5	294.6	7.96	37.997		
2,000.0	1,971.1	1,969.0	1,960.2	6.2	4.3	148.41	86.3	-142.2	330.4	321.9	8.51	38.848		
2,100.0	2,067.1	2,065.0	2,055.3	6.7	4.6	148.69	89.5	-154.9	358.3	349.3	9.05	39.588		
2,200.0	2,163.0	2,161.0	2,150.5	7.2	4.9	148.93	92.6	-167.5	386.3	376.7	9.60	40.235		
2,300.0	2,258.9	2,257.0	2,245.6	7.7	5.2	149.14	95.8	-180.2	414.2	404.1	10.15	40.807		
2,400.0	2,354.8	2,353.0	2,340.7	8.2	5.4	149.32	98.9	-192.8	442.2	431.4	10.70	41.316		
2,500.0	2,450.7	2,449.0	2,435.8	8.8	5.7	149.48	102.0	-205.5	470.1	458.8	11.25	41.770		
2,600.0	2,546.6	2,545.1	2,530.9	9.3	6.0	149.63	105.2	-218.1	498.0	486.2	11.81	42.179		

Cathedral Energy Services

Anticollision Report

Company:	EnCana Oil & Gas (USA) Inc	Local Co-ordinate Reference:	Well Bohrer 2I-19H-E368
Project:	DJ Wattenberg	TVD Reference:	WELL @ 5083.0ft (Original Well Elev)
Reference Site:	S19-T3N-R68W (Bohrer)	MD Reference:	WELL @ 5083.0ft (Original Well Elev)
Site Error:	0.0ft	North Reference:	True
Reference Well:	Bohrer 2I-19H-E368	Survey Calculation Method:	Minimum Curvature
Well Error:	0.0ft	Output errors are at	2.00 sigma
Reference Wellbore	Hz	Database:	USA EDM 5000 Multi Users DB
Reference Design:	Plan #1	Offset TVD Reference:	Offset Datum

Offset Design S19-T3N-R68W (Bohrer) - Bohrer 2E-19H-E368 - Hz - Plan #1													Offset Site Error:	0.0 ft
Survey Program: 0-Geolink MWD													Offset Well Error:	0.0 ft
Reference		Offset		Semi Major Axis			Distance				Total	Separation	Warning	
Measured Depth (ft)	Vertical Depth (ft)	Measured Depth (ft)	Vertical Depth (ft)	Reference (ft)	Offset (ft)	Highside Toolface (°)	Offset Wellbore Centre +N/-S (ft)	+E/-W (ft)	Between Centres (ft)	Between Ellipses (ft)	Uncertainty Axis	Factor		
0.0	0.0	1.0	1.0	0.0	0.0	0.00	40.1	0.0	40.1					
100.0	100.0	101.0	101.0	0.1	0.1	0.00	40.1	0.0	40.1	39.8	0.26	152.047		
200.0	200.0	201.0	201.0	0.3	0.3	0.00	40.1	0.0	40.1	39.5	0.61	65.411 CC, ES		
300.0	300.0	301.0	301.0	0.5	0.5	151.70	40.1	0.0	40.8	39.9	0.96	42.459		
400.0	400.0	401.0	401.0	0.7	0.7	153.34	40.1	0.0	43.2	41.8	1.31	32.906		
500.0	499.9	500.9	500.9	0.8	0.8	155.71	40.1	0.0	47.1	45.4	1.66	28.338		
600.0	599.7	600.7	600.7	1.0	1.0	158.42	40.1	0.0	52.7	50.7	2.01	26.198		
700.0	699.4	700.7	700.7	1.3	1.2	160.35	39.9	-0.9	59.8	57.4	2.36	25.297		
800.0	798.9	800.7	800.7	1.5	1.4	160.94	39.5	-3.5	68.0	65.3	2.72	25.008 SF		
900.0	898.3	900.7	900.6	1.7	1.5	160.59	38.8	-7.8	77.3	74.2	3.08	25.072		
1,000.0	997.4	1,000.6	1,000.3	2.0	1.7	159.60	37.8	-13.8	87.7	84.2	3.46	25.342		
1,100.0	1,096.3	1,100.4	1,099.8	2.3	1.9	158.21	36.6	-21.6	99.2	95.3	3.86	25.726		
1,200.0	1,194.9	1,200.0	1,198.9	2.6	2.1	156.58	35.1	-31.0	111.9	107.6	4.28	26.159		
1,300.0	1,293.3	1,299.5	1,297.8	3.0	2.4	154.83	33.3	-42.1	125.8	121.1	4.73	26.595		
1,400.0	1,391.2	1,398.8	1,396.2	3.4	2.6	153.04	31.2	-54.9	141.0	135.8	5.22	27.003		
1,500.0	1,488.9	1,497.4	1,493.8	3.8	2.9	151.46	29.0	-68.7	157.6	151.9	5.74	27.461		
1,600.0	1,586.1	1,595.7	1,591.1	4.2	3.2	150.43	26.7	-82.5	175.8	169.5	6.27	28.031		
1,700.0	1,682.9	1,693.7	1,688.1	4.7	3.4	149.83	24.5	-96.3	195.5	188.7	6.81	28.694		
1,800.0	1,779.3	1,791.4	1,784.9	5.2	3.7	149.55	22.3	-110.1	216.7	209.3	7.36	29.434		
1,900.0	1,875.2	1,888.9	1,881.3	5.7	4.0	149.55	20.1	-123.8	239.1	231.2	7.92	30.206		
2,000.0	1,971.1	1,986.3	1,977.7	6.2	4.3	149.61	17.8	-137.5	261.7	253.2	8.48	30.866		
2,100.0	2,067.1	2,083.7	2,074.2	6.7	4.6	149.65	15.6	-151.2	284.3	275.2	9.04	31.431		
2,200.0	2,163.0	2,181.1	2,170.6	7.2	4.9	149.70	13.4	-164.9	306.9	297.3	9.61	31.919		
2,300.0	2,258.9	2,278.6	2,267.0	7.7	5.1	149.73	11.2	-178.6	329.5	319.3	10.19	32.344		
2,400.0	2,354.8	2,376.0	2,363.4	8.2	5.4	149.76	9.0	-192.3	352.0	341.3	10.76	32.717		
2,500.0	2,450.7	2,473.4	2,459.8	8.8	5.7	149.79	6.8	-206.0	374.6	363.3	11.34	33.047		
2,600.0	2,546.6	2,570.8	2,556.3	9.3	6.0	149.82	4.5	-219.7	397.2	385.3	11.91	33.340		
2,700.0	2,642.5	2,668.2	2,652.7	9.8	6.3	149.84	2.3	-233.4	419.8	407.3	12.49	33.603		
2,800.0	2,738.4	2,765.6	2,749.1	10.3	6.6	149.86	0.1	-247.1	442.4	429.3	13.07	33.839		
2,900.0	2,834.3	2,863.1	2,845.5	10.8	6.9	149.88	-2.1	-260.8	465.0	451.3	13.65	34.053		
3,000.0	2,930.2	2,960.5	2,942.0	11.4	7.2	149.89	-4.3	-274.5	487.6	473.3	14.24	34.247		

Cathedral Energy Services

Anticollision Report

Company:	EnCana Oil & Gas (USA) Inc	Local Co-ordinate Reference:	Well Bohrer 2I-19H-E368
Project:	DJ Wattenberg	TVD Reference:	WELL @ 5083.0ft (Original Well Elev)
Reference Site:	S19-T3N-R68W (Bohrer)	MD Reference:	WELL @ 5083.0ft (Original Well Elev)
Site Error:	0.0ft	North Reference:	True
Reference Well:	Bohrer 2I-19H-E368	Survey Calculation Method:	Minimum Curvature
Well Error:	0.0ft	Output errors are at	2.00 sigma
Reference Wellbore	Hz	Database:	USA EDM 5000 Multi Users DB
Reference Design:	Plan #1	Offset TVD Reference:	Offset Datum

Offset Design S19-T3N-R68W (Bohrer) - Bohrer 2F-19H-E368 - Hz - Plan #1													Offset Site Error:	0.0 ft
Survey Program: 0-Geolink MWD													Offset Well Error:	0.0 ft
Reference		Offset		Semi Major Axis		Highside Toolface (°)	Distance		Total Uncertainty Axis	Separation Factor	Warning			
Measured Depth (ft)	Vertical Depth (ft)	Measured Depth (ft)	Vertical Depth (ft)	Reference (ft)	Offset (ft)		Offset Wellbore Centre +N/-S (ft)	+E/-W (ft)						
0.0	0.0	1.0	1.0	0.0	0.0	0.00	29.1	0.0	29.1					
100.0	100.0	101.0	101.0	0.1	0.1	0.00	29.1	0.0	29.1	28.9	0.26	110.580		
200.0	200.0	201.0	201.0	0.3	0.3	0.00	29.1	0.0	29.1	28.5	0.61	47.571 CC, ES		
300.0	300.0	301.0	301.0	0.5	0.5	151.92	29.1	0.0	29.9	28.9	0.96	31.097		
400.0	400.0	401.0	401.0	0.7	0.7	154.10	29.1	0.0	32.2	30.9	1.31	24.584		
500.0	499.9	500.9	500.9	0.8	0.8	157.10	29.1	0.0	36.2	34.6	1.66	21.796		
600.0	599.7	601.1	601.1	1.0	1.0	159.38	28.7	-0.8	41.4	39.3	2.01	20.543		
700.0	699.4	701.4	701.4	1.3	1.2	160.20	27.4	-3.1	47.1	44.7	2.37	19.887		
800.0	798.9	801.8	801.7	1.5	1.4	159.99	25.2	-6.9	53.4	50.6	2.73	19.558		
900.0	898.3	902.2	901.8	1.7	1.6	159.09	22.1	-12.3	60.2	57.1	3.10	19.417		
1,000.0	997.4	1,002.6	1,001.9	2.0	1.8	157.72	18.2	-19.1	67.6	64.1	3.49	19.383 SF		
1,100.0	1,096.3	1,103.0	1,101.8	2.3	2.0	156.05	13.4	-27.5	75.6	71.7	3.90	19.401		
1,200.0	1,194.9	1,203.3	1,201.6	2.6	2.2	154.20	7.8	-37.4	84.3	80.0	4.34	19.433		
1,300.0	1,293.3	1,303.7	1,301.0	3.0	2.5	152.26	1.3	-48.9	93.7	88.9	4.82	19.455		
1,400.0	1,391.2	1,403.8	1,400.1	3.4	2.8	150.31	-6.1	-61.8	103.8	98.5	5.33	19.464		
1,500.0	1,488.9	1,503.1	1,498.2	3.8	3.1	148.91	-13.7	-75.0	115.3	109.4	5.87	19.631		
1,600.0	1,586.1	1,602.3	1,596.2	4.2	3.4	148.15	-21.2	-88.3	128.3	121.8	6.42	19.979		
1,700.0	1,682.9	1,701.2	1,693.9	4.7	3.7	147.89	-28.8	-101.5	142.7	135.7	6.97	20.475		
1,800.0	1,779.3	1,799.9	1,791.5	5.2	4.0	148.00	-36.3	-114.7	158.6	151.1	7.52	21.095		
1,900.0	1,875.2	1,898.4	1,888.8	5.7	4.3	148.37	-43.8	-127.8	175.8	167.7	8.07	21.790		
2,000.0	1,971.1	1,996.9	1,986.1	6.2	4.6	148.74	-51.3	-141.0	193.1	184.5	8.62	22.403		
2,100.0	2,067.1	2,095.4	2,083.4	6.7	4.9	149.05	-58.8	-154.2	210.4	201.2	9.17	22.937		
2,200.0	2,163.0	2,193.9	2,180.7	7.2	5.2	149.31	-66.3	-167.3	227.7	218.0	9.73	23.407		
2,300.0	2,258.9	2,292.4	2,278.1	7.7	5.5	149.54	-73.9	-180.5	245.1	234.8	10.29	23.822		
2,400.0	2,354.8	2,390.8	2,375.4	8.2	5.8	149.73	-81.4	-193.6	262.4	251.5	10.85	24.192		
2,500.0	2,450.7	2,489.3	2,472.7	8.8	6.1	149.90	-88.9	-206.8	279.7	268.3	11.41	24.523		
2,600.0	2,546.6	2,587.8	2,570.0	9.3	6.4	150.06	-96.4	-219.9	297.1	285.1	11.97	24.821		
2,700.0	2,642.5	2,686.3	2,667.3	9.8	6.7	150.19	-103.9	-233.1	314.4	301.9	12.53	25.091		
2,800.0	2,738.4	2,784.8	2,764.6	10.3	7.0	150.31	-111.4	-246.3	331.7	318.6	13.09	25.337		
2,900.0	2,834.3	2,883.3	2,861.9	10.8	7.3	150.42	-118.9	-259.4	349.1	335.4	13.66	25.561		
3,000.0	2,930.2	2,981.7	2,959.2	11.4	7.7	150.52	-126.4	-272.6	366.4	352.2	14.22	25.766		
3,100.0	3,026.1	3,080.2	3,056.5	11.9	8.0	150.61	-133.9	-285.7	383.8	369.0	14.79	25.955		
3,200.0	3,122.0	3,178.7	3,153.8	12.4	8.3	150.69	-141.4	-298.9	401.1	385.8	15.35	26.129		
3,300.0	3,217.9	3,277.2	3,251.2	12.9	8.6	150.76	-148.9	-312.0	418.4	402.5	15.92	26.291		
3,400.0	3,313.8	3,375.7	3,348.5	13.5	8.9	150.83	-156.5	-325.2	435.8	419.3	16.48	26.440		
3,500.0	3,409.7	3,474.2	3,445.8	14.0	9.2	150.89	-164.0	-338.4	453.1	436.1	17.05	26.580		
3,600.0	3,505.6	3,572.6	3,543.1	14.5	9.5	150.95	-171.5	-351.5	470.5	452.9	17.61	26.710		
3,700.0	3,601.6	3,671.1	3,640.4	15.0	9.9	151.01	-179.0	-364.7	487.8	469.6	18.18	26.831		

Cathedral Energy Services

Anticollision Report

Company:	EnCana Oil & Gas (USA) Inc	Local Co-ordinate Reference:	Well Bohrer 2I-19H-E368
Project:	DJ Wattenberg	TVD Reference:	WELL @ 5083.0ft (Original Well Elev)
Reference Site:	S19-T3N-R68W (Bohrer)	MD Reference:	WELL @ 5083.0ft (Original Well Elev)
Site Error:	0.0ft	North Reference:	True
Reference Well:	Bohrer 2I-19H-E368	Survey Calculation Method:	Minimum Curvature
Well Error:	0.0ft	Output errors are at	2.00 sigma
Reference Wellbore	Hz	Database:	USA EDM 5000 Multi Users DB
Reference Design:	Plan #1	Offset TVD Reference:	Offset Datum

Offset Design S19-T3N-R68W (Bohrer) - Bohrer 2G-19H-E368 - Hz - Plan #1													Offset Site Error:	0.0 ft
Survey Program: O-Geolink MWD													Offset Well Error:	0.0 ft
Reference		Offset		Semi Major Axis		Highside Toolface (°)	Distance		Total Uncertainty Axis	Separation Factor	Warning			
Measured Depth (ft)	Vertical Depth (ft)	Measured Depth (ft)	Vertical Depth (ft)	Reference (ft)	Offset (ft)		Offset Wellbore Centre +N/-S (ft)	+E/-W (ft)						
0.0	0.0	1.0	1.0	0.0	0.0	0.00	21.9	0.0	21.9					
100.0	100.0	101.0	101.0	0.1	0.1	0.00	21.9	0.0	21.9	21.6	0.26	82.935		
200.0	200.0	201.0	201.0	0.3	0.3	0.00	21.9	0.0	21.9	21.2	0.61	35.679 CC, ES		
300.0	300.0	301.0	301.0	0.5	0.5	152.18	21.9	0.0	22.6	21.7	0.96	23.523		
400.0	400.0	401.0	401.0	0.7	0.7	154.98	21.9	0.0	25.0	23.7	1.31	19.040		
500.0	499.9	501.3	501.3	0.8	0.8	157.51	21.2	-0.6	28.3	26.6	1.66	17.013		
600.0	599.7	601.6	601.6	1.0	1.0	158.71	19.4	-2.5	31.9	29.9	2.02	15.815		
700.0	699.4	702.0	701.9	1.3	1.2	158.96	16.3	-5.7	35.7	33.4	2.37	15.052		
800.0	798.9	802.4	802.1	1.5	1.4	158.51	11.9	-10.1	39.8	37.1	2.74	14.538		
900.0	898.3	902.9	902.3	1.7	1.6	157.57	6.4	-15.7	44.1	41.0	3.11	14.173		
1,000.0	997.4	1,003.4	1,002.3	2.0	1.8	156.29	-0.4	-22.6	48.7	45.2	3.51	13.897		
1,100.0	1,096.3	1,104.0	1,102.2	2.3	2.1	154.77	-8.5	-30.7	53.6	49.7	3.92	13.670		
1,200.0	1,194.9	1,204.6	1,201.9	2.6	2.3	153.09	-17.8	-40.1	58.8	54.4	4.37	13.466		
1,300.0	1,293.3	1,305.2	1,301.4	3.0	2.6	151.31	-28.3	-50.8	64.3	59.5	4.85	13.267		
1,400.0	1,391.2	1,405.8	1,400.6	3.4	2.9	149.48	-40.0	-62.7	70.2	64.8	5.37	13.063		
1,500.0	1,488.9	1,506.4	1,499.6	3.8	3.3	147.64	-52.9	-75.8	76.4	70.5	5.95	12.849		
1,600.0	1,586.1	1,606.2	1,597.5	4.2	3.6	146.23	-66.5	-89.5	83.5	77.0	6.55	12.758 SF		
1,700.0	1,682.9	1,705.9	1,695.2	4.7	4.0	145.64	-80.0	-103.2	92.1	85.0	7.14	12.892		
1,800.0	1,779.3	1,805.4	1,792.9	5.2	4.4	145.70	-93.5	-116.9	102.1	94.4	7.73	13.211		
1,900.0	1,875.2	1,904.7	1,890.4	5.7	4.7	146.19	-106.9	-130.6	113.4	105.1	8.30	13.657		
2,000.0	1,971.1	2,004.1	1,987.8	6.2	5.1	146.66	-120.4	-144.2	124.7	115.9	8.87	14.060		
2,100.0	2,067.1	2,103.4	2,085.3	6.7	5.4	147.06	-133.9	-157.9	136.1	126.7	9.45	14.411		
2,200.0	2,163.0	2,202.8	2,182.8	7.2	5.8	147.39	-147.4	-171.5	147.5	137.5	10.02	14.720		
2,300.0	2,258.9	2,302.1	2,280.3	7.7	6.2	147.67	-160.8	-185.2	159.0	148.4	10.60	14.993		
2,400.0	2,354.8	2,401.4	2,377.7	8.2	6.6	147.91	-174.3	-198.8	170.4	159.2	11.18	15.237		
2,500.0	2,450.7	2,500.8	2,475.2	8.8	6.9	148.13	-187.8	-212.5	181.8	170.0	11.76	15.456		
2,600.0	2,546.6	2,600.1	2,572.7	9.3	7.3	148.32	-201.3	-226.1	193.2	180.9	12.34	15.653		
2,700.0	2,642.5	2,699.5	2,670.2	9.8	7.7	148.49	-214.7	-239.8	204.6	191.7	12.92	15.832		
2,800.0	2,738.4	2,798.8	2,767.6	10.3	8.0	148.64	-228.2	-253.4	216.0	202.5	13.51	15.994		
2,900.0	2,834.3	2,898.2	2,865.1	10.8	8.4	148.77	-241.7	-267.1	227.5	213.4	14.09	16.143		
3,000.0	2,930.2	2,997.5	2,962.6	11.4	8.8	148.89	-255.1	-280.8	238.9	224.2	14.67	16.279		
3,100.0	3,026.1	3,096.9	3,060.1	11.9	9.2	149.01	-268.6	-294.4	250.3	235.0	15.26	16.404		
3,200.0	3,122.0	3,196.2	3,157.5	12.4	9.5	149.11	-282.1	-308.1	261.7	245.9	15.84	16.520		
3,300.0	3,217.9	3,295.5	3,255.0	12.9	9.9	149.20	-295.6	-321.7	273.1	256.7	16.43	16.627		
3,400.0	3,313.8	3,394.9	3,352.5	13.5	10.3	149.29	-309.0	-335.4	284.6	267.6	17.01	16.727		
3,500.0	3,409.7	3,494.2	3,450.0	14.0	10.7	149.36	-322.5	-349.0	296.0	278.4	17.60	16.819		
3,600.0	3,505.6	3,593.6	3,547.4	14.5	11.1	149.44	-336.0	-362.7	307.4	289.2	18.18	16.906		
3,700.0	3,601.6	3,692.9	3,644.9	15.0	11.4	149.51	-349.4	-376.3	318.8	300.1	18.77	16.986		
3,800.0	3,697.5	3,792.3	3,742.4	15.6	11.8	149.57	-362.9	-390.0	330.3	310.9	19.36	17.062		
3,900.0	3,793.4	3,891.6	3,839.9	16.1	12.2	149.63	-376.4	-403.7	341.7	321.8	19.94	17.133		
4,000.0	3,889.3	3,991.0	3,937.3	16.6	12.6	149.68	-389.9	-417.3	353.1	332.6	20.53	17.200		
4,100.0	3,985.2	4,090.3	4,034.8	17.1	12.9	149.73	-403.3	-431.0	364.6	343.4	21.12	17.263		
4,200.0	4,081.1	4,189.6	4,132.3	17.7	13.3	149.78	-416.8	-444.6	376.0	354.3	21.70	17.323		
4,300.0	4,177.0	4,289.0	4,229.8	18.2	13.7	149.83	-430.3	-458.3	387.4	365.1	22.29	17.379		
4,400.0	4,272.9	4,388.3	4,327.2	18.7	14.1	149.87	-443.7	-471.9	398.8	376.0	22.88	17.433		
4,500.0	4,368.8	4,487.7	4,424.7	19.3	14.5	149.91	-457.2	-485.6	410.3	386.8	23.47	17.483		
4,600.0	4,464.7	4,587.0	4,522.2	19.8	14.8	149.95	-470.7	-499.2	421.7	397.7	24.05	17.531		
4,700.0	4,560.6	4,686.4	4,619.7	20.3	15.2	149.99	-484.2	-512.9	433.1	408.5	24.64	17.577		
4,800.0	4,656.5	4,785.7	4,717.1	20.8	15.6	150.02	-497.6	-526.5	444.6	419.3	25.23	17.620		
4,900.0	4,752.4	4,885.0	4,814.6	21.4	16.0	150.05	-511.1	-540.2	456.0	430.2	25.82	17.662		
5,000.0	4,848.3	4,984.4	4,912.1	21.9	16.3	150.09	-524.6	-553.9	467.4	441.0	26.41	17.702		
5,100.0	4,944.2	5,083.7	5,009.6	22.4	16.7	150.12	-538.0	-567.5	478.9	451.9	26.99	17.739		

CC - Min centre to center distance or convergent point, SF - min separation factor, ES - min ellipse separation

Cathedral Energy Services

Anticollision Report

Company:	EnCana Oil & Gas (USA) Inc	Local Co-ordinate Reference:	Well Bohrer 2I-19H-E368
Project:	DJ Wattenberg	TVD Reference:	WELL @ 5083.0ft (Original Well Elev)
Reference Site:	S19-T3N-R68W (Bohrer)	MD Reference:	WELL @ 5083.0ft (Original Well Elev)
Site Error:	0.0ft	North Reference:	True
Reference Well:	Bohrer 2I-19H-E368	Survey Calculation Method:	Minimum Curvature
Well Error:	0.0ft	Output errors are at	2.00 sigma
Reference Wellbore	Hz	Database:	USA EDM 5000 Multi Users DB
Reference Design:	Plan #1	Offset TVD Reference:	Offset Datum

Offset Design S19-T3N-R68W (Bohrer) - Bohrer 2G-19H-E368 - Hz - Plan #1													Offset Site Error: 0.0 ft
Survey Program: 0-Geolink MWD													Offset Well Error: 0.0 ft
Reference		Offset		Semi Major Axis			Distance						Warning
Measured Depth	Vertical Depth	Measured Depth	Vertical Depth	Reference	Offset	Highside Toolface	Offset Wellbore Centre +N/-S	+E/-W	Between Centres	Between Ellipses	Total Uncertainty Axis	Separation Factor	
(ft)	(ft)	(ft)	(ft)	(ft)	(ft)	(°)	(ft)	(ft)	(ft)	(ft)			
5,200.0	5,040.2	5,183.1	5,107.0	22.9	17.1	150.14	-551.5	-581.2	490.3	462.7	27.58	17.775	

Cathedral Energy Services

Anticollision Report

Company:	EnCana Oil & Gas (USA) Inc	Local Co-ordinate Reference:	Well Bohrer 2I-19H-E368
Project:	DJ Wattenberg	TVD Reference:	WELL @ 5083.0ft (Original Well Elev)
Reference Site:	S19-T3N-R68W (Bohrer)	MD Reference:	WELL @ 5083.0ft (Original Well Elev)
Site Error:	0.0ft	North Reference:	True
Reference Well:	Bohrer 2I-19H-E368	Survey Calculation Method:	Minimum Curvature
Well Error:	0.0ft	Output errors are at	2.00 sigma
Reference Wellbore	Hz	Database:	USA EDM 5000 Multi Users DB
Reference Design:	Plan #1	Offset TVD Reference:	Offset Datum

Offset Design S19-T3N-R68W (Bohrer) - Bohrer 2H-19H-E368 - Hz - Plan #1													Offset Site Error:	0.0 ft
Survey Program: O-Geolink MWD													Offset Well Error:	0.0 ft
Reference		Offset		Semi Major Axis			Distance				Total Uncertainty Axis	Separation Factor	Warning	
Measured Depth (ft)	Vertical Depth (ft)	Measured Depth (ft)	Vertical Depth (ft)	Reference (ft)	Offset (ft)	Highside Toolface (°)	Offset Wellbore Centre +N/-S (ft)	+E/-W (ft)	Between Centres (ft)	Between Ellipses (ft)				
0.0	0.0	0.0	0.0	0.0	0.0	0.00	10.9	0.0	10.9					
100.0	100.0	100.0	100.0	0.1	0.1	0.00	10.9	0.0	10.9	10.7	0.26	41.744		
200.0	200.0	200.0	200.0	0.3	0.3	0.00	10.9	0.0	10.9	10.3	0.61	17.890 CC, ES		
300.0	300.0	300.0	300.0	0.5	0.5	153.18	10.9	0.0	11.7	10.7	0.96	12.187		
400.0	400.0	400.2	400.2	0.7	0.7	156.17	10.2	-0.5	13.3	12.0	1.31	10.172		
500.0	499.9	500.4	500.3	0.8	0.8	157.78	8.1	-2.0	15.1	13.4	1.66	9.067		
600.0	599.7	600.6	600.5	1.0	1.0	158.41	4.5	-4.6	16.9	14.9	2.02	8.382		
700.0	699.4	700.8	700.5	1.3	1.2	158.33	-0.4	-8.2	18.8	16.4	2.38	7.922		
800.0	798.9	801.1	800.5	1.5	1.4	157.73	-6.8	-12.8	20.8	18.1	2.74	7.593		
900.0	898.3	901.4	900.3	1.7	1.7	156.77	-14.7	-18.4	22.9	19.8	3.12	7.344		
1,000.0	997.4	1,001.8	1,000.0	2.0	1.9	155.53	-23.9	-25.1	25.1	21.6	3.52	7.143		
1,100.0	1,096.3	1,102.1	1,099.5	2.3	2.2	154.11	-34.6	-32.7	27.4	23.5	3.93	6.971		
1,200.0	1,194.9	1,202.5	1,198.8	2.6	2.5	152.55	-46.7	-41.4	29.8	25.4	4.38	6.815		
1,300.0	1,293.3	1,302.9	1,297.8	3.0	2.8	150.91	-60.1	-51.1	32.4	27.5	4.86	6.664		
1,400.0	1,391.2	1,403.4	1,396.6	3.4	3.1	149.22	-75.0	-61.9	35.0	29.6	5.38	6.514		
1,500.0	1,488.9	1,503.8	1,495.0	3.8	3.5	147.50	-91.4	-73.6	37.8	31.9	5.95	6.362		
1,600.0	1,586.1	1,604.3	1,593.0	4.2	3.9	145.79	-109.1	-86.3	40.8	34.2	6.57	6.208		
1,700.0	1,682.9	1,704.2	1,690.4	4.7	4.3	144.93	-127.3	-99.5	44.6	37.4	7.19	6.202		
1,800.0	1,779.3	1,804.1	1,787.7	5.2	4.7	145.36	-145.5	-112.6	49.8	42.1	7.76	6.422		
1,900.0	1,875.2	1,903.8	1,884.9	5.7	5.2	146.57	-163.7	-125.7	56.3	48.0	8.28	6.804		
2,000.0	1,971.1	2,003.6	1,982.2	6.2	5.6	147.63	-181.9	-138.8	63.0	54.2	8.79	7.161		
2,100.0	2,067.1	2,103.4	2,079.4	6.7	6.0	148.49	-200.2	-151.9	69.6	60.3	9.31	7.480		
2,200.0	2,163.0	2,203.2	2,176.6	7.2	6.4	149.20	-218.4	-165.0	76.3	66.5	9.83	7.766		
2,300.0	2,258.9	2,302.9	2,273.8	7.7	6.8	149.79	-236.6	-178.1	83.0	72.6	10.34	8.022		
2,400.0	2,354.8	2,402.7	2,371.0	8.2	7.3	150.30	-254.8	-191.2	89.7	78.8	10.87	8.254		
2,500.0	2,450.7	2,502.5	2,468.2	8.8	7.7	150.73	-273.0	-204.3	96.4	85.0	11.39	8.465		
2,600.0	2,546.6	2,602.3	2,565.5	9.3	8.1	151.11	-291.2	-217.4	103.1	91.2	11.91	8.657		
2,700.0	2,642.5	2,702.0	2,662.7	9.8	8.5	151.44	-309.4	-230.5	109.8	97.4	12.43	8.833		
2,800.0	2,738.4	2,801.8	2,759.9	10.3	9.0	151.74	-327.6	-243.6	116.5	103.6	12.95	8.994		
2,900.0	2,834.3	2,901.6	2,857.1	10.8	9.4	152.00	-345.9	-256.7	123.2	109.7	13.48	9.143		
3,000.0	2,930.2	3,001.3	2,954.3	11.4	9.8	152.23	-364.1	-269.8	129.9	115.9	14.00	9.281		
3,100.0	3,026.1	3,101.1	3,051.5	11.9	10.2	152.45	-382.3	-282.9	136.7	122.1	14.53	9.408		
3,200.0	3,122.0	3,200.9	3,148.8	12.4	10.7	152.64	-400.5	-296.0	143.4	128.3	15.05	9.527		
3,300.0	3,217.9	3,300.7	3,246.0	12.9	11.1	152.81	-418.7	-309.1	150.1	134.5	15.58	9.637		
3,400.0	3,313.8	3,400.4	3,343.2	13.5	11.5	152.97	-436.9	-322.2	156.8	140.7	16.10	9.740		
3,500.0	3,409.7	3,500.2	3,440.4	14.0	11.9	153.12	-455.1	-335.3	163.6	146.9	16.63	9.837		
3,600.0	3,505.6	3,600.0	3,537.6	14.5	12.4	153.25	-473.4	-348.4	170.3	153.1	17.15	9.927		
3,700.0	3,601.6	3,699.8	3,634.8	15.0	12.8	153.38	-491.6	-361.5	177.0	159.3	17.68	10.012		
3,800.0	3,697.5	3,799.5	3,732.1	15.6	13.2	153.49	-509.8	-374.7	183.7	165.5	18.21	10.092		
3,900.0	3,793.4	3,899.3	3,829.3	16.1	13.7	153.60	-528.0	-387.8	190.5	171.7	18.73	10.168		
4,000.0	3,889.3	3,999.1	3,926.5	16.6	14.1	153.70	-546.2	-400.9	197.2	177.9	19.26	10.239		
4,100.0	3,985.2	4,098.8	4,023.7	17.1	14.5	153.79	-564.4	-414.0	203.9	184.1	19.79	10.307		
4,200.0	4,081.1	4,198.6	4,120.9	17.7	15.0	153.88	-582.6	-427.1	210.7	190.3	20.31	10.371		
4,300.0	4,177.0	4,298.4	4,218.2	18.2	15.4	153.96	-600.8	-440.2	217.4	196.5	20.84	10.431		
4,400.0	4,272.9	4,398.2	4,315.4	18.7	15.8	154.04	-619.1	-453.3	224.1	202.8	21.37	10.489		
4,500.0	4,368.8	4,497.9	4,412.6	19.3	16.2	154.11	-637.3	-466.4	230.9	209.0	21.89	10.544		
4,600.0	4,464.7	4,597.7	4,509.8	19.8	16.7	154.18	-655.5	-479.5	237.6	215.2	22.42	10.596		
4,700.0	4,560.6	4,697.5	4,607.0	20.3	17.1	154.25	-673.7	-492.6	244.3	221.4	22.95	10.646		
4,800.0	4,656.5	4,797.3	4,704.2	20.8	17.5	154.31	-691.9	-505.7	251.0	227.6	23.48	10.694		
4,900.0	4,752.4	4,897.0	4,801.5	21.4	18.0	154.37	-710.1	-518.8	257.8	233.8	24.00	10.739		
5,000.0	4,848.3	4,996.8	4,898.7	21.9	18.4	154.42	-728.3	-531.9	264.5	240.0	24.53	10.782		
5,100.0	4,944.2	5,096.6	4,995.9	22.4	18.8	154.47	-746.5	-545.0	271.2	246.2	25.06	10.824		

CC - Min centre to center distance or convergent point, SF - min separation factor, ES - min ellipse separation

Cathedral Energy Services

Anticollision Report

Company:	EnCana Oil & Gas (USA) Inc	Local Co-ordinate Reference:	Well Bohrer 2I-19H-E368
Project:	DJ Wattenberg	TVD Reference:	WELL @ 5083.0ft (Original Well Elev)
Reference Site:	S19-T3N-R68W (Bohrer)	MD Reference:	WELL @ 5083.0ft (Original Well Elev)
Site Error:	0.0ft	North Reference:	True
Reference Well:	Bohrer 2I-19H-E368	Survey Calculation Method:	Minimum Curvature
Well Error:	0.0ft	Output errors are at	2.00 sigma
Reference Wellbore	Hz	Database:	USA EDM 5000 Multi Users DB
Reference Design:	Plan #1	Offset TVD Reference:	Offset Datum

Offset Design S19-T3N-R68W (Bohrer) - Bohrer 2H-19H-E368 - Hz - Plan #1													Offset Site Error: 0.0 ft	
Survey Program: 0-Geolink MWD													Offset Well Error: 0.0 ft	
Reference		Offset		Semi Major Axis			Distance						Warning	
Measured Depth (ft)	Vertical Depth (ft)	Measured Depth (ft)	Vertical Depth (ft)	Reference (ft)	Offset (ft)	Highside Toolface (°)	Offset Wellbore Centre +N/-S (ft)	+E/-W (ft)	Between Centres (ft)	Between Ellipses (ft)	Total Uncertainty Axis	Separation Factor		
5,200.0	5,040.2	5,196.3	5,093.1	22.9	19.3	154.52	-764.8	-558.1	278.0	252.4	25.59	10.864		
5,300.0	5,136.1	5,296.1	5,190.3	23.5	19.7	154.57	-783.0	-571.2	284.7	258.6	26.12	10.902		
5,400.0	5,232.0	5,395.9	5,287.5	24.0	20.1	154.62	-801.2	-584.3	291.4	264.8	26.64	10.939		
5,500.0	5,327.9	5,495.7	5,384.8	24.5	20.5	154.66	-819.4	-597.4	298.2	271.0	27.17	10.974		
5,600.0	5,423.8	5,595.4	5,482.0	25.1	21.0	154.70	-837.6	-610.5	304.9	277.2	27.70	11.008		
5,700.0	5,519.7	5,695.2	5,579.2	25.6	21.4	154.74	-855.8	-623.6	311.6	283.4	28.23	11.041		
5,800.0	5,615.6	5,795.0	5,676.4	26.1	21.8	154.78	-874.0	-636.7	318.4	289.6	28.76	11.072		
5,900.0	5,711.5	5,894.8	5,773.6	26.6	22.3	154.82	-892.2	-649.8	325.1	295.8	29.28	11.103		
6,000.0	5,807.4	5,994.5	5,870.8	27.2	22.7	154.85	-910.5	-662.9	331.9	302.0	29.81	11.132		
6,100.0	5,903.3	6,094.3	5,968.1	27.7	23.1	154.88	-928.7	-676.0	338.6	308.2	30.34	11.160		
6,200.0	5,999.2	6,194.1	6,065.3	28.2	23.6	154.92	-946.9	-689.1	345.3	314.5	30.87	11.187		
6,300.0	6,095.1	6,293.8	6,162.5	28.7	24.0	154.95	-965.1	-702.3	352.1	320.7	31.40	11.213		
6,400.0	6,191.0	6,393.6	6,259.7	29.3	24.4	154.98	-983.3	-715.4	358.8	326.9	31.92	11.239		
6,500.0	6,287.2	6,493.3	6,356.8	29.8	24.9	175.62	-1,001.5	-728.4	365.4	329.9	32.46	11.257		
6,600.0	6,383.8	6,591.2	6,452.3	30.1	25.3	-150.71	-1,019.4	-741.1	371.7	337.7	33.92	10.956		
6,700.0	6,478.0	6,689.9	6,549.2	30.3	25.6	-132.11	-1,037.5	-743.3	379.0	343.8	35.30	10.739		
6,800.0	6,566.9	6,793.3	6,649.4	30.4	25.7	-124.02	-1,056.3	-727.4	387.6	351.8	35.86	10.808		
6,900.0	6,647.8	6,901.9	6,749.9	30.4	25.7	-120.69	-1,075.1	-691.2	396.9	361.5	35.47	11.189		
7,000.0	6,718.4	7,016.2	6,846.4	30.3	25.5	-119.53	-1,093.2	-633.1	406.3	372.2	34.13	11.905		
7,100.0	6,776.4	7,136.3	6,933.5	30.2	25.2	-119.37	-1,109.5	-552.4	415.1	383.0	32.08	12.940		
7,200.0	6,820.1	7,261.8	7,004.8	30.0	24.8	-119.61	-1,122.9	-450.3	422.3	392.5	29.83	14.159		
7,300.0	6,848.2	7,391.7	7,053.8	29.9	24.5	-119.94	-1,132.1	-330.6	427.4	399.2	28.18	15.166		
7,400.0	6,859.7	7,524.4	7,075.3	29.8	24.3	-120.15	-1,136.1	-200.0	429.7	401.7	27.97	15.362		
7,500.0	6,860.0	7,631.6	7,076.0	29.8	24.3	-120.17	-1,136.2	-92.9	429.8	400.6	29.21	14.715		
7,600.0	6,860.0	7,731.6	7,076.0	29.9	24.5	-120.17	-1,136.2	7.1	429.8	398.8	30.99	13.867		
7,700.0	6,860.0	7,831.6	7,076.0	30.3	24.9	-120.17	-1,136.2	107.1	429.8	396.6	33.24	12.931		
7,800.0	6,860.0	7,931.6	7,076.0	30.8	25.7	-120.17	-1,136.2	207.1	429.8	393.9	35.86	11.987		
7,900.0	6,860.0	8,031.6	7,076.0	31.5	26.7	-120.17	-1,136.2	307.1	429.8	391.0	38.77	11.085		
8,000.0	6,860.0	8,131.6	7,076.0	32.4	28.0	-120.17	-1,136.2	407.1	429.8	387.9	41.92	10.252		
8,100.0	6,860.0	8,231.6	7,076.0	33.6	29.5	-120.17	-1,136.2	507.1	429.8	384.5	45.26	9.496		
8,200.0	6,860.0	8,331.6	7,076.0	34.9	31.2	-120.17	-1,136.2	607.1	429.8	381.0	48.75	8.817		
8,300.0	6,860.0	8,431.6	7,076.0	36.4	33.0	-120.17	-1,136.2	707.1	429.8	377.4	52.35	8.210		
8,400.0	6,860.0	8,531.6	7,076.0	38.0	35.0	-120.17	-1,136.2	807.1	429.8	373.7	56.05	7.668		
8,500.0	6,860.0	8,631.6	7,076.0	39.8	37.0	-120.17	-1,136.2	907.1	429.8	370.0	59.83	7.183		
8,600.0	6,860.0	8,731.6	7,076.0	41.6	39.0	-120.17	-1,136.2	1,007.1	429.8	366.1	63.67	6.750		
8,700.0	6,860.0	8,831.6	7,076.0	43.5	41.1	-120.17	-1,136.2	1,107.1	429.8	362.2	67.57	6.361		
8,800.0	6,860.0	8,931.6	7,076.0	45.5	43.3	-120.17	-1,136.2	1,207.1	429.8	358.3	71.51	6.010		
8,900.0	6,860.0	9,031.6	7,076.0	47.6	45.5	-120.17	-1,136.2	1,307.1	429.8	354.3	75.49	5.694		
9,000.0	6,860.0	9,131.6	7,076.0	49.7	47.7	-120.17	-1,136.2	1,407.1	429.8	350.3	79.49	5.407		
9,100.0	6,860.0	9,231.6	7,076.0	51.8	49.9	-120.17	-1,136.2	1,507.1	429.8	346.3	83.53	5.145		
9,200.0	6,860.0	9,331.6	7,076.0	54.0	52.2	-120.17	-1,136.2	1,607.1	429.8	342.2	87.59	4.907		
9,300.0	6,860.0	9,431.6	7,076.0	56.2	54.5	-120.17	-1,136.2	1,707.1	429.8	338.1	91.67	4.688		
9,400.0	6,860.0	9,531.6	7,076.0	58.4	56.8	-120.17	-1,136.2	1,807.1	429.8	334.0	95.77	4.488		
9,500.0	6,860.0	9,631.6	7,076.0	60.7	59.1	-120.17	-1,136.2	1,907.1	429.8	329.9	99.88	4.303		
9,600.0	6,860.0	9,731.6	7,076.0	62.9	61.4	-120.17	-1,136.2	2,007.1	429.8	325.8	104.01	4.132		
9,700.0	6,860.0	9,831.6	7,076.0	65.2	63.8	-120.17	-1,136.2	2,107.1	429.8	321.6	108.15	3.974		
9,800.0	6,860.0	9,931.6	7,076.0	67.5	66.1	-120.17	-1,136.2	2,207.1	429.8	317.5	112.30	3.827		
9,900.0	6,860.0	10,031.6	7,076.0	69.8	68.5	-120.17	-1,136.2	2,307.1	429.8	313.3	116.46	3.691		
10,000.0	6,860.0	10,131.6	7,076.0	72.1	70.8	-120.17	-1,136.2	2,407.1	429.8	309.2	120.62	3.563		
10,100.0	6,860.0	10,231.6	7,076.0	74.4	73.2	-120.17	-1,136.2	2,507.1	429.8	305.0	124.80	3.444		
10,200.0	6,860.0	10,331.6	7,076.0	76.8	75.6	-120.17	-1,136.2	2,607.1	429.8	300.8	128.98	3.332		
10,300.0	6,860.0	10,431.6	7,076.0	79.1	78.0	-120.17	-1,136.2	2,707.1	429.8	296.6	133.17	3.227		

CC - Min centre to center distance or convergent point, SF - min separation factor, ES - min ellipse separation

Cathedral Energy Services

Anticollision Report

Company:	EnCana Oil & Gas (USA) Inc	Local Co-ordinate Reference:	Well Bohrer 2I-19H-E368
Project:	DJ Wattenberg	TVD Reference:	WELL @ 5083.0ft (Original Well Elev)
Reference Site:	S19-T3N-R68W (Bohrer)	MD Reference:	WELL @ 5083.0ft (Original Well Elev)
Site Error:	0.0ft	North Reference:	True
Reference Well:	Bohrer 2I-19H-E368	Survey Calculation Method:	Minimum Curvature
Well Error:	0.0ft	Output errors are at	2.00 sigma
Reference Wellbore	Hz	Database:	USA EDM 5000 Multi Users DB
Reference Design:	Plan #1	Offset TVD Reference:	Offset Datum

Offset Design											S19-T3N-R68W (Bohrer) - Bohrer 2H-19H-E368 - Hz - Plan #1		Offset Site Error:		0.0 ft
Survey Program:											0-Geolink MWD		Offset Well Error:		0.0 ft
Reference		Offset		Semi Major Axis			Distance							Warning	
Measured Depth Depth (ft)	Vertical Depth Depth (ft)	Measured Depth Depth (ft)	Vertical Depth Depth (ft)	Reference (ft)	Offset (ft)	Highside Toolface (°)	Offset Wellbore Centre +N/-S (ft)	+E/-W (ft)	Between Centres (ft)	Between Ellipses (ft)	Total Uncertainty Axis	Separation Factor			
10,400.0	6,860.0	10,531.6	7,076.0	81.5	80.3	-120.17	-1,136.2	2,807.1	429.8	292.4	137.37	3.129			
10,500.0	6,860.0	10,631.6	7,076.0	83.8	82.7	-120.17	-1,136.2	2,907.1	429.8	288.2	141.57	3.036			
10,600.0	6,860.0	10,731.6	7,076.0	86.2	85.1	-120.17	-1,136.2	3,007.1	429.8	284.0	145.77	2.948			
10,700.0	6,860.0	10,831.6	7,076.0	88.6	87.5	-120.17	-1,136.2	3,107.1	429.8	279.8	149.98	2.866			
10,800.0	6,860.0	10,931.6	7,076.0	90.9	89.9	-120.17	-1,136.2	3,207.1	429.8	275.6	154.20	2.787			
10,900.0	6,860.0	11,031.6	7,076.0	93.3	92.3	-120.17	-1,136.2	3,307.1	429.8	271.4	158.41	2.713			
11,000.0	6,860.0	11,131.6	7,076.0	95.7	94.8	-120.17	-1,136.2	3,407.1	429.8	267.2	162.63	2.643			
11,100.0	6,860.0	11,231.6	7,076.0	98.1	97.2	-120.17	-1,136.2	3,507.1	429.8	262.9	166.86	2.576			
11,200.0	6,860.0	11,331.6	7,076.0	100.5	99.6	-120.17	-1,136.2	3,607.1	429.8	258.7	171.09	2.512			
11,300.0	6,860.0	11,431.6	7,076.0	102.9	102.0	-120.17	-1,136.2	3,707.1	429.8	254.5	175.32	2.452			
11,400.0	6,860.0	11,531.6	7,076.0	105.3	104.4	-120.17	-1,136.2	3,807.1	429.8	250.2	179.55	2.394			
11,500.0	6,860.0	11,631.6	7,076.0	107.7	106.9	-120.17	-1,136.2	3,907.1	429.8	246.0	183.78	2.339			
11,600.0	6,860.0	11,731.6	7,076.0	110.1	109.3	-120.17	-1,136.2	4,007.1	429.8	241.8	188.02	2.286			
11,628.6	6,860.0	11,760.2	7,076.0	110.8	110.0	-120.17	-1,136.2	4,035.8	429.8	240.6	189.23	2.271 SF			

Cathedral Energy Services

Anticollision Report

Company:	EnCana Oil & Gas (USA) Inc	Local Co-ordinate Reference:	Well Bohrer 2I-19H-E368
Project:	DJ Wattenberg	TVD Reference:	WELL @ 5083.0ft (Original Well Elev)
Reference Site:	S19-T3N-R68W (Bohrer)	MD Reference:	WELL @ 5083.0ft (Original Well Elev)
Site Error:	0.0ft	North Reference:	True
Reference Well:	Bohrer 2I-19H-E368	Survey Calculation Method:	Minimum Curvature
Well Error:	0.0ft	Output errors are at	2.00 sigma
Reference Wellbore	Hz	Database:	USA EDM 5000 Multi Users DB
Reference Design:	Plan #1	Offset TVD Reference:	Offset Datum

Offset Design S19-T3N-R68W (Bohrer) - Boyd 3B-19H-M368 - Hz - Plan #1													Offset Site Error:	0.0 ft
Survey Program: O-Geolink MWD													Offset Well Error:	0.0 ft
Reference		Offset		Semi Major Axis			Distance				Total		Warning	
Measured Depth (ft)	Vertical Depth (ft)	Measured Depth (ft)	Vertical Depth (ft)	Reference (ft)	Offset (ft)	Highside Toolface (°)	Offset Wellbore Centre +N/-S (ft)	+E/-W (ft)	Between Centres (ft)	Between Ellipses (ft)	Uncertainty Axis	Separation Factor		
6,900.0	6,647.8	6,791.3	6,691.9	30.4	21.9	91.16	-1,909.4	-695.6	472.2	441.9	30.32	15.577		
7,000.0	6,718.4	6,900.0	6,786.6	30.3	21.7	101.57	-1,895.3	-644.4	450.0	420.3	29.69	15.155		
7,100.0	6,776.4	7,018.0	6,876.5	30.2	21.5	110.10	-1,881.9	-569.6	434.7	406.3	28.38	15.315		
7,200.0	6,820.1	7,146.0	6,954.7	30.0	21.2	116.84	-1,870.2	-469.3	425.6	399.1	26.52	16.052		
7,300.0	6,848.2	7,283.1	7,011.9	29.9	21.1	121.51	-1,861.7	-345.3	421.5	396.4	25.04	16.832		
7,383.3	6,858.9	7,402.5	7,036.7	29.8	21.1	123.50	-1,858.0	-228.8	420.6	395.4	25.21	16.683 CC		
7,400.0	6,859.7	7,426.7	7,038.8	29.8	21.1	123.68	-1,857.7	-204.7	420.6	395.2	25.44	16.535		
7,500.0	6,860.0	7,538.5	7,040.0	29.8	21.4	123.79	-1,857.5	-92.9	420.8	393.6	27.13	15.510		
7,600.0	6,860.0	7,638.5	7,040.0	29.9	22.0	123.79	-1,857.5	7.1	420.8	391.6	29.17	14.425		
7,700.0	6,860.0	7,738.5	7,040.0	30.3	22.9	123.79	-1,857.5	107.1	420.8	389.1	31.62	13.307		
7,800.0	6,860.0	7,838.5	7,040.0	30.8	24.2	123.79	-1,857.5	207.1	420.8	386.4	34.39	12.234		
7,900.0	6,860.0	7,938.5	7,040.0	31.5	25.7	123.79	-1,857.5	307.1	420.8	383.3	37.42	11.245		
8,000.0	6,860.0	8,038.5	7,040.0	32.4	27.4	123.79	-1,857.5	407.1	420.8	380.1	40.63	10.355		
8,100.0	6,860.0	8,138.5	7,040.0	33.6	29.2	123.79	-1,857.5	507.1	420.8	376.8	44.00	9.562		
8,200.0	6,860.0	8,238.5	7,040.0	34.9	31.2	123.79	-1,857.5	607.1	420.8	373.3	47.49	8.860		
8,300.0	6,860.0	8,338.5	7,040.0	36.4	33.2	123.79	-1,857.5	707.1	420.8	369.7	51.07	8.239		
8,400.0	6,860.0	8,438.5	7,040.0	38.0	35.3	123.79	-1,857.5	807.1	420.8	366.0	54.73	7.688		
8,500.0	6,860.0	8,538.5	7,040.0	39.8	37.4	123.79	-1,857.5	907.1	420.8	362.3	58.45	7.199		
8,600.0	6,860.0	8,638.5	7,040.0	41.6	39.6	123.79	-1,857.5	1,007.1	420.8	358.5	62.22	6.763		
8,700.0	6,860.0	8,738.5	7,040.0	43.5	41.8	123.79	-1,857.5	1,107.1	420.8	354.7	66.03	6.372		
8,800.0	6,860.0	8,838.5	7,040.0	45.5	44.1	123.79	-1,857.5	1,207.1	420.8	350.9	69.88	6.022		
8,900.0	6,860.0	8,938.5	7,040.0	47.6	46.4	123.79	-1,857.5	1,307.1	420.8	347.0	73.75	5.705		
9,000.0	6,860.0	9,038.5	7,040.0	49.7	48.6	123.79	-1,857.5	1,407.1	420.8	343.1	77.65	5.418		
9,100.0	6,860.0	9,138.5	7,040.0	51.8	51.0	123.79	-1,857.5	1,507.1	420.8	339.2	81.58	5.158		
9,200.0	6,860.0	9,238.5	7,040.0	54.0	53.3	123.79	-1,857.5	1,607.1	420.8	335.3	85.52	4.920		
9,300.0	6,860.0	9,338.5	7,040.0	56.2	55.6	123.79	-1,857.5	1,707.1	420.8	331.3	89.47	4.703		
9,400.0	6,860.0	9,438.5	7,040.0	58.4	57.9	123.79	-1,857.5	1,807.1	420.8	327.3	93.45	4.503		
9,500.0	6,860.0	9,538.5	7,040.0	60.7	60.3	123.79	-1,857.5	1,907.1	420.8	323.3	97.43	4.319		
9,600.0	6,860.0	9,638.5	7,040.0	62.9	62.7	123.79	-1,857.5	2,007.1	420.8	319.3	101.42	4.149		
9,700.0	6,860.0	9,738.5	7,040.0	65.2	65.0	123.79	-1,857.5	2,107.1	420.8	315.3	105.43	3.991		
9,800.0	6,860.0	9,838.5	7,040.0	67.5	67.4	123.79	-1,857.5	2,207.1	420.8	311.3	109.44	3.845		
9,900.0	6,860.0	9,938.5	7,040.0	69.8	69.8	123.79	-1,857.5	2,307.1	420.8	307.3	113.46	3.709		
10,000.0	6,860.0	10,038.5	7,040.0	72.1	72.2	123.79	-1,857.5	2,407.1	420.8	303.3	117.49	3.581		
10,100.0	6,860.0	10,138.5	7,040.0	74.4	74.6	123.79	-1,857.5	2,507.1	420.8	299.3	121.52	3.463		
10,200.0	6,860.0	10,238.5	7,040.0	76.8	77.0	123.79	-1,857.5	2,607.1	420.8	295.2	125.56	3.351		
10,300.0	6,860.0	10,338.5	7,040.0	79.1	79.4	123.79	-1,857.5	2,707.1	420.8	291.2	129.60	3.247		
10,400.0	6,860.0	10,438.5	7,040.0	81.5	81.8	123.79	-1,857.5	2,807.1	420.8	287.1	133.65	3.148		
10,500.0	6,860.0	10,538.5	7,040.0	83.8	84.2	123.79	-1,857.5	2,907.1	420.8	283.1	137.70	3.056		
10,600.0	6,860.0	10,638.5	7,040.0	86.2	86.6	123.79	-1,857.5	3,007.1	420.8	279.0	141.76	2.968		
10,700.0	6,860.0	10,738.5	7,040.0	88.6	89.1	123.79	-1,857.5	3,107.1	420.8	275.0	145.82	2.886		
10,800.0	6,860.0	10,838.5	7,040.0	90.9	91.5	123.79	-1,857.5	3,207.1	420.8	270.9	149.88	2.807		
10,900.0	6,860.0	10,938.5	7,040.0	93.3	93.9	123.79	-1,857.5	3,307.1	420.8	266.8	153.95	2.733		
11,000.0	6,860.0	11,038.5	7,040.0	95.7	96.3	123.79	-1,857.5	3,407.1	420.8	262.8	158.01	2.663		
11,100.0	6,860.0	11,138.5	7,040.0	98.1	98.8	123.79	-1,857.5	3,507.1	420.8	258.7	162.09	2.596		
11,200.0	6,860.0	11,238.5	7,040.0	100.5	101.2	123.79	-1,857.5	3,607.1	420.8	254.6	166.16	2.532		
11,300.0	6,860.0	11,338.5	7,040.0	102.9	103.6	123.79	-1,857.5	3,707.1	420.8	250.5	170.23	2.472		
11,400.0	6,860.0	11,438.5	7,040.0	105.3	106.1	123.79	-1,857.5	3,807.1	420.8	246.5	174.31	2.414		
11,500.0	6,860.0	11,538.5	7,040.0	107.7	108.5	123.79	-1,857.5	3,907.1	420.8	242.4	178.39	2.359		
11,600.0	6,860.0	11,638.5	7,040.0	110.1	110.9	123.79	-1,857.5	4,007.1	420.8	238.3	182.47	2.306		
11,612.5	6,860.0	11,651.0	7,040.0	110.4	111.3	123.79	-1,857.5	4,019.6	420.8	237.8	182.98	2.300		
11,628.6	6,860.0	11,664.4	7,040.0	110.8	111.6	123.79	-1,857.5	4,033.0	420.8	237.2	183.59	2.292 ES, SF		

CC - Min centre to center distance or convergent point, SF - min separation factor, ES - min ellipse separation

Cathedral Energy Services

Anticollision Report

Company:	EnCana Oil & Gas (USA) Inc	Local Co-ordinate Reference:	Well Bohrer 2I-19H-E368
Project:	DJ Wattenberg	TVD Reference:	WELL @ 5083.0ft (Original Well Elev)
Reference Site:	S19-T3N-R68W (Bohrer)	MD Reference:	WELL @ 5083.0ft (Original Well Elev)
Site Error:	0.0ft	North Reference:	True
Reference Well:	Bohrer 2I-19H-E368	Survey Calculation Method:	Minimum Curvature
Well Error:	0.0ft	Output errors are at	2.00 sigma
Reference Wellbore	Hz	Database:	USA EDM 5000 Multi Users DB
Reference Design:	Plan #1	Offset TVD Reference:	Offset Datum

Reference Depths are relative to WELL @ 5083.0ft (Original Well Elev)
Offset Depths are relative to Offset Datum
Central Meridian is -105.500000 °

Coordinates are relative to: Bohrer 2I-19H-E368
Coordinate System is US State Plane 1983, Colorado Northern Zone
Grid Convergence at Surface is: 0.29°

