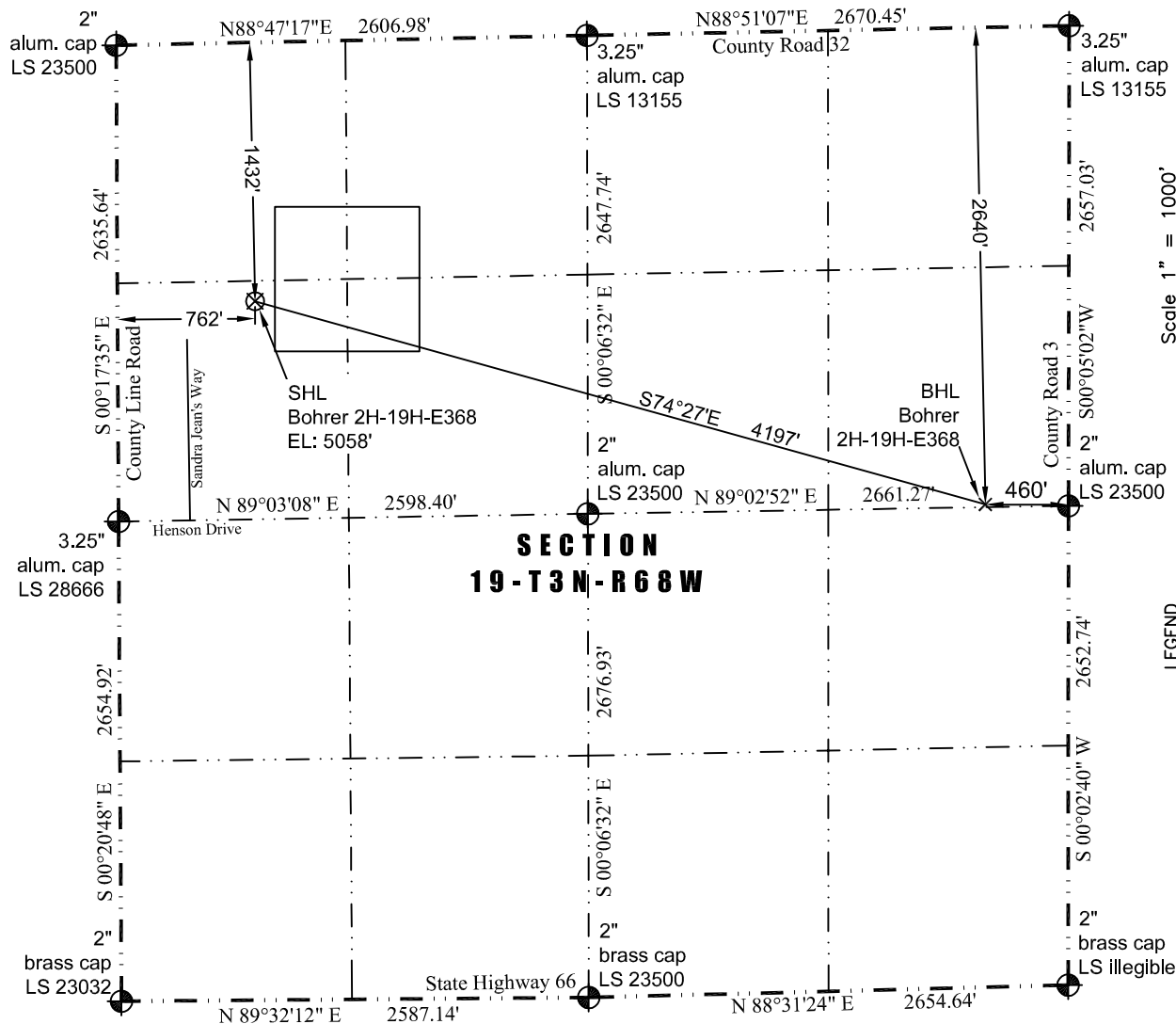


JR Land Surveying, LLC

8114 Northstar Drive
Windsor, Colorado 80528
P. 970-576-4641

WELL LOCATION CERTIFICATE

THIS MAP DOES NOT REPRESENT A BOUNDARY SURVEY



Scale 1" = 1000'
0 1000
approximate scale

LEGEND
— found survey monument
— calculated dimension
(c)

In accordance with a request from Jay Knutson of EnCana Oil & Gas (USA) Inc., JR Land Surveying, LLC has determined the location of the **Bohrer 2H-19H-E368** well site to be SHL: 1432' FNL and 762' FWL, (BHL: 2640' FNL and 460' FEL), as measured at ninety (90) degrees from the section lines of Section 19, Township 3 North, Range 68 West of the 6th Principal Meridian, Weld County Colorado.

Surface Hole Data:

Latitude: N 40.21429° (BHL: 40.21114°)
Longitude: W 105.05245° (BHL: 105.03799°)
PDOP: 2.0

Nearest:

Building: 576' southwest
Public Road: 412' southwest
Property Line: 113' north
Existing Well: Haley #2, 5,453' southeast

Above Ground Utility: 792' west
Railroad: 11,354' west
Well Window: SHL is 110' outside

Notes:

- 1) Bearings and distances based on NAD 83 Colorado North State Plane Coordinates using RTK GPS observations taken 6/12/13 by operator John Rice.
- 2) Conversion factor to ground (1.0002868332).
- 3) Elevations based on NAVD 88 GPS heights and Geoid 2003 corrections.
- 4) The surface use is a cultivated field.

NOTICE: According to Colorado law you must commence any legal action based upon any defect in this W.L.C. within three years after you first discover such defect. In no event may any action based upon any defect in this W.L.C. be commenced more than ten years from this said date of the certification shown hereon.

I hereby certify that this Well Location Certificate was prepared by me or under my direct supervision on 6/12/2013 for and on behalf of EnCana Oil & Gas (USA) Inc. That it is not a Land Survey Plat or an Improvement Survey Plat and that it is not to be relied upon for establishment of fences, buildings, or other future improvement lines.

John Robert McGehee LS#38219
Well: Bohrer 2H-19H-E368 WLC