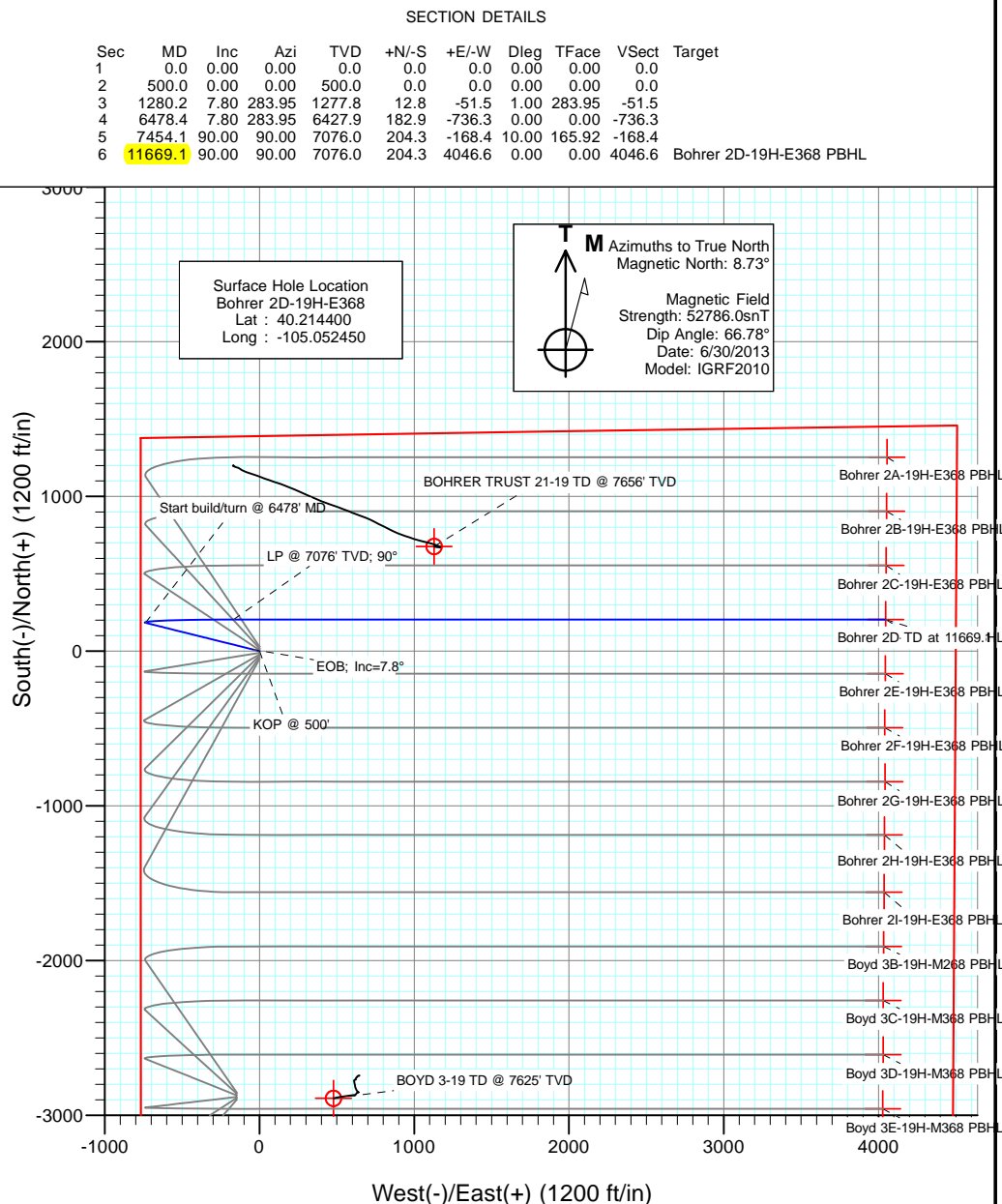
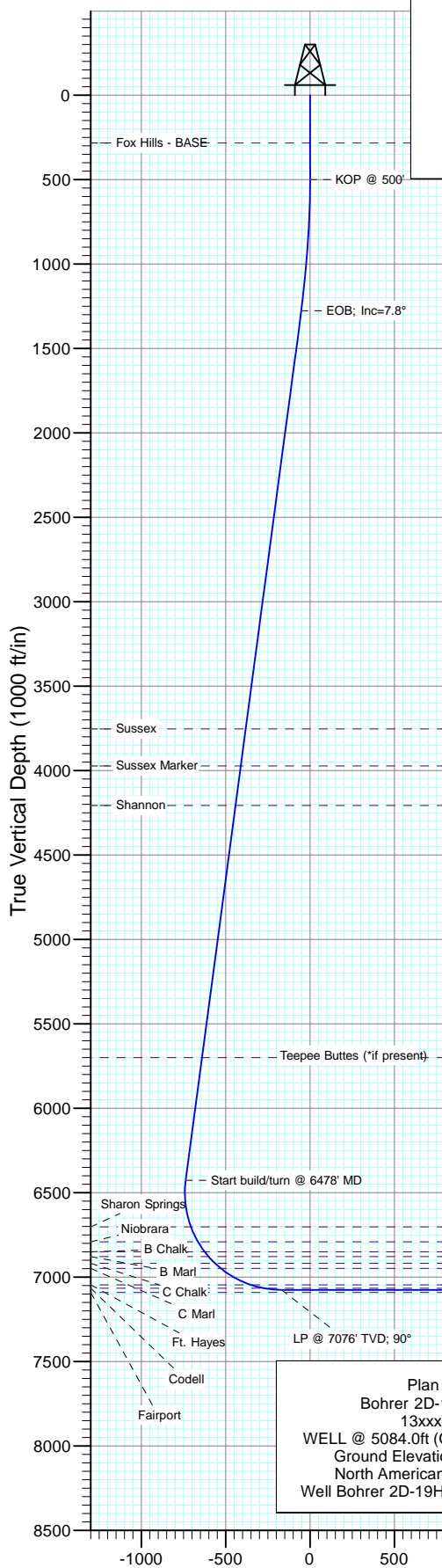




Project: DJ Wattenberg
Site: S19-T3N-R68W (Bohrer)
Well: Bohrer 2D-19H-E368
Wellbore: Hz
Design: Plan #1



DESIGN TARGET DETAILS					
Name	+N/-S	+E/-W	Northing	Easting	Latitude
Bohrer 2D-19H-E368 PBHL	204.3	4046.6	1321490.95	3129039.83	40.214960

Plan #1
Bohrer 2D-19H-E368
13xxx; LR
WELL @ 5084.0ft (Original Well Elev)
Ground Elevation @ 5059.0
North American Datum 1983
Well Bohrer 2D-19H-E368, True North

FORMATION TOP DETAILS		
TVDPath	MDPath	Formation
284.0	284.0	Fox Hills - BASE
3754.0	3779.5	Sussex
3973.0	4000.6	Sussex Marker
4207.0	4236.8	Shannon
5700.0	5743.7	Teepee Buttes (*if present)
6703.0	6758.2	Niobrara
6791.0	6855.7	B Chalk
6850.0	6926.7	B Marl
6879.0	6964.1	C Chalk
6919.0	7019.5	C Marl
6949.0	7065.1	Ft. Hayes
7046.0	7267.9	Codell
7066.0	7346.9	

Cathedral Energy Services

Planning Report

Database:	USA EDM 5000 Multi Users DB	Local Co-ordinate Reference:	Well Bohrer 2D-19H-E368
Company:	EnCana Oil & Gas (USA) Inc	TVD Reference:	WELL @ 5084.0ft (Original Well Elev)
Project:	DJ Wattenberg	MD Reference:	WELL @ 5084.0ft (Original Well Elev)
Site:	S19-T3N-R68W (Bohrer)	North Reference:	True
Well:	Bohrer 2D-19H-E368	Survey Calculation Method:	Minimum Curvature
Wellbore:	Hz		
Design:	Plan #1		

Project	DJ Wattenberg		
Map System:	US State Plane 1983	System Datum:	Mean Sea Level
Geo Datum:	North American Datum 1983		
Map Zone:	Colorado Northern Zone		

Site		S19-T3N-R68W (Bohrer)			
Site Position:		Northing:	1,318,413.14 ft	Latitude:	40.206570
From:	Lat/Long	Easting:	3,124,860.64 ft	Longitude:	-105.052980
Position Uncertainty:	0.0 ft	Slot Radius:	13.200 in	Grid Convergence:	0.29 °

Well	Bohrer 2D-19H-E368					
Well Position	+N/-S	0.0 ft	Northing:	1,321,266.19 ft	Latitude:	40.214400
	+E/-W	0.0 ft	Easting:	3,124,994.27 ft	Longitude:	-105.052450
Position Uncertainty		0.0 ft	Wellhead Elevation:	ft	Ground Level:	5,059.0 ft

Wellbore	Hz				
Magnetics	Model Name	Sample Date	Declination (°)	Dip Angle (°)	Field Strength (nT)
	IGRF2010	6/30/2013	8.73	66.78	52,786

Design	Plan #1			
Audit Notes:				
Version:	Phase:	PLAN	Tie On Depth:	0.0
Vertical Section:	Depth From (TVD) (ft)	+N/-S (ft)	+E/-W (ft)	Direction (°)
	0.0	0.0	0.0	90.00

Plan Sections										
Measured Depth (ft)	Inclination (°)	Azimuth (°)	Vertical Depth (ft)	+N/-S (ft)	+E/-W (ft)	Dogleg Rate (°/100ft)	Build Rate (°/100ft)	Turn Rate (°/100ft)	TFO (°)	Target
0.0	0.00	0.00	0.0	0.0	0.0	0.00	0.00	0.00	0.00	
500.0	0.00	0.00	500.0	0.0	0.0	0.00	0.00	0.00	0.00	
1,280.2	7.80	283.95	1,277.8	12.8	-51.5	1.00	1.00	0.00	283.95	
6,478.4	7.80	283.95	6,427.9	182.9	-736.3	0.00	0.00	0.00	0.00	
7,454.1	90.00	90.00	7,076.0	204.3	-168.4	10.00	8.42	17.02	165.92	
11,669.1	90.00	90.00	7,076.0	204.3	4,046.6	0.00	0.00	0.00	0.00	Bohrer 2D-19H-E368

Cathedral Energy Services

Planning Report

Database:	USA EDM 5000 Multi Users DB	Local Co-ordinate Reference:	Well Bohrer 2D-19H-E368
Company:	EnCana Oil & Gas (USA) Inc	TVD Reference:	WELL @ 5084.0ft (Original Well Elev)
Project:	DJ Wattenberg	MD Reference:	WELL @ 5084.0ft (Original Well Elev)
Site:	S19-T3N-R68W (Bohrer)	North Reference:	True
Well:	Bohrer 2D-19H-E368	Survey Calculation Method:	Minimum Curvature
Wellbore:	Hz		
Design:	Plan #1		

Planned Survey									
Measured Depth (ft)	Inclination (°)	Azimuth (°)	Vertical Depth (ft)	+N/-S (ft)	+E/-W (ft)	Vertical Section (ft)	Dogleg Rate (°/100ft)	Build Rate (°/100ft)	Comments / Formations
0.0	0.00	0.00	0.0	0.0	0.0	0.0	0.00	0.00	
100.0	0.00	0.00	100.0	0.0	0.0	0.0	0.00	0.00	
200.0	0.00	0.00	200.0	0.0	0.0	0.0	0.00	0.00	
284.0	0.00	0.00	284.0	0.0	0.0	0.0	0.00	0.00	Fox Hills - BASE
300.0	0.00	0.00	300.0	0.0	0.0	0.0	0.00	0.00	
400.0	0.00	0.00	400.0	0.0	0.0	0.0	0.00	0.00	
500.0	0.00	0.00	500.0	0.0	0.0	0.0	0.00	0.00	KOP @ 500'
600.0	1.00	283.95	600.0	0.2	-0.8	-0.8	1.00	1.00	
700.0	2.00	283.95	700.0	0.8	-3.4	-3.4	1.00	1.00	
800.0	3.00	283.95	799.9	1.9	-7.6	-7.6	1.00	1.00	
900.0	4.00	283.95	899.7	3.4	-13.5	-13.5	1.00	1.00	
1,000.0	5.00	283.95	999.4	5.3	-21.2	-21.2	1.00	1.00	
1,100.0	6.00	283.95	1,098.9	7.6	-30.5	-30.5	1.00	1.00	
1,200.0	7.00	283.95	1,198.3	10.3	-41.4	-41.4	1.00	1.00	
1,280.2	7.80	283.95	1,277.8	12.8	-51.5	-51.5	1.00	1.00	EOB; Inc=7.8°
1,300.0	7.80	283.95	1,297.4	13.4	-54.1	-54.1	0.00	0.00	
1,400.0	7.80	283.95	1,396.5	16.7	-67.3	-67.3	0.00	0.00	
1,500.0	7.80	283.95	1,495.6	20.0	-80.4	-80.4	0.00	0.00	
1,600.0	7.80	283.95	1,594.6	23.3	-93.6	-93.6	0.00	0.00	
1,700.0	7.80	283.95	1,693.7	26.5	-106.8	-106.8	0.00	0.00	
1,800.0	7.80	283.95	1,792.8	29.8	-120.0	-120.0	0.00	0.00	
1,900.0	7.80	283.95	1,891.9	33.1	-133.1	-133.1	0.00	0.00	
2,000.0	7.80	283.95	1,990.9	36.3	-146.3	-146.3	0.00	0.00	
2,100.0	7.80	283.95	2,090.0	39.6	-159.5	-159.5	0.00	0.00	
2,200.0	7.80	283.95	2,189.1	42.9	-172.7	-172.7	0.00	0.00	
2,300.0	7.80	283.95	2,288.2	46.2	-185.8	-185.8	0.00	0.00	
2,400.0	7.80	283.95	2,387.2	49.4	-199.0	-199.0	0.00	0.00	
2,500.0	7.80	283.95	2,486.3	52.7	-212.2	-212.2	0.00	0.00	
2,600.0	7.80	283.95	2,585.4	56.0	-225.4	-225.4	0.00	0.00	
2,700.0	7.80	283.95	2,684.4	59.3	-238.5	-238.5	0.00	0.00	
2,800.0	7.80	283.95	2,783.5	62.5	-251.7	-251.7	0.00	0.00	
2,900.0	7.80	283.95	2,882.6	65.8	-264.9	-264.9	0.00	0.00	
3,000.0	7.80	283.95	2,981.7	69.1	-278.1	-278.1	0.00	0.00	
3,100.0	7.80	283.95	3,080.7	72.4	-291.2	-291.2	0.00	0.00	
3,200.0	7.80	283.95	3,179.8	75.6	-304.4	-304.4	0.00	0.00	
3,300.0	7.80	283.95	3,278.9	78.9	-317.6	-317.6	0.00	0.00	
3,400.0	7.80	283.95	3,378.0	82.2	-330.8	-330.8	0.00	0.00	
3,500.0	7.80	283.95	3,477.0	85.4	-343.9	-343.9	0.00	0.00	
3,600.0	7.80	283.95	3,576.1	88.7	-357.1	-357.1	0.00	0.00	
3,700.0	7.80	283.95	3,675.2	92.0	-370.3	-370.3	0.00	0.00	
3,779.5	7.80	283.95	3,754.0	94.6	-380.8	-380.8	0.00	0.00	Sussex
3,800.0	7.80	283.95	3,774.3	95.3	-383.4	-383.4	0.00	0.00	
3,900.0	7.80	283.95	3,873.3	98.5	-396.6	-396.6	0.00	0.00	
4,000.0	7.80	283.95	3,972.4	101.8	-409.8	-409.8	0.00	0.00	
4,000.6	7.80	283.95	3,973.0	101.8	-409.9	-409.9	0.00	0.00	Sussex Marker
4,100.0	7.80	283.95	4,071.5	105.1	-423.0	-423.0	0.00	0.00	
4,200.0	7.80	283.95	4,170.6	108.4	-436.1	-436.1	0.00	0.00	
4,236.8	7.80	283.95	4,207.0	109.6	-441.0	-441.0	0.00	0.00	Shannon
4,300.0	7.80	283.95	4,269.6	111.6	-449.3	-449.3	0.00	0.00	
4,400.0	7.80	283.95	4,368.7	114.9	-462.5	-462.5	0.00	0.00	
4,500.0	7.80	283.95	4,467.8	118.2	-475.7	-475.7	0.00	0.00	
4,600.0	7.80	283.95	4,566.9	121.4	-488.8	-488.8	0.00	0.00	

Cathedral Energy Services

Planning Report

Database:	USA EDM 5000 Multi Users DB	Local Co-ordinate Reference:	Well Bohrer 2D-19H-E368
Company:	EnCana Oil & Gas (USA) Inc	TVD Reference:	WELL @ 5084.0ft (Original Well Elev)
Project:	DJ Wattenberg	MD Reference:	WELL @ 5084.0ft (Original Well Elev)
Site:	S19-T3N-R68W (Bohrer)	North Reference:	True
Well:	Bohrer 2D-19H-E368	Survey Calculation Method:	Minimum Curvature
Wellbore:	Hz		
Design:	Plan #1		

Planned Survey									
Measured Depth (ft)	Inclination (°)	Azimuth (°)	Vertical Depth (ft)	+N/-S (ft)	+E/-W (ft)	Vertical Section (ft)	Dogleg Rate (°/100ft)	Build Rate (°/100ft)	Comments / Formations
4,700.0	7.80	283.95	4,665.9	124.7	-502.0	-502.0	0.00	0.00	
4,800.0	7.80	283.95	4,765.0	128.0	-515.2	-515.2	0.00	0.00	
4,900.0	7.80	283.95	4,864.1	131.3	-528.4	-528.4	0.00	0.00	
5,000.0	7.80	283.95	4,963.2	134.5	-541.5	-541.5	0.00	0.00	
5,100.0	7.80	283.95	5,062.2	137.8	-554.7	-554.7	0.00	0.00	
5,200.0	7.80	283.95	5,161.3	141.1	-567.9	-567.9	0.00	0.00	
5,300.0	7.80	283.95	5,260.4	144.4	-581.1	-581.1	0.00	0.00	
5,400.0	7.80	283.95	5,359.5	147.6	-594.2	-594.2	0.00	0.00	
5,500.0	7.80	283.95	5,458.5	150.9	-607.4	-607.4	0.00	0.00	
5,600.0	7.80	283.95	5,557.6	154.2	-620.6	-620.6	0.00	0.00	
5,700.0	7.80	283.95	5,656.7	157.5	-633.8	-633.8	0.00	0.00	
5,743.7	7.80	283.95	5,700.0	158.9	-639.5	-639.5	0.00	0.00	Teepee Buttes (*if present)
5,800.0	7.80	283.95	5,755.8	160.7	-646.9	-646.9	0.00	0.00	
5,900.0	7.80	283.95	5,854.8	164.0	-660.1	-660.1	0.00	0.00	
6,000.0	7.80	283.95	5,953.9	167.3	-673.3	-673.3	0.00	0.00	
6,100.0	7.80	283.95	6,053.0	170.5	-686.5	-686.5	0.00	0.00	
6,200.0	7.80	283.95	6,152.0	173.8	-699.6	-699.6	0.00	0.00	
6,300.0	7.80	283.95	6,251.1	177.1	-712.8	-712.8	0.00	0.00	
6,400.0	7.80	283.95	6,350.2	180.4	-726.0	-726.0	0.00	0.00	
6,478.4	7.80	283.95	6,427.9	182.9	-736.3	-736.3	0.00	0.00	Start build/turn @ 6478' MD
6,500.0	5.73	289.21	6,449.3	183.6	-738.8	-738.8	10.00	-9.59	
6,600.0	4.96	67.62	6,549.1	186.9	-739.5	-739.5	10.00	-0.77	
6,700.0	14.71	82.77	6,647.6	190.2	-722.9	-722.9	10.00	9.75	
6,758.2	20.49	84.93	6,703.0	192.0	-705.4	-705.4	10.00	9.94	Sharon Springs
6,800.0	24.65	85.87	6,741.6	193.3	-689.4	-689.4	10.00	9.96	
6,855.7	30.21	86.75	6,791.0	194.9	-663.8	-663.8	10.00	9.97	Niobrara
6,900.0	34.63	87.26	6,828.4	196.2	-640.1	-640.1	10.00	9.98	
6,926.7	37.29	87.51	6,850.0	196.9	-624.4	-624.4	10.00	9.98	B Chalk
6,964.1	41.03	87.82	6,879.0	197.8	-600.8	-600.8	10.00	9.99	B Marl
7,000.0	44.62	88.08	6,905.3	198.7	-576.4	-576.4	10.00	9.99	
7,019.5	46.57	88.21	6,919.0	199.2	-562.5	-562.5	10.00	9.99	C Chalk
7,065.1	51.12	88.47	6,949.0	200.1	-528.2	-528.2	10.00	9.99	C Marl
7,100.0	54.61	88.66	6,970.0	200.8	-500.4	-500.4	10.00	9.99	
7,200.0	64.60	89.10	7,020.6	202.5	-414.3	-414.3	10.00	9.99	
7,267.9	71.38	89.36	7,046.0	203.4	-351.4	-351.4	10.00	9.99	Ft. Hayes
7,300.0	74.59	89.48	7,055.4	203.7	-320.7	-320.7	10.00	9.99	
7,346.9	79.28	89.64	7,066.0	204.0	-275.0	-275.0	10.00	9.99	Codell
7,400.0	84.59	89.82	7,073.4	204.3	-222.4	-222.4	10.00	9.99	
7,454.1	90.00	90.00	7,076.0	204.3	-168.4	-168.4	10.00	9.99	LP @ 7076' TVD; 90°
7,500.0	90.00	90.00	7,076.0	204.3	-122.5	-122.5	0.00	0.00	
7,600.0	90.00	90.00	7,076.0	204.3	-22.5	-22.5	0.00	0.00	
7,700.0	90.00	90.00	7,076.0	204.3	77.5	77.5	0.00	0.00	
7,800.0	90.00	90.00	7,076.0	204.3	177.5	177.5	0.00	0.00	
7,900.0	90.00	90.00	7,076.0	204.3	277.5	277.5	0.00	0.00	
8,000.0	90.00	90.00	7,076.0	204.3	377.5	377.5	0.00	0.00	
8,100.0	90.00	90.00	7,076.0	204.3	477.5	477.5	0.00	0.00	
8,200.0	90.00	90.00	7,076.0	204.3	577.5	577.5	0.00	0.00	
8,300.0	90.00	90.00	7,076.0	204.3	677.5	677.5	0.00	0.00	
8,400.0	90.00	90.00	7,076.0	204.3	777.5	777.5	0.00	0.00	
8,500.0	90.00	90.00	7,076.0	204.3	877.5	877.5	0.00	0.00	
8,600.0	90.00	90.00	7,076.0	204.3	977.5	977.5	0.00	0.00	
8,700.0	90.00	90.00	7,076.0	204.3	1,077.5	1,077.5	0.00	0.00	

Cathedral Energy Services

Planning Report

Database:	USA EDM 5000 Multi Users DB	Local Co-ordinate Reference:	Well Bohrer 2D-19H-E368
Company:	EnCana Oil & Gas (USA) Inc	TVD Reference:	WELL @ 5084.0ft (Original Well Elev)
Project:	DJ Wattenberg	MD Reference:	WELL @ 5084.0ft (Original Well Elev)
Site:	S19-T3N-R68W (Bohrer)	North Reference:	True
Well:	Bohrer 2D-19H-E368	Survey Calculation Method:	Minimum Curvature
Wellbore:	Hz		
Design:	Plan #1		

Planned Survey									
Measured Depth (ft)	Inclination (°)	Azimuth (°)	Vertical Depth (ft)	+N/-S (ft)	+E/-W (ft)	Vertical Section (ft)	Dogleg Rate (°/100ft)	Build Rate (°/100ft)	Comments / Formations
8,800.0	90.00	90.00	7,076.0	204.3	1,177.5	1,177.5	0.00	0.00	
8,900.0	90.00	90.00	7,076.0	204.3	1,277.5	1,277.5	0.00	0.00	
9,000.0	90.00	90.00	7,076.0	204.3	1,377.5	1,377.5	0.00	0.00	
9,100.0	90.00	90.00	7,076.0	204.3	1,477.5	1,477.5	0.00	0.00	
9,200.0	90.00	90.00	7,076.0	204.3	1,577.5	1,577.5	0.00	0.00	
9,300.0	90.00	90.00	7,076.0	204.3	1,677.5	1,677.5	0.00	0.00	
9,400.0	90.00	90.00	7,076.0	204.3	1,777.5	1,777.5	0.00	0.00	
9,500.0	90.00	90.00	7,076.0	204.3	1,877.5	1,877.5	0.00	0.00	
9,600.0	90.00	90.00	7,076.0	204.3	1,977.5	1,977.5	0.00	0.00	
9,700.0	90.00	90.00	7,076.0	204.3	2,077.5	2,077.5	0.00	0.00	
9,800.0	90.00	90.00	7,076.0	204.3	2,177.5	2,177.5	0.00	0.00	
9,900.0	90.00	90.00	7,076.0	204.3	2,277.5	2,277.5	0.00	0.00	
10,000.0	90.00	90.00	7,076.0	204.3	2,377.5	2,377.5	0.00	0.00	
10,100.0	90.00	90.00	7,076.0	204.3	2,477.5	2,477.5	0.00	0.00	
10,200.0	90.00	90.00	7,076.0	204.3	2,577.5	2,577.5	0.00	0.00	
10,300.0	90.00	90.00	7,076.0	204.3	2,677.5	2,677.5	0.00	0.00	
10,400.0	90.00	90.00	7,076.0	204.3	2,777.5	2,777.5	0.00	0.00	
10,500.0	90.00	90.00	7,076.0	204.3	2,877.5	2,877.5	0.00	0.00	
10,600.0	90.00	90.00	7,076.0	204.3	2,977.5	2,977.5	0.00	0.00	
10,700.0	90.00	90.00	7,076.0	204.3	3,077.5	3,077.5	0.00	0.00	
10,800.0	90.00	90.00	7,076.0	204.3	3,177.5	3,177.5	0.00	0.00	
10,900.0	90.00	90.00	7,076.0	204.3	3,277.5	3,277.5	0.00	0.00	
11,000.0	90.00	90.00	7,076.0	204.3	3,377.5	3,377.5	0.00	0.00	
11,100.0	90.00	90.00	7,076.0	204.3	3,477.5	3,477.5	0.00	0.00	
11,200.0	90.00	90.00	7,076.0	204.3	3,577.5	3,577.5	0.00	0.00	
11,300.0	90.00	90.00	7,076.0	204.3	3,677.5	3,677.5	0.00	0.00	
11,400.0	90.00	90.00	7,076.0	204.3	3,777.5	3,777.5	0.00	0.00	
11,500.0	90.00	90.00	7,076.0	204.3	3,877.5	3,877.5	0.00	0.00	
11,600.0	90.00	90.00	7,076.0	204.3	3,977.5	3,977.5	0.00	0.00	
11,669.1	90.00	90.00	7,076.0	204.3	4,046.6	4,046.6	0.00	0.00	TD at 11669.1

Targets									
Target Name	Dip Angle (°)	Dip Dir. (°)	TVD (ft)	+N/-S (ft)	+E/-W (ft)	Northing (ft)	Easting (ft)	Latitude	Longitude
- hit/miss target									
- Shape									
Bohrer 2D-19H-E368 PE	0.00	0.00	7,076.0	204.3	4,046.6	1,321,490.95	3,129,039.83	40.214960	-105.037960
- plan hits target center									
- Point									

Cathedral Energy Services

Planning Report

Database:	USA EDM 5000 Multi Users DB	Local Co-ordinate Reference:	Well Bohrer 2D-19H-E368
Company:	EnCana Oil & Gas (USA) Inc	TVD Reference:	WELL @ 5084.0ft (Original Well Elev)
Project:	DJ Wattenberg	MD Reference:	WELL @ 5084.0ft (Original Well Elev)
Site:	S19-T3N-R68W (Bohrer)	North Reference:	True
Well:	Bohrer 2D-19H-E368	Survey Calculation Method:	Minimum Curvature
Wellbore:	Hz		
Design:	Plan #1		

Formations

Measured Depth (ft)	Vertical Depth (ft)	Name	Lithology	Dip (°)	Dip Direction (°)
284.0	284.0	Fox Hills - BASE			
3,779.5	3,754.0	Sussex			
4,000.6	3,973.0	Sussex Marker			
4,236.8	4,207.0	Shannon			
5,743.7	5,700.0	Teepee Buttes (*if present)			
6,758.2	6,703.0	Sharon Springs			
6,855.7	6,791.0	Niobrara			
6,926.7	6,850.0	B Chalk			
6,964.1	6,879.0	B Marl			
7,019.5	6,919.0	C Chalk			
7,065.1	6,949.0	C Marl			
7,267.9	7,046.0	Ft. Hayes			
7,346.9	7,066.0	Codell			

Plan Annotations

Measured Depth (ft)	Vertical Depth (ft)	Local Coordinates		Comment
		+N/-S (ft)	+E/-W (ft)	
500.0	500.0	0.0	0.0	KOP @ 500'
1,280.2	1,277.8	12.8	-51.5	EOB; Inc=7.8°
6,478.4	6,427.9	182.9	-736.3	Start build/turn @ 6478' MD
7,454.1	7,076.0	204.3	-168.4	LP @ 7076' TVD; 90°
11,669.1	7,076.0	204.3	4,046.6	TD at 11669.1

EnCana Oil & Gas (USA) Inc

DJ Wattenberg

S19-T3N-R68W (Bohrer)

Bohrer 2D-19H-E368

Hz

Plan #1

Anticollision Report

30 June, 2013

Cathedral Energy Services

Anticollision Report

Company:	EnCana Oil & Gas (USA) Inc	Local Co-ordinate Reference:	Well Bohrer 2D-19H-E368
Project:	DJ Wattenberg	TVD Reference:	WELL @ 5084.0ft (Original Well Elev)
Reference Site:	S19-T3N-R68W (Bohrer)	MD Reference:	WELL @ 5084.0ft (Original Well Elev)
Site Error:	0.0ft	North Reference:	True
Reference Well:	Bohrer 2D-19H-E368	Survey Calculation Method:	Minimum Curvature
Well Error:	0.0ft	Output errors are at	2.00 sigma
Reference Wellbore	Hz	Database:	USA EDM 5000 Multi Users DB
Reference Design:	Plan #1	Offset TVD Reference:	Offset Datum

Reference	Plan #1		
Filter type:	NO GLOBAL FILTER: Using user defined selection & filtering criteria		
Interpolation Method:	MD Interval 100.0ft	Error Model:	Systematic Ellipse
Depth Range:	Unlimited	Scan Method:	Closest Approach 3D
Results Limited by:	Maximum center-center distance of 500.0ft	Error Surface:	Elliptical Conic
Warning Levels Evaluated at:	2.00 Sigma		

Survey Tool Program		Date	6/30/2013		
From (ft)	To (ft)	Survey (Wellbore)	Tool Name	Description	
0.0	11,669.1	Plan #1 (Hz)	Geolink MWD	Geolink MWD	

Summary						
Site Name	Reference Measured Depth (ft)	Offset Measured Depth (ft)	Distance Between Centres (ft)	Distance Between Ellipses (ft)	Separation Factor	Warning
Offset Well - Wellbore - Design						
S19-T3N-R68W (Bohrer)						
Bohrer 2A-19H-E368 - Hz - Plan #1	166.3	167.3	29.1	28.6	58.865	CC
Bohrer 2A-19H-E368 - Hz - Plan #1	200.0	201.0	29.1	28.5	47.572	ES
Bohrer 2A-19H-E368 - Hz - Plan #1	800.0	796.8	54.2	51.4	19.818	SF
Bohrer 2B-19H-E368 - Hz - Plan #1	266.3	267.3	18.2	17.4	21.572	CC
Bohrer 2B-19H-E368 - Hz - Plan #1	300.0	301.0	18.2	17.2	18.936	ES
Bohrer 2B-19H-E368 - Hz - Plan #1	700.0	699.6	28.3	25.9	11.953	SF
Bohrer 2C-19H-E368 - Hz - Plan #1	400.0	400.0	7.3	6.0	5.566	CC, ES
Bohrer 2C-19H-E368 - Hz - Plan #1	11,669.1	11,477.9	411.0	224.6	2.205	SF
Bohrer 2E-19H-E368 - Hz - Plan #1	500.0	500.0	10.9	9.3	6.591	CC
Bohrer 2E-19H-E368 - Hz - Plan #1	600.0	600.0	11.2	9.2	5.565	ES
Bohrer 2E-19H-E368 - Hz - Plan #1	11,669.1	11,454.6	411.1	224.8	2.207	SF
Bohrer 2F-19H-E368 - Hz - Plan #1	500.0	500.0	21.9	20.2	13.182	CC, ES
Bohrer 2F-19H-E368 - Hz - Plan #1	800.0	799.3	27.6	24.9	10.146	SF
Bohrer 2G-19H-E368 - Hz - Plan #1	400.0	400.0	29.1	27.8	22.263	CC, ES
Bohrer 2G-19H-E368 - Hz - Plan #1	800.0	798.1	40.9	38.1	14.973	SF
Bohrer 2H-19H-E368 - Hz - Plan #1	300.0	299.0	40.1	39.1	41.820	CC, ES
Bohrer 2H-19H-E368 - Hz - Plan #1	800.0	795.1	59.7	56.9	21.876	SF
Bohrer 2I-19H-E368 - Hz - Plan #1	200.0	199.0	51.0	50.4	83.727	CC, ES
Bohrer 2I-19H-E368 - Hz - Plan #1	800.0	792.3	80.4	77.6	29.474	SF
BOHRER TRUST 21-19 (EXISTING) - ENCANA WELL - S	8,760.3	7,324.5	469.0	403.2	7.132	CC, ES
BOHRER TRUST 21-19 (EXISTING) - ENCANA WELL - S	8,800.0	7,323.5	470.7	404.0	7.059	SF
BOYD 3-19 (EXISTING) - ENCANA WELL - SURVEYS						Out of range
Boyd 3B-19H-M368 - Hz - Plan #1						Out of range
Boyd 3C-19H-M368 - Hz - Plan #1						Out of range
Boyd 3D-19H-M368 - Hz - Plan #1						Out of range
Boyd 3E-19H-M368 - Hz - Plan #1						Out of range
Boyd 3F-19H-M368 - Hz - Plan #1						Out of range
Boyd 3G-19H-M368 - Hz - Plan #1						Out of range

Cathedral Energy Services

Anticollision Report

Company:	EnCana Oil & Gas (USA) Inc	Local Co-ordinate Reference:	Well Bohrer 2D-19H-E368
Project:	DJ Wattenberg	TVD Reference:	WELL @ 5084.0ft (Original Well Elev)
Reference Site:	S19-T3N-R68W (Bohrer)	MD Reference:	WELL @ 5084.0ft (Original Well Elev)
Site Error:	0.0ft	North Reference:	True
Reference Well:	Bohrer 2D-19H-E368	Survey Calculation Method:	Minimum Curvature
Well Error:	0.0ft	Output errors are at	2.00 sigma
Reference Wellbore	Hz	Database:	USA EDM 5000 Multi Users DB
Reference Design:	Plan #1	Offset TVD Reference:	Offset Datum

Offset Design S19-T3N-R68W (Bohrer) - Bohrer 2A-19H-E368 - Hz - Plan #1													Offset Site Error:	0.0 ft
Survey Program: 0-Geolink MWD													Offset Well Error:	0.0 ft
Reference		Offset		Semi Major Axis			Distance				Total Uncertainty Axis	Separation Factor	Warning	
Measured Depth (ft)	Vertical Depth (ft)	Measured Depth (ft)	Vertical Depth (ft)	Reference (ft)	Offset (ft)	Highside Toolface (°)	Offset Wellbore Centre +N/-S (ft)	+E/-W (ft)	Between Centres (ft)	Between Ellipses (ft)				
0.0	0.0	1.0	1.0	0.0	0.0	0.00	29.1	0.0	29.1					
100.0	100.0	101.0	101.0	0.1	0.1	0.00	29.1	0.0	29.1	28.9	0.26	110.580		
166.3	166.3	167.3	167.3	0.2	0.2	0.00	29.1	0.0	29.1	28.6	0.50	58.865 CC		
200.0	200.0	201.0	201.0	0.3	0.3	0.00	29.1	0.0	29.1	28.5	0.61	47.572 ES		
300.0	300.0	300.6	300.6	0.5	0.5	-0.94	29.9	-0.5	29.9	28.9	0.96	31.070		
400.0	400.0	400.0	400.0	0.7	0.7	-3.47	32.0	-1.9	32.1	30.8	1.31	24.427		
500.0	500.0	499.5	499.3	0.8	0.8	-6.97	35.6	-4.4	35.9	34.3	1.68	21.448		
600.0	600.0	598.7	598.4	1.0	1.0	66.35	40.7	-7.7	41.1	39.1	2.01	20.425		
700.0	700.0	697.8	697.2	1.2	1.3	65.33	47.1	-12.0	47.2	44.8	2.37	19.928		
800.0	799.9	796.8	795.7	1.4	1.5	65.49	54.9	-17.3	54.2	51.4	2.73	19.818 SF		
900.0	899.7	895.5	893.8	1.6	1.7	66.42	64.2	-23.5	62.0	58.9	3.11	19.925		
1,000.0	999.4	994.1	991.6	1.8	2.0	67.82	74.8	-30.6	70.7	67.2	3.51	20.151		
1,100.0	1,098.9	1,092.5	1,088.9	2.0	2.3	69.49	86.8	-38.6	80.4	76.4	3.93	20.433		
1,200.0	1,198.3	1,190.6	1,185.6	2.2	2.6	71.28	100.1	-47.6	91.0	86.6	4.39	20.726		
1,300.0	1,297.4	1,288.4	1,281.9	2.5	3.0	73.11	114.8	-57.4	102.7	97.8	4.89	21.018		
1,400.0	1,396.5	1,385.9	1,377.5	2.7	3.3	74.44	130.7	-68.1	115.8	110.4	5.40	21.427		
1,500.0	1,495.6	1,483.1	1,472.4	3.0	3.7	75.10	148.0	-79.7	130.3	124.3	5.93	21.971		
1,600.0	1,594.6	1,579.9	1,566.6	3.3	4.1	75.26	166.5	-92.1	146.2	139.7	6.46	22.624		
1,700.0	1,693.7	1,678.3	1,662.1	3.6	4.6	75.20	186.1	-105.2	162.9	155.9	7.00	23.272		
1,800.0	1,792.8	1,776.9	1,757.9	3.9	5.0	75.15	205.8	-118.4	179.6	172.1	7.54	23.813		
1,900.0	1,891.9	1,875.5	1,853.6	4.1	5.4	75.10	225.4	-131.6	196.3	188.2	8.09	24.269		
2,000.0	1,990.9	1,974.1	1,949.3	4.4	5.9	75.07	245.1	-144.7	213.1	204.4	8.64	24.659		
2,100.0	2,090.0	2,072.7	2,045.0	4.7	6.3	75.04	264.7	-157.9	229.8	220.6	9.19	24.995		
2,200.0	2,189.1	2,171.3	2,140.7	5.0	6.7	75.01	284.4	-171.1	246.5	236.8	9.75	25.287		
2,300.0	2,288.2	2,269.9	2,236.4	5.3	7.2	74.99	304.0	-184.2	263.2	252.9	10.30	25.544		
2,400.0	2,387.2	2,368.5	2,332.1	5.6	7.6	74.96	323.7	-197.4	279.9	269.1	10.86	25.770		
2,500.0	2,486.3	2,467.1	2,427.8	5.9	8.1	74.95	343.4	-210.6	296.7	285.2	11.42	25.972		
2,600.0	2,585.4	2,565.7	2,523.5	6.2	8.5	74.93	363.0	-223.8	313.4	301.4	11.98	26.152		
2,700.0	2,684.4	2,664.2	2,619.3	6.4	9.0	74.92	382.7	-236.9	330.1	317.6	12.54	26.315		
2,800.0	2,783.5	2,762.8	2,715.0	6.7	9.4	74.90	402.3	-250.1	346.8	333.7	13.11	26.462		
2,900.0	2,882.6	2,861.4	2,810.7	7.0	9.9	74.89	422.0	-263.3	363.6	349.9	13.67	26.595		
3,000.0	2,981.7	2,960.0	2,906.4	7.3	10.3	74.88	441.6	-276.4	380.3	366.0	14.23	26.716		
3,100.0	3,080.7	3,058.6	3,002.1	7.6	10.7	74.87	461.3	-289.6	397.0	382.2	14.80	26.827		
3,200.0	3,179.8	3,157.2	3,097.8	7.9	11.2	74.86	480.9	-302.8	413.7	398.4	15.36	26.930		
3,300.0	3,278.9	3,255.8	3,193.5	8.2	11.6	74.85	500.6	-316.0	430.4	414.5	15.93	27.024		
3,400.0	3,378.0	3,354.4	3,289.2	8.5	12.1	74.84	520.2	-329.1	447.2	430.7	16.49	27.111		
3,500.0	3,477.0	3,453.0	3,384.9	8.8	12.5	74.84	539.9	-342.3	463.9	446.8	17.06	27.192		
3,600.0	3,576.1	3,551.6	3,480.7	9.1	13.0	74.83	559.5	-355.5	480.6	463.0	17.63	27.267		
3,700.0	3,675.2	3,650.2	3,576.4	9.4	13.4	74.82	579.2	-368.6	497.3	479.1	18.19	27.336		

Cathedral Energy Services

Anticollision Report

Company:	EnCana Oil & Gas (USA) Inc	Local Co-ordinate Reference:	Well Bohrer 2D-19H-E368
Project:	DJ Wattenberg	TVD Reference:	WELL @ 5084.0ft (Original Well Elev)
Reference Site:	S19-T3N-R68W (Bohrer)	MD Reference:	WELL @ 5084.0ft (Original Well Elev)
Site Error:	0.0ft	North Reference:	True
Reference Well:	Bohrer 2D-19H-E368	Survey Calculation Method:	Minimum Curvature
Well Error:	0.0ft	Output errors are at	2.00 sigma
Reference Wellbore	Hz	Database:	USA EDM 5000 Multi Users DB
Reference Design:	Plan #1	Offset TVD Reference:	Offset Datum

Offset Design S19-T3N-R68W (Bohrer) - Bohrer 2B-19H-E368 - Hz - Plan #1													Offset Site Error:	0.0 ft
Survey Program: O-Geolink MWD													Offset Well Error:	0.0 ft
Reference		Offset		Semi Major Axis			Distance				Total Uncertainty Axis	Separation Factor	Warning	
Measured Depth (ft)	Vertical Depth (ft)	Measured Depth (ft)	Vertical Depth (ft)	Reference (ft)	Offset (ft)	Highside Toolface (°)	Offset Wellbore Centre +N/-S (ft)	+E/-W (ft)	Between Centres (ft)	Between Ellipses (ft)				
0.0	0.0	1.0	1.0	0.0	0.0	0.00	18.2	0.0	18.2					
100.0	100.0	101.0	101.0	0.1	0.1	0.00	18.2	0.0	18.2	17.9	0.26	69.097		
200.0	200.0	201.0	201.0	0.3	0.3	0.00	18.2	0.0	18.2	17.6	0.61	29.725		
266.3	266.3	267.3	267.3	0.4	0.4	0.00	18.2	0.0	18.2	17.4	0.84	21.572 CC		
300.0	300.0	301.0	301.0	0.5	0.5	0.00	18.2	0.0	18.2	17.2	0.96	18.936 ES		
400.0	400.0	400.8	400.7	0.7	0.7	-1.83	18.9	-0.6	18.9	17.6	1.31	14.396		
500.0	500.0	500.5	500.4	0.8	0.8	-6.53	20.8	-2.4	20.9	19.3	1.66	12.584		
600.0	600.0	600.0	599.9	1.0	1.0	65.33	24.0	-5.3	24.2	22.2	2.01	12.033		
700.0	700.0	699.6	699.3	1.2	1.2	63.56	28.4	-9.5	28.3	25.9	2.37	11.953 SF		
800.0	799.9	799.0	798.4	1.4	1.4	63.44	34.2	-14.7	33.1	30.4	2.73	12.126		
900.0	899.7	898.3	897.2	1.6	1.7	64.35	41.1	-21.2	38.7	35.6	3.11	12.436		
1,000.0	999.4	997.5	995.8	1.8	1.9	65.86	49.4	-28.8	45.0	41.5	3.51	12.817		
1,100.0	1,098.9	1,096.5	1,094.0	2.0	2.2	67.68	58.8	-37.5	52.1	48.1	3.94	13.226		
1,200.0	1,198.3	1,195.4	1,191.8	2.2	2.5	69.63	69.5	-47.4	60.0	55.6	4.40	13.634		
1,300.0	1,297.4	1,294.1	1,289.1	2.5	2.8	71.58	81.4	-58.4	68.7	63.8	4.90	14.030		
1,400.0	1,396.5	1,392.6	1,386.0	2.7	3.1	72.72	94.5	-70.5	78.7	73.3	5.42	14.526		
1,500.0	1,495.6	1,492.0	1,483.6	3.0	3.5	73.23	108.4	-83.3	89.4	83.4	5.95	15.034		
1,600.0	1,594.6	1,591.5	1,581.2	3.3	3.8	73.63	122.3	-96.1	100.1	93.6	6.48	15.440		
1,700.0	1,693.7	1,690.9	1,678.8	3.6	4.2	73.96	136.1	-109.0	110.8	103.8	7.03	15.769		
1,800.0	1,792.8	1,790.3	1,776.4	3.9	4.5	74.22	150.0	-121.8	121.5	113.9	7.57	16.040		
1,900.0	1,891.9	1,889.7	1,874.0	4.1	4.9	74.45	163.9	-134.6	132.2	124.1	8.13	16.267		
2,000.0	1,990.9	1,989.1	1,971.7	4.4	5.3	74.64	177.8	-147.4	142.9	134.2	8.68	16.458		
2,100.0	2,090.0	2,088.6	2,069.3	4.7	5.6	74.80	191.7	-160.3	153.6	144.4	9.24	16.621		
2,200.0	2,189.1	2,188.0	2,166.9	5.0	6.0	74.94	205.6	-173.1	164.3	154.5	9.80	16.762		
2,300.0	2,288.2	2,287.4	2,264.5	5.3	6.4	75.07	219.4	-185.9	175.0	164.7	10.37	16.885		
2,400.0	2,387.2	2,386.8	2,362.1	5.6	6.7	75.18	233.3	-198.8	185.7	174.8	10.93	16.992		
2,500.0	2,486.3	2,486.3	2,459.7	5.9	7.1	75.28	247.2	-211.6	196.4	184.9	11.50	17.087		
2,600.0	2,585.4	2,585.7	2,557.3	6.2	7.5	75.37	261.1	-224.4	207.2	195.1	12.06	17.171		
2,700.0	2,684.4	2,685.1	2,654.9	6.4	7.8	75.45	275.0	-237.2	217.9	205.2	12.63	17.246		
2,800.0	2,783.5	2,784.5	2,752.5	6.7	8.2	75.52	288.9	-250.1	228.6	215.4	13.20	17.314		
2,900.0	2,882.6	2,884.0	2,850.2	7.0	8.6	75.58	302.7	-262.9	239.3	225.5	13.77	17.375		
3,000.0	2,981.7	2,983.4	2,947.8	7.3	8.9	75.64	316.6	-275.7	250.0	235.7	14.34	17.430		
3,100.0	3,080.7	3,082.8	3,045.4	7.6	9.3	75.70	330.5	-288.5	260.7	245.8	14.91	17.480		
3,200.0	3,179.8	3,182.2	3,143.0	7.9	9.7	75.75	344.4	-301.4	271.4	255.9	15.49	17.526		
3,300.0	3,278.9	3,281.7	3,240.6	8.2	10.1	75.80	358.3	-314.2	282.1	266.1	16.06	17.569		
3,400.0	3,378.0	3,381.1	3,338.2	8.5	10.4	75.84	372.2	-327.0	292.9	276.2	16.63	17.608		
3,500.0	3,477.0	3,480.5	3,435.8	8.8	10.8	75.88	386.0	-339.9	303.6	286.4	17.21	17.643		
3,600.0	3,576.1	3,579.9	3,533.4	9.1	11.2	75.92	399.9	-352.7	314.3	296.5	17.78	17.677		
3,700.0	3,675.2	3,679.4	3,631.0	9.4	11.6	75.95	413.8	-365.5	325.0	306.6	18.35	17.707		
3,800.0	3,774.3	3,778.8	3,728.7	9.7	11.9	75.99	427.7	-378.3	335.7	316.8	18.93	17.736		
3,900.0	3,873.3	3,878.2	3,826.3	10.0	12.3	76.02	441.6	-391.2	346.4	326.9	19.50	17.763		
4,000.0	3,972.4	3,977.6	3,923.9	10.3	12.7	76.05	455.5	-404.0	357.1	337.1	20.08	17.788		
4,100.0	4,071.5	4,077.1	4,021.5	10.5	13.0	76.07	469.3	-416.8	367.9	347.2	20.65	17.811		
4,200.0	4,170.6	4,176.5	4,119.1	10.8	13.4	76.10	483.2	-429.6	378.6	357.3	21.23	17.833		
4,300.0	4,269.6	4,275.9	4,216.7	11.1	13.8	76.12	497.1	-442.5	389.3	367.5	21.80	17.854		
4,400.0	4,368.7	4,375.3	4,314.3	11.4	14.2	76.15	511.0	-455.3	400.0	377.6	22.38	17.873		
4,500.0	4,467.8	4,474.8	4,411.9	11.7	14.5	76.17	524.9	-468.1	410.7	387.8	22.96	17.892		
4,600.0	4,566.9	4,574.2	4,509.5	12.0	14.9	76.19	538.7	-481.0	421.4	397.9	23.53	17.909		
4,700.0	4,665.9	4,673.6	4,607.2	12.3	15.3	76.21	552.6	-493.8	432.1	408.0	24.11	17.925		
4,800.0	4,765.0	4,773.0	4,704.8	12.6	15.7	76.23	566.5	-506.6	442.9	418.2	24.68	17.941		
4,900.0	4,864.1	4,872.5	4,802.4	12.9	16.0	76.25	580.4	-519.4	453.6	428.3	25.26	17.956		
5,000.0	4,963.2	4,971.9	4,900.0	13.2	16.4	76.26	594.3	-532.3	464.3	438.5	25.84	17.970		

CC - Min centre to center distance or convergent point, SF - min separation factor, ES - min ellipse separation

Cathedral Energy Services

Anticollision Report

Company:	EnCana Oil & Gas (USA) Inc	Local Co-ordinate Reference:	Well Bohrer 2D-19H-E368
Project:	DJ Wattenberg	TVD Reference:	WELL @ 5084.0ft (Original Well Elev)
Reference Site:	S19-T3N-R68W (Bohrer)	MD Reference:	WELL @ 5084.0ft (Original Well Elev)
Site Error:	0.0ft	North Reference:	True
Reference Well:	Bohrer 2D-19H-E368	Survey Calculation Method:	Minimum Curvature
Well Error:	0.0ft	Output errors are at	2.00 sigma
Reference Wellbore	Hz	Database:	USA EDM 5000 Multi Users DB
Reference Design:	Plan #1	Offset TVD Reference:	Offset Datum

Offset Design S19-T3N-R68W (Bohrer) - Bohrer 2B-19H-E368 - Hz - Plan #1												Offset Site Error:	0.0 ft
Survey Program: 0-Geolink MWD												Offset Well Error:	0.0 ft
Reference		Offset		Semi Major Axis		Distance							
Measured Depth (ft)	Vertical Depth (ft)	Measured Depth (ft)	Vertical Depth (ft)	Reference (ft)	Offset (ft)	Highside Toolface (°)	Offset Wellbore Centre +N/-S (ft)	+E/-W (ft)	Between Centres (ft)	Between Ellipses (ft)	Total Uncertainty Axis	Separation Factor	Warning
5,100.0	5,062.2	5,071.3	4,997.6	13.5	16.8	76.28	608.2	-545.1	475.0	448.6	26.41	17.983	
5,200.0	5,161.3	5,170.7	5,095.2	13.8	17.2	76.30	622.0	-557.9	485.7	458.7	26.99	17.996	
5,300.0	5,260.4	5,270.1	5,192.8	14.1	17.5	76.31	635.9	-570.7	496.4	468.9	27.57	18.008	

Cathedral Energy Services

Anticollision Report

Company:	EnCana Oil & Gas (USA) Inc	Local Co-ordinate Reference:	Well Bohrer 2D-19H-E368
Project:	DJ Wattenberg	TVD Reference:	WELL @ 5084.0ft (Original Well Elev)
Reference Site:	S19-T3N-R68W (Bohrer)	MD Reference:	WELL @ 5084.0ft (Original Well Elev)
Site Error:	0.0ft	North Reference:	True
Reference Well:	Bohrer 2D-19H-E368	Survey Calculation Method:	Minimum Curvature
Well Error:	0.0ft	Output errors are at	2.00 sigma
Reference Wellbore	Hz	Database:	USA EDM 5000 Multi Users DB
Reference Design:	Plan #1	Offset TVD Reference:	Offset Datum

Offset Design S19-T3N-R68W (Bohrer) - Bohrer 2C-19H-E368 - Hz - Plan #1													Offset Site Error:	0.0 ft
Survey Program: O-Geolink MWD													Offset Well Error:	0.0 ft
Reference		Offset		Semi Major Axis			Distance							Warning
Measured Depth (ft)	Vertical Depth (ft)	Measured Depth (ft)	Vertical Depth (ft)	Reference (ft)	Offset (ft)	Highside Toolface (°)	Offset Wellbore Centre +N/-S (ft)	+E/-W (ft)	Between Centres (ft)	Between Ellipses (ft)	Total Uncertainty Axis	Separation Factor		
0.0	0.0	0.0	0.0	0.0	0.0	0.00	7.3	0.0	7.3					
100.0	100.0	100.0	100.0	0.1	0.1	0.00	7.3	0.0	7.3	7.0	0.26	27.829		
200.0	200.0	200.0	200.0	0.3	0.3	0.00	7.3	0.0	7.3	6.7	0.61	11.927		
300.0	300.0	300.0	300.0	0.5	0.5	0.00	7.3	0.0	7.3	6.3	0.96	7.590		
400.0	400.0	400.0	400.0	0.7	0.7	0.00	7.3	0.0	7.3	6.0	1.31	5.566 CC, ES		
500.0	500.0	499.9	499.9	0.8	0.8	-5.35	7.8	-0.7	7.8	6.1	1.66	4.704		
600.0	600.0	599.8	599.8	1.0	1.0	63.13	9.2	-2.9	9.2	7.2	2.01	4.594		
700.0	700.0	699.6	699.5	1.2	1.2	59.68	11.6	-6.5	11.2	8.9	2.36	4.747		
800.0	799.9	799.5	799.1	1.4	1.4	58.94	15.0	-11.6	13.7	11.0	2.73	5.017		
900.0	899.7	899.2	898.6	1.6	1.6	59.77	19.3	-18.1	16.6	13.5	3.10	5.344		
1,000.0	999.4	998.9	997.8	1.8	1.8	61.43	24.5	-26.1	19.9	16.4	3.50	5.698		
1,100.0	1,098.9	1,098.6	1,096.8	2.0	2.1	63.45	30.7	-35.5	23.8	19.9	3.93	6.059		
1,200.0	1,198.3	1,198.1	1,195.6	2.2	2.3	65.59	37.9	-46.3	28.1	23.7	4.39	6.412		
1,300.0	1,297.4	1,297.7	1,294.0	2.5	2.6	67.65	46.0	-58.6	33.0	28.1	4.89	6.753		
1,400.0	1,396.5	1,397.3	1,392.3	2.7	2.9	68.33	54.8	-72.0	38.7	33.3	5.40	7.158		
1,500.0	1,495.6	1,497.2	1,490.8	3.0	3.2	68.69	63.8	-85.6	44.4	38.5	5.92	7.500		
1,600.0	1,594.6	1,597.0	1,589.3	3.3	3.5	68.96	72.8	-99.2	50.2	43.7	6.45	7.777		
1,700.0	1,693.7	1,696.8	1,687.8	3.6	3.9	69.17	81.8	-112.9	55.9	49.0	6.99	8.005		
1,800.0	1,792.8	1,796.7	1,786.3	3.9	4.2	69.35	90.8	-126.5	61.7	54.2	7.53	8.194		
1,900.0	1,891.9	1,896.5	1,884.8	4.1	4.5	69.49	99.8	-140.1	67.5	59.4	8.08	8.355		
2,000.0	1,990.9	1,996.3	1,983.3	4.4	4.8	69.62	108.8	-153.7	73.2	64.6	8.62	8.491		
2,100.0	2,090.0	2,096.2	2,081.8	4.7	5.1	69.72	117.8	-167.3	79.0	69.8	9.18	8.609		
2,200.0	2,189.1	2,196.0	2,180.3	5.0	5.5	69.81	126.8	-180.9	84.8	75.0	9.73	8.712		
2,300.0	2,288.2	2,295.8	2,278.8	5.3	5.8	69.89	135.8	-194.6	90.5	80.2	10.28	8.802		
2,400.0	2,387.2	2,395.7	2,377.3	5.6	6.1	69.96	144.8	-208.2	96.3	85.4	10.84	8.882		
2,500.0	2,486.3	2,495.5	2,475.7	5.9	6.5	70.02	153.8	-221.8	102.1	90.7	11.40	8.952		
2,600.0	2,585.4	2,595.3	2,574.2	6.2	6.8	70.08	162.8	-235.4	107.8	95.9	11.96	9.016		
2,700.0	2,684.4	2,695.2	2,672.7	6.4	7.1	70.13	171.8	-249.0	113.6	101.1	12.52	9.073		
2,800.0	2,783.5	2,795.0	2,771.2	6.7	7.5	70.17	180.7	-262.6	119.4	106.3	13.08	9.124		
2,900.0	2,882.6	2,894.8	2,869.7	7.0	7.8	70.21	189.7	-276.2	125.1	111.5	13.64	9.171		
3,000.0	2,981.7	2,994.7	2,968.2	7.3	8.1	70.25	198.7	-289.9	130.9	116.7	14.21	9.213		
3,100.0	3,080.7	3,094.5	3,066.7	7.6	8.5	70.28	207.7	-303.5	136.6	121.9	14.77	9.252		
3,200.0	3,179.8	3,194.3	3,165.2	7.9	8.8	70.31	216.7	-317.1	142.4	127.1	15.33	9.288		
3,300.0	3,278.9	3,294.2	3,263.7	8.2	9.1	70.34	225.7	-330.7	148.2	132.3	15.90	9.321		
3,400.0	3,378.0	3,394.0	3,362.2	8.5	9.5	70.37	234.7	-344.3	153.9	137.5	16.46	9.351		
3,500.0	3,477.0	3,493.8	3,460.7	8.8	9.8	70.39	243.7	-357.9	159.7	142.7	17.03	9.380		
3,600.0	3,576.1	3,593.7	3,559.1	9.1	10.1	70.42	252.7	-371.6	165.5	147.9	17.59	9.406		
3,700.0	3,675.2	3,693.5	3,657.6	9.4	10.5	70.44	261.7	-385.2	171.2	153.1	18.16	9.430		
3,800.0	3,774.3	3,793.3	3,756.1	9.7	10.8	70.46	270.7	-398.8	177.0	158.3	18.72	9.453		
3,900.0	3,873.3	3,893.2	3,854.6	10.0	11.1	70.48	279.7	-412.4	182.8	163.5	19.29	9.474		
4,000.0	3,972.4	3,993.0	3,953.1	10.3	11.5	70.49	288.7	-426.0	188.5	168.7	19.86	9.494		
4,100.0	4,071.5	4,092.8	4,051.6	10.5	11.8	70.51	297.6	-439.6	194.3	173.9	20.42	9.513		
4,200.0	4,170.6	4,192.7	4,150.1	10.8	12.1	70.53	306.6	-453.2	200.1	179.1	20.99	9.531		
4,300.0	4,269.6	4,292.5	4,248.6	11.1	12.5	70.54	315.6	-466.9	205.8	184.3	21.56	9.548		
4,400.0	4,368.7	4,392.3	4,347.1	11.4	12.8	70.56	324.6	-480.5	211.6	189.5	22.13	9.563		
4,500.0	4,467.8	4,492.2	4,445.6	11.7	13.1	70.57	333.6	-494.1	217.4	194.7	22.69	9.578		
4,600.0	4,566.9	4,592.0	4,544.1	12.0	13.5	70.58	342.6	-507.7	223.1	199.9	23.26	9.592		
4,700.0	4,665.9	4,691.8	4,642.6	12.3	13.8	70.59	351.6	-521.3	228.9	205.1	23.83	9.606		
4,800.0	4,765.0	4,791.7	4,741.0	12.6	14.1	70.60	360.6	-534.9	234.7	210.3	24.40	9.618		
4,900.0	4,864.1	4,891.5	4,839.5	12.9	14.5	70.61	369.6	-548.6	240.4	215.5	24.97	9.630		
5,000.0	4,963.2	4,991.3	4,938.0	13.2	14.8	70.62	378.6	-562.2	246.2	220.7	25.53	9.642		
5,100.0	5,062.2	5,091.2	5,036.5	13.5	15.1	70.63	387.6	-575.8	252.0	225.9	26.10	9.653		

CC - Min centre to center distance or convergent point, SF - min separation factor, ES - min ellipse separation

Cathedral Energy Services

Anticollision Report

Company:	EnCana Oil & Gas (USA) Inc	Local Co-ordinate Reference:	Well Bohrer 2D-19H-E368
Project:	DJ Wattenberg	TVD Reference:	WELL @ 5084.0ft (Original Well Elev)
Reference Site:	S19-T3N-R68W (Bohrer)	MD Reference:	WELL @ 5084.0ft (Original Well Elev)
Site Error:	0.0ft	North Reference:	True
Reference Well:	Bohrer 2D-19H-E368	Survey Calculation Method:	Minimum Curvature
Well Error:	0.0ft	Output errors are at	2.00 sigma
Reference Wellbore	Hz	Database:	USA EDM 5000 Multi Users DB
Reference Design:	Plan #1	Offset TVD Reference:	Offset Datum

Offset Design S19-T3N-R68W (Bohrer) - Bohrer 2C-19H-E368 - Hz - Plan #1												Offset Site Error:	0.0 ft
Survey Program: O-Geolink MWD												Offset Well Error:	0.0 ft
Reference		Offset		Semi Major Axis		Distance							
Measured Depth (ft)	Vertical Depth (ft)	Measured Depth (ft)	Vertical Depth (ft)	Reference (ft)	Offset (ft)	Highside Toolface (°)	Offset Wellbore Centre +N/-S (ft)	+E/-W (ft)	Between Centres (ft)	Between Ellipses (ft)	Total Uncertainty Axis	Separation Factor	Warning
5,200.0	5,161.3	5,191.0	5,135.0	13.8	15.5	70.64	396.6	-589.4	257.7	231.1	26.67	9.663	
5,300.0	5,260.4	5,290.8	5,233.5	14.1	15.8	70.65	405.6	-603.0	263.5	236.3	27.24	9.673	
5,400.0	5,359.5	5,390.7	5,332.0	14.4	16.1	70.66	414.5	-616.6	269.3	241.4	27.81	9.683	
5,500.0	5,458.5	5,490.5	5,430.5	14.7	16.5	70.67	423.5	-630.2	275.0	246.6	28.38	9.692	
5,600.0	5,557.6	5,590.3	5,529.0	15.0	16.8	70.68	432.5	-643.9	280.8	251.8	28.94	9.701	
5,700.0	5,656.7	5,690.2	5,627.5	15.3	17.1	70.69	441.5	-657.5	286.6	257.0	29.51	9.709	
5,800.0	5,755.8	5,790.0	5,726.0	15.6	17.5	70.69	450.5	-671.1	292.3	262.2	30.08	9.717	
5,900.0	5,854.8	5,889.8	5,824.4	15.8	17.8	70.70	459.5	-684.7	298.1	267.4	30.65	9.725	
6,000.0	5,953.9	5,989.7	5,922.9	16.1	18.2	70.71	468.5	-698.3	303.8	272.6	31.22	9.733	
6,100.0	6,053.0	6,089.5	6,021.4	16.4	18.5	70.71	477.5	-711.9	309.6	277.8	31.79	9.740	
6,200.0	6,152.0	6,189.3	6,119.9	16.7	18.8	70.72	486.5	-725.6	315.4	283.0	32.36	9.747	
6,300.0	6,251.1	6,289.5	6,218.7	17.0	19.2	70.73	495.5	-739.2	321.1	288.2	32.93	9.753	
6,400.0	6,350.2	6,392.9	6,321.5	17.3	19.3	72.60	504.9	-742.7	326.2	292.6	33.65	9.695	
6,500.0	6,449.3	6,489.8	6,417.0	17.6	19.3	72.02	513.6	-729.1	331.7	297.1	34.56	9.597	
6,600.0	6,549.1	6,580.8	6,503.3	17.7	19.1	-60.70	521.5	-701.8	339.8	304.7	35.08	9.687	
6,700.0	6,647.6	6,668.0	6,581.0	17.5	18.7	-70.62	528.6	-663.1	350.0	315.1	34.92	10.022	
6,800.0	6,741.6	6,750.0	6,648.0	17.2	18.4	-69.16	534.7	-616.3	361.5	327.3	34.14	10.589	
6,900.0	6,828.4	6,833.8	6,708.8	16.7	17.9	-66.46	540.3	-559.1	373.2	340.4	32.77	11.388	
7,000.0	6,905.3	6,913.5	6,758.5	16.0	17.4	-63.92	544.8	-496.9	384.3	353.2	31.04	12.380	
7,100.0	6,970.0	6,991.8	6,798.3	15.4	17.0	-61.77	548.4	-429.7	394.1	364.9	29.20	13.497	
7,200.0	7,020.6	7,069.0	6,828.4	14.9	16.7	-60.12	551.2	-358.7	402.0	374.4	27.57	14.580	
7,300.0	7,055.4	7,150.0	6,849.4	14.5	16.3	-58.96	553.1	-280.6	407.6	381.1	26.51	15.377	
7,400.0	7,073.4	7,221.3	6,858.7	14.6	16.1	-58.40	553.9	-209.9	410.6	384.2	26.35	15.584	
7,500.0	7,076.0	7,308.8	6,860.0	15.1	16.0	-58.30	554.1	-122.5	411.0	383.8	27.25	15.087	
7,600.0	7,076.0	7,408.8	6,860.0	16.1	16.4	-58.30	554.1	-22.5	411.0	382.1	28.90	14.223	
7,700.0	7,076.0	7,508.8	6,860.0	17.4	17.8	-58.30	554.1	77.5	411.0	380.0	31.04	13.242	
7,800.0	7,076.0	7,608.8	6,860.0	18.9	19.3	-58.30	554.1	177.5	411.0	377.5	33.58	12.241	
7,900.0	7,076.0	7,708.8	6,860.0	20.7	21.1	-58.30	554.1	277.5	411.0	374.6	36.43	11.283	
8,000.0	7,076.0	7,808.8	6,860.0	22.5	23.0	-58.30	554.1	377.5	411.0	371.5	39.52	10.400	
8,100.0	7,076.0	7,908.8	6,860.0	24.5	24.9	-58.30	554.1	477.5	411.0	368.2	42.81	9.601	
8,200.0	7,076.0	8,008.8	6,860.0	26.5	27.0	-58.30	554.1	577.5	411.0	364.8	46.25	8.888	
8,300.0	7,076.0	8,108.8	6,860.0	28.6	29.1	-58.30	554.1	677.5	411.0	361.2	49.81	8.253	
8,400.0	7,076.0	8,208.8	6,860.0	30.8	31.2	-58.30	554.1	777.5	411.0	357.6	53.46	7.689	
8,500.0	7,076.0	8,308.8	6,860.0	33.0	33.4	-58.30	554.1	877.5	411.0	353.9	57.19	7.187	
8,600.0	7,076.0	8,408.8	6,860.0	35.2	35.7	-58.30	554.1	977.5	411.0	350.1	60.98	6.740	
8,700.0	7,076.0	8,508.8	6,860.0	37.5	37.9	-58.30	554.1	1,077.5	411.0	346.2	64.83	6.340	
8,800.0	7,076.0	8,608.8	6,860.0	39.8	40.2	-58.30	554.1	1,177.5	411.0	342.3	68.72	5.982	
8,900.0	7,076.0	8,708.8	6,860.0	42.1	42.5	-58.30	554.1	1,277.5	411.0	338.4	72.64	5.658	
9,000.0	7,076.0	8,808.8	6,860.0	44.5	44.8	-58.30	554.1	1,377.5	411.0	334.4	76.60	5.366	
9,100.0	7,076.0	8,908.8	6,860.0	46.8	47.1	-58.30	554.1	1,477.5	411.0	330.5	80.58	5.101	
9,200.0	7,076.0	9,008.8	6,860.0	49.2	49.5	-58.30	554.1	1,577.5	411.0	326.5	84.59	4.859	
9,300.0	7,076.0	9,108.8	6,860.0	51.5	51.8	-58.30	554.1	1,677.5	411.0	322.4	88.61	4.639	
9,400.0	7,076.0	9,208.8	6,860.0	53.9	54.2	-58.30	554.1	1,777.5	411.0	318.4	92.66	4.436	
9,500.0	7,076.0	9,308.8	6,860.0	56.3	56.6	-58.30	554.1	1,877.5	411.0	314.3	96.71	4.250	
9,600.0	7,076.0	9,408.8	6,860.0	58.7	59.0	-58.30	554.1	1,977.5	411.0	310.3	100.78	4.078	
9,700.0	7,076.0	9,508.8	6,860.0	61.1	61.4	-58.30	554.1	2,077.5	411.0	306.2	104.86	3.920	
9,800.0	7,076.0	9,608.8	6,860.0	63.5	63.8	-58.30	554.1	2,177.5	411.0	302.1	108.96	3.773	
9,900.0	7,076.0	9,708.8	6,860.0	65.9	66.2	-58.30	554.1	2,277.5	411.0	298.0	113.06	3.636	
10,000.0	7,076.0	9,808.8	6,860.0	68.3	68.6	-58.30	554.1	2,377.5	411.0	293.9	117.16	3.508	
10,100.0	7,076.0	9,908.8	6,860.0	70.8	71.0	-58.30	554.1	2,477.5	411.0	289.8	121.28	3.389	
10,200.0	7,076.0	10,008.8	6,860.0	73.2	73.4	-58.30	554.1	2,577.5	411.0	285.6	125.40	3.278	
10,300.0	7,076.0	10,108.8	6,860.0	75.6	75.8	-58.30	554.1	2,677.5	411.0	281.5	129.53	3.173	

CC - Min centre to center distance or convergent point, SF - min separation factor, ES - min ellipse separation

Cathedral Energy Services

Anticollision Report

Company:	EnCana Oil & Gas (USA) Inc	Local Co-ordinate Reference:	Well Bohrer 2D-19H-E368
Project:	DJ Wattenberg	TVD Reference:	WELL @ 5084.0ft (Original Well Elev)
Reference Site:	S19-T3N-R68W (Bohrer)	MD Reference:	WELL @ 5084.0ft (Original Well Elev)
Site Error:	0.0ft	North Reference:	True
Reference Well:	Bohrer 2D-19H-E368	Survey Calculation Method:	Minimum Curvature
Well Error:	0.0ft	Output errors are at	2.00 sigma
Reference Wellbore	Hz	Database:	USA EDM 5000 Multi Users DB
Reference Design:	Plan #1	Offset TVD Reference:	Offset Datum

Offset Design													S19-T3N-R68W (Bohrer) - Bohrer 2C-19H-E368 - Hz - Plan #1		Offset Site Error:		0.0 ft
Survey Program:													0-Geolink MWD		Offset Well Error:		0.0 ft
Reference		Offset		Semi Major Axis			Distance							Warning			
Measured Depth	Vertical Depth	Measured Depth	Vertical Depth	Reference	Offset	Highside Toolface	Offset Wellbore Centre		Between Centres	Between Ellipses	Total Uncertainty Axis	Separation Factor					
(ft)	(ft)	(ft)	(ft)	(ft)	(ft)	(°)	+N/-S (ft)	+E/-W (ft)	(ft)	(ft)							
10,400.0	7,076.0	10,208.8	6,860.0	78.0	78.2	-58.30	554.1	2,777.5	411.0	277.4	133.67	3.075					
10,500.0	7,076.0	10,308.8	6,860.0	80.5	80.7	-58.30	554.1	2,877.5	411.0	273.2	137.81	2.983					
10,600.0	7,076.0	10,408.8	6,860.0	82.9	83.1	-58.30	554.1	2,977.5	411.0	269.1	141.95	2.896					
10,700.0	7,076.0	10,508.8	6,860.0	85.3	85.5	-58.30	554.1	3,077.5	411.0	264.9	146.10	2.813					
10,800.0	7,076.0	10,608.8	6,860.0	87.8	88.0	-58.30	554.1	3,177.5	411.0	260.8	150.25	2.736					
10,900.0	7,076.0	10,708.8	6,860.0	90.2	90.4	-58.30	554.1	3,277.5	411.0	256.6	154.40	2.662					
11,000.0	7,076.0	10,808.8	6,860.0	92.7	92.8	-58.30	554.1	3,377.5	411.0	252.5	158.56	2.592					
11,100.0	7,076.0	10,908.8	6,860.0	95.1	95.3	-58.30	554.1	3,477.5	411.0	248.3	162.72	2.526					
11,200.0	7,076.0	11,008.8	6,860.0	97.6	97.7	-58.30	554.1	3,577.5	411.0	244.2	166.89	2.463					
11,300.0	7,076.0	11,108.8	6,860.0	100.0	100.2	-58.30	554.1	3,677.5	411.0	240.0	171.05	2.403					
11,400.0	7,076.0	11,208.8	6,860.0	102.4	102.6	-58.30	554.1	3,777.5	411.0	235.8	175.22	2.346					
11,500.0	7,076.0	11,308.8	6,860.0	104.9	105.1	-58.30	554.1	3,877.5	411.0	231.7	179.39	2.291					
11,600.0	7,076.0	11,408.8	6,860.0	107.3	107.5	-58.30	554.1	3,977.5	411.0	227.5	183.56	2.239					
11,669.1	7,076.0	11,477.9	6,860.0	109.0	109.2	-58.30	554.1	4,046.6	411.0	224.6	186.45	2.205 SF					

Cathedral Energy Services

Anticollision Report

Company:	EnCana Oil & Gas (USA) Inc	Local Co-ordinate Reference:	Well Bohrer 2D-19H-E368
Project:	DJ Wattenberg	TVD Reference:	WELL @ 5084.0ft (Original Well Elev)
Reference Site:	S19-T3N-R68W (Bohrer)	MD Reference:	WELL @ 5084.0ft (Original Well Elev)
Site Error:	0.0ft	North Reference:	True
Reference Well:	Bohrer 2D-19H-E368	Survey Calculation Method:	Minimum Curvature
Well Error:	0.0ft	Output errors are at	2.00 sigma
Reference Wellbore	Hz	Database:	USA EDM 5000 Multi Users DB
Reference Design:	Plan #1	Offset TVD Reference:	Offset Datum

Offset Design S19-T3N-R68W (Bohrer) - Bohrer 2E-19H-E368 - Hz - Plan #1													Offset Site Error:	0.0 ft
Survey Program: O-Geolink MWD													Offset Well Error:	0.0 ft
Reference		Offset		Semi Major Axis		Distance								Warning
Measured Depth (ft)	Vertical Depth (ft)	Measured Depth (ft)	Vertical Depth (ft)	Reference (ft)	Offset (ft)	Highside Toolface (°)	Offset Wellbore Centre +N/-S (ft)	+E/-W (ft)	Between Centres (ft)	Between Ellipses (ft)	Total Uncertainty Axis	Separation Factor		
0.0	0.0	0.0	0.0	0.0	0.0	180.00	-10.9	0.0	10.9					
100.0	100.0	100.0	100.0	0.1	0.1	180.00	-10.9	0.0	10.9	10.7	0.26	41.744		
200.0	200.0	200.0	200.0	0.3	0.3	180.00	-10.9	0.0	10.9	10.3	0.61	17.890		
300.0	300.0	300.0	300.0	0.5	0.5	180.00	-10.9	0.0	10.9	10.0	0.96	11.385		
400.0	400.0	400.0	400.0	0.7	0.7	180.00	-10.9	0.0	10.9	9.6	1.31	8.349		
500.0	500.0	500.0	500.0	0.8	0.8	180.00	-10.9	0.0	10.9	9.3	1.66	6.591 CC		
600.0	600.0	600.0	600.0	1.0	1.0	-108.30	-10.9	0.0	11.2	9.2	2.01	5.565 ES		
700.0	700.0	700.0	700.0	1.2	1.2	-115.92	-11.1	-0.9	12.2	9.8	2.36	5.160		
800.0	799.9	800.0	799.9	1.4	1.4	-121.26	-11.5	-3.4	14.0	11.3	2.72	5.159		
900.0	899.7	900.0	899.8	1.6	1.5	-124.36	-12.2	-7.8	16.6	13.5	3.08	5.380		
1,000.0	999.4	1,000.0	999.7	1.8	1.7	-125.76	-13.2	-13.8	19.8	16.4	3.47	5.723		
1,100.0	1,098.9	1,100.0	1,099.4	2.0	1.9	-126.03	-14.4	-21.5	23.7	19.9	3.87	6.129		
1,200.0	1,198.3	1,200.0	1,198.9	2.2	2.1	-125.62	-15.9	-31.0	28.3	23.9	4.30	6.564		
1,300.0	1,297.4	1,300.0	1,298.2	2.5	2.4	-124.79	-17.7	-42.2	33.4	28.6	4.77	6.999		
1,400.0	1,396.5	1,400.0	1,397.4	2.7	2.6	-122.35	-19.8	-55.0	38.5	33.3	5.28	7.300		
1,500.0	1,495.6	1,499.8	1,496.2	3.0	2.9	-118.96	-22.1	-69.1	43.6	37.8	5.82	7.495		
1,600.0	1,594.6	1,599.7	1,595.0	3.3	3.2	-116.25	-24.4	-83.1	48.8	42.4	6.37	7.660		
1,700.0	1,693.7	1,699.5	1,693.9	3.6	3.5	-114.05	-26.6	-97.1	54.0	47.1	6.93	7.802		
1,800.0	1,792.8	1,799.3	1,792.7	3.9	3.7	-112.26	-28.9	-111.2	59.4	51.9	7.49	7.925		
1,900.0	1,891.9	1,899.2	1,891.5	4.1	4.0	-110.75	-31.2	-125.2	64.7	56.7	8.06	8.032		
2,000.0	1,990.9	1,999.0	1,990.3	4.4	4.3	-109.48	-33.5	-139.3	70.2	61.5	8.63	8.127		
2,100.0	2,090.0	2,098.9	2,089.1	4.7	4.6	-108.39	-35.7	-153.3	75.6	66.4	9.21	8.210		
2,200.0	2,189.1	2,198.7	2,188.0	5.0	4.9	-107.45	-38.0	-167.3	81.1	71.3	9.79	8.285		
2,300.0	2,288.2	2,298.6	2,286.8	5.3	5.2	-106.63	-40.3	-181.4	86.6	76.2	10.36	8.351		
2,400.0	2,387.2	2,398.4	2,385.6	5.6	5.5	-105.90	-42.5	-195.4	92.1	81.1	10.95	8.411		
2,500.0	2,486.3	2,498.2	2,484.4	5.9	5.8	-105.26	-44.8	-209.5	97.6	86.1	11.53	8.465		
2,600.0	2,585.4	2,598.1	2,583.3	6.2	6.1	-104.69	-47.1	-223.5	103.1	91.0	12.11	8.515		
2,700.0	2,684.4	2,697.9	2,682.1	6.4	6.4	-104.17	-49.4	-237.6	108.6	95.9	12.69	8.559		
2,800.0	2,783.5	2,797.8	2,780.9	6.7	6.7	-103.71	-51.6	-251.6	114.2	100.9	13.28	8.601		
2,900.0	2,882.6	2,897.6	2,879.7	7.0	7.0	-103.29	-53.9	-265.6	119.7	105.9	13.86	8.638		
3,000.0	2,981.7	2,997.4	2,978.6	7.3	7.3	-102.90	-56.2	-279.7	125.3	110.8	14.45	8.673		
3,100.0	3,080.7	3,097.3	3,077.4	7.6	7.6	-102.55	-58.4	-293.7	130.9	115.8	15.03	8.706		
3,200.0	3,179.8	3,197.1	3,176.2	7.9	7.9	-102.22	-60.7	-307.8	136.4	120.8	15.62	8.735		
3,300.0	3,278.9	3,297.0	3,275.0	8.2	8.2	-101.93	-63.0	-321.8	142.0	125.8	16.20	8.763		
3,400.0	3,378.0	3,396.8	3,373.9	8.5	8.5	-101.65	-65.3	-335.8	147.6	130.8	16.79	8.789		
3,500.0	3,477.0	3,496.7	3,472.7	8.8	8.8	-101.40	-67.5	-349.9	153.1	135.8	17.38	8.813		
3,600.0	3,576.1	3,596.5	3,571.5	9.1	9.1	-101.16	-69.8	-363.9	158.7	140.8	17.96	8.836		
3,700.0	3,675.2	3,696.3	3,670.3	9.4	9.4	-100.94	-72.1	-378.0	164.3	145.8	18.55	8.857		
3,800.0	3,774.3	3,796.2	3,769.1	9.7	9.7	-100.73	-74.3	-392.0	169.9	150.8	19.14	8.877		
3,900.0	3,873.3	3,896.0	3,868.0	10.0	10.0	-100.54	-76.6	-406.1	175.5	155.8	19.72	8.896		
4,000.0	3,972.4	3,995.9	3,966.8	10.3	10.3	-100.35	-78.9	-420.1	181.1	160.8	20.31	8.914		
4,100.0	4,071.5	4,095.7	4,065.6	10.5	10.6	-100.18	-81.1	-434.1	186.7	165.8	20.90	8.931		
4,200.0	4,170.6	4,195.6	4,164.4	10.8	10.9	-100.02	-83.4	-448.2	192.3	170.8	21.49	8.947		
4,300.0	4,269.6	4,295.4	4,263.3	11.1	11.2	-99.87	-85.7	-462.2	197.8	175.8	22.08	8.962		
4,400.0	4,368.7	4,395.2	4,362.1	11.4	11.5	-99.73	-88.0	-476.3	203.4	180.8	22.66	8.976		
4,500.0	4,467.8	4,495.1	4,460.9	11.7	11.8	-99.59	-90.2	-490.3	209.0	185.8	23.25	8.990		
4,600.0	4,566.9	4,594.9	4,559.7	12.0	12.1	-99.46	-92.5	-504.4	214.6	190.8	23.84	9.003		
4,700.0	4,665.9	4,694.8	4,658.6	12.3	12.4	-99.34	-94.8	-518.4	220.2	195.8	24.43	9.015		
4,800.0	4,765.0	4,794.6	4,757.4	12.6	12.7	-99.23	-97.0	-532.4	225.8	200.8	25.02	9.027		
4,900.0	4,864.1	4,894.4	4,856.2	12.9	13.0	-99.11	-99.3	-546.5	231.4	205.8	25.61	9.038		
5,000.0	4,963.2	4,994.3	4,955.0	13.2	13.3	-99.01	-101.6	-560.5	237.0	210.8	26.19	9.049		
5,100.0	5,062.2	5,094.1	5,053.9	13.5	13.6	-98.91	-103.9	-574.6	242.6	215.8	26.78	9.059		

CC - Min centre to center distance or convergent point, SF - min separation factor, ES - min ellipse separation

Cathedral Energy Services

Anticollision Report

Company:	EnCana Oil & Gas (USA) Inc	Local Co-ordinate Reference:	Well Bohrer 2D-19H-E368
Project:	DJ Wattenberg	TVD Reference:	WELL @ 5084.0ft (Original Well Elev)
Reference Site:	S19-T3N-R68W (Bohrer)	MD Reference:	WELL @ 5084.0ft (Original Well Elev)
Site Error:	0.0ft	North Reference:	True
Reference Well:	Bohrer 2D-19H-E368	Survey Calculation Method:	Minimum Curvature
Well Error:	0.0ft	Output errors are at	2.00 sigma
Reference Wellbore	Hz	Database:	USA EDM 5000 Multi Users DB
Reference Design:	Plan #1	Offset TVD Reference:	Offset Datum

Offset Design S19-T3N-R68W (Bohrer) - Bohrer 2E-19H-E368 - Hz - Plan #1													Offset Site Error:	0.0 ft
Survey Program: O-Geolink MWD													Offset Well Error:	0.0 ft
Reference		Offset		Semi Major Axis			Distance							Warning
Measured Depth (ft)	Vertical Depth (ft)	Measured Depth (ft)	Vertical Depth (ft)	Reference (ft)	Offset (ft)	Highside Toolface (°)	Offset Wellbore Centre +N/-S (ft)	+E/-W (ft)	Between Centres (ft)	Between Ellipses (ft)	Total Uncertainty Axis	Separation Factor		
5,200.0	5,161.3	5,194.0	5,152.7	13.8	13.9	-98.81	-106.1	-588.6	248.2	220.9	27.37	9.069		
5,300.0	5,260.4	5,293.8	5,251.5	14.1	14.2	-98.72	-108.4	-602.6	253.8	225.9	27.96	9.078		
5,400.0	5,359.5	5,393.7	5,350.3	14.4	14.5	-98.63	-110.7	-616.7	259.4	230.9	28.55	9.087		
5,500.0	5,458.5	5,493.5	5,449.2	14.7	14.9	-98.55	-112.9	-630.7	265.0	235.9	29.14	9.096		
5,600.0	5,557.6	5,593.3	5,548.0	15.0	15.2	-98.47	-115.2	-644.8	270.7	240.9	29.73	9.104		
5,700.0	5,656.7	5,693.2	5,646.8	15.3	15.5	-98.39	-117.5	-658.8	276.3	245.9	30.32	9.112		
5,800.0	5,755.8	5,793.0	5,745.6	15.6	15.8	-98.32	-119.8	-672.9	281.9	251.0	30.91	9.120		
5,900.0	5,854.8	5,892.9	5,844.4	15.8	16.1	-98.25	-122.0	-686.9	287.5	256.0	31.49	9.128		
6,000.0	5,953.9	5,992.7	5,943.3	16.1	16.4	-98.18	-124.3	-700.9	293.1	261.0	32.08	9.135		
6,100.0	6,053.0	6,092.6	6,042.1	16.4	16.7	-98.11	-126.6	-715.0	298.7	266.0	32.67	9.142		
6,200.0	6,152.0	6,192.4	6,140.9	16.7	17.0	-98.05	-128.8	-729.0	304.3	271.0	33.26	9.148		
6,300.0	6,251.1	6,294.1	6,241.7	17.0	17.3	-98.19	-131.2	-742.2	309.8	276.0	33.83	9.158		
6,400.0	6,350.2	6,397.1	6,344.5	17.3	17.3	-100.94	-133.5	-741.2	314.3	280.1	34.19	9.192		
6,500.0	6,449.3	6,492.2	6,437.9	17.6	17.1	-111.59	-135.7	-723.9	319.9	285.6	34.22	9.346		
6,600.0	6,549.1	6,589.0	6,521.3	17.7	16.8	103.94	-137.6	-694.0	328.9	295.2	33.68	9.764		
6,700.0	6,647.6	6,665.6	6,595.8	17.5	16.3	83.32	-139.3	-653.8	340.6	307.9	32.68	10.421		
6,800.0	6,741.6	6,750.0	6,663.3	17.2	15.8	75.33	-140.8	-603.3	353.8	322.5	31.33	11.294		
6,900.0	6,828.4	6,826.5	6,717.4	16.7	15.3	70.04	-142.1	-549.4	367.4	337.5	29.85	12.308		
7,000.0	6,905.3	6,900.0	6,762.3	16.0	14.8	66.06	-143.1	-491.2	380.2	351.9	28.35	13.412		
7,100.0	6,970.0	6,979.6	6,802.0	15.4	14.4	62.88	-144.0	-422.3	391.5	364.5	26.96	14.524		
7,200.0	7,020.6	7,050.0	6,828.9	14.9	14.1	60.71	-144.7	-357.3	400.6	374.7	25.97	15.428		
7,300.0	7,055.4	7,128.4	6,849.2	14.5	14.1	59.18	-145.1	-281.7	407.0	381.5	25.53	15.944		
7,400.0	7,073.4	7,200.0	6,858.6	14.6	14.2	58.43	-145.3	-210.7	410.5	384.7	25.77	15.931		
7,500.0	7,076.0	7,288.2	6,860.0	15.1	14.8	58.30	-145.4	-122.5	411.0	384.2	26.80	15.338		
7,600.0	7,076.0	7,388.2	6,860.0	16.1	15.8	58.30	-145.4	-22.5	411.0	382.6	28.48	14.434		
7,700.0	7,076.0	7,488.2	6,860.0	17.4	17.1	58.30	-145.4	77.5	411.0	380.4	30.64	13.414		
7,800.0	7,076.0	7,588.2	6,860.0	18.9	18.6	58.30	-145.4	177.5	411.0	377.8	33.20	12.379		
7,900.0	7,076.0	7,688.2	6,860.0	20.7	20.3	58.30	-145.4	277.5	411.0	375.0	36.08	11.393		
8,000.0	7,076.0	7,788.2	6,860.0	22.5	22.2	58.30	-145.4	377.5	411.0	371.8	39.20	10.487		
8,100.0	7,076.0	7,888.2	6,860.0	24.5	24.2	58.30	-145.4	477.5	411.0	368.5	42.50	9.671		
8,200.0	7,076.0	7,988.2	6,860.0	26.5	26.2	58.30	-145.4	577.5	411.0	365.1	45.96	8.944		
8,300.0	7,076.0	8,088.2	6,860.0	28.6	28.3	58.30	-145.4	677.5	411.0	361.5	49.53	8.298		
8,400.0	7,076.0	8,188.2	6,860.0	30.8	30.5	58.30	-145.4	777.5	411.0	357.8	53.20	7.726		
8,500.0	7,076.0	8,288.2	6,860.0	33.0	32.7	58.30	-145.4	877.5	411.0	354.1	56.94	7.218		
8,600.0	7,076.0	8,388.2	6,860.0	35.2	35.0	58.30	-145.4	977.5	411.0	350.3	60.75	6.766		
8,700.0	7,076.0	8,488.2	6,860.0	37.5	37.3	58.30	-145.4	1,077.5	411.0	346.4	64.61	6.362		
8,800.0	7,076.0	8,588.2	6,860.0	39.8	39.6	58.30	-145.4	1,177.5	411.0	342.5	68.51	6.000		
8,900.0	7,076.0	8,688.2	6,860.0	42.1	41.9	58.30	-145.4	1,277.5	411.0	338.6	72.44	5.674		
9,000.0	7,076.0	8,788.2	6,860.0	44.5	44.2	58.30	-145.4	1,377.5	411.0	334.6	76.41	5.380		
9,100.0	7,076.0	8,888.2	6,860.0	46.8	46.6	58.30	-145.4	1,477.5	411.0	330.6	80.40	5.113		
9,200.0	7,076.0	8,988.2	6,860.0	49.2	49.0	58.30	-145.4	1,577.5	411.0	326.6	84.41	4.870		
9,300.0	7,076.0	9,088.2	6,860.0	51.5	51.3	58.30	-145.4	1,677.5	411.0	322.6	88.44	4.648		
9,400.0	7,076.0	9,188.2	6,860.0	53.9	53.7	58.30	-145.4	1,777.5	411.0	318.6	92.49	4.444		
9,500.0	7,076.0	9,288.2	6,860.0	56.3	56.1	58.30	-145.4	1,877.5	411.0	314.5	96.55	4.257		
9,600.0	7,076.0	9,388.2	6,860.0	58.7	58.5	58.30	-145.4	1,977.5	411.0	310.4	100.62	4.085		
9,700.0	7,076.0	9,488.2	6,860.0	61.1	60.9	58.30	-145.4	2,077.5	411.0	306.3	104.71	3.926		
9,800.0	7,076.0	9,588.2	6,860.0	63.5	63.3	58.30	-145.4	2,177.5	411.0	302.2	108.80	3.778		
9,900.0	7,076.0	9,688.2	6,860.0	65.9	65.7	58.30	-145.4	2,277.5	411.0	298.1	112.91	3.641		
10,000.0	7,076.0	9,788.2	6,860.0	68.3	68.2	58.30	-145.4	2,377.5	411.0	294.0	117.02	3.513		
10,100.0	7,076.0	9,888.2	6,860.0	70.8	70.6	58.30	-145.4	2,477.5	411.0	289.9	121.14	3.393		
10,200.0	7,076.0	9,988.2	6,860.0	73.2	73.0	58.30	-145.4	2,577.5	411.0	285.8	125.26	3.281		
10,300.0	7,076.0	10,088.2	6,860.0	75.6	75.4	58.30	-145.4	2,677.5	411.0	281.6	129.40	3.177		

CC - Min centre to center distance or convergent point, SF - min separation factor, ES - min ellipse separation

Cathedral Energy Services

Anticollision Report

Company:	EnCana Oil & Gas (USA) Inc	Local Co-ordinate Reference:	Well Bohrer 2D-19H-E368
Project:	DJ Wattenberg	TVD Reference:	WELL @ 5084.0ft (Original Well Elev)
Reference Site:	S19-T3N-R68W (Bohrer)	MD Reference:	WELL @ 5084.0ft (Original Well Elev)
Site Error:	0.0ft	North Reference:	True
Reference Well:	Bohrer 2D-19H-E368	Survey Calculation Method:	Minimum Curvature
Well Error:	0.0ft	Output errors are at	2.00 sigma
Reference Wellbore	Hz	Database:	USA EDM 5000 Multi Users DB
Reference Design:	Plan #1	Offset TVD Reference:	Offset Datum

Offset Design												S19-T3N-R68W (Bohrer) - Bohrer 2E-19H-E368 - Hz - Plan #1		Offset Site Error:		0.0 ft	
Survey Program:												0-Geolink MWD		Offset Well Error:		0.0 ft	
Reference		Offset		Semi Major Axis			Distance						Warning				
Measured Depth	Vertical Depth	Measured Depth	Vertical Depth	Reference	Offset	Highside Toolface	Offset Wellbore Centre		Between Centres	Between Ellipses	Total Uncertainty Axis	Separation Factor					
(ft)	(ft)	(ft)	(ft)	(ft)	(ft)	(°)	+N/-S (ft)	+E/-W (ft)	(ft)	(ft)							
10,400.0	7,076.0	10,188.2	6,860.0	78.0	77.9	58.30	-145.4	2,777.5	411.0	277.5	133.53	3.078					
10,500.0	7,076.0	10,288.2	6,860.0	80.5	80.3	58.30	-145.4	2,877.5	411.0	273.4	137.67	2.986					
10,600.0	7,076.0	10,388.2	6,860.0	82.9	82.7	58.30	-145.4	2,977.5	411.0	269.2	141.82	2.898					
10,700.0	7,076.0	10,488.2	6,860.0	85.3	85.2	58.30	-145.4	3,077.5	411.0	265.1	145.97	2.816					
10,800.0	7,076.0	10,588.2	6,860.0	87.8	87.6	58.30	-145.4	3,177.5	411.0	260.9	150.12	2.738					
10,900.0	7,076.0	10,688.2	6,860.0	90.2	90.1	58.30	-145.4	3,277.5	411.0	256.8	154.28	2.664					
11,000.0	7,076.0	10,788.2	6,860.0	92.7	92.5	58.30	-145.4	3,377.5	411.0	252.6	158.44	2.594					
11,100.0	7,076.0	10,888.2	6,860.0	95.1	95.0	58.30	-145.4	3,477.5	411.0	248.4	162.60	2.528					
11,200.0	7,076.0	10,988.2	6,860.0	97.6	97.4	58.30	-145.4	3,577.5	411.0	244.3	166.77	2.465					
11,300.0	7,076.0	11,088.2	6,860.0	100.0	99.9	58.30	-145.4	3,677.5	411.0	240.1	170.94	2.405					
11,400.0	7,076.0	11,188.2	6,860.0	102.4	102.3	58.30	-145.4	3,777.5	411.0	235.9	175.11	2.347					
11,500.0	7,076.0	11,288.2	6,860.0	104.9	104.8	58.30	-145.4	3,877.5	411.0	231.8	179.28	2.293					
11,600.0	7,076.0	11,388.2	6,860.0	107.3	107.2	58.30	-145.4	3,977.5	411.0	227.6	183.45	2.241					
11,650.1	7,076.0	11,438.4	6,860.0	108.6	108.4	58.30	-145.4	4,027.6	411.0	225.5	185.55	2.215					
11,669.1	7,076.0	11,454.6	6,860.0	109.0	108.8	58.30	-145.4	4,043.9	411.1	224.8	186.28	2.207 SF					

Cathedral Energy Services

Anticollision Report

Company:	EnCana Oil & Gas (USA) Inc	Local Co-ordinate Reference:	Well Bohrer 2D-19H-E368
Project:	DJ Wattenberg	TVD Reference:	WELL @ 5084.0ft (Original Well Elev)
Reference Site:	S19-T3N-R68W (Bohrer)	MD Reference:	WELL @ 5084.0ft (Original Well Elev)
Site Error:	0.0ft	North Reference:	True
Reference Well:	Bohrer 2D-19H-E368	Survey Calculation Method:	Minimum Curvature
Well Error:	0.0ft	Output errors are at	2.00 sigma
Reference Wellbore	Hz	Database:	USA EDM 5000 Multi Users DB
Reference Design:	Plan #1	Offset TVD Reference:	Offset Datum

Offset Design S19-T3N-R68W (Bohrer) - Bohrer 2F-19H-E368 - Hz - Plan #1													Offset Site Error:	0.0 ft
Survey Program: O-Geolink MWD													Offset Well Error:	0.0 ft
Reference		Offset		Semi Major Axis		Distance		Total		Separation		Warning		
Measured Depth (ft)	Vertical Depth (ft)	Measured Depth (ft)	Vertical Depth (ft)	Reference (ft)	Offset (ft)	Highside Toolface (°)	Offset Wellbore Centre +N/-S (ft)	+E/-W (ft)	Between Centres (ft)	Between Ellipses (ft)	Uncertainty Axis	Factor		
0.0	0.0	0.0	0.0	0.0	0.0	180.00	-21.9	0.0	21.9					
100.0	100.0	100.0	100.0	0.1	0.1	180.00	-21.9	0.0	21.9	21.6	0.26	83.488		
200.0	200.0	200.0	200.0	0.3	0.3	180.00	-21.9	0.0	21.9	21.2	0.61	35.781		
300.0	300.0	300.0	300.0	0.5	0.5	180.00	-21.9	0.0	21.9	20.9	0.96	22.769		
400.0	400.0	400.0	400.0	0.7	0.7	180.00	-21.9	0.0	21.9	20.5	1.31	16.698		
500.0	500.0	500.0	500.0	0.8	0.8	180.00	-21.9	0.0	21.9	20.2	1.66	13.182 CC, ES		
600.0	600.0	599.8	599.8	1.0	1.0	-104.18	-22.3	-0.8	22.5	20.5	2.01	11.207		
700.0	700.0	699.6	699.5	1.2	1.2	-104.78	-23.6	-3.0	24.4	22.1	2.36	10.344		
800.0	799.9	799.3	799.2	1.4	1.4	-105.58	-25.7	-6.8	27.6	24.9	2.72	10.146 SF		
900.0	899.7	899.0	898.7	1.6	1.6	-106.44	-28.7	-12.1	32.2	29.1	3.10	10.361		
1,000.0	999.4	998.5	997.9	1.8	1.8	-107.23	-32.6	-18.8	38.0	34.5	3.50	10.835		
1,100.0	1,098.9	1,098.0	1,096.9	2.0	2.0	-107.92	-37.3	-27.1	45.0	41.1	3.93	11.464		
1,200.0	1,198.3	1,197.3	1,195.5	2.2	2.2	-108.48	-42.9	-36.8	53.4	49.0	4.39	12.177		
1,300.0	1,297.4	1,296.4	1,293.8	2.5	2.5	-108.91	-49.2	-48.0	63.1	58.2	4.88	12.927		
1,400.0	1,396.5	1,395.4	1,391.7	2.7	2.7	-108.49	-56.5	-60.6	73.6	68.2	5.40	13.643		
1,500.0	1,495.6	1,494.8	1,490.0	3.0	3.0	-107.74	-64.0	-73.9	84.5	78.5	5.93	14.253		
1,600.0	1,594.6	1,594.2	1,588.2	3.3	3.3	-107.16	-71.6	-87.2	95.3	88.8	6.46	14.745		
1,700.0	1,693.7	1,693.6	1,686.4	3.6	3.6	-106.70	-79.2	-100.5	106.2	99.2	7.01	15.148		
1,800.0	1,792.8	1,793.0	1,784.6	3.9	3.9	-106.33	-86.8	-113.8	117.0	109.5	7.56	15.483		
1,900.0	1,891.9	1,892.4	1,882.8	4.1	4.2	-106.02	-94.4	-127.0	127.9	119.8	8.11	15.765		
2,000.0	1,990.9	1,991.8	1,981.1	4.4	4.5	-105.75	-101.9	-140.3	138.8	130.1	8.67	16.006		
2,100.0	2,090.0	2,091.2	2,079.3	4.7	4.8	-105.53	-109.5	-153.6	149.6	140.4	9.23	16.212		
2,200.0	2,189.1	2,190.6	2,177.5	5.0	5.2	-105.34	-117.1	-166.9	160.5	150.7	9.79	16.392		
2,300.0	2,288.2	2,290.0	2,275.7	5.3	5.5	-105.17	-124.7	-180.2	171.4	161.0	10.36	16.549		
2,400.0	2,387.2	2,389.4	2,374.0	5.6	5.8	-105.02	-132.3	-193.4	182.3	171.3	10.92	16.687		
2,500.0	2,486.3	2,488.8	2,472.2	5.9	6.1	-104.89	-139.8	-206.7	193.1	181.6	11.49	16.810		
2,600.0	2,585.4	2,588.2	2,570.4	6.2	6.4	-104.77	-147.4	-220.0	204.0	192.0	12.06	16.920		
2,700.0	2,684.4	2,687.6	2,668.6	6.4	6.7	-104.66	-155.0	-233.3	214.9	202.3	12.63	17.019		
2,800.0	2,783.5	2,787.0	2,766.8	6.7	7.0	-104.57	-162.6	-246.6	225.8	212.6	13.20	17.108		
2,900.0	2,882.6	2,886.5	2,865.1	7.0	7.4	-104.48	-170.1	-259.8	236.7	222.9	13.77	17.189		
3,000.0	2,981.7	2,985.9	2,963.3	7.3	7.7	-104.40	-177.7	-273.1	247.5	233.2	14.34	17.262		
3,100.0	3,080.7	3,085.3	3,061.5	7.6	8.0	-104.33	-185.3	-286.4	258.4	243.5	14.91	17.329		
3,200.0	3,179.8	3,184.7	3,159.7	7.9	8.3	-104.26	-192.9	-299.7	269.3	253.8	15.49	17.391		
3,300.0	3,278.9	3,284.1	3,258.0	8.2	8.6	-104.20	-200.5	-313.0	280.2	264.1	16.06	17.448		
3,400.0	3,378.0	3,383.5	3,356.2	8.5	8.9	-104.14	-208.0	-326.2	291.1	274.4	16.63	17.500		
3,500.0	3,477.0	3,482.9	3,454.4	8.8	9.3	-104.09	-215.6	-339.5	302.0	284.7	17.21	17.549		
3,600.0	3,576.1	3,582.3	3,552.6	9.1	9.6	-104.04	-223.2	-352.8	312.8	295.1	17.78	17.594		
3,700.0	3,675.2	3,681.7	3,650.8	9.4	9.9	-103.99	-230.8	-366.1	323.7	305.4	18.36	17.636		
3,800.0	3,774.3	3,781.1	3,749.1	9.7	10.2	-103.95	-238.4	-379.4	334.6	315.7	18.93	17.675		
3,900.0	3,873.3	3,880.5	3,847.3	10.0	10.5	-103.91	-245.9	-392.7	345.5	326.0	19.51	17.712		
4,000.0	3,972.4	3,979.9	3,945.5	10.3	10.8	-103.87	-253.5	-405.9	356.4	336.3	20.08	17.746		
4,100.0	4,071.5	4,079.3	4,043.7	10.5	11.2	-103.84	-261.1	-419.2	367.3	346.6	20.66	17.779		
4,200.0	4,170.6	4,178.7	4,142.0	10.8	11.5	-103.80	-268.7	-432.5	378.1	356.9	21.23	17.809		
4,300.0	4,269.6	4,278.1	4,240.2	11.1	11.8	-103.77	-276.3	-445.8	389.0	367.2	21.81	17.838		
4,400.0	4,368.7	4,377.5	4,338.4	11.4	12.1	-103.74	-283.8	-459.1	399.9	377.5	22.39	17.865		
4,500.0	4,467.8	4,476.9	4,436.6	11.7	12.4	-103.72	-291.4	-472.3	410.8	387.8	22.96	17.890		
4,600.0	4,566.9	4,576.4	4,534.9	12.0	12.7	-103.69	-299.0	-485.6	421.7	398.1	23.54	17.915		
4,700.0	4,665.9	4,675.8	4,633.1	12.3	13.1	-103.66	-306.6	-498.9	432.6	408.4	24.11	17.937		
4,800.0	4,765.0	4,775.2	4,731.3	12.6	13.4	-103.64	-314.2	-512.2	443.4	418.8	24.69	17.959		
4,900.0	4,864.1	4,874.6	4,829.5	12.9	13.7	-103.62	-321.7	-525.5	454.3	429.1	25.27	17.980		
5,000.0	4,963.2	4,974.0	4,927.7	13.2	14.0	-103.59	-329.3	-538.7	465.2	439.4	25.85	18.000		
5,100.0	5,062.2	5,073.4	5,026.0	13.5	14.3	-103.57	-336.9	-552.0	476.1	449.7	26.42	18.018		

CC - Min centre to center distance or convergent point, SF - min separation factor, ES - min ellipse separation

Cathedral Energy Services

Anticollision Report

Company:	EnCana Oil & Gas (USA) Inc	Local Co-ordinate Reference:	Well Bohrer 2D-19H-E368
Project:	DJ Wattenberg	TVD Reference:	WELL @ 5084.0ft (Original Well Elev)
Reference Site:	S19-T3N-R68W (Bohrer)	MD Reference:	WELL @ 5084.0ft (Original Well Elev)
Site Error:	0.0ft	North Reference:	True
Reference Well:	Bohrer 2D-19H-E368	Survey Calculation Method:	Minimum Curvature
Well Error:	0.0ft	Output errors are at	2.00 sigma
Reference Wellbore	Hz	Database:	USA EDM 5000 Multi Users DB
Reference Design:	Plan #1	Offset TVD Reference:	Offset Datum

Offset Design												S19-T3N-R68W (Bohrer) - Bohrer 2F-19H-E368 - Hz - Plan #1		Offset Site Error:		0.0 ft	
Survey Program:												0-Geolink MWD		Offset Well Error:		0.0 ft	
Reference		Offset		Semi Major Axis			Distance						Warning				
Measured Depth	Vertical Depth	Measured Depth	Vertical Depth	Reference	Offset	Highside Toolface	Offset Wellbore Centre		Between Centres	Between Ellipses	Total Uncertainty Axis	Separation Factor					
(ft)	(ft)	(ft)	(ft)	(ft)	(ft)	(°)	+N/-S (ft)	+E/-W (ft)	(ft)	(ft)							
5,200.0	5,161.3	5,172.8	5,124.2	13.8	14.7	-103.55	-344.5	-565.3	487.0	460.0	27.00	18.036					
5,300.0	5,260.4	5,272.2	5,222.4	14.1	15.0	-103.53	-352.1	-578.6	497.9	470.3	27.58	18.053					

Cathedral Energy Services

Anticollision Report

Company:	EnCana Oil & Gas (USA) Inc	Local Co-ordinate Reference:	Well Bohrer 2D-19H-E368
Project:	DJ Wattenberg	TVD Reference:	WELL @ 5084.0ft (Original Well Elev)
Reference Site:	S19-T3N-R68W (Bohrer)	MD Reference:	WELL @ 5084.0ft (Original Well Elev)
Site Error:	0.0ft	North Reference:	True
Reference Well:	Bohrer 2D-19H-E368	Survey Calculation Method:	Minimum Curvature
Well Error:	0.0ft	Output errors are at	2.00 sigma
Reference Wellbore	Hz	Database:	USA EDM 5000 Multi Users DB
Reference Design:	Plan #1	Offset TVD Reference:	Offset Datum

Offset Design S19-T3N-R68W (Bohrer) - Bohrer 2G-19H-E368 - Hz - Plan #1													Offset Site Error:	0.0 ft
Survey Program: O-Geolink MWD													Offset Well Error:	0.0 ft
Reference		Offset		Semi Major Axis		Highside Toolface (°)	Distance		Total Uncertainty Axis	Separation Factor	Warning			
Measured Depth (ft)	Vertical Depth (ft)	Measured Depth (ft)	Vertical Depth (ft)	Reference (ft)	Offset (ft)		Offset Wellbore Centre +N/-S (ft)	+E/-W (ft)						
0.0	0.0	0.0	0.0	0.0	0.0	-180.00	-29.1	0.0	29.1					
100.0	100.0	100.0	100.0	0.1	0.1	-180.00	-29.1	0.0	29.1	28.9	0.26	111.317		
200.0	200.0	200.0	200.0	0.3	0.3	-180.00	-29.1	0.0	29.1	28.5	0.61	47.707		
300.0	300.0	300.0	300.0	0.5	0.5	-180.00	-29.1	0.0	29.1	28.2	0.96	30.359		
400.0	400.0	400.0	400.0	0.7	0.7	-180.00	-29.1	0.0	29.1	27.8	1.31	22.263 CC, ES		
500.0	500.0	499.6	499.6	0.8	0.8	-178.81	-29.8	-0.6	29.8	28.1	1.66	17.954		
600.0	600.0	599.2	599.2	1.0	1.0	-101.01	-31.6	-2.5	31.8	29.8	2.01	15.854		
700.0	700.0	698.7	698.6	1.2	1.2	-100.39	-34.6	-5.5	35.5	33.2	2.36	15.038		
800.0	799.9	798.1	797.8	1.4	1.4	-100.67	-38.9	-9.8	40.9	38.1	2.73	14.973 SF		
900.0	899.7	897.3	896.7	1.6	1.6	-101.50	-44.3	-15.4	47.8	44.7	3.11	15.369		
1,000.0	999.4	996.3	995.2	1.8	1.8	-102.62	-50.9	-22.1	56.3	52.8	3.51	16.050		
1,100.0	1,098.9	1,095.0	1,093.3	2.0	2.0	-103.81	-58.7	-30.0	66.5	62.6	3.94	16.900		
1,200.0	1,198.3	1,193.4	1,190.9	2.2	2.3	-104.97	-67.7	-39.0	78.3	74.0	4.39	17.837		
1,300.0	1,297.4	1,291.5	1,287.9	2.5	2.6	-106.04	-77.8	-49.3	91.8	86.9	4.88	18.814		
1,400.0	1,396.5	1,389.3	1,384.4	2.7	2.9	-106.53	-89.0	-60.6	106.6	101.2	5.39	19.778		
1,500.0	1,495.6	1,486.7	1,480.2	3.0	3.2	-106.30	-101.3	-73.1	122.5	116.6	5.91	20.707		
1,600.0	1,594.6	1,584.9	1,576.6	3.3	3.6	-105.74	-114.6	-86.6	139.2	132.7	6.45	21.579		
1,700.0	1,693.7	1,683.5	1,673.3	3.6	3.9	-105.28	-127.9	-100.1	156.0	149.0	6.99	22.301		
1,800.0	1,792.8	1,782.1	1,770.0	3.9	4.3	-104.91	-141.3	-113.7	172.7	165.2	7.54	22.905		
1,900.0	1,891.9	1,880.6	1,866.7	4.1	4.6	-104.60	-154.7	-127.2	189.5	181.4	8.09	23.416		
2,000.0	1,990.9	1,979.2	1,963.5	4.4	5.0	-104.35	-168.0	-140.8	206.3	197.7	8.65	23.854		
2,100.0	2,090.0	2,077.8	2,060.2	4.7	5.4	-104.13	-181.4	-154.3	223.1	213.9	9.21	24.232		
2,200.0	2,189.1	2,176.4	2,156.9	5.0	5.7	-103.94	-194.8	-167.9	239.9	230.1	9.77	24.561		
2,300.0	2,288.2	2,274.9	2,253.6	5.3	6.1	-103.78	-208.2	-181.4	256.7	246.4	10.33	24.851		
2,400.0	2,387.2	2,373.5	2,350.3	5.6	6.5	-103.64	-221.5	-195.0	273.5	262.6	10.89	25.107		
2,500.0	2,486.3	2,472.1	2,447.1	5.9	6.8	-103.51	-234.9	-208.5	290.3	278.8	11.46	25.335		
2,600.0	2,585.4	2,570.7	2,543.8	6.2	7.2	-103.40	-248.3	-222.1	307.1	295.1	12.02	25.540		
2,700.0	2,684.4	2,669.2	2,640.5	6.4	7.6	-103.30	-261.6	-235.6	323.9	311.3	12.59	25.724		
2,800.0	2,783.5	2,767.8	2,737.2	6.7	7.9	-103.21	-275.0	-249.2	340.7	327.5	13.16	25.891		
2,900.0	2,882.6	2,866.4	2,833.9	7.0	8.3	-103.13	-288.4	-262.7	357.5	343.8	13.73	26.042		
3,000.0	2,981.7	2,965.0	2,930.7	7.3	8.7	-103.06	-301.7	-276.3	374.3	360.0	14.30	26.181		
3,100.0	3,080.7	3,063.6	3,027.4	7.6	9.0	-102.99	-315.1	-289.8	391.1	376.2	14.87	26.308		
3,200.0	3,179.8	3,162.1	3,124.1	7.9	9.4	-102.92	-328.5	-303.4	407.9	392.5	15.44	26.424		
3,300.0	3,278.9	3,260.7	3,220.8	8.2	9.8	-102.87	-341.8	-316.9	424.7	408.7	16.01	26.532		
3,400.0	3,378.0	3,359.3	3,317.6	8.5	10.2	-102.81	-355.2	-330.5	441.5	424.9	16.58	26.631		
3,500.0	3,477.0	3,457.9	3,414.3	8.8	10.5	-102.76	-368.6	-344.0	458.3	441.2	17.15	26.723		
3,600.0	3,576.1	3,556.4	3,511.0	9.1	10.9	-102.72	-381.9	-357.6	475.1	457.4	17.72	26.809		
3,700.0	3,675.2	3,655.0	3,607.7	9.4	11.3	-102.68	-395.3	-371.1	491.9	473.6	18.30	26.889		

Cathedral Energy Services

Anticollision Report

Company:	EnCana Oil & Gas (USA) Inc	Local Co-ordinate Reference:	Well Bohrer 2D-19H-E368
Project:	DJ Wattenberg	TVD Reference:	WELL @ 5084.0ft (Original Well Elev)
Reference Site:	S19-T3N-R68W (Bohrer)	MD Reference:	WELL @ 5084.0ft (Original Well Elev)
Site Error:	0.0ft	North Reference:	True
Reference Well:	Bohrer 2D-19H-E368	Survey Calculation Method:	Minimum Curvature
Well Error:	0.0ft	Output errors are at	2.00 sigma
Reference Wellbore	Hz	Database:	USA EDM 5000 Multi Users DB
Reference Design:	Plan #1	Offset TVD Reference:	Offset Datum

Offset Design S19-T3N-R68W (Bohrer) - Bohrer 2H-19H-E368 - Hz - Plan #1													Offset Site Error: 0.0 ft	
Survey Program: 0-Geolink MWD													Offset Well Error: 0.0 ft	
Reference		Offset		Semi Major Axis			Distance							Warning
Measured Depth	Vertical Depth	Measured Depth	Vertical Depth	Reference	Offset	Highside Toolface	Offset Wellbore Centre	Between Centres	Between Ellipses	Total Uncertainty	Separation			
(ft)	(ft)	(ft)	(ft)	(ft)	(ft)	(°)	+N/-S (ft)	+E/-W (ft)	(ft)	(ft)	Axis	Factor		
0.0	0.0	0.0	0.0	0.0	0.0	180.00	-40.1	0.0	40.1					
100.0	100.0	99.0	99.0	0.1	0.1	180.00	-40.1	0.0	40.1	39.8	0.26	153.830		
200.0	200.0	199.0	199.0	0.3	0.3	180.00	-40.1	0.0	40.1	39.5	0.61	65.786		
300.0	300.0	299.0	299.0	0.5	0.5	180.00	-40.1	0.0	40.1	39.1	0.96	41.820	CC, ES	
400.0	400.0	398.4	398.4	0.7	0.7	-179.31	-40.8	-0.5	40.8	39.5	1.31	31.200		
500.0	500.0	497.8	497.8	0.8	0.8	-177.34	-42.8	-2.0	42.9	41.3	1.66	25.902		
600.0	600.0	597.1	596.9	1.0	1.0	-99.42	-46.3	-4.5	46.7	44.7	2.01	23.281		
700.0	700.0	696.2	695.8	1.2	1.2	-98.77	-51.2	-8.0	52.3	50.0	2.36	22.144		
800.0	799.9	795.1	794.4	1.4	1.4	-99.03	-57.4	-12.5	59.7	56.9	2.73	21.876	SF	
900.0	899.7	893.7	892.6	1.6	1.6	-99.90	-65.0	-17.9	68.8	65.7	3.11	22.137		
1,000.0	999.4	992.0	990.3	1.8	1.9	-101.09	-74.0	-24.4	79.7	76.2	3.51	22.724		
1,100.0	1,098.9	1,090.0	1,087.5	2.0	2.1	-102.41	-84.2	-31.8	92.4	88.4	3.93	23.508		
1,200.0	1,198.3	1,187.5	1,183.9	2.2	2.4	-103.74	-95.8	-40.1	106.9	102.5	4.38	24.398		
1,300.0	1,297.4	1,284.5	1,279.7	2.5	2.7	-105.03	-108.6	-49.3	123.2	118.4	4.86	25.344		
1,400.0	1,396.5	1,381.2	1,374.8	2.7	3.1	-105.92	-122.6	-59.4	141.1	135.7	5.36	26.309		
1,500.0	1,495.6	1,477.3	1,469.1	3.0	3.4	-106.23	-137.9	-70.4	160.3	154.4	5.88	27.271		
1,600.0	1,594.6	1,573.0	1,562.6	3.3	3.8	-106.15	-154.4	-82.3	180.7	174.3	6.40	28.228		
1,700.0	1,693.7	1,670.0	1,657.1	3.6	4.2	-105.87	-172.1	-95.0	202.1	195.2	6.94	29.139		
1,800.0	1,792.8	1,767.7	1,752.3	3.9	4.6	-105.63	-189.9	-107.8	223.5	216.1	7.48	29.900		
1,900.0	1,891.9	1,865.4	1,847.4	4.1	5.0	-105.43	-207.7	-120.6	245.0	237.0	8.02	30.544		
2,000.0	1,990.9	1,963.0	1,942.6	4.4	5.4	-105.26	-225.5	-133.4	266.4	257.9	8.57	31.095		
2,100.0	2,090.0	2,060.7	2,037.8	4.7	5.8	-105.12	-243.4	-146.3	287.9	278.8	9.12	31.570		
2,200.0	2,189.1	2,158.4	2,132.9	5.0	6.2	-105.00	-261.2	-159.1	309.3	299.7	9.67	31.985		
2,300.0	2,288.2	2,256.0	2,228.1	5.3	6.6	-104.89	-279.0	-171.9	330.8	320.6	10.23	32.348		
2,400.0	2,387.2	2,353.7	2,323.3	5.6	7.0	-104.80	-296.9	-184.8	352.3	341.5	10.78	32.670		
2,500.0	2,486.3	2,451.4	2,418.4	5.9	7.5	-104.72	-314.7	-197.6	373.7	362.4	11.34	32.957		
2,600.0	2,585.4	2,549.0	2,513.6	6.2	7.9	-104.64	-332.5	-210.4	395.2	383.3	11.90	33.213		
2,700.0	2,684.4	2,646.7	2,608.8	6.4	8.3	-104.58	-350.3	-223.2	416.6	404.2	12.46	33.444		
2,800.0	2,783.5	2,744.4	2,703.9	6.7	8.7	-104.52	-368.2	-236.1	438.1	425.1	13.02	33.653		
2,900.0	2,882.6	2,842.0	2,799.1	7.0	9.1	-104.46	-386.0	-248.9	459.5	446.0	13.58	33.843		
3,000.0	2,981.7	2,939.7	2,894.3	7.3	9.5	-104.41	-403.8	-261.7	481.0	466.9	14.14	34.016		

Cathedral Energy Services

Anticollision Report

Company:	EnCana Oil & Gas (USA) Inc	Local Co-ordinate Reference:	Well Bohrer 2D-19H-E368
Project:	DJ Wattenberg	TVD Reference:	WELL @ 5084.0ft (Original Well Elev)
Reference Site:	S19-T3N-R68W (Bohrer)	MD Reference:	WELL @ 5084.0ft (Original Well Elev)
Site Error:	0.0ft	North Reference:	True
Reference Well:	Bohrer 2D-19H-E368	Survey Calculation Method:	Minimum Curvature
Well Error:	0.0ft	Output errors are at	2.00 sigma
Reference Wellbore	Hz	Database:	USA EDM 5000 Multi Users DB
Reference Design:	Plan #1	Offset TVD Reference:	Offset Datum

Offset Design S19-T3N-R68W (Bohrer) - Bohrer 2I-19H-E368 - Hz - Plan #1												Offset Site Error: 0.0 ft		
Survey Program: 0-Geolink MWD												Offset Well Error: 0.0 ft		
Reference		Offset		Semi Major Axis			Distance							Warning
Measured Depth	Vertical Depth	Measured Depth	Vertical Depth	Reference	Offset	Highside Toolface	Offset Wellbore Centre	Between Centres	Between Ellipses	Total Uncertainty	Separation			
(ft)	(ft)	(ft)	(ft)	(ft)	(ft)	(°)	+N/-S (ft)	+E/-W (ft)	(ft)	(ft)	Axis	Factor		
0.0	0.0	0.0	0.0	0.0	0.0	-180.00	-51.0	0.0	51.0					
100.0	100.0	99.0	99.0	0.1	0.1	-180.00	-51.0	0.0	51.0	50.7	0.26	195.784		
200.0	200.0	199.0	199.0	0.3	0.3	-180.00	-51.0	0.0	51.0	50.4	0.61	83.727	CC, ES	
300.0	300.0	298.2	298.2	0.5	0.5	-179.55	-51.7	-0.4	51.7	50.8	0.96	54.050		
400.0	400.0	397.4	397.3	0.7	0.7	-178.26	-54.0	-1.6	54.0	52.7	1.31	41.306		
500.0	500.0	496.4	496.3	0.8	0.8	-176.33	-57.7	-3.7	57.9	56.2	1.66	34.802		
600.0	600.0	595.3	595.0	1.0	1.0	-98.70	-62.9	-6.6	63.5	61.5	2.01	31.663		
700.0	700.0	694.0	693.3	1.2	1.3	-98.21	-69.6	-10.3	71.0	68.7	2.36	30.071		
800.0	799.9	792.3	791.3	1.4	1.5	-98.53	-77.8	-14.8	80.4	77.6	2.73	29.474	SF	
900.0	899.7	890.3	888.7	1.6	1.7	-99.39	-87.4	-20.1	91.5	88.4	3.10	29.481		
1,000.0	999.4	988.0	985.5	1.8	2.0	-100.55	-98.4	-26.1	104.5	101.0	3.50	29.863		
1,100.0	1,098.9	1,085.1	1,081.6	2.0	2.3	-101.87	-110.7	-33.0	119.5	115.5	3.92	30.473		
1,200.0	1,198.3	1,181.7	1,176.9	2.2	2.6	-103.22	-124.5	-40.5	136.3	131.9	4.37	31.211		
1,300.0	1,297.4	1,277.7	1,271.4	2.5	2.9	-104.55	-139.5	-48.8	155.0	150.2	4.84	32.025		
1,400.0	1,396.5	1,373.2	1,365.1	2.7	3.3	-105.61	-155.8	-57.8	175.4	170.1	5.33	32.891		
1,500.0	1,495.6	1,468.2	1,457.9	3.0	3.7	-106.20	-173.4	-67.5	197.2	191.4	5.84	33.787		
1,600.0	1,594.6	1,562.5	1,549.7	3.3	4.1	-106.45	-192.2	-77.9	220.4	214.1	6.35	34.705		
1,700.0	1,693.7	1,656.3	1,640.6	3.6	4.5	-106.45	-212.2	-88.9	245.0	238.1	6.87	35.642		
1,800.0	1,792.8	1,749.3	1,730.5	3.9	4.9	-106.27	-233.3	-100.6	270.8	263.4	7.40	36.596		
1,900.0	1,891.9	1,841.7	1,819.3	4.1	5.4	-105.97	-255.5	-112.8	298.0	290.1	7.93	37.579		
2,000.0	1,990.9	1,937.5	1,911.2	4.4	5.9	-105.63	-279.3	-125.9	325.9	317.5	8.47	38.465		
2,100.0	2,090.0	2,033.5	2,003.3	4.7	6.4	-105.33	-303.1	-139.1	353.9	344.8	9.02	39.234		
2,200.0	2,189.1	2,129.5	2,095.4	5.0	6.8	-105.09	-326.9	-152.2	381.8	372.2	9.57	39.907		
2,300.0	2,288.2	2,225.5	2,187.5	5.3	7.3	-104.87	-350.7	-165.3	409.7	399.6	10.12	40.502		
2,400.0	2,387.2	2,321.6	2,279.5	5.6	7.8	-104.69	-374.5	-178.5	437.7	427.0	10.67	41.030		
2,500.0	2,486.3	2,417.6	2,371.6	5.9	8.3	-104.52	-398.3	-191.6	465.6	454.4	11.22	41.502		
2,600.0	2,585.4	2,513.6	2,463.7	6.2	8.8	-104.38	-422.1	-204.7	493.5	481.8	11.77	41.927		

Cathedral Energy Services

Anticollision Report

Company:	EnCana Oil & Gas (USA) Inc	Local Co-ordinate Reference:	Well Bohrer 2D-19H-E368
Project:	DJ Wattenberg	TVD Reference:	WELL @ 5084.0ft (Original Well Elev)
Reference Site:	S19-T3N-R68W (Bohrer)	MD Reference:	WELL @ 5084.0ft (Original Well Elev)
Site Error:	0.0ft	North Reference:	True
Reference Well:	Bohrer 2D-19H-E368	Survey Calculation Method:	Minimum Curvature
Well Error:	0.0ft	Output errors are at	2.00 sigma
Reference Wellbore	Hz	Database:	USA EDM 5000 Multi Users DB
Reference Design:	Plan #1	Offset TVD Reference:	Offset Datum

Offset Design												Offset Site Error:	0.0 ft
S19-T3N-R68W (Bohrer) - BOHRER TRUST 21-19 (EXISTING) - ENCANA WELL - SURVEYS												Offset Well Error:	0.0 ft
Survey Program: 75-Geolink MWD													
Reference		Offset		Semi Major Axis			Distance						
Measured Depth	Vertical Depth	Measured Depth	Vertical Depth	Reference	Offset	Highside Toolface	Offset Wellbore Centre +N/-S	+E/-W	Between Centres	Between Ellipses	Total Uncertainty Axis	Separation Factor	Warning
(ft)	(ft)	(ft)	(ft)	(ft)	(ft)	(°)	(ft)	(ft)	(ft)	(ft)			
8,600.0	7,076.0	7,328.6	7,092.3	35.2	28.6	-90.41	673.4	1,137.7	495.6	433.5	62.11	7.980	
8,700.0	7,076.0	7,326.1	7,089.8	37.5	28.6	-90.10	673.4	1,137.7	472.9	408.5	64.38	7.345	
8,760.3	7,076.0	7,324.5	7,088.3	38.9	28.6	-89.91	673.4	1,137.8	469.0	403.2	65.77	7.132 CC, ES	
8,800.0	7,076.0	7,323.5	7,087.2	39.8	28.6	-89.79	673.4	1,137.8	470.7	404.0	66.68	7.059 SF	
8,900.0	7,076.0	7,321.0	7,084.7	42.1	28.6	-89.47	673.3	1,137.8	489.4	420.4	68.99	7.093	

Cathedral Energy Services

Anticollision Report

Company:	EnCana Oil & Gas (USA) Inc	Local Co-ordinate Reference:	Well Bohrer 2D-19H-E368
Project:	DJ Wattenberg	TVD Reference:	WELL @ 5084.0ft (Original Well Elev)
Reference Site:	S19-T3N-R68W (Bohrer)	MD Reference:	WELL @ 5084.0ft (Original Well Elev)
Site Error:	0.0ft	North Reference:	True
Reference Well:	Bohrer 2D-19H-E368	Survey Calculation Method:	Minimum Curvature
Well Error:	0.0ft	Output errors are at	2.00 sigma
Reference Wellbore	Hz	Database:	USA EDM 5000 Multi Users DB
Reference Design:	Plan #1	Offset TVD Reference:	Offset Datum

Reference Depths are relative to WELL @ 5084.0ft (Original Well Elev)
 Offset Depths are relative to Offset Datum
 Central Meridian is -105.500000 °

Coordinates are relative to: Bohrer 2D-19H-E368
 Coordinate System is US State Plane 1983, Colorado Northern Zone
 Grid Convergence at Surface is: 0.29°

