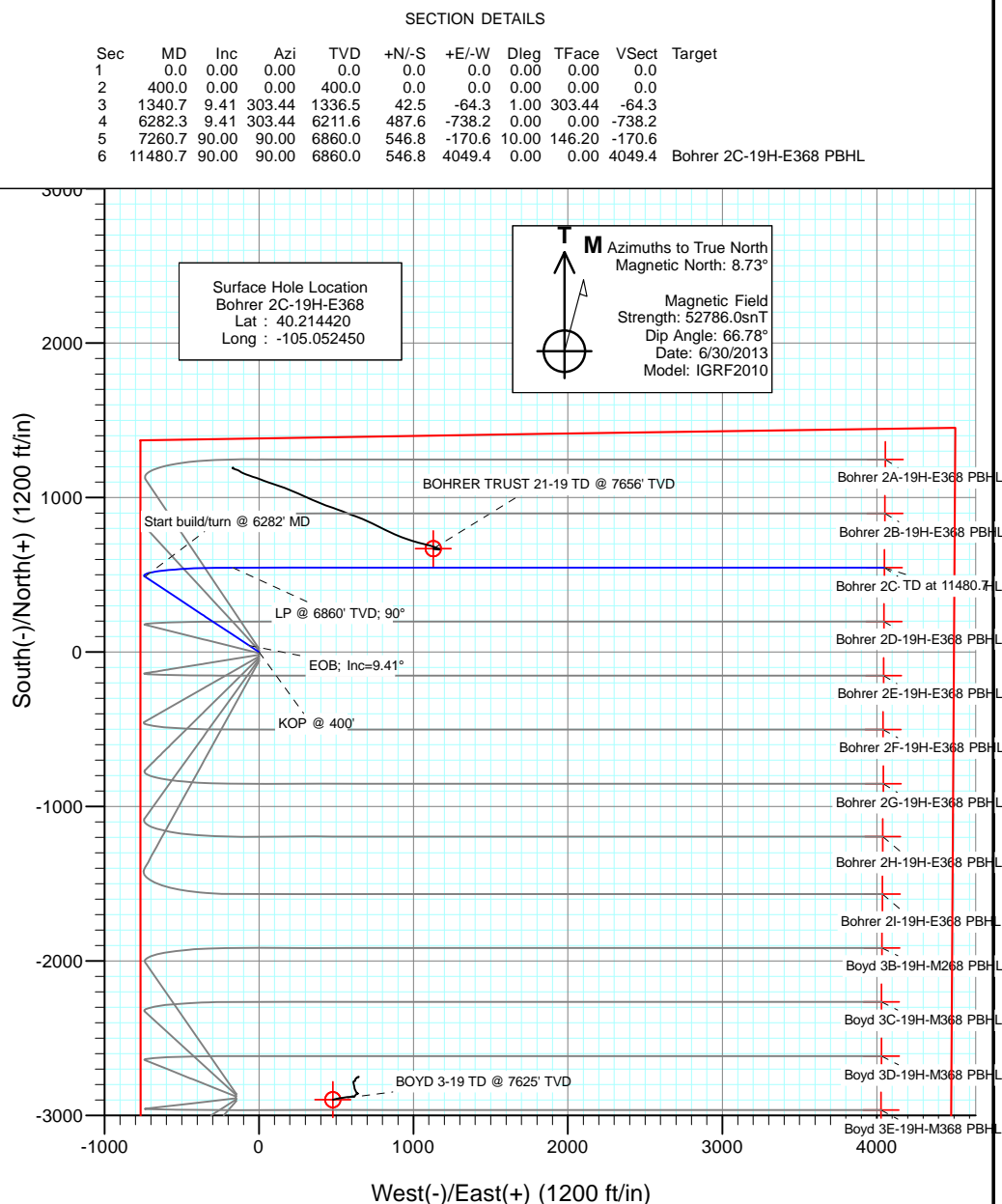
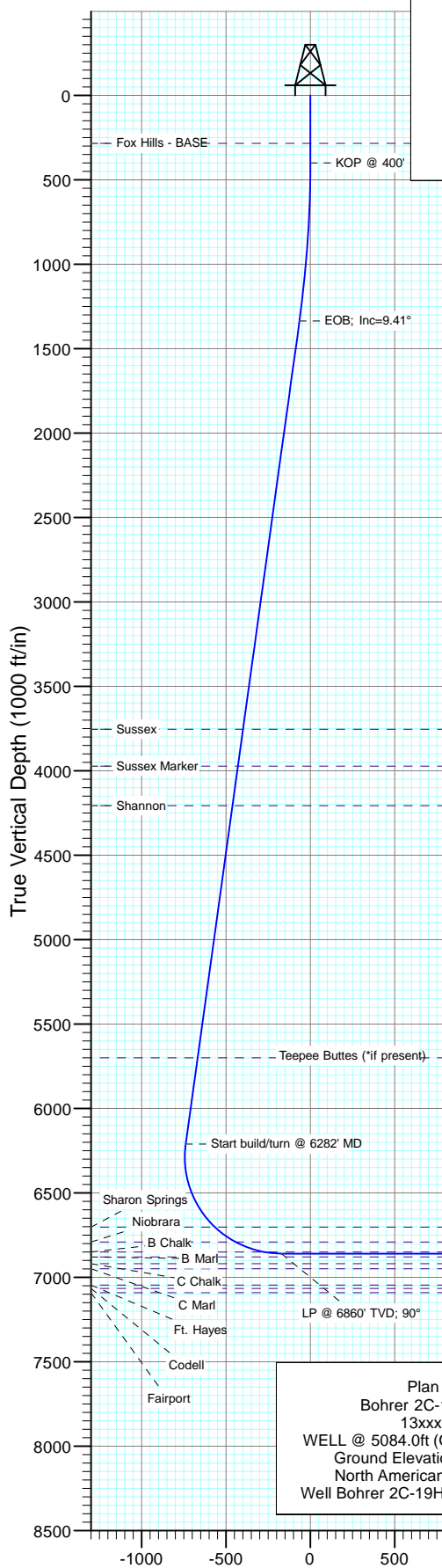




Project: DJ Wattenberg
Site: S19-T3N-R68W (Bohrer)
Well: Bohrer 2C-19H-E368
Wellbore: Hz
Design: Plan #1



DESIGN TARGET DETAILS					
Name	+N/-S	+E/-W	Northing	Easting	Latitude
Bohrer 2C-19H-E368 PBHL	546.8	4049.4	1321840.67	3129040.80	40.215920

Plan #1
Bohrer 2C-19H-E368
13xxx; LR
WELL @ 5084.0ft (Original Well Elev)
Ground Elevation @ 5059.0
North American Datum 1983
Well Bohrer 2C-19H-E368, True North

FORMATION TOP DETAILS		
TVDPath	MDPath	Formation
284.0	284.0	Fox Hills - BASE
3754.0	3791.2	Sussex
3973.0	4013.2	Sussex Marker
4207.0	4250.3	Shannon
5700.0	5763.7	Teepee Buttes (*if present)
6703.0	6825.2	Sharon Springs
6791.0	6976.0	Niobrara
6850.0	7153.2	B Chalk

Cathedral Energy Services

Planning Report

Database:	USA EDM 5000 Multi Users DB	Local Co-ordinate Reference:	Well Bohrer 2C-19H-E368
Company:	EnCana Oil & Gas (USA) Inc	TVD Reference:	WELL @ 5084.0ft (Original Well Elev)
Project:	DJ Wattenberg	MD Reference:	WELL @ 5084.0ft (Original Well Elev)
Site:	S19-T3N-R68W (Bohrer)	North Reference:	True
Well:	Bohrer 2C-19H-E368	Survey Calculation Method:	Minimum Curvature
Wellbore:	Hz		
Design:	Plan #1		

Project	DJ Wattenberg		
Map System:	US State Plane 1983	System Datum:	Mean Sea Level
Geo Datum:	North American Datum 1983		
Map Zone:	Colorado Northern Zone		

Site		S19-T3N-R68W (Bohrer)			
Site Position:		Northing:	1,318,413.14 ft	Latitude:	40.206570
From:	Lat/Long	Easting:	3,124,860.64 ft	Longitude:	-105.052980
Position Uncertainty:	0.0 ft	Slot Radius:	13.200 in	Grid Convergence:	0.29 °

Well	Bohrer 2C-19H-E368					
Well Position	+N/-S	0.0 ft	Northing:	1,321,273.47 ft	Latitude:	40.214420
	+E/-W	0.0 ft	Easting:	3,124,994.24 ft	Longitude:	-105.052450
Position Uncertainty		0.0 ft	Wellhead Elevation:	ft	Ground Level:	5,059.0 ft

Wellbore	Hz				
Magnetics	Model Name	Sample Date	Declination (°)	Dip Angle (°)	Field Strength (nT)
	IGRF2010	6/30/2013	8.73	66.78	52,786

Design	Plan #1			
Audit Notes:				
Version:	Phase:	PLAN	Tie On Depth:	0.0
Vertical Section:	Depth From (TVD) (ft)	+N/-S (ft)	+E/-W (ft)	Direction (°)
	0.0	0.0	0.0	90.00

Plan Sections										
Measured Depth (ft)	Inclination (°)	Azimuth (°)	Vertical Depth (ft)	+N/-S (ft)	+E/-W (ft)	Dogleg Rate (°/100ft)	Build Rate (°/100ft)	Turn Rate (°/100ft)	TFO (°)	Target
0.0	0.00	0.00	0.0	0.0	0.0	0.00	0.00	0.00	0.00	
400.0	0.00	0.00	400.0	0.0	0.0	0.00	0.00	0.00	0.00	
1,340.7	9.41	303.44	1,336.5	42.5	-64.3	1.00	1.00	0.00	303.44	
6,282.3	9.41	303.44	6,211.6	487.6	-738.2	0.00	0.00	0.00	0.00	
7,260.7	90.00	90.00	6,860.0	546.8	-170.6	10.00	8.24	14.98	146.20	
11,480.7	90.00	90.00	6,860.0	546.8	4,049.4	0.00	0.00	0.00	0.00	Bohrer 2C-19H-E368

Cathedral Energy Services

Planning Report

Database:	USA EDM 5000 Multi Users DB	Local Co-ordinate Reference:	Well Bohrer 2C-19H-E368
Company:	EnCana Oil & Gas (USA) Inc	TVD Reference:	WELL @ 5084.0ft (Original Well Elev)
Project:	DJ Wattenberg	MD Reference:	WELL @ 5084.0ft (Original Well Elev)
Site:	S19-T3N-R68W (Bohrer)	North Reference:	True
Well:	Bohrer 2C-19H-E368	Survey Calculation Method:	Minimum Curvature
Wellbore:	Hz		
Design:	Plan #1		

Planned Survey									
Measured Depth (ft)	Inclination (°)	Azimuth (°)	Vertical Depth (ft)	+N/-S (ft)	+E/-W (ft)	Vertical Section (ft)	Dogleg Rate (°/100ft)	Build Rate (°/100ft)	Comments / Formations
0.0	0.00	0.00	0.0	0.0	0.0	0.0	0.00	0.00	
100.0	0.00	0.00	100.0	0.0	0.0	0.0	0.00	0.00	
200.0	0.00	0.00	200.0	0.0	0.0	0.0	0.00	0.00	
284.0	0.00	0.00	284.0	0.0	0.0	0.0	0.00	0.00	Fox Hills - BASE
300.0	0.00	0.00	300.0	0.0	0.0	0.0	0.00	0.00	
400.0	0.00	0.00	400.0	0.0	0.0	0.0	0.00	0.00	KOP @ 400'
500.0	1.00	303.44	500.0	0.5	-0.7	-0.7	1.00	1.00	
600.0	2.00	303.44	600.0	1.9	-2.9	-2.9	1.00	1.00	
700.0	3.00	303.44	699.9	4.3	-6.6	-6.6	1.00	1.00	
800.0	4.00	303.44	799.7	7.7	-11.6	-11.6	1.00	1.00	
900.0	5.00	303.44	899.4	12.0	-18.2	-18.2	1.00	1.00	
1,000.0	6.00	303.44	998.9	17.3	-26.2	-26.2	1.00	1.00	
1,100.0	7.00	303.44	1,098.3	23.5	-35.6	-35.6	1.00	1.00	
1,200.0	8.00	303.44	1,197.4	30.7	-46.5	-46.5	1.00	1.00	
1,300.0	9.00	303.44	1,296.3	38.9	-58.9	-58.9	1.00	1.00	
1,340.7	9.41	303.44	1,336.5	42.5	-64.3	-64.3	1.00	1.00	EOB; Inc=9.41°
1,400.0	9.41	303.44	1,395.0	47.8	-72.4	-72.4	0.00	0.00	
1,500.0	9.41	303.44	1,493.6	56.8	-86.0	-86.0	0.00	0.00	
1,600.0	9.41	303.44	1,592.3	65.8	-99.7	-99.7	0.00	0.00	
1,700.0	9.41	303.44	1,690.9	74.8	-113.3	-113.3	0.00	0.00	
1,800.0	9.41	303.44	1,789.6	83.8	-126.9	-126.9	0.00	0.00	
1,900.0	9.41	303.44	1,888.3	92.8	-140.6	-140.6	0.00	0.00	
2,000.0	9.41	303.44	1,986.9	101.8	-154.2	-154.2	0.00	0.00	
2,100.0	9.41	303.44	2,085.6	110.9	-167.8	-167.8	0.00	0.00	
2,200.0	9.41	303.44	2,184.2	119.9	-181.5	-181.5	0.00	0.00	
2,300.0	9.41	303.44	2,282.9	128.9	-195.1	-195.1	0.00	0.00	
2,400.0	9.41	303.44	2,381.5	137.9	-208.8	-208.8	0.00	0.00	
2,500.0	9.41	303.44	2,480.2	146.9	-222.4	-222.4	0.00	0.00	
2,600.0	9.41	303.44	2,578.8	155.9	-236.0	-236.0	0.00	0.00	
2,700.0	9.41	303.44	2,677.5	164.9	-249.7	-249.7	0.00	0.00	
2,800.0	9.41	303.44	2,776.2	173.9	-263.3	-263.3	0.00	0.00	
2,900.0	9.41	303.44	2,874.8	182.9	-277.0	-277.0	0.00	0.00	
3,000.0	9.41	303.44	2,973.5	191.9	-290.6	-290.6	0.00	0.00	
3,100.0	9.41	303.44	3,072.1	200.9	-304.2	-304.2	0.00	0.00	
3,200.0	9.41	303.44	3,170.8	209.9	-317.9	-317.9	0.00	0.00	
3,300.0	9.41	303.44	3,269.4	218.9	-331.5	-331.5	0.00	0.00	
3,400.0	9.41	303.44	3,368.1	228.0	-345.1	-345.1	0.00	0.00	
3,500.0	9.41	303.44	3,466.7	237.0	-358.8	-358.8	0.00	0.00	
3,600.0	9.41	303.44	3,565.4	246.0	-372.4	-372.4	0.00	0.00	
3,700.0	9.41	303.44	3,664.1	255.0	-386.1	-386.1	0.00	0.00	
3,791.2	9.41	303.44	3,754.0	263.2	-398.5	-398.5	0.00	0.00	Sussex
3,800.0	9.41	303.44	3,762.7	264.0	-399.7	-399.7	0.00	0.00	
3,900.0	9.41	303.44	3,861.4	273.0	-413.3	-413.3	0.00	0.00	
4,000.0	9.41	303.44	3,960.0	282.0	-427.0	-427.0	0.00	0.00	
4,013.2	9.41	303.44	3,973.0	283.2	-428.8	-428.8	0.00	0.00	Sussex Marker
4,100.0	9.41	303.44	4,058.7	291.0	-440.6	-440.6	0.00	0.00	
4,200.0	9.41	303.44	4,157.3	300.0	-454.2	-454.2	0.00	0.00	
4,250.3	9.41	303.44	4,207.0	304.5	-461.1	-461.1	0.00	0.00	Shannon
4,300.0	9.41	303.44	4,256.0	309.0	-467.9	-467.9	0.00	0.00	
4,400.0	9.41	303.44	4,354.6	318.0	-481.5	-481.5	0.00	0.00	
4,500.0	9.41	303.44	4,453.3	327.0	-495.2	-495.2	0.00	0.00	
4,600.0	9.41	303.44	4,552.0	336.0	-508.8	-508.8	0.00	0.00	

Cathedral Energy Services

Planning Report

Database:	USA EDM 5000 Multi Users DB	Local Co-ordinate Reference:	Well Bohrer 2C-19H-E368
Company:	EnCana Oil & Gas (USA) Inc	TVD Reference:	WELL @ 5084.0ft (Original Well Elev)
Project:	DJ Wattenberg	MD Reference:	WELL @ 5084.0ft (Original Well Elev)
Site:	S19-T3N-R68W (Bohrer)	North Reference:	True
Well:	Bohrer 2C-19H-E368	Survey Calculation Method:	Minimum Curvature
Wellbore:	Hz		
Design:	Plan #1		

Planned Survey									
Measured Depth (ft)	Inclination (°)	Azimuth (°)	Vertical Depth (ft)	+N/-S (ft)	+E/-W (ft)	Vertical Section (ft)	Dogleg Rate (°/100ft)	Build Rate (°/100ft)	Comments / Formations
4,700.0	9.41	303.44	4,650.6	345.0	-522.4	-522.4	0.00	0.00	
4,800.0	9.41	303.44	4,749.3	354.1	-536.1	-536.1	0.00	0.00	
4,900.0	9.41	303.44	4,847.9	363.1	-549.7	-549.7	0.00	0.00	
5,000.0	9.41	303.44	4,946.6	372.1	-563.4	-563.4	0.00	0.00	
5,100.0	9.41	303.44	5,045.2	381.1	-577.0	-577.0	0.00	0.00	
5,200.0	9.41	303.44	5,143.9	390.1	-590.6	-590.6	0.00	0.00	
5,300.0	9.41	303.44	5,242.5	399.1	-604.3	-604.3	0.00	0.00	
5,400.0	9.41	303.44	5,341.2	408.1	-617.9	-617.9	0.00	0.00	
5,500.0	9.41	303.44	5,439.8	417.1	-631.5	-631.5	0.00	0.00	
5,600.0	9.41	303.44	5,538.5	426.1	-645.2	-645.2	0.00	0.00	
5,700.0	9.41	303.44	5,637.2	435.1	-658.8	-658.8	0.00	0.00	
5,763.7	9.41	303.44	5,700.0	440.9	-667.5	-667.5	0.00	0.00	Teepee Buttes (*if present)
5,800.0	9.41	303.44	5,735.8	444.1	-672.5	-672.5	0.00	0.00	
5,900.0	9.41	303.44	5,834.5	453.1	-686.1	-686.1	0.00	0.00	
6,000.0	9.41	303.44	5,933.1	462.1	-699.7	-699.7	0.00	0.00	
6,100.0	9.41	303.44	6,031.8	471.2	-713.4	-713.4	0.00	0.00	
6,200.0	9.41	303.44	6,130.4	480.2	-727.0	-727.0	0.00	0.00	
6,282.3	9.41	303.44	6,211.6	487.6	-738.2	-738.2	0.00	0.00	Start build/turn @ 6282' MD
6,300.0	7.99	310.55	6,229.1	489.2	-740.4	-740.4	10.00	-7.97	
6,400.0	6.53	37.11	6,328.6	498.2	-742.2	-742.2	10.00	-1.46	
6,500.0	14.86	69.87	6,426.8	507.2	-726.7	-726.7	10.00	8.33	
6,600.0	24.46	78.42	6,520.9	515.8	-694.3	-694.3	10.00	9.60	
6,700.0	34.29	82.30	6,607.9	523.8	-646.0	-646.0	10.00	9.82	
6,800.0	44.18	84.61	6,685.3	530.8	-583.2	-583.2	10.00	9.89	
6,825.2	46.68	85.06	6,703.0	532.4	-565.3	-565.3	10.00	9.92	Sharon Springs
6,900.0	54.11	86.21	6,750.6	536.8	-507.9	-507.9	10.00	9.93	
6,976.0	61.66	87.18	6,791.0	540.5	-443.7	-443.7	10.00	9.94	Niobrara
7,000.0	64.05	87.45	6,802.0	541.5	-422.4	-422.4	10.00	9.95	
7,100.0	74.00	88.50	6,837.7	544.7	-329.2	-329.2	10.00	9.95	
7,153.2	79.30	89.01	6,850.0	545.9	-277.4	-277.4	10.00	9.96	B Chalk
7,200.0	83.96	89.45	6,856.8	546.5	-231.2	-231.2	10.00	9.96	
7,260.7	90.00	90.00	6,860.0	546.8	-170.6	-170.6	10.00	9.96	LP @ 6860' TVD; 90°
7,300.0	90.00	90.00	6,860.0	546.8	-131.3	-131.3	0.00	0.00	
7,400.0	90.00	90.00	6,860.0	546.8	-31.3	-31.3	0.00	0.00	
7,500.0	90.00	90.00	6,860.0	546.8	68.7	68.7	0.00	0.00	
7,600.0	90.00	90.00	6,860.0	546.8	168.7	168.7	0.00	0.00	
7,700.0	90.00	90.00	6,860.0	546.8	268.7	268.7	0.00	0.00	
7,800.0	90.00	90.00	6,860.0	546.8	368.7	368.7	0.00	0.00	
7,900.0	90.00	90.00	6,860.0	546.8	468.7	468.7	0.00	0.00	
8,000.0	90.00	90.00	6,860.0	546.8	568.7	568.7	0.00	0.00	
8,100.0	90.00	90.00	6,860.0	546.8	668.7	668.7	0.00	0.00	
8,200.0	90.00	90.00	6,860.0	546.8	768.7	768.7	0.00	0.00	
8,300.0	90.00	90.00	6,860.0	546.8	868.7	868.7	0.00	0.00	
8,400.0	90.00	90.00	6,860.0	546.8	968.7	968.7	0.00	0.00	
8,500.0	90.00	90.00	6,860.0	546.8	1,068.7	1,068.7	0.00	0.00	
8,600.0	90.00	90.00	6,860.0	546.8	1,168.7	1,168.7	0.00	0.00	
8,700.0	90.00	90.00	6,860.0	546.8	1,268.7	1,268.7	0.00	0.00	
8,800.0	90.00	90.00	6,860.0	546.8	1,368.7	1,368.7	0.00	0.00	
8,900.0	90.00	90.00	6,860.0	546.8	1,468.7	1,468.7	0.00	0.00	
9,000.0	90.00	90.00	6,860.0	546.8	1,568.7	1,568.7	0.00	0.00	
9,100.0	90.00	90.00	6,860.0	546.8	1,668.7	1,668.7	0.00	0.00	
9,200.0	90.00	90.00	6,860.0	546.8	1,768.7	1,768.7	0.00	0.00	

Cathedral Energy Services

Planning Report

Database:	USA EDM 5000 Multi Users DB	Local Co-ordinate Reference:	Well Bohrer 2C-19H-E368
Company:	EnCana Oil & Gas (USA) Inc	TVD Reference:	WELL @ 5084.0ft (Original Well Elev)
Project:	DJ Wattenberg	MD Reference:	WELL @ 5084.0ft (Original Well Elev)
Site:	S19-T3N-R68W (Bohrer)	North Reference:	True
Well:	Bohrer 2C-19H-E368	Survey Calculation Method:	Minimum Curvature
Wellbore:	Hz		
Design:	Plan #1		

Planned Survey									
Measured Depth (ft)	Inclination (°)	Azimuth (°)	Vertical Depth (ft)	+N/-S (ft)	+E/-W (ft)	Vertical Section (ft)	Dogleg Rate (°/100ft)	Build Rate (°/100ft)	Comments / Formations
9,300.0	90.00	90.00	6,860.0	546.8	1,868.7	1,868.7	0.00	0.00	
9,400.0	90.00	90.00	6,860.0	546.8	1,968.7	1,968.7	0.00	0.00	
9,500.0	90.00	90.00	6,860.0	546.8	2,068.7	2,068.7	0.00	0.00	
9,600.0	90.00	90.00	6,860.0	546.8	2,168.7	2,168.7	0.00	0.00	
9,700.0	90.00	90.00	6,860.0	546.8	2,268.7	2,268.7	0.00	0.00	
9,800.0	90.00	90.00	6,860.0	546.8	2,368.7	2,368.7	0.00	0.00	
9,900.0	90.00	90.00	6,860.0	546.8	2,468.7	2,468.7	0.00	0.00	
10,000.0	90.00	90.00	6,860.0	546.8	2,568.7	2,568.7	0.00	0.00	
10,100.0	90.00	90.00	6,860.0	546.8	2,668.7	2,668.7	0.00	0.00	
10,200.0	90.00	90.00	6,860.0	546.8	2,768.7	2,768.7	0.00	0.00	
10,300.0	90.00	90.00	6,860.0	546.8	2,868.7	2,868.7	0.00	0.00	
10,400.0	90.00	90.00	6,860.0	546.8	2,968.7	2,968.7	0.00	0.00	
10,500.0	90.00	90.00	6,860.0	546.8	3,068.7	3,068.7	0.00	0.00	
10,600.0	90.00	90.00	6,860.0	546.8	3,168.7	3,168.7	0.00	0.00	
10,700.0	90.00	90.00	6,860.0	546.8	3,268.7	3,268.7	0.00	0.00	
10,800.0	90.00	90.00	6,860.0	546.8	3,368.7	3,368.7	0.00	0.00	
10,900.0	90.00	90.00	6,860.0	546.8	3,468.7	3,468.7	0.00	0.00	
11,000.0	90.00	90.00	6,860.0	546.8	3,568.7	3,568.7	0.00	0.00	
11,100.0	90.00	90.00	6,860.0	546.8	3,668.7	3,668.7	0.00	0.00	
11,200.0	90.00	90.00	6,860.0	546.8	3,768.7	3,768.7	0.00	0.00	
11,300.0	90.00	90.00	6,860.0	546.8	3,868.7	3,868.7	0.00	0.00	
11,400.0	90.00	90.00	6,860.0	546.8	3,968.7	3,968.7	0.00	0.00	
11,480.7	90.00	90.00	6,860.0	546.8	4,049.4	4,049.4	0.00	0.00	TD at 11480.7

Targets									
Target Name	Dip Angle (°)	Dip Dir. (°)	TVD (ft)	+N/-S (ft)	+E/-W (ft)	Northing (ft)	Easting (ft)	Latitude	Longitude
- hit/miss target									
- Shape									
Bohrer 2C-19H-E368 PE	0.00	0.00	6,860.0	546.8	4,049.4	1,321,840.67	3,129,040.80	40.215920	-105.037950
- plan hits target center									
- Point									

Formations						
Measured Depth (ft)	Vertical Depth (ft)	Name	Lithology	Dip (°)	Dip Direction (°)	
284.0	284.0	Fox Hills - BASE				
3,791.2	3,754.0	Sussex				
4,013.2	3,973.0	Sussex Marker				
4,250.3	4,207.0	Shannon				
5,763.7	5,700.0	Teepee Buttes (*if present)				
6,825.2	6,703.0	Sharon Springs				
6,976.0	6,791.0	Niobrara				
7,153.2	6,850.0	B Chalk				

Cathedral Energy Services

Planning Report

Database:	USA EDM 5000 Multi Users DB	Local Co-ordinate Reference:	Well Bohrer 2C-19H-E368
Company:	EnCana Oil & Gas (USA) Inc	TVD Reference:	WELL @ 5084.0ft (Original Well Elev)
Project:	DJ Wattenberg	MD Reference:	WELL @ 5084.0ft (Original Well Elev)
Site:	S19-T3N-R68W (Bohrer)	North Reference:	True
Well:	Bohrer 2C-19H-E368	Survey Calculation Method:	Minimum Curvature
Wellbore:	Hz		
Design:	Plan #1		

Plan Annotations				
Measured Depth (ft)	Vertical Depth (ft)	Local Coordinates		Comment
		+N/-S (ft)	+E/-W (ft)	
400.0	400.0	0.0	0.0	KOP @ 400'
1,340.7	1,336.5	42.5	-64.3	EOB; Inc=9.41°
6,282.3	6,211.6	487.6	-738.2	Start build/turn @ 6282' MD
7,260.7	6,860.0	546.8	-170.6	LP @ 6860' TVD; 90°
11,480.7	6,860.0	546.8	4,049.4	TD at 11480.7

EnCana Oil & Gas (USA) Inc

DJ Wattenberg

S19-T3N-R68W (Bohrer)

Bohrer 2C-19H-E368

Hz

Plan #1

Anticollision Report

30 June, 2013

Cathedral Energy Services

Anticollision Report

Company:	EnCana Oil & Gas (USA) Inc	Local Co-ordinate Reference:	Well Bohrer 2C-19H-E368
Project:	DJ Wattenberg	TVD Reference:	WELL @ 5084.0ft (Original Well Elev)
Reference Site:	S19-T3N-R68W (Bohrer)	MD Reference:	WELL @ 5084.0ft (Original Well Elev)
Site Error:	0.0ft	North Reference:	True
Reference Well:	Bohrer 2C-19H-E368	Survey Calculation Method:	Minimum Curvature
Well Error:	0.0ft	Output errors are at	2.00 sigma
Reference Wellbore	Hz	Database:	USA EDM 5000 Multi Users DB
Reference Design:	Plan #1	Offset TVD Reference:	Offset Datum

Reference	Plan #1		
Filter type:	NO GLOBAL FILTER: Using user defined selection & filtering criteria		
Interpolation Method:	MD Interval 100.0ft	Error Model:	Systematic Ellipse
Depth Range:	Unlimited	Scan Method:	Closest Approach 3D
Results Limited by:	Maximum center-center distance of 500.0ft	Error Surface:	Elliptical Conic
Warning Levels Evaluated at:	2.00 Sigma		

Survey Tool Program		Date	6/30/2013		
From (ft)	To (ft)	Survey (Wellbore)	Tool Name	Description	
0.0	11,480.7	Plan #1 (Hz)	Geolink MWD	Geolink MWD	

Summary						
Site Name	Reference Measured Depth (ft)	Offset Measured Depth (ft)	Distance Between Centres (ft)	Distance Between Ellipses (ft)	Separation Factor	Warning
Offset Well - Wellbore - Design						
S19-T3N-R68W (Bohrer)						
Bohrer 2A-19H-E368 - Hz - Plan #1	166.3	167.3	21.9	21.4	44.149	CC
Bohrer 2A-19H-E368 - Hz - Plan #1	200.0	201.0	21.9	21.2	35.679	ES
Bohrer 2A-19H-E368 - Hz - Plan #1	1,400.0	1,391.6	77.8	72.3	14.055	SF
Bohrer 2B-19H-E368 - Hz - Plan #1	266.3	267.3	10.9	10.1	12.941	CC
Bohrer 2B-19H-E368 - Hz - Plan #1	300.0	301.0	10.9	10.0	11.360	ES
Bohrer 2B-19H-E368 - Hz - Plan #1	11,480.7	11,725.4	410.5	223.9	2.200	SF
Bohrer 2D-19H-E368 - Hz - Plan #1	400.0	400.0	7.3	6.0	5.566	CC, ES
Bohrer 2D-19H-E368 - Hz - Plan #1	11,480.7	11,669.1	411.1	224.5	2.204	SF
Bohrer 2E-19H-E368 - Hz - Plan #1	400.0	400.0	18.2	16.9	13.915	CC, ES
Bohrer 2E-19H-E368 - Hz - Plan #1	700.0	699.9	23.4	21.0	9.900	SF
Bohrer 2F-19H-E368 - Hz - Plan #1	400.0	400.0	29.1	27.8	22.263	CC, ES
Bohrer 2F-19H-E368 - Hz - Plan #1	700.0	699.4	35.4	33.0	14.951	SF
Bohrer 2G-19H-E368 - Hz - Plan #1	400.0	400.0	36.4	35.1	27.829	CC, ES
Bohrer 2G-19H-E368 - Hz - Plan #1	700.0	698.3	46.3	43.9	19.519	SF
Bohrer 2H-19H-E368 - Hz - Plan #1	300.0	299.0	47.4	46.4	49.424	CC, ES
Bohrer 2H-19H-E368 - Hz - Plan #1	800.0	794.2	72.5	69.8	26.452	SF
Bohrer 2I-19H-E368 - Hz - Plan #1	200.0	199.0	58.3	57.7	95.688	CC, ES
Bohrer 2I-19H-E368 - Hz - Plan #1	800.0	791.2	93.1	90.4	33.962	SF
BOHRER TRUST 21-19 (EXISTING) - ENCANA WELL - S	8,575.4	7,109.0	119.1	53.4	1.813	CC, ES, SF
BOYD 3-19 (EXISTING) - ENCANA WELL - SURVEYS						Out of range
Boyd 3B-19H-M368 - Hz - Plan #1						Out of range
Boyd 3C-19H-M368 - Hz - Plan #1						Out of range
Boyd 3D-19H-M368 - Hz - Plan #1						Out of range
Boyd 3E-19H-M368 - Hz - Plan #1						Out of range
Boyd 3F-19H-M368 - Hz - Plan #1						Out of range
Boyd 3G-19H-M368 - Hz - Plan #1						Out of range

Cathedral Energy Services

Anticollision Report

Company:	EnCana Oil & Gas (USA) Inc	Local Co-ordinate Reference:	Well Bohrer 2C-19H-E368
Project:	DJ Wattenberg	TVD Reference:	WELL @ 5084.0ft (Original Well Elev)
Reference Site:	S19-T3N-R68W (Bohrer)	MD Reference:	WELL @ 5084.0ft (Original Well Elev)
Site Error:	0.0ft	North Reference:	True
Reference Well:	Bohrer 2C-19H-E368	Survey Calculation Method:	Minimum Curvature
Well Error:	0.0ft	Output errors are at	2.00 sigma
Reference Wellbore	Hz	Database:	USA EDM 5000 Multi Users DB
Reference Design:	Plan #1	Offset TVD Reference:	Offset Datum

Offset Design S19-T3N-R68W (Bohrer) - Bohrer 2A-19H-E368 - Hz - Plan #1													Offset Site Error:	0.0 ft
Survey Program: O-Geolink MWD													Offset Well Error:	0.0 ft
Reference		Offset		Semi Major Axis			Distance							
Measured Depth (ft)	Vertical Depth (ft)	Measured Depth (ft)	Vertical Depth (ft)	Reference (ft)	Offset (ft)	Highside Toolface (°)	Offset Wellbore Centre +N/-S (ft)	+E/-W (ft)	Between Centres (ft)	Between Ellipses (ft)	Total Uncertainty Axis	Separation Factor	Warning	
0.0	0.0	1.0	1.0	0.0	0.0	0.00	21.9	0.0	21.9					
100.0	100.0	101.0	101.0	0.1	0.1	0.00	21.9	0.0	21.9	21.6	0.26	82.935		
166.3	166.3	167.3	167.3	0.2	0.2	0.00	21.9	0.0	21.9	21.4	0.50	44.149 CC		
200.0	200.0	201.0	201.0	0.3	0.3	0.00	21.9	0.0	21.9	21.2	0.61	35.679 ES		
300.0	300.0	300.7	300.7	0.5	0.5	-1.25	22.6	-0.5	22.6	21.6	0.96	23.490		
400.0	400.0	400.3	400.2	0.7	0.7	-4.50	24.8	-1.9	24.9	23.5	1.32	18.887		
500.0	500.0	500.0	499.9	0.8	0.8	49.09	28.4	-4.4	28.2	26.5	1.66	16.939		
600.0	600.0	599.3	598.9	1.0	1.0	47.76	33.4	-7.7	31.9	29.9	2.02	15.829		
700.0	699.9	698.6	698.0	1.2	1.3	47.59	39.9	-12.1	36.1	33.7	2.38	15.180		
800.0	799.7	797.9	796.9	1.4	1.5	48.24	47.8	-17.4	40.6	37.9	2.75	14.791		
900.0	899.4	897.1	895.4	1.6	1.7	49.43	57.0	-23.6	45.6	42.5	3.13	14.552		
1,000.0	998.9	996.2	993.7	1.8	2.0	50.97	67.7	-30.8	51.0	47.5	3.54	14.399		
1,100.0	1,098.3	1,095.2	1,091.6	2.1	2.3	52.73	79.8	-38.9	56.9	52.9	3.98	14.288		
1,200.0	1,197.4	1,194.1	1,189.2	2.3	2.6	54.60	93.3	-47.9	63.3	58.8	4.46	14.194		
1,300.0	1,296.3	1,292.9	1,286.3	2.6	3.0	56.52	108.2	-57.9	70.2	65.2	4.98	14.100		
1,400.0	1,395.0	1,391.6	1,383.0	2.9	3.3	58.27	124.4	-68.7	77.8	72.3	5.53	14.055 SF		
1,500.0	1,493.6	1,490.0	1,479.1	3.2	3.7	59.13	142.0	-80.5	86.7	80.6	6.10	14.217		
1,600.0	1,592.3	1,588.5	1,574.9	3.5	4.2	59.21	160.9	-93.2	97.1	90.4	6.67	14.561		
1,700.0	1,690.9	1,687.6	1,671.2	3.9	4.6	59.01	180.7	-106.4	108.1	100.9	7.23	14.949		
1,800.0	1,789.6	1,787.0	1,767.6	4.2	5.0	58.85	200.5	-119.7	119.1	111.3	7.80	15.272		
1,900.0	1,888.3	1,886.4	1,864.1	4.5	5.5	58.71	220.3	-133.0	130.1	121.8	8.37	15.544		
2,000.0	1,986.9	1,985.8	1,960.6	4.8	5.9	58.59	240.1	-146.3	141.2	132.2	8.95	15.776		
2,100.0	2,085.6	2,085.2	2,057.1	5.2	6.4	58.49	259.9	-159.6	152.2	142.7	9.53	15.977		
2,200.0	2,184.2	2,184.5	2,153.6	5.5	6.8	58.41	279.8	-172.8	163.2	153.1	10.11	16.152		
2,300.0	2,282.9	2,283.9	2,250.1	5.8	7.2	58.33	299.6	-186.1	174.2	163.6	10.69	16.305		
2,400.0	2,381.5	2,383.3	2,346.6	6.1	7.7	58.27	319.4	-199.4	185.3	174.0	11.27	16.441		
2,500.0	2,480.2	2,482.7	2,443.0	6.5	8.1	58.21	339.2	-212.7	196.3	184.4	11.85	16.561		
2,600.0	2,578.8	2,582.1	2,539.5	6.8	8.6	58.16	359.0	-226.0	207.3	194.9	12.44	16.669		
2,700.0	2,677.5	2,681.5	2,636.0	7.1	9.0	58.11	378.8	-239.2	218.3	205.3	13.02	16.767		
2,800.0	2,776.2	2,780.9	2,732.5	7.5	9.5	58.07	398.6	-252.5	229.4	215.8	13.61	16.855		
2,900.0	2,874.8	2,880.3	2,829.0	7.8	9.9	58.03	418.4	-265.8	240.4	226.2	14.20	16.935		
3,000.0	2,973.5	2,979.7	2,925.5	8.1	10.4	57.99	438.3	-279.1	251.4	236.6	14.78	17.008		
3,100.0	3,072.1	3,079.1	3,022.0	8.5	10.8	57.96	458.1	-292.3	262.5	247.1	15.37	17.074		
3,200.0	3,170.8	3,178.5	3,118.4	8.8	11.3	57.93	477.9	-305.6	273.5	257.5	15.96	17.136		
3,300.0	3,269.4	3,277.8	3,214.9	9.1	11.7	57.90	497.7	-318.9	284.5	268.0	16.55	17.193		
3,400.0	3,368.1	3,377.2	3,311.4	9.5	12.2	57.88	517.5	-332.2	295.5	278.4	17.14	17.245		
3,500.0	3,466.7	3,476.6	3,407.9	9.8	12.6	57.85	537.3	-345.5	306.6	288.8	17.73	17.294		
3,600.0	3,565.4	3,576.0	3,504.4	10.1	13.1	57.83	557.1	-358.7	317.6	299.3	18.32	17.339		
3,700.0	3,664.1	3,675.4	3,600.9	10.5	13.6	57.81	576.9	-372.0	328.6	309.7	18.91	17.381		
3,800.0	3,762.7	3,774.8	3,697.4	10.8	14.0	57.79	596.8	-385.3	339.6	320.1	19.50	17.420		
3,900.0	3,861.4	3,874.2	3,793.8	11.1	14.5	57.77	616.6	-398.6	350.7	330.6	20.09	17.457		
4,000.0	3,960.0	3,973.6	3,890.3	11.5	14.9	57.76	636.4	-411.8	361.7	341.0	20.68	17.492		
4,100.0	4,058.7	4,073.0	3,986.8	11.8	15.4	57.74	656.2	-425.1	372.7	351.4	21.27	17.524		
4,200.0	4,157.3	4,172.4	4,083.3	12.1	15.8	57.73	676.0	-438.4	383.7	361.9	21.86	17.555		
4,300.0	4,256.0	4,271.7	4,179.8	12.5	16.3	57.71	695.8	-451.7	394.8	372.3	22.45	17.584		
4,400.0	4,354.6	4,371.1	4,276.3	12.8	16.7	57.70	715.6	-465.0	405.8	382.8	23.04	17.611		
4,500.0	4,453.3	4,470.5	4,372.8	13.2	17.2	57.69	735.5	-478.2	416.8	393.2	23.63	17.637		
4,600.0	4,552.0	4,569.9	4,469.2	13.5	17.6	57.67	755.3	-491.5	427.8	403.6	24.22	17.662		
4,700.0	4,650.6	4,669.3	4,565.7	13.8	18.1	57.66	775.1	-504.8	438.9	414.1	24.82	17.685		
4,800.0	4,749.3	4,768.7	4,662.2	14.2	18.5	57.65	794.9	-518.1	449.9	424.5	25.41	17.707		
4,900.0	4,847.9	4,868.1	4,758.7	14.5	19.0	57.64	814.7	-531.4	460.9	434.9	26.00	17.728		
5,000.0	4,946.6	4,967.5	4,855.2	14.8	19.4	57.63	834.5	-544.6	472.0	445.4	26.59	17.748		

CC - Min centre to center distance or convergent point, SF - min separation factor, ES - min ellipse separation

Cathedral Energy Services

Anticollision Report

Company:	EnCana Oil & Gas (USA) Inc	Local Co-ordinate Reference:	Well Bohrer 2C-19H-E368
Project:	DJ Wattenberg	TVD Reference:	WELL @ 5084.0ft (Original Well Elev)
Reference Site:	S19-T3N-R68W (Bohrer)	MD Reference:	WELL @ 5084.0ft (Original Well Elev)
Site Error:	0.0ft	North Reference:	True
Reference Well:	Bohrer 2C-19H-E368	Survey Calculation Method:	Minimum Curvature
Well Error:	0.0ft	Output errors are at	2.00 sigma
Reference Wellbore	Hz	Database:	USA EDM 5000 Multi Users DB
Reference Design:	Plan #1	Offset TVD Reference:	Offset Datum

Offset Design													S19-T3N-R68W (Bohrer) - Bohrer 2A-19H-E368 - Hz - Plan #1		Offset Site Error:		0.0 ft	
Survey Program: 0-Geolink MWD															Offset Well Error:		0.0 ft	
Reference		Offset		Semi Major Axis			Distance						Warning					
Measured Depth	Vertical Depth	Measured Depth	Vertical Depth	Reference	Offset	Highside Toolface	Offset Wellbore Centre		Between Centres	Between Ellipses	Total Uncertainty Axis	Separation Factor						
(ft)	(ft)	(ft)	(ft)	(ft)	(ft)	(°)	+N/-S (ft)	+E/-W (ft)										
5,100.0	5,045.2	5,066.9	4,951.7	15.2	19.9	57.62	854.3	-557.9	483.0	455.8	27.18	17.767						
5,200.0	5,143.9	5,166.3	5,048.2	15.5	20.3	57.61	874.1	-571.2	494.0	466.2	27.78	17.785						

Cathedral Energy Services

Anticollision Report

Company:	EnCana Oil & Gas (USA) Inc	Local Co-ordinate Reference:	Well Bohrer 2C-19H-E368
Project:	DJ Wattenberg	TVD Reference:	WELL @ 5084.0ft (Original Well Elev)
Reference Site:	S19-T3N-R68W (Bohrer)	MD Reference:	WELL @ 5084.0ft (Original Well Elev)
Site Error:	0.0ft	North Reference:	True
Reference Well:	Bohrer 2C-19H-E368	Survey Calculation Method:	Minimum Curvature
Well Error:	0.0ft	Output errors are at	2.00 sigma
Reference Wellbore	Hz	Database:	USA EDM 5000 Multi Users DB
Reference Design:	Plan #1	Offset TVD Reference:	Offset Datum

Offset Design S19-T3N-R68W (Bohrer) - Bohrer 2B-19H-E368 - Hz - Plan #1													Offset Site Error:	0.0 ft
Survey Program: O-Geolink MWD													Offset Well Error:	0.0 ft
Reference		Offset		Semi Major Axis		Distance		Total		Separation		Warning		
Measured Depth (ft)	Vertical Depth (ft)	Measured Depth (ft)	Vertical Depth (ft)	Reference (ft)	Offset (ft)	Highside Toolface (°)	Offset Wellbore Centre +N/-S (ft)	+E/-W (ft)	Between Centres (ft)	Between Ellipses (ft)	Uncertainty Axis	Factor		
0.0	0.0	1.0	1.0	0.0	0.0	0.00	10.9	0.0	10.9					
100.0	100.0	101.0	101.0	0.1	0.1	0.00	10.9	0.0	10.9	10.7	0.26	41.452		
200.0	200.0	201.0	201.0	0.3	0.3	0.00	10.9	0.0	10.9	10.3	0.61	17.833		
266.3	266.3	267.3	267.3	0.4	0.4	0.00	10.9	0.0	10.9	10.1	0.84	12.941 CC		
300.0	300.0	301.0	301.0	0.5	0.5	0.00	10.9	0.0	10.9	10.0	0.96	11.360 ES		
400.0	400.0	400.8	400.8	0.7	0.7	-2.98	11.6	-0.6	11.6	10.3	1.31	8.841		
500.0	500.0	500.7	500.6	0.8	0.8	49.29	13.5	-2.4	13.1	11.5	1.66	7.906		
600.0	600.0	600.4	600.3	1.0	1.0	47.17	16.7	-5.3	15.0	13.0	2.02	7.443		
700.0	699.9	700.2	699.9	1.2	1.2	46.61	21.2	-9.5	17.1	14.8	2.38	7.216		
800.0	799.7	800.0	799.4	1.4	1.4	47.14	26.9	-14.8	19.5	16.8	2.75	7.118		
900.0	899.4	899.5	898.5	1.6	1.7	48.36	33.9	-21.3	22.2	19.1	3.13	7.094		
1,000.0	998.9	999.2	997.4	1.8	1.9	50.02	42.2	-28.9	25.2	21.6	3.54	7.110		
1,100.0	1,098.3	1,098.7	1,096.2	2.1	2.2	51.93	51.8	-37.7	28.5	24.5	3.98	7.144		
1,200.0	1,197.4	1,198.3	1,194.6	2.3	2.5	53.96	62.5	-47.7	32.1	27.6	4.46	7.183		
1,300.0	1,296.3	1,297.7	1,292.7	2.6	2.8	56.01	74.6	-58.8	36.0	31.0	4.99	7.216		
1,400.0	1,395.0	1,397.2	1,390.5	2.9	3.1	57.68	87.8	-71.1	40.4	34.9	5.55	7.289		
1,500.0	1,493.6	1,497.0	1,488.5	3.2	3.5	58.43	101.8	-84.0	45.4	39.3	6.11	7.434		
1,600.0	1,592.3	1,596.9	1,586.6	3.5	3.8	59.04	115.7	-96.8	50.4	43.8	6.69	7.543		
1,700.0	1,690.9	1,696.8	1,684.6	3.9	4.2	59.53	129.7	-109.7	55.5	48.2	7.27	7.626		
1,800.0	1,789.6	1,796.6	1,782.7	4.2	4.5	59.94	143.6	-122.6	60.5	52.6	7.86	7.692		
1,900.0	1,888.3	1,896.5	1,880.7	4.5	4.9	60.29	157.6	-135.5	65.5	57.0	8.46	7.744		
2,000.0	1,986.9	1,996.4	1,978.8	4.8	5.3	60.59	171.5	-148.4	70.5	61.5	9.06	7.786		
2,100.0	2,085.6	2,096.3	2,076.8	5.2	5.6	60.85	185.5	-161.3	75.5	65.9	9.66	7.821		
2,200.0	2,184.2	2,196.1	2,174.9	5.5	6.0	61.08	199.4	-174.2	80.6	70.3	10.26	7.849		
2,300.0	2,282.9	2,296.0	2,272.9	5.8	6.4	61.28	213.4	-187.0	85.6	74.7	10.87	7.873		
2,400.0	2,381.5	2,395.9	2,371.0	6.1	6.8	61.46	227.3	-199.9	90.6	79.1	11.48	7.892		
2,500.0	2,480.2	2,495.8	2,469.0	6.5	7.1	61.62	241.2	-212.8	95.6	83.5	12.09	7.909		
2,600.0	2,578.8	2,595.6	2,567.1	6.8	7.5	61.76	255.2	-225.7	100.6	87.9	12.70	7.924		
2,700.0	2,677.5	2,695.5	2,665.1	7.1	7.9	61.89	269.1	-238.6	105.7	92.4	13.32	7.936		
2,800.0	2,776.2	2,795.4	2,763.2	7.5	8.2	62.01	283.1	-251.5	110.7	96.8	13.93	7.947		
2,900.0	2,874.8	2,895.3	2,861.2	7.8	8.6	62.12	297.0	-264.3	115.7	101.2	14.55	7.956		
3,000.0	2,973.5	2,995.1	2,959.3	8.1	9.0	62.22	311.0	-277.2	120.8	105.6	15.16	7.965		
3,100.0	3,072.1	3,095.0	3,057.3	8.5	9.4	62.31	324.9	-290.1	125.8	110.0	15.78	7.972		
3,200.0	3,170.8	3,194.9	3,155.4	8.8	9.7	62.39	338.9	-303.0	130.8	114.4	16.40	7.978		
3,300.0	3,269.4	3,294.7	3,253.4	9.1	10.1	62.47	352.8	-315.9	135.8	118.8	17.01	7.984		
3,400.0	3,368.1	3,394.6	3,351.5	9.5	10.5	62.54	366.8	-328.8	140.9	123.2	17.63	7.989		
3,500.0	3,466.7	3,494.5	3,449.5	9.8	10.9	62.61	380.7	-341.7	145.9	127.6	18.25	7.994		
3,600.0	3,565.4	3,594.4	3,547.6	10.1	11.2	62.67	394.6	-354.5	150.9	132.1	18.87	7.998		
3,700.0	3,664.1	3,694.2	3,645.7	10.5	11.6	62.73	408.6	-367.4	156.0	136.5	19.49	8.001		
3,800.0	3,762.7	3,794.1	3,743.7	10.8	12.0	62.79	422.5	-380.3	161.0	140.9	20.11	8.005		
3,900.0	3,861.4	3,894.0	3,841.8	11.1	12.4	62.84	436.5	-393.2	166.0	145.3	20.73	8.008		
4,000.0	3,960.0	3,993.9	3,939.8	11.5	12.7	62.89	450.4	-406.1	171.0	149.7	21.35	8.010		
4,100.0	4,058.7	4,093.7	4,037.9	11.8	13.1	62.93	464.4	-419.0	176.1	154.1	21.97	8.013		
4,200.0	4,157.3	4,193.6	4,135.9	12.1	13.5	62.98	478.3	-431.9	181.1	158.5	22.59	8.015		
4,300.0	4,256.0	4,293.5	4,234.0	12.5	13.9	63.02	492.3	-444.7	186.1	162.9	23.22	8.017		
4,400.0	4,354.6	4,393.4	4,332.0	12.8	14.2	63.06	506.2	-457.6	191.2	167.3	23.84	8.019		
4,500.0	4,453.3	4,493.2	4,430.1	13.2	14.6	63.09	520.2	-470.5	196.2	171.7	24.46	8.021		
4,600.0	4,552.0	4,593.1	4,528.1	13.5	15.0	63.13	534.1	-483.4	201.2	176.1	25.08	8.023		
4,700.0	4,650.6	4,693.0	4,626.2	13.8	15.4	63.16	548.1	-496.3	206.3	180.6	25.70	8.024		
4,800.0	4,749.3	4,792.8	4,724.2	14.2	15.7	63.19	562.0	-509.2	211.3	185.0	26.33	8.026		
4,900.0	4,847.9	4,892.7	4,822.3	14.5	16.1	63.22	575.9	-522.1	216.3	189.4	26.95	8.027		
5,000.0	4,946.6	4,992.6	4,920.3	14.8	16.5	63.25	589.9	-534.9	221.3	193.8	27.57	8.028		

CC - Min centre to center distance or convergent point, SF - min separation factor, ES - min ellipse separation

Cathedral Energy Services

Anticollision Report

Company:	EnCana Oil & Gas (USA) Inc	Local Co-ordinate Reference:	Well Bohrer 2C-19H-E368
Project:	DJ Wattenberg	TVD Reference:	WELL @ 5084.0ft (Original Well Elev)
Reference Site:	S19-T3N-R68W (Bohrer)	MD Reference:	WELL @ 5084.0ft (Original Well Elev)
Site Error:	0.0ft	North Reference:	True
Reference Well:	Bohrer 2C-19H-E368	Survey Calculation Method:	Minimum Curvature
Well Error:	0.0ft	Output errors are at	2.00 sigma
Reference Wellbore	Hz	Database:	USA EDM 5000 Multi Users DB
Reference Design:	Plan #1	Offset TVD Reference:	Offset Datum

Offset Design S19-T3N-R68W (Bohrer) - Bohrer 2B-19H-E368 - Hz - Plan #1													Offset Site Error:	0.0 ft
Survey Program: O-Geolink MWD													Offset Well Error:	0.0 ft
Reference		Offset		Semi Major Axis			Distance				Total Uncertainty Axis	Separation Factor	Warning	
Measured Depth (ft)	Vertical Depth (ft)	Measured Depth (ft)	Vertical Depth (ft)	Reference (ft)	Offset (ft)	Highside Toolface (°)	Offset Wellbore Centre +N/-S (ft)	+E/-W (ft)	Between Centres (ft)	Between Ellipses (ft)				
5,100.0	5,045.2	5,092.5	5,018.4	15.2	16.9	63.28	603.8	-547.8	226.4	198.2	28.19	8.029		
5,200.0	5,143.9	5,192.3	5,116.4	15.5	17.2	63.31	617.8	-560.7	231.4	202.6	28.82	8.030		
5,300.0	5,242.5	5,292.2	5,214.5	15.8	17.6	63.33	631.7	-573.6	236.4	207.0	29.44	8.031		
5,400.0	5,341.2	5,392.1	5,312.5	16.2	18.0	63.36	645.7	-586.5	241.5	211.4	30.06	8.032		
5,500.0	5,439.8	5,492.0	5,410.6	16.5	18.4	63.38	659.6	-599.4	246.5	215.8	30.69	8.033		
5,600.0	5,538.5	5,591.8	5,508.6	16.8	18.7	63.40	673.6	-612.3	251.5	220.2	31.31	8.034		
5,700.0	5,637.2	5,691.7	5,606.7	17.2	19.1	63.42	687.5	-625.1	256.6	224.6	31.93	8.034		
5,800.0	5,735.8	5,791.6	5,704.7	17.5	19.5	63.44	701.5	-638.0	261.6	229.0	32.56	8.035		
5,900.0	5,834.5	5,891.5	5,802.8	17.9	19.9	63.46	715.4	-650.9	266.6	233.4	33.18	8.036		
6,000.0	5,933.1	5,991.3	5,900.8	18.2	20.3	63.48	729.3	-663.8	271.7	237.8	33.80	8.036		
6,100.0	6,031.8	6,091.2	5,998.9	18.5	20.6	63.50	743.3	-676.7	276.7	242.3	34.43	8.037		
6,200.0	6,130.4	6,191.1	6,096.9	18.9	21.0	63.52	757.2	-689.6	281.7	246.7	35.05	8.037		
6,300.0	6,229.1	6,290.9	6,195.0	19.2	21.4	63.54	771.2	-702.4	286.7	251.0	35.68	8.037		
6,400.0	6,328.6	6,390.1	6,292.3	19.3	21.8	-31.45	785.0	-715.2	290.4	254.9	35.54	8.173		
6,500.0	6,426.8	6,485.8	6,386.3	19.3	22.1	-68.70	798.4	-727.6	294.1	259.8	34.27	8.583		
6,600.0	6,520.9	6,578.5	6,477.4	19.0	22.4	-83.60	811.4	-738.0	302.0	269.8	32.23	9.372		
6,700.0	6,607.9	6,679.1	6,576.9	18.6	22.6	-93.90	825.5	-734.7	316.1	286.1	30.00	10.538		
6,800.0	6,685.3	6,790.2	6,684.1	18.1	22.6	-102.09	840.7	-710.8	335.2	307.2	27.93	12.001		
6,900.0	6,750.6	6,914.7	6,796.3	17.5	22.3	-108.88	856.7	-659.8	356.9	330.8	26.16	13.643		
7,000.0	6,802.0	7,055.8	6,906.8	17.0	21.9	-114.43	872.4	-574.1	378.6	353.7	24.85	15.233		
7,100.0	6,837.7	7,215.0	7,002.4	16.5	21.2	-118.59	886.0	-448.1	396.8	372.5	24.26	16.357		
7,200.0	6,856.8	7,390.3	7,063.6	16.2	20.7	-121.05	894.7	-284.8	408.1	383.4	24.72	16.505		
7,300.0	6,860.0	7,544.7	7,076.0	16.0	20.5	-121.58	896.5	-131.3	410.5	384.4	26.16	15.693		
7,400.0	6,860.0	7,644.7	7,076.0	16.4	20.6	-121.58	896.5	-31.3	410.5	382.7	27.83	14.752		
7,500.0	6,860.0	7,744.7	7,076.0	17.6	21.1	-121.58	896.5	68.7	410.5	380.5	29.99	13.687		
7,600.0	6,860.0	7,844.7	7,076.0	19.2	22.0	-121.58	896.5	168.7	410.5	378.0	32.57	12.606		
7,700.0	6,860.0	7,944.7	7,076.0	20.9	23.3	-121.58	896.5	268.7	410.5	375.1	35.46	11.578		
7,800.0	6,860.0	8,044.7	7,076.0	22.8	24.9	-121.58	896.5	368.7	410.5	371.9	38.59	10.638		
7,900.0	6,860.0	8,144.7	7,076.0	24.8	26.6	-121.58	896.5	468.7	410.5	368.6	41.92	9.793		
8,000.0	6,860.0	8,244.7	7,076.0	26.8	28.5	-121.58	896.5	568.7	410.5	365.1	45.40	9.043		
8,100.0	6,860.0	8,344.7	7,076.0	28.9	30.5	-121.58	896.5	668.7	410.5	361.5	48.99	8.380		
8,200.0	6,860.0	8,444.7	7,076.0	31.0	32.5	-121.58	896.5	768.7	410.5	357.8	52.68	7.793		
8,300.0	6,860.0	8,544.7	7,076.0	33.2	34.6	-121.58	896.5	868.7	410.5	354.1	56.44	7.274		
8,400.0	6,860.0	8,644.7	7,076.0	35.5	36.8	-121.58	896.5	968.7	410.5	350.3	60.26	6.812		
8,500.0	6,860.0	8,744.7	7,076.0	37.7	39.0	-121.58	896.5	1,068.7	410.5	346.4	64.13	6.401		
8,600.0	6,860.0	8,844.7	7,076.0	40.0	41.2	-121.58	896.5	1,168.7	410.5	342.5	68.05	6.033		
8,700.0	6,860.0	8,944.7	7,076.0	42.3	43.4	-121.58	896.5	1,268.7	410.5	338.5	72.00	5.702		
8,800.0	6,860.0	9,044.7	7,076.0	44.6	45.7	-121.58	896.5	1,368.7	410.5	334.5	75.97	5.403		
8,900.0	6,860.0	9,144.7	7,076.0	46.9	48.0	-121.58	896.5	1,468.7	410.5	330.5	79.98	5.133		
9,000.0	6,860.0	9,244.7	7,076.0	49.3	50.3	-121.58	896.5	1,568.7	410.5	326.5	84.00	4.887		
9,100.0	6,860.0	9,344.7	7,076.0	51.6	52.6	-121.58	896.5	1,668.7	410.5	322.5	88.05	4.663		
9,200.0	6,860.0	9,444.7	7,076.0	54.0	54.9	-121.58	896.5	1,768.7	410.5	318.4	92.10	4.457		
9,300.0	6,860.0	9,544.7	7,076.0	56.4	57.3	-121.58	896.5	1,868.7	410.5	314.3	96.18	4.268		
9,400.0	6,860.0	9,644.7	7,076.0	58.8	59.6	-121.58	896.5	1,968.7	410.5	310.3	100.26	4.094		
9,500.0	6,860.0	9,744.7	7,076.0	61.2	62.0	-121.58	896.5	2,068.7	410.5	306.2	104.36	3.934		
9,600.0	6,860.0	9,844.7	7,076.0	63.6	64.4	-121.58	896.5	2,168.7	410.5	302.1	108.46	3.785		
9,700.0	6,860.0	9,944.7	7,076.0	66.0	66.7	-121.58	896.5	2,268.7	410.5	297.9	112.58	3.647		
9,800.0	6,860.0	10,044.7	7,076.0	68.4	69.1	-121.58	896.5	2,368.7	410.5	293.8	116.70	3.518		
9,900.0	6,860.0	10,144.7	7,076.0	70.8	71.5	-121.58	896.5	2,468.7	410.5	289.7	120.83	3.398		
10,000.0	6,860.0	10,244.7	7,076.0	73.2	73.9	-121.58	896.5	2,568.7	410.5	285.6	124.96	3.285		
10,100.0	6,860.0	10,344.7	7,076.0	75.6	76.3	-121.58	896.5	2,668.7	410.5	281.4	129.10	3.180		
10,200.0	6,860.0	10,444.7	7,076.0	78.0	78.7	-121.58	896.5	2,768.7	410.5	277.3	133.25	3.081		

CC - Min centre to center distance or convergent point, SF - min separation factor, ES - min ellipse separation

Cathedral Energy Services

Anticollision Report

Company:	EnCana Oil & Gas (USA) Inc	Local Co-ordinate Reference:	Well Bohrer 2C-19H-E368
Project:	DJ Wattenberg	TVD Reference:	WELL @ 5084.0ft (Original Well Elev)
Reference Site:	S19-T3N-R68W (Bohrer)	MD Reference:	WELL @ 5084.0ft (Original Well Elev)
Site Error:	0.0ft	North Reference:	True
Reference Well:	Bohrer 2C-19H-E368	Survey Calculation Method:	Minimum Curvature
Well Error:	0.0ft	Output errors are at	2.00 sigma
Reference Wellbore	Hz	Database:	USA EDM 5000 Multi Users DB
Reference Design:	Plan #1	Offset TVD Reference:	Offset Datum

Offset Design													S19-T3N-R68W (Bohrer) - Bohrer 2B-19H-E368 - Hz - Plan #1		Offset Site Error:		0.0 ft
Survey Program:													0-Geolink MWD		Offset Well Error:		0.0 ft
Reference		Offset		Semi Major Axis			Distance							Warning			
Measured Depth	Vertical Depth	Measured Depth	Vertical Depth	Reference	Offset	Highside Toolface	Offset Wellbore Centre		Between Centres	Between Ellipses	Total Uncertainty Axis	Separation Factor					
(ft)	(ft)	(ft)	(ft)	(ft)	(ft)	(°)	+N/-S (ft)	+E/-W (ft)		(ft)	(ft)						
10,300.0	6,860.0	10,544.7	7,076.0	80.5	81.1	-121.58	896.5	2,868.7	410.5	273.1	137.40	2.988					
10,400.0	6,860.0	10,644.7	7,076.0	82.9	83.5	-121.58	896.5	2,968.7	410.5	269.0	141.55	2.900					
10,500.0	6,860.0	10,744.7	7,076.0	85.3	86.0	-121.58	896.5	3,068.7	410.5	264.8	145.71	2.817					
10,600.0	6,860.0	10,844.7	7,076.0	87.8	88.4	-121.58	896.5	3,168.7	410.5	260.6	149.87	2.739					
10,700.0	6,860.0	10,944.7	7,076.0	90.2	90.8	-121.58	896.5	3,268.7	410.5	256.5	154.04	2.665					
10,800.0	6,860.0	11,044.7	7,076.0	92.6	93.2	-121.58	896.5	3,368.7	410.5	252.3	158.20	2.595					
10,900.0	6,860.0	11,144.7	7,076.0	95.1	95.6	-121.58	896.5	3,468.7	410.5	248.1	162.37	2.528					
11,000.0	6,860.0	11,244.7	7,076.0	97.5	98.1	-121.58	896.5	3,568.7	410.5	244.0	166.55	2.465					
11,100.0	6,860.0	11,344.7	7,076.0	100.0	100.5	-121.58	896.5	3,668.7	410.5	239.8	170.72	2.405					
11,200.0	6,860.0	11,444.7	7,076.0	102.4	102.9	-121.58	896.5	3,768.7	410.5	235.6	174.90	2.347					
11,300.0	6,860.0	11,544.7	7,076.0	104.8	105.4	-121.58	896.5	3,868.7	410.5	231.4	179.08	2.292					
11,400.0	6,860.0	11,644.7	7,076.0	107.3	107.8	-121.58	896.5	3,968.7	410.5	227.3	183.26	2.240					
11,480.7	6,860.0	11,725.4	7,076.0	109.3	109.8	-121.58	896.5	4,049.4	410.5	223.9	186.63	2.200 SF					

Cathedral Energy Services

Anticollision Report

Company:	EnCana Oil & Gas (USA) Inc	Local Co-ordinate Reference:	Well Bohrer 2C-19H-E368
Project:	DJ Wattenberg	TVD Reference:	WELL @ 5084.0ft (Original Well Elev)
Reference Site:	S19-T3N-R68W (Bohrer)	MD Reference:	WELL @ 5084.0ft (Original Well Elev)
Site Error:	0.0ft	North Reference:	True
Reference Well:	Bohrer 2C-19H-E368	Survey Calculation Method:	Minimum Curvature
Well Error:	0.0ft	Output errors are at	2.00 sigma
Reference Wellbore	Hz	Database:	USA EDM 5000 Multi Users DB
Reference Design:	Plan #1	Offset TVD Reference:	Offset Datum

Offset Design S19-T3N-R68W (Bohrer) - Bohrer 2D-19H-E368 - Hz - Plan #1													Offset Site Error:	0.0 ft
Survey Program: O-Geolink MWD													Offset Well Error:	0.0 ft
Reference		Offset		Semi Major Axis		Distance		Total		Separation		Warning		
Measured Depth (ft)	Vertical Depth (ft)	Measured Depth (ft)	Vertical Depth (ft)	Reference (ft)	Offset (ft)	Highside Toolface (°)	Offset Wellbore Centre +N/-S (ft)	+E/-W (ft)	Between Centres (ft)	Between Ellipses (ft)	Uncertainty Axis	Factor		
0.0	0.0	0.0	0.0	0.0	0.0	-180.00	-7.3	0.0	7.3	7.0	0.26	27.829		
100.0	100.0	100.0	100.0	0.1	0.1	-180.00	-7.3	0.0	7.3	6.7	0.61	11.927		
200.0	200.0	200.0	200.0	0.3	0.3	-180.00	-7.3	0.0	7.3	6.3	0.96	7.590		
300.0	300.0	300.0	300.0	0.5	0.5	-180.00	-7.3	0.0	7.3	6.0	1.31	5.566 CC, ES		
400.0	400.0	400.0	400.0	0.7	0.7	-180.00	-7.3	0.0	7.3	6.1	1.66	4.704		
500.0	500.0	500.0	500.0	0.8	0.8	-128.79	-7.3	0.0	7.8	6.1	1.66	4.704		
600.0	600.0	600.0	600.0	1.0	1.0	-136.36	-7.1	-0.8	9.2	7.2	2.01	4.595		
700.0	699.9	700.1	700.1	1.2	1.2	-139.80	-6.4	-3.4	11.2	8.9	2.36	4.749		
800.0	799.7	800.2	800.0	1.4	1.4	-140.51	-5.4	-7.6	13.7	11.0	2.73	5.021		
900.0	899.4	900.3	899.9	1.6	1.6	-139.65	-3.9	-13.6	16.6	13.5	3.10	5.350		
1,000.0	998.9	1,000.4	999.7	1.8	1.8	-137.96	-2.0	-21.2	20.0	16.5	3.50	5.706		
1,100.0	1,098.3	1,100.5	1,099.4	2.1	2.0	-135.90	0.3	-30.5	23.8	19.9	3.93	6.070		
1,200.0	1,197.4	1,200.6	1,198.8	2.3	2.2	-133.71	3.0	-41.5	28.2	23.8	4.39	6.425		
1,300.0	1,296.3	1,300.6	1,298.0	2.6	2.5	-131.62	6.2	-54.2	33.1	28.2	4.89	6.769		
1,400.0	1,395.0	1,400.4	1,396.9	2.9	2.7	-130.94	9.4	-67.3	38.7	33.3	5.40	7.175		
1,500.0	1,493.6	1,500.3	1,495.8	3.2	3.0	-130.59	12.7	-80.5	44.5	38.6	5.92	7.515		
1,600.0	1,592.3	1,600.1	1,594.7	3.5	3.3	-130.32	16.0	-93.6	50.3	43.8	6.45	7.790		
1,700.0	1,690.9	1,699.9	1,693.7	3.9	3.6	-130.10	19.2	-106.8	56.0	49.0	6.99	8.016		
1,800.0	1,789.6	1,799.8	1,792.6	4.2	3.9	-129.93	22.5	-119.9	61.8	54.3	7.53	8.205		
1,900.0	1,888.3	1,899.6	1,891.5	4.5	4.1	-129.78	25.8	-133.1	67.6	59.5	8.08	8.364		
2,000.0	1,986.9	1,999.4	1,990.4	4.8	4.4	-129.66	29.0	-146.2	73.3	64.7	8.63	8.500		
2,100.0	2,085.6	2,099.3	2,089.3	5.2	4.7	-129.55	32.3	-159.4	79.1	69.9	9.18	8.618		
2,200.0	2,184.2	2,199.1	2,188.2	5.5	5.0	-129.46	35.6	-172.5	84.9	75.1	9.73	8.720		
2,300.0	2,282.9	2,298.9	2,287.1	5.8	5.3	-129.39	38.8	-185.7	90.6	80.3	10.29	8.809		
2,400.0	2,381.5	2,398.8	2,386.0	6.1	5.6	-129.32	42.1	-198.8	96.4	85.5	10.84	8.888		
2,500.0	2,480.2	2,498.6	2,484.9	6.5	5.9	-129.25	45.4	-212.0	102.1	90.7	11.40	8.959		
2,600.0	2,578.8	2,598.4	2,583.8	6.8	6.1	-129.20	48.6	-225.1	107.9	95.9	11.96	9.022		
2,700.0	2,677.5	2,698.3	2,682.7	7.1	6.4	-129.15	51.9	-238.3	113.7	101.2	12.52	9.078		
2,800.0	2,776.2	2,798.1	2,781.7	7.5	6.7	-129.11	55.2	-251.5	119.4	106.4	13.08	9.129		
2,900.0	2,874.8	2,897.9	2,880.6	7.8	7.0	-129.06	58.5	-264.6	125.2	111.6	13.65	9.176		
3,000.0	2,973.5	2,997.8	2,979.5	8.1	7.3	-129.03	61.7	-277.8	131.0	116.8	14.21	9.218		
3,100.0	3,072.1	3,097.6	3,078.4	8.5	7.6	-128.99	65.0	-290.9	136.7	122.0	14.77	9.257		
3,200.0	3,170.8	3,197.5	3,177.3	8.8	7.9	-128.96	68.3	-304.1	142.5	127.2	15.34	9.292		
3,300.0	3,269.4	3,297.3	3,276.2	9.1	8.2	-128.93	71.5	-317.2	148.3	132.4	15.90	9.325		
3,400.0	3,368.1	3,397.1	3,375.1	9.5	8.5	-128.91	74.8	-330.4	154.0	137.6	16.46	9.355		
3,500.0	3,466.7	3,497.0	3,474.0	9.8	8.8	-128.88	78.1	-343.5	159.8	142.8	17.03	9.383		
3,600.0	3,565.4	3,596.8	3,572.9	10.1	9.1	-128.86	81.3	-356.7	165.6	148.0	17.60	9.409		
3,700.0	3,664.1	3,696.6	3,671.8	10.5	9.4	-128.84	84.6	-369.8	171.3	153.2	18.16	9.434		
3,800.0	3,762.7	3,796.5	3,770.8	10.8	9.7	-128.82	87.9	-383.0	177.1	158.4	18.73	9.456		
3,900.0	3,861.4	3,896.3	3,869.7	11.1	9.9	-128.80	91.1	-396.1	182.9	163.6	19.29	9.478		
4,000.0	3,960.0	3,996.1	3,968.6	11.5	10.2	-128.78	94.4	-409.3	188.6	168.8	19.86	9.498		
4,100.0	4,058.7	4,096.0	4,067.5	11.8	10.5	-128.77	97.7	-422.4	194.4	174.0	20.43	9.516		
4,200.0	4,157.3	4,195.8	4,166.4	12.1	10.8	-128.75	100.9	-435.6	200.2	179.2	20.99	9.534		
4,300.0	4,256.0	4,295.6	4,265.3	12.5	11.1	-128.74	104.2	-448.7	205.9	184.4	21.56	9.550		
4,400.0	4,354.6	4,395.5	4,364.2	12.8	11.4	-128.72	107.5	-461.9	211.7	189.6	22.13	9.566		
4,500.0	4,453.3	4,495.3	4,463.1	13.2	11.7	-128.71	110.7	-475.1	217.5	194.8	22.70	9.581		
4,600.0	4,552.0	4,595.1	4,562.0	13.5	12.0	-128.70	114.0	-488.2	223.2	200.0	23.26	9.595		
4,700.0	4,650.6	4,695.0	4,660.9	13.8	12.3	-128.68	117.3	-501.4	229.0	205.2	23.83	9.608		
4,800.0	4,749.3	4,794.8	4,759.8	14.2	12.6	-128.67	120.5	-514.5	234.8	210.4	24.40	9.621		
4,900.0	4,847.9	4,894.6	4,858.8	14.5	12.9	-128.66	123.8	-527.7	240.5	215.5	24.97	9.633		
5,000.0	4,946.6	4,994.5	4,957.7	14.8	13.2	-128.65	127.1	-540.8	246.3	220.7	25.54	9.644		
5,100.0	5,045.2	5,094.3	5,056.6	15.2	13.5	-128.64	130.3	-554.0	252.0	225.9	26.10	9.655		

CC - Min centre to center distance or convergent point, SF - min separation factor, ES - min ellipse separation

Cathedral Energy Services

Anticollision Report

Company:	EnCana Oil & Gas (USA) Inc	Local Co-ordinate Reference:	Well Bohrer 2C-19H-E368
Project:	DJ Wattenberg	TVD Reference:	WELL @ 5084.0ft (Original Well Elev)
Reference Site:	S19-T3N-R68W (Bohrer)	MD Reference:	WELL @ 5084.0ft (Original Well Elev)
Site Error:	0.0ft	North Reference:	True
Reference Well:	Bohrer 2C-19H-E368	Survey Calculation Method:	Minimum Curvature
Well Error:	0.0ft	Output errors are at	2.00 sigma
Reference Wellbore	Hz	Database:	USA EDM 5000 Multi Users DB
Reference Design:	Plan #1	Offset TVD Reference:	Offset Datum

Offset Design S19-T3N-R68W (Bohrer) - Bohrer 2D-19H-E368 - Hz - Plan #1													Offset Site Error: 0.0 ft	
Survey Program: 0-Geolink MWD													Offset Well Error: 0.0 ft	
Reference		Offset		Semi Major Axis			Distance						Warning	
Measured Depth (ft)	Vertical Depth (ft)	Measured Depth (ft)	Vertical Depth (ft)	Reference (ft)	Offset (ft)	Highside Toolface (°)	Offset Wellbore Centre +N/-S (ft)	+E/-W (ft)	Between Centres (ft)	Between Ellipses (ft)	Total Uncertainty Axis	Separation Factor		
5,200.0	5,143.9	5,194.1	5,155.5	15.5	13.8	-128.63	133.6	-567.1	257.8	231.1	26.67	9.666		
5,300.0	5,242.5	5,294.0	5,254.4	15.8	14.1	-128.62	136.9	-580.3	263.6	236.3	27.24	9.676		
5,400.0	5,341.2	5,393.8	5,353.3	16.2	14.4	-128.62	140.1	-593.4	269.3	241.5	27.81	9.685		
5,500.0	5,439.8	5,493.6	5,452.2	16.5	14.7	-128.61	143.4	-606.6	275.1	246.7	28.38	9.694		
5,600.0	5,538.5	5,593.5	5,551.1	16.8	14.9	-128.60	146.7	-619.7	280.9	251.9	28.95	9.703		
5,700.0	5,637.2	5,693.3	5,650.0	17.2	15.2	-128.59	149.9	-632.9	286.6	257.1	29.52	9.711		
5,800.0	5,735.8	5,793.1	5,748.9	17.5	15.5	-128.59	153.2	-646.0	292.4	262.3	30.08	9.719		
5,900.0	5,834.5	5,893.0	5,847.8	17.9	15.8	-128.58	156.5	-659.2	298.2	267.5	30.65	9.727		
6,000.0	5,933.1	5,992.8	5,946.8	18.2	16.1	-128.57	159.8	-672.3	303.9	272.7	31.22	9.735		
6,100.0	6,031.8	6,092.6	6,045.7	18.5	16.4	-128.57	163.0	-685.5	309.7	277.9	31.79	9.742		
6,200.0	6,130.4	6,192.5	6,144.6	18.9	16.7	-128.56	166.3	-698.6	315.5	283.1	32.36	9.749		
6,300.0	6,229.1	6,292.3	6,243.5	19.2	17.0	-135.63	169.6	-711.8	321.2	288.3	32.92	9.759		
6,400.0	6,328.6	6,391.4	6,341.6	19.3	17.3	139.82	172.8	-724.9	326.2	292.6	33.57	9.715		
6,500.0	6,426.8	6,487.1	6,436.5	19.3	17.6	111.70	175.9	-737.4	331.6	297.2	34.36	9.650		
6,600.0	6,520.9	6,585.4	6,534.5	19.0	17.7	108.67	179.2	-740.5	340.1	305.4	34.63	9.820		
6,700.0	6,607.9	6,690.6	6,638.4	18.6	17.6	110.08	182.6	-725.2	351.5	317.5	34.09	10.312		
6,800.0	6,685.3	6,804.2	6,745.4	18.1	17.2	112.73	186.1	-687.6	365.1	332.4	32.76	11.146		
6,900.0	6,750.6	6,927.5	6,850.6	17.5	16.5	115.60	189.6	-623.9	379.5	348.7	30.80	12.321		
7,000.0	6,802.0	7,061.2	6,946.5	17.0	15.6	118.22	192.8	-531.2	392.8	364.3	28.60	13.738		
7,100.0	6,837.7	7,205.0	7,022.7	16.5	14.8	120.26	195.3	-409.7	403.5	376.7	26.79	15.063		
7,200.0	6,856.8	7,356.6	7,067.7	16.2	14.5	121.46	196.8	-265.4	409.8	383.6	26.18	15.654		
7,300.0	6,860.0	7,491.2	7,076.0	16.0	15.1	121.70	197.1	-131.3	411.0	383.9	27.12	15.156		
7,400.0	6,860.0	7,591.2	7,076.0	16.4	16.0	121.70	197.1	-31.3	411.0	382.3	28.73	14.305		
7,500.0	6,860.0	7,691.2	7,076.0	17.6	17.3	121.70	197.1	68.7	411.0	380.2	30.84	13.329		
7,600.0	6,860.0	7,791.2	7,076.0	19.2	18.8	121.70	197.1	168.7	411.0	377.7	33.34	12.327		
7,700.0	6,860.0	7,891.2	7,076.0	20.9	20.5	121.70	197.1	268.7	411.0	374.9	36.17	11.365		
7,800.0	6,860.0	7,991.2	7,076.0	22.8	22.3	121.70	197.1	368.7	411.0	371.8	39.24	10.474		
7,900.0	6,860.0	8,091.2	7,076.0	24.8	24.3	121.70	197.1	468.7	411.0	368.5	42.52	9.668		
8,000.0	6,860.0	8,191.2	7,076.0	26.8	26.3	121.70	197.1	568.7	411.0	365.1	45.94	8.947		
8,100.0	6,860.0	8,291.2	7,076.0	28.9	28.4	121.70	197.1	668.7	411.0	361.6	49.49	8.306		
8,200.0	6,860.0	8,391.2	7,076.0	31.0	30.6	121.70	197.1	768.7	411.0	357.9	53.14	7.736		
8,300.0	6,860.0	8,491.2	7,076.0	33.2	32.8	121.70	197.1	868.7	411.0	354.2	56.86	7.229		
8,400.0	6,860.0	8,591.2	7,076.0	35.5	35.0	121.70	197.1	968.7	411.0	350.4	60.65	6.777		
8,500.0	6,860.0	8,691.2	7,076.0	37.7	37.3	121.70	197.1	1,068.7	411.0	346.6	64.49	6.374		
8,600.0	6,860.0	8,791.2	7,076.0	40.0	39.6	121.70	197.1	1,168.7	411.0	342.7	68.38	6.011		
8,700.0	6,860.0	8,891.2	7,076.0	42.3	41.9	121.70	197.1	1,268.7	411.0	338.7	72.30	5.685		
8,800.0	6,860.0	8,991.2	7,076.0	44.6	44.3	121.70	197.1	1,368.7	411.0	334.8	76.25	5.390		
8,900.0	6,860.0	9,091.2	7,076.0	46.9	46.6	121.70	197.1	1,468.7	411.0	330.8	80.23	5.123		
9,000.0	6,860.0	9,191.2	7,076.0	49.3	49.0	121.70	197.1	1,568.7	411.0	326.8	84.24	4.880		
9,100.0	6,860.0	9,291.2	7,076.0	51.6	51.3	121.70	197.1	1,668.7	411.0	322.8	88.26	4.657		
9,200.0	6,860.0	9,391.2	7,076.0	54.0	53.7	121.70	197.1	1,768.7	411.0	318.7	92.30	4.453		
9,300.0	6,860.0	9,491.2	7,076.0	56.4	56.1	121.70	197.1	1,868.7	411.0	314.7	96.36	4.266		
9,400.0	6,860.0	9,591.2	7,076.0	58.8	58.5	121.70	197.1	1,968.7	411.0	310.6	100.43	4.093		
9,500.0	6,860.0	9,691.2	7,076.0	61.2	60.9	121.70	197.1	2,068.7	411.0	306.5	104.51	3.933		
9,600.0	6,860.0	9,791.2	7,076.0	63.6	63.3	121.70	197.1	2,168.7	411.0	302.4	108.60	3.785		
9,700.0	6,860.0	9,891.2	7,076.0	66.0	65.7	121.70	197.1	2,268.7	411.0	298.3	112.70	3.647		
9,800.0	6,860.0	9,991.2	7,076.0	68.4	68.1	121.70	197.1	2,368.7	411.0	294.2	116.80	3.519		
9,900.0	6,860.0	10,091.2	7,076.0	70.8	70.5	121.70	197.1	2,468.7	411.0	290.1	120.92	3.399		
10,000.0	6,860.0	10,191.2	7,076.0	73.2	73.0	121.70	197.1	2,568.7	411.0	286.0	125.04	3.287		
10,100.0	6,860.0	10,291.2	7,076.0	75.6	75.4	121.70	197.1	2,668.7	411.0	281.9	129.17	3.182		
10,200.0	6,860.0	10,391.2	7,076.0	78.0	77.8	121.70	197.1	2,768.7	411.0	277.7	133.30	3.084		
10,300.0	6,860.0	10,491.2	7,076.0	80.5	80.3	121.70	197.1	2,868.7	411.0	273.6	137.44	2.991		

CC - Min centre to center distance or convergent point, SF - min separation factor, ES - min ellipse separation

Cathedral Energy Services

Anticollision Report

Company:	EnCana Oil & Gas (USA) Inc	Local Co-ordinate Reference:	Well Bohrer 2C-19H-E368
Project:	DJ Wattenberg	TVD Reference:	WELL @ 5084.0ft (Original Well Elev)
Reference Site:	S19-T3N-R68W (Bohrer)	MD Reference:	WELL @ 5084.0ft (Original Well Elev)
Site Error:	0.0ft	North Reference:	True
Reference Well:	Bohrer 2C-19H-E368	Survey Calculation Method:	Minimum Curvature
Well Error:	0.0ft	Output errors are at	2.00 sigma
Reference Wellbore	Hz	Database:	USA EDM 5000 Multi Users DB
Reference Design:	Plan #1	Offset TVD Reference:	Offset Datum

Offset Design													S19-T3N-R68W (Bohrer) - Bohrer 2D-19H-E368 - Hz - Plan #1		Offset Site Error:		0.0 ft
Survey Program:													0-Geolink MWD		Offset Well Error:		0.0 ft
Reference		Offset		Semi Major Axis			Distance							Warning			
Measured Depth	Vertical Depth	Measured Depth	Vertical Depth	Reference	Offset	Highside Toolface	Offset Wellbore Centre		Between Centres	Between Ellipses	Total Uncertainty Axis	Separation Factor					
(ft)	(ft)	(ft)	(ft)	(ft)	(ft)	(°)	+N/-S (ft)	+E/-W (ft)	(ft)	(ft)							
10,400.0	6,860.0	10,591.2	7,076.0	82.9	82.7	121.70	197.1	2,968.7	411.0	269.5	141.59	2.903					
10,500.0	6,860.0	10,691.2	7,076.0	85.3	85.1	121.70	197.1	3,068.7	411.0	265.3	145.73	2.821					
10,600.0	6,860.0	10,791.2	7,076.0	87.8	87.6	121.70	197.1	3,168.7	411.0	261.2	149.88	2.742					
10,700.0	6,860.0	10,891.2	7,076.0	90.2	90.0	121.70	197.1	3,268.7	411.0	257.0	154.04	2.668					
10,800.0	6,860.0	10,991.2	7,076.0	92.6	92.4	121.70	197.1	3,368.7	411.0	252.8	158.20	2.598					
10,900.0	6,860.0	11,091.2	7,076.0	95.1	94.9	121.70	197.1	3,468.7	411.0	248.7	162.36	2.532					
11,000.0	6,860.0	11,191.2	7,076.0	97.5	97.3	121.70	197.1	3,568.7	411.0	244.5	166.52	2.468					
11,100.0	6,860.0	11,291.2	7,076.0	100.0	99.8	121.70	197.1	3,668.7	411.0	240.4	170.69	2.408					
11,200.0	6,860.0	11,391.2	7,076.0	102.4	102.2	121.70	197.1	3,768.7	411.0	236.2	174.85	2.351					
11,300.0	6,860.0	11,491.2	7,076.0	104.8	104.7	121.70	197.1	3,868.7	411.0	232.0	179.03	2.296					
11,400.0	6,860.0	11,591.2	7,076.0	107.3	107.1	121.70	197.1	3,968.7	411.0	227.8	183.20	2.244					
11,447.3	6,860.0	11,638.6	7,076.0	108.4	108.3	121.70	197.1	4,016.0	411.0	225.9	185.17	2.220					
11,480.7	6,860.0	11,669.1	7,076.0	109.3	109.0	121.70	197.1	4,046.6	411.1	224.5	186.51	2.204 SF					

Cathedral Energy Services

Anticollision Report

Company:	EnCana Oil & Gas (USA) Inc	Local Co-ordinate Reference:	Well Bohrer 2C-19H-E368
Project:	DJ Wattenberg	TVD Reference:	WELL @ 5084.0ft (Original Well Elev)
Reference Site:	S19-T3N-R68W (Bohrer)	MD Reference:	WELL @ 5084.0ft (Original Well Elev)
Site Error:	0.0ft	North Reference:	True
Reference Well:	Bohrer 2C-19H-E368	Survey Calculation Method:	Minimum Curvature
Well Error:	0.0ft	Output errors are at	2.00 sigma
Reference Wellbore	Hz	Database:	USA EDM 5000 Multi Users DB
Reference Design:	Plan #1	Offset TVD Reference:	Offset Datum

Offset Design S19-T3N-R68W (Bohrer) - Bohrer 2E-19H-E368 - Hz - Plan #1													Offset Site Error:	0.0 ft
Survey Program: O-Geolink MWD													Offset Well Error:	0.0 ft
Reference		Offset		Semi Major Axis		Distance		Total		Separation		Warning		
Measured Depth (ft)	Vertical Depth (ft)	Measured Depth (ft)	Vertical Depth (ft)	Reference (ft)	Offset (ft)	Highside Toolface (°)	Offset Wellbore Centre +N/-S (ft)	+E/-W (ft)	Between Centres (ft)	Between Ellipses (ft)	Uncertainty Axis	Factor		
0.0	0.0	0.0	0.0	0.0	0.0	180.00	-18.2	0.0	18.2					
100.0	100.0	100.0	100.0	0.1	0.1	180.00	-18.2	0.0	18.2	18.0	0.26	69.573		
200.0	200.0	200.0	200.0	0.3	0.3	180.00	-18.2	0.0	18.2	17.6	0.61	29.817		
300.0	300.0	300.0	300.0	0.5	0.5	180.00	-18.2	0.0	18.2	17.3	0.96	18.975		
400.0	400.0	400.0	400.0	0.7	0.7	180.00	-18.2	0.0	18.2	16.9	1.31	13.915 CC, ES		
500.0	500.0	500.0	500.0	0.8	0.8	-125.67	-18.2	0.0	18.7	17.1	1.66	11.282		
600.0	600.0	600.0	600.0	1.0	1.0	-131.66	-18.2	0.0	20.3	18.3	2.01	10.128		
700.0	699.9	699.9	699.9	1.2	1.2	-137.50	-18.4	-0.9	23.4	21.0	2.36	9.900 SF		
800.0	799.7	799.9	799.8	1.4	1.4	-140.62	-18.8	-3.4	27.7	25.0	2.72	10.187		
900.0	899.4	899.8	899.6	1.6	1.5	-141.73	-19.5	-7.7	33.2	30.1	3.09	10.746		
1,000.0	998.9	999.7	999.3	1.8	1.7	-141.57	-20.4	-13.8	39.7	36.3	3.47	11.452		
1,100.0	1,098.3	1,099.5	1,098.9	2.1	1.9	-140.67	-21.7	-21.5	47.4	43.5	3.87	12.234		
1,200.0	1,197.4	1,199.2	1,198.1	2.3	2.1	-139.39	-23.2	-30.9	56.2	51.9	4.31	13.042		
1,300.0	1,296.3	1,298.8	1,297.1	2.6	2.4	-137.93	-25.0	-42.0	66.1	61.3	4.77	13.842		
1,400.0	1,395.0	1,398.3	1,395.7	2.9	2.6	-136.32	-27.1	-54.8	76.9	71.6	5.28	14.573		
1,500.0	1,493.6	1,497.7	1,494.1	3.2	2.9	-134.42	-29.3	-68.8	87.9	82.1	5.81	15.120		
1,600.0	1,592.3	1,597.1	1,592.5	3.5	3.2	-132.93	-31.6	-82.7	98.9	92.5	6.36	15.555		
1,700.0	1,690.9	1,696.4	1,690.8	3.9	3.5	-131.73	-33.9	-96.7	109.9	103.0	6.91	15.908		
1,800.0	1,789.6	1,795.8	1,789.2	4.2	3.7	-130.75	-36.1	-110.7	121.0	113.6	7.47	16.197		
1,900.0	1,888.3	1,895.1	1,887.5	4.5	4.0	-129.94	-38.4	-124.7	132.2	124.1	8.04	16.437		
2,000.0	1,986.9	1,994.5	1,985.9	4.8	4.3	-129.25	-40.6	-138.6	143.3	134.7	8.61	16.640		
2,100.0	2,085.6	2,093.9	2,084.2	5.2	4.6	-128.66	-42.9	-152.6	154.5	145.3	9.19	16.812		
2,200.0	2,184.2	2,193.2	2,182.6	5.5	4.9	-128.15	-45.2	-166.6	165.7	155.9	9.77	16.961		
2,300.0	2,282.9	2,292.6	2,280.9	5.8	5.2	-127.71	-47.4	-180.5	176.9	166.5	10.35	17.090		
2,400.0	2,381.5	2,392.0	2,379.2	6.1	5.5	-127.32	-49.7	-194.5	188.1	177.2	10.94	17.202		
2,500.0	2,480.2	2,491.3	2,477.6	6.5	5.8	-126.97	-51.9	-208.5	199.3	187.8	11.52	17.302		
2,600.0	2,578.8	2,590.7	2,575.9	6.8	6.1	-126.66	-54.2	-222.5	210.5	198.4	12.11	17.390		
2,700.0	2,677.5	2,690.0	2,674.3	7.1	6.4	-126.38	-56.5	-236.4	221.8	209.1	12.70	17.468		
2,800.0	2,776.2	2,789.4	2,772.6	7.5	6.7	-126.13	-58.7	-250.4	233.0	219.7	13.29	17.539		
2,900.0	2,874.8	2,888.8	2,871.0	7.8	7.0	-125.90	-61.0	-264.4	244.2	230.4	13.88	17.602		
3,000.0	2,973.5	2,988.1	2,969.3	8.1	7.3	-125.69	-63.2	-278.4	255.5	241.0	14.47	17.660		
3,100.0	3,072.1	3,087.5	3,067.7	8.5	7.6	-125.50	-65.5	-292.3	266.7	251.7	15.06	17.712		
3,200.0	3,170.8	3,186.9	3,166.0	8.8	7.9	-125.33	-67.8	-306.3	278.0	262.3	15.65	17.760		
3,300.0	3,269.4	3,286.2	3,264.4	9.1	8.2	-125.16	-70.0	-320.3	289.2	273.0	16.24	17.804		
3,400.0	3,368.1	3,385.6	3,362.7	9.5	8.5	-125.01	-72.3	-334.3	300.5	283.6	16.84	17.845		
3,500.0	3,466.7	3,484.9	3,461.1	9.8	8.8	-124.88	-74.5	-348.2	311.7	294.3	17.43	17.882		
3,600.0	3,565.4	3,584.3	3,559.4	10.1	9.1	-124.75	-76.8	-362.2	323.0	305.0	18.03	17.916		
3,700.0	3,664.1	3,683.7	3,657.8	10.5	9.4	-124.63	-79.1	-376.2	334.2	315.6	18.62	17.948		
3,800.0	3,762.7	3,783.0	3,756.1	10.8	9.7	-124.51	-81.3	-390.2	345.5	326.3	19.22	17.978		
3,900.0	3,861.4	3,882.4	3,854.5	11.1	10.0	-124.41	-83.6	-404.1	356.8	336.9	19.81	18.006		
4,000.0	3,960.0	3,981.8	3,952.8	11.5	10.3	-124.31	-85.8	-418.1	368.0	347.6	20.41	18.032		
4,100.0	4,058.7	4,081.1	4,051.2	11.8	10.6	-124.21	-88.1	-432.1	379.3	358.3	21.01	18.056		
4,200.0	4,157.3	4,180.5	4,149.5	12.1	10.9	-124.13	-90.4	-446.1	390.5	368.9	21.60	18.079		
4,300.0	4,256.0	4,279.8	4,247.9	12.5	11.2	-124.04	-92.6	-460.0	401.8	379.6	22.20	18.100		
4,400.0	4,354.6	4,379.2	4,346.2	12.8	11.5	-123.97	-94.9	-474.0	413.1	390.3	22.80	18.121		
4,500.0	4,453.3	4,478.6	4,444.6	13.2	11.8	-123.89	-97.1	-488.0	424.3	400.9	23.39	18.140		
4,600.0	4,552.0	4,577.9	4,542.9	13.5	12.1	-123.82	-99.4	-502.0	435.6	411.6	23.99	18.158		
4,700.0	4,650.6	4,677.3	4,641.3	13.8	12.4	-123.75	-101.7	-515.9	446.9	422.3	24.59	18.175		
4,800.0	4,749.3	4,776.6	4,739.6	14.2	12.7	-123.69	-103.9	-529.9	458.1	432.9	25.18	18.191		
4,900.0	4,847.9	4,876.0	4,838.0	14.5	13.0	-123.63	-106.2	-543.9	469.4	443.6	25.78	18.206		
5,000.0	4,946.6	4,975.4	4,936.3	14.8	13.3	-123.57	-108.4	-557.9	480.7	454.3	26.38	18.221		
5,100.0	5,045.2	5,074.7	5,034.7	15.2	13.6	-123.52	-110.7	-571.8	491.9	464.9	26.98	18.235		

CC - Min centre to center distance or convergent point, SF - min separation factor, ES - min ellipse separation

Cathedral Energy Services

Anticollision Report

Company:	EnCana Oil & Gas (USA) Inc	Local Co-ordinate Reference:	Well Bohrer 2C-19H-E368
Project:	DJ Wattenberg	TVD Reference:	WELL @ 5084.0ft (Original Well Elev)
Reference Site:	S19-T3N-R68W (Bohrer)	MD Reference:	WELL @ 5084.0ft (Original Well Elev)
Site Error:	0.0ft	North Reference:	True
Reference Well:	Bohrer 2C-19H-E368	Survey Calculation Method:	Minimum Curvature
Well Error:	0.0ft	Output errors are at	2.00 sigma
Reference Wellbore	Hz	Database:	USA EDM 5000 Multi Users DB
Reference Design:	Plan #1	Offset TVD Reference:	Offset Datum

Cathedral Energy Services

Anticollision Report

Company:	EnCana Oil & Gas (USA) Inc	Local Co-ordinate Reference:	Well Bohrer 2C-19H-E368
Project:	DJ Wattenberg	TVD Reference:	WELL @ 5084.0ft (Original Well Elev)
Reference Site:	S19-T3N-R68W (Bohrer)	MD Reference:	WELL @ 5084.0ft (Original Well Elev)
Site Error:	0.0ft	North Reference:	True
Reference Well:	Bohrer 2C-19H-E368	Survey Calculation Method:	Minimum Curvature
Well Error:	0.0ft	Output errors are at	2.00 sigma
Reference Wellbore	Hz	Database:	USA EDM 5000 Multi Users DB
Reference Design:	Plan #1	Offset TVD Reference:	Offset Datum

Offset Design S19-T3N-R68W (Bohrer) - Bohrer 2F-19H-E368 - Hz - Plan #1													Offset Site Error:	0.0 ft
Survey Program: 0-Geolink MWD													Offset Well Error:	0.0 ft
Reference		Offset		Semi Major Axis		Distance		Total		Separation		Warning		
Measured Depth (ft)	Vertical Depth (ft)	Measured Depth (ft)	Vertical Depth (ft)	Reference (ft)	Offset (ft)	Highside Toolface (°)	Offset Wellbore Centre +N/-S (ft)	+E/-W (ft)	Between Centres (ft)	Between Ellipses (ft)	Uncertainty Axis			
0.0	0.0	0.0	0.0	0.0	0.0	-180.00	-29.1	0.0	29.1					
100.0	100.0	100.0	100.0	0.1	0.1	-180.00	-29.1	0.0	29.1	28.9	0.26	111.317		
200.0	200.0	200.0	200.0	0.3	0.3	-180.00	-29.1	0.0	29.1	28.5	0.61	47.707		
300.0	300.0	300.0	300.0	0.5	0.5	-180.00	-29.1	0.0	29.1	28.2	0.96	30.359		
400.0	400.0	400.0	400.0	0.7	0.7	-180.00	-29.1	0.0	29.1	27.8	1.31	22.263 CC, ES		
500.0	500.0	500.0	500.0	0.8	0.8	-124.85	-29.1	0.0	29.6	28.0	1.66	17.868		
600.0	600.0	599.7	599.7	1.0	1.0	-127.33	-29.6	-0.8	31.6	29.6	2.01	15.712		
700.0	699.9	699.4	699.4	1.2	1.2	-129.11	-30.9	-3.0	35.4	33.0	2.37	14.951 SF		
800.0	799.7	799.0	798.8	1.4	1.4	-130.14	-33.0	-6.8	41.0	38.3	2.73	15.006		
900.0	899.4	898.4	898.1	1.6	1.6	-130.55	-36.0	-12.0	48.4	45.3	3.11	15.557		
1,000.0	998.9	997.6	997.0	1.8	1.8	-130.55	-39.8	-18.8	57.7	54.1	3.51	16.409		
1,100.0	1,098.3	1,096.6	1,095.5	2.1	2.0	-130.29	-44.5	-27.0	68.7	64.7	3.94	17.435		
1,200.0	1,197.4	1,195.3	1,193.6	2.3	2.2	-129.89	-50.0	-36.6	81.5	77.1	4.39	18.548		
1,300.0	1,296.3	1,293.6	1,291.1	2.6	2.5	-129.42	-56.3	-47.7	96.0	91.1	4.88	19.688		
1,400.0	1,395.0	1,391.6	1,388.1	2.9	2.7	-128.89	-63.5	-60.1	112.2	106.8	5.39	20.804		
1,500.0	1,493.6	1,490.3	1,485.5	3.2	3.0	-128.28	-71.0	-73.3	128.7	122.8	5.92	21.728		
1,600.0	1,592.3	1,588.9	1,582.9	3.5	3.3	-127.80	-78.5	-86.5	145.2	138.8	6.46	22.472		
1,700.0	1,690.9	1,687.5	1,680.4	3.9	3.6	-127.42	-86.0	-99.7	161.8	154.8	7.01	23.079		
1,800.0	1,789.6	1,786.1	1,777.8	4.2	3.9	-127.12	-93.5	-112.8	178.3	170.8	7.56	23.582		
1,900.0	1,888.3	1,884.7	1,875.3	4.5	4.2	-126.86	-101.1	-126.0	194.9	186.8	8.12	24.004		
2,000.0	1,986.9	1,983.3	1,972.7	4.8	4.5	-126.64	-108.6	-139.2	211.4	202.8	8.68	24.362		
2,100.0	2,085.6	2,082.0	2,070.2	5.2	4.8	-126.46	-116.1	-152.4	228.0	218.8	9.24	24.670		
2,200.0	2,184.2	2,180.6	2,167.6	5.5	5.1	-126.30	-123.6	-165.5	244.6	234.8	9.81	24.936		
2,300.0	2,282.9	2,279.2	2,265.0	5.8	5.4	-126.16	-131.1	-178.7	261.1	250.8	10.38	25.169		
2,400.0	2,381.5	2,377.8	2,362.5	6.1	5.7	-126.04	-138.7	-191.9	277.7	266.8	10.94	25.374		
2,500.0	2,480.2	2,476.4	2,459.9	6.5	6.1	-125.93	-146.2	-205.1	294.3	282.8	11.51	25.555		
2,600.0	2,578.8	2,575.0	2,557.4	6.8	6.4	-125.83	-153.7	-218.2	310.8	298.8	12.09	25.717		
2,700.0	2,677.5	2,673.7	2,654.8	7.1	6.7	-125.75	-161.2	-231.4	327.4	314.7	12.66	25.862		
2,800.0	2,776.2	2,772.3	2,752.2	7.5	7.0	-125.67	-168.7	-244.6	344.0	330.7	13.23	25.993		
2,900.0	2,874.8	2,870.9	2,849.7	7.8	7.3	-125.60	-176.2	-257.8	360.6	346.7	13.81	26.112		
3,000.0	2,973.5	2,969.5	2,947.1	8.1	7.6	-125.53	-183.8	-270.9	377.1	362.7	14.38	26.220		
3,100.0	3,072.1	3,068.1	3,044.6	8.5	7.9	-125.47	-191.3	-284.1	393.7	378.7	14.96	26.318		
3,200.0	3,170.8	3,166.7	3,142.0	8.8	8.2	-125.42	-198.8	-297.3	410.3	394.7	15.54	26.408		
3,300.0	3,269.4	3,265.4	3,239.5	9.1	8.6	-125.37	-206.3	-310.5	426.8	410.7	16.11	26.491		
3,400.0	3,368.1	3,364.0	3,336.9	9.5	8.9	-125.32	-213.8	-323.6	443.4	426.7	16.69	26.568		
3,500.0	3,466.7	3,462.6	3,434.3	9.8	9.2	-125.28	-221.4	-336.8	460.0	442.7	17.27	26.639		
3,600.0	3,565.4	3,561.2	3,531.8	10.1	9.5	-125.24	-228.9	-350.0	476.6	458.7	17.85	26.704		
3,700.0	3,664.1	3,659.8	3,629.2	10.5	9.8	-125.20	-236.4	-363.2	493.1	474.7	18.42	26.766		

Cathedral Energy Services

Anticollision Report

Company:	EnCana Oil & Gas (USA) Inc	Local Co-ordinate Reference:	Well Bohrer 2C-19H-E368
Project:	DJ Wattenberg	TVD Reference:	WELL @ 5084.0ft (Original Well Elev)
Reference Site:	S19-T3N-R68W (Bohrer)	MD Reference:	WELL @ 5084.0ft (Original Well Elev)
Site Error:	0.0ft	North Reference:	True
Reference Well:	Bohrer 2C-19H-E368	Survey Calculation Method:	Minimum Curvature
Well Error:	0.0ft	Output errors are at	2.00 sigma
Reference Wellbore	Hz	Database:	USA EDM 5000 Multi Users DB
Reference Design:	Plan #1	Offset TVD Reference:	Offset Datum

Offset Design S19-T3N-R68W (Bohrer) - Bohrer 2G-19H-E368 - Hz - Plan #1												Offset Site Error: 0.0 ft		
Survey Program: 0-Geolink MWD												Offset Well Error: 0.0 ft		
Reference		Offset		Semi Major Axis			Distance						Warning	
Measured Depth (ft)	Vertical Depth (ft)	Measured Depth (ft)	Vertical Depth (ft)	Reference (ft)	Offset (ft)	Highside Toolface (°)	Offset Wellbore Centre +N/-S (ft)	+E/-W (ft)	Between Centres (ft)	Between Ellipses (ft)	Total Uncertainty Axis	Separation Factor		
0.0	0.0	0.0	0.0	0.0	0.0	-180.00	-36.4	0.0	36.4					
100.0	100.0	100.0	100.0	0.1	0.1	-180.00	-36.4	0.0	36.4	36.2	0.26	139.146		
200.0	200.0	200.0	200.0	0.3	0.3	-180.00	-36.4	0.0	36.4	35.8	0.61	59.634		
300.0	300.0	300.0	300.0	0.5	0.5	-180.00	-36.4	0.0	36.4	35.5	0.96	37.949		
400.0	400.0	400.0	400.0	0.7	0.7	-180.00	-36.4	0.0	36.4	35.1	1.31	27.829	CC, ES	
500.0	500.0	499.5	499.5	0.8	0.8	-123.60	-37.0	-0.6	37.5	35.9	1.66	22.631		
600.0	600.0	599.0	599.0	1.0	1.0	-124.02	-38.9	-2.5	40.8	38.8	2.01	20.294		
700.0	699.9	698.3	698.2	1.2	1.2	-124.59	-41.9	-5.5	46.3	43.9	2.37	19.519	SF	
800.0	799.7	797.5	797.1	1.4	1.4	-125.18	-46.1	-9.8	53.9	51.1	2.74	19.668		
900.0	899.4	896.3	895.7	1.6	1.6	-125.72	-51.5	-15.3	63.7	60.6	3.13	20.381		
1,000.0	998.9	994.8	993.7	1.8	1.8	-126.17	-58.1	-22.0	75.7	72.2	3.53	21.441		
1,100.0	1,098.3	1,092.8	1,091.1	2.1	2.0	-126.54	-65.8	-29.8	89.8	85.9	3.96	22.702		
1,200.0	1,197.4	1,190.4	1,187.9	2.3	2.3	-126.82	-74.7	-38.7	106.1	101.7	4.41	24.069		
1,300.0	1,296.3	1,287.4	1,283.9	2.6	2.6	-127.03	-84.6	-48.8	124.5	119.6	4.89	25.474		
1,400.0	1,395.0	1,383.9	1,379.0	2.9	2.9	-127.18	-95.6	-60.0	144.8	139.4	5.39	26.861		
1,500.0	1,493.6	1,479.9	1,473.5	3.2	3.2	-126.94	-107.7	-72.2	166.3	160.4	5.92	28.105		
1,600.0	1,592.3	1,576.7	1,568.5	3.5	3.5	-126.46	-120.7	-85.5	188.6	182.2	6.46	29.213		
1,700.0	1,690.9	1,674.1	1,664.1	3.9	3.9	-126.05	-134.0	-98.9	211.0	204.0	7.00	30.123		
1,800.0	1,789.6	1,771.6	1,759.7	4.2	4.2	-125.72	-147.2	-112.3	233.4	225.8	7.56	30.881		
1,900.0	1,888.3	1,869.0	1,855.3	4.5	4.6	-125.45	-160.4	-125.6	255.8	247.7	8.12	31.519		
2,000.0	1,986.9	1,966.5	1,951.0	4.8	4.9	-125.22	-173.6	-139.0	278.2	269.5	8.68	32.063		
2,100.0	2,085.6	2,063.9	2,046.6	5.2	5.3	-125.03	-186.8	-152.4	300.6	291.4	9.24	32.531		
2,200.0	2,184.2	2,161.4	2,142.2	5.5	5.7	-124.86	-200.0	-165.8	323.0	313.2	9.81	32.938		
2,300.0	2,282.9	2,258.8	2,237.8	5.8	6.0	-124.72	-213.3	-179.2	345.4	335.1	10.38	33.295		
2,400.0	2,381.5	2,356.3	2,333.4	6.1	6.4	-124.59	-226.5	-192.6	367.9	356.9	10.95	33.610		
2,500.0	2,480.2	2,453.7	2,429.1	6.5	6.8	-124.48	-239.7	-206.0	390.3	378.8	11.52	33.889		
2,600.0	2,578.8	2,551.2	2,524.7	6.8	7.1	-124.38	-252.9	-219.4	412.7	400.6	12.09	34.139		
2,700.0	2,677.5	2,648.7	2,620.3	7.1	7.5	-124.29	-266.1	-232.8	435.1	422.5	12.66	34.364		
2,800.0	2,776.2	2,746.1	2,715.9	7.5	7.9	-124.21	-279.3	-246.2	457.5	444.3	13.24	34.567		
2,900.0	2,874.8	2,843.6	2,811.5	7.8	8.2	-124.13	-292.5	-259.6	480.0	466.2	13.81	34.751		

Cathedral Energy Services

Anticollision Report

Company:	EnCana Oil & Gas (USA) Inc	Local Co-ordinate Reference:	Well Bohrer 2C-19H-E368
Project:	DJ Wattenberg	TVD Reference:	WELL @ 5084.0ft (Original Well Elev)
Reference Site:	S19-T3N-R68W (Bohrer)	MD Reference:	WELL @ 5084.0ft (Original Well Elev)
Site Error:	0.0ft	North Reference:	True
Reference Well:	Bohrer 2C-19H-E368	Survey Calculation Method:	Minimum Curvature
Well Error:	0.0ft	Output errors are at	2.00 sigma
Reference Wellbore	Hz	Database:	USA EDM 5000 Multi Users DB
Reference Design:	Plan #1	Offset TVD Reference:	Offset Datum

Offset Design S19-T3N-R68W (Bohrer) - Bohrer 2H-19H-E368 - Hz - Plan #1												Offset Site Error: 0.0 ft		
Survey Program: 0-Geolink MWD												Offset Well Error: 0.0 ft		
Reference		Offset		Semi Major Axis			Distance							Warning
Measured Depth (ft)	Vertical Depth (ft)	Measured Depth (ft)	Vertical Depth (ft)	Reference (ft)	Offset (ft)	Highside Toolface (°)	Offset Wellbore Centre +N/-S (ft)	Centre +E/-W (ft)	Between Centres (ft)	Between Ellipses (ft)	Total Uncertainty Axis	Separation Factor		
0.0	0.0	0.0	0.0	0.0	0.0	-180.00	-47.4	0.0	47.4					
100.0	100.0	99.0	99.0	0.1	0.1	-180.00	-47.4	0.0	47.4	47.1	0.26	181.799		
200.0	200.0	199.0	199.0	0.3	0.3	-180.00	-47.4	0.0	47.4	46.7	0.61	77.747		
300.0	300.0	299.0	299.0	0.5	0.5	-180.00	-47.4	0.0	47.4	46.4	0.96	49.424	CC, ES	
400.0	400.0	398.3	398.3	0.7	0.7	-179.41	-48.0	-0.5	48.0	46.7	1.31	36.786		
500.0	500.0	497.6	497.6	0.8	0.8	-121.99	-50.1	-2.0	50.6	49.0	1.66	30.584		
600.0	600.0	596.7	596.6	1.0	1.0	-121.73	-53.6	-4.5	55.6	53.6	2.01	27.668		
700.0	699.9	695.6	695.3	1.2	1.2	-121.97	-58.4	-8.0	62.9	60.5	2.37	26.534		
800.0	799.7	794.2	793.6	1.4	1.4	-122.51	-64.6	-12.4	72.5	69.8	2.74	26.452	SF	
900.0	899.4	892.3	891.3	1.6	1.6	-123.21	-72.2	-17.9	84.5	81.4	3.13	27.016		
1,000.0	998.9	990.0	988.4	1.8	1.9	-123.95	-81.0	-24.2	98.8	95.3	3.53	27.982		
1,100.0	1,098.3	1,087.2	1,084.7	2.1	2.1	-124.66	-91.2	-31.5	115.5	111.5	3.96	29.191		
1,200.0	1,197.4	1,183.7	1,180.2	2.3	2.4	-125.31	-102.6	-39.7	134.4	130.0	4.40	30.537		
1,300.0	1,296.3	1,279.5	1,274.7	2.6	2.7	-125.87	-115.2	-48.8	155.7	150.8	4.87	31.947		
1,400.0	1,395.0	1,374.6	1,368.3	2.9	3.0	-126.40	-128.9	-58.7	179.1	173.7	5.37	33.365		
1,500.0	1,493.6	1,469.0	1,460.9	3.2	3.4	-126.61	-143.8	-69.4	203.8	197.9	5.88	34.674		
1,600.0	1,592.3	1,562.9	1,552.7	3.5	3.8	-126.51	-159.9	-81.0	229.7	223.3	6.40	35.891		
1,700.0	1,690.9	1,658.0	1,645.4	3.9	4.1	-126.25	-177.2	-93.4	256.7	249.7	6.94	37.005		
1,800.0	1,789.6	1,754.3	1,739.2	4.2	4.5	-126.01	-194.7	-106.0	283.7	276.2	7.48	37.931		
1,900.0	1,888.3	1,850.6	1,833.0	4.5	4.9	-125.82	-212.3	-118.7	310.7	302.7	8.03	38.713		
2,000.0	1,986.9	1,946.9	1,926.9	4.8	5.3	-125.66	-229.9	-131.3	337.7	329.1	8.58	39.380		
2,100.0	2,085.6	2,043.1	2,020.7	5.2	5.7	-125.52	-247.4	-144.0	364.7	355.6	9.13	39.955		
2,200.0	2,184.2	2,139.4	2,114.5	5.5	6.1	-125.40	-265.0	-156.6	391.8	382.1	9.68	40.455		
2,300.0	2,282.9	2,235.7	2,208.3	5.8	6.5	-125.30	-282.6	-169.3	418.8	408.6	10.24	40.893		
2,400.0	2,381.5	2,332.0	2,302.1	6.1	7.0	-125.21	-300.2	-181.9	445.8	435.0	10.80	41.280		
2,500.0	2,480.2	2,428.2	2,395.9	6.5	7.4	-125.12	-317.7	-194.5	472.9	461.5	11.36	41.625		
2,600.0	2,578.8	2,524.5	2,489.7	6.8	7.8	-125.05	-335.3	-207.2	499.9	488.0	11.92	41.932		

Cathedral Energy Services

Anticollision Report

Company:	EnCana Oil & Gas (USA) Inc	Local Co-ordinate Reference:	Well Bohrer 2C-19H-E368
Project:	DJ Wattenberg	TVD Reference:	WELL @ 5084.0ft (Original Well Elev)
Reference Site:	S19-T3N-R68W (Bohrer)	MD Reference:	WELL @ 5084.0ft (Original Well Elev)
Site Error:	0.0ft	North Reference:	True
Reference Well:	Bohrer 2C-19H-E368	Survey Calculation Method:	Minimum Curvature
Well Error:	0.0ft	Output errors are at	2.00 sigma
Reference Wellbore	Hz	Database:	USA EDM 5000 Multi Users DB
Reference Design:	Plan #1	Offset TVD Reference:	Offset Datum

Offset Design S19-T3N-R68W (Bohrer) - Bohrer 2I-19H-E368 - Hz - Plan #1													Offset Site Error:	0.0 ft
Survey Program: 0-Geolink MWD													Offset Well Error:	0.0 ft
Reference		Offset		Semi Major Axis		Distance		Total		Separation		Warning		
Measured Depth (ft)	Vertical Depth (ft)	Measured Depth (ft)	Vertical Depth (ft)	Reference (ft)	Offset (ft)	Highside Toolface (°)	Offset Wellbore Centre +N/-S (ft)	+E/-W (ft)	Between Centres (ft)	Between Ellipses (ft)	Uncertainty Axis	Factor		
0.0	0.0	0.0	0.0	0.0	0.0	-180.00	-58.3	0.0	58.3					
100.0	100.0	99.0	99.0	0.1	0.1	-180.00	-58.3	0.0	58.3	58.0	0.26	223.753		
200.0	200.0	199.0	199.0	0.3	0.3	-180.00	-58.3	0.0	58.3	57.7	0.61	95.688 CC, ES		
300.0	300.0	298.1	298.1	0.5	0.5	-179.61	-59.0	-0.4	59.0	58.1	0.96	61.691		
400.0	400.0	397.2	397.1	0.7	0.7	-178.47	-61.3	-1.6	61.3	60.0	1.31	46.958		
500.0	500.0	496.1	496.0	0.8	0.8	-120.80	-65.0	-3.7	65.6	63.9	1.66	39.629		
600.0	600.0	594.8	594.5	1.0	1.0	-120.42	-70.2	-6.6	72.3	70.3	2.01	36.007		
700.0	699.9	693.2	692.6	1.2	1.2	-120.60	-76.9	-10.2	81.5	79.1	2.37	34.393		
800.0	799.7	791.2	790.1	1.4	1.5	-121.17	-85.0	-14.7	93.1	90.4	2.74	33.962 SF		
900.0	899.4	888.7	887.0	1.6	1.7	-121.94	-94.5	-20.0	107.1	104.0	3.13	34.261		
1,000.0	998.9	985.6	983.1	1.8	2.0	-122.79	-105.4	-26.0	123.6	120.0	3.53	35.020		
1,100.0	1,098.3	1,081.8	1,078.3	2.1	2.3	-123.65	-117.6	-32.7	142.4	138.5	3.95	36.065		
1,200.0	1,197.4	1,177.3	1,172.5	2.3	2.6	-124.46	-131.1	-40.2	163.7	159.3	4.39	37.282		
1,300.0	1,296.3	1,271.9	1,265.7	2.6	2.9	-125.20	-145.8	-48.3	187.4	182.5	4.85	38.592		
1,400.0	1,395.0	1,365.7	1,357.7	2.9	3.2	-125.93	-161.8	-57.1	213.2	207.9	5.34	39.938		
1,500.0	1,493.6	1,458.8	1,448.7	3.2	3.6	-126.39	-178.9	-66.5	240.5	234.7	5.84	41.209		
1,600.0	1,592.3	1,551.1	1,538.6	3.5	4.0	-126.57	-197.1	-76.6	269.2	262.8	6.35	42.419		
1,700.0	1,690.9	1,642.8	1,627.6	3.9	4.4	-126.56	-216.5	-87.3	299.1	292.2	6.86	43.581		
1,800.0	1,789.6	1,733.6	1,715.3	4.2	4.8	-126.40	-236.9	-98.5	330.2	322.9	7.39	44.705		
1,900.0	1,888.3	1,823.6	1,802.0	4.5	5.3	-126.14	-258.4	-110.4	362.7	354.8	7.92	45.808		
2,000.0	1,986.9	1,916.7	1,891.3	4.8	5.8	-125.83	-281.4	-123.1	396.0	387.5	8.46	46.805		
2,100.0	2,085.6	2,010.9	1,981.6	5.2	6.2	-125.56	-304.8	-136.0	429.4	420.4	9.01	47.656		
2,200.0	2,184.2	2,105.2	2,072.0	5.5	6.7	-125.33	-328.2	-148.9	462.8	453.2	9.56	48.399		
2,300.0	2,282.9	2,199.4	2,162.4	5.8	7.2	-125.13	-351.5	-161.8	496.2	486.0	10.11	49.053		

Cathedral Energy Services

Anticollision Report

Company:	EnCana Oil & Gas (USA) Inc	Local Co-ordinate Reference:	Well Bohrer 2C-19H-E368
Project:	DJ Wattenberg	TVD Reference:	WELL @ 5084.0ft (Original Well Elev)
Reference Site:	S19-T3N-R68W (Bohrer)	MD Reference:	WELL @ 5084.0ft (Original Well Elev)
Site Error:	0.0ft	North Reference:	True
Reference Well:	Bohrer 2C-19H-E368	Survey Calculation Method:	Minimum Curvature
Well Error:	0.0ft	Output errors are at	2.00 sigma
Reference Wellbore	Hz	Database:	USA EDM 5000 Multi Users DB
Reference Design:	Plan #1	Offset TVD Reference:	Offset Datum

Offset Design S19-T3N-R68W (Bohrer) - BOHRER TRUST 21-19 (EXISTING) - ENCANA WELL - SURVEYS													Offset Site Error:	0.0 ft
Survey Program: 75-Geolink MWD													Offset Well Error:	0.0 ft
Reference		Offset		Semi Major Axis			Distance							Warning
Measured Depth	Vertical Depth	Measured Depth	Vertical Depth	Reference	Offset	Highside Toolface	Offset Wellbore Centre		Between Centres	Between Ellipses	Total Uncertainty Axis	Separation Factor		
(ft)	(ft)	(ft)	(ft)	(ft)	(ft)	(°)	+N/-S (ft)	+E/-W (ft)	(ft)	(ft)				
8,100.0	6,860.0	7,124.9	6,888.7	28.9	28.5	-97.51	665.9	1,143.6	489.8	435.2	54.60	8.971		
8,200.0	6,860.0	7,121.6	6,885.4	31.0	28.5	-95.95	665.9	1,143.7	393.6	336.7	56.92	6.915		
8,300.0	6,860.0	7,118.3	6,882.1	33.2	28.5	-94.37	665.9	1,143.8	299.9	240.6	59.26	5.061		
8,400.0	6,860.0	7,114.9	6,878.8	35.5	28.5	-92.76	665.9	1,143.9	211.9	150.3	61.60	3.440		
8,500.0	6,860.0	7,111.6	6,875.4	37.7	28.5	-91.15	665.9	1,144.0	140.9	77.0	63.93	2.204		
8,575.4	6,860.0	7,109.0	6,872.8	39.4	28.5	-89.92	665.8	1,144.1	119.1	53.4	65.67	1.813	CC, ES, SF	
8,600.0	6,860.0	7,108.2	6,872.0	40.0	28.5	-89.52	665.8	1,144.1	121.6	55.3	66.24	1.836		
8,700.0	6,860.0	7,104.8	6,868.6	42.3	28.5	-87.88	665.8	1,144.3	172.3	103.8	68.52	2.515		
8,800.0	6,860.0	7,101.3	6,865.1	44.6	28.5	-86.23	665.8	1,144.4	254.1	183.3	70.75	3.591		
8,900.0	6,860.0	7,097.9	6,861.7	46.9	28.5	-84.57	665.8	1,144.5	345.6	272.6	72.94	4.738		
9,000.0	6,860.0	7,094.4	6,858.2	49.3	28.5	-82.91	665.8	1,144.6	440.7	365.7	75.07	5.871		

Cathedral Energy Services

Anticollision Report

Company:	EnCana Oil & Gas (USA) Inc	Local Co-ordinate Reference:	Well Bohrer 2C-19H-E368
Project:	DJ Wattenberg	TVD Reference:	WELL @ 5084.0ft (Original Well Elev)
Reference Site:	S19-T3N-R68W (Bohrer)	MD Reference:	WELL @ 5084.0ft (Original Well Elev)
Site Error:	0.0ft	North Reference:	True
Reference Well:	Bohrer 2C-19H-E368	Survey Calculation Method:	Minimum Curvature
Well Error:	0.0ft	Output errors are at	2.00 sigma
Reference Wellbore	Hz	Database:	USA EDM 5000 Multi Users DB
Reference Design:	Plan #1	Offset TVD Reference:	Offset Datum

Reference Depths are relative to WELL @ 5084.0ft (Original Well Elev)
Offset Depths are relative to Offset Datum
Central Meridian is -105.500000 °

Coordinates are relative to: Bohrer 2C-19H-E368
Coordinate System is US State Plane 1983, Colorado Northern Zone
Grid Convergence at Surface is: 0.29°

