

R  
81  
W

R  
80  
W

T7N, R80W, 6th P.M.

EE3 LLC.

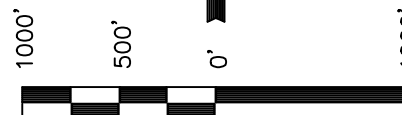
Well location, MUTUAL #04-30H (SURFACE LOCATION), located as shown in the SW 1/4 SE 1/4 of Section 30, T7N, R80W, 6th P.M., Jackson County, Colorado.

### BASIS OF ELEVATION

SPOT ELEVATION AT THE SOUTHEAST CORNER OF SECTION 29, T7N, R80W, 6th P.M., TAKEN FROM THE COALMONT QUADRANGLE, COLORADO, JACKSON COUNTY 7.5 MINUTE QUAD. (TOPOGRAPHIC MAP) PUBLISHED BY THE UNITED STATES DEPARTMENT OF THE INTERIOR, GEOLOGICAL SURVEY. SAID ELEVATION IS MARKED AS BEING 8156 FEET

### BASIS OF BEARINGS

BASIS OF BEARINGS IS A G.P.S. OBSERVATION.



SCALE

### CERTIFICATE

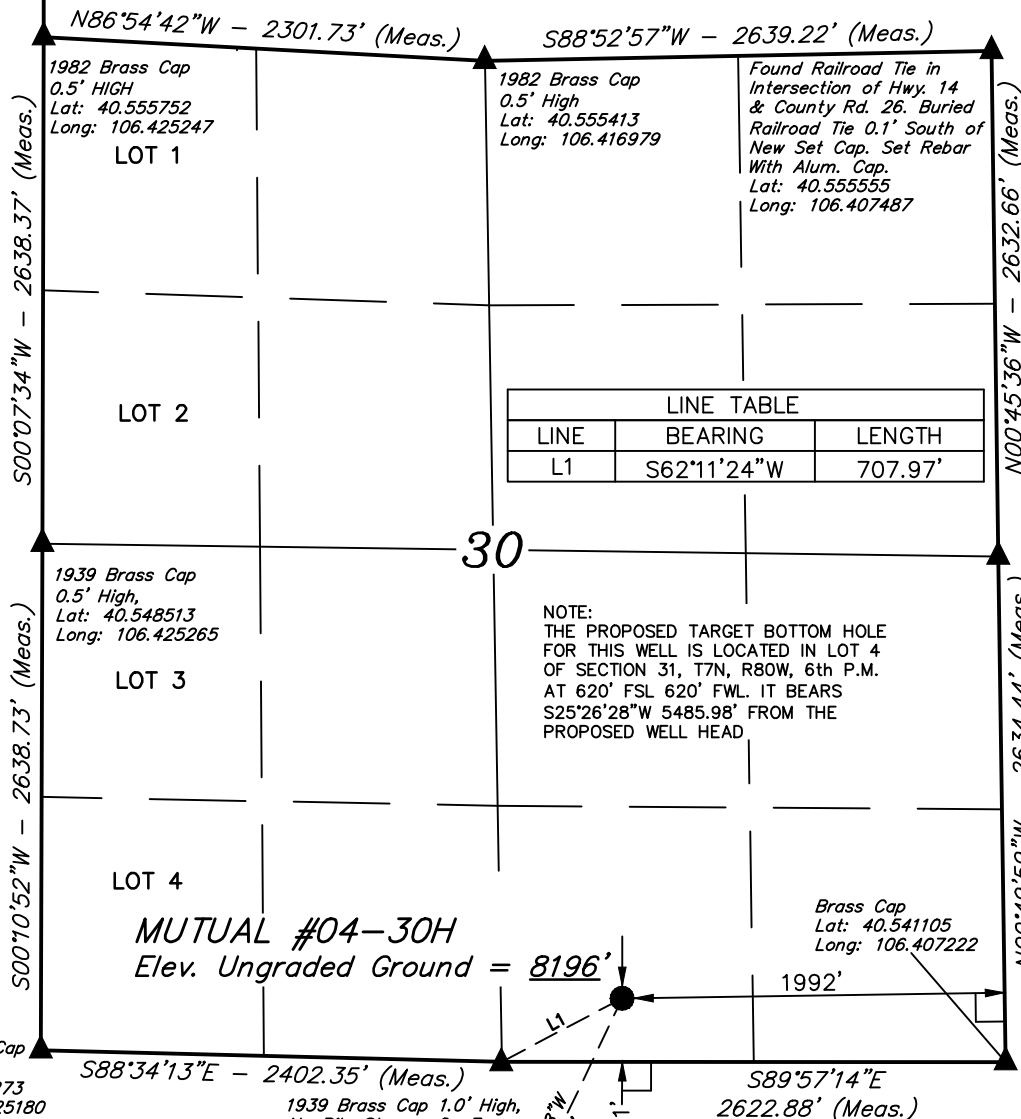
THIS IS TO CERTIFY THAT THE ABOVE PLAT WAS PREPARED FROM FIELD NOTES OF ACTUAL SURVEYS MADE BY ME OR UNDER MY SUPERVISION AND THAT THE SAME ARE TRUE AND CORRECT TO THE BEST OF MY KNOWLEDGE AND BELIEF.

REGISTERED LAND SURVEYOR  
REGISTRATION NO. 17492  
STATE OF COLORADO  
04-04-13

REV: 04-04-13 W.C.M.  
REV: 06-13-08 L.K.  
REV: 06-02-08 L.K.  
REV: 03-24-08 M.D.

**UINTAH ENGINEERING & LAND SURVEYING**  
85 SOUTH 200 EAST - VERNAL, UTAH 84078  
(435) 789-1017

SCALE 1" = 1000'	DATE SURVEYED: 12-20-07	DATE DRAWN: 03-19-08
PARTY A.F. B.A. L.K.	REFERENCES G.L.O. PLAT	
WEATHER COLD	FILE EE3 LLC.	



1939 Brass Cap  
0.5' High  
Lat: 40.541273  
Long: 106.425180

1939 Brass Cap 1.0' High,  
No Pile Stones, On Fence  
Running E/W/N  
Lat: 40.541110  
Long: 106.416655

Brass Cap  
Lat: 40.541105  
Long: 106.407222

NOTE:  
THE PROPOSED TARGET BOTTOM HOLE  
FOR THIS WELL IS LOCATED IN LOT 4  
OF SECTION 31, T7N, R80W, 6th P.M.  
AT 620' FSL 620' FWL. IT BEARS  
S25°26'28\"W 5485.98' FROM THE  
PROPOSED WELL HEAD

LINE TABLE		
LINE	BEARING	LENGTH
L1	S62°11'24\"W	707.97'

PDOP = 2.2

NAD 83 (SURFACE LOCATION)	
LATITUDE = 40°32'31.26\"	(40.542017)
LONGITUDE = 106°24'51.85\"	(106.414403)
NAD 27 (SURFACE LOCATION)	
LATITUDE = 40°32'31.33\"	(40.542036)
LONGITUDE = 106°24'49.74\"	(106.413817)
STATE PLANE NAD 83	
N: 1441607.78	E: 2745867.37
STATE PLANE NAD 27	
N: 441605.36	E: 1746023.57

### LEGEND:

- └─┘ = 90° SYMBOL
- = PROPOSED WELL HEAD.
- ▲ = SECTION CORNERS LOCATED.

Target  
Bottom  
Hole

T7N, R80W, 6th P.M.

EE3 LLC.

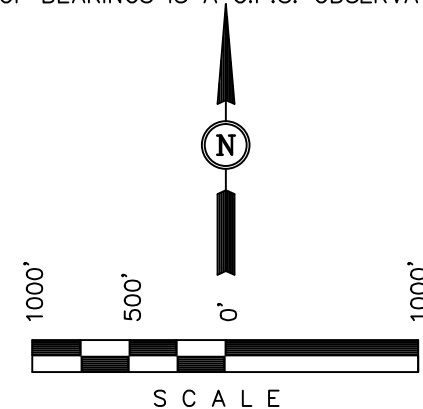
Well location, MUTUAL #04-30H (TARGET BOTTOM HOLE), located as shown in LOT 4 of Section 31, T7N, R80W, 6th P.M., Jackson County, Colorado.

### BASIS OF ELEVATION

SPOT ELEVATION AT THE SOUTHEAST CORNER OF SECTION 29, T7N, R80W, 6th P.M., TAKEN FROM THE COALMONT QUADRANGLE, COLORADO, JACKSON COUNTY 7.5 MINUTE QUAD. (TOPOGRAPHIC MAP) PUBLISHED BY THE UNITED STATES DEPARTMENT OF THE INTERIOR, GEOLOGICAL SURVEY. SAID ELEVATION IS MARKED AS BEING 8156 FEET

### BASIS OF BEARINGS

BASIS OF BEARINGS IS A G.P.S. OBSERVATION.



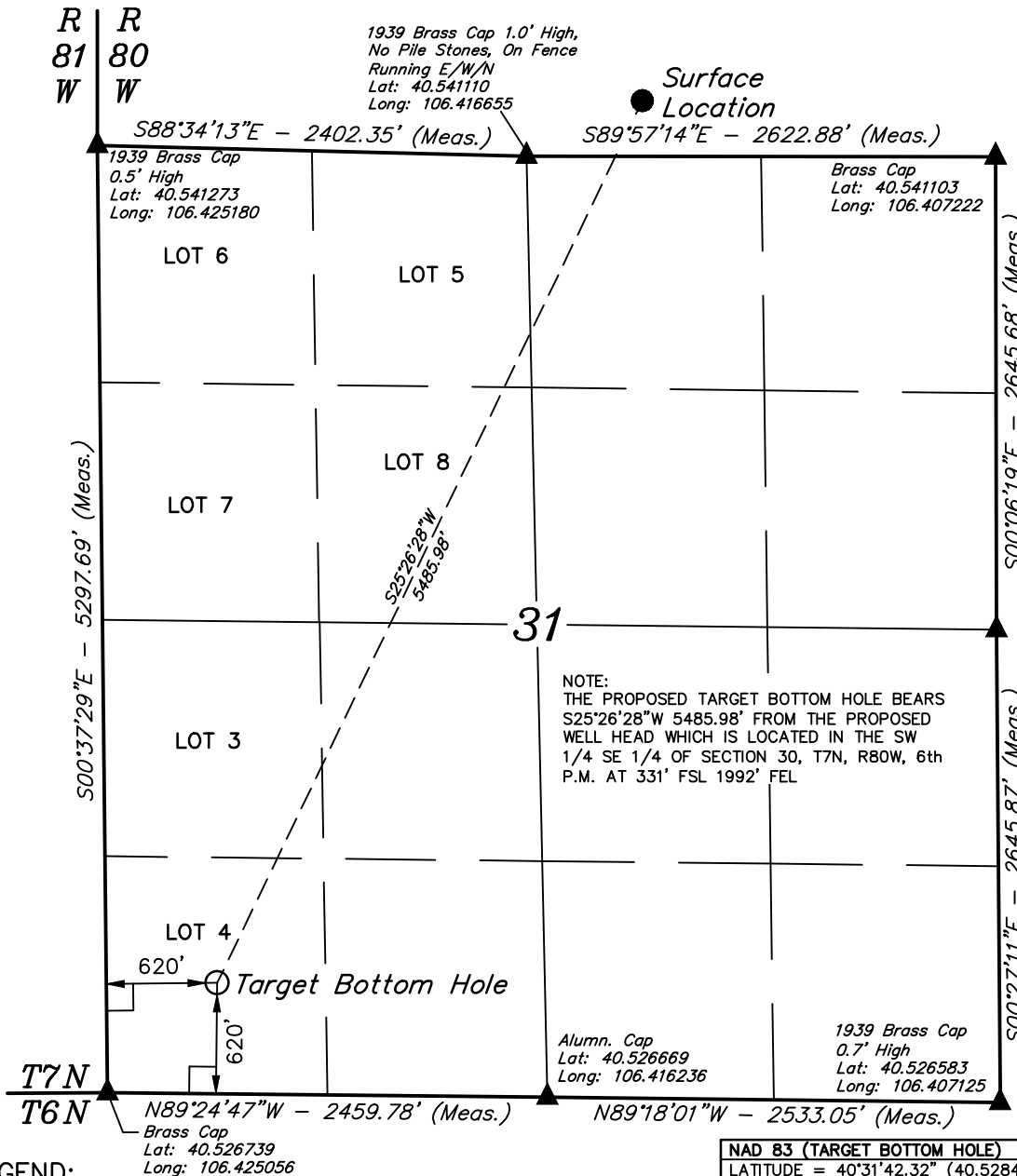
### CERTIFICATE

THIS IS TO CERTIFY THAT THE ABOVE PLAT WAS PREPARED FROM FIELD NOTES OF ACTUAL SURVEYS MADE BY ME OR UNDER MY SUPERVISION AND THAT THE SAME ARE TRUE AND CORRECT TO THE BEST OF MY KNOWLEDGE AND BELIEF.

REGISTERED LAND SURVEYOR  
REGISTRATION NO. 17492  
STATE OF COLORADO  
04-04-13

REV: 04-04-13 W.C.M.  
REV: 09-12-11 J.I.

**UINTAH ENGINEERING & LAND SURVEYING**  
85 SOUTH 200 EAST - VERNAL, UTAH 84078  
(435) 789-1017



NAD 83 (TARGET BOTTOM HOLE)
LATITUDE = 40°31'42.32" (40.528422)
LONGITUDE = 106°25'22.35" (106.422875)
NAD 27 (TARGET BOTTOM HOLE)
LATITUDE = 40°31'42.39" (40.528442)
LONGITUDE = 106°25'20.24" (106.422289)
STATE PLANE NAD 83
N: 1436679.87 E: 2743461.29
STATE PLANE NAD 27
N: 436677.51 E: 1743617.46

SCALE 1" = 1000'	DATE SURVEYED: 11-04-07	DATE DRAWN: 03-24-08
PARTY A.F. B.A. M.D.	REFERENCES G.L.O. PLAT	
WEATHER COOL	FILE EE3 LLC.	