



Scale: 9.60" / 100'
Measured Depth Log

Well Name Goodman Point #12(L1) (M-13)

Location Goodman Point, Colorado

State CO

County Montezuma

Country US

Rig Number Nabors 13

API Number 050830663404

Region Goodman Point

Field McELMO Dome

Spud Date April 5, 2013

Surface Coordinates 793 FNL & 250 FEL, Section 6
T36N, 617W, NMPM

Bottom Hole Coordinates 2209 FSL, 1662 FEL, 315AZ from SHL

Ground Elevation 6860

K.B. Elevation 6880

Logged Interval 7900 **To** 9118

Total Depth TVD 8084.48'

Formation LEADVILLE

Type of Drilling Fluid Fresh water

Operator

Company KINDER MORGAN

Geologist

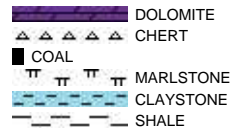
Name Steven Moran

Company Above Enterprise

Other

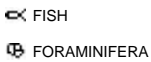
Yellow Box 530

Rock Types



Accessories

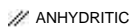
Fossils



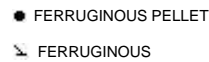
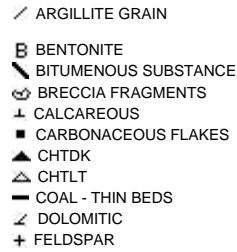
Fossil



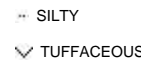
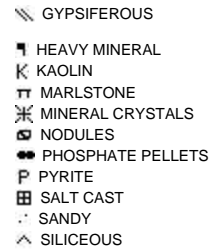
Minerals



Argillaceous



Glaucconite

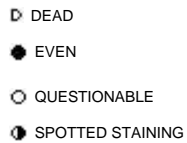


Stringer

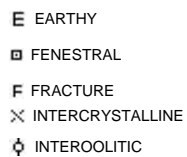


Other Symbols

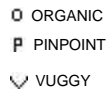
Oil Show



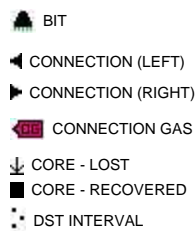
Porosity



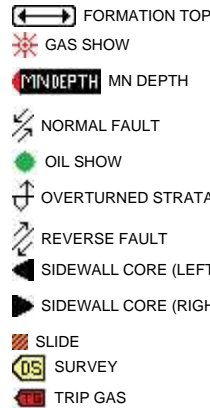
Moldic



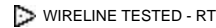
Engineering



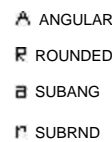
Fault



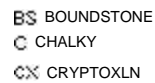
Wireline Tested - Left



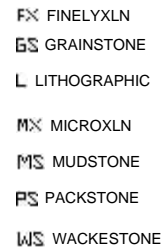
Rounding



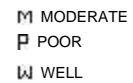
Textures

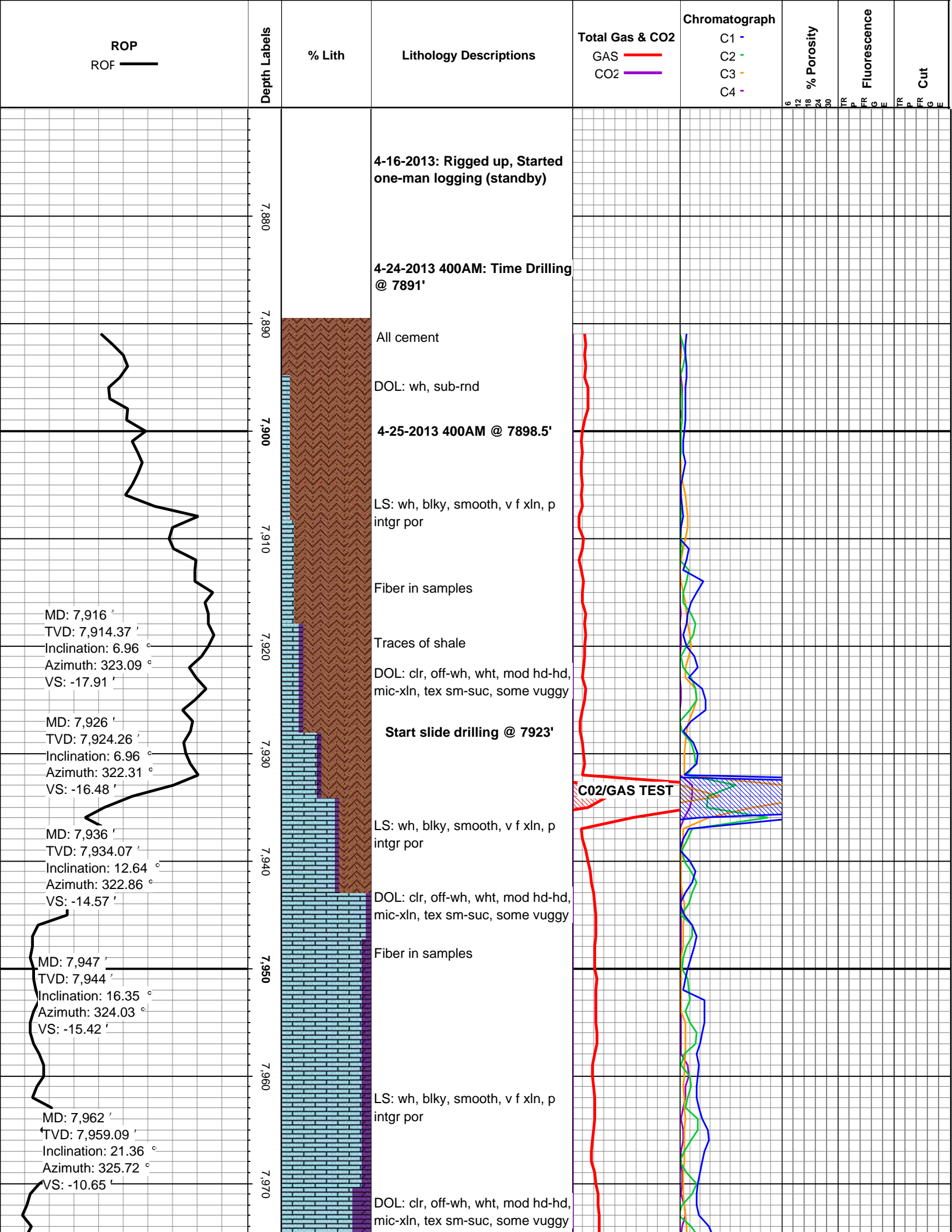


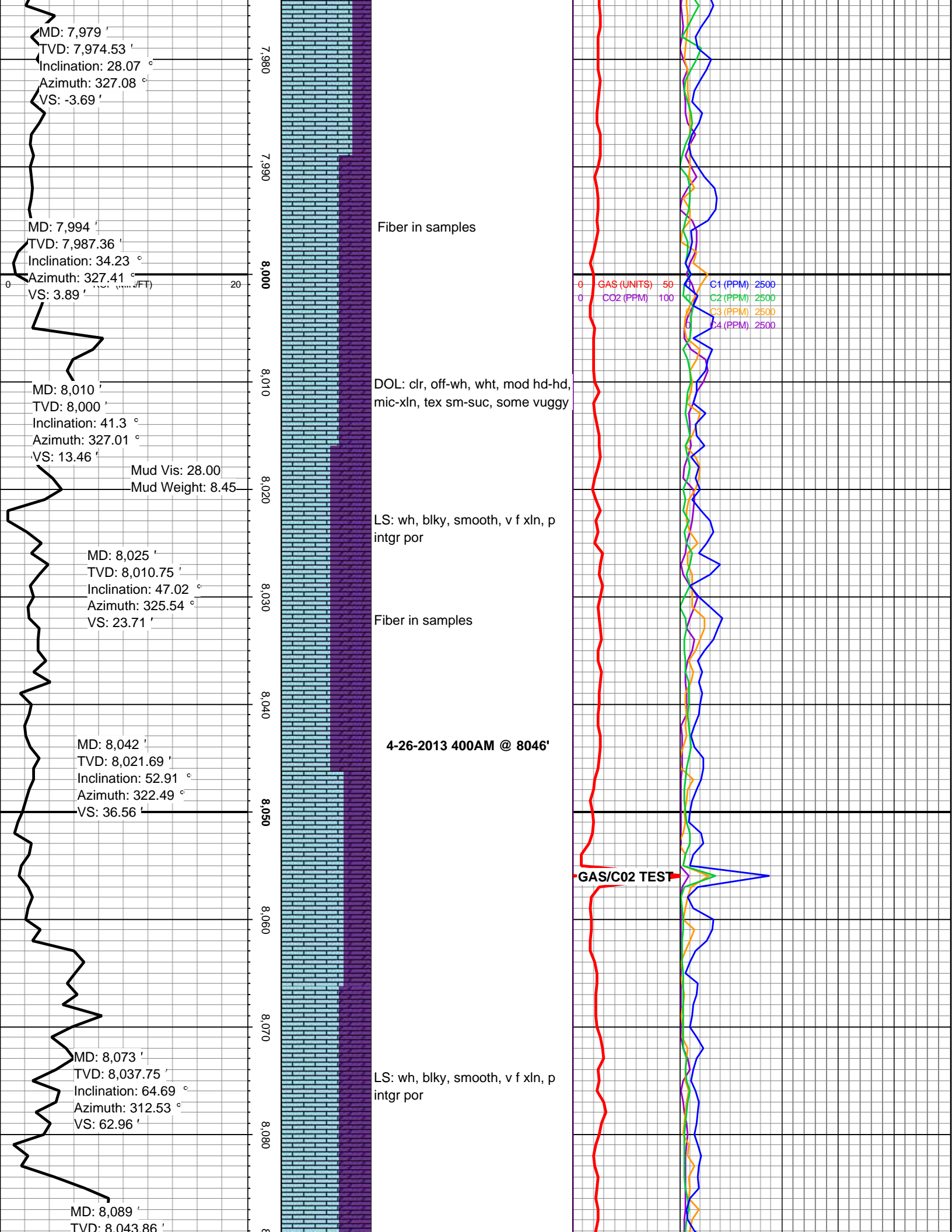
E Earthy

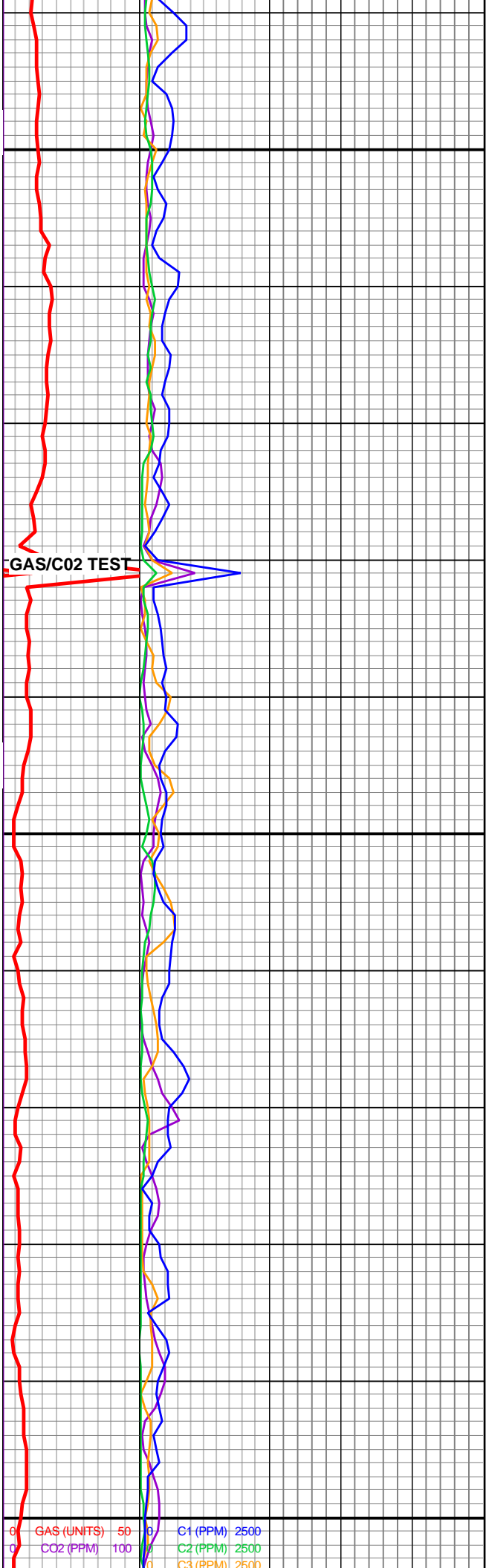
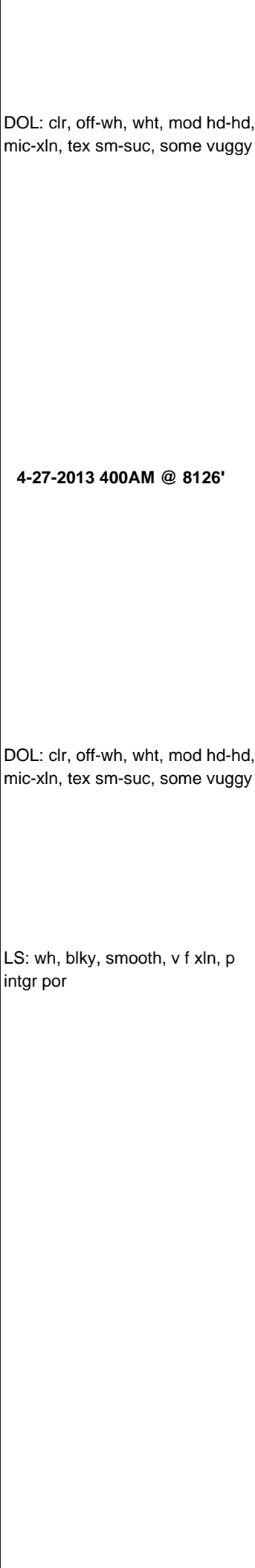
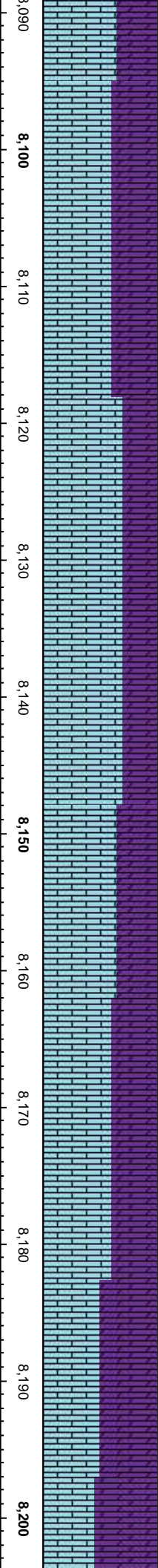
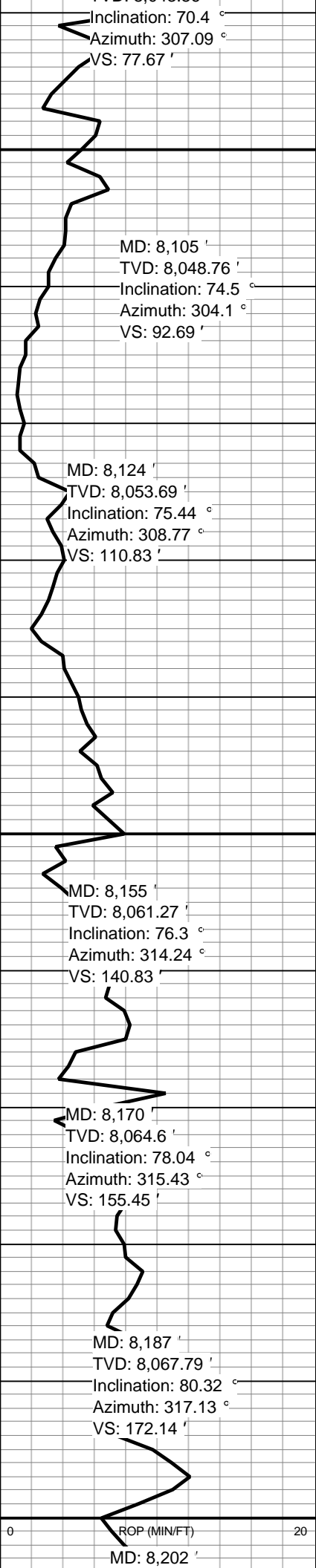


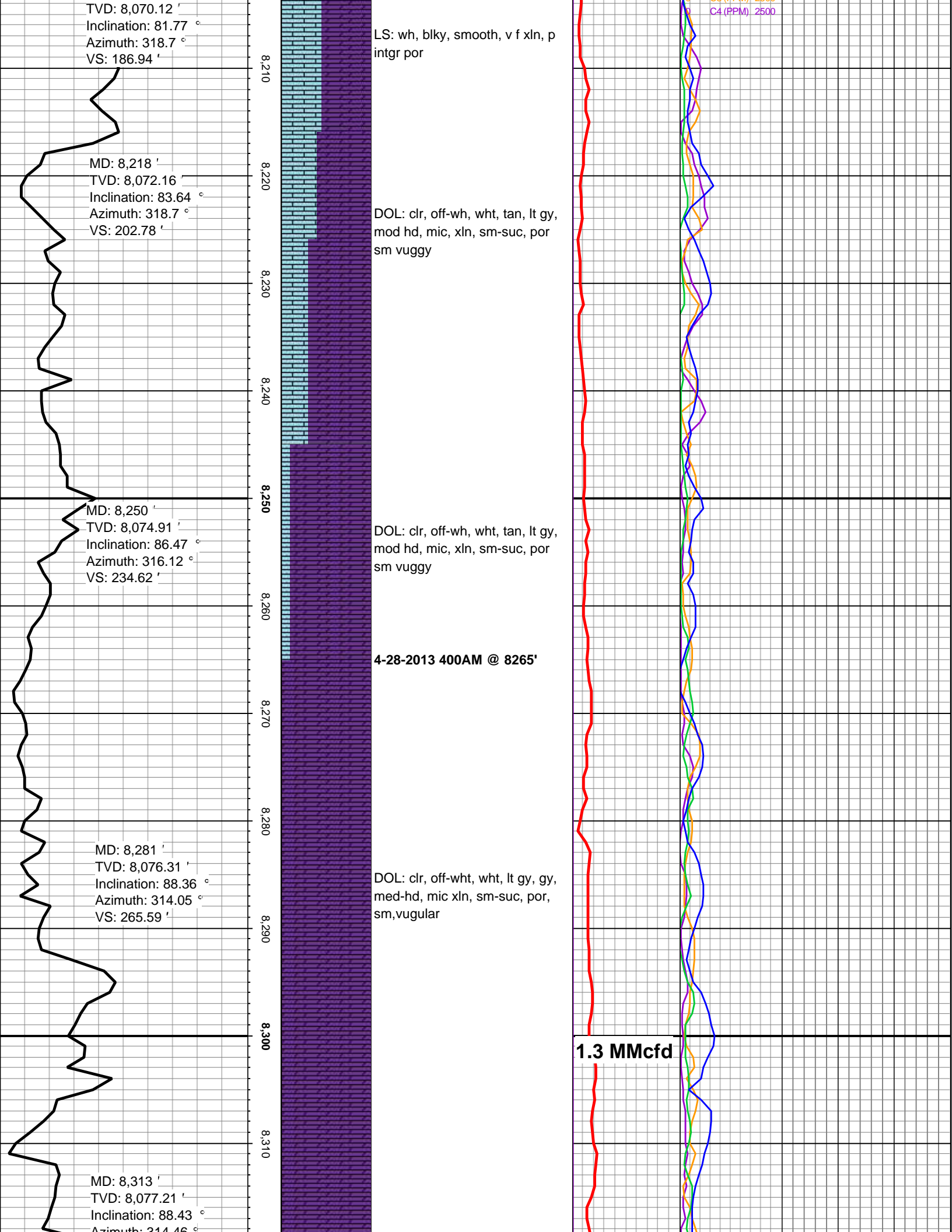
Sorting

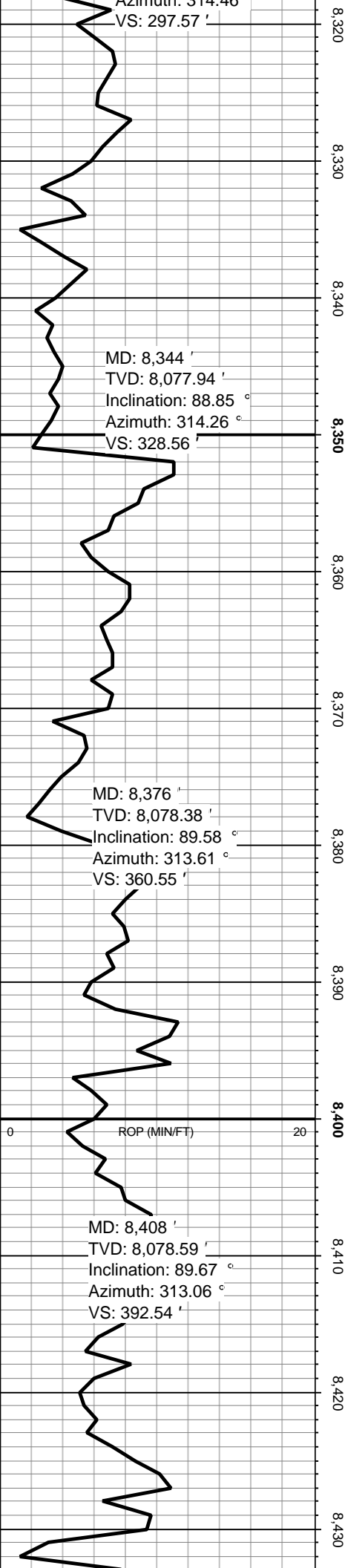






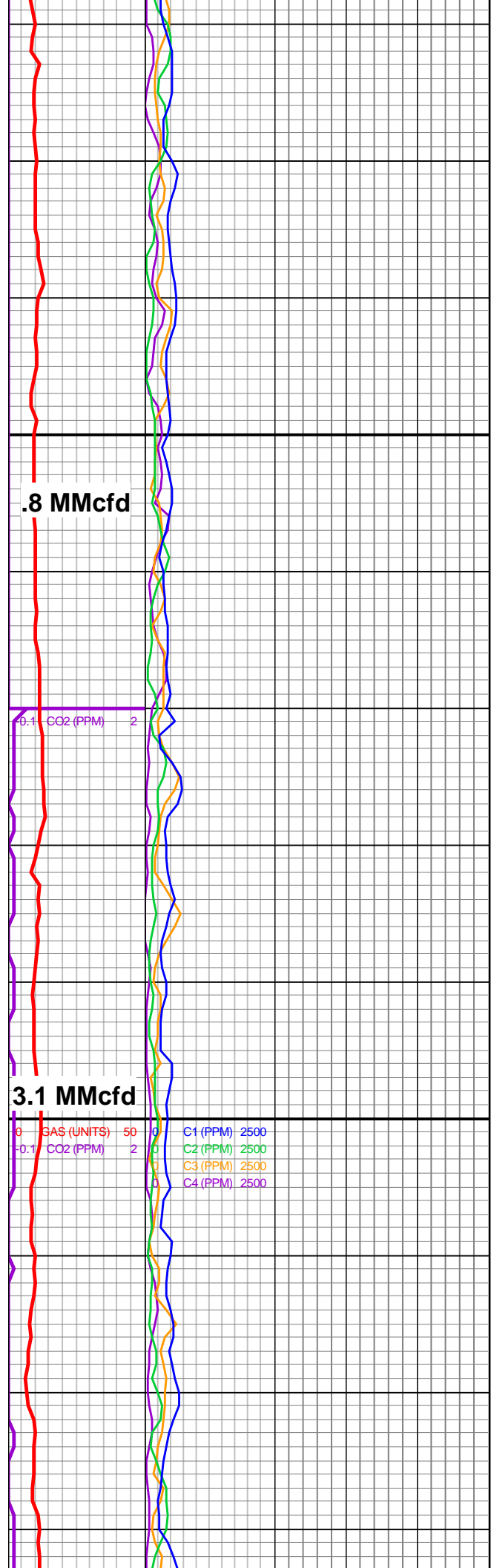


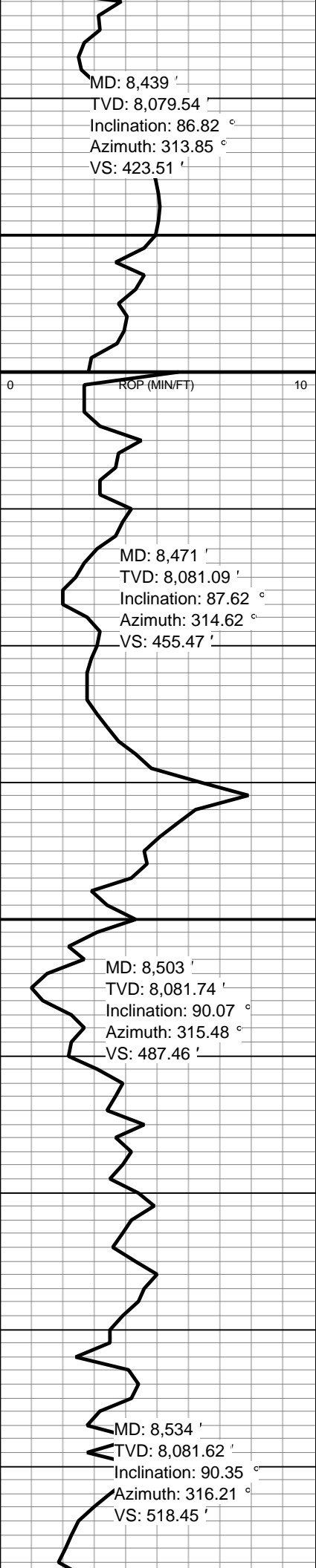




DOL: clr, off-wht, wht, lt gy, gy,
med-hd, mic xln, sm-suc, por,
sm,vugular

DOL: clr, off-wht, wht, lt gy, gy,
med-hd, mic xln, sm-suc, por,
sm,vugular



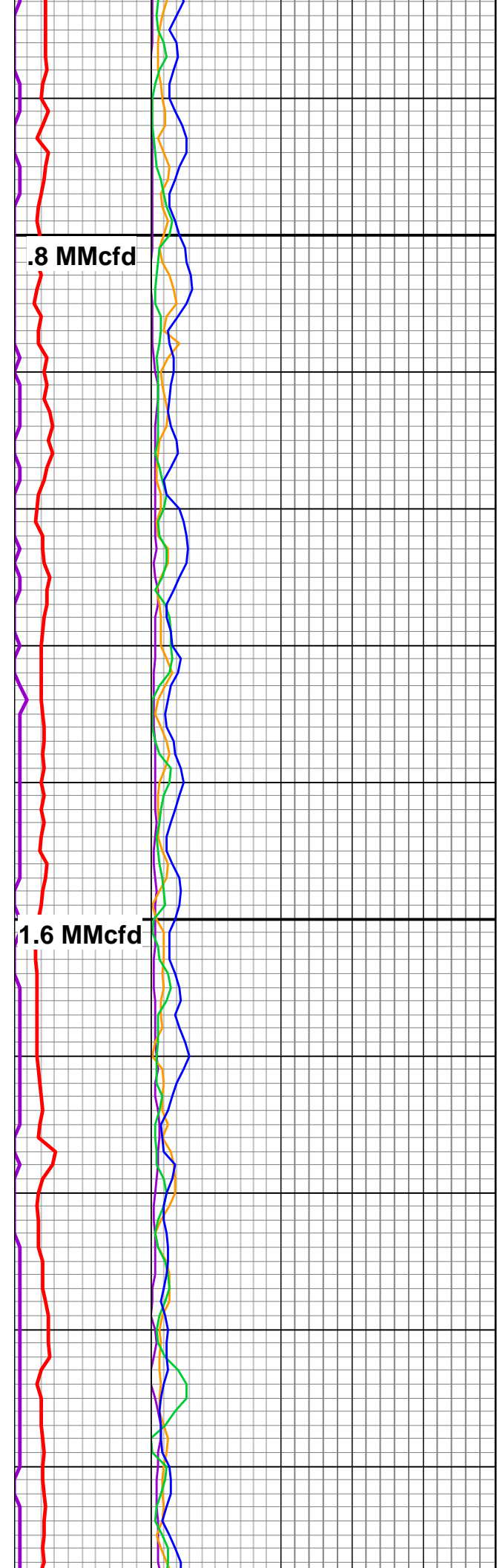


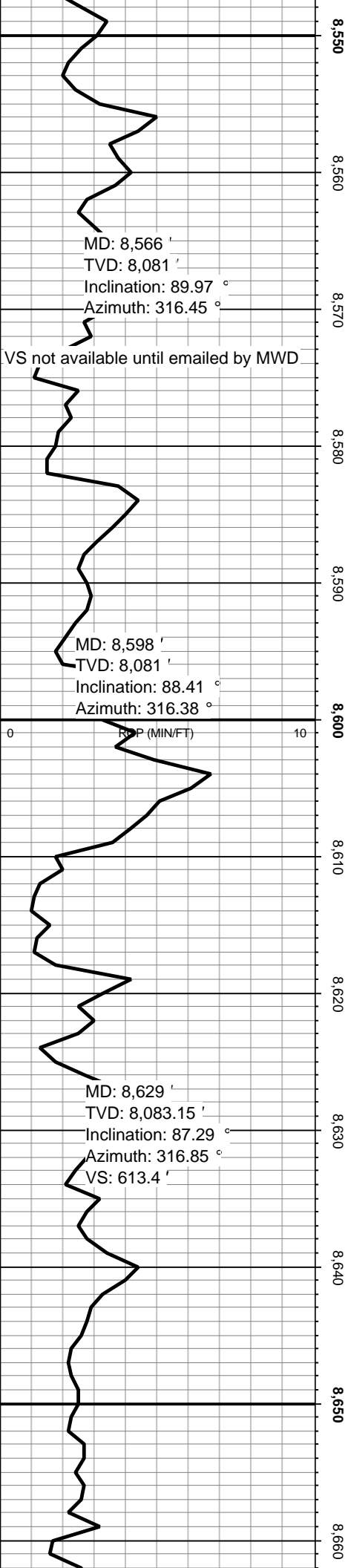
8,440
8,450
8,460
8,470
8,480
8,490
8,500
8,510
8,520
8,530
8,540

DOL: clr, off-wht, wht, lt gy, gy,
med-hd, mic xln, sm-suc, por,
sm,vugular

DOL: clr, off-wht, wht, lt gy, gy,
med-hd, mic xln, sm-suc, por,
sm,vugular

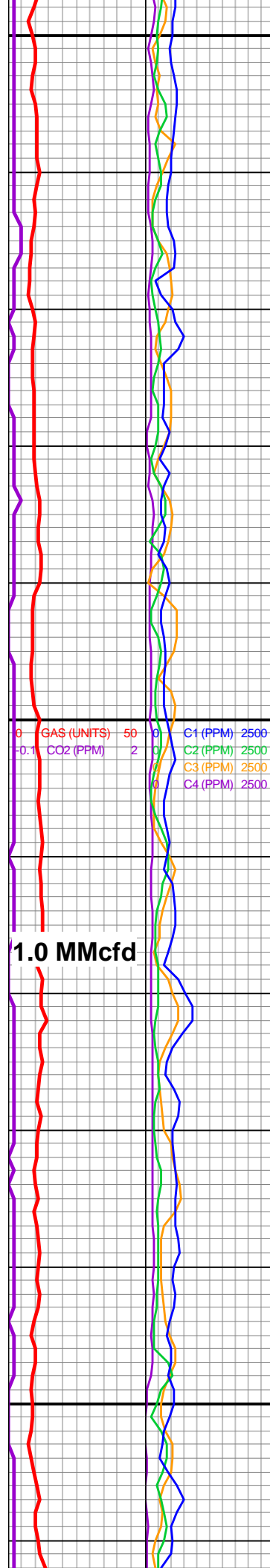
DOL: clr, off-wht, wht, lt gy, gy,
med-hd, mic xln, sm-suc, por,
sm,vugular

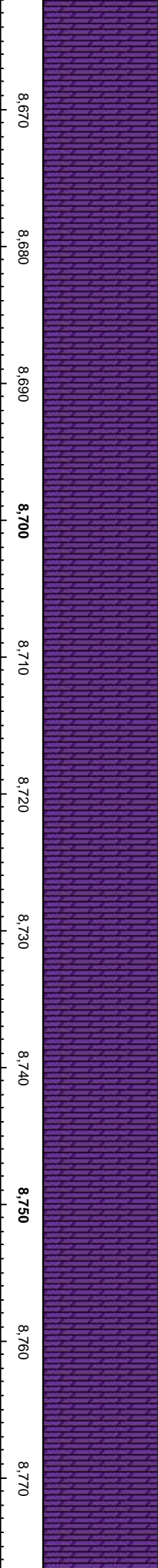
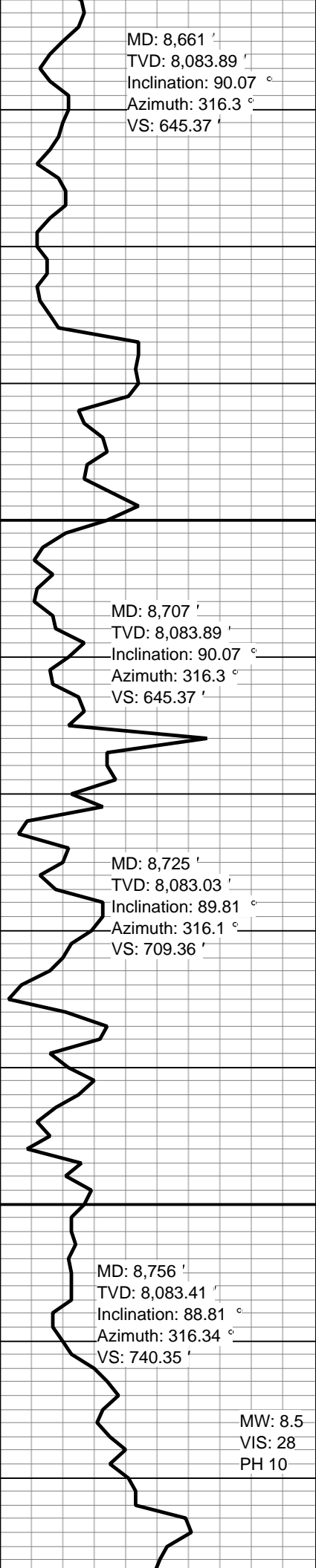




DOL: clr, off-wht, wht, lt gy, gy,
med-hd, mic xln, sm-suc, por,
sm,vugular

4-29-2013 400AM @ 8648'



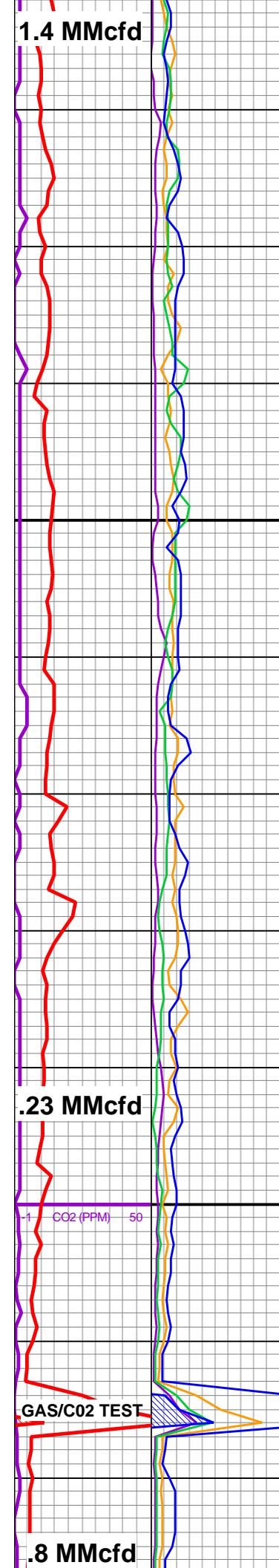


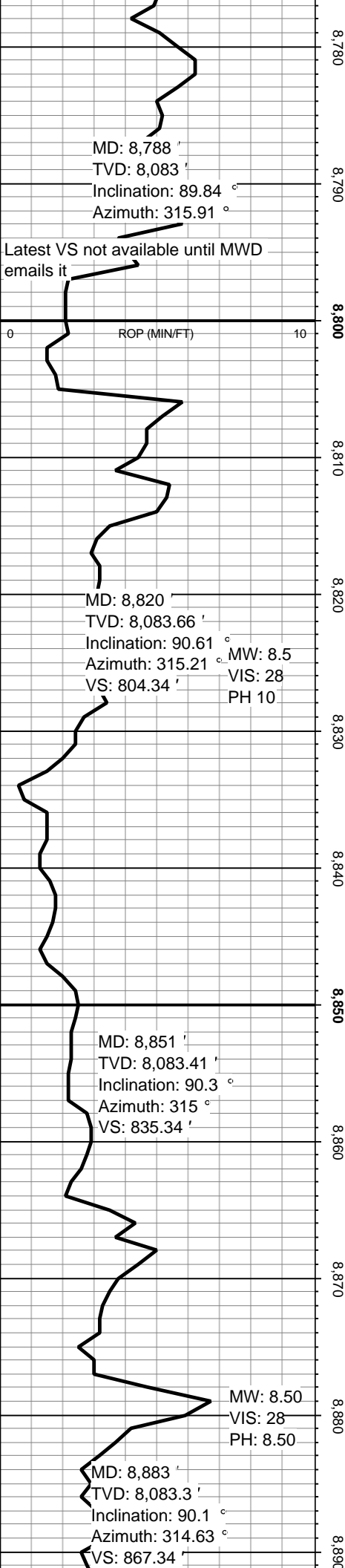
DOL: clr, off-wht, wht, lt gy, gy, med-hd, mic xln, sm-suc, por, sm,vugular

DOL: clr, off-wht, wht, lt gy, gy, med-hd, mic xln, sm-suc, por, sm,vugular

4-30-2013 400AM @ 8759'

DOL: 10% dark





DOL: 10% dark

DOL: clr, off-wht, wht, lt gy, gy, med-hd, mic xln, sm-suc, por, sm,vugular

DOL: 15% dark

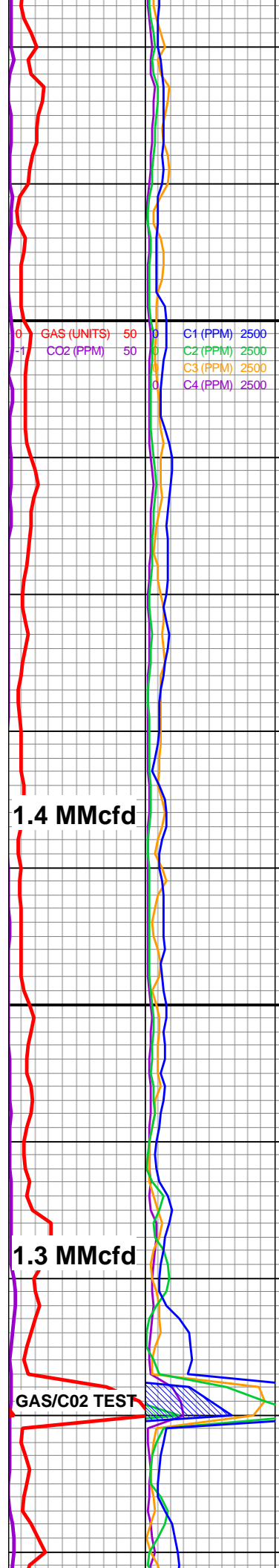
DOL: 15% dark

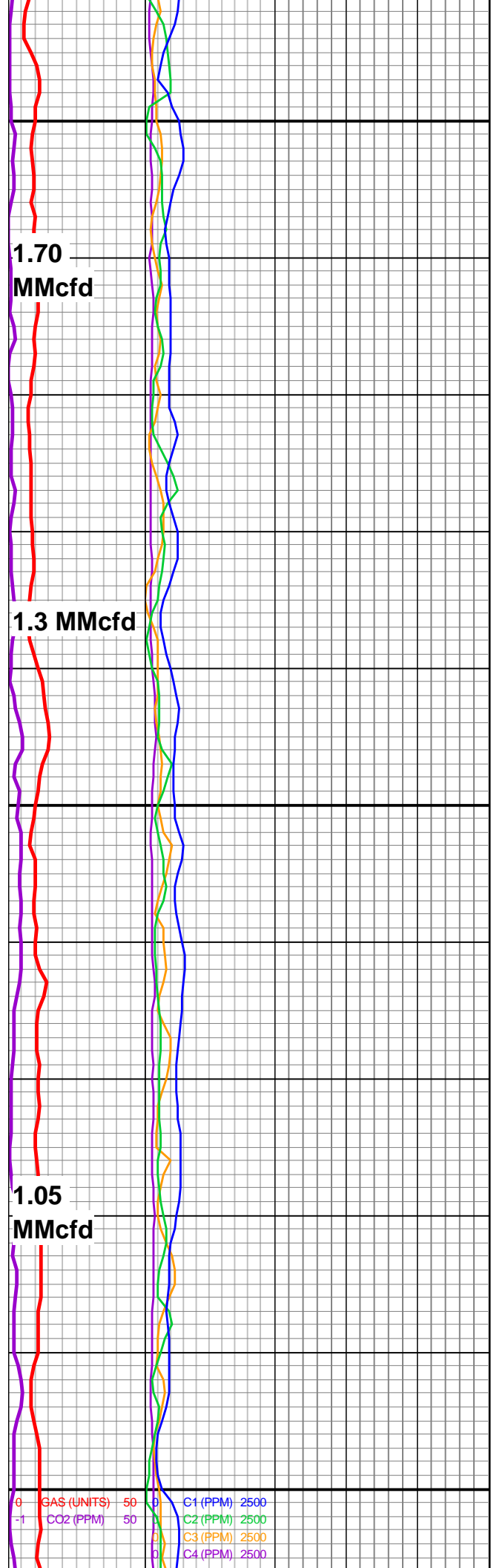
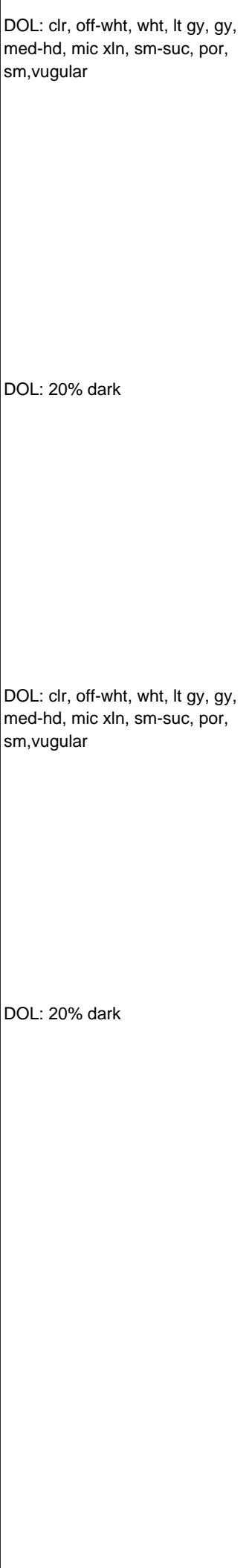
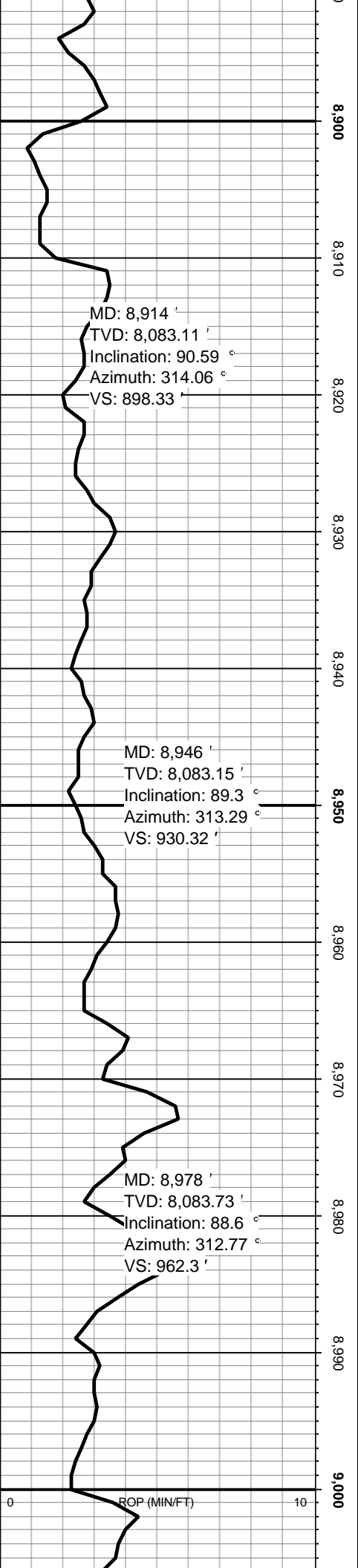
DOL: clr, off-wht, wht, lt gy, gy, med-hd, mic xln, sm-suc, por, sm,vugular

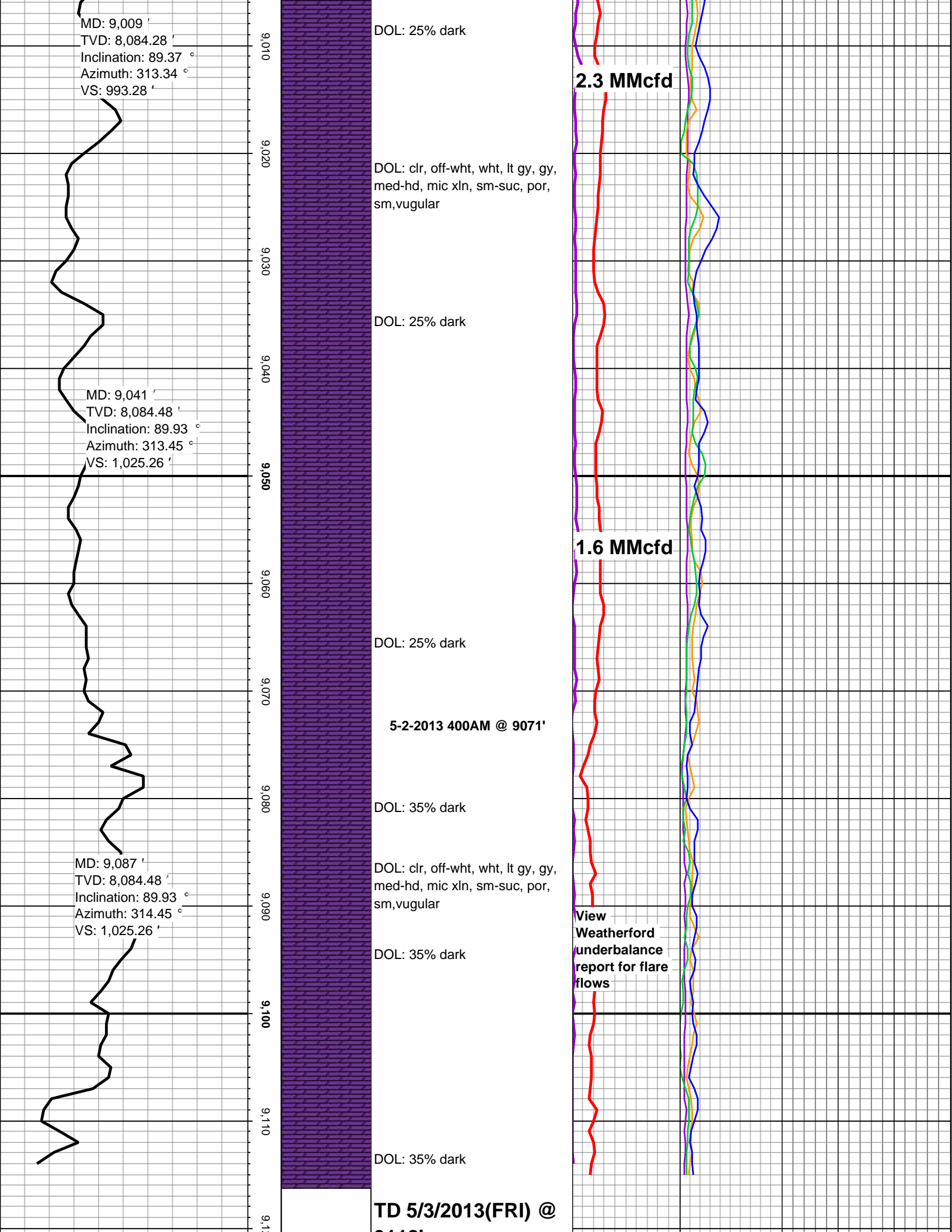
DOL: 15% dark

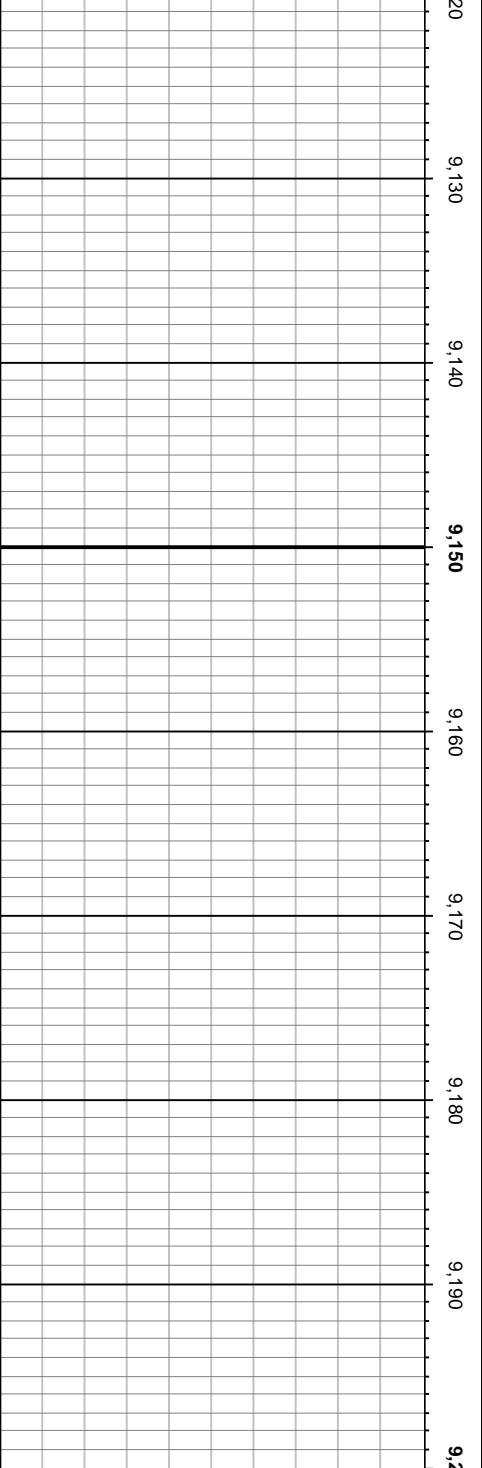
5-1-2013 400AM @ 8857'

DOL: 20% dark









9118'

TOOH, rig down directional,
TIH, cemented lateral plug

5-4-2013 400AM: Waiting on
Cement to dry

WELL ABANDONED &
PLUGGED, STARTING LATERAL
#2 ON 5-6-2013 WILL BE ON
NEW LOG

