

Well Name: **Kaiser 25-10**

Surface Location: Kaiser Pad Sec.10-T6N-R65W
North American Datum 1983 US State Plane 1983 Colorado Northern Zone

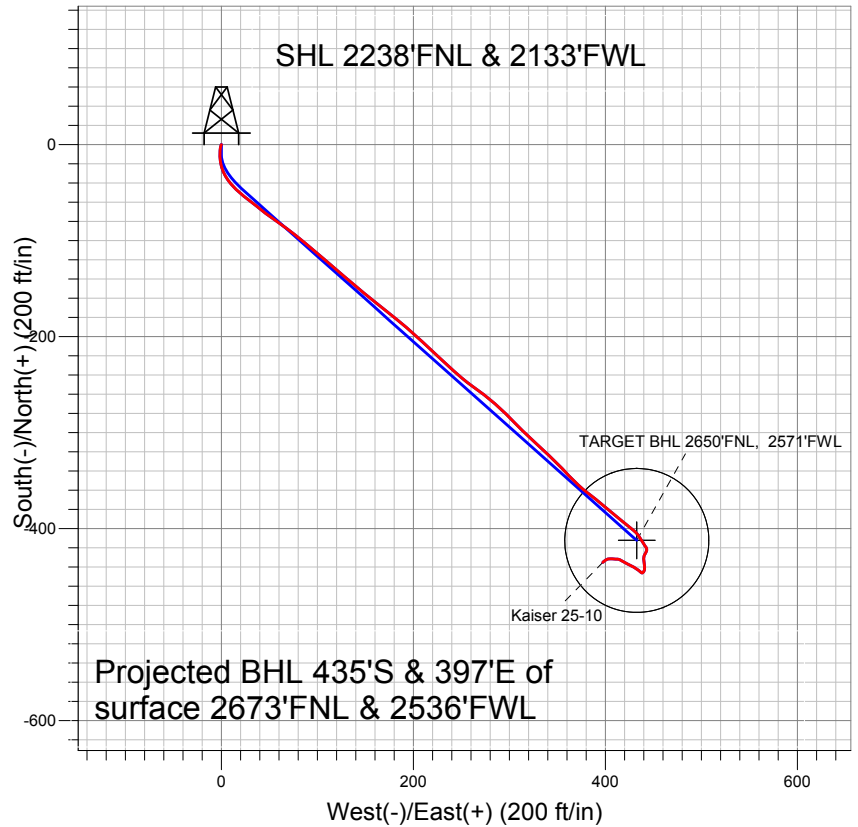
Ground Elevation: 4773.0

+N/-S	+E/-W	Northing	Easting	Latitude	Longitude
0.0	0.0	1426988.06	3236011.44	40.502383	-104.651299

Original Well Elev WELL @ 4789.0ft (Original Well Elev)

Slot

BAYSWATER EXPLORATION & PRODUCTION



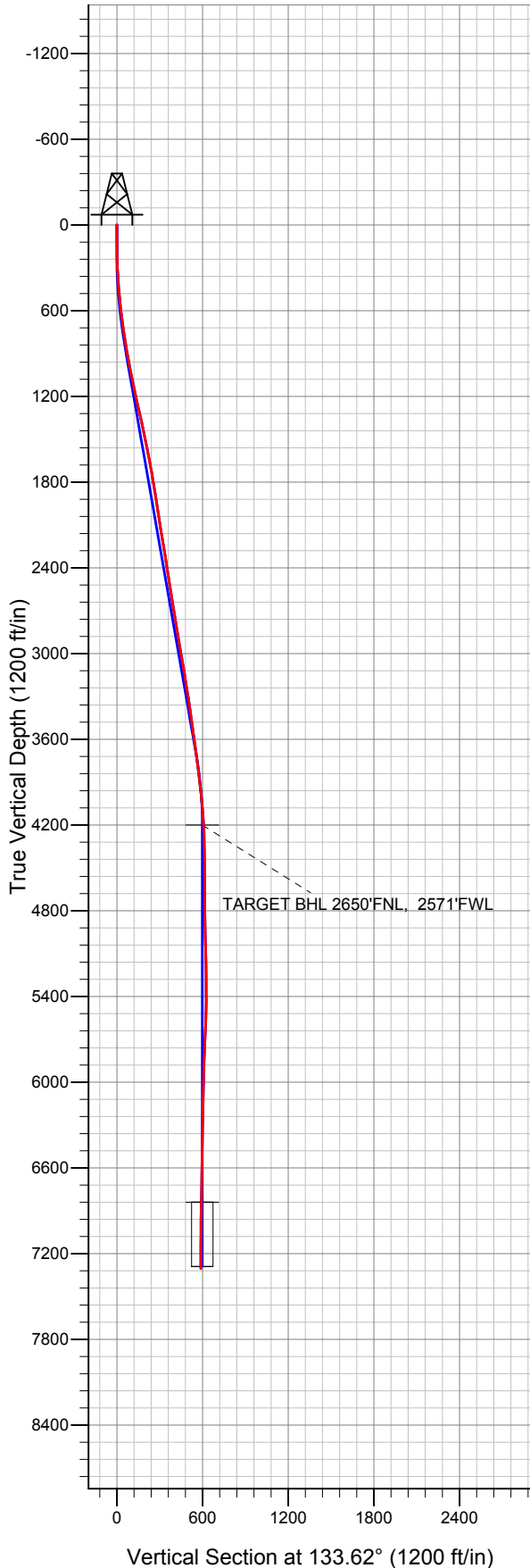
LEGEND

- Kaiser 25-10, Wellbore #1, Plan #2 (12-07-12) V0
- Wellbore #1
- Survey #1

Final Survey Plot

Projected Final Survey -
7355'MD & 7304'TVD @ 586'VS
1.0 deg Inc 230.3 deg AZ

Project: SEC.10-T6N-R65W
Site: Kaiser Pad Sec.10-T6N-R65W
Well: Kaiser 25-10
Plan: Wellbore #1





Directional

BAYSWATER EXPLORATION & PRODUCTION

SEC.10-T6N-R65W

Kaiser Pad Sec.10-T6N-R65W

Kaiser 25-10

Wellbore #1

Survey: Survey #1

Standard Survey Report

17 December, 2012

Survey	Wellbore Data									
	Measured Depth (ft)	Inclination (°)	Azimuth (°)	Vertical Depth (ft)	+N/-S (ft)	+E/-W (ft)	Vertical Section (ft)	Dogleg Rate (°/100ft)	Build Rate (°/100ft)	Turn Rate (°/100ft)
Main Wellbore	0.0	0.00	0.00	0.0	0.0	0.0	0.0	0.00	0.00	0.00
	95.0	0.70	204.30	95.0	-0.5	-0.2	0.2	0.74	0.74	0.00
	183.0	1.20	192.30	183.0	-1.9	-0.7	0.8	0.61	0.57	-13.64
	274.0	2.90	183.90	273.9	-5.1	-1.0	2.8	1.89	1.87	-9.23
	365.0	4.50	183.20	364.7	-11.0	-1.4	6.6	1.76	1.76	-0.77
	456.0	6.10	169.40	455.3	-19.3	-0.7	12.8	2.24	1.76	-15.16
	546.0	6.60	158.40	544.8	-28.8	2.1	21.4	1.46	0.56	-12.22
	643.0	7.60	140.30	641.1	-39.0	8.3	32.8	2.51	1.03	-18.66
	733.0	7.90	131.70	730.2	-47.6	16.7	44.9	1.33	0.33	-9.56
	827.0	8.60	129.90	823.3	-56.5	26.9	58.4	0.79	0.74	-1.91
	921.0	10.40	128.30	916.0	-66.2	38.9	73.9	1.94	1.91	-1.70
	1,015.0	11.60	124.80	1,008.2	-76.9	53.4	91.7	1.46	1.28	-3.72

Company:	BAYSWATER EXPLORATION & PRODUCTION	Local Co-ordinate Reference:	Well Kaiser 25-10
Project:	SEC.10-T6N-R65W	TVD Reference:	WELL @ 4789.0ft (Original Well Elev)
Site:	Kaiser Pad Sec.10-T6N-R65W	MD Reference:	WELL @ 4789.0ft (Original Well Elev)
Well:	Kaiser 25-10	North Reference:	True
Wellbore:	Wellbore #1	Survey Calculation Method:	Minimum Curvature
Design:	Wellbore #1	Database:	Landmark

Survey									
Measured Depth (ft)	Inclination (°)	Azimuth (°)	Vertical Depth (ft)	+N/-S (ft)	+E/-W (ft)	Vertical Section (ft)	Dogleg Rate (°/100ft)	Build Rate (°/100ft)	Turn Rate (°/100ft)
1,108.0	12.10	126.70	1,099.3	-88.0	68.9	110.6	0.68	0.54	2.04
1,202.0	12.80	130.40	1,191.1	-100.7	84.7	130.8	1.13	0.74	3.94
1,296.0	12.50	129.00	1,282.8	-113.8	100.5	151.3	0.46	-0.32	-1.49
1,389.0	11.90	131.30	1,373.7	-126.5	115.5	170.9	0.83	-0.65	2.47
1,483.0	11.90	131.30	1,465.7	-139.3	130.1	190.3	0.00	0.00	0.00
1,577.0	11.80	129.00	1,557.7	-151.7	144.9	209.5	0.51	-0.11	-2.45
1,670.0	10.90	128.70	1,648.8	-163.2	159.1	227.8	0.97	-0.97	-0.32
1,764.0	9.80	129.40	1,741.3	-173.8	172.2	244.6	1.18	-1.17	0.74
1,858.0	9.10	127.60	1,834.0	-183.5	184.3	260.0	0.81	-0.74	-1.91
1,951.0	9.00	132.00	1,925.9	-192.8	195.5	274.6	0.75	-0.11	4.73
2,045.0	9.20	132.40	2,018.7	-202.8	206.5	289.4	0.22	0.21	0.43
2,139.0	8.80	135.50	2,111.5	-213.0	217.1	304.1	0.67	-0.43	3.30
2,233.0	9.10	130.10	2,204.4	-222.9	227.9	318.7	0.95	0.32	-5.74
2,326.0	9.90	132.70	2,296.1	-233.1	239.4	334.1	0.98	0.86	2.80
2,420.0	8.60	131.80	2,388.9	-243.2	250.5	349.2	1.39	-1.38	-0.96
2,514.0	9.10	124.40	2,481.8	-252.1	261.9	363.5	1.32	0.53	-7.87
2,607.0	8.90	127.60	2,573.6	-260.7	273.7	377.9	0.58	-0.22	3.44
2,701.0	9.10	131.70	2,666.5	-270.0	285.0	392.6	0.71	0.21	4.36
2,795.0	9.80	134.10	2,759.2	-280.6	296.3	408.0	0.85	0.74	2.55
2,888.0	8.90	136.20	2,851.0	-291.3	306.9	423.1	1.03	-0.97	2.26
2,982.0	10.00	134.50	2,943.7	-302.2	317.8	438.6	1.21	1.17	-1.81
3,076.0	9.40	131.10	3,036.3	-313.0	329.4	454.4	0.88	-0.64	-3.62
3,169.0	9.50	134.30	3,128.1	-323.3	340.6	469.7	0.58	0.11	3.44
3,263.0	9.10	136.10	3,220.8	-334.1	351.3	484.8	0.53	-0.43	1.91
3,357.0	9.00	135.70	3,313.7	-344.7	361.6	499.6	0.13	-0.11	-0.43
3,450.0	8.60	133.10	3,405.6	-354.7	371.8	513.8	0.61	-0.43	-2.80
3,544.0	7.60	128.30	3,498.6	-363.3	381.8	527.1	1.28	-1.06	-5.11
3,638.0	8.30	127.10	3,591.7	-371.3	392.1	540.0	0.77	0.74	-1.28
3,732.0	7.80	130.60	3,684.8	-379.5	402.3	553.1	0.74	-0.53	3.72
3,825.0	7.20	130.40	3,777.0	-387.4	411.6	565.2	0.65	-0.65	-0.22
3,919.0	6.90	127.10	3,870.3	-394.6	420.6	576.7	0.54	-0.32	-3.51
4,013.0	6.30	131.30	3,963.7	-401.5	428.9	587.5	0.82	-0.64	4.47
4,106.0	4.70	146.20	4,056.3	-408.0	434.9	596.3	2.29	-1.72	16.02
4,200.0	4.40	148.50	4,150.0	-414.3	438.9	603.5	0.37	-0.32	2.45
4,249.7	3.29	146.43	4,199.5	-417.1	440.7	606.8	2.26	-2.24	-4.17
TARGET BHL 2650'FNL, 2571'FWL									
4,294.0	2.30	142.90	4,243.8	-418.8	441.9	608.9	2.26	-2.23	-7.97
4,387.0	1.10	182.00	4,336.7	-421.2	443.0	611.3	1.72	-1.29	42.04
4,481.0	0.90	180.00	4,430.7	-422.9	443.0	612.4	0.22	-0.21	-2.13
4,575.0	1.10	213.20	4,524.7	-424.4	442.5	613.1	0.64	0.21	35.32
4,668.0	1.60	207.40	4,617.7	-426.3	441.4	613.6	0.56	0.54	-6.24
4,762.0	1.20	203.60	4,711.7	-428.3	440.4	614.3	0.44	-0.43	-4.04
4,856.0	1.10	185.60	4,805.6	-430.1	439.9	615.2	0.40	-0.11	-19.15
4,949.0	1.70	173.70	4,898.6	-432.4	440.0	616.8	0.71	0.65	-12.80
5,043.0	1.80	175.60	4,992.6	-435.2	440.3	619.0	0.12	0.11	2.02
5,137.0	1.80	173.50	5,086.5	-438.2	440.5	621.2	0.07	0.00	-2.23
5,230.0	1.60	172.60	5,179.5	-440.9	440.9	623.3	0.22	-0.22	-0.97
5,324.0	1.30	196.90	5,273.5	-443.2	440.7	624.8	0.72	-0.32	25.85
5,418.0	1.10	212.50	5,367.4	-445.0	439.9	625.5	0.41	-0.21	16.60
5,511.0	1.10	242.20	5,460.4	-446.2	438.7	625.4	0.61	0.00	31.94
5,512.0	1.10	242.20	5,461.4	-446.2	438.7	625.4	0.00	0.00	0.00
5,605.0	2.40	312.60	5,554.4	-445.3	436.4	623.1	2.45	1.40	75.70
5,699.0	2.90	305.70	5,648.3	-442.6	433.1	618.8	0.63	0.53	-7.34

Company:	BAYSWATER EXPLORATION & PRODUCTION	Local Co-ordinate Reference:	Well Kaiser 25-10
Project:	SEC.10-T6N-R65W	TVD Reference:	WELL @ 4789.0ft (Original Well Elev)
Site:	Kaiser Pad Sec.10-T6N-R65W	MD Reference:	WELL @ 4789.0ft (Original Well Elev)
Well:	Kaiser 25-10	North Reference:	True
Wellbore:	Wellbore #1	Survey Calculation Method:	Minimum Curvature
Design:	Wellbore #1	Database:	Landmark

Survey									
Measured Depth (ft)	Inclination (°)	Azimuth (°)	Vertical Depth (ft)	+N/-S (ft)	+E/-W (ft)	Vertical Section (ft)	Dogleg Rate (°/100ft)	Build Rate (°/100ft)	Turn Rate (°/100ft)
5,793.0	2.60	299.90	5,742.2	-440.1	429.3	614.4	0.43	-0.32	-6.17
5,886.0	2.00	296.00	5,835.1	-438.4	426.0	610.8	0.67	-0.65	-4.19
5,980.0	1.60	296.50	5,929.1	-437.1	423.3	608.0	0.43	-0.43	0.53
6,074.0	1.60	295.10	6,023.0	-435.9	421.0	605.5	0.04	0.00	-1.49
6,167.0	1.20	304.40	6,116.0	-434.8	419.0	603.3	0.49	-0.43	10.00
6,261.0	1.00	298.80	6,210.0	-433.9	417.5	601.5	0.24	-0.21	-5.96
6,355.0	1.00	298.10	6,304.0	-433.1	416.0	599.9	0.01	0.00	-0.74
6,449.0	1.10	291.60	6,397.9	-432.4	414.5	598.3	0.17	0.11	-6.91
6,542.0	1.10	273.20	6,490.9	-432.0	412.7	596.8	0.38	0.00	-19.78
6,636.0	1.10	271.10	6,584.9	-431.9	410.9	595.5	0.04	0.00	-2.23
6,730.0	1.30	278.10	6,678.9	-431.8	409.0	593.9	0.26	0.21	7.45
6,823.0	1.10	272.60	6,771.9	-431.6	407.0	592.4	0.25	-0.22	-5.91
6,890.6	1.39	273.30	6,839.4	-431.5	405.6	591.3	0.43	0.43	1.04
TARGET CIRCLE 2650'FNL, 2571'FWL									
6,917.0	1.50	273.50	6,865.8	-431.4	404.9	590.8	0.43	0.43	0.76
7,011.0	1.30	252.60	6,959.8	-431.7	402.7	589.3	0.58	-0.21	-22.23
7,104.0	1.30	241.90	7,052.8	-432.5	400.7	588.5	0.26	0.00	-11.51
7,198.0	0.90	227.10	7,146.8	-433.5	399.2	588.1	0.52	-0.43	-15.74
7,292.0	1.00	230.30	7,240.8	-434.5	398.1	588.0	0.12	0.11	3.40
7,355.0	1.00	230.30	7,303.8	-435.2	397.2	587.8	0.00	0.00	0.00

Checked By: _____ Approved By: _____ Date: _____