

Well Name: **Booth 30-23**

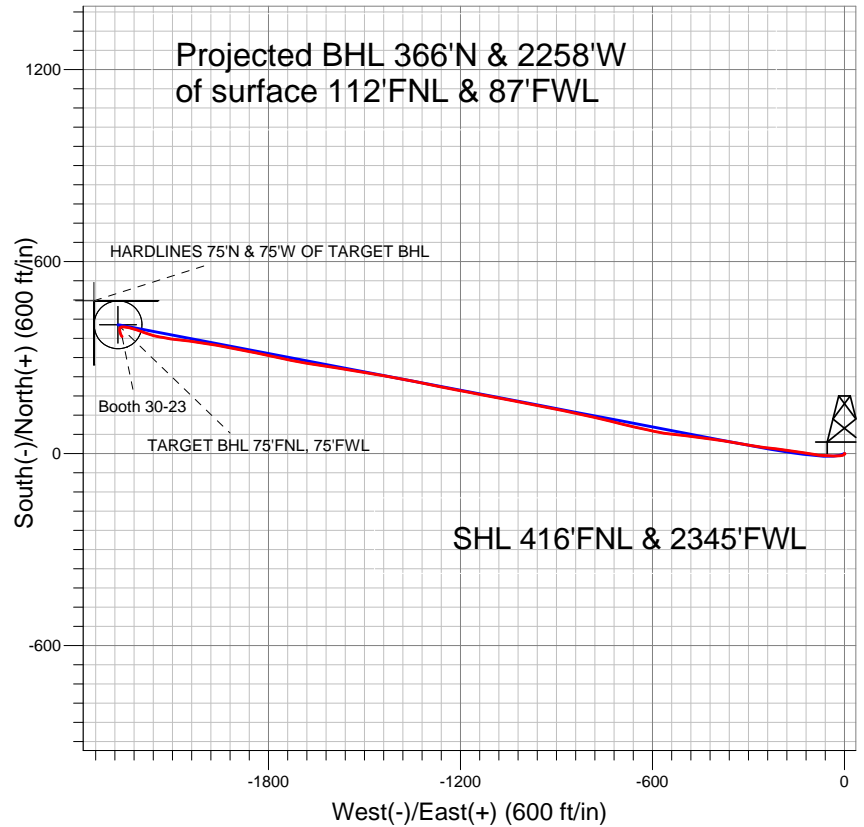
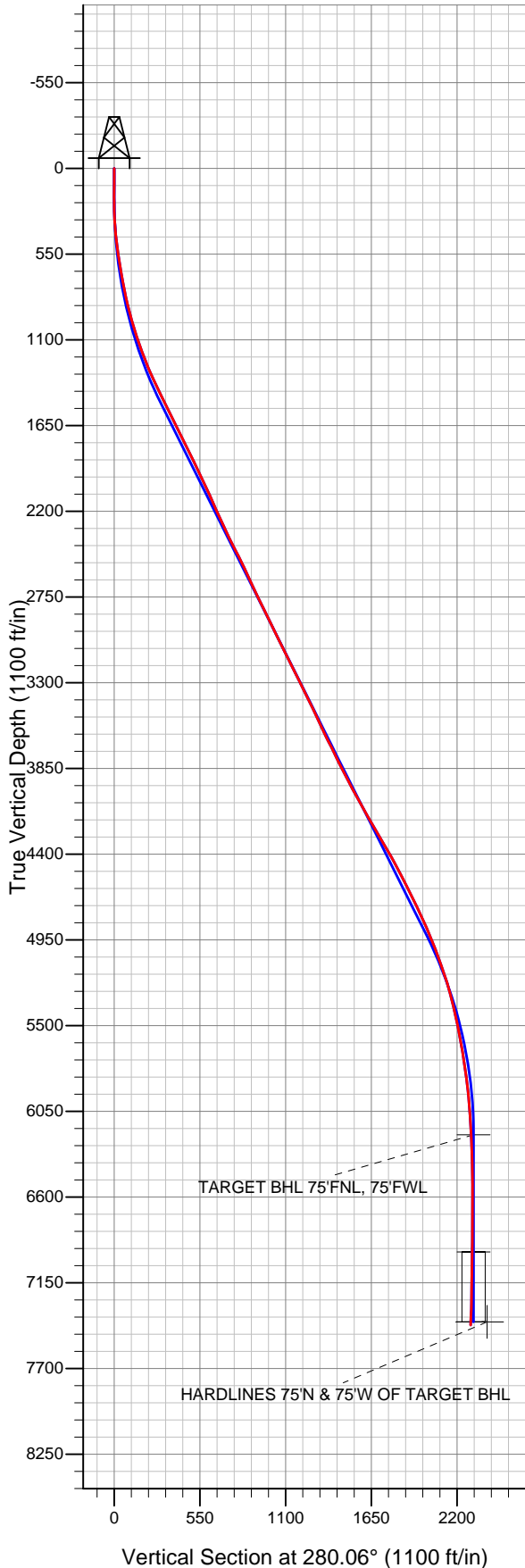
Surface Location: Booth 10 Pad Sec.23-T7N-R65W
 North American Datum 1983 US State Plane 1983 Colorado Northern Zone

Ground Elevation: 4897.0

+N/-S	+E/-W	Northing	Easting	Latitude	Longitude	Slot
0.0	0.0	1449921.61	3241351.88	40.565189	-104.631288	

Original Well Elev WELL @ 4913.0ft (Original Well Elev)

BAYSWATER EXPLORATION & PRODUCTION



LEGEND

- Booth 30-23, Wellbore #1, Plan #1 (11-02-12) R V0
- Wellbore #1
- Survey #1

Final Survey Plot

Projected Final Survey -
 7910°MD & 7421°TVD @ 2286°VS
 3.3 deg Inc 146.6 deg AZ

Project: SEC.23-T7N-R65W
 Site: Booth 10 Pad Sec.23-T7N-R65W
 Well: Booth 30-23
 Plan: Wellbore #1



Directional

BAYSWATER EXPLORATION & PRODUCTION

SEC.23-T7N-R65W

Booth 10 Pad Sec.23-T7N-R65W

Booth 30-23

Wellbore #1

Survey: Survey #1

Standard Survey Report

16 November, 2012

Survey	Wellbore Data									
	Measured Depth (ft)	Inclination (°)	Azimuth (°)	Vertical Depth (ft)	+N/-S (ft)	+E/-W (ft)	Vertical Section (ft)	Dogleg Rate (°/100ft)	Build Rate (°/100ft)	Turn Rate (°/100ft)
Main Survey	0.0	0.00	0.00	0.0	0.0	0.0	0.0	0.00	0.00	0.00
	97.0	0.50	89.30	97.0	0.0	0.4	-0.4	0.52	0.52	0.00
	184.0	0.60	173.90	184.0	-0.4	0.9	-0.9	0.86	0.11	97.24
	274.0	2.60	225.20	274.0	-2.4	-0.5	0.1	2.53	2.22	57.00
	365.0	4.50	251.70	364.8	-4.9	-5.4	4.5	2.71	2.09	29.12
	456.0	6.50	263.30	455.4	-6.6	-13.9	12.5	2.50	2.20	12.75
	547.0	8.60	268.40	545.6	-7.4	-25.8	24.1	2.42	2.31	5.60
	639.0	10.00	273.20	636.4	-7.2	-40.7	38.8	1.74	1.52	5.22
	735.0	10.30	272.60	730.9	-6.3	-57.6	55.6	0.33	0.31	-0.63
	829.0	12.20	275.50	823.0	-5.0	-75.9	73.8	2.11	2.02	3.09
	922.0	14.20	278.30	913.6	-2.4	-96.9	95.0	2.26	2.15	3.01
	1,016.0	16.80	280.40	1,004.2	1.7	-121.7	120.1	2.83	2.77	2.23

Company:	BAYSWATER EXPLORATION & PRODUCTION	Local Co-ordinate Reference:	Well Booth 30-23
Project:	SEC.23-T7N-R65W	TVD Reference:	WELL @ 4913.0ft (Original Well Elev)
Site:	Booth 10 Pad Sec.23-T7N-R65W	MD Reference:	WELL @ 4913.0ft (Original Well Elev)
Well:	Booth 30-23	North Reference:	True
Wellbore:	Wellbore #1	Survey Calculation Method:	Minimum Curvature
Design:	Wellbore #1	Database:	Landmark

Survey									
Measured Depth (ft)	Inclination (°)	Azimuth (°)	Vertical Depth (ft)	+N/-S (ft)	+E/-W (ft)	Vertical Section (ft)	Dogleg Rate (°/100ft)	Build Rate (°/100ft)	Turn Rate (°/100ft)
1,110.0	18.70	277.90	1,093.7	6.2	-150.0	148.8	2.18	2.02	-2.66
1,204.0	20.70	278.10	1,182.2	10.6	-181.4	180.4	2.13	2.13	0.21
1,297.0	22.20	277.00	1,268.7	15.1	-215.1	214.4	1.67	1.61	-1.18
1,391.0	24.60	277.00	1,355.0	19.7	-252.1	251.7	2.55	2.55	0.00
1,485.0	25.80	279.10	1,440.1	25.3	-291.8	291.7	1.59	1.28	2.23
1,578.0	26.80	279.90	1,523.4	32.1	-332.4	332.9	1.14	1.08	0.86
1,672.0	26.60	278.80	1,607.4	38.9	-374.1	375.1	0.57	-0.21	-1.17
1,766.0	26.60	278.10	1,691.5	45.1	-415.7	417.2	0.33	0.00	-0.74
1,859.0	26.40	277.40	1,774.7	50.7	-456.8	458.7	0.40	-0.22	-0.75
1,953.0	26.00	277.00	1,859.0	55.9	-498.0	500.1	0.47	-0.43	-0.43
2,047.0	25.70	276.00	1,943.6	60.6	-538.7	541.0	0.56	-0.32	-1.06
2,140.0	23.80	280.40	2,028.1	66.1	-577.2	579.9	2.84	-2.04	4.73
2,234.0	24.40	283.00	2,113.9	73.9	-614.8	618.3	1.30	0.64	2.77
2,328.0	24.70	282.30	2,199.4	82.4	-652.9	657.3	0.44	0.32	-0.74
2,422.0	25.20	283.40	2,284.6	91.2	-691.6	696.9	0.73	0.53	1.17
2,515.0	26.20	284.90	2,368.4	101.1	-730.7	737.1	1.28	1.08	1.61
2,609.0	26.90	283.40	2,452.5	111.4	-771.4	779.0	1.03	0.74	-1.60
2,703.0	26.10	280.70	2,536.6	120.1	-812.4	820.9	1.54	-0.85	-2.87
2,796.0	25.10	281.40	2,620.5	127.8	-851.8	861.1	1.12	-1.08	0.75
2,890.0	24.89	282.50	2,705.7	136.0	-890.7	900.8	0.54	-0.22	1.17
2,984.0	26.60	282.10	2,790.4	144.7	-930.6	941.6	1.83	1.82	-0.43
3,077.0	25.60	280.70	2,873.9	152.8	-970.7	982.5	1.26	-1.08	-1.51
3,171.0	26.00	280.90	2,958.5	160.5	-1,010.9	1,023.4	0.44	0.43	0.21
3,265.0	26.40	280.70	3,042.9	168.3	-1,051.7	1,064.9	0.44	0.43	-0.21
3,358.0	26.70	280.60	3,126.0	176.0	-1,092.5	1,106.4	0.33	0.32	-0.11
3,452.0	25.90	280.70	3,210.3	183.7	-1,133.4	1,148.1	0.85	-0.85	0.11
3,546.0	26.30	281.60	3,294.7	191.7	-1,174.0	1,189.4	0.60	0.43	0.96
3,639.0	26.40	280.00	3,378.1	199.4	-1,214.6	1,230.7	0.77	0.11	-1.72
3,733.0	25.70	282.10	3,462.5	207.3	-1,255.1	1,272.0	1.23	-0.74	2.23
3,827.0	25.00	280.20	3,547.5	215.1	-1,294.5	1,312.2	1.14	-0.74	-2.02
3,921.0	25.70	282.00	3,632.4	222.8	-1,334.0	1,352.4	1.11	0.74	1.91
4,014.0	27.30	281.80	3,715.6	231.4	-1,374.6	1,393.9	1.72	1.72	-0.22
4,108.0	26.20	280.00	3,799.6	239.4	-1,416.2	1,436.2	1.45	-1.17	-1.91
4,202.0	26.40	279.70	3,883.9	246.5	-1,457.2	1,477.9	0.26	0.21	-0.32
4,295.0	27.70	279.00	3,966.7	253.4	-1,498.9	1,520.2	1.44	1.40	-0.75
4,389.0	28.80	279.10	4,049.5	260.4	-1,542.9	1,564.6	1.17	1.17	0.11
4,483.0	30.10	279.00	4,131.3	267.7	-1,588.5	1,610.8	1.38	1.38	-0.11
4,576.0	30.80	279.10	4,211.5	275.1	-1,635.1	1,658.0	0.75	0.75	0.11
4,670.0	30.50	279.90	4,292.4	283.0	-1,682.3	1,705.9	0.54	-0.32	0.85
4,764.0	29.90	280.60	4,373.6	291.4	-1,728.9	1,753.2	0.74	-0.64	0.74
4,857.0	28.40	282.30	4,454.8	300.4	-1,773.2	1,798.5	1.84	-1.61	1.83
4,951.0	27.70	282.70	4,537.8	309.9	-1,816.4	1,842.6	0.77	-0.74	0.43
5,045.0	25.70	281.80	4,621.8	318.9	-1,857.7	1,884.8	2.17	-2.13	-0.96
5,139.0	26.40	280.60	4,706.2	326.9	-1,898.2	1,926.1	0.93	0.74	-1.28
5,232.0	25.40	280.40	4,789.9	334.3	-1,938.1	1,966.7	1.08	-1.08	-0.22
5,326.0	23.30	279.90	4,875.5	341.2	-1,976.3	2,005.5	2.24	-2.23	-0.53
5,420.0	21.80	277.70	4,962.3	346.7	-2,011.9	2,041.5	1.83	-1.60	-2.34
5,513.0	20.50	277.00	5,049.1	351.0	-2,045.1	2,075.0	1.42	-1.40	-0.75
5,607.0	18.50	276.30	5,137.7	354.6	-2,076.3	2,106.3	2.14	-2.13	-0.74
5,701.0	17.60	279.70	5,227.0	358.7	-2,105.1	2,135.4	1.47	-0.96	3.62
5,794.0	14.90	279.30	5,316.3	363.0	-2,130.8	2,161.4	2.91	-2.90	-0.43
5,888.0	12.30	283.90	5,407.7	367.3	-2,152.5	2,183.5	2.99	-2.77	4.89
5,982.0	11.00	287.40	5,499.7	372.4	-2,170.7	2,202.4	1.57	-1.38	3.72

Company:	BAYSWATER EXPLORATION & PRODUCTION	Local Co-ordinate Reference:	Well Booth 30-23
Project:	SEC.23-T7N-R65W	TVD Reference:	WELL @ 4913.0ft (Original Well Elev)
Site:	Booth 10 Pad Sec.23-T7N-R65W	MD Reference:	WELL @ 4913.0ft (Original Well Elev)
Well:	Booth 30-23	North Reference:	True
Wellbore:	Wellbore #1	Survey Calculation Method:	Minimum Curvature
Design:	Wellbore #1	Database:	Landmark

Survey

Measured Depth (ft)	Inclination (°)	Azimuth (°)	Vertical Depth (ft)	+N/-S (ft)	+E/-W (ft)	Vertical Section (ft)	Dogleg Rate (°/100ft)	Build Rate (°/100ft)	Turn Rate (°/100ft)
6,075.0	10.90	288.60	5,591.0	377.9	-2,187.5	2,219.9	0.27	-0.11	1.29
6,169.0	10.00	289.00	5,683.5	383.4	-2,203.7	2,236.8	0.96	-0.96	0.43
6,263.0	8.00	289.00	5,776.3	388.2	-2,217.6	2,251.3	2.13	-2.13	0.00
6,357.0	7.20	284.90	5,869.5	391.8	-2,229.5	2,263.6	1.03	-0.85	-4.36
6,450.0	5.40	280.00	5,961.9	394.1	-2,239.4	2,273.8	2.02	-1.94	-5.27
6,544.0	4.20	276.70	6,055.6	395.2	-2,247.2	2,281.7	1.31	-1.28	-3.51
6,638.0	3.20	270.00	6,149.4	395.6	-2,253.2	2,287.7	1.16	-1.06	-7.13
6,689.4	2.76	268.56	6,200.7	395.6	-2,255.9	2,290.3	0.87	-0.86	-2.81
TARGET BHL 75'FNL, 75'FWL									
6,731.0	2.40	267.00	6,242.3	395.5	-2,257.8	2,292.1	0.87	-0.86	-3.74
6,825.0	2.00	251.20	6,336.2	394.9	-2,261.3	2,295.5	0.77	-0.43	-16.81
6,919.0	1.10	226.10	6,430.2	393.7	-2,263.5	2,297.5	1.18	-0.96	-26.70
7,012.0	1.10	209.00	6,523.2	392.3	-2,264.6	2,298.3	0.35	0.00	-18.39
7,106.0	1.30	196.00	6,617.1	390.5	-2,265.3	2,298.7	0.36	0.21	-13.83
7,200.0	1.30	163.10	6,711.1	388.5	-2,265.3	2,298.3	0.78	0.00	-35.00
7,293.0	1.50	177.70	6,804.1	386.3	-2,264.9	2,297.6	0.44	0.22	15.70
7,387.0	1.60	174.20	6,898.1	383.7	-2,264.7	2,296.9	0.15	0.11	-3.72
7,440.3	1.77	171.76	6,951.4	382.2	-2,264.5	2,296.5	0.34	0.32	-4.57
TARGET CIRCLE 75'FNL & 75'FWL									
7,481.0	1.90	170.20	6,992.0	380.9	-2,264.3	2,296.0	0.34	0.32	-3.85
7,574.0	1.90	163.10	7,085.0	377.9	-2,263.6	2,294.8	0.25	0.00	-7.63
7,668.0	1.80	159.30	7,178.9	375.0	-2,262.6	2,293.4	0.17	-0.11	-4.04
7,762.0	2.00	159.40	7,272.9	372.1	-2,261.5	2,291.8	0.21	0.21	0.11
7,856.0	3.40	147.00	7,366.8	368.2	-2,259.5	2,289.0	1.61	1.49	-13.19
HARDLINES 75'N & 75'W OF TARGET BHL									
7,910.0	3.30	146.60	7,420.7	365.6	-2,257.7	2,286.9	0.19	-0.19	-0.74

Checked By: _____ Approved By: _____ Date: _____