

Well Name: **Booth 31-23**

Surface Location: Booth 10 Pad Sec.23-T7N-R65W
 North American Datum 1983 US State Plane 1983 Colorado Northern Zone

Ground Elevation: 4896.0

+N/-S +E/-W
 0.0 0.0

Northing
 1449891.85

Easting
 3241363.56

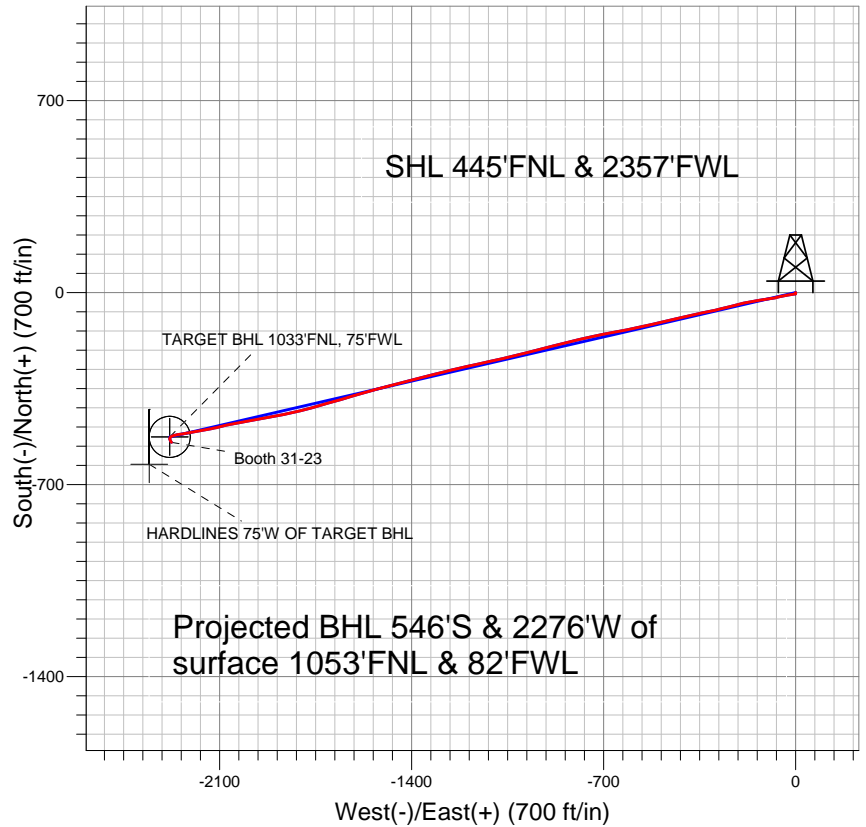
Latitude
 40.565107

Longitude
 -104.631247

Slot

Original Well Elev WELL @ 4912.0ft (Original Well Elev)

BAYSWATER EXPLORATION & PRODUCTION



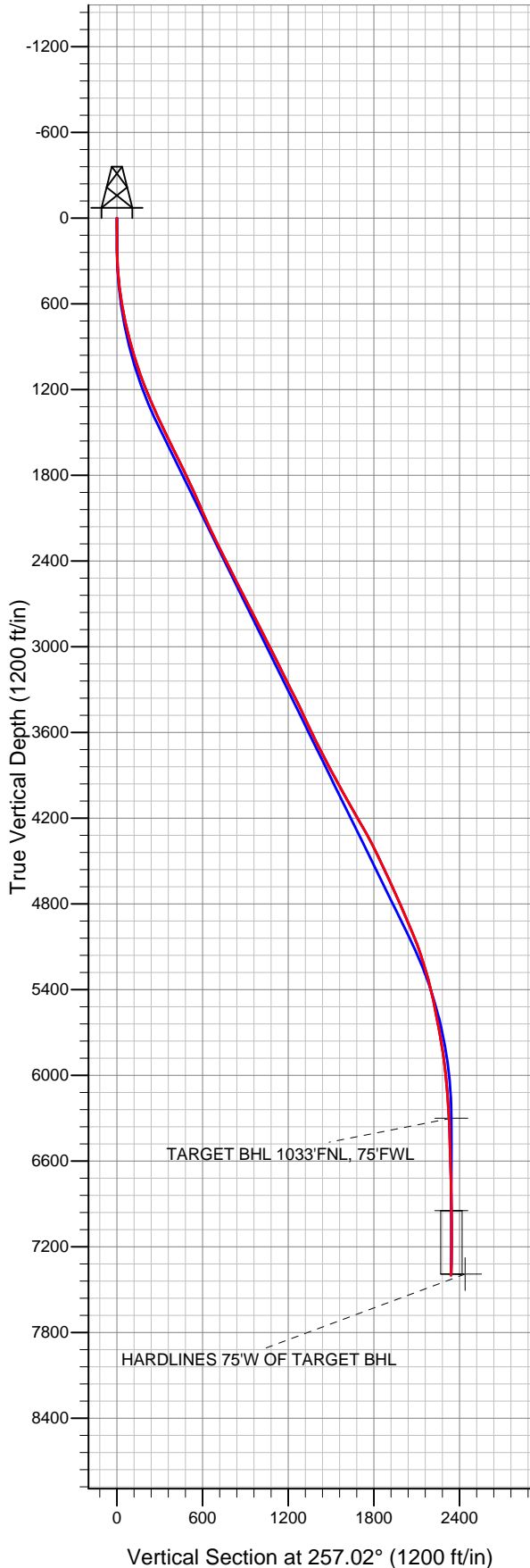
LEGEND

- ◆ Booth 31-23, Wellbore #1, Plan #1 (11-16-12) R V0
- Wellbore #1
- Survey #1

Final Survey Plot

Projected Final Survey -
 7894'MD & 7400'TVD @ 2340'VS
 2.9 deg Inc 145.7 deg AZ

Project: SEC.23-T7N-R65W
 Site: Booth 10 Pad Sec.23-T7N-R65W
 Well: Booth 31-23
 Plan: Wellbore #1





Directional

BAYSWATER EXPLORATION & PRODUCTION

SEC.23-T7N-R65W

Booth 10 Pad Sec.23-T7N-R65W

Booth 31-23

Wellbore #1

Survey: Survey #1

Standard Survey Report

26 November, 2012

Company:	BAYSWATER EXPLORATION & PRODUCTION	Local Co-ordinate Reference:	Well Booth 31-23
Project:	SEC.23-T7N-R65W	TVD Reference:	WELL @ 4912.0ft (Original Well Elev)
Site:	Booth 10 Pad Sec.23-T7N-R65W	MD Reference:	WELL @ 4912.0ft (Original Well Elev)
Well:	Booth 31-23	North Reference:	True
Wellbore:	Wellbore #1	Survey Calculation Method:	Minimum Curvature
Design:	Wellbore #1	Database:	Landmark

Survey									
Measured Depth (ft)	Inclination (°)	Azimuth (°)	Vertical Depth (ft)	+N/-S (ft)	+E/-W (ft)	Vertical Section (ft)	Dogleg Rate (°/100ft)	Build Rate (°/100ft)	Turn Rate (°/100ft)
1,141.0	20.20	259.10	1,120.2	-34.4	-169.2	172.6	1.75	1.70	-1.17
1,234.0	22.30	256.30	1,206.8	-41.6	-202.1	206.3	2.51	2.26	-3.01
1,328.0	23.40	255.90	1,293.5	-50.4	-237.5	242.8	1.18	1.17	-0.43
1,422.0	24.20	256.80	1,379.5	-59.3	-274.4	280.7	0.93	0.85	0.96
1,515.0	25.60	258.90	1,463.8	-67.5	-312.7	319.8	1.78	1.51	2.26
1,609.0	26.60	257.50	1,548.2	-76.0	-353.1	361.2	1.25	1.06	-1.49
1,703.0	26.60	256.10	1,632.3	-85.6	-394.1	403.3	0.67	0.00	-1.49
1,796.0	26.10	256.60	1,715.6	-95.4	-434.2	444.5	0.59	-0.54	0.54
1,890.0	25.10	256.60	1,800.4	-104.8	-473.7	485.2	1.06	-1.06	0.00
1,984.0	24.40	257.80	1,885.8	-113.5	-512.1	524.5	0.92	-0.74	1.28
2,078.0	23.30	257.90	1,971.7	-121.5	-549.3	562.5	1.17	-1.17	0.11
2,171.0	23.80	258.90	2,057.0	-129.0	-585.7	599.7	0.69	0.54	1.08
2,265.0	24.60	258.90	2,142.7	-136.4	-623.5	638.2	0.85	0.85	0.00
2,359.0	26.00	259.30	2,227.7	-144.0	-662.9	678.3	1.50	1.49	0.43
2,452.0	26.20	257.50	2,311.2	-152.2	-703.0	719.2	0.88	0.22	-1.94
2,546.0	27.00	258.20	2,395.3	-161.1	-744.1	761.3	0.91	0.85	0.74
2,640.0	27.10	257.90	2,479.0	-169.9	-786.0	804.0	0.18	0.11	-0.32
2,733.0	27.30	256.50	2,561.7	-179.3	-827.4	846.6	0.72	0.22	-1.51
2,827.0	26.40	253.70	2,645.6	-190.2	-868.4	889.0	1.65	-0.96	-2.98
2,921.0	27.00	256.10	2,729.6	-201.2	-909.2	931.2	1.31	0.64	2.55
3,014.0	27.30	256.10	2,812.3	-211.4	-950.4	973.6	0.32	0.32	0.00
3,108.0	26.60	255.60	2,896.1	-221.8	-991.7	1,016.2	0.78	-0.74	-0.53
3,202.0	27.60	256.80	2,979.8	-232.0	-1,033.3	1,059.0	1.21	1.06	1.28
3,296.0	26.60	256.60	3,063.5	-241.9	-1,075.0	1,101.8	1.07	-1.06	-0.21
3,389.0	26.50	258.10	3,146.7	-251.0	-1,115.5	1,143.4	0.73	-0.11	1.61
3,483.0	25.60	257.90	3,231.1	-259.6	-1,155.9	1,184.7	0.96	-0.96	-0.21
3,577.0	27.10	257.20	3,315.3	-268.6	-1,196.6	1,226.4	1.63	1.60	-0.74
3,670.0	26.50	257.00	3,398.3	-277.9	-1,237.5	1,268.3	0.65	-0.65	-0.22
3,764.0	25.00	255.40	3,483.0	-287.6	-1,277.2	1,309.1	1.76	-1.60	-1.70
3,858.0	25.30	256.30	3,568.1	-297.4	-1,315.9	1,349.1	0.52	0.32	0.96
3,951.0	27.00	254.40	3,651.6	-307.8	-1,355.6	1,390.1	2.04	1.83	-2.04
4,045.0	26.10	257.00	3,735.7	-318.2	-1,396.3	1,432.0	1.56	-0.96	2.77
4,139.0	27.30	255.90	3,819.6	-328.1	-1,437.3	1,474.3	1.38	1.28	-1.17
4,232.0	28.80	254.90	3,901.7	-339.1	-1,479.6	1,518.0	1.69	1.61	-1.08
4,326.0	29.00	255.10	3,984.0	-350.9	-1,523.5	1,563.4	0.24	0.21	0.21
4,420.0	29.50	253.70	4,066.0	-363.2	-1,567.7	1,609.3	0.90	0.53	-1.49
4,513.0	30.10	253.70	4,146.7	-376.2	-1,612.1	1,655.4	0.65	0.65	0.00
4,607.0	30.00	254.50	4,228.1	-389.1	-1,657.4	1,702.4	0.44	-0.11	0.85
4,701.0	28.80	253.80	4,310.0	-401.7	-1,701.8	1,748.5	1.33	-1.28	-0.74
4,795.0	27.40	254.50	4,392.9	-413.8	-1,744.3	1,792.7	1.53	-1.49	0.74
4,888.0	25.80	254.70	4,476.1	-424.9	-1,784.5	1,834.3	1.72	-1.72	0.22
4,982.0	24.40	256.80	4,561.2	-434.7	-1,823.1	1,874.2	1.77	-1.49	2.23
5,076.0	24.40	258.40	4,646.8	-443.0	-1,861.1	1,913.0	0.70	0.00	1.70
5,169.0	24.20	259.10	4,731.5	-450.5	-1,898.6	1,951.3	0.38	-0.22	0.75
5,263.0	23.90	259.50	4,817.4	-457.6	-1,936.2	1,989.5	0.36	-0.32	0.43
5,357.0	24.40	260.70	4,903.2	-464.2	-1,974.1	2,027.9	0.75	0.53	1.28
5,450.0	22.90	260.00	4,988.3	-470.5	-2,010.9	2,065.2	1.64	-1.61	-0.75
5,544.0	20.30	259.80	5,075.7	-476.5	-2,045.0	2,099.7	2.77	-2.77	-0.21
5,638.0	18.20	256.10	5,164.5	-482.9	-2,075.3	2,130.7	2.58	-2.23	-3.94
5,731.0	17.30	255.90	5,253.1	-489.8	-2,102.8	2,159.1	0.97	-0.97	-0.22
5,825.0	14.80	257.90	5,343.4	-495.7	-2,128.1	2,185.0	2.72	-2.66	2.13
5,919.0	12.30	260.30	5,434.8	-499.9	-2,149.7	2,207.0	2.73	-2.66	2.55
6,013.0	10.90	261.90	5,526.8	-502.9	-2,168.3	2,225.9	1.53	-1.49	1.70

Company:	BAYSWATER EXPLORATION & PRODUCTION	Local Co-ordinate Reference:	Well Booth 31-23
Project:	SEC.23-T7N-R65W	TVD Reference:	WELL @ 4912.0ft (Original Well Elev)
Site:	Booth 10 Pad Sec.23-T7N-R65W	MD Reference:	WELL @ 4912.0ft (Original Well Elev)
Well:	Booth 31-23	North Reference:	True
Wellbore:	Wellbore #1	Survey Calculation Method:	Minimum Curvature
Design:	Wellbore #1	Database:	Landmark

Survey									
Measured Depth (ft)	Inclination (°)	Azimuth (°)	Vertical Depth (ft)	+N/-S (ft)	+E/-W (ft)	Vertical Section (ft)	Dogleg Rate (°/100ft)	Build Rate (°/100ft)	Turn Rate (°/100ft)
6,106.0	11.10	259.50	5,618.1	-505.7	-2,185.9	2,243.6	0.54	0.22	-2.58
6,200.0	10.60	257.20	5,710.5	-509.3	-2,203.2	2,261.3	0.70	-0.53	-2.45
6,294.0	9.10	261.00	5,803.1	-512.4	-2,219.0	2,277.3	1.74	-1.60	4.04
6,387.0	7.20	259.50	5,895.1	-514.6	-2,232.0	2,290.5	2.06	-2.04	-1.61
6,481.0	6.00	263.20	5,988.5	-516.2	-2,242.6	2,301.3	1.35	-1.28	3.94
6,575.0	5.20	259.10	6,082.0	-517.6	-2,251.7	2,310.4	0.95	-0.85	-4.36
6,668.0	4.00	257.50	6,174.7	-519.1	-2,259.0	2,317.9	1.30	-1.29	-1.72
6,762.0	3.30	257.00	6,268.6	-520.5	-2,264.8	2,323.9	0.75	-0.74	-0.53
6,794.4	3.06	255.71	6,300.9	-520.9	-2,266.6	2,325.7	0.78	-0.75	-3.98
TARGET BHL 1033'FNL, 75'FWL									
6,856.0	2.60	252.60	6,362.4	-521.7	-2,269.5	2,328.7	0.78	-0.74	-5.05
6,949.0	2.00	249.80	6,455.4	-522.9	-2,273.0	2,332.4	0.66	-0.65	-3.01
7,043.0	1.70	242.90	6,549.3	-524.1	-2,275.8	2,335.4	0.40	-0.32	-7.34
7,137.0	1.20	234.70	6,643.3	-525.3	-2,277.9	2,337.6	0.57	-0.53	-8.72
7,230.0	1.20	222.50	6,736.3	-526.6	-2,279.3	2,339.3	0.27	0.00	-13.12
7,324.0	1.20	212.20	6,830.2	-528.1	-2,280.5	2,340.9	0.23	0.00	-10.96
7,418.0	1.10	199.50	6,924.2	-529.8	-2,281.3	2,342.0	0.29	-0.11	-13.51
7,440.7	1.20	198.59	6,946.9	-530.2	-2,281.5	2,342.3	0.43	0.42	-4.00
TARGET CIRCLE 1033'FNL & 75'FWL									
7,512.0	1.50	196.50	7,018.2	-531.8	-2,282.0	2,343.1	0.43	0.43	-2.93
7,605.0	1.90	172.40	7,111.2	-534.5	-2,282.1	2,343.9	0.87	0.43	-25.91
7,699.0	2.60	154.60	7,205.1	-538.0	-2,281.0	2,343.6	1.04	0.74	-18.94
7,793.0	2.90	145.70	7,299.0	-541.9	-2,278.7	2,342.2	0.55	0.32	-9.47
7,885.2	2.90	145.70	7,391.0	-545.8	-2,276.1	2,340.5	0.00	0.00	0.00
HARDLINES 75'W OF TARGET BHL									
7,894.0	2.90	145.70	7,399.8	-546.1	-2,275.9	2,340.4	0.00	0.00	0.00

Checked By: _____ Approved By: _____ Date: _____