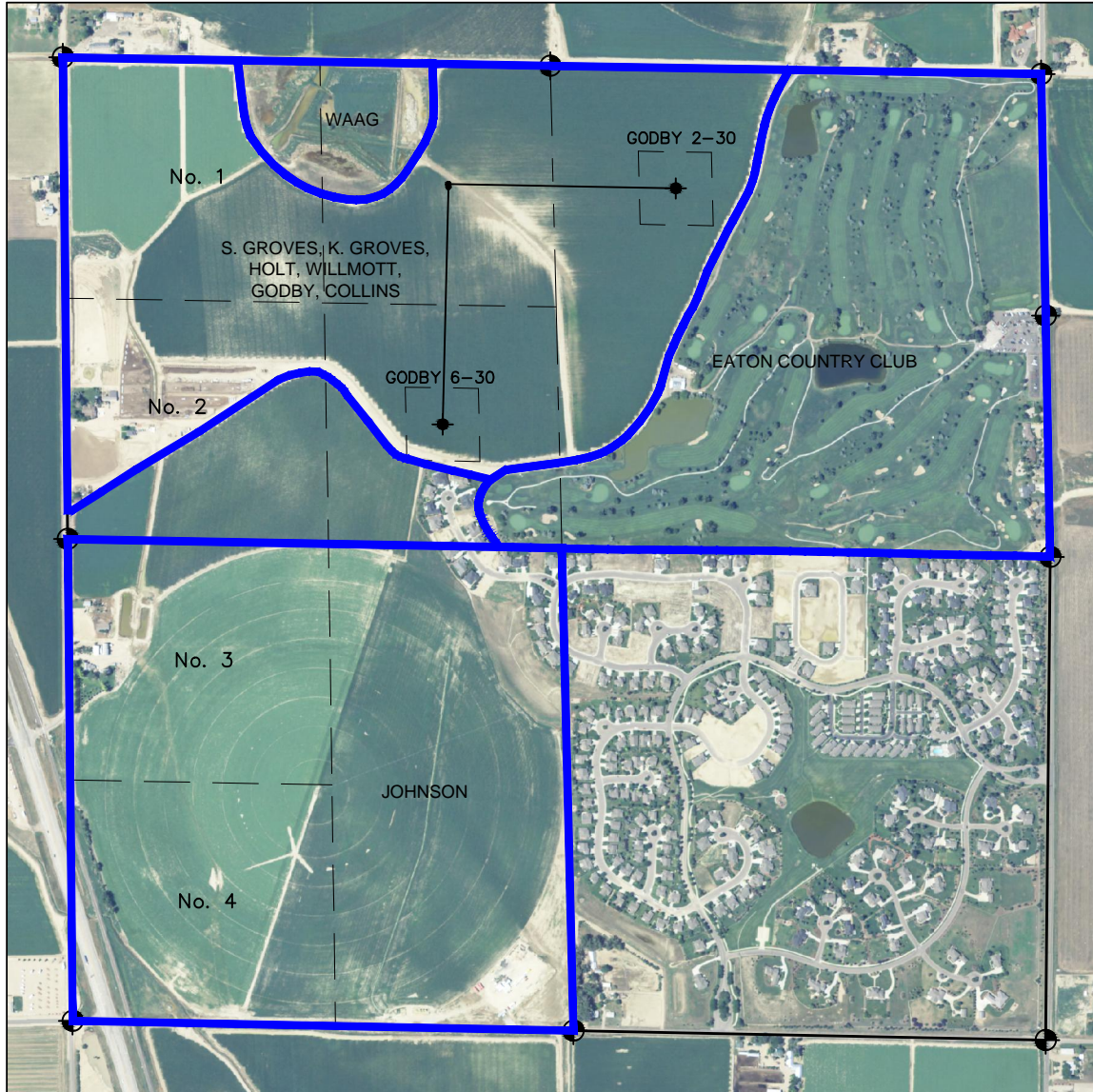


LEASE DRAWING: GODBY 30-B PAD



LEGEND

- = EXISTING MONUMENT
 = BOTTOM HOLE
 BH= BOTTOM HOLE
 = PROPOSED WELL
 = EXISTING WELL

NOTES:

GODBY 6-30 TO BE AT 671' FNL, 2102' FWL.
 BOTTOM HOLE AT 1971' FNL & 2057' FWL.
 GODBY 2-30 TO BE AT 656' FNL, 2101' FWL.
 BOTTOM HOLE AT 659' FNL & 2010' FWL.

PREPARED BY:



BAYSWATER EXPLORATION & PRODUCTION, LLC

FIELD DATE:
05-22-13

DRAWING DATE:
07-08-13

BY:
KAD

PAD NAME:
GODBY 30-B

SURFACE LOCATION:
NE 1/4 NW 1/4, SEC. 30, T7N, R65W, 6TH P.M.
WELD COUNTY, COLORADO

