

WELL LOCATION CERTIFICATE

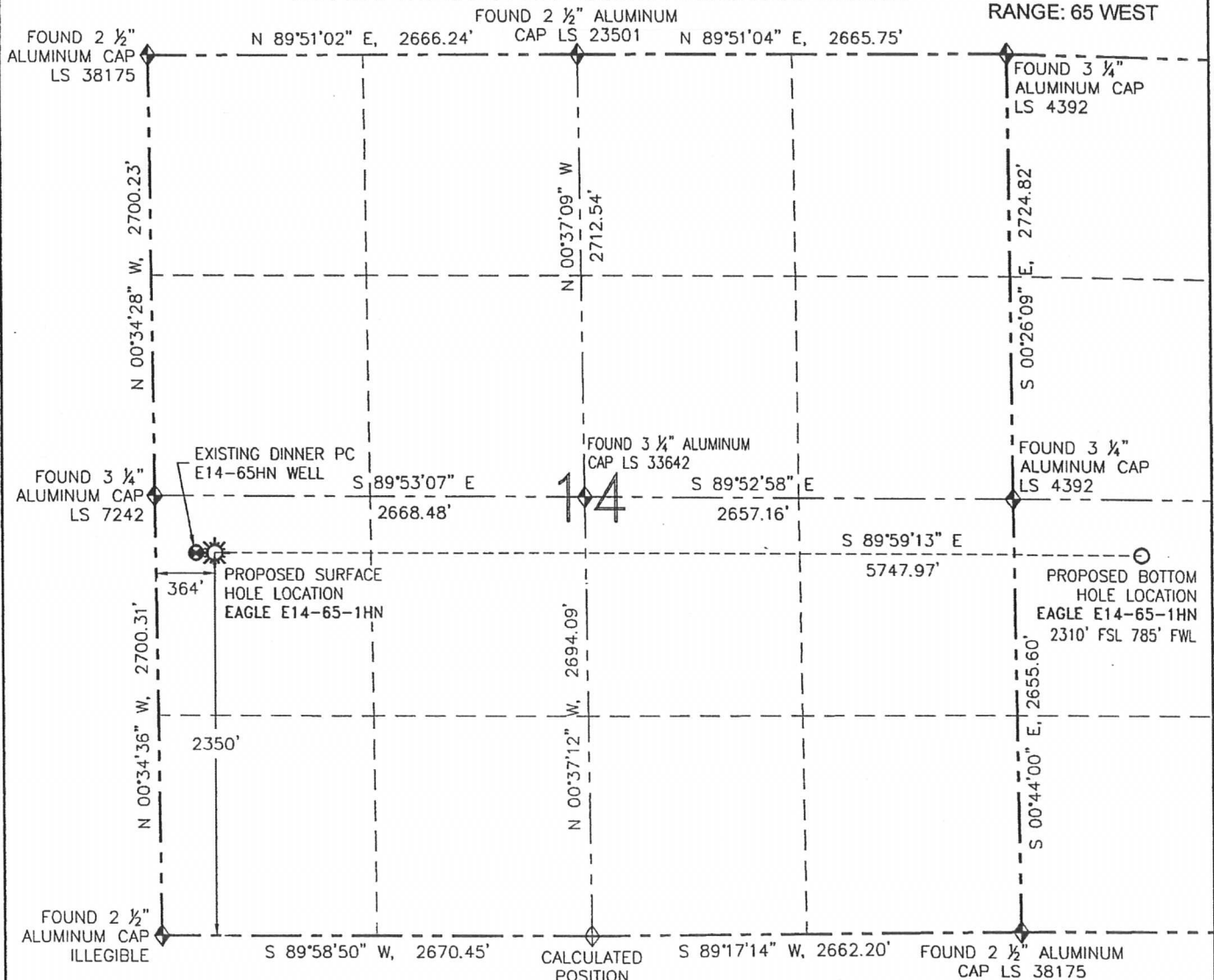
EAGLE E14-65-1HN

THIS MAP DOES NOT REPRESENT A BOUNDARY SURVEY

SECTION: 14

TOWNSHIP: 6 NORTH

RANGE: 65 WEST



0 1000'

SCALE: 1" = 1000'

LEGEND

- PROPOSED WELL
- EXISTING WELL
- BOTTOM HOLE
- FOUND MONUMENT
- CALCULATED POSITION

PAGE 1 OF SHEET 1

SURFACE HOLE LOCATION (NAD 83)

LATITUDE: N 40.48526°
 LONGITUDE: W 104.63877°
 ELEVATION: 4718
 PDOP: 2.0
 1/4-1/4: NW SW
 NEAREST PROPERTY LINE: 349' N

BOTTOM HOLE LOCATION

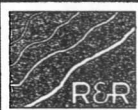
LATITUDE: N 40.48510°
 LONGITUDE: W 104.61811°

IN ACCORDANCE WITH A REQUEST FROM BRIAN JAMES-NOBLE ENERGY INC., R&R ENGINEERS-SURVEYORS, INC. HAS DETERMINED THE SURFACE HOLE LOCATION OF THE EAGLE E14-65-1HN WELL TO BE 2350' FSL AND 364' FWL AS MEASURED AT (90) DEGREES FROM THE SECTION LINES OF SECTION 14, TOWNSHIP 6 NORTH, RANGE 65 WEST OF THE 6TH PRINCIPAL MERIDIAN, WELD COUNTY, COLORADO. THE BOTTOM HOLE LOCATION, AS PROVIDED BY THE CLIENT, IS TO BE 2310' FSL AND 785' FWL OF SECTION 13, TOWNSHIP 6 NORTH, RANGE 65 WEST.

I HEREBY CERTIFY THAT THIS WELL LOCATION CERTIFICATE WAS PREPARED BY ME, OR UNDER MY DIRECT SUPERVISION, THAT THE FIELD WORK WAS COMPLETED ON 01/25/13, FOR AND ON BEHALF OF NOBLE ENERGY INC., THAT IT IS NOT A LAND SURVEY PLAT OR AN IMPROVEMENT SURVEY PLAT, AND THAT IT IS NOT TO BE RELIED UPON FOR ESTABLISHMENT OF FENCES, BUILDINGS, OR OTHER FUTURE IMPROVEMENT LINES.

NOTES:

1. BEARINGS ARE GRID BEARINGS OF THE COLORADO STATE PLANE COORDINATE SYSTEM, NORTH ZONE, NAD 83. THE LINEAL DIMENSIONS SHOWN HEREON ARE BASED UPON THE "U.S. SURVEY FOOT".
2. ELEVATIONS ARE BASED UPON NGS OPUS SOLUTION NAVD 88 DATUM COMPUTED USING GEOID09.
3. THE NEAREST EXISTING WELL IS: DINNER PC E14-65HN 114' W.
4. SEE LOCATION DRAWING FOR ALL IMPROVEMENTS WITHIN 400' OF THE OIL/GAS LOCATION.
5. SURFACE USE: CROPLAND.



FIELD DATE: 01/25/13

PLOT DATE: 03/27/13

DRAWN BY: CJD

JOB NO.: NE12383

SHEET NO.: 1 of 3

NOTICE:

ACCORDING TO COLORADO LAW, YOU MUST COMMENCE ANY LEGAL ACTION BASED UPON ANY DEFECT IN THIS W.L.C. WITHIN THREE YEARS AFTER YOU FIRST DISCOVER SUCH DEFECT. IN NO EVENT MAY ANY ACTION BASED UPON ANY DEFECT IN THIS W.L.C. BE COMMENCED MORE THAN TEN YEARS FROM THE DATE OF THE CERTIFICATION SHOWN HEREON (13-80-105 C.R.S.).



DAVID C. HOLMES, PLS 32828
 FOR AND ON BEHALF OF R&R ENGINEERS-SURVEYORS, INC.

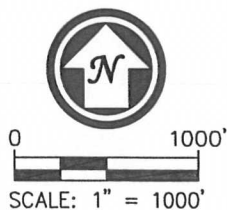
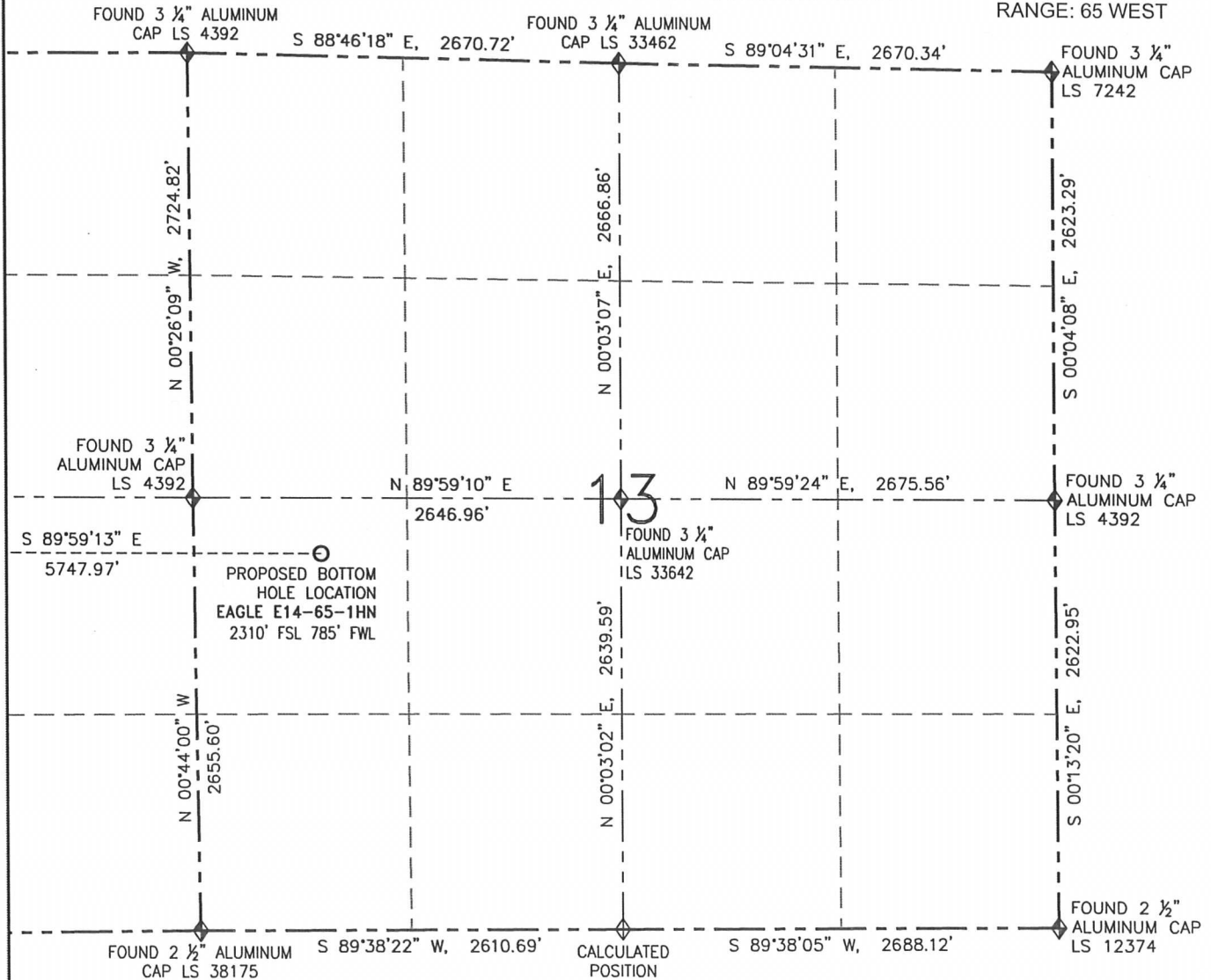
WELL LOCATION CERTIFICATE

EAGLE E14-65-1HN

SHL-SECTION: 14

THIS MAP DOES NOT REPRESENT A BOUNDARY SURVEY

TOWNSHIP: 6 NORTH
RANGE: 65 WEST



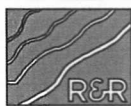
SURFACE HOLE LOCATION (NAD 83)

LATITUDE: N 40.48526°
LONGITUDE: W 104.63877°
ELEVATION: 4718
PDOP: 2.0
1/4-1/4: NW SW
NEAREST PROPERTY LINE: 349' N

BOTTOM HOLE LOCATION

LATITUDE: N 40.48510°
LONGITUDE: W 104.61811°

PAGE 2 OF SHEET 1



FIELD DATE: 01/25/13
PLOT DATE: 03/27/13
DRAWN BY: CJD
JOB NO.: NE12383
SHEET NO.: 1 of 3

NOTICE:

ACCORDING TO COLORADO LAW, YOU MUST COMMENCE ANY LEGAL ACTION BASED UPON ANY DEFECT IN THIS W.L.C. WITHIN THREE YEARS AFTER YOU FIRST DISCOVER SUCH DEFECT. IN NO EVENT MAY ANY ACTION BASED UPON ANY DEFECT IN THIS W.L.C. BE COMMENCED MORE THAN TEN YEARS FROM THE DATE OF THE CERTIFICATION SHOWN HEREON (13-80-105 C.R.S.).

LEGEND

- PROPOSED WELL
- EXISTING WELL
- BOTTOM HOLE
- FOUND MONUMENT
- CALCULATED POSITION

SITE SKETCH

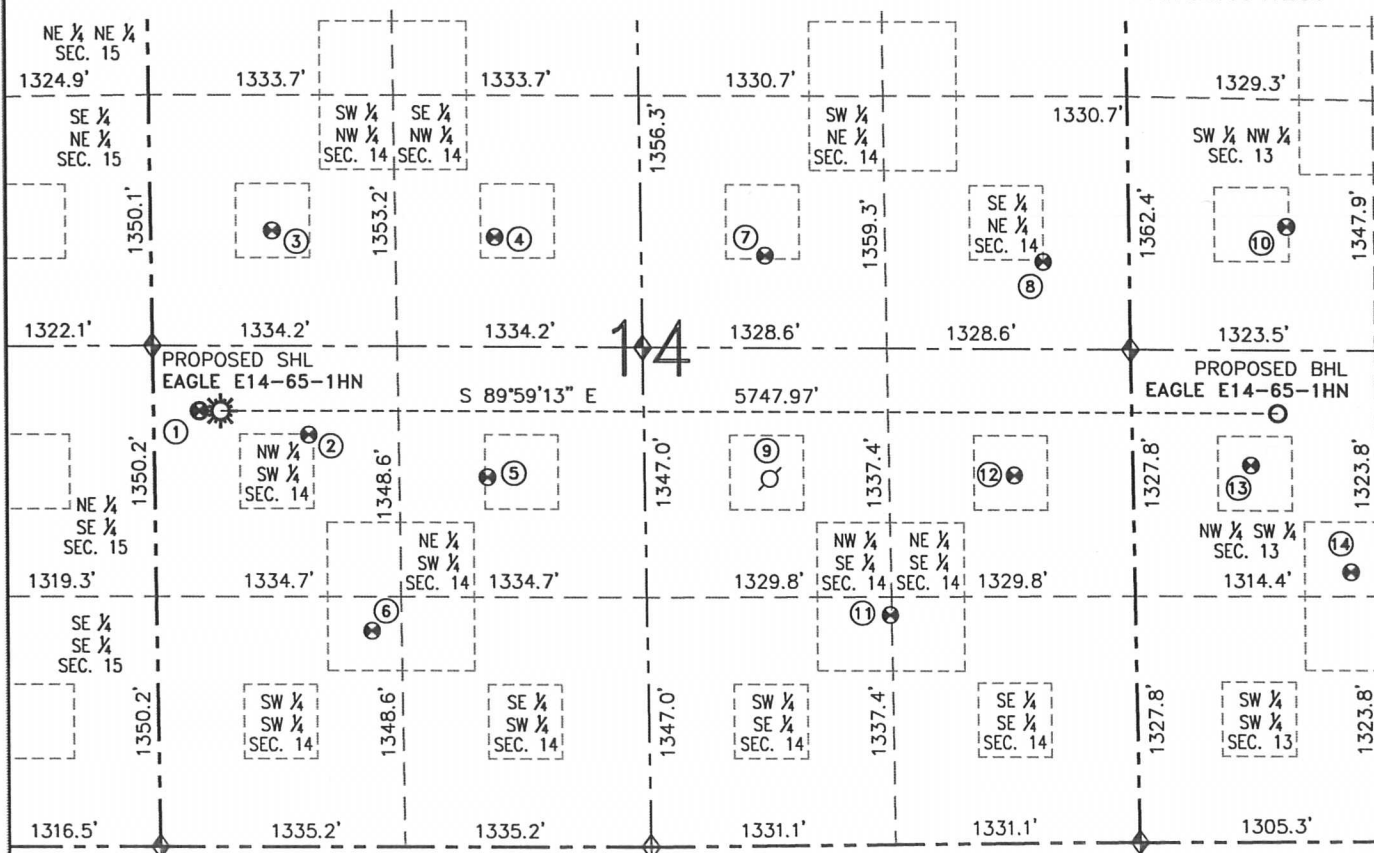
EAGLE E14-65-1HN

THIS MAP DOES NOT REPRESENT A BOUNDARY SURVEY

SECTION: 14

TOWNSHIP: 6 NORTH

RANGE: 65 WEST



① DINNER PC E14-65HN
NW/SW SEC. 14
2349' FSL
249' FWL
EL=4719
N 40.48526°
W 104.63918°
PDOP 2.6

② DINNER 14-32
NW/SW SEC. 14
2221' FSL
843' FWL
EL=4717
N 40.48489°
W 104.63704°
PDOP 2.7

③ DINNER E14-5
SW/NW SEC. 14
2081' FNL
661' FWL
EL=4720
N 40.48791°
W 104.63770°
PDOP 1.7

④ DINNER 14-2
SE/NW SEC. 14
2119' FNL
1873' FWL
EL=4735
N 40.48778°
W 104.63334°
PDOP 3.6

⑤ DINNER 14-31
NE/SW SEC. 14
1993' FSL
1814' FWL
EL=4715
N 40.48424°
W 104.63355°
PDOP 2.8

⑥ DINNER 14-35
SW/SW SEC. 14
1165' FSL
1171' FWL
EL=4717
N 40.48198°
W 104.63586°
PDOP 2.6

⑦ DINNER 14-13
SW/NE SEC. 14
2217' FNL
1985' FEL
EL=4737
N 40.48748°
W 104.62806°
PDOP 1.9

⑧ DINNER 14-14
SE/NE SEC. 14
2252' FNL
469' FEL
EL=4737
N 40.48736°
W 104.62261°
PDOP 2.5

⑨ PALSER E14-10
NW/SE SEC. 14
PER COGCC:
1980' FSL
1980' FEL
PLUGGED &
ABANDONED

⑩ ANDERSON 12-13
SW/NW SEC. 13
2039' FNL
848' FWL
EL=4707
N 40.48786°
W 104.61788°
PDOP 2.0

⑪ PALSER E14-23
SW/SE SEC. 14
1239' FSL
1339' FEL
EL=4713
N 40.48216°
W 104.62573°
PDOP 3.6

⑫ SCHWISOW E14-09
NE/SE SEC. 14
1985' FSL
645' FEL
EL=4711
N 40.48421°
W 104.62324°
PDOP 3.4

⑬ DINNER 13-32
NW/SW SEC. 13
2032' FSL
634' FWL
EL=4701
N 40.48434°
W 104.61865°
PDOP 3.7

⑭ DINNER 13-35
NW/SW SEC. 13
1455' FSL
1165' FWL
EL=4698
N 40.48275°
W 104.61673°
PDOP 2.3



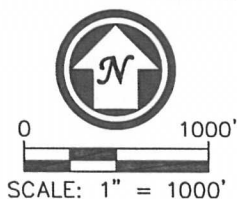
FIELD DATE: 01/25/13

PLOT DATE: 03/27/13

DRAWN BY: CJD

JOB NO.: NE12383

SHEET NO.: 2 of 3



NOTES:

- THIS SKETCH DOES NOT REPRESENT A BOUNDARY SURVEY.
- HORIZONTAL DATUM IS NAD 83.
- VERTICAL DATUM IS NAVD 88.

LEGEND

- PROPOSED WELL
- EXISTING WELL
- BOTTOM HOLE
- ABANDONED WELL
- FOUND MONUMENT
- CALCULATED POSITION