



**Scale 1:240 (5"=100') Imperial  
Measured Depth Log**

**Well Name:** McElmo Dome, Yellow Jacket G-1 (YG-1)  
**Location:** SHL: 2389 FSL & 2569 FWL, Sec. 15, T40N, R18W NMPM  
**License Number:** API: 050830669700 **Region:** Colorado  
**Spud Date:** 08/23/2012 **Drilling Completed:** 10/01/2012  
**Surface Coordinates:** SHL: 1796 FNL & 1915 FEL, Sec. 14, T37N, R18W NMPM

**Bottom Hole Coordinates:**

**Ground Elevation (ft):** 6661' **K.B. Elevation (ft):** 6686.5'  
**Logged Interval (ft):** 5000' **To:** 8200' **Total Depth (ft):** 8200'  
**Formation:** Leadville Limestone Carbonate  
**Type of Drilling Fluid:** FRESH WATER

Printed by MUD.LOG from WellSight Systems 1-800-447-1534 [www.WellSight.com](http://www.WellSight.com)

**OPERATOR**

**Company:** KINDER MORGAN CO2 CO LP  
**Address:** 17801 HWY 481  
Colorado

**GEOLOGIST**

**Name:** Leon Walters/ Anna Negrete  
**Company:** ABOVE ENTERPRISE  
**Address:** 510 Old Lubbock Hwy  
Snyder Tx 79549

**Cores**

DSTs

Comments

Patterson UTI 710

ROCK TYPES

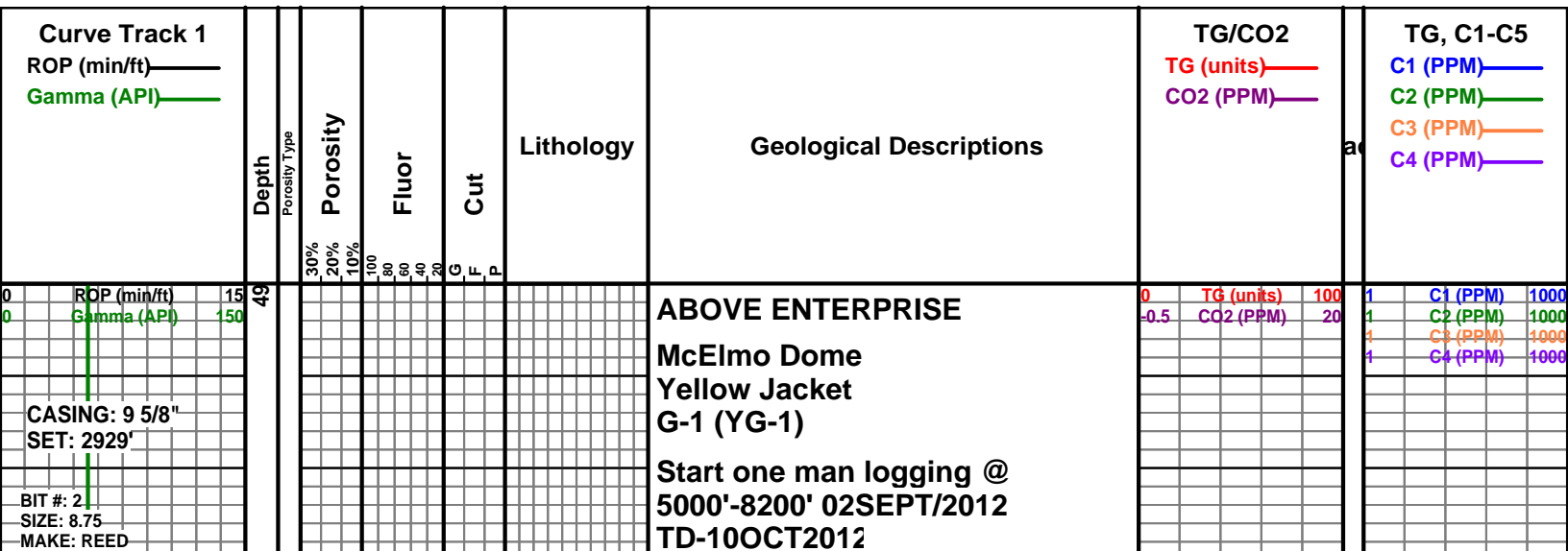
Anhy	Clyst	Gyp	Mrlst	Shgy
Bent	Coal	Igne	Salt	Sltst
Brec	Congl	Lmst	Shale	Ss
Cht	Dol	Meta	Schol	Till

ACCESSORIES

<b>MINERAL</b>	Gyp	<b>FOSSIL</b>	Ostra	Sltstrg
Anhy	Hvymin	Algae	Pelec	Ssstrg
Arggrn	Kaol	Amph	Pellet	<b>TEXTURE</b>
Arg	Marl	Belm	Pisolite	Boundst
Bent	Minxl	Bioclst	Plant	Chalky
Bit	Nodule	Brach	Strom	Cryxln
Brecfrag	Phos	Bryozoa	<b>STRINGER</b>	Earthy
Calc	Pyr	Cephal	Anhy	Finexln
Carb	Salt	Coral	Arg	Grainst
Chtdk	Sandy	Crin	Bent	Lithogr
Chtlt	Silt	Echin	Coal	Microxln
Dol	Sil	Fish	Dol	Mudst
Feldspar	Sulphur	Foram	Gyp	Packst
Ferrpel	Tuff	Fossil	Ls	Wackest
Ferr		Gastro	Mrst	
Glau		Oolite		

OTHER SYMBOLS

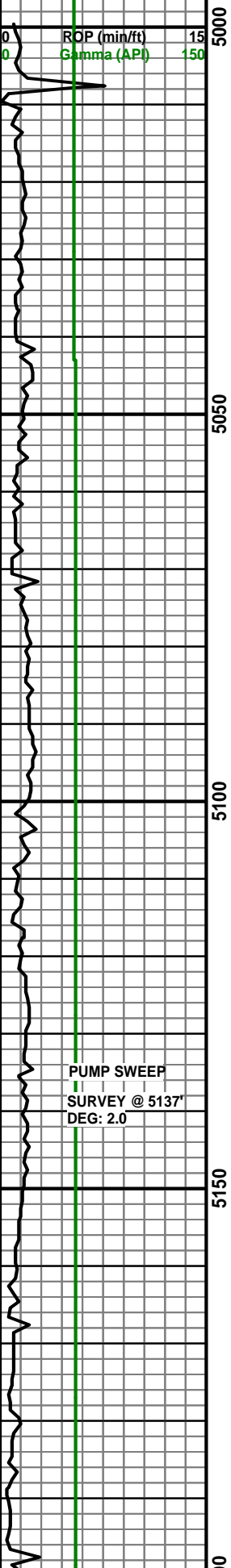
<b>POROSITY</b>	Vuggy	<b>ROUNDING</b>	Spotted	<b>EVENT</b>
Earthy		Rounded	Ques	Rft
Fenest	<b>SORTING</b>	Subrnd	Dead	Sidewall
Fracture	Well	Subang	<b>INTERVAL</b>	
Inter	Moderate	Angular	Core	
Moldic	Poor	<b>OIL SHOW</b>	Dst	
Organic		Even		
Pinpoint				



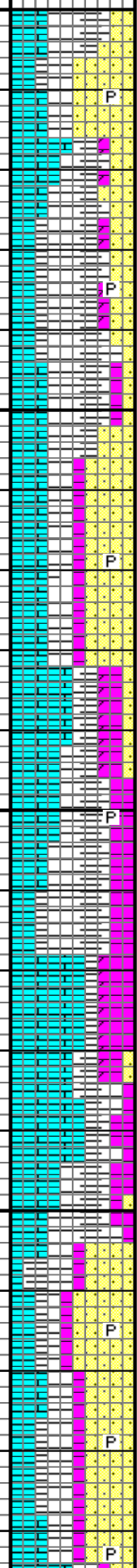
TYPE: Q507FX  
 SERIAL #: 7134510  
 JETS: 7X16  
 DEPTH IN: 3000'

# 7" CSNG @ 8045'

SURVEY @ 4692'  
 DEG: .75



5000  
5050  
5100  
5150  
0



LS: WH-OFFFWH-LTGY-GY, SFT-FRM, MXLN-FXLN  
 SMTH-CPTXLN IP TXT/SNDY-SMTH, ASSOC: PYR

SH: BRN-RDBRN, LTGY-GY, SFT-MDHD, BLKY-SBLKY, SL  
 FISS IP, SLTY, DULL MOD CALC, ASSOC: PYR

SS: LTGY-TN-OFFFWH IP, FRIA-CONS, MOD HD IP, VFN-FN  
 GRN, SBRND-SBANG, MOD CALC CMT

TR: DOL

LS: WH-OFFFWH-LTGY-GY-MARL, SFT-FRM, MXLN-FXLN  
 SMTH-CPTXLN IP TXT/SNDY-SMTH,

SH: BRN-RDBRN, LTGY-GY, SFT-MDHD, BLKY-SBLKY, SL  
 FISS IP, SLTY, DULL MOD CALC, ASSOC: PYR

DOL: WH-OFFFWH-LTGY-GY, HD-FRM, MXLN-FXLN  
 SMTH-CPTXLN IP TXT/SNDY-SMTH

SS: LTGY-TN-OFFFWH IP, FRIA-CONS, MOD HD IP, VFN-FN  
 GRN, SBRND-SBANG, MOD CALC CMT

LS: WH-OFFFWH-LTGY-GY-MARL, SFT-FRM, MXLN-FXLN  
 SMTH-CPTXLN IP TXT/SNDY-SMTH,

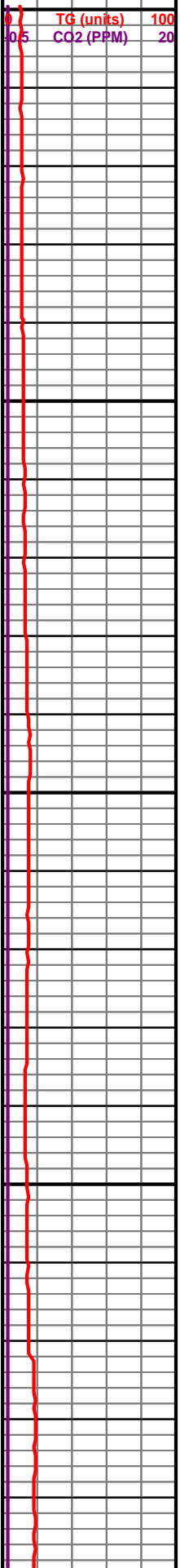
SH: BRN-RDBRN, LTGY-GY, SFT-MDHD, BLKY-SBLKY, SL  
 FISS IP, SLTY, DULL MOD CALC,

DOL: WH-OFFFWH-LTGY-GY, HD-FRM, MXLN-FXLN  
 SMTH-CPTXLN IP TXT/SNDY-SMTH

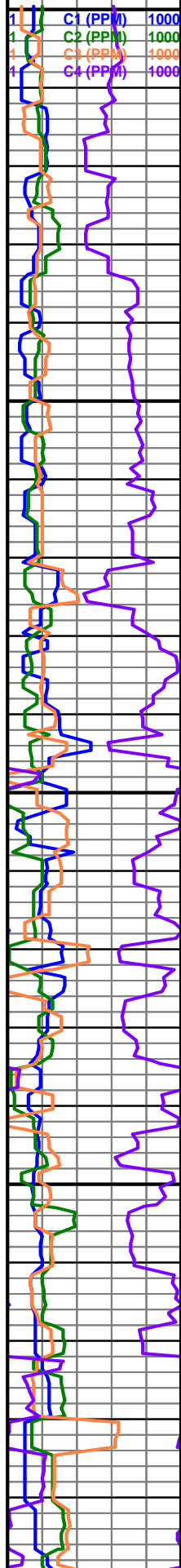
LS: WH-OFFFWH-LTGY-GY-MARL, SFT-FRM, MXLN-FXLN  
 SMTH-CPTXLN IP TXT/SNDY-SMTH,

SH: BRN-RDBRN, LTGY-GY, SFT-MDHD, BLKY-SBLKY, SL  
 FISS IP, SLTY, DULL MOD CALC, ASSOC: PYR

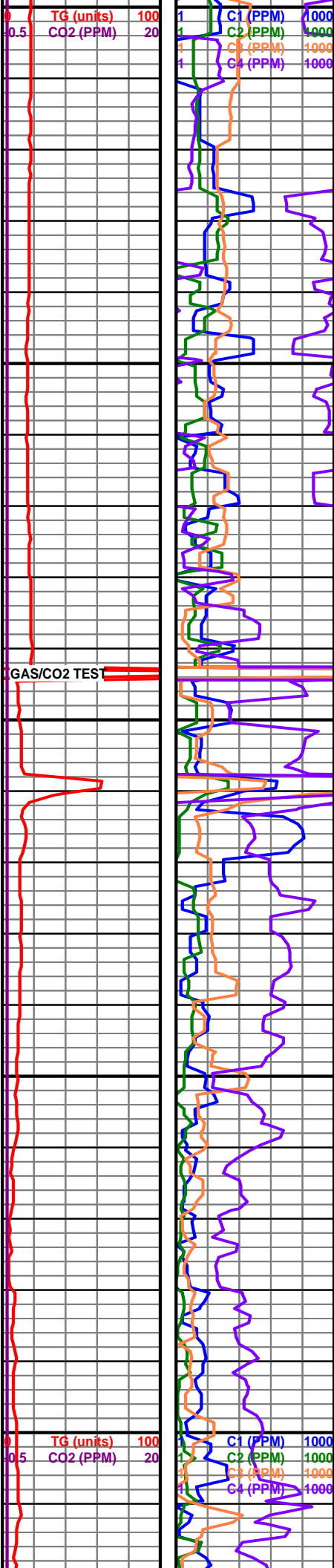
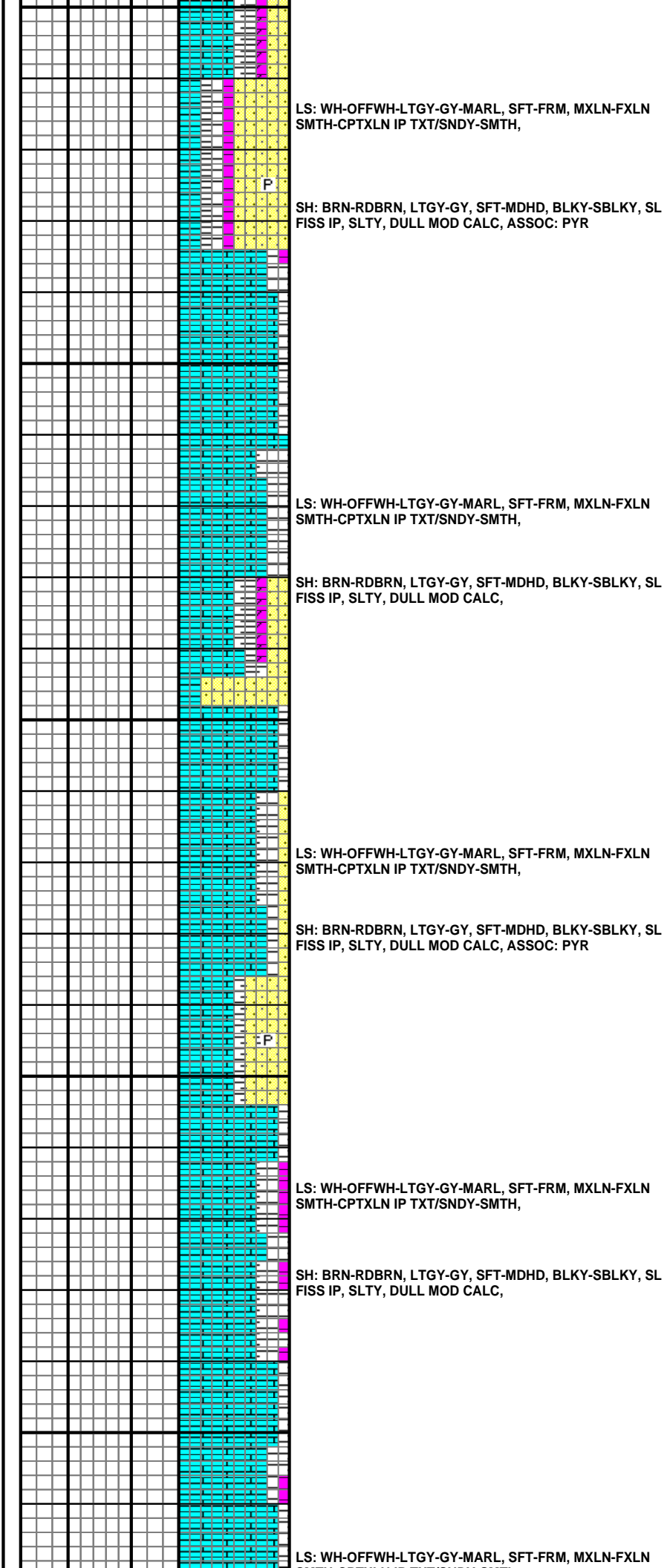
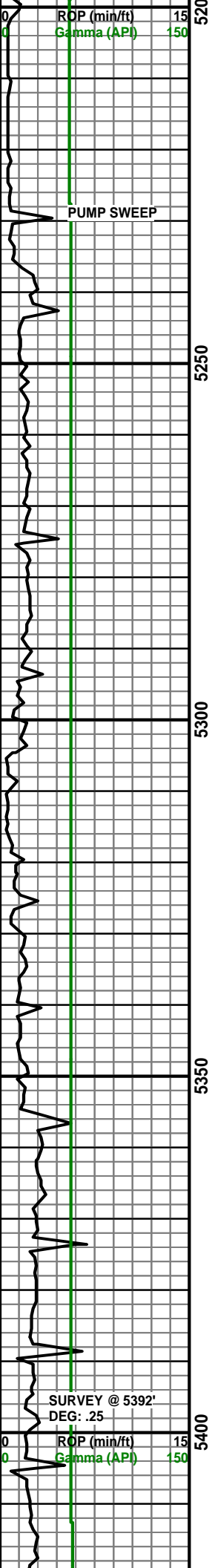
TG (units) 100  
 CO2 (PPM) 20

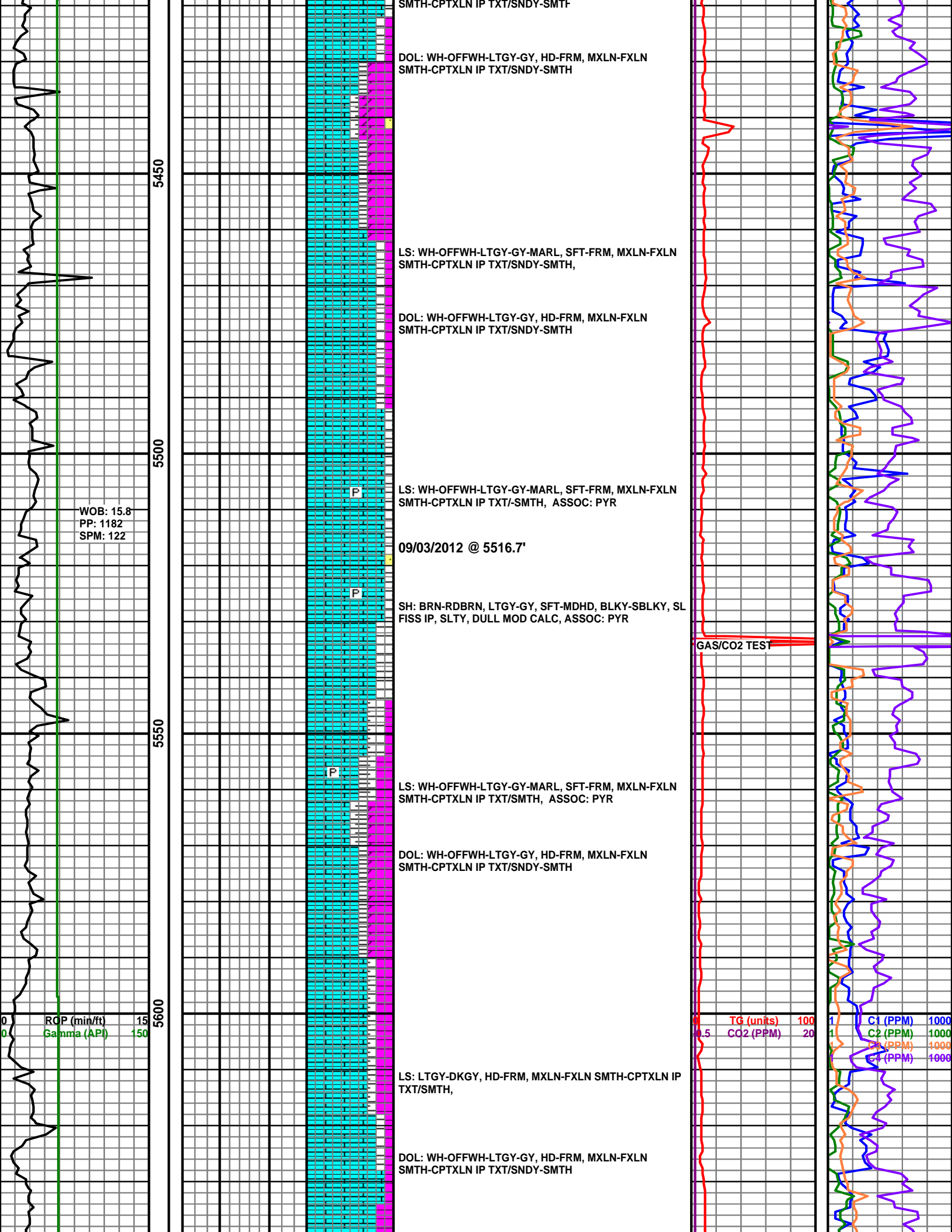


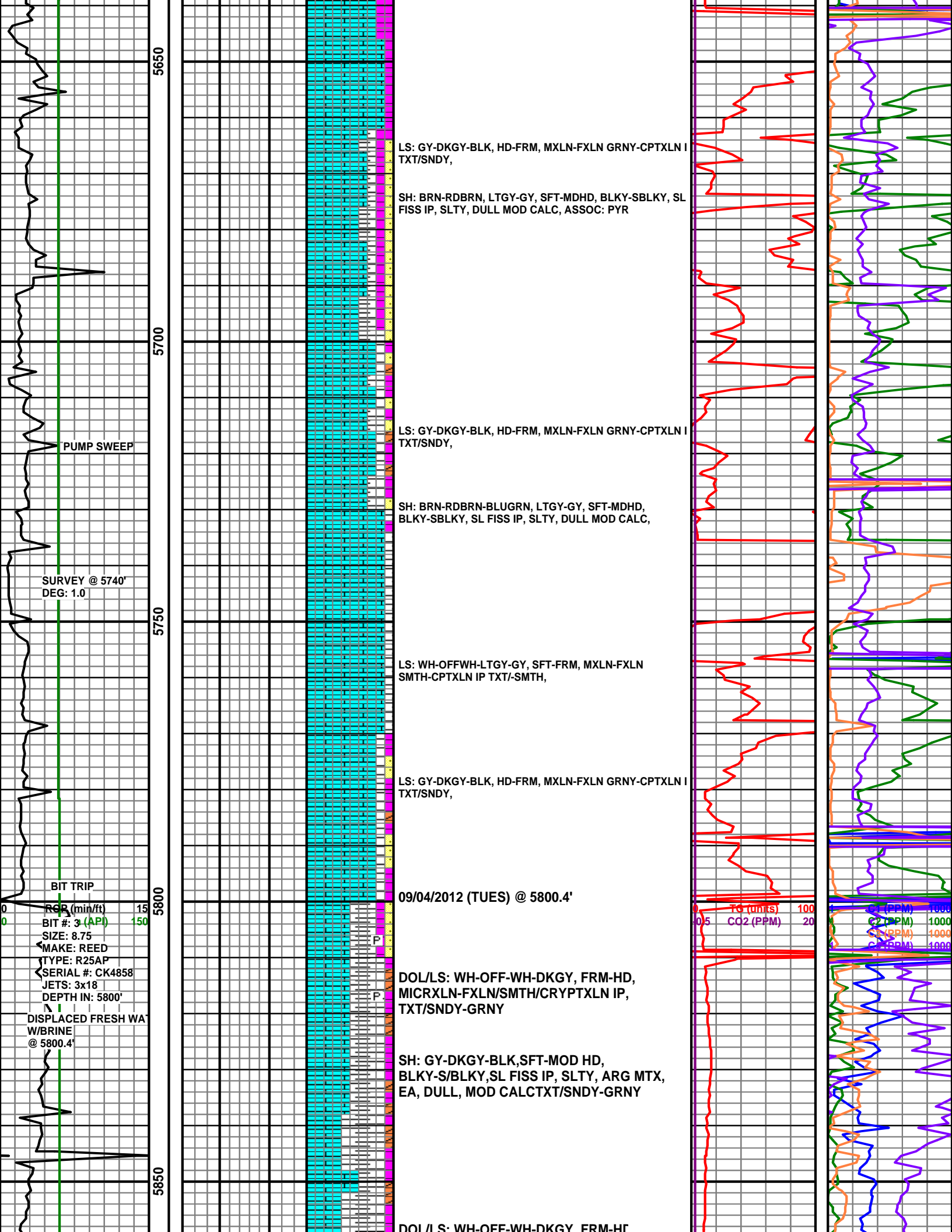
C1 (PPM) 1000  
 C2 (PPM) 1000  
 C3 (PPM) 1000  
 C4 (PPM) 1000



PUMP SWEEP  
 SURVEY @ 5137'  
 DEG: 2.0







5650  
5700  
5750  
5800  
5850

LS: GY-DKGY-BLK, HD-FRM, MXLN-FXLN GRNY-CPTXLN I  
TXT/SNDY,

SH: BRN-RDBRN, LTGY-GY, SFT-MDHD, BLKY-SBLKY, SL  
FISS IP, SLTY, DULL MOD CALC, ASSOC: PYR

PUMP SWEEP

LS: GY-DKGY-BLK, HD-FRM, MXLN-FXLN GRNY-CPTXLN I  
TXT/SNDY,

SH: BRN-RDBRN-BLUGRN, LTGY-GY, SFT-MDHD,  
BLKY-SBLKY, SL FISS IP, SLTY, DULL MOD CALC,

SURVEY @ 5740'  
DEG: 1.0

LS: WH-OFFWH-LTGY-GY, SFT-FRM, MXLN-FXLN  
SMTH-CPTXLN IP TXT-SMTH,

LS: GY-DKGY-BLK, HD-FRM, MXLN-FXLN GRNY-CPTXLN I  
TXT/SNDY,

09/04/2012 (TUES) @ 5800.4'

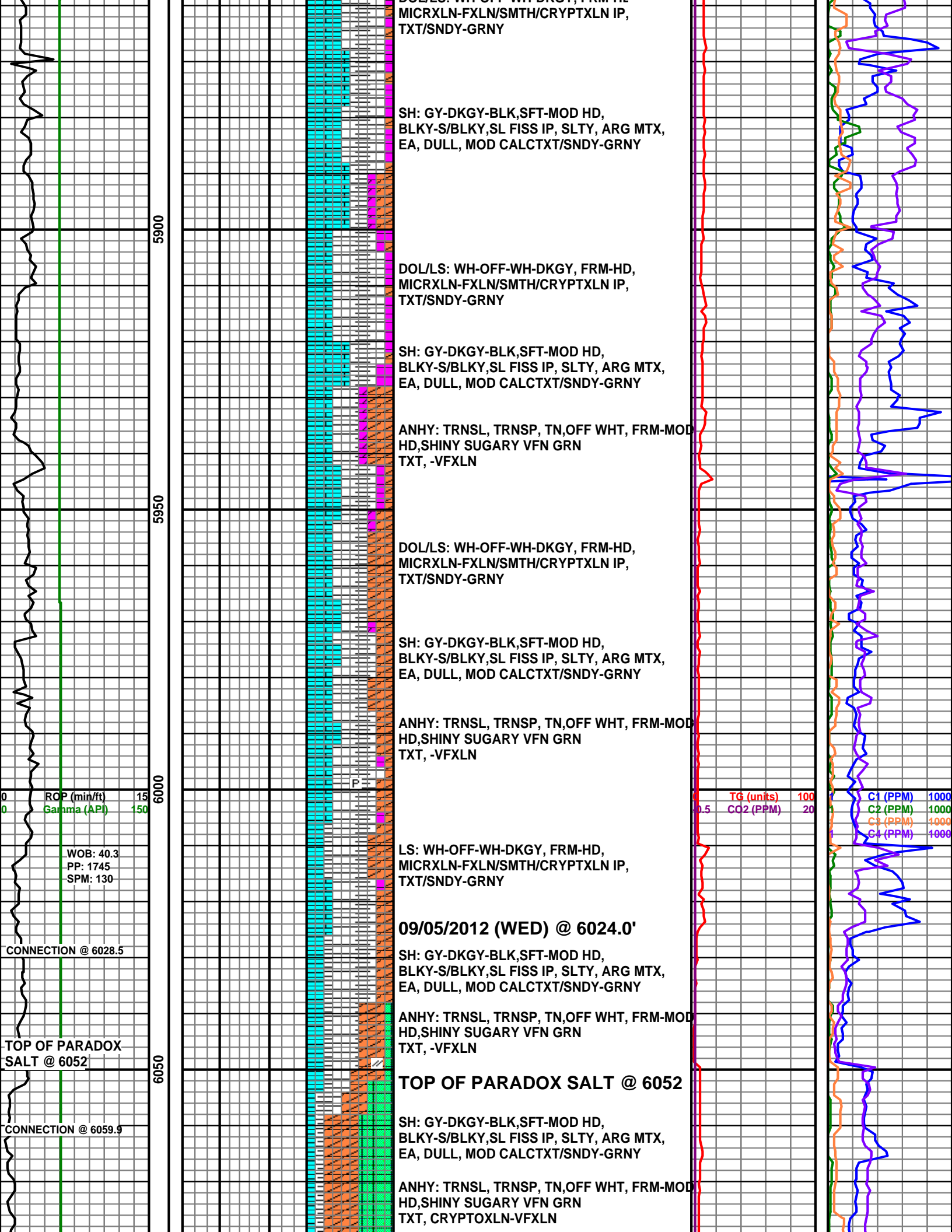
DOL/LS: WH-OFF-WH-DKGY, FRM-HD,  
MICRXLN-FXLN/SMTH/CRYPTXLN IP,  
TXT/SNDY-GRNY

SH: GY-DKGY-BLK, SFT-MOD HD,  
BLKY-S/BLKY, SL FISS IP, SLTY, ARG MTX,  
EA, DULL, MOD CALCTXT/SNDY-GRNY

DOI / LS: WH-OFF-WH-DKGY FRM-HF

BIT TRIP  
RGR (min/ft) 15  
BIT #: 3 (API) 150  
SIZE: 8.75  
MAKE: REED  
TYPE: R25AP  
SERIAL #: CK4858  
JETS: 3x18  
DEPTH IN: 5800'  
DISPLACED FRESH WA  
W/BRINE  
@ 5800.4'

TO (units) 100  
CO2 (PPM) 20  
C1 (PPM) 1000  
C2 (PPM) 1000  
C3 (PPM) 1000  
C4 (PPM) 1000



DOL/LS: WH-OFF-WH-DKGY, FRM-HD, MICRXLN-FXLN/SMTH/CRYPTXLN IP, TXT/SNDY-GRNY

SH: GY-DKGY-BLK, SFT-MOD HD, BLKY-S/BLKY, SL FISS IP, SLTY, ARG MTX, EA, DULL, MOD CALCTXT/SNDY-GRNY

DOL/LS: WH-OFF-WH-DKGY, FRM-HD, MICRXLN-FXLN/SMTH/CRYPTXLN IP, TXT/SNDY-GRNY

SH: GY-DKGY-BLK, SFT-MOD HD, BLKY-S/BLKY, SL FISS IP, SLTY, ARG MTX, EA, DULL, MOD CALCTXT/SNDY-GRNY

ANHY: TRNSL, TRNSP, TN, OFF WHT, FRM-MOD HD, SHINY SUGARY VFN GRN TXT, -VFXLN

DOL/LS: WH-OFF-WH-DKGY, FRM-HD, MICRXLN-FXLN/SMTH/CRYPTXLN IP, TXT/SNDY-GRNY

SH: GY-DKGY-BLK, SFT-MOD HD, BLKY-S/BLKY, SL FISS IP, SLTY, ARG MTX, EA, DULL, MOD CALCTXT/SNDY-GRNY

ANHY: TRNSL, TRNSP, TN, OFF WHT, FRM-MOD HD, SHINY SUGARY VFN GRN TXT, -VFXLN

LS: WH-OFF-WH-DKGY, FRM-HD, MICRXLN-FXLN/SMTH/CRYPTXLN IP, TXT/SNDY-GRNY

09/05/2012 (WED) @ 6024.0'

SH: GY-DKGY-BLK, SFT-MOD HD, BLKY-S/BLKY, SL FISS IP, SLTY, ARG MTX, EA, DULL, MOD CALCTXT/SNDY-GRNY

ANHY: TRNSL, TRNSP, TN, OFF WHT, FRM-MOD HD, SHINY SUGARY VFN GRN TXT, -VFXLN

TOP OF PARADOX SALT @ 6052

SH: GY-DKGY-BLK, SFT-MOD HD, BLKY-S/BLKY, SL FISS IP, SLTY, ARG MTX, EA, DULL, MOD CALCTXT/SNDY-GRNY

ANHY: TRNSL, TRNSP, TN, OFF WHT, FRM-MOD HD, SHINY SUGARY VFN GRN TXT, CRYPTOXLN-VFXLN

ROP (min/ft) 15  
Gamma (API) 150

TG (units) 100  
CO2 (PPM) 20

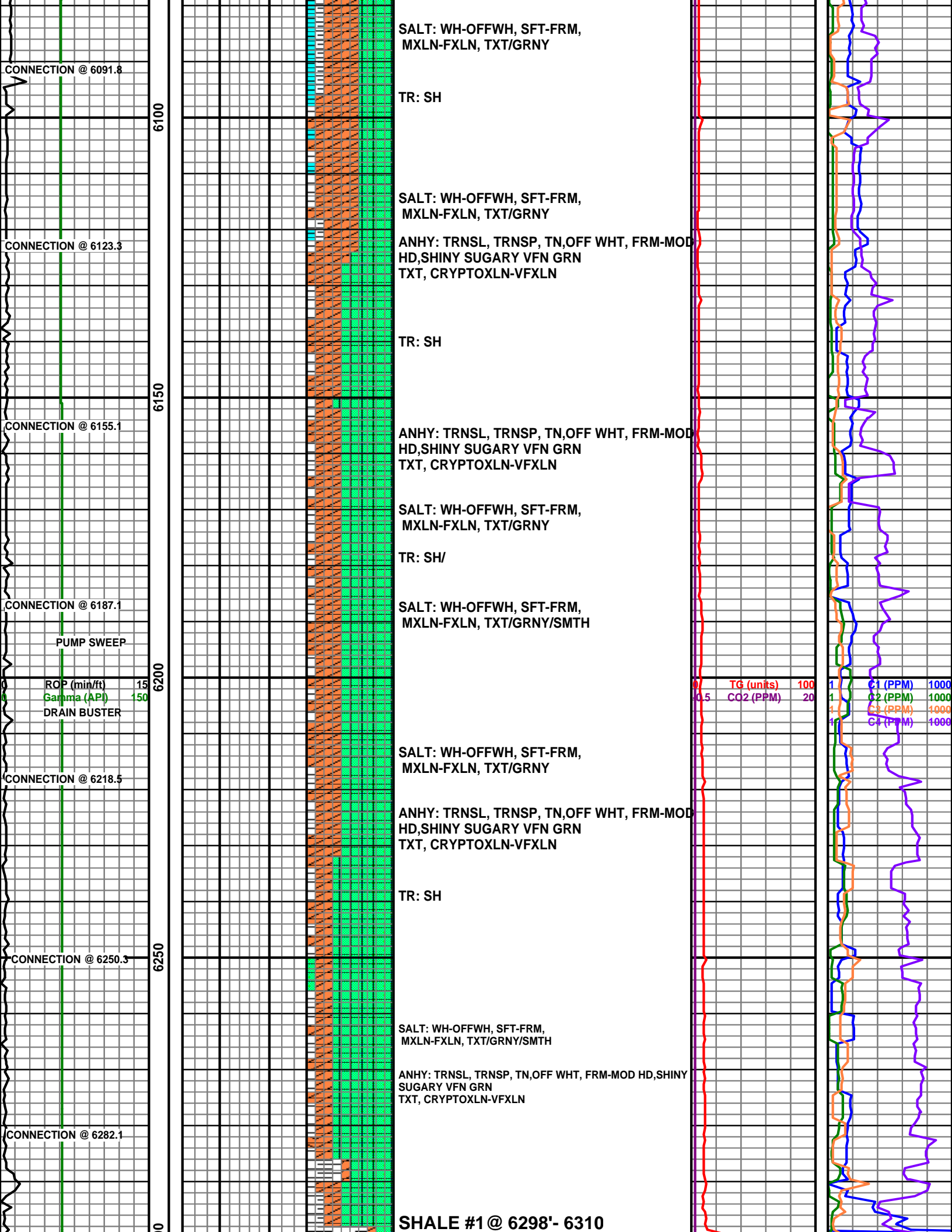
C1 (PPM) 1000  
C2 (PPM) 1000  
C3 (PPM) 1000  
C4 (PPM) 1000

WOB: 40.3  
PP: 1745  
SPM: 130

CONNECTION @ 6028.5

TOP OF PARADOX SALT @ 6052

CONNECTION @ 6059.9



SALT: WH-OFFWH, SFT-FRM, MXLN-FXLN, TXT/GRNY

TR: SH

SALT: WH-OFFWH, SFT-FRM, MXLN-FXLN, TXT/GRNY

ANHY: TRNSL, TRNSP, TN,OFF WHT, FRM-MOD HD,SHINY SUGARY VFN GRN TXT, CRYPTOXLN-VFXLN

TR: SH

ANHY: TRNSL, TRNSP, TN,OFF WHT, FRM-MOD HD,SHINY SUGARY VFN GRN TXT, CRYPTOXLN-VFXLN

SALT: WH-OFFWH, SFT-FRM, MXLN-FXLN, TXT/GRNY

TR: SH/

SALT: WH-OFFWH, SFT-FRM, MXLN-FXLN, TXT/GRNY/SMTH

SALT: WH-OFFWH, SFT-FRM, MXLN-FXLN, TXT/GRNY

ANHY: TRNSL, TRNSP, TN,OFF WHT, FRM-MOD HD,SHINY SUGARY VFN GRN TXT, CRYPTOXLN-VFXLN

TR: SH

SALT: WH-OFFWH, SFT-FRM, MXLN-FXLN, TXT/GRNY/SMTH

ANHY: TRNSL, TRNSP, TN,OFF WHT, FRM-MOD HD,SHINY SUGARY VFN GRN TXT, CRYPTOXLN-VFXLN

SHALE #1 @ 6298' - 6310'

CONNECTION @ 6091.8

CONNECTION @ 6123.3

CONNECTION @ 6155.1

CONNECTION @ 6187.1

CONNECTION @ 6218.5

CONNECTION @ 6250.3

CONNECTION @ 6282.1

PUMP SWEEP

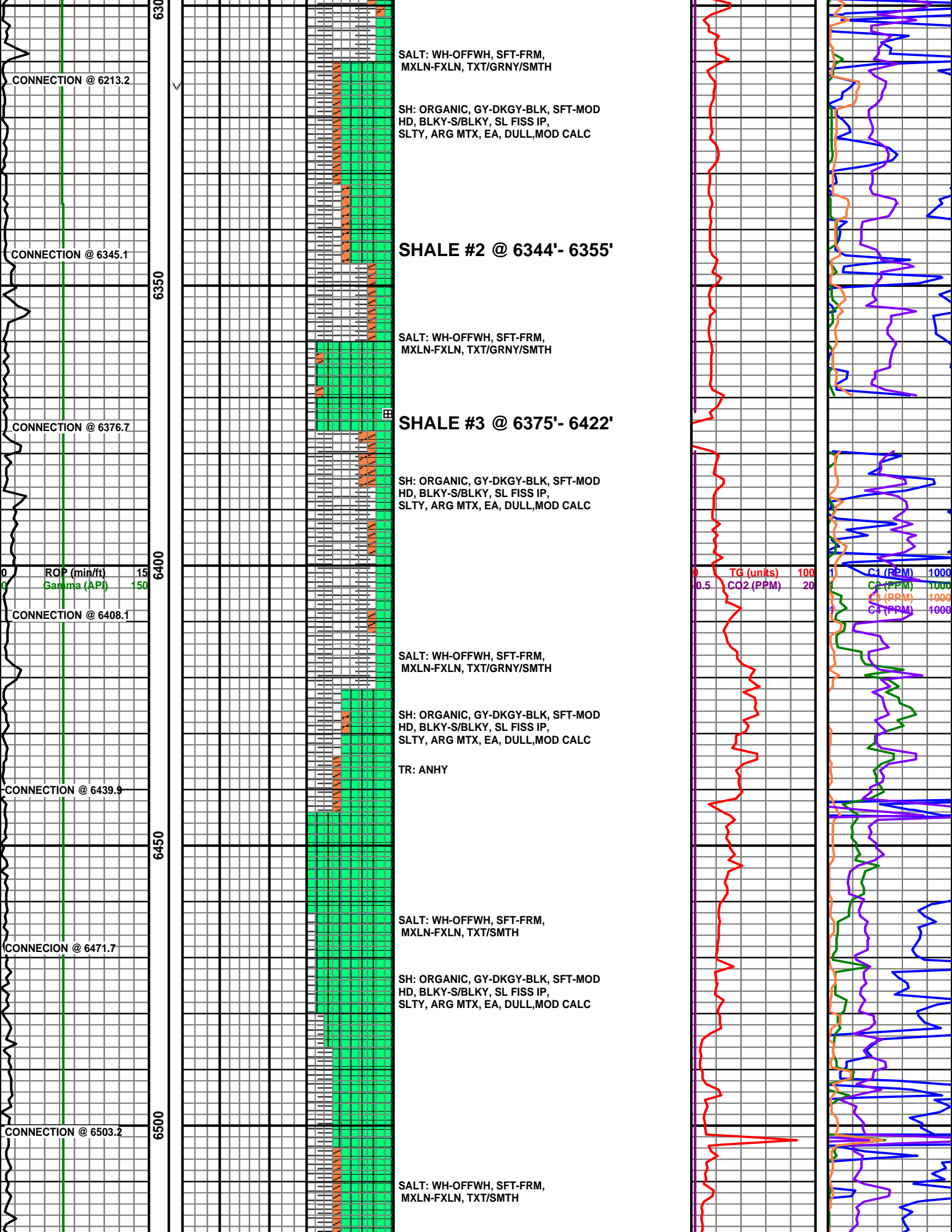
ROP (min/ft) 15

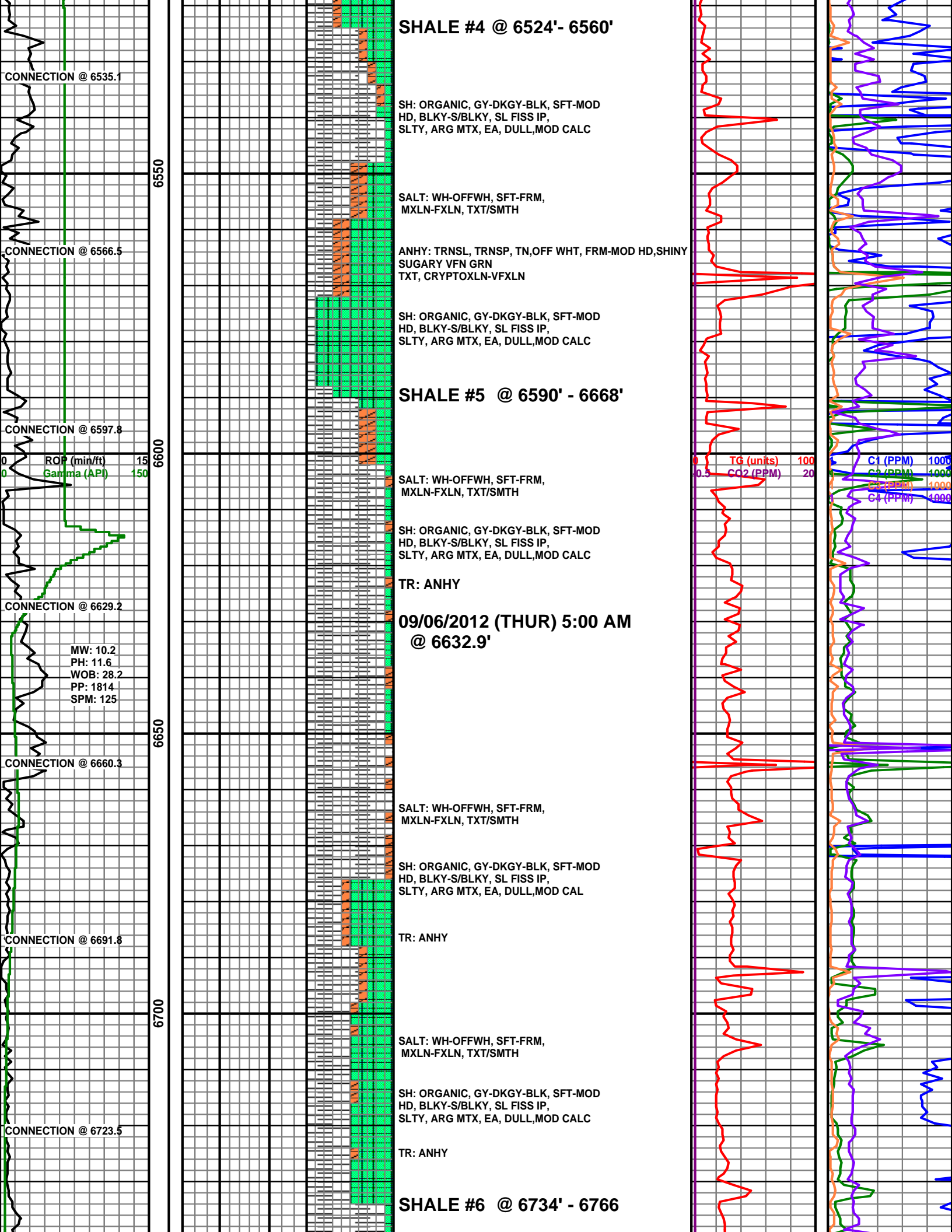
Gamma (API) 150

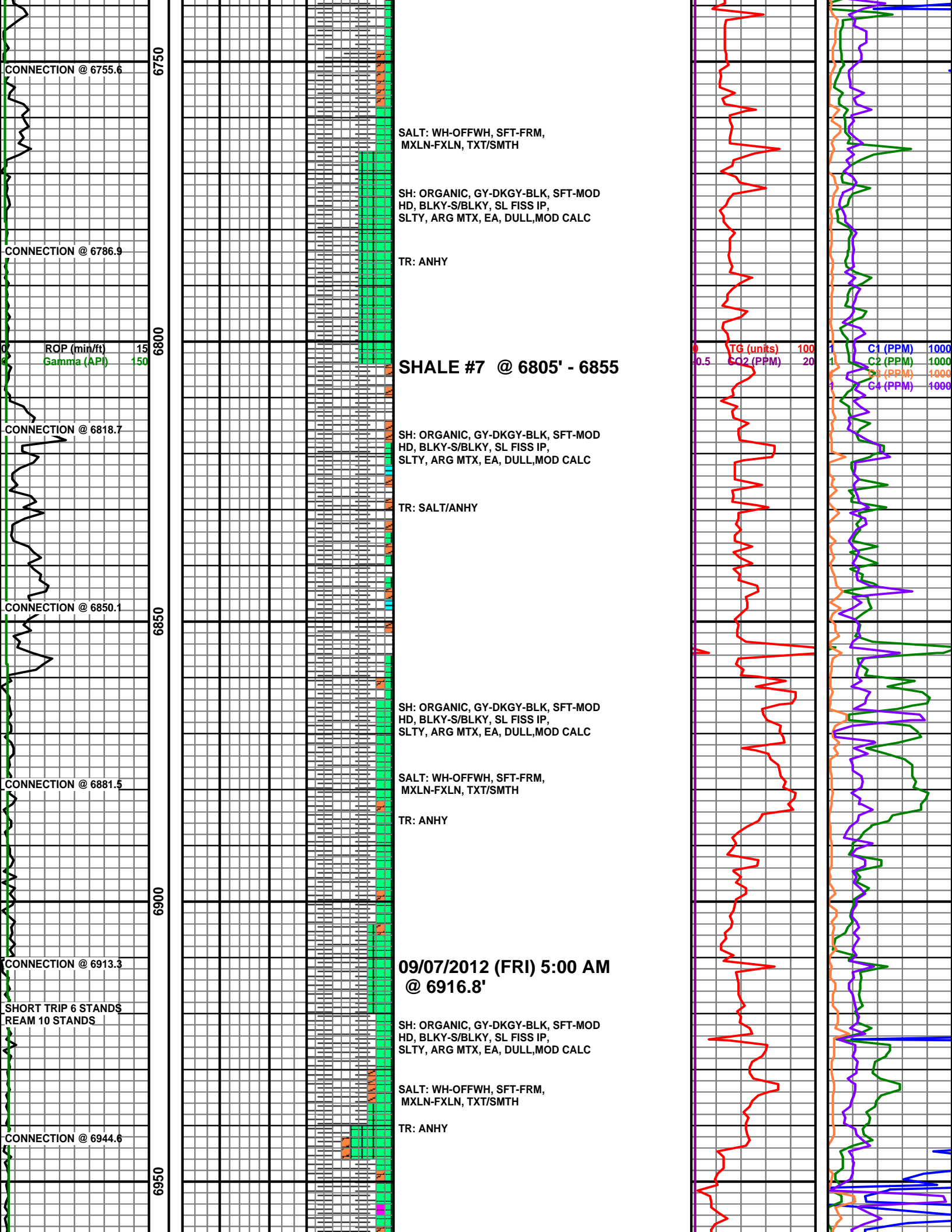
DRAIN BUSTER

TG (units) 100  
CO2 (PPM) 20

C1 (PPM) 1000  
C2 (PPM) 1000  
C3 (PPM) 1000  
C4 (PPM) 1000







6750  
6800  
6850  
6900  
6950

CONNECTION @ 6755.6

CONNECTION @ 6786.9

ROP (min/ft) 15  
Gamma (API) 150

CONNECTION @ 6818.7

CONNECTION @ 6850.1

CONNECTION @ 6881.5

CONNECTION @ 6913.3

SHORT TRIP 6 STANDS  
REAM 10 STANDS

CONNECTION @ 6944.6

SALT: WH-OFFWH, SFT-FRM,  
MXLN-FXLN, TXT/SMTH

SH: ORGANIC, GY-DKGY-BLK, SFT-MOD  
HD, BLKY-S/BLKY, SL FISS IP,  
SLTY, ARG MTX, EA, DULL,MOD CALC

TR: ANHY

**SHALE #7 @ 6805' - 6855**

SH: ORGANIC, GY-DKGY-BLK, SFT-MOD  
HD, BLKY-S/BLKY, SL FISS IP,  
SLTY, ARG MTX, EA, DULL,MOD CALC

TR: SALT/ANHY

SH: ORGANIC, GY-DKGY-BLK, SFT-MOD  
HD, BLKY-S/BLKY, SL FISS IP,  
SLTY, ARG MTX, EA, DULL,MOD CALC

SALT: WH-OFFWH, SFT-FRM,  
MXLN-FXLN, TXT/SMTH

TR: ANHY

**09/07/2012 (FRI) 5:00 AM  
@ 6916.8'**

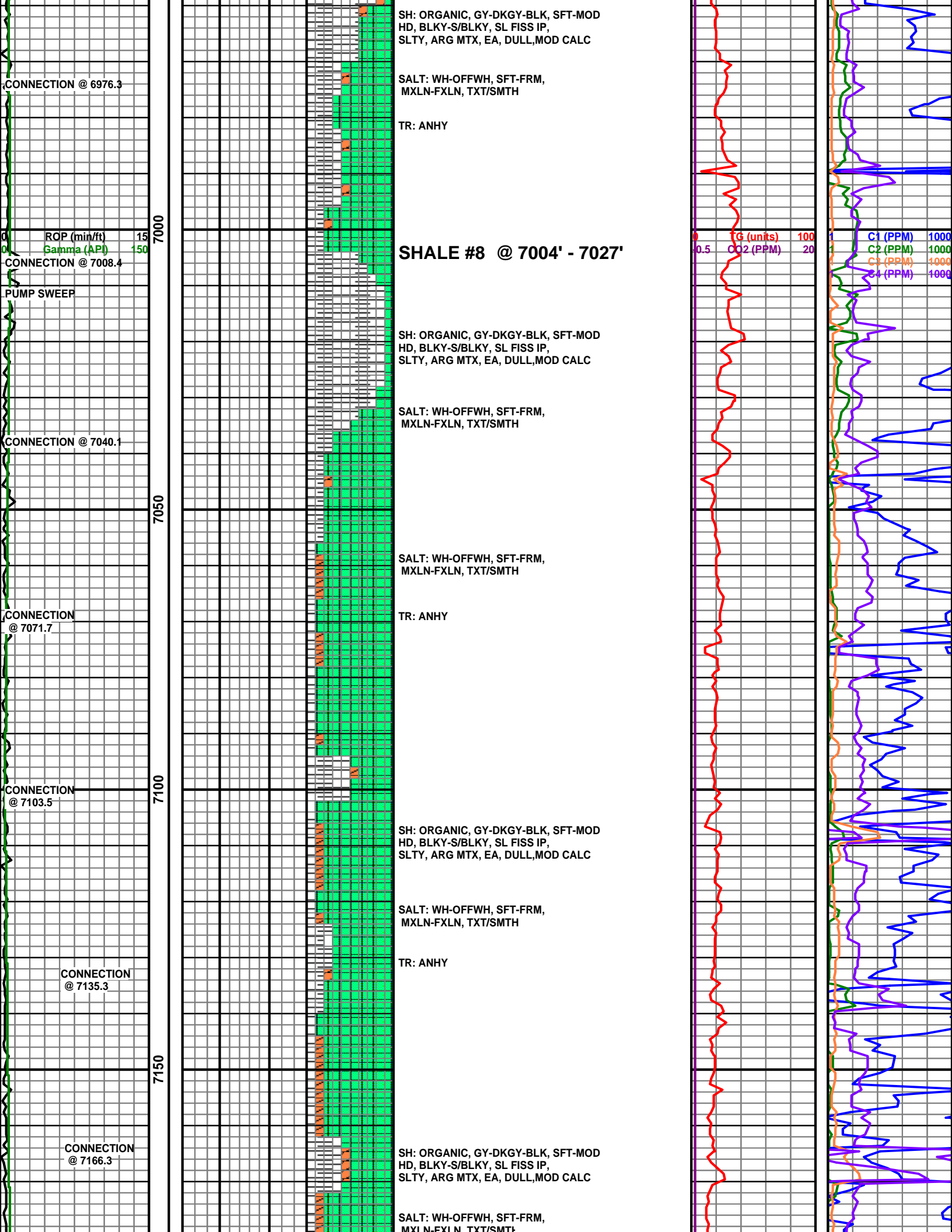
SH: ORGANIC, GY-DKGY-BLK, SFT-MOD  
HD, BLKY-S/BLKY, SL FISS IP,  
SLTY, ARG MTX, EA, DULL,MOD CALC

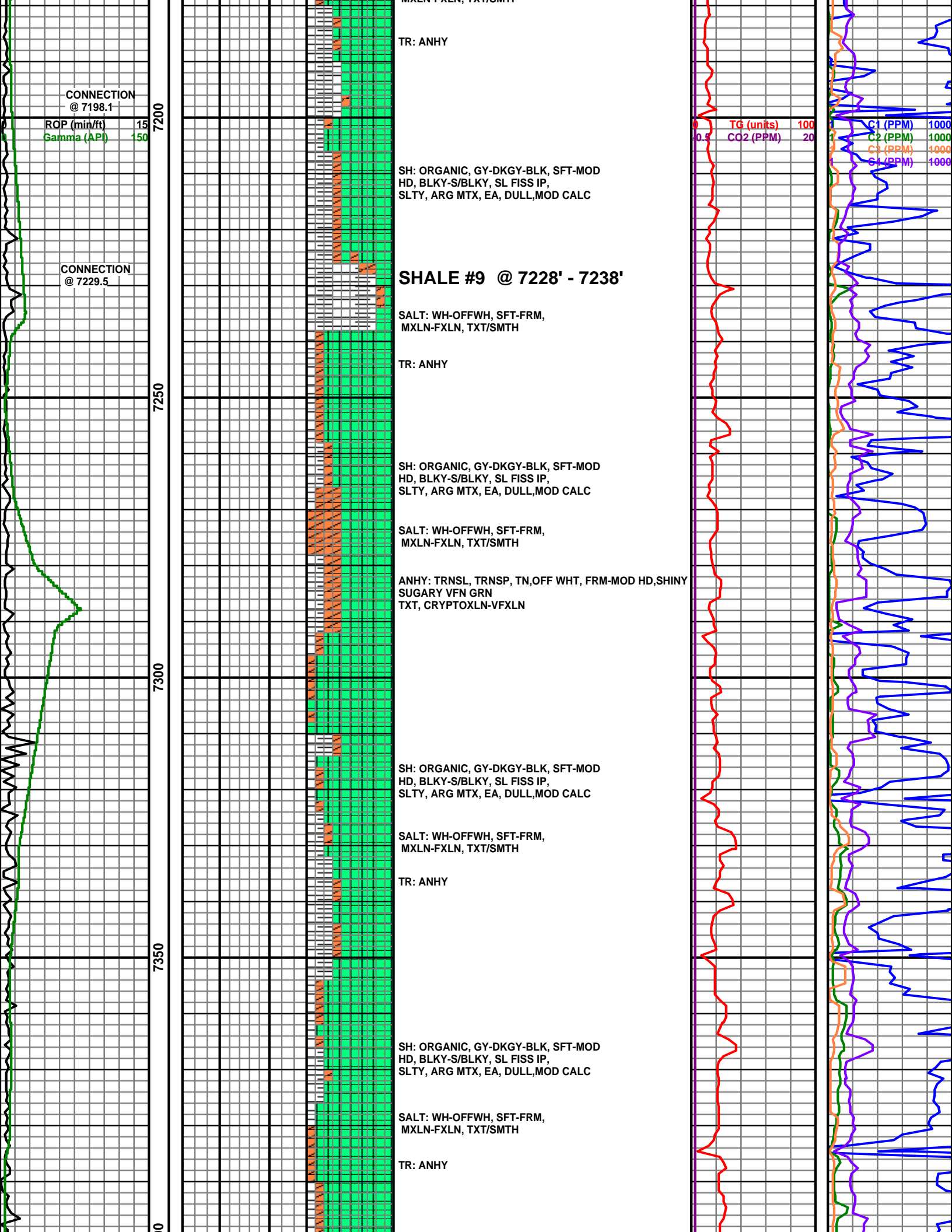
SALT: WH-OFFWH, SFT-FRM,  
MXLN-FXLN, TXT/SMTH

TR: ANHY

TG (units) 100  
C2 (PPM) 20

C1 (PPM) 1000  
C2 (PPM) 1000  
C3 (PPM) 1000  
C4 (PPM) 1000





CONNECTION  
@ 7198.1

ROP (min/ft) 15  
Gamma (API) 150

CONNECTION  
@ 7229.5

TR: ANHY

SH: ORGANIC, GY-DKGY-BLK, SFT-MOD  
HD, BLKY-S/BLKY, SL FISS IP,  
SLTY, ARG MTX, EA, DULL,MOD CALC

**SHALE #9 @ 7228' - 7238'**

SALT: WH-OFFWH, SFT-FRM,  
MXLN-FXLN, TXT/SMTH

TR: ANHY

SH: ORGANIC, GY-DKGY-BLK, SFT-MOD  
HD, BLKY-S/BLKY, SL FISS IP,  
SLTY, ARG MTX, EA, DULL,MOD CALC

SALT: WH-OFFWH, SFT-FRM,  
MXLN-FXLN, TXT/SMTH

ANHY: TRNSL, TRNSP, TN,OFF WHT, FRM-MOD HD,SHINY  
SUGARY VFN GRN  
TXT, CRYPTOXLN-VFXLN

SH: ORGANIC, GY-DKGY-BLK, SFT-MOD  
HD, BLKY-S/BLKY, SL FISS IP,  
SLTY, ARG MTX, EA, DULL,MOD CALC

SALT: WH-OFFWH, SFT-FRM,  
MXLN-FXLN, TXT/SMTH

TR: ANHY

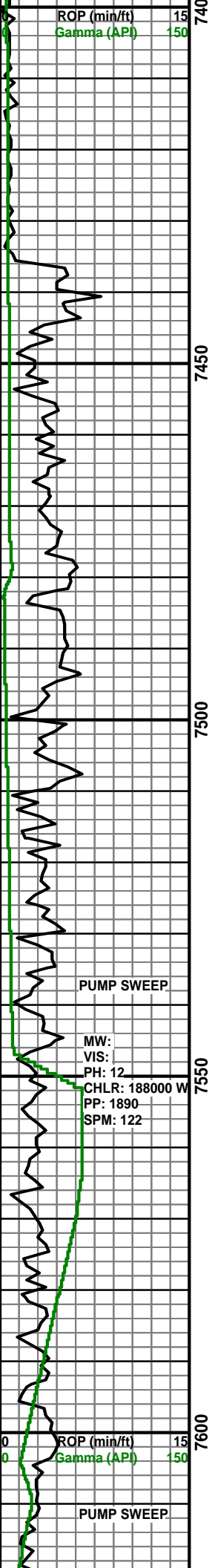
SH: ORGANIC, GY-DKGY-BLK, SFT-MOD  
HD, BLKY-S/BLKY, SL FISS IP,  
SLTY, ARG MTX, EA, DULL,MOD CALC

SALT: WH-OFFWH, SFT-FRM,  
MXLN-FXLN, TXT/SMTH

TR: ANHY

TG (units) 100  
CO2 (PPM) 20

C1 (PPM) 1000  
C2 (PPM) 1000  
C3 (PPM) 1000  
C4 (PPM) 1000



SALT: WH-OFFWH, SFT-FRM,  
MXLN-FXLN, TXT/SMTH

TR: SH/ANHY

**BASE OF PARADOX SALT  
@ 7436'**

LS: WH-OFF-WH-DKGY, FRM-HD,  
MICRXLN-FXLN/SMTH/  
CRYPTXLN IP, SLTY  
TXT/SNDY-GRNY

SH: GY-DKGY-BLK, CARB, SFT-MOD  
HD, BLKY-S/BLKY, SL FISS IP,  
BLK SLTY, ARG MTX, EA, DULL,  
MOD CALC

DOL/LS: GY-DKGY, FRM-HD, MICRXLN  
-FXLN/SMTH/CRYPTXLN IP, SLTY  
TXT/SNDY-GRNY

TR: SALT

LS: WH-OFF-WH-DKGY, FRM-HD,  
MICRXLN-FXLN/SMTH/  
CRYPTXLN IP, SLTY  
TXT/SNDY-GRNY

SH: GY-DKGY-BLK, CARB, SFT-MOD  
HD, BLKY-S/BLKY, SL FISS IP,  
BLK SLTY, ARG MTX, EA, DULL,  
MOD CALC

DOL/LS: GY-DKGY, FRM-HD, MICRXLN FXLN/  
SMTH/CRYPTXLN IP, SLTYTXT/SNDY-GRNY

TR: SALT

**09/08/2012 (SAT) 5:00 AM  
@ 7551.5**

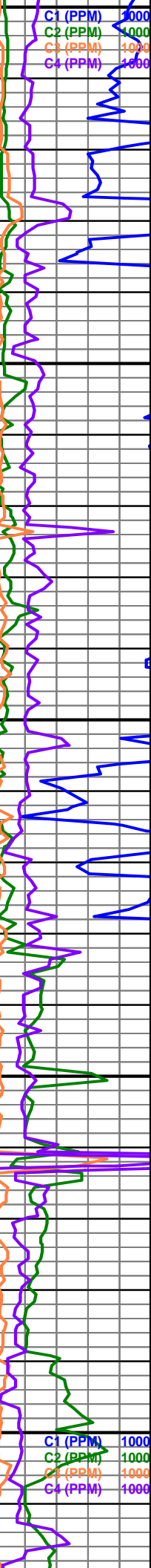
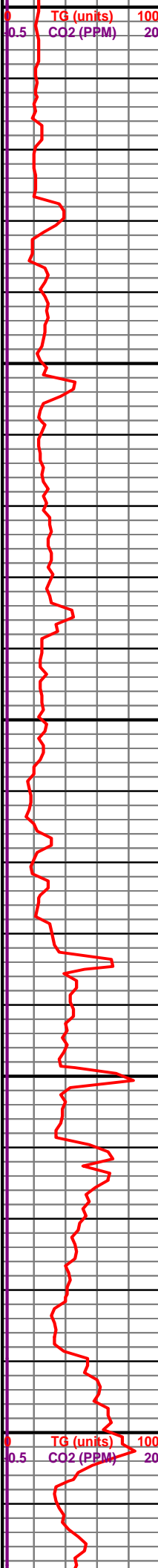
LS: WH-OFF-WH-DKGY, FRM-HD,  
MICRXLN-FXLN/SMTH/CRYPTXLN IP, SLTY  
TXT/SNDY-GRNY

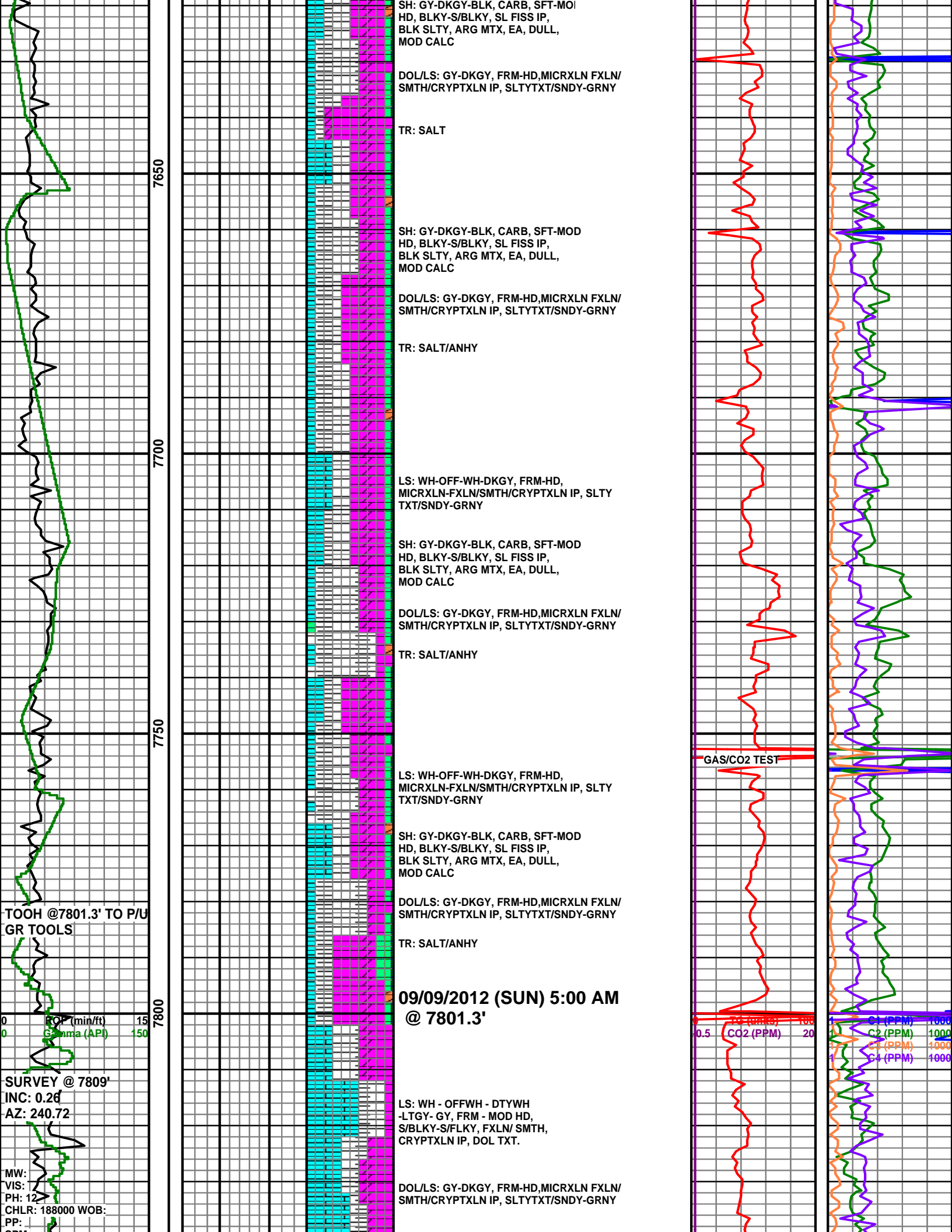
SH: GY-DKGY-BLK, CARB, SFT-MOD  
HD, BLKY-S/BLKY, SL FISS IP,  
BLK SLTY, ARG MTX, EA, DULL,  
MOD CALC

DOL/LS: GY-DKGY, FRM-HD, MICRXLN FXLN/  
SMTH/CRYPTXLN IP, SLTYTXT/SNDY-GRNY

TR: SALT

LS: WH-OFF-WH-DKGY, FRM-HD,  
MICRXLN-FXLN/SMTH/CRYPTXLN IP, SLTY  
TXT/SNDY-GRNY





SH: GY-DKGY-BLK, CARB, SFT-MOI  
 HD, BLKY-S/BLKY, SL FISS IP,  
 BLK SLTY, ARG MTX, EA, DULL,  
 MOD CALC

DOL/LS: GY-DKGY, FRM-HD, MICRXLN FXLN/  
 SMTH/CRYPTXLN IP, SLTYTXT/SNDY-GRNY

TR: SALT

SH: GY-DKGY-BLK, CARB, SFT-MOD  
 HD, BLKY-S/BLKY, SL FISS IP,  
 BLK SLTY, ARG MTX, EA, DULL,  
 MOD CALC

DOL/LS: GY-DKGY, FRM-HD, MICRXLN FXLN/  
 SMTH/CRYPTXLN IP, SLTYTXT/SNDY-GRNY

TR: SALT/ANHY

LS: WH-OFF-WH-DKGY, FRM-HD,  
 MICRXLN-FXLN/SMTH/CRYPTXLN IP, SLTY  
 TXT/SNDY-GRNY

SH: GY-DKGY-BLK, CARB, SFT-MOD  
 HD, BLKY-S/BLKY, SL FISS IP,  
 BLK SLTY, ARG MTX, EA, DULL,  
 MOD CALC

DOL/LS: GY-DKGY, FRM-HD, MICRXLN FXLN/  
 SMTH/CRYPTXLN IP, SLTYTXT/SNDY-GRNY

TR: SALT/ANHY

LS: WH-OFF-WH-DKGY, FRM-HD,  
 MICRXLN-FXLN/SMTH/CRYPTXLN IP, SLTY  
 TXT/SNDY-GRNY

SH: GY-DKGY-BLK, CARB, SFT-MOD  
 HD, BLKY-S/BLKY, SL FISS IP,  
 BLK SLTY, ARG MTX, EA, DULL,  
 MOD CALC

DOL/LS: GY-DKGY, FRM-HD, MICRXLN FXLN/  
 SMTH/CRYPTXLN IP, SLTYTXT/SNDY-GRNY

TR: SALT/ANHY

**09/09/2012 (SUN) 5:00 AM**  
**@ 7801.3'**

LS: WH - OFFWH - DTYWH  
 -LTGY- GY, FRM - MOD HD,  
 S/BLKY-S/FLKY, FXLN/ SMTH,  
 CRYPTXLN IP, DOL TXT.

DOL/LS: GY-DKGY, FRM-HD, MICRXLN FXLN/  
 SMTH/CRYPTXLN IP, SLTYTXT/SNDY-GRNY

TOOH @7801.3' TO P/U  
 GR TOOLS

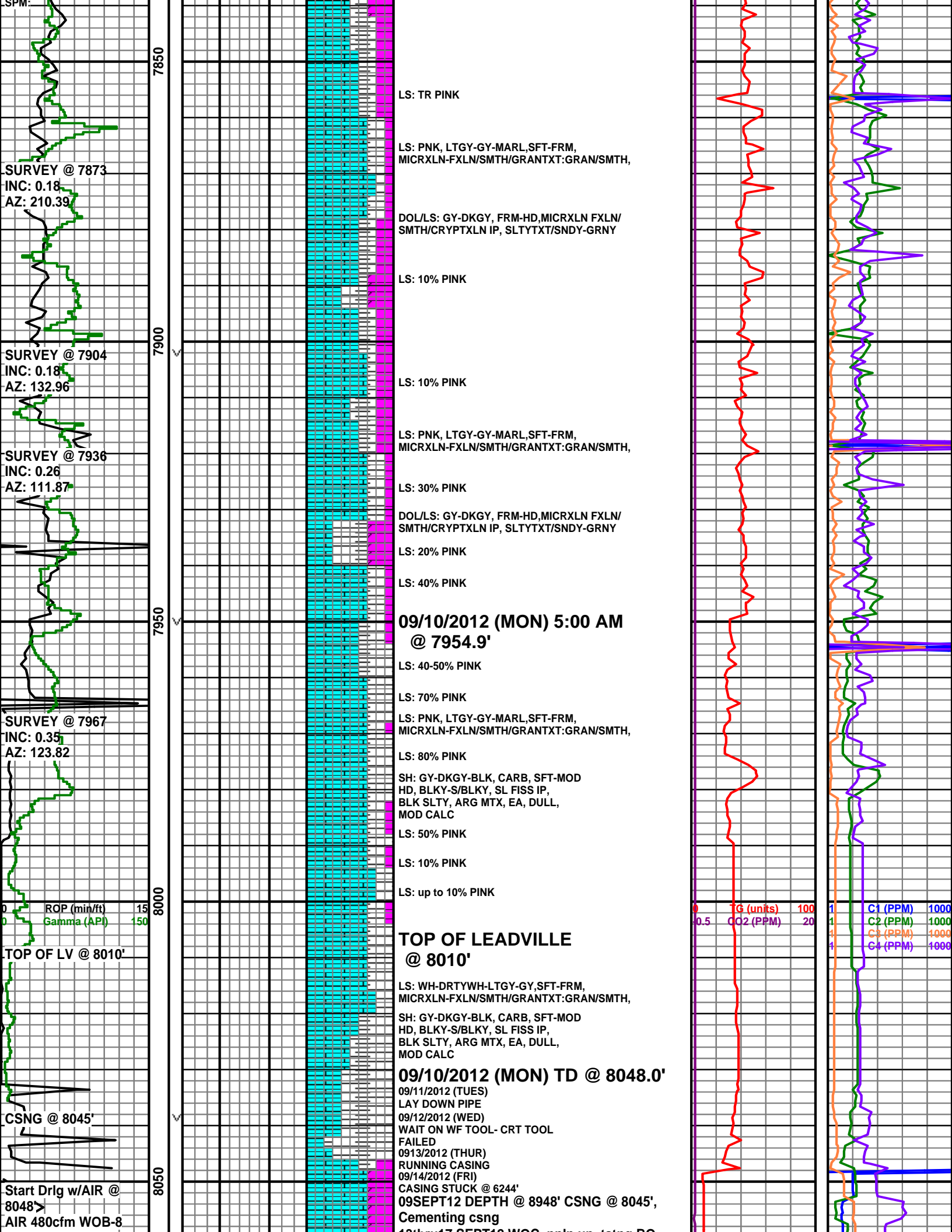
CO2 (min/ft) 15  
 Gamma (API) 150

SURVEY @ 7809'  
 INC: 0.26  
 AZ: 240.72

MW:  
 VIS:  
 PH: 12  
 CHLR: 188000 WOB:  
 PP:

GAS/CO2 TEST

CO2 (PPM) 20  
 C1 (PPM) 1000  
 C2 (PPM) 1000  
 C3 (PPM) 1000  
 C4 (PPM) 1000



7850  
7900  
7950  
8000  
8050

SURVEY @ 7873  
INC: 0.18  
AZ: 210.39

SURVEY @ 7904  
INC: 0.18  
AZ: 132.96

SURVEY @ 7936  
INC: 0.26  
AZ: 111.87

SURVEY @ 7967  
INC: 0.35  
AZ: 123.82

ROP (min/ft) 15  
Gamma (API) 150

TOP OF LV @ 8010'

CSNG @ 8045'

Start Drlg w/AIR @ 8048'  
AIR 480cfm WOB-8

LS: TR PINK  
LS: PNK, LTGY-GY-MARL,SFT-FRM,  
MICRXLN-FXLN/SMTH/GRANTXT:GRAN/SMTH,

DOL/LS: GY-DKGY, FRM-HD,MICRXLN FXLN/  
SMTH/CRYPTXLN IP, SLTYTXT/SNDY-GRNY

LS: 10% PINK

LS: 10% PINK

LS: PNK, LTGY-GY-MARL,SFT-FRM,  
MICRXLN-FXLN/SMTH/GRANTXT:GRAN/SMTH,

LS: 30% PINK

DOL/LS: GY-DKGY, FRM-HD,MICRXLN FXLN/  
SMTH/CRYPTXLN IP, SLTYTXT/SNDY-GRNY

LS: 20% PINK

LS: 40% PINK

**09/10/2012 (MON) 5:00 AM  
@ 7954.9'**

LS: 40-50% PINK

LS: 70% PINK

LS: PNK, LTGY-GY-MARL,SFT-FRM,  
MICRXLN-FXLN/SMTH/GRANTXT:GRAN/SMTH,

LS: 80% PINK

SH: GY-DKGY-BLK, CARB, SFT-MOD  
HD, BLKY-S/BLKY, SL FISS IP,  
BLK SLTY, ARG MTX, EA, DULL,  
MOD CALC

LS: 50% PINK

LS: 10% PINK

LS: up to 10% PINK

**TOP OF LEADVILLE  
@ 8010'**

LS: WH-DRTYWH-LTGY-GY,SFT-FRM,  
MICRXLN-FXLN/SMTH/GRANTXT:GRAN/SMTH,

SH: GY-DKGY-BLK, CARB, SFT-MOD  
HD, BLKY-S/BLKY, SL FISS IP,  
BLK SLTY, ARG MTX, EA, DULL,  
MOD CALC

**09/10/2012 (MON) TD @ 8048.0'**

09/11/2012 (TUES)  
LAY DOWN PIPE  
09/12/2012 (WED)  
WAIT ON WF TOOL- CRT TOOL  
FAILED  
09/13/2012 (THUR)  
RUNNING CASING  
09/14/2012 (FRI)  
CASING STUCK @ 6244'

**09SEPT12 DEPTH @ 8948' CSNG @ 8045',  
Cementing csng**

0.5 TG (units) 100  
CO2 (PPM) 20

C1 (PPM) 1000  
C2 (PPM) 1000  
C3 (PPM) 1000  
C4 (PPM) 1000

RPM-70 H2O-5gpm

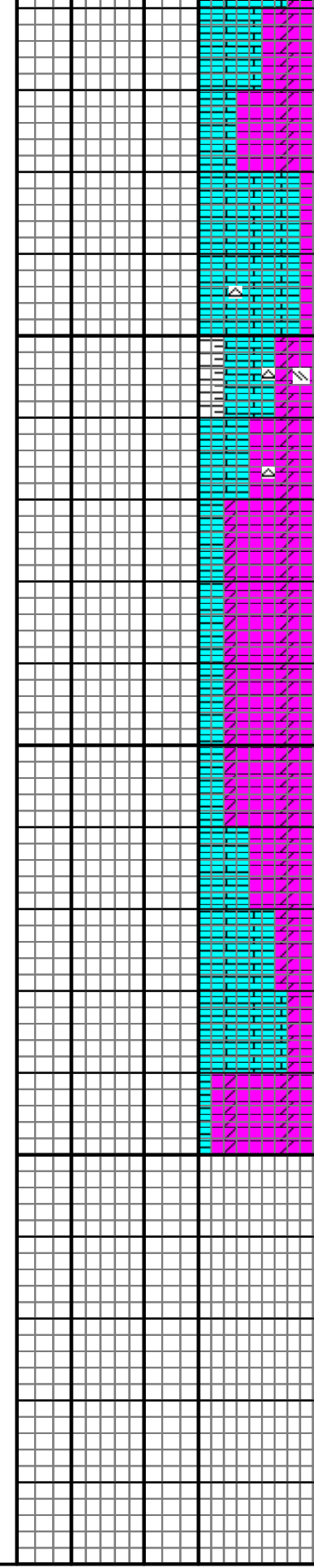
BIT #5 SIZE-6" Halli  
EQH30R 11719194  
Dpth-8048'

WOB-12 RPM-70  
SPP-507 AIR-1500 cfm

ROP (min/ft) 15  
Gamma (API) 150

TD-8200'  
Thanks for using  
Above Enterprise,  
Leon Walters

8100  
8150  
8200  
50



13thru17 SEPT12 WOC, npin up, tstng BO  
**18SEPT12 DPTH 8048' Installing rotating head washing to csng collar/shoe**

DOL: OFFFWH-LTGY-GY, HD-FRM, GRAN-SUCR  
TXT:GRAN, VUGY

LS: WH-OFFFWH, FRM-HD, FXLN/SMTH/GRAN  
TXT:GRAN/SMTH,

LS: WH-OFFFWH, FRM-HD, FXLN/SMTH/GRAN  
TXT:GRAN/SMTH,

SH: LTTN-TN, SFT, BLKY-S/BLKY, SL FISS IP,  
BLK SLTY, ARG MTX, EA, DULL-SHNY, LT-CHT

DOL: OFFFWH-LTGY-GY, HD-FRM, GRAN-SUCR  
TXT:GRAN, VUGY

DOL: LTGY-GY, HD-FRM, GRAN-SUCR  
TXT:GRAN, VUGY

DOL: LTGY-GY, HD-FRM, GRAN-SUCR  
TXT:GRAN, VUGY

**19SEPT12 DRLG @ 8164'**  
DOL: LTGY-GY-DKGY, HD-FRM, GRAN-SUCR  
TXT:GRAN, VUGY

DOL: LTGY-GY-DKGY, HD-FRM, GRAN-SUCR  
TXT:GRAN, VUGY

LS: WH-OFFFWH, FRM-HD, FXLN/SMTH/GRAN  
TXT:GRAN/SMTH,

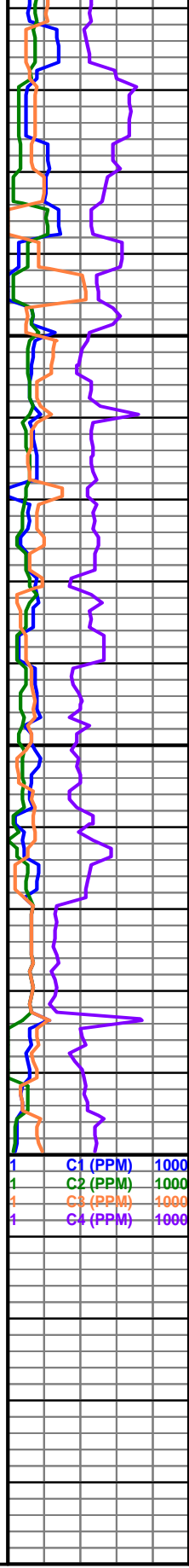
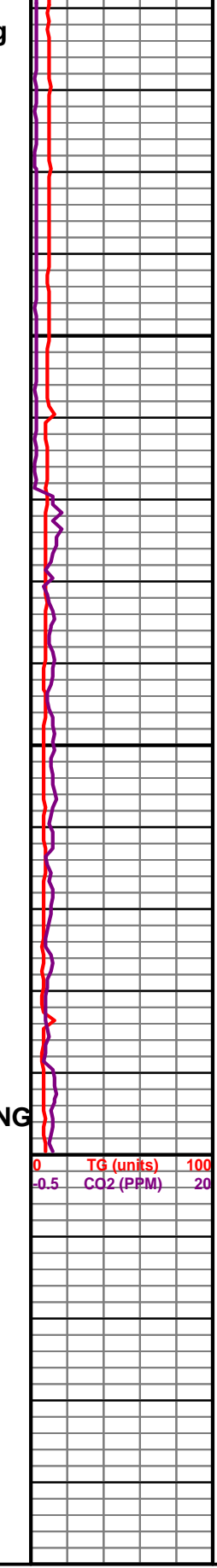
LS: WH-OFFFWH, FRM-HD, FXLN/SMTH/GRAN  
TXT:GRAN/SMTH,

DOL: LTGY-GY-DKGY, HD-FRM, GRAN-SUCR  
TXT:GRAN, VUGY

**20SEPT12 DEPTH 8200' RUNNING ELECT LOGS**

**21SEPT thru 29SEPT12 Fishing**  
**30SEPT12 running Elect Logs**  
**01OCT12 TIH to cmt pilot hole**

**TD PILOT HOLE 8200'**  
Thanks for using Above  
Enterprise, Leon Walters



0 TG (units) 100  
-0.5 CO2 (PPM) 20

1 C1 (PPM) 1000  
1 C2 (PPM) 1000  
1 C3 (PPM) 1000  
1 C4 (PPM) 1000