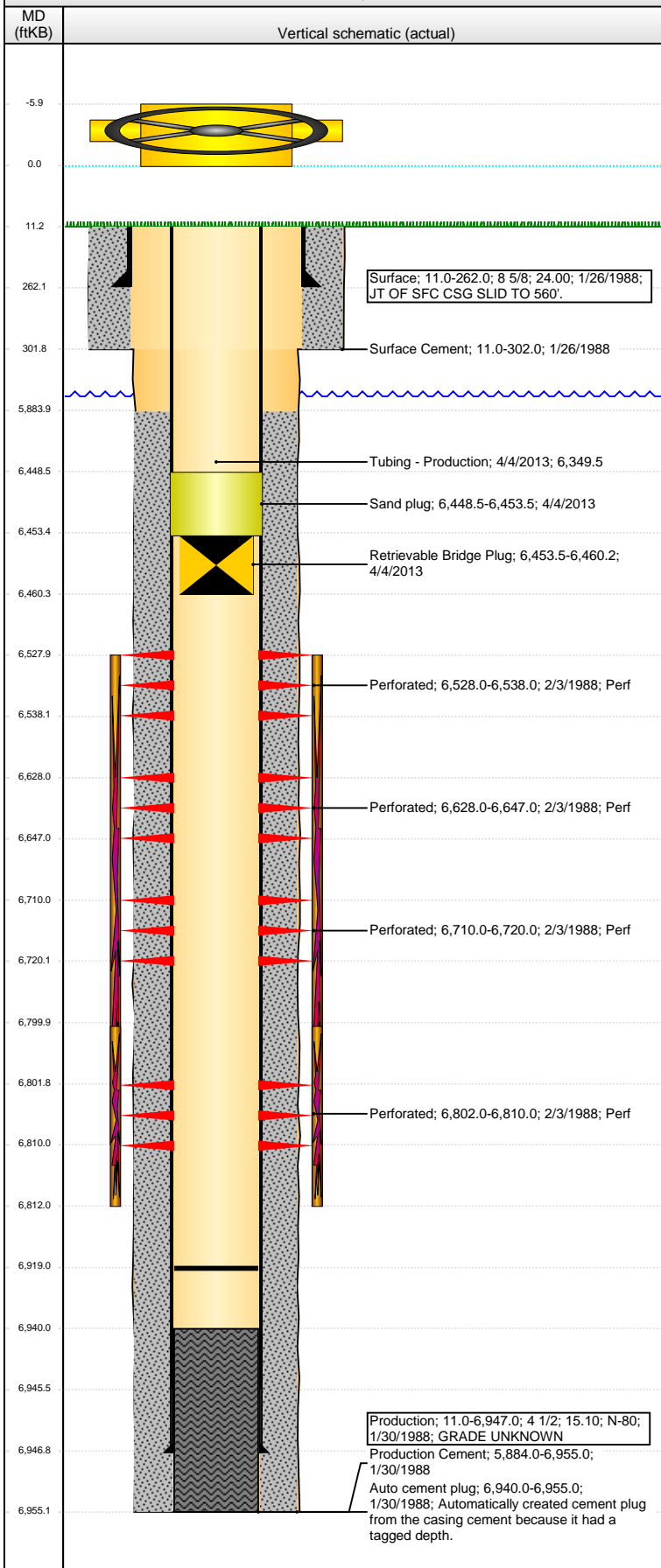


Well Name: BAKER B02-04

VERTICAL - ORIGINAL HOLE, 7/10/2013 1:53:32 PM



Well Header

API	Business Unit	District	Well Config
05-123-13800	WATTENBERG	15	VERTICAL
Original KB Elevation (ft)	KB - GL / MSL (ftKB)	Spud Date	P & A Date
4,648.00	11.00	1/26/1988	

Comment

JT OF SFC CSG SLID TO 560'. LIMITED ENTRY.

Directions To Well

RD 57 & 62, E 2/10, N 1/10, W INTO.

Congressional Location

Quarter 1	Quarter 2	Quarter 3	Quarter 4	Section	Township	Twnshp N...	Range	Rng E/W Dir
		NW	NW	2	5	N	64	W

Bottom Hole Location

North-South Distance (ft)	From N or S Line	East-West Distance (ft)	From E or W Line

Plug Back Total Depths

Date	Depth (ftKB)	Method	Com
	6,940.0		COMPLETION REPORT
1/17/2003	6,914.0	TAG	
3/6/2010	6,886.0	TAG	
4/3/2013	6,919.0	TAG W/223 JTS	

Wellbore Sections

Section Des	Size (in)	Act Top (ftKB)	Act Btm (ftKB)
SURFACE	12 1/4	11.0	302.0
PRODUCTION	7 7/8	302.0	6,955.0

Zone Statuses

Zone Name	Status Date	Status	Job
NIOBRARA	2/29/1988	PR	DRILLING/COMPLETION - ORIGINAL, 1/26/1988 15:30
CODELL	2/29/1988	PR	DRILLING/COMPLETION - ORIGINAL, 1/26/1988 15:30
CODELL	1/29/2003	PR	RE-FRAC, 1/17/2003 06:00

Casing Strings

Surface, 262.0ftKB

Casing Description	Run Date	OD (in)	Wt/Len (l...)	Grade	Top (ftKB)	MD (ftKB)
Surface	1/26/1988	8 5/8	24.00		11.0	262.0

Production, 6,947.0ftKB

Casing Description	Run Date	OD (in)	Wt/Len (l...)	Grade	Top (ftKB)	MD (ftKB)
Production	1/30/1988	4 1/2	15.10	N-80	11.0	6,947.0

Cement

Description	Top Depth (ftKB)	Bottom Depth (ftKB)
Surface Cement	11.0	302.0
Description	Top Depth (ftKB)	Bottom Depth (ftKB)
Production Cement	5,884.0	6,955.0

Tubing Components

Item Des	OD (in)	Wt (lb/ft)	Grade	Jts	Len (ft)	Btm (ftKB)	Btm (TVD) (ftKB)

Perforation Data

Zone	Bnch/St g	Entered Shot Total	Top (ftKB)	Btm (ftKB)	Date
NIOBRARA, ORIGINAL HOLE		2	6,528.00	6,538.00	2/3/1988
NIOBRARA, ORIGINAL HOLE		5	6,628.00	6,647.00	2/3/1988
NIOBRARA, ORIGINAL HOLE		2	6,710.00	6,720.00	2/3/1988
CODELL, ORIGINAL HOLE		6	6,802.00	6,810.00	2/3/1988

Stimulations & Treatments

Date	Zone	Primary Job Type
2/4/1988	NIOBRARA-CODELL, ORIGINAL HOLE	DRILLING/COMPLETION - ORIGINAL
Technical Result	Tech Result Details	Tech Result Note

Comment

Date	Zone	Primary Job Type
1/23/2003	CODELL, ORIGINAL HOLE	RE-FRAC
Technical Result	Tech Result Details	Tech Result Note

Comment

Other In Hole

Run Date	Des	OD (in)	Top (ftKB)	Btm (ftKB)
4/4/2013	Retrieval Bridge Plug	3.62	6,453.5	6,460.2

Well Name: BAKER B02-04

VERTICAL - ORIGINAL HOLE, 7/10/2013 1:53:33 PM

Other In Hole

Run Date	Des	OD (in)	Top (ftKB)	Btm (ftKB)
4/4/2013	Sand plug	4 1/2	6,448.5	6,453.5

Logs

Date	Type	Top (ftKB)	Btm (ftKB)
1/30/1988	DENSITY/NEUTRON	3,450.0	6,948.0
1/30/1988	INDUCTION	200.0	6,948.0
2/3/1988	CEMENT BOND	3,450.0	6,948.0

