



June 3, 2013

Colorado Oil and Gas Conservation Commission  
The Chancery Building  
1120 Lincoln Street, Suite 801  
Denver, CO 80203

Attn: Mr. Matt Lepore, Director

RE: Helton 5-63-27 Pad  
Wells: Helton 5-63-27-3225CH (320 Spacing Unit)  
Helton 5-63-27-3340BH (320 Spacing Unit)  
Helton 5-63-27-3340CDH (320 Spacing Unit)  
Helton 5-63-27-4841CH (320 Spacing Unit)  
Helton 5-63-27-4956BH (320 Spacing Unit)  
Helton 5-63-27-4956CDH (320 Spacing Unit)

Niobrara/Codell New Drill  
Township 5 North, Range 63 West, 6<sup>th</sup> P.M.  
Section 27: S/2N/2, N/2S/2 and S/2  
SHL: NW/4SW/4  
Weld County, Colorado

Mr. Lepore:

Bill Barrett Corporation ("BBC") is planning to drill the captioned boundary well in accordance with the provisions of COGCC 318A.e.

BBC's proposed wellbore spacing units consists of the S/2N/2, N/2S/2 and the S/2 of Section 27, T5N, R63W, creating the above referenced spacing units per well in which we will target the Codell and Niobrara formations. In accordance with COGCC Rule 318A.e.(6), all of the owners have been notified about the Governmental Section Temporary Drilling and Spacing Unit for the subject well.

Enclosed are copies of the following documents to assist you in your review and approval of BBC's proposed APD for the captioned well.

- Plat illustrating the proposed wellbore spacing unit on existing location plat.

Thank you for your attention to the enclosed. BBC respectfully requests that the COGCC review the enclosed information and approve the Application for Permit to Drill the captioned well.

Sincerely,

A handwritten signature in blue ink, appearing to read 'Wes DiGrappa', with a long horizontal line extending to the right.

Wes DiGrappa  
Land Administrator

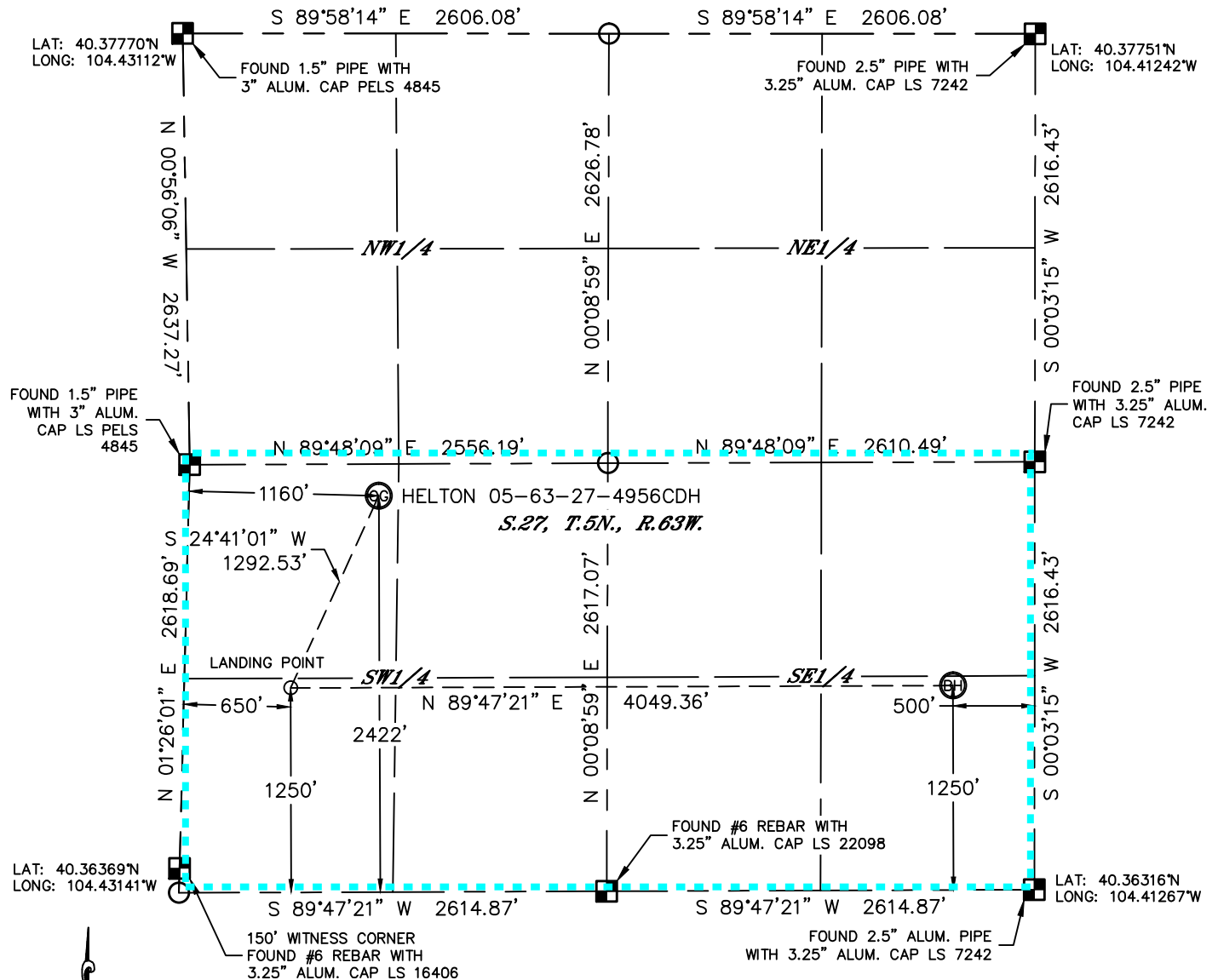


Lat40°, Inc. 1635 Foxtrail Drive, Suite 325 Loveland, CO 970-776-3321

# WELL LOCATION CERTIFICATE

THIS MAP DOES NOT REPRESENT A BOUNDARY SURVEY

SECTION: 27  
TOWNSHIP: 5N  
RANGE: 63W



In accordance with a request from Jeff Fandrich with BILL BARRETT CORPORATION Lat40°, Inc. has determined the surface location of the HELTON 05-63-27-4659CDH to be 2422' from the SOUTH line and 1160' from the WEST line and the bottom hole to be 1250' from the SOUTH line and 500' from the EAST line as measured at right angles from the section lines of Section 27, Township 5 North, Range 63 West of the Sixth Principal Meridian, County of Weld, State of Colorado.

I hereby state that this Well Location Certificate was prepared by me, or under my direct supervision, that the fieldwork was completed on 5/3/2013, for and on behalf of BILL BARRETT CORPORATION That this is not a Land Survey Plat or an Improvement Survey Plat, and that it is not to be relied upon for establishment of fence, building, or other future improvement lines.

#### NOTE:

- 1) Bearings shown are Grid Bearings of the Colorado State Plane Coordinate System, North Zone, North American Datum 1983/2007. The lineal dimensions as contained herein are based upon the "U.S. Survey Foot."
- 2) Ground elevations are based on an observed GPS elevation (NAVD 1988 DATUM).
- 3) IMPROVEMENTS: See LOCATION DRAWING for all visible improvements within 400' of disturbed area.
- 4) SURFACE USE: RANGELAND
- 5) INSTRUMENT OPERATOR: BRIAN ROTTINGHAUS

#### SURFACE LOCATION

LAT: 40.36990°N (40°22'11.6"N)  
LONG: 104.42694°W (104°25'37.0"W)  
LAT: 40.36992°N (NAD27)  
LONG: 104.42643°W (NAD27)  
PDOP: 2.0  
ELEV: 4542'  
1/4,1/4: NW1/4SW1/4  
NEAREST PROPERTY LINE: 342' EAST

#### LANDING POINT

LAT: 40.36669°N (40°22'00.1"N)  
LONG: 104.42893°W (104°25'44.2"W)  
LAT: 40.36671°N (NAD27)  
LONG: 104.42842°W (NAD27)

#### BOTTOM HOLE

LAT: 40.36660°N (40°21'59.8"N)  
LONG: 104.41440°W (104°24'51.9"W)  
LAT: 40.36662°N (NAD27)  
LONG: 104.41389°W (NAD27)

#### NOTE

According to Colorado law, you must commence any legal action based upon any defect in this W.L.C. within three years after you discover such defect. In no event, may any action based upon any defect in this survey be commenced more than ten years after the date of the certificate shown hereon. (13-80-105 C.R.S.)

#### LEGEND

- = ALIQUOT MONUMENT AS DESCRIBED  
○ = CALCULATED POSITION

Kyle E. Rutz—On behalf of Lat40°  
Colorado Licensed Professional Land Surveyor  
Land Surveyor No. 38307  
DATE: 5/22/2013  
PROJECT#: 2013048

