

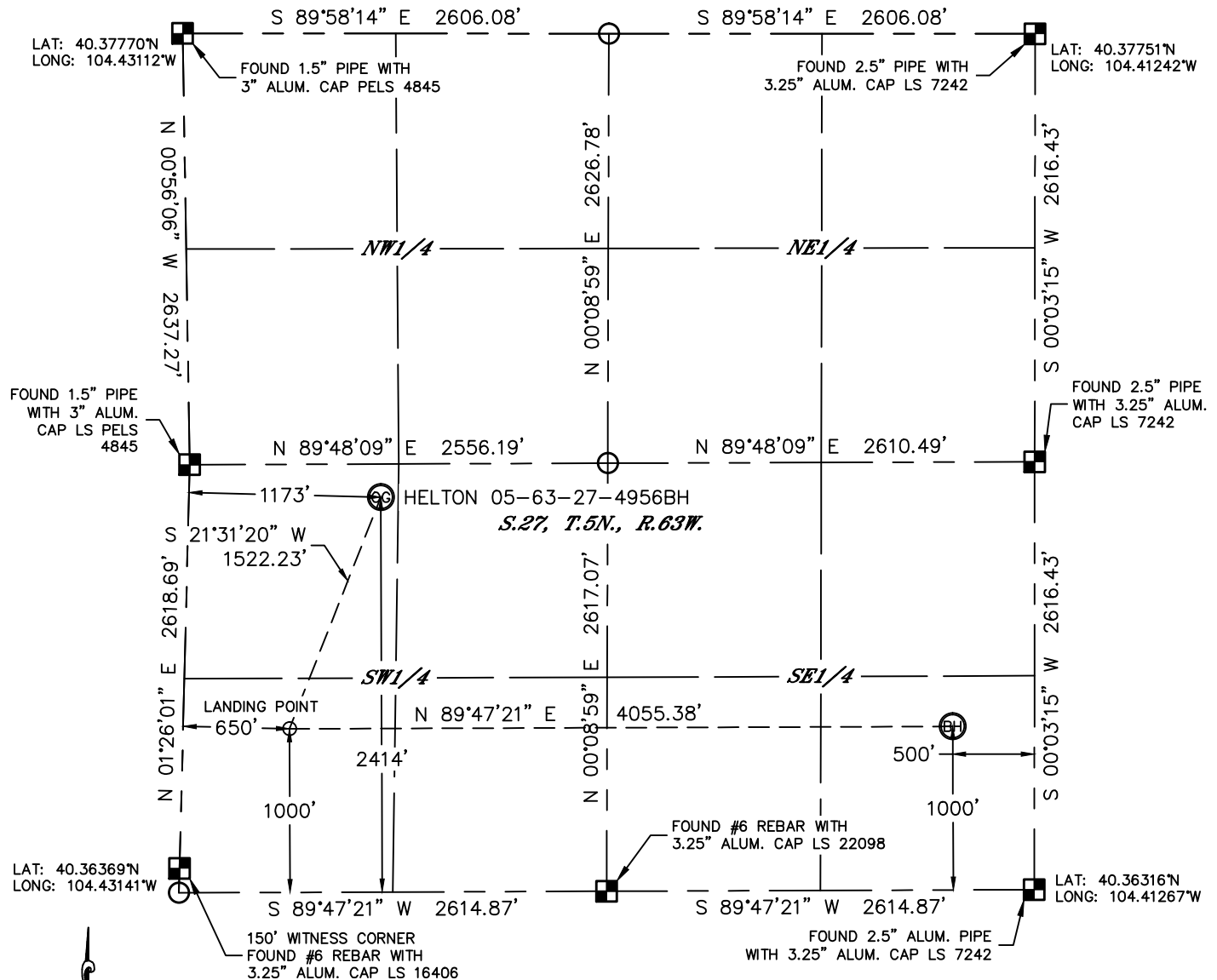


Lat40°, Inc. 1635 Foxtrail Drive, Suite 325 Loveland, CO 970-776-3321

WELL LOCATION CERTIFICATE

THIS MAP DOES NOT REPRESENT A BOUNDARY SURVEY

SECTION: 27
TOWNSHIP: 5N
RANGE: 63W



In accordance with a request from Jeff Fandrich with BILL BARRETT CORPORATION Lat40°, Inc. has determined the surface location of the HELTON 05-63-27-4956BH to be 2414' from the SOUTH line and 1173' from the WEST line and the bottom hole to be 1000' from the SOUTH line and 500' from the EAST line as measured at right angles from the section lines of Section 27, Township 5 North, Range 63 West of the Sixth Principal Meridian, County of Weld, State of Colorado.

I hereby state that this Well Location Certificate was prepared by me, or under my direct supervision, that the fieldwork was completed on 5/3/2013, for and on behalf of BILL BARRETT CORPORATION That this is not a Land Survey Plat or an Improvement Survey Plat, and that it is not to be relied upon for establishment of fence, building, or other future improvement lines.

NOTE:

- 1) Bearings shown are Grid Bearings of the Colorado State Plane Coordinate System, North Zone, North American Datum 1983/2007. The lineal dimensions as contained herein are based upon the "U.S. Survey Foot."
- 2) Ground elevations are based on an observed GPS elevation (NAVD 1988 DATUM).
- 3) IMPROVEMENTS: See LOCATION DRAWING for all visible improvements within 400' of disturbed area.
- 4) SURFACE USE: RANGELAND
- 5) INSTRUMENT OPERATOR: BRIAN ROTTINGHAUS

SURFACE LOCATION

LAT: 40.36987°N (40°22'11.5"N)
LONG: 104.42690°W (104°25'36.8"W)
LAT: 40.36989°N (NAD27)
LONG: 104.42639°W (NAD27)
PDOP: 2.0
ELEV: 4542'
1/4,1/4: NW1/4SW1/4
NEAREST PROPERTY LINE: 330' EAST
LANDING POINT
LAT: 40.36601°N (40°21'57.6"N)
LONG: 104.42896°W (104°25'44.3"W)
LAT: 40.36602°N (NAD27)
LONG: 104.42845°W (NAD27)

BOTTOM HOLE

LAT: 40.36591°N (40°21'57.3"N)
LONG: 104.41442°W (104°24'51.9"W)
LAT: 40.36593°N (NAD27)
LONG: 104.41391°W (NAD27)

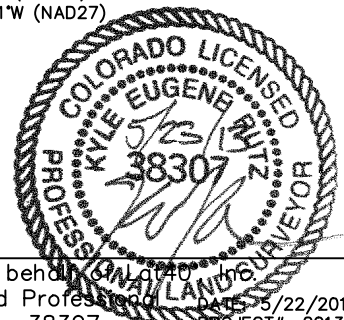
NOTE

According to Colorado law, you must commence any legal action based upon any defect in this W.L.C. within three years after you discover such defect. In no event, may any action based upon any defect in this survey be commenced more than ten years after the date of the certificate shown hereon. (13-80-105 C.R.S.)

LEGEND

- = ALIQUOT MONUMENT AS DESCRIBED
○ = CALCULATED POSITION

Kyle E. Rutz—On behalf of Lat40°
Colorado Licensed Professional Land Surveyor No. 38307
DATE: 5/22/2013
PROJECT#: 2013048



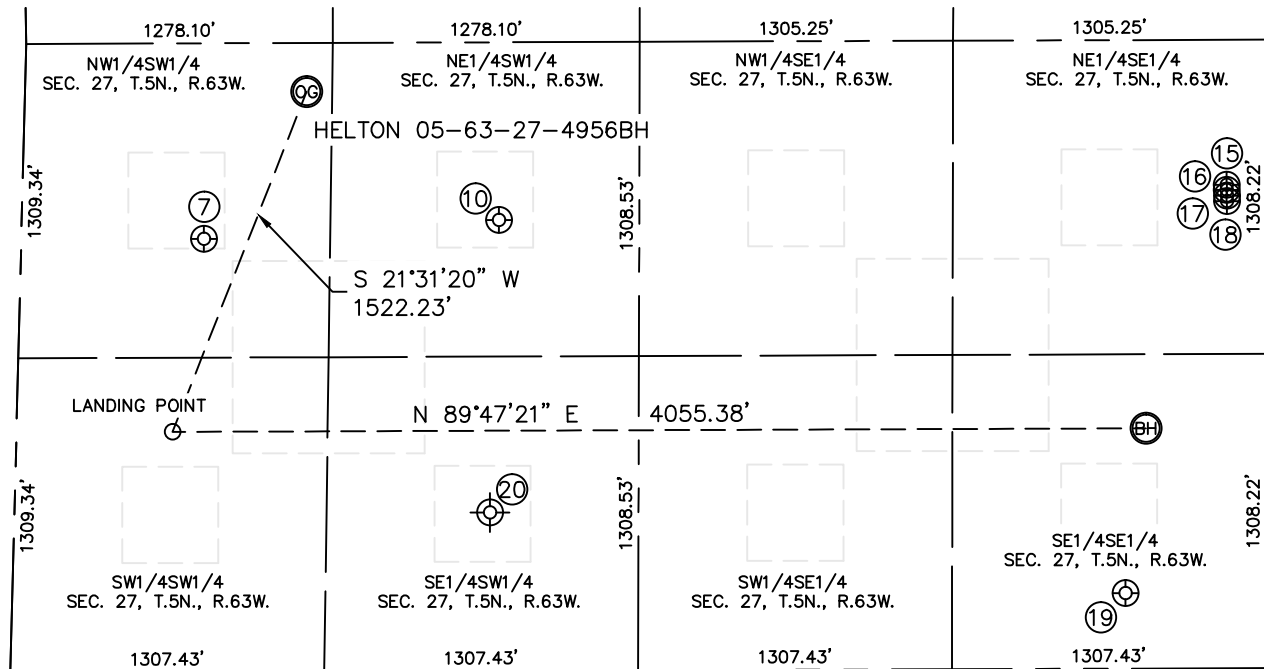


Lat40°, Inc. 1635 Foxtrail Drive, Suite 325 Loveland, CO 970-776-3321

SITE SKETCH

HELTON 05-63-27-4956BH

SECTION: 27
TOWNSHIP: 5N
RANGE: 63W



⑦

70 RANCH 13-27
NW1/4SW1/4
1803' FSL
761' FWL
LAT-40.36821°N
LONG-104.42846°W
PDOP: 2.2
ELEV: 4538'

⑩

70 RANCH 23-27
NE1/4SW1/4
1877' FSL
1987' FWL
LAT-40.36838°N
LONG-104.42405°W
PDOP: 2.1
ELEV: 4544'

⑮

70 RANCH 5-63-27-32H
NE1/4SE1/4
2013' FSL
166' FEL
LAT-40.36868°N
LONG-104.41317°W
PDOP: 2.2
ELEV: 4587'

⑯

70 RANCH 5-63-27-33H
NE1/4SE1/4
1990' FSL
165' FEL
LAT-40.36862°N
LONG-104.41317°W
PDOP: 2.2
ELEV: 4587'

⑰

70 RANCH 5-63-27-48H
NE1/4SE1/4
1968' FSL
164' FEL
LAT-40.36856°N
LONG-104.41316°W
PDOP: 2.2
ELEV: 4587'

⑱

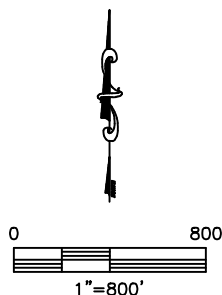
70 RANCH 5-63-27-49H
NE1/4SE1/4
1944' FSL
163' FEL
LAT-40.36849°N
LONG-104.41316°W
PDOP: 1.5
ELEV: 4587'

⑲

NORTH PLATTE P-T-34HZ
SE1/4SE1/4
314' FSL
585' FEL
LAT-40.36403°N
LONG-104.41475°W
PDOP: 0.8
ELEV: 4538'

⑳

RONALD #1
(Plugged and Abandoned)
SE1/4SW1/4
660' FSL (COGCC)
1980' FWL (COGCC)
LAT-40.36542°N (COGCC)
LONG-104.42453°W (COGCC)
PDOP: N/A
ELEV: 4536' (COGCC)



DATE: 5/21/2013
PROJECT#: 2013048