

## WELL LOCATION CERTIFICATE

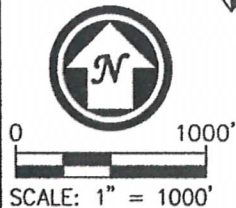
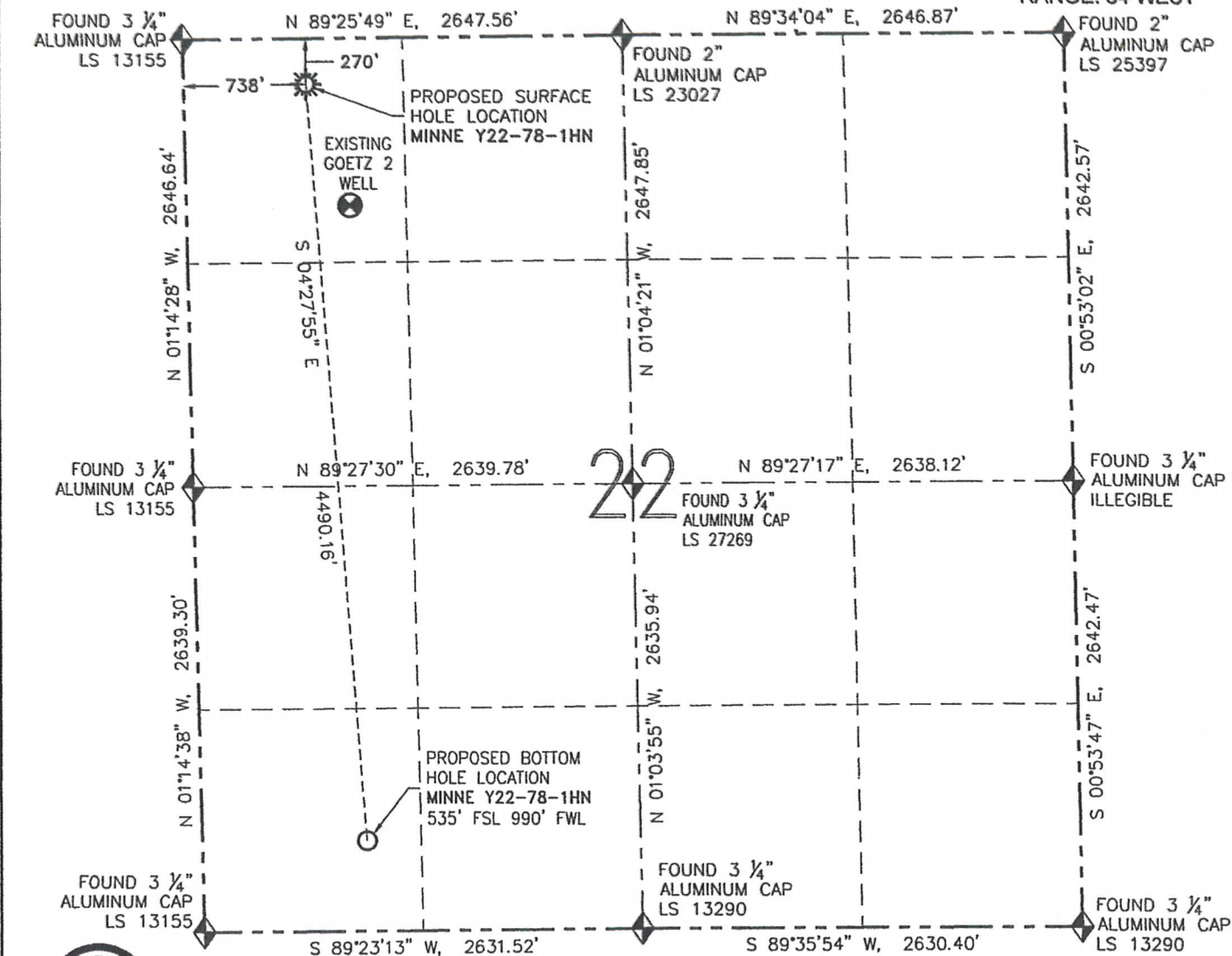
MINNE Y22-78-1HN

THIS MAP DOES NOT REPRESENT A BOUNDARY SURVEY

SECTION: 22

TOWNSHIP: 2 NORTH

RANGE: 64 WEST



## SURFACE HOLE LOCATION (NAD 83)

LATITUDE: N 40.13047°  
 LONGITUDE: W 104.54435°  
 ELEVATION: 4986  
 PDOP: 1.5

1/4-1/4: NW NW

NEAREST PROPERTY LINE: 270' NORTH

## BOTTOM HOLE LOCATION

LATITUDE: N 40.11818°  
 LONGITUDE: W 104.54328°

I HEREBY CERTIFY THAT THIS WELL LOCATION CERTIFICATE WAS PREPARED BY ME, OR UNDER MY DIRECT SUPERVISION, THAT THE FIELD WORK WAS COMPLETED ON 08/21/12, FOR AND ON BEHALF OF NOBLE ENERGY INC., THAT IT IS NOT A LAND SURVEY PLAT OR AN IMPROVEMENT SURVEY PLAT, AND THAT IT IS NOT TO BE RELIED UPON FOR ESTABLISHMENT OF FENCES, BUILDINGS, OR OTHER FUTURE IMPROVEMENT LINES.

IN ACCORDANCE WITH A REQUEST FROM MIKE RODINE-NOBLE ENERGY INC., R&R ENGINEERS-SURVEYORS, INC. HAS DETERMINED THE SURFACE HOLE LOCATION OF THE MINNE Y22-78-1HN WELL TO BE 270' FNL AND 738' FWL AS MEASURED AT (90) DEGREES FROM THE SECTION LINES OF SECTION 22, TOWNSHIP 2 NORTH, RANGE 64 WEST OF THE 6TH PRINCIPAL MERIDIAN, WELD COUNTY, COLORADO. THE BOTTOM HOLE LOCATION, AS PROVIDED BY THE CLIENT, IS TO BE 535' FSL AND 990' FWL OF SECTION 22, TOWNSHIP 2 NORTH RANGE 64 WEST.

## NOTES:

1. BEARINGS ARE GRID BEARINGS OF THE COLORADO STATE PLANE COORDINATE SYSTEM, NORTH ZONE, NAD 83. THE LINEAL DIMENSIONS SHOWN HEREON ARE BASED UPON THE "U.S. SURVEY FOOT".
2. ELEVATIONS ARE BASED UPON NGS OPUS SOLUTION NAVD 88 DATUM COMPUTED USING GEOID09.
3. THE NEAREST EXISTING WELL IS: GOETZ 2 763' SE.
4. SEE LOCATION DRAWING FOR ALL IMPROVEMENTS WITHIN 400' OF THE OIL/GAS LOCATION.
5. SURFACE USE: CROPLAND.

## LEGEND

- PROPOSED WELL
- EXISTING WELL
- BOTTOM HOLE
- FOUND MONUMENT



FIELD DATE: 08/21/12  
 PLOT DATE: 11/08/12  
 DRAWN BY: CJD  
 JOB NO.: NE12323  
 SHEET NO.: 1 of 6

## NOTICE:

ACCORDING TO COLORADO LAW, YOU MUST COMMENCE ANY LEGAL ACTION BASED UPON ANY DEFECT IN THIS W.L.C. WITHIN THREE YEARS AFTER YOU FIRST DISCOVER SUCH DEFECT. IN NO EVENT MAY ANY ACTION BASED UPON ANY DEFECT IN THIS W.L.C. BE COMMENCED MORE THAN TEN YEARS FROM THE DATE OF THE CERTIFICATION SHOWN HEREON (13-80-105 C.R.S.).



DAVID C. HOLMES, PLS 32828  
 FOR AND ON BEHALF OF R&R ENGINEERS-SURVEYORS, INC.

# SITE SKETCH

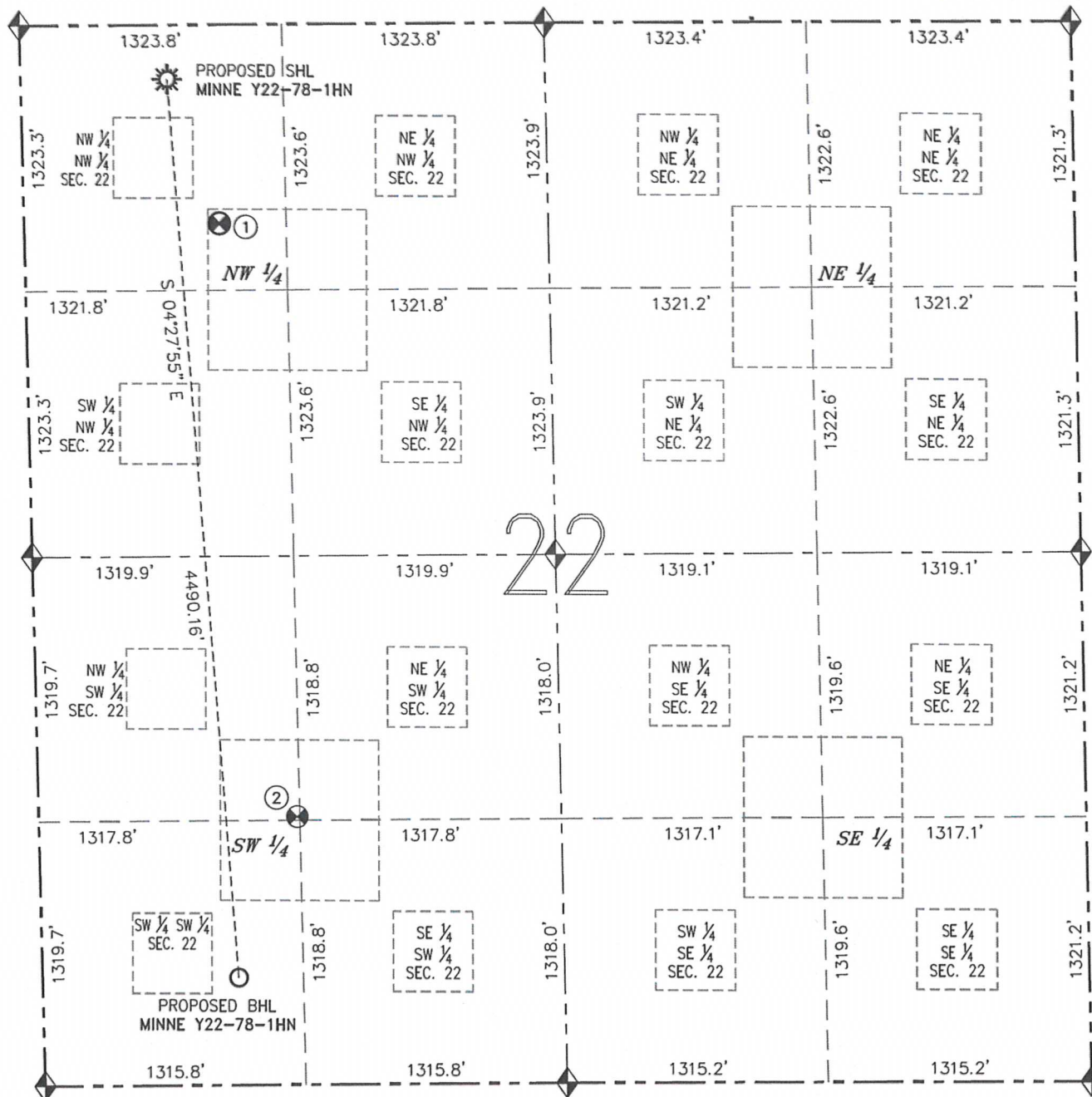
MINNE Y22-78-1HN

THIS MAP DOES NOT REPRESENT A BOUNDARY SURVEY

SECTION: 22

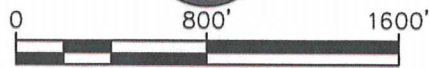
TOWNSHIP: 2 NORTH

RANGE: 64 WEST



① GOETZ 2  
NW/NW SEC 22  
990' FNL  
983' FWL  
EL=4986'  
N 40.12850°  
W 104.54345°  
PDOP 1.9

② ACCO-TERRA-BODECKER 40  
NW/SW SEC 22  
1336' FSL  
1302' FWL  
EL=4996'  
N 40.12038°  
W 104.54219°  
PDOP 1.7



SCALE: 1" = 800'

## NOTES:

- THIS SKETCH DOES NOT REPRESENT A BOUNDARY SURVEY.
- HORIZONTAL DATUM IS NAD 83.
- VERTICAL DATUM IS NAVD 88.

## LEGEND

- PROPOSED WELL
- EXISTING WELL
- BOTTOM HOLE
- FOUND MONUMENT
- CALCULATED POSITION



ENGINEERS  
SURVEYORS

FIELD DATE: 08/21/12  
PLOT DATE: 11/08/12  
DRAWN BY: CJD  
JOB NO.: NE12323  
SHEET NO.: 2 of 6