

# MINNE Y22-79HC

R&R ENGINEERS-SURVEYORS, INC. 7352 GREENRIDGE RD. STE. B19, WINDSOR, CO 80550 303-753-6730

## MULTI-WELL PAD DIRECTIONAL LAYOUT

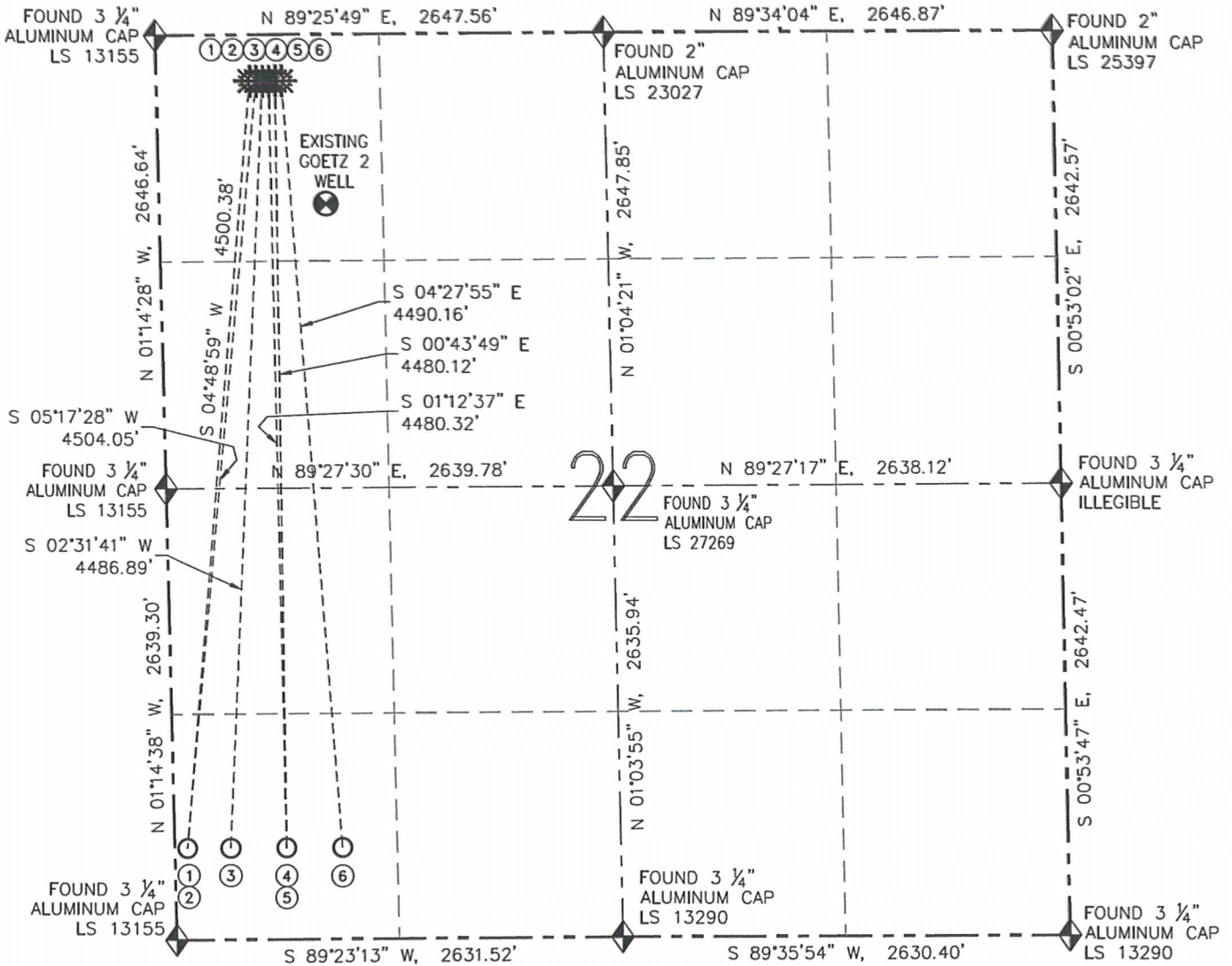
MINNE Y22-79HC, 79HN, 79-1HN, 78HC, 78HN, 78-1HN

THIS MAP DOES NOT REPRESENT A BOUNDARY SURVEY

SECTION: 22

TOWNSHIP: 2 NORTH

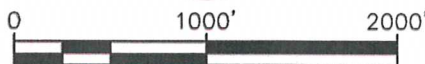
RANGE: 64 WEST



NO.	WELL NAME	FOOTAGES		LATITUDE	LONGITUDE	¼-¼
1	MINNE Y22-79HC	BHL: 535' FSL	BHL: 75' FWL	BHL: N 40.11818'	BHL: W 104.54655'	BHL: SW SW
2	MINNE Y22-79HN	BHL: 535' FSL	BHL: 75' FWL	BHL: N 40.11818'	BHL: W 104.54655'	BHL: SW SW
3	MINNE Y22-79-1HN	BHL: 535' FSL	BHL: 330' FWL	BHL: N 40.11818'	BHL: W 104.54564'	BHL: SW SW
4	MINNE Y22-78HC	BHL: 535' FSL	BHL: 660' FWL	BHL: N 40.11818'	BHL: W 104.54446'	BHL: SW SW
5	MINNE Y22-78HN	BHL: 535' FSL	BHL: 660' FWL	BHL: N 40.11818'	BHL: W 104.54446'	BHL: SW SW
6	MINNE Y22-78-1HN	BHL: 535' FSL	BHL: 990' FWL	BHL: N 40.11818'	BHL: W 104.54328'	BHL: SW SW



FIELD DATE: 08/21/12  
 PLOT DATE: 11/08/12  
 DRAWN BY: CJD  
 JOB NO.: NE12328  
 SHEET NO.: 8 of 11



SCALE: 1" = 1000'

### LEGEND

- PROPOSED WELL
- EXISTING WELL
- BOTTOM HOLE
- FOUND MONUMENT

# MINNE Y22-79HC

R&R ENGINEERS-SURVEYORS, INC. 7352 GREENRIDGE RD. STE. B19, WINDSOR, CO 80550 303-753-6730

## MULTI-WELL PAD LOCATION DRAWING

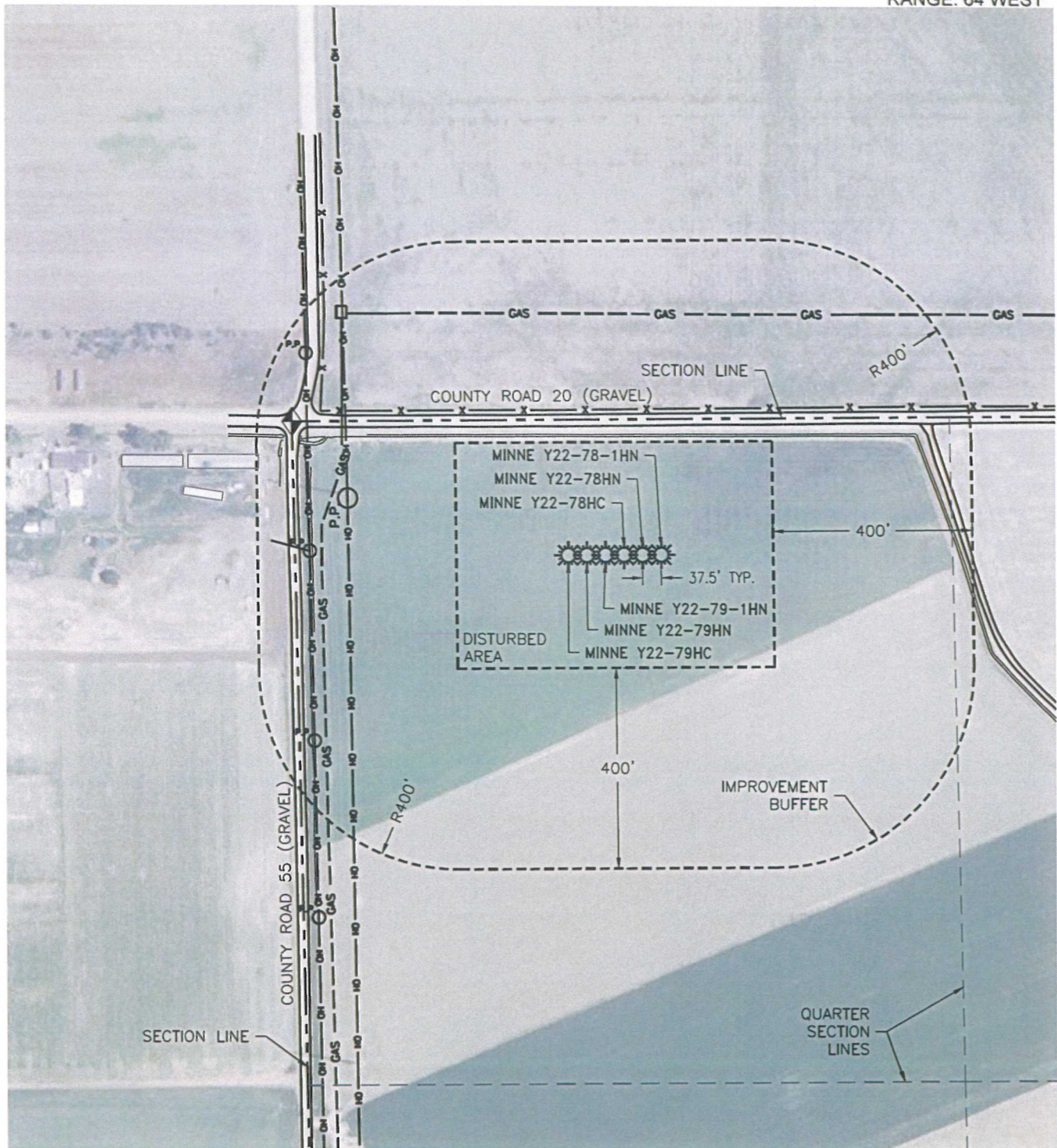
MINNE Y22-79HC, 79HN, 79-1HN, 78HC, 78HN, 78-1HN

THIS MAP DOES NOT REPRESENT A BOUNDARY SURVEY

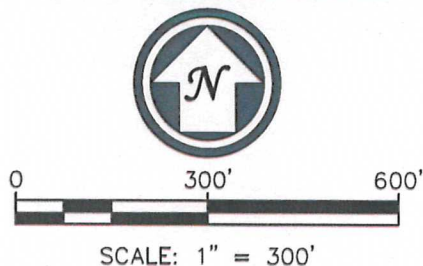
SECTION: 22



TOWNSHIP: 2 NORTH

RANGE: 64 WEST



	FIELD DATE: 08/21/12
	PLOT DATE: 11/08/12
	DRAWN BY: CJD
	JOB NO.: NE12328
	SHEET NO.: 9 of 11



LEGEND	
	PROPOSED WELL
	FOUND MONUMENT