

WELL LOCATION DRAWING

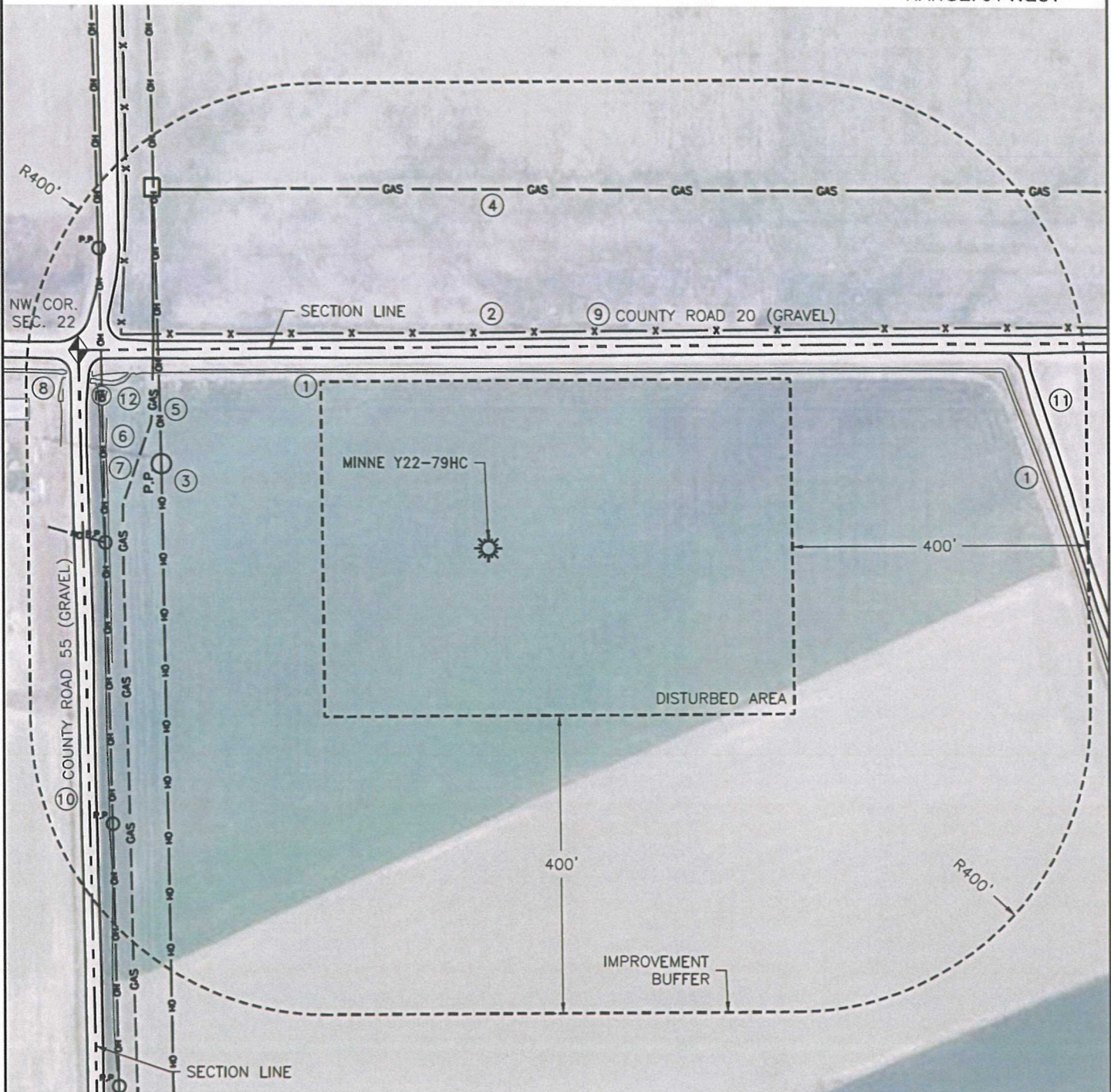
MINNE Y22-79HC

THIS MAP DOES NOT REPRESENT A BOUNDARY SURVEY

SECTION: 22

TOWNSHIP: 2 NORTH

RANGE: 64 WEST



DISTANCE TO NEAREST:

BUILDING:	646'± NW
PUBLIC ROAD (CR 20):	257'± N
OVERHEAD UTILITY:	442'± W
RAILROAD:	MORE THAN 1 MILE AWAY
PROP. LINE:	270'± N



FIELD DATE: 08/21/12
 PLOT DATE: 11/08/12
 DRAWN BY: CJD
 JOB NO.: NE12328
 SHEET NO.: 3 of 11



SCALE: 1" = 200'

LEGEND

- ◆ FOUND MONUMENT
- ⊙ IRRIGATION WELL
- ☀ PROPOSED WELL

IMPROVEMENTS:

1. CONC. IRRIGATION DITCH:	236'± N & 736'± NE
2. FENCE:	289'± N
3. OVERHEAD MAJOR UTILITY:	442'± W
4. UNDERGROUND GAS LINE:	481'± N
5. UNDERGROUND GAS LINE:	489'± NW
6. OVERHEAD UTILITY:	520'± W
7. DIRT IRRIGATION DITCH:	514'± W
8. BUILDING (BARN):	646'± NW
9. WCR 20:	257'± N
10. WCR 55:	540'± W
11. DITCH ACCESS ROAD:	762'± E
12. IRRIGATION WELL:	563'± NW