

MINNE Y22-72-1HN

R&R ENGINEERS-SURVEYORS, INC. 7352 GREENRIDGE RD. STE. D19, WINDSOR, CO 80550 303-753-6730

MULTI-WELL PAD DIRECTIONAL LAYOUT

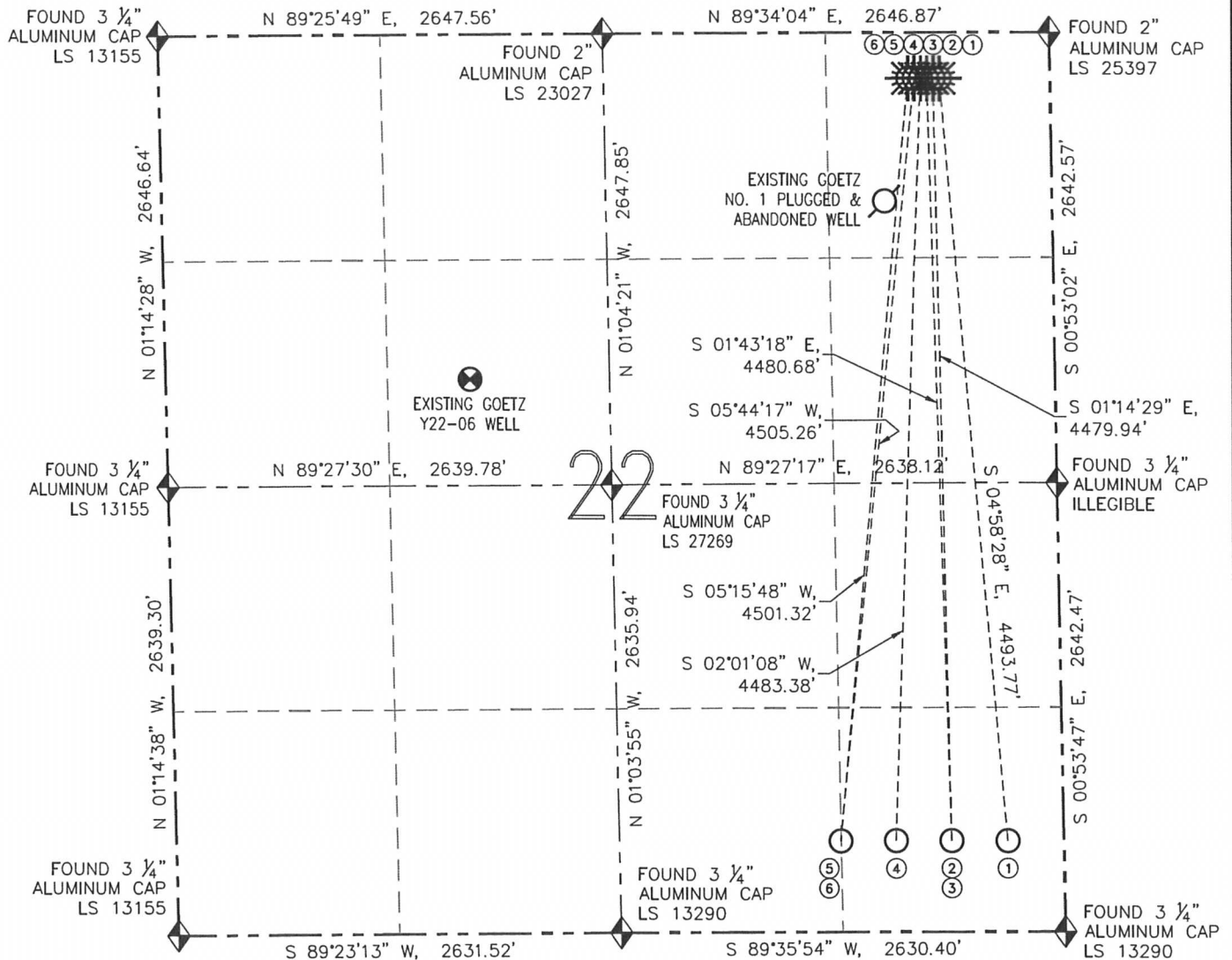
MINNE Y22-72-1HN, 72HN, 72HC, 73-1HN, 73HN & 73HC

THIS MAP DOES NOT REPRESENT A BOUNDARY SURVEY

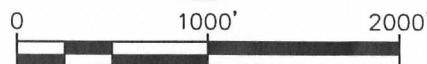
SECTION: 22

TOWNSHIP: 2 NORTH

RANGE: 64 WEST



NO.	WELL NAME	FOOTAGES		LATITUDE	LONGITUDE	1/4-1/4
1	MINNE Y22-72-1HN	BHL: 535' FSL	BHL: 330' FEL	BHL: N 40.11815'	BHL: W 104.52917'	BHL: SE SE
2	MINNE Y22-72HN	BHL: 535' FSL	BHL: 660' FEL	BHL: N 40.11816'	BHL: W 104.53035'	BHL: SE SE
3	MINNE Y22-72HC	BHL: 535' FSL	BHL: 660' FEL	BHL: N 40.11816'	BHL: W 104.53035'	BHL: SE SE
4	MINNE Y22-73-1HN	BHL: 535' FSL	BHL: 990' FEL	BHL: N 40.11816'	BHL: W 104.53153'	BHL: SE SE
5	MINNE Y22-73HN	BHL: 535' FSL	BHL: 1320' FEL	BHL: N 40.11816'	BHL: W 104.53271'	BHL: SW SE
6	MINNE Y22-73HC	BHL: 535' FSL	BHL: 1320' FEL	BHL: N 40.11816'	BHL: W 104.53271'	BHL: SW SE



SCALE: 1" = 1000'



FIELD DATE: 08/21/12
 PLOT DATE: 11/07/12
 DRAWN BY: CJD
 JOB NO.: NE12305
 SHEET NO.: 8 of 11

LEGEND

- PROPOSED WELL
- EXISTING WELL
- BOTTOM HOLE
- ABANDONED WELL
- FOUND MONUMENT

MINNE Y22-72-1HN

R&R ENGINEERS-SURVEYORS, INC. 7352 GREENRIDGE RD. STE. B19, WINDSOR, CO 80550 303-753-6730

MULTI-WELL PAD LOCATION DRAWING

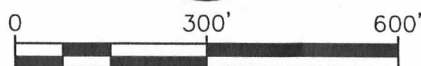
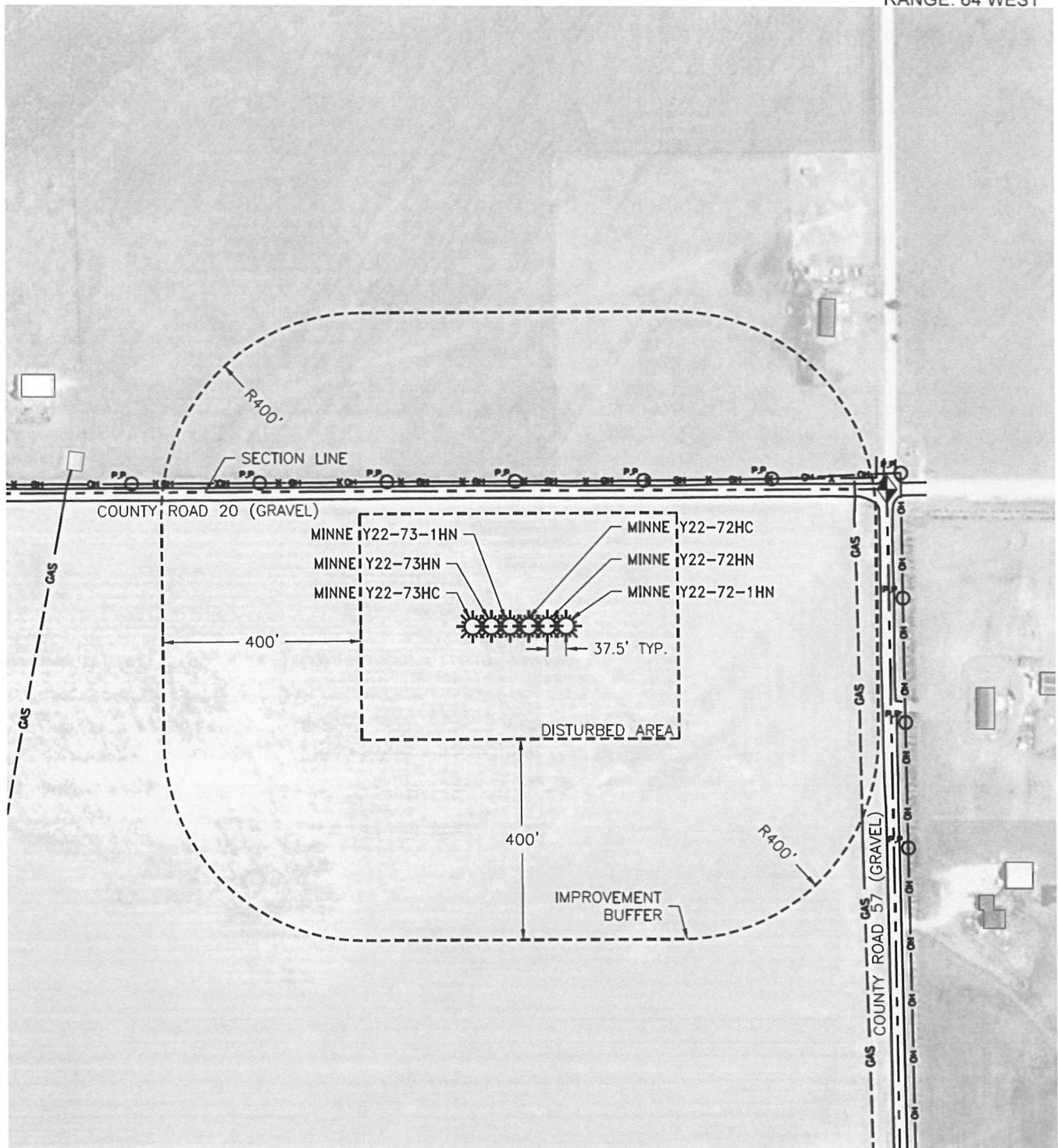
MINNE Y22-72-1HN, 72HN, 72HC, 73-1HN, 73HN & 73HC

THIS MAP DOES NOT REPRESENT A BOUNDARY SURVEY

SECTION: 22

TOWNSHIP: 2 NORTH

RANGE: 64 WEST



SCALE: 1" = 300'



FIELD DATE: 08/21/12
PLOT DATE: 11/07/12
DRAWN BY: CJD
JOB NO.: NE12305
SHEET NO.: 9 of 11

LEGEND

- PROPOSED WELL
- FOUND MONUMENT