

MINNE Y22-77HC

R&R ENGINEERS-SURVEYORS, INC. 7352 GREENRIDGE RD. STE. B19, WINDSOR, CO 80550 303-753-6730

MULTI-WELL PAD DIRECTIONAL LAYOUT

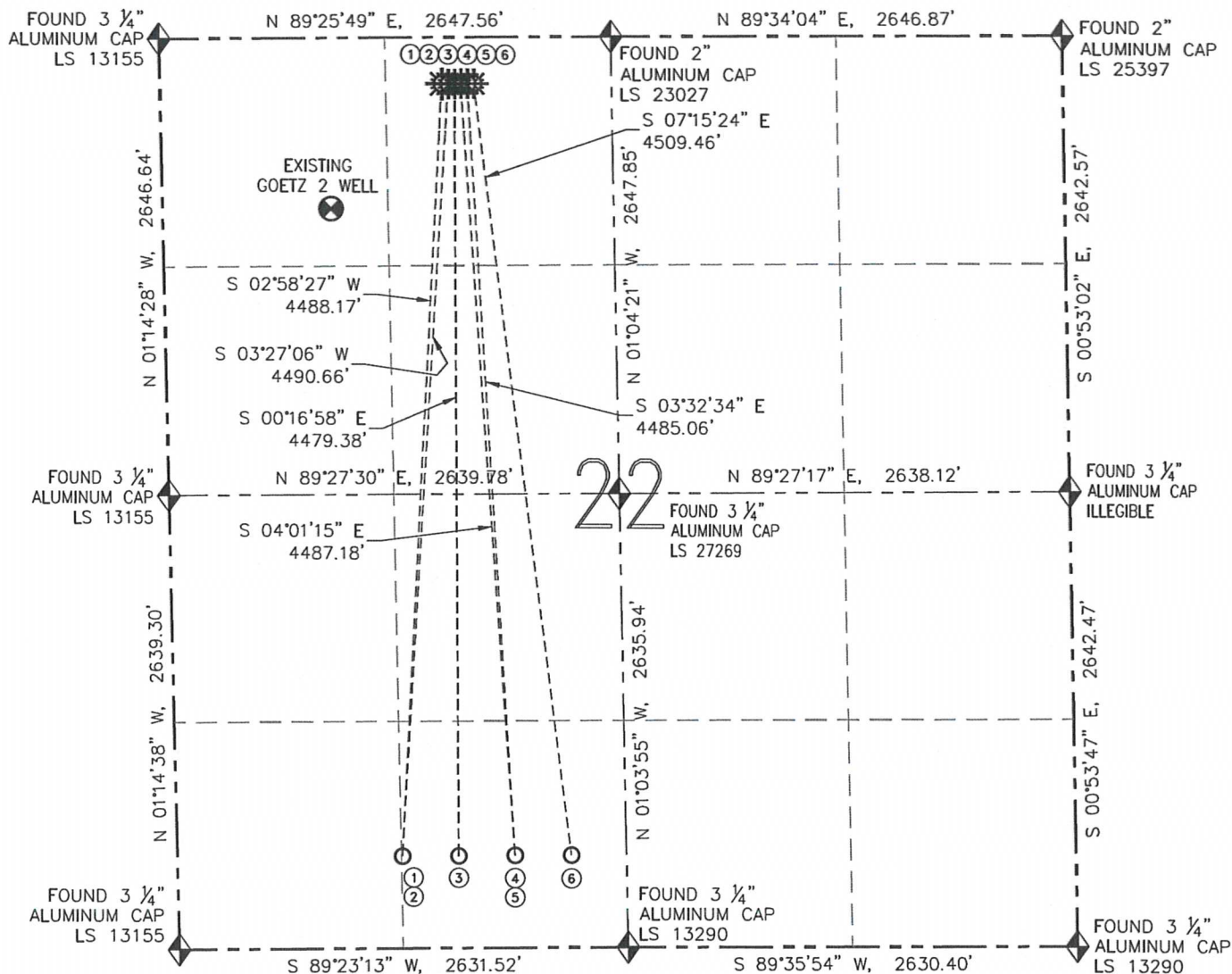
MINNE Y22-77HC, 77HN, 77-1HN, 76HC, 76HN & 76-1HN

THIS MAP DOES NOT REPRESENT A BOUNDARY SURVEY

SECTION: 22

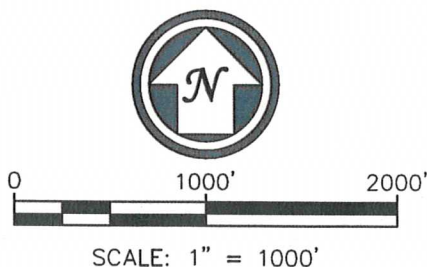
TOWNSHIP: 2 NORTH

RANGE: 64 WEST



NO.	WELL NAME	FOOTAGES		LATITUDE	LONGITUDE	1/4-1/4
1	MINNE Y22-77HC	BHL: 535' FSL	BHL: 1320' FWL	BHL: N 40.11818'	BHL: W 104.54210'	BHL: SE SW
2	MINNE Y22-77HN	BHL: 535' FSL	BHL: 1320' FWL	BHL: N 40.11818'	BHL: W 104.54210'	BHL: SE SW
3	MINNE Y22-77-1HN	BHL: 535' FSL	BHL: 1650' FWL	BHL: N 40.11818'	BHL: W 104.54092'	BHL: SE SW
4	MINNE Y22-76HC	BHL: 535' FSL	BHL: 1980' FWL	BHL: N 40.11818'	BHL: W 104.53974'	BHL: SE SW
5	MINNE Y22-76HN	BHL: 535' FSL	BHL: 1980' FWL	BHL: N 40.11818'	BHL: W 104.53974'	BHL: SE SW
6	MINNE Y22-76-1HN	BHL: 535' FSL	BHL: 2310' FWL	BHL: N 40.11818'	BHL: W 104.53856'	BHL: SE SW

	FIELD DATE: 08/21/12
	PLOT DATE: 11/08/12
	DRAWN BY: CJD
	JOB NO.: NE12322
	SHEET NO.: 8 of 11



LEGEND	
	PROPOSED WELL
	EXISTING WELL
	BOTTOM HOLE
	FOUND MONUMENT

MULTI-WELL PAD LOCATION DRAWING

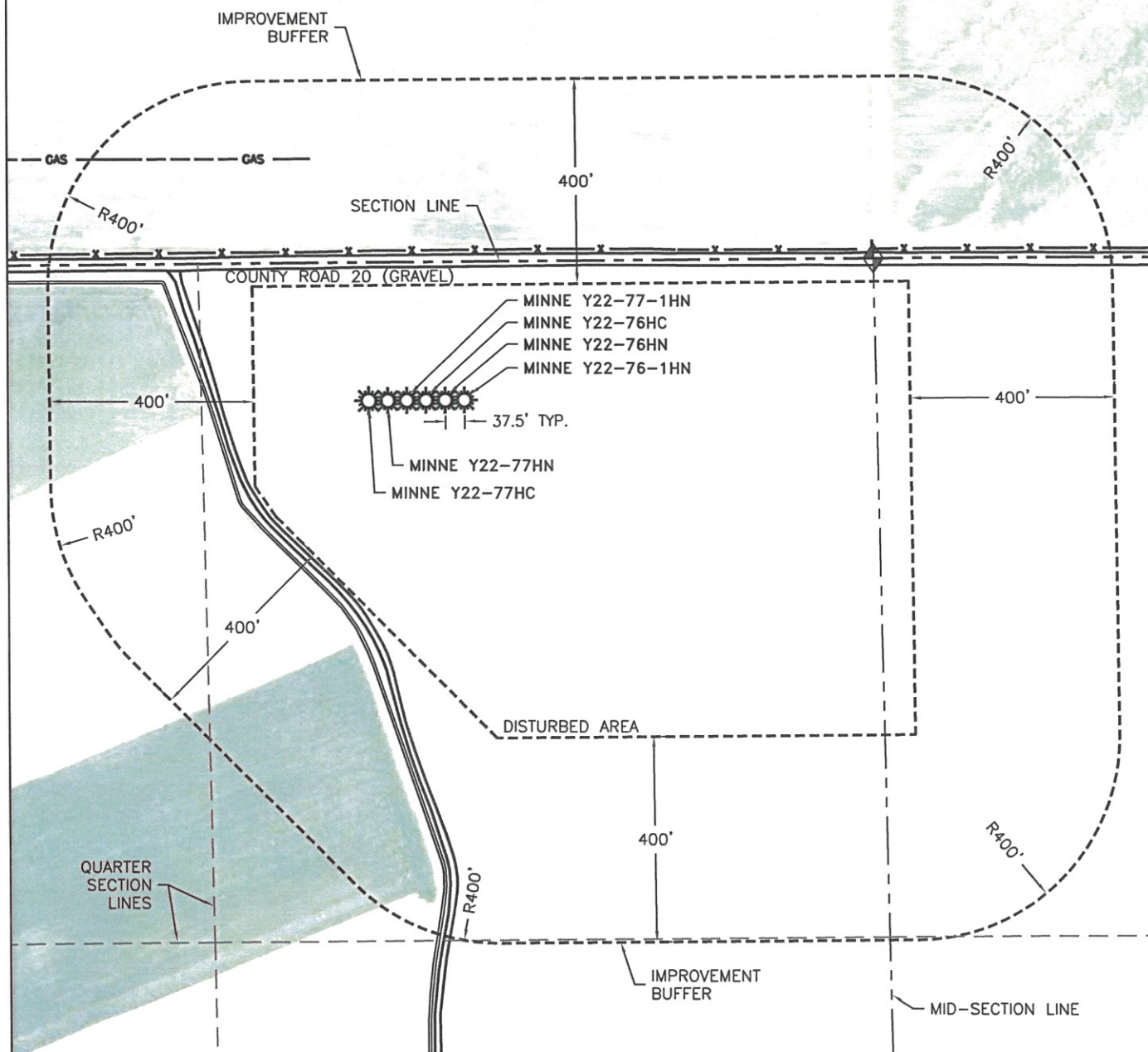
MINNE Y22-77HC, 77HN, 77-1HN, 76HC, 76HN & 76-1HN

THIS MAP DOES NOT REPRESENT A BOUNDARY SURVEY

SECTION: 22

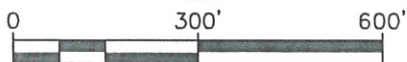
TOWNSHIP: 2 NORTH

RANGE: 64 WEST



ENGINEERS
SURVEYORS

FIELD DATE: 08/21/12
 PLOT DATE: 06/20/13
 DRAWN BY: CJD
 JOB NO.: NE12322
 SHEET NO.: 9 of 11



SCALE: 1" = 300'

LEGEND



PROPOSED WELL



FOUND MONUMENT