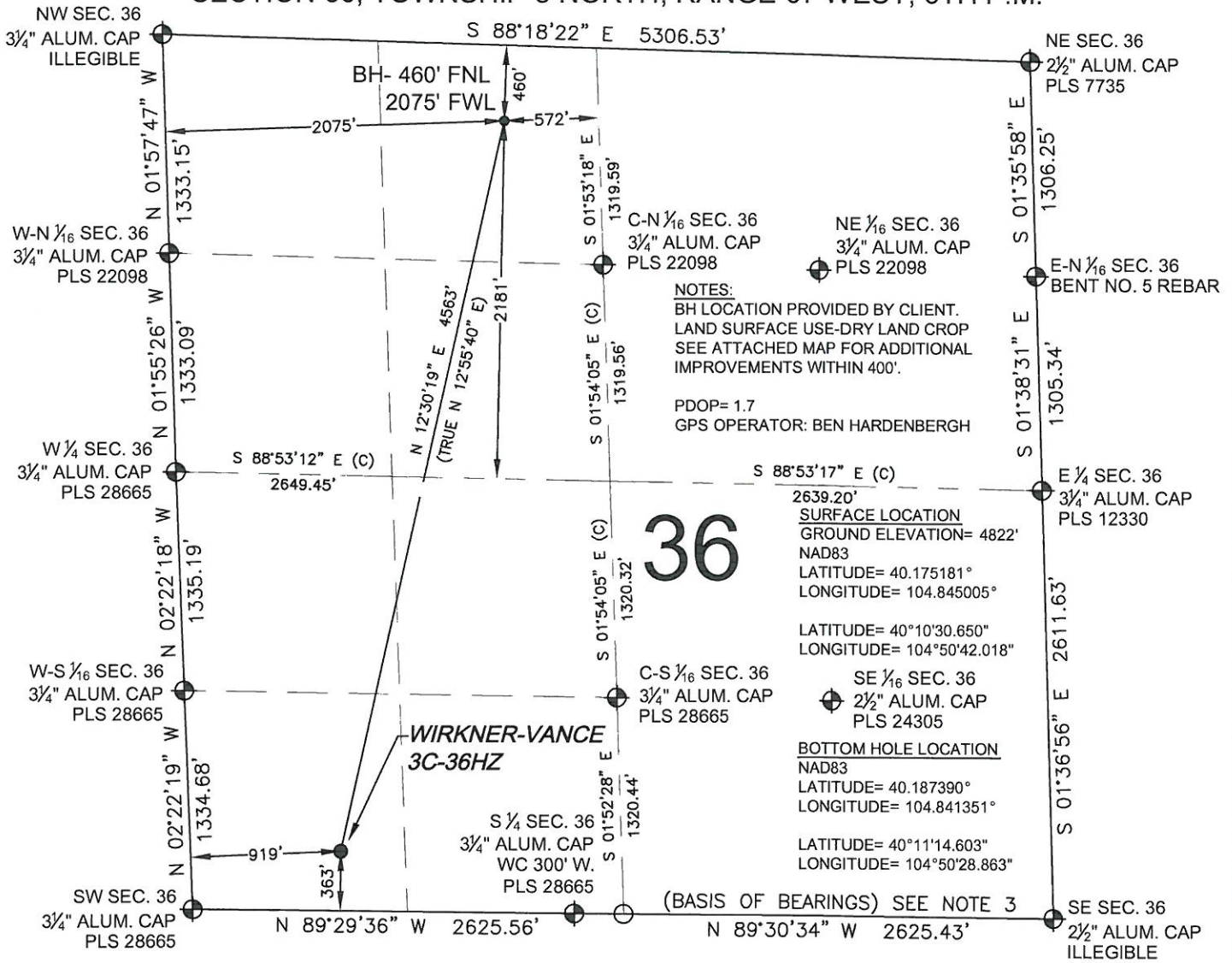


# WELL LOCATION CERTIFICATE: WIRKNER-VANCE 3C-36HZ

SECTION 36, TOWNSHIP 3 NORTH, RANGE 67 WEST, 6TH P.M.



**NOTES:**  
 BH LOCATION PROVIDED BY CLIENT.  
 LAND SURFACE USE- DRY LAND CROP  
 SEE ATTACHED MAP FOR ADDITIONAL  
 IMPROVEMENTS WITHIN 400'.  
 PDOP= 1.7  
 GPS OPERATOR: BEN HARDENBERGH

**36**

2639.20'  
 SURFACE LOCATION  
 GROUND ELEVATION= 4822'  
 NAD83  
 LATITUDE= 40.175181°  
 LONGITUDE= 104.845005°

LATITUDE= 40°10'30.650"  
 LONGITUDE= 104°50'42.018"

SE 1/6 SEC. 36  
 2 1/2" ALUM. CAP  
 PLS 24305

**BOTTOM HOLE LOCATION**  
 NAD83  
 LATITUDE= 40.187390°  
 LONGITUDE= 104.841351°

LATITUDE= 40°11'14.603"  
 LONGITUDE= 104°50'28.863"

WELL WIRKNER-VANCE 3C-36HZ TO BE LOCATED 363' FSL AND 919' FWL

**LEGEND**

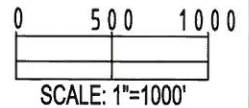
- ⊕ = EXISTING MONUMENT
- ⬤ = PROPOSED WELL
- BH = BOTTOM HOLE
- ⬥ = BOTTOM HOLE
- ◆ = EXISTING WELL

- NOTES:**
- THIS FIELD SURVEY CONFORMS TO THE MINIMUM STANDARDS SET BY THE C.O.G.C.C., RULE NO. 215
  - HORIZONTAL POSITIONS AND ORTHOMETRIC ELEVATIONS SHOWN AT THE WELL HEAD, ARE BASED ON GPS-RTK POSITIONS DERIVED FROM MINIMUM 2-HOUR STATIC OBSERVATIONS CORRECTED BY THE NATIONAL GEODETIC SURVEY ONLINE POSITIONING USER SERVICE, O.P.U.S. DATUM: HORIZONTAL = NAD83/2007, VERTICAL = NAVD88
  - THE BASIS OF BEARINGS ARE STATE PLANE COORDINATE SYSTEM GRID BEARINGS SHOWN HEREON BETWEEN THE DESCRIBED MONUMENTS SHOWN HEREON.
  - GRID DISTANCES ARE SHOWN, AS MEASURED IN THE FIELD, WITH TIES TO WELLS MEASURED PERPENDICULAR TO SECTION LINES.

I, MARK A. HALL, A LICENSED PROFESSIONAL LAND SURVEYOR IN THE STATE OF COLORADO DO HEREBY CERTIFY TO **KERR-MCGEE OIL & GAS ONSHORE LP.** THAT THE SURVEY AND WELL LOCATION CERTIFICATE SHOWN HEREON WERE DONE BY ME OR UNDER MY DIRECT SUPERVISION AND THAT THE DRAWING SHOWN HEREON ACCURATELY DEPICTS THE PROPOSED LOCATION OF THE WELL. THIS CERTIFICATE DOES NOT REPRESENT A LAND SURVEY PLAT OR IMPROVEMENT SURVEY PLAT AS DEFINED BY C.R.S. 38-51-102 AND CANNOT BE RELIED UPON TO DETERMINE OWNERSHIP.



MARK A. HALL, PLS 36073  
 COLORADO LICENSED PROFESSIONAL LAND SURVEYOR  
 FOR AND ON BEHALF OF P.F.S., LLC



|   |                           |  |
|---|---------------------------|--|
| PREPARED BY:<br><br>1801 W. 13th Ave.<br>Denver, CO 80204 | FIELD DATE:<br>05-02-13   | SURFACE LOCATION:                              |
|   | DRAWING DATE:<br>05-16-13 | SW 1/4 SW 1/4,<br>SEC. 36, T3N, R67W, 6TH P.M. |
|   | BY:<br>SMF                | CHECKED:<br>TJN                                |
|   | WELD COUNTY, COLORADO     |  |

NOTICE: ACCORDING TO COLORADO LAW YOU MUST COMMENCE ANY LEGAL ACTION BASED UPON ANY DEFECT IN THIS SURVEY WITHIN THREE YEARS AFTER YOU FIRST DISCOVER SUCH DEFECT. IN NO EVENT MAY ANY ACTION BASED UPON ANY DEFECT IN THIS SURVEY BE COMMENCED MORE THAN TEN YEARS FROM THIS SAID DATE OF THIS CERTIFICATION SHOWN HEREON.