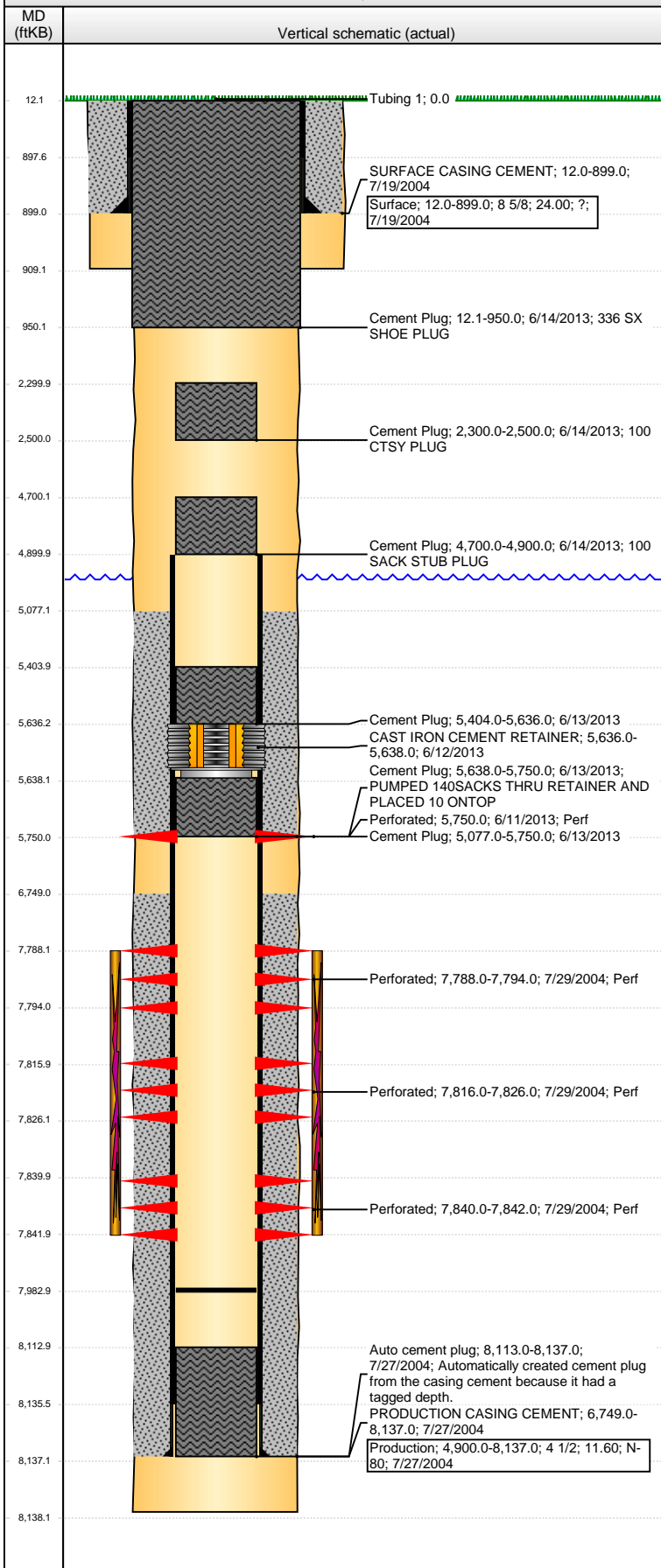


**Well Name: DECHANT 42-19**

VERTICAL - ORIGINAL HOLE, 7/10/2013 9:09:36 AM



## Well Header

API 05-123-22152	Business Unit WATTENBERG	District 15	Well Config VERTICAL
Original KB Elevation (ft) 4,977.00	KB - GL / MSL (ftKB) 12.00	Spud Date 7/17/2004	P & A Date 6/14/2013

## Comment

DISCREPANCY: DR RPT TD DATE 7/26/2004; ST RPT TD DATE 7/25/2004

## Directions To Well

## Congressional Location

Quarter 1	Quarter 2	Quarter 3	Quarter 4	Section	Township	Twntshp N...	Range	Rng E/W Dir
		SE	NE	19	2	N	65	W

## Bottom Hole Location

North-South Distance (ft)	From N or S Line	East-West Distance (ft)	From E or W Line
---------------------------	------------------	-------------------------	------------------

## Plug Back Total Depths

Date	Depth (ftKB)	Method	Com
7/29/2004	8,113.0	CASED HOLE LOG	DEPTH LOGGER ON CBL
7/31/2004	7,983.0	TAG	TAGGED TO LAND TUBING

## Wellbore Sections

Section Des	Size (in)	Act Top (ftKB)	Act Btm (ftKB)
SURFACE	12 1/4	12.0	909.0
PRODUCTION	7 7/8	909.0	8,138.0

## Zone Statuses

Zone Name	Status Date	Status	Job
J SAND	8/4/2004	PR	DRILLING/COMPLETION - ORIGINAL, 7/17/2004 00:00
J SAND	6/14/2013	P&A	ABANDON WELL, 6/7/2013 17:00

## Casing Strings

### Surface, 899.0ftKB

Casing Description	Run Date	OD (in)	Wt/Len (l...)	Grade	Top (ftKB)	MD (ftKB)
Surface	7/19/2004	8 5/8	24.00	?	12.0	899.0

### Production, 8,137.0ftKB

Casing Description	Run Date	OD (in)	Wt/Len (l...)	Grade	Top (ftKB)	MD (ftKB)
Production	7/27/2004	4 1/2	11.60	N-80	12.0	8,137.0

## Cement

Description	Top Depth (ftKB)	Bottom Depth (ftKB)
SURFACE CASING CEMENT	12.0	899.0
PRODUCTION CASING CEMENT	6,749.0	8,137.0
Cement Plug	5,404.0	5,636.0
Cement Plug	5,638.0	5,750.0
Cement Plug	5,077.0	5,750.0
Cement Plug	2,300.0	2,500.0
Cement Plug	4,700.0	4,900.0
Cement Plug	12.1	950.0

## Tubing Components

Item Des	OD (in)	Wt (lb/ft)	Grade	Jts	Len (ft)	Btm (ftKB)	Btm (TVD) (ftKB)

## Perforation Data

Zone	Bnch/St g	Entered Shot Total	Top (ftKB)	Btm (ftKB)	Date
J SAND, ORIGINAL HOLE		24	5,750.00	5,750.00	6/11/2013
J SAND, ORIGINAL HOLE		40	7,788.00	7,794.00	7/29/2004
J SAND, ORIGINAL HOLE		40	7,816.00	7,826.00	7/29/2004
J SAND, ORIGINAL HOLE		8	7,840.00	7,842.00	7/29/2004

## Stimulations & Treatments

Date	Zone	Primary Job Type
7/30/2004	J SAND, ORIGINAL HOLE	DRILLING/COMPLETION - ORIGINAL
Technical Result	Tech Result Details	Tech Result Note

## Comment

**Well Name: DECHANT 42-19**

VERTICAL - ORIGINAL HOLE, 7/10/2013 9:09:36 AM

## Other In Hole

Run Date	Des	OD (in)	Top (ftKB)	Btm (ftKB)
6/12/2013	CAST IRON CEMENT RETAINER	3.99	5,636.0	5,638.0

## Logs

Date	Type	Top (ftKB)	Btm (ftKB)
7/26/2004	TRIPLE COMBO	899.0	8,138.0
7/29/2004	CBL/CCL/GR	6,600.0	8,108.0
2/18/2013	GYRO	12.0	7,700.0

