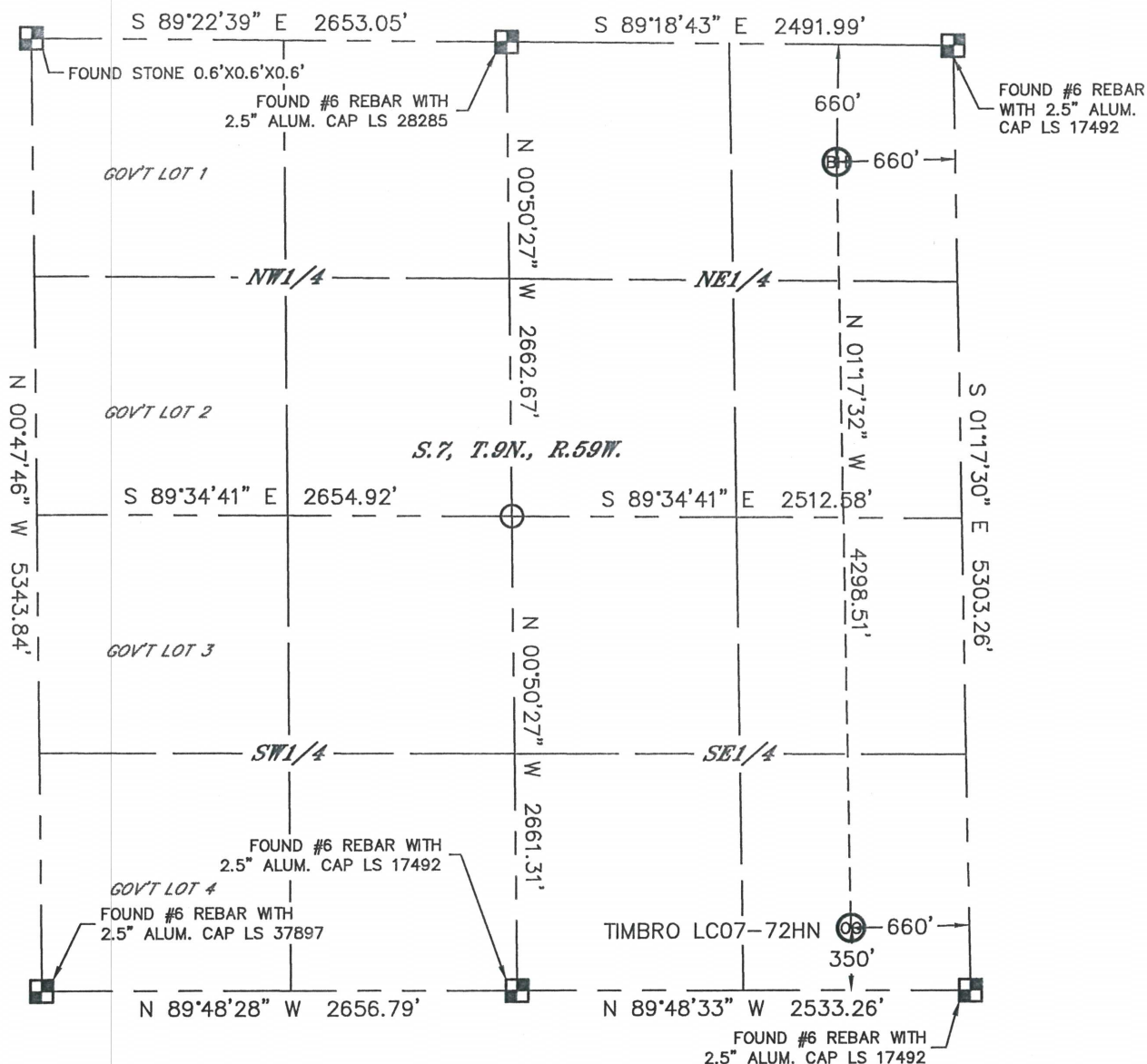
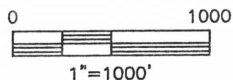


## WELL LOCATION CERTIFICATE

THIS MAP DOES NOT REPRESENT A BOUNDARY SURVEY

SECTION: 7  
TOWNSHIP: 9N  
RANGE: 59WIn accordance with a request from Cody Ball with Noble Energy Inc.Lat40°, Inc. has determined the surface location of the TIMBRO LC07-72HN to be 350' from the SOUTH line and 660' from the EAST line and the bottom hole to be 660' from the NORTH line and 660' from the EAST line as measured at right angles from the section lines of Section 7, Township 9 North, Range 59 West of the Sixth Principal Meridian, County of Weld, State of Colorado.I hereby state that this Well Location Certificate was prepared by me, or under my direct supervision, that the fieldwork was completed on 6/3/2013, for and on behalf of Noble Energy Inc. That this is not a Land Survey Plat or an Improvement Survey Plat, and that it is not to be relied upon for establishment of fence, building, or other future improvement lines.

## NOTE:

- 1) Bearings shown are Grid Bearings of the Colorado State Plane Coordinate System, North Zone, North American Datum 1983/2007. The lined dimensions as contained herein are based upon the "U.S. Survey Foot."
- 2) Ground elevations are based on an observed GPS elevation (NAVD 1988 DATUM).
- 3) NEAREST EXISTING WELL: NO EXISTING WELLS IN SECTION.
- 4) IMPROVEMENTS: See LOCATION DRAWING for all visible Improvements within 400' of disturbed area.
- 5) SURFACE USE: RANGELAND
- 6) INSTRUMENT OPERATOR: BRIAN ROTTINGHAUS

## NOTE

According to Colorado law, you must commence any legal action based upon any defect in this W.L.C. within three years after you discover such defect. In no event, may any action based upon any defect in this survey be commenced more than ten years after the date of the certificate shown hereon. (13-80-105 C.R.S.)

## LEGEND

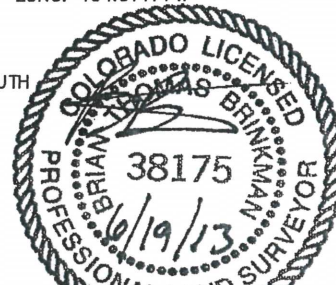
- = ALIQUOT MONUMENT AS DESCRIBED  
○ = CALCULATED POSITION

## SURFACE LOCATION

LAT: 40.75872°N  
LONG: 104.01405°W  
PDOP: 2.8  
ELEV: 5033'  
1/4, 1/4: SE1/4SE1/4  
NEAREST PROPERTY LINE: 350' SOUTH

## BOTTOM HOLE

LAT: 40.77052°N  
LONG: 104.01414°W

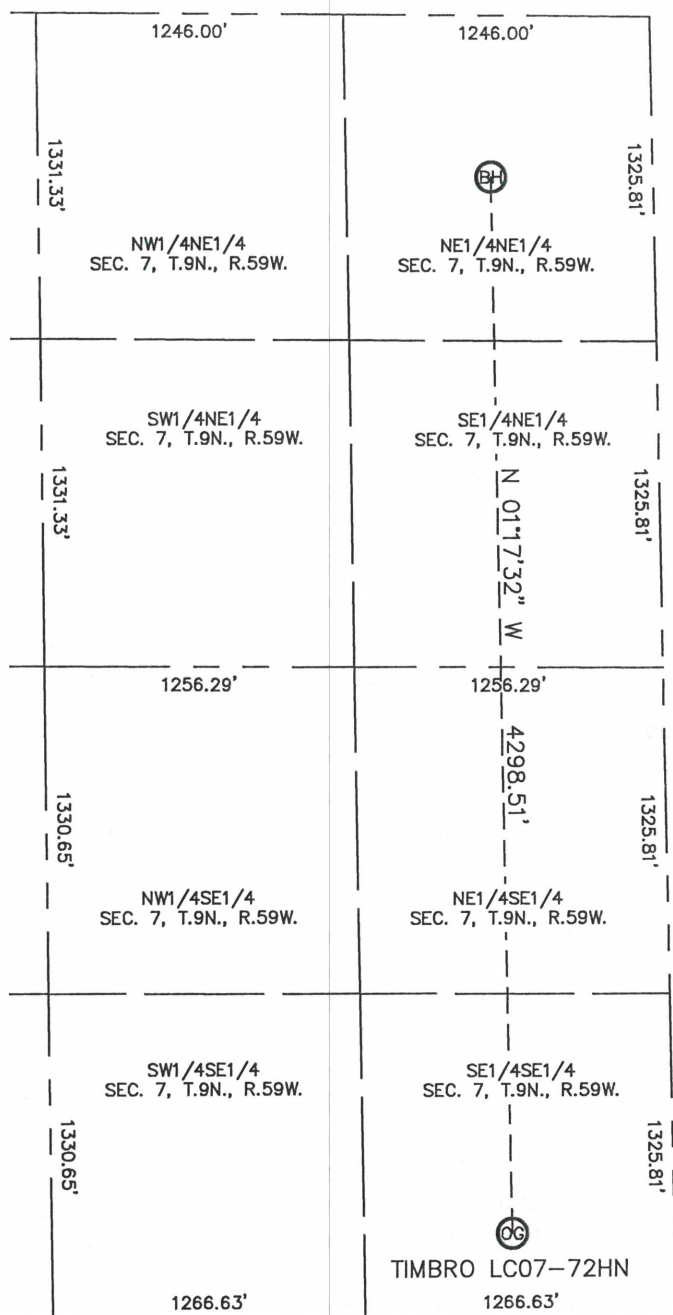


Brian T. Brinkman—On behalf of Lat40°, Inc.  
Colorado Licensed Professional Land Surveyor No. 38175  
DATE: 6/19/2013  
PROJECT#: 2013081

# SITE SKETCH

TIMBRO LC07-72HN

SECTION: 7  
TOWNSHIP: 9N  
RANGE: 59W



NOTE: NO EXISTING WELLS ADJACENT  
TO PROPOSED WELL BORE.

