

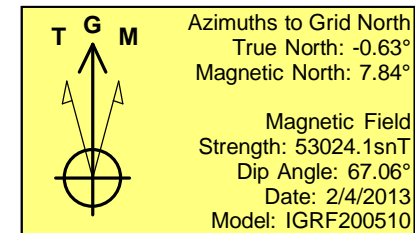
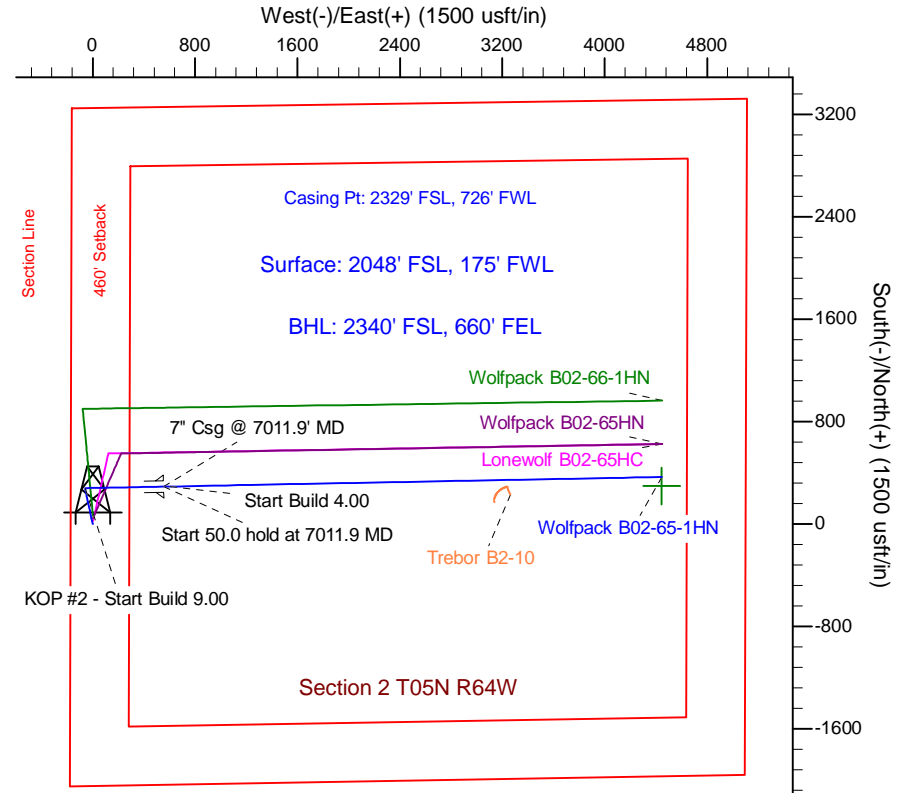
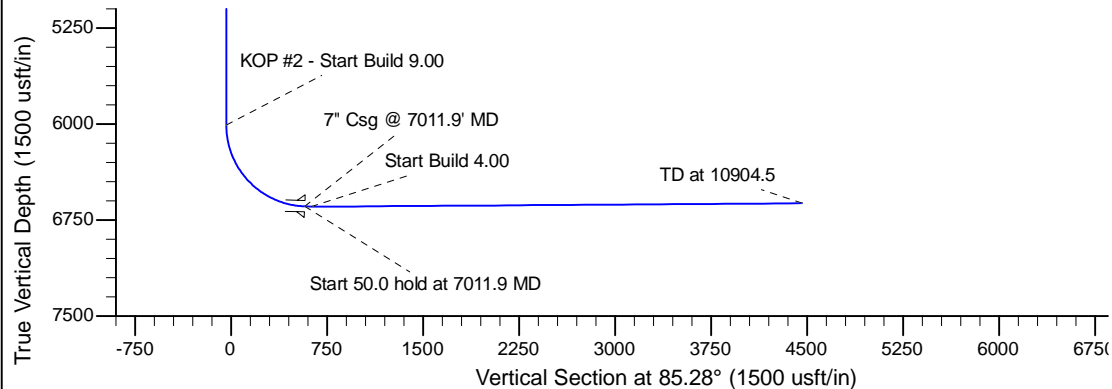
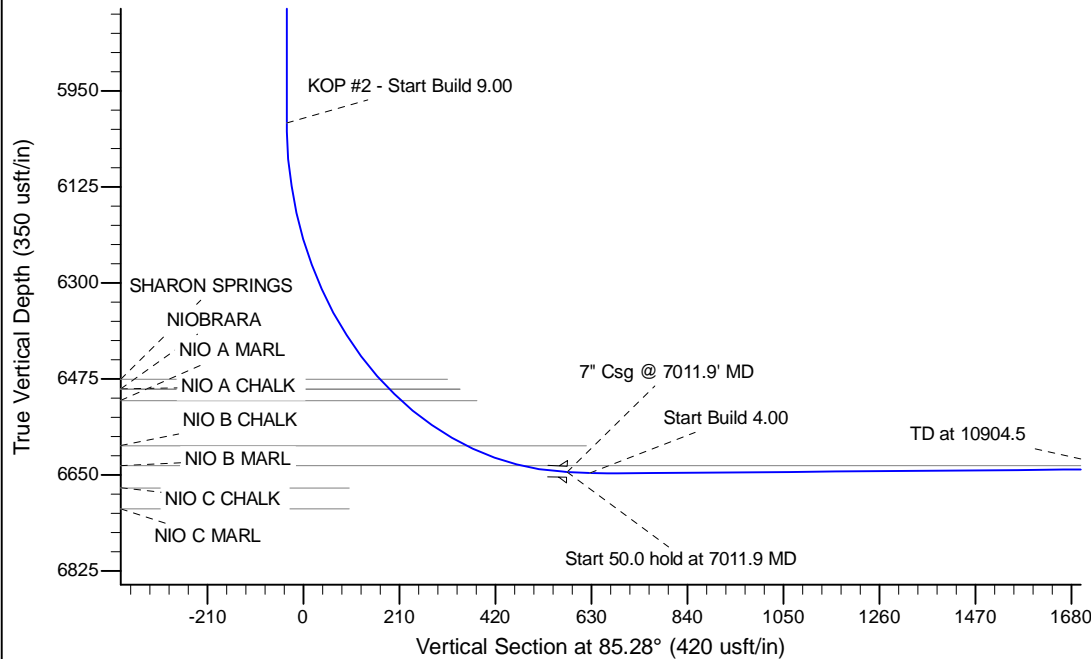
Project: Wattenberg Field  
 Site: B (Sec.2-T05N-R64W) Weld County, CO  
 Well: Wolfpack B02-65-1HN  
 Wellbore: Original Drilling  
 Design: APD - Rev 1

# Northern Region Drilling - Working

Geodetic System: US State Plane 1983  
 Datum: North American Datum 1983  
 Ellipsoid: GRS 1980  
 Zone: Colorado Northern Zone  
 System Datum: Mean Sea Level

SECTION DETAILS

Sec	MD	Inc	Azi	TVD	+N/-S	+E/-W	Dleg	TFace	VSecl	Target
1	0.0	0.00	0.00	0.0	0.0	0.0	0.00	0.00	0.0	
2	3000.0	0.00	0.00	3000.0	0.0	0.0	0.00	0.00	0.0	
3	3600.0	12.00	347.91	3595.6	61.2	-13.1	2.00	347.91	-8.0	
4	4375.1	12.00	347.91	4353.8	218.8	-46.9	0.00	0.00	-28.7	
5	4975.1	0.00	0.00	4949.4	280.0	-60.0	2.00	180.00	-36.8	
6	5525.7	0.00	0.00	5500.0	280.0	-60.0	0.00	0.00	-36.8	
7	6034.2	0.00	0.00	6008.5	280.0	-60.0	0.00	0.00	-36.8	
8	7011.9	88.89	88.89	6644.7	291.9	554.3	9.00	88.89	576.4	
9	7061.9	88.00	88.89	6646.4	292.8	604.2	0.00	0.00	626.3	
10	7121.9	90.40	88.89	6647.3	294.0	664.2	4.00	0.00	686.2	
11	10904.5	90.40	88.89	6620.9	367.0	4446.0	0.00	0.00	4461.1	



WELL DETAILS: Wolfpack B02-65-1HN				
Ground Level: 4625.0				
0.0	0.0	Northing	Easting	Latitude
		1399775.39	3271070.50	40.426700
				Longitude
				-104.526310
Plan: APD - Rev 1 (Wolfpack B02-65-1HN/Original Drilling)				
Created By: Shailey Jewell		Date: 9:02, June 27 2013		
Checked: _____		Date: _____		
Reviewed: _____		Date: _____		
Approved: _____		Date: _____		