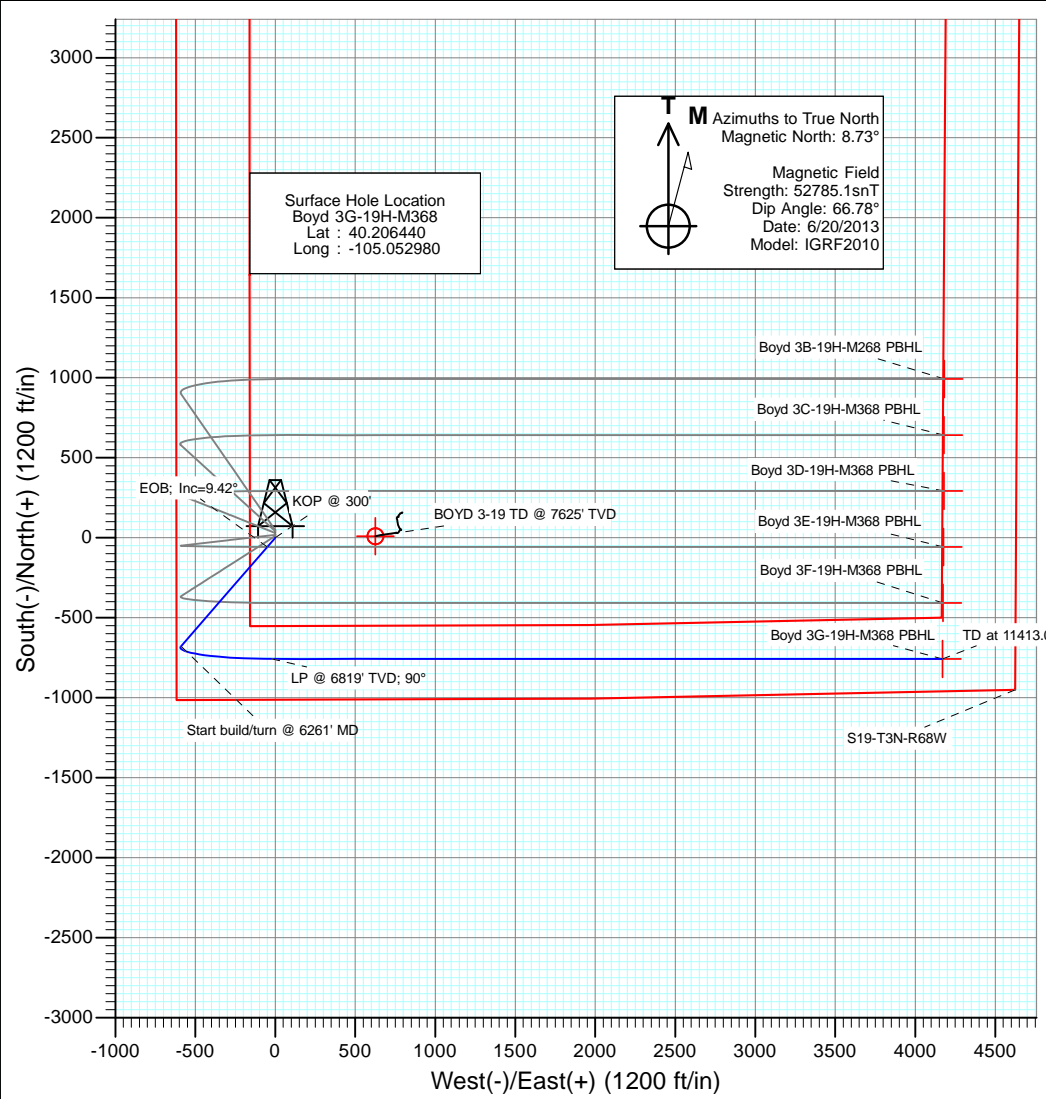
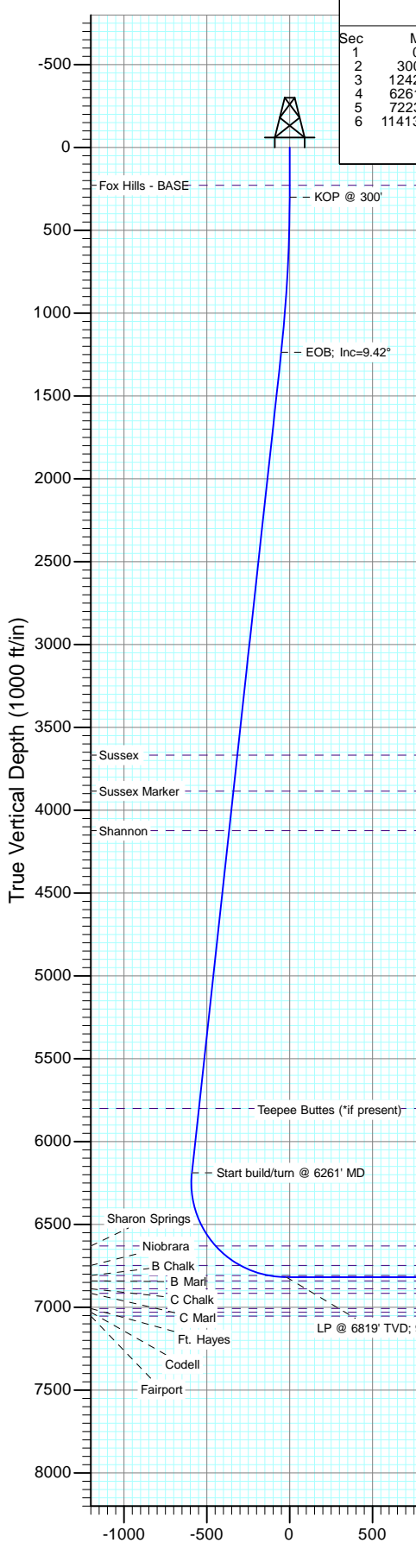




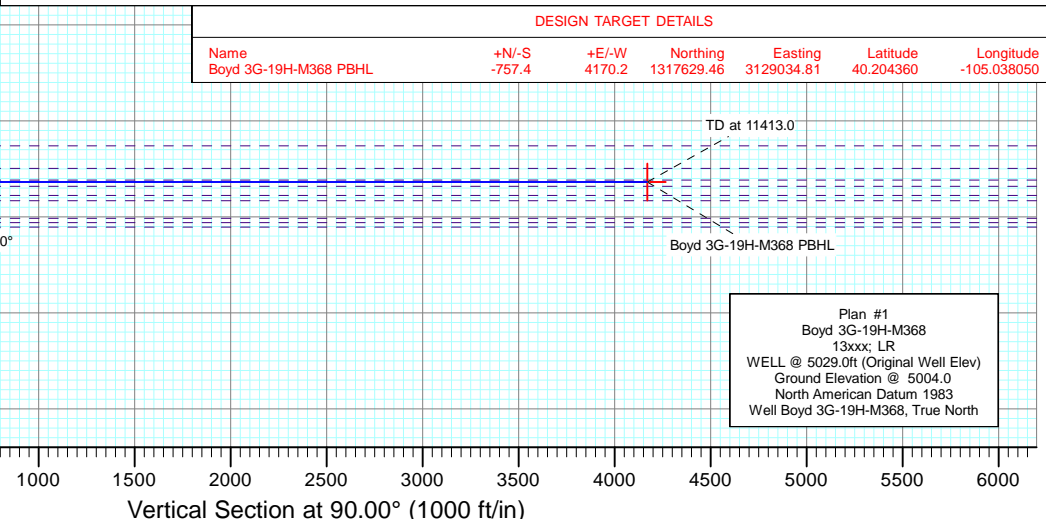
Project: DJ Wattenberg
 Site: S19-T3N-R68W (Boyd)
 Well: Boyd 3G-19H-M368
 Wellbore: Hz
 Design: Plan #1



Sec	MD	Inc	Azi	TVD	+N/-S	+E/-W	Dleg	TFace	VSec	Target	Annotation
1	0.0	0.00	0.00	0.0	0.0	0.0	0.00	0.00	0.0		
2	300.0	0.00	0.00	300.0	0.0	0.0	0.00	0.00	0.0		KOP @ 300'
3	1242.0	9.42	220.98	1237.8	-58.3	-50.7	1.00	220.98	-50.7		EOB; Inc=9.42°
4	6261.4	9.42	220.98	6189.5	-678.5	-589.5	0.00	0.00	-589.5		Start build/turn @ 6261' MD
5	7223.0	90.00	90.00	6819.0	-757.4	-19.8	10.00	-130.60	-19.8		LP @ 6819' TVD; 90°
6	11413.0	90.00	90.00	6819.0	-757.4	4170.2	0.00	0.00	4170.2	Boyd 3G-19H-M368 PBHL	TD at 11413.0



DESIGN TARGET DETAILS						
Name	+N/-S	+E/-W	Northing	Easting	Latitude	Longitude
Boyd 3G-19H-M368 PBHL	-757.4	4170.2	1317629.46	3129034.81	40.204360	-105.038050



Planning Report

Database: USA EDM 5000 Multi Users DB	Local Co-ordinate Reference: Well Boyd 3G-19H-M368
Company: EnCana Oil & Gas (USA) Inc	TVD Reference: WELL @ 5029.0ft (Original Well Elev)
Project: DJ Wattenberg	MD Reference: WELL @ 5029.0ft (Original Well Elev)
Site: S19-T3N-R68W (Boyd)	North Reference: True
Well: Boyd 3G-19H-M368	Survey Calculation Method: Minimum Curvature
Wellbore: Hz	
Design: Plan #1	

Project DJ Wattenberg		
Map System: US State Plane 1983	System Datum: Mean Sea Level	
Geo Datum: North American Datum 1983		
Map Zone: Colorado Northern Zone		

Site S19-T3N-R68W (Boyd)					
Site Position:		Northing:	1,318,413.14 ft	Latitude:	40.206570
From: Lat/Long		Easting:	3,124,860.64 ft	Longitude:	-105.052980
Position Uncertainty:	0.0 ft	Slot Radius:	13.200 in	Grid Convergence:	0.29 °

Well Boyd 3G-19H-M368						
Well Position	+N/-S	0.0 ft	Northing:	1,318,365.78 ft	Latitude:	40.206440
	+E/-W	0.0 ft	Easting:	3,124,860.88 ft	Longitude:	-105.052980
Position Uncertainty		0.0 ft	Wellhead Elevation:	ft	Ground Level:	5,004.0 ft

Wellbore Hz					
Magnetics	Model Name	Sample Date	Declination	Dip Angle	Field Strength
	IGRF2010	6/20/2013	(°)	(°)	(nT)
			8.73	66.78	52,785

Design Plan #1				
Audit Notes:				
Version:	Phase:	PLAN	Tie On Depth:	0.0
Vertical Section:	Depth From (TVD)	+N/-S	+E/-W	Direction
	(ft)	(ft)	(ft)	(°)
	0.0	0.0	0.0	90.00

Plan Sections										
Measured Depth (ft)	Inclination (°)	Azimuth (°)	Vertical Depth (ft)	+N/-S (ft)	+E/-W (ft)	Dogleg Rate (°/100ft)	Build Rate (°/100ft)	Turn Rate (°/100ft)	TFO (°)	Target
0.0	0.00	0.00	0.0	0.0	0.0	0.00	0.00	0.00	0.00	
300.0	0.00	0.00	300.0	0.0	0.0	0.00	0.00	0.00	0.00	
1,242.0	9.42	220.98	1,237.8	-58.3	-50.7	1.00	1.00	0.00	220.98	
6,261.4	9.42	220.98	6,189.5	-678.5	-589.5	0.00	0.00	0.00	0.00	
7,223.0	90.00	90.00	6,819.0	-757.4	-19.8	10.00	8.38	-13.62	-130.60	
11,413.0	90.00	90.00	6,819.0	-757.4	4,170.2	0.00	0.00	0.00	0.00	Boyd 3G-19H-M368 F

Planning Report

Database:	USA EDM 5000 Multi Users DB	Local Co-ordinate Reference:	Well Boyd 3G-19H-M368
Company:	EnCana Oil & Gas (USA) Inc	TVD Reference:	WELL @ 5029.0ft (Original Well Elev)
Project:	DJ Wattenberg	MD Reference:	WELL @ 5029.0ft (Original Well Elev)
Site:	S19-T3N-R68W (Boyd)	North Reference:	True
Well:	Boyd 3G-19H-M368	Survey Calculation Method:	Minimum Curvature
Wellbore:	Hz		
Design:	Plan #1		

Planned Survey									
Measured Depth (ft)	Inclination (°)	Azimuth (°)	Vertical Depth (ft)	+N/-S (ft)	+E/-W (ft)	Vertical Section (ft)	Dogleg Rate (°/100ft)	Build Rate (°/100ft)	Comments / Formations
0.0	0.00	0.00	0.0	0.0	0.0	0.0	0.00	0.00	
100.0	0.00	0.00	100.0	0.0	0.0	0.0	0.00	0.00	
200.0	0.00	0.00	200.0	0.0	0.0	0.0	0.00	0.00	
229.0	0.00	0.00	229.0	0.0	0.0	0.0	0.00	0.00	Fox Hills - BASE
300.0	0.00	0.00	300.0	0.0	0.0	0.0	0.00	0.00	KOP @ 300'
400.0	1.00	220.98	400.0	-0.7	-0.6	-0.6	1.00	1.00	
500.0	2.00	220.98	500.0	-2.6	-2.3	-2.3	1.00	1.00	
600.0	3.00	220.98	599.9	-5.9	-5.1	-5.1	1.00	1.00	
700.0	4.00	220.98	699.7	-10.5	-9.2	-9.2	1.00	1.00	
800.0	5.00	220.98	799.4	-16.5	-14.3	-14.3	1.00	1.00	
900.0	6.00	220.98	898.9	-23.7	-20.6	-20.6	1.00	1.00	
1,000.0	7.00	220.98	998.3	-32.2	-28.0	-28.0	1.00	1.00	
1,100.0	8.00	220.98	1,097.4	-42.1	-36.6	-36.6	1.00	1.00	
1,200.0	9.00	220.98	1,196.3	-53.3	-46.3	-46.3	1.00	1.00	
1,242.0	9.42	220.98	1,237.8	-58.3	-50.7	-50.7	1.00	1.00	EOB; Inc=9.42°
1,300.0	9.42	220.98	1,295.0	-65.5	-56.9	-56.9	0.00	0.00	
1,400.0	9.42	220.98	1,393.6	-77.8	-67.6	-67.6	0.00	0.00	
1,500.0	9.42	220.98	1,492.3	-90.2	-78.4	-78.4	0.00	0.00	
1,600.0	9.42	220.98	1,590.9	-102.6	-89.1	-89.1	0.00	0.00	
1,700.0	9.42	220.98	1,689.6	-114.9	-99.8	-99.8	0.00	0.00	
1,800.0	9.42	220.98	1,788.2	-127.3	-110.6	-110.6	0.00	0.00	
1,900.0	9.42	220.98	1,886.9	-139.6	-121.3	-121.3	0.00	0.00	
2,000.0	9.42	220.98	1,985.5	-152.0	-132.0	-132.0	0.00	0.00	
2,100.0	9.42	220.98	2,084.2	-164.3	-142.8	-142.8	0.00	0.00	
2,200.0	9.42	220.98	2,182.8	-176.7	-153.5	-153.5	0.00	0.00	
2,300.0	9.42	220.98	2,281.5	-189.0	-164.2	-164.2	0.00	0.00	
2,400.0	9.42	220.98	2,380.1	-201.4	-175.0	-175.0	0.00	0.00	
2,500.0	9.42	220.98	2,478.8	-213.8	-185.7	-185.7	0.00	0.00	
2,600.0	9.42	220.98	2,577.4	-226.1	-196.4	-196.4	0.00	0.00	
2,700.0	9.42	220.98	2,676.1	-238.5	-207.2	-207.2	0.00	0.00	
2,800.0	9.42	220.98	2,774.8	-250.8	-217.9	-217.9	0.00	0.00	
2,900.0	9.42	220.98	2,873.4	-263.2	-228.7	-228.7	0.00	0.00	
3,000.0	9.42	220.98	2,972.1	-275.5	-239.4	-239.4	0.00	0.00	
3,100.0	9.42	220.98	3,070.7	-287.9	-250.1	-250.1	0.00	0.00	
3,200.0	9.42	220.98	3,169.4	-300.2	-260.9	-260.9	0.00	0.00	
3,300.0	9.42	220.98	3,268.0	-312.6	-271.6	-271.6	0.00	0.00	
3,400.0	9.42	220.98	3,366.7	-325.0	-282.3	-282.3	0.00	0.00	
3,500.0	9.42	220.98	3,465.3	-337.3	-293.1	-293.1	0.00	0.00	
3,600.0	9.42	220.98	3,564.0	-349.7	-303.8	-303.8	0.00	0.00	
3,700.0	9.42	220.98	3,662.6	-362.0	-314.5	-314.5	0.00	0.00	
3,705.5	9.42	220.98	3,668.0	-362.7	-315.1	-315.1	0.00	0.00	Sussex
3,800.0	9.42	220.98	3,761.3	-374.4	-325.3	-325.3	0.00	0.00	
3,900.0	9.42	220.98	3,859.9	-386.7	-336.0	-336.0	0.00	0.00	
3,925.4	9.42	220.98	3,885.0	-389.9	-338.7	-338.7	0.00	0.00	Sussex Marker
4,000.0	9.42	220.98	3,958.6	-399.1	-346.7	-346.7	0.00	0.00	
4,100.0	9.42	220.98	4,057.2	-411.5	-357.5	-357.5	0.00	0.00	
4,167.7	9.42	220.98	4,124.0	-419.8	-364.7	-364.7	0.00	0.00	Shannon
4,200.0	9.42	220.98	4,155.9	-423.8	-368.2	-368.2	0.00	0.00	
4,300.0	9.42	220.98	4,254.5	-436.2	-378.9	-378.9	0.00	0.00	
4,400.0	9.42	220.98	4,353.2	-448.5	-389.7	-389.7	0.00	0.00	
4,500.0	9.42	220.98	4,451.8	-460.9	-400.4	-400.4	0.00	0.00	
4,600.0	9.42	220.98	4,550.5	-473.2	-411.1	-411.1	0.00	0.00	

Planning Report

Database:	USA EDM 5000 Multi Users DB	Local Co-ordinate Reference:	Well Boyd 3G-19H-M368
Company:	EnCana Oil & Gas (USA) Inc	TVD Reference:	WELL @ 5029.0ft (Original Well Elev)
Project:	DJ Wattenberg	MD Reference:	WELL @ 5029.0ft (Original Well Elev)
Site:	S19-T3N-R68W (Boyd)	North Reference:	True
Well:	Boyd 3G-19H-M368	Survey Calculation Method:	Minimum Curvature
Wellbore:	Hz		
Design:	Plan #1		

Planned Survey									
Measured Depth (ft)	Inclination (°)	Azimuth (°)	Vertical Depth (ft)	+N/-S (ft)	+E/-W (ft)	Vertical Section (ft)	Dogleg Rate (°/100ft)	Build Rate (°/100ft)	Comments / Formations
4,700.0	9.42	220.98	4,649.1	-485.6	-421.9	-421.9	0.00	0.00	
4,800.0	9.42	220.98	4,747.8	-497.9	-432.6	-432.6	0.00	0.00	
4,900.0	9.42	220.98	4,846.4	-510.3	-443.3	-443.3	0.00	0.00	
5,000.0	9.42	220.98	4,945.1	-522.7	-454.1	-454.1	0.00	0.00	
5,100.0	9.42	220.98	5,043.7	-535.0	-464.8	-464.8	0.00	0.00	
5,200.0	9.42	220.98	5,142.4	-547.4	-475.5	-475.5	0.00	0.00	
5,300.0	9.42	220.98	5,241.0	-559.7	-486.3	-486.3	0.00	0.00	
5,400.0	9.42	220.98	5,339.7	-572.1	-497.0	-497.0	0.00	0.00	
5,500.0	9.42	220.98	5,438.3	-584.4	-507.7	-507.7	0.00	0.00	
5,600.0	9.42	220.98	5,537.0	-596.8	-518.5	-518.5	0.00	0.00	
5,700.0	9.42	220.98	5,635.6	-609.1	-529.2	-529.2	0.00	0.00	
5,800.0	9.42	220.98	5,734.3	-621.5	-540.0	-540.0	0.00	0.00	
5,866.6	9.42	220.98	5,800.0	-629.7	-547.1	-547.1	0.00	0.00	Teepee Buttes (*if present)
5,900.0	9.42	220.98	5,832.9	-633.9	-550.7	-550.7	0.00	0.00	
6,000.0	9.42	220.98	5,931.6	-646.2	-561.4	-561.4	0.00	0.00	
6,100.0	9.42	220.98	6,030.2	-658.6	-572.2	-572.2	0.00	0.00	
6,200.0	9.42	220.98	6,128.9	-670.9	-582.9	-582.9	0.00	0.00	
6,261.4	9.42	220.98	6,189.5	-678.5	-589.5	-589.5	0.00	0.00	Start build/turn @ 6261' MD
6,300.0	7.50	197.92	6,227.7	-683.3	-592.3	-592.3	10.00	-4.98	
6,400.0	10.49	132.59	6,326.7	-695.7	-587.6	-587.6	10.00	2.99	
6,500.0	19.04	111.28	6,423.3	-707.8	-565.7	-565.7	10.00	8.56	
6,600.0	28.53	103.32	6,514.7	-719.2	-527.1	-527.1	10.00	9.49	
6,700.0	38.27	99.13	6,598.1	-729.7	-473.2	-473.2	10.00	9.74	
6,741.8	42.37	97.89	6,630.0	-733.7	-446.4	-446.4	10.00	9.81	Sharon Springs
6,800.0	48.10	96.45	6,671.0	-738.8	-405.4	-405.4	10.00	9.85	
6,900.0	57.98	94.49	6,731.0	-746.3	-326.0	-326.0	10.00	9.88	
6,933.6	61.30	93.93	6,748.0	-748.5	-297.1	-297.1	10.00	9.90	Niobrara
7,000.0	67.88	92.92	6,776.5	-752.0	-237.3	-237.3	10.00	9.90	
7,100.0	77.80	91.55	6,805.9	-755.7	-141.9	-141.9	10.00	9.91	
7,115.4	79.32	91.35	6,809.0	-756.1	-126.8	-126.8	10.00	9.92	B Chalk
7,200.0	87.72	90.29	6,818.5	-757.3	-42.8	-42.8	10.00	9.92	
7,223.0	90.00	90.00	6,819.0	-757.4	-19.8	-19.8	10.00	9.92	LP @ 6819' TVD; 90°
7,300.0	90.00	90.00	6,819.0	-757.4	57.2	57.2	0.00	0.00	
7,400.0	90.00	90.00	6,819.0	-757.4	157.2	157.2	0.00	0.00	
7,500.0	90.00	90.00	6,819.0	-757.4	257.2	257.2	0.00	0.00	
7,600.0	90.00	90.00	6,819.0	-757.4	357.2	357.2	0.00	0.00	
7,700.0	90.00	90.00	6,819.0	-757.4	457.2	457.2	0.00	0.00	
7,800.0	90.00	90.00	6,819.0	-757.4	557.2	557.2	0.00	0.00	
7,900.0	90.00	90.00	6,819.0	-757.4	657.2	657.2	0.00	0.00	
8,000.0	90.00	90.00	6,819.0	-757.4	757.2	757.2	0.00	0.00	
8,100.0	90.00	90.00	6,819.0	-757.4	857.2	857.2	0.00	0.00	
8,200.0	90.00	90.00	6,819.0	-757.4	957.2	957.2	0.00	0.00	
8,300.0	90.00	90.00	6,819.0	-757.4	1,057.2	1,057.2	0.00	0.00	
8,400.0	90.00	90.00	6,819.0	-757.4	1,157.2	1,157.2	0.00	0.00	
8,500.0	90.00	90.00	6,819.0	-757.4	1,257.2	1,257.2	0.00	0.00	
8,600.0	90.00	90.00	6,819.0	-757.4	1,357.2	1,357.2	0.00	0.00	
8,700.0	90.00	90.00	6,819.0	-757.4	1,457.2	1,457.2	0.00	0.00	
8,800.0	90.00	90.00	6,819.0	-757.4	1,557.2	1,557.2	0.00	0.00	
8,900.0	90.00	90.00	6,819.0	-757.4	1,657.2	1,657.2	0.00	0.00	
9,000.0	90.00	90.00	6,819.0	-757.4	1,757.2	1,757.2	0.00	0.00	
9,100.0	90.00	90.00	6,819.0	-757.4	1,857.2	1,857.2	0.00	0.00	
9,200.0	90.00	90.00	6,819.0	-757.4	1,957.2	1,957.2	0.00	0.00	

Planning Report

Database:	USA EDM 5000 Multi Users DB	Local Co-ordinate Reference:	Well Boyd 3G-19H-M368
Company:	EnCana Oil & Gas (USA) Inc	TVD Reference:	WELL @ 5029.0ft (Original Well Elev)
Project:	DJ Wattenberg	MD Reference:	WELL @ 5029.0ft (Original Well Elev)
Site:	S19-T3N-R68W (Boyd)	North Reference:	True
Well:	Boyd 3G-19H-M368	Survey Calculation Method:	Minimum Curvature
Wellbore:	Hz		
Design:	Plan #1		

Planned Survey									
Measured Depth (ft)	Inclination (°)	Azimuth (°)	Vertical Depth (ft)	+N/-S (ft)	+E/-W (ft)	Vertical Section (ft)	Dogleg Rate (°/100ft)	Build Rate (°/100ft)	Comments / Formations
9,300.0	90.00	90.00	6,819.0	-757.4	2,057.2	2,057.2	0.00	0.00	
9,400.0	90.00	90.00	6,819.0	-757.4	2,157.2	2,157.2	0.00	0.00	
9,500.0	90.00	90.00	6,819.0	-757.4	2,257.2	2,257.2	0.00	0.00	
9,600.0	90.00	90.00	6,819.0	-757.4	2,357.2	2,357.2	0.00	0.00	
9,700.0	90.00	90.00	6,819.0	-757.4	2,457.2	2,457.2	0.00	0.00	
9,800.0	90.00	90.00	6,819.0	-757.4	2,557.2	2,557.2	0.00	0.00	
9,900.0	90.00	90.00	6,819.0	-757.4	2,657.2	2,657.2	0.00	0.00	
10,000.0	90.00	90.00	6,819.0	-757.4	2,757.2	2,757.2	0.00	0.00	
10,100.0	90.00	90.00	6,819.0	-757.4	2,857.2	2,857.2	0.00	0.00	
10,200.0	90.00	90.00	6,819.0	-757.4	2,957.2	2,957.2	0.00	0.00	
10,300.0	90.00	90.00	6,819.0	-757.4	3,057.2	3,057.2	0.00	0.00	
10,400.0	90.00	90.00	6,819.0	-757.4	3,157.2	3,157.2	0.00	0.00	
10,500.0	90.00	90.00	6,819.0	-757.4	3,257.2	3,257.2	0.00	0.00	
10,600.0	90.00	90.00	6,819.0	-757.4	3,357.2	3,357.2	0.00	0.00	
10,700.0	90.00	90.00	6,819.0	-757.4	3,457.2	3,457.2	0.00	0.00	
10,800.0	90.00	90.00	6,819.0	-757.4	3,557.2	3,557.2	0.00	0.00	
10,900.0	90.00	90.00	6,819.0	-757.4	3,657.2	3,657.2	0.00	0.00	
11,000.0	90.00	90.00	6,819.0	-757.4	3,757.2	3,757.2	0.00	0.00	
11,100.0	90.00	90.00	6,819.0	-757.4	3,857.2	3,857.2	0.00	0.00	
11,200.0	90.00	90.00	6,819.0	-757.4	3,957.2	3,957.2	0.00	0.00	
11,300.0	90.00	90.00	6,819.0	-757.4	4,057.2	4,057.2	0.00	0.00	
11,400.0	90.00	90.00	6,819.0	-757.4	4,157.2	4,157.2	0.00	0.00	
11,413.0	90.00	90.00	6,819.0	-757.4	4,170.2	4,170.2	0.00	0.00	TD at 11413.0

Targets									
Target Name	Dip Angle (°)	Dip Dir. (°)	TVD (ft)	+N/-S (ft)	+E/-W (ft)	Northing (ft)	Easting (ft)	Latitude	Longitude
Boyd 3G-19H-M368 PBI - hit/miss target - Shape - Point	0.00	0.00	6,819.0	-757.4	4,170.2	1,317,629.46	3,129,034.81	40.204360	-105.038050

Formations						
Measured Depth (ft)	Vertical Depth (ft)	Name	Lithology	Dip (°)	Dip Direction (°)	
229.0	229.0	Fox Hills - BASE				
3,705.5	3,668.0	Sussex				
3,925.4	3,885.0	Sussex Marker				
4,167.7	4,124.0	Shannon				
5,866.6	5,800.0	Teepee Buttes (*if present)				
6,741.8	6,630.0	Sharon Springs				
6,933.6	6,748.0	Niobrara				
7,115.4	6,809.0	B Chalk				

Planning Report

Database:	USA EDM 5000 Multi Users DB	Local Co-ordinate Reference:	Well Boyd 3G-19H-M368
Company:	EnCana Oil & Gas (USA) Inc	TVD Reference:	WELL @ 5029.0ft (Original Well Elev)
Project:	DJ Wattenberg	MD Reference:	WELL @ 5029.0ft (Original Well Elev)
Site:	S19-T3N-R68W (Boyd)	North Reference:	True
Well:	Boyd 3G-19H-M368	Survey Calculation Method:	Minimum Curvature
Wellbore:	Hz		
Design:	Plan #1		

Plan Annotations				
Measured Depth (ft)	Vertical Depth (ft)	Local Coordinates		Comment
		+N/-S (ft)	+E/-W (ft)	
300.0	300.0	0.0	0.0	KOP @ 300'
1,242.0	1,237.8	-58.3	-50.7	EOB; Inc=9.42°
6,261.4	6,189.5	-678.5	-589.5	Start build/turn @ 6261' MD
7,223.0	6,819.0	-757.4	-19.8	LP @ 6819' TVD; 90°
11,413.0	6,819.0	-757.4	4,170.2	TD at 11413.0

EnCana Oil & Gas (USA) Inc

DJ Wattenberg

S19-T3N-R68W (Boyd)

Boyd 3G-19H-M368

Hz

Plan #1

Anticollision Report

20 June, 2013

Anticollision Report

Company:	EnCana Oil & Gas (USA) Inc	Local Co-ordinate Reference:	Well Boyd 3G-19H-M368
Project:	DJ Wattenberg	TVD Reference:	WELL @ 5029.0ft (Original Well Elev)
Reference Site:	S19-T3N-R68W (Boyd)	MD Reference:	WELL @ 5029.0ft (Original Well Elev)
Site Error:	0.0ft	North Reference:	True
Reference Well:	Boyd 3G-19H-M368	Survey Calculation Method:	Minimum Curvature
Well Error:	0.0ft	Output errors are at	2.00 sigma
Reference Wellbore	Hz	Database:	USA EDM 5000 Multi Users DB
Reference Design:	Plan #1	Offset TVD Reference:	Offset Datum

Reference	Plan #1		
Filter type:	NO GLOBAL FILTER: Using user defined selection & filtering criteria		
Interpolation Method:	MD Interval 100.0ft	Error Model:	Systematic Ellipse
Depth Range:	Unlimited	Scan Method:	Closest Approach 3D
Results Limited by:	Maximum center-center distance of 500.0ft	Error Surface:	Elliptical Conic
Warning Levels Evaluated at:	2.00 Sigma		

Survey Tool Program	Date	6/20/2013		
From (ft)	To (ft)	Survey (Wellbore)	Tool Name	Description
0.0	11,413.0	Plan #1 (Hz)	Geolink MWD	Geolink MWD

Site Name	Reference Measured Depth (ft)	Offset Measured Depth (ft)	Distance Between Centres (ft)	Distance Between Ellipses (ft)	Separation Factor	Warning
Summary						
S19-T3N-R68W (Boyd)						
BOYD 3-19 (EXISTING) - ENCANA WELL - SURVEYS						
Boyd 3B-19H-M368 - Hz - Plan #1	200.0	200.0	47.4	46.8	77.531	CC, ES
Boyd 3B-19H-M368 - Hz - Plan #1	700.0	694.8	75.7	73.3	31.716	SF
Boyd 3C-19H-M368 - Hz - Plan #1	300.0	300.0	40.1	39.1	41.744	CC, ES
Boyd 3C-19H-M368 - Hz - Plan #1	700.0	697.1	60.0	57.6	25.118	SF
Boyd 3D-19H-M368 - Hz - Plan #1	300.0	300.0	29.1	28.2	30.359	CC, ES
Boyd 3D-19H-M368 - Hz - Plan #1	700.0	699.1	42.6	40.2	17.907	SF
Boyd 3E-19H-M368 - Hz - Plan #1	300.0	300.0	18.2	17.3	18.974	CC, ES
Boyd 3E-19H-M368 - Hz - Plan #1	600.0	600.0	24.4	22.4	12.144	SF
Boyd 3F-19H-M368 - Hz - Plan #1	300.0	300.0	10.9	10.0	11.385	CC, ES
Boyd 3F-19H-M368 - Hz - Plan #1	11,413.0	11,600.0	413.7	225.8	2.202	SF

Anticollision Report

Company:	EnCana Oil & Gas (USA) Inc	Local Co-ordinate Reference:	Well Boyd 3G-19H-M368
Project:	DJ Wattenberg	TVD Reference:	WELL @ 5029.0ft (Original Well Elev)
Reference Site:	S19-T3N-R68W (Boyd)	MD Reference:	WELL @ 5029.0ft (Original Well Elev)
Site Error:	0.0ft	North Reference:	True
Reference Well:	Boyd 3G-19H-M368	Survey Calculation Method:	Minimum Curvature
Well Error:	0.0ft	Output errors are at	2.00 sigma
Reference Wellbore	Hz	Database:	USA EDM 5000 Multi Users DB
Reference Design:	Plan #1	Offset TVD Reference:	Offset Datum

Offset Design													Offset Site Error:	0.0 ft
S19-T3N-R68W (Boyd) - Boyd 3B-19H-M368 - Hz - Plan #1													Offset Well Error:	0.0 ft
Survey Program: 0-Geolink MWD														
Reference		Offset		Semi Major Axis			Distance						Warning	
Measured Depth (ft)	Vertical Depth (ft)	Measured Depth (ft)	Vertical Depth (ft)	Reference (ft)	Offset (ft)	Highside Toolface (°)	Offset Wellbore Centre +N/-S (ft)	+E/-W (ft)	Between Centres (ft)	Between Ellipses (ft)	Total Uncertainty Axis	Separation Factor		
0.0	0.0	0.0	0.0	0.0	0.0	0.00	47.4	0.0	47.4					
100.0	100.0	100.0	100.0	0.1	0.1	0.00	47.4	0.0	47.4	47.1	0.26	180.906		
200.0	200.0	200.0	200.0	0.3	0.3	0.00	47.4	0.0	47.4	46.8	0.61	77.531 CC, ES		
300.0	300.0	299.3	299.3	0.5	0.5	-0.58	48.1	-0.5	48.1	47.1	0.96	50.144		
400.0	400.0	398.6	398.5	0.7	0.7	137.43	50.2	-2.0	50.9	49.6	1.31	38.888		
500.0	500.0	497.6	497.5	0.8	0.8	136.79	53.7	-4.4	56.4	54.8	1.66	33.971		
600.0	599.9	596.4	596.1	1.0	1.0	136.50	58.6	-7.8	64.7	62.7	2.02	32.038		
700.0	699.7	694.8	694.2	1.2	1.3	136.47	64.9	-12.2	75.7	73.3	2.39	31.716 SF		
800.0	799.4	792.6	791.6	1.4	1.5	136.59	72.5	-17.4	89.4	86.6	2.76	32.333		
900.0	898.9	889.9	888.2	1.7	1.7	136.79	81.5	-23.6	105.7	102.6	3.16	33.517		
1,000.0	998.3	986.4	984.0	1.9	2.0	137.02	91.7	-30.7	124.8	121.2	3.56	35.046		
1,100.0	1,097.4	1,082.2	1,078.7	2.2	2.3	137.24	103.1	-38.6	146.4	142.4	3.98	36.777		
1,200.0	1,196.3	1,177.0	1,172.3	2.5	2.6	137.44	115.7	-47.3	170.6	166.2	4.42	38.617		
1,300.0	1,295.0	1,272.1	1,265.9	2.8	2.9	137.70	129.5	-56.8	197.1	192.2	4.87	40.454		
1,400.0	1,393.6	1,368.4	1,360.7	3.1	3.2	137.95	143.6	-66.6	223.9	218.6	5.34	41.944		
1,500.0	1,492.3	1,464.8	1,455.5	3.4	3.5	138.14	157.8	-76.4	250.7	244.9	5.81	43.163		
1,600.0	1,590.9	1,561.1	1,550.3	3.7	3.9	138.30	171.9	-86.2	277.5	271.2	6.28	44.174		
1,700.0	1,689.6	1,657.5	1,645.1	4.1	4.2	138.43	186.0	-96.0	304.3	297.5	6.76	45.026		
1,800.0	1,788.2	1,753.8	1,739.9	4.4	4.6	138.54	200.2	-105.8	331.1	323.8	7.24	45.751		
1,900.0	1,886.9	1,850.2	1,834.6	4.7	4.9	138.63	214.3	-115.6	357.8	350.1	7.72	46.375		
2,000.0	1,985.5	1,946.5	1,929.4	5.0	5.2	138.71	228.5	-125.4	384.6	376.4	8.20	46.918		
2,100.0	2,084.2	2,042.8	2,024.2	5.4	5.6	138.78	242.6	-135.2	411.4	402.8	8.68	47.393		
2,200.0	2,182.8	2,139.2	2,119.0	5.7	5.9	138.84	256.8	-145.0	438.2	429.1	9.17	47.813		
2,300.0	2,281.5	2,235.5	2,213.8	6.0	6.3	138.90	270.9	-154.8	465.0	455.4	9.65	48.187		
2,400.0	2,380.1	2,331.9	2,308.6	6.4	6.6	138.95	285.1	-164.6	491.8	481.7	10.14	48.521		

CC - Min centre to center distance or convergent point, SF - min separation factor, ES - min ellipse separation

Anticollision Report

Company:	EnCana Oil & Gas (USA) Inc	Local Co-ordinate Reference:	Well Boyd 3G-19H-M368
Project:	DJ Wattenberg	TVD Reference:	WELL @ 5029.0ft (Original Well Elev)
Reference Site:	S19-T3N-R68W (Boyd)	MD Reference:	WELL @ 5029.0ft (Original Well Elev)
Site Error:	0.0ft	North Reference:	True
Reference Well:	Boyd 3G-19H-M368	Survey Calculation Method:	Minimum Curvature
Well Error:	0.0ft	Output errors are at	2.00 sigma
Reference Wellbore	Hz	Database:	USA EDM 5000 Multi Users DB
Reference Design:	Plan #1	Offset TVD Reference:	Offset Datum

Offset Design													Offset Site Error:	0.0 ft	
Survey Program: 0-Geolink MWD													Offset Well Error:		0.0 ft
Reference				Offset			Semi Major Axis			Distance			Total Uncertainty Axis	Separation Factor	Warning
Measured Depth (ft)	Vertical Depth (ft)	Measured Depth (ft)	Vertical Depth (ft)	Reference (ft)	Offset (ft)	Highside Toolface (°)	Offset Wellbore Centre +N/-S (ft)	+E/-W (ft)	Between Centres (ft)	Between Ellipses (ft)					
0.0	0.0	0.0	0.0	0.0	0.0	0.00	40.1	0.0	40.1						
100.0	100.0	100.0	100.0	0.1	0.1	0.00	40.1	0.0	40.1	39.8	0.26	153.061			
200.0	200.0	200.0	200.0	0.3	0.3	0.00	40.1	0.0	40.1	39.5	0.61	65.598			
300.0	300.0	300.0	300.0	0.5	0.5	0.00	40.1	0.0	40.1	39.1	0.96	41.744	CC, ES		
400.0	400.0	399.5	399.5	0.7	0.7	138.91	40.7	-0.6	41.3	40.0	1.31	31.568			
500.0	500.0	498.9	498.9	0.8	0.8	138.63	42.4	-2.6	45.0	43.4	1.66	27.124			
600.0	599.9	598.2	598.0	1.0	1.0	138.26	45.3	-5.7	51.3	49.2	2.02	25.389			
700.0	699.7	697.1	696.8	1.2	1.2	137.85	49.3	-10.2	60.0	57.6	2.39	25.118	SF		
800.0	799.4	795.7	795.1	1.4	1.4	137.46	54.5	-15.8	71.1	68.3	2.77	25.697			
900.0	898.9	893.9	892.8	1.7	1.6	137.12	60.8	-22.7	84.7	81.6	3.16	26.784			
1,000.0	998.3	991.5	989.8	1.9	1.9	136.81	68.2	-30.8	100.8	97.2	3.58	28.170			
1,100.0	1,097.4	1,088.5	1,086.0	2.2	2.1	136.54	76.6	-40.0	119.3	115.2	4.01	29.722			
1,200.0	1,196.3	1,185.6	1,182.1	2.5	2.4	136.37	85.9	-50.3	140.0	135.5	4.47	31.339			
1,300.0	1,295.0	1,283.2	1,278.7	2.8	2.7	136.61	95.4	-60.7	161.8	156.9	4.93	32.794			
1,400.0	1,393.6	1,380.8	1,375.2	3.1	3.0	136.87	105.0	-71.2	183.8	178.4	5.41	33.968			
1,500.0	1,492.3	1,478.3	1,471.8	3.4	3.3	137.08	114.5	-81.6	205.7	199.8	5.89	34.925			
1,600.0	1,590.9	1,575.9	1,568.3	3.7	3.6	137.25	124.0	-92.0	227.7	221.3	6.37	35.718			
1,700.0	1,689.6	1,673.4	1,664.8	4.1	3.8	137.39	133.5	-102.5	249.7	242.8	6.86	36.385			
1,800.0	1,788.2	1,771.0	1,761.3	4.4	4.1	137.50	143.0	-112.9	271.6	264.3	7.35	36.952			
1,900.0	1,886.9	1,868.6	1,857.9	4.7	4.4	137.60	152.5	-123.3	293.6	285.8	7.84	37.439			
2,000.0	1,985.5	1,966.1	1,954.4	5.0	4.7	137.68	162.0	-133.8	315.6	307.2	8.33	37.863			
2,100.0	2,084.2	2,063.7	2,050.9	5.4	5.0	137.76	171.6	-144.2	337.5	328.7	8.83	38.233			
2,200.0	2,182.8	2,161.2	2,147.5	5.7	5.3	137.82	181.1	-154.6	359.5	350.2	9.32	38.560			
2,300.0	2,281.5	2,258.8	2,244.0	6.0	5.6	137.88	190.6	-165.1	381.5	371.7	9.82	38.851			
2,400.0	2,380.1	2,356.3	2,340.5	6.4	5.9	137.93	200.1	-175.5	403.5	393.1	10.32	39.111			
2,500.0	2,478.8	2,453.9	2,437.0	6.7	6.2	137.98	209.6	-185.9	425.4	414.6	10.81	39.344			
2,600.0	2,577.4	2,551.4	2,533.6	7.0	6.5	138.02	219.1	-196.4	447.4	436.1	11.31	39.556			
2,700.0	2,676.1	2,649.0	2,630.1	7.4	6.8	138.05	228.6	-206.8	469.4	457.6	11.81	39.747			
2,800.0	2,774.8	2,746.6	2,726.6	7.7	7.1	138.09	238.2	-217.2	491.3	479.0	12.31	39.922			

CC - Min centre to center distance or convergent point, SF - min separation factor, ES - min ellipse separation

Anticollision Report

Company:	EnCana Oil & Gas (USA) Inc	Local Co-ordinate Reference:	Well Boyd 3G-19H-M368
Project:	DJ Wattenberg	TVD Reference:	WELL @ 5029.0ft (Original Well Elev)
Reference Site:	S19-T3N-R68W (Boyd)	MD Reference:	WELL @ 5029.0ft (Original Well Elev)
Site Error:	0.0ft	North Reference:	True
Reference Well:	Boyd 3G-19H-M368	Survey Calculation Method:	Minimum Curvature
Well Error:	0.0ft	Output errors are at	2.00 sigma
Reference Wellbore	Hz	Database:	USA EDM 5000 Multi Users DB
Reference Design:	Plan #1	Offset TVD Reference:	Offset Datum

Offset Design													Offset Site Error:	0.0 ft	
Survey Program: 0-Geolink MWD													Offset Well Error:		0.0 ft
Reference				Offset			Semi Major Axis			Distance			Total Uncertainty Axis	Separation Factor	Warning
Measured Depth (ft)	Vertical Depth (ft)	Measured Depth (ft)	Vertical Depth (ft)	Reference (ft)	Offset (ft)	Highside Toolface (°)	Offset Wellbore Centre +N/-S (ft)	+E/-W (ft)	Between Centres (ft)	Between Ellipses (ft)					
0.0	0.0	0.0	0.0	0.0	0.0	0.00	29.1	0.0	29.1						
100.0	100.0	100.0	100.0	0.1	0.1	0.00	29.1	0.0	29.1	28.9	0.26	111.317			
200.0	200.0	200.0	200.0	0.3	0.3	0.00	29.1	0.0	29.1	28.5	0.61	47.707			
300.0	300.0	300.0	300.0	0.5	0.5	0.00	29.1	0.0	29.1	28.2	0.96	30.359 CC, ES			
400.0	400.0	400.0	400.0	0.7	0.7	140.11	29.1	0.0	29.8	28.5	1.31	22.767			
500.0	500.0	499.8	499.8	0.8	0.8	141.64	29.5	-0.8	32.1	30.5	1.66	19.361			
600.0	599.9	599.5	599.5	1.0	1.0	141.99	30.4	-3.2	36.4	34.4	2.02	18.068			
700.0	699.7	699.1	698.9	1.2	1.2	141.47	32.0	-7.2	42.6	40.2	2.38	17.907 SF			
800.0	799.4	798.5	798.1	1.4	1.4	140.46	34.3	-12.9	50.8	48.0	2.76	18.399			
900.0	898.9	897.6	897.0	1.7	1.6	139.24	37.2	-20.1	60.9	57.7	3.16	19.278			
1,000.0	998.3	996.4	995.4	1.9	1.8	137.99	40.7	-28.8	73.0	69.4	3.58	20.378			
1,100.0	1,097.4	1,095.2	1,093.6	2.2	2.0	136.98	44.7	-38.9	86.9	82.9	4.02	21.596			
1,200.0	1,196.3	1,194.1	1,191.8	2.5	2.3	136.81	48.8	-49.1	102.1	97.7	4.48	22.794			
1,300.0	1,295.0	1,292.7	1,289.8	2.8	2.5	137.20	52.8	-59.3	118.5	113.5	4.95	23.934			
1,400.0	1,393.6	1,391.4	1,387.8	3.1	2.8	137.58	56.9	-69.5	134.9	129.5	5.42	24.867			
1,500.0	1,492.3	1,490.0	1,485.9	3.4	3.0	137.87	61.0	-79.7	151.3	145.4	5.90	25.632			
1,600.0	1,590.9	1,588.6	1,583.9	3.7	3.3	138.11	65.1	-89.9	167.8	161.4	6.39	26.269			
1,700.0	1,689.6	1,687.3	1,681.9	4.1	3.5	138.30	69.1	-100.0	184.2	177.3	6.87	26.807			
1,800.0	1,788.2	1,785.9	1,779.9	4.4	3.8	138.47	73.2	-110.2	200.6	193.3	7.36	27.266			
1,900.0	1,886.9	1,884.5	1,878.0	4.7	4.0	138.61	77.3	-120.4	217.1	209.2	7.85	27.663			
2,000.0	1,985.5	1,983.2	1,976.0	5.0	4.3	138.72	81.3	-130.6	233.5	225.2	8.34	28.009			
2,100.0	2,084.2	2,081.8	2,074.0	5.4	4.5	138.83	85.4	-140.8	250.0	241.1	8.83	28.312			
2,200.0	2,182.8	2,180.5	2,172.0	5.7	4.8	138.92	89.5	-151.0	266.4	257.1	9.32	28.581			
2,300.0	2,281.5	2,279.1	2,270.1	6.0	5.0	139.00	93.6	-161.2	282.9	273.0	9.81	28.820			
2,400.0	2,380.1	2,377.7	2,368.1	6.4	5.3	139.07	97.6	-171.4	299.3	289.0	10.31	29.035			
2,500.0	2,478.8	2,476.4	2,466.1	6.7	5.5	139.13	101.7	-181.6	315.8	305.0	10.80	29.228			
2,600.0	2,577.4	2,575.0	2,564.1	7.0	5.8	139.19	105.8	-191.8	332.2	320.9	11.30	29.403			
2,700.0	2,676.1	2,673.6	2,662.2	7.4	6.1	139.24	109.9	-202.0	348.6	336.9	11.79	29.563			
2,800.0	2,774.8	2,772.3	2,760.2	7.7	6.3	139.29	113.9	-212.2	365.1	352.8	12.29	29.708			
2,900.0	2,873.4	2,870.9	2,858.2	8.0	6.6	139.33	118.0	-222.4	381.5	368.8	12.79	29.842			
3,000.0	2,972.1	2,969.6	2,956.2	8.4	6.8	139.37	122.1	-232.6	398.0	384.7	13.28	29.964			
3,100.0	3,070.7	3,068.2	3,054.3	8.7	7.1	139.41	126.2	-242.7	414.4	400.7	13.78	30.078			
3,200.0	3,169.4	3,166.8	3,152.3	9.0	7.3	139.44	130.2	-252.9	430.9	416.6	14.28	30.182			
3,300.0	3,268.0	3,265.5	3,250.3	9.4	7.6	139.47	134.3	-263.1	447.3	432.6	14.77	30.280			
3,400.0	3,366.7	3,364.1	3,348.3	9.7	7.8	139.50	138.4	-273.3	463.8	448.5	15.27	30.370			
3,500.0	3,465.3	3,462.7	3,446.4	10.0	8.1	139.53	142.4	-283.5	480.2	464.5	15.77	30.455			
3,600.0	3,564.0	3,561.4	3,544.4	10.4	8.4	139.56	146.5	-293.7	496.7	480.4	16.27	30.534			

CC - Min centre to center distance or convergent point, SF - min separation factor, ES - min ellipse separation

Anticollision Report

Company:	EnCana Oil & Gas (USA) Inc	Local Co-ordinate Reference:	Well Boyd 3G-19H-M368
Project:	DJ Wattenberg	TVD Reference:	WELL @ 5029.0ft (Original Well Elev)
Reference Site:	S19-T3N-R68W (Boyd)	MD Reference:	WELL @ 5029.0ft (Original Well Elev)
Site Error:	0.0ft	North Reference:	True
Reference Well:	Boyd 3G-19H-M368	Survey Calculation Method:	Minimum Curvature
Well Error:	0.0ft	Output errors are at	2.00 sigma
Reference Wellbore	Hz	Database:	USA EDM 5000 Multi Users DB
Reference Design:	Plan #1	Offset TVD Reference:	Offset Datum

Offset Design													Offset Site Error:	0.0 ft
S19-T3N-R68W (Boyd) - Boyd 3E-19H-M368 - Hz - Plan #1													Offset Well Error:	0.0 ft
Survey Program: 0-Geolink MWD														
Reference		Offset		Semi Major Axis			Distance					Total Uncertainty Axis	Separation Factor	Warning
Measured Depth (ft)	Vertical Depth (ft)	Measured Depth (ft)	Vertical Depth (ft)	Reference (ft)	Offset (ft)	Highside Toolface (°)	Offset Wellbore Centre +N/-S (ft)	+E/-W (ft)	Between Centres (ft)	Between Ellipses (ft)				
0.0	0.0	0.0	0.0	0.0	0.0	0.00	18.2	0.0	18.2					
100.0	100.0	100.0	100.0	0.1	0.1	0.00	18.2	0.0	18.2	18.0	0.26	69.573		
200.0	200.0	200.0	200.0	0.3	0.3	0.00	18.2	0.0	18.2	17.6	0.61	29.817		
300.0	300.0	300.0	300.0	0.5	0.5	0.00	18.2	0.0	18.2	17.3	0.96	18.974 CC, ES		
400.0	400.0	400.0	400.0	0.7	0.7	140.75	18.2	0.0	18.9	17.6	1.31	14.422		
500.0	500.0	500.0	500.0	0.8	0.8	145.27	18.2	0.0	21.0	19.3	1.66	12.641		
600.0	599.9	600.0	600.0	1.0	1.0	149.09	18.1	-0.9	24.4	22.4	2.01	12.144 SF		
700.0	699.7	700.0	700.0	1.2	1.2	150.32	17.8	-3.5	28.9	26.5	2.37	12.216		
800.0	799.4	800.0	799.9	1.4	1.4	149.85	17.3	-7.8	34.4	31.7	2.73	12.588		
900.0	898.9	900.0	899.7	1.7	1.6	148.40	16.6	-13.9	40.9	37.8	3.11	13.128		
1,000.0	998.3	999.9	999.3	1.9	1.8	146.45	15.7	-21.7	48.4	44.9	3.52	13.759		
1,100.0	1,097.4	1,099.7	1,098.7	2.2	2.0	144.31	14.6	-31.2	57.0	53.0	3.95	14.427		
1,200.0	1,196.3	1,199.3	1,197.6	2.5	2.2	142.50	13.4	-41.9	66.8	62.4	4.41	15.151		
1,300.0	1,295.0	1,298.7	1,296.4	2.8	2.4	141.79	12.1	-52.8	77.7	72.9	4.88	15.942		
1,400.0	1,393.6	1,398.1	1,395.2	3.1	2.7	141.34	10.9	-63.6	88.8	83.5	5.35	16.590		
1,500.0	1,492.3	1,497.5	1,494.0	3.4	2.9	140.99	9.6	-74.4	99.9	94.1	5.84	17.114		
1,600.0	1,590.9	1,596.8	1,592.8	3.7	3.2	140.71	8.4	-85.3	111.0	104.7	6.33	17.544		
1,700.0	1,689.6	1,696.2	1,691.5	4.1	3.4	140.48	7.1	-96.1	122.1	115.3	6.82	17.903		
1,800.0	1,788.2	1,795.6	1,790.3	4.4	3.7	140.29	5.9	-107.0	133.2	125.9	7.32	18.206		
1,900.0	1,886.9	1,895.0	1,889.1	4.7	3.9	140.12	4.6	-117.8	144.3	136.5	7.81	18.464		
2,000.0	1,985.5	1,994.4	1,987.9	5.0	4.2	139.99	3.3	-128.6	155.4	147.1	8.31	18.687		
2,100.0	2,084.2	2,093.8	2,086.7	5.4	4.4	139.86	2.1	-139.5	166.5	157.7	8.82	18.881		
2,200.0	2,182.8	2,193.1	2,185.4	5.7	4.7	139.76	0.8	-150.3	177.6	168.3	9.32	19.051		
2,300.0	2,281.5	2,292.5	2,284.2	6.0	4.9	139.67	-0.4	-161.1	188.7	178.9	9.83	19.202		
2,400.0	2,380.1	2,391.9	2,383.0	6.4	5.2	139.58	-1.7	-172.0	199.8	189.4	10.33	19.336		
2,500.0	2,478.8	2,491.3	2,481.8	6.7	5.4	139.51	-2.9	-182.8	210.9	200.0	10.84	19.455		
2,600.0	2,577.4	2,590.7	2,580.6	7.0	5.7	139.44	-4.2	-193.6	222.0	210.6	11.35	19.563		
2,700.0	2,676.1	2,690.0	2,679.4	7.4	5.9	139.38	-5.4	-204.5	233.1	221.2	11.86	19.660		
2,800.0	2,774.8	2,789.4	2,778.1	7.7	6.2	139.33	-6.7	-215.3	244.2	231.8	12.36	19.749		
2,900.0	2,873.4	2,888.8	2,876.9	8.0	6.5	139.28	-7.9	-226.2	255.3	242.4	12.87	19.830		
3,000.0	2,972.1	2,988.2	2,975.7	8.4	6.7	139.23	-9.2	-237.0	266.4	253.0	13.38	19.903		
3,100.0	3,070.7	3,087.6	3,074.5	8.7	7.0	139.19	-10.4	-247.8	277.5	263.6	13.89	19.971		
3,200.0	3,169.4	3,187.0	3,173.3	9.0	7.2	139.15	-11.7	-258.7	288.6	274.2	14.41	20.034		
3,300.0	3,268.0	3,286.3	3,272.0	9.4	7.5	139.11	-12.9	-269.5	299.7	284.8	14.92	20.092		
3,400.0	3,366.7	3,385.7	3,370.8	9.7	7.7	139.08	-14.2	-280.3	310.8	295.4	15.43	20.145		
3,500.0	3,465.3	3,485.1	3,469.6	10.0	8.0	139.05	-15.4	-291.2	321.9	306.0	15.94	20.195		
3,600.0	3,564.0	3,584.5	3,568.4	10.4	8.2	139.02	-16.7	-302.0	333.0	316.6	16.45	20.242		
3,700.0	3,662.6	3,683.9	3,667.2	10.7	8.5	138.99	-18.0	-312.8	344.1	327.1	16.96	20.285		
3,800.0	3,761.3	3,783.2	3,765.9	11.0	8.8	138.97	-19.2	-323.7	355.2	337.7	17.48	20.326		
3,900.0	3,859.9	3,882.6	3,864.7	11.4	9.0	138.94	-20.5	-334.5	366.3	348.3	17.99	20.364		
4,000.0	3,958.6	3,982.0	3,963.5	11.7	9.3	138.92	-21.7	-345.4	377.4	358.9	18.50	20.400		
4,100.0	4,057.2	4,081.4	4,062.3	12.0	9.5	138.90	-23.0	-356.2	388.5	369.5	19.01	20.433		
4,200.0	4,155.9	4,180.8	4,161.1	12.4	9.8	138.88	-24.2	-367.0	399.6	380.1	19.53	20.465		
4,300.0	4,254.5	4,280.2	4,259.8	12.7	10.0	138.86	-25.5	-377.9	410.7	390.7	20.04	20.495		
4,400.0	4,353.2	4,379.5	4,358.6	13.0	10.3	138.84	-26.7	-388.7	421.8	401.3	20.55	20.523		
4,500.0	4,451.8	4,478.9	4,457.4	13.4	10.6	138.83	-28.0	-399.5	432.9	411.9	21.07	20.550		
4,600.0	4,550.5	4,578.3	4,556.2	13.7	10.8	138.81	-29.2	-410.4	444.0	422.5	21.58	20.576		
4,700.0	4,649.1	4,677.7	4,655.0	14.0	11.1	138.79	-30.5	-421.2	455.1	433.0	22.09	20.600		
4,800.0	4,747.8	4,777.1	4,753.8	14.4	11.3	138.78	-31.7	-432.0	466.2	443.6	22.61	20.623		
4,900.0	4,846.4	4,876.4	4,852.5	14.7	11.6	138.77	-33.0	-442.9	477.3	454.2	23.12	20.645		
5,000.0	4,945.1	4,975.8	4,951.3	15.0	11.9	138.75	-34.2	-453.7	488.5	464.8	23.64	20.666		
5,100.0	5,043.7	5,075.2	5,050.1	15.4	12.1	138.74	-35.5	-464.6	499.6	475.4	24.15	20.686		

CC - Min centre to center distance or convergent point, SF - min separation factor, ES - min ellipse separation

Anticollision Report

Company:	EnCana Oil & Gas (USA) Inc	Local Co-ordinate Reference:	Well Boyd 3G-19H-M368
Project:	DJ Wattenberg	TVD Reference:	WELL @ 5029.0ft (Original Well Elev)
Reference Site:	S19-T3N-R68W (Boyd)	MD Reference:	WELL @ 5029.0ft (Original Well Elev)
Site Error:	0.0ft	North Reference:	True
Reference Well:	Boyd 3G-19H-M368	Survey Calculation Method:	Minimum Curvature
Well Error:	0.0ft	Output errors are at	2.00 sigma
Reference Wellbore	Hz	Database:	USA EDM 5000 Multi Users DB
Reference Design:	Plan #1	Offset TVD Reference:	Offset Datum

Anticollision Report

Company:	EnCana Oil & Gas (USA) Inc	Local Co-ordinate Reference:	Well Boyd 3G-19H-M368
Project:	DJ Wattenberg	TVD Reference:	WELL @ 5029.0ft (Original Well Elev)
Reference Site:	S19-T3N-R68W (Boyd)	MD Reference:	WELL @ 5029.0ft (Original Well Elev)
Site Error:	0.0ft	North Reference:	True
Reference Well:	Boyd 3G-19H-M368	Survey Calculation Method:	Minimum Curvature
Well Error:	0.0ft	Output errors are at	2.00 sigma
Reference Wellbore	Hz	Database:	USA EDM 5000 Multi Users DB
Reference Design:	Plan #1	Offset TVD Reference:	Offset Datum

Offset Design S19-T3N-R68W (Boyd) - Boyd 3F-19H-M368 - Hz - Plan #1													Offset Site Error:	0.0 ft
Survey Program: 0-Geolink MWD													Offset Well Error:	0.0 ft
Reference		Offset		Semi Major Axis			Distance				Total Uncertainty Axis	Separation Factor	Warning	
Measured Depth (ft)	Vertical Depth (ft)	Measured Depth (ft)	Vertical Depth (ft)	Reference (ft)	Offset (ft)	Highside Tooface (°)	Offset Wellbore Centre +N/-S (ft)	+E/-W (ft)	Between Centres (ft)	Between Ellipses (ft)				
0.0	0.0	0.0	0.0	0.0	0.0	0.00	10.9	0.0	10.9					
100.0	100.0	100.0	100.0	0.1	0.1	0.00	10.9	0.0	10.9	10.7	0.26	41.744		
200.0	200.0	200.0	200.0	0.3	0.3	0.00	10.9	0.0	10.9	10.3	0.61	17.890		
300.0	300.0	300.0	300.0	0.5	0.5	0.00	10.9	0.0	10.9	10.0	0.96	11.385 CC, ES		
400.0	400.0	400.0	400.0	0.7	0.7	141.84	10.9	0.0	11.6	10.3	1.31	8.862		
500.0	500.0	500.1	500.1	0.8	0.8	145.77	10.5	-0.7	13.2	11.5	1.66	7.944		
600.0	599.9	600.3	600.2	1.0	1.0	147.38	9.0	-2.9	15.1	13.1	2.01	7.516		
700.0	699.7	700.4	700.3	1.2	1.2	147.35	6.7	-6.6	17.4	15.0	2.37	7.334		
800.0	799.4	800.6	800.3	1.4	1.4	146.24	3.4	-11.8	20.0	17.3	2.75	7.289		
900.0	898.9	900.8	900.1	1.7	1.6	144.45	-0.9	-18.4	23.0	19.8	3.14	7.321		
1,000.0	998.3	1,001.0	999.9	1.9	1.8	142.30	-6.0	-26.5	26.3	22.7	3.56	7.396		
1,100.0	1,097.4	1,101.2	1,099.4	2.2	2.1	139.98	-12.2	-36.1	30.0	26.0	4.01	7.490		
1,200.0	1,196.3	1,201.1	1,198.6	2.5	2.3	138.79	-18.8	-46.4	34.6	30.1	4.48	7.725		
1,300.0	1,295.0	1,300.9	1,297.7	2.8	2.6	139.27	-25.4	-56.7	40.2	35.3	4.94	8.145		
1,400.0	1,393.6	1,400.8	1,396.7	3.1	2.8	139.76	-31.9	-67.1	46.0	40.6	5.41	8.508		
1,500.0	1,492.3	1,500.6	1,495.8	3.4	3.1	140.15	-38.5	-77.4	51.8	45.9	5.88	8.808		
1,600.0	1,590.9	1,600.4	1,594.9	3.7	3.4	140.45	-45.1	-87.7	57.6	51.2	6.35	9.061		
1,700.0	1,689.6	1,700.3	1,694.0	4.1	3.6	140.71	-51.7	-98.0	63.4	56.5	6.83	9.275		
1,800.0	1,788.2	1,800.1	1,793.1	4.4	3.9	140.92	-58.3	-108.3	69.1	61.8	7.31	9.459		
1,900.0	1,886.9	1,899.9	1,892.1	4.7	4.2	141.09	-64.9	-118.6	74.9	67.1	7.79	9.620		
2,000.0	1,985.5	1,999.8	1,991.2	5.0	4.4	141.25	-71.5	-129.0	80.7	72.4	8.27	9.760		
2,100.0	2,084.2	2,099.6	2,090.3	5.4	4.7	141.38	-78.1	-139.3	86.5	77.8	8.75	9.883		
2,200.0	2,182.8	2,199.4	2,189.4	5.7	5.0	141.49	-84.7	-149.6	92.3	83.1	9.24	9.993		
2,300.0	2,281.5	2,299.2	2,288.5	6.0	5.2	141.59	-91.3	-159.9	98.1	88.4	9.72	10.092		
2,400.0	2,380.1	2,399.1	2,387.5	6.4	5.5	141.68	-97.9	-170.2	103.9	93.7	10.20	10.180		
2,500.0	2,478.8	2,498.9	2,486.6	6.7	5.8	141.76	-104.5	-180.5	109.7	99.0	10.69	10.260		
2,600.0	2,577.4	2,598.7	2,585.7	7.0	6.1	141.84	-111.1	-190.9	115.4	104.3	11.17	10.333		
2,700.0	2,676.1	2,698.6	2,684.8	7.4	6.3	141.90	-117.7	-201.2	121.2	109.6	11.66	10.399		
2,800.0	2,774.8	2,798.4	2,783.8	7.7	6.6	141.96	-124.3	-211.5	127.0	114.9	12.14	10.460		
2,900.0	2,873.4	2,898.2	2,882.9	8.0	6.9	142.02	-130.9	-221.8	132.8	120.2	12.63	10.516		
3,000.0	2,972.1	2,998.1	2,982.0	8.4	7.2	142.07	-137.5	-232.1	138.6	125.5	13.12	10.567		
3,100.0	3,070.7	3,097.9	3,081.1	8.7	7.4	142.11	-144.1	-242.4	144.4	130.8	13.60	10.615		
3,200.0	3,169.4	3,197.7	3,180.2	9.0	7.7	142.15	-150.7	-252.8	150.2	136.1	14.09	10.659		
3,300.0	3,268.0	3,297.6	3,279.2	9.4	8.0	142.19	-157.3	-263.1	156.0	141.4	14.58	10.700		
3,400.0	3,366.7	3,397.4	3,378.3	9.7	8.3	142.23	-163.9	-273.4	161.8	146.7	15.06	10.738		
3,500.0	3,465.3	3,497.2	3,477.4	10.0	8.5	142.26	-170.5	-283.7	167.6	152.0	15.55	10.774		
3,600.0	3,564.0	3,597.1	3,576.5	10.4	8.8	142.30	-177.1	-294.0	173.3	157.3	16.04	10.808		
3,700.0	3,662.6	3,696.9	3,675.5	10.7	9.1	142.33	-183.7	-304.3	179.1	162.6	16.53	10.839		
3,800.0	3,761.3	3,796.7	3,774.6	11.0	9.4	142.35	-190.3	-314.7	184.9	167.9	17.01	10.869		
3,900.0	3,859.9	3,896.6	3,873.7	11.4	9.6	142.38	-196.8	-325.0	190.7	173.2	17.50	10.896		
4,000.0	3,958.6	3,996.4	3,972.8	11.7	9.9	142.40	-203.4	-335.3	196.5	178.5	17.99	10.923		
4,100.0	4,057.2	4,096.2	4,071.9	12.0	10.2	142.43	-210.0	-345.6	202.3	183.8	18.48	10.948		
4,200.0	4,155.9	4,196.1	4,170.9	12.4	10.5	142.45	-216.6	-355.9	208.1	189.1	18.97	10.971		
4,300.0	4,254.5	4,295.9	4,270.0	12.7	10.7	142.47	-223.2	-366.2	213.9	194.4	19.45	10.993		
4,400.0	4,353.2	4,395.7	4,369.1	13.0	11.0	142.49	-229.8	-376.6	219.7	199.7	19.94	11.015		
4,500.0	4,451.8	4,495.6	4,468.2	13.4	11.3	142.51	-236.4	-386.9	225.5	205.0	20.43	11.035		
4,600.0	4,550.5	4,595.4	4,567.3	13.7	11.6	142.53	-243.0	-397.2	231.2	210.3	20.92	11.054		
4,700.0	4,649.1	4,695.2	4,666.3	14.0	11.8	142.54	-249.6	-407.5	237.0	215.6	21.41	11.072		
4,800.0	4,747.8	4,795.1	4,765.4	14.4	12.1	142.56	-256.2	-417.8	242.8	220.9	21.90	11.089		
4,900.0	4,846.4	4,894.9	4,864.5	14.7	12.4	142.57	-262.8	-428.1	248.6	226.2	22.39	11.106		
5,000.0	4,945.1	4,994.7	4,963.6	15.0	12.7	142.59	-269.4	-438.5	254.4	231.5	22.87	11.122		
5,100.0	5,043.7	5,094.5	5,062.6	15.4	12.9	142.60	-276.0	-448.8	260.2	236.8	23.36	11.137		

CC - Min centre to center distance or convergent point, SF - min separation factor, ES - min ellipse separation

Anticollision Report

Company:	EnCana Oil & Gas (USA) Inc	Local Co-ordinate Reference:	Well Boyd 3G-19H-M368
Project:	DJ Wattenberg	TVD Reference:	WELL @ 5029.0ft (Original Well Elev)
Reference Site:	S19-T3N-R68W (Boyd)	MD Reference:	WELL @ 5029.0ft (Original Well Elev)
Site Error:	0.0ft	North Reference:	True
Reference Well:	Boyd 3G-19H-M368	Survey Calculation Method:	Minimum Curvature
Well Error:	0.0ft	Output errors are at	2.00 sigma
Reference Wellbore	Hz	Database:	USA EDM 5000 Multi Users DB
Reference Design:	Plan #1	Offset TVD Reference:	Offset Datum

Offset Design													Offset Site Error:	0.0 ft		
Survey Program: 0-Geolink MWD													Offset Well Error:		0.0 ft	
Reference													Distance		Warning	
Measured Depth (ft)	Vertical Depth (ft)	Measured Depth (ft)	Vertical Depth (ft)	Reference (ft)	Offset (ft)	Highside Toolface (°)	Offset Wellbore Centre +N/-S (ft)	+E/-W (ft)	Between Centres (ft)	Between Ellipses (ft)	Total Uncertainty Axis	Separation Factor				
5,200.0	5,142.4	5,194.4	5,161.7	15.7	13.2	142.61	-282.6	-459.1	266.0	242.1	23.85	11.152				
5,300.0	5,241.0	5,294.2	5,260.8	16.1	13.5	142.63	-289.2	-469.4	271.8	247.4	24.34	11.166				
5,400.0	5,339.7	5,394.0	5,359.9	16.4	13.8	142.64	-295.8	-479.7	277.6	252.7	24.83	11.179				
5,500.0	5,438.3	5,493.9	5,459.0	16.7	14.1	142.65	-302.4	-490.0	283.4	258.0	25.32	11.192				
5,600.0	5,537.0	5,593.7	5,558.0	17.1	14.3	142.66	-309.0	-500.4	289.1	263.3	25.81	11.204				
5,700.0	5,635.6	5,693.5	5,657.1	17.4	14.6	142.67	-315.6	-510.7	294.9	268.6	26.30	11.216				
5,800.0	5,734.3	5,793.4	5,756.2	17.7	14.9	142.68	-322.2	-521.0	300.7	273.9	26.78	11.228				
5,900.0	5,832.9	5,893.2	5,855.3	18.1	15.2	142.69	-328.8	-531.3	306.5	279.2	27.27	11.239				
6,000.0	5,931.6	5,993.0	5,954.4	18.4	15.4	142.70	-335.4	-541.6	312.3	284.5	27.76	11.249				
6,100.0	6,030.2	6,092.9	6,053.4	18.7	15.7	142.71	-342.0	-551.9	318.1	289.8	28.25	11.259				
6,200.0	6,128.9	6,192.7	6,152.5	19.1	16.0	142.72	-348.6	-562.3	323.9	295.1	28.74	11.269				
6,300.0	6,227.7	6,292.5	6,251.6	19.4	16.3	165.55	-355.1	-572.6	329.6	300.4	29.21	11.285				
6,400.0	6,326.7	6,391.1	6,349.4	19.5	16.5	-131.81	-361.7	-582.8	334.8	304.9	29.95	11.181				
6,500.0	6,423.3	6,487.2	6,444.9	19.5	16.8	-115.48	-368.0	-591.6	341.4	310.6	30.85	11.068				
6,600.0	6,514.7	6,588.7	6,545.9	19.4	16.8	-112.86	-374.7	-586.8	351.0	319.8	31.18	11.259				
6,700.0	6,598.1	6,697.4	6,651.4	19.1	16.7	-113.77	-381.8	-561.9	363.0	332.3	30.71	11.819				
6,800.0	6,671.0	6,814.8	6,757.7	18.9	16.4	-115.81	-388.8	-513.2	376.3	346.8	29.49	12.761				
6,900.0	6,731.0	6,941.7	6,858.9	18.6	15.9	-118.08	-395.6	-437.5	389.6	361.8	27.78	14.024				
7,000.0	6,776.5	7,078.3	6,946.5	18.4	15.3	-120.11	-401.4	-333.1	401.3	375.1	26.14	15.353				
7,100.0	6,805.9	7,223.6	7,009.8	18.3	14.9	-121.58	-405.6	-202.9	409.7	384.3	25.38	16.142				
7,200.0	6,818.5	7,374.5	7,038.9	18.4	14.8	-122.26	-407.6	-55.3	413.5	387.3	26.28	15.738				
7,300.0	6,819.0	7,486.9	7,040.0	18.7	16.0	-122.29	-407.6	57.2	413.7	385.5	28.20	14.669				
7,400.0	6,819.0	7,586.9	7,040.0	19.5	17.5	-122.29	-407.6	157.2	413.7	383.2	30.50	13.563				
7,500.0	6,819.0	7,686.9	7,040.0	20.8	19.1	-122.29	-407.6	257.2	413.7	380.5	33.17	12.472				
7,600.0	6,819.0	7,786.9	7,040.0	22.3	20.9	-122.29	-407.6	357.2	413.7	377.6	36.13	11.450				
7,700.0	6,819.0	7,886.9	7,040.0	24.1	22.8	-122.29	-407.6	457.2	413.7	374.4	39.31	10.523				
7,800.0	6,819.0	7,986.9	7,040.0	26.0	24.8	-122.29	-407.6	557.2	413.7	371.0	42.67	9.695				
7,900.0	6,819.0	8,086.9	7,040.0	28.0	26.9	-122.29	-407.6	657.2	413.7	367.5	46.16	8.961				
8,000.0	6,819.0	8,186.9	7,040.0	30.0	29.1	-122.29	-407.6	757.2	413.7	363.9	49.76	8.313				
8,100.0	6,819.0	8,286.9	7,040.0	32.1	31.3	-122.29	-407.6	857.2	413.7	360.2	53.45	7.740				
8,200.0	6,819.0	8,386.9	7,040.0	34.3	33.5	-122.29	-407.6	957.2	413.7	356.5	57.21	7.231				
8,300.0	6,819.0	8,486.9	7,040.0	36.5	35.7	-122.29	-407.6	1,057.2	413.7	352.7	61.02	6.780				
8,400.0	6,819.0	8,586.9	7,040.0	38.8	38.0	-122.29	-407.6	1,157.2	413.7	348.8	64.88	6.376				
8,500.0	6,819.0	8,686.9	7,040.0	41.0	40.3	-122.29	-407.6	1,257.2	413.7	344.9	68.78	6.015				
8,600.0	6,819.0	8,786.9	7,040.0	43.3	42.6	-122.29	-407.6	1,357.2	413.7	341.0	72.71	5.690				
8,700.0	6,819.0	8,886.9	7,040.0	45.6	45.0	-122.29	-407.6	1,457.2	413.7	337.0	76.66	5.396				
8,800.0	6,819.0	8,986.9	7,040.0	47.9	47.3	-122.29	-407.6	1,557.2	413.7	333.0	80.64	5.130				
8,900.0	6,819.0	9,086.9	7,040.0	50.3	49.7	-122.29	-407.6	1,657.2	413.7	329.0	84.65	4.887				
9,000.0	6,819.0	9,186.9	7,040.0	52.6	52.1	-122.29	-407.6	1,757.2	413.7	325.0	88.66	4.666				
9,100.0	6,819.0	9,286.9	7,040.0	55.0	54.5	-122.29	-407.6	1,857.2	413.7	321.0	92.70	4.463				
9,200.0	6,819.0	9,386.9	7,040.0	57.4	56.8	-122.29	-407.6	1,957.2	413.7	316.9	96.74	4.276				
9,300.0	6,819.0	9,486.9	7,040.0	59.7	59.2	-122.29	-407.6	2,057.2	413.7	312.9	100.80	4.104				
9,400.0	6,819.0	9,586.9	7,040.0	62.1	61.6	-122.29	-407.6	2,157.2	413.7	308.8	104.87	3.945				
9,500.0	6,819.0	9,686.9	7,040.0	64.5	64.1	-122.29	-407.6	2,257.2	413.7	304.7	108.95	3.797				
9,600.0	6,819.0	9,786.9	7,040.0	66.9	66.5	-122.29	-407.6	2,357.2	413.7	300.7	113.03	3.660				
9,700.0	6,819.0	9,886.9	7,040.0	69.3	68.9	-122.29	-407.6	2,457.2	413.7	296.6	117.13	3.532				
9,800.0	6,819.0	9,986.9	7,040.0	71.7	71.3	-122.29	-407.6	2,557.2	413.7	292.5	121.23	3.413				
9,900.0	6,819.0	10,086.9	7,040.0	74.1	73.7	-122.29	-407.6	2,657.2	413.7	288.4	125.33	3.301				
10,000.0	6,819.0	10,186.9	7,040.0	76.5	76.2	-122.29	-407.6	2,757.2	413.7	284.2	129.44	3.196				
10,100.0	6,819.0	10,286.9	7,040.0	79.0	78.6	-122.29	-407.6	2,857.2	413.7	280.1	133.56	3.097				
10,200.0	6,819.0	10,386.9	7,040.0	81.4	81.0	-122.29	-407.6	2,957.2	413.7	276.0	137.68	3.005				
10,300.0	6,819.0	10,486.9	7,040.0	83.8	83.5	-122.29	-407.6	3,057.2	413.7	271.9	141.80	2.917				

CC - Min centre to center distance or convergent point, SF - min separation factor, ES - min ellipse separation

Anticollision Report

Company:	EnCana Oil & Gas (USA) Inc	Local Co-ordinate Reference:	Well Boyd 3G-19H-M368
Project:	DJ Wattenberg	TVD Reference:	WELL @ 5029.0ft (Original Well Elev)
Reference Site:	S19-T3N-R68W (Boyd)	MD Reference:	WELL @ 5029.0ft (Original Well Elev)
Site Error:	0.0ft	North Reference:	True
Reference Well:	Boyd 3G-19H-M368	Survey Calculation Method:	Minimum Curvature
Well Error:	0.0ft	Output errors are at	2.00 sigma
Reference Wellbore	Hz	Database:	USA EDM 5000 Multi Users DB
Reference Design:	Plan #1	Offset TVD Reference:	Offset Datum

Offset Design													Offset Site Error:	0.0 ft	
Survey Program: 0-Geolink MWD													Offset Well Error:		0.0 ft
Reference		Offset		Semi Major Axis			Distance						Warning		
Measured Depth (ft)	Vertical Depth (ft)	Measured Depth (ft)	Vertical Depth (ft)	Reference (ft)	Offset (ft)	Highside Toolface (°)	Offset Wellbore Centre +N/-S (ft)	+E/-W (ft)	Between Centres (ft)	Between Ellipses (ft)	Total Uncertainty Axis	Separation Factor			
10,400.0	6,819.0	10,586.9	7,040.0	86.2	85.9	-122.29	-407.6	3,157.2	413.7	267.8	145.93	2.835			
10,500.0	6,819.0	10,686.9	7,040.0	88.7	88.3	-122.29	-407.6	3,257.2	413.7	263.6	150.06	2.757			
10,600.0	6,819.0	10,786.9	7,040.0	91.1	90.8	-122.29	-407.6	3,357.2	413.7	259.5	154.19	2.683			
10,700.0	6,819.0	10,886.9	7,040.0	93.5	93.2	-122.29	-407.6	3,457.2	413.7	255.4	158.33	2.613			
10,800.0	6,819.0	10,986.9	7,040.0	96.0	95.7	-122.29	-407.6	3,557.2	413.7	251.2	162.47	2.546			
10,900.0	6,819.0	11,086.9	7,040.0	98.4	98.1	-122.29	-407.6	3,657.2	413.7	247.1	166.61	2.483			
11,000.0	6,819.0	11,186.9	7,040.0	100.9	100.6	-122.29	-407.6	3,757.2	413.7	242.9	170.76	2.423			
11,100.0	6,819.0	11,286.9	7,040.0	103.3	103.0	-122.29	-407.6	3,857.2	413.7	238.8	174.90	2.365			
11,200.0	6,819.0	11,386.9	7,040.0	105.7	105.5	-122.29	-407.6	3,957.2	413.7	234.6	179.05	2.310			
11,300.0	6,819.0	11,486.9	7,040.0	108.2	107.9	-122.29	-407.6	4,057.2	413.7	230.5	183.20	2.258			
11,400.0	6,819.0	11,586.9	7,040.0	110.6	110.4	-122.29	-407.6	4,157.2	413.7	226.3	187.36	2.208			
11,413.0	6,819.0	11,600.0	7,040.0	110.9	110.7	-122.29	-407.6	4,170.2	413.7	225.8	187.90	2.202 SF			

Anticollision Report

Company:	EnCana Oil & Gas (USA) Inc	Local Co-ordinate Reference:	Well Boyd 3G-19H-M368
Project:	DJ Wattenberg	TVD Reference:	WELL @ 5029.0ft (Original Well Elev)
Reference Site:	S19-T3N-R68W (Boyd)	MD Reference:	WELL @ 5029.0ft (Original Well Elev)
Site Error:	0.0ft	North Reference:	True
Reference Well:	Boyd 3G-19H-M368	Survey Calculation Method:	Minimum Curvature
Well Error:	0.0ft	Output errors are at	2.00 sigma
Reference Wellbore	Hz	Database:	USA EDM 5000 Multi Users DB
Reference Design:	Plan #1	Offset TVD Reference:	Offset Datum

Reference Depths are relative to WELL @ 5029.0ft (Original Well Elev) Coordinates are relative to: Boyd 3G-19H-M368
 Offset Depths are relative to Offset Datum Coordinate System is US State Plane 1983, Colorado Northern Zone
 Central Meridian is -105.500000 ° Grid Convergence at Surface is: 0.29°

