



Scale 1:240 (5"=100') Imperial  
Measured Depth Log

**Well Name:** McElmo Dome HOVENWEEP B-6 (HB-6) Lateral ML-528

**Location:** SHL: 1138 FNL & 2443 FEL, Sec. 36, T38N, R19W NMPM

**License Number:** API 05 083 06699 00

**Region:** Colorado

**Spud Date:** 04/05/2012

**Drilling Completed:** 13APR2013

**Surface Coordinates:** SHL: 1138 FNL & 2443 FEL, Sec. 36, T38N, R19W NMPM

**Bottom Hole Coordinates:** Horizontal Well, 862 FSL & 2459 FEL, sECT 25, T38N, R119W 0 deg azimuth from SHL,  
(max Lateral extension)

**Ground Elevation (ft):** 6317'

**K.B. Elevation (ft):** 6342.5'

**Logged Interval (ft):** 7914'

**To:** 9890'

**Total Depth (ft):** 9890'

**Formation:** Leadville Limestone Carbonate

**Type of Drilling Fluid:** FRESH WATER

Printed by MUD.LOG from WellSight Systems 1-800-447-1534 [www.WellSight.com](http://www.WellSight.com)

#### OPERATOR

**Company:** KINDER MORGAN CO2 CO LP

**Address:** 17801 HWY 481  
Colorado

#### GEOLOGIST

**Name:** Leon Walters

**Company:** ABOVE ENTERPRISE

**Address:** 510 Old Lubbock Hwy  
Snyder Tx 79549

#### Cores



**TVD Lateral Hold 8070'**

**TD @ 9890' 13APR2013**

**TIMED  
DRILLING**

SCALE  
CHANGE  
FROM

65min/ft to  
15min/ft  
@ 7934'

**SLIDING**

SVY-7949'  
INC-12.82  
AZM-355.16  
TVD-7945.92'

SVY-7964'  
INC-18.23  
AZM-354.55  
TVD-7960.37'

SVY-7981'  
INC-25.16  
AZM-355.39  
TVD-7976.15'

SVY-7996'  
INC-31.39  
AZM-356.10  
TVD-7989.36'

SVY-8012'  
INC-38.29  
AZM-356.62  
TVD-8002.48'

SVY-8044'  
INC-49.11  
AZM-1.13  
TVD-8025.56'

SVY-8057'  
INC-54.25  
AZM-5.06  
TVD-8033.6

WOB-10  
RPM-311 VIS-29  
MW-8.5

SVY-8076'  
INC-61.50  
AZM-8.05  
TVD-8043.72'

SVY-8091'  
INC-67.75  
AZM-6.80  
TVD-8050.00'

**CMT**

**TIMED DRILLING**

LS: OFFFWH-WH, FRM-HD, MICRXLN-FXLN, SMTH  
CRYPTXLN IP, TXT/SMTH-VITRUS

**ROP SCALE CHANGE FROM  
65min/ft to 15min/ft @ 7934'**

LS: OFFFWH-WH, FRM-HD, MICRXLN-FXLN, SMTH  
CRYPTXLN IP, TXT/SMTH-VITRUS

DOL: OFFFWH-LTGY, FRM-HD, MICRXLN-GRNY,  
IP-VUGULAR, TXT/SMTH-GRNL-SUCR

LS: OFFFWH-WH, FRM-HD, MICRXLN-FXLN, SMTH  
CRYPTXLN IP, TXT/SMTH-VITRUS

DOL: OFFFWH-LTGY, FRM-HD, MICRXLN-GRNY,  
IP-VUGULAR, TXT/SMTH-GRNL-SUCR

DOL: OFFFWH-LTGY, FRM-HD, MICRXLN-GRNY,  
IP-VUGULAR, TXT/SMTH-GRNL-SUCR

DOL: OFFFWH-LTGY, FRM-HD, MICRXLN-GRNY,  
IP-VUGULAR, TXT/SMTH-GRNL-SUCR

DOL: OFFFWH-LTGY, FRM-HD, MICRXLN-GRNY,  
IP-VUGULAR, TXT/SMTH-GRNL-SUCR

DOL: OFFFWH-LTGY, FRM-HD, MICRXLN-GRNY,  
IP-VUGULAR, TXT/SMTH-GRNL-SUCR

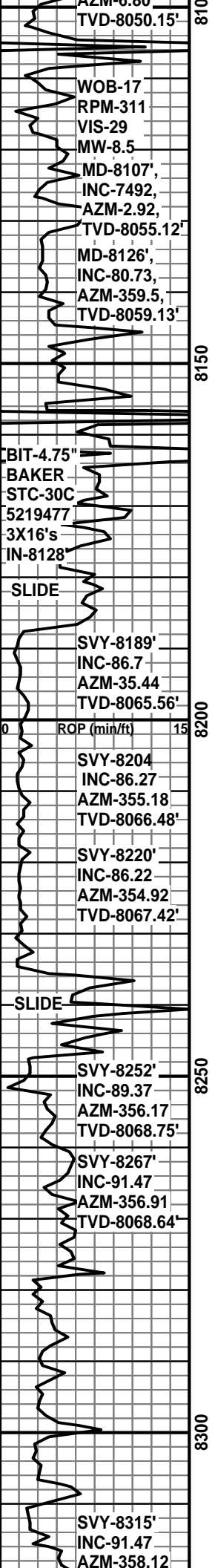
**04APR13 DRLG @ 8065'**

DOL: LTGY-DKGY, FRM-HD, GRNY-SUCR, IP-VUGULAR,  
TXT/GRNL-SUCR

DOL: LTGY-DKGY, FRM-HD, GRNY-SUCR, IP-VUGULAR,  
TXT/GRNL-SUCR

TG (units) 20  
CO2 (PPM) 10

C1 (PPM) 1000  
C2 (PPM) 1000  
C3 (PPM) 1000  
C4 (PPM) 1000



DOL: LTGY-DKGY, FRM-HD, GRNY-SUCR, IP-VUGULAR, TXT/GRNL-SUCR

### 05APR13 DEPTH 8128, TVD-8087', TIH w/Lateral BHA, Went Underbalanced

DOL: OFFFWH-LTGY-DKGY, FRM-HD, GRNY-SUCR, IP-VUGULAR, TXT/GRNL-SUCR, TR-CHT

BIT-4.75" BAKER STC-30C 5219477 3X16's  
IN-@-8128'

### 06APR13 DEPTH 8158', DRLG

DOL: OFFFWH-LTGY-DKGY, FRM-HD, GRNY-SUCR, IP-VUGULAR, TXT/GRNL-SUCR, TR-CHT

CHT: OFFFWH-MILKY-TRNSL-LTGY, XHD-DNS, CPTOXLN, SMTH-VITRUS, NO POR

### 07APR13 DRLG DEPTH 8172'-TVD-8061'est,

DOL: OFFFWH-LTGY-DKGY, FRM-HD, GRNY-SUCR, IP-VUGULAR, TXT/GRNL-SUCR, TR-CHT

CHT: OFFFWH-MILKY-TRNSL-LTGY, XHD-DNS, CPTOXLN, SMTH-VITRUS, NO POR

DOL: OFFFWH-LTGY-DKGY, FRM-HD, GRNY-SUCR, IP-VUGULAR, TXT/GRNL-SUCR, TR-CHT

DOL: OFFFWH-LTGY-DKGY, FRM-HD, GRNY-SUCR, IP-VUGULAR, TXT/GRNL-SUCR, TR-CHT

DOL: LTGY-DKGY, FRM-HD, GRNY-SUCR, IP-VUGULAR, TXT/GRNL-SUCR, TR-CHT

DOL: LTGY-DKGY, FRM-HD, GRNY-SUCR, IP-VUGULAR, TXT/GRNL-SUCR, TR-CHT

DOL: LTGY-DKGY, FRM-HD, GRNY-SUCR, IP-VUGULAR, TXT/GRNL-SUCR, TR-CHT

DOL: LTGY-DKGY, FRM-HD, GRNY-SUCR, IP-VUGULAR, TXT/GRNL-SUCR, TR-CHT

0 0.5 1 1.5 2 2.5 3 3.5 4 4.5 5 5.5 6 6.5 7 7.5 8 8.5 9 9.5 10 10.5 11 11.5 12 12.5 13 13.5 14 14.5 15 15.5 16 16.5 17 17.5 18 18.5 19 19.5 20

TG (units)  
CC2 (PPM)

1 1.5 2 2.5 3 3.5 4 4.5 5 5.5 6 6.5 7 7.5 8 8.5 9 9.5 10 10.5 11 11.5 12 12.5 13 13.5 14 14.5 15 15.5 16 16.5 17 17.5 18 18.5 19 19.5 20

C1 (PPM) 1000  
C2 (PPM) 1000  
C3 (PPM) 1000  
C4 (PPM) 1000

