
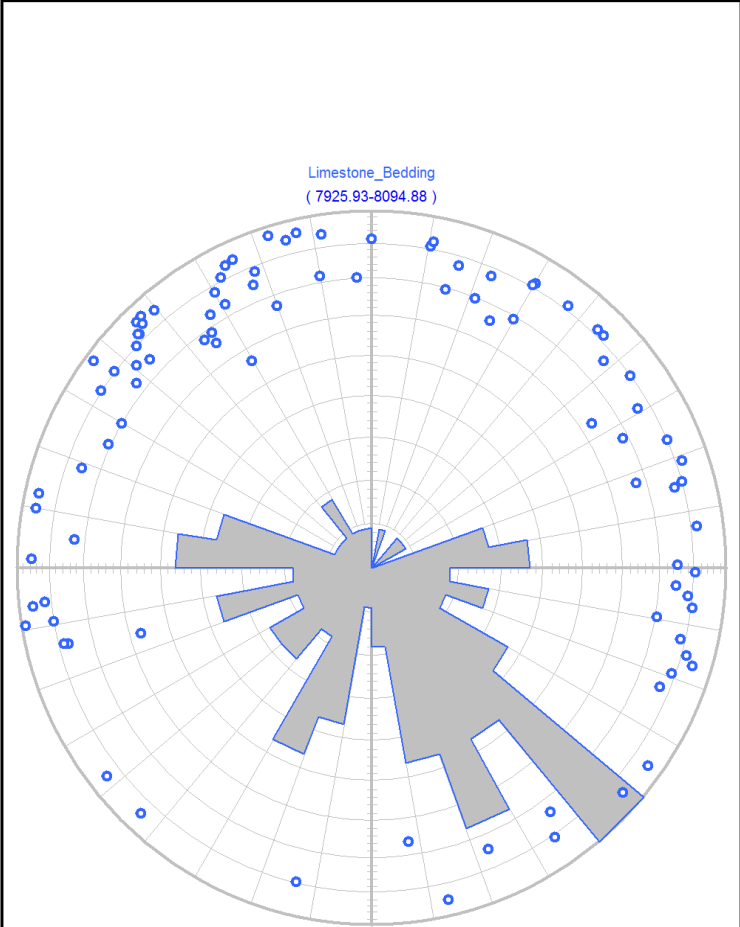
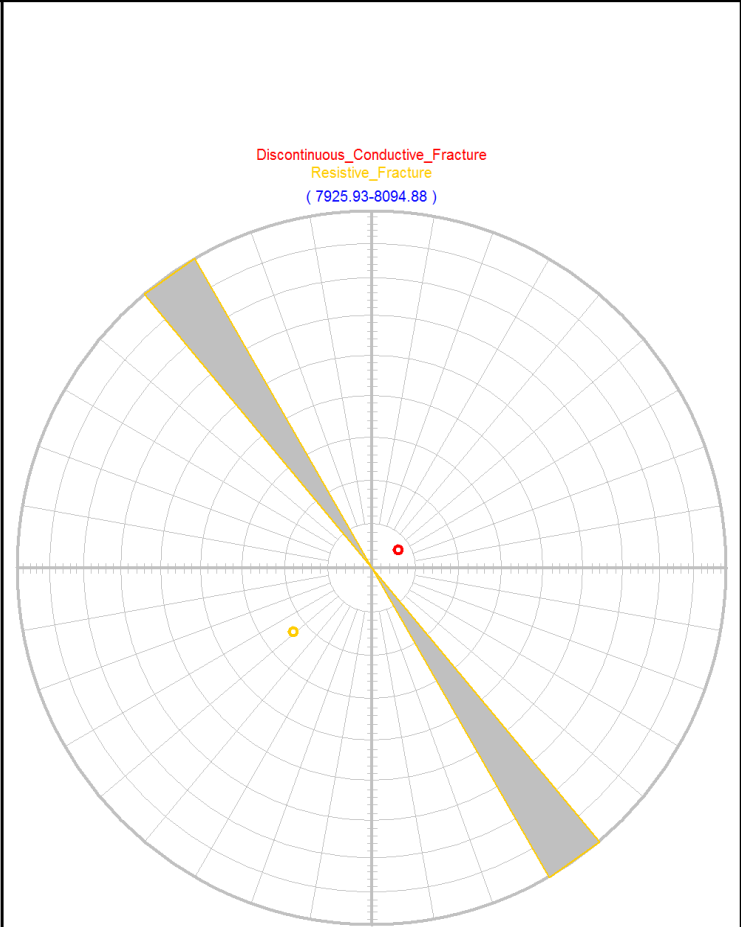
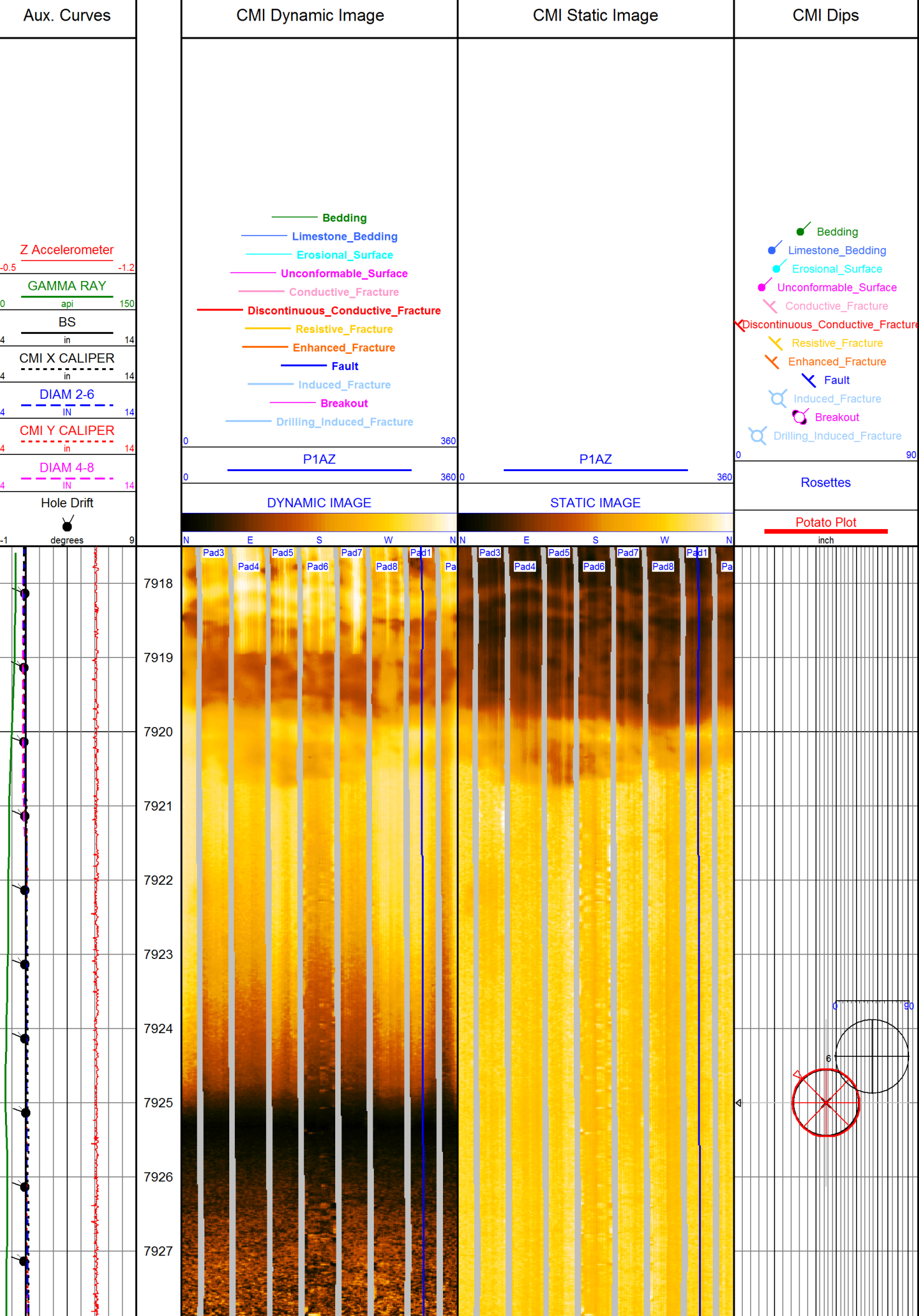
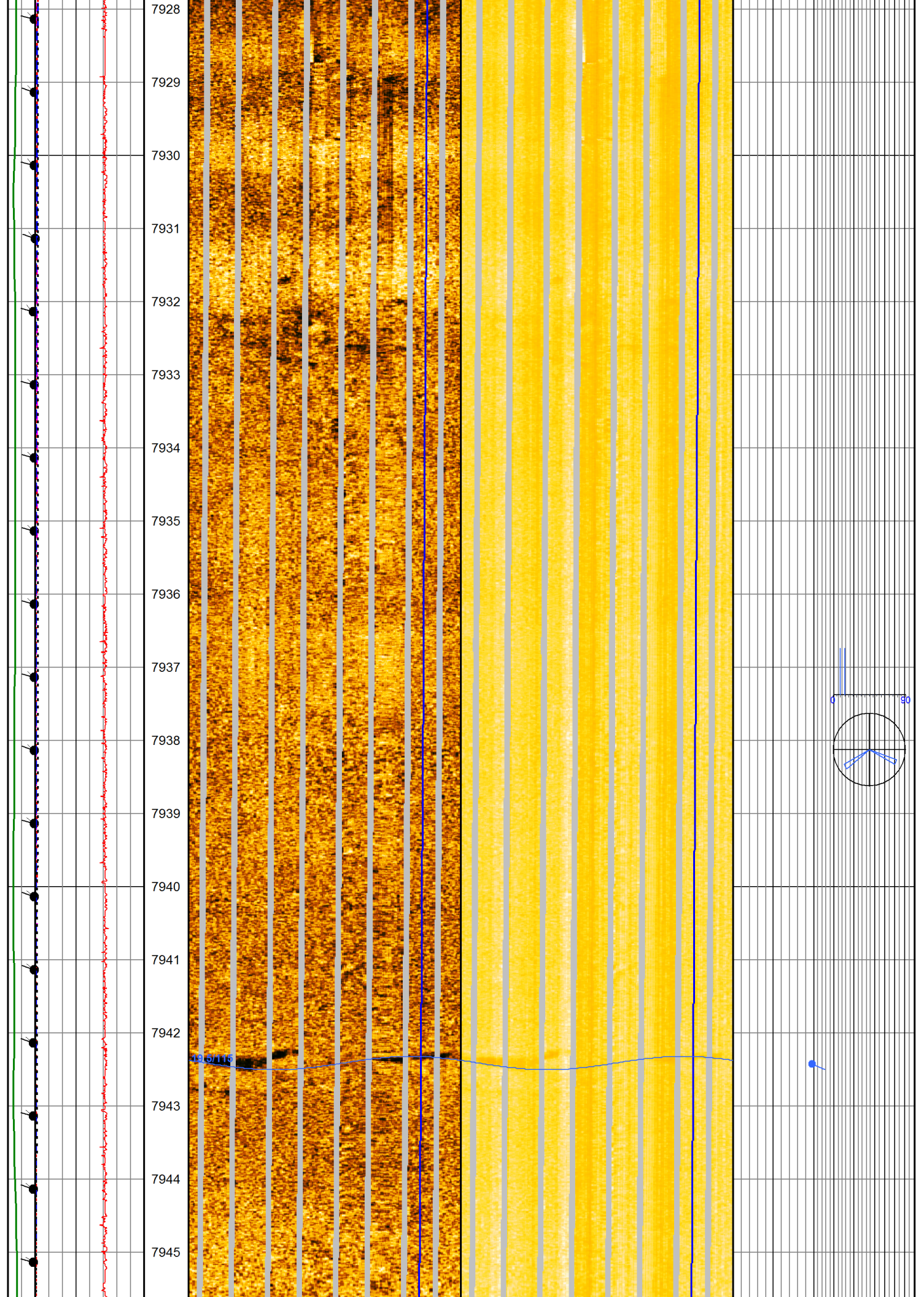


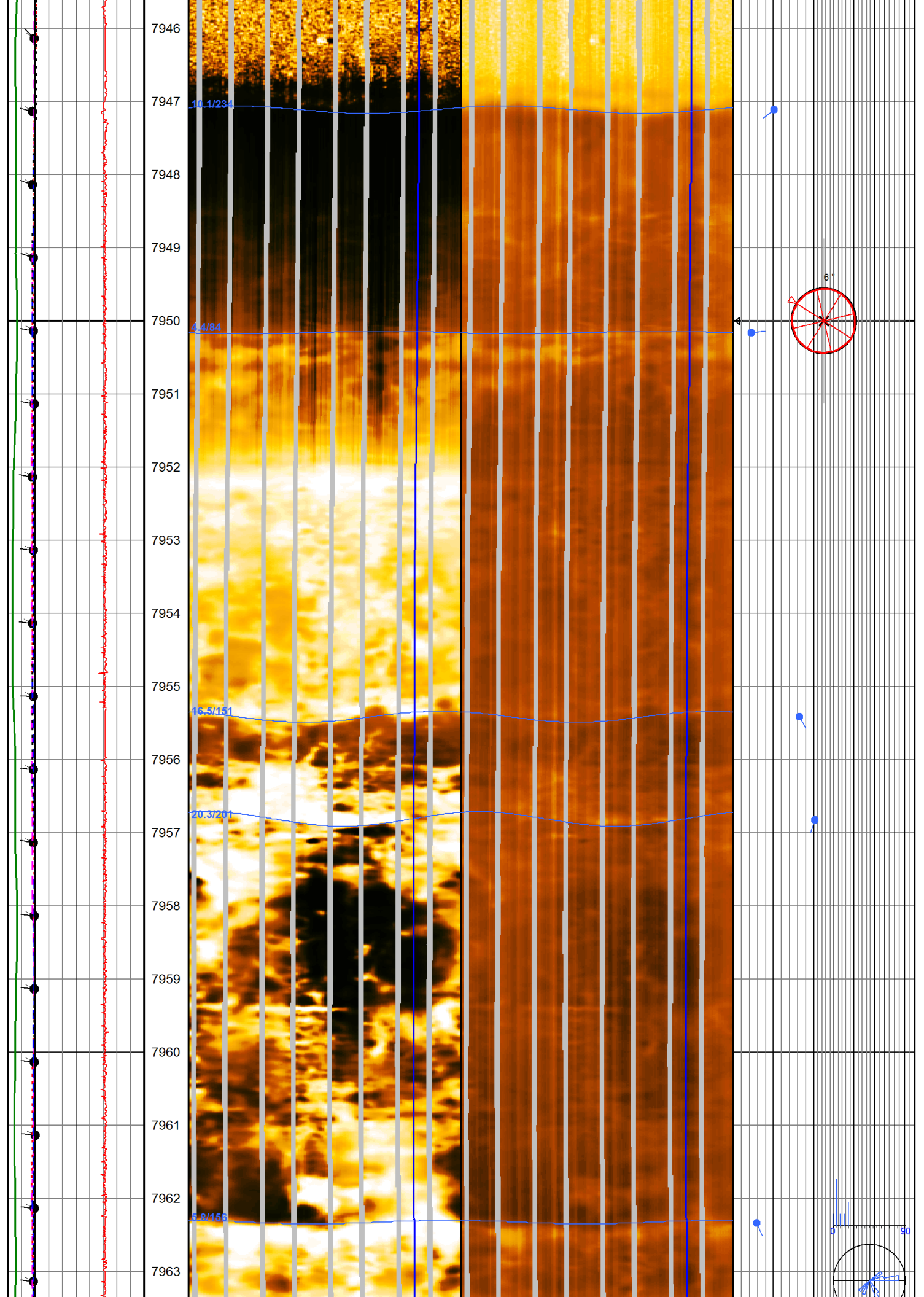
<div><div></div><div><div>Weatherford®</div><div>Compact Micro-Imager Interpretation Results</div></div></div>			
COMPANY: KINDER MORGAN C02 Co. L.P			
WELL: HB #6			
FIELD: MCELMO			
COUNTY: MONTEZUMA	STATE: COLORADO		
Location: 1138' FNL & 2443' FEL	Latitude: 37.512253	Other Services: COMPENSATED NEUTRON COMPENSATED DENSITY SPECTRAL GAMMA RAY MICRO RESISTIVITY LOG DUAL LATEROLOG	
API: 05-083-06699	Longitude: -108.894078		
Licence:			
Permanent Datum: GL	Elevation: 6317.00 ft	Elevations: K.B.: 6342.00 ft	
Log measured from KB	25.00 ft above Permanent Datum	D.F.: 6342.00 ft	
Drilling measured from KB		G.L.: 6317.00 ft	
Date	29-MAR-2013		
Run Number	ONE		
Service Order	3526232		
Depth Driller	8085.00 ft		
Depth Logger	8078.00 ft		
First Reading	8081.00 ft		
Last Reading	7918.00 ft		
Casing Driller	7.00 in @ 7909.00 ft	@	
Casing Logger	7909.00 ft		
Bit Size	6.00 in		
Hole Fluid Type	H2O		
Density	Viscosity	8.50 g/cc	29.00 sec/qt
pH	Fluid Loss	11.90	
Sample Source	PIT		
Rm @ Measured Temperature	0.40 ohm-m	@ 70.00° F	@
Rinf @ Measured Temperature	0.32 ohm-m	@ 70.00° F	@
Rmc @ Measured Temperature	0.48 ohm-m	@ 70.00° F	@
Source Rinf	CALC	CALC	
Rm @ BHT	0.19 ohm-m	@ 153.00° F	@
Time Since Circulation			
Maximum Recorded Temperature	153.00° F	@	@
Equipment No.	Location	13173	GJ/CO
Recorded By	O. GOYZUETA		
Witnessed By	EB NUCKOLS		

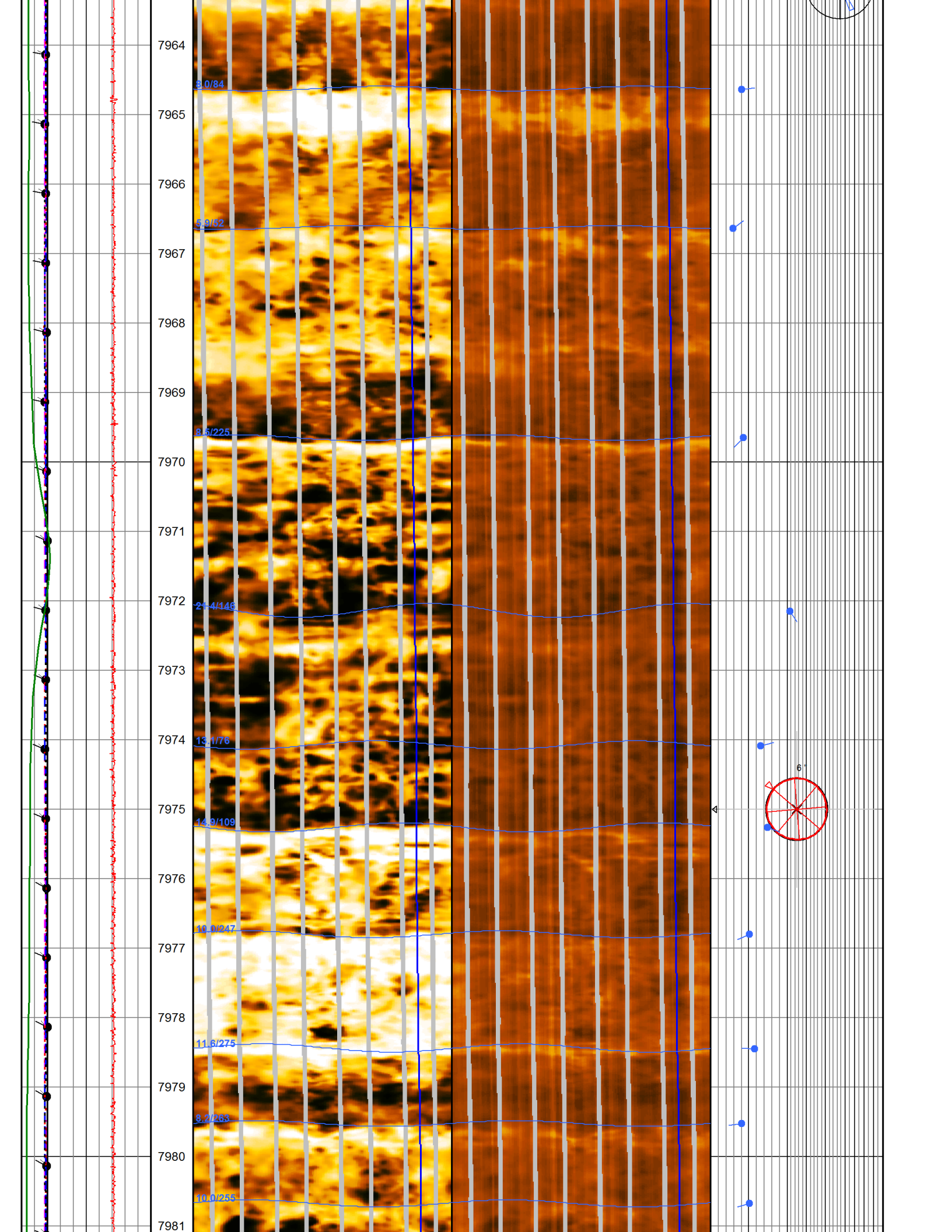
All interpretation of log data are opinions based on inferences from electrical or other measurements. We do not guarantee the accuracy or correctness of any interpretation or recommendation and we shall not be liable or responsible for any loss, cost, damages or expenses incurred or sustained by anyone resulting from any interpretation or recommendation made by any of our employees or agents.			
Rig:	NABORS 405	Remarks:	Service Order # 3526232
Drilling Stopped		CMI PASS DEPTH CORRECTED TO OPEN HOLE GAMMA RAY	
Circulation Stopped		TIGHT PULLS, BOREHOLE SIZE AND RUGOSITY WILL AFFECT DATA QUALITY	
Tool on Bottom			
BHT	153.00° F		
Equipment Data			
Tool Type	Tool Type	Other	
MIE-A.A 174 MIM-A.A 174		PROCESSED BY J TURNER	
CORRELATION PARAMETERS			

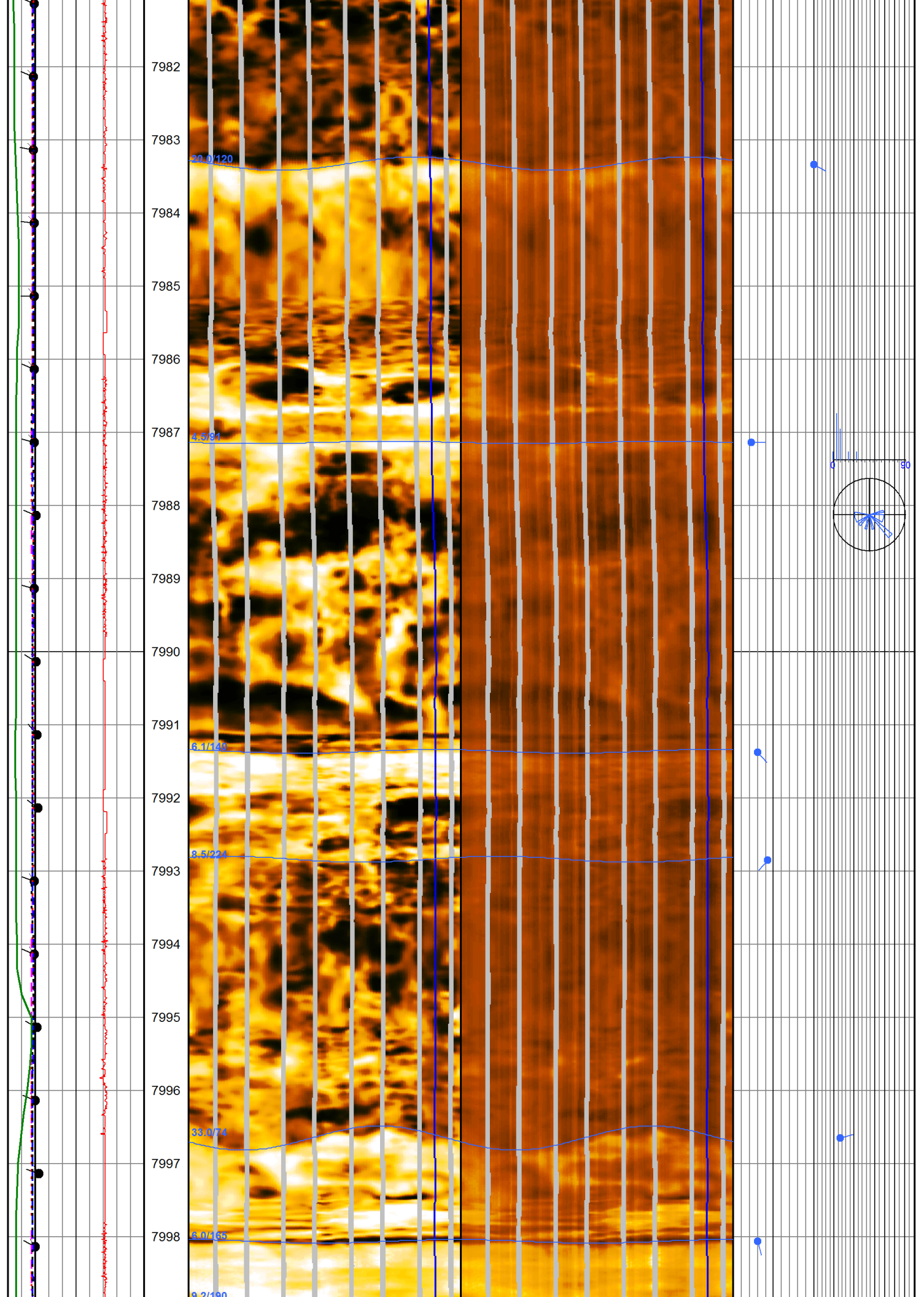
Bedding Planes	Fracture Planes
<div>Schmidt Plot (Dip, Poles to Poles, Upper Hemisphere)</div> <div><div>Limestone_Bedding (7925.93-8094.88)</div><div>Depth: 7925.93-8094.88 (m) Limestone_Bedding: DIP = 6.97 AZIMUTH = 136.1 (no.pt = 92)</div></div>	<div>Schmidt Plot (Strike, Poles to Poles, Upper Hemisphere)</div> <div><div>Discontinuous_Conductive_Fracture Resistive_Fracture (7925.93-8094.88)</div><div>Depth: 7925.93-8094.88 (m) Discontinuous_Conductive_Fracture: DIP = 82.64 STRIKE = 235.0->415.0 (no.pt = 1) Resistive_Fracture: DIP = 66.57 STRIKE = 50.9->230.9 (no.pt = 1)</div></div>
<div>Schmidt Plot (Dip, Poles to Poles, Upper Hemisphere)</div>	<div>Schmidt Plot (Strike, Poles to Poles, Upper Hemisphere)</div>
Bedding Planes	Fracture Planes

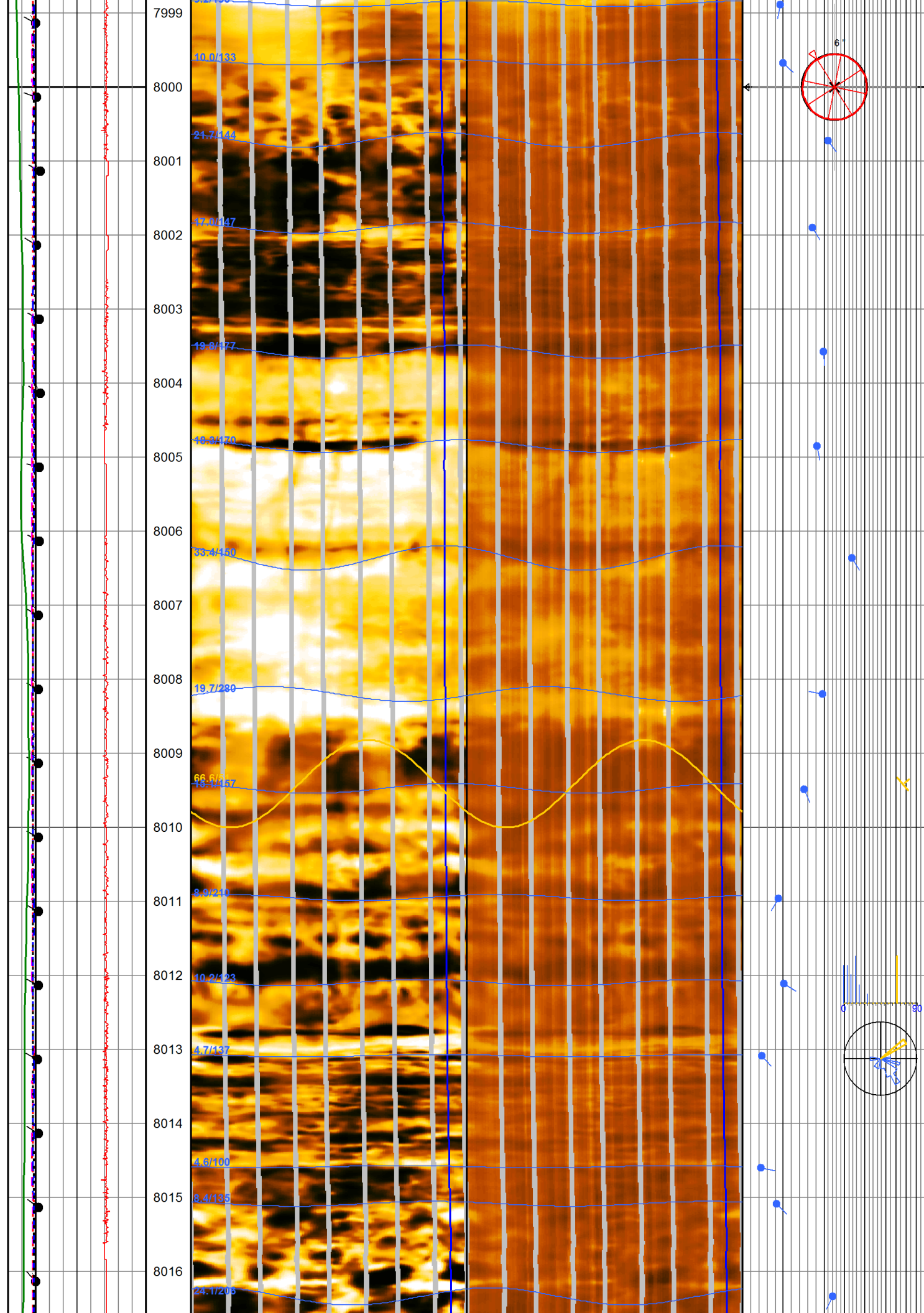


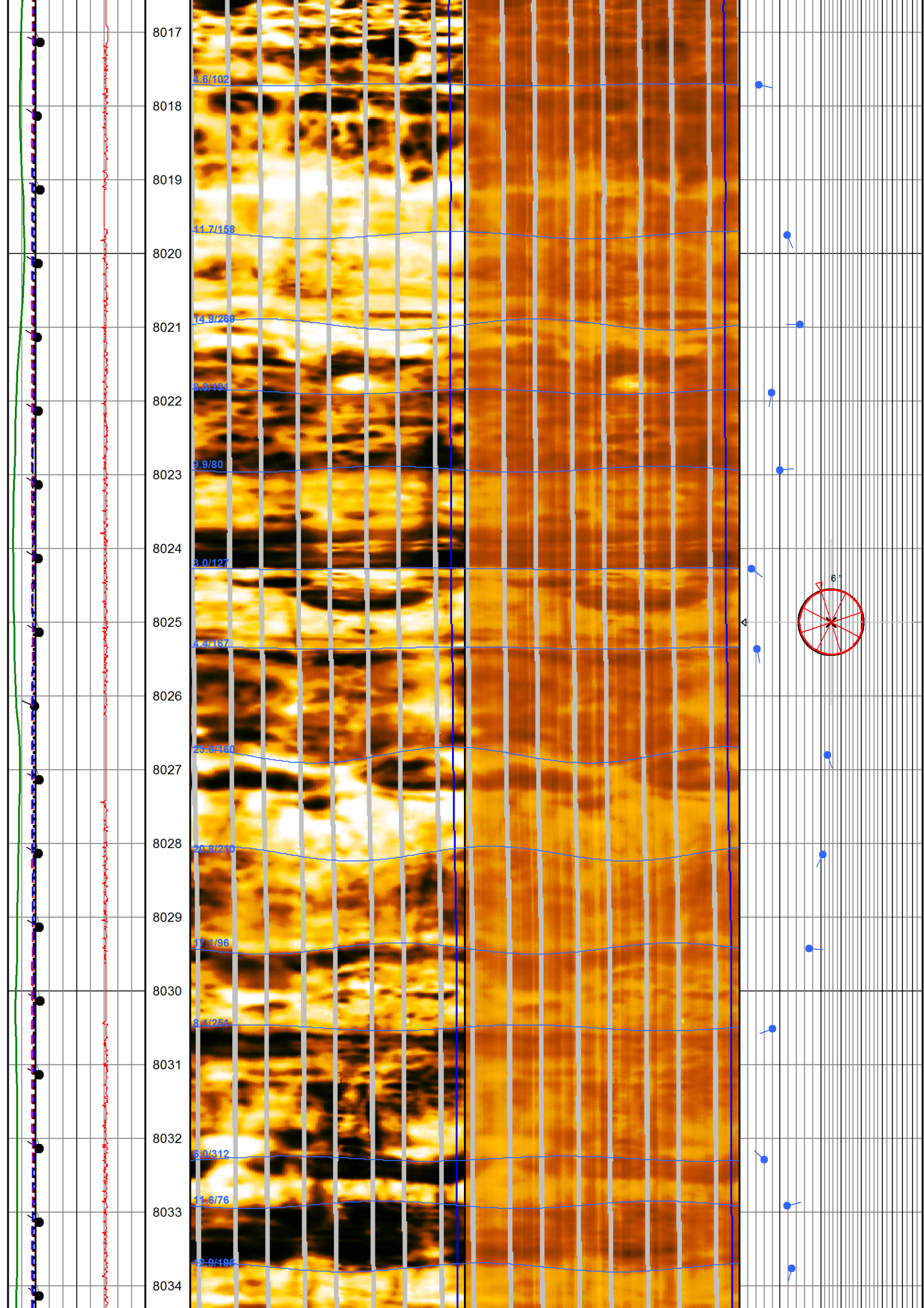


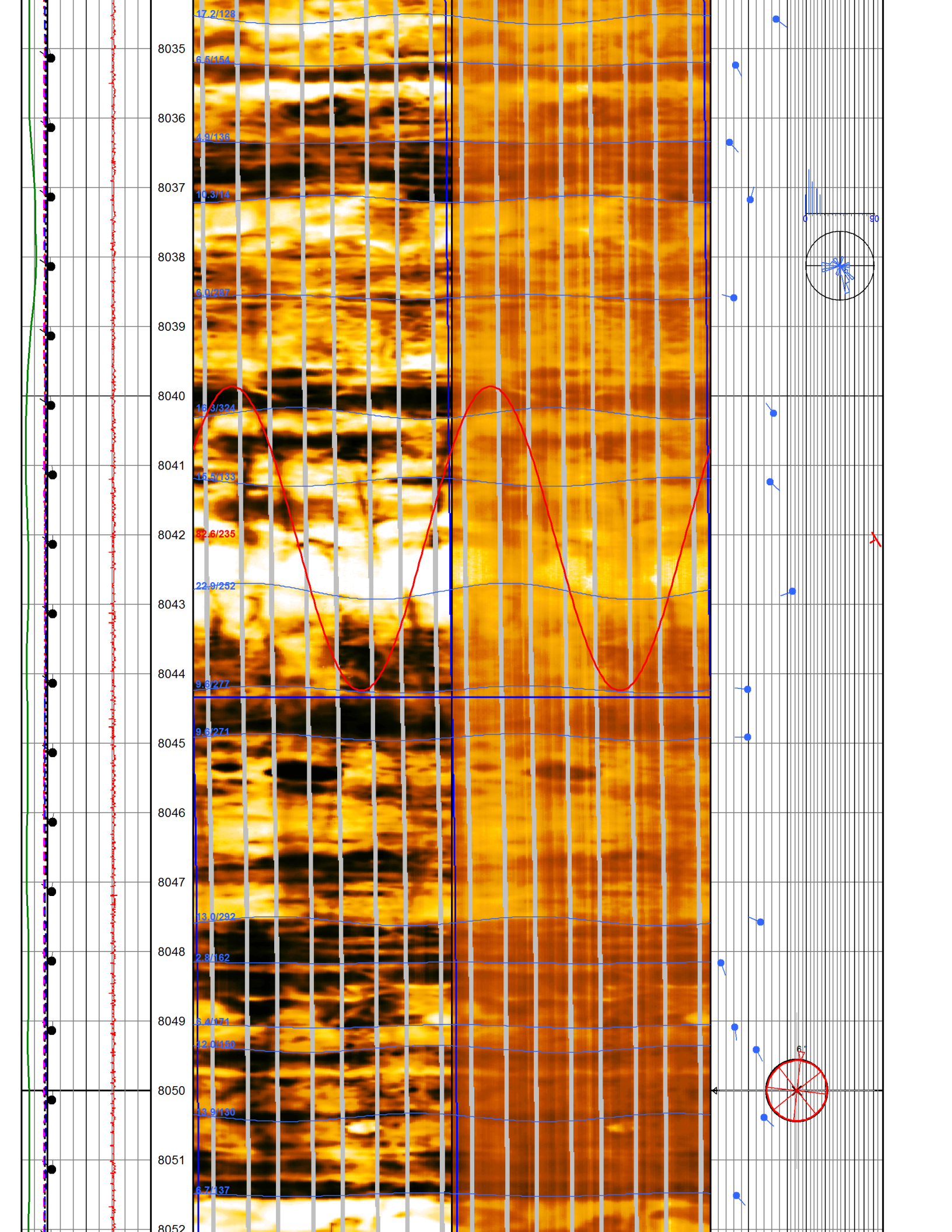


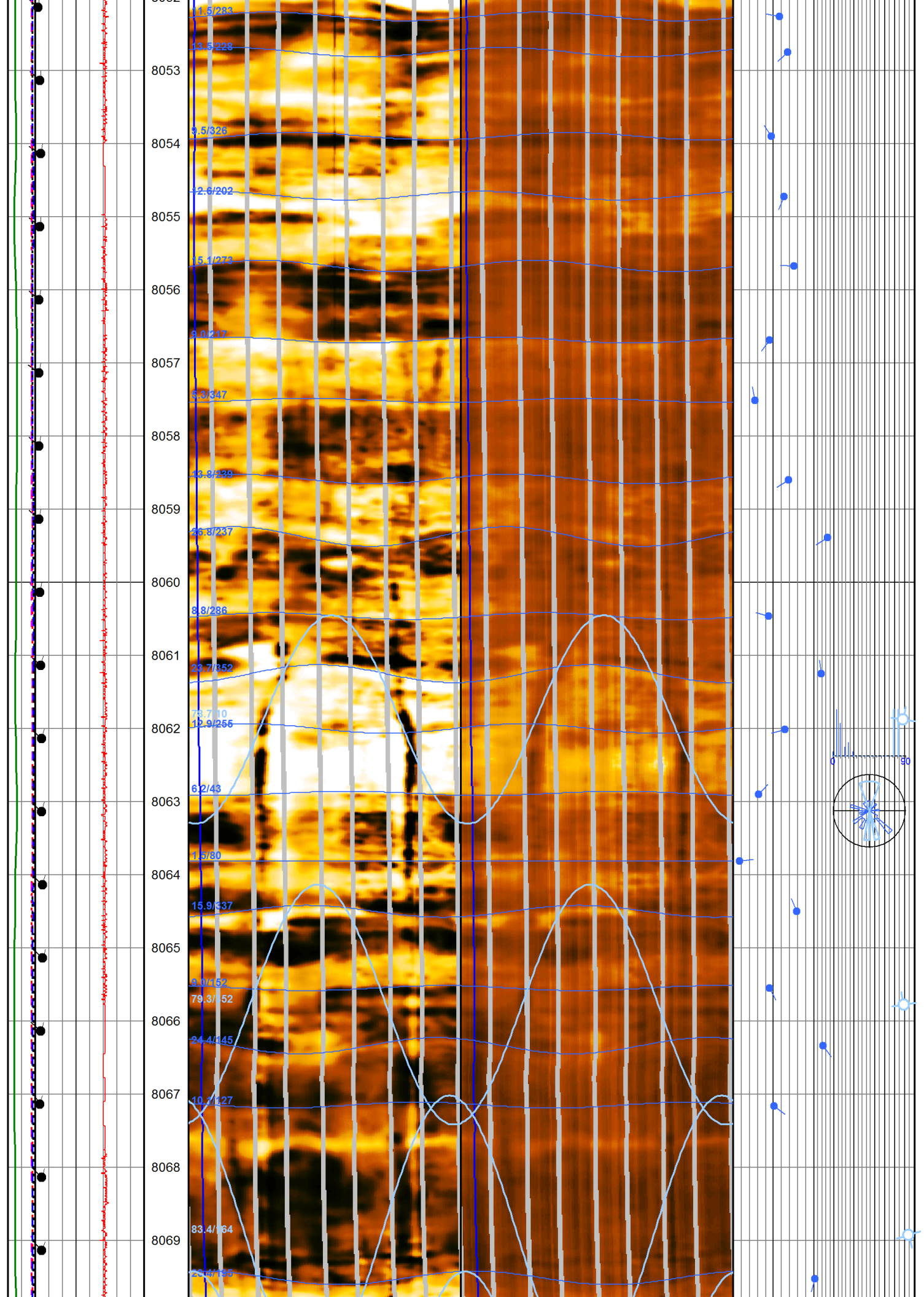


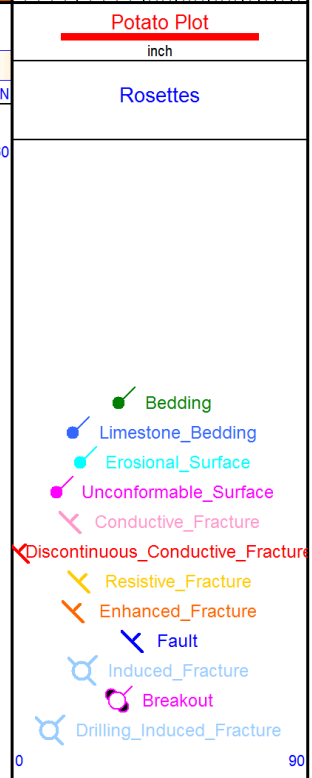
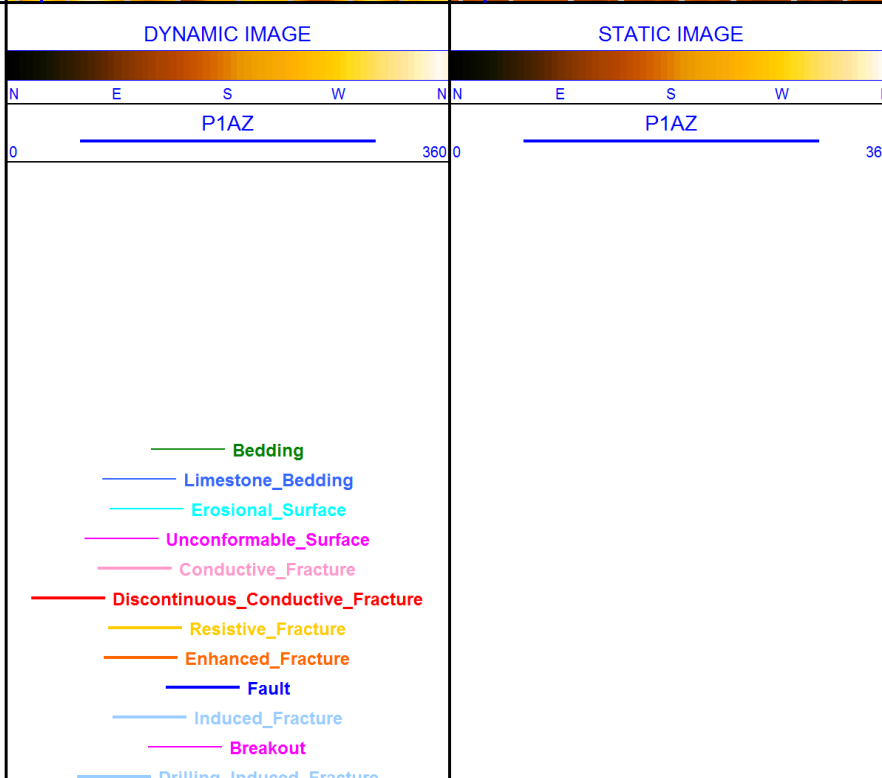
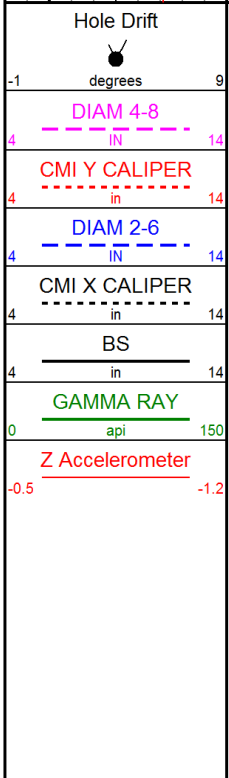
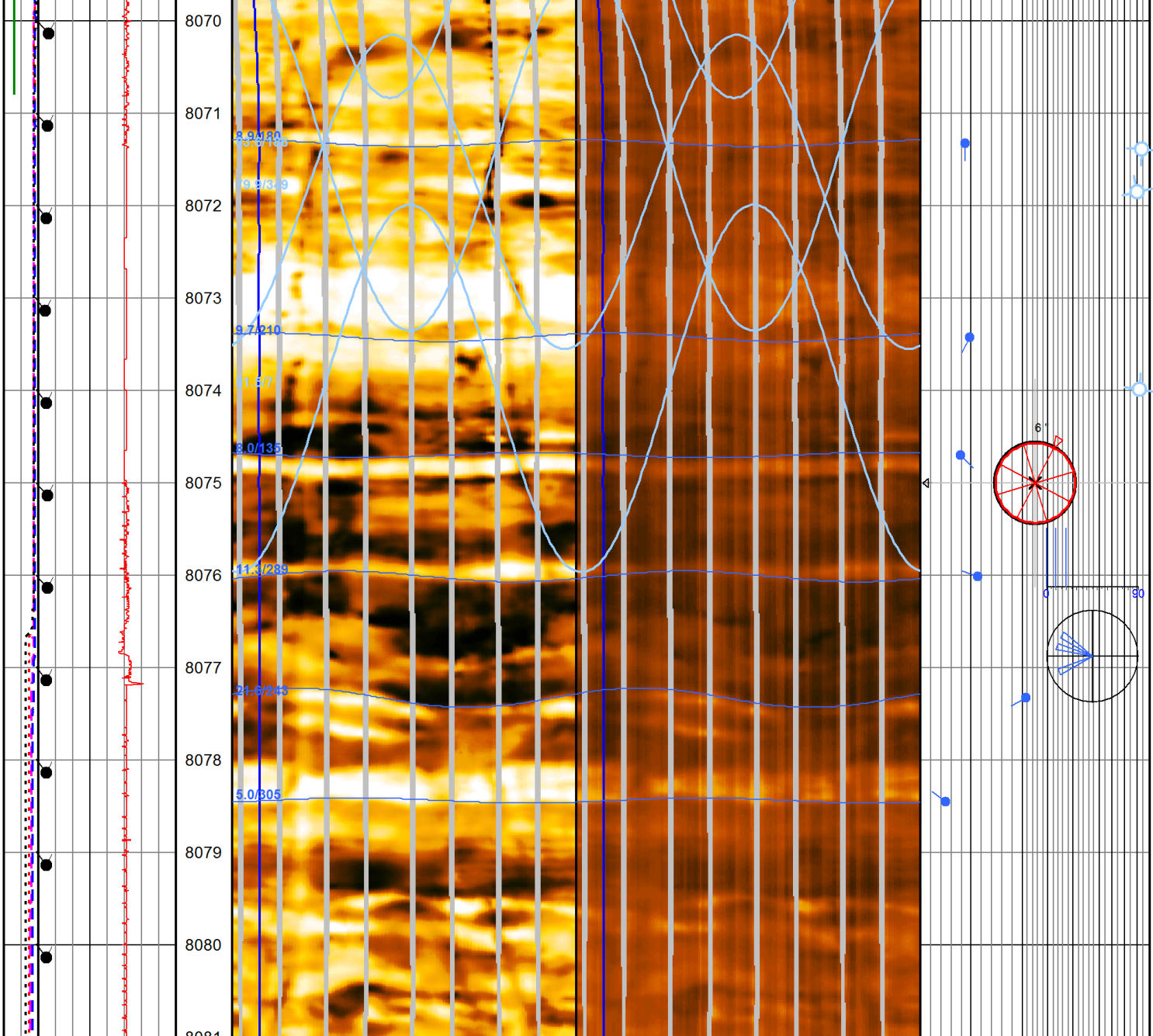













		Drilling-induced fracture 0360	
Aux. Curves		CMI Dynamic Image	CMI Static Image
			CMI Dips

COMPANY:	KINDER MORGAN C02 Co. L.P
WELL:	HB #6
FIELD:	MCELMO
COUNTY:	MONTEZUMA
STATE:	COLORADO



Weatherford[®]

Compact Micro-Imager
Interpretation Results