



Scale 1:240 (5"=100') Imperial  
Measured Depth Log

Well Name: McElmo Dome Hovenweep B-6 (HB-6)  
Location: SHL: 1138 FNL & 2443 FEL, Sec. 36, T38N, R19W NMPM  
License Number: API 05 083 06699 00  
Spud Date: 03/02/13  
Surface Coordinates: SHL: 1138 FNL & 2443 FEL, Sec. 36, T38N, R19W NMPM  
Region: Colorado  
Drilling Completed: 30MAR2013

**Bottom Hole Coordinates:**

Ground Elevation (ft): 6317'      K.B. Elevation (ft): 6342.5'  
Logged Interval (ft): 100'      To: 8085'      Total Depth (ft): 8085'  
Formation: Leadville Limestone Carbonate  
Type of Drilling Fluid: FRESH WATER

Printed by MUD.LOG from WellSight Systems 1-800-447-1534 [www.WellSight.com](http://www.WellSight.com)

**OPERATOR**

Company: KINDER MORGAN CO2 CO LP  
Address: 17801 HWY 481  
Colorado

**GEOLOGIST**

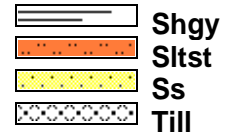
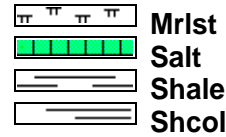
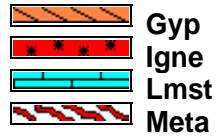
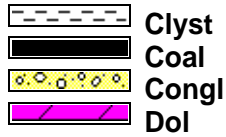
Name: Leon Walters  
Company: ABOVE ENTERPRISE  
Address: 510 Old Lubbock Hwy  
Snyder Tx 79549

**Cores**

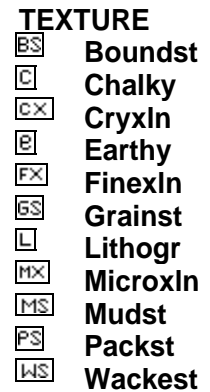
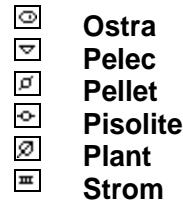
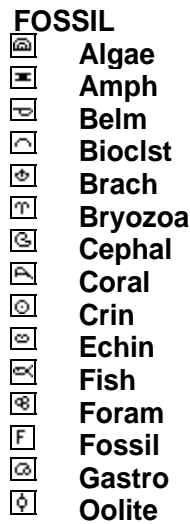
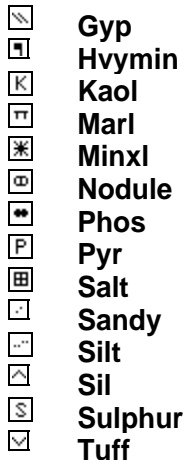
## DSTs

## Comments

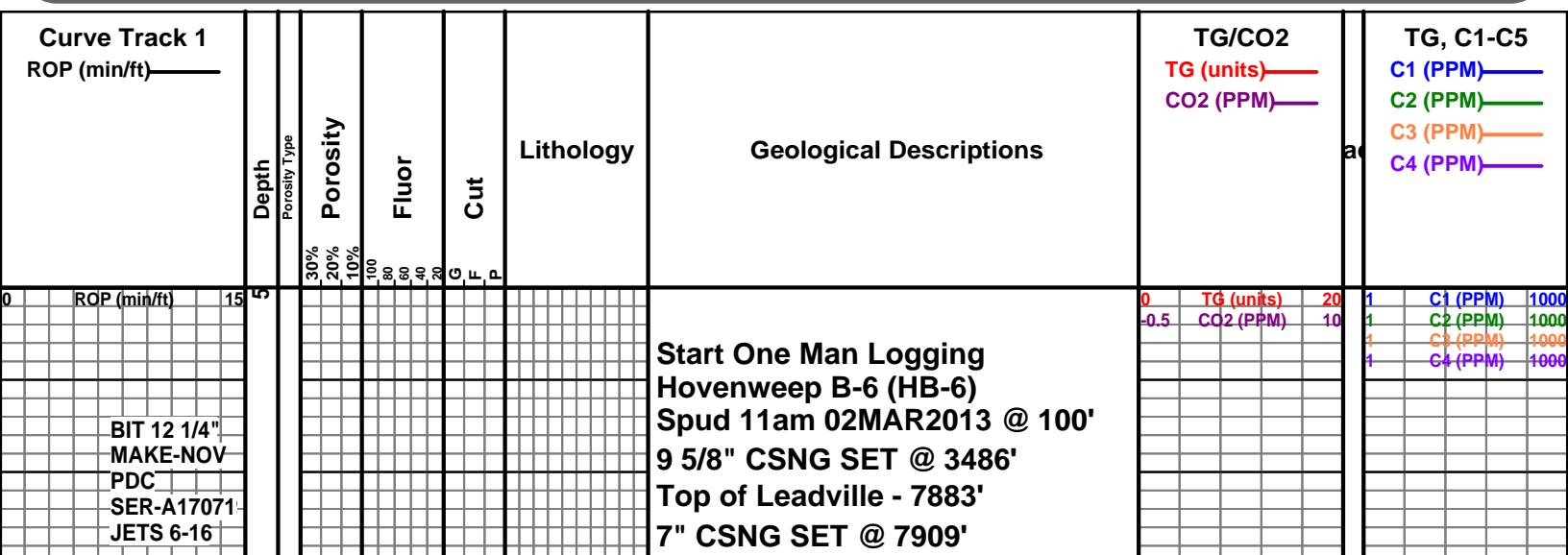
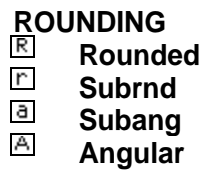
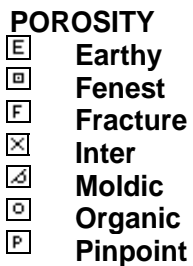
## ROCK TYPES

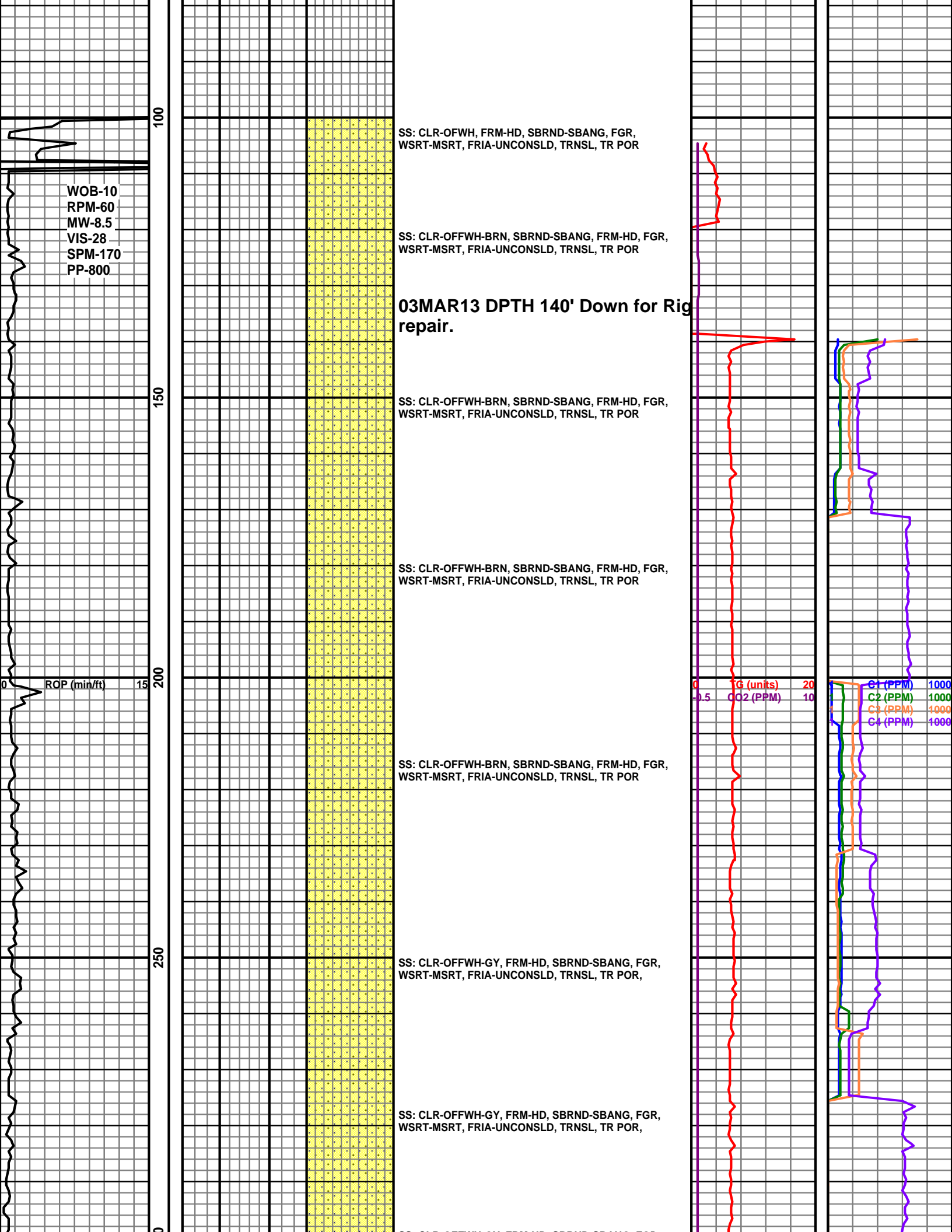


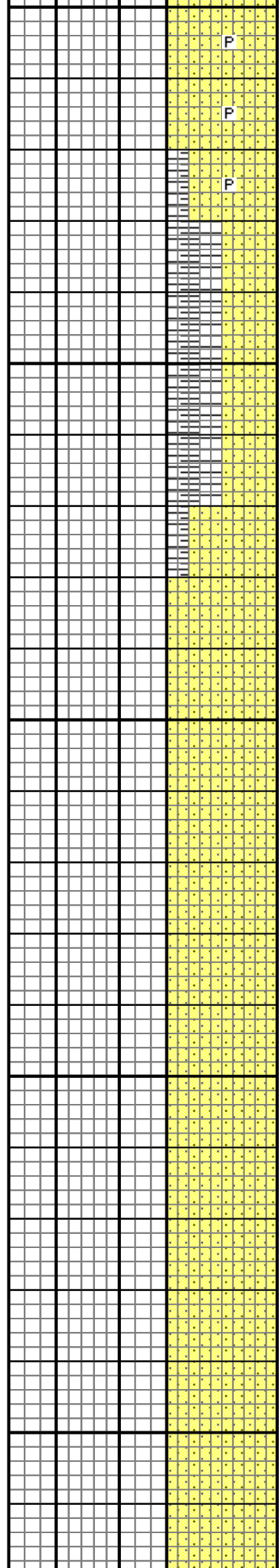
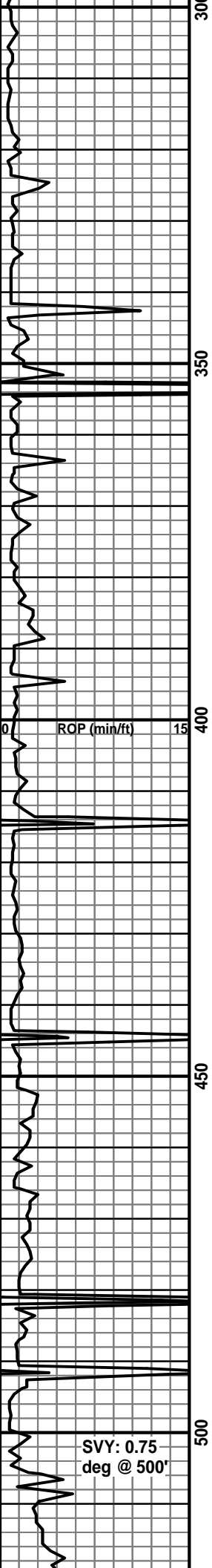
## ACCESSORIES



## OTHER SYMBOLS







SS: CLR-OFFWH-GY, FRM-HD, SBRND-SBANG, FGF  
WSRT-MSRT, FRIA-UNCONSLD, TRNSL, TR POR, ACC:  
PYR, SLI-CALC

**FORMATION CHANGE**

SH: GYGRN, SFT, SBLKY-SBFISS, SMTH-RTHY, SLI-CARB,  
ACC: MICA

SS: CLR-OFFWH-GY, FRM-HD, SBRND-SBANG, FGR,  
WSRT-MSRT, FRIA-UNCONSLD, TRNSL, TR POR,

**FORMATION CHANGE**

SH: RDBRN-OFFWH, SFT, SBLKY-SBFISS, SMTH-RTHY,  
SLI-CARB,

SS: OFFWH-RD/WH MARL-GR, FRM, BRND-SBANG, VFG,  
WSRT, FRIA-CONSLD, TR POR

SS: CLR-OFFWH, FRM-HD, SBRND-SBANG, VFGR,  
WSRT-MSRT, FRIA-UNCONSLD, TRNSL, TR POR,

**FORMATION CHANGE**

SH: GYGRN, SFT, SBLKY-SBFISS, SMTH-RTHY, SLI-CARB

SS: CLR-OFFWH, FRM-HD, SBRND-SBANG, VFGR,  
WSRT-MSRT, FRIA-UNCONSLD, TRNSL, TR POR,

**04MAR13 DPTH 491' RIG DOWN,  
Waiting on Elect.**

SS: CLR-OFFWH, FRM-HD, SBRND-SBANG, VFGR,  
WSRT-MSRT, FRIA-UNCONSLD, TRNSL, TR POR,

