
KINDER MORGAN INC - EBUS

Hovenweep B-6

Texas

Cement Surface Casing

11-Mar-2013

Job Site Documents

The Road to Excellence Starts with Safety

Sold To #: 320986	Ship To #: 2983285	Quote #:	Sales Order #: 900262817
Customer: KINDER MORGAN INC - EBUS		Customer Rep: Cawthorn, Valerie	
Well Name: Hovenweep	Well #: B-6	API/UWI #:	
Field:	City (SAP): CORTEZ	County/Parish:	State: Texas
Contractor: Nabors		Rig/Platform Name/Num: Nabors 405	
Job Purpose: Cement Surface Casing			
Well Type: Producing Well		Job Type: Cement Surface Casing	
Sales Person: KEERAN, RYAN		Srvc Supervisor: WOOD, BRANDON	MBU ID Emp #: 412753

Job Personnel

HES Emp Name	Exp Hrs	Emp #	HES Emp Name	Exp Hrs	Emp #	HES Emp Name	Exp Hrs	Emp #
BEGAY, LYDELL James	8	479804	CHEE, NEWMAN Lamar	22.5	515460	JOHNSON, RICKEY Allen	22.5	516411
WOOD, BRANDON M	22.5	412753						

Equipment

HES Unit #	Distance-1 way	HES Unit #	Distance-1 way	HES Unit #	Distance-1 way	HES Unit #	Distance-1 way
10025040	117 mile	10025041	117 mile	10713294	117 mile	10822043	117 mile
11324578	117 mile	11381461	117 mile	11583928	117 mile		

Job Hours

Date	On Location Hours	Operating Hours	Date	On Location Hours	Operating Hours	Date	On Location Hours	Operating Hours

TOTAL Total is the sum of each column separately

Job

Formation Name	Formation Depth (MD)	Top	Bottom	Job Type	Job depth MD	Job Depth TVD	Water Depth	Perforation Depth (MD)	From	To
				BHST	3478.5 m	3434.6 m				
						9. m				

Job Times

Date	Time	Time Zone
10 - Mar - 2013	10:30	MST
11 - Mar - 2013	03:30	MST
11 - Mar - 2013	07:50	MST
11 - Mar - 2013	00:35	MST
12 - Mar - 2013	02:00	MST

Well Data

Description	New / Used	Max pressure MPa	Size mm	ID mm	Weight kg/m	Thread	Grade	Top MD m	Bottom MD m	Top TVD m	Bottom TVD m
12 1/4" Open Hole				12.25				.	3486.		
9 5/8" Surface Casing	Unknown		9.625	8.921	36.		K-55	.	3486.		

Sales/Rental/3rd Party (HES)

Description	Qty	Qty uom	Depth	Supplier
PLUG,CMTG,TOP,9 5/8,HWE,8.16 MIN/9.06 MA	1	EA		
CLR,FLT,9-5/8 8RD 29.3-40PPF,2-3/4	1	EA		
SHOE,FLT,TROPHY SEAL,9 5/8 8RD	1	EA		
AUTOFILL KIT,TROPHY SEAL	2	EA		
CENTRALIZER-9-5/8"-CSG-12 1/4"-HINGED	8	EA		
COLLAR-STOP-9 5/8"-FRICTION-HINGED	2	EA		
KIT,HALL WELD-A	2	EA		
SUGAR, GRANULATED, IMPERIAL	300	LB		

Tools and Accessories

Type	Size	Qty	Make	Depth	Type	Size	Qty	Make	Depth	Type	Size	Qty	Make
Guide Shoe					Packer					Top Plug			
Float Shoe					Bridge Plug					Bottom Plug			
Float Collar					Retainer					SSR plug set			
Insert Float										Plug Container			

The Road to Excellence Starts with Safety

Sold To #: 320986	Ship To #: 2983285	Quote #:	Sales Order #: 900262817
Customer: KINDER MORGAN INC - EBUS		Customer Rep: Cawthorn, Valerie	
Well Name: Hovenweep		Well #: B-6	API/UWI #:
Field:	City (SAP): CORTEZ	County/Parish:	State: Texas
Legal Description:			
Lat:		Long:	
Contractor: Nabors		Rig/Platform Name/Num: Nabors 405	
Job Purpose: Cement Surface Casing			Ticket Amount:
Well Type: Producing Well		Job Type: Cement Surface Casing	
Sales Person: KEERAN, RYAN		Srv Supervisor: WOOD, BRANDON	MBU ID Emp #: 412753

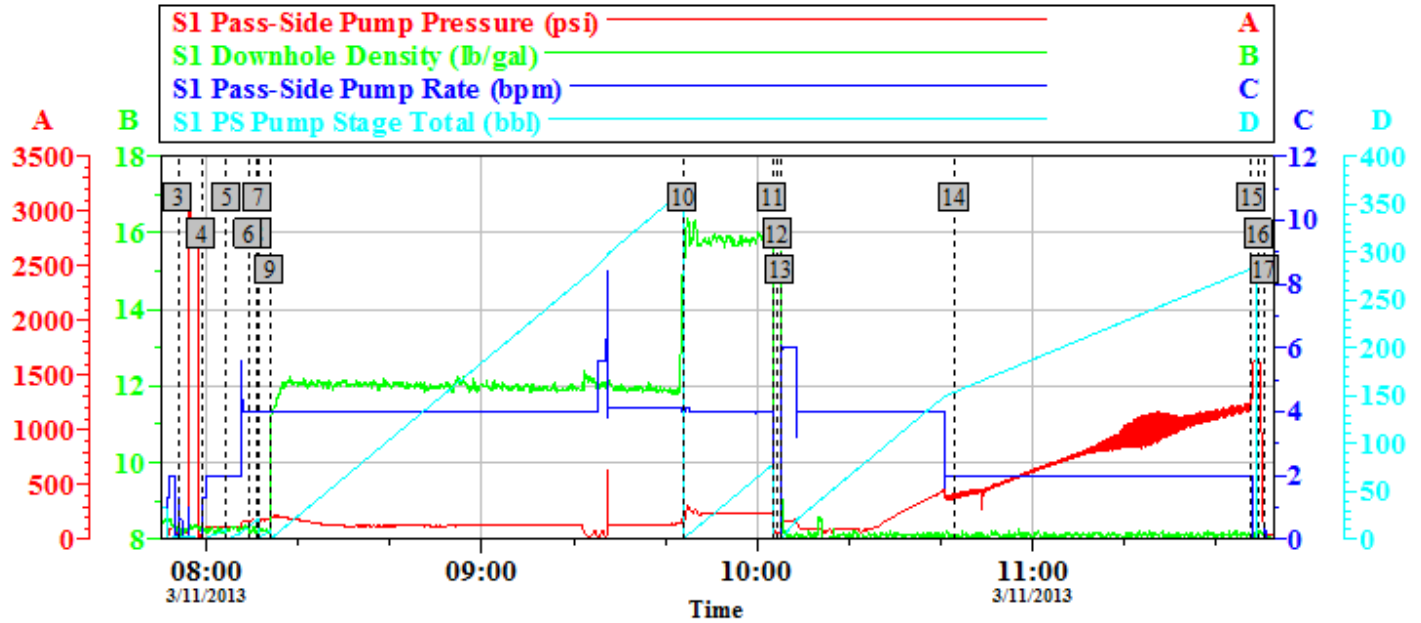
Activity Description	Date/Time	Cht #	Rate m3/min	Volume m3		Pressure MPa		Comments
				Stage	Total	Tubing	Casing	
Call Out	03/10/2013 22:30							
Depart Yard Safety Meeting	03/11/2013 00:25							SAFETY MEETING INVOLVING THE CMT CREW
Crew Leave Yard	03/11/2013 00:30							
Arrive At Loc	03/11/2013 03:30							1- F-450 11583928, 1- RED TIGER PUMP TRUCK 11324578, 2 - 660 BULK TRUCK TRAILERS 10025040, 10025041
Assessment Of Location Safety Meeting	03/11/2013 03:35							ASSESSMENT OF LOCATION INVOLVING THE CMT CREW
Pre-Rig Up Safety Meeting	03/11/2013 03:55							SAFETY MEETING INVOLVING THE ENTIRE CMT/ RIG CREW
Rig-Up Equipment	03/11/2013 04:00							
Pre-Job Safety Meeting	03/11/2013 05:00							SAFETY MEETING INVOLVING EVERYONE ON LOCATION
Start Job	03/11/2013 07:50							TP 3478.54 FT, FC 3434.64 FT, SJ 43.9 FT, 9 5/8 36 # K-55, 12 1/4 OH, CONDUCTOR SET @ 110 FT 14"
Test Lines	03/11/2013 07:54		1				2500.0	PRESSURE TEST GOOD TO 2500 PSI
Pump Spacer	03/11/2013 07:59		2		10		109.0	PUMP 10 BBLS H2O SPACER

Activity Description	Date/Time	Cht #	Rate m3/min	Volume m3		Pressure MPa		Comments
				Stage	Total	Tubing	Casing	
Pump Spacer 1	03/11/2013 08:04		4		20		175.0	PUMP 20 BBLS CHEMWASH SPACER
Pump Spacer 2	03/11/2013 08:09		4		10		177.0	PUMP 10 BBLS H2O SPACER
Pump Lead Cement	03/11/2013 08:14		4		318.1		123.0	940 SKS, 1.9 YLD, 9.68 GAL H2O/SK, 318.1 BBLS @ 12.4 #, 216.9 BBLS H2O REQ
Pump Tail Cement	03/11/2013 09:44		4		78.9		237.0	385 SKS, 1.15 YLD, 4.96 GAL H2O/SK, 78.9 BBLS @ 15.8 #, 45.5 BBLS H2O REQ
Shutdown	03/11/2013 10:03							SHUT DOWN TO DROP TOP PLUG
Drop Top Plug	03/11/2013 10:04							TATTLE TAIL INDICATED PLUG LEFT THE PLUG CONTAINER
Pump Displacement	03/11/2013 10:05		4		265.5		199.0	CALCULATED 265.5 BBLS DISPLACEMENT, ACTUALLY PUMPED 266 BBLS ON TANKS MARK TO MARK TO BUMP PLUG
Cement Returns to Surface	03/11/2013 10:43				110		400.0	CALCULATED SHOULD CIRCULATE 196.5 BBLS CEMENT RETURNS TO SURFACE, ACTUALLY CIRCULATED 110 BBLS BACK
Bump Plug	03/11/2013 11:47		2				1225.0	CALCULATED 957.3 PSI DIFFERENTIAL WHEN PLUG LANDS, PLUG BUMPED @ 1225 PSI
Check Floats	03/11/2013 11:49						1640.0	PRESSURED UP TO 1640 PSI, RELEASED PRESSURE FLOATS HELD, FLOWED BACK 2 BBLS
Pump Cement	03/12/2013 00:15		1.5		6		.0	MIXED AND PUMPED 29 SKS, 1.15 YLD, 5 GAL/SK, 6 BBLS @ 15.8 #, 3.5 BBLS MIX WATER
Shutdown	03/12/2013 00:30							SHUTDOWN GOOD CEMENT TO SURFACE

Activity Description	Date/Time	Cht #	Rate m3/ min	Volume m3		Pressure MPa		Comments
				Stage	Total	Tubing	Casing	
End Job	03/12/2013 00:35							GOOD CIRCULATION THROUGHOUT THE ENTIRE CMT JOB, NO PIPE MOVEMENT,
Pre-Rig Down Safety Meeting	03/12/2013 00:40							SAFETY MEETING INVOLVING THE CMT/RIG CREW
Rig-Down Equipment	03/12/2013 00:45							
Safety Meeting - Departing Location	03/12/2013 01:55							SAFETY MEETING INVOLVING THE CMT CREW
Depart Location for Service Center or Other Site	03/12/2013 02:00							THANK YOU FOR USING HALLIBURTON, BRANDON WOOD AND CREW

KINDER MORGAN

HOVENWEEP # B-6, SURFACE



Global Event Log

3 Test Lines	07:54:01	4 Pump Spacer 1	07:58:56	5 Pump Spacer 2	08:04:23
6 Start Job	08:09:18	7 Start Job	08:11:13	8 Pump Spacer 1	08:11:21
9 Pump Lead Cement	08:13:55	10 Pump Tail Cement	09:43:49	11 Shutdown	10:03:28
12 Drop Top Plug	10:04:30	13 Pump Displacement	10:05:06	14 Cement Returns to Surface	10:43:00
15 Bump Plug	11:47:41	16 Check Floats	11:49:21	17 End Job	11:50:38

Customer: KINDER MORGAN
Well Description: HOVENWEEP # B-6
Customer: CURTIS SLAUGH

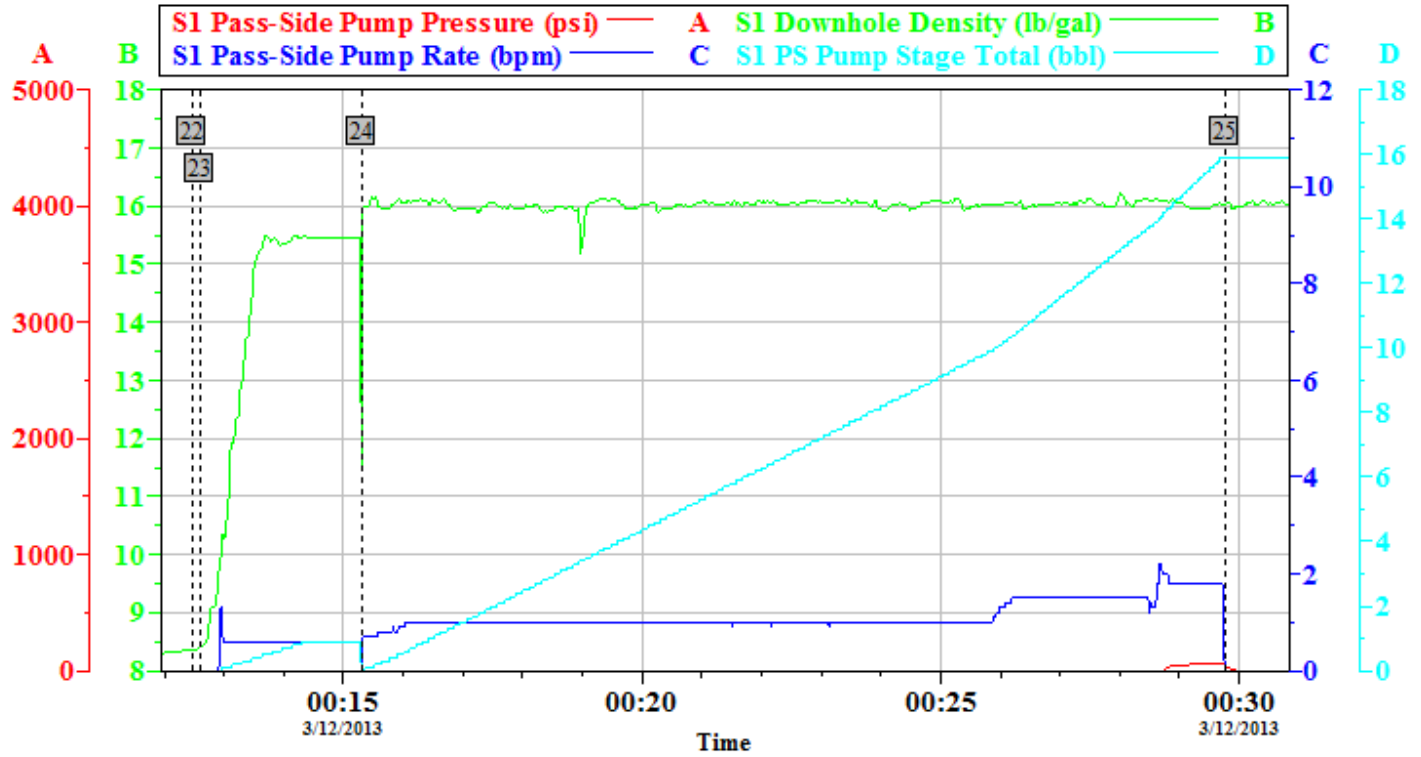
Job Date: 11-Mar-2013
JOB TYPE: SURFACE
Service Supervisor: BRANDON WOOD

Sales Order #: 900262817
ADC USED: YES
Operator, Pump: RICKEY JOHNSON, 11324578

OptiCem v6.4.10
11-Mar-13 12:33

KINDER MORGAN

HOVEN WEEP # B-6, TOP OUT



Global Event Log			
22	Start Job	00:12:28	23 Pump Cement 00:12:35
24	Start Job	00:15:18	25 Shutdown 00:29:46

Customer: KINDER MORGAN	Job Date: 11-Mar-2013	Sales Order #: 900262817
Well Description: HOVENWEEP # B-6	JOB TYPE: TOP OUT	ADC USED: NO
Customer: CURTIS SLAUGH	Service Supervisor: BRANDON WOOD	Operator, Pump: RICKEY JOHNSON, 11324578

OptiCem v6.4.10
12-Mar-13 01:07