



Scale: 9.60" / 100'
Measured Depth Log

Well Name Doe Canyon 12

Location SHL: 2389 FSL & 2569 FWL, SEC. 15, T40N, R18W NMPM

State CO

County Dolores

Country US

Rig Number Key-888

API Number 050330617301

Field Doe Canyon

Spud Date 02/03/2013

Ground Elevation 7165'

K.B. Elevation 7183'

Logged Interval 8805'

To 9636'

Total Depth 9636'

Formation Leadville

Type of Drilling Fluid Fresh water

Operator

Company KINDER MORGAN

Geologist

Name Anna Negrete / Dustin Cassady

Company Above Enterprise

Rock Types

? UNKNOWN

ANHYDRITE

GYPSUM

SALT

SIDERITE or LIMONITE

LIMESTONE

DOLOMITE

CHERT

COAL

MARLSTONE

CLAYSTONE

SHALE

SHALE GRAY

SHALE COLORED

SILTSTONE

SANDSTONE

CONGLOMERATE

BRECCIA

TILL

BENTONITE

TUFF

IGNEOUS

METAMORPHIC

Accessories

Fossils

- ALGAE
- AMPHIPORA
- BELEMNITE
- BIOCLASTIC
- BRACHIOPOD
- BRYOZOA
- CEPHALOPOD
- CORAL
- CRINOID
- ECHINOID
- FISH
- FORAMINIFERA

F FOSSIL

- GASTROPOD
- OOLITE
- OSTRACOD
- PELECYPOD
- PELLET
- PISOLITE
- PLANT REMAINS
- PLANT SPORES
- SCAPHOPOD
- STROMATOPOROID

Minerals

- ANHYDRITIC

ARGILLACEOUS

- ARGILLITE GRAIN
- BENTONITE
- BITUMENOUS SUBSTANCE
- BRECCIA FRAGMENTS
- CALCAREOUS
- CARBONACEOUS FLAKES
- CHTDK
- CHTLT
- COAL - THIN BEDS
- DOLOMITIC
- FELDSPAR
- FERRUGINOUS PELLET
- FERRUGINOUS

GLAUCONITE

- GYPSEFEROUS
- HEAVY MINERAL
- KAOLIN
- MARLSTONE
- MINERAL CRYSTALS
- NODULES
- PHOSPHATE PELLETS
- PYRITE
- SALT CAST
- SANDY
- SILICEOUS
- SILTY
- TUFFACEOUS

Stringer

- ANHYDRITE STRINGER
- BENTONITE STRINGER
- COAL STRINGER
- DOLOMITE STRINGER
- GYPSE STRINGER
- LIMESTONE STRINGER
- MARLSTONE (CALC) STRG
- MARLSTONE (DOL) STRG
- SANDSTONE STRINGER
- SHALE STRINGER
- SILTSTONE STRINGER

Other Symbols

Oil Show

- DEAD
- EVEN
- QUESTIONABLE
- SPOTTED STAINING

Porosity

- E EARTHY
- FENESTRAL
- FRACTURE
- INTERCRYSTALLINE
- INTEROOLITIC

MOLDIC

- ORGANIC
- PINPOINT
- VUGGY

Engineering

- BIT
- CONNECTION (LEFT)
- CONNECTION (RIGHT)
- CONNECTION GAS
- CORE - LOST
- CORE - RECOVERED
- DST INTERVAL

FAULT

- FORMATION TOP
- GAS SHOW
- MN DEPTH
- NORMAL FAULT
- OIL SHOW
- OVERTURNED STRATA
- REVERSE FAULT
- SIDEWALL CORE (LEFT)
- SIDEWALL CORE (RIGHT)
- SLIDE
- SURVEY
- TRIP GAS

WIRELINE TESTED - LEFT

- WIRELINE TESTED - RT

Rounding

- ANGULAR
- ROUNDED
- SUBANG
- SUBRND

Textures

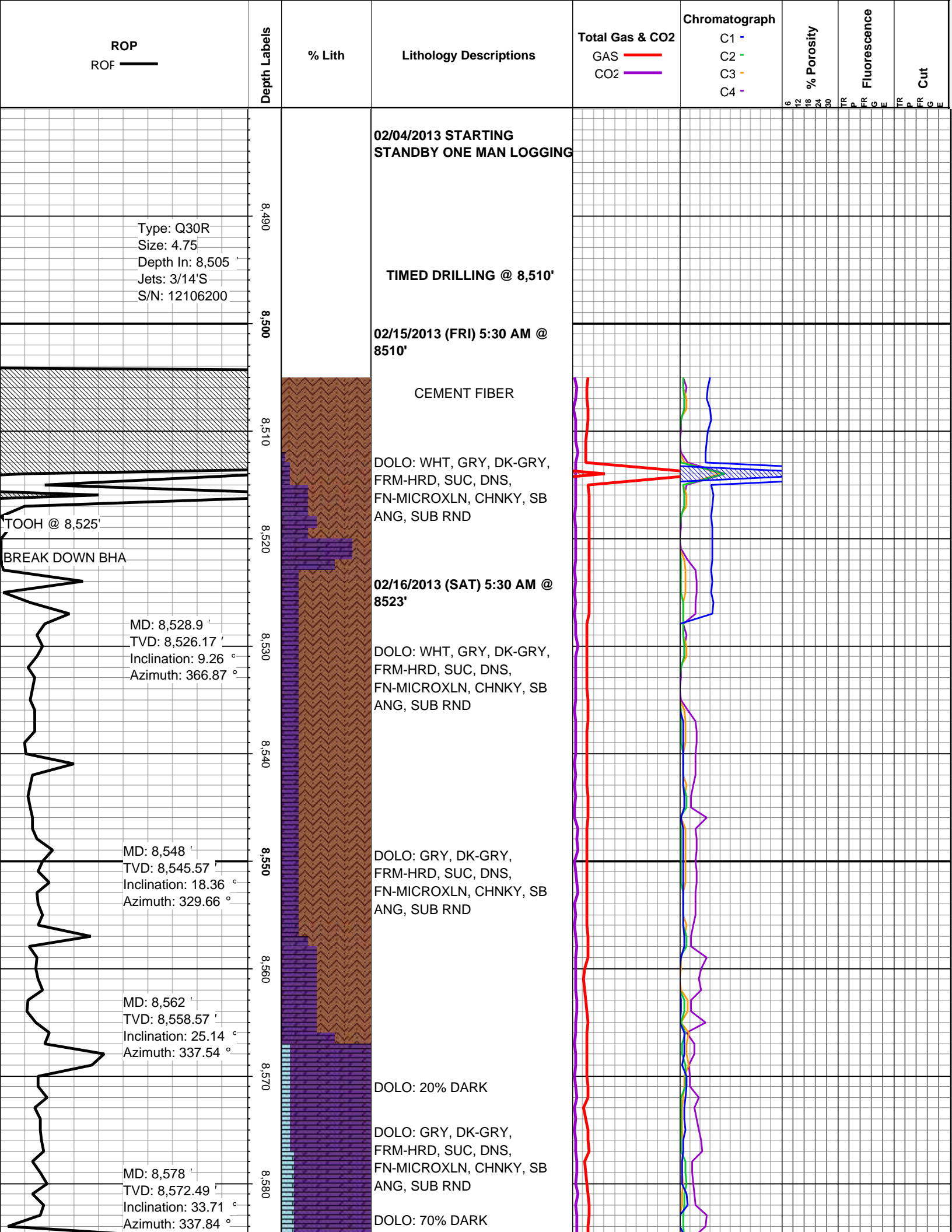
- BOUNDSTONE
- CHALKY
- CRYPTOXLN

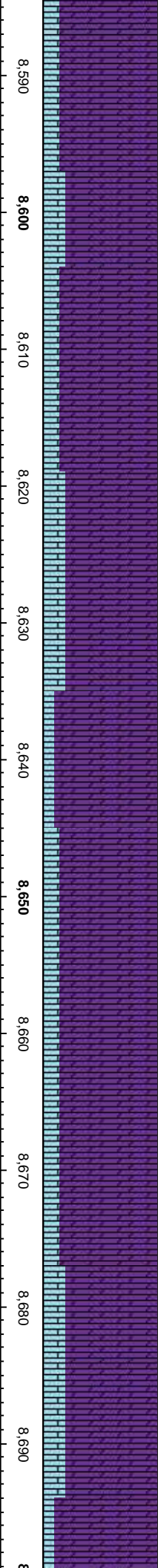
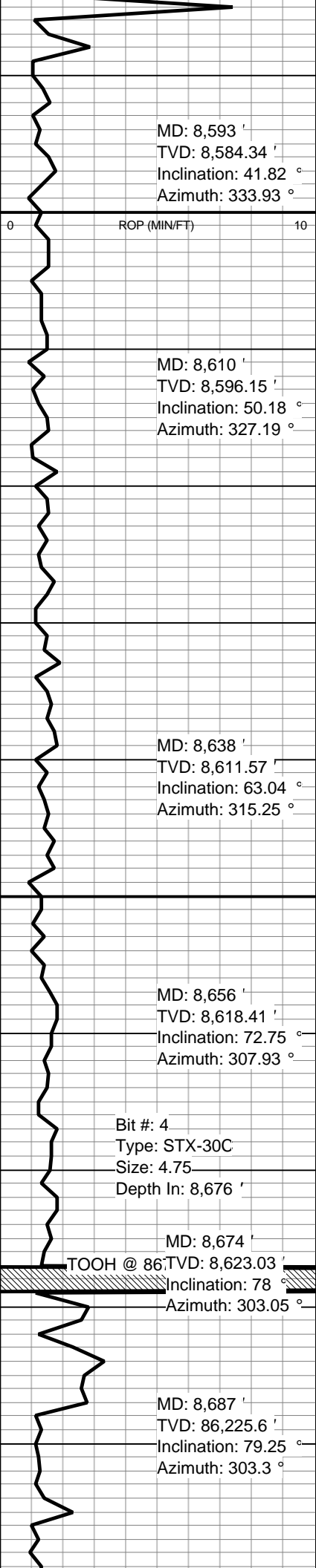
E EARTHY

- FINELYXLN
- GRAINSTONE
- L LITHOGRAPHIC
- MX MICROXLN
- MS MUDSTONE
- PS PACKSTONE
- WS WACKESTONE

Sorting

- MODERATE
- POOR
- WELL





DOLO: 30% DARK

DOLO: 5% DARK

DOLO: 5% DARK

DOLO: GRY, DK-GRY,
FRM-HRD, SUC, DNS,
FN-MICROXLN, CHNKY, SB
ANG, SUB RND

DOLO: 5% DARK

LS: GRY, WHT, OFF-WHT, CLR,
F-C, SUC, DNS-IP

DOLO: 1% DARK

DOLO: GRY, LT-DK GRY,
FRM-HRD, SUC, DNS,
FN-MICROXLN, CHNKY, SB
ANG, SUB RND

DOLO: 5% DARK

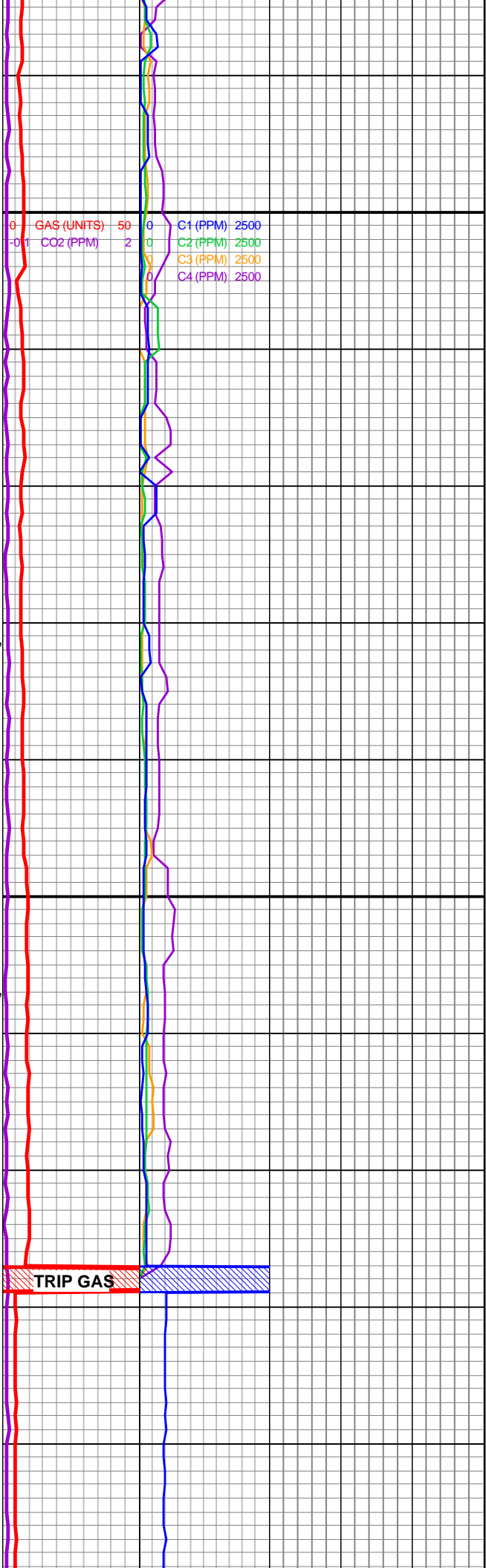
LS: GRY, WHT, OFF-WHT, CLR,
CRM, F-C, SUC, DNS-IP

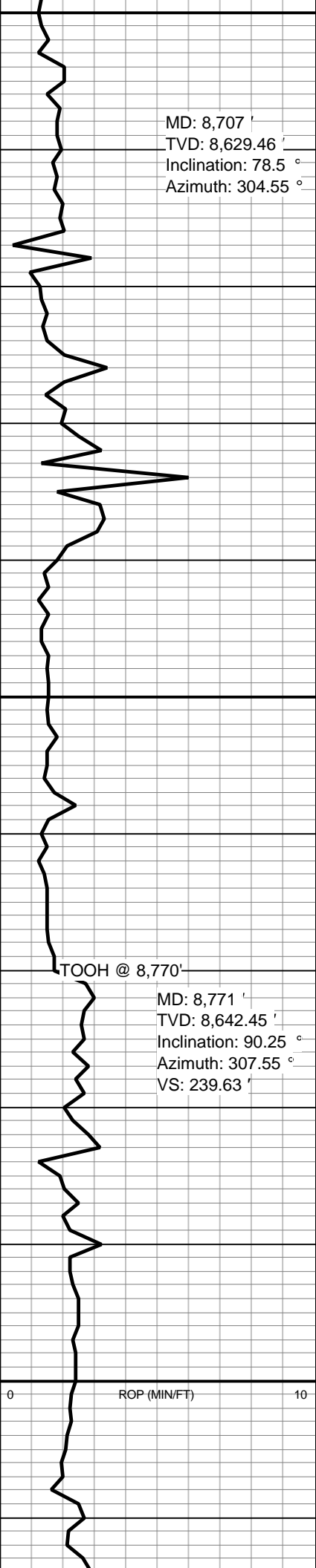
DOLO: GRY, DK-GRY,
FRM-HRD, SUC, DNS,
FN-MICROXLN, CHNKY, SB
ANG, SUB RND

**2/16/2013 (SUN) 5:00 AM
@ 8675.7'**

DOLO: 5% DARK

LS: GRY, LT GRY, WHT,
OFF-WHT, CLR, CRM, F-C,
SUC, DNS-IP





MD: 8,707 '
TVD: 8,629.46 '
Inclination: 78.5 °
Azimuth: 304.55 °

TOOH @ 8,770'

MD: 8,771 '
TVD: 8,642.45 '
Inclination: 90.25 °
Azimuth: 307.55 °
VS: 239.63 '



DOLO: 20% DARK

DOLO: GRY, LT-DK GRY,
FRM-HRD, SUC, DNS,
FN-MICROXLN, CHNKY, SB
ANG, SUB RND

LS: GRY, LT GRY, WHT,
OFF-WHT, CLR, CRM, TAN, F-C
SUC, DNS-IP

DOLO: 20% DARK

DOLO: GRY, DK-GRY,
FRM-HRD, SUC, DNS,
FN-MICROXLN, CHNKY, SB
ANG, SUB RND

DOLO: 10% DARK

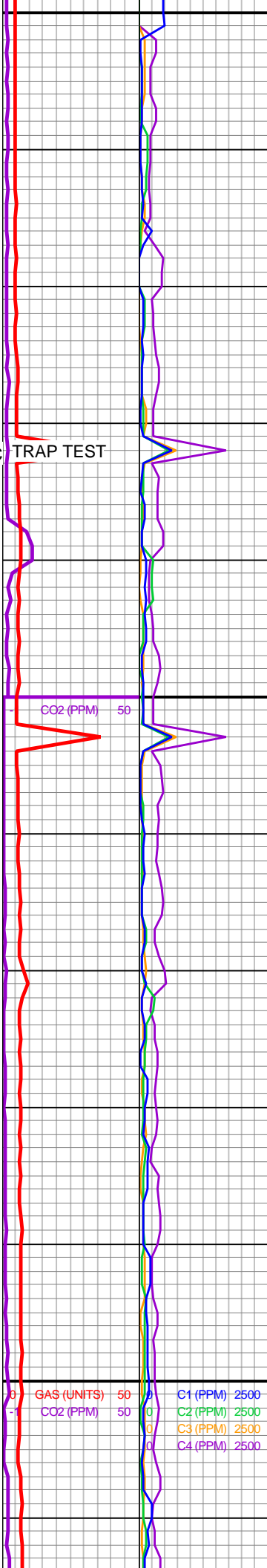
**2/18/2013 (MON) 5:00 AM
@ 8770.0'**

LS: LT GRY, WHT, OFF-WHT,
CLR, CRM, TAN, F-C, SUC,
DNS-IP

DOLO: GRY, LT-GRY,
FRM-HRD, SUC, DNS,
FN-MICROXLN, CHNKY, SB
ANG, SUB RND

DOLO: 5% DARK

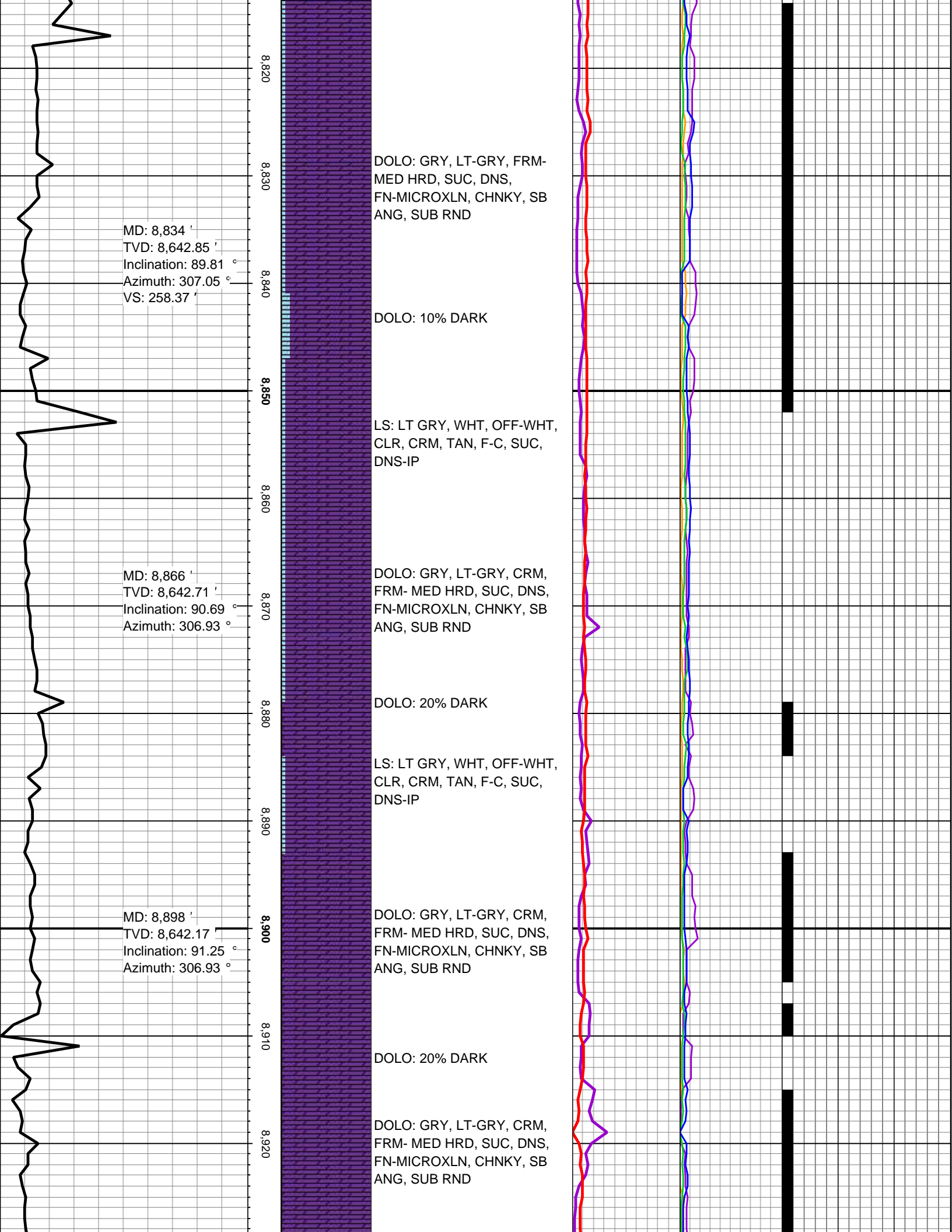
LS: LT GRY, WHT, OFF-WHT,
CLR, CRM, TAN, F-C, SUC,
DNS-IP

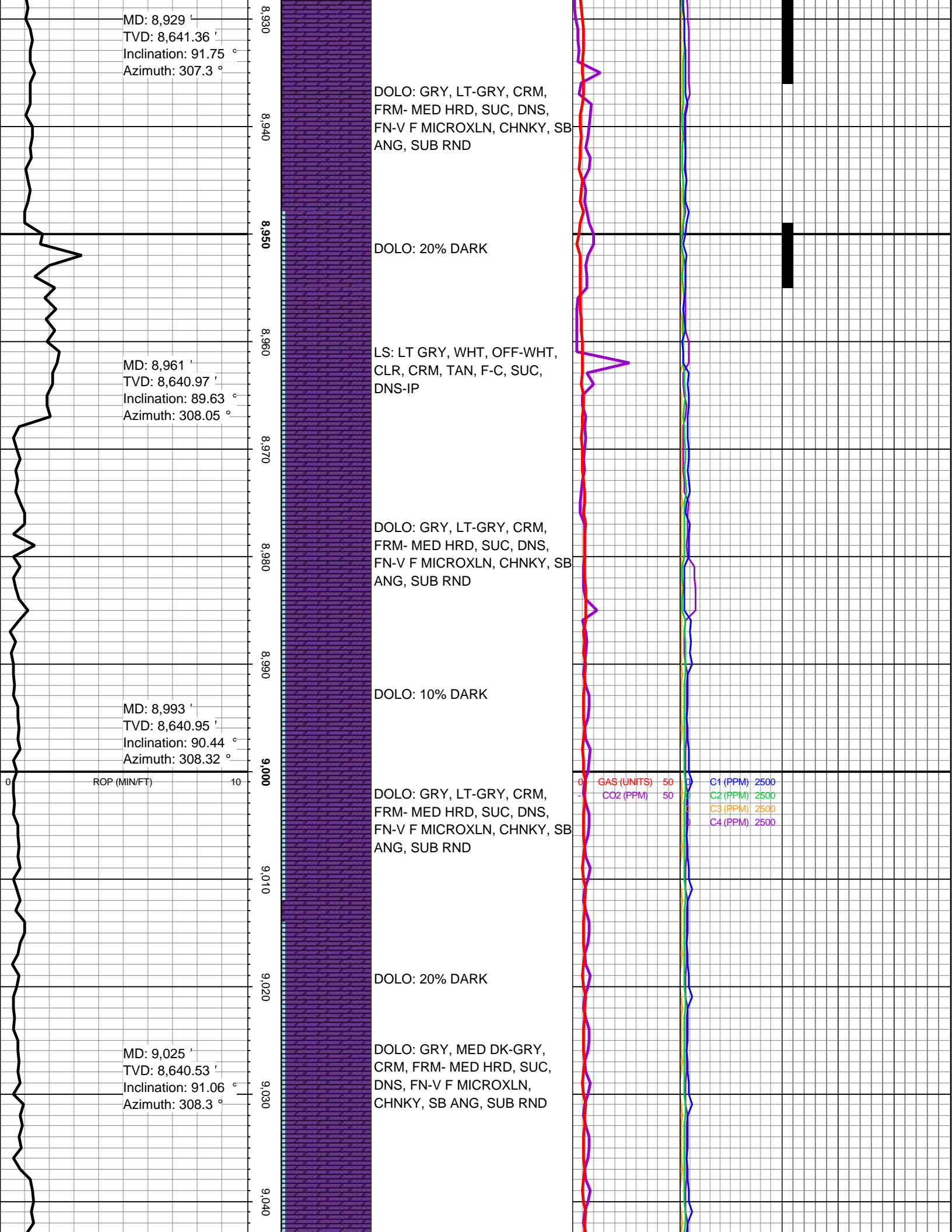


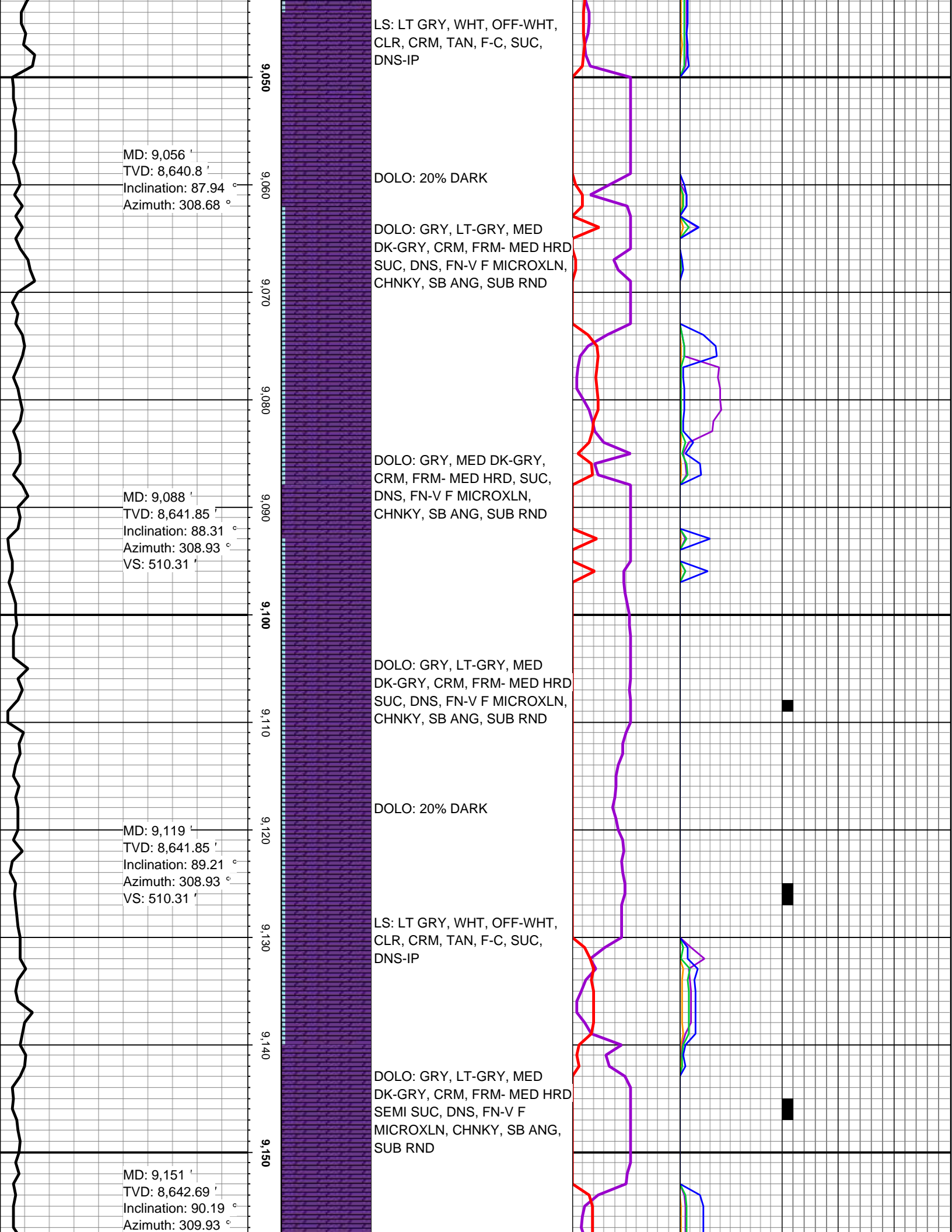
TRAP TEST

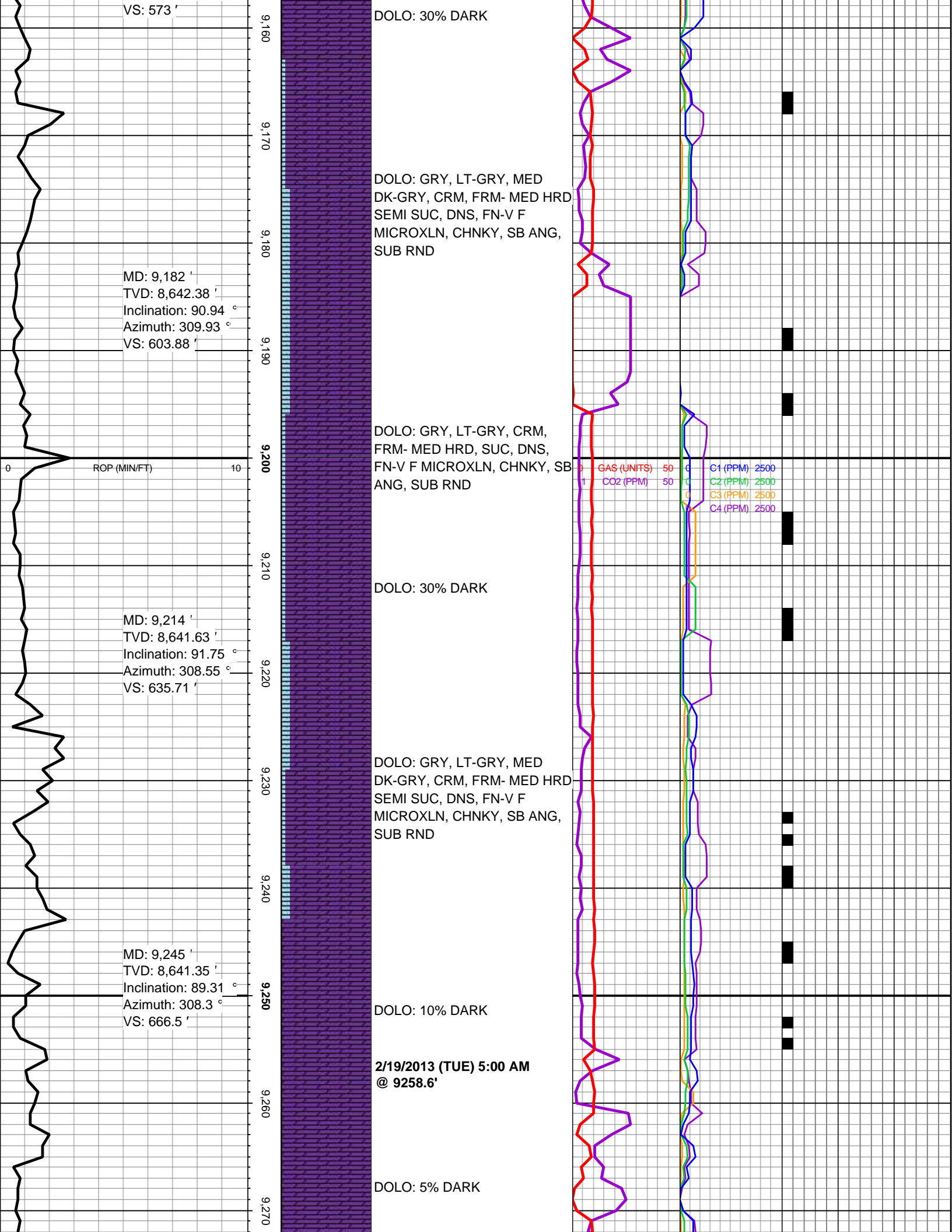
CO2 (PPM) 50

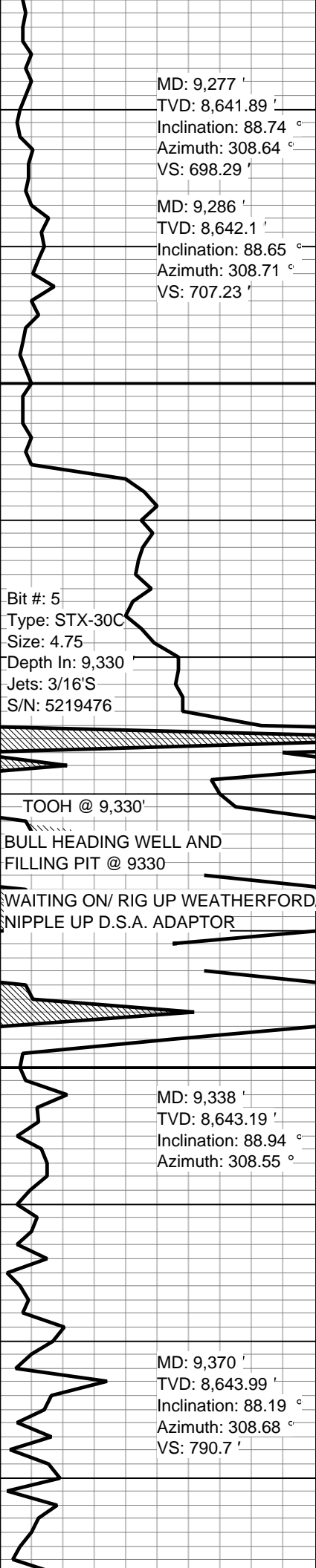
GAS (UNITS) 50
CO2 (PPM) 50
C1 (PPM) 2500
C2 (PPM) 2500
C3 (PPM) 2500
C4 (PPM) 2500











9,280
9,290
9,300
9,310
9,320
9,330
9,340
9,350
9,360
9,370
9,380



DOLO: GRY, LT-GRY, MED
DK-GRY, CRM, FRM- MED HRD
SEMI SUC, DNS, FN-V F
MICROXLN, CHNKY, SB ANG,
SUB RND

DOLO: 5% DARK

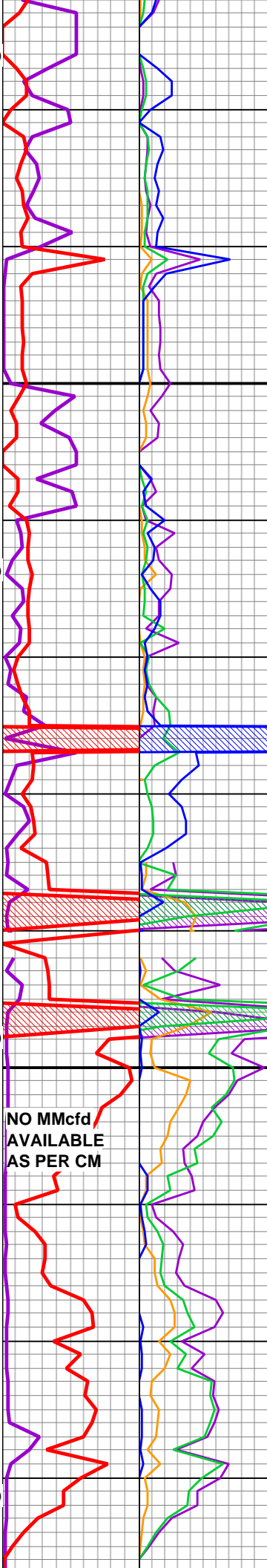
DOLO: GRY, LT-GRY, MED
DK-GRY, CRM, FRM- MED HRD
SEMI SUC, DNS, FN-V F
MICROXLN, CHNKY, SB ANG,
SUB RND

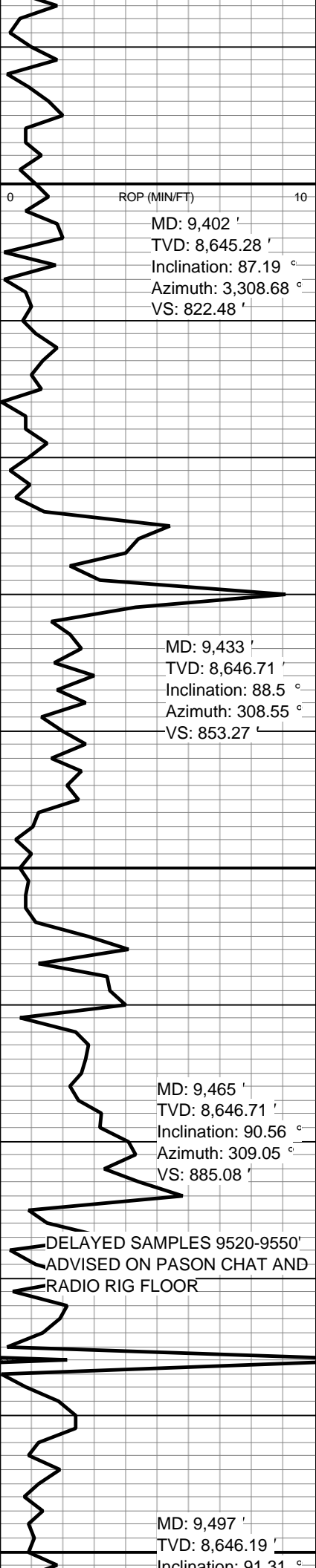
**2/20-23/2013 (WED-SAT)
5:00 AM @ 9330'**

DOLO: GRY, LT-GRY, MED
DK-GRY, CRM, FRM- MED HRD
SEMI SUC, DNS, FN-V F
MICROXLN, CHNKY, SB ANG,
SUB RND

DOLO: 5% DARK

DOLO: GRY, LT-GRY, MED
DK-GRY, CRM, FRM- MED HRD
SEMI SUC, DNS, FN-V F
MICROXLN, CHNKY, SB ANG,
SUB RND





9,390
9,400
9,410
9,420
9,430
9,440
9,450
9,460
9,470
9,480
9,490
9,500

DOLO: 5% DARK

DOLO: GRY, LT-GRY, MED
DK-GRY, CRM, FRM- MED HRD
SEMI SUC, DNS, FN-V F
MICROXLN, CHNKY, SB ANG,
SUB RND

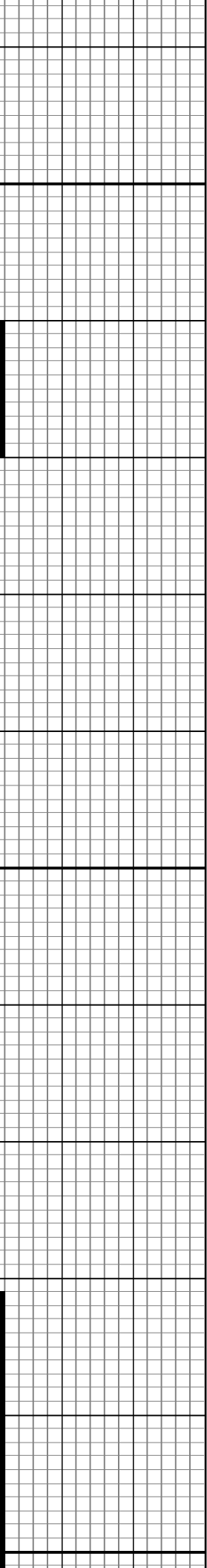
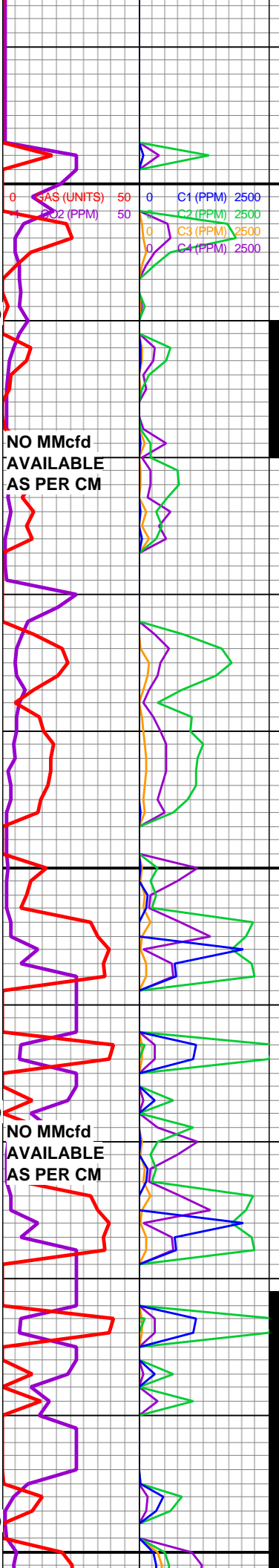
DOLO: 5% DARK

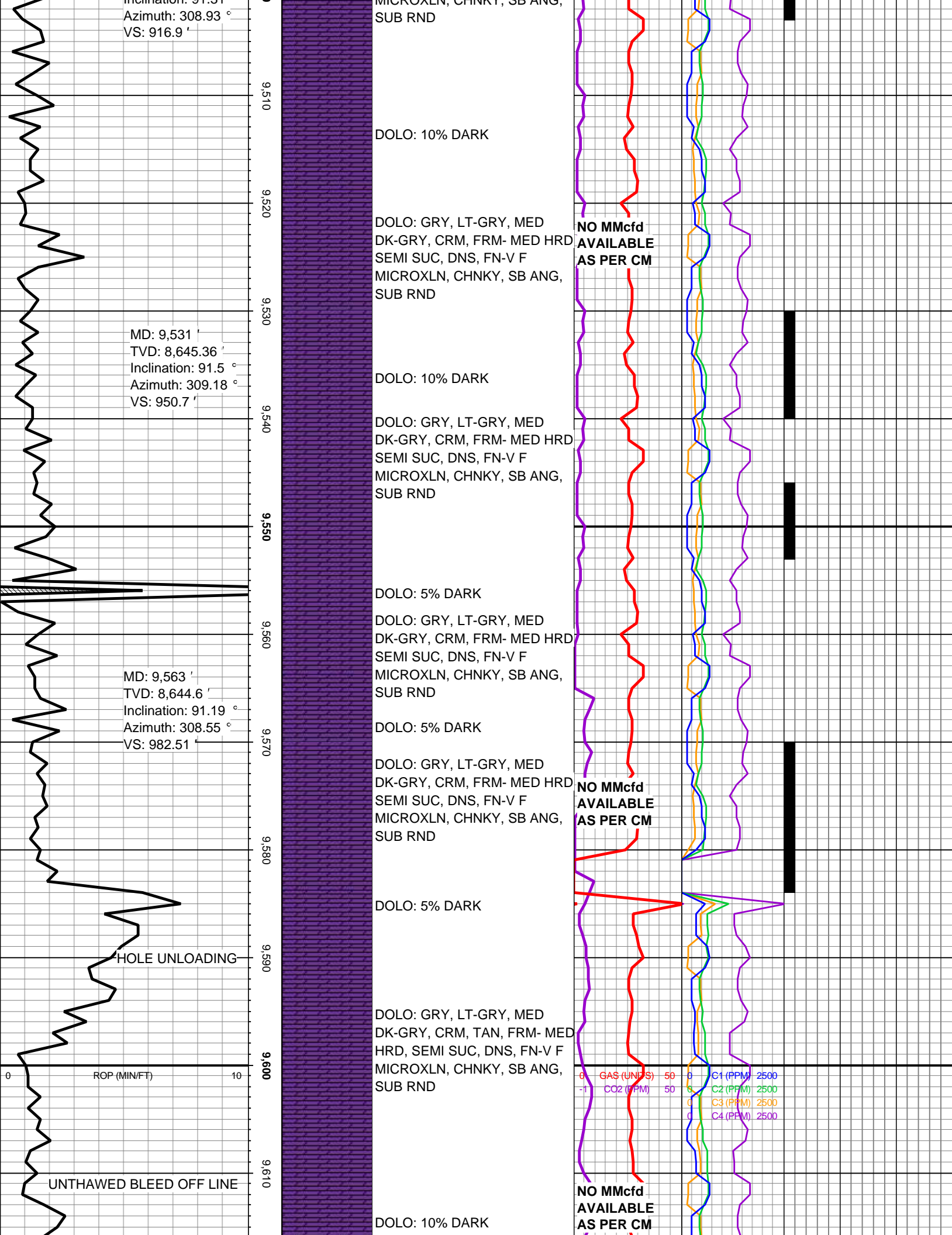
DOLO: 10% DARK

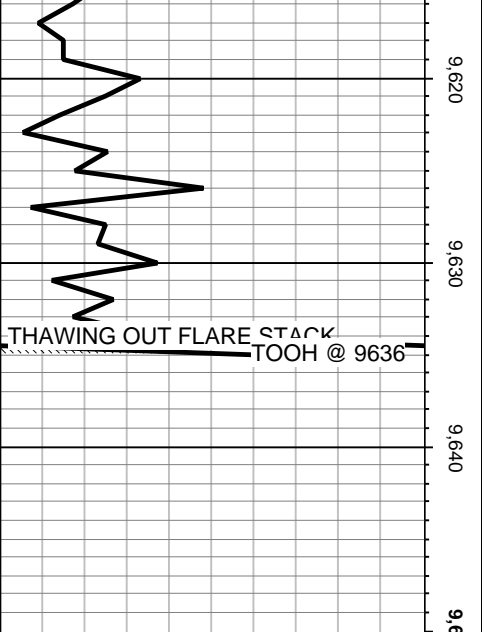
DOLO: GRY, LT-GRY, MED
DK-GRY, CRM, FRM- MED HRD
SEMI SUC, DNS, FN-V F
MICROXLN, CHNKY, SB ANG,
SUB RND

DOLO: 10% DARK

DOLO: GRY, LT-GRY, MED
DK-GRY, CRM, FRM- MED HRD
SEMI SUC, DNS, FN-V F
MICROXLN, CHNKY, SB ANG







2/24/2013 (SUN)
5:00 AM @ 9636'

TD-02/24/2013 (SUN) 4:00 PM
@ 9636.0'

