



Weatherford®

Compact Micro-Imager Interpretation Results

COMPANY: KINDER MORGAN CO2 Co. L.P

WELL: DOE CANYON #12

FIELD: MCELMO DOME

COUNTY: DOLORES

STATE: COLORADO

Location: 1366' FNL & 2042' FWL
SEC 10 TWP 40N RGE 18W 37.75127

Latitude: 37.75127

API: 06-033-06173

Longitude: -108.83621

License: -108.83621

Permanent Datum: G.L. Elevation: 7165.00 ft

Other Services: COMPEN DENSITY
COMPEN NEUTRON
DUAL LATEROLOG
MICRO RESISTIVITY
SPECTRAL GAMMA RAY

Log measured from K.B. 0.00 ft above Permanent Datum

Elevations: K.B.: 7188.00 ft
D.F.: 7188.00 ft
G.L.: 7165.00 ft

Drilling measured from K.B.

Date: 10-FEB-2013

Run Number: ONE

Service Order: 3524950

Depth Driller: 8660.00 ft

Depth Logger: 8643.00 ft

First Reading: 8631.00 ft

Last Reading: 8503.00 ft

Casing Driller: @ 8500.00 ft

Casing Logger: 8490.00 ft

Bit Size: 6.000 in

Hole Fluid Type: H2O

Density: 8.40 g/cc

pH: 9.00

Sample Source: PIT

Rm @ Measured Temperature: 0.55 ohm-in @ 76.0 deg F

Rmt @ Measured Temperature: 0.44 ohm-in @ 76.0 deg F

Rmc @ Measured Temperature: 0.65 ohm-in @ 76.0 deg F

Source Rmf: CALC

Time Slice Circulation: 6 HOURS

Maximum Recorded Temperature: 170.00 deg F @

Equipment No.: 13173

Recorded By: D. COLE

Witnessed By: T. BITTINGER

All interpretation of log data are opinions based on inferences from electrical or other measurements. We do not guarantee the accuracy or correctness of any interpretation or recommendation and we shall not be liable or responsible for any loss, cost, damages or expenses incurred or sustained by anyone resulting from any interpretation or recommendation made by any of our employees or agents.

Rig:	Remarks:	Service Order #	3524950
Drilling Stopped	CMI DATA DEPTH CORRECTED TO OPEN HOLE GAMMA RAY		
Circulation Stopped 6 HOURS	BOREHOLE SIZE, RUGOSITY AND TIGHTPULLS AFFECTED IMAGE QUALITY		
Tool on Bottom			
BHT 170.0 deg F			

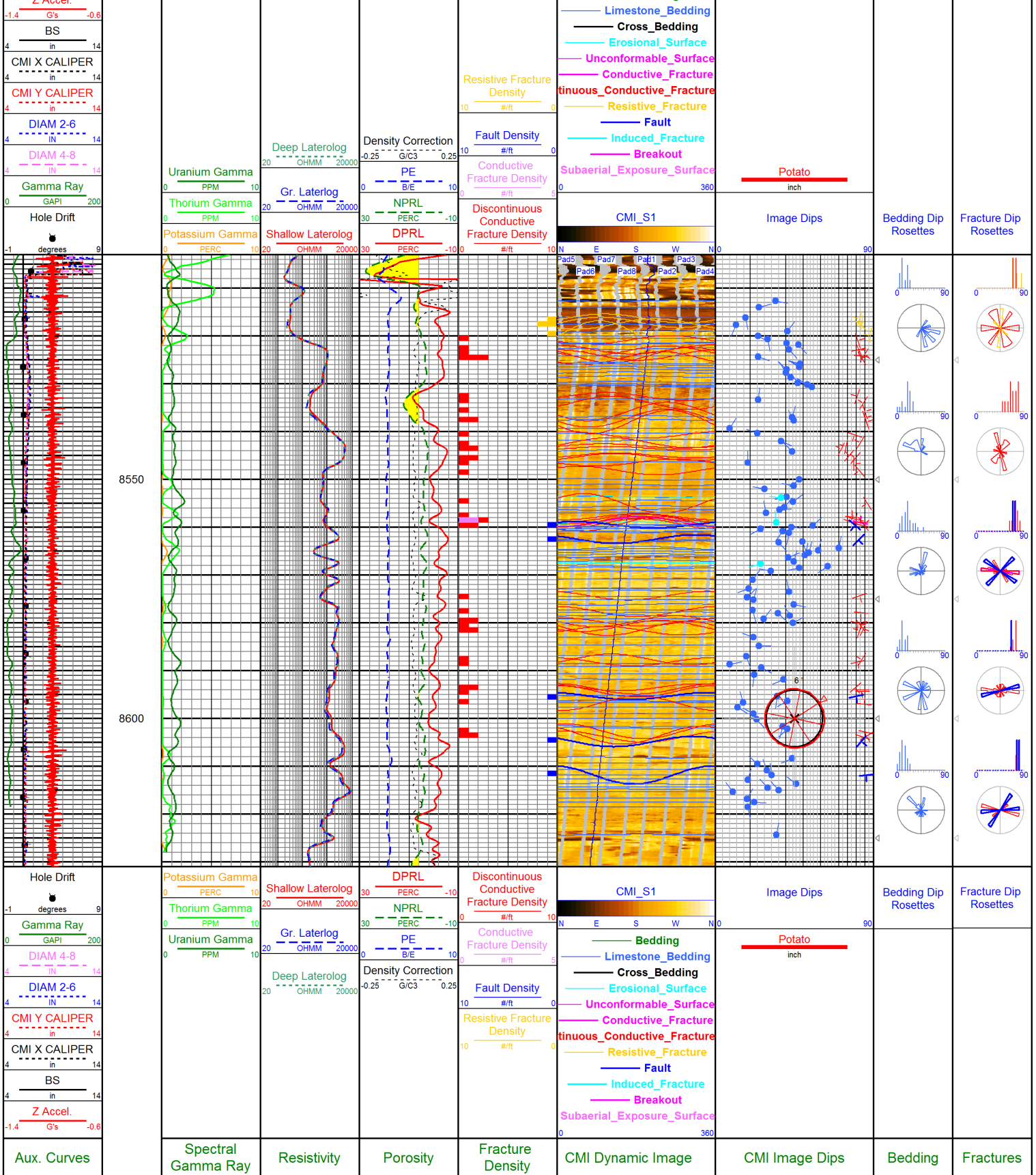
Equipment Data

Tool Type	Tool Type	Other
MIM 207 MIE 102		PROCESSED BY C. CAPPS Geologist: Ron Kenny

CORRELATION PARAMETERS

All Dips Interactively Edited From Image
Magnetic Declination : 10.28 degrees

Aux. Curves	Spectral Gamma Ray	Resistivity	Porosity	Fracture Density	CMI Dynamic Image	CMI Image Dips	Bedding	Fractures
7 Aspel					Bedding			



COMPANY: KINDER MORGAN CO2 Co. L.P
 WELL: DOE CANYON #12
 FIELD: McELMO DOME
 COUNTY: DOLORES
 STATE: COLORADO



Weatherford[®]

Compact Micro-Imager
Interpretation Results

