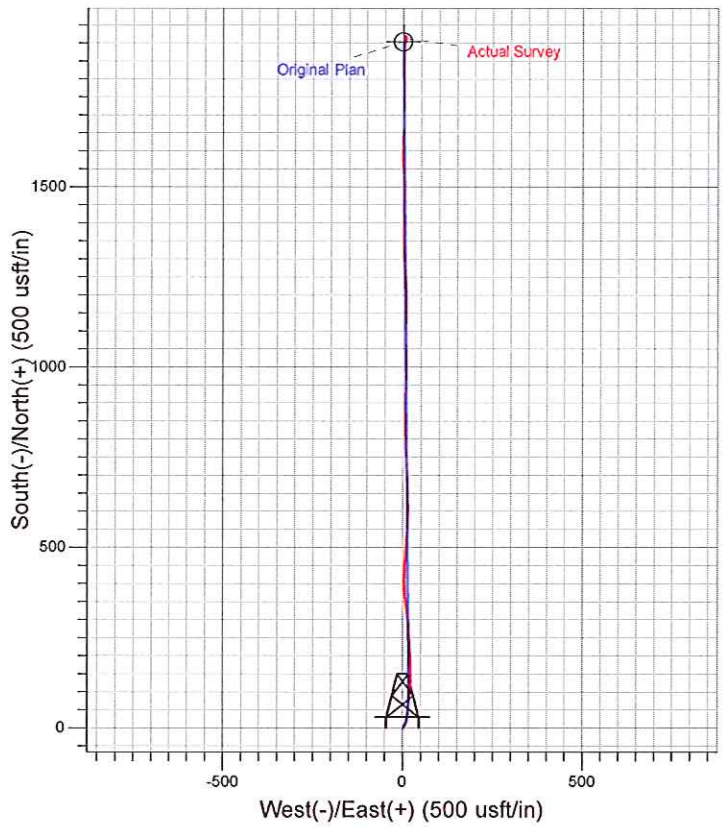
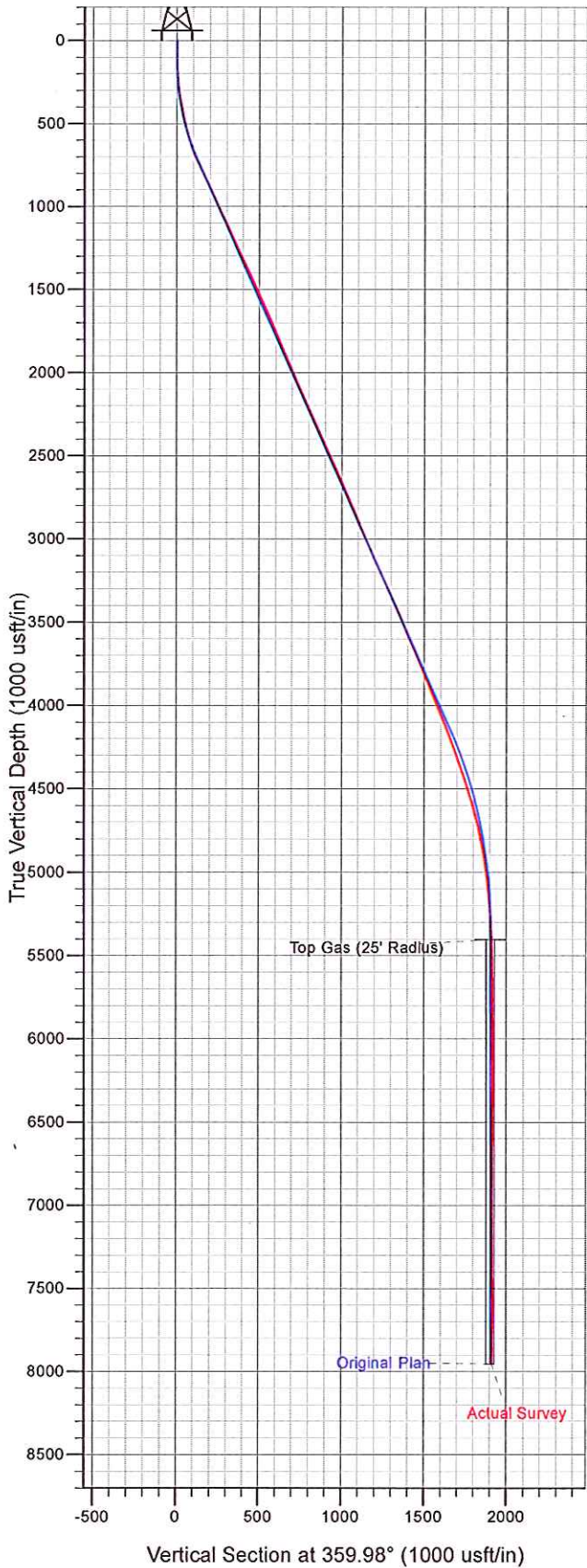




Well Name: RWF 513-29
 Surface Location: RWF 14-29 Pad
 North American Datum 1983 , US State Plane 1983 . Colorado Central Zone
 Ground Elevation: 5419.00
 +N/-S +E/-W Northing Easting Latitude Longitude Slot
 0.00 0.00 1612522.70 2317473.60 39.49021 -107.91867 B1
 KELLY BUSHING @ 5445.00usft (SSD 573 (26' RKB) jjb)



T

M

Azimuths to True North
 Magnetic North: 10.09°

Magnetic Field
 Strength: 52084.1snT
 Dip Angle: 65.70°
 Date: 3/18/2013
 Model: IGRF2010