

The Road to Excellence Starts with Safety

Sold To #: 300721		Ship To #: 2983754		Quote #:		Sales Order #: 900300630							
Customer: WPX ENERGY ROCKY MOUNTAIN LLC-EBUS				Customer Rep: Towers, Ron									
Well Name: RWF			Well #: 513-29			API/UWI #: 05-045-21662							
Field: RULISON		City (SAP): RIFLE		County/Parish: Garfield		State: Colorado							
Lat: N 39.49 deg. OR N 39 deg. 29 min. 24.742 secs.				Long: W 107.919 deg. OR W -108 deg. 4 min. 52.774 secs.									
Contractor: Nabors			Rig/Platform Name/Num: Nabors 573 Nabors 573										
Job Purpose: Cement Surface Casing													
Well Type: Development Well				Job Type: Cement Surface Casing									
Sales Person: MAYO, MARK				Srcv Supervisor: ARNOLD, EDWARD			MBU ID Emp #: 439784						
<b>Job Personnel</b>													
HES Emp Name		Exp Hrs	Emp #	HES Emp Name		Exp Hrs	Emp #	HES Emp Name		Exp Hrs	Emp #		
ARNOLD, EDWARD John		9	439784	SALAZAR, PAUL Omar		9	445614	SINCLAIR, DAN J		9	338784		
<b>Equipment</b>													
HES Unit #	Distance-1 way	HES Unit #	Distance-1 way	HES Unit #	Distance-1 way	HES Unit #	Distance-1 way						
	60 mile	10565341	60 mile	10973571	60 mile	11259882	60 mile						
11808849	60 mile												
<b>Job Hours</b>													
Date	On Location Hours	Operating Hours	Date	On Location Hours	Operating Hours	Date	On Location Hours	Operating Hours					
3-20-2013	7	1.5	3-21-2013	2	2								
TOTAL										Total is the sum of each column separately			
<b>Job</b>					<b>Job Times</b>								
Formation Name					Date		Time		Time Zone				
Formation Depth (MD) Top		Bottom		Called Out		20 - Mar - 2013		12:15		MST			
Form Type		BHST		On Location		20 - Mar - 2013		17:00		MST			
Job depth MD		1190. ft		Job Depth TVD		1190. ft		Job Started		20 - Mar - 2013	23:43	MST	
Water Depth		Wk Ht Above Floor		3. ft		Job Completed		21 - Mar - 2013		00:39		MST	
Perforation Depth (MD) From		To		Departed Loc		21 - Mar - 2013		02:00		MST			
<b>Well Data</b>													
Description	New / Used	Max pressure psig	Size in	ID in	Weight lbm/ft	Thread	Grade	Top MD ft	Bottom MD ft	Top TVD ft	Bottom TVD ft		
<b>Tools and Accessories</b>													
Type	Size	Qty	Make	Depth	Type	Size	Qty	Make	Depth	Type	Size	Qty	Make
Guide Shoe					Packer					Top Plug	9 5/8	1	HES
Float Shoe					Bridge Plug					Bottom Plug			
Float Collar					Retainer					SSR plug set			
Insert Float										Plug Container	9 5/8	1	HES
Stage Tool										Centralizers			
<b>Miscellaneous Materials</b>													
Gelling Agt		Conc		Surfactant		Conc		Acid Type		Qty		Conc	%
Treatment Fld		Conc		Inhibitor		Conc		Sand Type		Size		Qty	
<b>Fluid Data</b>													
<b>Stage/Plug #: 1</b>													
Fluid #	Stage Type	Fluid Name			Qty	Qty uom	Mixing Density lbm/gal	Yield ft3/sk	Mix Fluid Gal/sk	Rate bbl/min	Total Mix Fluid Gal/sk		
<b>Stage/Plug #: 1</b>													
Fluid #	Stage Type	Fluid Name			Qty	Qty uom	Mixing Density uom	Yield uom	Mix Fluid uom	Rate uom	Total Mix Fluid uom		

Stage/Plug #: 1									
Fluid #	Stage Type	Fluid Name	Qty	Qty uom	Mixing Density lbm/gal	Yield ft <sup>3</sup> /sk	Mix Fluid Gal/sk	Rate bbl/min	Total Mix Fluid Gal/sk
1	Fresh Water Spacer		20.00	bbl	.	.0	.0	4	
2	VersaCem Lead Cement	VERSACEM (TM) SYSTEM (452010)	160.0	sacks	12.3	2.38	13.75	7	13.75
	13.75 Gal	FRESH WATER							
3	VersaCem Tail Cement	VERSACEM (TM) SYSTEM (452010)	160.0	sacks	12.8	2.11	11.75	7	11.75
	11.75 Gal	FRESH WATER							
4	Fresh Water Displacement		89.00	bbl	.	.0	.0	10	
Calculated Values		Pressures		Volumes					
Displacement	89	Shut In: Instant		Lost Returns		Cement Slurry	127.9	Pad	
Top Of Cement	SURFACE	5 Min		Cement Returns	40	Actual Displacement	89	Treatment	
Frac Gradient		15 Min		Spacers	20	Load and Breakdown		Total Job	236.9
Rates									
Circulating	RIG	Mixing	7	Displacement	10	Avg. Job	8		
Cement Left In Pipe	Amount	49 ft	Reason	Shoe Joint					
Frac Ring # 1 @	ID	Frac ring # 2 @	ID	Frac Ring # 3 @	ID	Frac Ring # 4 @	ID		
The Information Stated Herein Is Correct				Customer Representative Signature					

*The Road to Excellence Starts with Safety*

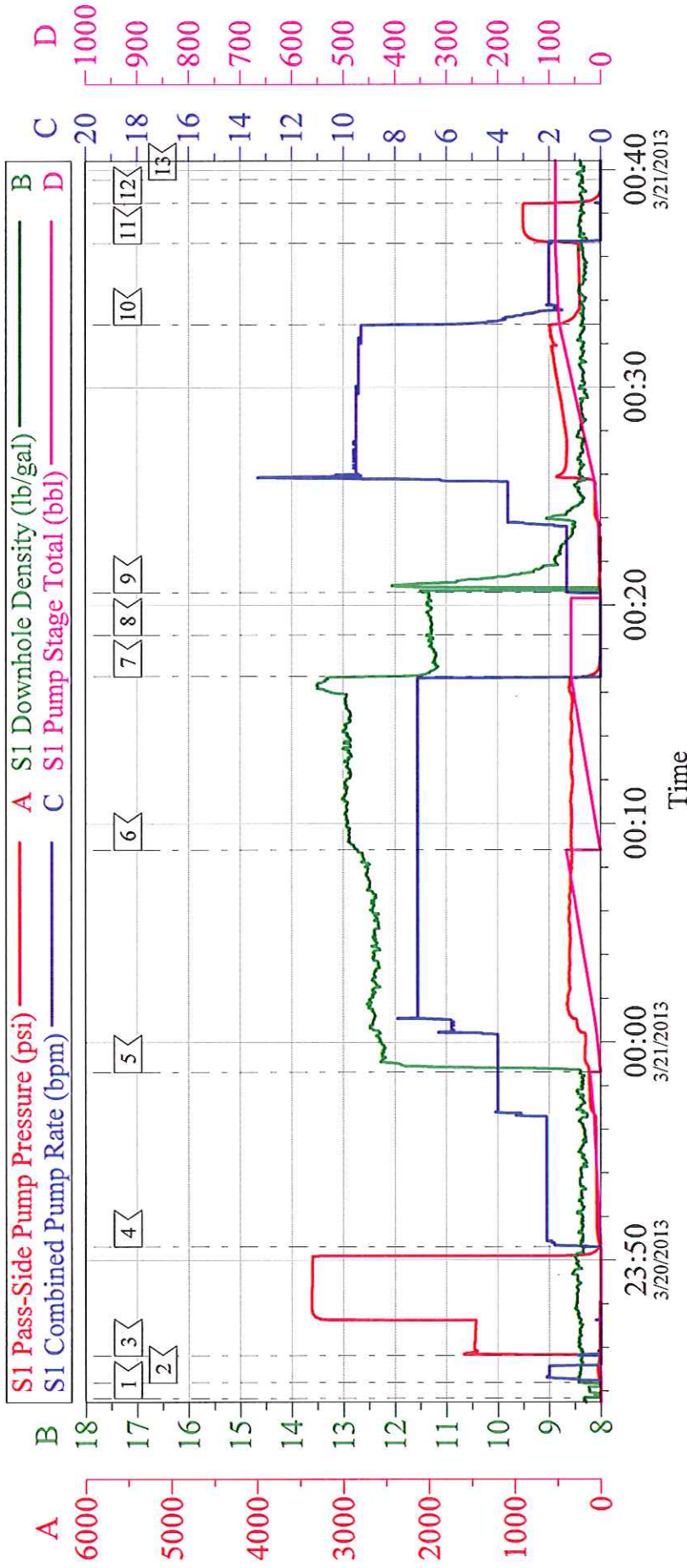
Sold To #: 300721	Ship To #: 2983754	Quote #:	Sales Order #: 900300630
Customer: WPX ENERGY ROCKY MOUNTAIN LLC-EBUS		Customer Rep: Towers, Ron	
Well Name: RWF	Well #: 513-29	API/UWI #: 05-045-21662	
Field: RULISON	City (SAP): RIFLE	County/Parish: Garfield	State: Colorado
<b>Legal Description:</b>			
Lat: N 39.49 deg. OR N 39 deg. 29 min. 24.742 secs.		Long: W 107.919 deg. OR W -108 deg. 4 min. 52.774 secs.	
Contractor: Nabors		Rig/Platform Name/Num: Nabors 573 Nabors 573	
Job Purpose: Cement Surface Casing			Ticket Amount:
Well Type: Development Well		Job Type: Cement Surface Casing	
Sales Person: MAYO, MARK		Srvc Supervisor: ARNOLD, EDWARD	MBU ID Emp #: 439784

Activity Description	Date/Time	Cht #	Rate bbl/min	Volume bbl		Pressure psig		Comments
				Stage	Total	Tubing	Casing	
Call Out	03/20/2013 12:15							Crew called out.
Pre-Convoy Safety Meeting	03/20/2013 14:45							Including entire cement crew, discuss hazards, route, and safety.
Crew Leave Yard	03/20/2013 15:00							Leave yard for location.
Arrive At Loc	03/20/2013 17:00							
Assessment Of Location Safety Meeting	03/20/2013 17:15							Including entire cement crew, discussed hazards, and rig up.
Pre-Rig Up Safety Meeting	03/20/2013 22:15							
Rig-Up Equipment	03/20/2013 22:30							1 Elite # 9; 1 660 Bulk Truck; 1 hard line to rig floor; 2 lines to upright; 1 9 5/8" compact head.
Rig-Up Completed	03/20/2013 23:15							
Pre-Job Safety Meeting	03/20/2013 23:30							Including everyone on location. Discussed hazards, emergency situations, and job procedure.
Start Job	03/20/2013 23:43							TD 1190; TP 1180; SJ 49; OH 13 1/2; CASING 9 5/8 32.3# H-40; MUD 10.9 PPG.
Pump Water	03/20/2013 23:44		2	2			33.0	Fresh water ahead to fill lines.
Test Lines	03/20/2013 23:45						3366.0	Test line to psi, Found no leaks, good test.
Pump Spacer 1	03/20/2013 23:50		4	20			134.0	20 BBL's fresh water.

Activity Description	Date/Time	Cht #	Rate bbl/min	Volume bbl		Pressure psig		Comments
				Stage	Total	Tubing	Casing	
Pump Lead Cement	03/20/2013 23:58		7	67.8			340.0	160 sks Lead cement, 12.3 ppg, 2.38 cf3, 13.75 gal/sk.
Pump Tail Cement	03/21/2013 00:08		7	60.1			332.0	160 sks Tail cement, 12.8 ppg, 2.11cf3, 11.75 gal/sk.
Shutdown	03/21/2013 00:16							
Drop Plug	03/21/2013 00:18							Plug left Container.
Pump Displacement	03/21/2013 00:20		10	79			595.0	Fresh water displacement.
Slow Rate	03/21/2013 00:32		2	10			250.0	Slow rate last 10 BBL's of displacement prior to bumping the plug.
Bump Plug	03/21/2013 00:36				89		900.0	Plug landed.
Check Floats	03/21/2013 00:38							Floats Held. 3/4 BBL's back. 40 BBL's of good cement to surface.
End Job	03/21/2013 00:39							
Pre-Rig Down Safety Meeting	03/21/2013 00:45							Including entire cement crew, discussed hazards and safety.
Rig-Down Equipment	03/21/2013 00:50							
Pre-Convoy Safety Meeting	03/21/2013 01:45							Including entire cement crew, discussed hazards, route, and safety.
Crew Leave Location	03/21/2013 02:00							
Other	03/21/2013 02:00							Thank You for using Halliburton, Ed Arnold and Crew.

# WPX - RWF 513-29

## 9 5/8" SURFACE



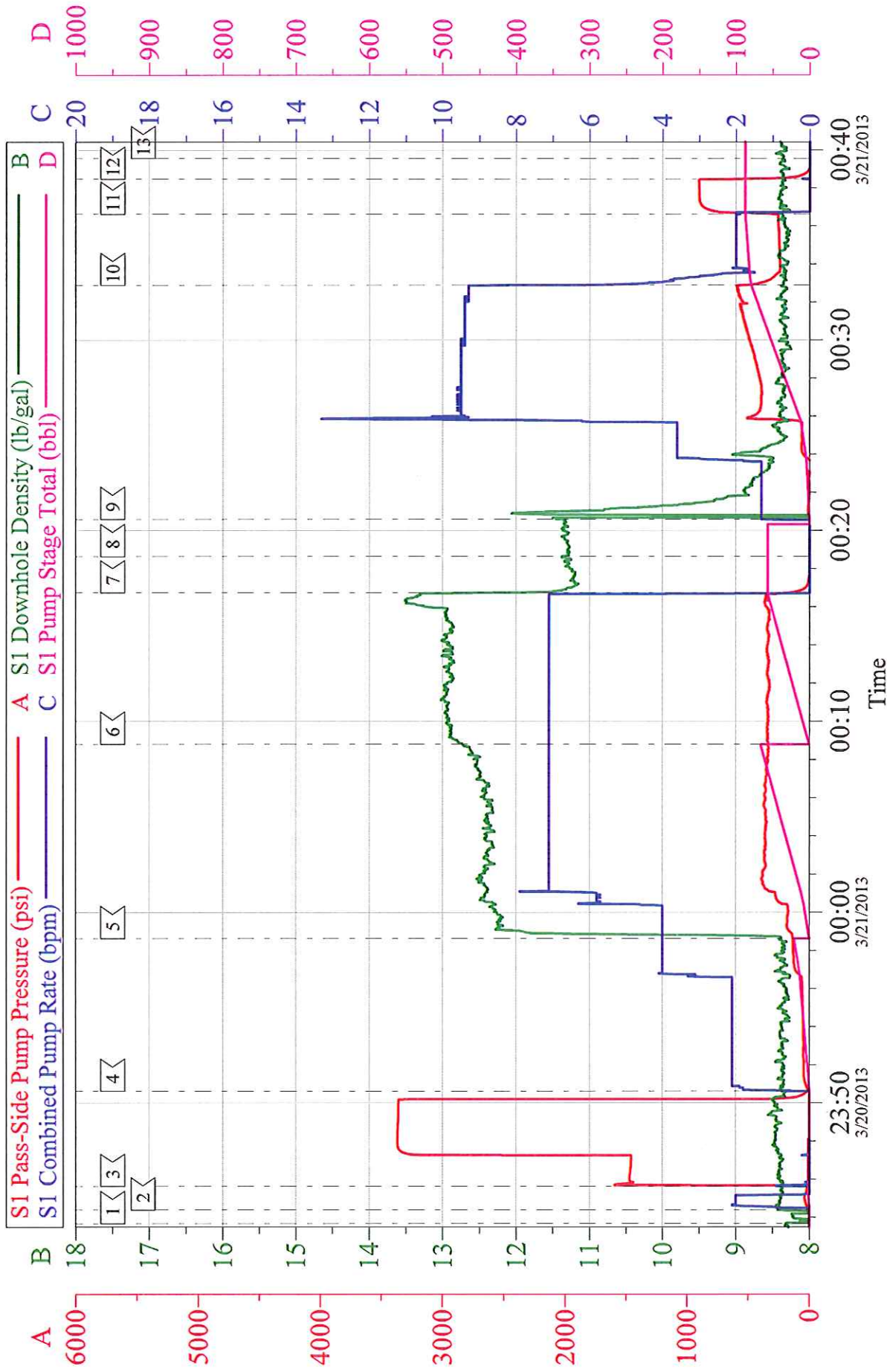
Local Event Log

1	START JOB	3/20/2013 23:43:41	2	FILL LINES	3/20/2013 23:44:23
3	TEST LINES	3/20/2013 23:45:38	4	H2O SPACER	3/20/2013 23:50:38
5	LEAD CEMENT	3/20/2013 23:58:38	6	TAIL CEMENT	3/21/2013 00:08:48
7	SHUT DOWN	3/21/2013 00:16:44	8	DROP PLUG	3/21/2013 00:18:38
9	H2O DISPLACEMENT	3/21/2013 00:20:36	10	SLOW RATE	3/21/2013 00:32:52
11	BUMP PLUG	3/21/2013 00:36:37	12	CHECK FLOATS	3/21/2013 00:38:28
13	END JOB	3/21/2013 00:39:33			

Customer: WPX	Job Date: 20-Mar-2013	Sales Order #: 900300630
Well Description: REF 513-29	Job Type: SURFACE	ADC Used: YES
Company Rep: RON TOWERS	Cement Supervisor: ED ARNOLD	Elite #9: DAN SINCLAIR

# WPX - RWF 513-29

## 9 5/8" SURFACE



Customer: WPX	Job Date: 20-Mar-2013	Sales Order #: 900300630
Well Description: REF 513-29	Job Type: SURFACE	ADC Used: YES
Company Rep: RON TOWERS	Cement Supervisor: ED ARNOLD	Elite #9: DAN SINCLAIR