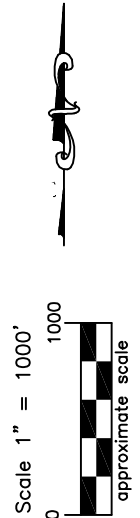
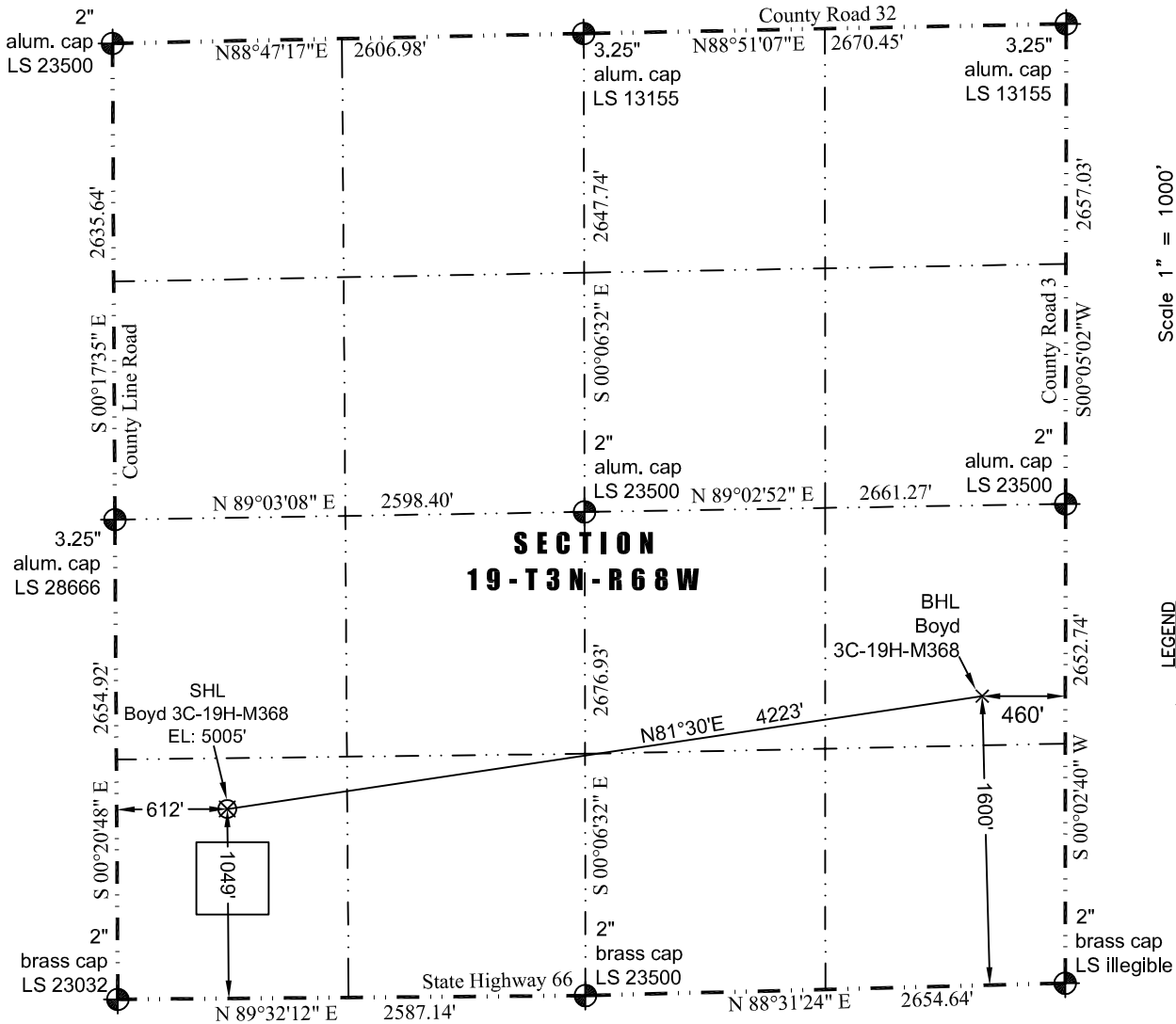


JR Land Surveying, LLC  
 8114 Northstar Drive  
 Windsor, Colorado 80528  
 P. 970-576-4641

# WELL LOCATION CERTIFICATE

*THIS MAP DOES NOT REPRESENT A BOUNDARY SURVEY*



**LEGEND**  
 — found survey monument  
 (c) — calculated dimension

## SECTION 19-T3N-R68W

In accordance with a request from Jay Knutson of EnCana Oil & Gas (USA) Inc., JR Land Surveying, LLC has determined the location of the **Boyd 3C-19H-M368** well site to be SHL: 1049' FSL and 612' FWL, (BHL: 1600' FSL and 460' FEL), as measured at ninety (90) degrees from the section lines of Section 19, Township 3 North, Range 68 West of the 6th Principal Meridian, Weld County Colorado.

Surface Hole Data:

Latitude: N 40.20655° (BHL: 40.20820°)  
 Longitude: W 105.05298° (BHL: 105.03802°)  
 PDOP: 1.2

Nearest:

Building: 540' northwest	Above Ground Utility: 552' southeast
Public Road: 603' west	Railroad: 11,205' west
Property Line: 270' north	Well Window: SHL is 183' outside
Existing Well: Haley #2, 5,364' northeast	

Notes:

- 1) Bearings and distances based on NAD 83 Colorado North State Plane Coordinates using RTK GPS observations taken 5/28/13 by operator John Rice.
- 2) Conversion factor to ground (1.0002868332).
- 3) Elevations based on NAVD 88 GPS heights and Geoid 2003 corrections.
- 4) The surface use is a abandoned dairy farm.

**NOTICE:** According to Colorado law you must commence any legal action based upon any defect in this W.L.C. within three years after you first discover such defect. In no event may any action based upon any defect in this W.L.C. be commenced more than ten years from this said date of the certification shown hereon.

I hereby certify that this Well Location Certificate was prepared by me or under my direct supervision on 5/29/2013 for and on behalf of EnCana Oil & Gas (USA) Inc. That it is not a Land Survey Plat or an Improvement Survey Plat and that it is not to be relied upon for establishment of fences, buildings, or other future improvement lines.

38219  
 5-29-2013  
 JOHN ROBERT MCGEEHEE  
 PROFESSIONAL SURVEYOR  
 WELLS

John Robert McGehee LS#38219  
 Well: Boyd 3C-19H-M368 WLC