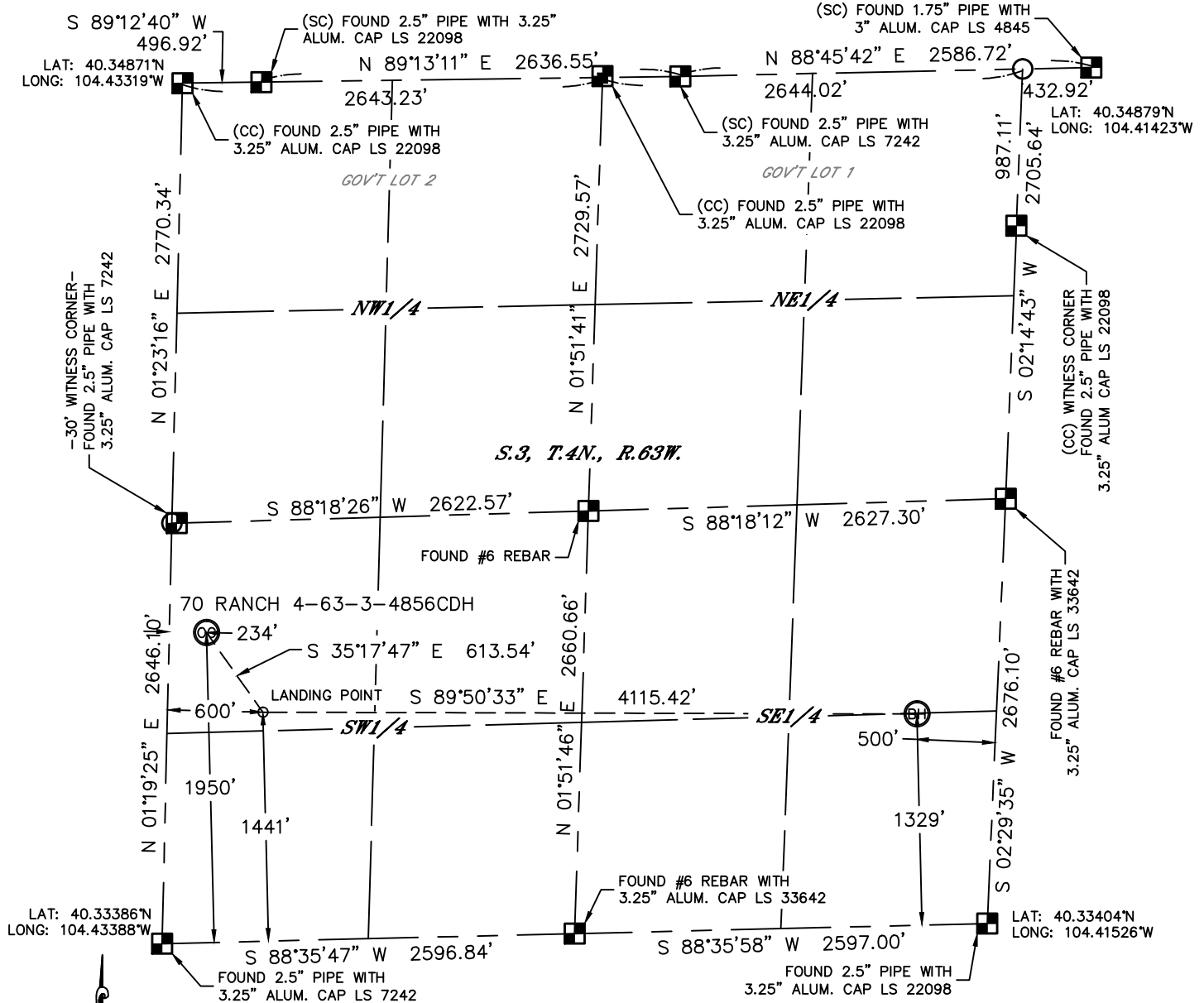


WELL LOCATION CERTIFICATE

SECTION: 3
TOWNSHIP: 4N
RANGE: 63W

THIS MAP DOES NOT REPRESENT A BOUNDARY SURVEY



In accordance with a request from Glenn Berglund with BILL BARRETT CORPORATION Lat40^o, Inc. has determined the surface location of the 70 RANCH 4-63-3-4856CDH to be 1950' from the SOUTH line and 234' from the WEST line and the bottom hole to be 1329' from the SOUTH line and 500' from the EAST line as measured at right angles from the section lines of Section 3, Township 4 North, Range 63 West of the Sixth Principal Meridian, County of Weld, State of Colorado.

I hereby state that this Well Location Certificate was prepared by me, or under my direct supervision, that the fieldwork was completed on 1/10/2013, for and on behalf of BILL BARRETT CORPORATION. That this is not a Land Survey Plat or an Improvement Survey Plat, and that it is not to be relied upon for establishment of fence, building, or other future improvement lines.

NOTE:

- 1) Bearings shown are Grid Bearings of the Colorado State Plane Coordinate System, North Zone, North American Datum 1983/2007. The lineal dimensions as contained herein are based upon the "U.S. Survey Foot."
- 2) Ground elevations are based on an observed GPS elevation (NAVD 1988 DATUM).
- 3) IMPROVEMENTS: See LOCATION DRAWING for all visible improvements within 400' of disturbed area.
- 4) SURFACE USE: RANGELAND
- 5) INSTRUMENT OPERATOR: WYATT HALL

NOTE

According to Colorado law, you must commence any legal action based upon any defect in this W.L.C. within three years after you discover such defect. In no event, may any action based upon any defect in this survey be commenced more than ten years after the date of the certificate shown hereon. (13-80-105 C.R.S.)

SURFACE LOCATION

LAT: 40.33922°N (40°20'21.2"N)
LONG: 104.43280°W (104°25'58.1"W)
LAT: 40.33924°N (NAD27)
LONG: 104.43229°W (NAD27)

PDOP: 1.5
ELEV: 4559'


1/4, 1/4: NW1/4SW1/4

NEAREST PROPERTY LINE: 234' WEST

LANDING POINT

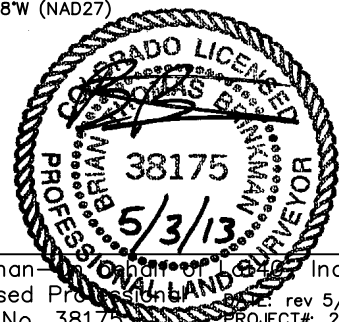
LAT: 40.33784°N (40°20'16.2"N)
LONG: 104.43155°W (104°25'53.6"W)
LAT: 40.33786°N (NAD27)
LONG: 104.43104°W (NAD27)

LEGEND

- = ALIQUOT MONUMENT AS DESCRIBED
 = CALCULATED POSITION

BOTTOM HOLE

LAT: 40.33767°N (40°20'15.6"N)
LONG: 104.41679°W (104°25'00.5"W)
LAT: 40.33769°N (NAD27)
LONG: 104.41628°W (NAD27)



Brian T. Brinkman
Colorado Licensed Professional Surveyor
Land Surveyor No. 38175

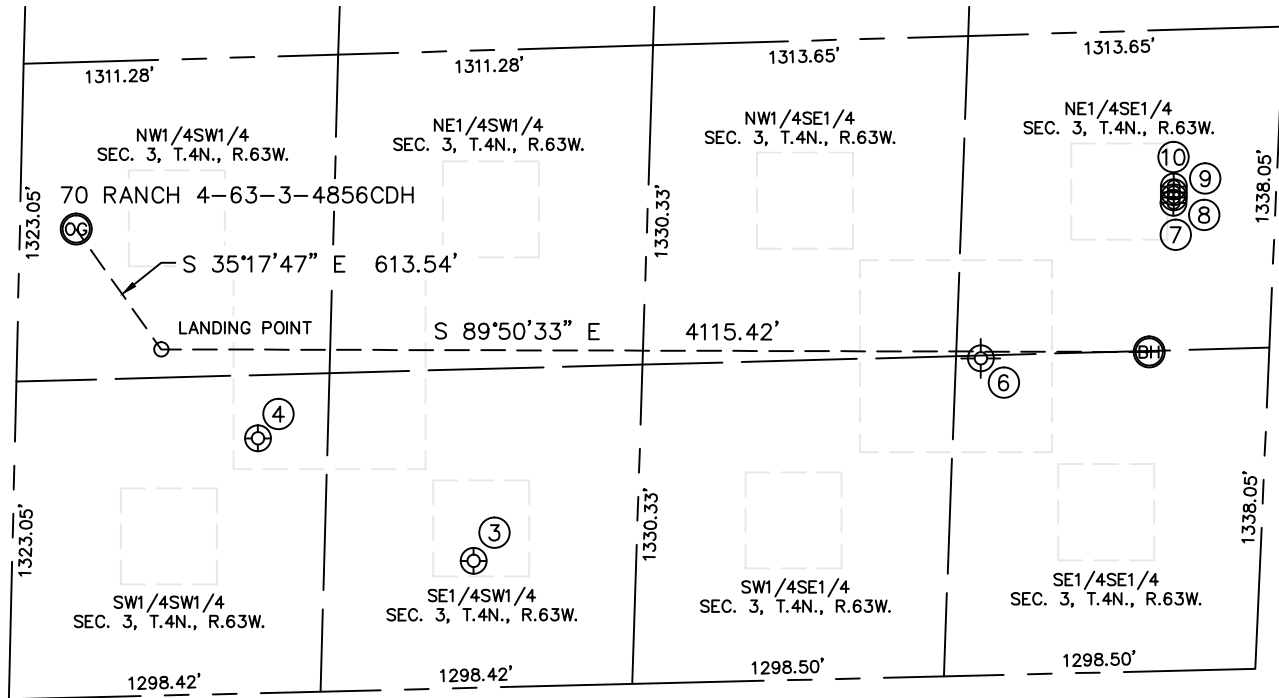


Lat40°, Inc. 1635 Foxtrail Drive, Suite 325 Loveland, CO 970-776-3321

SITE SKETCH

70 RANCH 4-63-3-4856CDH

SECTION: 3
TOWNSHIP: 4N
RANGE: 63W



③

CROISSANT 24-3
SE1/4SW1/4
529' FSL
1922' FWL
LAT-40.33538°N
LONG-104.42692°W
PDOP: 1.3
ELEV: 4567'

④

CROISSANT 1
SW1/4SW1/4
1060' FSL
1011' FWL
LAT-40.33681°N
LONG-104.43012°W
PDOP: 2.2
ELEV: 4568'

⑥

RONALD 1-B
(Plugged & Abandoned)
SE1/4SE1/4
1320' FSL (COGCC)
1200' FEL (COGCC)
LAT-40.33727°N (COGCC)
LONG-104.41899°W (COGCC)
PDOP: N/A
ELEV: 4540' (COGCC)

⑦

70 RANCH
4-63-3-49H
NE1/4SE1/4
1947' FSL
426' FEL
LAT-40.33937°N
LONG-104.41640°W
PDOP: 1.4
ELEV: 4543'

⑧

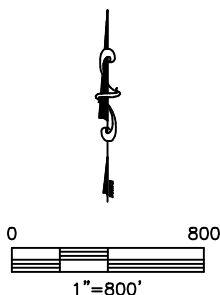
70 RANCH
4-63-3-48H
NE1/4SE1/4
1970' FSL
426' FEL
LAT-40.33943°N
LONG-104.41639°W
PDOP: 1.2
ELEV: 4543'

⑨

70 RANCH
4-63-3-33H
NE1/4SE1/4
1992' FSL
426' FEL
LAT-40.33949°N
LONG-104.41639°W
PDOP: 1.9
ELEV: 4542'

⑩

70 RANCH
4-63-3-32H
NE1/4SE1/4
2014' FSL
428' FEL
LAT-40.33955°N
LONG-104.41639°W
PDOP: 1.2
ELEV: 4542'



DATE: rev 5/3/2013
PROJECT#: 2013002