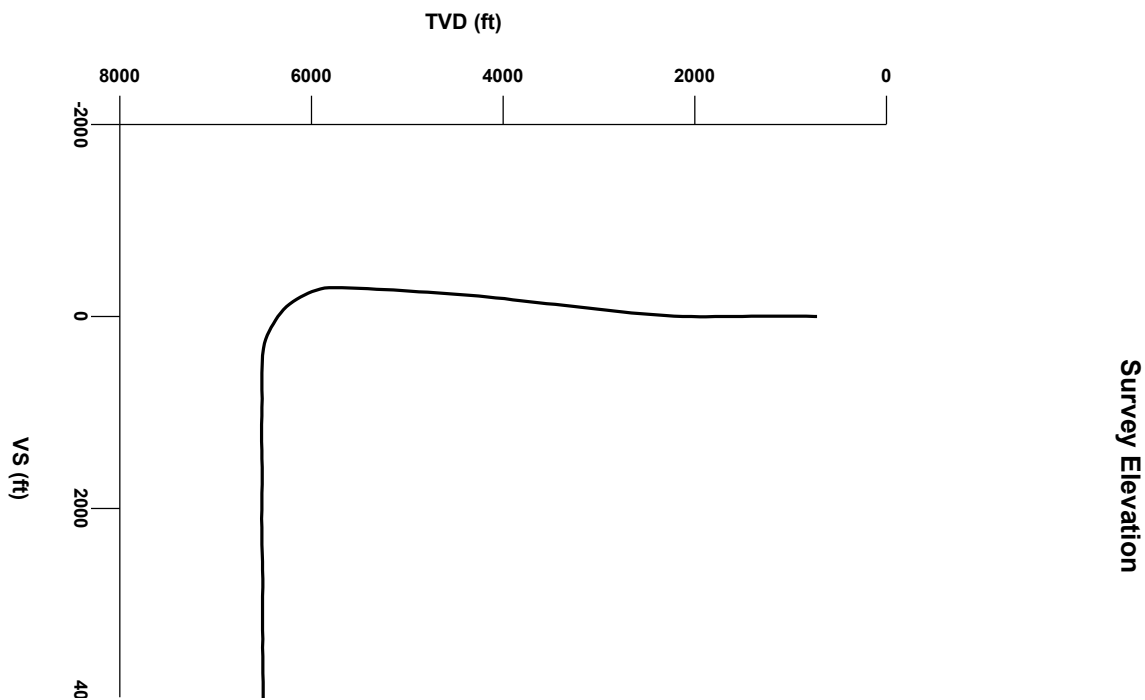
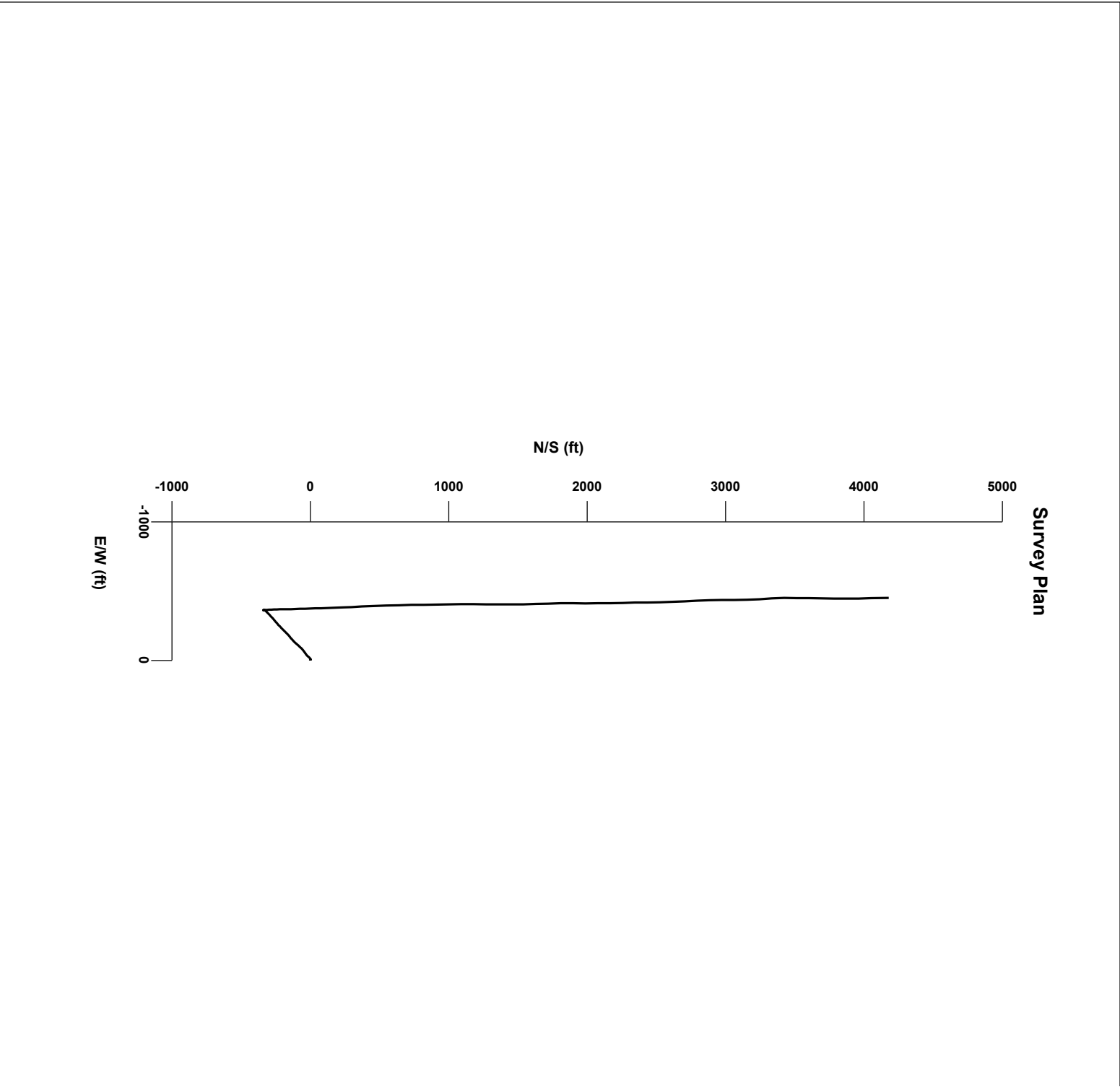
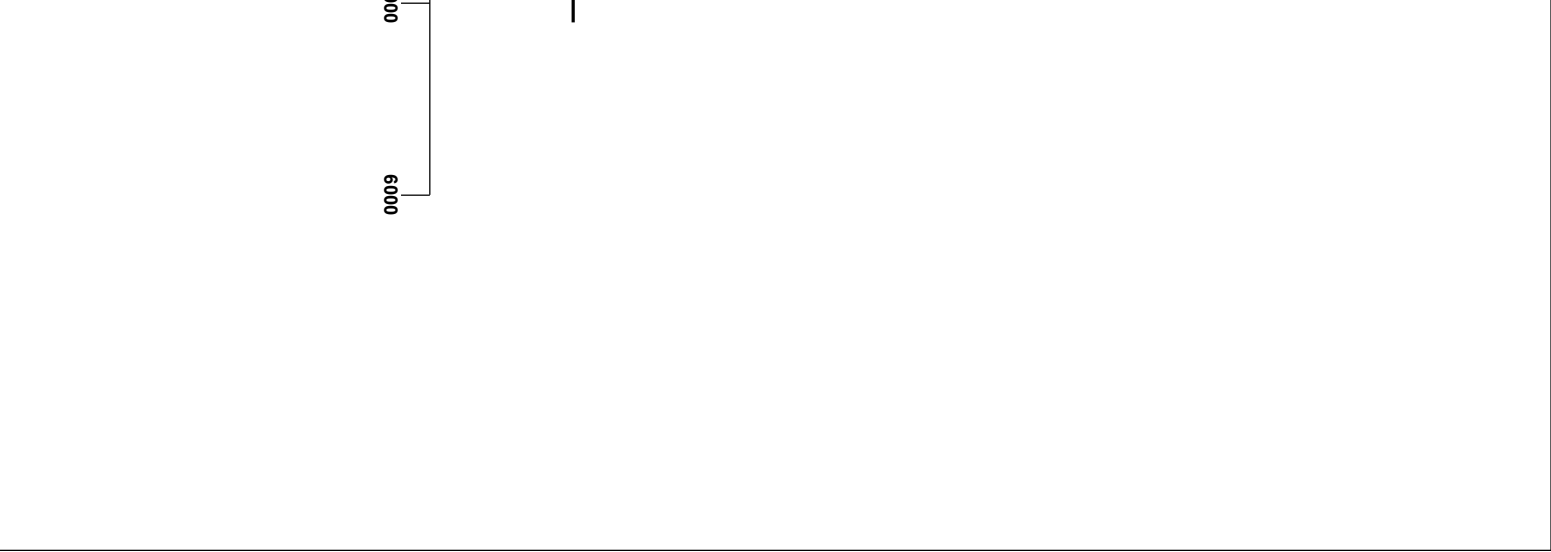


LOG created using LPLOT VH Version 3.0, March 23, 2013, Copyright (C) 1999-2009 Pason Systems Corp.

OPERATOR: NOBLE ENERGY INC
WELL: WILD HORSE GV28-72HN
LOCATION: SEC28 T9N R61W
COUNTY: WELD
STATE: COLORADO
SPOT: 402' FSL, 293' FEL
ELEVATION: 4958' GL, 4974' KB
FIELD: WILDCAT
SPUD DATE: 3/13/13
TD DATE: 3/23/13
DATES LOGGED: 3/15/13 - 3/23/13
DEPTHS LOGGED: 726' - 10796'
GEOLOGISTS: GARY MYERS, TED STOCKWELL
DRILLING FLUID: LSND
DRILLING RIG: PRECISION 828
API: 05-123-36676
LOG TYPE: HORIZONTAL
SCALE: 1:240 (5 inches per 100 feet)
REMARKS: WELLSITE GEOLOGICAL SERVICES PROVIDED BY COLUMBINE LOGGING INC.

LOG CONTINUES FROM FILE: Wild Horse GV28-72HN Vert.lplot





Chalk

Marl

Shaly Sandstone

Silty Shale

MODIFIERS

B Bentonite

ENGINEERING SYMBOLS

Bit Change

Connection

Midnight Depth

Casing

Connection Gas

Normal Fault

Casing

Arrow

Arrow

DEPTH (FEET)

5750

60

70

80

90

5800

10

20

30

40

50

60

LOG CONTINUES FROM FILE:
Wild Horse GV28-72HN Vert.lplot

SHAKER BYPASSED

607u

221u

506

GAS

0

UNITS

2000

C1

0

PPM

200000

C2

0

PPM

200000

C3

0

PPM

200000

C4

0

PPM

200000

ROP

0

MIN/FT

2

SLIDE/ROTATE

BIT #2
SMITH
SDI611, 8.75"
SER# JF8197
IN @ MD 726'

Depth:
WT 9.55
YP 11
CI-800

CUTTINGS LITHOLOGY

607u

221u

506

MD 5855'

INC 3.6°

AZI 352.4°

TVD 5817.5'

SL TYSH: m- dkg- gybrn, sbndd- sl
firm, rthy- gt tex, sl calc, sdy ip, grdg
shyss, ~1% whn, cl- trnsi mgr ss w/ c

TVD

ft

5800

0

API

200

GAMMA RAY

0

API

200

OIL SHOW

T F G

6800

ft

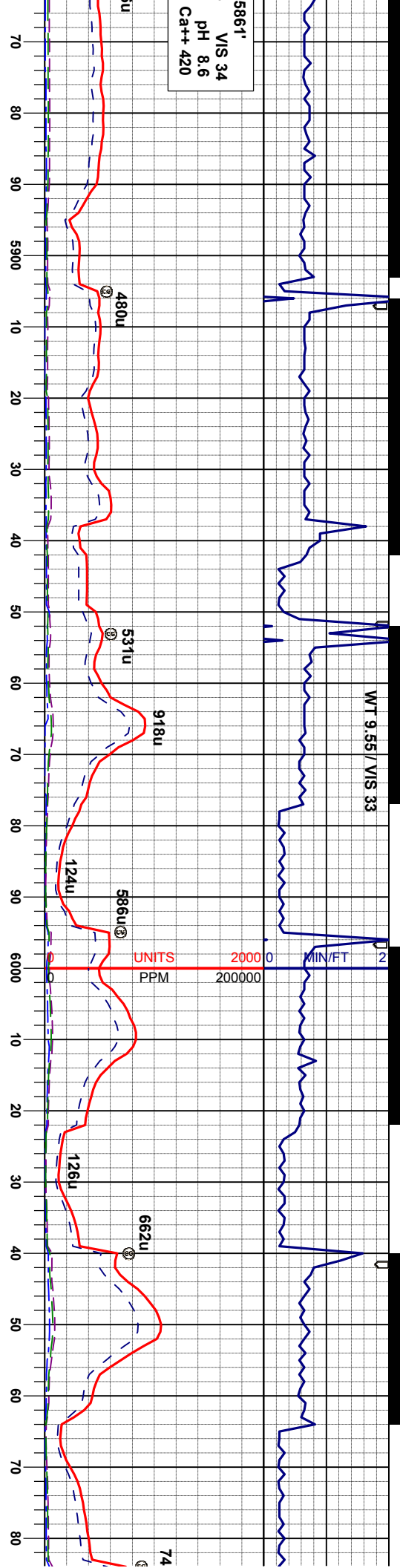
5800

0

API

200

SAMPLE PHOTOS



BEGIN 30' SAMPLES
60' DESCRIPTIONS

MD 5900'
INC 8.8°
AZI 357.3°
TVD 5862.2'

MD 5945'
INC 13.7°
AZI 357.8°
TVD 5906.3'

MD 5990'
INC 17.1°
AZI 356.4°
TVD 5949.7'

MD 6035'
INC 20.7°
AZI 356.3°
TVD 5992.2'

MD 6035'
INC 20.7°
AZI 357°
TVD 6033'

SLTYSH: m- dkgy, sbply-pty, sft-firm, rthy-
gt tex, sl calc, occ sdy ip, sl mica, tr ss, tr
fos

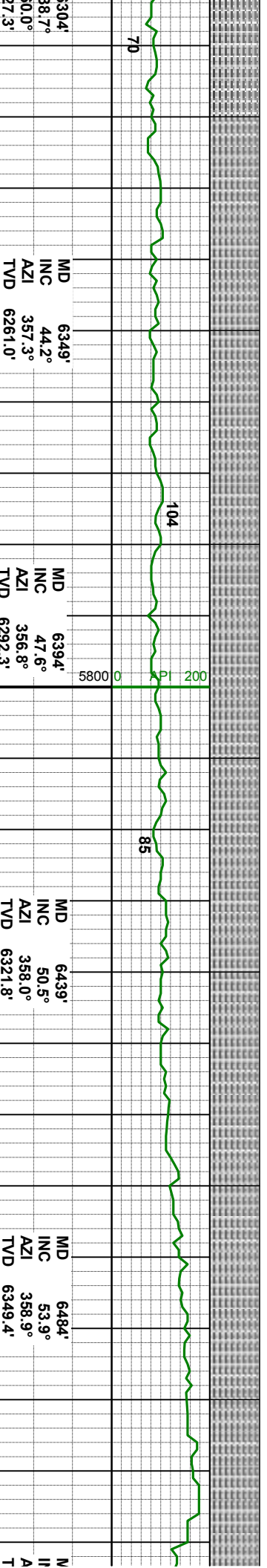
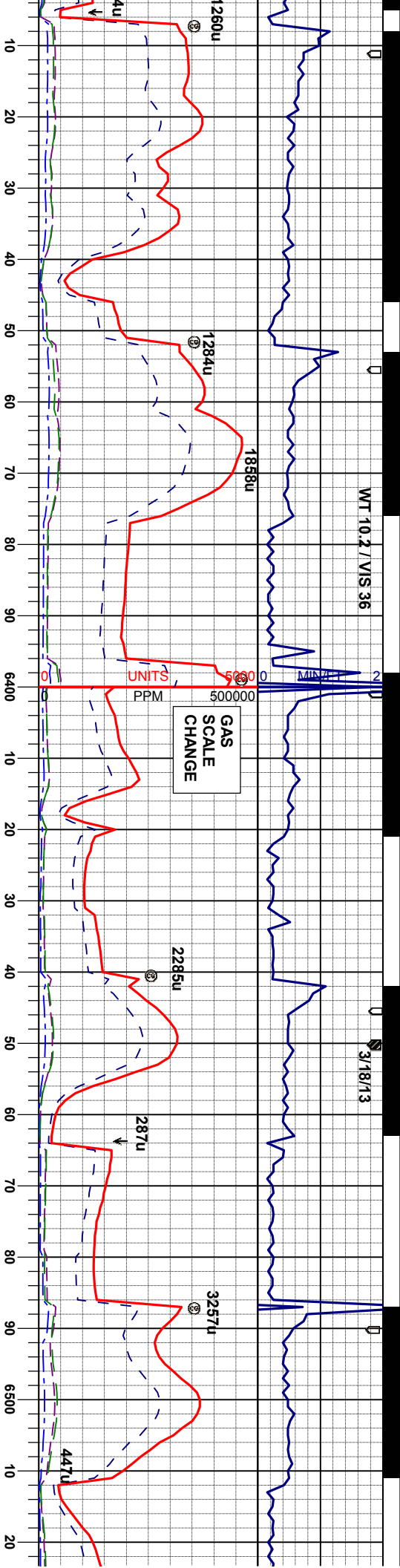
SLTYSH: m- dkgy, sbply-pty, sft-firm, rthy-
gt tex, silty, arg-sil mtbx, sl calc, sdy ip, grdg-
shyslst, tr shyslst, sl mica, tr ss, tr fos

SLTYSH: lt- dkgy, sbply-pty, sft-firm, rthy-
gt tex, silty, arg-sil mtbx, sl calc, sdy ip, grdg-
shyslst, tr shyslst, sl mica, tr ss, tr fos, tr
pyr



WT 10.2 / VIS 36

3/18/13



MD 6349'
INC 44.2°
AZI 357.3°
TVD 6261.0'

MD 6394'
INC 47.6°
AZI 356.8°
TVD 6292.3'

MD 6439'
INC 50.5°
AZI 358.0°
TVD 6321.8'

MD 6484'
INC 53.9°
AZI 358.9°
TVD 6349.4'

N II A T

SLTYSH: lt-dkgy, sbply-ply, sft-firm, rthy-
gt tex, silty, arg-sil mtx, sl calc, sdy ip, grdg-
shyslst, tr ss

SLTYSH: lt-dkgy, sbply-ply, sft-firm, rthy-
gt tex, silty, arg-sil mtx, occ stri, sl calc, sdy
ip, grdg-shyslst, tr shyslst, tr ss

SLTYSH: m-dkgy, sbply-ply, sft-firm, rthy-
gt tex, silty, arg-sil mtx, occ stri, sl calc, sdy
ip, grdg-shyslst, tr shyslst tr ss, tr fos, tr
pyr, tr-scat bent

SLTYSH: m-dk
gt tex, silty, arg-
ip, grdg-shyslst
pyr, abnt bent, c

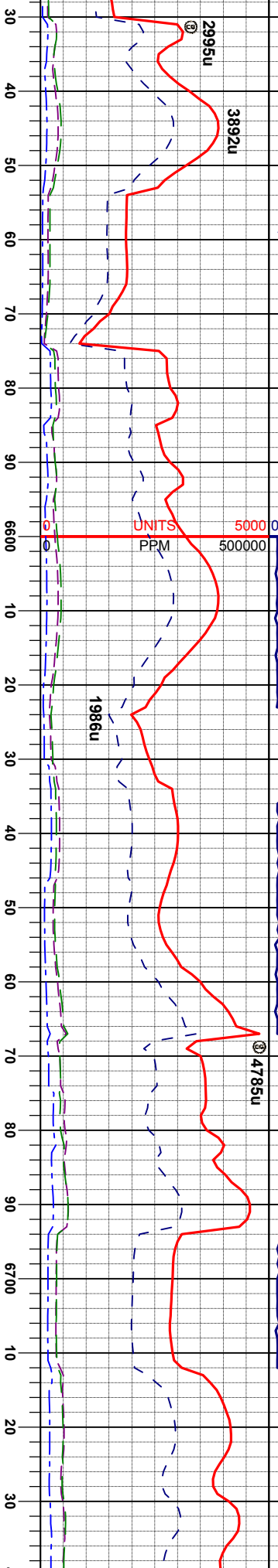


WOB 20
RPM 35
PP 3300
SPM 140

ROP
SCALE
CHANGE

Depth: 5861'
WT 10.3 VIS 36
YP 10 pH 8.3
Cl- 950 Ca++ 480

WT 10.5 / VIS 36



SHARON SPRINGS
MARKER
6651' MD, 6386' TVD

TVD
SCALE
CHANGE

NIOBRARA A CHALK
LOGGER TOP
6608' MD, 6414' TVD

MD 6529'
INC 57.3°
AZI 358.2°
TVD 6374.8'

MD 6574'
INC 60.6°
AZI 358.2°
TVD 6398.0'

MD 6619'
INC 62.3°
AZI 358.5°
TVD 6419.5'

MD 6664'
INC 62.6°
AZI 358.7°
TVD 6440.4'

MD 6709'
INC 65.2°
AZI 357.3°
TVD 6460.2'

CHK: lt- mgy, mot, sft-firm, sl arg, sbblky-sbply, rthy lstr, vcalc, tr pyr, tr bent
MRL: m-dkgy, sft- mfirm, sbblky-sbply, tr ply, rthy-str, arg, org/calc mt, mod calc, bent
CHK: wh-lt- mgy, mot, sft-firm, sl arg, sbblky-sbply, rthy lstr, vcalc

CHK: lt- mgy, mot, sft-firm, sl arg, sbblky-sbply, rthy lstr, vcalc, tr pyr, tr bent
MRL: m-dkgy, sft- mfirm, sbblky-sbply, tr ply, rthy-str, arg, org/calc mt, mod calc, bent
CHK: wh-lt- mgy, mot, sft-firm, sl arg, sbblky-sbply, rthy lstr, vcalc

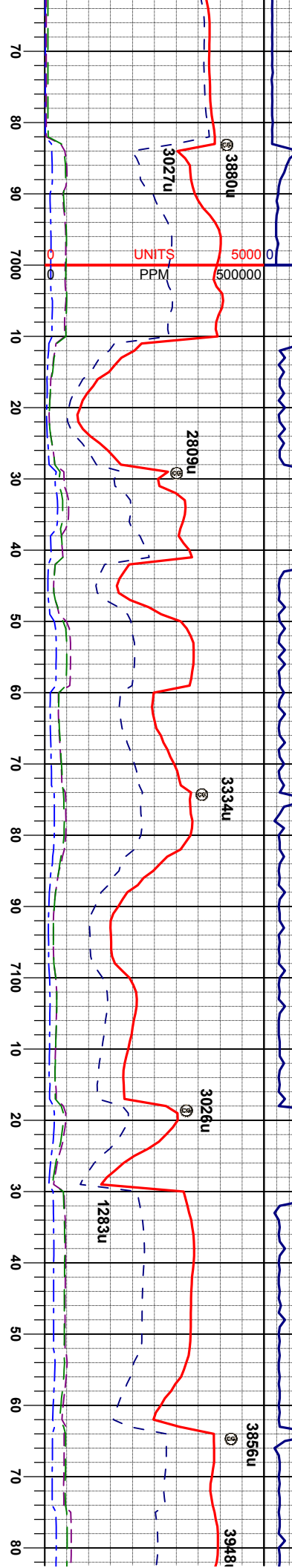
CHK: lt- mgy, mot, sft-firm, sl arg, sbblky-sbply, rthy lstr, vcalc, tr pyr, tr bent
MRL: m-dkgy, sft- mfirm, sbblky-sbply, tr ply, rthy-str, arg, org/calc mt, mod calc, bent
CHK: wh-lt- mgy, mot, sft-firm, sl arg, sbblky-sbply, rthy lstr, vcalc

Depth: 6983'

ROP
T 9.6
P 8
VIS 31
pH 9.7
Ca++ 320

WOB 20
RPM 80
PP 2750
SPM 63

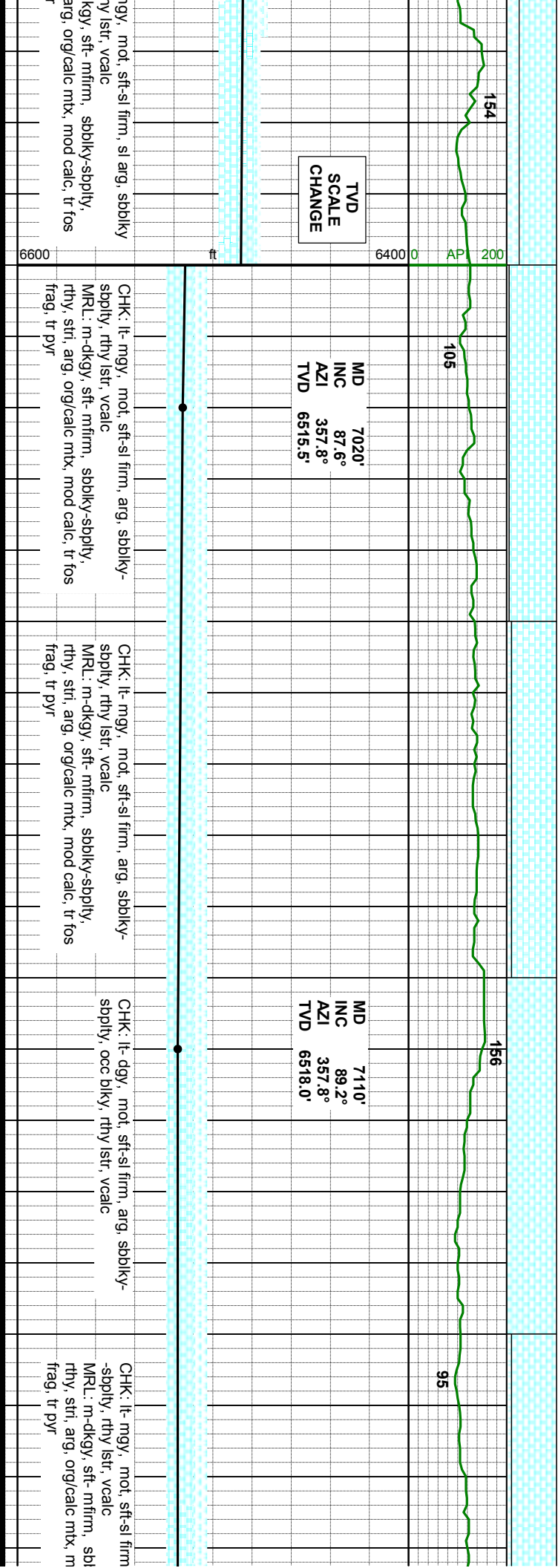
WT 9.7 / VIS 43

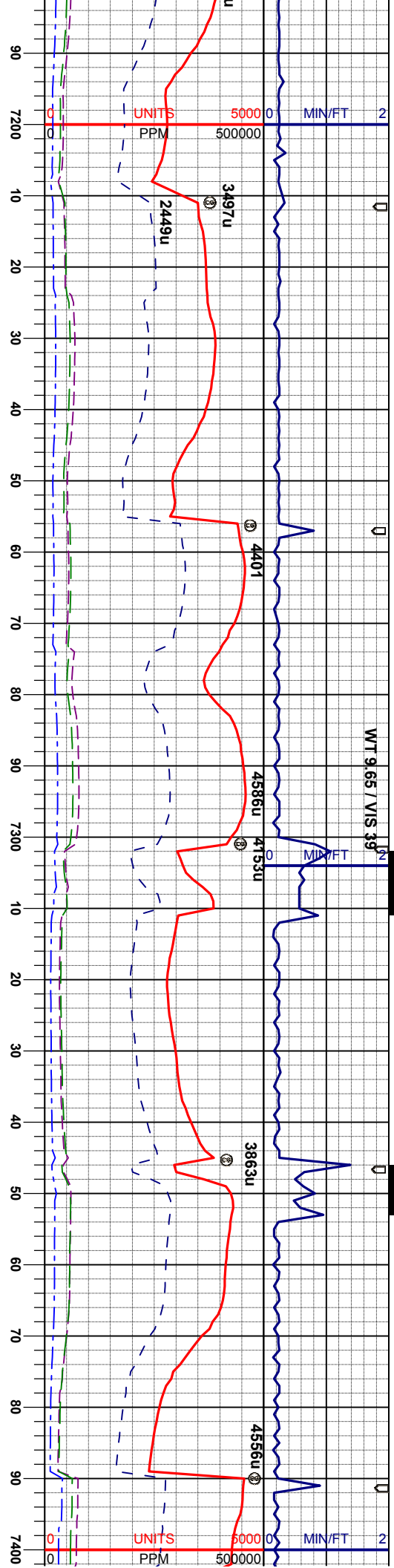


TVD
SCALE
CHANGE

MD 7020'
INC 87.6°
AZI 357.8°
TVD 6515.5'

MD 7110'
INC 89.2°
AZI 357.8°
TVD 6518.0'





MD 7200' INC 90.7° AZI 358.9° TVD 6518.1'

MD 7290' INC 91.5° AZI 358.5° TVD 6516.3'

MD 7380' INC 89.5° AZI 360.0° TVD 6515.6'

sl arg, sbbkly

CHK: lt-mgy, mot, sft-sl firm, arg, sbbkly-sbply, rthy istr, vcalc

CHK: lt-mgy, mot, sft-sl firm, arg, sbbkly-sbply, rthy istr, vcalc

CHK: lt-mgy, mot, sft-sl firm, arg, sbbkly-sbply, rthy istr, tr fos, tr pyr, vcalc

MRL: m-dkgy, sft-mfirm, sbbkly-sbply, rthy, stri, arg, org/calc mtx, mod calc

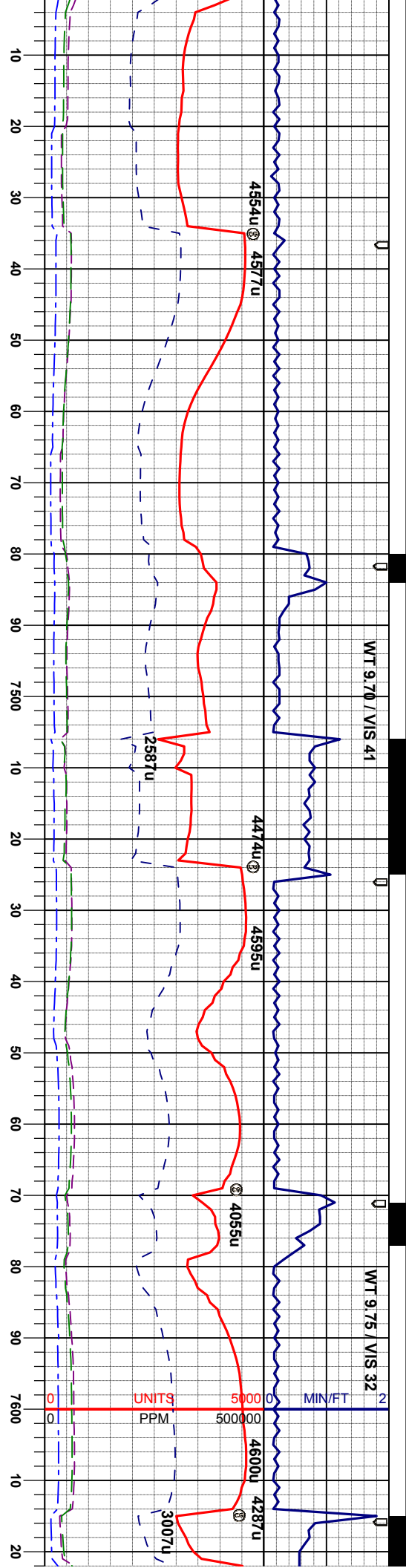
CHK: lt-mgy, mot, sft-sl firm, arg, sbbkly-sbply, rthy istr, tr fos, tr pyr, vcalc

MRL: m-dkgy, sft-mfirm, sbbkly-sbply, rthy, stri, arg, org/calc mtx, mod calc

6600

6600





MD 7470'
INC 89.0°
AZI 359.2°
TVD 6516.7'

MD 7560'
INC 87.9°
AZI 358.7°
TVD 6519.2'

CHK: lt-mgy, mot, sft-sl firm, arg, sbblky-sbply, rthy lstr, tr fos, tr pyr, vcalc
MRL: m-dkgy, sft-mfirm, sbblky-sbply, rthy, str, arg, org/calc mtz, mod calc

CHK: lt-mgy, mot, sft-sl firm, arg, sbblky-sbply, rthy lstr, tr fos, tr pyr, vcalc
MRL: m-dkgy, sft-mfirm, sbblky-sbply, rthy, str, arg, org/calc mtz, mod calc

CHK: lt-mgy, mot, sft-sl firm, arg, sbblky-sbply, rthy lstr, tr fos, tr pyr, vcalc
MRL: m-dkgy, sft-mfirm, sbblky-sbply, rthy, str, arg, org/calc mtz, mod calc

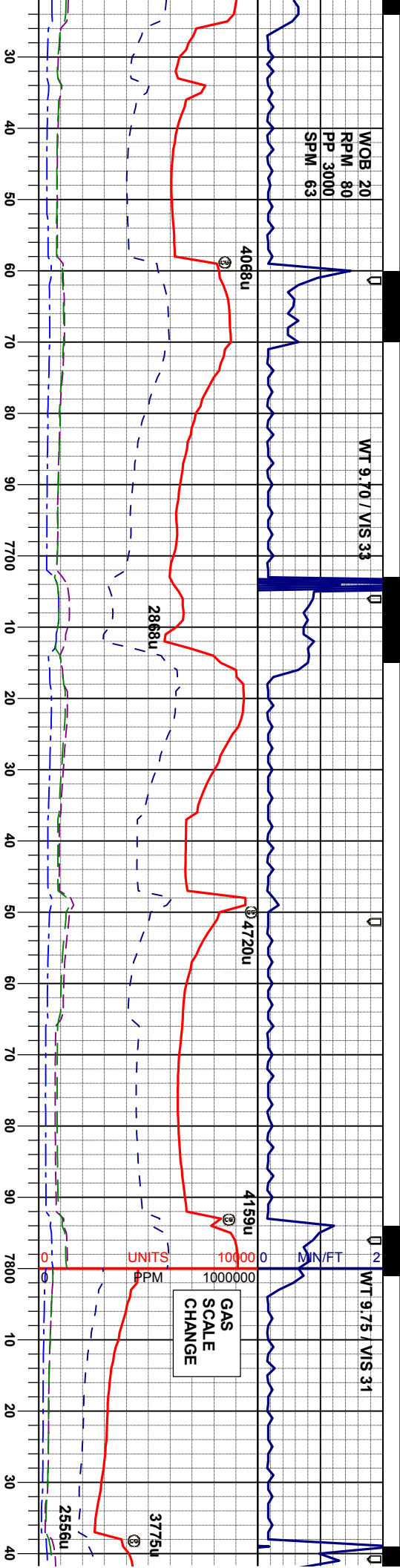
CHK: lt-mgy, mot, sft-sl firm, arg, sbblky-sbply, rthy lstr, tr fos, tr pyr, vcalc
MRL: m-dkgy, sft-mfirm, sbblky-sbply, rthy, str, arg, org/calc mtz, mod calc



WOB 20
RPM 80
PP 3000
SPM 63

WT 9.70 / VIS 33

WT 9.75 / VIS 31



MD 7649'
INC 88.5°
AZI 359.2°
TVD 6522.0'

MD 7739'
INC 93.1°
AZI 0.8°
TVD 6522.1'

MD 7829'
INC 91.1°
AZI 0.5°
TVD 6520.2'

CHK: lt-mgy, mot, sft-sl firm, arg, sbbkly-sbply, rthy lstr, tr fos, tr pyr, vcalc
MRL: m-dkgy, sft-mfirm, sbbkly-sbply, rthy, stri, arg, org/calc mtix, mod calc

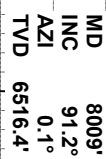
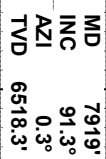
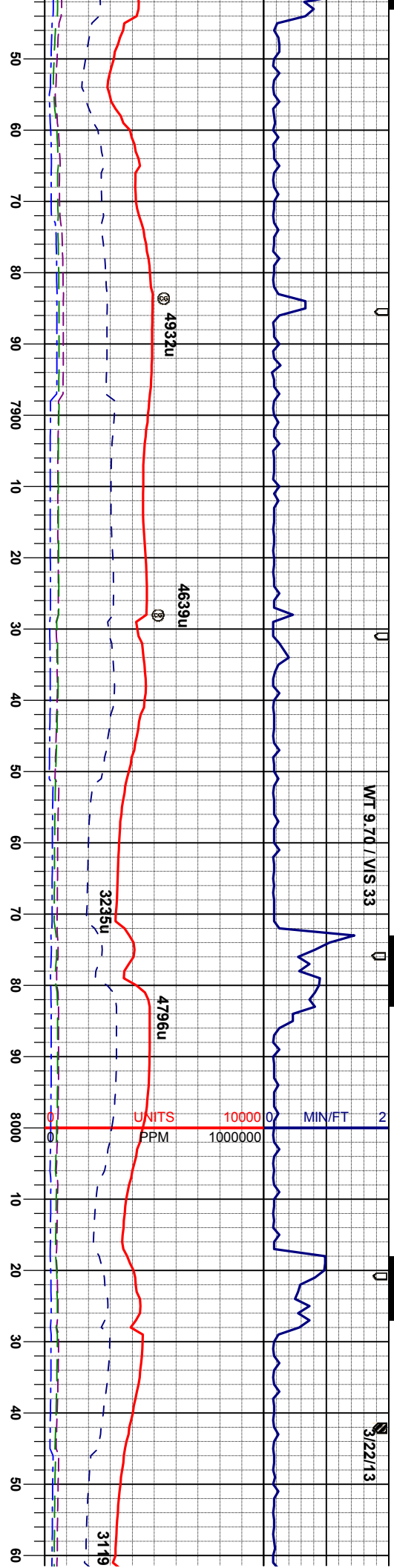
CHK: lt-mgy, mot, sft-sl firm, arg, sbbkly-sbply, rthy lstr, tr fos, tr pyr, vcalc
MRL: m-dkgy, sft-mfirm, sbbkly-sbply, rthy, stri, arg, org/calc mtix, mod calc

CHK: lt-mgy, mot, sft-sl firm, arg, sbbkly-sbply, rthy lstr, abnt fos, tr pyr, vcalc
MRL: m-dkgy, sft-mfirm, sbbkly-sbply, rthy, stri, arg, org/calc mtix, mod calc

CHK: lt-mgy, mot, sft-sl firm, arg, sbbkly-sbply, rthy lstr, abnt fos, tr pyr, vcalc
MRL: m-dkgy, sft-mfirm, sbbkly-sbply, rthy, stri, arg, org/calc mtix, mod calc

CHK: lt-mgy, mot, sft-sl firm, arg, sbbkly-sbply, rthy lstr, tr fos, tr pyr, vcalc
MRL: m-dkgy, sft-mfirm, sbbkly-sbply, rthy, stri, arg, org/calc mtix, mod calc





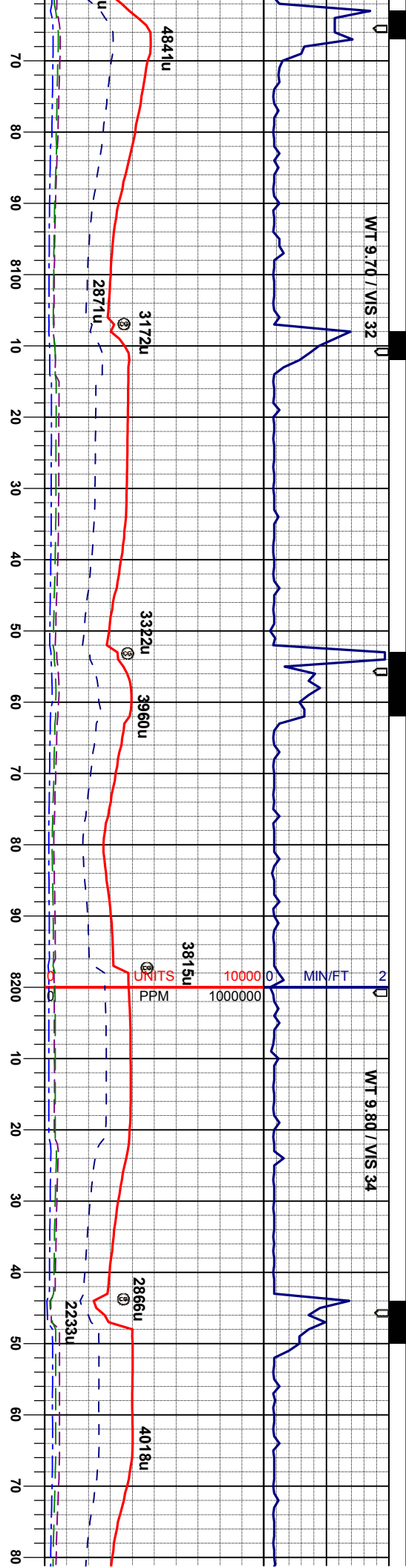
CHK: wh-It-mgy, mot, sft-sl firm, arg, sbblky-sbply, rthy lstr, tr fos, tr pyr, vealc
MRL: m-dkgy, sft-mfirm, sbblky-sbply, rthy, strl, arg, org/calc mtx, mod calc

CHK: wh-ll-mgy, mot, sft-sl-firm, arg, sbblky-sbply, rthy lstr, tr fos, tr pyr, vcalc
MRL: m-dkgy, sft-mfirm, sbblky-sbply, rthy, stri, arg, org/calc mtx, mod calc

CHK: wh-It-mg/, mot, sft-sl firm, arg, sbblky-sbply, rthy lstr, tr fos, tr pyr, vcalc
MRL: m-dkgy, sft-fmfrm, sbblky-sbply, rthy, strl, arg, org/calc mtx, mod calc

CHK: wh-lt-mgy, mot, sft-sl firm, arg, sbblky-sbply, rthy lstr, tr fos, tr pyr, vcalc MRL: m-dkgy, sft-mfirm, sbblky-sbply, rthy, strl, arg, orgcalc mtz, mod calc

CHK: w
sbbiky-
MRL: r
rthy, str



MD 8099'
INC 90.6°
AZI 358.4°
TVD 6515.0'

MD 8189'
INC 89.7°
AZI 358.2°
TVD 6514.7'

MD 8
INC 35
AZI 651
TVD 651

CHK: wh-lt-mgy, mot, sft-sl-firm, arg, sbbky-sbply, rthy lstr, tr fos, tr pyr, vcalc
MRL: m-dkgy, sft-mfirm, sbbky-sbply, rthy, stri, arg, org/calc mtx, mod calc

CHK: wh-lt-mgy, mot, sft-sl-firm, arg, sbbky-sbply, rthy lstr, tr fos, tr pyr, vcalc
MRL: m-dkgy, sft-mfirm, sbbky-sbply, rthy, stri, arg, org/calc mtx, mod calc

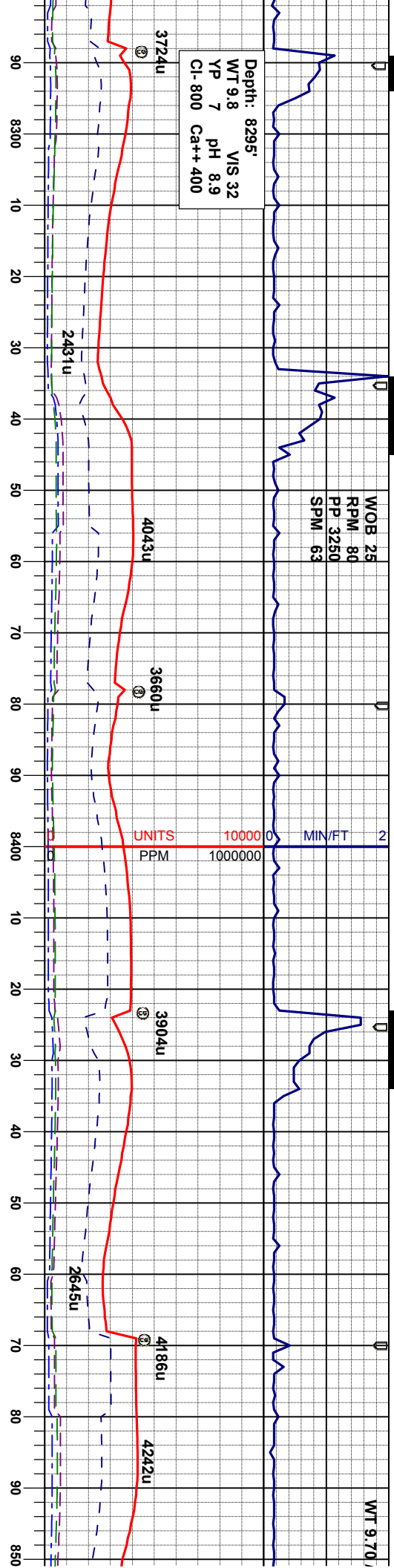
CHK: wh-lt-mgy, mot, sft-sl-firm, arg, sbbky-sbply, rthy lstr, tr fos, tr pyr, vcalc
MRL: m-dkgy, sft-mfirm, sbbky-sbply, rthy, stri, arg, org/calc mtx, mod calc



Depth: 8295'
WT 9.8 VIS 32
YP 7 PH 8.9
Cl- 800 Ca++ 400

WOB 25
RPM 80
PP 3250
SPM 63

WT 9.70



279'
9.4°
8.5°
5.5'

MD 8369'
INC 88.7°
AZI 359.2°
TVD 6516.9'

MD 8458'
INC 90.0°
AZI 0.3°
TVD 6517.9'

l firm, arg,
s, tr pyr, vcalc
sbbkly-sbply,
mod calc

CHK: wh-lt-mgy, mot, sft-sl firm, arg,
sbbkly-sbply, rthy istr, tr fos, tr pyr, vcalc
MRL: m-dkgy, sft-mfirm, sbbkly-sbply,
rthy, stri, arg, org/calc mtz, mod calc

CHK: wh-lt-mgy, mot, sft-sl firm, arg,
sbbkly-sbply, rthy istr, tr fos, tr pyr, vcalc
MRL: m-dkgy, sft-mfirm, sbbkly-sbply,
rthy, stri, arg, org/calc mtz, mod calc

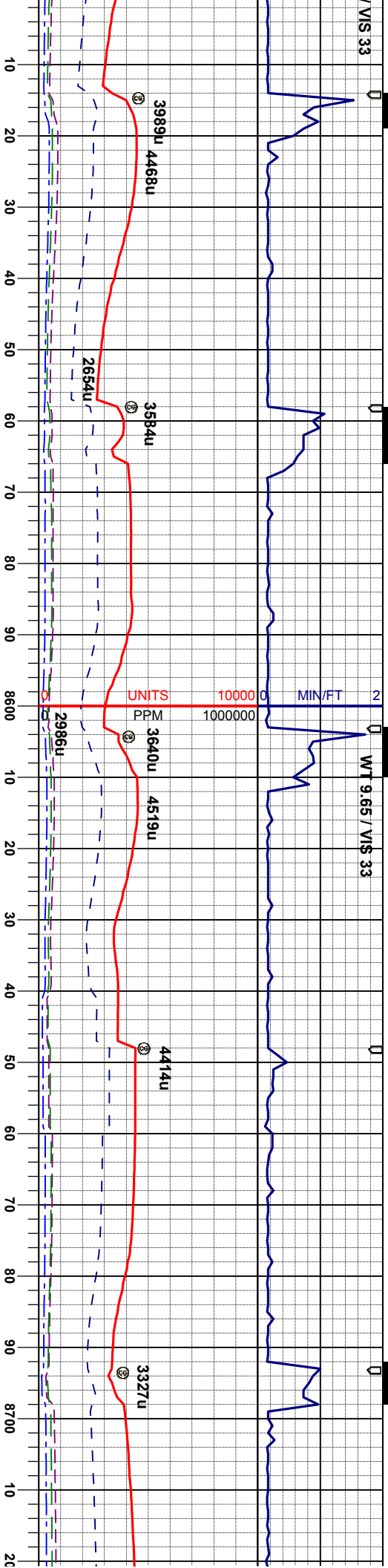
CHK: wh-lt-mgy, mot, sft-sl firm, arg,
sbbkly-sbply, rthy istr, tr fos, tr pyr, vcalc
MRL: m-dkgy, sft-mfirm, sbbkly-sbply,
rthy, stri, arg, org/calc mtz, mod calc

CHK: lt-mgy, mot, sft-sl firm, arg, sbbkly-
sbply, rthy istr, vcalc
MRL: m-dkgy, sft-mfirm, sbbkly-sbply,
rthy, stri, arg, org/calc mtz, mod calc



MS 33

WT 9.65 / VS 33



MD 8547'
INC 88.7°
AZI 0.3°
TVD 6519.0'

MD 8637'
INC 90.7°
AZI 359.6°
TVD 6519.4'

N
II
A
T

CHK: lt-mgy, mot, sft-sf firm, arg, sbblky-sbply, rthy lstr, vcalc
MRL: m-dkgy, sft-mfirm, sbblky-sbply, rthy, str, arg, org/calc mt, mod calc

CHK: lt-mgy, mot, sft-sf firm, arg, sbblky-sbply, rthy lstr, vcalc
MRL: m-dkgy, sft-mfirm, sbblky-sbply, rthy, str, arg, org/calc mt, mod calc

CHK: lt-mgy, mot, sft-sf firm, arg, sbblky-sbply, rthy lstr, vcalc
MRL: m-dkgy, sft-mfirm, sbblky-sbply, rthy, str, arg, org/calc mt, mod calc

CHK: lt-mgy, mot, sft-sf firm, arg, sbblky-sbply, rthy lstr, vcalc
MRL: m-dkgy, sft-mfirm, sbblky-sbply, rthy, str, arg, org/calc mt, mod calc

CHK: lt-mgy, mot, sft-sf firm, arg, sbblky-sbply, rthy lstr, vcalc
MRL: m-dkgy, sft-mfirm, sbblky-sbply, rthy, str, arg, org/calc mt, mod calc

6600

ft

6400 0 API 200

126

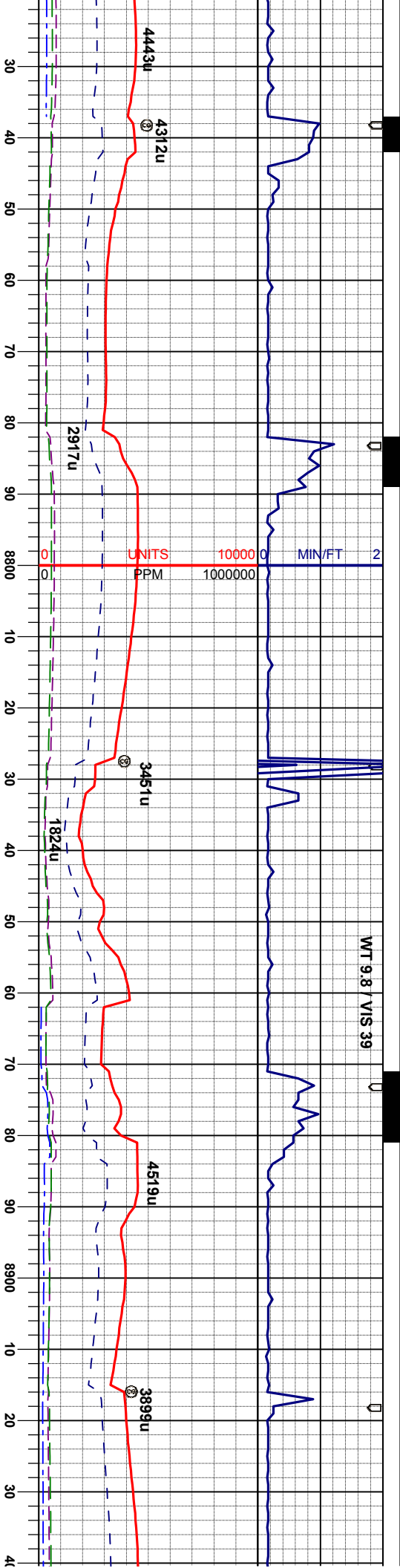
49

84

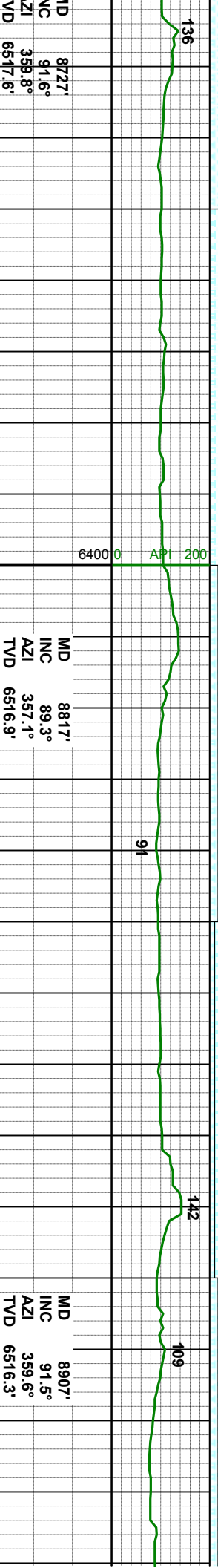
131

95





WT 9.8 / VIS 39

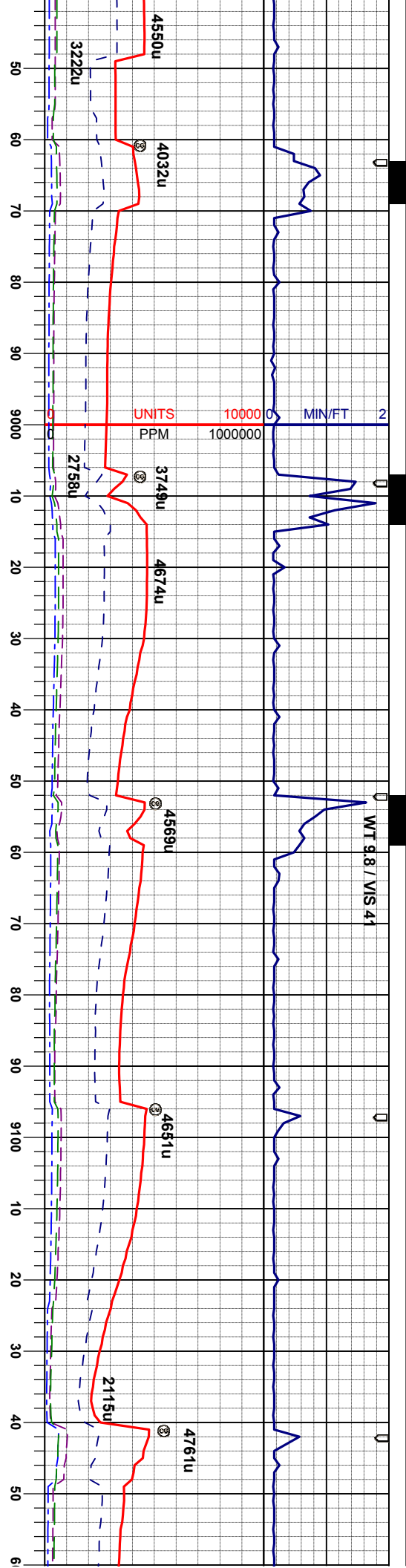


MD 8817'
INC 89.3°
AZI 357.1°
TVD 6516.9'

MD 8907'
INC 91.5°
AZI 359.6°
TVD 6516.3'

Depth (ft)	Log Description
30	ot, sft-si firm, arg, sbbkly-calcalc
35	CHK: lt-mgy, mot, sft-si firm, arg, sbbkly-spply, rthy istr, vcalc
40	MRL: m-dkgy, sft-mfirm, sbbkly-spply, rthy, stri, arg, org/calcalc mt, mod calc, tr pyr
45	CHK: lt-mgy, mot, sft-si firm, arg, sbbkly-spply, rthy istr, vcalc
50	MRL: m-dkgy, sft-mfirm, sbbkly-spply, rthy, stri, arg, org/calcalc mt, mod calc, tr pyr
55	CHK: lt-mgy, mot, sft-si firm, arg, sbbkly-spply, rthy istr, vcalc
60	MRL: m-dkgy, sft-mfirm, sbbkly-spply, rthy, stri, arg, org/calcalc mt, mod calc, tr pyr
65	CHK: lt-mgy, mot, sft-si firm, arg, sbbkly-spply, rthy istr, vcalc
70	MRL: m-dkgy, sft-mfirm, sbbkly-spply, rthy, stri, arg, org/calcalc mt, mod calc, tr pyr
75	CHK: lt-mgy, mot, sft-si firm, arg, sbbkly-spply, rthy istr, vcalc
80	MRL: m-dkgy, sft-mfirm, sbbkly-spply, rthy, stri, arg, org/calcalc mt, mod calc, tr pyr
85	CHK: lt-mgy, mot, sft-si firm, arg, sbbkly-spply, rthy istr, vcalc
90	MRL: m-dkgy, sft-mfirm, sbbkly-spply, rthy, stri, arg, org/calcalc mt, mod calc, tr pyr
95	CHK: lt-mgy, mot, sft-si firm, arg, sbbkly-spply, rthy istr, vcalc
100	MRL: m-dkgy, sft-mfirm, sbbkly-spply, rthy, stri, arg, org/calcalc mt, mod calc, tr pyr





MD 8996'
INC 91.9°
AZI 359.4°
TVD 6513.7'

CHK: lt-mgy, mot, sft-si firm, arg, sbblky-sbply, rthy istr, vcalc
MRL: m-dkgy, sft-mfirm, sbblky-sbply, rthy, stri, arg, org/calc mtx, mod calc

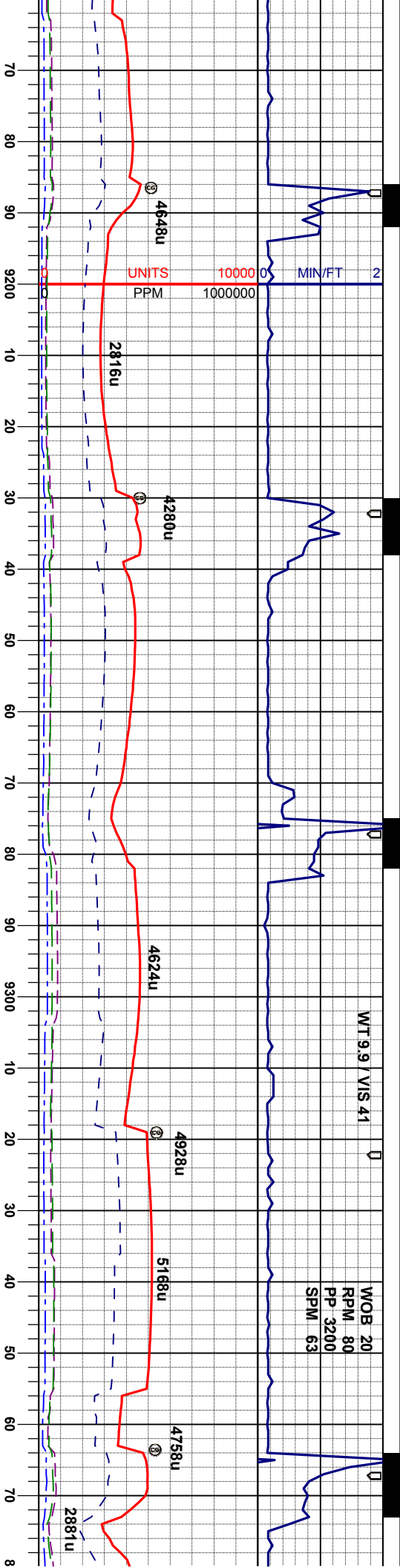
MD 9086'
INC 90.3°
AZI 358.7°
TVD 6511.9'

CHK: lt-mgy, mot, sft-si firm, arg, sbblky-sbply, rthy istr, vcalc
MRL: m-dkgy, sft-mfirm, sbblky-sbply, rthy, stri, arg, org/calc mtx, mod calc

CHK: lt-mgy, mot, sft-si firm, arg, sbblky-sbply, rthy istr, vcalc
MRL: m-dkgy, sft-mfirm, sbblky-sbply, rthy, stri, arg, org/calc mtx, mod calc, tr pyr

CHK: lt-mgy, mot, sft-si firm, arg, sbblky-sbply, rthy istr, vcalc
MRL: m-dkgy, sft-mfirm, sbblky-sbply, rthy, stri, arg, org/calc mtx, mod calc





MD 9176'
INC 91.8°
AZI 358.0°
TVD 6510.3'

API 200 6400 0 ft

MRL: m-dkgy, sft- mfirm, sbbiky-sbply, rthy, stri, arg, org/calc mtz, mod calc, tr pyr, tr bent
CHK: lt- mgy, mot, sft-sl firm, arg, sbbiky-sbply, rthy lstr, vcalc

MD 9266'
INC 90.3°
AZI 357.3°
TVD 6508.6'

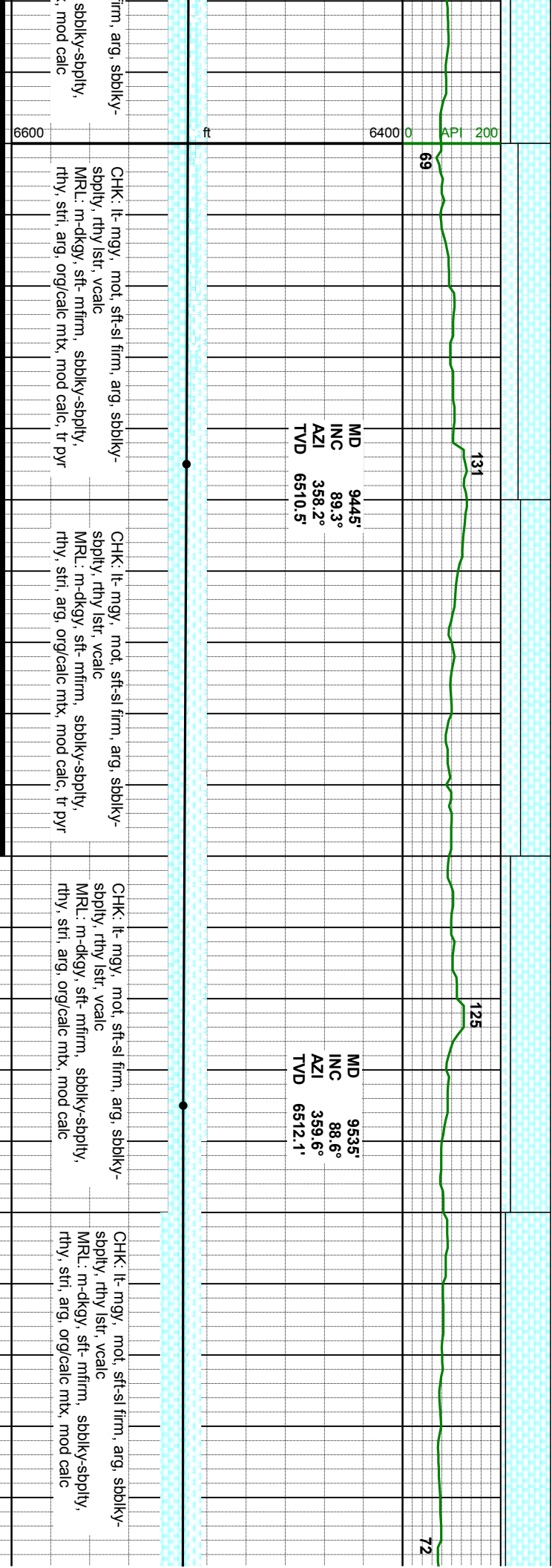
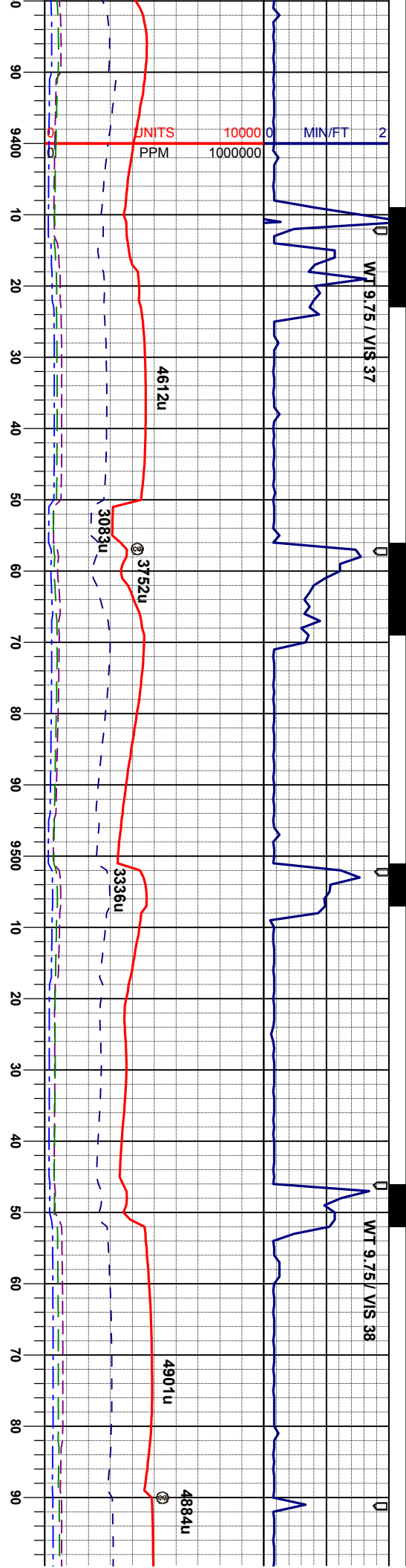
MRL: m-dkgy, sft- mfirm, sbbiky-sbply, rthy, stri, arg, org/calc mtz, mod calc, tr pyr, tr bent
CHK: lt- mgy, mot, sft-sl firm, arg, sbbiky-sbply, rthy lstr, vcalc

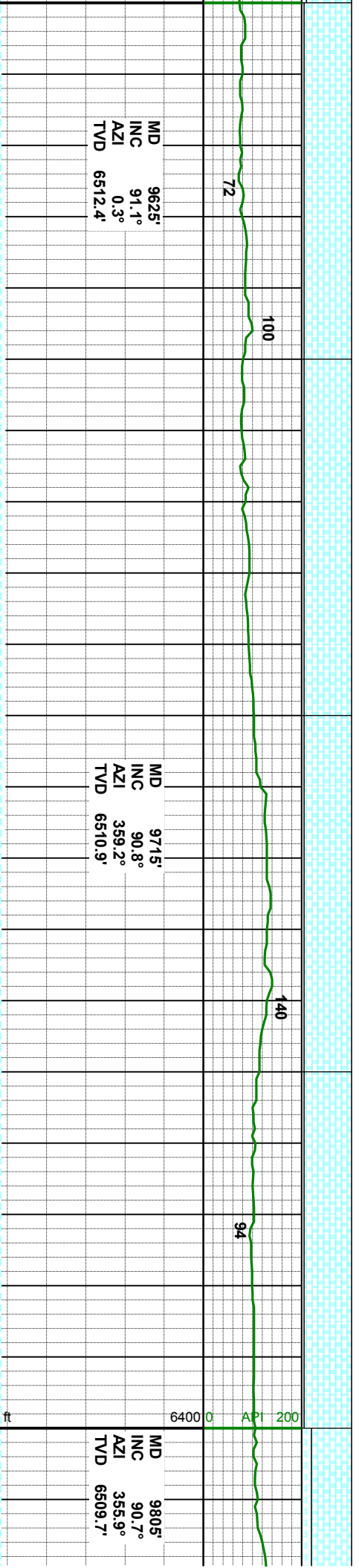
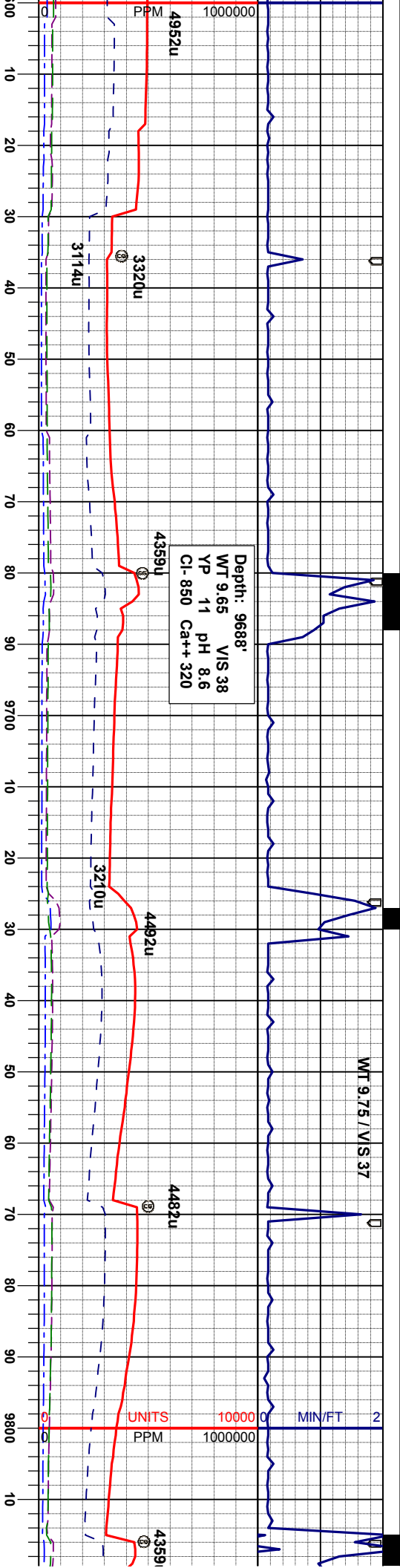
CHK: lt- mgy, mot, sft-sl firm, arg, sbbiky-sbply, rthy lstr, vcalc
MRL: m-dkgy, sft- mfirm, sbbiky-sbply, rthy, stri, arg, org/calc mtz, mod calc

MD 9356'
INC 89.0°
AZI 356.6°
TVD 6509.2'

CHK: lt- mgy, mot, sft-sl firm, arg, sbbiky-sbply, rthy lstr, vcalc
MRL: m-dkgy, sft- mfirm, rthy, stri, arg, org/calc mtz







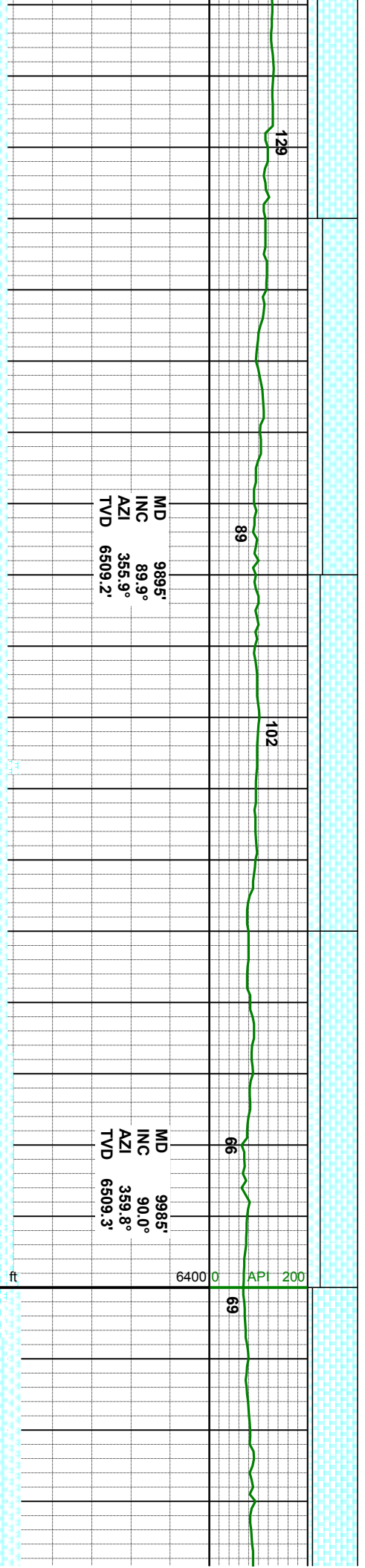
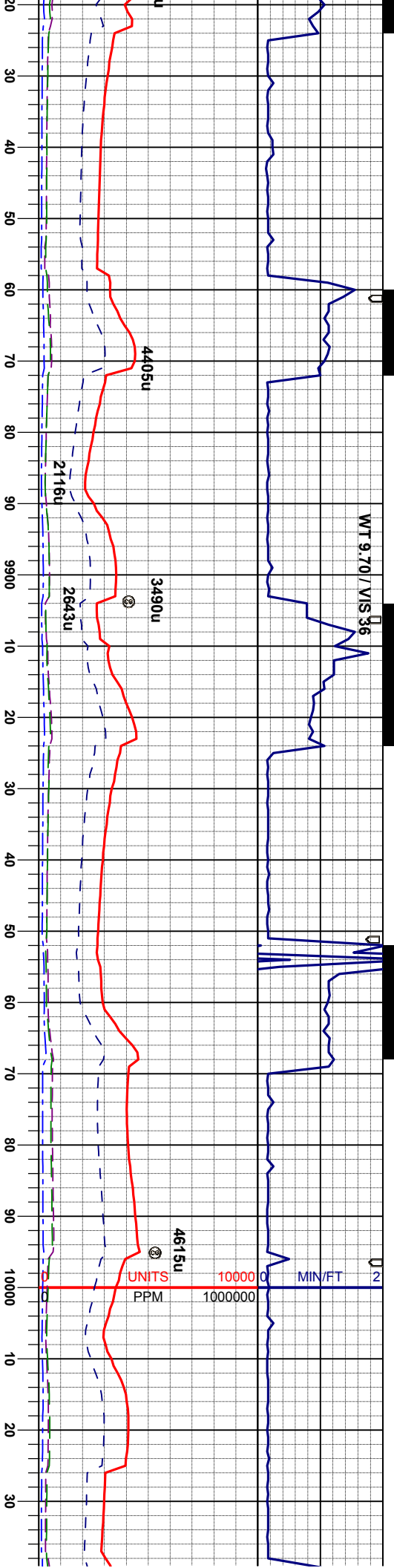
CHK: lt-mgy, mot, sft-sl firm, arg, sbblky-sbply, rthy lstr, vcalc
MRL: m-dkgy, sft-mfirm, sbblky-sbply, rthy, stri, arg, org/calc mtz, mod calc

CHK: lt-mgy, mot, sft-sl firm, arg, sbblky-sbply, rthy lstr, vcalc
MRL: m-dkgy, sft-mfirm, sbblky-sbply, rthy, stri, arg, org/calc mtz, mod calc

CHK: lt-mgy, mot, sft-sl firm, arg, sbblky-sbply, rthy lstr, vcalc
MRL: m-dkgy, sft-mfirm, sbblky-sbply, rthy, stri, arg, org/calc mtz, mod calc

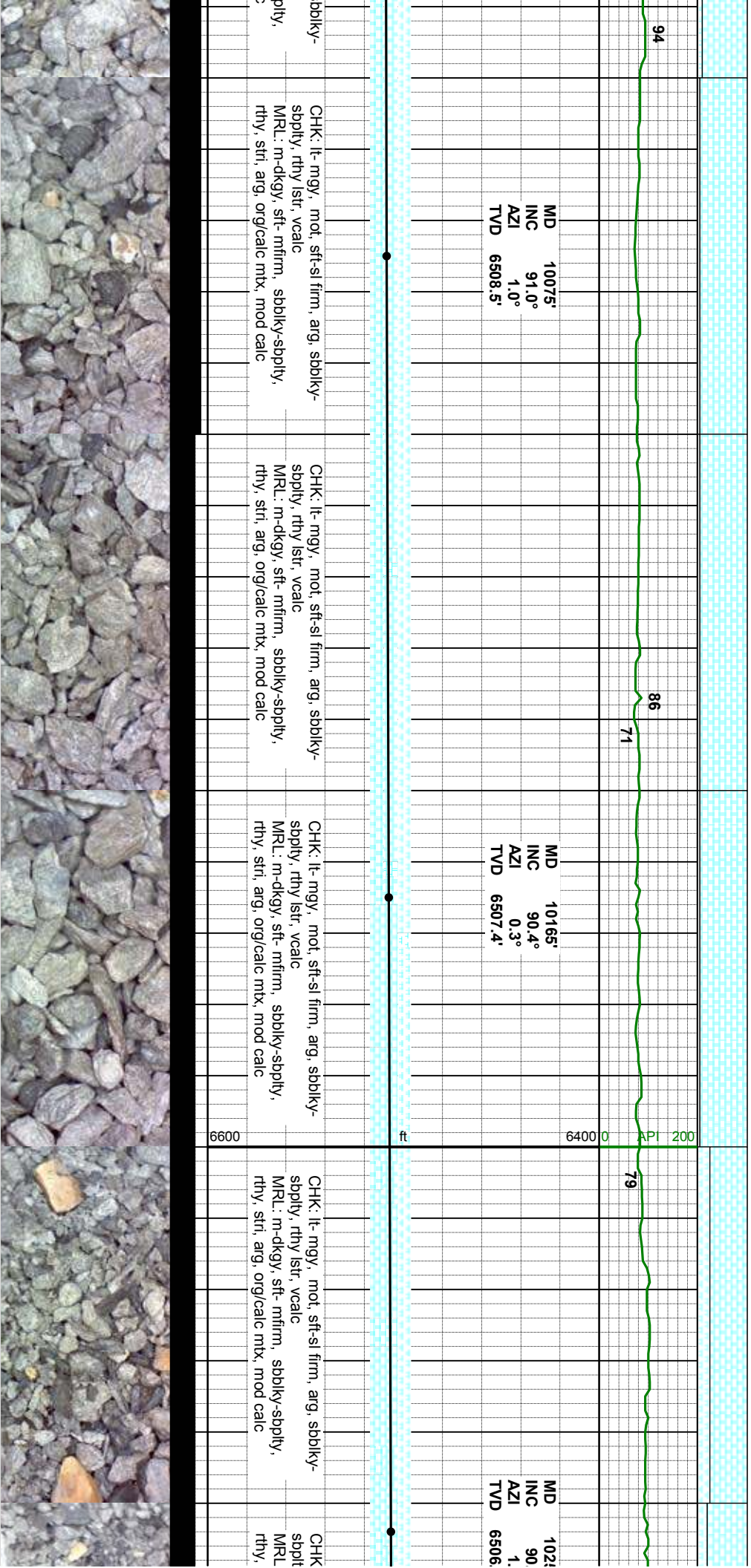
CHK: lt-mgy, mot, sft-sl firm, arg, sbblky-sbply, rthy lstr, vcalc
MRL: m-dkgy, sft-mfirm, sbblky-sbply, rthy, stri, arg, org/calc mtz, mod calc





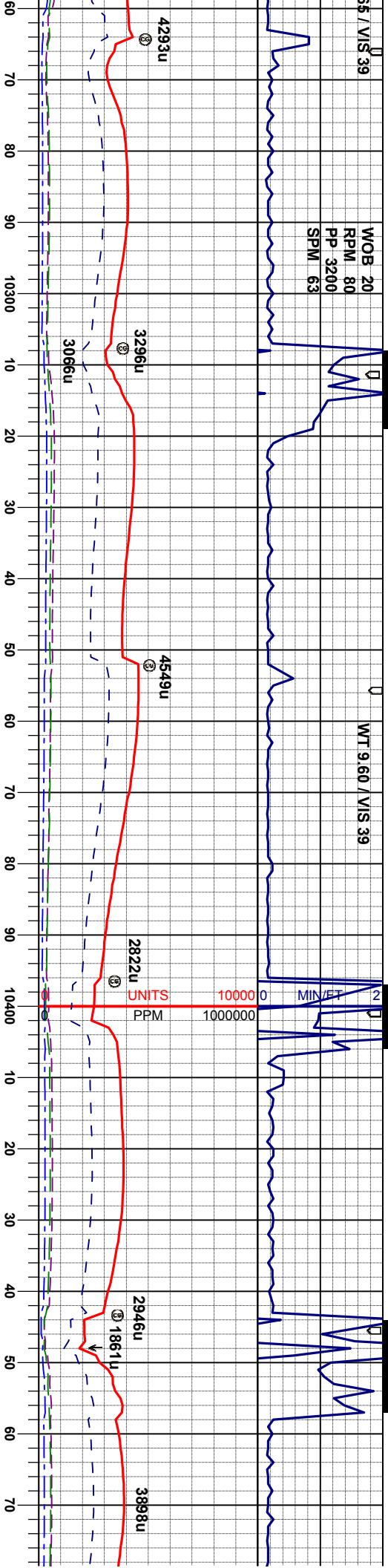
mot, sft-sl firm, arg, sbbkly-vcalc	CHK: lt-mgy, mot, sft-sl firm, arg, sbbkly-sbply, rthy lstr, vcalc	CHK: lt-mgy, mot, sft-sl firm, arg, sbbkly-sbply, rthy lstr, vcalc	CHK: lt-mgy, mot, sft-sl firm, arg, sbbkly-sbply, rthy lstr, vcalc
sft-mfirm, sbbkly-sbply, org/calc mt, mod calc	MR.L: m-dkgy, sft-mfirm, sbbkly-sbply, rthy, str, arg, org/calc mt, mod calc	MR.L: m-dkgy, sft-mfirm, sbbkly-sbply, rthy, str, arg, org/calc mt, mod calc	MR.L: m-dkgy, sft-mfirm, sbbkly-sbply, rthy, str, arg, org/calc mt, mod calc





MOB 20
RPM 80
PP 3200
SPM 63

WT 9.60 / VIS 39



MD 10344'
INC 90.5°
AZI 1.0°
TVD 6505.3'

MD 10434'
INC 90.6°
AZI 359.8°
TVD 6504.5'

lt-mgy, mot, sft-sl firm, arg, sbblky-
y, rthy lstr, vcalc
: m-dkgy, sft-mfirm, sbblky-sbply,
rthy, arg, org/calc mtx, mod calc

CHK: lt-mgy, mot, sft-sl firm, arg, sbblky-
sbply, rthy lstr, vcalc
MRL: m-dkgy, sft-mfirm, sbblky-sbply,
rthy, stri, arg, org/calc mtx, mod calc

CHK: lt-mgy, mot, sft-sl firm, arg, sbblky-
sbply, rthy lstr, vcalc
MRL: m-dkgy, sft-mfirm, sbblky-sbply,
rthy, stri, arg, org/calc mtx, mod calc

CHK: lt-mgy, mot, sft-sl firm, arg, sbblky-
sbply, rthy lstr, vcalc
MRL: m-dkgy, sft-mfirm, sbblky-sbply,
rthy, stri, arg, org/calc mtx, mod calc

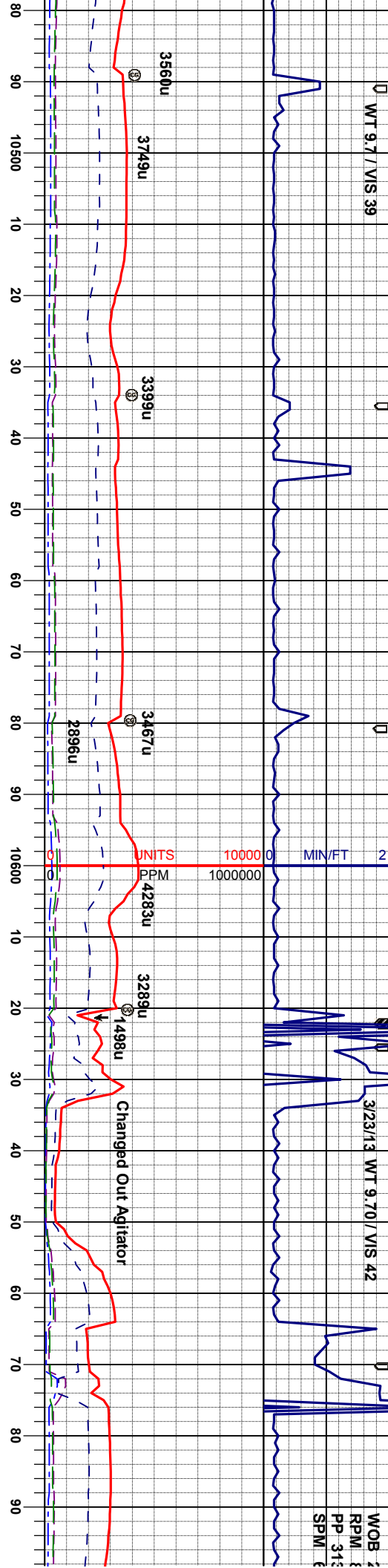
CHK: lt-mgy, mot, sft-sl
sbply, rthy lstr, vcalc
MRL: m-dkgy, sft-mfirm,
rthy, stri, arg, org/calc mt



WT 9.7 / VIS 39

3/23/13 WT 9.70 / VIS 42

WOB 2
RPM 1
PP 313
SPM 1

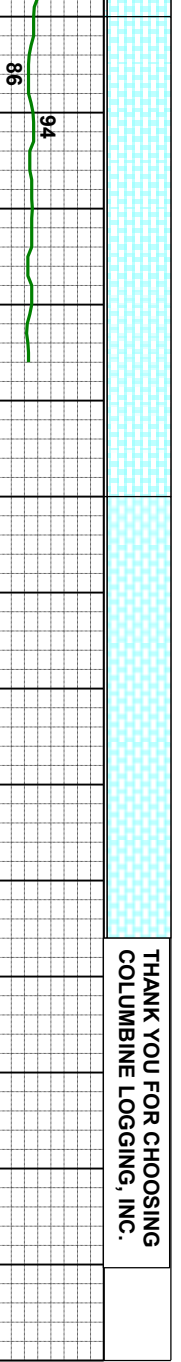
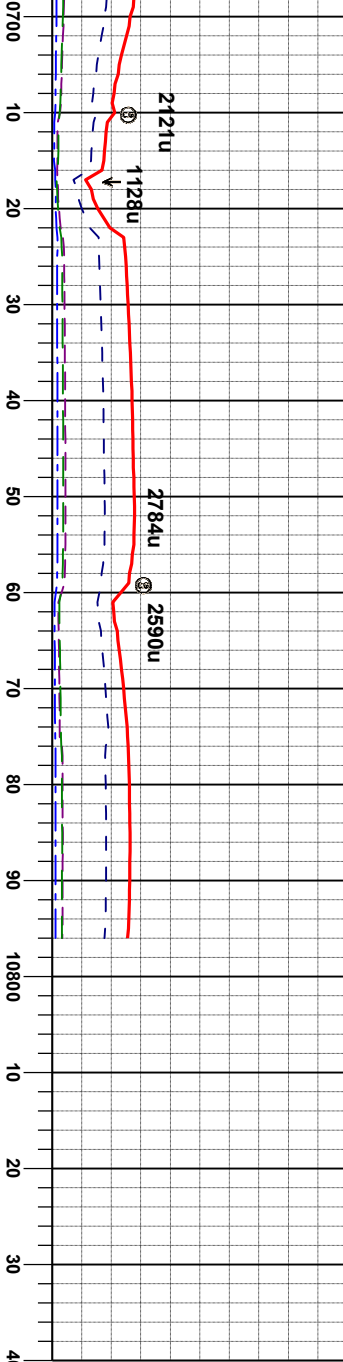
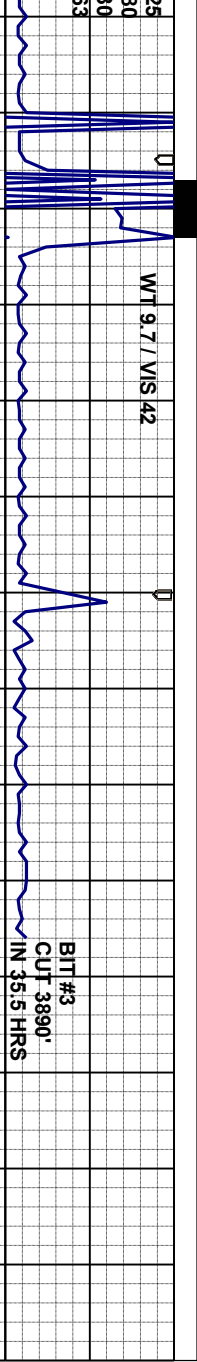


MD 10524'
INC 89.6°
AZI 358.5°
TVD 6504.3'

MD 10614'
INC 91.5°
AZI 359.2°
TVD 6503.4'

firm, arg, sbblky-sbblky-sbply, rthy lstr, vcalc	CHK: lt-mgy, mot, sft-sl firm, arg, sbblky-sbply, rthy lstr, vcalc	CHK: lt-mgy, mot, sft-sl firm, arg, sbblky-sbply, rthy lstr, vcalc	CHK: lt-mgy, mot, sft-sl firm, arg, sbblky-sbply, rthy lstr, vcalc
MR.L: m-dkgy, sft-mfirm, sbblky-sbply, rthy, stri, arg, org/calc mtb, mod calc	MR.L: m-dkgy, sft-mfirm, sbblky-sbply, rthy, stri, arg, org/calc mtb, mod calc	MR.L: m-dkgy, sft-mfirm, sbblky-sbply, rthy, stri, arg, org/calc mtb, mod calc	MR.L: m-dkgy, sft-mfirm, sbblky-sbply, rthy, stri, arg, org/calc mtb, mod calc





MD 10740'
INC 89.2°
AZI 358.4°
TVD 6502.7'

Bit Projection
MD 10796'
INC 89.2°
AZI 358.4°
TVD 6503.5'

TD 10796'MD
@ 0219 HRS, 3/23/13

CHK: lt- mgy, mot, sft-sl firm, arg, sbblky-
sblply, rthy lst, vcalc
MRL: m-dkgy, sft- mfirm, sbblky-sblply,
rthy, stri, arg, org/calc mtx, mod calc

CHK: lt- mgy, mot, sft-sl firm, arg, sbblky-
sblply, rthy lst, vcalc
MRL: m-dkgy, sft- mfirm, sbblky-sblply,
rthy, stri, arg, org/calc mtx, mod calc

THANK YOU FOR CHOOSING
COLUMBINE LOGGING, INC.

