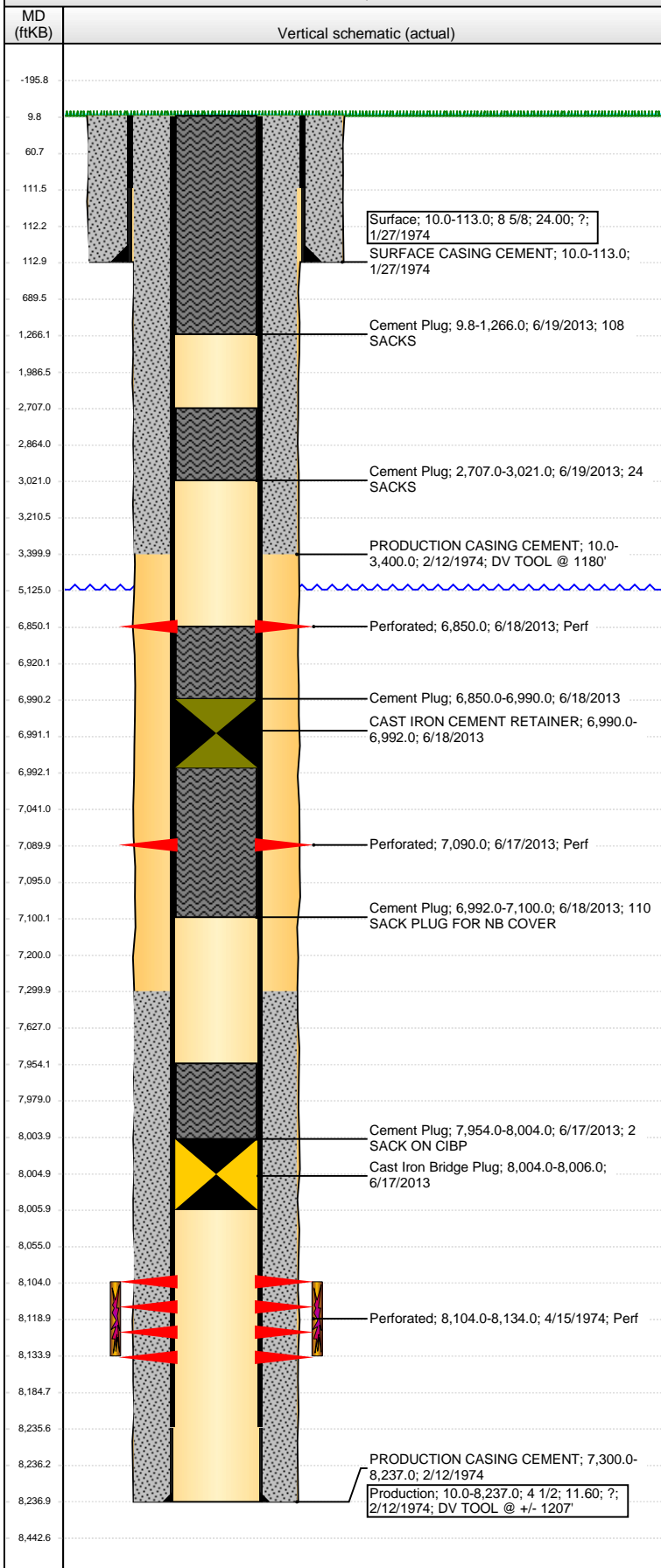


Well Name: CASE 01

VERTICAL - ORIGINAL HOLE, 7/9/2013 8:59:59 AM



Well Header				
API	Business Unit	District	Well Config	
05-001-06790	WATTENBERG	15	VERTICAL	
Original KB Elevation (ft)	KB - GL / MSL (ftKB)	Spud Date	P & A Date	
5,043.00	10.00	1/27/1974	6/20/2013	
Comment				
SKETCHY DATA, MISSING MAJORITY OF DRILL REPORTS DV TOOL @ +/- 1207'				
Directions To Well				
Congressional Location				
Quarter 1	Quarter 2	Quarter 3	Quarter 4	Section
		NE	NE	17
Township		Twonshp N...		Range
1 S				66 W
Bottom Hole Location				
North-South Distance (ft)		From N or S Line		East-West Distance (ft)
				From E or W Line
Plug Back Total Depths				
Date	Depth (ftKB)	Method		Com
Wellbore Sections				
Section Des	Size (in)	Act Top (ftKB)	Act Btm (ftKB)	
SURFACE	12 1/4	10.0	113.0	
PRODUCTION	7 7/8	113.0	8,237.0	
Zone Statuses				
Zone Name	Status Date	Status	Job	
J SAND	4/27/1974	PR	DRILLING/COMPLETION - ORIGINAL, 1/27/1974 00:00	
J SAND	6/20/2013	P&A	ABANDON WELL, 6/13/2013 06:00	
Casing Strings				
Surface, 113.0ftKB				
Casing Description	Run Date	OD (in)	Wt/Len (l...)	Grade
Surface	1/27/1974	8 5/8	24.00	?
Top (ftKB)	MD (ftKB)			
10.0	113.0			
Production, 8,237.0ftKB				
Casing Description	Run Date	OD (in)	Wt/Len (l...)	Grade
Production	2/12/1974	4 1/2	11.60	?
Top (ftKB)	MD (ftKB)			
10.0	8,237.0			
Cement				
Description	Top Depth (ftKB)	Bottom Depth (ftKB)		
SURFACE CASING CEMENT	10.0	113.0		
Description	Top Depth (ftKB)	Bottom Depth (ftKB)		
PRODUCTION CASING CEMENT	10.0	3,400.0		
Description	Top Depth (ftKB)	Bottom Depth (ftKB)		
PRODUCTION CASING CEMENT	7,300.0	8,237.0		
Description	Top Depth (ftKB)	Bottom Depth (ftKB)		
Cement Plug	7,954.0	8,004.0		
Description	Top Depth (ftKB)	Bottom Depth (ftKB)		
Cement Plug	6,850.0	6,990.0		
Description	Top Depth (ftKB)	Bottom Depth (ftKB)		
Cement Plug	6,992.0	7,100.0		
Description	Top Depth (ftKB)	Bottom Depth (ftKB)		
Cement Plug	9.8	1,266.0		
Description	Top Depth (ftKB)	Bottom Depth (ftKB)		
Cement Plug	2,707.0	3,021.0		
Tubing Components				
Item Des	OD (in)	Wt (lb/ft)	Grade	Jts
Perforation Data				
Zone	Bnch/St g	Entered Shot Total	Top (ftKB)	Btm (ftKB)
		2	6,850.00	6,850.00
		2	7,090.00	7,090.00
J SAND, ORIGINAL HOLE		90	8,104.00	8,134.00
Date	Zone	Primary Job Type		
4/15/1974	J SAND, ORIGINAL HOLE	DRILLING/COMPLETION - ORIGINAL		
Technical Result		Tech Result Details		Tech Result Note
Comment				
Other In Hole				
Run Date	Des	OD (in)	Top (ftKB)	Btm (ftKB)
6/17/2013	Cast Iron Bridge Plug	3.99	8,004.0	8,006.0

Well Name: CASE 01

VERTICAL - ORIGINAL HOLE, 7/9/2013 9:00:00 AM

## Other In Hole

Run Date	Des	OD (in)	Top (ftKB)	Btm (ftKB)
6/18/2013	CAST IRON CEMENT RETAINER	3.99	6,990.0	6,992.0

## Logs

Date	Type	Top (ftKB)	Btm (ftKB)
2/12/1974	INDUCTION	103.0	8,180.0
6/16/2013	CBL/CCL/GR	9.1	7,500.0
6/16/2013	GYRO	9.1	8,180.0

