

# PETROLEUM DEVELOPMENT CORP Weld County CO

## Well Name: Maxey 24Q-112

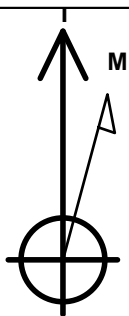
Surface Location: Maxey 24Q-HZ Pad Sec.24-T5N-R65W  
North American Datum 1983 , US State Plane 1983 , Colorado Northern Zone

Ground Elevation: 4635.0

+N/-S +E/-W Northing Easting Latitude Longitude Slot  
0.0 0.0 1381915.93 3247776.49 40.378350 -104.610620  
RKB - 15' WELL @ 4650.0ft (RKB - 15')

## WELLBORE TARGET DETAILS

Name	TVD	+N/-S	+E/-W	Shape Point
BHL 408'FSL, 2140'FWL, SEC.19	6600.0	44.2	4560.9	Point



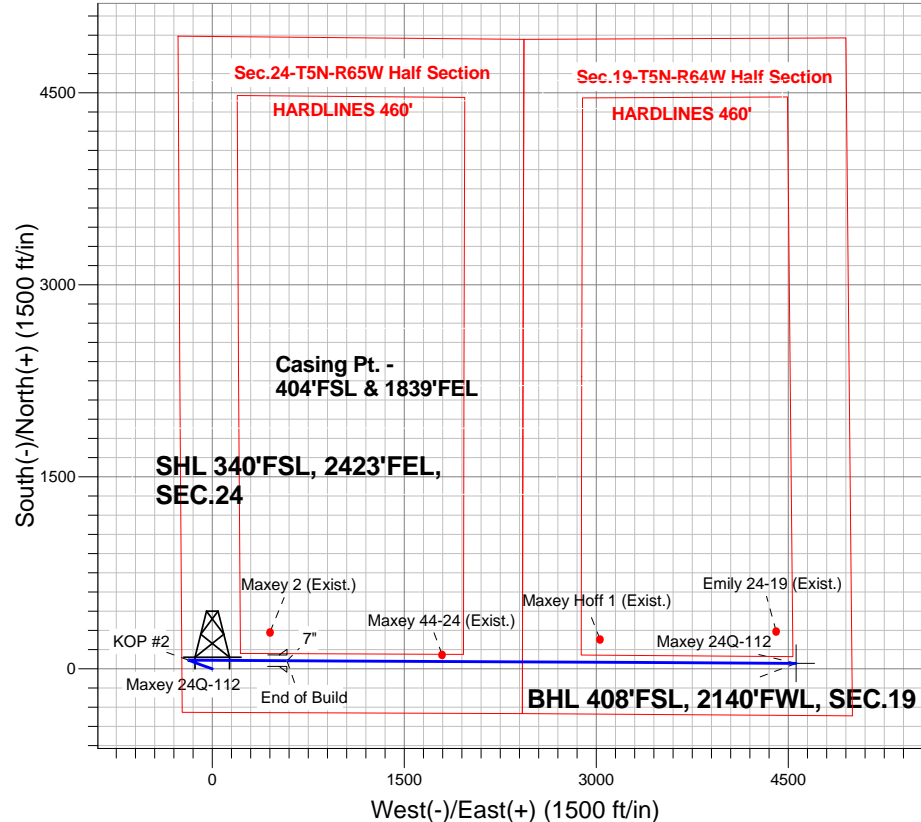
Azimuths to True North  
Magnetic North: 8.54°

Magnetic Field  
Strength: 52952.8nT  
Dip Angle: 67.00°  
Date: 3/18/2013  
Model: IGRF2010

## ANNOTATIONS

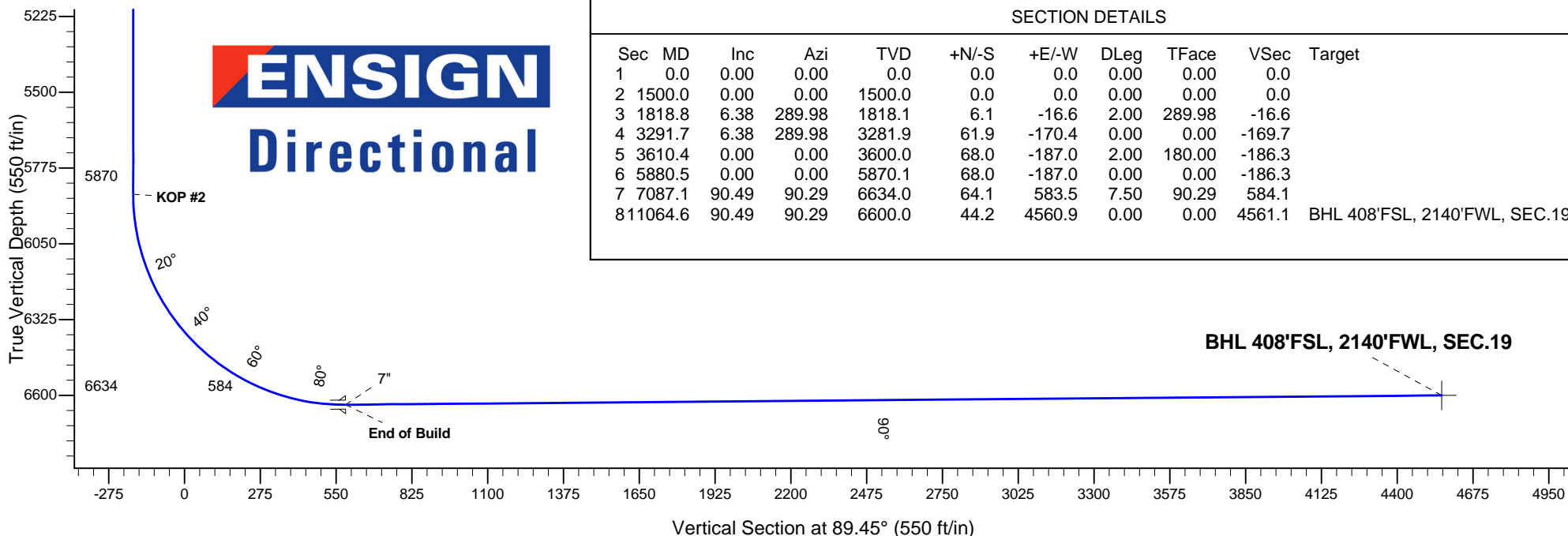
TVD	MD	Annotation
1500.0	1500.0	KOP #1
5870.1	5880.5	KOP #2
6634.0	7087.1	End of Build

Maxey 24Q-HZ Pad Sec.24-T5N-R65W  
Maxey 24Q-112  
Plan #1 (3-07-13)



# ENSIGN

## Directional



## SECTION DETAILS

Sec	MD	Inc	Azi	TVD	+N/-S	+E/-W	DLeg	TFace	VSec	Target
1	0.0	0.00	0.00	0.0	0.0	0.0	0.00	0.00	0.0	
2	1500.0	0.00	0.00	1500.0	0.0	0.0	0.00	0.00	0.0	
3	1818.8	6.38	289.98	1818.1	6.1	-16.6	2.00	289.98	-16.6	
4	3291.7	6.38	289.98	3281.9	61.9	-170.4	0.00	0.00	-169.7	
5	3610.4	0.00	0.00	3600.0	68.0	-187.0	2.00	180.00	-186.3	
6	5880.5	0.00	0.00	5870.1	68.0	-187.0	0.00	0.00	-186.3	
7	7087.1	90.49	90.29	6634.0	64.1	583.5	7.50	90.29	584.1	
8	1064.6	90.49	90.29	6600.0	44.2	4560.9	0.00	0.00	4561.1	BHL 408'FSL, 2140'FWL, SEC.19



## **Directional**

# **PETROLEUM DEVELOPMENT CORP Weld County CO**

**SEC.24-T5N-R65W**

**Maxey 24Q-HZ Pad Sec.24-T5N-R65W**

**Maxey 24Q-112**

**Wellbore #1**

**Plan: Plan #1 (3-07-13)**

## **Standard Planning Report**

**18 March, 2013**

<b>Database:</b>	Landmark	<b>Local Co-ordinate Reference:</b>	Well Maxey 24Q-112
<b>Company:</b>	PETROLEUM DEVELOPMENT CORP Weld County CO	<b>TVD Reference:</b>	WELL @ 4650.0ft (RKB - 15')
<b>Project:</b>	SEC.24-T5N-R65W	<b>MD Reference:</b>	WELL @ 4650.0ft (RKB - 15')
<b>Site:</b>	Maxey 24Q-HZ Pad Sec.24-T5N-R65W	<b>North Reference:</b>	True
<b>Well:</b>	Maxey 24Q-112	<b>Survey Calculation Method:</b>	Minimum Curvature
<b>Wellbore:</b>	Wellbore #1		
<b>Design:</b>	Plan #1 (3-07-13)		

<b>Project</b>	SEC.24-T5N-R65W, Weld County, Colorado		
<b>Map System:</b>	US State Plane 1983	<b>System Datum:</b>	Mean Sea Level
<b>Geo Datum:</b>	North American Datum 1983		Using Well Reference Point
<b>Map Zone:</b>	Colorado Northern Zone		Using geodetic scale factor

Site						Maxey 24Q-HZ Pad Sec.24-T5N-R65W											
<b>Site Position:</b>						<b>Northing:</b>			1,381,915.64 ft			<b>Latitude:</b>			40.378350		
<b>From:</b>			Lat/Long			<b>Easting:</b>			3,247,745.85 ft			<b>Longitude:</b>			-104.610730		
<b>Position Uncertainty:</b>			0.0 ft			<b>Slot Radius:</b>			"			<b>Grid Convergence:</b>			0.57 °		

Well	Maxey 24Q-112					
Well Position	+N-S	0.0 ft	Northing:	1,381,915.93 ft	Latitude:	40.378350
	+E-W	30.6 ft	Easting:	3,247,776.49 ft	Longitude:	-104.610620
Position Uncertainty		0.0 ft	Wellhead Elevation:	ft	Ground Level:	4,635.0 ft

<b>Wellbore</b>	Wellbore #1				
<b>Magnetics</b>	<b>Model Name</b>	<b>Sample Date</b>	<b>Declination (°)</b>	<b>Dip Angle (°)</b>	<b>Field Strength (nT)</b>
	IGRF2010	3/18/2013	8.54	67.00	52,953

<b>Design</b>	Plan #1 (3-07-13)			
<b>Audit Notes:</b>				
<b>Version:</b>	<b>Phase:</b>	PROTOTYPE	<b>Tie On Depth:</b>	0.0
<b>Vertical Section:</b>	<b>Depth From (TVD) (ft)</b>	<b>+N/-S (ft)</b>	<b>+E/-W (ft)</b>	<b>Direction (°)</b>
	0.0	0.0	0.0	89.45

<b>Plan Sections</b>										
Measured Depth (ft)	Inclination (°)	Azimuth (°)	Vertical Depth (ft)	+N/-S (ft)	+E/-W (ft)	Dogleg Rate (°/100ft)	Build Rate (°/100ft)	Turn Rate (°/100ft)	TFO (°)	Target
0.0	0.00	0.00	0.0	0.0	0.0	0.00	0.00	0.00	0.00	
1,500.0	0.00	0.00	1,500.0	0.0	0.0	0.00	0.00	0.00	0.00	
1,818.8	6.38	289.98	1,818.1	6.1	-16.6	2.00	2.00	0.00	289.98	
3,291.7	6.38	289.98	3,281.9	61.9	-170.4	0.00	0.00	0.00	0.00	
3,610.4	0.00	0.00	3,600.0	68.0	-187.0	2.00	-2.00	0.00	180.00	
5,880.5	0.00	0.00	5,870.1	68.0	-187.0	0.00	0.00	0.00	0.00	
7,087.1	90.49	90.29	6,634.0	64.1	583.5	7.50	7.50	0.00	90.29	
11,064.6	90.49	90.29	6,600.0	44.2	4,560.9	0.00	0.00	0.00	0.00	BHL 408'FSL, 2140

<b>Database:</b>	Landmark	<b>Local Co-ordinate Reference:</b>	Well Maxey 24Q-112
<b>Company:</b>	PETROLEUM DEVELOPMENT CORP Weld County CO	<b>TVD Reference:</b>	WELL @ 4650.0ft (RKB - 15')
<b>Project:</b>	SEC.24-T5N-R65W	<b>MD Reference:</b>	WELL @ 4650.0ft (RKB - 15')
<b>Site:</b>	Maxey 24Q-HZ Pad Sec.24-T5N-R65W	<b>North Reference:</b>	True
<b>Well:</b>	Maxey 24Q-112	<b>Survey Calculation Method:</b>	Minimum Curvature
<b>Wellbore:</b>	Wellbore #1		
<b>Design:</b>	Plan #1 (3-07-13)		

Planned Survey

Measured Depth (ft)	Inclination (°)	Azimuth (°)	Vertical Depth (ft)	+N/-S (ft)	+E/-W (ft)	Vertical Section (ft)	Dogleg Rate (°/100ft)	Build Rate (°/100ft)	Turn Rate (°/100ft)
0.0	0.00	0.00	0.0	0.0	0.0	0.0	0.00	0.00	0.00
40.0	0.00	0.00	40.0	0.0	0.0	0.0	0.00	0.00	0.00
80.0	0.00	0.00	80.0	0.0	0.0	0.0	0.00	0.00	0.00
120.0	0.00	0.00	120.0	0.0	0.0	0.0	0.00	0.00	0.00
160.0	0.00	0.00	160.0	0.0	0.0	0.0	0.00	0.00	0.00
200.0	0.00	0.00	200.0	0.0	0.0	0.0	0.00	0.00	0.00
240.0	0.00	0.00	240.0	0.0	0.0	0.0	0.00	0.00	0.00
280.0	0.00	0.00	280.0	0.0	0.0	0.0	0.00	0.00	0.00
320.0	0.00	0.00	320.0	0.0	0.0	0.0	0.00	0.00	0.00
360.0	0.00	0.00	360.0	0.0	0.0	0.0	0.00	0.00	0.00
400.0	0.00	0.00	400.0	0.0	0.0	0.0	0.00	0.00	0.00
440.0	0.00	0.00	440.0	0.0	0.0	0.0	0.00	0.00	0.00
480.0	0.00	0.00	480.0	0.0	0.0	0.0	0.00	0.00	0.00
520.0	0.00	0.00	520.0	0.0	0.0	0.0	0.00	0.00	0.00
560.0	0.00	0.00	560.0	0.0	0.0	0.0	0.00	0.00	0.00
600.0	0.00	0.00	600.0	0.0	0.0	0.0	0.00	0.00	0.00
640.0	0.00	0.00	640.0	0.0	0.0	0.0	0.00	0.00	0.00
680.0	0.00	0.00	680.0	0.0	0.0	0.0	0.00	0.00	0.00
720.0	0.00	0.00	720.0	0.0	0.0	0.0	0.00	0.00	0.00
760.0	0.00	0.00	760.0	0.0	0.0	0.0	0.00	0.00	0.00
800.0	0.00	0.00	800.0	0.0	0.0	0.0	0.00	0.00	0.00
840.0	0.00	0.00	840.0	0.0	0.0	0.0	0.00	0.00	0.00
880.0	0.00	0.00	880.0	0.0	0.0	0.0	0.00	0.00	0.00
920.0	0.00	0.00	920.0	0.0	0.0	0.0	0.00	0.00	0.00
960.0	0.00	0.00	960.0	0.0	0.0	0.0	0.00	0.00	0.00
1,000.0	0.00	0.00	1,000.0	0.0	0.0	0.0	0.00	0.00	0.00
1,040.0	0.00	0.00	1,040.0	0.0	0.0	0.0	0.00	0.00	0.00
1,080.0	0.00	0.00	1,080.0	0.0	0.0	0.0	0.00	0.00	0.00
1,120.0	0.00	0.00	1,120.0	0.0	0.0	0.0	0.00	0.00	0.00
1,160.0	0.00	0.00	1,160.0	0.0	0.0	0.0	0.00	0.00	0.00
1,200.0	0.00	0.00	1,200.0	0.0	0.0	0.0	0.00	0.00	0.00
1,240.0	0.00	0.00	1,240.0	0.0	0.0	0.0	0.00	0.00	0.00
1,280.0	0.00	0.00	1,280.0	0.0	0.0	0.0	0.00	0.00	0.00
1,320.0	0.00	0.00	1,320.0	0.0	0.0	0.0	0.00	0.00	0.00
1,360.0	0.00	0.00	1,360.0	0.0	0.0	0.0	0.00	0.00	0.00
1,400.0	0.00	0.00	1,400.0	0.0	0.0	0.0	0.00	0.00	0.00
1,440.0	0.00	0.00	1,440.0	0.0	0.0	0.0	0.00	0.00	0.00
1,480.0	0.00	0.00	1,480.0	0.0	0.0	0.0	0.00	0.00	0.00
1,500.0	0.00	0.00	1,500.0	0.0	0.0	0.0	0.00	0.00	0.00
<b>KOP #1</b>									
1,520.0	0.40	289.98	1,520.0	0.0	-0.1	-0.1	2.00	2.00	0.00
1,560.0	1.20	289.98	1,560.0	0.2	-0.6	-0.6	2.00	2.00	0.00
1,600.0	2.00	289.98	1,600.0	0.6	-1.6	-1.6	2.00	2.00	0.00
1,640.0	2.80	289.98	1,639.9	1.2	-3.2	-3.2	2.00	2.00	0.00
1,680.0	3.60	289.98	1,679.9	1.9	-5.3	-5.3	2.00	2.00	0.00
1,720.0	4.40	289.98	1,719.8	2.9	-7.9	-7.9	2.00	2.00	0.00
1,760.0	5.20	289.98	1,759.6	4.0	-11.1	-11.0	2.00	2.00	0.00
1,800.0	6.00	289.98	1,799.5	5.4	-14.7	-14.7	2.00	2.00	0.00
1,818.8	6.38	289.98	1,818.1	6.1	-16.6	-16.6	2.00	2.00	0.00
1,840.0	6.38	289.98	1,839.2	6.9	-18.9	-18.8	0.00	0.00	0.00
1,880.0	6.38	289.98	1,879.0	8.4	-23.0	-23.0	0.00	0.00	0.00
1,920.0	6.38	289.98	1,918.7	9.9	-27.2	-27.1	0.00	0.00	0.00
1,960.0	6.38	289.98	1,958.5	11.4	-31.4	-31.3	0.00	0.00	0.00

<b>Database:</b>	Landmark	<b>Local Co-ordinate Reference:</b>	Well Maxey 24Q-112
<b>Company:</b>	PETROLEUM DEVELOPMENT CORP Weld County CO	<b>TVD Reference:</b>	WELL @ 4650.0ft (RKB - 15')
<b>Project:</b>	SEC.24-T5N-R65W	<b>MD Reference:</b>	WELL @ 4650.0ft (RKB - 15')
<b>Site:</b>	Maxey 24Q-HZ Pad Sec.24-T5N-R65W	<b>North Reference:</b>	True
<b>Well:</b>	Maxey 24Q-112	<b>Survey Calculation Method:</b>	Minimum Curvature
<b>Wellbore:</b>	Wellbore #1		
<b>Design:</b>	Plan #1 (3-07-13)		

Planned Survey										
Measured Depth (ft)	Inclination (°)	Azimuth (°)	Vertical Depth (ft)	+N/-S (ft)	+E/-W (ft)	Vertical Section (ft)	Dogleg Rate (°/100ft)	Build Rate (°/100ft)	Turn Rate (°/100ft)	
2,000.0	6.38	289.98	1,998.2	12.9	-35.6	-35.4	0.00	0.00	0.00	
2,040.0	6.38	289.98	2,038.0	14.4	-39.7	-39.6	0.00	0.00	0.00	
2,080.0	6.38	289.98	2,077.7	16.0	-43.9	-43.8	0.00	0.00	0.00	
2,120.0	6.38	289.98	2,117.5	17.5	-48.1	-47.9	0.00	0.00	0.00	
2,160.0	6.38	289.98	2,157.2	19.0	-52.3	-52.1	0.00	0.00	0.00	
2,200.0	6.38	289.98	2,197.0	20.5	-56.4	-56.2	0.00	0.00	0.00	
2,240.0	6.38	289.98	2,236.7	22.0	-60.6	-60.4	0.00	0.00	0.00	
2,280.0	6.38	289.98	2,276.5	23.6	-64.8	-64.5	0.00	0.00	0.00	
2,320.0	6.38	289.98	2,316.2	25.1	-69.0	-68.7	0.00	0.00	0.00	
2,360.0	6.38	289.98	2,356.0	26.6	-73.1	-72.9	0.00	0.00	0.00	
2,400.0	6.38	289.98	2,395.7	28.1	-77.3	-77.0	0.00	0.00	0.00	
2,440.0	6.38	289.98	2,435.5	29.6	-81.5	-81.2	0.00	0.00	0.00	
2,480.0	6.38	289.98	2,475.3	31.1	-85.7	-85.3	0.00	0.00	0.00	
2,520.0	6.38	289.98	2,515.0	32.7	-89.8	-89.5	0.00	0.00	0.00	
2,560.0	6.38	289.98	2,554.8	34.2	-94.0	-93.7	0.00	0.00	0.00	
2,600.0	6.38	289.98	2,594.5	35.7	-98.2	-97.8	0.00	0.00	0.00	
2,640.0	6.38	289.98	2,634.3	37.2	-102.3	-102.0	0.00	0.00	0.00	
2,680.0	6.38	289.98	2,674.0	38.7	-106.5	-106.1	0.00	0.00	0.00	
2,720.0	6.38	289.98	2,713.8	40.3	-110.7	-110.3	0.00	0.00	0.00	
2,760.0	6.38	289.98	2,753.5	41.8	-114.9	-114.5	0.00	0.00	0.00	
2,800.0	6.38	289.98	2,793.3	43.3	-119.0	-118.6	0.00	0.00	0.00	
2,840.0	6.38	289.98	2,833.0	44.8	-123.2	-122.8	0.00	0.00	0.00	
2,880.0	6.38	289.98	2,872.8	46.3	-127.4	-126.9	0.00	0.00	0.00	
2,920.0	6.38	289.98	2,912.5	47.8	-131.6	-131.1	0.00	0.00	0.00	
2,960.0	6.38	289.98	2,952.3	49.4	-135.7	-135.3	0.00	0.00	0.00	
3,000.0	6.38	289.98	2,992.0	50.9	-139.9	-139.4	0.00	0.00	0.00	
3,040.0	6.38	289.98	3,031.8	52.4	-144.1	-143.6	0.00	0.00	0.00	
3,080.0	6.38	289.98	3,071.5	53.9	-148.3	-147.7	0.00	0.00	0.00	
3,120.0	6.38	289.98	3,111.3	55.4	-152.4	-151.9	0.00	0.00	0.00	
3,160.0	6.38	289.98	3,151.0	56.9	-156.6	-156.1	0.00	0.00	0.00	
3,200.0	6.38	289.98	3,190.8	58.5	-160.8	-160.2	0.00	0.00	0.00	
3,240.0	6.38	289.98	3,230.6	60.0	-165.0	-164.4	0.00	0.00	0.00	
3,280.0	6.38	289.98	3,270.3	61.5	-169.1	-168.5	0.00	0.00	0.00	
3,291.7	6.38	289.98	3,281.9	61.9	-170.4	-169.7	0.00	0.00	0.00	
3,320.0	5.81	289.98	3,310.1	63.0	-173.2	-172.6	2.00	-2.00	0.00	
3,360.0	5.01	289.98	3,349.9	64.3	-176.7	-176.1	2.00	-2.00	0.00	
3,400.0	4.21	289.98	3,389.8	65.4	-179.7	-179.1	2.00	-2.00	0.00	
3,440.0	3.41	289.98	3,429.7	66.3	-182.2	-181.6	2.00	-2.00	0.00	
3,480.0	2.61	289.98	3,469.6	67.0	-184.2	-183.6	2.00	-2.00	0.00	
3,520.0	1.81	289.98	3,509.6	67.5	-185.7	-185.0	2.00	-2.00	0.00	
3,560.0	1.01	289.98	3,549.6	67.8	-186.6	-185.9	2.00	-2.00	0.00	
3,600.0	0.21	289.98	3,589.6	68.0	-187.0	-186.3	2.00	-2.00	0.00	
3,610.4	0.00	0.00	3,600.0	68.0	-187.0	-186.3	2.00	-2.00	0.00	
3,640.0	0.00	0.00	3,629.6	68.0	-187.0	-186.3	0.00	0.00	0.00	
3,680.0	0.00	0.00	3,669.6	68.0	-187.0	-186.3	0.00	0.00	0.00	
3,720.0	0.00	0.00	3,709.6	68.0	-187.0	-186.3	0.00	0.00	0.00	
3,760.0	0.00	0.00	3,749.6	68.0	-187.0	-186.3	0.00	0.00	0.00	
3,800.0	0.00	0.00	3,789.6	68.0	-187.0	-186.3	0.00	0.00	0.00	
3,840.0	0.00	0.00	3,829.6	68.0	-187.0	-186.3	0.00	0.00	0.00	
3,880.0	0.00	0.00	3,869.6	68.0	-187.0	-186.3	0.00	0.00	0.00	
3,920.0	0.00	0.00	3,909.6	68.0	-187.0	-186.3	0.00	0.00	0.00	
3,960.0	0.00	0.00	3,949.6	68.0	-187.0	-186.3	0.00	0.00	0.00	
4,000.0	0.00	0.00	3,989.6	68.0	-187.0	-186.3	0.00	0.00	0.00	

<b>Database:</b>	Landmark	<b>Local Co-ordinate Reference:</b>	Well Maxey 24Q-112
<b>Company:</b>	PETROLEUM DEVELOPMENT CORP Weld County CO	<b>TVD Reference:</b>	WELL @ 4650.0ft (RKB - 15')
<b>Project:</b>	SEC.24-T5N-R65W	<b>MD Reference:</b>	WELL @ 4650.0ft (RKB - 15')
<b>Site:</b>	Maxey 24Q-HZ Pad Sec.24-T5N-R65W	<b>North Reference:</b>	True
<b>Well:</b>	Maxey 24Q-112	<b>Survey Calculation Method:</b>	Minimum Curvature
<b>Wellbore:</b>	Wellbore #1		
<b>Design:</b>	Plan #1 (3-07-13)		

Planned Survey									
Measured Depth (ft)	Inclination (°)	Azimuth (°)	Vertical Depth (ft)	+N/-S (ft)	+E/-W (ft)	Vertical Section (ft)	Dogleg Rate (°/100ft)	Build Rate (°/100ft)	Turn Rate (°/100ft)
4,040.0	0.00	0.00	4,029.6	68.0	-187.0	-186.3	0.00	0.00	0.00
4,080.0	0.00	0.00	4,069.6	68.0	-187.0	-186.3	0.00	0.00	0.00
4,120.0	0.00	0.00	4,109.6	68.0	-187.0	-186.3	0.00	0.00	0.00
4,160.0	0.00	0.00	4,149.6	68.0	-187.0	-186.3	0.00	0.00	0.00
4,200.0	0.00	0.00	4,189.6	68.0	-187.0	-186.3	0.00	0.00	0.00
4,240.0	0.00	0.00	4,229.6	68.0	-187.0	-186.3	0.00	0.00	0.00
4,280.0	0.00	0.00	4,269.6	68.0	-187.0	-186.3	0.00	0.00	0.00
4,320.0	0.00	0.00	4,309.6	68.0	-187.0	-186.3	0.00	0.00	0.00
4,360.0	0.00	0.00	4,349.6	68.0	-187.0	-186.3	0.00	0.00	0.00
4,400.0	0.00	0.00	4,389.6	68.0	-187.0	-186.3	0.00	0.00	0.00
4,440.0	0.00	0.00	4,429.6	68.0	-187.0	-186.3	0.00	0.00	0.00
4,480.0	0.00	0.00	4,469.6	68.0	-187.0	-186.3	0.00	0.00	0.00
4,520.0	0.00	0.00	4,509.6	68.0	-187.0	-186.3	0.00	0.00	0.00
4,560.0	0.00	0.00	4,549.6	68.0	-187.0	-186.3	0.00	0.00	0.00
4,600.0	0.00	0.00	4,589.6	68.0	-187.0	-186.3	0.00	0.00	0.00
4,640.0	0.00	0.00	4,629.6	68.0	-187.0	-186.3	0.00	0.00	0.00
4,680.0	0.00	0.00	4,669.6	68.0	-187.0	-186.3	0.00	0.00	0.00
4,720.0	0.00	0.00	4,709.6	68.0	-187.0	-186.3	0.00	0.00	0.00
4,760.0	0.00	0.00	4,749.6	68.0	-187.0	-186.3	0.00	0.00	0.00
4,800.0	0.00	0.00	4,789.6	68.0	-187.0	-186.3	0.00	0.00	0.00
4,840.0	0.00	0.00	4,829.6	68.0	-187.0	-186.3	0.00	0.00	0.00
4,880.0	0.00	0.00	4,869.6	68.0	-187.0	-186.3	0.00	0.00	0.00
4,920.0	0.00	0.00	4,909.6	68.0	-187.0	-186.3	0.00	0.00	0.00
4,960.0	0.00	0.00	4,949.6	68.0	-187.0	-186.3	0.00	0.00	0.00
5,000.0	0.00	0.00	4,989.6	68.0	-187.0	-186.3	0.00	0.00	0.00
5,040.0	0.00	0.00	5,029.6	68.0	-187.0	-186.3	0.00	0.00	0.00
5,080.0	0.00	0.00	5,069.6	68.0	-187.0	-186.3	0.00	0.00	0.00
5,120.0	0.00	0.00	5,109.6	68.0	-187.0	-186.3	0.00	0.00	0.00
5,160.0	0.00	0.00	5,149.6	68.0	-187.0	-186.3	0.00	0.00	0.00
5,200.0	0.00	0.00	5,189.6	68.0	-187.0	-186.3	0.00	0.00	0.00
5,240.0	0.00	0.00	5,229.6	68.0	-187.0	-186.3	0.00	0.00	0.00
5,280.0	0.00	0.00	5,269.6	68.0	-187.0	-186.3	0.00	0.00	0.00
5,320.0	0.00	0.00	5,309.6	68.0	-187.0	-186.3	0.00	0.00	0.00
5,360.0	0.00	0.00	5,349.6	68.0	-187.0	-186.3	0.00	0.00	0.00
5,400.0	0.00	0.00	5,389.6	68.0	-187.0	-186.3	0.00	0.00	0.00
5,440.0	0.00	0.00	5,429.6	68.0	-187.0	-186.3	0.00	0.00	0.00
5,480.0	0.00	0.00	5,469.6	68.0	-187.0	-186.3	0.00	0.00	0.00
5,520.0	0.00	0.00	5,509.6	68.0	-187.0	-186.3	0.00	0.00	0.00
5,560.0	0.00	0.00	5,549.6	68.0	-187.0	-186.3	0.00	0.00	0.00
5,600.0	0.00	0.00	5,589.6	68.0	-187.0	-186.3	0.00	0.00	0.00
5,640.0	0.00	0.00	5,629.6	68.0	-187.0	-186.3	0.00	0.00	0.00
5,680.0	0.00	0.00	5,669.6	68.0	-187.0	-186.3	0.00	0.00	0.00
5,720.0	0.00	0.00	5,709.6	68.0	-187.0	-186.3	0.00	0.00	0.00
5,760.0	0.00	0.00	5,749.6	68.0	-187.0	-186.3	0.00	0.00	0.00
5,800.0	0.00	0.00	5,789.6	68.0	-187.0	-186.3	0.00	0.00	0.00
5,840.0	0.00	0.00	5,829.6	68.0	-187.0	-186.3	0.00	0.00	0.00
5,880.0	0.00	0.00	5,869.6	68.0	-187.0	-186.3	0.00	0.00	0.00
5,880.5	0.00	0.00	5,870.1	68.0	-187.0	-186.3	0.00	0.00	0.00
<b>KOP #2</b>									
5,920.0	2.96	90.29	5,909.6	68.0	-186.0	-185.3	7.50	7.50	0.00
5,960.0	5.96	90.29	5,949.4	68.0	-182.9	-182.2	7.50	7.50	0.00
6,000.0	8.96	90.29	5,989.1	68.0	-177.7	-177.0	7.50	7.50	0.00
6,040.0	11.96	90.29	6,028.4	67.9	-170.4	-169.7	7.50	7.50	0.00

<b>Database:</b>	Landmark	<b>Local Co-ordinate Reference:</b>	Well Maxey 24Q-112
<b>Company:</b>	PETROLEUM DEVELOPMENT CORP Weld County CO	<b>TVD Reference:</b>	WELL @ 4650.0ft (RKB - 15')
<b>Project:</b>	SEC.24-T5N-R65W	<b>MD Reference:</b>	WELL @ 4650.0ft (RKB - 15')
<b>Site:</b>	Maxey 24Q-HZ Pad Sec.24-T5N-R65W	<b>North Reference:</b>	True
<b>Well:</b>	Maxey 24Q-112	<b>Survey Calculation Method:</b>	Minimum Curvature
<b>Wellbore:</b>	Wellbore #1		
<b>Design:</b>	Plan #1 (3-07-13)		

Planned Survey									
Measured Depth (ft)	Inclination (°)	Azimuth (°)	Vertical Depth (ft)	+N/-S (ft)	+E/-W (ft)	Vertical Section (ft)	Dogleg Rate (°/100ft)	Build Rate (°/100ft)	Turn Rate (°/100ft)
6,080.0	14.96	90.29	6,067.3	67.9	-161.1	-160.4	7.50	7.50	0.00
6,120.0	17.96	90.29	6,105.7	67.8	-149.8	-149.1	7.50	7.50	0.00
6,160.0	20.96	90.29	6,143.4	67.7	-136.4	-135.8	7.50	7.50	0.00
6,200.0	23.96	90.29	6,180.3	67.7	-121.2	-120.5	7.50	7.50	0.00
6,240.0	26.96	90.29	6,216.5	67.6	-104.0	-103.3	7.50	7.50	0.00
6,280.0	29.96	90.29	6,251.6	67.5	-84.9	-84.3	7.50	7.50	0.00
6,320.0	32.96	90.29	6,285.7	67.4	-64.0	-63.4	7.50	7.50	0.00
6,360.0	35.96	90.29	6,318.7	67.3	-41.4	-40.8	7.50	7.50	0.00
6,400.0	38.96	90.29	6,350.5	67.1	-17.1	-16.4	7.50	7.50	0.00
6,440.0	41.96	90.29	6,380.9	67.0	8.9	9.5	7.50	7.50	0.00
6,480.0	44.96	90.29	6,409.9	66.9	36.4	37.0	7.50	7.50	0.00
6,520.0	47.96	90.29	6,437.5	66.7	65.4	66.0	7.50	7.50	0.00
6,560.0	50.96	90.29	6,463.5	66.6	95.8	96.4	7.50	7.50	0.00
6,600.0	53.96	90.29	6,487.8	66.4	127.5	128.1	7.50	7.50	0.00
6,640.0	56.96	90.29	6,510.5	66.3	160.4	161.1	7.50	7.50	0.00
6,680.0	59.96	90.29	6,531.4	66.1	194.5	195.1	7.50	7.50	0.00
6,720.0	62.96	90.29	6,550.5	65.9	229.6	230.3	7.50	7.50	0.00
6,760.0	65.96	90.29	6,567.8	65.7	265.7	266.4	7.50	7.50	0.00
6,800.0	68.96	90.29	6,583.1	65.5	302.7	303.3	7.50	7.50	0.00
6,840.0	71.96	90.29	6,596.5	65.4	340.4	341.0	7.50	7.50	0.00
6,880.0	74.96	90.29	6,607.9	65.2	378.7	379.3	7.50	7.50	0.00
6,920.0	77.96	90.29	6,617.2	65.0	417.6	418.2	7.50	7.50	0.00
6,960.0	80.96	90.29	6,624.6	64.8	456.9	457.5	7.50	7.50	0.00
7,000.0	83.96	90.29	6,629.8	64.6	496.6	497.2	7.50	7.50	0.00
7,040.0	86.96	90.29	6,633.0	64.4	536.4	537.0	7.50	7.50	0.00
7,080.0	89.96	90.29	6,634.0	64.2	576.4	577.0	7.50	7.50	0.00
7,087.1	90.49	90.29	6,634.0	64.1	583.5	584.1	7.46	7.46	0.00
End of Build - 7"									
7,120.0	90.49	90.29	6,633.7	64.0	616.4	617.0	0.00	0.00	0.00
7,160.0	90.49	90.29	6,633.4	63.8	656.4	657.0	0.00	0.00	0.00
7,200.0	90.49	90.29	6,633.1	63.6	696.4	697.0	0.00	0.00	0.00
7,240.0	90.49	90.29	6,632.7	63.4	736.4	737.0	0.00	0.00	0.00
7,280.0	90.49	90.29	6,632.4	63.2	776.4	777.0	0.00	0.00	0.00
7,320.0	90.49	90.29	6,632.0	63.0	816.4	817.0	0.00	0.00	0.00
7,360.0	90.49	90.29	6,631.7	62.8	856.4	857.0	0.00	0.00	0.00
7,400.0	90.49	90.29	6,631.3	62.6	896.4	897.0	0.00	0.00	0.00
7,440.0	90.49	90.29	6,631.0	62.4	936.4	937.0	0.00	0.00	0.00
7,480.0	90.49	90.29	6,630.7	62.2	976.4	976.9	0.00	0.00	0.00
7,520.0	90.49	90.29	6,630.3	62.0	1,016.4	1,016.9	0.00	0.00	0.00
7,560.0	90.49	90.29	6,630.0	61.8	1,056.4	1,056.9	0.00	0.00	0.00
7,600.0	90.49	90.29	6,629.6	61.6	1,096.4	1,096.9	0.00	0.00	0.00
7,640.0	90.49	90.29	6,629.3	61.4	1,136.4	1,136.9	0.00	0.00	0.00
7,680.0	90.49	90.29	6,628.9	61.2	1,176.4	1,176.9	0.00	0.00	0.00
7,720.0	90.49	90.29	6,628.6	61.0	1,216.4	1,216.9	0.00	0.00	0.00
7,760.0	90.49	90.29	6,628.3	60.8	1,256.4	1,256.9	0.00	0.00	0.00
7,800.0	90.49	90.29	6,627.9	60.6	1,296.4	1,296.9	0.00	0.00	0.00
7,840.0	90.49	90.29	6,627.6	60.4	1,336.4	1,336.9	0.00	0.00	0.00
7,880.0	90.49	90.29	6,627.2	60.2	1,376.4	1,376.9	0.00	0.00	0.00
7,920.0	90.49	90.29	6,626.9	60.0	1,416.4	1,416.9	0.00	0.00	0.00
7,960.0	90.49	90.29	6,626.6	59.7	1,456.4	1,456.9	0.00	0.00	0.00
8,000.0	90.49	90.29	6,626.2	59.5	1,496.4	1,496.9	0.00	0.00	0.00
8,040.0	90.49	90.29	6,625.9	59.3	1,536.4	1,536.9	0.00	0.00	0.00
8,080.0	90.49	90.29	6,625.5	59.1	1,576.4	1,576.9	0.00	0.00	0.00



<b>Database:</b>	Landmark	<b>Local Co-ordinate Reference:</b>	Well Maxey 24Q-112
<b>Company:</b>	PETROLEUM DEVELOPMENT CORP Weld County CO	<b>TVD Reference:</b>	WELL @ 4650.0ft (RKB - 15')
<b>Project:</b>	SEC.24-T5N-R65W	<b>MD Reference:</b>	WELL @ 4650.0ft (RKB - 15')
<b>Site:</b>	Maxey 24Q-HZ Pad Sec.24-T5N-R65W	<b>North Reference:</b>	True
<b>Well:</b>	Maxey 24Q-112	<b>Survey Calculation Method:</b>	Minimum Curvature
<b>Wellbore:</b>	Wellbore #1		
<b>Design:</b>	Plan #1 (3-07-13)		

Planned Survey									
Measured Depth (ft)	Inclination (°)	Azimuth (°)	Vertical Depth (ft)	+N/-S (ft)	+E/-W (ft)	Vertical Section (ft)	Dogleg Rate (°/100ft)	Build Rate (°/100ft)	Turn Rate (°/100ft)
8,120.0	90.49	90.29	6,625.2	58.9	1,616.4	1,616.9	0.00	0.00	0.00
8,160.0	90.49	90.29	6,624.8	58.7	1,656.4	1,656.8	0.00	0.00	0.00
8,200.0	90.49	90.29	6,624.5	58.5	1,696.4	1,696.8	0.00	0.00	0.00
8,240.0	90.49	90.29	6,624.2	58.3	1,736.4	1,736.8	0.00	0.00	0.00
8,280.0	90.49	90.29	6,623.8	58.1	1,776.4	1,776.8	0.00	0.00	0.00
8,320.0	90.49	90.29	6,623.5	57.9	1,816.4	1,816.8	0.00	0.00	0.00
8,360.0	90.49	90.29	6,623.1	57.7	1,856.3	1,856.8	0.00	0.00	0.00
8,400.0	90.49	90.29	6,622.8	57.5	1,896.3	1,896.8	0.00	0.00	0.00
8,440.0	90.49	90.29	6,622.4	57.3	1,936.3	1,936.8	0.00	0.00	0.00
8,480.0	90.49	90.29	6,622.1	57.1	1,976.3	1,976.8	0.00	0.00	0.00
8,520.0	90.49	90.29	6,621.8	56.9	2,016.3	2,016.8	0.00	0.00	0.00
8,560.0	90.49	90.29	6,621.4	56.7	2,056.3	2,056.8	0.00	0.00	0.00
8,600.0	90.49	90.29	6,621.1	56.5	2,096.3	2,096.8	0.00	0.00	0.00
8,640.0	90.49	90.29	6,620.7	56.3	2,136.3	2,136.8	0.00	0.00	0.00
8,680.0	90.49	90.29	6,620.4	56.1	2,176.3	2,176.8	0.00	0.00	0.00
8,720.0	90.49	90.29	6,620.1	55.9	2,216.3	2,216.8	0.00	0.00	0.00
8,760.0	90.49	90.29	6,619.7	55.7	2,256.3	2,256.8	0.00	0.00	0.00
8,800.0	90.49	90.29	6,619.4	55.5	2,296.3	2,296.8	0.00	0.00	0.00
8,840.0	90.49	90.29	6,619.0	55.3	2,336.3	2,336.8	0.00	0.00	0.00
8,880.0	90.49	90.29	6,618.7	55.1	2,376.3	2,376.7	0.00	0.00	0.00
8,920.0	90.49	90.29	6,618.3	54.9	2,416.3	2,416.7	0.00	0.00	0.00
8,960.0	90.49	90.29	6,618.0	54.7	2,456.3	2,456.7	0.00	0.00	0.00
9,000.0	90.49	90.29	6,617.7	54.5	2,496.3	2,496.7	0.00	0.00	0.00
9,040.0	90.49	90.29	6,617.3	54.3	2,536.3	2,536.7	0.00	0.00	0.00
9,080.0	90.49	90.29	6,617.0	54.1	2,576.3	2,576.7	0.00	0.00	0.00
9,120.0	90.49	90.29	6,616.6	53.9	2,616.3	2,616.7	0.00	0.00	0.00
9,160.0	90.49	90.29	6,616.3	53.7	2,656.3	2,656.7	0.00	0.00	0.00
9,200.0	90.49	90.29	6,615.9	53.5	2,696.3	2,696.7	0.00	0.00	0.00
9,240.0	90.49	90.29	6,615.6	53.3	2,736.3	2,736.7	0.00	0.00	0.00
9,280.0	90.49	90.29	6,615.3	53.1	2,776.3	2,776.7	0.00	0.00	0.00
9,320.0	90.49	90.29	6,614.9	52.9	2,816.3	2,816.7	0.00	0.00	0.00
9,360.0	90.49	90.29	6,614.6	52.7	2,856.3	2,856.7	0.00	0.00	0.00
9,400.0	90.49	90.29	6,614.2	52.5	2,896.3	2,896.7	0.00	0.00	0.00
9,440.0	90.49	90.29	6,613.9	52.3	2,936.3	2,936.7	0.00	0.00	0.00
9,480.0	90.49	90.29	6,613.6	52.1	2,976.3	2,976.7	0.00	0.00	0.00
9,520.0	90.49	90.29	6,613.2	51.9	3,016.3	3,016.7	0.00	0.00	0.00
9,560.0	90.49	90.29	6,612.9	51.7	3,056.3	3,056.6	0.00	0.00	0.00
9,600.0	90.49	90.29	6,612.5	51.5	3,096.3	3,096.6	0.00	0.00	0.00
9,640.0	90.49	90.29	6,612.2	51.3	3,136.3	3,136.6	0.00	0.00	0.00
9,680.0	90.49	90.29	6,611.8	51.1	3,176.3	3,176.6	0.00	0.00	0.00
9,720.0	90.49	90.29	6,611.5	50.9	3,216.3	3,216.6	0.00	0.00	0.00
9,760.0	90.49	90.29	6,611.2	50.7	3,256.3	3,256.6	0.00	0.00	0.00
9,800.0	90.49	90.29	6,610.8	50.5	3,296.3	3,296.6	0.00	0.00	0.00
9,840.0	90.49	90.29	6,610.5	50.3	3,336.3	3,336.6	0.00	0.00	0.00
9,880.0	90.49	90.29	6,610.1	50.1	3,376.3	3,376.6	0.00	0.00	0.00
9,920.0	90.49	90.29	6,609.8	49.9	3,416.3	3,416.6	0.00	0.00	0.00
9,960.0	90.49	90.29	6,609.4	49.7	3,456.3	3,456.6	0.00	0.00	0.00
10,000.0	90.49	90.29	6,609.1	49.5	3,496.3	3,496.6	0.00	0.00	0.00
10,040.0	90.49	90.29	6,608.8	49.3	3,536.3	3,536.6	0.00	0.00	0.00
10,080.0	90.49	90.29	6,608.4	49.1	3,576.3	3,576.6	0.00	0.00	0.00
10,120.0	90.49	90.29	6,608.1	48.9	3,616.3	3,616.6	0.00	0.00	0.00
10,160.0	90.49	90.29	6,607.7	48.7	3,656.3	3,656.6	0.00	0.00	0.00
10,200.0	90.49	90.29	6,607.4	48.5	3,696.3	3,696.6	0.00	0.00	0.00



<b>Database:</b>	Landmark	<b>Local Co-ordinate Reference:</b>	Well Maxey 24Q-112
<b>Company:</b>	PETROLEUM DEVELOPMENT CORP Weld County CO	<b>TVD Reference:</b>	WELL @ 4650.0ft (RKB - 15')
<b>Project:</b>	SEC.24-T5N-R65W	<b>MD Reference:</b>	WELL @ 4650.0ft (RKB - 15')
<b>Site:</b>	Maxey 24Q-HZ Pad Sec.24-T5N-R65W	<b>North Reference:</b>	True
<b>Well:</b>	Maxey 24Q-112	<b>Survey Calculation Method:</b>	Minimum Curvature
<b>Wellbore:</b>	Wellbore #1		
<b>Design:</b>	Plan #1 (3-07-13)		

Planned Survey									
Measured Depth (ft)	Inclination (°)	Azimuth (°)	Vertical Depth (ft)	+N/-S (ft)	+E/-W (ft)	Vertical Section (ft)	Dogleg Rate (°/100ft)	Build Rate (°/100ft)	Turn Rate (°/100ft)
10,240.0	90.49	90.29	6,607.1	48.3	3,736.3	3,736.5	0.00	0.00	0.00
10,280.0	90.49	90.29	6,606.7	48.1	3,776.3	3,776.5	0.00	0.00	0.00
10,320.0	90.49	90.29	6,606.4	47.9	3,816.3	3,816.5	0.00	0.00	0.00
10,360.0	90.49	90.29	6,606.0	47.7	3,856.3	3,856.5	0.00	0.00	0.00
10,400.0	90.49	90.29	6,605.7	47.5	3,896.2	3,896.5	0.00	0.00	0.00
10,440.0	90.49	90.29	6,605.3	47.3	3,936.2	3,936.5	0.00	0.00	0.00
10,480.0	90.49	90.29	6,605.0	47.1	3,976.2	3,976.5	0.00	0.00	0.00
10,520.0	90.49	90.29	6,604.7	46.9	4,016.2	4,016.5	0.00	0.00	0.00
10,560.0	90.49	90.29	6,604.3	46.7	4,056.2	4,056.5	0.00	0.00	0.00
10,600.0	90.49	90.29	6,604.0	46.5	4,096.2	4,096.5	0.00	0.00	0.00
10,640.0	90.49	90.29	6,603.6	46.3	4,136.2	4,136.5	0.00	0.00	0.00
10,680.0	90.49	90.29	6,603.3	46.1	4,176.2	4,176.5	0.00	0.00	0.00
10,720.0	90.49	90.29	6,602.9	45.9	4,216.2	4,216.5	0.00	0.00	0.00
10,760.0	90.49	90.29	6,602.6	45.7	4,256.2	4,256.5	0.00	0.00	0.00
10,800.0	90.49	90.29	6,602.3	45.5	4,296.2	4,296.5	0.00	0.00	0.00
10,840.0	90.49	90.29	6,601.9	45.3	4,336.2	4,336.5	0.00	0.00	0.00
10,880.0	90.49	90.29	6,601.6	45.1	4,376.2	4,376.5	0.00	0.00	0.00
10,920.0	90.49	90.29	6,601.2	44.9	4,416.2	4,416.5	0.00	0.00	0.00
10,960.0	90.49	90.29	6,600.9	44.7	4,456.2	4,456.4	0.00	0.00	0.00
11,000.0	90.49	90.29	6,600.6	44.5	4,496.2	4,496.4	0.00	0.00	0.00
11,040.0	90.49	90.29	6,600.2	44.3	4,536.2	4,536.4	0.00	0.00	0.00
11,064.6	90.49	90.29	6,600.0	44.2	4,560.9	4,561.1	0.00	0.00	0.00

Casing Points				
Measured Depth (ft)	Vertical Depth (ft)	Name	Casing Diameter (")	Hole Diameter (")
7,087.1	6,634.0	7"	7	7-1/2

Plan Annotations				
Measured Depth (ft)	Vertical Depth (ft)	Local Coordinates		Comment
		+N/-S (ft)	+E/-W (ft)	
1,500.0	1,500.0	0.0	0.0	KOP #1
5,880.5	5,870.1	68.0	-187.0	KOP #2
7,087.1	6,634.0	64.1	583.5	End of Build



## **Directional**

# **PETROLEUM DEVELOPMENT CORP Weld County CO**

**SEC.24-T5N-R65W**

**Maxey 24Q-HZ Pad Sec.24-T5N-R65W**

**Maxey 24Q-112**

**Wellbore #1**

**Plan #1 (3-07-13)**

## **Anticollision Report**

**18 March, 2013**



<b>Company:</b>	PETROLEUM DEVELOPMENT CORP Weld County CO	<b>Local Co-ordinate Reference:</b>	Well Maxey 24Q-112
<b>Project:</b>	SEC.24-T5N-R65W	<b>TVD Reference:</b>	WELL @ 4650.0ft (RKB - 15')
<b>Reference Site:</b>	Maxey 24Q-HZ Pad Sec.24-T5N-R65W	<b>MD Reference:</b>	WELL @ 4650.0ft (RKB - 15')
<b>Site Error:</b>	0.0ft	<b>North Reference:</b>	True
<b>Reference Well:</b>	Maxey 24Q-112	<b>Survey Calculation Method:</b>	Minimum Curvature
<b>Well Error:</b>	0.0ft	<b>Output errors are at</b>	2.00 sigma
<b>Reference Wellbore</b>	Wellbore #1	<b>Database:</b>	Landmark
<b>Reference Design:</b>	Plan #1 (3-07-13)	<b>Offset TVD Reference:</b>	Offset Datum

<b>Reference</b>	Plan #1 (3-07-13)		
<b>Filter type:</b>	NO GLOBAL FILTER: Using user defined selection & filtering criteria		
<b>Interpolation Method:</b>	MD Interval 100.0ft	<b>Error Model:</b>	ISCWSA
<b>Depth Range:</b>	Unlimited	<b>Scan Method:</b>	Closest Approach 3D
<b>Results Limited by:</b>	Maximum center-center distance of 1,000.0ft	<b>Error Surface:</b>	Elliptical Conic
<b>Warning Levels Evaluated at:</b>	2.00 Sigma		

<b>Survey Tool Program</b>	<b>Date</b> 3/18/2013			
<b>From (ft)</b>	<b>To (ft)</b>	<b>Survey (Wellbore)</b>	<b>Tool Name</b>	<b>Description</b>
0.0	11,064.6	Plan #1 (3-07-13) (Wellbore #1)	MWD	MWD - Standard

<b>Summary</b>						
<b>Site Name</b>	<b>Reference Measured Depth (ft)</b>	<b>Offset Measured Depth (ft)</b>	<b>Distance Between Centres (ft)</b>	<b>Distance Between Ellipses (ft)</b>	<b>Separation Factor</b>	<b>Warning</b>
<b>Offset Well - Wellbore - Design</b>						
Maxey 24Q-HZ Pad Sec.24-T5N-R65W						
Emily 24-19 (Exist.) - Wellbore #1 - Wellbore #1	10,907.3	6,580.3	250.6	117.8	1.887	CC, ES, SF
Maxey 2 (Exist.) - Wellbore #1 - Wellbore #1	6,953.2	6,608.5	223.0	195.3	8.054	CC, ES
Maxey 2 (Exist.) - Wellbore #1 - Wellbore #1	7,000.0	6,614.8	227.8	199.2	7.973	SF
Maxey 24P-232 - Wellbore #1 - Plan #1 (3-07-13)	200.0	200.0	61.3	60.6	90.901	CC
Maxey 24P-232 - Wellbore #1 - Plan #1 (3-07-13)	300.0	299.6	61.6	60.5	54.761	ES
Maxey 24P-232 - Wellbore #1 - Plan #1 (3-07-13)	11,065.3	11,236.0	700.0	444.0	2.734	SF
Maxey 24P-332 - Wellbore #1 - Plan #1 (03-07-13)	1,000.0	1,000.0	30.6	26.4	7.176	CC, ES
Maxey 24P-332 - Wellbore #1 - Plan #1 (03-07-13)	11,065.3	11,283.6	369.3	137.1	1.591	SF
Maxey 24Q-302 - Wellbore #1 - Plan #1 (3-07-13)	1,500.0	1,500.0	30.6	24.1	4.702	CC, ES
Maxey 24Q-302 - Wellbore #1 - Plan #1 (3-07-13)	11,065.3	11,271.8	372.6	139.8	1.601	SF
Maxey 44-24 (Exist.) - Wellbore #1 - Wellbore #1	8,297.6	6,605.7	55.0	-5.8	0.904	Level 1, CC
Maxey 44-24 (Exist.) - Wellbore #1 - Wellbore #1	8,300.0	6,605.6	55.0	-5.8	0.904	Level 1, ES, SF
Maxey Hoff 1 (Exist.) - Wellbore #1 - Wellbore #1	9,531.2	6,594.1	181.5	87.0	1.920	CC, ES, SF

<b>Offset Design</b>												
Maxey 24Q-HZ Pad Sec.24-T5N-R65W - Emily 24-19 (Exist.) - Wellbore #1 - Wellbore #1												
Survey Program: 7300-MWD												
<b>Reference</b>		<b>Offset</b>		<b>Semi Major Axis</b>			<b>Distance</b>					
<b>Measured Depth (ft)</b>	<b>Vertical Depth (ft)</b>	<b>Measured Depth (ft)</b>	<b>Vertical Depth (ft)</b>	<b>Reference (ft)</b>	<b>Offset (ft)</b>	<b>Highside Toolface (°)</b>	<b>Offset Wellbore Centre +N/-S (ft)</b>	<b>+E/-W (ft)</b>	<b>Between Centres (ft)</b>	<b>Between Ellipses (ft)</b>	<b>Minimum Separation (ft)</b>	<b>Separation Factor</b>
10,000.0	6,609.1	6,588.1	6,588.1	100.1	7.4	-91.77	295.5	4,404.8	941.2	833.8	107.47	8.758
10,100.0	6,608.2	6,587.2	6,587.2	102.9	7.4	-91.58	295.5	4,404.8	845.3	735.0	110.26	7.666
10,200.0	6,607.4	6,586.4	6,586.4	105.7	7.4	-91.38	295.5	4,404.8	750.4	637.3	113.04	6.638
10,300.0	6,606.5	6,585.5	6,585.5	108.5	7.4	-91.19	295.5	4,404.8	656.9	541.1	115.83	5.672
10,400.0	6,605.7	6,584.7	6,584.7	111.2	7.4	-90.99	295.5	4,404.8	565.8	447.2	118.62	4.770
10,500.0	6,604.8	6,583.8	6,583.8	114.0	7.4	-90.80	295.5	4,404.8	478.2	356.8	121.41	3.939
10,600.0	6,604.0	6,583.0	6,583.0	116.8	7.4	-90.60	295.5	4,404.8	396.5	272.3	124.20	3.192
10,700.0	6,603.1	6,582.1	6,582.1	119.6	7.4	-90.41	295.5	4,404.8	325.2	198.2	126.99	2.561
10,800.0	6,602.3	6,581.3	6,581.3	122.4	7.4	-90.21	295.5	4,404.8	272.6	142.8	129.78	2.100
10,900.0	6,601.4	6,580.4	6,580.4	125.2	7.4	-90.01	295.5	4,404.8	250.7	118.1	132.56	1.891
10,907.3	6,601.3	6,580.3	6,580.3	125.4	7.4	-90.00	295.5	4,404.8	250.6	117.8	132.77	1.887 CC, ES, SF
11,000.0	6,600.6	6,579.6	6,579.6	128.0	7.4	-89.82	295.5	4,404.8	267.1	131.8	135.35	1.974
11,065.3	6,600.0	6,579.0	6,579.0	129.8	7.4	-89.69	295.5	4,404.8	296.2	159.0	137.17	2.159

CC - Min centre to center distance or convergent point, SF - min separation factor, ES - min ellipse separation

<b>Company:</b>	PETROLEUM DEVELOPMENT CORP Weld County CO	<b>Local Co-ordinate Reference:</b>	Well Maxey 24Q-112
<b>Project:</b>	SEC.24-T5N-R65W	<b>TVD Reference:</b>	WELL @ 4650.0ft (RKB - 15')
<b>Reference Site:</b>	Maxey 24Q-HZ Pad Sec.24-T5N-R65W	<b>MD Reference:</b>	WELL @ 4650.0ft (RKB - 15')
<b>Site Error:</b>	0.0ft	<b>North Reference:</b>	True
<b>Reference Well:</b>	Maxey 24Q-112	<b>Survey Calculation Method:</b>	Minimum Curvature
<b>Well Error:</b>	0.0ft	<b>Output errors are at</b>	2.00 sigma
<b>Reference Wellbore</b>	Wellbore #1	<b>Database:</b>	Landmark
<b>Reference Design:</b>	Plan #1 (3-07-13)	<b>Offset TVD Reference:</b>	Offset Datum

Offset Design Maxey 24Q-HZ Pad Sec.24-T5N-R65W - Maxey 2 (Exist.) - Wellbore #1 - Wellbore #1													Offset Site Error:	0.0 ft
Survey Program: 7300-MWD													Offset Well Error:	0.0 ft
Measured Depth (ft)	Vertical Depth (ft)	Measured Depth (ft)	Vertical Depth (ft)	Reference	Offset	Semi Major Axis	Highside Toolface (°)	Offset Wellbore Centre +N/-S (ft)	Offset Wellbore Centre +E/-W (ft)	Between Centres (ft)	Between Ellipses (ft)	Minimum Separation (ft)	Separation Factor	Warning
0.0	0.0	0.0	0.0	0.0	0.0	57.47	57.47	287.8	451.3	535.5				
100.0	100.0	85.0	85.0	0.1	0.1	57.47	57.47	287.8	451.3	535.3	535.1	0.21	2,572.288	
200.0	200.0	185.0	185.0	0.3	0.2	57.47	57.47	287.8	451.3	535.3	534.8	0.55	981.764	
300.0	300.0	285.0	285.0	0.6	0.3	57.47	57.47	287.8	451.3	535.3	534.4	0.88	606.652	
400.0	400.0	385.0	385.0	0.8	0.4	57.47	57.47	287.8	451.3	535.3	534.1	1.22	438.942	
500.0	500.0	485.0	485.0	1.0	0.5	57.47	57.47	287.8	451.3	535.3	533.8	1.56	343.876	
600.0	600.0	585.0	585.0	1.2	0.7	57.47	57.47	287.8	451.3	535.3	533.4	1.89	282.658	
700.0	700.0	685.0	685.0	1.5	0.8	57.47	57.47	287.8	451.3	535.3	533.1	2.23	239.943	
800.0	800.0	785.0	785.0	1.7	0.9	57.47	57.47	287.8	451.3	535.3	532.7	2.57	208.443	
900.0	900.0	885.0	885.0	1.9	1.0	57.47	57.47	287.8	451.3	535.3	532.4	2.91	184.254	
1,000.0	1,000.0	985.0	985.0	2.1	1.1	57.47	57.47	287.8	451.3	535.3	532.1	3.24	165.095	
1,100.0	1,100.0	1,085.0	1,085.0	2.4	1.2	57.47	57.47	287.8	451.3	535.3	531.7	3.58	149.546	
1,200.0	1,200.0	1,185.0	1,185.0	2.6	1.3	57.47	57.47	287.8	451.3	535.3	531.4	3.92	136.673	
1,300.0	1,300.0	1,285.0	1,285.0	2.8	1.4	57.47	57.47	287.8	451.3	535.3	531.1	4.25	125.841	
1,400.0	1,400.0	1,385.0	1,385.0	3.0	1.6	57.47	57.47	287.8	451.3	535.3	530.7	4.59	116.600	
1,500.0	1,500.0	1,485.0	1,485.0	3.3	1.7	57.47	57.47	287.8	451.3	535.3	530.4	4.93	108.623	
1,600.0	1,600.0	1,585.0	1,585.0	3.5	1.8	127.62	127.62	287.8	451.3	536.4	531.1	5.26	102.057	
1,700.0	1,699.8	1,684.8	1,684.8	3.7	1.9	128.01	128.01	287.8	451.3	539.6	534.0	5.58	96.781	
1,800.0	1,799.5	1,784.5	1,784.5	3.9	2.0	128.65	128.65	287.8	451.3	545.0	539.1	5.90	92.393	
1,900.0	1,898.8	1,883.8	1,883.8	4.1	2.1	129.52	129.52	287.8	451.3	552.0	545.8	6.23	88.571	
2,000.0	1,998.2	1,983.2	1,983.2	4.4	2.2	130.39	130.39	287.8	451.3	559.1	552.6	6.57	85.079	
2,100.0	2,097.6	2,082.6	2,082.6	4.6	2.3	131.25	131.25	287.8	451.3	566.4	559.5	6.92	81.897	
2,200.0	2,197.0	2,182.0	2,182.0	4.9	2.5	132.08	132.08	287.8	451.3	573.8	566.6	7.26	78.996	
2,300.0	2,296.4	2,281.4	2,281.4	5.2	2.6	132.89	132.89	287.8	451.3	581.4	573.7	7.61	76.348	
2,400.0	2,395.7	2,380.7	2,380.7	5.4	2.7	133.68	133.68	287.8	451.3	589.0	581.0	7.97	73.928	
2,500.0	2,495.1	2,480.1	2,480.1	5.7	2.8	134.44	134.44	287.8	451.3	596.7	588.4	8.32	71.712	
2,600.0	2,594.5	2,579.5	2,579.5	6.0	2.9	135.19	135.19	287.8	451.3	604.6	595.9	8.68	69.680	
2,700.0	2,693.9	2,678.9	2,678.9	6.3	3.0	135.92	135.92	287.8	451.3	612.5	603.5	9.03	67.813	
2,800.0	2,793.3	2,778.3	2,778.3	6.5	3.1	136.63	136.63	287.8	451.3	620.6	611.2	9.39	66.093	
2,900.0	2,892.7	2,877.7	2,877.7	6.8	3.2	137.33	137.33	287.8	451.3	628.7	619.0	9.75	64.506	
3,000.0	2,992.0	2,977.0	2,977.0	7.1	3.3	138.00	138.00	287.8	451.3	637.0	626.9	10.10	63.038	
3,100.0	3,091.4	3,076.4	3,076.4	7.4	3.5	138.66	138.66	287.8	451.3	645.3	634.8	10.46	61.678	
3,200.0	3,190.8	3,175.8	3,175.8	7.7	3.6	139.30	139.30	287.8	451.3	653.7	642.9	10.82	60.416	
3,300.0	3,290.2	3,275.2	3,275.2	8.0	3.7	139.93	139.93	287.8	451.3	662.2	651.0	11.18	59.249	
3,400.0	3,389.8	3,374.8	3,374.8	8.2	3.8	140.52	140.52	287.8	451.3	669.1	657.7	11.49	58.236	
3,500.0	3,489.6	3,474.6	3,474.6	8.4	3.9	140.88	140.88	287.8	451.3	673.5	661.7	11.79	57.108	
3,600.0	3,589.6	3,574.6	3,574.6	8.6	4.0	141.01	141.01	287.8	451.3	675.1	663.0	12.08	55.871	
3,700.0	3,689.6	3,674.6	3,674.6	8.7	4.1	71.00	71.00	287.8	451.3	675.1	662.5	12.60	53.562	
3,800.0	3,789.6	3,774.6	3,774.6	8.9	4.2	71.00	71.00	287.8	451.3	675.1	662.2	12.92	52.240	
3,900.0	3,889.6	3,874.6	3,874.6	9.1	4.4	71.00	71.00	287.8	451.3	675.1	661.9	13.24	50.979	
4,000.0	3,989.6	3,974.6	3,974.6	9.3	4.5	71.00	71.00	287.8	451.3	675.1	661.6	13.56	49.774	
4,100.0	4,089.6	4,074.6	4,074.6	9.5	4.6	71.00	71.00	287.8	451.3	675.1	661.3	13.89	48.622	
4,200.0	4,189.6	4,174.6	4,174.6	9.7	4.7	71.00	71.00	287.8	451.3	675.1	660.9	14.21	47.520	
4,300.0	4,289.6	4,274.6	4,274.6	10.0	4.8	71.00	71.00	287.8	451.3	675.1	660.6	14.53	46.465	
4,400.0	4,389.6	4,374.6	4,374.6	10.2	4.9	71.00	71.00	287.8	451.3	675.1	660.3	14.85	45.453	
4,500.0	4,489.6	4,474.6	4,474.6	10.4	5.0	71.00	71.00	287.8	451.3	675.1	660.0	15.18	44.483	
4,600.0	4,589.6	4,574.6	4,574.6	10.6	5.1	71.00	71.00	287.8	451.3	675.1	659.6	15.50	43.552	
4,700.0	4,689.6	4,674.6	4,674.6	10.8	5.3	71.00	71.00	287.8	451.3	675.1	659.3	15.83	42.657	
4,800.0	4,789.6	4,774.6	4,774.6	11.0	5.4	71.00	71.00	287.8	451.3	675.1	659.0	16.15	41.798	
4,900.0	4,889.6	4,874.6	4,874.6	11.2	5.5	71.00	71.00	287.8	451.3	675.1	658.7	16.48	40.971	
5,000.0	4,989.6	4,974.6	4,974.6	11.4	5.6	71.00	71.00	287.8	451.3	675.1	658.3	16.80	40.175	

CC - Min centre to center distance or convergent point, SF - min separation factor, ES - min ellipse separation

<b>Company:</b>	PETROLEUM DEVELOPMENT CORP Weld County CO	<b>Local Co-ordinate Reference:</b>	Well Maxey 24Q-112
<b>Project:</b>	SEC.24-T5N-R65W	<b>TVD Reference:</b>	WELL @ 4650.0ft (RKB - 15')
<b>Reference Site:</b>	Maxey 24Q-HZ Pad Sec.24-T5N-R65W	<b>MD Reference:</b>	WELL @ 4650.0ft (RKB - 15')
<b>Site Error:</b>	0.0ft	<b>North Reference:</b>	True
<b>Reference Well:</b>	Maxey 24Q-112	<b>Survey Calculation Method:</b>	Minimum Curvature
<b>Well Error:</b>	0.0ft	<b>Output errors are at</b>	2.00 sigma
<b>Reference Wellbore</b>	Wellbore #1	<b>Database:</b>	Landmark
<b>Reference Design:</b>	Plan #1 (3-07-13)	<b>Offset TVD Reference:</b>	Offset Datum

<b>Offset Design</b> Maxey 24Q-HZ Pad Sec.24-T5N-R65W - Maxey 2 (Exist.) - Wellbore #1 - Wellbore #1												<b>Offset Site Error:</b>	0.0 ft
Survey Program: 7300-MWD												<b>Offset Well Error:</b>	0.0 ft
Reference	Offset	Semi Major Axis		Distance		Warning							
Measured Depth (ft)	Vertical Depth (ft)	Measured Depth (ft)	Vertical Depth (ft)	Reference (ft)	Offset (ft)	Highside Toolface (°)	Offset Wellbore Centre +N/-S (ft)	+E/-W (ft)	Between Centres (ft)	Between Ellipses (ft)	Minimum Separation (ft)	Separation Factor	
5,100.0	5,089.6	5,074.6	5,074.6	11.6	5.7	71.00	287.8	451.3	675.1	658.0	17.13	39.409	
5,200.0	5,189.6	5,174.6	5,174.6	11.8	5.8	71.00	287.8	451.3	675.1	657.7	17.46	38.670	
5,300.0	5,289.6	5,274.6	5,274.6	12.1	5.9	71.00	287.8	451.3	675.1	657.3	17.79	37.958	
5,400.0	5,389.6	5,374.6	5,374.6	12.3	6.0	71.00	287.8	451.3	675.1	657.0	18.11	37.271	
5,500.0	5,489.6	5,474.6	5,474.6	12.5	6.2	71.00	287.8	451.3	675.1	656.7	18.44	36.607	
5,600.0	5,589.6	5,574.6	5,574.6	12.7	6.3	71.00	287.8	451.3	675.1	656.4	18.77	35.966	
5,700.0	5,689.6	5,674.6	5,674.6	12.9	6.4	71.00	287.8	451.3	675.1	656.0	19.10	35.347	
5,800.0	5,789.6	5,774.6	5,774.6	13.1	6.5	71.00	287.8	451.3	675.1	655.7	19.43	34.748	
5,900.0	5,889.6	5,874.6	5,874.6	13.3	6.6	-19.30	287.8	451.3	674.9	655.3	19.58	34.475	
6,000.0	5,989.1	5,974.1	5,974.1	13.5	6.7	-19.78	287.8	451.3	666.3	646.6	19.73	33.770	
6,100.0	6,086.6	6,071.6	6,071.6	13.6	6.8	-21.00	287.8	451.3	645.7	625.9	19.73	32.729	
6,200.0	6,180.3	6,165.3	6,165.3	13.7	6.9	-23.13	287.8	451.3	613.4	593.8	19.60	31.299	
6,300.0	6,268.8	6,253.8	6,253.8	13.9	7.0	-26.48	287.8	451.3	570.3	550.9	19.41	29.380	
6,400.0	6,350.5	6,335.5	6,335.5	14.1	7.1	-31.54	287.8	451.3	517.8	498.5	19.32	26.799	
6,500.0	6,423.9	6,408.9	6,408.9	14.6	7.2	-39.02	287.8	451.3	457.6	438.0	19.60	23.342	
6,600.0	6,487.8	6,472.8	6,472.8	15.3	7.3	-49.59	287.8	451.3	392.3	371.7	20.63	19.019	
6,700.0	6,541.2	6,526.2	6,526.2	16.3	7.3	-62.96	287.8	451.3	326.4	303.9	22.50	14.505	
6,800.0	6,583.1	6,568.1	6,568.1	17.6	7.4	-76.64	287.8	451.3	267.4	242.7	24.69	10.832	
6,900.0	6,612.8	6,597.8	6,597.8	19.3	7.4	-86.87	287.8	451.3	229.0	202.4	26.67	8.589	
6,953.2	6,623.5	6,608.5	6,608.5	20.3	7.4	-90.00	287.8	451.3	223.0	195.3	27.69	8.054 CC, ES	
7,000.0	6,629.8	6,614.8	6,614.8	21.1	7.4	-91.25	287.8	451.3	227.8	199.2	28.57	7.973 SF	
7,100.0	6,633.9	6,618.9	6,618.9	23.2	7.4	-89.68	287.8	451.3	266.7	236.0	30.64	8.703	
7,200.0	6,633.1	6,618.1	6,618.1	25.4	7.4	-89.46	287.8	451.3	332.2	299.4	32.83	10.120	
7,300.0	6,632.2	6,617.2	6,617.2	27.7	7.4	-89.24	287.8	451.3	411.8	376.7	35.12	11.725	
7,400.0	6,631.3	6,616.3	6,616.3	30.1	7.4	-89.02	287.8	451.3	498.8	461.3	37.51	13.299	
7,500.0	6,630.5	6,615.5	6,615.5	32.5	7.4	-88.80	287.8	451.3	590.0	550.0	39.96	14.764	
7,600.0	6,629.6	6,614.6	6,614.6	35.0	7.4	-88.58	287.8	451.3	683.6	641.1	42.46	16.099	
7,700.0	6,628.8	6,613.8	6,613.8	37.6	7.4	-88.36	287.8	451.3	778.8	733.8	45.01	17.304	
7,800.0	6,627.9	6,612.9	6,612.9	40.2	7.4	-88.14	287.8	451.3	875.1	827.5	47.59	18.389	
7,900.0	6,627.1	6,612.1	6,612.1	42.8	7.4	-87.92	287.8	451.3	972.1	921.9	50.19	19.367	

<b>Company:</b>	PETROLEUM DEVELOPMENT CORP Weld County CO	<b>Local Co-ordinate Reference:</b>	Well Maxey 24Q-112
<b>Project:</b>	SEC.24-T5N-R65W	<b>TVD Reference:</b>	WELL @ 4650.0ft (RKB - 15')
<b>Reference Site:</b>	Maxey 24Q-HZ Pad Sec.24-T5N-R65W	<b>MD Reference:</b>	WELL @ 4650.0ft (RKB - 15')
<b>Site Error:</b>	0.0ft	<b>North Reference:</b>	True
<b>Reference Well:</b>	Maxey 24Q-112	<b>Survey Calculation Method:</b>	Minimum Curvature
<b>Well Error:</b>	0.0ft	<b>Output errors are at</b>	2.00 sigma
<b>Reference Wellbore</b>	Wellbore #1	<b>Database:</b>	Landmark
<b>Reference Design:</b>	Plan #1 (3-07-13)	<b>Offset TVD Reference:</b>	Offset Datum

Offset Design Maxey 24Q-HZ Pad Sec.24-T5N-R65W - Maxey 24P-232 - Wellbore #1 - Plan #1 (3-07-13)													Offset Site Error:	0.0 ft
Survey Program: 0-MWD													Offset Well Error:	0.0 ft
Measured Depth (ft)	Vertical Depth (ft)	Measured Depth (ft)	Vertical Depth (ft)	Reference	Offset	Semi Major Axis	Highside Toolface (°)	Offset Wellbore Centre +N/-S (ft)	Offset Wellbore Centre +E/-W (ft)	Distance Between Centres (ft)	Distance Between Ellipses (ft)	Minimum Separation (ft)	Separation Factor	Warning
0.0	0.0	0.0	0.0	0.0	0.0	-90.02	-90.02	0.0	-61.3	61.3				
100.0	100.0	100.0	100.0	0.1	0.1	-90.02	-90.02	0.0	-61.3	61.3	61.1	0.22	272.703	
200.0	200.0	200.0	200.0	0.3	0.3	-90.02	-90.02	0.0	-61.3	61.3	60.6	0.67	90.901 CC	
300.0	300.0	299.6	299.6	0.6	0.6	-88.44	-88.44	1.7	-61.6	61.6	60.5	1.13	54.761 ES	
400.0	400.0	398.9	398.8	0.8	0.8	-83.82	-83.82	6.8	-62.5	62.9	61.3	1.59	39.683	
500.0	500.0	497.8	497.2	1.0	1.0	-76.66	-76.66	15.2	-64.1	65.9	63.9	2.05	32.177	
600.0	600.0	595.9	594.7	1.2	1.3	-67.92	-67.92	26.9	-66.2	71.6	69.1	2.52	28.473	
700.0	700.0	693.9	691.6	1.5	1.6	-58.94	-58.94	41.5	-68.8	80.8	77.8	3.00	26.941	
800.0	800.0	792.7	789.1	1.7	2.0	-51.62	-51.62	56.7	-71.6	92.0	88.5	3.49	26.341	
900.0	900.0	891.5	886.6	1.9	2.3	-45.95	-45.95	72.0	-74.4	104.4	100.4	4.01	26.033	
1,000.0	1,000.0	990.2	984.2	2.1	2.6	-41.50	-41.50	87.2	-77.2	117.5	113.0	4.54	25.873	
1,100.0	1,100.0	1,089.0	1,081.7	2.4	3.0	-37.96	-37.96	102.5	-80.0	131.3	126.2	5.09	25.796	
1,200.0	1,200.0	1,187.8	1,179.2	2.6	3.3	-35.10	-35.10	117.7	-82.7	145.4	139.7	5.64	25.768	
1,300.0	1,300.0	1,286.5	1,276.8	2.8	3.7	-32.74	-32.74	133.0	-85.5	159.8	153.6	6.20	25.769	
1,400.0	1,400.0	1,385.3	1,374.3	3.0	4.1	-30.78	-30.78	148.2	-88.3	174.4	167.7	6.76	25.788	
1,500.0	1,500.0	1,484.0	1,471.8	3.3	4.4	-29.12	-29.12	163.5	-91.1	189.2	181.9	7.33	25.817	
1,600.0	1,600.0	1,582.9	1,569.5	3.5	4.8	42.47	42.47	178.7	-93.8	202.9	195.7	7.24	28.024	
1,700.0	1,699.8	1,681.9	1,667.3	3.7	5.1	44.49	44.49	194.0	-96.6	214.3	206.6	7.68	27.890	
1,800.0	1,799.5	1,781.0	1,765.1	3.9	5.5	46.95	46.95	209.3	-99.4	223.5	215.4	8.12	27.513	
1,900.0	1,898.8	1,880.0	1,862.9	4.1	5.9	49.75	49.75	224.6	-102.2	231.7	223.1	8.58	27.014	
2,000.0	1,998.2	1,979.1	1,960.8	4.4	6.2	52.39	52.39	239.9	-105.0	240.3	231.3	9.04	26.580	
2,100.0	2,097.6	2,078.1	2,058.6	4.6	6.6	54.84	54.84	255.2	-107.8	249.4	239.9	9.52	26.202	
2,200.0	2,197.0	2,177.1	2,156.4	4.9	6.9	57.11	57.11	270.5	-110.5	259.0	249.0	10.01	25.869	
2,300.0	2,296.4	2,276.2	2,254.2	5.2	7.3	59.22	59.22	285.8	-113.3	268.9	258.4	10.51	25.575	
2,400.0	2,395.7	2,375.2	2,352.0	5.4	7.7	61.19	61.19	301.1	-116.1	279.2	268.2	11.03	25.313	
2,500.0	2,495.1	2,474.2	2,449.8	5.7	8.0	63.01	63.01	316.4	-118.9	289.8	278.2	11.55	25.078	
2,600.0	2,594.5	2,573.2	2,547.6	6.0	8.4	64.70	64.70	331.7	-121.7	300.6	288.5	12.09	24.867	
2,700.0	2,693.9	2,672.3	2,645.4	6.3	8.7	66.27	66.27	347.0	-124.5	311.7	299.1	12.63	24.677	
2,800.0	2,793.3	2,771.3	2,743.2	6.5	9.1	67.74	67.74	362.3	-127.3	323.0	309.8	13.18	24.505	
2,900.0	2,892.7	2,870.3	2,841.0	6.8	9.5	69.10	69.10	377.6	-130.0	334.5	320.8	13.74	24.350	
3,000.0	2,992.0	2,969.4	2,938.8	7.1	9.8	70.38	70.38	392.9	-132.8	346.2	331.9	14.30	24.209	
3,100.0	3,091.4	3,068.4	3,036.6	7.4	10.2	71.57	71.57	408.2	-135.6	358.0	343.1	14.87	24.081	
3,200.0	3,190.8	3,167.4	3,134.4	7.7	10.5	72.69	72.69	423.4	-138.4	370.0	354.6	15.44	23.965	
3,300.0	3,290.2	3,266.5	3,232.2	8.0	10.9	73.75	73.75	438.7	-141.2	382.1	366.1	16.01	23.863	
3,400.0	3,389.8	3,365.5	3,330.0	8.2	11.3	74.69	74.69	454.0	-144.0	394.9	378.4	16.51	23.923	
3,500.0	3,489.6	3,464.6	3,427.8	8.4	11.6	75.14	75.14	469.3	-146.7	408.6	391.6	16.97	24.082	
3,600.0	3,589.6	3,563.5	3,525.5	8.6	12.0	75.12	75.12	484.6	-149.5	423.2	405.8	17.39	24.334	
3,700.0	3,689.6	3,662.2	3,623.0	8.7	12.3	4.59	4.59	499.9	-152.3	438.3	418.2	20.16	21.744	
3,800.0	3,789.6	3,761.0	3,720.6	8.9	12.7	4.08	4.08	515.1	-155.1	453.5	432.8	20.74	21.862	
3,900.0	3,889.6	3,859.7	3,818.1	9.1	13.1	3.61	3.61	530.4	-157.9	468.8	447.4	21.33	21.976	
4,000.0	3,989.6	3,958.5	3,915.6	9.3	13.4	3.16	3.16	545.6	-160.6	484.0	462.1	21.92	22.085	
4,100.0	4,089.6	4,057.3	4,013.2	9.5	13.8	2.74	2.74	560.9	-163.4	499.3	476.8	22.50	22.190	
4,200.0	4,189.6	4,156.0	4,110.7	9.7	14.2	2.35	2.35	576.1	-166.2	514.6	491.5	23.09	22.290	
4,300.0	4,289.6	4,254.8	4,208.3	10.0	14.5	1.97	1.97	591.4	-169.0	530.0	506.3	23.67	22.387	
4,400.0	4,389.6	4,353.5	4,305.8	10.2	14.9	1.62	1.62	606.6	-171.7	545.3	521.1	24.26	22.480	
4,500.0	4,489.6	4,452.3	4,403.3	10.4	15.2	1.29	1.29	621.9	-174.5	560.7	535.8	24.84	22.569	
4,600.0	4,589.6	4,551.1	4,500.9	10.6	15.6	0.98	0.98	637.1	-177.3	576.1	550.7	25.43	22.655	
4,700.0	4,689.6	4,649.8	4,598.4	10.8	16.0	0.68	0.68	652.4	-180.1	591.5	565.5	26.01	22.738	
4,800.0	4,789.6	4,748.6	4,695.9	11.0	16.3	0.40	0.40	667.6	-182.8	606.9	580.3	26.60	22.818	
4,900.0	4,889.6	4,847.3	4,793.5	11.2	16.7	0.13	0.13	682.9	-185.6	622.3	595.2	27.18	22.895	
5,000.0	4,989.6	4,946.1	4,891.0	11.4	17.0	-0.13	-0.13	698.1	-188.4	637.8	610.0	27.77	22.969	

CC - Min centre to center distance or convergent point, SF - min separation factor, ES - min ellipse separation

<b>Company:</b>	PETROLEUM DEVELOPMENT CORP Weld County CO	<b>Local Co-ordinate Reference:</b>	Well Maxey 24Q-112
<b>Project:</b>	SEC.24-T5N-R65W	<b>TVD Reference:</b>	WELL @ 4650.0ft (RKB - 15')
<b>Reference Site:</b>	Maxey 24Q-HZ Pad Sec.24-T5N-R65W	<b>MD Reference:</b>	WELL @ 4650.0ft (RKB - 15')
<b>Site Error:</b>	0.0ft	<b>North Reference:</b>	True
<b>Reference Well:</b>	Maxey 24Q-112	<b>Survey Calculation Method:</b>	Minimum Curvature
<b>Well Error:</b>	0.0ft	<b>Output errors are at</b>	2.00 sigma
<b>Reference Wellbore</b>	Wellbore #1	<b>Database:</b>	Landmark
<b>Reference Design:</b>	Plan #1 (3-07-13)	<b>Offset TVD Reference:</b>	Offset Datum

Offset Design Maxey 24Q-HZ Pad Sec.24-T5N-R65W - Maxey 24P-232 - Wellbore #1 - Plan #1 (3-07-13)													Offset Site Error:	0.0 ft
Survey Program: 0-MWD													Offset Well Error:	0.0 ft
Measured Depth (ft)	Vertical Depth (ft)	Measured Depth (ft)	Vertical Depth (ft)	Reference	Offset	Highside Toolface (°)	Offset Wellbore Centre +N/-S (ft)	Offset Wellbore Centre +E/-W (ft)	Between Centres (ft)	Between Ellipses (ft)	Minimum Separation (ft)	Separation Factor	Warning	
5,100.0	5,089.6	5,044.9	4,988.5	11.6	17.4	-0.37	713.4	-191.2	653.3	624.9	28.35	23.041		
5,200.0	5,189.6	5,154.5	5,096.8	11.8	17.8	-0.62	729.9	-194.2	668.4	639.5	28.95	23.088		
5,300.0	5,289.6	5,283.8	5,225.2	12.1	18.1	-0.84	745.0	-196.9	680.1	650.6	29.51	23.043		
5,400.0	5,389.6	5,414.2	5,355.3	12.3	18.4	-0.97	754.4	-198.6	687.3	657.3	30.00	22.914		
5,500.0	5,489.6	5,545.3	5,486.3	12.5	18.6	-1.02	757.9	-199.3	690.1	659.7	30.41	22.690		
5,600.0	5,589.6	5,648.5	5,589.6	12.7	18.7	-1.02	758.0	-199.3	690.1	659.3	30.77	22.425		
5,700.0	5,689.6	5,748.5	5,689.6	12.9	18.8	-1.02	758.0	-199.3	690.1	659.0	31.14	22.164		
5,800.0	5,789.6	5,848.5	5,789.6	13.1	19.0	-1.02	758.0	-199.3	690.1	658.6	31.50	21.908		
5,858.7	5,848.3	5,907.2	5,848.3	13.2	19.1	-91.34	758.0	-199.3	690.1	662.8	27.28	25.300		
5,900.0	5,889.6	5,948.5	5,889.6	13.3	19.1	-91.33	758.0	-199.3	690.1	662.6	27.45	25.142		
6,000.0	5,989.1	6,048.4	5,989.5	13.5	19.3	-92.05	758.0	-199.2	690.4	662.6	27.77	24.859		
6,100.0	6,086.6	6,151.8	6,092.4	13.6	19.4	-93.20	757.9	-190.7	691.0	663.0	28.01	24.668		
6,200.0	6,180.3	6,257.3	6,195.3	13.7	19.5	-94.30	757.8	-167.8	691.9	663.6	28.24	24.498		
6,300.0	6,268.8	6,364.7	6,295.8	13.9	19.6	-95.32	757.6	-130.1	692.9	664.4	28.53	24.285		
6,400.0	6,350.5	6,474.2	6,391.8	14.1	19.7	-96.26	757.3	-77.6	694.1	665.1	28.99	23.938		
6,500.0	6,423.9	6,585.6	6,480.7	14.6	19.8	-97.09	757.0	-10.7	695.2	665.5	29.76	23.360		
6,600.0	6,487.8	6,698.7	6,560.1	15.3	19.9	-97.79	756.6	69.7	696.3	665.3	31.02	22.448		
6,700.0	6,541.2	6,813.2	6,627.4	16.3	20.2	-98.34	756.1	162.2	697.2	664.3	32.91	21.186		
6,800.0	6,583.1	6,928.8	6,680.7	17.6	20.8	-98.73	755.5	264.7	697.9	662.4	35.50	19.658		
6,900.0	6,612.8	7,045.2	6,718.1	19.3	21.9	-98.95	754.9	374.7	698.2	659.5	38.78	18.007		
7,000.0	6,629.8	7,161.8	6,738.3	21.1	23.7	-98.98	754.3	489.5	698.3	655.6	42.64	16.376		
7,097.6	6,634.7	7,270.5	6,741.9	23.2	25.7	-98.84	753.8	598.1	698.0	651.3	46.72	14.939		
7,100.0	6,633.9	7,272.9	6,741.9	23.2	25.7	-98.90	753.7	600.5	698.1	651.3	46.81	14.914		
7,200.0	6,633.1	7,372.9	6,741.5	25.4	27.7	-98.94	753.2	700.5	698.1	647.0	51.11	13.661		
7,300.0	6,632.2	7,472.9	6,741.1	27.7	29.9	-98.97	752.7	800.5	698.2	642.6	55.62	12.553		
7,400.0	6,631.3	7,572.9	6,740.7	30.1	32.2	-99.01	752.1	900.5	698.2	637.9	60.30	11.579		
7,500.0	6,630.5	7,672.9	6,740.3	32.5	34.6	-99.05	751.6	1,000.5	698.3	633.1	65.12	10.723		
7,600.0	6,629.6	7,772.9	6,739.9	35.0	37.0	-99.09	751.1	1,100.5	698.3	628.3	70.05	9.969		
7,700.0	6,628.8	7,872.9	6,739.5	37.6	39.5	-99.12	750.6	1,200.5	698.3	623.3	75.06	9.304		
7,800.0	6,627.9	7,972.9	6,739.1	40.2	42.0	-99.16	750.0	1,300.5	698.4	618.3	80.14	8.715		
7,900.0	6,627.1	8,072.9	6,738.7	42.8	44.5	-99.20	749.5	1,400.5	698.4	613.2	85.27	8.191		
8,000.0	6,626.2	8,172.9	6,738.3	45.4	47.1	-99.23	749.0	1,500.5	698.5	608.0	90.46	7.722		
8,100.0	6,625.4	8,272.9	6,737.9	48.1	49.7	-99.27	748.4	1,600.5	698.5	602.8	95.68	7.301		
8,200.0	6,624.5	8,372.9	6,737.5	50.7	52.4	-99.31	747.9	1,700.5	698.6	597.6	100.93	6.921		
8,300.0	6,623.6	8,472.9	6,737.1	53.4	55.0	-99.35	747.4	1,800.5	698.6	592.4	106.21	6.577		
8,400.0	6,622.8	8,572.9	6,736.7	56.1	57.7	-99.38	746.8	1,900.5	698.7	587.1	111.52	6.265		
8,500.0	6,621.9	8,672.9	6,736.3	58.8	60.3	-99.42	746.3	2,000.5	698.7	581.9	116.85	5.980		
8,600.0	6,621.1	8,772.9	6,735.9	61.6	63.0	-99.46	745.8	2,100.5	698.8	576.6	122.19	5.719		
8,700.0	6,620.2	8,872.9	6,735.5	64.3	65.7	-99.49	745.3	2,200.5	698.8	571.3	127.55	5.479		
8,800.0	6,619.4	8,972.9	6,735.1	67.0	68.4	-99.53	744.7	2,300.4	698.8	565.9	132.92	5.258		
8,900.0	6,618.5	9,072.9	6,734.7	69.7	71.1	-99.57	744.2	2,400.4	698.9	560.6	138.30	5.053		
9,000.0	6,617.7	9,172.9	6,734.3	72.5	73.9	-99.61	743.7	2,500.4	698.9	555.2	143.69	4.864		
9,100.0	6,616.8	9,272.9	6,733.9	75.2	76.6	-99.64	743.1	2,600.4	699.0	549.9	149.10	4.688		
9,200.0	6,615.9	9,372.9	6,733.5	78.0	79.3	-99.68	742.6	2,700.4	699.0	544.5	154.51	4.524		
9,300.0	6,615.1	9,472.9	6,733.1	80.7	82.1	-99.72	742.1	2,800.4	699.1	539.2	159.92	4.371		
9,400.0	6,614.2	9,572.9	6,732.7	83.5	84.8	-99.75	741.5	2,900.4	699.1	533.8	165.34	4.228		
9,500.0	6,613.4	9,672.9	6,732.3	86.3	87.6	-99.79	741.0	3,000.4	699.2	528.4	170.77	4.094		
9,600.0	6,612.5	9,772.9	6,731.9	89.0	90.3	-99.83	740.5	3,100.4	699.2	523.0	176.20	3.968		
9,700.0	6,611.7	9,872.9	6,731.5	91.8	93.1	-99.86	739.9	3,200.4	699.3	517.6	181.64	3.850		
9,800.0	6,610.8	9,972.9	6,731.1	94.6	95.8	-99.90	739.4	3,300.4	699.3	512.3	187.08	3.738		
9,900.0	6,610.0	10,072.9	6,730.7	97.4	98.6	-99.94	738.9	3,400.4	699.4	506.9	192.52	3.633		

CC - Min centre to center distance or convergent point, SF - min separation factor, ES - min ellipse separation



<b>Company:</b>	PETROLEUM DEVELOPMENT CORP Weld County CO	<b>Local Co-ordinate Reference:</b>	Well Maxey 24Q-112
<b>Project:</b>	SEC.24-T5N-R65W	<b>TVD Reference:</b>	WELL @ 4650.0ft (RKB - 15')
<b>Reference Site:</b>	Maxey 24Q-HZ Pad Sec.24-T5N-R65W	<b>MD Reference:</b>	WELL @ 4650.0ft (RKB - 15')
<b>Site Error:</b>	0.0ft	<b>North Reference:</b>	True
<b>Reference Well:</b>	Maxey 24Q-112	<b>Survey Calculation Method:</b>	Minimum Curvature
<b>Well Error:</b>	0.0ft	<b>Output errors are at</b>	2.00 sigma
<b>Reference Wellbore</b>	Wellbore #1	<b>Database:</b>	Landmark
<b>Reference Design:</b>	Plan #1 (3-07-13)	<b>Offset TVD Reference:</b>	Offset Datum

Offset Design												Maxey 24Q-HZ Pad Sec.24-T5N-R65W - Maxey 24P-232 - Wellbore #1 - Plan #1 (3-07-13)		Offset Site Error:		0.0 ft	
Survey Program: 0-MWD														Offset Well Error:		0.0 ft	
Reference		Offset		Semi Major Axis			Distance										
Measured Depth	Vertical Depth	Measured Depth	Vertical Depth	Reference	Offset	Highside Toolface	Offset Wellbore Centre		Between Centres	Between Ellipses	Minimum Separation	Separation Factor	Warning				
(ft)	(ft)	(ft)	(ft)	(ft)	(ft)	(°)	+N/-S (ft)	+E/-W (ft)	(ft)	(ft)	(ft)						
10,000.0	6,609.1	10,172.9	6,730.3	100.1	101.3	-99.98	738.4	3,500.4	699.4	501.5	197.97	3.533					
10,100.0	6,608.2	10,272.9	6,729.9	102.9	104.1	-100.01	737.8	3,600.4	699.5	496.1	203.41	3.439					
10,200.0	6,607.4	10,372.9	6,729.5	105.7	106.9	-100.05	737.3	3,700.4	699.5	490.7	208.86	3.349					
10,300.0	6,606.5	10,472.9	6,729.1	108.5	109.6	-100.09	736.8	3,800.4	699.6	485.3	214.32	3.264					
10,400.0	6,605.7	10,572.9	6,728.7	111.2	112.4	-100.12	736.2	3,900.4	699.6	479.9	219.77	3.184					
10,500.0	6,604.8	10,672.9	6,728.3	114.0	115.2	-100.16	735.7	4,000.4	699.7	474.5	225.23	3.107					
10,600.0	6,604.0	10,772.9	6,727.9	116.8	118.0	-100.20	735.2	4,100.4	699.7	469.1	230.68	3.033					
10,700.0	6,603.1	10,872.9	6,727.5	119.6	120.7	-100.23	734.6	4,200.4	699.8	463.7	236.14	2.963					
10,800.0	6,602.3	10,972.9	6,727.1	122.4	123.5	-100.27	734.1	4,300.4	699.9	458.3	241.60	2.897					
10,900.0	6,601.4	11,072.9	6,726.7	125.2	126.3	-100.31	733.6	4,400.4	699.9	452.8	247.06	2.833					
11,000.0	6,600.6	11,172.9	6,726.3	128.0	129.1	-100.35	733.1	4,500.4	700.0	447.4	252.52	2.772					
11,030.1	6,600.3	11,203.0	6,726.1	128.8	129.9	-100.36	732.9	4,530.4	700.0	445.8	254.16	2.754					
11,065.3	6,600.0	11,236.0	6,726.0	129.8	130.8	-100.37	732.7	4,563.5	700.0	444.0	256.02	2.734 SF					

<b>Company:</b>	PETROLEUM DEVELOPMENT CORP Weld County CO	<b>Local Co-ordinate Reference:</b>	Well Maxey 24Q-112
<b>Project:</b>	SEC.24-T5N-R65W	<b>TVD Reference:</b>	WELL @ 4650.0ft (RKB - 15')
<b>Reference Site:</b>	Maxey 24Q-HZ Pad Sec.24-T5N-R65W	<b>MD Reference:</b>	WELL @ 4650.0ft (RKB - 15')
<b>Site Error:</b>	0.0ft	<b>North Reference:</b>	True
<b>Reference Well:</b>	Maxey 24Q-112	<b>Survey Calculation Method:</b>	Minimum Curvature
<b>Well Error:</b>	0.0ft	<b>Output errors are at</b>	2.00 sigma
<b>Reference Wellbore</b>	Wellbore #1	<b>Database:</b>	Landmark
<b>Reference Design:</b>	Plan #1 (3-07-13)	<b>Offset TVD Reference:</b>	Offset Datum

Offset Design Maxey 24Q-HZ Pad Sec.24-T5N-R65W - Maxey 24P-332 - Wellbore #1 - Plan #1 (03-07-13)													Offset Site Error:	0.0 ft
Survey Program: 0-MWDD													Offset Well Error:	0.0 ft
Measured Depth (ft)	Vertical Depth (ft)	Measured Depth (ft)	Vertical Depth (ft)	Reference	Offset	Semi Major Axis	Highside Toolface (°)	Offset Wellbore Centre +N/-S (ft)	Offset Wellbore Centre +E/-W (ft)	Between Centres (ft)	Between Ellipses (ft)	Minimum Separation (ft)	Separation Factor	Warning
0.0	0.0	0.0	0.0	0.0	0.0	-89.99	-89.99	0.0	-30.6	30.6				
100.0	100.0	100.0	100.0	0.1	0.1	-89.99	-89.99	0.0	-30.6	30.6	30.4	0.22	136.352	
200.0	200.0	200.0	200.0	0.3	0.3	-89.99	-89.99	0.0	-30.6	30.6	30.0	0.67	45.451	
300.0	300.0	300.0	300.0	0.6	0.6	-89.99	-89.99	0.0	-30.6	30.6	29.5	1.12	27.270	
400.0	400.0	400.0	400.0	0.8	0.8	-89.99	-89.99	0.0	-30.6	30.6	29.1	1.57	19.479	
500.0	500.0	500.0	500.0	1.0	1.0	-89.99	-89.99	0.0	-30.6	30.6	28.6	2.02	15.150	
600.0	600.0	600.0	600.0	1.2	1.2	-89.99	-89.99	0.0	-30.6	30.6	28.2	2.47	12.396	
700.0	700.0	700.0	700.0	1.5	1.5	-89.99	-89.99	0.0	-30.6	30.6	27.7	2.92	10.489	
800.0	800.0	800.0	800.0	1.7	1.7	-89.99	-89.99	0.0	-30.6	30.6	27.3	3.37	9.090	
900.0	900.0	900.0	900.0	1.9	1.9	-89.99	-89.99	0.0	-30.6	30.6	26.8	3.82	8.021	
1,000.0	1,000.0	1,000.0	1,000.0	2.1	2.1	-89.99	-89.99	0.0	-30.6	30.6	26.4	4.27	7.176 CC, ES	
1,100.0	1,100.0	1,099.6	1,099.5	2.4	2.4	-87.06	-87.06	1.6	-31.3	31.3	26.6	4.72	6.642	
1,200.0	1,200.0	1,198.9	1,198.7	2.6	2.6	-79.11	-79.11	6.4	-33.2	33.9	28.7	5.17	6.555	
1,300.0	1,300.0	1,297.8	1,297.2	2.8	2.8	-68.57	-68.57	14.3	-36.5	39.3	33.7	5.62	6.985	
1,400.0	1,400.0	1,397.3	1,396.2	3.0	3.1	-59.55	-59.55	23.7	-40.3	46.9	40.8	6.08	7.712	
1,500.0	1,500.0	1,496.7	1,495.2	3.3	3.3	-53.16	-53.16	33.0	-44.1	55.3	48.8	6.54	8.455	
1,600.0	1,600.0	1,596.3	1,594.2	3.5	3.6	22.06	22.06	42.4	-47.9	62.6	55.7	6.96	8.998	
1,700.0	1,699.8	1,696.0	1,693.4	3.7	3.8	27.46	27.46	51.8	-51.7	67.2	59.9	7.39	9.100	
1,800.0	1,799.5	1,795.7	1,792.6	3.9	4.1	33.67	33.67	61.2	-55.5	69.5	61.6	7.82	8.881	
1,900.0	1,898.8	1,895.3	1,891.7	4.1	4.3	40.63	40.63	70.5	-59.4	70.7	62.4	8.28	8.537	
2,000.0	1,998.2	1,995.0	1,990.8	4.4	4.6	47.31	47.31	79.9	-63.2	72.8	64.1	8.75	8.323	
2,100.0	2,097.6	2,094.6	2,089.9	4.6	4.9	53.53	53.53	89.3	-67.0	75.9	66.7	9.24	8.216	
2,200.0	2,197.0	2,194.2	2,189.0	4.9	5.2	59.20	59.20	98.7	-70.8	79.8	70.1	9.75	8.192	
2,300.0	2,296.4	2,293.8	2,288.2	5.2	5.4	64.30	64.30	108.0	-74.6	84.5	74.2	10.27	8.227	
2,400.0	2,395.7	2,393.5	2,387.3	5.4	5.7	68.84	68.84	117.4	-78.4	89.7	78.9	10.80	8.306	
2,500.0	2,495.1	2,493.1	2,486.4	5.7	6.0	72.86	72.86	126.8	-82.3	95.4	84.1	11.34	8.414	
2,600.0	2,594.5	2,592.7	2,585.5	6.0	6.3	76.42	76.42	136.2	-86.1	101.6	89.7	11.89	8.543	
2,700.0	2,693.9	2,692.3	2,684.6	6.3	6.6	79.55	79.55	145.5	-89.9	108.1	95.6	12.45	8.684	
2,800.0	2,793.3	2,792.0	2,783.7	6.5	6.8	82.33	82.33	154.9	-93.7	114.9	101.9	13.00	8.833	
2,900.0	2,892.7	2,891.6	2,882.8	6.8	7.1	84.79	84.79	164.3	-97.5	121.9	108.3	13.56	8.984	
3,000.0	2,992.0	2,991.2	2,981.9	7.1	7.4	86.98	86.98	173.6	-101.3	129.1	115.0	14.13	9.137	
3,100.0	3,091.4	3,090.8	3,081.0	7.4	7.7	88.94	88.94	183.0	-105.1	136.5	121.8	14.69	9.288	
3,200.0	3,190.8	3,190.5	3,180.1	7.7	8.0	90.69	90.69	192.4	-109.0	144.0	128.7	15.26	9.437	
3,300.0	3,290.2	3,290.1	3,279.2	8.0	8.2	92.28	92.28	201.8	-112.8	151.7	135.8	15.82	9.584	
3,400.0	3,389.8	3,389.8	3,378.4	8.2	8.5	93.13	93.13	211.1	-116.6	159.3	143.0	16.31	9.765	
3,500.0	3,489.6	3,489.5	3,477.6	8.4	8.8	92.71	92.71	220.5	-120.4	166.7	150.0	16.77	9.945	
3,600.0	3,589.6	3,589.1	3,576.7	8.6	9.1	91.19	91.19	229.9	-124.2	174.1	156.9	17.18	10.133	
3,700.0	3,689.6	3,688.6	3,675.6	8.7	9.4	19.00	19.00	239.3	-128.0	181.7	164.8	16.89	10.756	
3,800.0	3,789.6	3,788.0	3,774.6	8.9	9.7	16.98	16.98	248.6	-131.8	189.4	172.0	17.41	10.884	
3,900.0	3,889.6	3,887.5	3,873.6	9.1	10.0	15.12	15.12	258.0	-135.7	197.4	179.5	17.92	11.016	
4,000.0	3,989.6	3,987.0	3,972.6	9.3	10.2	13.41	13.41	267.3	-139.5	205.6	187.2	18.44	11.149	
4,100.0	4,089.6	4,086.5	4,071.5	9.5	10.5	11.83	11.83	276.7	-143.3	214.0	195.0	18.97	11.284	
4,200.0	4,189.6	4,186.0	4,170.5	9.7	10.8	10.37	10.37	286.1	-147.1	222.5	203.0	19.49	11.418	
4,300.0	4,289.6	4,285.4	4,269.5	10.0	11.1	9.02	9.02	295.4	-150.9	231.1	211.1	20.01	11.552	
4,400.0	4,389.6	4,384.9	4,368.4	10.2	11.4	7.77	7.77	304.8	-154.7	239.9	219.4	20.53	11.685	
4,500.0	4,489.6	4,484.4	4,467.4	10.4	11.7	6.60	6.60	314.1	-158.5	248.8	227.7	21.05	11.817	
4,600.0	4,589.6	4,583.9	4,566.4	10.6	12.0	5.52	5.52	323.5	-162.3	257.7	236.2	21.57	11.946	
4,700.0	4,689.6	4,683.4	4,665.3	10.8	12.3	4.50	4.50	332.9	-166.1	266.8	244.7	22.10	12.074	
4,800.0	4,789.6	4,782.9	4,764.3	11.0	12.5	3.56	3.56	342.2	-169.9	275.9	253.3	22.62	12.200	
4,900.0	4,889.6	4,882.3	4,863.3	11.2	12.8	2.67	2.67	351.6	-173.8	285.1	262.0	23.14	12.322	
5,000.0	4,989.6	4,981.8	4,962.2	11.4	13.1	1.85	1.85	360.9	-177.6	294.4	270.7	23.66	12.443	

CC - Min centre to center distance or convergent point, SF - min separation factor, ES - min ellipse separation

<b>Company:</b>	PETROLEUM DEVELOPMENT CORP Weld County CO	<b>Local Co-ordinate Reference:</b>	Well Maxey 24Q-112
<b>Project:</b>	SEC.24-T5N-R65W	<b>TVD Reference:</b>	WELL @ 4650.0ft (RKB - 15')
<b>Reference Site:</b>	Maxey 24Q-HZ Pad Sec.24-T5N-R65W	<b>MD Reference:</b>	WELL @ 4650.0ft (RKB - 15')
<b>Site Error:</b>	0.0ft	<b>North Reference:</b>	True
<b>Reference Well:</b>	Maxey 24Q-112	<b>Survey Calculation Method:</b>	Minimum Curvature
<b>Well Error:</b>	0.0ft	<b>Output errors are at</b>	2.00 sigma
<b>Reference Wellbore</b>	Wellbore #1	<b>Database:</b>	Landmark
<b>Reference Design:</b>	Plan #1 (3-07-13)	<b>Offset TVD Reference:</b>	Offset Datum

Offset Design Maxey 24Q-HZ Pad Sec.24-T5N-R65W - Maxey 24P-332 - Wellbore #1 - Plan #1 (03-07-13)													Offset Site Error:	0.0 ft
Survey Program: 0-MWD													Offset Well Error:	0.0 ft
Measured Depth (ft)	Vertical Depth (ft)	Measured Depth (ft)	Vertical Depth (ft)	Reference	Offset	Semi Major Axis	Highside Toolface (°)	Offset Wellbore Centre +N/-S (ft)	Offset Wellbore Centre +E/-W (ft)	Between Centres (ft)	Between Ellipses (ft)	Minimum Separation (ft)	Separation Factor	Warning
5,100.0	5,089.6	5,081.3	5,061.2	11.6	13.4	1.07	1.07	370.3	-181.4	303.7	279.5	24.18	12.561	
5,200.0	5,189.6	5,180.8	5,160.2	11.8	13.7	0.33	0.33	379.7	-185.2	313.1	288.4	24.70	12.676	
5,300.0	5,289.6	5,286.2	5,265.0	12.1	14.0	-0.36	-0.36	389.1	-189.0	322.0	296.8	25.21	12.772	
5,400.0	5,389.6	5,397.7	5,376.4	12.3	14.2	-0.81	-0.81	395.5	-191.6	327.8	302.2	25.67	12.772	
5,500.0	5,489.6	5,509.7	5,488.3	12.5	14.4	-0.98	-0.98	398.0	-192.6	330.0	304.0	26.08	12.655	
5,600.0	5,589.6	5,611.0	5,589.6	12.7	14.5	-0.98	-0.98	398.0	-192.6	330.1	303.6	26.47	12.468	
5,700.0	5,689.6	5,711.0	5,689.6	12.9	14.7	-0.98	-0.98	398.0	-192.6	330.1	303.2	26.88	12.279	
5,800.0	5,789.6	5,811.0	5,789.6	13.1	14.9	-0.98	-0.98	398.0	-192.6	330.1	302.8	27.29	12.094	
5,858.8	5,848.3	5,869.7	5,848.3	13.2	15.0	-91.34	-91.34	398.0	-192.6	330.1	303.4	26.69	12.364	
5,900.0	5,889.6	5,911.0	5,889.6	13.3	15.1	-91.31	-91.31	398.0	-192.6	330.1	303.2	26.87	12.283	
6,000.0	5,989.1	6,010.5	5,989.1	13.5	15.3	-92.85	-92.85	398.0	-192.6	330.4	303.2	27.19	12.151	
6,100.0	6,086.6	6,108.9	6,087.5	13.6	15.5	-96.41	-96.41	398.0	-192.4	332.2	304.8	27.40	12.122	
6,200.0	6,180.3	6,212.5	6,190.6	13.7	15.6	-100.67	-100.67	398.0	-183.0	336.2	308.6	27.53	12.211	
6,300.0	6,268.8	6,320.1	6,295.3	13.9	15.7	-104.72	-104.72	397.8	-158.5	341.9	314.2	27.63	12.373	
6,400.0	6,350.5	6,432.1	6,399.5	14.1	15.8	-108.49	-108.49	397.6	-117.6	348.9	321.1	27.76	12.567	
6,500.0	6,423.9	6,548.7	6,500.4	14.6	15.9	-111.88	-111.88	397.3	-59.5	356.6	328.6	28.01	12.731	
6,600.0	6,487.8	6,669.9	6,594.6	15.3	16.0	-114.82	-114.82	396.9	16.5	364.6	336.0	28.55	12.770	
6,700.0	6,541.2	6,795.4	6,678.3	16.3	16.3	-117.26	-117.26	396.4	109.9	371.9	342.4	29.53	12.596	
6,800.0	6,583.1	6,924.8	6,747.3	17.6	17.4	-119.14	-119.14	395.8	219.2	378.1	347.0	31.17	12.132	
6,900.0	6,612.8	7,057.3	6,797.9	19.3	19.3	-120.42	-120.42	395.1	341.5	382.6	349.0	33.57	11.399	
7,000.0	6,629.8	7,191.9	6,826.9	21.1	21.6	-121.08	-121.08	394.4	472.7	385.0	348.2	36.75	10.476	
7,100.0	6,633.9	7,320.8	6,832.9	23.2	24.2	-121.13	-121.13	393.7	601.4	385.1	344.5	40.52	9.503	
7,200.0	6,633.1	7,420.8	6,831.3	25.4	26.3	-121.04	-121.04	393.1	701.4	384.7	340.4	44.30	8.683	
7,300.0	6,632.2	7,520.8	6,829.8	27.7	28.6	-120.95	-120.95	392.6	801.3	384.2	336.0	48.28	7.958	
7,400.0	6,631.3	7,620.8	6,828.2	30.1	31.0	-120.86	-120.86	392.0	901.3	383.8	331.4	52.43	7.321	
7,500.0	6,630.5	7,720.8	6,826.6	32.5	33.4	-120.77	-120.77	391.5	1,001.3	383.4	326.7	56.71	6.761	
7,600.0	6,629.6	7,820.8	6,825.0	35.0	35.9	-120.67	-120.67	390.9	1,101.3	383.0	321.9	61.09	6.270	
7,700.0	6,628.8	7,920.8	6,823.4	37.6	38.4	-120.58	-120.58	390.4	1,201.3	382.6	317.0	65.55	5.836	
7,800.0	6,627.9	8,020.8	6,821.8	40.2	40.9	-120.49	-120.49	389.9	1,301.3	382.2	312.1	70.09	5.453	
7,900.0	6,627.1	8,120.8	6,820.2	42.8	43.5	-120.40	-120.40	389.3	1,401.2	381.8	307.1	74.69	5.111	
8,000.0	6,626.2	8,220.8	6,818.6	45.4	46.1	-120.31	-120.31	388.8	1,501.2	381.4	302.0	79.34	4.807	
8,100.0	6,625.4	8,320.8	6,817.1	48.1	48.8	-120.22	-120.22	388.2	1,601.2	381.0	296.9	84.03	4.534	
8,200.0	6,624.5	8,420.8	6,815.5	50.7	51.4	-120.12	-120.12	387.7	1,701.2	380.5	291.8	88.76	4.287	
8,300.0	6,623.6	8,520.8	6,813.9	53.4	54.1	-120.03	-120.03	387.1	1,801.2	380.1	286.6	93.52	4.065	
8,400.0	6,622.8	8,620.8	6,812.3	56.1	56.8	-119.94	-119.94	386.6	1,901.2	379.7	281.4	98.31	3.862	
8,500.0	6,621.9	8,720.8	6,810.7	58.8	59.5	-119.85	-119.85	386.0	2,001.1	379.3	276.2	103.14	3.678	
8,600.0	6,621.1	8,820.8	6,809.1	61.6	62.2	-119.75	-119.75	385.5	2,101.1	378.9	270.9	107.98	3.509	
8,700.0	6,620.2	8,920.8	6,807.5	64.3	64.9	-119.66	-119.66	384.9	2,201.1	378.5	265.7	112.85	3.354	
8,800.0	6,619.4	9,020.8	6,805.9	67.0	67.6	-119.57	-119.57	384.4	2,301.1	378.1	260.4	117.74	3.212	
8,900.0	6,618.5	9,120.8	6,804.3	69.7	70.3	-119.47	-119.47	383.8	2,401.1	377.7	255.1	122.65	3.080	
9,000.0	6,617.7	9,220.8	6,802.8	72.5	73.1	-119.38	-119.38	383.3	2,501.1	377.3	249.8	127.57	2.958	
9,100.0	6,616.8	9,320.8	6,801.2	75.2	75.8	-119.29	-119.29	382.8	2,601.0	376.9	244.4	132.52	2.844	
9,200.0	6,615.9	9,420.8	6,799.6	78.0	78.6	-119.19	-119.19	382.2	2,701.0	376.5	239.1	137.47	2.739	
9,300.0	6,615.1	9,520.8	6,798.0	80.7	81.3	-119.10	-119.10	381.7	2,801.0	376.1	233.7	142.45	2.641	
9,400.0	6,614.2	9,620.8	6,796.4	83.5	84.1	-119.00	-119.00	381.1	2,901.0	375.7	228.3	147.44	2.549	
9,500.0	6,613.4	9,720.8	6,794.8	86.3	86.8	-118.91	-118.91	380.6	3,001.0	375.4	222.9	152.44	2.462	
9,600.0	6,612.5	9,820.8	6,793.2	89.0	89.6	-118.82	-118.82	380.0	3,101.0	375.0	217.5	157.46	2.381	
9,700.0	6,611.7	9,920.8	6,791.6	91.8	92.3	-118.72	-118.72	379.5	3,200.9	374.6	212.1	162.49	2.305	
9,800.0	6,610.8	10,020.8	6,790.1	94.6	95.1	-118.63	-118.63	378.9	3,300.9	374.2	206.7	167.53	2.234	
9,900.0	6,610.0	10,120.8	6,788.5	97.4	97.9	-118.53	-118.53	378.4	3,400.9	373.8	201.2	172.58	2.166	
10,000.0	6,609.1	10,220.8	6,786.9	100.1	100.6	-118.43	-118.43	377.8	3,500.9	373.4	195.8	177.65	2.102	

CC - Min centre to center distance or convergent point, SF - min separation factor, ES - min ellipse separation

<b>Company:</b>	PETROLEUM DEVELOPMENT CORP Weld County CO	<b>Local Co-ordinate Reference:</b>	Well Maxey 24Q-112
<b>Project:</b>	SEC.24-T5N-R65W	<b>TVD Reference:</b>	WELL @ 4650.0ft (RKB - 15')
<b>Reference Site:</b>	Maxey 24Q-HZ Pad Sec.24-T5N-R65W	<b>MD Reference:</b>	WELL @ 4650.0ft (RKB - 15')
<b>Site Error:</b>	0.0ft	<b>North Reference:</b>	True
<b>Reference Well:</b>	Maxey 24Q-112	<b>Survey Calculation Method:</b>	Minimum Curvature
<b>Well Error:</b>	0.0ft	<b>Output errors are at</b>	2.00 sigma
<b>Reference Wellbore</b>	Wellbore #1	<b>Database:</b>	Landmark
<b>Reference Design:</b>	Plan #1 (3-07-13)	<b>Offset TVD Reference:</b>	Offset Datum

<b>Offset Design</b> Maxey 24Q-HZ Pad Sec.24-T5N-R65W - Maxey 24P-332 - Wellbore #1 - Plan #1 (03-07-13)												<b>Offset Site Error:</b>	0.0 ft
Survey Program: 0-MWD												<b>Offset Well Error:</b>	0.0 ft
Measured Depth (ft)	Vertical Depth (ft)	Measured Depth (ft)	Vertical Depth (ft)	Reference	Offset	Highside Toolface (°)	Offset Wellbore Centre +N/-S (ft)	Offset Wellbore Centre +E/-W (ft)	Between Centres (ft)	Between Ellipses (ft)	Minimum Separation (ft)	Separation Factor	Warning
10,100.0	6,608.2	10,320.8	6,785.3	102.9	103.4	-118.34	377.3	3,600.9	373.0	190.3	182.73	2.041	
10,200.0	6,607.4	10,420.8	6,783.7	105.7	106.2	-118.24	376.8	3,700.9	372.6	184.8	187.81	1.984	
10,300.0	6,606.5	10,520.8	6,782.1	108.5	109.0	-118.15	376.2	3,800.8	372.2	179.3	192.91	1.930	
10,400.0	6,605.7	10,620.8	6,780.5	111.2	111.7	-118.05	375.7	3,900.8	371.9	173.8	198.02	1.878	
10,500.0	6,604.8	10,720.7	6,778.9	114.0	114.5	-117.95	375.1	4,000.8	371.5	168.3	203.14	1.829	
10,600.0	6,604.0	10,820.7	6,777.4	116.8	117.3	-117.86	374.6	4,100.8	371.1	162.8	208.27	1.782	
10,700.0	6,603.1	10,920.7	6,775.8	119.6	120.1	-117.76	374.0	4,200.8	370.7	157.3	213.41	1.737	
10,800.0	6,602.3	11,020.7	6,774.2	122.4	122.9	-117.66	373.5	4,300.7	370.3	151.8	218.57	1.694	
10,900.0	6,601.4	11,120.7	6,772.6	125.2	125.7	-117.56	372.9	4,400.7	370.0	146.2	223.73	1.654	
11,000.0	6,600.6	11,220.7	6,771.0	128.0	128.4	-117.47	372.4	4,500.7	369.6	140.7	228.90	1.615	
11,057.4	6,600.1	11,278.1	6,770.1	129.6	130.0	-117.41	372.1	4,558.1	369.4	137.5	231.86	1.593	
11,065.3	6,600.0	11,283.6	6,770.0	129.8	130.2	-117.41	372.0	4,563.6	369.3	137.1	232.21	1.591 SF	

<b>Company:</b>	PETROLEUM DEVELOPMENT CORP Weld County CO	<b>Local Co-ordinate Reference:</b>	Well Maxey 24Q-112
<b>Project:</b>	SEC.24-T5N-R65W	<b>TVD Reference:</b>	WELL @ 4650.0ft (RKB - 15')
<b>Reference Site:</b>	Maxey 24Q-HZ Pad Sec.24-T5N-R65W	<b>MD Reference:</b>	WELL @ 4650.0ft (RKB - 15')
<b>Site Error:</b>	0.0ft	<b>North Reference:</b>	True
<b>Reference Well:</b>	Maxey 24Q-112	<b>Survey Calculation Method:</b>	Minimum Curvature
<b>Well Error:</b>	0.0ft	<b>Output errors are at</b>	2.00 sigma
<b>Reference Wellbore</b>	Wellbore #1	<b>Database:</b>	Landmark
<b>Reference Design:</b>	Plan #1 (3-07-13)	<b>Offset TVD Reference:</b>	Offset Datum

Offset Design Maxey 24Q-HZ Pad Sec.24-T5N-R65W - Maxey 24Q-302 - Wellbore #1 - Plan #1 (3-07-13)													Offset Site Error:	0.0 ft
Survey Program: 0-MWD													Offset Well Error:	0.0 ft
Measured Depth (ft)	Vertical Depth (ft)	Measured Depth (ft)	Vertical Depth (ft)	Reference	Offset	Semi Major Axis	Highside Toolface (°)	Offset Wellbore Centre +N/-S (ft)	Offset Wellbore Centre +E/-W (ft)	Between Centres (ft)	Between Ellipses (ft)	Minimum Separation (ft)	Separation Factor	Warning
0.0	0.0	0.0	0.0	0.0	0.0	90.02	90.02	0.0	30.6	30.6				
100.0	100.0	100.0	100.0	0.1	0.1	90.02	90.02	0.0	30.6	30.6	30.4	0.22	136.352	
200.0	200.0	200.0	200.0	0.3	0.3	90.02	90.02	0.0	30.6	30.6	30.0	0.67	45.451	
300.0	300.0	300.0	300.0	0.6	0.6	90.02	90.02	0.0	30.6	30.6	29.5	1.12	27.270	
400.0	400.0	400.0	400.0	0.8	0.8	90.02	90.02	0.0	30.6	30.6	29.1	1.57	19.479	
500.0	500.0	500.0	500.0	1.0	1.0	90.02	90.02	0.0	30.6	30.6	28.6	2.02	15.150	
600.0	600.0	600.0	600.0	1.2	1.2	90.02	90.02	0.0	30.6	30.6	28.2	2.47	12.396	
700.0	700.0	700.0	700.0	1.5	1.5	90.02	90.02	0.0	30.6	30.6	27.7	2.92	10.489	
800.0	800.0	800.0	800.0	1.7	1.7	90.02	90.02	0.0	30.6	30.6	27.3	3.37	9.090	
900.0	900.0	900.0	900.0	1.9	1.9	90.02	90.02	0.0	30.6	30.6	26.8	3.82	8.021	
1,000.0	1,000.0	1,000.0	1,000.0	2.1	2.1	90.02	90.02	0.0	30.6	30.6	26.4	4.27	7.176	
1,100.0	1,100.0	1,100.0	1,100.0	2.4	2.4	90.02	90.02	0.0	30.6	30.6	25.9	4.72	6.493	
1,200.0	1,200.0	1,200.0	1,200.0	2.6	2.6	90.02	90.02	0.0	30.6	30.6	25.5	5.17	5.928	
1,300.0	1,300.0	1,300.0	1,300.0	2.8	2.8	90.02	90.02	0.0	30.6	30.6	25.0	5.62	5.454	
1,400.0	1,400.0	1,400.0	1,400.0	3.0	3.0	90.02	90.02	0.0	30.6	30.6	24.6	6.07	5.050	
1,500.0	1,500.0	1,500.0	1,500.0	3.3	3.3	90.02	90.02	0.0	30.6	30.6	24.1	6.52	4.702 CC, ES	
1,600.0	1,600.0	1,600.0	1,600.0	3.5	3.5	161.09	161.09	0.0	30.6	32.3	25.3	6.96	4.643	
1,700.0	1,699.8	1,699.8	1,699.8	3.7	3.7	163.67	163.67	0.0	30.6	37.3	29.9	7.38	5.052	
1,800.0	1,799.5	1,800.3	1,800.3	3.9	3.9	168.62	168.62	-1.4	29.5	44.8	37.0	7.77	5.764	
1,900.0	1,898.8	1,900.5	1,900.3	4.1	4.1	175.84	175.84	-5.4	26.2	53.3	45.2	8.15	6.542	
2,000.0	1,998.2	2,000.5	2,000.0	4.4	4.3	-175.92	-175.92	-12.1	20.6	61.5	53.0	8.56	7.190	
2,100.0	2,097.6	2,099.8	2,098.6	4.6	4.5	-167.72	-167.72	-20.7	13.5	70.3	61.3	8.99	7.823	
2,200.0	2,197.0	2,199.0	2,197.2	4.9	4.7	-161.35	-161.35	-29.4	6.3	80.2	70.7	9.44	8.495	
2,300.0	2,296.4	2,298.1	2,295.7	5.2	4.9	-156.41	-156.41	-38.1	-0.9	90.8	80.9	9.91	9.168	
2,400.0	2,395.7	2,397.3	2,394.2	5.4	5.2	-152.53	-152.53	-46.8	-8.1	102.0	91.6	10.39	9.819	
2,500.0	2,495.1	2,496.5	2,492.7	5.7	5.4	-149.42	-149.42	-55.5	-15.3	113.5	102.7	10.88	10.436	
2,600.0	2,594.5	2,595.6	2,591.2	6.0	5.6	-146.90	-146.90	-64.2	-22.5	125.3	114.0	11.38	11.015	
2,700.0	2,693.9	2,694.8	2,689.8	6.3	5.9	-144.80	-144.80	-72.8	-29.7	137.4	125.5	11.89	11.554	
2,800.0	2,793.3	2,794.0	2,788.3	6.5	6.2	-143.05	-143.05	-81.5	-36.9	149.5	137.1	12.40	12.056	
2,900.0	2,892.7	2,893.1	2,886.8	6.8	6.4	-141.56	-141.56	-90.2	-44.0	161.8	148.9	12.92	12.521	
3,000.0	2,992.0	2,992.3	2,985.3	7.1	6.7	-140.28	-140.28	-98.9	-51.2	174.2	160.7	13.45	12.953	
3,100.0	3,091.4	3,091.4	3,083.8	7.4	7.0	-139.17	-139.17	-107.6	-58.4	186.6	172.6	13.98	13.353	
3,200.0	3,190.8	3,190.6	3,182.4	7.7	7.2	-138.20	-138.20	-116.2	-65.6	199.1	184.6	14.51	13.726	
3,300.0	3,290.2	3,289.8	3,280.9	8.0	7.5	-137.36	-137.36	-124.9	-72.8	211.7	196.6	15.04	14.072	
3,400.0	3,389.8	3,389.1	3,379.5	8.2	7.8	-136.39	-136.39	-133.6	-80.0	222.8	207.3	15.53	14.344	
3,500.0	3,489.6	3,488.5	3,478.3	8.4	8.1	-134.90	-134.90	-142.3	-87.2	231.6	215.5	16.01	14.464	
3,600.0	3,589.6	3,587.9	3,577.0	8.6	8.4	-132.88	-132.88	-151.0	-94.4	238.1	221.6	16.47	14.458	
3,700.0	3,689.6	3,687.2	3,675.7	8.7	8.7	-159.45	-159.45	-159.7	-101.6	243.6	227.3	16.29	14.955	
3,800.0	3,789.6	3,786.6	3,774.4	8.9	9.0	161.70	161.70	-168.4	-108.8	249.5	232.7	16.74	14.900	
3,900.0	3,889.6	3,885.9	3,873.2	9.1	9.3	163.85	163.85	-177.1	-116.0	255.7	238.5	17.21	14.861	
4,000.0	3,989.6	3,985.3	3,971.9	9.3	9.5	165.90	165.90	-185.8	-123.2	262.3	244.6	17.68	14.836	
4,100.0	4,089.6	4,084.6	4,070.6	9.5	9.8	167.84	167.84	-194.5	-130.4	269.2	251.0	18.16	14.824	
4,200.0	4,189.6	4,184.0	4,169.3	9.7	10.1	169.69	169.69	-203.2	-137.6	276.4	257.8	18.65	14.822	
4,300.0	4,289.6	4,283.3	4,268.0	10.0	10.4	171.44	171.44	-211.9	-144.9	283.9	264.7	19.14	14.829	
4,400.0	4,389.6	4,382.7	4,366.7	10.2	10.7	173.10	173.10	-220.6	-152.1	291.6	272.0	19.64	14.845	
4,500.0	4,489.6	4,482.0	4,465.4	10.4	11.0	174.67	174.67	-229.3	-159.3	299.6	279.4	20.15	14.867	
4,600.0	4,589.6	4,581.4	4,564.1	10.6	11.3	176.16	176.16	-238.0	-166.5	307.7	287.1	20.66	14.895	
4,700.0	4,689.6	4,680.7	4,662.8	10.8	11.6	177.57	177.57	-246.7	-173.7	316.1	294.9	21.17	14.929	
4,800.0	4,789.6	4,788.3	4,769.9	11.0	11.9	178.84	178.84	-254.9	-180.4	323.5	301.9	21.66	14.936	
4,900.0	4,889.6	4,897.6	4,879.0	11.2	12.1	179.60	179.60	-260.0	-184.7	328.2	306.1	22.12	14.839	
5,000.0	4,989.6	5,007.3	4,988.6	11.4	12.3	179.89	179.89	-262.0	-186.3	330.0	307.4	22.55	14.635	

CC - Min centre to center distance or convergent point, SF - min separation factor, ES - min ellipse separation

<b>Company:</b>	PETROLEUM DEVELOPMENT CORP Weld County CO	<b>Local Co-ordinate Reference:</b>	Well Maxey 24Q-112
<b>Project:</b>	SEC.24-T5N-R65W	<b>TVD Reference:</b>	WELL @ 4650.0ft (RKB - 15')
<b>Reference Site:</b>	Maxey 24Q-HZ Pad Sec.24-T5N-R65W	<b>MD Reference:</b>	WELL @ 4650.0ft (RKB - 15')
<b>Site Error:</b>	0.0ft	<b>North Reference:</b>	True
<b>Reference Well:</b>	Maxey 24Q-112	<b>Survey Calculation Method:</b>	Minimum Curvature
<b>Well Error:</b>	0.0ft	<b>Output errors are at</b>	2.00 sigma
<b>Reference Wellbore</b>	Wellbore #1	<b>Database:</b>	Landmark
<b>Reference Design:</b>	Plan #1 (3-07-13)	<b>Offset TVD Reference:</b>	Offset Datum

Offset Design Maxey 24Q-HZ Pad Sec.24-T5N-R65W - Maxey 24Q-302 - Wellbore #1 - Plan #1 (3-07-13)												Offset Site Error: 0.0 ft	
Survey Program: 0-MWDD												Offset Well Error: 0.0 ft	
Reference		Offset		Semi Major Axis		Highside Toolface (°)	Offset Wellbore Centre		Distance		Minimum Separation (ft)	Separation Factor	Warning
Measured Depth (ft)	Vertical Depth (ft)	Measured Depth (ft)	Vertical Depth (ft)	Reference	Offset		+N/-S (ft)	+E/-W (ft)	Between Centres (ft)	Between Ellipses (ft)			
5,100.0	5,089.6	5,108.3	5,089.6	11.6	12.5	179.89	-262.0	-186.4	330.0	307.1	22.95	14.377	
5,200.0	5,189.6	5,208.3	5,189.6	11.8	12.7	179.89	-262.0	-186.4	330.0	306.7	23.36	14.130	
5,300.0	5,289.6	5,308.3	5,289.6	12.1	12.8	179.89	-262.0	-186.4	330.0	306.3	23.76	13.890	
5,400.0	5,389.6	5,408.3	5,389.6	12.3	13.0	179.89	-262.0	-186.4	330.0	305.8	24.16	13.657	
5,500.0	5,489.6	5,508.3	5,489.6	12.5	13.2	179.89	-262.0	-186.4	330.0	305.4	24.57	13.432	
5,600.0	5,589.6	5,608.3	5,589.6	12.7	13.4	179.89	-262.0	-186.4	330.0	305.0	24.98	13.212	
5,700.0	5,689.6	5,708.3	5,689.6	12.9	13.6	179.89	-262.0	-186.4	330.0	304.6	25.39	12.999	
5,800.0	5,789.6	5,808.3	5,789.6	13.1	13.7	179.89	-262.0	-186.4	330.0	304.2	25.80	12.793	
5,900.0	5,889.6	5,908.3	5,889.6	13.3	13.9	89.64	-262.0	-186.4	330.0	303.6	26.43	12.487	
5,939.9	5,929.4	5,948.1	5,929.4	13.4	14.0	90.00	-262.0	-186.4	330.0	303.4	26.56	12.423	
6,000.0	5,989.1	6,007.8	5,989.1	13.5	14.1	91.20	-262.0	-186.4	330.1	303.3	26.75	12.337	
6,100.0	6,086.6	6,105.9	6,087.2	13.6	14.3	94.82	-262.0	-186.1	331.3	304.3	27.00	12.271	
6,200.0	6,180.3	6,208.1	6,188.9	13.7	14.4	99.11	-262.1	-176.9	334.5	307.4	27.15	12.322	
6,300.0	6,268.8	6,314.2	6,292.2	13.9	14.5	103.24	-262.2	-153.1	339.6	312.4	27.25	12.465	
6,400.0	6,350.5	6,424.5	6,395.0	14.1	14.6	107.12	-262.4	-113.4	346.2	318.9	27.35	12.659	
6,500.0	6,423.9	6,539.3	6,494.8	14.6	14.7	110.64	-262.7	-56.8	353.8	326.2	27.57	12.835	
6,600.0	6,487.8	6,658.7	6,588.4	15.3	14.7	113.75	-263.1	17.2	361.8	333.7	28.06	12.892	
6,700.0	6,541.2	6,782.6	6,672.1	16.3	15.0	116.37	-263.6	108.3	369.4	340.4	29.04	12.722	
6,800.0	6,583.1	6,910.6	6,741.9	17.6	16.2	118.45	-264.2	215.4	376.2	345.5	30.68	12.260	
6,900.0	6,612.8	7,042.0	6,793.9	19.3	18.0	119.95	-264.8	335.9	381.4	348.3	33.13	11.514	
7,000.0	6,629.8	7,175.9	6,825.0	21.1	20.3	120.84	-265.5	466.0	384.7	348.3	36.36	10.578	
7,100.0	6,633.9	7,308.2	6,833.0	23.2	23.0	121.08	-266.2	597.8	385.6	345.4	40.24	9.584	
7,200.0	6,633.1	7,408.2	6,831.4	25.4	25.1	120.98	-266.7	697.8	385.3	341.2	44.02	8.753	
7,300.0	6,632.2	7,508.1	6,829.8	27.7	27.4	120.89	-267.3	797.8	384.9	336.9	48.01	8.018	
7,400.0	6,631.3	7,608.1	6,828.2	30.1	29.8	120.79	-267.8	897.8	384.6	332.4	52.17	7.372	
7,500.0	6,630.5	7,708.1	6,826.6	32.5	32.2	120.70	-268.3	997.7	384.2	327.8	56.45	6.806	
7,600.0	6,629.6	7,808.1	6,825.0	35.0	34.7	120.60	-268.9	1,097.7	383.9	323.0	60.85	6.308	
7,700.0	6,628.8	7,908.1	6,823.4	37.6	37.3	120.50	-269.4	1,197.7	383.5	318.2	65.33	5.870	
7,800.0	6,627.9	8,008.1	6,821.8	40.2	39.8	120.41	-269.9	1,297.7	383.2	313.3	69.88	5.483	
7,900.0	6,627.1	8,108.1	6,820.2	42.8	42.5	120.31	-270.5	1,397.7	382.8	308.3	74.50	5.139	
8,000.0	6,626.2	8,208.1	6,818.7	45.4	45.1	120.21	-271.0	1,497.7	382.5	303.3	79.16	4.832	
8,100.0	6,625.4	8,308.1	6,817.1	48.1	47.7	120.11	-271.5	1,597.6	382.2	298.3	83.87	4.556	
8,200.0	6,624.5	8,408.1	6,815.5	50.7	50.4	120.02	-272.1	1,697.6	381.8	293.2	88.62	4.308	
8,300.0	6,623.6	8,508.1	6,813.9	53.4	53.1	119.92	-272.6	1,797.6	381.5	288.1	93.40	4.084	
8,400.0	6,622.8	8,608.1	6,812.3	56.1	55.8	119.82	-273.1	1,897.6	381.1	282.9	98.21	3.881	
8,500.0	6,621.9	8,708.1	6,810.7	58.8	58.5	119.72	-273.7	1,997.6	380.8	277.8	103.05	3.695	
8,600.0	6,621.1	8,808.1	6,809.1	61.6	61.2	119.62	-274.2	2,097.6	380.5	272.6	107.92	3.525	
8,700.0	6,620.2	8,908.1	6,807.5	64.3	63.9	119.53	-274.7	2,197.5	380.1	267.3	112.81	3.370	
8,800.0	6,619.4	9,008.1	6,806.0	67.0	66.7	119.43	-275.3	2,297.5	379.8	262.1	117.72	3.226	
8,900.0	6,618.5	9,108.1	6,804.4	69.7	69.4	119.33	-275.8	2,397.5	379.5	256.8	122.65	3.094	
9,000.0	6,617.7	9,208.1	6,802.8	72.5	72.1	119.23	-276.3	2,497.5	379.1	251.5	127.59	2.971	
9,100.0	6,616.8	9,308.1	6,801.2	75.2	74.9	119.13	-276.9	2,597.5	378.8	246.3	132.56	2.858	
9,200.0	6,615.9	9,408.1	6,799.6	78.0	77.6	119.03	-277.4	2,697.5	378.5	240.9	137.54	2.752	
9,300.0	6,615.1	9,508.1	6,798.0	80.7	80.4	118.93	-277.9	2,797.4	378.2	235.6	142.53	2.653	
9,400.0	6,614.2	9,608.1	6,796.4	83.5	83.1	118.83	-278.5	2,897.4	377.8	230.3	147.55	2.561	
9,500.0	6,613.4	9,708.1	6,794.8	86.3	85.9	118.73	-279.0	2,997.4	377.5	224.9	152.57	2.474	
9,600.0	6,612.5	9,808.1	6,793.2	89.0	88.7	118.63	-279.5	3,097.4	377.2	219.6	157.61	2.393	
9,700.0	6,611.7	9,908.1	6,791.7	91.8	91.4	118.53	-280.1	3,197.4	376.9	214.2	162.66	2.317	
9,800.0	6,610.8	10,008.1	6,790.1	94.6	94.2	118.43	-280.6	3,297.4	376.5	208.8	167.73	2.245	
9,900.0	6,610.0	10,108.1	6,788.5	97.4	97.0	118.33	-281.2	3,397.3	376.2	203.4	172.80	2.177	
10,000.0	6,609.1	10,208.1	6,786.9	100.1	99.7	118.23	-281.7	3,497.3	375.9	198.0	177.89	2.113	

CC - Min centre to center distance or convergent point, SF - min separation factor, ES - min ellipse separation

<b>Company:</b>	PETROLEUM DEVELOPMENT CORP Weld County CO	<b>Local Co-ordinate Reference:</b>	Well Maxey 24Q-112
<b>Project:</b>	SEC.24-T5N-R65W	<b>TVD Reference:</b>	WELL @ 4650.0ft (RKB - 15')
<b>Reference Site:</b>	Maxey 24Q-HZ Pad Sec.24-T5N-R65W	<b>MD Reference:</b>	WELL @ 4650.0ft (RKB - 15')
<b>Site Error:</b>	0.0ft	<b>North Reference:</b>	True
<b>Reference Well:</b>	Maxey 24Q-112	<b>Survey Calculation Method:</b>	Minimum Curvature
<b>Well Error:</b>	0.0ft	<b>Output errors are at</b>	2.00 sigma
<b>Reference Wellbore</b>	Wellbore #1	<b>Database:</b>	Landmark
<b>Reference Design:</b>	Plan #1 (3-07-13)	<b>Offset TVD Reference:</b>	Offset Datum

Offset Design												Maxey 24Q-HZ Pad Sec.24-T5N-R65W - Maxey 24Q-302 - Wellbore #1 - Plan #1 (3-07-13)		Offset Site Error:		0.0 ft	
Survey Program:												0-MWD		Offset Well Error:		0.0 ft	
Reference		Offset		Semi Major Axis			Distance						Warning				
Measured Depth	Vertical Depth	Measured Depth	Vertical Depth	Reference	Offset	Highside Toolface	Offset Wellbore Centre		Between Centres	Between Ellipses	Minimum Separation	Separation Factor					
(ft)	(ft)	(ft)	(ft)	(ft)	(ft)	(°)	+N/-S (ft)	+E/-W (ft)	(ft)	(ft)	(ft)						
10,100.0	6,608.2	10,308.1	6,785.3	102.9	102.5	118.13	-282.2	3,597.3	375.6	192.6	182.99	2.052					
10,200.0	6,607.4	10,408.1	6,783.7	105.7	105.3	118.03	-282.8	3,697.3	375.3	187.2	188.11	1.995					
10,300.0	6,606.5	10,508.1	6,782.1	108.5	108.1	117.93	-283.3	3,797.3	374.9	181.7	193.23	1.940					
10,400.0	6,605.7	10,608.1	6,780.5	111.2	110.9	117.83	-283.8	3,897.3	374.6	176.3	198.36	1.889					
10,500.0	6,604.8	10,708.1	6,779.0	114.0	113.6	117.72	-284.4	3,997.2	374.3	170.8	203.51	1.839					
10,600.0	6,604.0	10,808.1	6,777.4	116.8	116.4	117.62	-284.9	4,097.2	374.0	165.3	208.66	1.792					
10,700.0	6,603.1	10,908.1	6,775.8	119.6	119.2	117.52	-285.4	4,197.2	373.7	159.9	213.83	1.748					
10,800.0	6,602.3	11,008.1	6,774.2	122.4	122.0	117.42	-286.0	4,297.2	373.4	154.4	219.00	1.705					
10,900.0	6,601.4	11,108.1	6,772.6	125.2	124.8	117.32	-286.5	4,397.2	373.1	148.9	224.19	1.664					
11,000.0	6,600.6	11,208.0	6,771.0	128.0	127.6	117.21	-287.0	4,497.2	372.8	143.4	229.39	1.625					
11,064.8	6,600.0	11,271.8	6,770.0	129.8	129.3	117.15	-287.4	4,560.9	372.6	139.8	232.72	1.601					
11,065.3	6,600.0	11,271.8	6,770.0	129.8	129.3	117.15	-287.4	4,560.9	372.6	139.8	232.74	1.601SF					



<b>Company:</b>	PETROLEUM DEVELOPMENT CORP Weld County CO	<b>Local Co-ordinate Reference:</b>	Well Maxey 24Q-112
<b>Project:</b>	SEC.24-T5N-R65W	<b>TVD Reference:</b>	WELL @ 4650.0ft (RKB - 15')
<b>Reference Site:</b>	Maxey 24Q-HZ Pad Sec.24-T5N-R65W	<b>MD Reference:</b>	WELL @ 4650.0ft (RKB - 15')
<b>Site Error:</b>	0.0ft	<b>North Reference:</b>	True
<b>Reference Well:</b>	Maxey 24Q-112	<b>Survey Calculation Method:</b>	Minimum Curvature
<b>Well Error:</b>	0.0ft	<b>Output errors are at</b>	2.00 sigma
<b>Reference Wellbore</b>	Wellbore #1	<b>Database:</b>	Landmark
<b>Reference Design:</b>	Plan #1 (3-07-13)	<b>Offset TVD Reference:</b>	Offset Datum

<b>Offset Design</b> Maxey 24Q-HZ Pad Sec.24-T5N-R65W - Maxey 44-24 (Exist.) - Wellbore #1 - Wellbore #1												<b>Offset Site Error:</b>	0.0 ft
Survey Program: 7300-MWD												<b>Offset Well Error:</b>	0.0 ft
Reference		Offset		Semi Major Axis			Distance						
Measured Depth (ft)	Vertical Depth (ft)	Measured Depth (ft)	Vertical Depth (ft)	Reference (ft)	Offset (ft)	Highside Toolface (°)	Offset Wellbore Centre +N/-S (ft)	+E/-W (ft)	Between Centres (ft)	Between Ellipses (ft)	Minimum Separation (ft)	Separation Factor	Warning
7,300.0	6,632.2	6,614.2	6,614.2	27.7	7.4	-98.82	113.0	1,794.2	999.1	964.3	34.78	28.724	
7,400.0	6,631.3	6,613.3	6,613.3	30.1	7.4	-97.95	113.0	1,794.2	899.3	862.1	37.20	24.171	
7,500.0	6,630.5	6,612.5	6,612.5	32.5	7.4	-97.07	113.0	1,794.2	799.5	759.8	39.70	20.140	
7,600.0	6,629.6	6,611.6	6,611.6	35.0	7.4	-96.19	113.0	1,794.2	699.8	657.5	42.24	16.564	
7,700.0	6,628.8	6,610.8	6,610.8	37.6	7.4	-95.31	113.0	1,794.2	600.1	555.3	44.84	13.385	
7,800.0	6,627.9	6,609.9	6,609.9	40.2	7.4	-94.43	113.0	1,794.2	500.6	453.2	47.46	10.548	
7,900.0	6,627.1	6,609.1	6,609.1	42.8	7.4	-93.54	113.0	1,794.2	401.4	351.3	50.11	8.010	
8,000.0	6,626.2	6,608.2	6,608.2	45.4	7.4	-92.65	113.0	1,794.2	302.6	249.9	52.78	5.734	
8,100.0	6,625.4	6,607.4	6,607.4	48.1	7.4	-91.76	113.0	1,794.2	205.1	149.7	55.46	3.698	
8,200.0	6,624.5	6,606.5	6,606.5	50.7	7.4	-90.87	113.0	1,794.2	112.0	53.9	58.15	1.926	
8,297.6	6,623.7	6,605.7	6,605.7	53.4	7.4	-90.00	113.0	1,794.2	55.0	-5.8	60.79	0.904	Level 1, CC
8,300.0	6,623.6	6,605.6	6,605.6	53.4	7.4	-89.98	113.0	1,794.2	55.0	-5.8	60.85	0.904	Level 1, ES, SF
8,400.0	6,622.8	6,604.8	6,604.8	56.1	7.4	-89.09	113.0	1,794.2	116.2	52.7	63.54	1.829	
8,500.0	6,621.9	6,603.9	6,603.9	58.8	7.4	-88.20	113.0	1,794.2	209.7	143.5	66.24	3.166	
8,600.0	6,621.1	6,603.1	6,603.1	61.6	7.4	-87.31	113.0	1,794.2	307.3	238.4	68.92	4.459	
8,700.0	6,620.2	6,602.2	6,602.2	64.3	7.4	-86.42	113.0	1,794.2	406.1	334.5	71.60	5.672	
8,800.0	6,619.4	6,601.4	6,601.4	67.0	7.4	-85.53	113.0	1,794.2	505.4	431.1	74.26	6.805	
8,900.0	6,618.5	6,600.5	6,600.5	69.7	7.4	-84.65	113.0	1,794.2	604.9	527.9	76.91	7.864	
9,000.0	6,617.7	6,599.7	6,599.7	72.5	7.4	-83.76	113.0	1,794.2	704.5	625.0	79.54	8.857	
9,100.0	6,616.8	6,598.8	6,598.8	75.2	7.4	-82.88	113.0	1,794.2	804.2	722.1	82.16	9.789	
9,200.0	6,615.9	6,597.9	6,597.9	78.0	7.4	-82.01	113.0	1,794.2	904.0	819.3	84.75	10.667	

<b>Company:</b>	PETROLEUM DEVELOPMENT CORP Weld County CO	<b>Local Co-ordinate Reference:</b>	Well Maxey 24Q-112
<b>Project:</b>	SEC.24-T5N-R65W	<b>TVD Reference:</b>	WELL @ 4650.0ft (RKB - 15')
<b>Reference Site:</b>	Maxey 24Q-HZ Pad Sec.24-T5N-R65W	<b>MD Reference:</b>	WELL @ 4650.0ft (RKB - 15')
<b>Site Error:</b>	0.0ft	<b>North Reference:</b>	True
<b>Reference Well:</b>	Maxey 24Q-112	<b>Survey Calculation Method:</b>	Minimum Curvature
<b>Well Error:</b>	0.0ft	<b>Output errors are at</b>	2.00 sigma
<b>Reference Wellbore</b>	Wellbore #1	<b>Database:</b>	Landmark
<b>Reference Design:</b>	Plan #1 (3-07-13)	<b>Offset TVD Reference:</b>	Offset Datum

Offset Design Maxey 24Q-HZ Pad Sec.24-T5N-R65W - Maxey Hoff 1 (Exist.) - Wellbore #1 - Wellbore #1													Offset Site Error: 0.0 ft	
Survey Program: 7300-MWD													Offset Well Error: 0.0 ft	
Reference		Offset		Semi Major Axis			Distance							Warning
Measured Depth	Vertical Depth	Measured Depth	Vertical Depth	Reference	Offset	Highside Toolface	Offset Wellbore Centre		Between Centres	Between Ellipses	Minimum Separation	Separation Factor		
(ft)	(ft)	(ft)	(ft)	(ft)	(ft)	(°)	+N/-S (ft)	+E/-W (ft)	(ft)	(ft)	(ft)			
8,600.0	6,621.1	6,602.1	6,602.1	61.6	7.4	-92.51	233.4	3,028.5	948.8	879.9	68.90	13.770		
8,700.0	6,620.2	6,601.2	6,601.2	64.3	7.4	-92.24	233.4	3,028.5	850.8	779.2	71.64	11.877		
8,800.0	6,619.4	6,600.4	6,600.4	67.0	7.4	-91.97	233.4	3,028.5	753.4	679.1	74.38	10.130		
8,900.0	6,618.5	6,599.5	6,599.5	69.7	7.4	-91.70	233.4	3,028.5	656.8	579.7	77.12	8.516		
9,000.0	6,617.7	6,598.7	6,598.7	72.5	7.4	-91.43	233.4	3,028.5	561.4	481.5	79.88	7.028		
9,100.0	6,616.8	6,597.8	6,597.8	75.2	7.4	-91.16	233.4	3,028.5	467.9	385.3	82.63	5.662		
9,200.0	6,615.9	6,596.9	6,596.9	78.0	7.4	-90.89	233.4	3,028.5	377.7	292.3	85.39	4.424		
9,300.0	6,615.1	6,596.1	6,596.1	80.7	7.4	-90.62	233.4	3,028.5	294.0	205.8	88.15	3.335		
9,400.0	6,614.2	6,595.2	6,595.2	83.5	7.4	-90.35	233.4	3,028.5	224.0	133.1	90.92	2.464		
9,500.0	6,613.4	6,594.4	6,594.4	86.3	7.4	-90.08	233.4	3,028.5	184.2	90.5	93.68	1.966		
9,531.2	6,613.1	6,594.1	6,594.1	87.1	7.4	-90.00	233.4	3,028.5	181.5	87.0	94.54	1.920 CC, ES, SF		
9,600.0	6,612.5	6,593.5	6,593.5	89.0	7.4	-89.81	233.4	3,028.5	194.1	97.6	96.45	2.012		
9,700.0	6,611.7	6,592.7	6,592.7	91.8	7.4	-89.54	233.4	3,028.5	247.8	148.6	99.21	2.498		
9,800.0	6,610.8	6,591.8	6,591.8	94.6	7.4	-89.27	233.4	3,028.5	324.3	222.3	101.98	3.180		
9,900.0	6,610.0	6,591.0	6,591.0	97.4	7.4	-89.00	233.4	3,028.5	411.0	306.2	104.75	3.923		
10,000.0	6,609.1	6,590.1	6,590.1	100.1	7.4	-88.73	233.4	3,028.5	502.6	395.1	107.52	4.675		
10,100.0	6,608.2	6,589.2	6,589.2	102.9	7.4	-88.47	233.4	3,028.5	597.0	486.7	110.28	5.413		
10,200.0	6,607.4	6,588.4	6,588.4	105.7	7.4	-88.20	233.4	3,028.5	692.9	579.8	113.05	6.129		
10,300.0	6,606.5	6,587.5	6,587.5	108.5	7.4	-87.93	233.4	3,028.5	789.8	674.0	115.81	6.820		
10,400.0	6,605.7	6,586.7	6,586.7	111.2	7.4	-87.66	233.4	3,028.5	887.5	768.9	118.57	7.484		
10,500.0	6,604.8	6,585.8	6,585.8	114.0	7.4	-87.39	233.4	3,028.5	985.5	864.2	121.33	8.123		

<b>Company:</b>	PETROLEUM DEVELOPMENT CORP Weld County CO	<b>Local Co-ordinate Reference:</b>	Well Maxey 24Q-112
<b>Project:</b>	SEC.24-T5N-R65W	<b>TVD Reference:</b>	WELL @ 4650.0ft (RKB - 15')
<b>Reference Site:</b>	Maxey 24Q-HZ Pad Sec.24-T5N-R65W	<b>MD Reference:</b>	WELL @ 4650.0ft (RKB - 15')
<b>Site Error:</b>	0.0ft	<b>North Reference:</b>	True
<b>Reference Well:</b>	Maxey 24Q-112	<b>Survey Calculation Method:</b>	Minimum Curvature
<b>Well Error:</b>	0.0ft	<b>Output errors are at</b>	2.00 sigma
<b>Reference Wellbore</b>	Wellbore #1	<b>Database:</b>	Landmark
<b>Reference Design:</b>	Plan #1 (3-07-13)	<b>Offset TVD Reference:</b>	Offset Datum

Reference Depths are relative to WELL @ 4650.0ft (RKB - 15')

Offset Depths are relative to Offset Datum

Central Meridian is -105.500000 °

Coordinates are relative to: Maxey 24Q-112

Coordinate System is US State Plane 1983, Colorado Northern Zone

Grid Convergence at Surface is: 0.57°



Coordinates are relative to: Maxey 24Q-112  
Coordinate System is US State Plane 1983, Colorado Northern Zone  
Grid Convergence at Surface is: 0.57°

