



Ursa Operating Company, LLC

Rockies Region

McLin C

McLin C6

Wellbore #1

Plan: Design #1

Standard Planning Report

25 June, 2013



Database:	EDM 2003.21 Single User Db	Local Co-ordinate Reference:	Well McLin C6
Company:	Ursa Operating Company, LLC	TVD Reference:	McLin C6 @ 5741.4ft (Original Well Elev)
Project:	Rockies Region	MD Reference:	McLin C6 @ 5741.4ft (Original Well Elev)
Site:	McLin C	North Reference:	True
Well:	McLin C6	Survey Calculation Method:	Minimum Curvature
Wellbore:	Wellbore #1		
Design:	Design #1		

Project	Rockies Region		
Map System:	US State Plane 1983	System Datum:	Mean Sea Level
Geo Datum:	North American Datum 1983		
Map Zone:	Colorado Central Zone		

Site		McLin C			
Site Position:		Northing:	494,718.69 m	Latitude:	39° 31' 30.857 N
From:	Lat/Long	Easting:	733,248.01 m	Longitude:	107° 36' 25.703 W
Position Uncertainty:	0.0 ft	Slot Radius:	in	Grid Convergence:	-1.33 °

Well	McLin C6, SHL LAT: 39.525206926 LONG: -107.607157983					
Well Position	+N/-S	-11.4 ft	Northing:	494,715.25 m	Latitude:	39° 31' 30.745 N
	+E/-W	-5.2 ft	Easting:	733,246.35 m	Longitude:	107° 36' 25.769 W
Position Uncertainty		0.0 ft	Wellhead Elevation:	5,741.4 ft	Ground Level:	5,726.0 ft

Wellbore	Wellbore #1				
Magnetics	Model Name	Sample Date	Declination (°)	Dip Angle (°)	Field Strength (nT)
	IGRF200510	6/24/2013	9.88	65.79	52,152

Design	Design #1			
Audit Notes:				
Version:	Phase:	PROTOTYPE	Tie On Depth:	0.0
Vertical Section:	Depth From (TVD)	+N/-S (ft)	+E/-W (ft)	Direction (°)
	0.0	0.0	0.0	270.78

Plan Sections										
Measured Depth (ft)	Inclination (°)	Azimuth (°)	Vertical Depth (ft)	+N/-S (ft)	+E/-W (ft)	Dogleg Rate (°/100ft)	Build Rate (°/100ft)	Turn Rate (°/100ft)	TFO (°)	Target
0.0	0.00	0.00	0.0	0.0	0.0	0.00	0.00	0.00	0.00	
1,200.0	0.00	0.00	1,200.0	0.0	0.0	0.00	0.00	0.00	0.00	
1,627.6	14.97	270.78	1,622.8	0.8	-55.5	3.50	3.50	0.00	270.78	
4,318.3	14.97	270.78	4,222.2	10.2	-750.4	0.00	0.00	0.00	0.00	
4,746.0	0.00	0.00	4,645.0	11.0	-805.9	3.50	-3.50	0.00	180.00	C6 TGT
7,343.0	0.00	0.00	7,242.0	11.0	-805.9	0.00	0.00	0.00	0.00	C6 BHL TGT

Database:	EDM 2003.21 Single User Db	Local Co-ordinate Reference:	Well McLin C6
Company:	Ursa Operating Company, LLC	TVD Reference:	McLin C6 @ 5741.4ft (Original Well Elev)
Project:	Rockies Region	MD Reference:	McLin C6 @ 5741.4ft (Original Well Elev)
Site:	McLin C	North Reference:	True
Well:	McLin C6	Survey Calculation Method:	Minimum Curvature
Wellbore:	Wellbore #1		
Design:	Design #1		

Planned Survey									
Measured Depth (ft)	Inclination (°)	Azimuth (°)	Vertical Depth (ft)	+N/-S (ft)	+E/-W (ft)	Vertical Section (ft)	Dogleg Rate (°/100ft)	Build Rate (°/100ft)	Turn Rate (°/100ft)
0.0	0.00	0.00	0.0	0.0	0.0	0.0	0.00	0.00	0.00
100.0	0.00	0.00	100.0	0.0	0.0	0.0	0.00	0.00	0.00
200.0	0.00	0.00	200.0	0.0	0.0	0.0	0.00	0.00	0.00
300.0	0.00	0.00	300.0	0.0	0.0	0.0	0.00	0.00	0.00
400.0	0.00	0.00	400.0	0.0	0.0	0.0	0.00	0.00	0.00
500.0	0.00	0.00	500.0	0.0	0.0	0.0	0.00	0.00	0.00
600.0	0.00	0.00	600.0	0.0	0.0	0.0	0.00	0.00	0.00
700.0	0.00	0.00	700.0	0.0	0.0	0.0	0.00	0.00	0.00
800.0	0.00	0.00	800.0	0.0	0.0	0.0	0.00	0.00	0.00
900.0	0.00	0.00	900.0	0.0	0.0	0.0	0.00	0.00	0.00
1,000.0	0.00	0.00	1,000.0	0.0	0.0	0.0	0.00	0.00	0.00
1,100.0	0.00	0.00	1,100.0	0.0	0.0	0.0	0.00	0.00	0.00
1,200.0	0.00	0.00	1,200.0	0.0	0.0	0.0	0.00	0.00	0.00
Start Build 3.50									
1,300.0	3.50	270.78	1,299.9	0.0	-3.1	3.1	3.50	3.50	0.00
1,400.0	7.00	270.78	1,399.5	0.2	-12.2	12.2	3.50	3.50	0.00
1,500.0	10.50	270.78	1,498.3	0.4	-27.4	27.4	3.50	3.50	0.00
1,600.0	14.00	270.78	1,596.0	0.7	-48.6	48.6	3.50	3.50	0.00
1,627.6	14.97	270.78	1,622.8	0.8	-55.5	55.5	3.50	3.50	0.00
Start 2690.7 hold at 1627.6 MD									
1,700.0	14.97	270.78	1,692.7	1.0	-74.2	74.2	0.00	0.00	0.00
1,800.0	14.97	270.78	1,789.3	1.4	-100.0	100.1	0.00	0.00	0.00
1,900.0	14.97	270.78	1,885.9	1.7	-125.9	125.9	0.00	0.00	0.00
2,000.0	14.97	270.78	1,982.5	2.1	-151.7	151.7	0.00	0.00	0.00
2,100.0	14.97	270.78	2,079.1	2.4	-177.5	177.5	0.00	0.00	0.00
2,200.0	14.97	270.78	2,175.7	2.8	-203.3	203.4	0.00	0.00	0.00
2,300.0	14.97	270.78	2,272.3	3.1	-229.2	229.2	0.00	0.00	0.00
2,400.0	14.97	270.78	2,368.9	3.5	-255.0	255.0	0.00	0.00	0.00
2,500.0	14.97	270.78	2,465.6	3.8	-280.8	280.8	0.00	0.00	0.00
2,600.0	14.97	270.78	2,562.2	4.2	-306.6	306.7	0.00	0.00	0.00
2,700.0	14.97	270.78	2,658.8	4.5	-332.5	332.5	0.00	0.00	0.00
2,800.0	14.97	270.78	2,755.4	4.9	-358.3	358.3	0.00	0.00	0.00
2,900.0	14.97	270.78	2,852.0	5.2	-384.1	384.1	0.00	0.00	0.00
3,000.0	14.97	270.78	2,948.6	5.6	-409.9	410.0	0.00	0.00	0.00
3,100.0	14.97	270.78	3,045.2	5.9	-435.8	435.8	0.00	0.00	0.00
3,200.0	14.97	270.78	3,141.8	6.3	-461.6	461.6	0.00	0.00	0.00
3,300.0	14.97	270.78	3,238.4	6.6	-487.4	487.5	0.00	0.00	0.00
3,382.4	14.97	270.78	3,318.0	6.9	-508.7	508.7	0.00	0.00	0.00
WF									
3,400.0	14.97	270.78	3,335.0	7.0	-513.2	513.3	0.00	0.00	0.00
3,500.0	14.97	270.78	3,431.6	7.4	-539.1	539.1	0.00	0.00	0.00
3,600.0	14.97	270.78	3,528.2	7.7	-564.9	564.9	0.00	0.00	0.00
3,700.0	14.97	270.78	3,624.8	8.1	-590.7	590.8	0.00	0.00	0.00
3,800.0	14.97	270.78	3,721.5	8.4	-616.5	616.6	0.00	0.00	0.00
3,900.0	14.97	270.78	3,818.1	8.8	-642.4	642.4	0.00	0.00	0.00
4,000.0	14.97	270.78	3,914.7	9.1	-668.2	668.2	0.00	0.00	0.00
4,100.0	14.97	270.78	4,011.3	9.5	-694.0	694.1	0.00	0.00	0.00
4,200.0	14.97	270.78	4,107.9	9.8	-719.8	719.9	0.00	0.00	0.00
4,300.0	14.97	270.78	4,204.5	10.2	-745.6	745.7	0.00	0.00	0.00
4,318.3	14.97	270.78	4,222.2	10.2	-750.4	750.5	0.00	0.00	0.00
Start Drop -3.50									
4,400.0	12.11	270.78	4,301.6	10.5	-769.5	769.6	3.50	-3.50	0.00
4,500.0	8.61	270.78	4,399.9	10.7	-787.5	787.5	3.50	-3.50	0.00
4,600.0	5.11	270.78	4,499.2	10.9	-799.4	799.5	3.50	-3.50	0.00

Database:	EDM 2003.21 Single User Db	Local Co-ordinate Reference:	Well McLin C6
Company:	Ursa Operating Company, LLC	TVD Reference:	McLin C6 @ 5741.4ft (Original Well Elev)
Project:	Rockies Region	MD Reference:	McLin C6 @ 5741.4ft (Original Well Elev)
Site:	McLin C	North Reference:	True
Well:	McLin C6	Survey Calculation Method:	Minimum Curvature
Wellbore:	Wellbore #1		
Design:	Design #1		

Planned Survey									
Measured Depth (ft)	Inclination (°)	Azimuth (°)	Vertical Depth (ft)	+N/-S (ft)	+E/-W (ft)	Vertical Section (ft)	Dogleg Rate (°/100ft)	Build Rate (°/100ft)	Turn Rate (°/100ft)
4,700.0	1.61	270.78	4,599.0	11.0	-805.3	805.3	3.50	-3.50	0.00
4,746.0	0.00	0.00	4,645.0	11.0	-805.9	806.0	3.50	-3.50	0.00
Start 2597.0 hold at 4746.0 MD - Top of Gas									
4,800.0	0.00	0.00	4,699.0	11.0	-805.9	806.0	0.00	0.00	0.00
4,900.0	0.00	0.00	4,799.0	11.0	-805.9	806.0	0.00	0.00	0.00
5,000.0	0.00	0.00	4,899.0	11.0	-805.9	806.0	0.00	0.00	0.00
5,100.0	0.00	0.00	4,999.0	11.0	-805.9	806.0	0.00	0.00	0.00
5,200.0	0.00	0.00	5,099.0	11.0	-805.9	806.0	0.00	0.00	0.00
5,300.0	0.00	0.00	5,199.0	11.0	-805.9	806.0	0.00	0.00	0.00
5,400.0	0.00	0.00	5,299.0	11.0	-805.9	806.0	0.00	0.00	0.00
5,500.0	0.00	0.00	5,399.0	11.0	-805.9	806.0	0.00	0.00	0.00
5,600.0	0.00	0.00	5,499.0	11.0	-805.9	806.0	0.00	0.00	0.00
5,700.0	0.00	0.00	5,599.0	11.0	-805.9	806.0	0.00	0.00	0.00
5,800.0	0.00	0.00	5,699.0	11.0	-805.9	806.0	0.00	0.00	0.00
5,866.0	0.00	0.00	5,765.0	11.0	-805.9	806.0	0.00	0.00	0.00
Cameo									
5,900.0	0.00	0.00	5,799.0	11.0	-805.9	806.0	0.00	0.00	0.00
6,000.0	0.00	0.00	5,899.0	11.0	-805.9	806.0	0.00	0.00	0.00
6,100.0	0.00	0.00	5,999.0	11.0	-805.9	806.0	0.00	0.00	0.00
6,200.0	0.00	0.00	6,099.0	11.0	-805.9	806.0	0.00	0.00	0.00
6,300.0	0.00	0.00	6,199.0	11.0	-805.9	806.0	0.00	0.00	0.00
6,400.0	0.00	0.00	6,299.0	11.0	-805.9	806.0	0.00	0.00	0.00
6,500.0	0.00	0.00	6,399.0	11.0	-805.9	806.0	0.00	0.00	0.00
6,600.0	0.00	0.00	6,499.0	11.0	-805.9	806.0	0.00	0.00	0.00
6,700.0	0.00	0.00	6,599.0	11.0	-805.9	806.0	0.00	0.00	0.00
6,800.0	0.00	0.00	6,699.0	11.0	-805.9	806.0	0.00	0.00	0.00
6,900.0	0.00	0.00	6,799.0	11.0	-805.9	806.0	0.00	0.00	0.00
7,000.0	0.00	0.00	6,899.0	11.0	-805.9	806.0	0.00	0.00	0.00
7,043.0	0.00	0.00	6,942.0	11.0	-805.9	806.0	0.00	0.00	0.00
Rollins									
7,100.0	0.00	0.00	6,999.0	11.0	-805.9	806.0	0.00	0.00	0.00
7,200.0	0.00	0.00	7,099.0	11.0	-805.9	806.0	0.00	0.00	0.00
7,300.0	0.00	0.00	7,199.0	11.0	-805.9	806.0	0.00	0.00	0.00
7,343.0	0.00	0.00	7,242.0	11.0	-805.9	806.0	0.00	0.00	0.00
TD at 7343.0									

Formations						
Measured Depth (ft)	Vertical Depth (ft)	Name	Lithology	Dip (°)	Dip Direction (°)	
3,382.4	3,318.0	WF		0.00		
4,746.0	4,645.0	Top of Gas		0.00		
5,866.0	5,765.0	Cameo		0.00		
7,043.0	6,942.0	Rollins		0.00		

Database:	EDM 2003.21 Single User Db	Local Co-ordinate Reference:	Well McLin C6
Company:	Ursa Operating Company, LLC	TVD Reference:	McLin C6 @ 5741.4ft (Original Well Elev)
Project:	Rockies Region	MD Reference:	McLin C6 @ 5741.4ft (Original Well Elev)
Site:	McLin C	North Reference:	True
Well:	McLin C6	Survey Calculation Method:	Minimum Curvature
Wellbore:	Wellbore #1		
Design:	Design #1		

Plan Annotations				
Measured Depth (ft)	Vertical Depth (ft)	Local Coordinates		Comment
		+N/-S (ft)	+E/-W (ft)	
1,200.0	1,200.0	0.0	0.0	Start Build 3.50
1,627.6	1,622.8	0.8	-55.5	Start 2690.7 hold at 1627.6 MD
4,318.3	4,222.2	10.2	-750.4	Start Drop -3.50
4,746.0	4,645.0	11.0	-805.9	Start 2597.0 hold at 4746.0 MD
7,343.0	7,242.0	11.0	-805.9	TD at 7343.0



Well Name: McLin C6
Surface Location: McLin C
North American Datum 1983 , US State Plane 1983, Colorado Central Zone
Ground Elevation: 5726.0
+N/-S +E/-W Northing Easting Latitude Longitude Slot
0.0 0.0 494715.25 733246.35 39° 31' 30.853 N 107° 36' 25.769 W
Original Well Elev McLin C6 @ 5741.4ft (Original Well Elev)



Azimuths to True North
Magnetic North: 9.88°
Magnetic Field
Strength: 52152.5snT
Dip Angle: 65.79°
Date: 6/24/2013
Model: IGRF200510

McLin C
McLin C6
Design #1
9:20, June 25 2013

WELLBORE TARGET DETAILS (MAP CO-ORDINATES AND LAT/LONG)

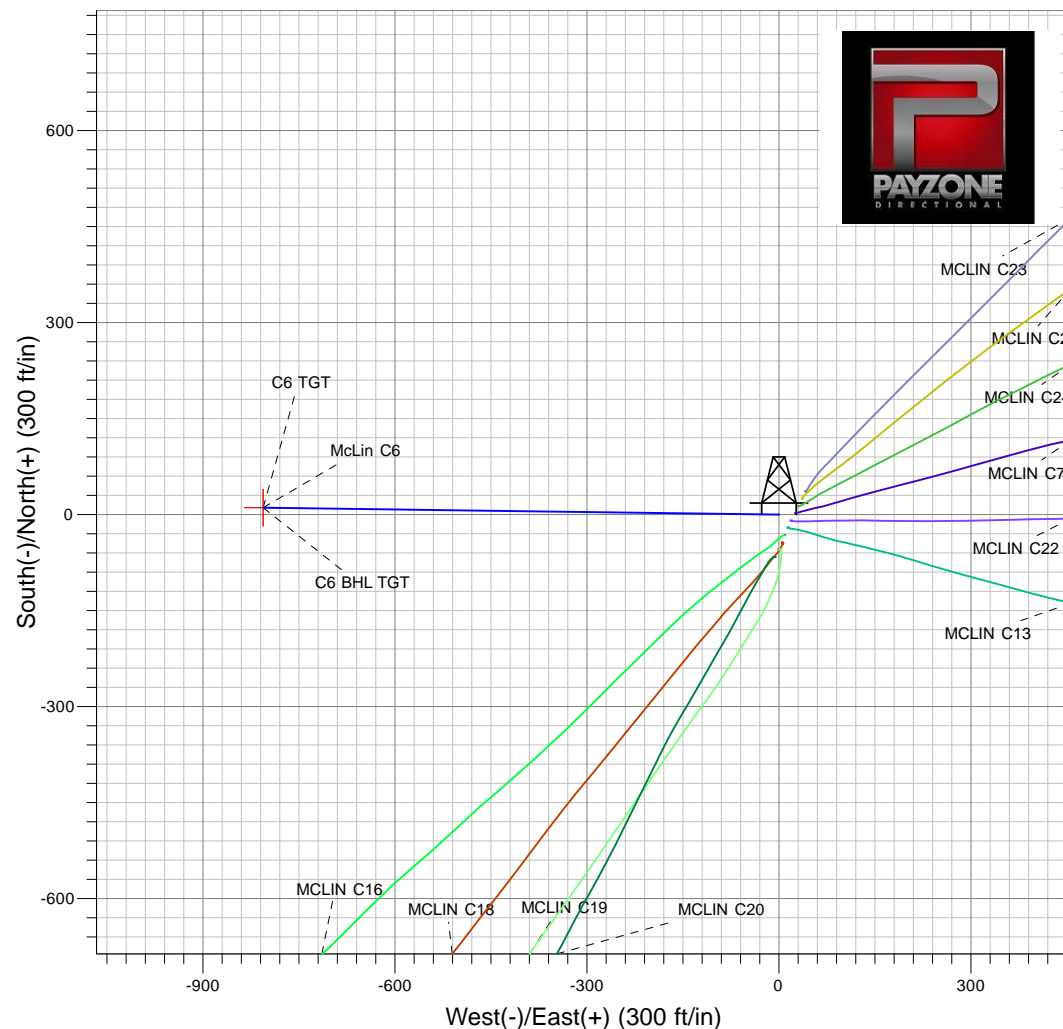
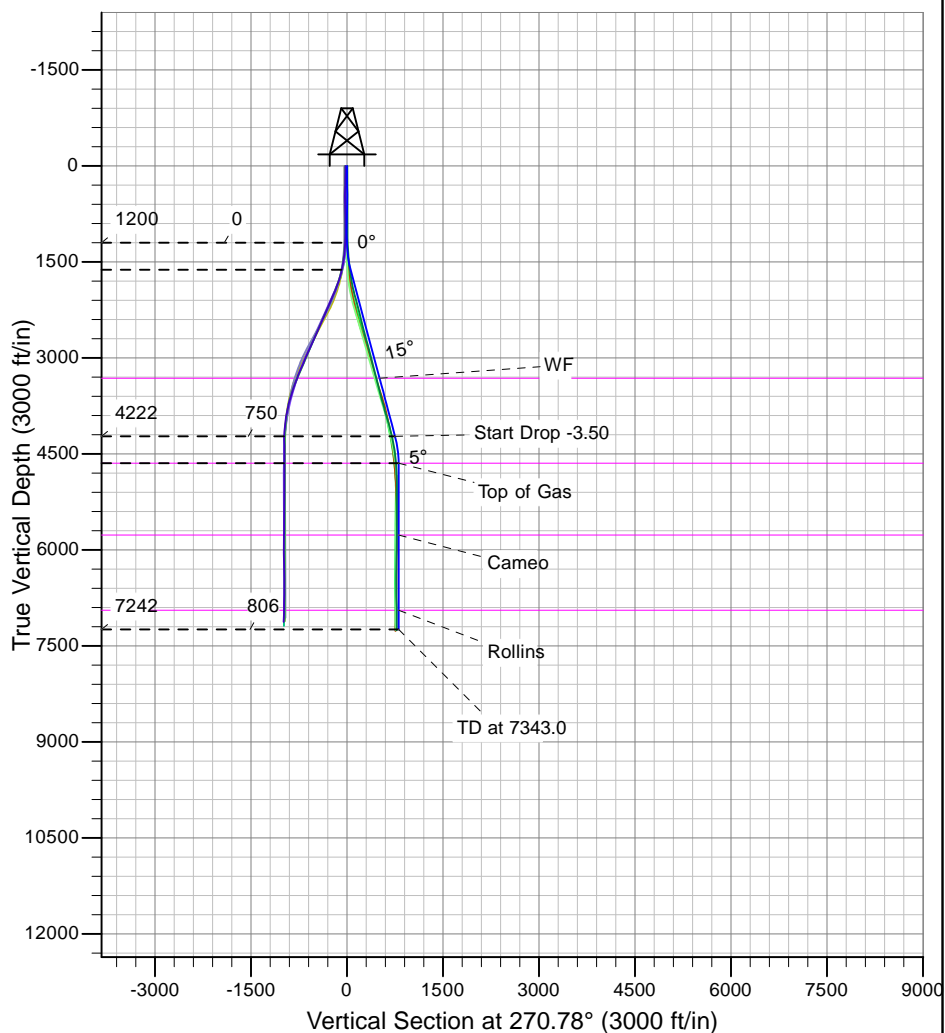
Name	TVD	+N/-S	+E/-W	Northing	Easting	Latitude	Longitude	Shape
C6 TGT	4645.0	11.0	-805.9	494724.30	733000.85	39° 31' 30.853 N	107° 36' 36.054 W	Point
C6 BHL TGT	7242.0	11.0	-805.9	494724.30	733000.85	39° 31' 30.853 N	107° 36' 36.054 W	Point

SECTION DETAILS

Sec	MD	Inc	Azi	TVD	+N/-S	+E/-W	DLeg	TFace	VSec	Target
1	0.0	0.00	0.00	0.0	0.0	0.0	0.00	0.00	0.0	
2	1200.0	0.00	0.00	1200.0	0.0	0.0	0.00	0.00	0.0	
3	1627.6	14.97	270.78	1622.8	0.8	-55.5	3.50	270.78	55.5	
4	4318.3	14.97	270.78	4222.2	10.2	-750.4	0.00	0.00	750.5	
5	4746.0	0.00	0.00	4645.0	11.0	-805.9	3.50	180.00	806.0	C6 TGT
6	7343.0	0.00	0.00	7242.0	11.0	-805.9	0.00	0.00	806.0	C6 BHL TGT

ANNOTATIONS

TVD	MD	Annotation
1200.0	1200.0	Start Build 3.50
1622.8	1627.6	Start 2690.7 hold at 1627.6 MD
4222.2	4318.3	Start Drop -3.50
4645.0	4746.0	Start 2597.0 hold at 4746.0 MD
7242.0	7343.0	TD at 7343.0





Ursa Operating Company, LLC

Rockies Region

McLin C

McLin C6

Wellbore #1

Design #1

Anticollision Report

25 June, 2013



Company:	Ursa Operating Company, LLC	Local Co-ordinate Reference:	Well McLin C6
Project:	Rockies Region	TVD Reference:	McLin C6 @ 5741.4ft (Original Well Elev)
Reference Site:	McLin C	MD Reference:	McLin C6 @ 5741.4ft (Original Well Elev)
Site Error:	0.0ft	North Reference:	True
Reference Well:	McLin C6	Survey Calculation Method:	Minimum Curvature
Well Error:	0.0ft	Output errors are at	2.00 sigma
Reference Wellbore	Wellbore #1	Database:	EDM 2003.21 Single User Db
Reference Design:	Design #1	Offset TVD Reference:	Offset Datum

Reference	Design #1		
Filter type:	NO GLOBAL FILTER: Using user defined selection & filtering criteria		
Interpolation Method:	Stations	Error Model:	ISCWSA
Depth Range:	Unlimited	Scan Method:	Closest Approach 3D
Results Limited by:	Maximum center-center distance of 10,000.0ft	Error Surface:	Elliptical Conic
Warning Levels Evaluated at:	2.00 Sigma		

Survey Tool Program		Date	6/25/2013		
From (ft)	To (ft)	Survey (Wellbore)	Tool Name	Description	
0.0	7,343.0	Design #1 (Wellbore #1)	MWD	MWD - Standard	

Summary						
Site Name	Reference Measured Depth (ft)	Offset Measured Depth (ft)	Distance Between Centres (ft)	Distance Between Ellipses (ft)	Separation Factor	Warning
Offset Well - Wellbore - Design						
McLin C						
MCLIN C13 - Wellbore #1 - Actual	1,110.4	1,110.5	23.5	21.2	9.944	CC, ES
MCLIN C13 - Wellbore #1 - Actual	1,200.0	1,199.1	25.4	22.8	9.874	SF
MCLIN C16 - Wellbore #1 - Actual	1,179.8	1,179.8	33.2	30.7	13.176	CC
MCLIN C16 - Wellbore #1 - Actual	1,200.0	1,200.0	33.2	30.7	12.948	ES
MCLIN C16 - Wellbore #1 - Actual	1,300.0	1,299.5	34.5	31.8	12.425	SF
MCLIN C18 - Wellbore #1 - Actual	100.0	100.0	43.7	43.6	458.657	CC
MCLIN C18 - Wellbore #1 - Actual	1,031.6	1,031.6	44.2	42.0	20.191	ES
MCLIN C18 - Wellbore #1 - Actual	1,200.0	1,198.1	47.0	44.4	18.290	SF
MCLIN C19 - Wellbore #1 - Actual	466.2	466.2	54.0	53.1	58.790	CC
MCLIN C19 - Wellbore #1 - Actual	1,104.5	1,104.5	54.9	52.5	23.327	ES
MCLIN C19 - Wellbore #1 - Actual	1,200.0	1,198.3	56.2	53.6	21.892	SF
MCLIN C2 - Wellbore #1 - Actual	0.0	0.0	43.9			
MCLIN C2 - Wellbore #1 - Actual	233.3	233.3	44.3	43.9	112.184	ES
MCLIN C2 - Wellbore #1 - Actual	1,200.0	1,198.9	48.1	45.5	18.738	SF
MCLIN C20 - Wellbore #1 - Actual	0.0	0.0	66.4			
MCLIN C20 - Wellbore #1 - Actual	1,100.0	1,099.8	66.6	64.3	28.438	ES
MCLIN C20 - Wellbore #1 - Actual	1,200.0	1,197.4	68.4	65.8	26.620	SF
MCLIN C22 - Wellbore #1 - Actual	1,093.3	1,093.3	19.9	17.5	8.536	CC
MCLIN C22 - Wellbore #1 - Actual	1,100.0	1,100.0	19.9	17.5	8.484	ES
MCLIN C22 - Wellbore #1 - Actual	1,200.0	1,199.4	21.4	18.8	8.315	SF
MCLIN C23 - Wellbore #1 - Actual	0.0	0.0	54.8			
MCLIN C23 - Wellbore #1 - Actual	604.0	604.2	55.4	54.2	45.146	ES
MCLIN C23 - Wellbore #1 - Actual	1,200.0	1,197.8	58.9	56.3	22.924	SF
MCLIN C24 - Wellbore #1 - Actual	1,050.4	1,050.4	33.1	30.8	14.822	CC
MCLIN C24 - Wellbore #1 - Actual	1,100.0	1,099.8	33.2	30.8	14.150	ES
MCLIN C24 - Wellbore #1 - Actual	1,200.0	1,198.5	35.5	32.9	13.812	SF
MCLIN C7 - Wellbore #1 - Actual	0.0	0.0	25.6			
MCLIN C7 - Wellbore #1 - Actual	1,200.0	1,199.3	29.8	27.2	11.602	SF

Offset Design												McLin C - MCLIN C13 - Wellbore #1 - Actual		Offset Site Error:		0.0 ft	
Survey Program: 100-														Offset Well Error:		0.0 ft	
Reference		Offset		Semi Major Axis			Distance										
Measured Depth	Vertical Depth	Measured Depth	Vertical Depth	Reference	Offset	Highside Toolface	Offset Wellbore Centre		Between Centres	Between Ellipses	Minimum Separation	Separation Factor	Warning				
(ft)	(ft)	(ft)	(ft)	(ft)	(ft)	(°)	+N/-S	+E/-W	(ft)	(ft)	(ft)						

CC - Min centre to center distance or convergent point, SF - min separation factor, ES - min ellipse separation

Company:	Ursa Operating Company, LLC	Local Co-ordinate Reference:	Well McLin C6
Project:	Rockies Region	TVD Reference:	McLin C6 @ 5741.4ft (Original Well Elev)
Reference Site:	McLin C	MD Reference:	McLin C6 @ 5741.4ft (Original Well Elev)
Site Error:	0.0ft	North Reference:	True
Reference Well:	McLin C6	Survey Calculation Method:	Minimum Curvature
Well Error:	0.0ft	Output errors are at	2.00 sigma
Reference Wellbore	Wellbore #1	Database:	EDM 2003.21 Single User Db
Reference Design:	Design #1	Offset TVD Reference:	Offset Datum

Offset Design													Offset Site Error:	0.0 ft
Survey Program: 100-													Offset Well Error:	0.0 ft
Reference														
Offset														
Semi Major Axis														
Distance														
Measured Depth (ft)	Vertical Depth (ft)	Measured Depth (ft)	Vertical Depth (ft)	Reference (ft)	Offset (ft)	Highside Toolface (°)	Offset Wellbore Centre +N/-S (ft)	+E/-W (ft)	Between Centres (ft)	Between Ellipses (ft)	Minimum Separation (ft)	Separation Factor	Warning	
0.0	0.0	0.0	0.0	0.0	0.0	143.55	-20.7	15.3	25.8					
100.0	100.0	100.0	100.0	0.1	0.0	143.96	-20.8	15.2	25.8	25.7	0.10	270.484		
200.0	200.0	199.9	199.9	0.3	0.0	143.86	-21.0	15.3	26.0	25.7	0.32	81.249		
300.0	300.0	300.1	300.1	0.5	0.0	142.95	-20.7	15.6	26.0	25.4	0.54	47.675		
400.0	400.0	400.0	400.0	0.8	0.0	143.10	-20.5	15.4	25.7	24.9	0.77	33.356		
403.6	403.6	403.6	403.6	0.8	0.0	143.14	-20.5	15.4	25.7	24.9	0.78	33.008		
500.0	500.0	499.9	499.9	1.0	0.0	143.08	-20.7	15.5	25.9	24.9	0.99	26.023		
600.0	600.0	600.2	600.2	1.2	0.0	142.11	-20.4	15.8	25.8	24.6	1.22	21.164		
694.0	694.0	694.0	694.0	1.4	0.0	142.11	-20.1	15.7	25.5	24.1	1.43	17.825		
700.0	700.0	700.0	700.0	1.4	0.0	142.16	-20.1	15.6	25.5	24.1	1.44	17.660		
800.0	800.0	799.9	799.9	1.7	0.0	142.51	-20.4	15.7	25.8	24.1	1.67	15.444		
900.0	900.0	900.1	900.1	1.9	0.0	141.95	-20.4	15.9	25.9	24.0	1.89	13.667		
1,000.0	1,000.0	1,000.4	1,000.4	2.1	0.0	143.55	-20.0	14.8	24.9	22.7	2.12	11.734		
1,100.0	1,100.0	1,100.1	1,100.1	2.3	0.0	146.72	-19.7	12.9	23.6	21.2	2.34	10.054		
1,110.4	1,110.4	1,110.5	1,110.4	2.4	0.0	146.79	-19.7	12.9	23.5	21.2	2.37	9.944 CC, ES		
1,200.0	1,200.0	1,199.1	1,199.0	2.6	0.0	144.53	-20.6	14.7	25.4	22.8	2.57	9.874 SF		
1,300.0	1,299.9	1,297.6	1,297.2	2.8	0.0	-138.11	-22.3	21.4	33.2	30.4	2.78	11.955		
1,400.0	1,399.5	1,394.1	1,393.2	3.0	0.0	-151.53	-24.1	32.2	51.0	48.0	2.97	17.151		
1,500.0	1,498.3	1,487.5	1,485.5	3.2	0.0	-159.04	-27.4	45.6	79.2	76.0	3.16	25.059		
1,600.0	1,596.0	1,575.9	1,572.4	3.5	0.0	-162.72	-32.2	60.8	116.7	113.4	3.35	34.856		
1,627.6	1,622.8	1,599.2	1,595.3	3.6	0.0	-163.42	-33.7	65.5	128.8	125.4	3.40	37.871		
1,700.0	1,692.7	1,659.0	1,653.5	3.9	0.0	-165.14	-37.7	78.5	162.4	158.8	3.57	45.506		
1,800.0	1,789.3	1,739.0	1,730.7	4.3	0.0	-166.85	-42.8	98.6	211.7	207.9	3.81	55.620		
1,900.0	1,885.9	1,814.0	1,802.4	4.7	0.0	-167.99	-47.7	120.1	264.4	260.4	4.05	65.232		
2,000.0	1,982.5	1,885.1	1,869.5	5.2	0.0	-168.72	-53.1	143.2	320.6	316.3	4.31	74.419		
2,100.0	2,079.1	1,952.3	1,931.8	5.7	0.0	-169.14	-59.1	167.4	380.1	375.5	4.57	83.209		
2,200.0	2,175.7	2,019.8	1,993.7	6.1	0.0	-169.33	-66.2	193.5	442.0	437.2	4.83	91.443		
2,300.0	2,272.3	2,086.3	2,053.8	6.6	0.0	-169.35	-74.3	220.7	506.1	501.0	5.11	99.120		
2,400.0	2,368.9	2,161.4	2,121.4	7.2	0.0	-169.35	-83.7	252.0	570.9	565.6	5.38	106.091		
2,500.0	2,465.6	2,235.9	2,188.5	7.7	0.0	-169.42	-92.5	283.3	635.9	630.2	5.66	112.356		
2,600.0	2,562.2	2,309.4	2,254.4	8.2	0.0	-169.48	-101.2	314.4	701.1	695.1	5.94	118.034		
2,700.0	2,658.8	2,391.3	2,328.1	8.7	0.0	-169.56	-110.6	349.1	766.3	760.0	6.22	123.163		
2,800.0	2,755.4	2,487.3	2,415.2	9.2	0.0	-169.65	-121.1	387.9	829.7	823.2	6.50	127.561		
2,900.0	2,852.0	2,564.5	2,485.6	9.8	0.0	-169.75	-129.1	418.6	892.6	885.8	6.79	131.475		
3,000.0	2,948.6	2,635.6	2,550.3	10.3	0.0	-169.87	-136.0	447.3	955.8	948.7	7.07	135.115		
3,100.0	3,045.2	2,723.9	2,630.8	10.8	0.0	-170.03	-144.0	482.7	1,018.7	1,011.4	7.36	138.447		
3,200.0	3,141.8	2,799.3	2,699.6	11.4	0.0	-170.16	-150.8	512.6	1,081.4	1,073.7	7.64	141.459		
3,300.0	3,238.4	2,876.2	2,769.7	11.9	0.0	-170.26	-157.9	543.5	1,144.3	1,136.4	7.93	144.270		
3,400.0	3,335.0	2,952.4	2,839.3	12.4	0.0	-170.36	-164.9	574.0	1,207.2	1,199.0	8.22	146.866		
3,500.0	3,431.6	3,029.9	2,909.9	13.0	0.0	-170.49	-171.3	605.2	1,270.2	1,261.7	8.51	149.315		
3,600.0	3,528.2	3,110.0	2,982.9	13.5	0.0	-170.58	-178.4	637.3	1,333.1	1,324.3	8.80	151.560		
3,700.0	3,624.8	3,187.3	3,053.4	14.1	0.0	-170.65	-185.5	668.2	1,396.0	1,386.9	9.09	153.634		
3,800.0	3,721.5	3,253.9	3,114.1	14.6	0.0	-170.73	-191.2	695.1	1,459.1	1,449.7	9.38	155.614		
3,900.0	3,818.1	3,350.3	3,201.8	15.2	0.0	-170.80	-200.0	734.1	1,522.5	1,512.8	9.67	157.493		
4,000.0	3,914.7	3,543.7	3,381.6	15.7	0.0	-170.84	-218.4	802.6	1,580.8	1,570.9	9.96	158.723		
4,100.0	4,011.3	3,730.6	3,559.1	16.3	0.0	-170.94	-232.8	859.2	1,635.8	1,625.5	10.25	159.601		
4,200.0	4,107.9	3,911.0	3,733.6	16.8	0.0	-171.10	-243.4	903.8	1,685.4	1,674.8	10.54	159.958		
4,300.0	4,204.5	4,092.2	3,911.2	17.3	0.0	-171.34	-249.5	938.8	1,729.4	1,718.6	10.82	159.863		
4,318.3	4,222.2	4,145.0	3,963.4	17.4	0.0	-171.44	-250.4	947.2	1,736.9	1,726.0	10.87	159.823		
4,400.0	4,301.6	4,365.7	4,182.6	17.8	0.0	-171.89	-252.9	971.8	1,765.1	1,754.1	11.08	159.366		
4,500.0	4,399.9	4,602.4	4,419.2	18.1	0.0	-172.18	-253.6	976.3	1,783.6	1,772.3	11.27	158.250		
4,600.0	4,499.2	4,696.1	4,512.9	18.4	0.0	-172.31	-252.7	975.6	1,794.6	1,783.2	11.42	157.192		

CC - Min centre to center distance or convergent point, SF - min separation factor, ES - min ellipse separation

Company:	Ursa Operating Company, LLC	Local Co-ordinate Reference:	Well McLin C6
Project:	Rockies Region	TVD Reference:	McLin C6 @ 5741.4ft (Original Well Elev)
Reference Site:	McLin C	MD Reference:	McLin C6 @ 5741.4ft (Original Well Elev)
Site Error:	0.0ft	North Reference:	True
Reference Well:	McLin C6	Survey Calculation Method:	Minimum Curvature
Well Error:	0.0ft	Output errors are at	2.00 sigma
Reference Wellbore	Wellbore #1	Database:	EDM 2003.21 Single User Db
Reference Design:	Design #1	Offset TVD Reference:	Offset Datum

Offset Design													Offset Site Error:	0.0 ft
Survey Program: 100-													Offset Well Error:	0.0 ft
Reference														
Offset														
Semi Major Axis														
Distance														
Measured Depth (ft)	Vertical Depth (ft)	Measured Depth (ft)	Vertical Depth (ft)	Reference (ft)	Offset (ft)	Highside Toolface (°)	Offset Wellbore Centre +N/-S (ft)	+E/-W (ft)	Between Centres (ft)	Between Ellipses (ft)	Minimum Separation (ft)	Separation Factor	Warning	
4,700.0	4,599.0	4,785.9	4,602.6	18.5	0.0	-172.38	-251.8	975.3	1,799.9	1,788.4	11.51	156.430		
4,746.0	4,645.0	4,829.0	4,645.8	18.6	0.0	98.38	-251.3	975.4	1,800.5	1,788.9	11.53	156.151		
4,754.7	4,653.8	4,837.0	4,653.8	18.6	0.0	98.37	-251.2	975.4	1,800.5	1,788.9	11.55	155.950		
4,800.0	4,699.0	4,874.7	4,691.4	18.6	0.0	98.36	-250.7	975.5	1,800.6	1,788.9	11.62	154.928		
4,900.0	4,799.0	4,972.1	4,788.9	18.8	0.0	98.32	-249.7	976.3	1,801.2	1,789.4	11.80	152.648		
5,000.0	4,899.0	5,079.6	4,896.4	18.9	0.0	98.31	-249.3	976.9	1,801.7	1,789.8	11.98	150.403		
5,100.0	4,999.0	5,178.1	4,994.8	19.0	0.0	98.35	-250.8	976.9	1,801.9	1,789.7	12.16	148.138		
5,200.0	5,099.0	5,269.5	5,086.2	19.1	0.0	98.42	-252.8	977.0	1,802.3	1,790.0	12.35	145.937		
5,300.0	5,199.0	5,384.4	5,201.0	19.3	0.0	98.48	-254.9	977.4	1,803.0	1,790.5	12.54	143.808		
5,400.0	5,299.0	5,520.4	5,337.1	19.4	0.0	98.47	-254.2	975.5	1,801.4	1,788.7	12.72	141.583		
5,500.0	5,399.0	5,617.7	5,434.4	19.5	0.0	98.44	-253.2	973.7	1,799.4	1,786.5	12.91	139.386		
5,600.0	5,499.0	5,712.4	5,529.0	19.7	0.0	98.42	-252.3	972.0	1,797.6	1,784.5	13.10	137.248		
5,700.0	5,599.0	5,793.1	5,609.7	19.8	0.0	98.40	-251.4	971.1	1,796.3	1,783.0	13.29	135.203		
5,739.9	5,639.0	5,822.4	5,639.0	19.8	0.0	98.40	-251.3	971.0	1,796.2	1,782.8	13.36	134.426		
5,800.0	5,699.0	5,868.0	5,684.6	19.9	0.0	98.39	-251.1	971.3	1,796.4	1,783.0	13.48	133.304		
5,900.0	5,799.0	5,968.9	5,785.5	20.1	0.0	98.38	-251.0	971.9	1,797.1	1,783.4	13.67	131.483		
6,000.0	5,899.0	6,062.9	5,879.5	20.2	0.0	98.39	-251.3	972.9	1,798.2	1,784.3	13.86	129.729		
6,100.0	5,999.0	6,166.4	5,983.0	20.3	0.0	98.41	-252.0	974.0	1,799.3	1,785.3	14.06	128.016		
6,200.0	6,099.0	6,275.4	6,092.0	20.5	0.0	98.45	-253.5	974.3	1,799.8	1,785.6	14.25	126.286		
6,300.0	6,199.0	6,365.0	6,181.6	20.6	0.0	98.48	-254.5	974.8	1,800.5	1,786.0	14.45	124.614		
6,400.0	6,299.0	6,483.5	6,300.1	20.8	0.0	98.50	-255.3	975.5	1,801.3	1,786.6	14.65	122.990		
6,500.0	6,399.0	6,599.7	6,416.3	20.9	0.0	98.54	-256.4	974.5	1,800.5	1,785.6	14.84	121.291		
6,600.0	6,499.0	6,688.2	6,504.8	21.1	0.0	98.54	-256.3	973.9	1,799.8	1,784.7	15.04	119.649		
6,648.9	6,547.9	6,731.3	6,547.9	21.1	0.0	98.53	-256.1	973.8	1,799.7	1,784.6	15.14	118.879		
6,700.0	6,599.0	6,775.8	6,592.4	21.2	0.0	98.52	-255.7	974.0	1,799.8	1,784.5	15.24	118.096		
6,800.0	6,699.0	6,866.3	6,682.9	21.4	0.0	98.50	-255.0	974.8	1,800.5	1,785.1	15.44	116.625		
6,900.0	6,799.0	6,966.6	6,783.1	21.5	0.0	98.45	-253.7	975.9	1,801.4	1,785.8	15.64	115.203		
7,000.0	6,899.0	7,067.6	6,884.2	21.7	0.0	98.42	-252.9	976.9	1,802.3	1,786.4	15.84	113.806		
7,100.0	6,999.0	7,157.9	6,974.4	21.8	0.0	98.40	-252.4	977.9	1,803.3	1,787.3	16.04	112.447		
7,200.0	7,099.0	7,250.4	7,066.9	22.0	0.0	98.37	-251.8	979.5	1,805.0	1,788.7	16.24	111.156		
7,300.0	7,199.0	7,338.9	7,155.4	22.1	0.0	98.34	-251.1	981.5	1,807.1	1,790.6	16.44	109.922		
7,343.0	7,242.0	7,371.0	7,187.5	22.2	0.0	98.33	-250.8	982.4	1,808.2	1,791.6	16.53	109.409		

Company:	Ursa Operating Company, LLC	Local Co-ordinate Reference:	Well McLin C6
Project:	Rockies Region	TVD Reference:	McLin C6 @ 5741.4ft (Original Well Elev)
Reference Site:	McLin C	MD Reference:	McLin C6 @ 5741.4ft (Original Well Elev)
Site Error:	0.0ft	North Reference:	True
Reference Well:	McLin C6	Survey Calculation Method:	Minimum Curvature
Well Error:	0.0ft	Output errors are at	2.00 sigma
Reference Wellbore	Wellbore #1	Database:	EDM 2003.21 Single User Db
Reference Design:	Design #1	Offset TVD Reference:	Offset Datum

Offset Design														Offset Site Error:	0.0 ft
Survey Program: 988-														Offset Well Error:	0.0 ft
Reference															
Offset															
Semi Major Axis															
Distance															
Measured Depth (ft)	Vertical Depth (ft)	Measured Depth (ft)	Vertical Depth (ft)	Reference (ft)	Offset (ft)	Highside Toolface (°)	Offset Wellbore Centre +N/-S (ft)	+E/-W (ft)	Between Centres (ft)	Between Ellipses (ft)	Minimum Separation (ft)	Separation Factor	Warning		
0.0	0.0	0.0	0.0	0.0	0.0	162.65	-32.0	10.0	33.5						
100.0	100.0	100.0	100.0	0.1	0.0	162.71	-32.0	10.0	33.5	33.5	0.10	352.753			
200.0	200.0	200.0	200.0	0.3	0.0	162.88	-32.1	9.9	33.5	33.2	0.32	104.841			
300.0	300.0	300.0	300.0	0.5	0.0	163.16	-32.1	9.7	33.5	33.0	0.54	61.548			
400.0	400.0	400.0	400.0	0.8	0.0	163.56	-32.1	9.5	33.5	32.7	0.77	43.545			
500.0	500.0	500.0	500.0	1.0	0.0	164.08	-32.2	9.2	33.5	32.5	0.99	33.679			
600.0	600.0	600.0	600.0	1.2	0.0	164.71	-32.3	8.8	33.5	32.2	1.22	27.451			
700.0	700.0	700.0	700.0	1.4	0.0	165.46	-32.4	8.4	33.4	32.0	1.44	23.164			
800.0	800.0	800.0	800.0	1.7	0.0	166.32	-32.5	7.9	33.4	31.8	1.67	20.034			
900.0	900.0	900.0	900.0	1.9	0.0	167.30	-32.6	7.3	33.4	31.5	1.89	17.651			
918.3	918.3	918.4	918.3	1.9	0.0	167.49	-32.6	7.2	33.4	31.5	1.93	17.274			
1,000.0	1,000.0	1,000.0	1,000.0	2.1	0.0	168.38	-32.7	6.7	33.4	31.3	2.12	15.778			
1,100.0	1,100.0	1,100.1	1,100.0	2.3	0.0	168.87	-32.7	6.4	33.3	31.0	2.34	14.234			
1,179.8	1,179.8	1,179.8	1,179.8	2.5	0.0	168.72	-32.6	6.5	33.2	30.7	2.52	13.176 CC			
1,200.0	1,200.0	1,200.0	1,200.0	2.6	0.0	168.91	-32.6	6.4	33.2	30.7	2.57	12.948 ES			
1,300.0	1,299.9	1,299.5	1,299.5	2.8	0.0	-103.46	-33.7	4.6	34.5	31.8	2.78	12.425 SF			
1,400.0	1,399.5	1,398.5	1,398.3	3.0	0.0	-108.98	-37.1	0.3	39.3	36.3	2.99	13.135			
1,500.0	1,498.3	1,497.7	1,497.1	3.2	0.0	-116.54	-43.0	-5.9	48.4	45.2	3.22	15.046			
1,600.0	1,596.0	1,596.8	1,595.6	3.5	0.0	-123.87	-49.9	-14.5	61.0	57.5	3.47	17.568			
1,627.6	1,622.8	1,624.1	1,622.7	3.6	0.0	-125.65	-52.0	-17.4	65.1	61.6	3.55	18.367			
1,700.0	1,692.7	1,696.2	1,694.0	3.9	0.0	-128.86	-58.3	-26.4	76.2	72.4	3.76	20.242			
1,800.0	1,789.3	1,794.4	1,790.4	4.3	0.0	-129.65	-68.8	-41.8	91.2	87.1	4.10	22.257			
1,900.0	1,885.9	1,892.9	1,886.2	4.7	0.0	-128.06	-82.4	-59.6	107.1	102.6	4.48	23.890			
2,000.0	1,982.5	1,990.7	1,980.5	5.2	0.0	-125.08	-98.5	-80.1	123.5	118.5	4.92	25.113			
2,100.0	2,079.1	2,088.4	2,073.6	5.7	0.0	-121.21	-117.0	-103.4	140.7	135.3	5.40	26.073			
2,200.0	2,175.7	2,184.0	2,163.3	6.1	0.0	-116.82	-137.8	-128.9	159.6	153.7	5.91	26.980			
2,300.0	2,272.3	2,278.0	2,250.6	6.6	0.0	-112.71	-161.1	-154.9	181.5	175.1	6.45	28.133			
2,400.0	2,368.9	2,372.2	2,338.0	7.2	0.0	-109.56	-185.5	-180.2	205.5	198.6	6.99	29.402			
2,500.0	2,465.6	2,469.4	2,428.6	7.7	0.0	-107.27	-210.1	-205.3	229.9	222.3	7.53	30.541			
2,600.0	2,562.2	2,565.4	2,518.1	8.2	0.0	-105.41	-234.5	-230.3	254.5	246.4	8.06	31.558			
2,700.0	2,658.8	2,662.9	2,608.9	8.7	0.0	-103.85	-259.2	-255.7	279.2	270.6	8.60	32.456			
2,800.0	2,755.4	2,759.1	2,699.0	9.2	0.0	-102.85	-283.3	-279.3	304.1	295.0	9.14	33.282			
2,900.0	2,852.0	2,858.2	2,791.8	9.8	0.0	-101.99	-307.7	-303.8	328.6	318.9	9.67	33.970			
3,000.0	2,948.6	2,953.6	2,881.1	10.3	0.0	-101.20	-331.3	-327.7	353.3	343.1	10.21	34.596			
3,100.0	3,045.2	3,053.2	2,974.2	10.8	0.0	-100.34	-355.7	-353.6	377.6	366.8	10.76	35.101			
3,200.0	3,141.8	3,147.1	3,061.4	11.4	0.0	-99.47	-379.1	-379.0	402.2	390.9	11.30	35.584			
3,300.0	3,238.4	3,245.1	3,152.4	11.9	0.0	-98.57	-403.7	-406.1	427.1	415.2	11.85	36.037			
3,400.0	3,335.0	3,344.8	3,244.7	12.4	0.0	-97.68	-428.3	-434.4	451.5	439.1	12.40	36.405			
3,500.0	3,431.6	3,442.0	3,334.8	13.0	0.0	-96.88	-451.9	-462.2	475.6	462.6	12.95	36.720			
3,600.0	3,528.2	3,538.7	3,425.0	13.5	0.0	-96.38	-475.3	-488.1	499.9	486.4	13.50	37.034			
3,700.0	3,624.8	3,637.0	3,517.1	14.1	0.0	-96.04	-498.9	-513.4	524.0	509.9	14.04	37.309			
3,800.0	3,721.5	3,735.6	3,609.2	14.6	0.0	-95.65	-522.4	-539.5	548.0	533.4	14.59	37.554			
3,900.0	3,818.1	3,833.7	3,700.9	15.2	0.0	-95.28	-545.3	-565.7	571.5	556.4	15.14	37.750			
4,000.0	3,914.7	3,933.4	3,794.1	15.7	0.0	-94.94	-568.7	-592.2	595.1	579.4	15.69	37.936			
4,100.0	4,011.3	4,039.0	3,893.9	16.3	0.0	-94.91	-592.1	-617.4	617.7	601.5	16.23	38.052			
4,200.0	4,107.9	4,148.3	3,998.5	16.8	0.0	-95.21	-614.5	-640.3	638.8	622.0	16.78	38.078			
4,300.0	4,204.5	4,246.7	4,093.2	17.3	0.0	-95.64	-633.3	-659.0	658.7	641.4	17.31	38.043			
4,318.3	4,222.2	4,265.0	4,110.8	17.4	0.0	-95.72	-636.8	-662.4	662.4	645.0	17.41	38.038			
4,400.0	4,301.6	4,353.0	4,195.7	17.8	0.0	-96.48	-653.1	-678.9	678.1	660.3	17.77	38.163			
4,500.0	4,399.9	4,458.8	4,298.2	18.1	0.0	-96.93	-671.5	-697.7	695.6	677.5	18.07	38.489			
4,600.0	4,499.2	4,567.2	4,403.4	18.4	0.0	-96.78	-688.8	-717.0	711.0	692.7	18.31	38.827			
4,700.0	4,599.0	4,669.4	4,503.1	18.5	0.0	-96.27	-704.2	-733.8	725.1	706.7	18.49	39.228			

CC - Min centre to center distance or convergent point, SF - min separation factor, ES - min ellipse separation

Company:	Ursa Operating Company, LLC	Local Co-ordinate Reference:	Well McLin C6
Project:	Rockies Region	TVD Reference:	McLin C6 @ 5741.4ft (Original Well Elev)
Reference Site:	McLin C	MD Reference:	McLin C6 @ 5741.4ft (Original Well Elev)
Site Error:	0.0ft	North Reference:	True
Reference Well:	McLin C6	Survey Calculation Method:	Minimum Curvature
Well Error:	0.0ft	Output errors are at	2.00 sigma
Reference Wellbore	Wellbore #1	Database:	EDM 2003.21 Single User Db
Reference Design:	Design #1	Offset TVD Reference:	Offset Datum

Offset Design													Offset Site Error:	0.0 ft
McLin C - MCLIN C16 - Wellbore #1 - Actual													Offset Well Error:	0.0 ft
Survey Program: 988-														
Reference		Offset		Semi Major Axis			Distance							
Measured Depth (ft)	Vertical Depth (ft)	Measured Depth (ft)	Vertical Depth (ft)	Reference (ft)	Offset (ft)	Highside Toolface (°)	Offset Wellbore Centre +N/-S (ft)	+E/-W (ft)	Between Centres (ft)	Between Ellipses (ft)	Minimum Separation (ft)	Separation Factor	Warning	
4,746.0	4,645.0	4,718.9	4,551.6	18.6	0.0	174.83	-711.3	-740.6	731.2	712.6	18.54	39.432		
4,800.0	4,699.0	4,775.4	4,607.2	18.6	0.0	175.40	-718.9	-747.3	738.0	719.4	18.61	39.652		
4,900.0	4,799.0	4,886.1	4,716.5	18.8	0.0	176.26	-732.8	-757.3	749.9	731.2	18.74	40.008		
5,000.0	4,899.0	5,000.1	4,829.6	18.9	0.0	176.90	-744.7	-765.0	759.9	741.1	18.87	40.264		
5,100.0	4,999.0	5,133.4	4,962.4	19.0	0.0	177.40	-754.3	-771.2	767.0	748.0	19.00	40.362		
5,200.0	5,099.0	5,257.2	5,086.1	19.1	0.0	177.64	-758.3	-774.2	770.0	750.9	19.13	40.254		
5,300.0	5,199.0	5,364.8	5,193.7	19.3	0.0	177.64	-759.3	-774.2	771.0	751.7	19.26	40.036		
5,400.0	5,299.0	5,463.4	5,292.3	19.4	0.0	177.59	-760.0	-773.5	771.7	752.3	19.39	39.808		
5,500.0	5,399.0	5,564.4	5,393.3	19.5	0.0	177.50	-760.8	-772.2	772.6	753.0	19.52	39.587		
5,600.0	5,499.0	5,666.7	5,495.6	19.7	0.0	177.37	-761.3	-770.4	773.1	753.5	19.65	39.352		
5,700.0	5,599.0	5,763.1	5,591.9	19.8	0.0	177.20	-761.8	-768.2	773.8	754.0	19.78	39.120		
5,800.0	5,699.0	5,871.8	5,700.7	19.9	0.0	177.06	-762.2	-766.2	774.2	754.3	19.91	38.878		
5,900.0	5,799.0	5,981.5	5,810.4	20.1	0.0	177.06	-761.1	-766.3	773.1	753.1	20.05	38.558		
6,000.0	5,899.0	6,076.6	5,905.5	20.2	0.0	177.08	-760.0	-766.5	772.1	751.9	20.19	38.239		
6,100.0	5,999.0	6,176.2	6,005.1	20.3	0.0	177.07	-759.2	-766.5	771.2	750.9	20.33	37.934		
6,200.0	6,099.0	6,277.5	6,106.3	20.5	0.0	177.03	-758.4	-766.0	770.5	750.0	20.47	37.635		
6,300.0	6,199.0	6,381.7	6,210.5	20.6	0.0	177.04	-757.1	-766.3	769.2	748.5	20.62	37.308		
6,400.0	6,299.0	6,480.0	6,308.8	20.8	0.0	177.04	-755.6	-766.3	767.7	746.9	20.76	36.978		
6,500.0	6,399.0	6,581.3	6,410.1	20.9	0.0	176.93	-754.3	-764.9	766.5	745.6	20.91	36.664		
6,600.0	6,499.0	6,682.5	6,511.3	21.1	0.0	176.82	-752.6	-763.5	764.9	743.8	21.05	36.330		
6,700.0	6,599.0	6,788.6	6,617.3	21.2	0.0	176.85	-750.7	-764.0	763.0	741.8	21.20	35.988		
6,800.0	6,699.0	6,887.0	6,715.7	21.4	0.0	176.92	-748.3	-765.1	760.6	739.2	21.35	35.619		
6,900.0	6,799.0	6,985.1	6,813.7	21.5	0.0	176.96	-746.4	-765.7	758.6	737.1	21.51	35.273		
7,000.0	6,899.0	7,094.5	6,923.2	21.7	0.0	177.06	-743.7	-767.2	756.1	734.4	21.66	34.908		
7,100.0	6,999.0	7,197.2	7,025.8	21.8	0.0	177.14	-740.3	-768.3	752.7	730.9	21.81	34.505		
7,200.0	7,099.0	7,297.9	7,126.4	22.0	0.0	177.19	-736.7	-769.2	749.1	727.1	21.97	34.096		
7,300.0	7,199.0	7,398.0	7,226.5	22.1	0.0	177.19	-733.0	-769.4	745.4	723.3	22.13	33.688		
7,343.0	7,242.0	7,414.0	7,242.4	22.2	0.0	177.19	-732.5	-769.5	744.3	722.1	22.19	33.537		

Company:	Ursa Operating Company, LLC	Local Co-ordinate Reference:	Well McLin C6
Project:	Rockies Region	TVD Reference:	McLin C6 @ 5741.4ft (Original Well Elev)
Reference Site:	McLin C	MD Reference:	McLin C6 @ 5741.4ft (Original Well Elev)
Site Error:	0.0ft	North Reference:	True
Reference Well:	McLin C6	Survey Calculation Method:	Minimum Curvature
Well Error:	0.0ft	Output errors are at	2.00 sigma
Reference Wellbore	Wellbore #1	Database:	EDM 2003.21 Single User Db
Reference Design:	Design #1	Offset TVD Reference:	Offset Datum

Offset Design														Offset Site Error:	0.0 ft
Survey Program: 100-														Offset Well Error:	0.0 ft
Reference		Offset		Semi Major Axis		Distance									
Measured Depth (ft)	Vertical Depth (ft)	Measured Depth (ft)	Vertical Depth (ft)	Reference (ft)	Offset (ft)	Highside Toolface (°)	Offset Wellbore Centre +N/-S (ft)	+E/-W (ft)	Between Centres (ft)	Between Ellipses (ft)	Minimum Separation (ft)	Separation Factor	Warning		
0.0	0.0	0.0	0.0	0.0	0.0	173.56	-43.5	4.9	43.8						
100.0	100.0	100.0	100.0	0.1	0.0	172.91	-43.4	5.4	43.7	43.6	0.10	458.657 CC			
200.0	200.0	199.8	199.8	0.3	0.0	171.75	-43.4	6.3	43.8	43.5	0.32	136.991			
300.0	300.0	299.7	299.7	0.5	0.0	171.05	-43.9	6.9	44.4	43.9	0.54	81.501			
400.0	400.0	399.7	399.7	0.8	0.0	170.94	-44.5	7.1	45.1	44.3	0.77	58.614			
500.0	500.0	499.8	499.8	1.0	0.0	171.29	-45.2	6.9	45.7	44.7	0.99	45.995			
600.0	600.0	600.0	600.0	1.2	0.0	172.01	-45.6	6.4	46.0	44.8	1.22	37.755			
700.0	700.0	700.1	700.1	1.4	0.0	172.82	-45.6	5.7	45.9	44.5	1.44	31.810			
800.0	800.0	800.2	800.2	1.7	0.0	173.53	-45.3	5.1	45.6	43.9	1.67	27.312			
900.0	900.0	900.3	900.3	1.9	0.0	173.82	-44.7	4.8	45.0	43.1	1.89	23.770			
1,000.0	1,000.0	1,000.2	1,000.2	2.1	0.0	173.49	-44.0	5.0	44.3	42.1	2.12	20.899			
1,031.6	1,031.6	1,031.6	1,031.6	2.2	0.0	173.34	-43.9	5.1	44.2	42.0	2.19	20.191 ES			
1,100.0	1,100.0	1,099.6	1,099.6	2.3	0.0	173.01	-44.2	5.4	44.5	42.2	2.34	18.998			
1,200.0	1,200.0	1,198.1	1,198.0	2.6	0.0	173.39	-46.6	5.4	47.0	44.4	2.57	18.290 SF			
1,300.0	1,299.9	1,296.6	1,296.3	2.8	0.0	-96.73	-52.6	2.7	53.1	50.3	2.78	19.104			
1,400.0	1,399.5	1,395.3	1,394.5	3.0	0.0	-98.36	-60.9	-3.4	61.9	58.9	2.99	20.672			
1,500.0	1,498.3	1,493.1	1,491.3	3.2	0.0	-101.59	-71.1	-12.2	73.4	70.2	3.23	22.707			
1,600.0	1,596.0	1,591.4	1,588.4	3.5	0.0	-106.71	-83.3	-22.0	88.4	84.9	3.51	25.142			
1,627.6	1,622.8	1,618.7	1,615.4	3.6	0.0	-108.51	-86.5	-24.6	92.9	89.3	3.60	25.786			
1,700.0	1,692.7	1,688.7	1,684.5	3.9	0.0	-112.78	-95.2	-31.8	105.5	101.7	3.84	27.446			
1,800.0	1,789.3	1,786.3	1,780.4	4.3	0.0	-116.12	-109.0	-43.6	124.3	120.1	4.21	29.549			
1,900.0	1,885.9	1,883.3	1,875.0	4.7	0.0	-117.21	-124.4	-58.1	143.6	139.0	4.60	31.227			
2,000.0	1,982.5	1,979.2	1,967.8	5.2	0.0	-116.88	-142.0	-74.7	164.0	159.0	5.02	32.649			
2,100.0	2,079.1	2,072.9	2,057.8	5.7	0.0	-115.92	-161.6	-92.1	186.1	180.7	5.48	33.989			
2,200.0	2,175.7	2,167.5	2,147.7	6.1	0.0	-114.46	-183.9	-111.1	210.1	204.2	5.95	35.292			
2,300.0	2,272.3	2,259.5	2,234.0	6.6	0.0	-112.57	-207.9	-131.6	235.7	229.2	6.45	36.508			
2,400.0	2,368.9	2,349.8	2,317.7	7.2	0.0	-110.48	-234.2	-153.2	263.6	256.6	6.97	37.789			
2,500.0	2,465.6	2,438.7	2,399.1	7.7	0.0	-108.38	-262.3	-175.6	293.8	286.3	7.51	39.141			
2,600.0	2,562.2	2,529.2	2,480.6	8.2	0.0	-106.18	-293.1	-200.1	326.1	318.1	8.05	40.513			
2,700.0	2,658.8	2,623.4	2,564.7	8.7	0.0	-104.02	-325.8	-226.8	359.3	350.7	8.60	41.787			
2,800.0	2,755.4	2,719.1	2,650.4	9.2	0.0	-102.23	-358.6	-254.0	392.4	383.3	9.15	42.905			
2,900.0	2,852.0	2,809.7	2,731.7	9.8	0.0	-100.85	-389.5	-279.3	425.8	416.1	9.69	43.931			
3,000.0	2,948.6	2,902.0	2,813.9	10.3	0.0	-99.49	-422.0	-306.0	460.2	449.9	10.24	44.939			
3,100.0	3,045.2	2,995.5	2,897.5	10.8	0.0	-98.40	-454.6	-332.4	494.6	483.8	10.79	45.858			
3,200.0	3,141.8	3,087.3	2,979.9	11.4	0.0	-97.63	-486.7	-356.9	529.4	518.0	11.33	46.724			
3,300.0	3,238.4	3,178.1	3,061.1	11.9	0.0	-96.89	-518.9	-381.7	564.6	552.7	11.87	47.546			
3,400.0	3,335.0	3,273.0	3,146.3	12.4	0.0	-96.31	-552.6	-406.5	600.2	587.7	12.42	48.324			
3,500.0	3,431.6	3,370.5	3,233.6	13.0	0.0	-95.68	-586.8	-433.2	635.1	622.2	12.97	48.985			
3,600.0	3,528.2	3,456.2	3,310.4	13.5	0.0	-95.18	-616.8	-456.7	670.2	656.6	13.51	49.598			
3,700.0	3,624.8	3,540.1	3,384.7	14.1	0.0	-94.66	-647.6	-480.3	707.0	692.9	14.06	50.285			
3,800.0	3,721.5	3,631.7	3,465.5	14.6	0.0	-94.07	-681.7	-506.8	744.1	729.5	14.61	50.943			
3,900.0	3,818.1	3,724.4	3,547.2	15.2	0.0	-93.53	-716.4	-533.6	781.7	766.5	15.16	51.579			
4,000.0	3,914.7	3,832.4	3,642.3	15.7	0.0	-92.86	-755.9	-566.4	818.4	802.7	15.70	52.114			
4,100.0	4,011.3	3,957.3	3,754.7	16.3	0.0	-92.46	-798.2	-600.6	852.6	836.3	16.25	52.458			
4,200.0	4,107.9	4,089.2	3,876.6	16.8	0.0	-92.45	-837.4	-632.1	882.5	865.7	16.80	52.536			
4,300.0	4,204.5	4,200.9	3,981.5	17.3	0.0	-92.71	-867.8	-655.1	910.4	893.0	17.34	52.487			
4,318.3	4,222.2	4,227.7	4,007.0	17.4	0.0	-92.79	-874.7	-660.3	915.1	897.7	17.44	52.460			
4,400.0	4,301.6	4,318.2	4,093.1	17.8	0.0	-93.70	-896.4	-677.2	935.1	917.3	17.81	52.519			
4,500.0	4,399.9	4,441.5	4,211.3	18.1	0.0	-94.44	-924.5	-698.3	958.2	940.1	18.11	52.906			
4,600.0	4,499.2	4,586.6	4,352.4	18.4	0.0	-94.69	-950.5	-720.4	975.8	957.4	18.35	53.185			
4,700.0	4,599.0	4,701.2	4,464.5	18.5	0.0	-94.62	-968.4	-735.7	991.0	972.5	18.51	53.531			
4,746.0	4,645.0	4,766.7	4,528.9	18.6	0.0	176.39	-977.2	-743.6	996.9	978.3	18.57	53.691			

CC - Min centre to center distance or convergent point, SF - min separation factor, ES - min ellipse separation

Company:	Ursa Operating Company, LLC	Local Co-ordinate Reference:	Well McLin C6
Project:	Rockies Region	TVD Reference:	McLin C6 @ 5741.4ft (Original Well Elev)
Reference Site:	McLin C	MD Reference:	McLin C6 @ 5741.4ft (Original Well Elev)
Site Error:	0.0ft	North Reference:	True
Reference Well:	McLin C6	Survey Calculation Method:	Minimum Curvature
Well Error:	0.0ft	Output errors are at	2.00 sigma
Reference Wellbore	Wellbore #1	Database:	EDM 2003.21 Single User Db
Reference Design:	Design #1	Offset TVD Reference:	Offset Datum

Offset Design													Offset Site Error:	0.0 ft
McLin C - MCLIN C18 - Wellbore #1 - Actual													Offset Well Error:	0.0 ft
Survey Program: 100-														
Reference				Offset				Semi Major Axis						
Measured Depth (ft)	Vertical Depth (ft)	Measured Depth (ft)	Vertical Depth (ft)	Reference (ft)	Offset (ft)	Highside Toolface (°)	Offset Wellbore Centre +N/-S (ft)	+E/-W (ft)	Between Centres (ft)	Between Ellipses (ft)	Minimum Separation (ft)	Separation Factor	Warning	
4,800.0	4,699.0	4,843.4	4,604.8	18.6	0.0	176.87	-985.5	-751.5	1,002.4	983.8	18.63	53.803		
4,900.0	4,799.0	4,953.9	4,714.3	18.8	0.0	177.46	-996.0	-761.2	1,011.6	992.8	18.76	53.930		
5,000.0	4,899.0	5,089.9	4,849.5	18.9	0.0	178.08	-1,005.5	-771.9	1,018.2	999.4	18.88	53.922		
5,100.0	4,999.0	5,224.9	4,984.2	19.0	0.0	178.55	-1,009.8	-780.1	1,021.2	1,002.2	19.01	53.719		
5,200.0	5,099.0	5,337.0	5,096.2	19.1	0.0	178.82	-1,010.9	-784.9	1,022.1	1,003.0	19.14	53.413		
5,300.0	5,199.0	5,449.8	5,208.9	19.3	0.0	178.99	-1,010.5	-787.9	1,021.7	1,002.4	19.26	53.035		
5,400.0	5,299.0	5,556.4	5,315.5	19.4	0.0	179.06	-1,009.1	-789.2	1,020.4	1,001.0	19.39	52.613		
5,500.0	5,399.0	5,660.5	5,419.6	19.5	0.0	179.07	-1,007.2	-789.4	1,018.5	999.0	19.52	52.166		
5,600.0	5,499.0	5,740.6	5,499.7	19.7	0.0	179.06	-1,006.2	-789.2	1,017.3	997.6	19.66	51.752		
5,602.7	5,501.7	5,742.6	5,501.7	19.7	0.0	179.06	-1,006.2	-789.2	1,017.3	997.6	19.66	51.742		
5,700.0	5,599.0	5,832.3	5,591.4	19.8	0.0	179.00	-1,006.8	-788.1	1,018.0	998.2	19.79	51.436		
5,800.0	5,699.0	5,935.2	5,694.3	19.9	0.0	178.94	-1,007.4	-787.1	1,018.6	998.6	19.93	51.116		
5,900.0	5,799.0	6,033.4	5,792.4	20.1	0.0	178.99	-1,007.9	-788.0	1,019.1	999.0	20.06	50.790		
6,000.0	5,899.0	6,132.5	5,891.6	20.2	0.0	179.04	-1,008.6	-788.8	1,019.8	999.6	20.20	50.476		
6,100.0	5,999.0	6,237.3	5,996.4	20.3	0.0	179.05	-1,009.2	-789.0	1,020.3	1,000.0	20.34	50.154		
6,200.0	6,099.0	6,347.2	6,106.3	20.5	0.0	179.01	-1,008.9	-788.3	1,020.1	999.6	20.49	49.794		
6,300.0	6,199.0	6,442.5	6,201.6	20.6	0.0	178.96	-1,008.5	-787.4	1,019.6	999.0	20.63	49.426		
6,400.0	6,299.0	6,543.6	6,302.7	20.8	0.0	178.91	-1,008.1	-786.5	1,019.3	998.5	20.77	49.066		
6,500.0	6,399.0	6,641.8	6,400.8	20.9	0.0	178.84	-1,007.8	-785.3	1,019.0	998.1	20.92	48.712		
6,600.0	6,499.0	6,743.1	6,502.1	21.1	0.0	178.76	-1,007.6	-783.8	1,018.8	997.7	21.07	48.359		
6,698.6	6,597.6	6,838.6	6,597.6	21.2	0.0	178.66	-1,007.3	-782.2	1,018.5	997.3	21.21	48.013		
6,700.0	6,599.0	6,839.8	6,598.9	21.2	0.0	178.66	-1,007.3	-782.2	1,018.5	997.3	21.22	48.008		
6,800.0	6,699.0	6,931.0	6,690.0	21.4	0.0	178.65	-1,007.7	-781.9	1,019.0	997.7	21.37	47.694		
6,900.0	6,799.0	7,025.3	6,784.3	21.5	0.0	178.61	-1,008.8	-781.1	1,020.2	998.6	21.52	47.410		
7,000.0	6,899.0	7,116.5	6,875.5	21.7	0.0	178.43	-1,010.4	-777.9	1,022.1	1,000.4	21.67	47.166		
7,100.0	6,999.0	7,215.6	6,974.5	21.8	0.0	178.27	-1,012.8	-775.0	1,024.6	1,002.7	21.82	46.949		
7,200.0	7,099.0	7,328.9	7,087.7	22.0	0.0	178.23	-1,014.8	-774.2	1,026.4	1,004.4	21.98	46.700		
7,300.0	7,199.0	7,437.1	7,195.9	22.1	0.0	178.19	-1,015.4	-773.5	1,026.9	1,004.8	22.13	46.393		
7,343.0	7,242.0	7,480.5	7,239.3	22.2	0.0	178.16	-1,015.5	-773.0	1,027.0	1,004.8	22.20	46.258		

Company:	Ursa Operating Company, LLC	Local Co-ordinate Reference:	Well McLin C6
Project:	Rockies Region	TVD Reference:	McLin C6 @ 5741.4ft (Original Well Elev)
Reference Site:	McLin C	MD Reference:	McLin C6 @ 5741.4ft (Original Well Elev)
Site Error:	0.0ft	North Reference:	True
Reference Well:	McLin C6	Survey Calculation Method:	Minimum Curvature
Well Error:	0.0ft	Output errors are at	2.00 sigma
Reference Wellbore	Wellbore #1	Database:	EDM 2003.21 Single User Db
Reference Design:	Design #1	Offset TVD Reference:	Offset Datum

Offset Design													McLin C - MCLIN C19 - Wellbore #1 - Actual		Offset Site Error: 0.0 ft	
Survey Program: 100-													Offset Well Error: 0.0 ft			
Reference		Offset		Semi Major Axis			Distance									
Measured Depth	Vertical Depth	Measured Depth	Vertical Depth	Reference	Offset	Highside Toolface	Offset Wellbore Centre		Between Centres	Between Ellipses	Minimum Separation	Separation Factor	Warning			
(ft)	(ft)	(ft)	(ft)	(ft)	(ft)	(°)	+N/-S (ft)	+E/-W (ft)	(ft)	(ft)	(ft)					
0.0	0.0	0.0	0.0	0.0	0.0	-179.88	-54.7	-0.1	54.7							
100.0	100.0	100.1	100.1	0.1	0.0	179.94	-54.6	0.1	54.6	54.6	0.10	573.581				
200.0	200.0	200.1	200.1	0.3	0.0	179.41	-54.4	0.6	54.4	54.1	0.32	170.125				
300.0	300.0	300.1	300.1	0.5	0.0	178.89	-54.2	1.1	54.2	53.7	0.54	99.499				
400.0	400.0	400.1	400.1	0.8	0.0	178.43	-54.0	1.5	54.0	53.3	0.77	70.202				
466.2	466.2	466.2	466.2	0.9	0.0	178.09	-54.0	1.8	54.0	53.1	0.92	58.790 CC				
500.0	500.0	500.0	500.0	1.0	0.0	177.93	-54.0	2.0	54.0	53.0	0.99	54.307				
600.0	600.0	600.0	600.0	1.2	0.0	177.61	-54.0	2.3	54.1	52.8	1.22	44.346				
700.0	700.0	699.9	699.9	1.4	0.0	177.42	-54.1	2.4	54.2	52.7	1.44	37.513				
800.0	800.0	799.9	799.9	1.7	0.0	177.24	-54.2	2.6	54.3	52.6	1.67	32.549				
900.0	900.0	899.9	899.9	1.9	0.0	177.03	-54.4	2.8	54.5	52.6	1.89	28.794				
1,000.0	1,000.0	999.9	999.9	2.1	0.0	176.72	-54.7	3.1	54.8	52.6	2.12	25.855				
1,100.0	1,100.0	1,100.1	1,100.1	2.3	0.0	176.38	-54.8	3.5	54.9	52.5	2.34	23.429				
1,104.5	1,104.5	1,104.5	1,104.5	2.4	0.0	176.36	-54.8	3.5	54.9	52.5	2.35	23.327 ES				
1,200.0	1,200.0	1,198.3	1,198.2	2.6	0.0	176.33	-56.1	3.6	56.2	53.6	2.57	21.892 SF				
1,300.0	1,299.9	1,295.2	1,295.0	2.8	0.0	-96.70	-61.2	3.6	61.8	59.1	2.78	22.241				
1,400.0	1,399.5	1,391.3	1,390.5	3.0	0.0	-101.89	-71.5	3.1	73.8	70.8	2.99	24.666				
1,500.0	1,498.3	1,487.2	1,485.4	3.2	0.0	-107.44	-85.3	1.1	91.2	87.9	3.23	28.241				
1,600.0	1,596.0	1,582.5	1,579.2	3.5	0.0	-111.98	-101.9	-3.4	113.3	109.8	3.50	32.348				
1,627.6	1,622.8	1,608.8	1,604.9	3.6	0.0	-113.09	-106.9	-5.0	120.2	116.6	3.59	33.496				
1,700.0	1,692.7	1,677.1	1,671.7	3.9	0.0	-115.68	-120.7	-10.1	139.2	135.3	3.83	36.320				
1,800.0	1,789.3	1,772.6	1,764.2	4.3	0.0	-117.13	-142.2	-19.7	166.4	162.2	4.20	39.639				
1,900.0	1,885.9	1,868.1	1,855.9	4.7	0.0	-117.01	-165.5	-32.6	193.8	189.2	4.60	42.128				
2,000.0	1,982.5	1,960.3	1,943.1	5.2	0.0	-115.71	-190.7	-48.4	222.2	217.1	5.04	44.102				
2,100.0	2,079.1	2,049.7	2,026.6	5.7	0.0	-114.01	-218.1	-65.5	252.8	247.3	5.50	45.948				
2,200.0	2,175.7	2,139.9	2,109.2	6.1	0.0	-111.96	-248.5	-84.8	285.7	279.7	5.99	47.679				
2,300.0	2,272.3	2,231.0	2,191.4	6.6	0.0	-109.67	-281.0	-106.9	319.8	313.3	6.50	49.175				
2,400.0	2,368.9	2,321.9	2,272.1	7.2	0.0	-107.28	-314.9	-131.4	355.0	348.0	7.03	50.513				
2,500.0	2,465.6	2,412.7	2,352.7	7.7	0.0	-105.34	-349.0	-155.7	391.0	383.4	7.56	51.731				
2,600.0	2,562.2	2,502.8	2,432.4	8.2	0.0	-103.72	-383.4	-179.7	428.0	419.9	8.09	52.904				
2,700.0	2,658.8	2,594.6	2,513.8	8.7	0.0	-102.38	-418.4	-203.8	465.3	456.6	8.63	53.941				
2,800.0	2,755.4	2,683.9	2,592.6	9.2	0.0	-101.20	-453.1	-227.5	503.4	494.2	9.16	54.939				
2,900.0	2,852.0	2,779.8	2,677.4	9.8	0.0	-100.14	-490.0	-252.8	541.3	531.6	9.70	55.790				
3,000.0	2,948.6	2,872.4	2,759.6	10.3	0.0	-99.34	-525.3	-276.6	579.1	568.8	10.24	56.542				
3,100.0	3,045.2	2,965.7	2,842.3	10.8	0.0	-98.58	-560.8	-301.0	616.9	606.1	10.78	57.207				
3,200.0	3,141.8	3,059.0	2,925.0	11.4	0.0	-97.86	-596.2	-326.0	654.5	643.2	11.33	57.785				
3,300.0	3,238.4	3,147.2	3,003.0	11.9	0.0	-97.23	-629.9	-349.9	692.5	680.6	11.87	58.335				
3,400.0	3,335.0	3,234.3	3,079.6	12.4	0.0	-96.63	-663.7	-373.6	731.2	718.8	12.42	58.894				
3,500.0	3,431.6	3,332.9	3,166.6	13.0	0.0	-96.08	-701.8	-399.9	769.7	756.8	12.96	59.386				
3,600.0	3,528.2	3,419.8	3,243.6	13.5	0.0	-95.69	-735.3	-422.5	808.3	794.8	13.51	59.846				
3,700.0	3,624.8	3,510.9	3,324.1	14.1	0.0	-95.30	-770.8	-446.3	847.3	833.2	14.05	60.294				
3,800.0	3,721.5	3,614.5	3,416.2	14.6	0.0	-95.00	-810.3	-472.2	885.6	871.0	14.60	60.663				
3,900.0	3,818.1	3,702.7	3,494.9	15.2	0.0	-94.77	-843.7	-494.1	923.6	908.5	15.14	60.987				
4,000.0	3,914.7	3,791.0	3,572.8	15.7	0.0	-94.44	-877.8	-517.8	962.3	946.6	15.69	61.319				
4,100.0	4,011.3	3,893.0	3,662.6	16.3	0.0	-94.00	-916.8	-546.5	1,000.6	984.4	16.24	61.605				
4,200.0	4,107.9	3,972.4	3,732.3	16.8	0.0	-93.66	-947.2	-569.2	1,039.0	1,022.2	16.79	61.877				
4,300.0	4,204.5	4,075.2	3,822.8	17.3	0.0	-93.28	-986.8	-598.1	1,077.7	1,060.3	17.34	62.145				
4,318.3	4,222.2	4,097.1	3,842.2	17.4	0.0	-93.23	-995.0	-603.8	1,084.6	1,067.2	17.44	62.185				
4,400.0	4,301.6	4,197.6	3,932.4	17.8	0.0	-94.07	-1,031.6	-628.7	1,114.5	1,096.7	17.80	62.605				
4,500.0	4,399.9	4,324.3	4,048.4	18.1	0.0	-94.84	-1,074.3	-656.3	1,148.1	1,130.0	18.11	63.406				
4,600.0	4,499.2	4,423.0	4,139.2	18.4	0.0	-95.29	-1,105.9	-678.8	1,179.6	1,161.3	18.34	64.325				
4,700.0	4,599.0	4,539.7	4,246.7	18.5	0.0	-95.24	-1,142.7	-705.3	1,210.4	1,191.9	18.50	65.414				

CC - Min centre to center distance or convergent point, SF - min separation factor, ES - min ellipse separation

Company:	Ursa Operating Company, LLC	Local Co-ordinate Reference:	Well McLin C6
Project:	Rockies Region	TVD Reference:	McLin C6 @ 5741.4ft (Original Well Elev)
Reference Site:	McLin C	MD Reference:	McLin C6 @ 5741.4ft (Original Well Elev)
Site Error:	0.0ft	North Reference:	True
Reference Well:	McLin C6	Survey Calculation Method:	Minimum Curvature
Well Error:	0.0ft	Output errors are at	2.00 sigma
Reference Wellbore	Wellbore #1	Database:	EDM 2003.21 Single User Db
Reference Design:	Design #1	Offset TVD Reference:	Offset Datum

Offset Design													Offset Site Error:	0.0 ft
Survey Program: 100-													Offset Well Error:	0.0 ft
McLin C - MCLIN C19 - Wellbore #1 - Actual														
Reference		Offset		Semi Major Axis			Distance							Warning
Measured Depth (ft)	Vertical Depth (ft)	Measured Depth (ft)	Vertical Depth (ft)	Reference (ft)	Offset (ft)	Highside Toolface (°)	Offset Wellbore Centre +N/-S (ft)	+E/-W (ft)	Between Centres (ft)	Between Ellipses (ft)	Minimum Separation (ft)	Separation Factor		
4,746.0	4,645.0	4,596.3	4,299.5	18.6	0.0	175.65	-1,159.4	-716.9	1,223.6	1,205.1	18.56	65.939		
4,800.0	4,699.0	4,682.5	4,380.8	18.6	0.0	176.49	-1,183.6	-732.6	1,238.5	1,219.8	18.63	66.487		
4,900.0	4,799.0	4,891.7	4,582.3	18.8	0.0	178.12	-1,228.8	-765.3	1,259.3	1,240.5	18.76	67.116		
5,000.0	4,899.0	5,154.2	4,841.6	18.9	0.0	179.33	-1,258.7	-791.0	1,271.1	1,252.2	18.89	67.290		
5,100.0	4,999.0	5,343.3	5,030.5	19.0	0.0	179.60	-1,259.7	-797.0	1,271.1	1,252.1	19.01	66.854		
5,200.0	5,099.0	5,452.6	5,139.7	19.1	0.0	179.54	-1,256.1	-795.8	1,267.8	1,248.6	19.14	66.241		
5,300.0	5,199.0	5,536.6	5,223.6	19.3	0.0	179.48	-1,253.8	-794.3	1,265.1	1,245.8	19.27	65.666		
5,400.0	5,299.0	5,623.1	5,310.2	19.4	0.0	179.39	-1,252.7	-792.4	1,263.9	1,244.5	19.39	65.165		
5,500.0	5,399.0	5,720.9	5,407.9	19.5	0.0	179.27	-1,251.9	-789.9	1,263.1	1,243.5	19.53	64.689		
5,600.0	5,499.0	5,819.5	5,506.5	19.7	0.0	179.12	-1,251.3	-786.5	1,262.4	1,242.8	19.66	64.222		
5,700.0	5,599.0	5,914.0	5,600.9	19.8	0.0	178.97	-1,250.8	-783.2	1,262.0	1,242.2	19.79	63.764		
5,717.2	5,616.2	5,929.4	5,616.2	19.8	0.0	178.95	-1,250.8	-782.8	1,262.0	1,242.1	19.81	63.689		
5,800.0	5,699.0	6,008.1	5,695.0	19.9	0.0	178.88	-1,250.9	-781.3	1,262.2	1,242.2	19.93	63.341		
5,900.0	5,799.0	6,109.7	5,796.6	20.1	0.0	178.86	-1,251.2	-780.8	1,262.4	1,242.4	20.06	62.921		
6,000.0	5,899.0	6,208.2	5,895.1	20.2	0.0	178.84	-1,251.4	-780.3	1,262.6	1,242.4	20.20	62.498		
6,100.0	5,999.0	6,310.3	5,997.1	20.3	0.0	178.81	-1,251.7	-779.6	1,263.0	1,242.6	20.34	62.083		
6,200.0	6,099.0	6,407.1	6,094.0	20.5	0.0	178.83	-1,251.9	-780.2	1,263.1	1,242.6	20.49	61.660		
6,300.0	6,199.0	6,505.6	6,192.5	20.6	0.0	178.85	-1,252.4	-780.7	1,263.7	1,243.0	20.63	61.257		
6,400.0	6,299.0	6,624.0	6,310.8	20.8	0.0	178.89	-1,252.3	-781.5	1,263.6	1,242.8	20.77	60.826		
6,500.0	6,399.0	6,722.8	6,409.6	20.9	0.0	178.96	-1,251.5	-782.9	1,262.7	1,241.8	20.92	60.358		
6,600.0	6,499.0	6,825.6	6,512.4	21.1	0.0	179.01	-1,250.5	-784.0	1,261.7	1,240.7	21.07	59.889		
6,700.0	6,599.0	6,927.1	6,613.9	21.2	0.0	179.02	-1,249.4	-784.4	1,260.7	1,239.5	21.22	59.417		
6,800.0	6,699.0	7,032.2	6,719.0	21.4	0.0	178.98	-1,247.9	-783.6	1,259.2	1,237.9	21.37	58.932		
6,900.0	6,799.0	7,130.6	6,817.4	21.5	0.0	178.93	-1,246.3	-782.5	1,257.6	1,236.1	21.52	58.444		
7,000.0	6,899.0	7,233.6	6,920.3	21.7	0.0	178.91	-1,244.9	-782.1	1,256.3	1,234.6	21.67	57.968		
7,100.0	6,999.0	7,341.6	7,028.4	21.8	0.0	178.89	-1,242.5	-781.5	1,254.1	1,232.3	21.83	57.460		
7,200.0	7,099.0	7,440.0	7,126.7	22.0	0.0	178.84	-1,240.2	-780.5	1,251.8	1,229.8	21.98	56.948		
7,300.0	7,199.0	7,534.9	7,221.6	22.1	0.0	178.77	-1,238.3	-779.1	1,249.8	1,227.6	22.14	56.455		
7,343.0	7,242.0	7,569.0	7,255.7	22.2	0.0	178.74	-1,237.7	-778.5	1,249.0	1,226.8	22.20	56.250		

Company:	Ursa Operating Company, LLC	Local Co-ordinate Reference:	Well McLin C6
Project:	Rockies Region	TVD Reference:	McLin C6 @ 5741.4ft (Original Well Elev)
Reference Site:	McLin C	MD Reference:	McLin C6 @ 5741.4ft (Original Well Elev)
Site Error:	0.0ft	North Reference:	True
Reference Well:	McLin C6	Survey Calculation Method:	Minimum Curvature
Well Error:	0.0ft	Output errors are at	2.00 sigma
Reference Wellbore	Wellbore #1	Database:	EDM 2003.21 Single User Db
Reference Design:	Design #1	Offset TVD Reference:	Offset Datum

Offset Design														Offset Site Error:	0.0 ft
Survey Program: 100-														Offset Well Error:	0.0 ft
McLin C - MCLIN C2 - Wellbore #1 - Actual															
Reference		Offset		Semi Major Axis		Distance									
Measured Depth (ft)	Vertical Depth (ft)	Measured Depth (ft)	Vertical Depth (ft)	Reference (ft)	Offset (ft)	Highside Toolface (°)	Offset Wellbore Centre +N/-S (ft)	+E/-W (ft)	Between Centres (ft)	Between Ellipses (ft)	Minimum Separation (ft)	Separation Factor	Warning		
0.0	0.0	0.0	0.0	0.0	0.0	55.35	25.0	36.2	43.9						
100.0	100.0	99.7	99.7	0.1	0.0	55.66	25.0	36.6	44.3	44.2	0.10	464.874			
200.0	200.0	200.0	200.0	0.3	0.0	55.81	24.9	36.7	44.4	44.1	0.32	138.663			
233.3	233.3	233.3	233.3	0.4	0.0	55.65	25.0	36.6	44.3	43.9	0.39	112.184	ES		
300.0	300.0	299.5	299.5	0.5	0.0	55.06	25.6	36.6	44.6	44.1	0.54	81.937			
400.0	400.0	399.7	399.7	0.8	0.0	54.85	26.2	37.2	45.5	44.8	0.77	59.187			
500.0	500.0	500.0	500.0	1.0	0.0	55.08	26.2	37.5	45.7	44.7	0.99	45.992			
600.0	600.0	599.5	599.5	1.2	0.0	54.55	26.7	37.5	46.1	44.8	1.22	37.784			
700.0	700.0	699.9	699.9	1.4	0.0	54.59	27.1	38.1	46.7	45.3	1.44	32.343			
800.0	800.0	800.0	800.0	1.7	0.0	54.83	26.8	38.0	46.5	44.9	1.67	27.882			
802.5	802.5	802.7	802.7	1.7	0.0	54.82	26.8	38.0	46.5	44.8	1.67	27.781			
844.5	844.5	844.5	844.5	1.8	0.0	54.65	26.9	37.9	46.4	44.7	1.77	26.246			
900.0	900.0	899.6	899.6	1.9	0.0	54.40	27.2	37.9	46.7	44.8	1.89	24.650			
1,000.0	1,000.0	1,000.1	1,000.0	2.1	0.0	53.77	27.6	37.7	46.7	44.6	2.12	22.065			
1,014.5	1,014.5	1,014.5	1,014.5	2.2	0.0	53.69	27.7	37.7	46.7	44.6	2.15	21.727			
1,100.0	1,100.0	1,099.8	1,099.7	2.3	0.0	53.35	28.0	37.7	47.0	44.6	2.34	20.043			
1,200.0	1,200.0	1,198.9	1,198.9	2.6	0.0	53.38	28.7	38.6	48.1	45.5	2.57	18.738	SF		
1,300.0	1,299.9	1,297.0	1,296.9	2.8	0.0	143.83	31.3	41.3	54.3	51.6	2.78	19.566			
1,400.0	1,399.5	1,393.1	1,392.7	3.0	0.0	146.71	36.8	46.5	69.5	66.6	2.97	23.391			
1,500.0	1,498.3	1,486.0	1,484.9	3.2	0.0	149.88	44.4	54.9	94.3	91.1	3.17	29.757			
1,600.0	1,596.0	1,574.3	1,571.9	3.5	0.0	152.48	53.9	66.5	129.1	125.7	3.37	38.314			
1,627.6	1,622.8	1,597.8	1,595.0	3.6	0.0	153.05	56.8	70.2	140.4	137.0	3.43	40.973			
1,700.0	1,692.7	1,658.3	1,653.9	3.9	0.0	154.58	64.8	80.6	171.9	168.3	3.60	47.714			
1,800.0	1,789.3	1,739.1	1,732.1	4.3	0.0	155.80	77.1	96.9	218.6	214.8	3.86	56.650			
1,900.0	1,885.9	1,816.0	1,805.7	4.7	0.0	156.32	90.7	114.6	268.7	264.5	4.13	65.089			
2,000.0	1,982.5	1,889.3	1,874.9	5.2	0.0	156.40	105.8	133.5	322.0	317.6	4.41	73.044			
2,100.0	2,079.1	1,958.4	1,939.1	5.7	0.0	156.23	122.1	153.3	378.7	374.0	4.70	80.550			
2,200.0	2,175.7	2,024.7	1,999.7	6.1	0.0	156.02	138.9	174.2	438.3	433.3	5.00	87.628			
2,300.0	2,272.3	2,089.2	2,057.8	6.6	0.0	155.75	156.5	196.1	500.4	495.1	5.31	94.227			
2,400.0	2,368.9	2,149.5	2,111.2	7.2	0.0	155.47	174.1	217.8	564.8	559.2	5.63	100.382			
2,500.0	2,465.6	2,194.0	2,150.1	7.7	0.0	155.24	187.8	234.6	631.7	625.7	5.95	106.217			
2,600.0	2,562.2	2,257.5	2,204.5	8.2	0.0	154.92	208.2	260.1	700.5	694.2	6.28	111.627			
2,700.0	2,658.8	2,312.4	2,250.7	8.7	0.0	154.68	226.5	283.6	771.6	765.0	6.61	116.784			
2,800.0	2,755.4	2,376.3	2,304.0	9.2	0.0	154.44	247.9	311.4	843.4	836.5	6.94	121.494			
2,900.0	2,852.0	2,441.2	2,358.0	9.8	0.0	154.26	269.5	340.2	915.7	908.4	7.28	125.807			
3,000.0	2,948.6	2,507.4	2,413.0	10.3	0.0	154.16	291.1	370.1	988.3	980.7	7.62	129.779			
3,100.0	3,045.2	2,576.2	2,470.1	10.8	0.0	154.06	313.6	401.1	1,060.9	1,053.0	7.95	133.387			
3,200.0	3,141.8	2,656.3	2,536.9	11.4	0.0	153.96	339.7	436.8	1,133.2	1,124.9	8.29	136.618			
3,300.0	3,238.4	2,729.2	2,598.0	11.9	0.0	153.89	363.1	469.1	1,205.0	1,196.4	8.64	139.537			
3,400.0	3,335.0	2,795.7	2,653.7	12.4	0.0	153.85	384.3	498.5	1,276.8	1,267.8	8.98	142.228			
3,500.0	3,431.6	2,857.9	2,705.7	13.0	0.0	153.81	404.2	526.4	1,348.9	1,339.6	9.32	144.752			
3,600.0	3,528.2	2,962.2	2,793.2	13.5	0.0	153.69	438.4	571.6	1,420.3	1,410.6	9.67	146.898			
3,700.0	3,624.8	3,052.4	2,869.7	14.1	0.0	153.55	468.3	608.8	1,490.3	1,480.3	10.02	148.702			
3,800.0	3,721.5	3,116.4	2,924.3	14.6	0.0	153.52	488.2	635.8	1,560.1	1,549.7	10.37	150.485			
3,900.0	3,818.1	3,195.5	2,991.8	15.2	0.0	153.58	511.4	669.8	1,630.0	1,619.3	10.71	152.252			
4,000.0	3,914.7	3,270.3	3,055.7	15.7	0.0	153.55	534.5	700.9	1,699.5	1,688.5	11.05	153.764			
4,100.0	4,011.3	3,339.3	3,114.6	16.3	0.0	153.52	556.2	729.7	1,769.2	1,757.8	11.40	155.180			
4,200.0	4,107.9	3,395.8	3,162.2	16.8	0.0	154.06	700.9	922.0	1,831.5	1,819.8	11.69	156.652			
4,300.0	4,204.5	3,448.7	3,167.4	17.3	0.0	154.77	732.1	964.6	1,871.5	1,859.5	11.96	156.451			
4,318.3	4,222.2	3,484.9	3,202.7	17.4	0.0	155.47	742.2	978.3	1,877.4	1,865.4	11.95	157.063			
4,400.0	4,301.6	3,578.9	3,296.7	17.8	0.0	156.05	741.2	979.2	1,895.3	1,883.1	12.15	155.960			
4,500.0	4,399.9	3,675.2	3,393.0	18.1	0.0	156.55	740.2	980.1	1,912.2	1,899.8	12.34	154.957			

CC - Min centre to center distance or convergent point, SF - min separation factor, ES - min ellipse separation

Company:	Ursa Operating Company, LLC	Local Co-ordinate Reference:	Well McLin C6
Project:	Rockies Region	TVD Reference:	McLin C6 @ 5741.4ft (Original Well Elev)
Reference Site:	McLin C	MD Reference:	McLin C6 @ 5741.4ft (Original Well Elev)
Site Error:	0.0ft	North Reference:	True
Reference Well:	McLin C6	Survey Calculation Method:	Minimum Curvature
Well Error:	0.0ft	Output errors are at	2.00 sigma
Reference Wellbore	Wellbore #1	Database:	EDM 2003.21 Single User Db
Reference Design:	Design #1	Offset TVD Reference:	Offset Datum

Offset Design													Offset Site Error:	0.0 ft
McLin C - MCLIN C2 - Wellbore #1 - Actual													Offset Well Error:	0.0 ft
Survey Program: 100-														
Reference				Offset			Semi Major Axis		Distance					
Measured Depth (ft)	Vertical Depth (ft)	Measured Depth (ft)	Vertical Depth (ft)	Reference (ft)	Offset (ft)	Highside Toolface (°)	Offset Wellbore Centre +N/-S (ft)	+E/-W (ft)	Between Centres (ft)	Between Ellipses (ft)	Minimum Separation (ft)	Separation Factor	Warning	
4,600.0	4,499.2	4,790.7	4,508.5	18.4	0.0	156.86	740.3	979.9	1,923.1	1,910.6	12.48	154.042		
4,700.0	4,599.0	4,876.2	4,594.0	18.5	0.0	156.95	741.5	979.4	1,928.3	1,915.8	12.59	153.178		
4,746.0	4,645.0	4,915.0	4,632.8	18.6	0.0	67.73	742.1	979.3	1,929.1	1,916.5	12.62	152.842		
4,800.0	4,699.0	4,964.0	4,681.8	18.6	0.0	67.71	743.0	979.3	1,929.6	1,916.9	12.71	151.827		
4,900.0	4,799.0	5,061.0	4,778.7	18.8	0.0	67.65	744.9	979.6	1,930.6	1,917.7	12.88	149.881		
5,000.0	4,899.0	5,157.8	4,875.5	18.9	0.0	67.65	745.5	980.5	1,931.6	1,918.6	13.05	148.027		
5,100.0	4,999.0	5,258.1	4,975.8	19.0	0.0	67.66	745.8	981.9	1,933.0	1,919.8	13.22	146.239		
5,200.0	5,099.0	5,373.0	5,090.8	19.1	0.0	67.69	745.2	983.1	1,933.8	1,920.4	13.39	144.456		
5,300.0	5,199.0	5,496.5	5,214.2	19.3	0.0	67.68	745.4	982.8	1,933.7	1,920.1	13.56	142.599		
5,400.0	5,299.0	5,585.4	5,303.2	19.4	0.0	67.68	745.0	982.5	1,933.2	1,919.4	13.73	140.755		
5,440.6	5,339.7	5,621.9	5,339.7	19.4	0.0	67.69	744.8	982.5	1,933.1	1,919.3	13.81	140.029		
5,500.0	5,399.0	5,675.8	5,393.5	19.5	0.0	67.70	744.5	982.7	1,933.2	1,919.3	13.91	138.994		
5,600.0	5,499.0	5,778.5	5,496.2	19.7	0.0	67.72	744.1	983.2	1,933.5	1,919.4	14.08	137.280		
5,700.0	5,599.0	5,914.1	5,631.8	19.8	0.0	67.72	743.6	982.3	1,932.7	1,918.5	14.26	135.511		
5,800.0	5,699.0	6,017.6	5,735.3	19.9	0.0	67.74	742.3	980.4	1,930.6	1,916.1	14.44	133.685		
5,900.0	5,799.0	6,098.9	5,816.6	20.1	0.0	67.75	741.5	979.6	1,929.2	1,914.6	14.62	131.946		
6,000.0	5,899.0	6,185.7	5,903.4	20.2	0.0	67.76	740.8	979.3	1,928.7	1,913.9	14.80	130.295		
6,027.5	5,926.6	6,209.6	5,927.2	20.2	0.0	67.77	740.7	979.3	1,928.6	1,913.8	14.85	129.852		
6,100.0	5,999.0	6,278.9	5,996.6	20.3	0.0	67.77	740.6	979.5	1,928.8	1,913.8	14.99	128.712		
6,200.0	6,099.0	6,397.6	6,115.3	20.5	0.0	67.79	739.9	979.3	1,928.3	1,913.2	15.17	127.129		
6,300.0	6,199.0	6,496.8	6,214.5	20.6	0.0	67.80	739.1	978.6	1,927.4	1,912.0	15.35	125.538		
6,400.0	6,299.0	6,587.1	6,304.8	20.8	0.0	67.81	738.9	978.1	1,926.8	1,911.3	15.54	123.995		
6,463.8	6,362.8	6,645.2	6,362.8	20.9	0.0	67.80	738.9	978.0	1,926.7	1,911.1	15.66	123.039		
6,500.0	6,399.0	6,678.5	6,396.1	20.9	0.0	67.80	739.0	978.0	1,926.8	1,911.0	15.73	122.507		
6,600.0	6,499.0	6,766.6	6,484.3	21.1	0.0	67.79	739.4	978.2	1,927.2	1,911.2	15.92	121.073		
6,700.0	6,599.0	6,855.5	6,573.1	21.2	0.0	67.78	740.1	979.1	1,928.3	1,912.2	16.11	119.713		
6,800.0	6,699.0	6,949.5	6,667.1	21.4	0.0	67.73	742.0	979.7	1,929.7	1,913.4	16.30	118.369		
6,900.0	6,799.0	7,042.9	6,760.5	21.5	0.0	67.67	744.7	980.6	1,931.7	1,915.2	16.50	117.083		
7,000.0	6,899.0	7,148.5	6,866.1	21.7	0.0	67.64	746.5	981.7	1,933.3	1,916.6	16.69	115.807		
7,100.0	6,999.0	7,231.3	6,948.8	21.8	0.0	67.61	748.1	982.9	1,935.4	1,918.5	16.89	114.593		
7,200.0	7,099.0	7,313.7	7,031.2	22.0	0.0	67.58	749.9	984.9	1,938.5	1,921.4	17.09	113.459		
7,300.0	7,199.0	7,396.0	7,113.5	22.1	0.0	67.56	751.7	987.5	1,942.2	1,925.0	17.28	112.388		
7,343.0	7,242.0	7,396.0	7,113.5	22.2	0.0	67.56	751.7	987.5	1,944.6	1,927.2	17.37	111.982		

Company:	Ursa Operating Company, LLC	Local Co-ordinate Reference:	Well McLin C6
Project:	Rockies Region	TVD Reference:	McLin C6 @ 5741.4ft (Original Well Elev)
Reference Site:	McLin C	MD Reference:	McLin C6 @ 5741.4ft (Original Well Elev)
Site Error:	0.0ft	North Reference:	True
Reference Well:	McLin C6	Survey Calculation Method:	Minimum Curvature
Well Error:	0.0ft	Output errors are at	2.00 sigma
Reference Wellbore	Wellbore #1	Database:	EDM 2003.21 Single User Db
Reference Design:	Design #1	Offset TVD Reference:	Offset Datum

Offset Design														McLin C - MCLIN C20 - Wellbore #1 - Actual	Offset Site Error:	0.0 ft
Survey Program: 960-															Offset Well Error:	0.0 ft
Measured Depth (ft)	Vertical Depth (ft)	Measured Depth (ft)	Vertical Depth (ft)	Reference (ft)	Offset (ft)	Highside Toolface (°)	Offset Wellbore Centre +N/-S (ft)	+E/-W (ft)	Between Centres (ft)	Between Ellipses (ft)	Minimum Separation (ft)	Separation Factor	Warning			
0.0	0.0	0.0	0.0	0.0	0.0	-175.42	-66.2	-5.3	66.4							
100.0	100.0	100.0	100.0	0.1	0.0	-175.40	-66.2	-5.3	66.4	66.4	0.10	698.750				
200.0	200.0	200.0	200.0	0.3	0.0	-175.31	-66.2	-5.4	66.5	66.1	0.32	207.736				
300.0	300.0	300.0	300.0	0.5	0.0	-175.17	-66.2	-5.6	66.5	65.9	0.54	122.011				
400.0	400.0	400.0	400.0	0.8	0.0	-174.97	-66.2	-5.8	66.5	65.7	0.77	86.375				
500.0	500.0	500.0	500.0	1.0	0.0	-174.72	-66.2	-6.1	66.5	65.5	0.99	66.857				
600.0	600.0	600.0	600.0	1.2	0.0	-174.41	-66.2	-6.5	66.5	65.3	1.22	54.539				
700.0	700.0	700.0	700.0	1.4	0.0	-174.04	-66.1	-6.9	66.5	65.1	1.44	46.061				
800.0	800.0	800.0	800.0	1.7	0.0	-173.62	-66.1	-7.4	66.5	64.9	1.67	39.871				
900.0	900.0	900.0	900.0	1.9	0.0	-173.14	-66.1	-7.9	66.6	64.7	1.89	35.154				
1,000.0	1,000.0	1,000.0	1,000.0	2.1	0.0	-172.65	-66.1	-8.5	66.6	64.5	2.12	31.442				
1,054.4	1,054.4	1,054.4	1,054.4	2.2	0.0	-172.51	-66.0	-8.7	66.6	64.4	2.24	29.730				
1,100.0	1,100.0	1,099.8	1,099.8	2.3	0.0	-172.47	-66.1	-8.7	66.6	64.3	2.34	28.438 ES				
1,200.0	1,200.0	1,197.4	1,197.3	2.6	0.0	-171.20	-67.5	-10.4	68.4	65.8	2.57	26.620 SF				
1,300.0	1,299.9	1,293.5	1,293.2	2.8	0.0	-80.71	-73.0	-15.6	74.4	71.7	2.78	26.771				
1,400.0	1,399.5	1,389.1	1,388.0	3.0	0.0	-83.16	-83.1	-22.0	84.6	81.6	2.99	28.282				
1,500.0	1,498.3	1,484.4	1,481.9	3.2	0.0	-87.47	-97.1	-30.1	98.9	95.7	3.23	30.585				
1,600.0	1,596.0	1,577.9	1,573.3	3.5	0.0	-92.39	-114.0	-39.6	117.2	113.7	3.53	33.212				
1,627.6	1,622.8	1,603.2	1,597.9	3.6	0.0	-93.66	-119.2	-42.6	123.2	119.6	3.62	34.013				
1,700.0	1,692.7	1,668.3	1,660.7	3.9	0.0	-96.73	-134.3	-51.0	141.0	137.1	3.89	36.266				
1,800.0	1,789.3	1,757.5	1,745.6	4.3	0.0	-99.16	-158.7	-63.9	169.8	165.5	4.28	39.634				
1,900.0	1,885.9	1,846.8	1,829.1	4.7	0.0	-100.11	-186.3	-78.7	202.0	197.3	4.71	42.866				
2,000.0	1,982.5	1,932.9	1,908.1	5.2	0.0	-99.77	-215.8	-96.1	236.9	231.7	5.17	45.844				
2,100.0	2,079.1	2,014.0	1,980.7	5.7	0.0	-99.01	-247.3	-113.8	275.8	270.2	5.64	48.893				
2,200.0	2,175.7	2,098.8	2,054.9	6.1	0.0	-97.82	-282.8	-134.5	317.6	311.5	6.13	51.790				
2,300.0	2,272.3	2,188.1	2,132.4	6.6	0.0	-96.68	-321.1	-157.0	360.5	353.8	6.63	54.330				
2,400.0	2,368.9	2,276.9	2,209.7	7.2	0.0	-96.00	-359.4	-178.0	403.6	396.5	7.14	56.508				
2,500.0	2,465.6	2,364.9	2,286.5	7.7	0.0	-95.65	-397.4	-197.5	447.2	439.6	7.66	58.407				
2,600.0	2,562.2	2,454.9	2,365.4	8.2	0.0	-95.50	-436.5	-216.3	491.0	482.9	8.18	60.062				
2,700.0	2,658.8	2,543.4	2,443.0	8.7	0.0	-95.39	-475.0	-234.6	534.9	526.2	8.70	61.497				
2,800.0	2,755.4	2,627.3	2,515.9	9.2	0.0	-95.14	-512.1	-253.3	579.3	570.1	9.23	62.796				
2,900.0	2,852.0	2,713.1	2,589.7	9.8	0.0	-94.77	-550.8	-273.7	624.6	614.8	9.76	64.017				
3,000.0	2,948.6	2,801.5	2,665.3	10.3	0.0	-94.29	-590.9	-296.1	670.1	659.8	10.29	65.116				
3,100.0	3,045.2	2,891.7	2,742.6	10.8	0.0	-93.95	-631.8	-318.0	715.6	704.8	10.83	66.096				
3,200.0	3,141.8	2,992.0	2,829.2	11.4	0.0	-93.71	-676.7	-341.6	760.6	749.3	11.36	66.932				
3,300.0	3,238.4	3,091.4	2,915.7	11.9	0.0	-93.50	-719.5	-365.2	804.0	792.1	11.90	67.540				
3,400.0	3,335.0	3,184.2	2,997.1	12.4	0.0	-93.45	-758.9	-385.6	846.8	834.4	12.44	68.057				
3,500.0	3,431.6	3,277.6	3,078.9	13.0	0.0	-93.33	-798.5	-407.3	889.5	876.5	12.98	68.503				
3,600.0	3,528.2	3,373.8	3,162.9	13.5	0.0	-93.11	-838.9	-431.2	931.7	918.2	13.53	68.875				
3,700.0	3,624.8	3,475.0	3,252.0	14.1	0.0	-92.98	-880.6	-455.3	973.2	959.1	14.07	69.163				
3,800.0	3,721.5	3,593.6	3,357.6	14.6	0.0	-92.97	-927.4	-481.9	1,013.0	998.4	14.61	69.318				
3,900.0	3,818.1	3,665.7	3,422.3	15.2	0.0	-93.02	-955.4	-497.1	1,052.3	1,037.1	15.16	69.418				
4,000.0	3,914.7	3,759.2	3,505.4	15.7	0.0	-93.04	-993.0	-517.5	1,092.8	1,077.1	15.70	69.592				
4,100.0	4,011.3	3,843.5	3,580.1	16.3	0.0	-92.96	-1,026.5	-537.6	1,132.9	1,116.7	16.25	69.719				
4,200.0	4,107.9	3,917.0	3,644.5	16.8	0.0	-92.82	-1,056.7	-556.2	1,174.3	1,157.5	16.80	69.909				
4,300.0	4,204.5	3,994.4	3,711.7	17.3	0.0	-92.67	-1,089.5	-575.9	1,217.0	1,199.6	17.34	70.164				
4,318.3	4,222.2	4,013.9	3,728.6	17.4	0.0	-92.64	-1,097.9	-580.8	1,224.9	1,207.4	17.45	70.211				
4,400.0	4,301.6	4,092.2	3,796.9	17.8	0.0	-93.75	-1,130.9	-600.3	1,259.4	1,241.6	17.80	70.735				
4,500.0	4,399.9	4,166.0	3,861.0	18.1	0.0	-94.98	-1,162.5	-618.8	1,302.1	1,284.0	18.11	71.918				
4,600.0	4,499.2	4,246.5	3,930.6	18.4	0.0	-95.95	-1,197.7	-638.7	1,345.3	1,326.9	18.33	73.402				
4,700.0	4,599.0	4,320.1	3,994.2	18.5	0.0	-96.85	-1,230.3	-656.3	1,388.8	1,370.3	18.47	75.177				
4,746.0	4,645.0	4,355.0	4,024.3	18.6	0.0	173.58	-1,246.0	-664.5	1,409.0	1,390.5	18.52	76.092				

CC - Min centre to center distance or convergent point, SF - min separation factor, ES - min ellipse separation

Company:	Ursa Operating Company, LLC	Local Co-ordinate Reference:	Well McLin C6
Project:	Rockies Region	TVD Reference:	McLin C6 @ 5741.4ft (Original Well Elev)
Reference Site:	McLin C	MD Reference:	McLin C6 @ 5741.4ft (Original Well Elev)
Site Error:	0.0ft	North Reference:	True
Reference Well:	McLin C6	Survey Calculation Method:	Minimum Curvature
Well Error:	0.0ft	Output errors are at	2.00 sigma
Reference Wellbore	Wellbore #1	Database:	EDM 2003.21 Single User Db
Reference Design:	Design #1	Offset TVD Reference:	Offset Datum

Offset Design													Offset Site Error:	0.0 ft
Survey Program: 960- McLin C - MCLIN C20 - Wellbore #1 - Actual													Offset Well Error:	0.0 ft
Measured Depth (ft)	Vertical Depth (ft)	Measured Depth (ft)	Vertical Depth (ft)	Reference (ft)	Offset (ft)	Semi Major Axis Highside Toolface (°)	Offset Wellbore Centre +N/-S (ft)	+E/-W (ft)	Between Centres (ft)	Between Ellipses (ft)	Minimum Separation (ft)	Separation Factor	Warning	
4,800.0	4,699.0	4,391.0	4,055.2	18.6	0.0	174.04	-1,262.4	-673.0	1,433.1	1,414.5	18.59	77.104		
4,900.0	4,799.0	4,470.5	4,122.8	18.8	0.0	175.08	-1,299.1	-693.1	1,478.7	1,460.0	18.73	78.963		
5,000.0	4,899.0	4,878.1	4,492.4	18.9	0.0	178.57	-1,449.5	-769.5	1,516.5	1,497.6	18.89	80.296		
5,100.0	4,999.0	5,412.5	5,019.5	19.0	0.0	179.77	-1,516.8	-799.7	1,528.0	1,508.9	19.01	80.362		
5,200.0	5,099.0	5,543.6	5,150.5	19.1	0.0	179.76	-1,512.6	-799.6	1,524.5	1,505.4	19.14	79.654		
5,300.0	5,199.0	5,632.6	5,239.5	19.3	0.0	179.77	-1,510.1	-799.7	1,521.6	1,502.3	19.27	78.978		
5,400.0	5,299.0	5,732.8	5,339.6	19.4	0.0	179.75	-1,507.4	-799.4	1,519.0	1,499.6	19.40	78.317		
5,500.0	5,399.0	5,829.7	5,436.5	19.5	0.0	179.75	-1,504.9	-799.2	1,516.3	1,496.8	19.53	77.657		
5,600.0	5,499.0	5,922.2	5,529.0	19.7	0.0	179.75	-1,502.8	-799.3	1,514.1	1,494.5	19.66	77.020		
5,700.0	5,599.0	6,019.8	5,626.5	19.8	0.0	179.74	-1,501.0	-799.2	1,512.3	1,492.5	19.79	76.406		
5,800.0	5,699.0	6,118.8	5,725.5	19.9	0.0	179.72	-1,499.2	-798.6	1,510.5	1,490.5	19.93	75.795		
5,900.0	5,799.0	6,216.6	5,823.3	20.1	0.0	179.69	-1,497.6	-797.7	1,508.8	1,488.7	20.07	75.192		
6,000.0	5,899.0	6,315.2	5,921.9	20.2	0.0	179.64	-1,496.0	-796.5	1,507.2	1,487.0	20.20	74.598		
6,100.0	5,999.0	6,414.1	6,020.8	20.3	0.0	179.60	-1,494.6	-795.4	1,505.8	1,485.4	20.35	74.010		
6,200.0	6,099.0	6,518.7	6,125.3	20.5	0.0	179.55	-1,492.9	-794.0	1,504.2	1,483.7	20.49	73.422		
6,300.0	6,199.0	6,628.2	6,234.8	20.6	0.0	179.49	-1,490.6	-792.5	1,502.1	1,481.5	20.63	72.811		
6,400.0	6,299.0	6,717.0	6,323.6	20.8	0.0	179.43	-1,488.5	-791.1	1,499.8	1,479.0	20.78	72.192		
6,497.1	6,396.1	6,789.5	6,396.1	20.9	0.0	179.39	-1,487.7	-790.0	1,498.7	1,477.8	20.92	71.651		
6,500.0	6,399.0	6,791.5	6,398.1	20.9	0.0	179.39	-1,487.7	-790.0	1,498.7	1,477.8	20.92	71.637		
6,600.0	6,499.0	6,880.3	6,486.9	21.1	0.0	179.37	-1,488.3	-789.5	1,499.4	1,478.3	21.07	71.166		
6,700.0	6,599.0	6,982.6	6,589.1	21.2	0.0	179.46	-1,489.1	-791.7	1,500.2	1,479.0	21.22	70.702		
6,800.0	6,699.0	7,081.4	6,687.9	21.4	0.0	179.53	-1,489.8	-793.6	1,500.8	1,479.5	21.37	70.235		
6,900.0	6,799.0	7,171.7	6,778.2	21.5	0.0	179.57	-1,490.7	-794.7	1,501.9	1,480.4	21.52	69.788		
7,000.0	6,899.0	7,263.3	6,869.8	21.7	0.0	179.61	-1,492.2	-795.7	1,503.6	1,481.9	21.67	69.373		
7,100.0	6,999.0	7,397.8	7,004.3	21.8	0.0	179.65	-1,493.5	-796.6	1,504.5	1,482.7	21.83	68.925		
7,200.0	7,099.0	7,504.4	7,110.9	22.0	0.0	179.64	-1,492.8	-796.5	1,503.9	1,481.9	21.98	68.409		
7,300.0	7,199.0	7,604.4	7,210.9	22.1	0.0	179.63	-1,492.0	-796.2	1,503.1	1,480.9	22.14	67.890		
7,343.0	7,242.0	7,647.4	7,253.9	22.2	0.0	179.63	-1,491.7	-796.1	1,502.7	1,480.5	22.21	67.668		

Company:	Ursa Operating Company, LLC	Local Co-ordinate Reference:	Well McLin C6
Project:	Rockies Region	TVD Reference:	McLin C6 @ 5741.4ft (Original Well Elev)
Reference Site:	McLin C	MD Reference:	McLin C6 @ 5741.4ft (Original Well Elev)
Site Error:	0.0ft	North Reference:	True
Reference Well:	McLin C6	Survey Calculation Method:	Minimum Curvature
Well Error:	0.0ft	Output errors are at	2.00 sigma
Reference Wellbore	Wellbore #1	Database:	EDM 2003.21 Single User Db
Reference Design:	Design #1	Offset TVD Reference:	Offset Datum

Offset Design													McLin C - MCLIN C22 - Wellbore #1 - Actual		Offset Site Error: 0.0 ft	
Survey Program: 990-													Offset Well Error: 0.0 ft			
Reference		Offset		Semi Major Axis			Distance							Warning		
Measured Depth	Vertical Depth	Measured Depth	Vertical Depth	Reference	Offset	Highside Toolface	Offset Wellbore Centre		Between Centres	Between Ellipses	Minimum Separation	Separation Factor				
(ft)	(ft)	(ft)	(ft)	(ft)	(ft)	(°)	+N/-S (ft)	+E/-W (ft)	(ft)	(ft)	(ft)					
0.0	0.0	0.0	0.0	0.0	0.0	114.62	-9.4	20.5	22.5							
100.0	100.0	100.0	100.0	0.1	0.0	114.63	-9.4	20.5	22.5	22.4	0.10	236.864				
200.0	200.0	200.0	200.0	0.3	0.0	114.68	-9.4	20.4	22.5	22.1	0.32	70.201				
300.0	300.0	300.0	300.0	0.5	0.0	114.76	-9.4	20.3	22.3	21.8	0.54	41.018				
400.0	400.0	400.0	400.0	0.8	0.0	114.87	-9.3	20.1	22.2	21.4	0.77	28.826				
500.0	500.0	500.1	500.1	1.0	0.0	115.02	-9.3	19.9	22.0	21.0	0.99	22.101				
600.0	600.0	600.1	600.1	1.2	0.0	115.20	-9.2	19.7	21.7	20.5	1.22	17.819				
700.0	700.0	700.1	700.1	1.4	0.0	115.42	-9.2	19.3	21.4	20.0	1.44	14.838				
800.0	800.0	800.1	800.1	1.7	0.0	115.69	-9.1	19.0	21.1	19.4	1.67	12.633				
900.0	900.0	900.1	900.1	1.9	0.0	116.00	-9.1	18.6	20.7	18.8	1.89	10.928				
1,000.0	1,000.0	1,000.1	1,000.1	2.1	0.0	116.36	-9.0	18.2	20.3	18.1	2.12	9.564				
1,093.3	1,093.3	1,093.3	1,093.3	2.3	0.0	116.82	-9.0	17.7	19.9	17.5	2.33	8.536 CC				
1,100.0	1,100.0	1,100.0	1,100.0	2.3	0.0	116.92	-9.0	17.7	19.9	17.5	2.34	8.484 ES				
1,200.0	1,200.0	1,199.4	1,199.3	2.6	0.0	117.72	-9.9	18.9	21.4	18.8	2.57	8.315 SF				
1,300.0	1,299.9	1,298.1	1,297.9	2.8	0.0	-159.30	-10.5	23.9	29.1	26.3	2.78	10.465				
1,400.0	1,399.5	1,394.7	1,394.1	3.0	0.0	-167.28	-10.5	33.2	47.0	44.0	2.97	15.843				
1,500.0	1,498.3	1,487.7	1,486.2	3.2	0.0	-172.17	-10.3	46.3	75.4	72.3	3.15	23.952				
1,600.0	1,596.0	1,574.7	1,571.6	3.5	0.0	-174.94	-9.9	62.6	114.3	111.0	3.33	34.327				
1,627.6	1,622.8	1,597.4	1,593.7	3.6	0.0	-175.47	-9.8	67.6	127.0	123.6	3.38	37.563				
1,700.0	1,692.7	1,655.9	1,650.4	3.9	0.0	-176.64	-9.4	82.1	162.3	158.7	3.54	45.804				
1,800.0	1,789.3	1,734.6	1,726.0	4.3	0.0	-177.59	-9.0	104.0	213.8	210.1	3.78	56.637				
1,900.0	1,885.9	1,806.7	1,794.4	4.7	0.0	-178.14	-8.9	126.9	269.1	265.1	4.02	66.997				
2,000.0	1,982.5	1,877.8	1,860.8	5.2	0.0	-178.48	-9.1	152.3	327.6	323.4	4.26	76.860				
2,100.0	2,079.1	1,947.8	1,925.4	5.7	0.0	-178.63	-9.7	179.2	388.6	384.1	4.51	86.080				
2,200.0	2,175.7	2,018.1	1,989.7	6.1	0.0	-178.78	-10.3	207.7	451.4	446.6	4.77	94.608				
2,300.0	2,272.3	2,093.3	2,058.1	6.6	0.0	-178.96	-10.5	238.9	514.9	509.9	5.03	102.346				
2,400.0	2,368.9	2,168.1	2,126.0	7.2	0.0	-179.17	-10.2	270.1	578.7	573.4	5.29	109.322				
2,500.0	2,465.6	2,247.6	2,198.2	7.7	0.0	-179.39	-9.4	303.4	642.7	637.1	5.56	115.604				
2,600.0	2,562.2	2,326.2	2,269.8	8.2	0.0	-179.59	-8.5	336.0	706.2	700.3	5.83	121.187				
2,700.0	2,658.8	2,402.4	2,339.0	8.7	0.0	-179.74	-7.8	367.6	769.8	763.7	6.10	126.257				
2,800.0	2,755.4	2,482.7	2,412.1	9.2	0.0	-179.86	-7.0	400.9	833.3	826.9	6.37	130.842				
2,900.0	2,852.0	2,570.0	2,491.9	9.8	0.0	-179.95	-6.6	436.4	896.2	889.5	6.64	134.929				
3,000.0	2,948.6	2,644.5	2,560.0	10.3	0.0	179.98	-6.1	466.5	958.8	951.9	6.92	138.623				
3,100.0	3,045.2	2,729.7	2,638.0	10.8	0.0	179.88	-5.1	500.9	1,021.4	1,014.2	7.19	142.012				
3,200.0	3,141.8	2,807.1	2,709.0	11.4	0.0	179.80	-4.3	531.6	1,083.4	1,076.0	7.47	145.058				
3,300.0	3,238.4	2,883.2	2,778.7	11.9	0.0	179.78	-4.2	562.2	1,145.9	1,138.2	7.75	147.917				
3,400.0	3,335.0	2,973.6	2,861.7	12.4	0.0	179.72	-3.4	598.1	1,208.0	1,200.0	8.03	150.512				
3,500.0	3,431.6	3,065.3	2,946.2	13.0	0.0	179.66	-2.6	633.5	1,269.1	1,260.8	8.31	152.804				
3,600.0	3,528.2	3,144.2	3,019.2	13.5	0.0	179.59	-1.5	663.7	1,329.9	1,321.3	8.59	154.899				
3,700.0	3,624.8	3,215.8	3,085.2	14.1	0.0	179.57	-1.1	691.3	1,391.0	1,382.1	8.87	156.878				
3,800.0	3,721.5	3,353.5	3,212.9	14.6	0.0	179.59	-1.7	742.6	1,451.2	1,442.1	9.15	158.635				
3,900.0	3,818.1	3,492.1	3,343.9	15.2	0.0	179.60	-2.0	788.0	1,506.9	1,497.5	9.43	159.797				
4,000.0	3,914.7	3,612.8	3,458.9	15.7	0.0	179.57	-1.4	824.7	1,560.9	1,551.2	9.71	160.712				
4,100.0	4,011.3	3,728.7	3,570.0	16.3	0.0	179.55	-0.9	857.6	1,613.2	1,603.2	10.00	161.385				
4,200.0	4,107.9	3,944.6	3,779.6	16.8	0.0	179.56	-1.1	909.2	1,661.8	1,651.5	10.28	161.665				
4,300.0	4,204.5	4,083.2	3,915.9	17.3	0.0	179.56	-0.7	934.1	1,704.4	1,693.9	10.56	161.361				
4,318.3	4,222.2	4,124.6	3,956.8	17.4	0.0	179.55	-0.5	940.9	1,712.0	1,701.4	10.61	161.281				
4,400.0	4,301.6	4,261.2	4,092.1	17.8	0.0	179.53	0.5	959.4	1,741.5	1,730.7	10.84	160.611				
4,500.0	4,399.9	4,446.8	4,276.9	18.1	0.0	179.52	1.2	977.2	1,769.0	1,757.9	11.05	160.038				
4,600.0	4,499.2	4,648.0	4,477.9	18.4	0.0	179.54	0.7	983.8	1,783.4	1,772.2	11.21	159.138				
4,700.0	4,599.0	4,743.0	4,572.9	18.5	0.0	179.58	-0.2	984.9	1,790.4	1,779.1	11.30	158.435				
4,746.0	4,645.0	4,796.5	4,626.4	18.6	0.0	90.37	-0.7	985.7	1,791.7	1,780.4	11.33	158.194				

CC - Min centre to center distance or convergent point, SF - min separation factor, ES - min ellipse separation

Company:	Ursa Operating Company, LLC	Local Co-ordinate Reference:	Well McLin C6
Project:	Rockies Region	TVD Reference:	McLin C6 @ 5741.4ft (Original Well Elev)
Reference Site:	McLin C	MD Reference:	McLin C6 @ 5741.4ft (Original Well Elev)
Site Error:	0.0ft	North Reference:	True
Reference Well:	McLin C6	Survey Calculation Method:	Minimum Curvature
Well Error:	0.0ft	Output errors are at	2.00 sigma
Reference Wellbore	Wellbore #1	Database:	EDM 2003.21 Single User Db
Reference Design:	Design #1	Offset TVD Reference:	Offset Datum

Offset Design													Offset Site Error:	0.0 ft
Survey Program: 990-													Offset Well Error:	0.0 ft
Reference														
Offset														
Semi Major Axis														
Distance														
Measured Depth (ft)	Vertical Depth (ft)	Measured Depth (ft)	Vertical Depth (ft)	Reference (ft)	Offset (ft)	Highside Toolface (°)	Offset Wellbore Centre +N/-S (ft)	+E/-W (ft)	Between Centres (ft)	Between Ellipses (ft)	Minimum Separation (ft)	Separation Factor	Warning	
4,800.0	4,699.0	4,860.0	4,689.9	18.6	0.0	90.39	-1.2	986.1	1,792.1	1,780.7	11.42	156.921		
4,900.0	4,799.0	4,965.6	4,795.5	18.8	0.0	90.41	-1.9	986.6	1,792.6	1,781.0	11.60	154.496		
5,000.0	4,899.0	5,071.9	4,901.7	18.9	0.0	90.38	-1.0	986.4	1,792.4	1,780.6	11.79	152.071		
5,027.9	4,926.9	5,097.1	4,926.9	18.9	0.0	90.37	-0.7	986.4	1,792.3	1,780.5	11.84	151.406		
5,100.0	4,999.0	5,161.0	4,990.9	19.0	0.0	90.35	0.2	986.5	1,792.5	1,780.5	11.97	149.732		
5,200.0	5,099.0	5,256.2	5,086.1	19.1	0.0	90.30	1.5	987.2	1,793.2	1,781.1	12.16	147.495		
5,300.0	5,199.0	5,370.5	5,200.4	19.3	0.0	90.22	4.0	987.7	1,793.6	1,781.3	12.35	145.287		
5,400.0	5,299.0	5,495.1	5,324.8	19.4	0.0	90.15	6.4	986.8	1,792.9	1,780.4	12.53	143.039		
5,500.0	5,399.0	5,601.7	5,431.5	19.5	0.0	90.11	7.6	985.0	1,791.3	1,778.5	12.72	140.772		
5,600.0	5,499.0	5,706.0	5,535.7	19.7	0.0	90.08	8.6	983.0	1,789.3	1,776.4	12.92	138.534		
5,700.0	5,599.0	5,797.1	5,626.9	19.8	0.0	90.05	9.3	981.3	1,787.4	1,774.3	13.11	136.358		
5,800.0	5,699.0	5,877.0	5,706.7	19.9	0.0	90.05	9.4	980.6	1,786.5	1,773.2	13.30	134.308		
5,856.2	5,755.2	5,926.0	5,755.7	20.0	0.0	90.05	9.3	980.5	1,786.4	1,773.0	13.41	133.209		
5,900.0	5,799.0	5,966.9	5,796.6	20.1	0.0	90.05	9.3	980.5	1,786.4	1,772.9	13.50	132.370		
6,000.0	5,899.0	6,077.0	5,906.7	20.2	0.0	90.06	9.1	980.3	1,786.3	1,772.6	13.69	130.471		
6,100.0	5,999.0	6,178.2	6,007.9	20.3	0.0	90.07	8.9	979.9	1,785.8	1,771.9	13.89	128.593		
6,200.0	6,099.0	6,274.3	6,104.0	20.5	0.0	90.07	8.9	979.5	1,785.4	1,771.3	14.08	126.765		
6,256.6	6,155.6	6,325.9	6,155.6	20.6	0.0	90.06	9.1	979.4	1,785.3	1,771.1	14.20	125.760		
6,300.0	6,199.0	6,365.4	6,195.1	20.6	0.0	90.05	9.4	979.4	1,785.4	1,771.1	14.28	125.007		
6,400.0	6,299.0	6,456.6	6,286.3	20.8	0.0	90.03	10.1	979.9	1,785.8	1,771.3	14.48	123.325		
6,500.0	6,399.0	6,549.6	6,379.3	20.9	0.0	90.00	11.1	980.7	1,786.7	1,772.0	14.68	121.710		
6,600.0	6,499.0	6,636.0	6,465.6	21.1	0.0	89.95	12.4	982.0	1,788.2	1,773.3	14.88	120.174		
6,700.0	6,599.0	6,753.2	6,582.9	21.2	0.0	89.89	14.5	983.8	1,789.8	1,774.7	15.08	118.679		
6,800.0	6,699.0	6,874.9	6,704.5	21.4	0.0	89.86	15.3	983.6	1,789.6	1,774.3	15.28	117.099		
6,900.0	6,799.0	6,970.7	6,800.4	21.5	0.0	89.89	14.4	983.5	1,789.5	1,774.0	15.48	115.565		
6,992.0	6,891.0	7,061.4	6,891.0	21.7	0.0	89.98	11.7	983.5	1,789.4	1,773.7	15.67	114.185		
7,000.0	6,899.0	7,069.1	6,898.7	21.7	0.0	89.98	11.5	983.5	1,789.4	1,773.7	15.69	114.067		
7,100.0	6,999.0	7,165.0	6,994.6	21.8	0.0	90.07	8.7	983.6	1,789.6	1,773.7	15.89	112.618		
7,200.0	7,099.0	7,210.0	7,039.5	22.0	0.0	90.11	7.6	983.8	1,790.7	1,774.6	16.09	111.263		
7,300.0	7,199.0	7,210.0	7,039.5	22.1	0.0	90.11	7.6	983.8	1,796.8	1,780.5	16.30	110.242		
7,343.0	7,242.0	7,210.0	7,039.5	22.2	0.0	90.11	7.6	983.8	1,801.1	1,784.8	16.39	109.914		

Company:	Ursa Operating Company, LLC	Local Co-ordinate Reference:	Well McLin C6
Project:	Rockies Region	TVD Reference:	McLin C6 @ 5741.4ft (Original Well Elev)
Reference Site:	McLin C	MD Reference:	McLin C6 @ 5741.4ft (Original Well Elev)
Site Error:	0.0ft	North Reference:	True
Reference Well:	McLin C6	Survey Calculation Method:	Minimum Curvature
Well Error:	0.0ft	Output errors are at	2.00 sigma
Reference Wellbore	Wellbore #1	Database:	EDM 2003.21 Single User Db
Reference Design:	Design #1	Offset TVD Reference:	Offset Datum

Offset Design													Offset Site Error:	0.0 ft
Survey Program: 100-													Offset Well Error:	0.0 ft
Reference													Warning	
Measured Depth (ft)	Vertical Depth (ft)	Measured Depth (ft)	Vertical Depth (ft)	Reference (ft)	Offset (ft)	Highside Toolface (°)	Offset Wellbore Centre +N/-S (ft)	+E/-W (ft)	Between Centres (ft)	Between Ellipses (ft)	Minimum Separation (ft)	Separation Factor		
0.0	0.0	0.0	0.0	0.0	0.0	48.58	36.3	41.1	54.8					
100.0	100.0	99.7	99.7	0.1	0.0	48.68	36.4	41.4	55.1	55.0	0.10	578.547		
200.0	200.0	200.2	200.2	0.3	0.0	48.89	36.3	41.6	55.3	54.9	0.32	172.692		
300.0	300.0	300.0	300.0	0.5	0.0	48.66	36.4	41.4	55.1	54.6	0.54	101.132		
302.0	302.0	302.0	302.0	0.5	0.0	48.64	36.4	41.4	55.1	54.5	0.55	100.320		
400.0	400.0	399.5	399.5	0.8	0.0	48.36	36.9	41.5	55.5	54.8	0.77	72.157		
500.0	500.0	500.2	500.2	1.0	0.0	48.75	36.8	42.0	55.8	54.8	0.99	56.113		
600.0	600.0	600.0	600.0	1.2	0.0	48.84	36.5	41.8	55.5	54.2	1.22	45.493		
604.0	604.0	604.2	604.2	1.2	0.0	48.82	36.5	41.7	55.4	54.2	1.23	45.146 ES		
700.0	700.0	699.5	699.5	1.4	0.0	48.38	37.0	41.7	55.8	54.3	1.44	38.636		
800.0	800.0	799.9	799.9	1.7	0.0	48.54	37.3	42.2	56.3	54.7	1.67	33.760		
900.0	900.0	900.0	900.0	1.9	0.0	48.67	37.1	42.2	56.1	54.3	1.89	29.653		
903.4	903.4	903.7	903.7	1.9	0.0	48.66	37.1	42.1	56.1	54.2	1.90	29.525		
1,000.0	1,000.0	999.6	999.6	2.1	0.0	48.79	37.2	42.5	56.5	54.3	2.12	26.651		
1,100.0	1,100.0	1,099.6	1,099.6	2.3	0.0	48.97	37.4	42.9	56.9	54.6	2.34	24.292		
1,200.0	1,200.0	1,197.8	1,197.8	2.6	0.0	48.66	38.9	44.2	58.9	56.3	2.57	22.924 SF		
1,300.0	1,299.9	1,294.1	1,293.8	2.8	0.0	137.74	44.2	47.4	67.3	64.5	2.78	24.230		
1,400.0	1,399.5	1,388.2	1,387.2	3.0	0.0	139.05	54.1	53.7	86.1	83.1	2.98	28.912		
1,500.0	1,498.3	1,479.7	1,477.4	3.2	0.0	141.41	66.4	63.0	113.9	110.7	3.18	35.810		
1,600.0	1,596.0	1,565.7	1,561.5	3.5	0.0	144.01	79.5	75.4	151.0	147.6	3.40	44.457		
1,627.6	1,622.8	1,588.3	1,583.4	3.6	0.0	144.57	83.5	79.2	162.9	159.5	3.46	47.108		
1,700.0	1,692.7	1,646.2	1,639.1	3.9	0.0	146.21	94.7	89.8	196.4	192.8	3.65	53.852		
1,800.0	1,789.3	1,721.0	1,710.5	4.3	0.0	147.49	111.2	105.4	246.0	242.0	3.92	62.705		
1,900.0	1,885.9	1,800.3	1,785.1	4.7	0.0	148.27	130.4	124.0	298.6	294.4	4.21	70.902		
2,000.0	1,982.5	1,872.5	1,852.2	5.2	0.0	148.68	149.5	142.7	354.1	349.6	4.51	78.456		
2,100.0	2,079.1	1,940.1	1,914.1	5.7	0.0	148.87	168.7	161.8	412.4	407.5	4.83	85.451		
2,200.0	2,175.7	2,004.0	1,971.5	6.1	0.0	148.89	188.6	181.5	473.7	468.5	5.15	92.000		
2,300.0	2,272.3	2,064.3	2,024.8	6.6	0.0	148.82	208.7	201.5	537.6	532.1	5.48	98.097		
2,400.0	2,368.9	2,123.6	2,076.3	7.2	0.0	148.69	229.6	222.1	603.7	597.8	5.82	103.738		
2,500.0	2,465.6	2,180.6	2,125.0	7.7	0.0	148.55	250.4	243.1	671.7	665.6	6.16	108.974		
2,600.0	2,562.2	2,234.7	2,170.6	8.2	0.0	148.41	270.9	263.8	741.6	735.1	6.51	113.845		
2,700.0	2,658.8	2,288.0	2,214.7	8.7	0.0	148.25	292.0	285.1	813.2	806.3	6.87	118.378		
2,800.0	2,755.4	2,342.3	2,258.9	9.2	0.0	148.07	314.1	307.4	886.1	878.9	7.23	122.560		
2,900.0	2,852.0	2,397.4	2,303.5	9.8	0.0	147.88	337.2	330.4	960.0	952.4	7.60	126.390		
3,000.0	2,948.6	2,452.3	2,347.3	10.3	0.0	147.68	360.6	353.6	1,034.7	1,026.7	7.96	129.909		
3,100.0	3,045.2	2,507.3	2,390.9	10.8	0.0	147.49	384.5	377.2	1,110.1	1,101.8	8.34	133.154		
3,200.0	3,141.8	2,562.5	2,434.3	11.4	0.0	147.32	408.6	401.2	1,186.1	1,177.4	8.71	136.159		
3,300.0	3,238.4	2,629.2	2,486.6	11.9	0.0	147.14	437.8	430.5	1,262.4	1,253.3	9.09	138.893		
3,400.0	3,335.0	2,693.2	2,537.0	12.4	0.0	147.00	465.7	458.6	1,338.5	1,329.1	9.47	141.380		
3,500.0	3,431.6	2,750.2	2,581.6	13.0	0.0	146.86	490.9	483.6	1,414.9	1,405.1	9.85	143.686		
3,600.0	3,528.2	2,835.5	2,648.5	13.5	0.0	146.69	528.3	520.8	1,491.2	1,481.0	10.23	145.726		
3,700.0	3,624.8	2,901.8	2,701.1	14.1	0.0	146.60	556.8	549.5	1,566.7	1,556.1	10.61	147.619		
3,800.0	3,721.5	2,960.9	2,747.8	14.6	0.0	146.54	582.1	575.4	1,642.5	1,631.5	10.99	149.414		
3,900.0	3,818.1	3,021.8	2,795.8	15.2	0.0	146.45	608.6	601.9	1,718.5	1,707.1	11.38	151.062		
4,000.0	3,914.7	3,128.8	2,880.4	15.7	0.0	146.27	655.8	647.4	1,794.0	1,782.3	11.77	152.419		
4,100.0	4,011.3	3,303.4	3,022.7	16.3	0.0	146.08	729.0	717.3	1,867.3	1,855.1	12.17	153.468		
4,200.0	4,107.9	3,873.3	3,538.2	16.8	0.0	146.87	897.1	886.5	1,921.4	1,909.0	12.46	154.232		
4,300.0	4,204.5	4,009.3	3,667.9	17.3	0.0	147.10	927.1	914.0	1,970.5	1,957.7	12.81	153.873		
4,318.3	4,222.2	4,050.6	3,707.6	17.4	0.0	147.19	935.5	921.9	1,979.2	1,966.4	12.87	153.842		
4,400.0	4,301.6	4,300.9	3,951.6	17.8	0.0	148.39	974.7	960.5	2,011.2	1,998.2	13.00	154.687		
4,500.0	4,399.9	4,759.7	4,408.1	18.1	0.0	149.86	997.4	986.0	2,029.5	2,016.4	13.08	155.152		
4,600.0	4,499.2	4,883.6	4,532.0	18.4	0.0	150.25	996.6	985.1	2,038.9	2,025.7	13.22	154.209		

CC - Min centre to center distance or convergent point, SF - min separation factor, ES - min ellipse separation

Company:	Ursa Operating Company, LLC	Local Co-ordinate Reference:	Well McLin C6
Project:	Rockies Region	TVD Reference:	McLin C6 @ 5741.4ft (Original Well Elev)
Reference Site:	McLin C	MD Reference:	McLin C6 @ 5741.4ft (Original Well Elev)
Site Error:	0.0ft	North Reference:	True
Reference Well:	McLin C6	Survey Calculation Method:	Minimum Curvature
Well Error:	0.0ft	Output errors are at	2.00 sigma
Reference Wellbore	Wellbore #1	Database:	EDM 2003.21 Single User Db
Reference Design:	Design #1	Offset TVD Reference:	Offset Datum

Offset Design													Offset Site Error:	0.0 ft
Survey Program: 100-													Offset Well Error:	0.0 ft
Reference														
Offset														
Semi Major Axis														
Distance														
Measured Depth (ft)	Vertical Depth (ft)	Measured Depth (ft)	Vertical Depth (ft)	Reference (ft)	Offset (ft)	Highside Toolface (°)	Offset Wellbore Centre +N/-S (ft)	+E/-W (ft)	Between Centres (ft)	Between Ellipses (ft)	Minimum Separation (ft)	Separation Factor	Warning	
4,700.0	4,599.0	4,990.2	4,638.6	18.5	0.0	150.42	994.6	983.8	2,042.0	2,028.7	13.32	153.259		
4,746.0	4,645.0	5,028.0	4,676.4	18.6	0.0	61.22	993.9	983.4	2,041.7	2,028.4	13.36	152.845		
4,800.0	4,699.0	5,081.0	4,729.3	18.6	0.0	61.24	993.0	982.9	2,040.8	2,027.4	13.44	151.889		
4,900.0	4,799.0	5,167.1	4,815.5	18.8	0.0	61.27	991.5	982.5	2,039.7	2,026.1	13.59	150.071		
5,000.0	4,899.0	5,263.3	4,911.7	18.9	0.0	61.31	989.9	982.8	2,039.1	2,025.4	13.75	148.337		
5,100.0	4,999.0	5,373.6	5,022.0	19.0	0.0	61.34	988.4	982.5	2,038.2	2,024.3	13.91	146.579		
5,200.0	5,099.0	5,474.9	5,123.2	19.1	0.0	61.35	987.7	981.5	2,037.0	2,022.9	14.07	144.792		
5,300.0	5,199.0	5,568.0	5,216.3	19.3	0.0	61.36	986.9	980.8	2,036.0	2,021.7	14.23	143.043		
5,400.0	5,299.0	5,658.7	5,307.0	19.4	0.0	61.36	986.6	980.3	2,035.3	2,020.9	14.40	141.339		
5,470.1	5,369.2	5,720.8	5,369.2	19.5	0.0	61.34	987.1	979.9	2,035.2	2,020.7	14.52	140.156		
5,500.0	5,399.0	5,746.8	5,395.1	19.5	0.0	61.33	987.4	979.8	2,035.2	2,020.6	14.57	139.664		
5,600.0	5,499.0	5,837.1	5,485.4	19.7	0.0	61.30	988.5	979.7	2,035.7	2,020.9	14.75	138.055		
5,700.0	5,599.0	5,949.6	5,597.9	19.8	0.0	61.27	989.6	979.7	2,036.3	2,021.3	14.92	136.476		
5,800.0	5,699.0	6,036.4	5,684.7	19.9	0.0	61.24	990.7	979.3	2,036.4	2,021.4	15.10	134.895		
5,900.0	5,799.0	6,146.6	5,794.9	20.1	0.0	61.21	992.0	979.5	2,037.2	2,021.9	15.27	133.376		
6,000.0	5,899.0	6,242.5	5,890.8	20.2	0.0	61.19	992.7	979.4	2,037.4	2,022.0	15.45	131.855		
6,100.0	5,999.0	6,348.9	5,997.2	20.3	0.0	61.18	993.3	979.4	2,037.7	2,022.1	15.63	130.370		
6,200.0	6,099.0	6,465.8	6,114.1	20.5	0.0	61.15	994.0	978.5	2,037.3	2,021.5	15.81	128.850		
6,300.0	6,199.0	6,563.0	6,211.2	20.6	0.0	61.13	994.4	977.5	2,036.6	2,020.6	15.99	127.346		
6,400.0	6,299.0	6,658.5	6,306.7	20.8	0.0	61.12	994.5	976.9	2,036.1	2,019.9	16.17	125.883		
6,500.0	6,399.0	6,751.1	6,399.4	20.9	0.0	61.10	995.0	976.5	2,036.0	2,019.6	16.36	124.466		
6,600.0	6,499.0	6,855.8	6,504.0	21.1	0.0	61.09	995.3	976.1	2,035.8	2,019.3	16.54	123.075		
6,672.8	6,571.8	6,918.0	6,566.3	21.2	0.0	61.08	995.3	975.9	2,035.6	2,019.0	16.68	122.076		
6,700.0	6,599.0	6,942.4	6,590.7	21.2	0.0	61.08	995.3	975.9	2,035.7	2,018.9	16.73	121.711		
6,800.0	6,699.0	7,012.0	6,660.3	21.4	0.0	61.07	996.1	976.7	2,037.1	2,020.2	16.91	120.461		
6,900.0	6,799.0	7,104.3	6,752.5	21.5	0.0	61.04	998.3	978.1	2,039.5	2,022.4	17.10	119.275		
7,000.0	6,899.0	7,269.4	6,917.6	21.7	0.0	60.99	999.5	976.9	2,038.6	2,021.3	17.29	117.904		
7,100.0	6,999.0	7,353.5	7,001.7	21.8	0.0	60.99	999.5	976.4	2,038.1	2,020.6	17.48	116.608		
7,152.3	7,051.3	7,404.3	7,052.5	21.9	0.0	60.98	999.5	976.3	2,038.1	2,020.5	17.58	115.953		
7,200.0	7,099.0	7,412.0	7,060.2	22.0	0.0	60.98	999.5	976.3	2,038.4	2,020.8	17.67	115.384		
7,300.0	7,199.0	7,412.0	7,060.2	22.1	0.0	60.98	999.5	976.3	2,042.8	2,024.9	17.86	114.407		
7,343.0	7,242.0	7,412.0	7,060.2	22.2	0.0	60.98	999.5	976.3	2,046.1	2,028.2	17.94	114.075		

Company:	Ursa Operating Company, LLC	Local Co-ordinate Reference:	Well McLin C6
Project:	Rockies Region	TVD Reference:	McLin C6 @ 5741.4ft (Original Well Elev)
Reference Site:	McLin C	MD Reference:	McLin C6 @ 5741.4ft (Original Well Elev)
Site Error:	0.0ft	North Reference:	True
Reference Well:	McLin C6	Survey Calculation Method:	Minimum Curvature
Well Error:	0.0ft	Output errors are at	2.00 sigma
Reference Wellbore	Wellbore #1	Database:	EDM 2003.21 Single User Db
Reference Design:	Design #1	Offset TVD Reference:	Offset Datum

Offset Design													Offset Site Error:	0.0 ft
Survey Program: 984-													Offset Well Error:	0.0 ft
Reference														
Offset														
Semi Major Axis														
Distance														
Measured Depth (ft)	Vertical Depth (ft)	Measured Depth (ft)	Vertical Depth (ft)	Reference (ft)	Offset (ft)	Highside Toolface (°)	Offset Wellbore Centre +N/-S (ft)	+E/-W (ft)	Between Centres (ft)	Between Ellipses (ft)	Minimum Separation (ft)	Separation Factor	Warning	
0.0	0.0	0.0	0.0	0.0	0.0	66.40	13.4	30.7	33.5					
100.0	100.0	100.0	100.0	0.1	0.0	66.41	13.4	30.7	33.5	33.4	0.10	352.706		
200.0	200.0	200.0	200.0	0.3	0.0	66.43	13.4	30.7	33.5	33.2	0.32	104.811		
300.0	300.0	300.0	300.0	0.5	0.0	66.48	13.4	30.7	33.5	33.0	0.54	61.512		
400.0	400.0	400.0	400.0	0.8	0.0	66.54	13.3	30.7	33.5	32.7	0.77	43.500		
500.0	500.0	500.0	500.0	1.0	0.0	66.63	13.3	30.7	33.4	32.4	0.99	33.623		
600.0	600.0	600.0	600.0	1.2	0.0	66.73	13.2	30.7	33.4	32.2	1.22	27.381		
700.0	700.0	700.0	700.0	1.4	0.0	66.85	13.1	30.6	33.3	31.9	1.44	23.077		
800.0	800.0	800.0	800.0	1.7	0.0	66.99	13.0	30.6	33.2	31.6	1.67	19.927		
900.0	900.0	900.0	900.0	1.9	0.0	67.15	12.9	30.6	33.2	31.3	1.89	17.520		
1,000.0	1,000.0	1,000.0	1,000.0	2.1	0.0	67.32	12.8	30.5	33.1	31.0	2.12	15.621		
1,050.4	1,050.4	1,050.4	1,050.4	2.2	0.0	67.42	12.7	30.5	33.1	30.8	2.23	14.822 CC		
1,100.0	1,100.0	1,099.8	1,099.8	2.3	0.0	67.51	12.7	30.6	33.2	30.8	2.34	14.150 ES		
1,200.0	1,200.0	1,198.5	1,198.5	2.6	0.0	67.22	13.7	32.7	35.5	32.9	2.57	13.812 SF		
1,300.0	1,299.9	1,296.2	1,296.0	2.8	0.0	157.20	16.7	38.4	44.8	42.1	2.78	16.152		
1,400.0	1,399.5	1,392.2	1,391.3	3.0	0.0	158.60	22.0	47.5	64.1	61.1	2.97	21.589		
1,500.0	1,498.3	1,485.0	1,483.1	3.2	0.0	159.82	29.3	59.2	92.6	89.4	3.16	29.327		
1,600.0	1,596.0	1,574.8	1,571.3	3.5	0.0	161.04	37.7	74.1	130.5	127.2	3.35	38.980		
1,627.6	1,622.8	1,595.5	1,591.5	3.6	0.0	161.28	39.8	78.1	142.6	139.2	3.40	41.931		
1,700.0	1,692.7	1,653.9	1,648.2	3.9	0.0	162.11	46.2	90.5	176.5	173.0	3.57	49.422		
1,800.0	1,789.3	1,731.2	1,722.4	4.3	0.0	162.64	56.2	109.7	226.9	223.1	3.82	59.435		
1,900.0	1,885.9	1,805.1	1,792.3	4.7	0.0	162.78	67.3	130.8	280.9	276.9	4.07	68.961		
2,000.0	1,982.5	1,870.1	1,853.0	5.2	0.0	162.75	78.1	151.4	338.2	333.9	4.34	77.945		
2,100.0	2,079.1	1,942.4	1,919.6	5.7	0.0	162.64	91.2	176.5	398.4	393.7	4.61	86.361		
2,200.0	2,175.7	2,011.9	1,982.6	6.1	0.0	162.52	104.6	202.6	460.9	456.0	4.89	94.214		
2,300.0	2,272.3	2,085.1	2,048.5	6.6	0.0	162.36	119.2	230.7	524.5	519.3	5.18	101.289		
2,400.0	2,368.9	2,161.6	2,117.3	7.2	0.0	162.18	135.0	260.3	588.3	582.8	5.47	107.570		
2,500.0	2,465.6	2,234.3	2,182.5	7.7	0.0	162.01	150.3	288.5	652.4	646.7	5.76	113.181		
2,600.0	2,562.2	2,307.1	2,247.6	8.2	0.0	161.87	165.7	317.1	717.0	710.9	6.06	118.262		
2,700.0	2,658.8	2,380.5	2,313.3	8.7	0.0	161.81	180.7	346.5	781.9	775.6	6.36	122.900		
2,800.0	2,755.4	2,455.3	2,380.0	9.2	0.0	161.77	195.9	376.6	847.0	840.3	6.66	127.106		
2,900.0	2,852.0	2,531.5	2,448.0	9.8	0.0	161.74	211.4	407.3	912.1	905.2	6.97	130.921		
3,000.0	2,948.6	2,611.5	2,519.5	10.3	0.0	161.75	227.1	439.5	977.1	969.9	7.27	134.396		
3,100.0	3,045.2	2,692.6	2,592.2	10.8	0.0	161.78	242.6	471.9	1,041.7	1,034.1	7.57	137.532		
3,200.0	3,141.8	2,770.9	2,662.5	11.4	0.0	161.77	258.1	502.9	1,106.1	1,098.2	7.88	140.340		
3,300.0	3,238.4	2,845.0	2,729.0	11.9	0.0	161.81	272.0	532.4	1,170.4	1,162.3	8.19	142.963		
3,400.0	3,335.0	2,932.1	2,807.2	12.4	0.0	161.83	288.7	566.8	1,234.6	1,226.1	8.49	145.341		
3,500.0	3,431.6	3,024.6	2,890.5	13.0	0.0	161.67	309.1	601.5	1,298.0	1,289.2	8.81	147.283		
3,600.0	3,528.2	3,102.2	2,960.6	13.5	0.0	161.53	326.5	630.0	1,360.8	1,351.6	9.13	149.008		
3,700.0	3,624.8	3,170.5	3,022.2	14.1	0.0	161.45	341.3	655.5	1,423.9	1,414.4	9.45	150.684		
3,800.0	3,721.5	3,233.3	3,078.6	14.6	0.0	161.38	355.1	679.5	1,487.7	1,477.9	9.77	152.311		
3,900.0	3,818.1	3,301.2	3,139.2	15.2	0.0	161.30	370.2	705.8	1,552.1	1,542.0	10.09	153.879		
4,000.0	3,914.7	3,376.7	3,206.8	15.7	0.0	161.26	386.4	735.6	1,616.8	1,606.4	10.40	155.395		
4,100.0	4,011.3	3,470.9	3,291.2	16.3	0.0	161.24	405.7	772.5	1,681.1	1,670.4	10.72	156.807		
4,200.0	4,107.9	3,568.9	3,472.0	16.8	0.0	161.43	439.5	845.6	1,743.4	1,732.4	11.02	158.178		
4,300.0	4,204.5	4,283.6	4,070.0	17.3	0.0	162.72	488.6	966.7	1,783.0	1,771.8	11.23	158.736		
4,318.3	4,222.2	4,344.0	4,130.2	17.4	0.0	162.89	489.4	970.4	1,788.6	1,777.4	11.28	158.610		
4,400.0	4,301.6	4,481.7	4,267.9	17.8	0.0	163.43	490.1	974.6	1,809.2	1,797.7	11.48	157.610		
4,500.0	4,399.9	4,579.4	4,365.6	18.1	0.0	163.79	490.2	976.3	1,828.1	1,816.4	11.68	156.551		
4,600.0	4,499.2	4,693.3	4,479.4	18.4	0.0	164.04	490.7	978.3	1,841.4	1,829.6	11.82	155.732		
4,700.0	4,599.0	4,798.0	4,584.1	18.5	0.0	164.16	490.7	979.1	1,847.8	1,835.9	11.92	155.004		
4,746.0	4,645.0	4,847.7	4,633.8	18.6	0.0	74.96	490.6	979.5	1,848.8	1,836.8	11.95	154.724		

CC - Min centre to center distance or convergent point, SF - min separation factor, ES - min ellipse separation

Company:	Ursa Operating Company, LLC	Local Co-ordinate Reference:	Well McLin C6
Project:	Rockies Region	TVD Reference:	McLin C6 @ 5741.4ft (Original Well Elev)
Reference Site:	McLin C	MD Reference:	McLin C6 @ 5741.4ft (Original Well Elev)
Site Error:	0.0ft	North Reference:	True
Reference Well:	McLin C6	Survey Calculation Method:	Minimum Curvature
Well Error:	0.0ft	Output errors are at	2.00 sigma
Reference Wellbore	Wellbore #1	Database:	EDM 2003.21 Single User Db
Reference Design:	Design #1	Offset TVD Reference:	Offset Datum

Offset Design													Offset Site Error:	0.0 ft
Survey Program: 984- McLin C - MCLIN C24 - Wellbore #1 - Actual													Offset Well Error:	0.0 ft
Reference		Offset		Semi Major Axis			Distance							Warning
Measured Depth (ft)	Vertical Depth (ft)	Measured Depth (ft)	Vertical Depth (ft)	Reference (ft)	Offset (ft)	Highside Toolface (°)	Offset Wellbore Centre +N/-S (ft)	+E/-W (ft)	Between Centres (ft)	Between Ellipses (ft)	Minimum Separation (ft)	Separation Factor		
4,800.0	4,699.0	4,916.4	4,702.6	18.6	0.0	74.96	490.8	979.6	1,848.9	1,836.8	12.04	153.579		
4,900.0	4,799.0	5,019.7	4,805.8	18.8	0.0	74.94	491.2	979.1	1,848.5	1,836.3	12.21	151.341		
4,952.8	4,851.9	5,065.7	4,851.9	18.8	0.0	74.94	491.1	979.0	1,848.4	1,836.1	12.31	150.187		
5,000.0	4,899.0	5,104.7	4,890.8	18.9	0.0	74.94	491.1	979.1	1,848.5	1,836.1	12.39	149.191		
5,100.0	4,999.0	5,212.4	4,998.6	19.0	0.0	74.95	491.1	979.5	1,848.8	1,836.3	12.57	147.114		
5,200.0	5,099.0	5,302.1	5,088.2	19.1	0.0	74.94	491.3	979.7	1,849.1	1,836.4	12.75	145.065		
5,300.0	5,199.0	5,417.6	5,203.7	19.3	0.0	74.96	490.9	980.1	1,849.4	1,836.4	12.93	143.073		
5,400.0	5,299.0	5,521.7	5,307.8	19.4	0.0	75.00	489.7	980.0	1,849.0	1,835.9	13.11	141.087		
5,500.0	5,399.0	5,620.7	5,406.8	19.5	0.0	75.03	488.5	979.8	1,848.5	1,835.2	13.29	139.132		
5,569.8	5,468.8	5,682.7	5,468.8	19.6	0.0	75.05	487.7	979.9	1,848.4	1,834.9	13.41	137.803		
5,600.0	5,499.0	5,709.9	5,496.0	19.7	0.0	75.06	487.5	980.0	1,848.4	1,834.9	13.47	137.240		
5,700.0	5,599.0	5,825.6	5,611.7	19.8	0.0	75.08	486.8	979.8	1,848.1	1,834.4	13.65	135.362		
5,800.0	5,699.0	5,925.4	5,711.5	19.9	0.0	75.04	487.9	978.7	1,847.3	1,833.5	13.84	133.453		
5,900.0	5,799.0	6,013.7	5,799.7	20.1	0.0	75.00	489.1	978.1	1,847.0	1,832.9	14.03	131.613		
5,904.5	5,803.6	6,017.5	5,803.6	20.1	0.0	75.00	489.1	978.1	1,846.9	1,832.9	14.04	131.531		
6,000.0	5,899.0	6,102.4	5,888.4	20.2	0.0	74.98	489.7	978.3	1,847.3	1,833.1	14.22	129.880		
6,100.0	5,999.0	6,186.8	5,972.8	20.3	0.0	74.98	489.8	979.2	1,848.4	1,834.0	14.41	128.247		
6,200.0	6,099.0	6,301.4	6,087.4	20.5	0.0	75.01	489.5	980.6	1,849.6	1,835.0	14.60	126.659		
6,300.0	6,199.0	6,416.7	6,202.8	20.6	0.0	75.00	489.8	980.8	1,849.8	1,835.0	14.80	125.023		
6,400.0	6,299.0	6,521.1	6,307.1	20.8	0.0	74.94	491.4	979.9	1,849.4	1,834.4	14.99	123.359		
6,500.0	6,399.0	6,615.4	6,401.4	20.9	0.0	74.88	493.4	979.1	1,849.1	1,833.9	15.19	121.732		
6,530.2	6,429.2	6,643.2	6,429.2	21.0	0.0	74.86	493.9	979.0	1,849.1	1,833.8	15.25	121.254		
6,600.0	6,499.0	6,708.1	6,494.1	21.1	0.0	74.83	494.9	978.8	1,849.2	1,833.8	15.39	120.175		
6,700.0	6,599.0	6,804.4	6,590.4	21.2	0.0	74.80	496.0	978.9	1,849.5	1,833.9	15.58	118.677		
6,800.0	6,699.0	6,902.2	6,688.1	21.4	0.0	74.77	496.9	979.1	1,850.0	1,834.3	15.78	117.223		
6,900.0	6,799.0	6,999.3	6,785.3	21.5	0.0	74.74	498.2	979.5	1,850.7	1,834.7	15.98	115.805		
7,000.0	6,899.0	7,095.8	6,881.8	21.7	0.0	74.70	499.5	979.9	1,851.6	1,835.4	16.18	114.429		
7,100.0	6,999.0	7,194.5	6,980.4	21.8	0.0	74.66	501.0	980.5	1,852.5	1,836.1	16.38	113.086		
7,200.0	7,099.0	7,288.4	7,074.3	22.0	0.0	74.61	502.8	981.2	1,853.7	1,837.1	16.58	111.780		
7,300.0	7,199.0	7,329.0	7,114.9	22.1	0.0	74.59	503.7	981.5	1,856.0	1,839.2	16.78	110.578		
7,343.0	7,242.0	7,329.0	7,114.9	22.2	0.0	74.59	503.7	981.5	1,858.4	1,841.5	16.87	110.160		

Company:	Ursa Operating Company, LLC	Local Co-ordinate Reference:	Well McLin C6
Project:	Rockies Region	TVD Reference:	McLin C6 @ 5741.4ft (Original Well Elev)
Reference Site:	McLin C	MD Reference:	McLin C6 @ 5741.4ft (Original Well Elev)
Site Error:	0.0ft	North Reference:	True
Reference Well:	McLin C6	Survey Calculation Method:	Minimum Curvature
Well Error:	0.0ft	Output errors are at	2.00 sigma
Reference Wellbore	Wellbore #1	Database:	EDM 2003.21 Single User Db
Reference Design:	Design #1	Offset TVD Reference:	Offset Datum

Offset Design													Offset Site Error:	0.0 ft
Survey Program: 100-													Offset Well Error:	0.0 ft
Reference														
Offset														
Semi Major Axis														
Distance														
Measured Depth (ft)	Vertical Depth (ft)	Measured Depth (ft)	Vertical Depth (ft)	Reference (ft)	Offset (ft)	Highside Toolface (°)	Offset Wellbore Centre +N/-S (ft)	+E/-W (ft)	Between Centres (ft)	Between Ellipses (ft)	Minimum Separation (ft)	Separation Factor	Warning	
0.0	0.0	0.0	0.0	0.0	0.0	85.37	2.1	25.5	25.6					
100.0	100.0	99.8	99.8	0.1	0.0	85.30	2.1	26.0	26.1	26.0	0.10	273.649		
200.0	200.0	200.0	200.0	0.3	0.0	84.82	2.4	26.3	26.5	26.1	0.32	82.647		
300.0	300.0	299.8	299.8	0.5	0.0	84.49	2.6	26.5	26.7	26.1	0.54	48.953		
400.0	400.0	400.0	400.0	0.8	0.0	84.13	2.8	26.8	27.0	26.2	0.77	35.061		
500.0	500.0	499.9	499.9	1.0	0.0	84.04	2.8	27.1	27.2	26.2	0.99	27.394		
600.0	600.0	600.0	600.0	1.2	0.0	84.04	2.8	27.3	27.4	26.2	1.22	22.480		
700.0	700.0	699.9	699.9	1.4	0.0	83.80	3.0	27.4	27.5	26.1	1.44	19.059		
800.0	800.0	800.0	800.0	1.7	0.0	83.62	3.1	27.5	27.7	26.0	1.67	16.580		
900.0	900.0	899.9	899.9	1.9	0.0	83.48	3.2	27.7	27.8	25.9	1.89	14.700		
1,000.0	1,000.0	999.8	999.8	2.1	0.0	83.78	3.1	28.2	28.4	26.3	2.12	13.402		
1,100.0	1,100.0	1,099.9	1,099.9	2.3	0.0	84.04	3.0	28.8	28.9	26.6	2.34	12.351		
1,200.0	1,200.0	1,199.3	1,199.3	2.6	0.0	83.99	3.1	29.6	29.8	27.2	2.57	11.602 SF		
1,300.0	1,299.9	1,297.5	1,297.4	2.8	0.0	172.38	4.4	33.9	37.3	34.5	2.78	13.427		
1,400.0	1,399.5	1,393.6	1,393.0	3.0	0.0	171.92	7.0	42.7	55.7	52.7	2.96	18.785		
1,500.0	1,498.3	1,486.3	1,484.8	3.2	0.0	172.22	10.0	55.3	84.3	81.2	3.15	26.776		
1,600.0	1,596.0	1,574.4	1,571.4	3.5	0.0	172.40	13.7	70.9	122.7	119.4	3.33	36.844		
1,627.6	1,622.8	1,597.9	1,594.4	3.6	0.0	172.39	14.9	75.6	135.0	131.6	3.38	39.910		
1,700.0	1,692.7	1,657.4	1,652.4	3.9	0.0	172.36	18.5	88.7	168.7	165.2	3.55	47.577		
1,800.0	1,789.3	1,735.9	1,728.1	4.3	0.0	172.04	24.4	108.5	218.5	214.8	3.78	57.786		
1,900.0	1,885.9	1,815.0	1,803.4	4.7	0.0	171.77	31.1	131.7	272.0	268.0	4.03	67.562		
2,000.0	1,982.5	1,880.7	1,865.2	5.2	0.0	171.61	36.8	153.4	328.8	324.5	4.28	76.866		
2,100.0	2,079.1	1,951.3	1,930.6	5.7	0.0	171.45	43.5	179.1	388.5	383.9	4.53	85.679		
2,200.0	2,175.7	2,022.7	1,996.1	6.1	0.0	171.27	50.7	206.3	449.8	445.0	4.80	93.790		
2,300.0	2,272.3	2,093.1	2,060.4	6.6	0.0	171.11	58.2	234.2	512.5	507.4	5.06	101.233		
2,400.0	2,368.9	2,169.8	2,130.1	7.2	0.0	170.98	66.2	265.2	575.8	570.5	5.33	107.989		
2,500.0	2,465.6	2,245.5	2,198.8	7.7	0.0	170.86	74.4	295.8	639.3	633.7	5.61	114.045		
2,600.0	2,562.2	2,325.4	2,271.2	8.2	0.0	170.67	83.8	328.2	702.9	697.0	5.88	119.487		
2,700.0	2,658.8	2,410.0	2,348.3	8.7	0.0	170.52	93.4	361.8	765.7	759.5	6.16	124.270		
2,800.0	2,755.4	2,490.0	2,421.3	9.2	0.0	170.47	101.8	393.3	828.1	821.7	6.44	128.569		
2,900.0	2,852.0	2,570.0	2,494.5	9.8	0.0	170.48	109.6	424.6	890.4	883.6	6.72	132.459		
3,000.0	2,948.6	2,643.8	2,562.1	10.3	0.0	170.54	115.9	453.8	952.7	945.7	7.00	136.049		
3,100.0	3,045.2	2,718.9	2,630.6	10.8	0.0	170.65	121.8	483.9	1,015.4	1,008.1	7.28	139.415		
3,200.0	3,141.8	2,789.6	2,695.0	11.4	0.0	170.72	127.6	512.3	1,078.3	1,070.8	7.57	142.529		
3,300.0	3,238.4	2,854.0	2,753.4	11.9	0.0	170.75	133.5	538.8	1,142.1	1,134.3	7.85	145.491		
3,400.0	3,335.0	2,934.3	2,826.1	12.4	0.0	170.74	141.5	572.1	1,206.3	1,198.1	8.14	148.253		
3,500.0	3,431.6	3,030.6	2,913.5	13.0	0.0	170.71	151.2	611.2	1,269.7	1,261.3	8.42	150.725		
3,600.0	3,528.2	3,108.9	2,985.0	13.5	0.0	170.71	158.8	642.3	1,332.4	1,323.7	8.71	152.942		
3,700.0	3,624.8	3,192.3	3,061.1	14.1	0.0	170.67	167.5	675.4	1,395.1	1,386.1	9.00	154.988		
3,800.0	3,721.5	3,274.5	3,136.3	14.6	0.0	170.65	175.8	707.6	1,457.3	1,448.0	9.29	156.853		
3,900.0	3,818.1	3,359.6	3,214.2	15.2	0.0	170.66	183.7	741.0	1,519.5	1,509.9	9.58	158.613		
4,000.0	3,914.7	3,485.8	3,330.3	15.7	0.0	170.57	197.3	788.2	1,580.5	1,570.6	9.87	160.079		
4,100.0	4,011.3	3,616.5	3,452.3	16.3	0.0	170.46	211.8	833.0	1,638.6	1,628.4	10.17	161.150		
4,200.0	4,107.9	3,805.9	3,632.0	16.8	0.0	170.49	227.4	890.4	1,693.1	1,682.7	10.46	161.896		
4,300.0	4,204.5	4,134.3	3,952.4	17.3	0.0	170.93	239.1	959.7	1,739.0	1,728.3	10.73	162.059		
4,318.3	4,222.2	4,166.5	3,984.3	17.4	0.0	170.97	239.9	964.2	1,746.1	1,735.4	10.78	161.943		
4,400.0	4,301.6	4,494.2	4,311.1	17.8	0.0	171.41	245.4	983.7	1,768.9	1,757.9	11.00	160.845		
4,500.0	4,399.9	4,589.3	4,406.2	18.1	0.0	171.57	245.6	983.1	1,786.1	1,774.9	11.21	159.369		
4,600.0	4,499.2	4,678.4	4,495.3	18.4	0.0	171.67	246.0	983.1	1,797.9	1,786.6	11.36	158.251		
4,700.0	4,599.0	4,784.6	4,601.5	18.5	0.0	171.74	245.8	983.3	1,803.9	1,792.5	11.46	157.447		
4,746.0	4,645.0	4,837.0	4,653.9	18.6	0.0	82.53	245.7	983.1	1,804.4	1,792.9	11.48	157.120		
4,800.0	4,699.0	4,888.8	4,705.7	18.6	0.0	82.53	245.5	982.9	1,804.1	1,792.5	11.58	155.838		

CC - Min centre to center distance or convergent point, SF - min separation factor, ES - min ellipse separation

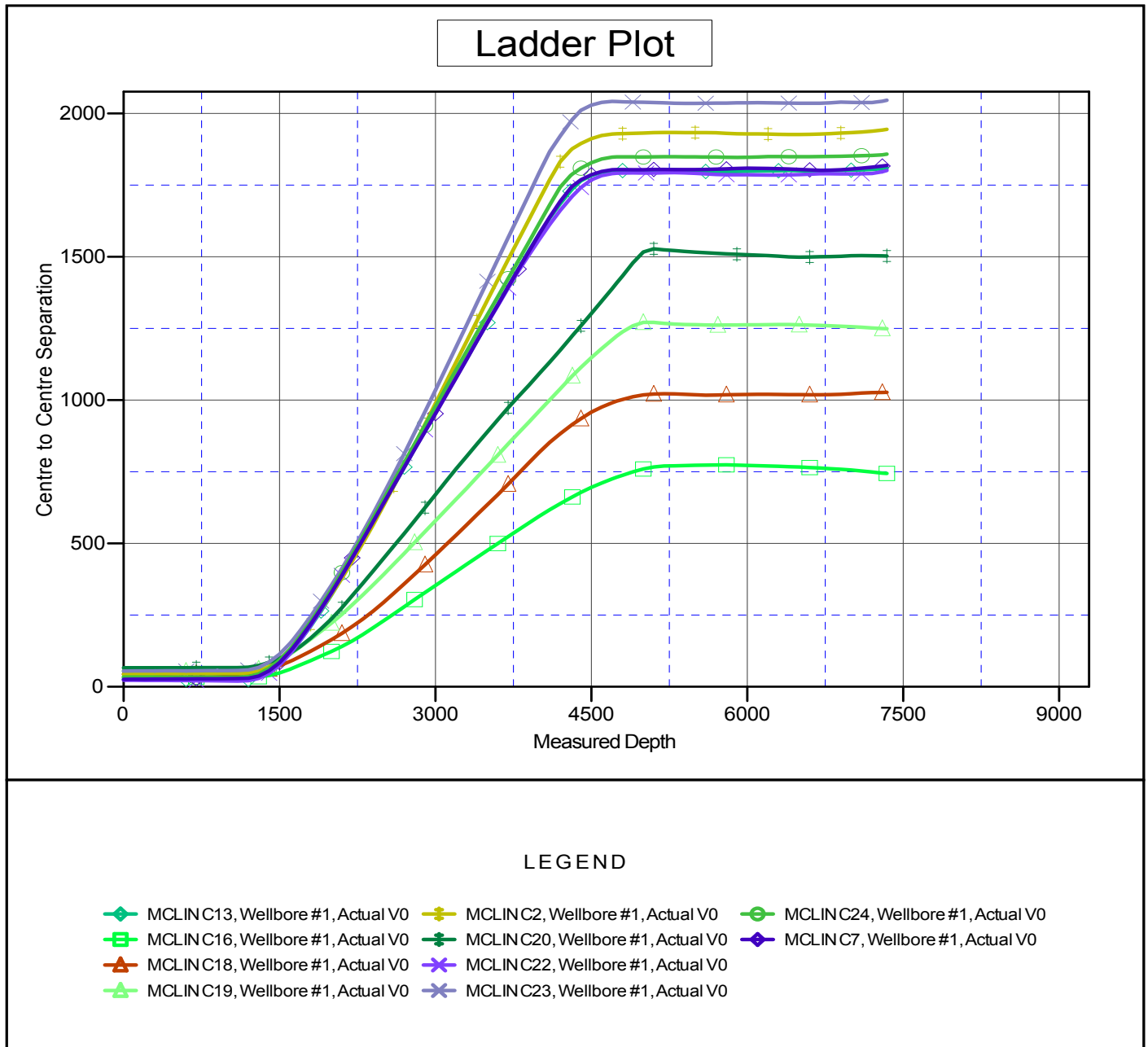
Company:	Ursa Operating Company, LLC	Local Co-ordinate Reference:	Well McLin C6
Project:	Rockies Region	TVD Reference:	McLin C6 @ 5741.4ft (Original Well Elev)
Reference Site:	McLin C	MD Reference:	McLin C6 @ 5741.4ft (Original Well Elev)
Site Error:	0.0ft	North Reference:	True
Reference Well:	McLin C6	Survey Calculation Method:	Minimum Curvature
Well Error:	0.0ft	Output errors are at	2.00 sigma
Reference Wellbore	Wellbore #1	Database:	EDM 2003.21 Single User Db
Reference Design:	Design #1	Offset TVD Reference:	Offset Datum

Offset Design													Offset Site Error:	0.0 ft
Survey Program: 100-													Offset Well Error:	0.0 ft
McLin C - MCLIN C7 - Wellbore #1 - Actual														
Reference		Offset		Semi Major Axis			Distance							Warning
Measured Depth (ft)	Vertical Depth (ft)	Measured Depth (ft)	Vertical Depth (ft)	Reference (ft)	Offset (ft)	Highside Toolface (°)	Offset Wellbore Centre +N/-S (ft)	+E/-W (ft)	Between Centres (ft)	Between Ellipses (ft)	Minimum Separation (ft)	Separation Factor		
4,900.0	4,799.0	4,984.0	4,800.9	18.8	0.0	82.55	245.0	982.8	1,803.9	1,792.2	11.76	153.442		
4,954.2	4,853.2	5,036.3	4,853.2	18.8	0.0	82.55	244.9	982.7	1,803.9	1,792.0	11.85	152.163		
5,000.0	4,899.0	5,073.8	4,890.7	18.9	0.0	82.55	244.9	982.8	1,804.0	1,792.0	11.94	151.110		
5,100.0	4,999.0	5,168.7	4,985.6	19.0	0.0	82.54	245.2	983.6	1,804.8	1,792.7	12.12	148.889		
5,200.0	5,099.0	5,296.4	5,113.3	19.1	0.0	82.57	244.4	983.8	1,804.9	1,792.6	12.31	146.678		
5,300.0	5,199.0	5,385.0	5,201.9	19.3	0.0	82.61	243.0	983.4	1,804.3	1,791.8	12.49	144.465		
5,400.0	5,299.0	5,489.8	5,306.7	19.4	0.0	82.65	241.7	983.4	1,804.2	1,791.5	12.68	142.336		
5,453.3	5,352.3	5,535.4	5,352.3	19.5	0.0	82.67	241.3	983.4	1,804.0	1,791.3	12.78	141.211		
5,500.0	5,399.0	5,573.2	5,390.1	19.5	0.0	82.67	241.2	983.5	1,804.1	1,791.3	12.86	140.254		
5,600.0	5,499.0	5,666.6	5,483.4	19.7	0.0	82.66	241.7	984.1	1,804.9	1,791.9	13.05	138.270		
5,700.0	5,599.0	5,772.8	5,589.6	19.8	0.0	82.64	242.3	984.8	1,805.7	1,792.4	13.24	136.328		
5,800.0	5,699.0	5,858.6	5,675.5	19.9	0.0	82.63	242.6	985.5	1,806.5	1,793.1	13.44	134.443		
5,900.0	5,799.0	5,953.0	5,769.9	20.1	0.0	82.61	243.4	986.9	1,808.0	1,794.4	13.63	132.646		
6,000.0	5,899.0	6,076.5	5,893.3	20.2	0.0	82.57	245.0	988.0	1,809.1	1,795.3	13.83	130.850		
6,100.0	5,999.0	6,191.8	6,008.6	20.3	0.0	82.57	245.0	987.8	1,808.9	1,794.9	14.02	129.019		
6,200.0	6,099.0	6,295.8	6,112.7	20.5	0.0	82.59	244.2	987.2	1,808.3	1,794.1	14.22	127.206		
6,300.0	6,199.0	6,402.7	6,219.5	20.6	0.0	82.62	243.2	986.4	1,807.4	1,793.0	14.41	125.419		
6,400.0	6,299.0	6,506.9	6,323.7	20.8	0.0	82.63	242.6	985.1	1,806.1	1,791.5	14.61	123.639		
6,500.0	6,399.0	6,608.0	6,424.8	20.9	0.0	82.66	241.4	983.8	1,804.7	1,789.9	14.80	121.900		
6,600.0	6,499.0	6,714.9	6,531.6	21.1	0.0	82.70	239.9	982.3	1,803.1	1,788.1	15.00	120.190		
6,700.0	6,599.0	6,789.4	6,606.1	21.2	0.0	82.73	239.1	981.5	1,801.9	1,786.7	15.20	118.538		
6,723.1	6,622.1	6,805.4	6,622.1	21.3	0.0	82.73	239.1	981.4	1,801.8	1,786.6	15.25	118.176		
6,800.0	6,699.0	6,862.7	6,679.5	21.4	0.0	82.71	239.6	981.7	1,802.3	1,786.9	15.40	117.019		
6,900.0	6,799.0	6,944.7	6,761.4	21.5	0.0	82.65	241.6	982.8	1,804.0	1,788.4	15.60	115.606		
7,000.0	6,899.0	7,036.6	6,853.3	21.7	0.0	82.59	244.0	984.6	1,806.2	1,790.4	15.81	114.260		
7,100.0	6,999.0	7,123.9	6,940.5	21.8	0.0	82.51	246.7	986.8	1,809.1	1,793.1	16.01	112.981		
7,200.0	7,099.0	7,213.5	7,030.0	22.0	0.0	82.44	249.2	989.7	1,812.6	1,796.4	16.22	111.771		
7,300.0	7,199.0	7,306.7	7,123.2	22.1	0.0	82.38	251.6	993.2	1,816.7	1,800.3	16.42	110.622		
7,343.0	7,242.0	7,308.0	7,124.4	22.2	0.0	82.38	251.6	993.2	1,819.0	1,802.5	16.51	110.173		

Company:	Ursa Operating Company, LLC	Local Co-ordinate Reference:	Well McLin C6
Project:	Rockies Region	TVD Reference:	McLin C6 @ 5741.4ft (Original Well Elev)
Reference Site:	McLin C	MD Reference:	McLin C6 @ 5741.4ft (Original Well Elev)
Site Error:	0.0ft	North Reference:	True
Reference Well:	McLin C6	Survey Calculation Method:	Minimum Curvature
Well Error:	0.0ft	Output errors are at	2.00 sigma
Reference Wellbore	Wellbore #1	Database:	EDM 2003.21 Single User Db
Reference Design:	Design #1	Offset TVD Reference:	Offset Datum

Reference Depths are relative to McLin C6 @ 5741.4ft (Original Well Elev)
Offset Depths are relative to Offset Datum
Central Meridian is 105° 30' 0.000 W °

Coordinates are relative to: McLin C6
Coordinate System is US State Plane 1983, Colorado Central Zone
Grid Convergence at Surface is: -1.33°

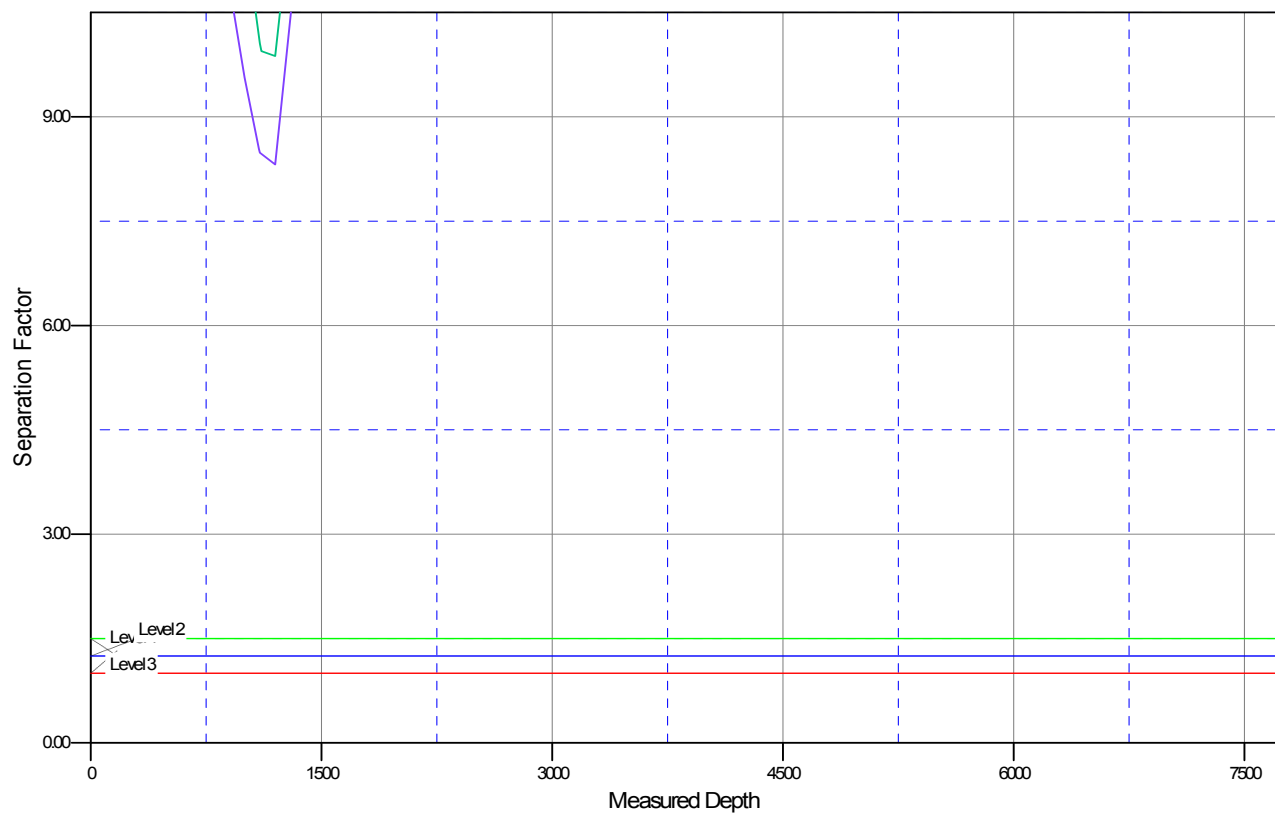


Company:	Ursa Operating Company, LLC	Local Co-ordinate Reference:	Well McLin C6
Project:	Rockies Region	TVD Reference:	McLin C6 @ 5741.4ft (Original Well Elev)
Reference Site:	McLin C	MD Reference:	McLin C6 @ 5741.4ft (Original Well Elev)
Site Error:	0.0ft	North Reference:	True
Reference Well:	McLin C6	Survey Calculation Method:	Minimum Curvature
Well Error:	0.0ft	Output errors are at	2.00 sigma
Reference Wellbore	Wellbore #1	Database:	EDM 2003.21 Single User Db
Reference Design:	Design #1	Offset TVD Reference:	Offset Datum

Reference Depths are relative to McLin C6 @ 5741.4ft (Original Well Elev)
 Offset Depths are relative to Offset Datum
 Central Meridian is 105° 30' 0.000 W °

Coordinates are relative to: McLin C6
 Coordinate System is US State Plane 1983, Colorado Central Zone
 Grid Convergence at Surface is: -1.33°

Separation Factor Plot



LEGEND

MCLIN C13, Wellbore #1, Actual V0	MCLIN C2, Wellbore #1, Actual V0	MCLIN C24, Wellbore #1, Actual V0
MCLIN C16, Wellbore #1, Actual V0	MCLIN C20, Wellbore #1, Actual V0	MCLIN C7, Wellbore #1, Actual V0
MCLIN C18, Wellbore #1, Actual V0	MCLIN C22, Wellbore #1, Actual V0	
MCLIN C19, Wellbore #1, Actual V0	MCLIN C23, Wellbore #1, Actual V0	