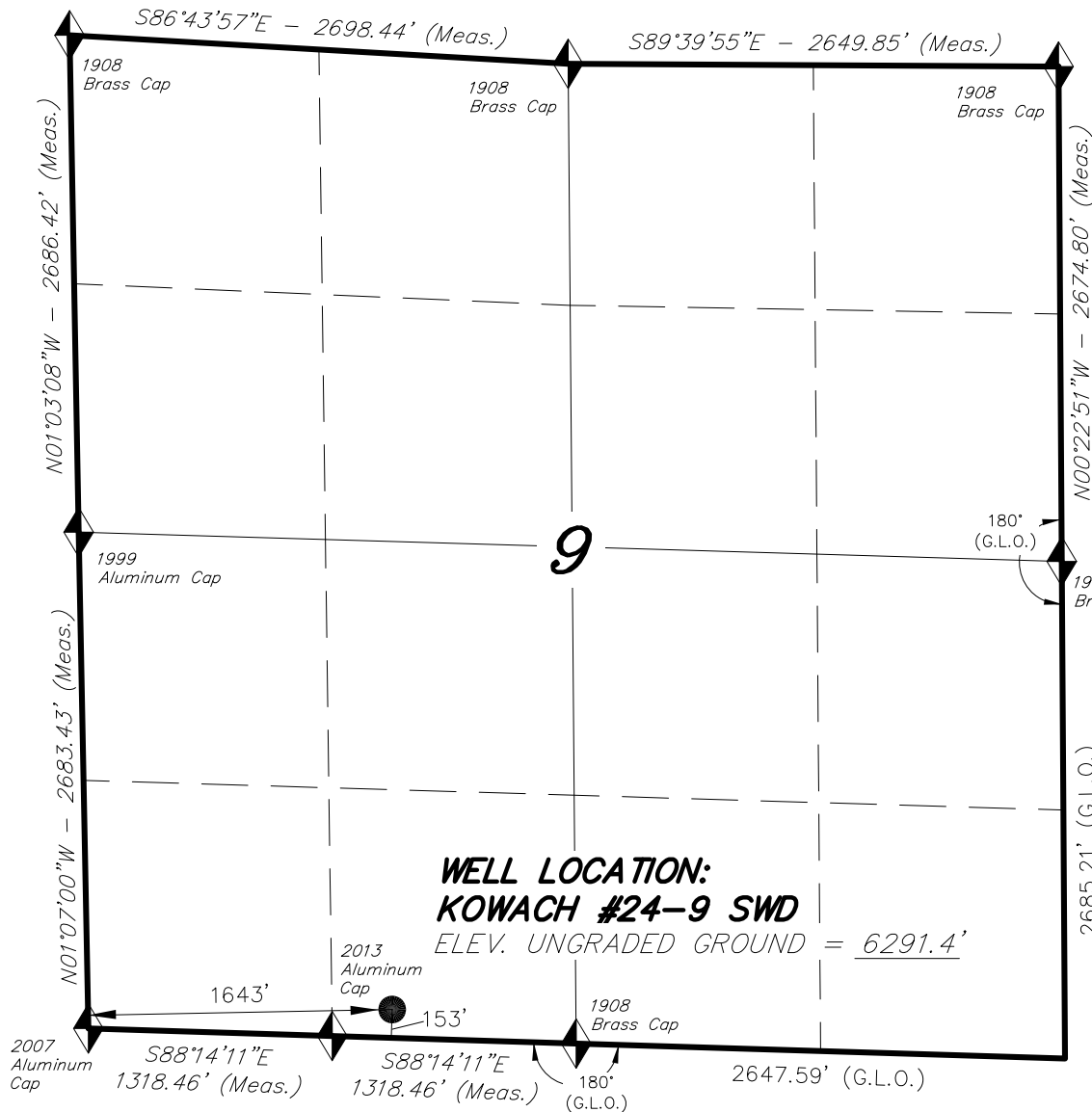
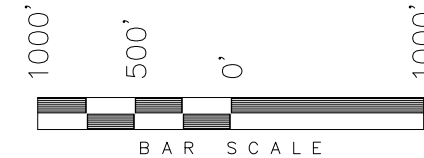


T6N, R90W, 6TH P.M.

PEAKVIEW OPERATING COMPANY, LLC



WELL LOCATION, KOWACH #24-9 SWD,
LOCATED AS SHOWN IN THE SE 1/4 SW
1/4 OF SECTION 9, T6N, R90W, 6TH P.M.
MOFFAT COUNTY, COLORADO.



NOTES:

1. Well footages are measured at right angles to the Section Lines.
2. Bearings are based on Global Positioning Satellite observations.
3. G.P.S. Operator: K.Stewart, (PDOP) = 1.5

IMPROVEMENT NOTE:

See addendum to legal plat (Sheet 2) for visible improvements within 500' of the proposed location.

THIS IS TO CERTIFY THAT THE ABOVE PLAT WAS PREPARED FROM FIELD NOTES OF SURVEYS MADE BY ME OR UNDER MY SUPERVISION. THE LOCATION HAS BEEN STAKED ON THE GROUND AS SHOWN ON THE PLAT, AND THAT THE SAME ARE TRUE AND CORRECT TO THE BEST OF MY KNOWLEDGE AND BELIEF.

06-24-13
30125

REGISTERED LAND SURVEYOR
REGISTRATION NO. 2500
STATE OF COLORADO

◆ = SECTION CORNERS LOCATED

BASIS OF ELEVATIONS IS MAGNOLIA TRIANGULATION STATION LOCATED IN THE NW 1/4 OF SECTION 9, T2S, R96W, 6th P.M. REPORTED FROM THE NATIONAL GEODETIC SURVEY AS BEING 7529 FEET (NAVD 88). WE MEASURED IT TO BE 7526.2 FEET.

NAD 83 (SURFACE LOCATION)	
LATITUDE	= 40°29'06.51" (40.485142°)
LONGITUDE	= 107°29'57.05" (107.499180°)
NAD 27 (SURFACE LOCATION)	
LATITUDE	= 40°29'06.61" (40.485170°)
LONGITUDE	= 107°29'54.82" (107.498561°)

TRI STATE LAND SURVEYING & CONSULTING

180 NORTH VERNAL AVE. - VERNAL, UTAH 84078
(435) 781-2501

DATE SURVEYED: 03-21-13	SURVEYED BY: K.G.S.	SHEET 1
DATE DRAWN: 03-28-13	DRAWN BY: M.W.	
REVISED: 06-24-13 M.W.	SCALE: 1" = 1000'	