

T5N, R91W, 6th P.M.

SWEP1 LP

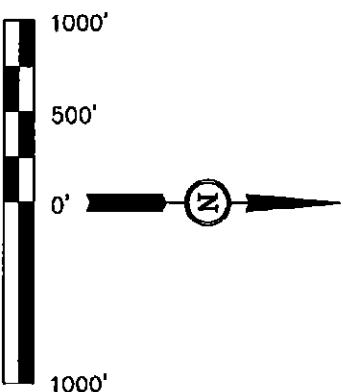
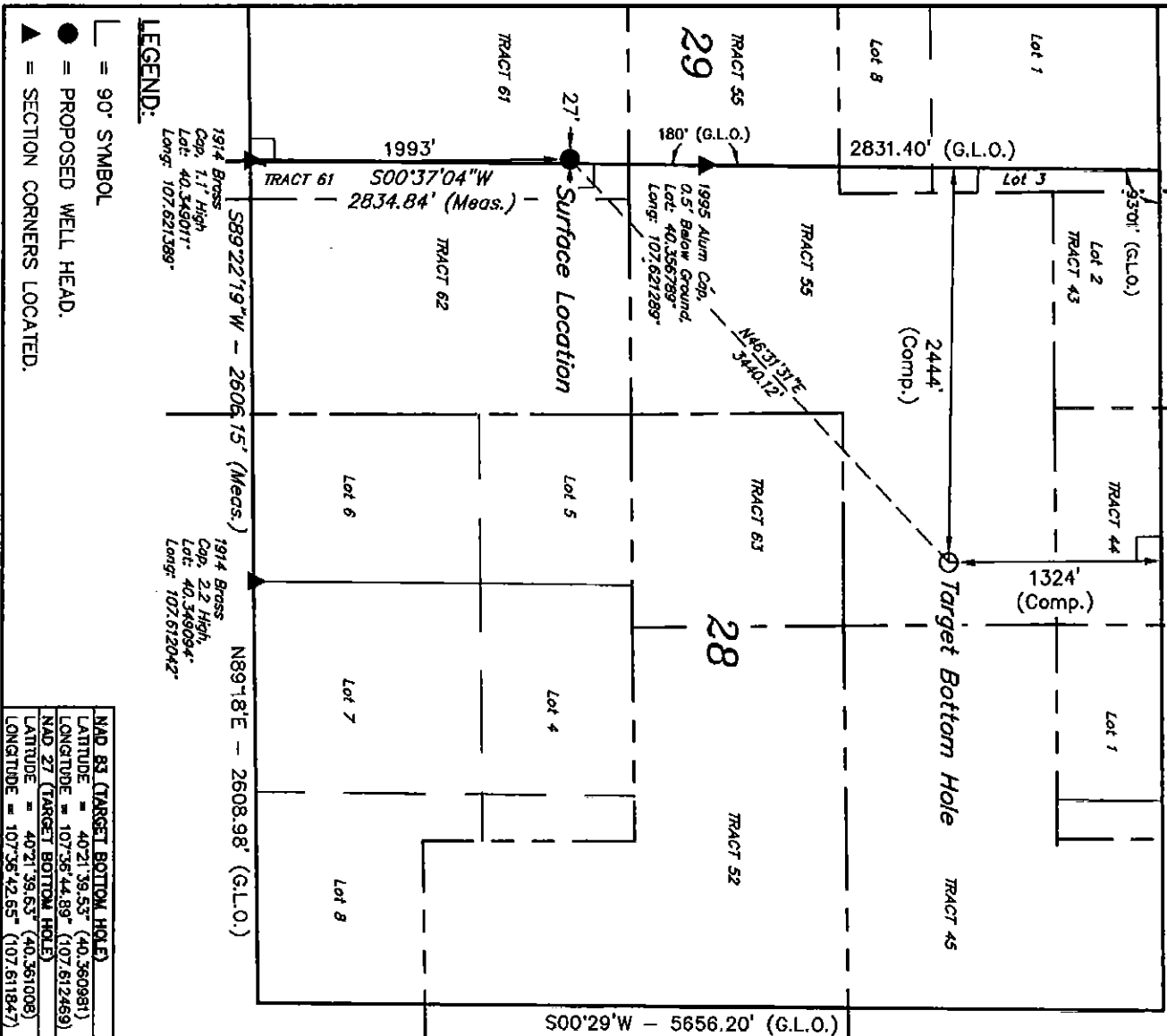
Well location, HAMILTON #2-29 (TARGET BOTTOM HOLE), located as shown in TRACT 55 of Section 28, T5N, R91W, 6th P.M., Moffat County, Colorado.

BASIS OF ELEVATION

SPOT ELEVATION AT THE NORTHEAST CORNER OF SECTION 31, T5N, R90W, 6th P.M. TAKEN FROM THE HAMILTON QUADRANGLE, COLORADO, MOFFAT COUNTY, 7.5 MINUTE QUAD (TOPOGRAPHIC MAP) PUBLISHED BY THE UNITED STATES DEPARTMENT OF THE INTERIOR, GEOLOGICAL SURVEY. SAID ELEVATION IS MARKED AS BEING 6664 FEET.

BASIS OF BEARINGS

BASIS OF BEARINGS IS A G.P.S. OBSERVATION.



CERTIFICATE

THIS IS TO CERTIFY THAT THE ABOVE PLATS, PREPARED FROM FIELD NOTES OF ACTUAL SURVEYS MADE BY REGOR UNDER MY SUPERVISION AND THAT THE SAME ARE TRUE AND CORRECT TO THE BEST OF MY KNOWLEDGE AND BELIEF.

REMOVED: 07-08-13 M.D.
REMOVED: 07-03-13 M.D.
REMOVED: 01-21-13 J.M.H.

REGISTERED AND SURVEYOR
REGISTRATION NO. 10000
STATE OF COLORADO
09-08-13

UTIAH ENGINEERING & LAND SURVEYING
85 SOUTH 200 EAST - VERNAL, UTAH 84078
(435) 789-1017

SCALE: 1" = 1000'
DATE SURVEYED: 04-19-12
DATE DRAWN: 05-02-12

PARTY	B.H. A.S. J.J.	REFERENCES	G.L.O. PLAT
WEATHER	WARM	FILE	SWEP1 LP

LEGEND:

- = 90° SYMBOL
- = PROPOSED WELL HEAD.
- ▲ = SECTION CORNERS LOCATED.

NAD 83 (TARGET BOTTOM HOLE)
LATITUDE = 40°21'38.53" (40.360981)
LONGITUDE = 107°36'44.89" (107.612489)
NAD 27 (TARGET BOTTOM HOLE)
LATITUDE = 40°21'38.63" (40.361008)
LONGITUDE = 107°36'42.65" (107.611847)