



Cementing Job Summary

The Road to Excellence Starts with Safety

Sold To #: 300721		Ship To #: 2976428		Quote #:		Sales Order #: 900161385	
Customer: WPX ENERGY ROCKY MOUNTAIN LLC-EBUS				Customer Rep: Brunk, Andrew			
Well Name: RGU			Well #: 421-24-198			API/UWI #: 05-103-11805	
Field: SULPHUR CREEK		City (SAP): MEEKER		County/Parish: Rio Blanco			State: Colorado
Lat: N 39.953 deg. OR N 39 deg. 57 min. 9.914 secs.				Long: W 108.34 deg. OR W -109 deg. 39 min. 36.839 secs.			
Contractor: CYCLONE 29			Rig/Platform Name/Num: CYCLONE 29				
Job Purpose: Cement Multiple Stages							
Well Type: Development Well			Job Type: Cement Multiple Stages				
Sales Person: MAYO, MARK			Srvc Supervisor: KUKUS, CHRISTOPHER			MBU ID Emp #: 413952	

Job Personnel

HES Emp Name	Exp Hrs	Emp #	HES Emp Name	Exp Hrs	Emp #	HES Emp Name	Exp Hrs	Emp #
GOWEN, WESLEY M	0.0	496205	KUKUS, CHRISTOPHER A	0.0	413952	RAMSEY, STANTON Michael	0.0	477609
WADE, LOGAN D	0.0	488896						

Equipment

HES Unit #	Distance-1 way	HES Unit #	Distance-1 way	HES Unit #	Distance-1 way	HES Unit #	Distance-1 way
10296152C	30 mile	10722398	30 mile	10744549	30 mile	10995027	30 mile
11139330	30 mile	11583931	30 mile	11808849	30 mile	4902	30 mile
4905	30 mile						

Job Hours

Date	On Location Hours	Operating Hours

TOTAL	Total is the sum of each column separately			
-------	--	--	--	--

Job

Job Times

Formation Name							Date	Time	Time Zone		
Formation Depth (MD)		Top		Bottom		Called Out	27 - Jan - 2013	11:00	MST		
Form Type			BHST			On Location	27 - Jan - 2013	16:30	MST		
Job depth MD		3942. ft		Job Depth TVD		3942. ft		Job Started	27 - Jan - 2013	21:09	MST
Water Depth				Wk Ht Above Floor		5. ft		Job Completed	28 - Jan - 2013	10:53	MST
Perforation Depth (MD)		From		To		Departed Loc	28 - Jan - 2013	13:00	MST		

Well Data

Description	New / Used	Max pressure psig	Size in	ID in	Weight lbm/ft	Tool Data		Grade	Top MD ft	Bottom MD ft	Top TVD ft	Bottom TVD ft
						Length ft	Weight lbm					
OPEN HOLE				13.5					1700.	3942.		
OPEN HOLE				14.75					.	1700.		
SURFACE CASING	New		9.625	8.921	36.			I-80	.	3936.4		

Tools and Accessories

Type	Size	Qty	Make	Depth	Type	Size	Qty	Make	Depth	Type	Size	Qty	Make
Guide Shoe					Packer					Top Plug			
Float Shoe					Bridge Plug					Bottom Plug			
Float Collar					Retainer					SSR plug set			
Insert Float										Plug Container			
Stage Tool										Centralizers			

Miscellaneous Materials

Gelling Agt	Conc	Surfactant	Conc	Acid Type	Qty	Conc	%
Treatment Fld	Conc	Inhibitor	Conc	Sand Type	Size	Qty	

Fluid Data

Stage/Plug #: 1	
-----------------	--

Cementing Job Summary

Fluid #	Stage Type	Fluid Name	Qty	Qty uom	Mixing Density lbm/gal	Yield ft ³ /sk	Mix Fluid Gal/sk	Rate bbl/min	Total Mix Fluid Gal/sk
1	Fresh Water Spacer		40.00	bbl	8.33	.0	.0	.0	
2	1st Stage Lead Cement	VERSACEM (TM) SYSTEM (452010)	✓ 670.0	sacks	12.8	1.77	9.34		9.34
	9.34 Gal	FRESH WATER							
3	1st Stage Tail Cement	VERSACEM (TM) SYSTEM (452010)	✓ 165.0	sacks	12.8	1.96	10.95		10.95
	10.95 Gal	FRESH WATER							
4	Displacement		302.00	bbl	8.33	.0	.0	.0	
5	Fresh Water Spacer		45.00	bbl	8.33	.0	.0	.0	
6	2nd Stage Tail	VERSACEM (TM) SYSTEM (452010)	✓ 850.0	sacks	12.8	1.96	10.95		10.95
	10.95 Gal	FRESH WATER							
7	Displacement		136.00	bbl	8.33	.0	.0	.0	
8	HalCem Topout	HALCEM (TM) SYSTEM (452986)	✓ 525.0	sacks	15.8	1.15	4.98		4.98
	4.98 Gal	FRESH WATER							
Calculated Values		Pressures		Volumes					
Displacement		Shut In: Instant		Lost Returns		Cement Slurry		Pad	
Top Of Cement		5 Min		Cement Returns		Actual Displacement		Treatment	
Frac Gradient		15 Min		Spacers		Load and Breakdown		Total Job	
Rates									
Circulating		Mixing		Displacement		Avg. Job			
Cement Left In Pipe	Amount	0 ft	Reason	Shoe Joint					
Frac Ring # 1 @	ID	Frac ring # 2 @	ID	Frac Ring # 3 @	ID	Frac Ring # 4 @	ID		
The Information Stated Herein Is Correct				Customer Representative Signature					

The Road to Excellence Starts with Safety

Sold To #: 300721	Ship To #: 2976428	Quote #:	Sales Order #: 900161385
Customer: WPX ENERGY ROCKY MOUNTAIN LLC-EBUS	Customer Rep: Brunk, Andrew		
Well Name: RGU	Well #: 421-24-198	API/UWI #: 05-103-11805	
Field: SULPHUR CREEK	City (SAP): MEEKER	County/Parish: Rio Blanco	State: Colorado
Legal Description:			
Lat: N 39.953 deg. OR N 39 deg. 57 min. 9.914 secs.		Long: W 108.34 deg. OR W -109 deg. 39 min. 36.839 secs.	
Contractor: CYCLONE 29	Rig/Platform Name/Num: CYCLONE 29		
Job Purpose: Cement Multiple Stages			Ticket Amount:
Well Type: Development Well	Job Type: Cement Multiple Stages		
Sales Person: MAYO, MARK	Srv Supervisor: KUKUS, CHRISTOPHER	MBU ID Emp #: 413952	

Activity Description	Date/Time	Cht #	Rate bbl/min	Volume bbl		Pressure psig		Comments
				Stage	Total	Tubing	Casing	
Call Out	01/27/2013 11:00							ELITE # 9
Depart Yard Safety Meeting	01/27/2013 13:30							ALL HES EMPLOYEES
Arrive At Loc	01/27/2013 16:30							RIG PULLING DRILL PIPE HES CREW ARRIVED 1.5 HOURS EARLY AND SPOTTED TRUCKS AND RIGGED UP
Assessment Of Location Safety Meeting	01/27/2013 16:40							ALL HES EMPLOYEES
Pre-Rig Up Safety Meeting	01/27/2013 16:50							ALL HES EMPLOYEES
Rig-Up Equipment	01/27/2013 17:00							1 F-550 PICKUP 1 HT-400 PUMP TRUCK 1 660 BULK TRUCK 2 SILOS H2O UPRIGHT & DAY TANK
Pre-Job Safety Meeting	01/27/2013 20:45							ALL HES EMPLOYEES AND RIG CREW
Start Job	01/27/2013 21:09							TD: 3942 TP: 3936.39 SJ: 27.1 CSG: 9 5/8 36# OH: 14 3/4 TO 1700 13 1/2 TO TD MUD WT 9.9 STAGE TOOL @ 1759.78
Test Lines	01/27/2013 21:11					4783.0		PRESSURE TEST OK
Pump Spacer	01/27/2013 21:17		4	40	40		254.0	FRESH WATER SPACER
Activity Description	Date/Time	Cht #	Rate bbl/min	Volume bbl		Pressure psig		Comments
				Stage	Total	Tubing	Casing	

Sold To #: 300721

Ship To #: 2976428

Quote #:

Sales Order #: 900161385

SUMMIT Version: 7.3.0073

Saturday, February 02, 2013 03:39:00

Cementing Job Log

Pump Lead Cement	01/27/2013 21:30		7	211.2	211.2		565.0	670 SKS 12.8 PPG 1.77 YEILD 9.34 GAL / SK LEAD CEMENT WEIGHT VERIFIED VIA MUD SCALES THROUGH OUT LEAD CEMENT ADDED 2.5 BOXES OF TUFF FIBER IN 1ST 100 BBL OF LEAD CEMENT
Other	01/27/2013 21:57							160 BBLs GONE HAD TO SHUTDOWN DUE TO LOSS OF DENSITY FIXED DENSITY AND RESUMED PUMPING HES WAS SHUTDOWN FOR 2 MINS TO FIX PROBLEM
Pump Tail Cement	01/27/2013 22:04		6	57.6	57.6		325.0	165 SKS 12.8 PPG 1.96 YEILD 10.95 GAL / SK TAIL CEMENT WEIGHT VERIFIED VIA MUD SCALES THROUGH OUT TAIL CEMENT
Shutdown	01/27/2013 22:14							
Drop Plug	01/27/2013 22:15							PLUG AWAY NO PROBLEMS
Pump Displacement	01/27/2013 22:18		8	302.2	302.2		350.0	FRESH WATER DISPLACEMENT
Slow Rate	01/27/2013 22:34		4	126	126		90.0	SLOW RATE TO PASS DART THROUGH STAGE TOOL
Other	01/27/2013 22:38		8	146	146		377.0	PICK RATE BACK UP
Slow Rate	01/27/2013 22:57		2	292.2	292.2		898.0	SLOW RATE TO BUMP PLUG
Bump Plug	01/27/2013 22:59		2	302.2	302.2		590.0	BUMP PLUG @ 590 AND TOOK PRESSURE UP TO 1331 PSI
Check Floats	01/27/2013 23:01							FLOATS HELD 1 BBL BACK TO DISPLACEMENT TANKS WELL HAD GOOD RETURNS THROUGH OUT 1ST STAGE
Drop Opening Device For Multiple Stage Cementer	01/27/2013 23:02							DROP OPENING DEVICE WAIT 10 MINS BEFORE OPENING STAGE TOOL
Activity Description	Date/Time	Cht	Rate bbl/ min	Volume bbl		Pressure psig		Comments

Sold To #: 300721

Ship To #: 2976428

Quote #:

Sales Order #: 900161385

SUMMIT Version: 7.3.0073

Saturday, February 02, 2013 03:39:00

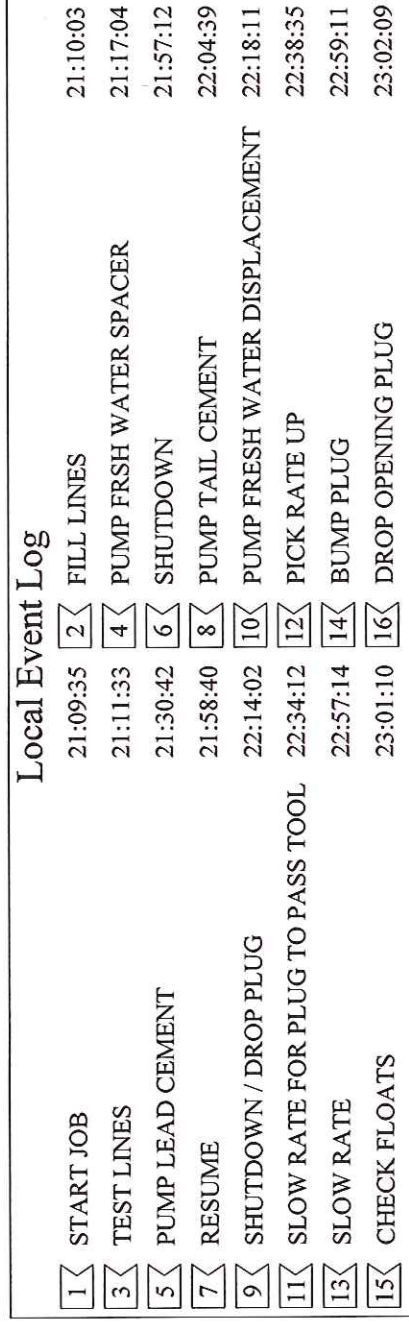
		#		Stage	Total	Tubing	Casing	
Open Multiple Stage Cementer	01/27/2013 23:43							HAD PROBLEMS OPENING TOOL 1ST PRESSURE UP 1450 TOOL NOT OPEN 2ND PRESSURE UP 1430 TOOL NOT OPEN 3RD PRESSURE UP 1518 TOOL NOT OPEN 4TH PRESSURE UP 2020 TOOL NOT OPEN 5TH PRESSURE UP TOOL OPEN @ 800 PSI
Start Job	01/27/2013 23:43							START 2 ND STAGE
Pump Spacer	01/27/2013 23:43		4	45	45		254.0	FRESH WATER SPACER
Pump Tail Cement	01/27/2013 23:54		6	296.7	296.7		370.0	(850)SKS 12.8 PPG 1.96 YEILD 10.95 GAL / SK TAIL CEMENT WEIGHT VERIFIED VIA MUD SCALES THROUGH OUT TAIL CEMENT ADDED 2.5 BOXES OF TUFF FIBER LAST 100 BBLs OF TAIL CEMENT
Slow Rate	01/28/2013 00:32		3	238	238		110.0	SLOW RATE 238 BBLs INTO TAIL CEMENT DUE TO LOST RETURNS PER CO- REP REQUEST
Shutdown	01/28/2013 00:52							
Drop Plug	01/28/2013 00:53							PLUG AWAY NO PROBLEMS
Pump Displacement	01/28/2013 00:56		4	136.1	136.1		104.0	FRESH WATER DISPLACEMENT
Bump Plug	01/28/2013 01:28		4	136.1	136.1		3511.0	BUMP PLUG @ 351 TOOK TO 1580 PSI
Close Multiple Stage Cementer	01/28/2013 01:30							STAGE TOOL CLOSED @ 1580 PSI
Check Floats	01/28/2013 01:31							FLOATS HELD 2 BBL BACK TO DISPLACEMENT TANKS
End Job	01/28/2013 01:33							WELL HAD SOME RETURNS TO NO RETURNS GOT NO CEMENT TO SURFACE HES CREW WAITED ON LOCATION FOR TOP OUT CEMENT

Cementing Job Log

Activity Description	Date/Time	Cht #	Rate bbl/min	Volume bbl		Pressure psig		Comments
				Stage	Total	Tubing	Casing	
Start Job	01/28/2013 08:31							TOP OUT CEMENT ARRIVED ON LOCATION @ 08:00
Pump Cement	01/28/2013 09:24		3	86	86	822.0		TOP OUT WELL RGU 421-24-198 420SKS 15.8 PPG 1.15 YEILD 5.01 GAL/SK TOP OUT CEMENT WEIGHT VERIFIED VIA MUD SCALES THROUGH OUT TOP OUT
Shutdown	01/28/2013 09:59							SHUTDOWN 1 BBL CEMENT TO SURFACE SWAP LINES OVER TO WELL RGU 22-24-198 FOR TOP OUT
Pump Cement	01/28/2013 10:15		1.5	11.4	11.4	3.0		56 SKS 15.8 1.15 YEILD 5.01 GAL/SK TOP OUT WEIGHT VERIFIED VIA MUD SCALES THROUGH TOP OUT CEMENT
Shutdown	01/28/2013 10:23							SHUTDOWN 1 BBL CEMENT TO SURFACE SWAP LINES OVER TO WELL RGU 331-24-198 FOR TOP OUT
Pump Cement	01/28/2013 10:28		1.5	16.4	16.4	.0		(81) SKS 15.8 1.15 YEILD 5.01 GAL/SK TOP OUT WEIGHT VERIFIED VIA MUD SCALES THROUGH TOP OUT CEMENT
Shutdown	01/28/2013 10:43							SHUTDOWN 1BBL CEMENT TO SURFACE
End Job	01/28/2013 10:53							ALL WELLS TOP OUT TO SURFACE RIG USED 20 LB OF SUGAR
Other	01/28/2013 11:00							TICKET CHANGES: ADD 525 SKS OF G CEMENT, ADD 41.1 TONS ADD 875 CU FT, 2 DOTS, 9 ADD HOURS, 2 TURCKS FULE CHARGE CHANGED SUGAR TO 20 LB

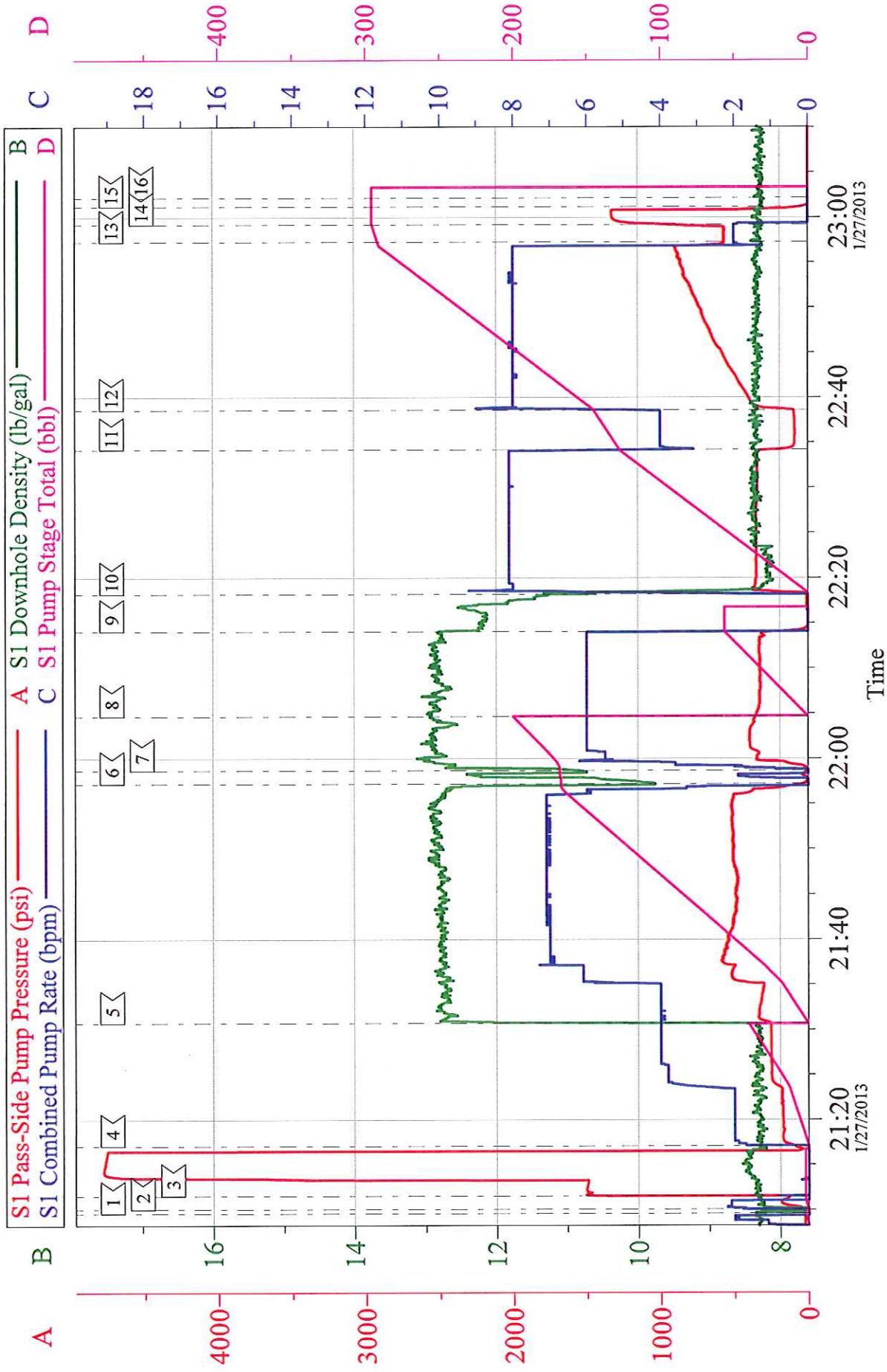
Activity Description	Date/Time	Cht #	Rate bbl/ min	Volume bbl		Pressure psig		Comments
				Stage	Total	Tubing	Casing	
Pre-Rig Down Safety Meeting	01/28/2013 11:20							ALL HES EMPLOYEES
Rig-Down Equipment	01/28/2013 11:30							
Pre-Convoy Safety Meeting	01/28/2013 12:50							ALL HES EMPLOYEES
Crew Leave Location	01/28/2013 13:00							THANKS FOR USING HALLIBURTON CEMENT CHRIS KUKUS AND CREW

9 5/8 TWO STAGE



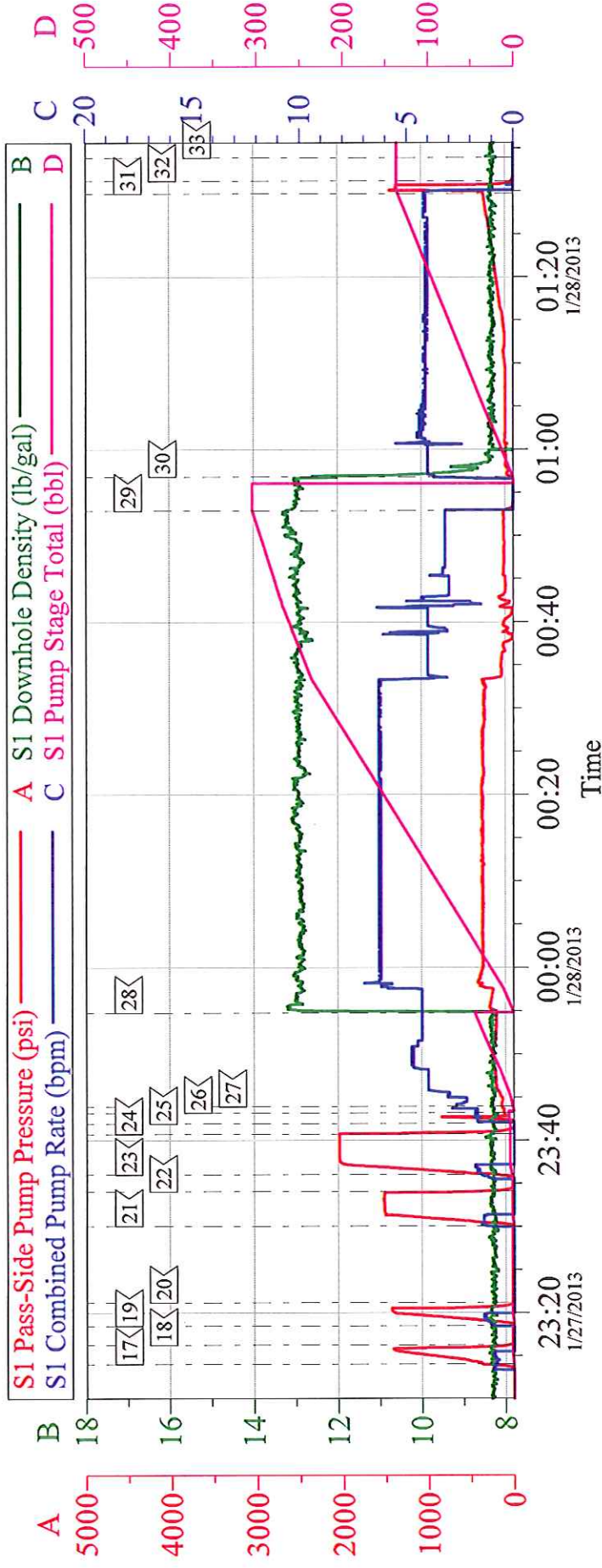
Customer: WPX	Job Date: 27-Jan-2013	Sales Order #: 900161385
Well Description: RGU 421-24-198	Job Type: TWO STAGE	ADC Used: YES
Company Rep: ANDREW BRUNK	Cement Supervisor: CHRIS KUKUS	Elite # 9: WESLEY GOWEN

WPX - RGU 421-24-198 9 5/8 TWO STAGE



Customer: WPX	Job Date: 27-Jan-2013	Sales Order #: 900161385
Well Description: RGU 421-24-198	Job Type: TWO STAGE	ADC Used: YES
Company Rep: ANDREW BRUNK	Cement Supervisor: CHRIS KUKUS	Elite # 9: WESLEY GOWEN

WPX - RGU 421-24-198 9 5/8 TWO STAGE



Local Event Log

<u>17</u>	PRESSURE UP ON TOOL	1/27/2013 23:14:02	<u>18</u>	RELEASE PRESSURE	1/27/2013 23:16:15
<u>19</u>	PRESSURE UP ON TOOL	1/27/2013 23:18:28	<u>20</u>	RELEASE PRESSURE	1/27/2013 23:21:12
<u>21</u>	PRESSURE UP ON TOOL	1/27/2013 23:30:05	<u>22</u>	RELEASE PRESSURE	1/27/2013 23:34:03
<u>23</u>	PRESSURE UP ON TOOL	1/27/2013 23:36:00	<u>24</u>	RELEASE PRESSURE	1/27/2013 23:40:43
<u>25</u>	PRESSURE UP ON TOOL	1/27/2013 23:41:56	<u>26</u>	TOOL OPEN	1/27/2013 23:43:10
<u>27</u>	PUMP FRESH WATER SPACER	1/27/2013 23:43:55	<u>28</u>	PUMP TAIL CEMENT	1/27/2013 23:54:47
<u>29</u>	SHUTDOWN / DROP PLUG	1/28/2013 00:52:52	<u>30</u>	PUMP FRESH WATER DISPLACEMENT	1/28/2013 00:56:48
<u>31</u>	BUMP PLUG / CLOSE TOOL	1/28/2013 01:29:41	<u>32</u>	CHECK FLOATS	1/28/2013 01:31:10
<u>33</u>	END JOB	1/28/2013 01:33:51			

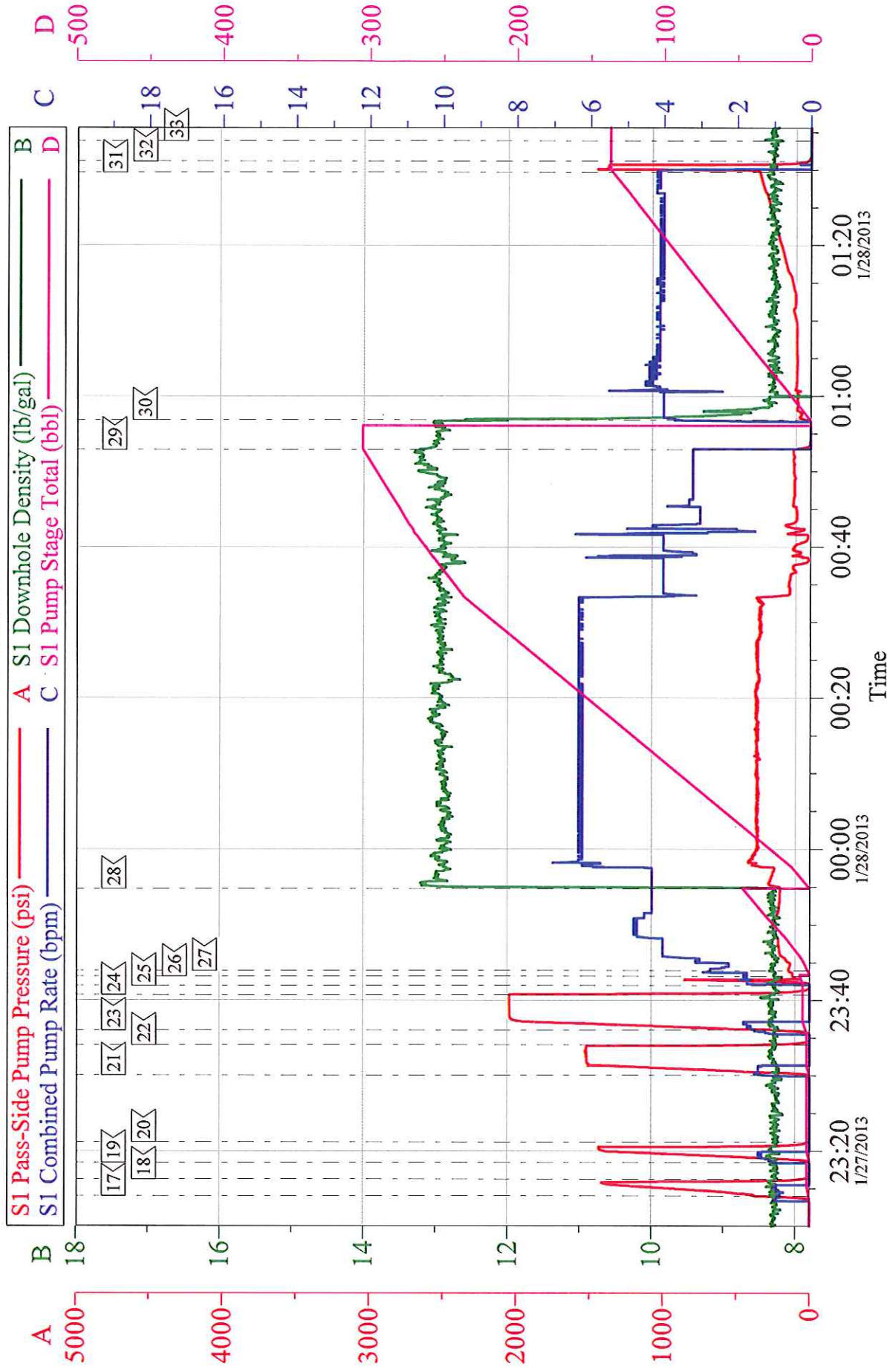
Customer: WPX
Well Description: RGU 421-24-198
Company Rep: ANDREW BRUNK

Job Date: 27-Jan-2013
Job Type: TWO STAGE
Cement Supervisor: CHRIS KUKUS

Sales Order #: 900161385
ADC Used: YES
Elite # 9: WESLEY GOWEN

OptiCem v6.4.10
28-Jan-13 01:51

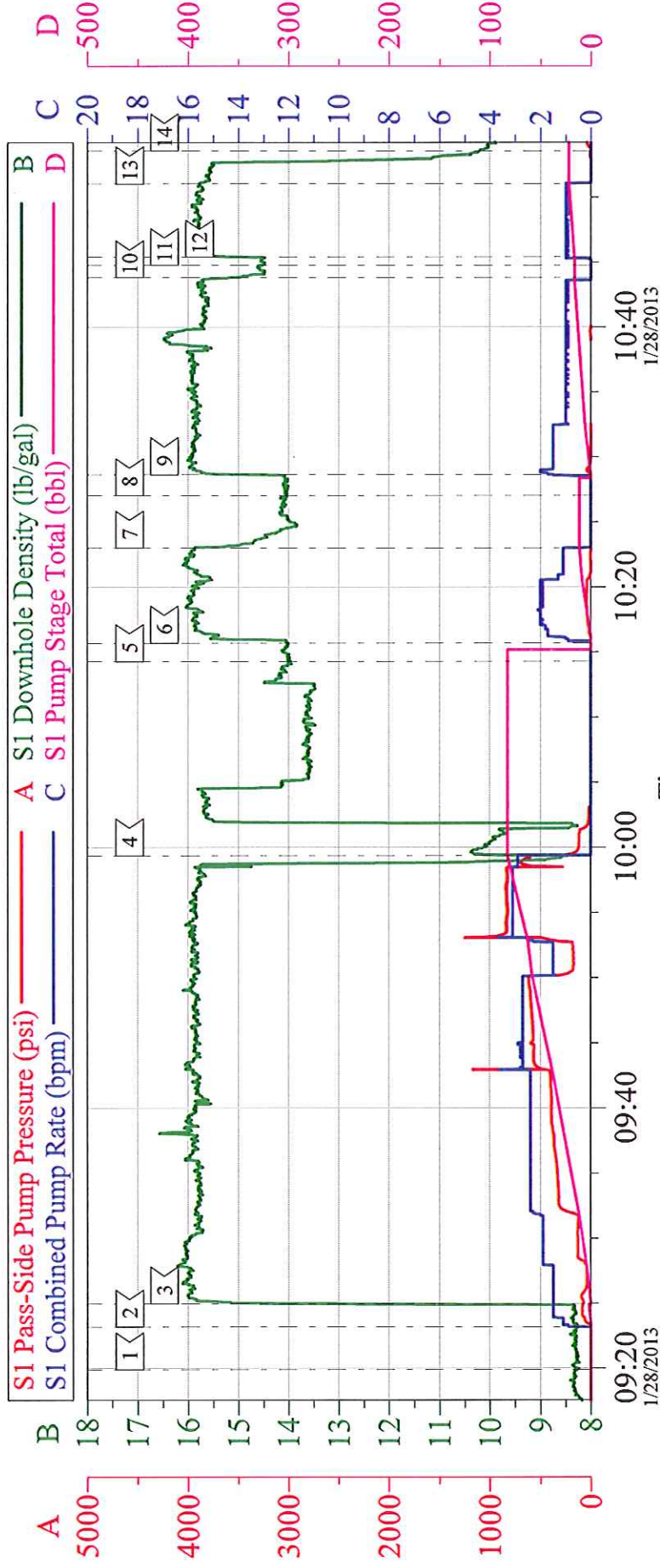
WPX - RGU 421-24-198 9 5/8 TWO STAGE



Customer: WPX	Job Date: 27-Jan-2013	Sales Order #: 900161385
Well Description: RGU 421-24-198	Job Type: TWO STAGE	ADC Used: YES
Company Rep: ANDREW BRUNK	Cement Supervisor: CHRIS KUKUS	Elite # 9: WESLEY GOWEN

WPX - RGU 421-24-198

TOP OUT



Local Event Log

1	START JOB	09:19:53	2	FRESH WATER AHEAD	09:23:10
3	PUMP CEMENT	09:24:56	4	SHUTDOWN / SWAP WELLS	09:59:22
5	TOP OUT WELL RGU 22-24-198	10:14:16	6	PUMP CEMENT	10:15:41
7	SHUTDOWN / SWAP WELL	10:23:00	8	TOP OUT WELL RGU 331-24-198	10:27:02
9	PUMP CEMENT	10:28:38	10	SHUTDOWN / SWAP WELL	10:43:49
11	TOP OUT WELL RGU 421 - 24- 198	10:44:46	12	PUMP CEMENT	10:45:25
13	SHUTDOWN	10:51:03	14	END JOB	10:53:34

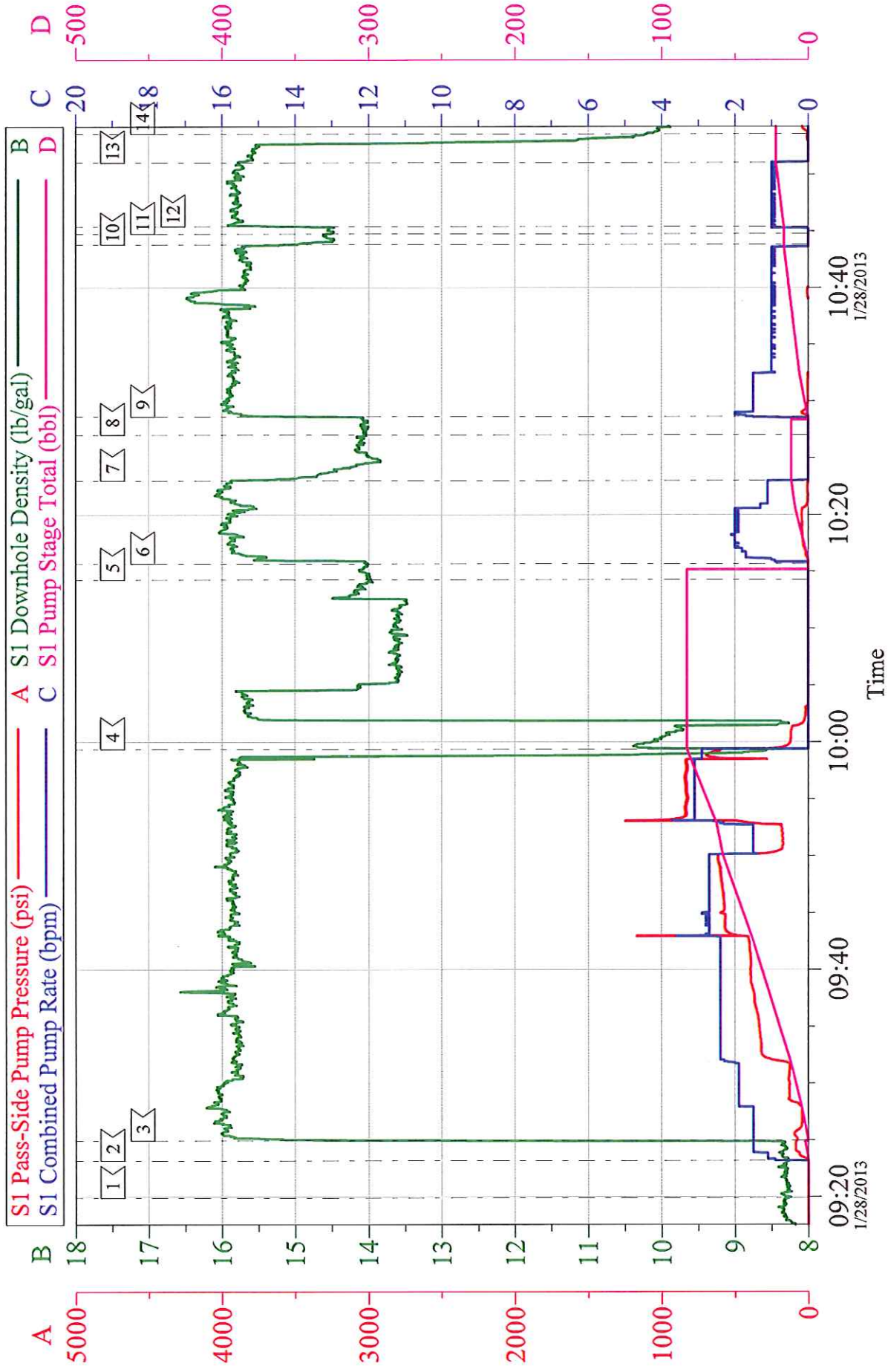
Customer: WPX
Well Description: RGU 421-24-198
Company Rep: ANDREW BRUNK

Job Date: 28-Jan-2013
Job Type: TOP OUT
Cement Supervisor: CHRIS KUKUS

Sales Order #: 900161385
ADC Used: YES
Elite # 9: WESLEY GOWEN

WPX - RGU 421-24-198

TOP OUT



Customer: WPX	Job Date: 28-Jan-2013	Sales Order #: 900161385
Well Description: RGU 421-24-198	Job Type: TOP OUT	ADC Used: YES
Company Rep: ANDREW BRUNK	Cement Supervisor: CHRIS KUKUS	Elite # 9: WESLEY GOWEN