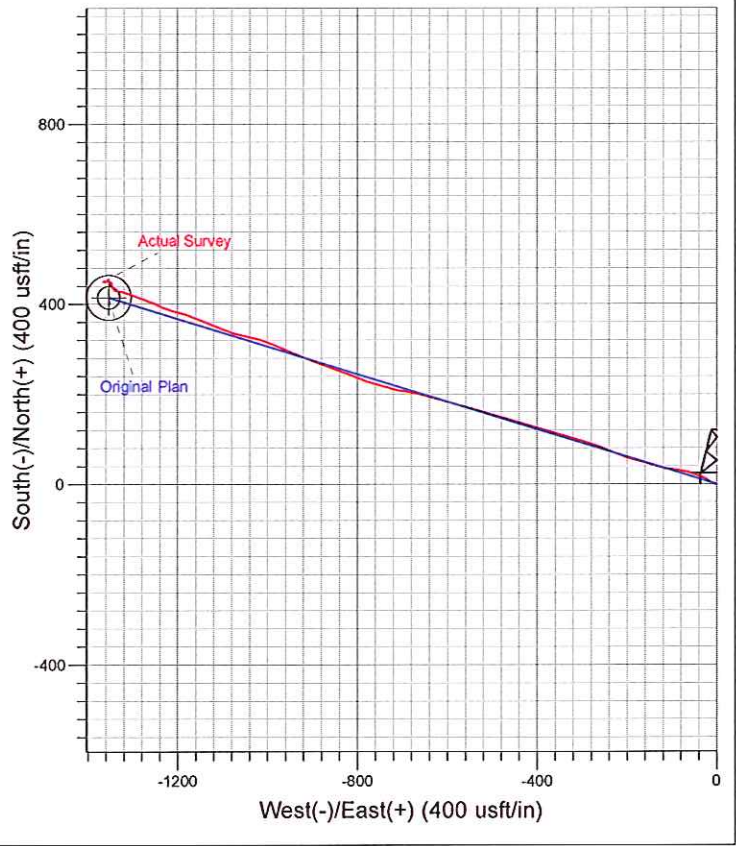
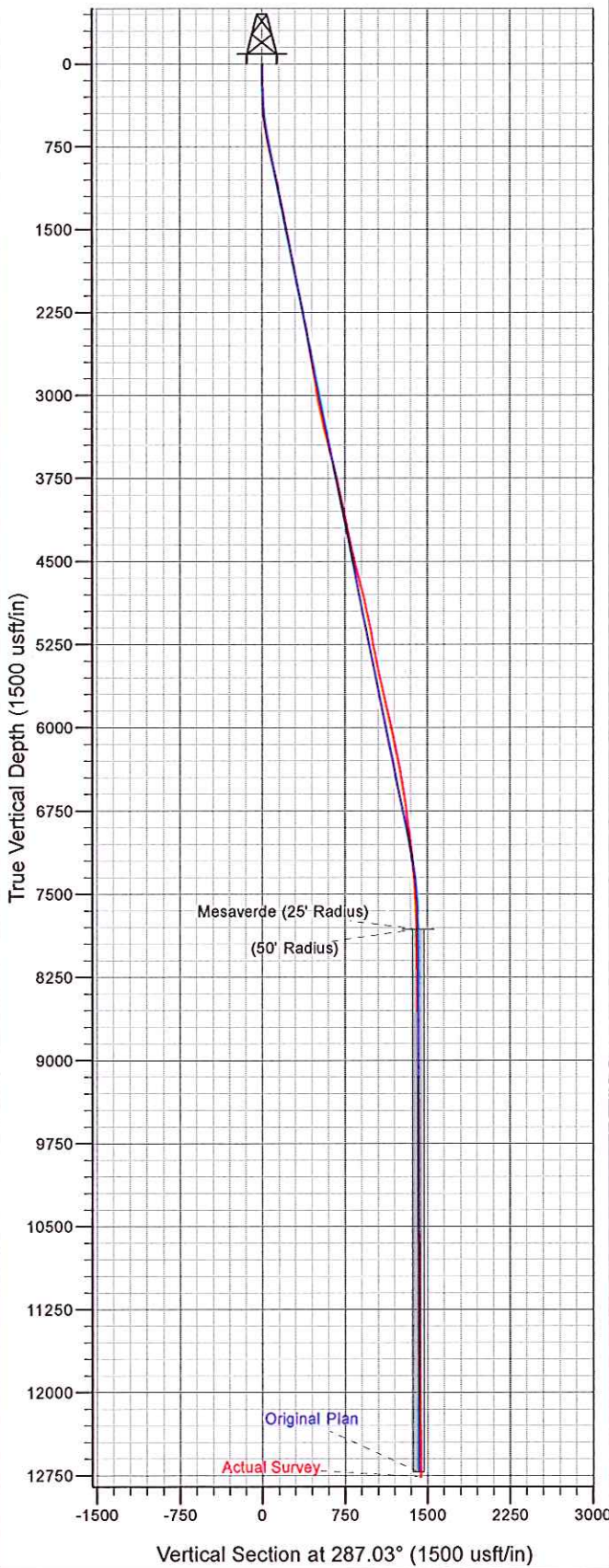




Well Name: RGU 421-24-198
 Surface Location: RGU 31-24-198 Pad
 North American Datum 1983 , US State Plane 1983. Colorado Central Zone
 Ground Elevation: 6546.00
 +N/-S +E/-W Northing Easting Latitude Longitude Slot
 0.00 0.00 1784370.70 2203947.00 39.95275 -108.33977 A2
 KELLY BUSHING @ 6567.00usft (Cyclone 29 (21' RKB))



	Azimuths to True North
	Magnetic North: 10.36°
Magnetic Field	
Strength: 52284.6snT	
Dip Angle: 66.01°	
Date: 1/28/2013	
Model: IGRF2010	